

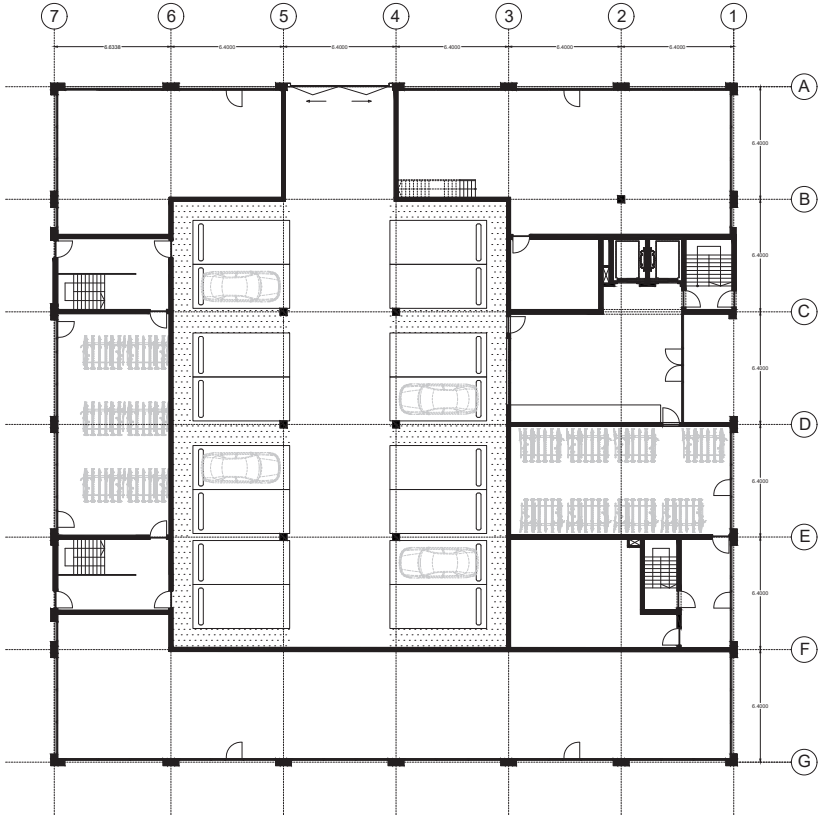
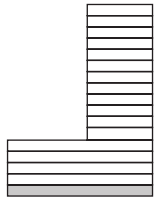
**Young professionals in the city**  
*Set of drawings*



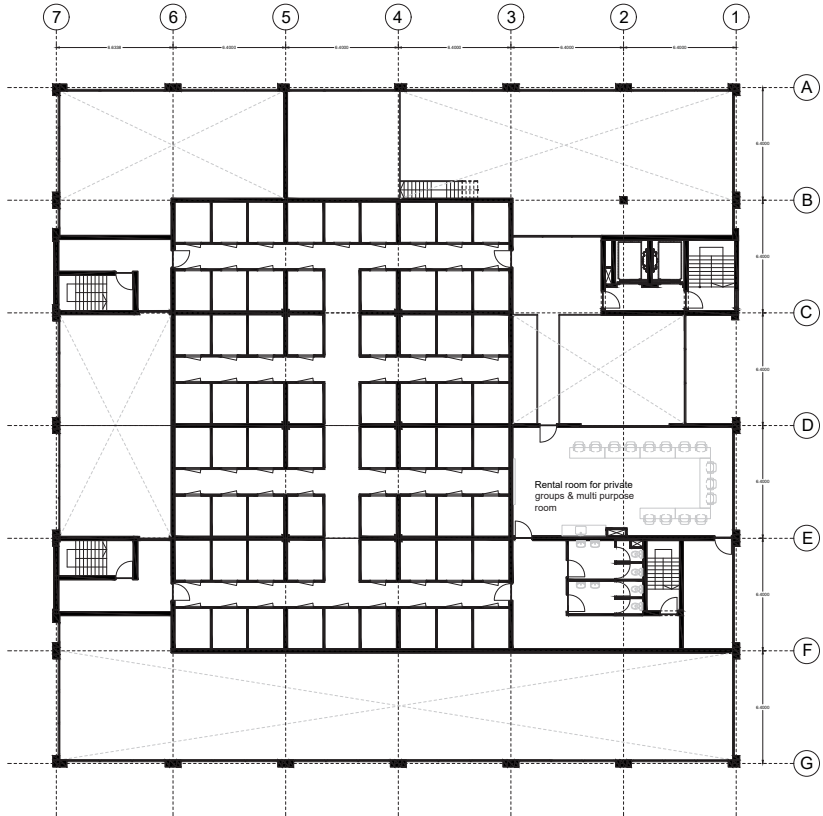
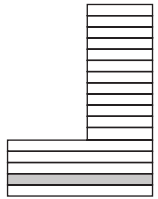
Moaaz Al Assadi

# Set of drawings

# Ground floor

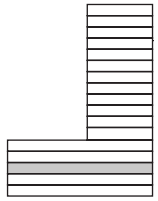


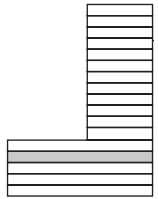
First floor



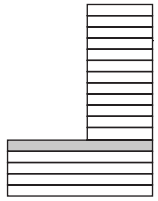


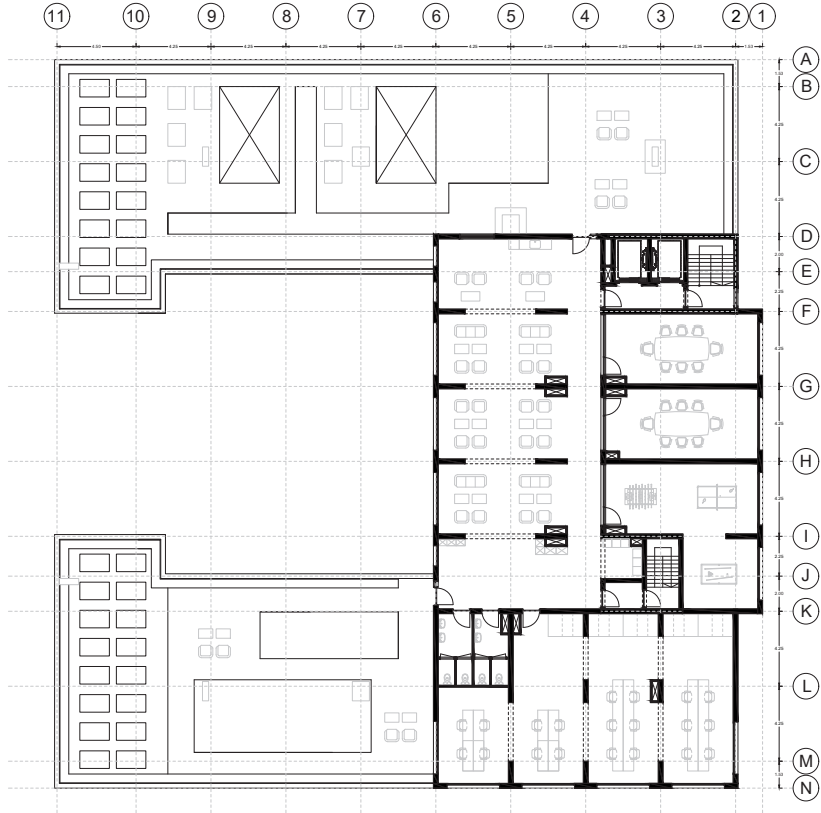
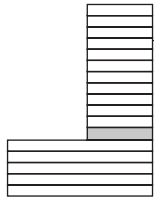
Second floor



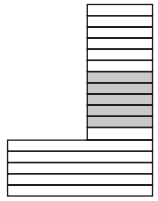


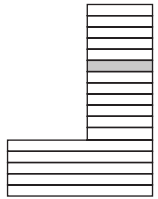
# Fourth floor



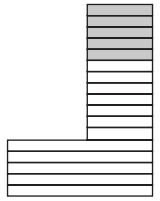


# Eleventh floor

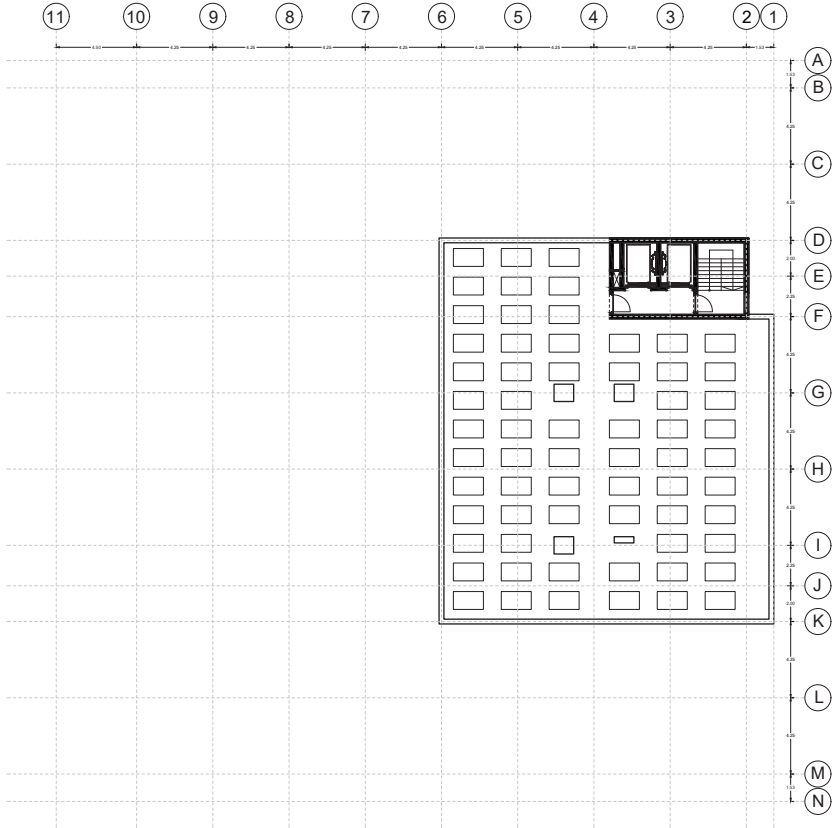
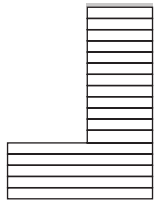


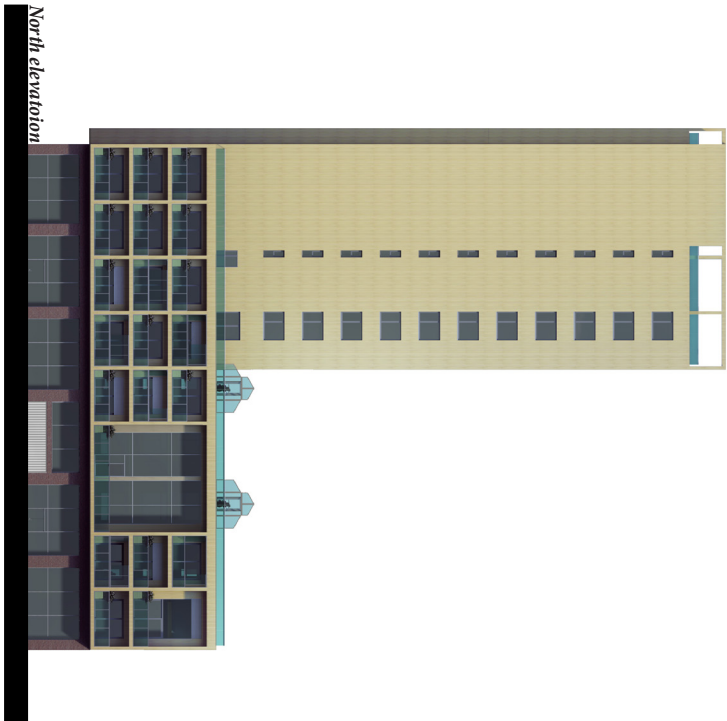
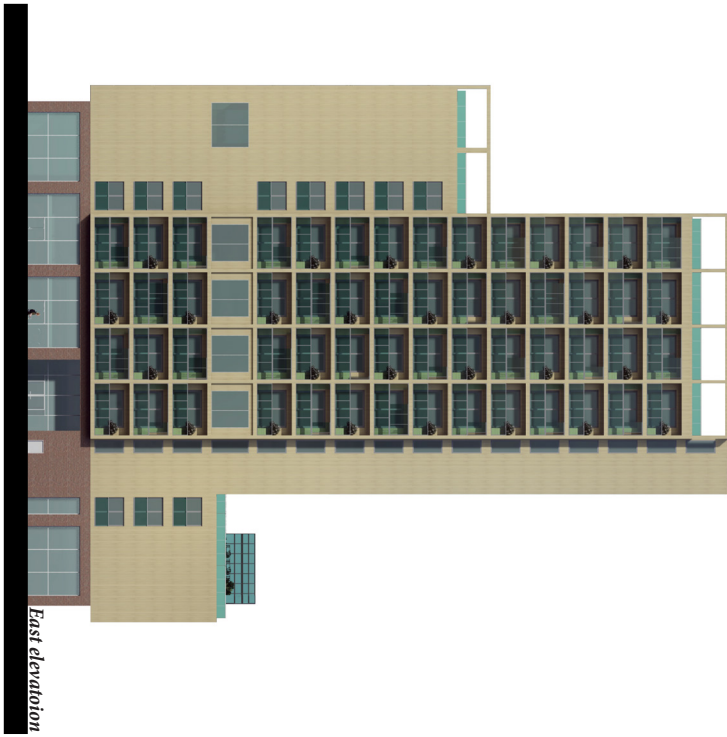


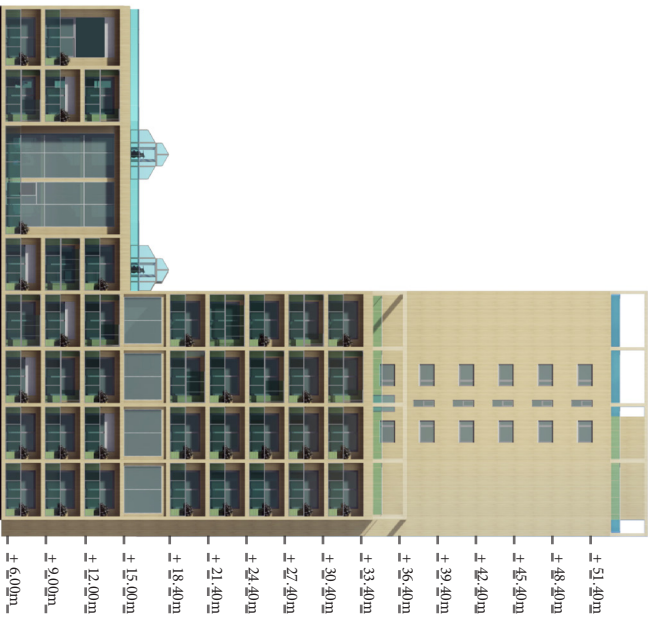
# Twelfth to sixteenth floor



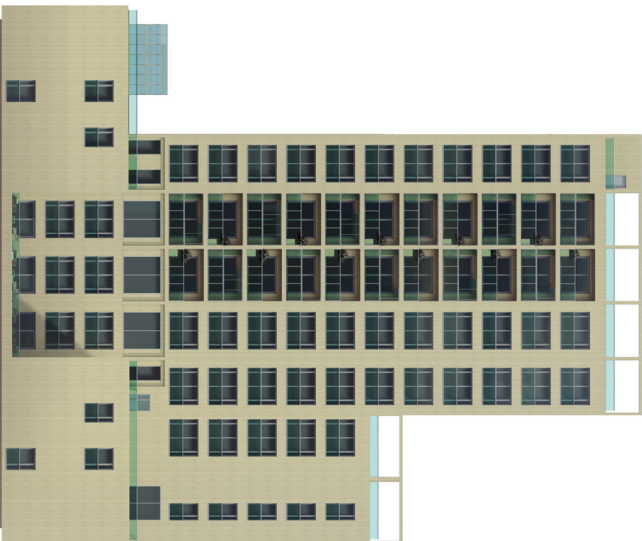








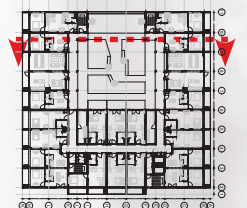
South elevation

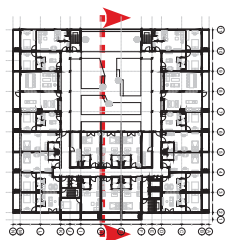
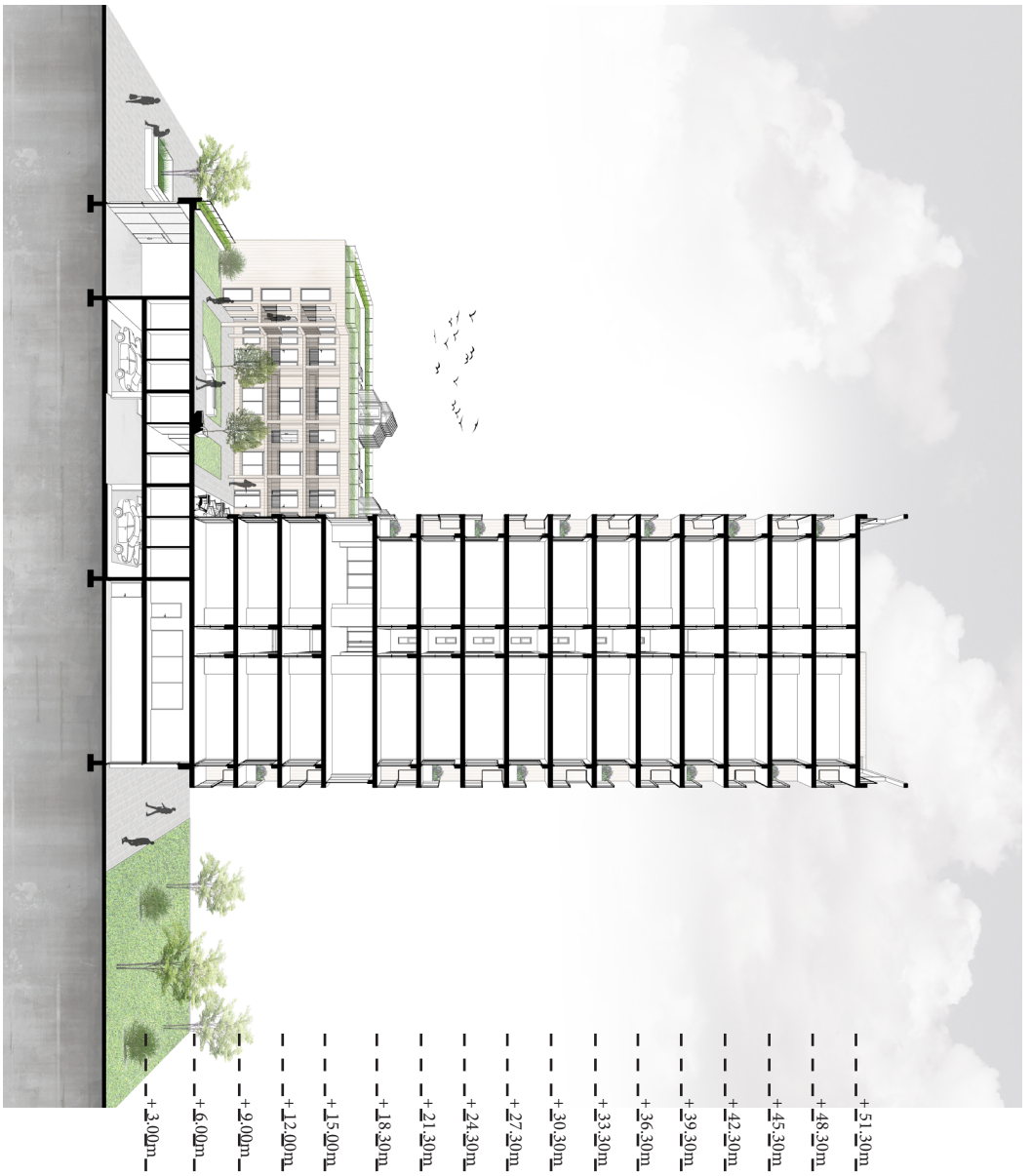


West elevation



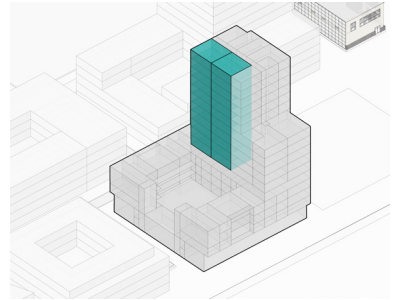
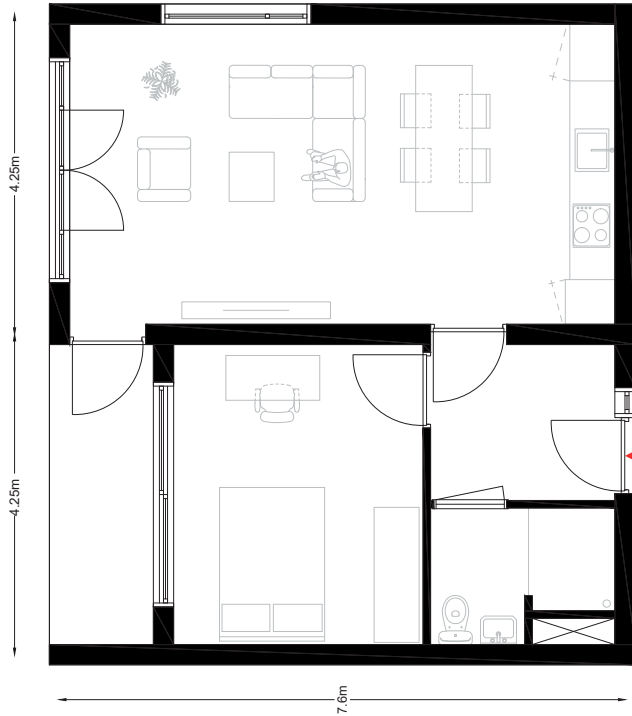
+ 3.00m  
 + 6.00m  
 + 9.00m  
 + 12.00m  
 + 15.00m





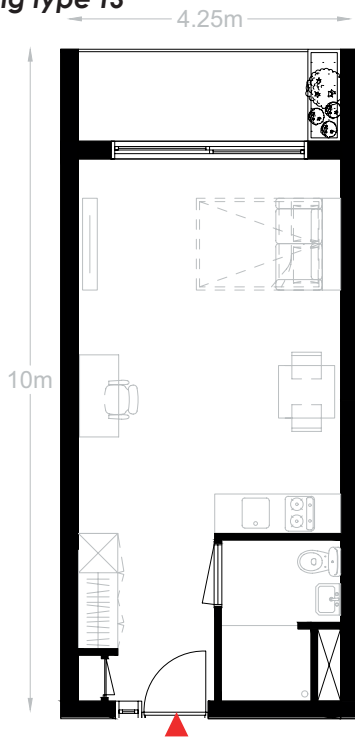
# Dwelling type T2 and point system

Defining the rent

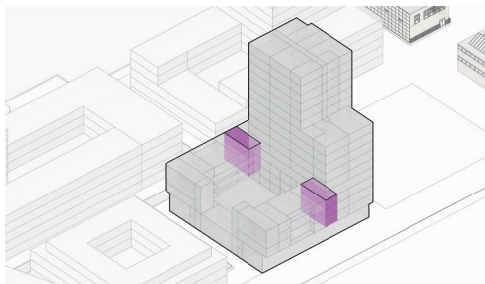


Designations	
Size	64.5 m <sup>2</sup>
Rent (all inclusive)	985.64 €
Division of the dwelling	Separated bedroom
Points	158
Storage	Yes
Kitchen	Full Kitchen
Private outdoor space	Loggia or Winter-garden
Communal facilities	Yes
Car charging	Yes
Bicycle storage	Yes

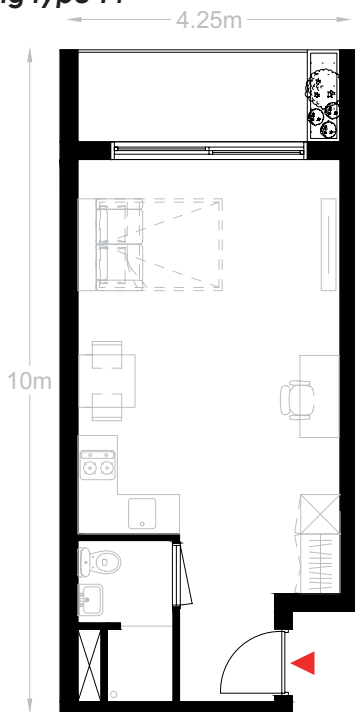
## Dwelling type T3



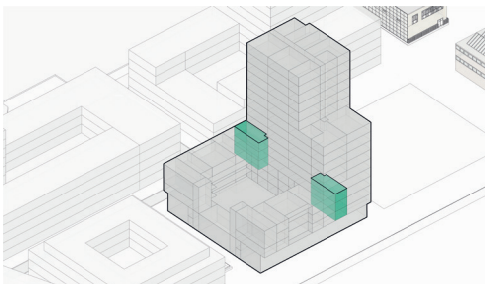
Designations	
Size	42.5 m <sup>2</sup>
Rent (all inclusive)	1007.42 €
Division of the dwelling	Combined
Points	144
Storage	No
Kitchen	Kitchenette
Private outdoor space	Loggia or Winter-garten
Communal facilities	Yes + communal kitchen
Car sharging	Yes
Bicycle storage	Yes



## Dwelling type T4

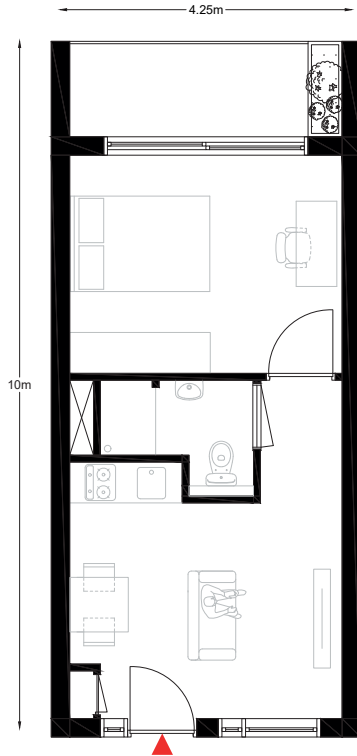


Designations	
Size	41 m <sup>2</sup>
Rent (all inclusive)	1001.15 €
Division of the dwelling	Combined
Points	137
Storage	No
Kitchen	Kitchenette
Private outdoor space	Loggia or Winter-garten
Communal facilities	Yes + communal kitchen
Car sharging	Yes
Bicycle storage	Yes

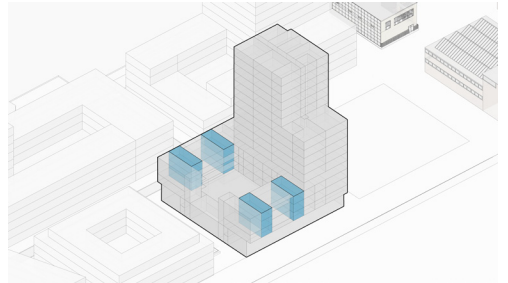




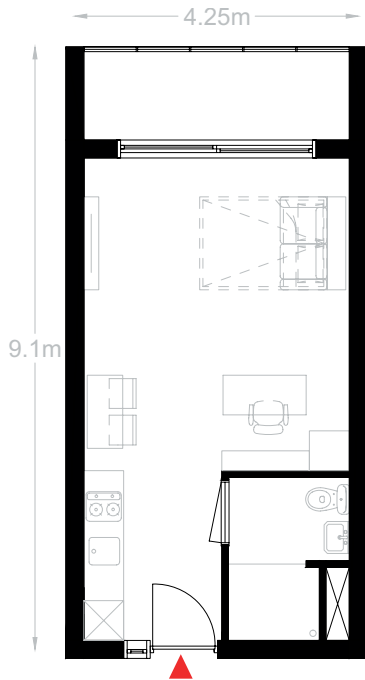
## Dwelling type T5



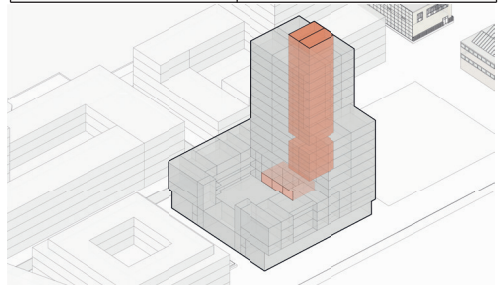
Designations	
Size	42.5 m <sup>2</sup>
Rent (all inclusive)	1007.42 €
Division of the dwelling	Separated bedroom
Points	144
Storage	No
Kitchen	Kitchenette
Private outdoor space	Loggia or Winter-garten
Communal facilities	Yes + communal kitchen
Car sharging	Yes
Bicycle storage	Yes



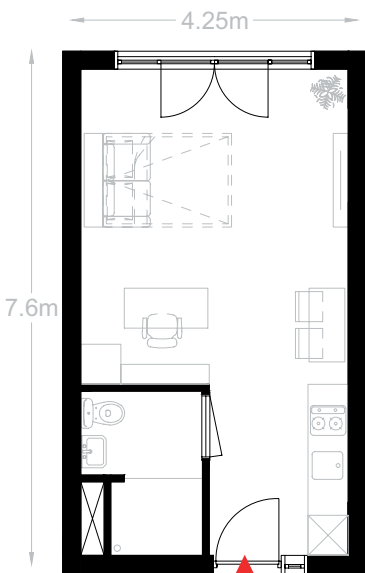
## Dwelling type T1



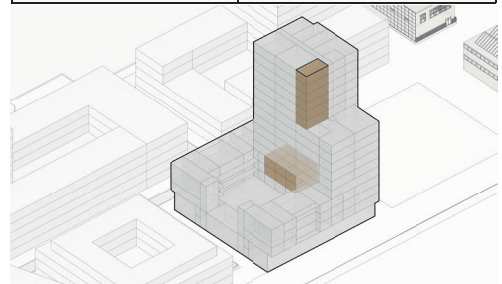
Designations	
Size	38.7 m <sup>2</sup>
Rent (all inclusive)	989.62 € or 880.05 €
Division of the dwelling	combined
Points	140
Storage	No
Kitchen	Kitchenette
Private outdoor space	Loggia/Winter-garden/Front yard
Communal facilities	Yes + communal kitchen (2 to 4)
Car sharging	Yes
Bicycle storage	Yes



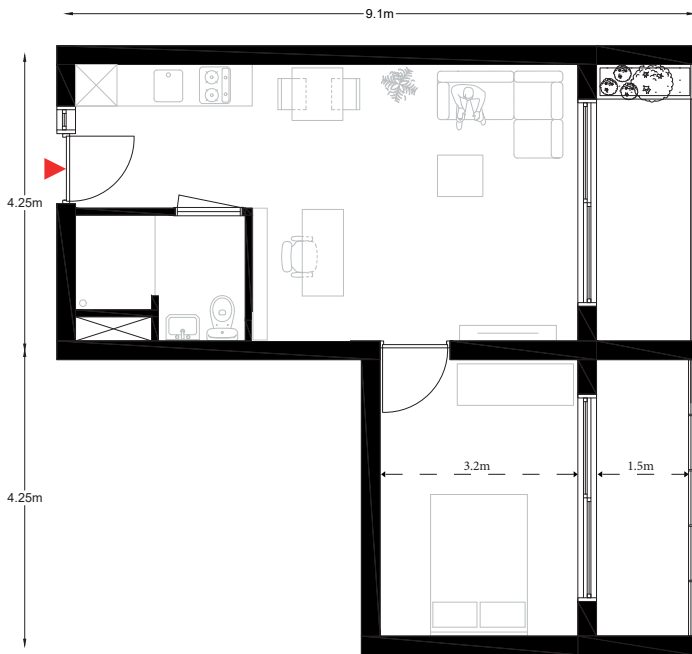
## Dwelling type T6



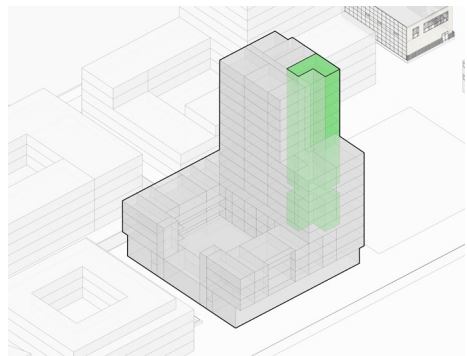
Designations	
Size	32.5 m <sup>2</sup>
Rent (all inclusive)	961.83 € or 852.26 €
Division of the dwelling	combined
Points	135
Storage	No
Kitchen	Kitchenette
Private outdoor space	No
Communal facilities	Yes + communal kitchen (2 to 4)
Car sharging	Yes
Bicycle storage	Yes



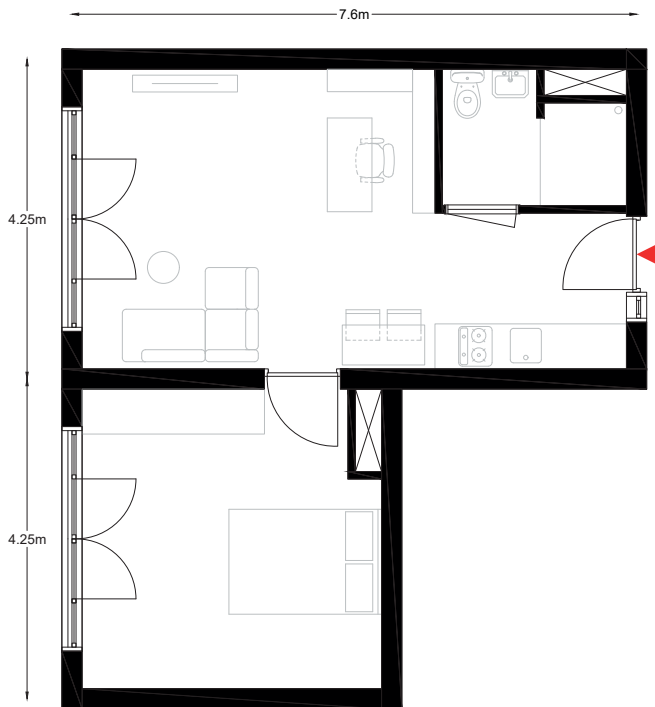
## Dwelling type T7



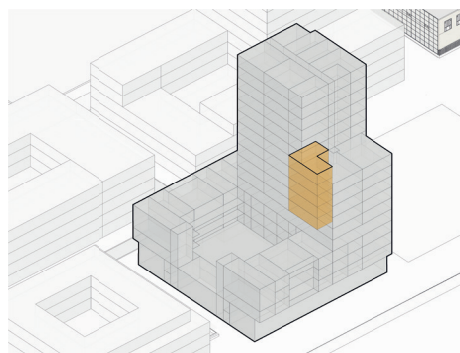
Designations	
Size	54 m <sup>2</sup>
Rent (all inclusive)	1,045.21 € or 935.46 €
Division of the dwelling	Separated bedroom
Points	149
Storage	Yes
Kitchen	Standard
Private outdoor space	Loggia or Winter-garden
Communal facilities	Yes + communal kitchen (2 to 4)
Car sharging	Yes
Bicycle storage	Yes



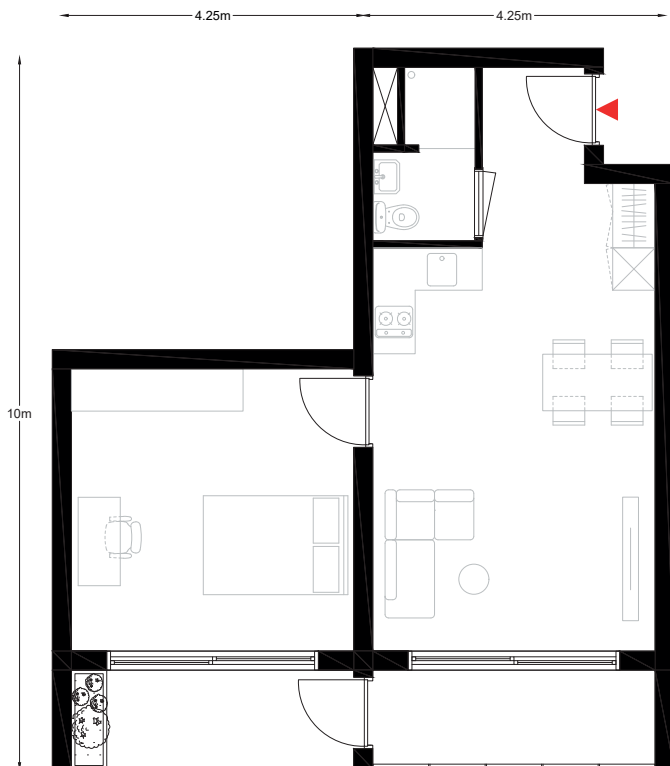
# Dwelling type T8



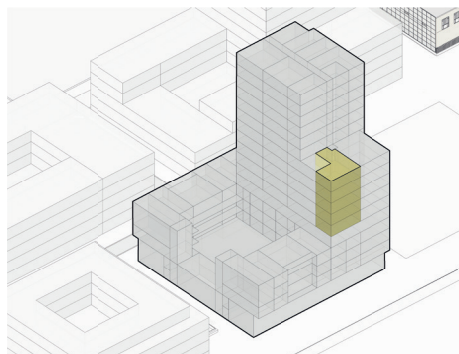
Designations	
Size	46 m <sup>2</sup>
Rent (all inclusive)	913.42 €
Division of the dwelling	Separated bedroom
Points	145
Storage	No
Kitchen	Standard
Private outdoor space	No
Communal facilities	Yes
Car charging	Yes
Bicycle storage	Yes



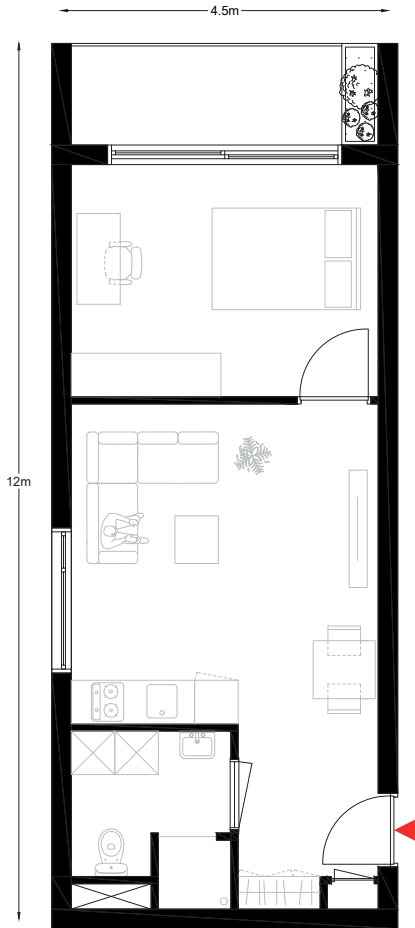
## Dwelling type T9



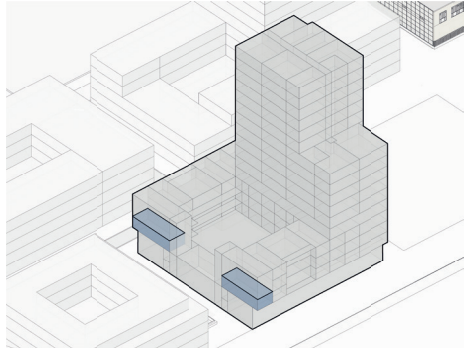
Designations	
Size	60 m <sup>2</sup>
Rent (all inclusive)	952,3 €
Division of the dwelling	Separated bedroom
Points	152
Storage	yes
Kitchen	Standard
Private outdoor space	Loggia and Winter-garden
Communal facilities	Yes
Car sharging	Yes
Bicycle storage	Yes



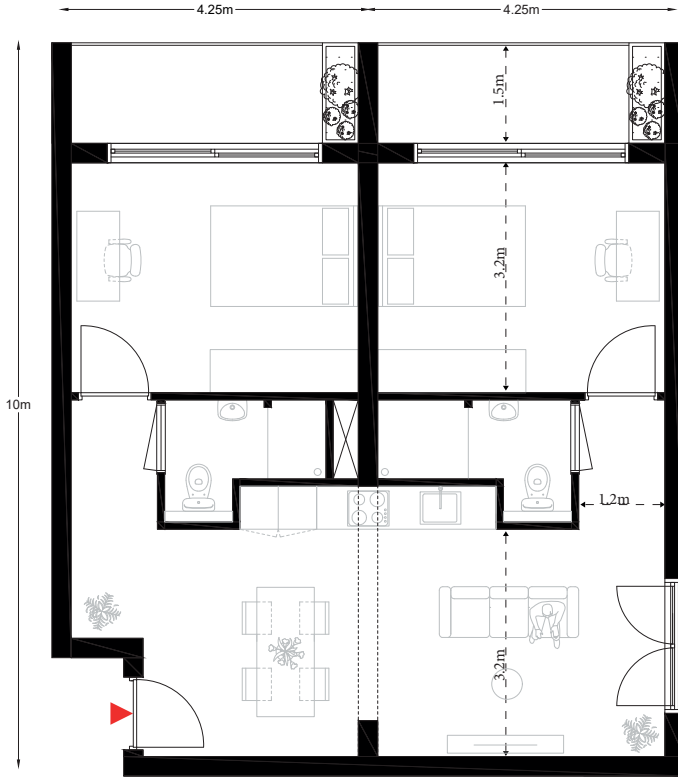
## Dwelling type T10



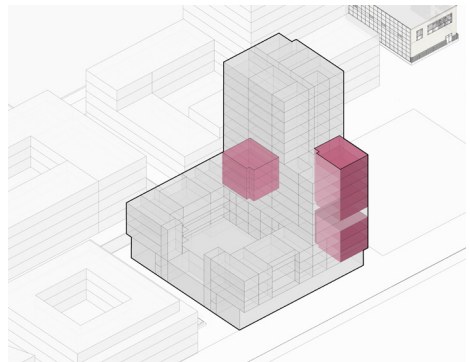
Designations	
Size	54 m <sup>2</sup>
Rent (all inclusive)	930.08 €
Division of the dwelling	Separated bedroom
Points	148
Storage	Yes
Kitchen	Standard
Private outdoor space	Loggia
Communal facilities	Yes + communal kitchen
Car sharging	Yes
Bicycle storage	Yes



# Dwelling type T11

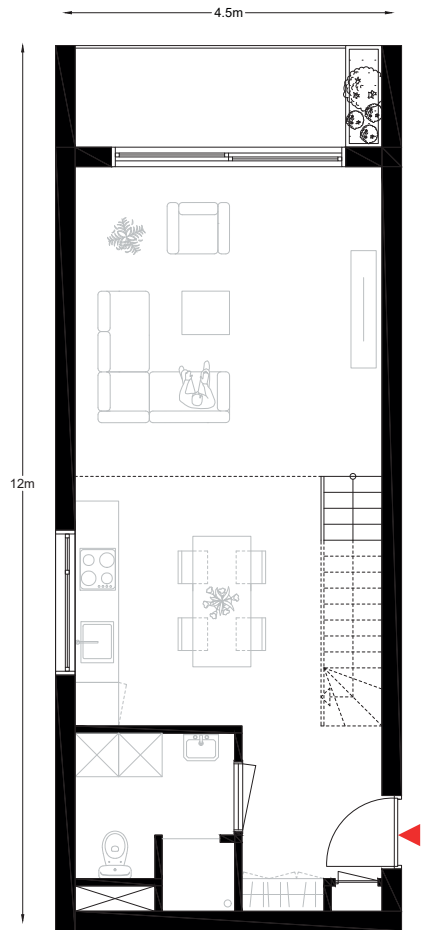
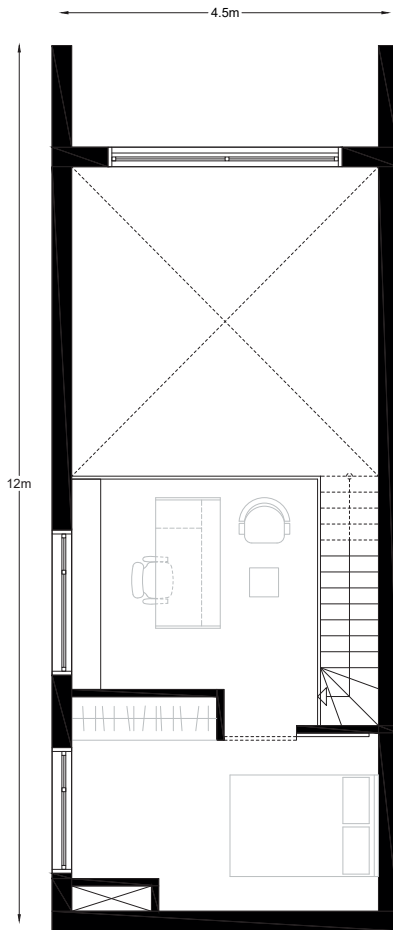


Designations	
Size	83.5 m <sup>2</sup>
Rent (all inclusive)	1,082.98 € ( two tenants)
Division of the dwelling	Fiends apartment
Points	242
Storage	Yes
Kitchen	Full kitchen
Private outdoor space	Loggia
Communal facilities	Yes
Car sharging	Yes
Bicycle storage	Yes

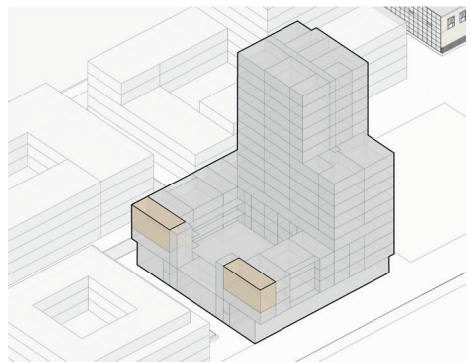




# Dwelling type T12

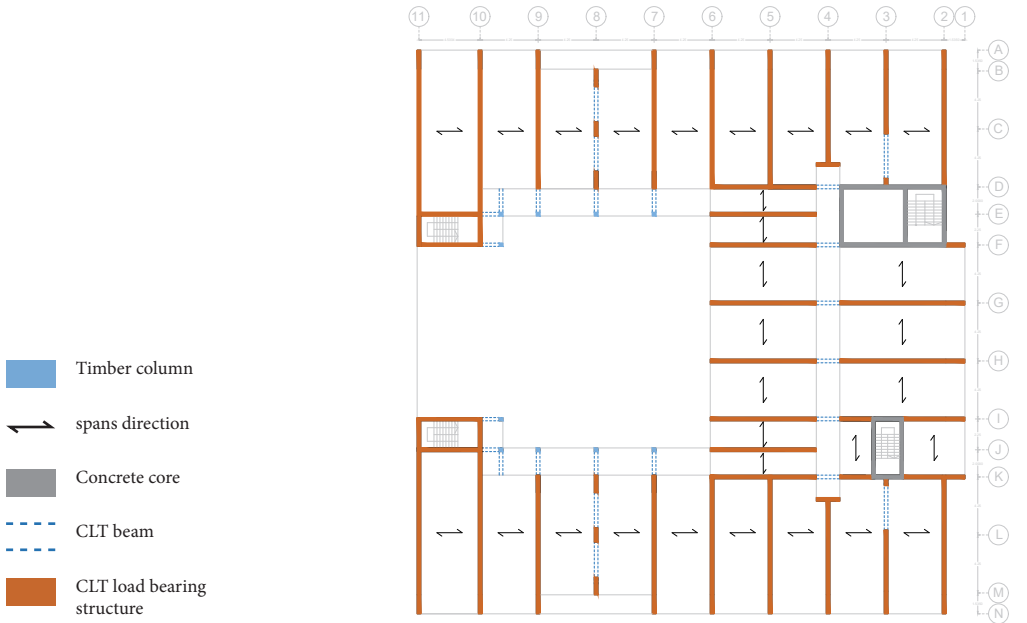
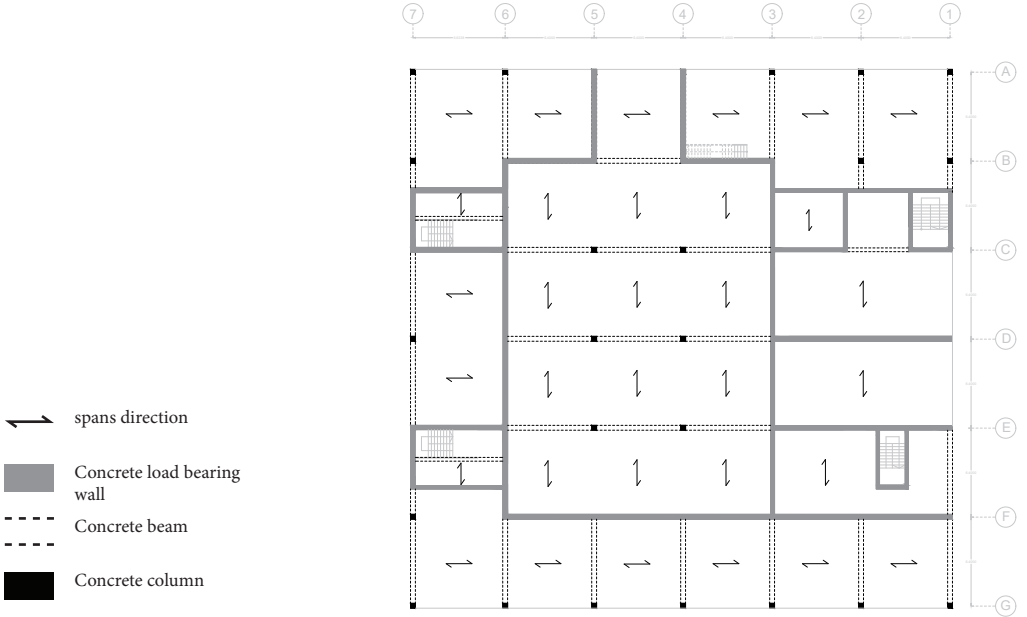


Designations	
Size	71 m <sup>2</sup>
Price (all inclusive)	1030.12 €
Division of the dwelling	Duplex / Separated bedroom
Points	166
Storage	Yes
Kitchen	Full Kitchen
Private outdoor space	Loggia
Communal facilities	Yes
Car charging	Yes
Bicycle storage	Yes

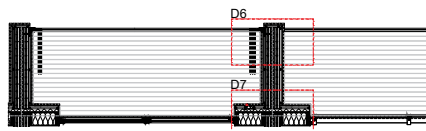
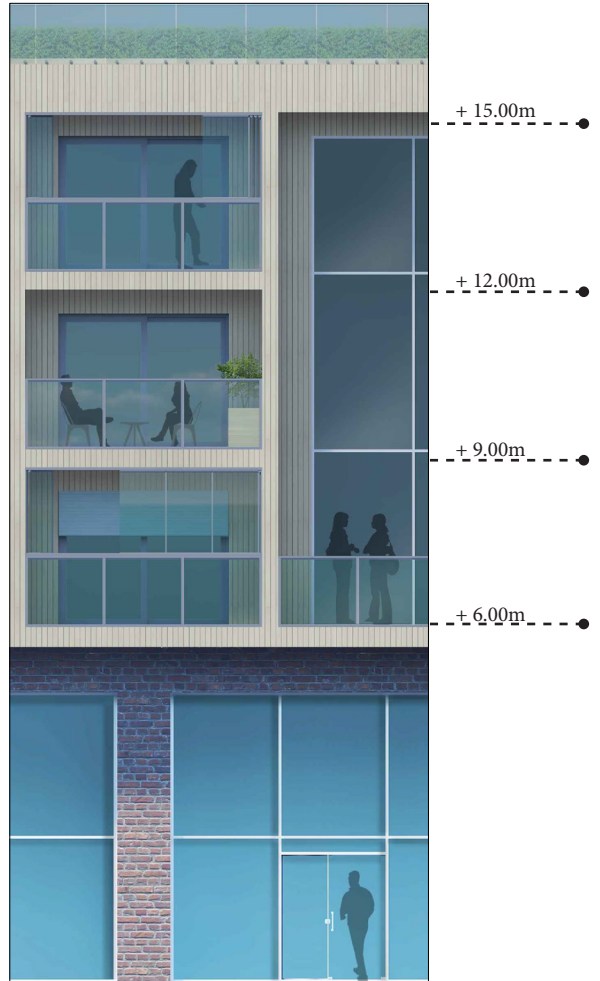
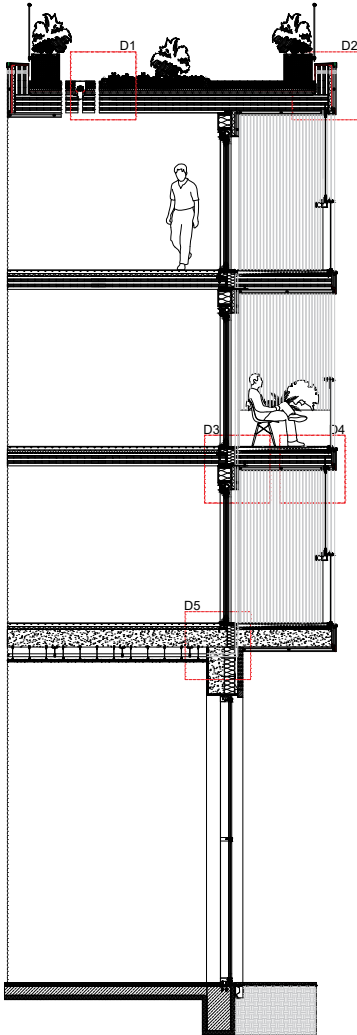


# Building Technology

# Construction plans



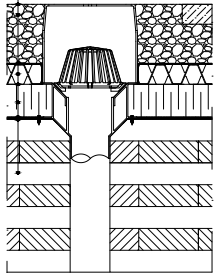
# Facade fragment



# D1

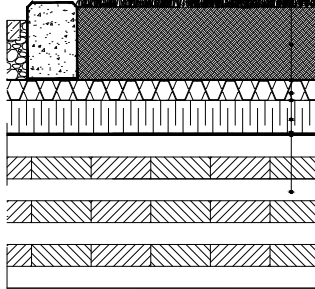
Layers: up to down

- Pavers
- Smooth gravel 100mm
- Filtration layer
- Drainage board
- Water protection
- Foundation foil
- Rigid insulation (XPS foam) 70mm
- Root protection
- Vapor control later
- CLT slap 300mm

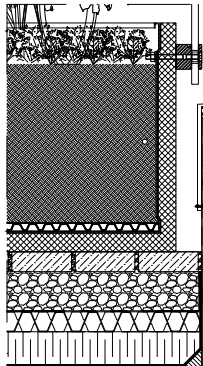


Layers: up to down

- Vegetation
- Vegetation layer 140mm
- Filtration layer
- Drainage board
- Water protection
- Rigid insulation (XPS foam) 70mm
- Root protection
- Vapor control later
- CLT slap 300mm

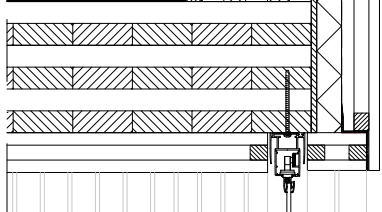


# D2



Layers: from left to right

- Sheet-metal parapet cap sloped to drain roof side
- Waterproofing membrane
- CLT wall 220 mm
- Pressed wood fiber insulation 13mm
- Waterproofing membrane
- Treated patterns
- Thermo-wood cladding



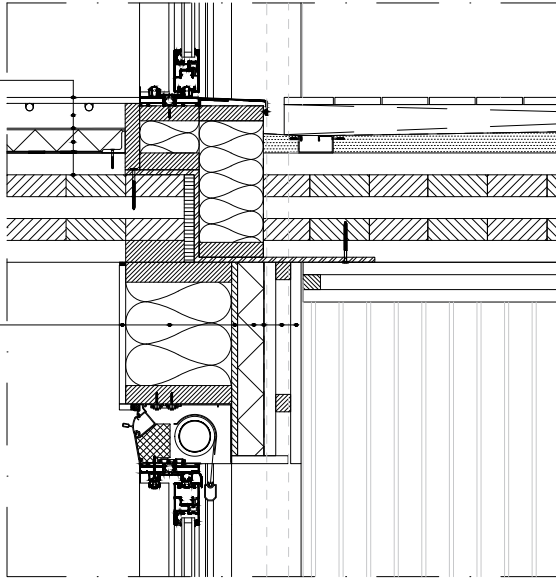
# D3

Layers: up to down

- Laminate floor 10mm
- Cement cross with integrated under-floor heating 50mm
- Separating layer
- Impact sound insulation 33mm
- Protection layer
- Load-bearing CLT structure 220mm

Layers: left to right

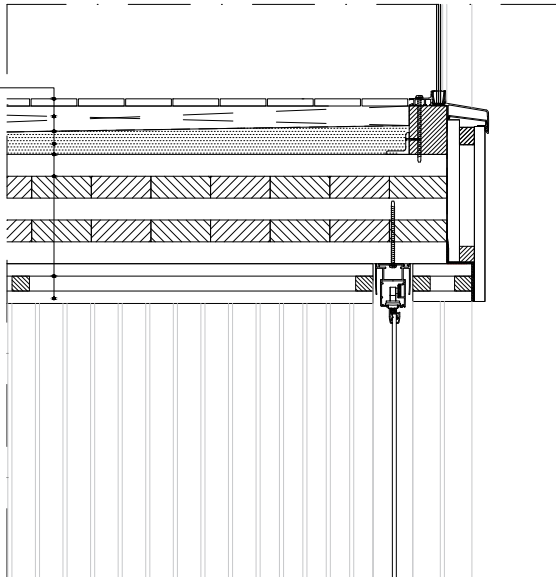
- Fire safety gypsum-board 13mm
- Insulation 200mm
- Pressed wood fiber insulation 13mm
- Insulation 53mm
- Waterproofing membrane
- Treated patterns
- Thermo-wood cladding



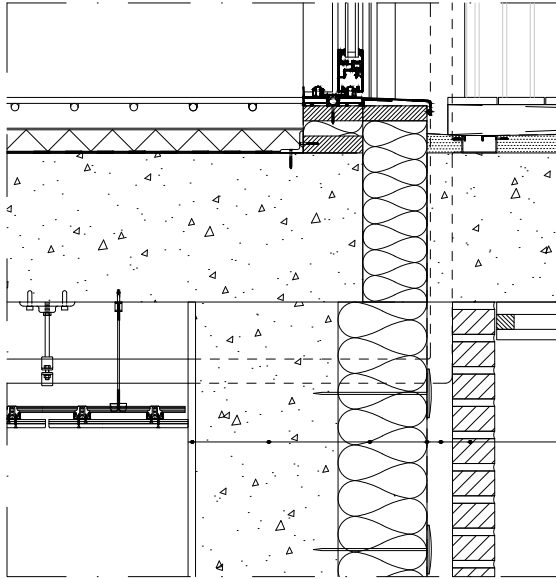
# D4

Layers: up to down

- Timber decking
- Timber bars for raising the floor
- Waterproofing membrane
- concrete layer for grading (slope of 1%)
- Separation layer
- Load-bearing CLT structure 220mm
- Treated patterns
- Thermo-wood cladding

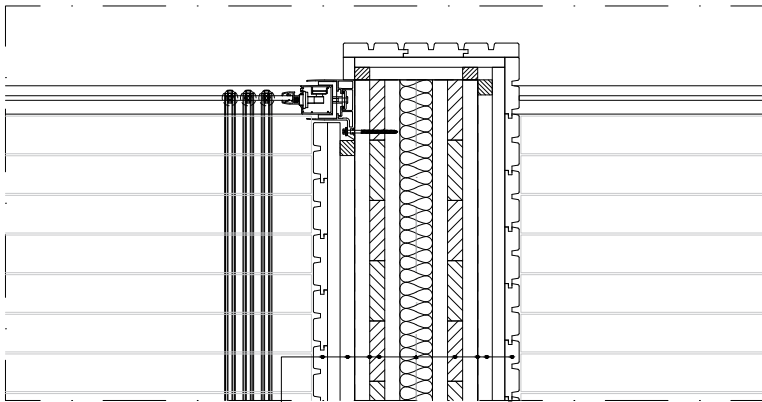


# D5



- Layers: left to right
- Gypsum-board 15mm
  - Concrete beam
  - Insulation 180mm
  - Waterproofing membrane
  - Air cavity 60mm
  - Brick 100mm

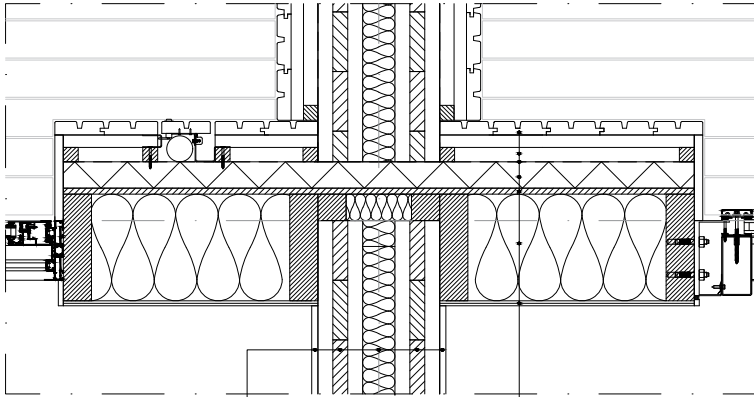
# D6



- Layers: inner wall from left to right
- Thermo-wood cladding
  - Treated patterns
  - Waterproofing membrane
  - CLT wall 90mm
  - Insulation 65mm
  - CLT wall 90mm
  - Waterproofing membrane
  - Treated patterns
  - Thermo-wood cladding



# D7



Layers: inner wall from left to right

- Gypsum board 12,5mm
- Load bearing CLT wall 90mm
- Insulation 65mm
- Load bearing CLT wall 90mm
- Gypsum board 12,5mm

Layers: outer-wall from up to down

- Thermo-wood cladding
- Treated patterns
- Waterproofing membrane
- Insulation 53mm
- Pressed wood fiber insulation 13mm
- Timber frame with soft-wood fiber insulation 210mm
- Gypsum board 10mm

**TU Delft**  
**November 2021**

