



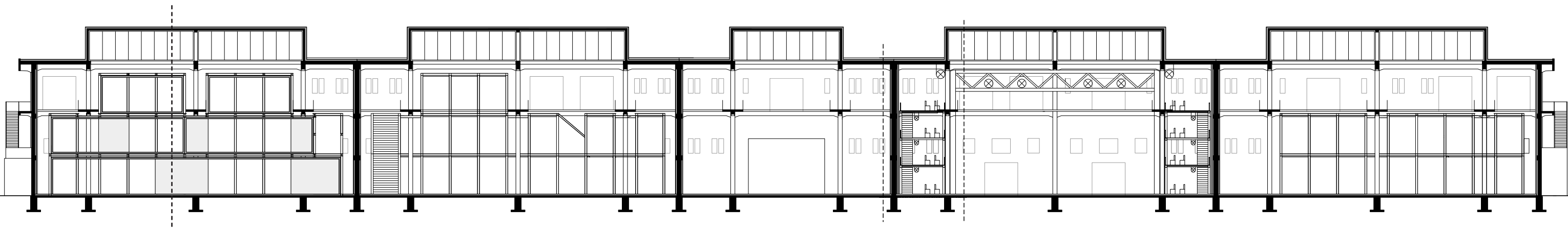
C

1

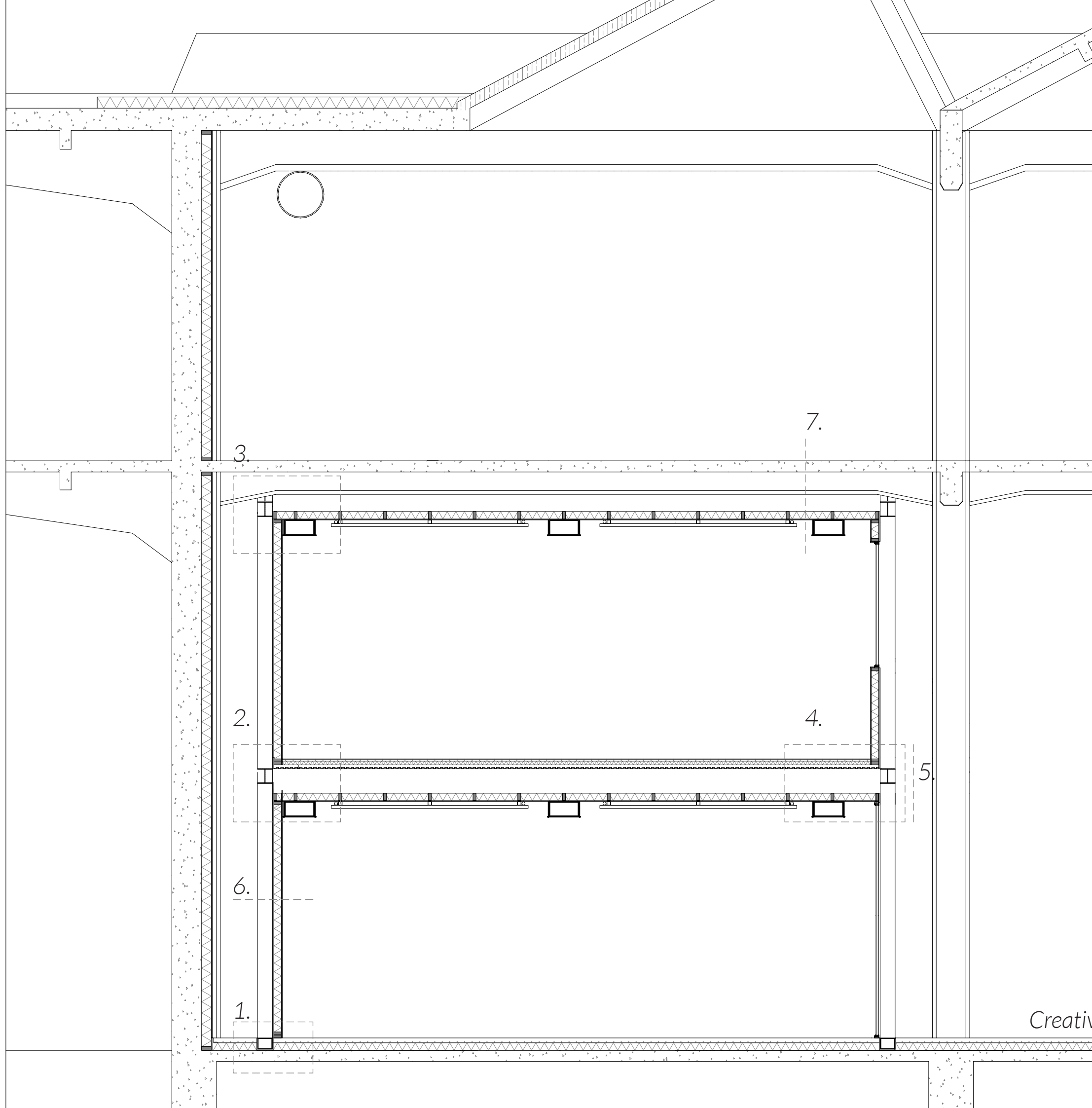
A. C. STERBA. BV
EXPEDITE

P5 Details
Elmer Pietersma

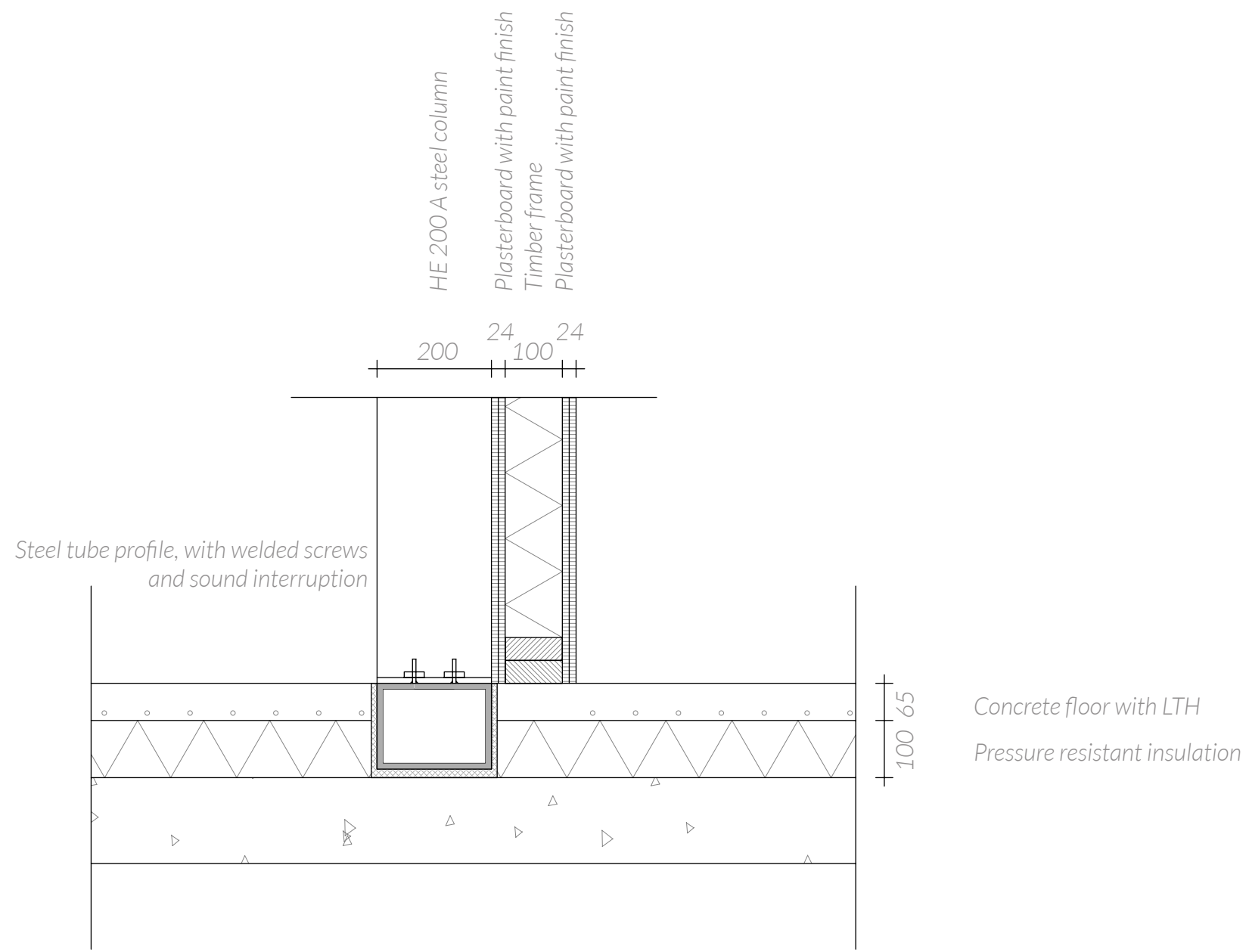
Katoenveem



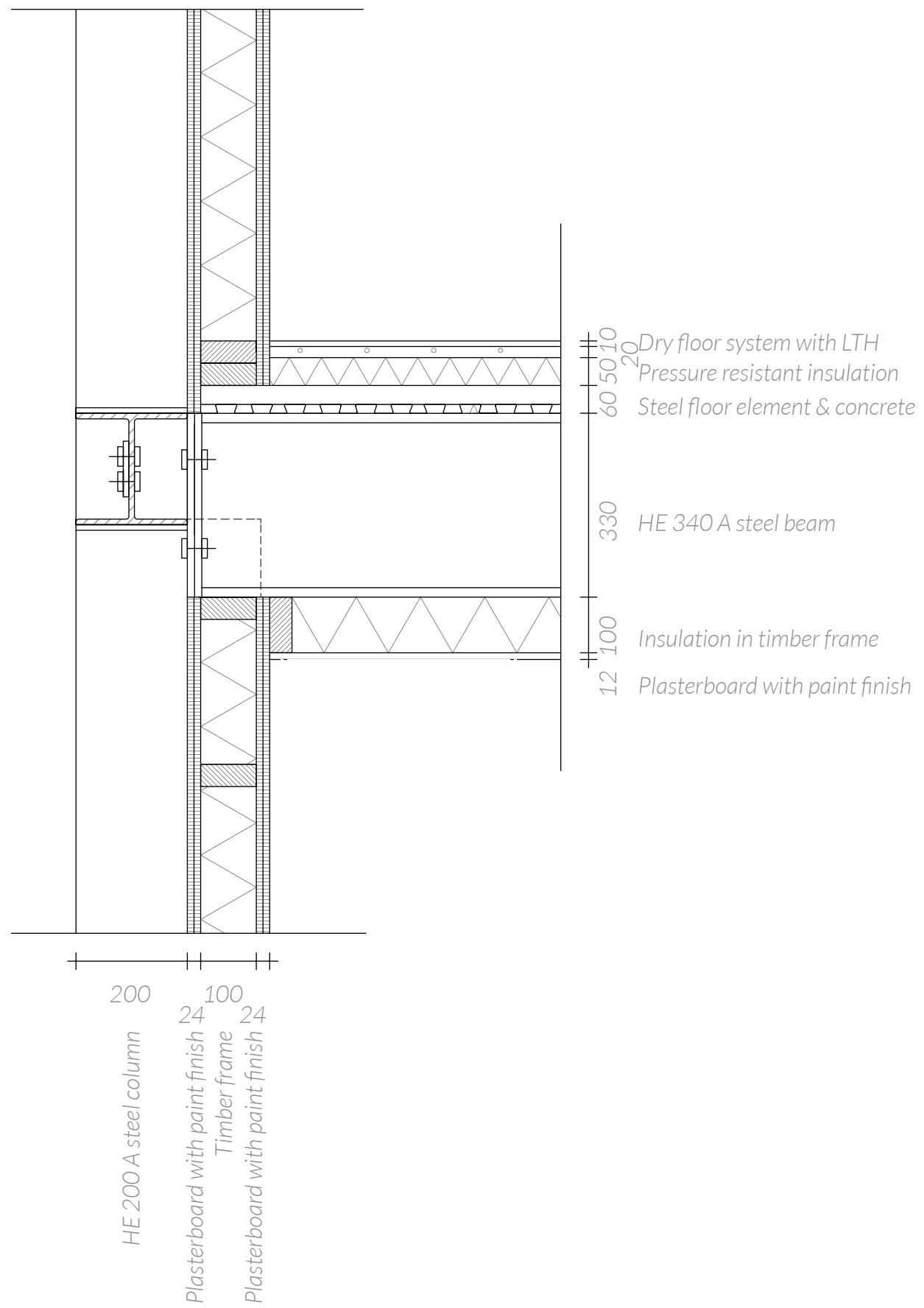
Location of the fragments

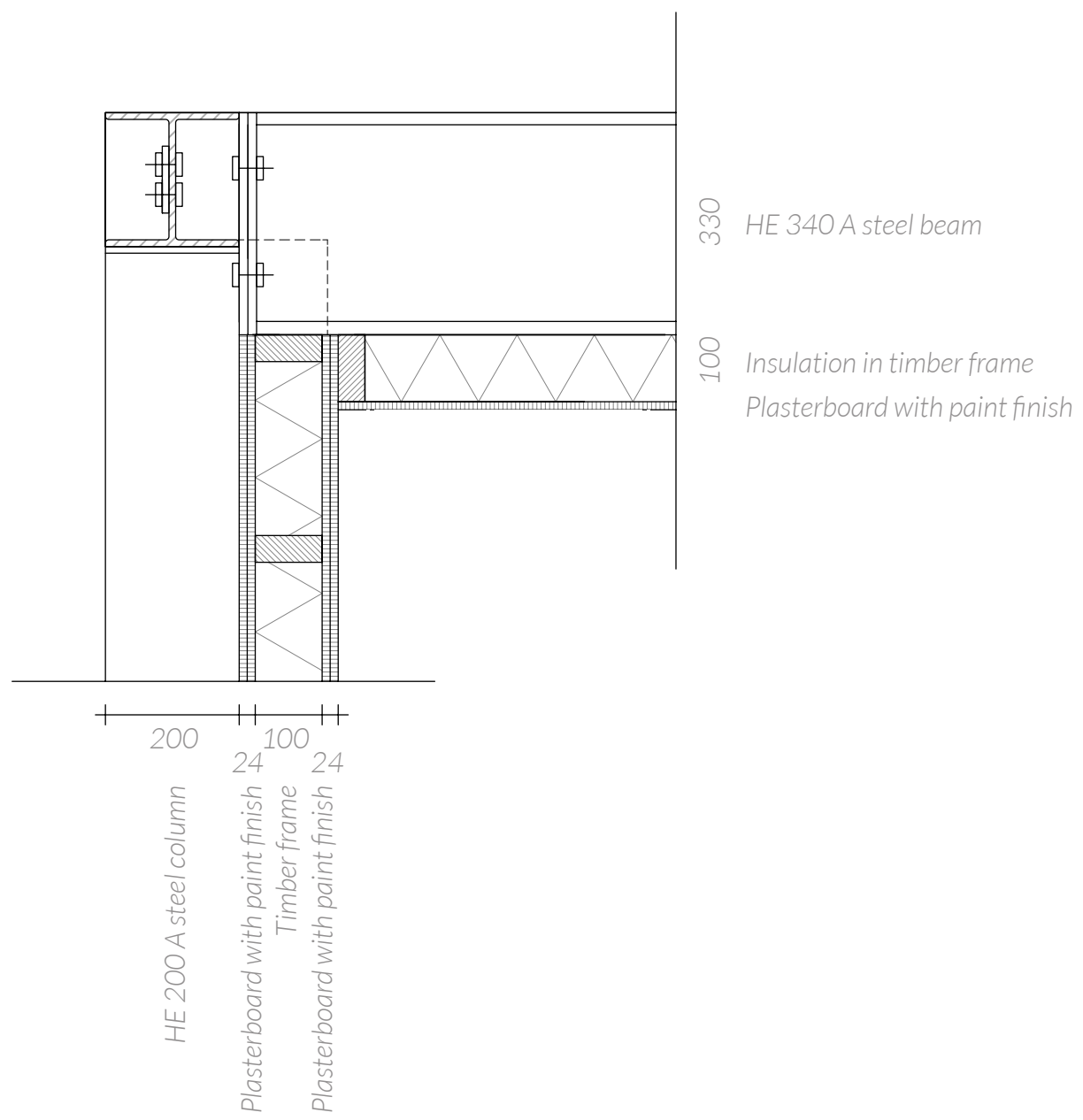


Creative workspaces fragment
1:50

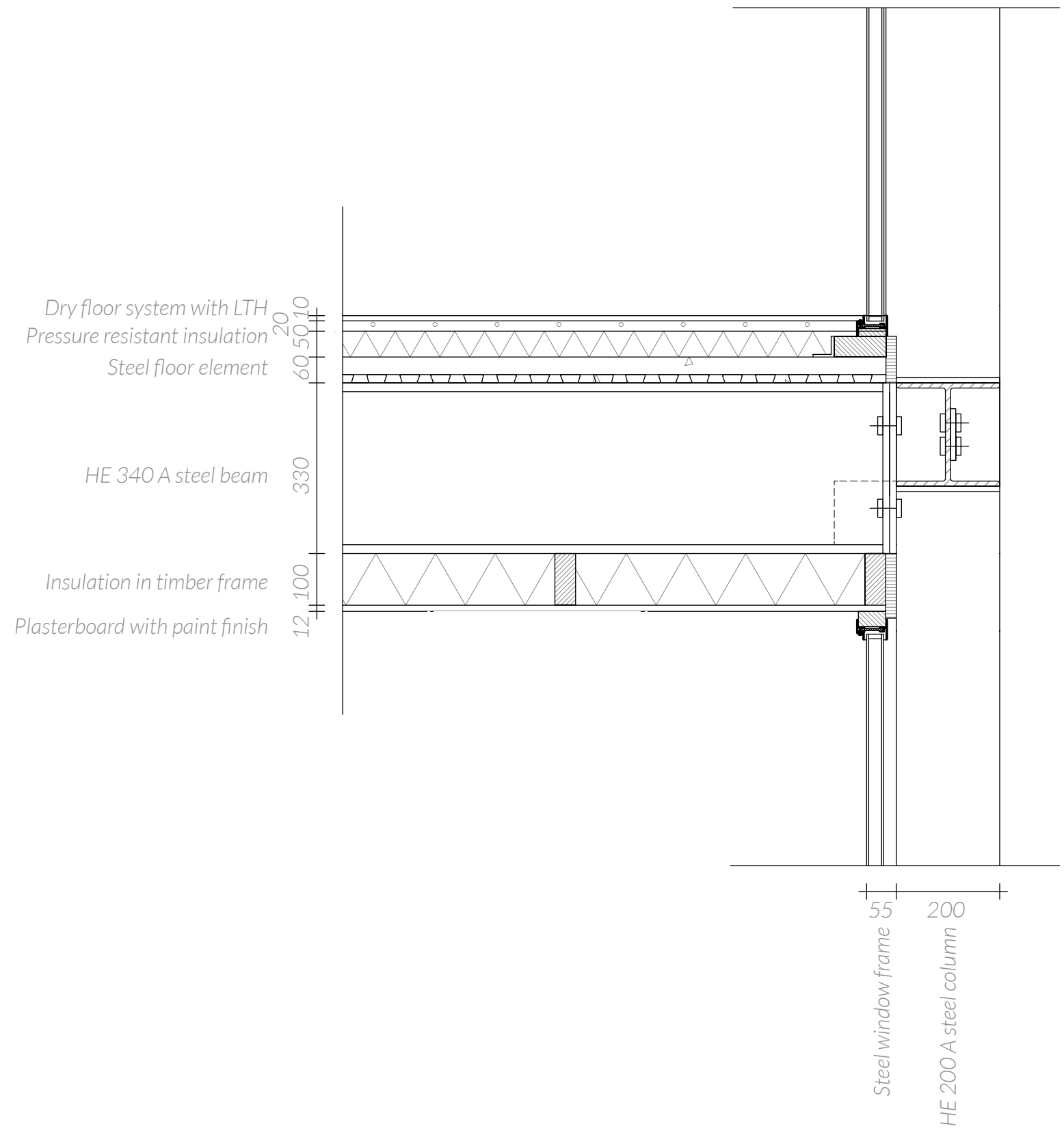


Detail 1 creative workspaces
 1:10

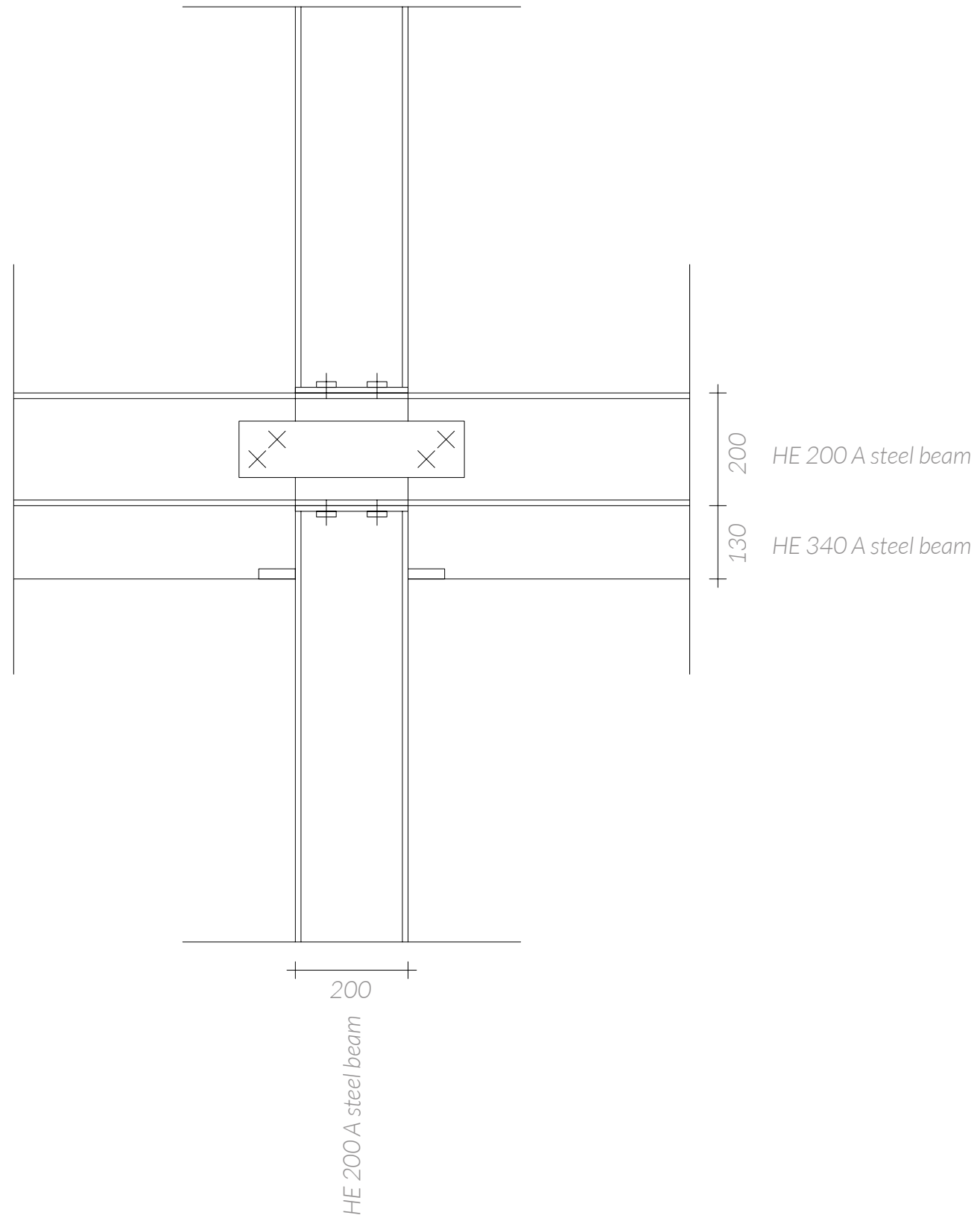




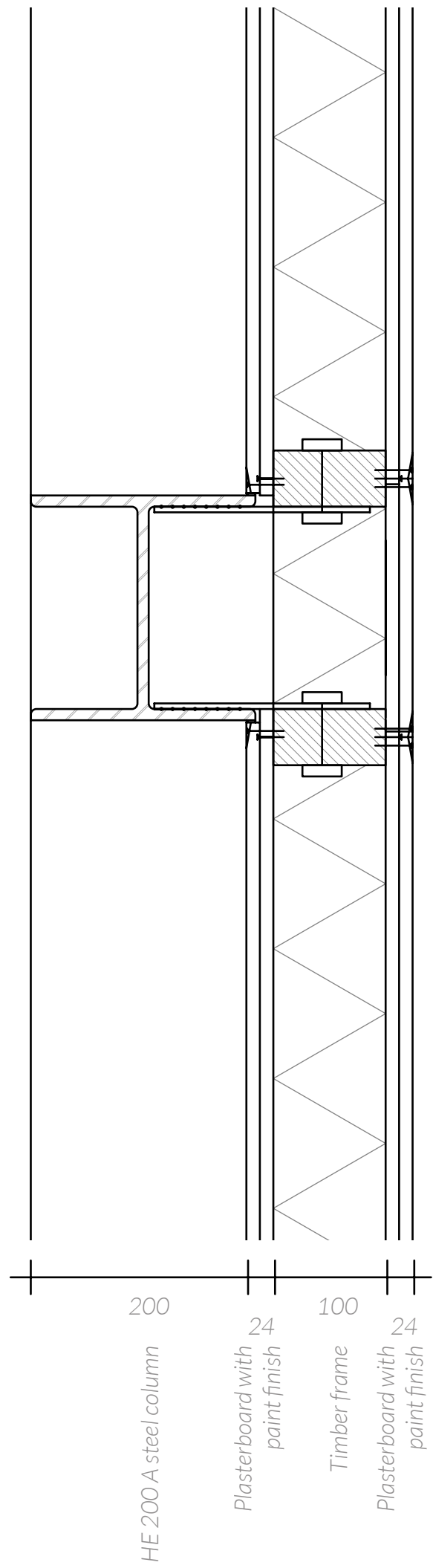
Detail 3 creative workspaces
1:10

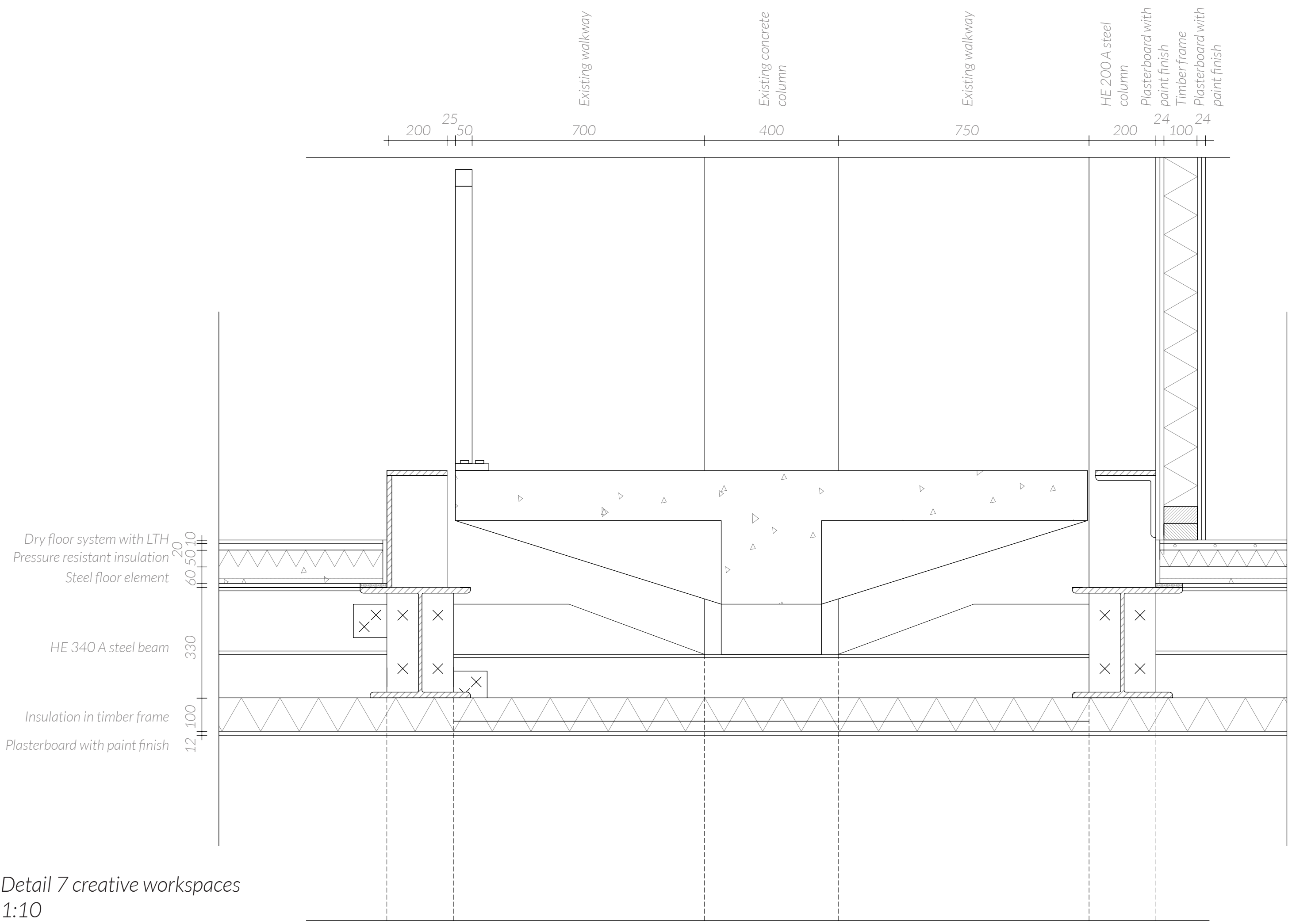


Detail 4 creative workspaces
 1:10

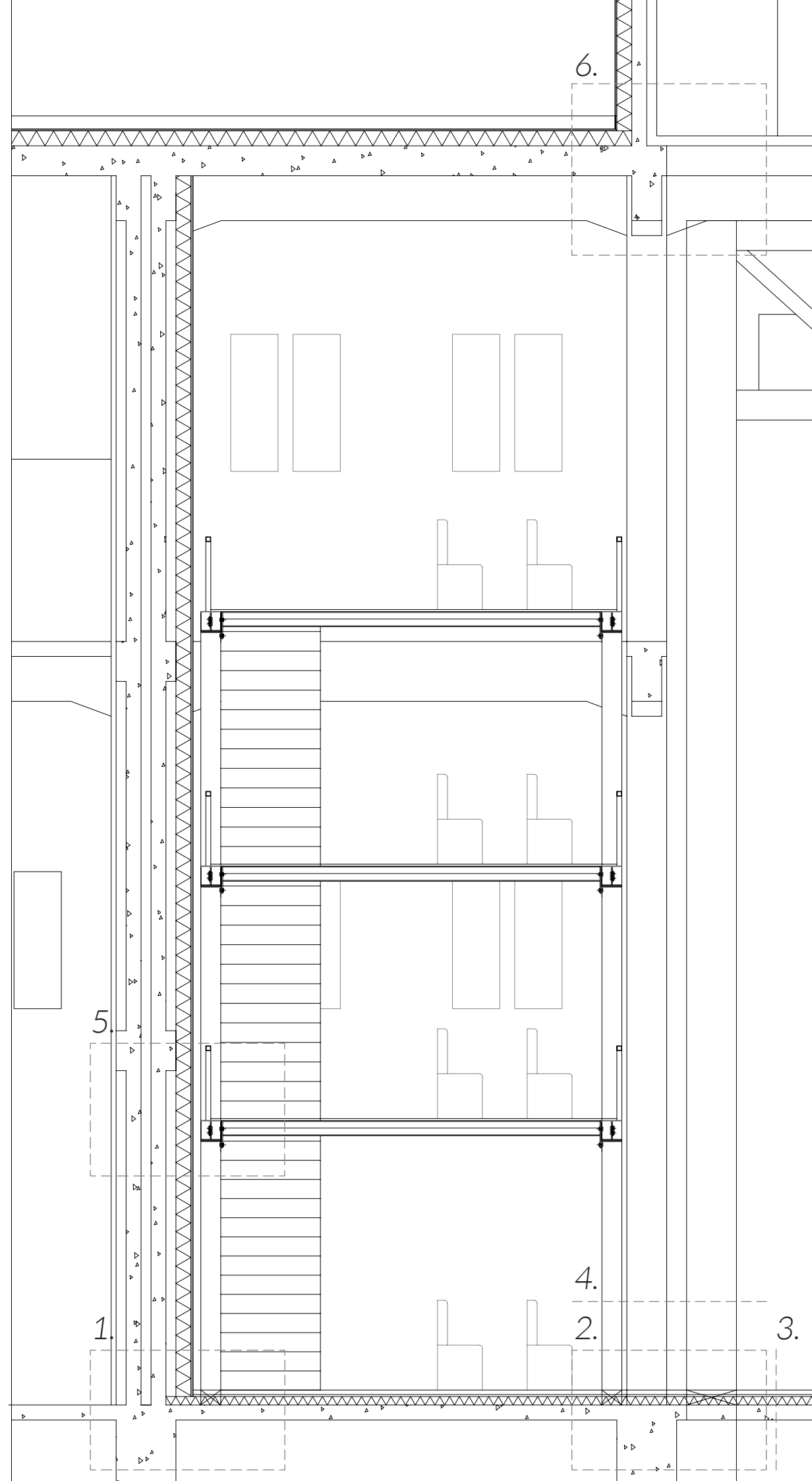


Detail 5 creative workspaces
1:10

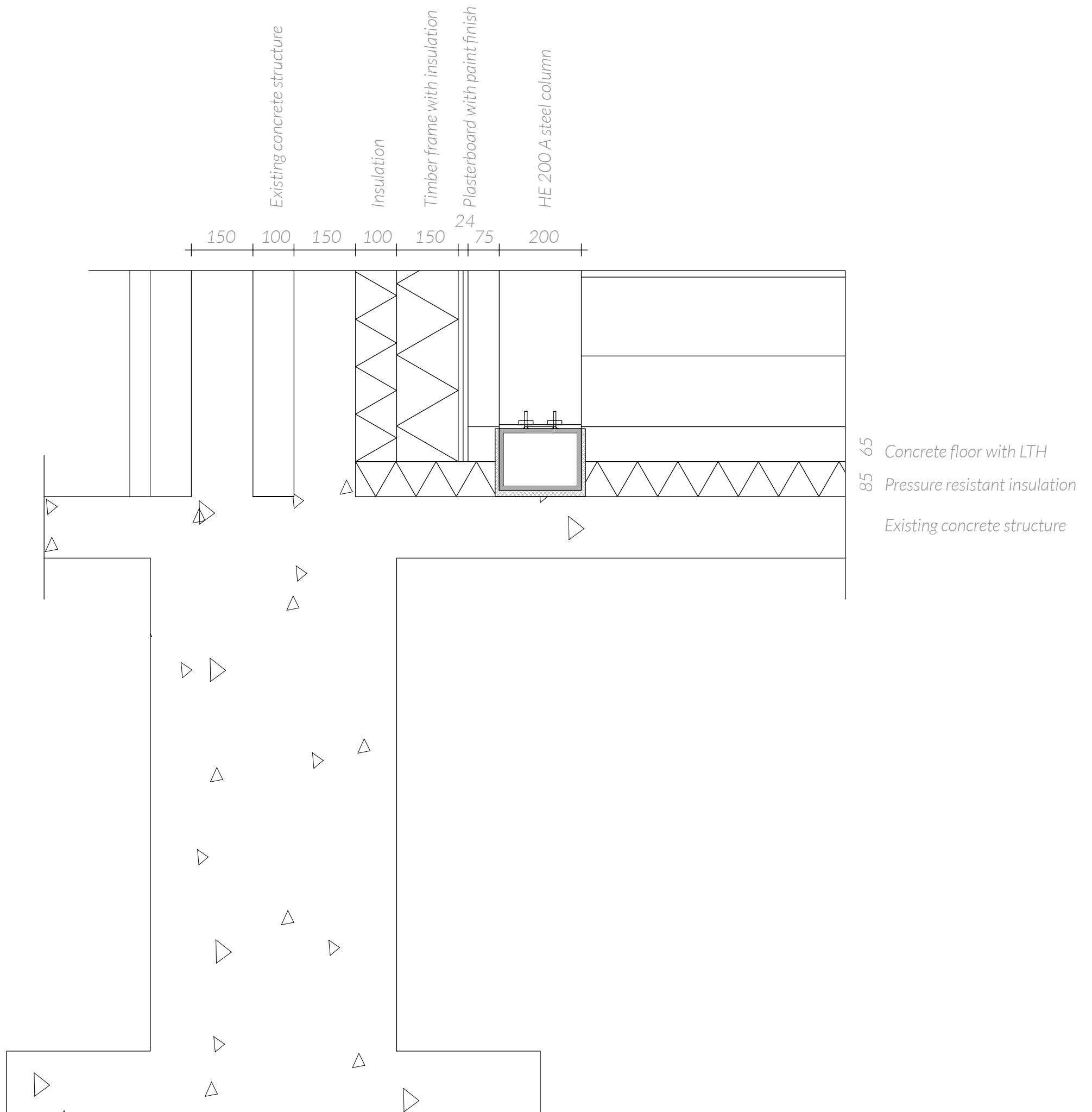




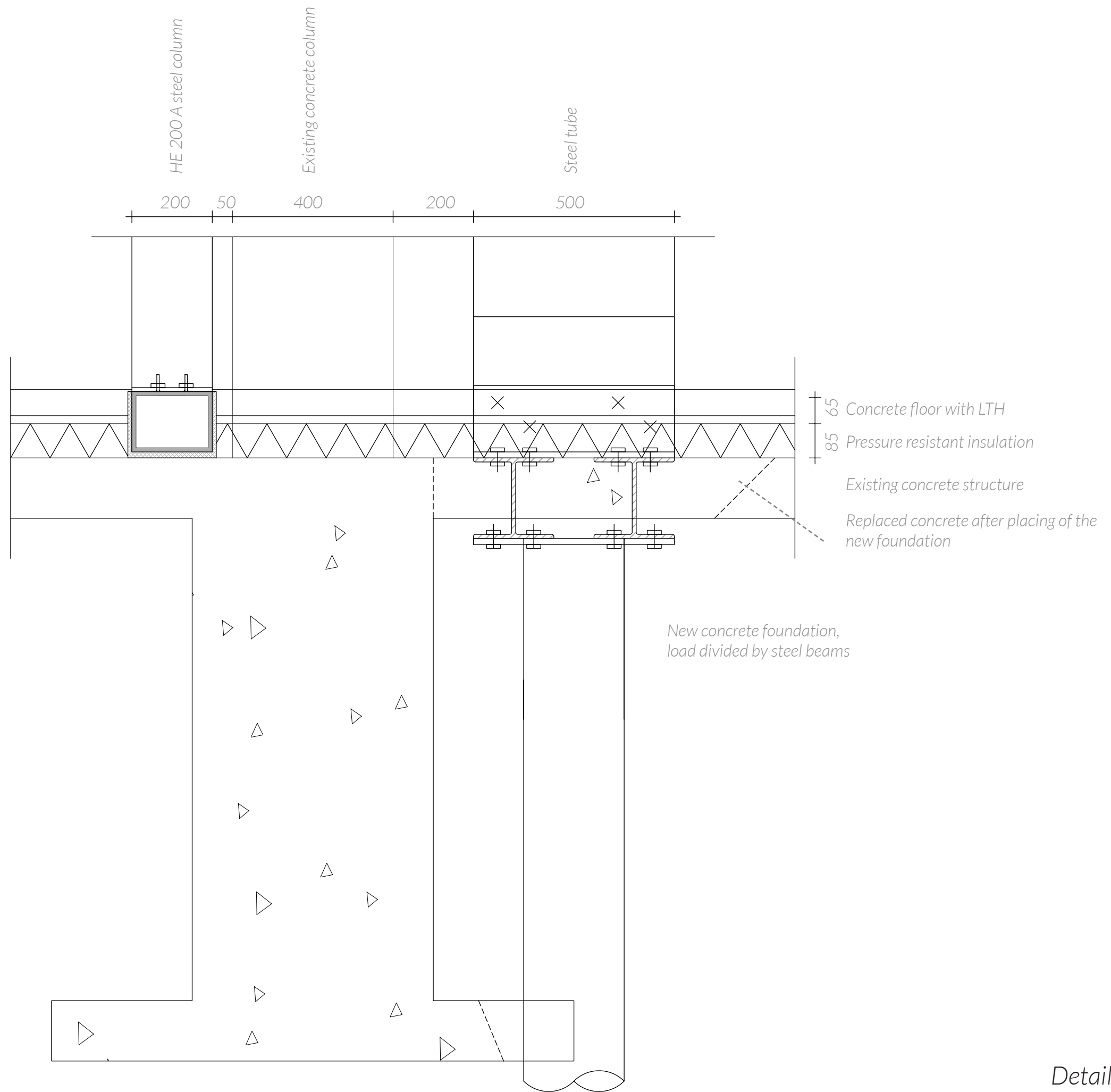
Detail 7 creative workspaces
1:10



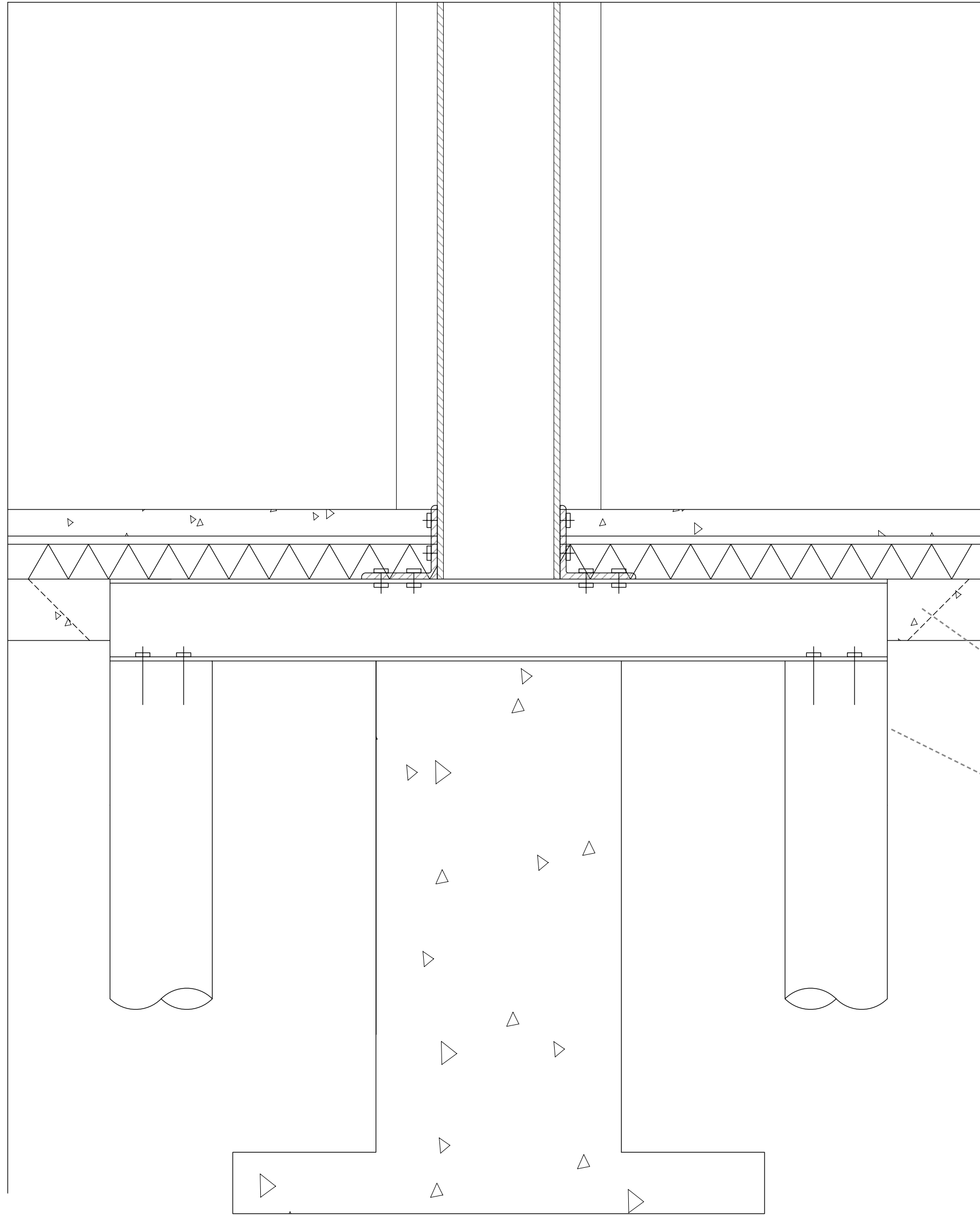
Theatre fragment
1:50



Detail 1 theatre
1:10



Detail 2 theatre
1:10



- 65 Concrete floor with LTH
- 85 Pressure resistant insulation
- Existing concrete structure
- Replaced concrete after placing of the new foundation
- New concrete foundation, load divided by steel beams

Detail 3 theatre
1:10

HE 200 A steel column

200

50

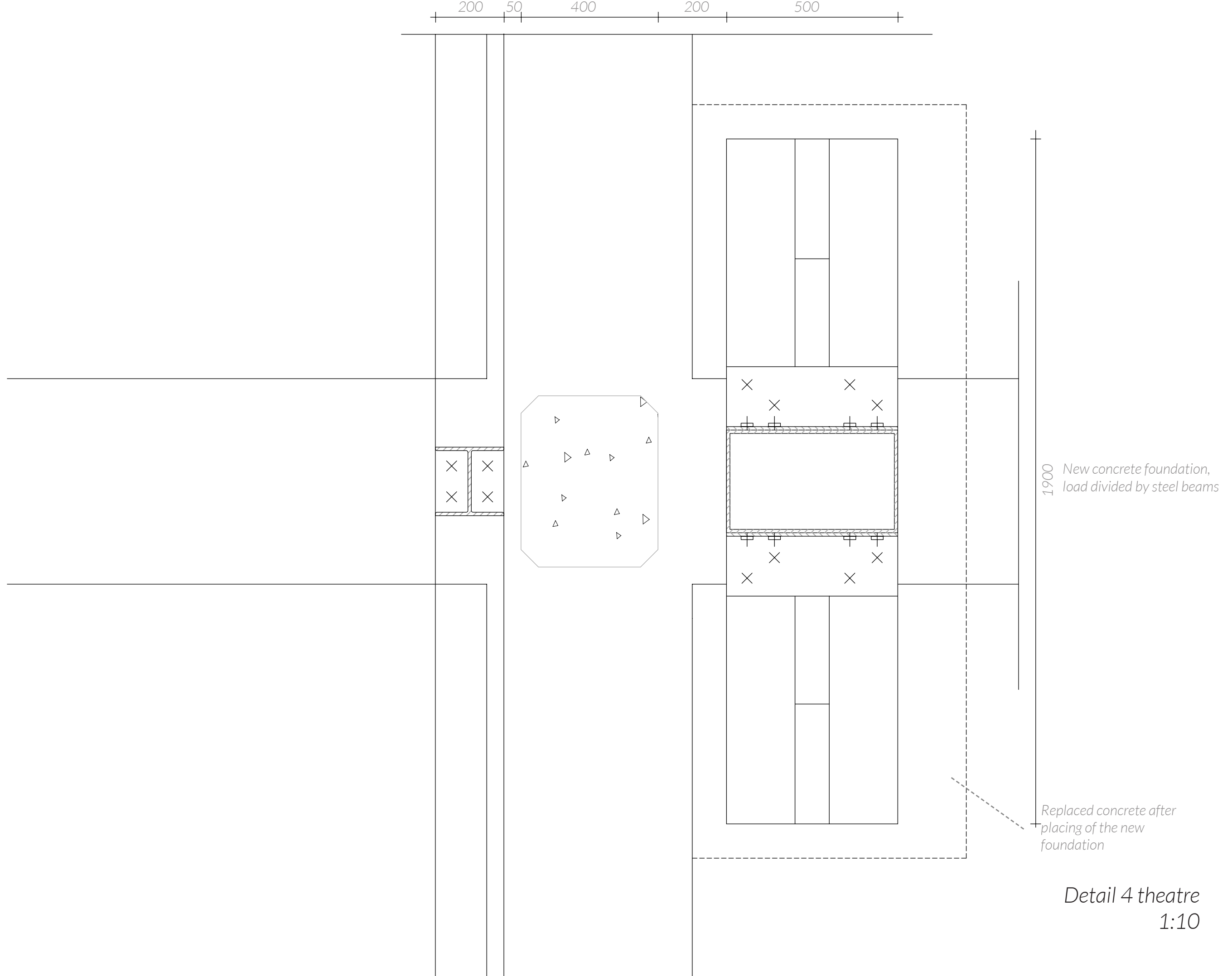
Existing concrete column

400

200

Steel tube

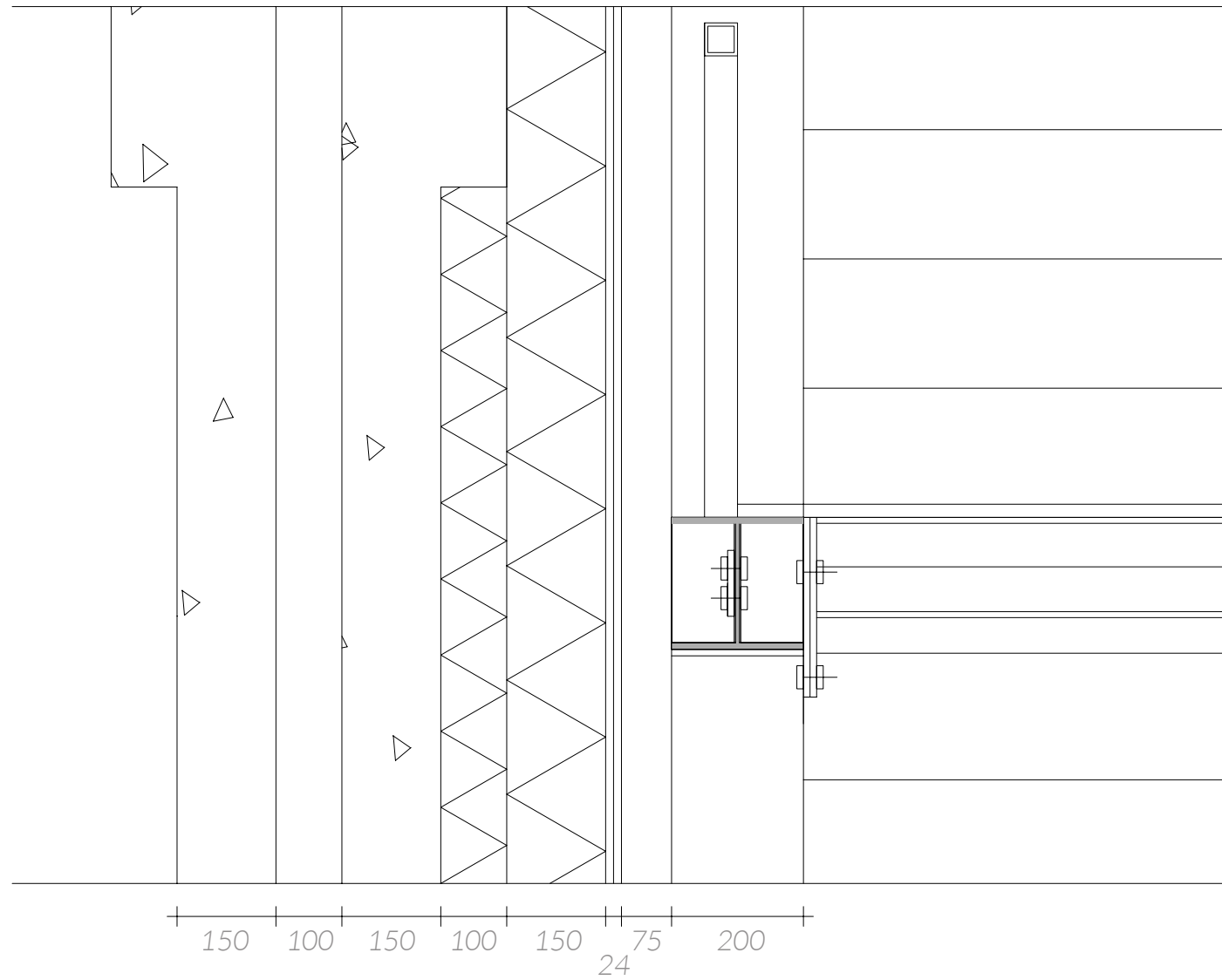
500



1900 New concrete foundation,
load divided by steel beams

Replaced concrete after
placing of the new
foundation

Detail 4 theatre
1:10



Existing concrete structure

Insulation

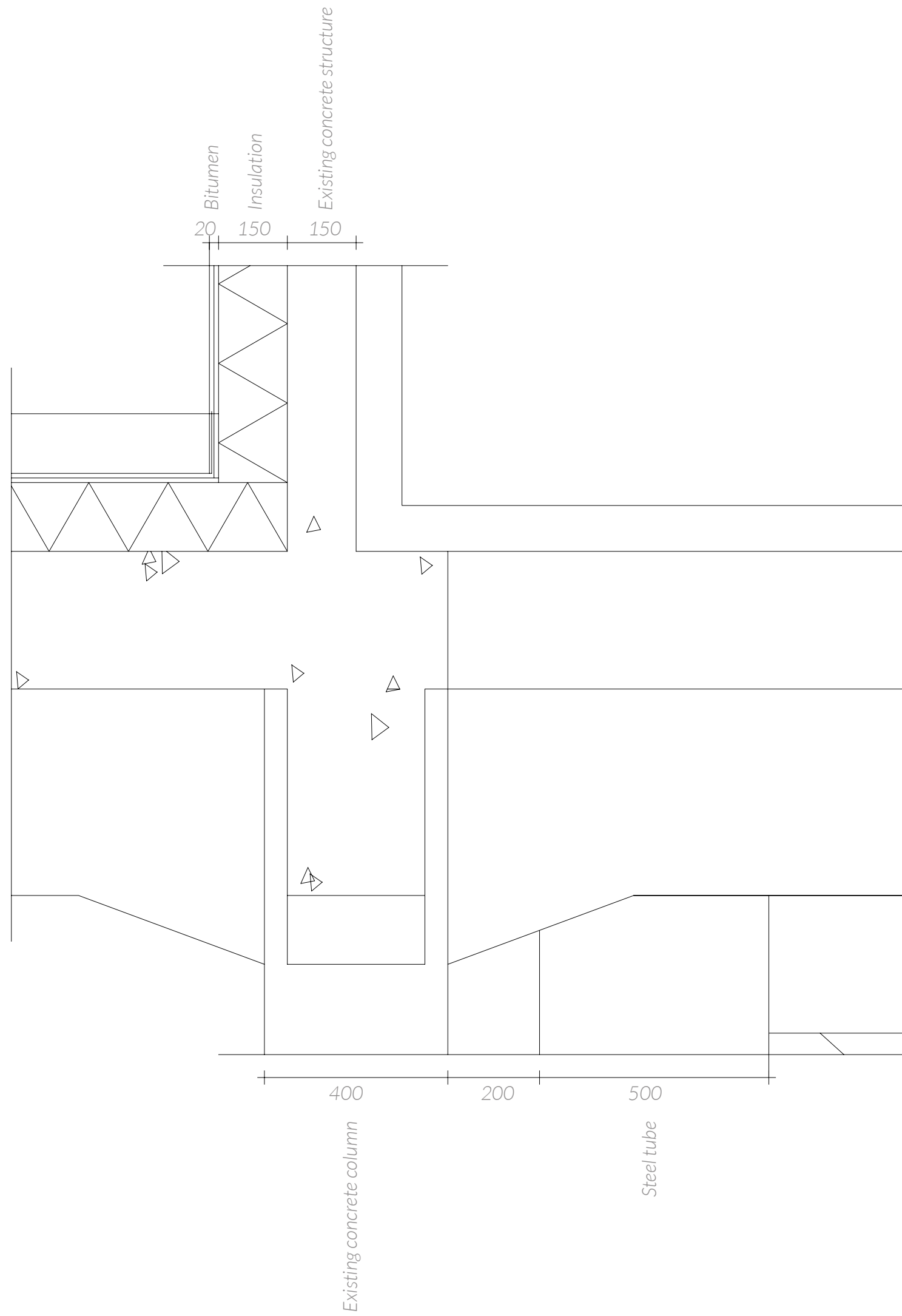
Timber frame with insulation

Plasterboard with paint finish

HE 200 A steel column

Dry floor system
Steel floor element
HE 160 A steel beam

Detail 5 theatre
1:10



Detail 6 theatre
 1:10