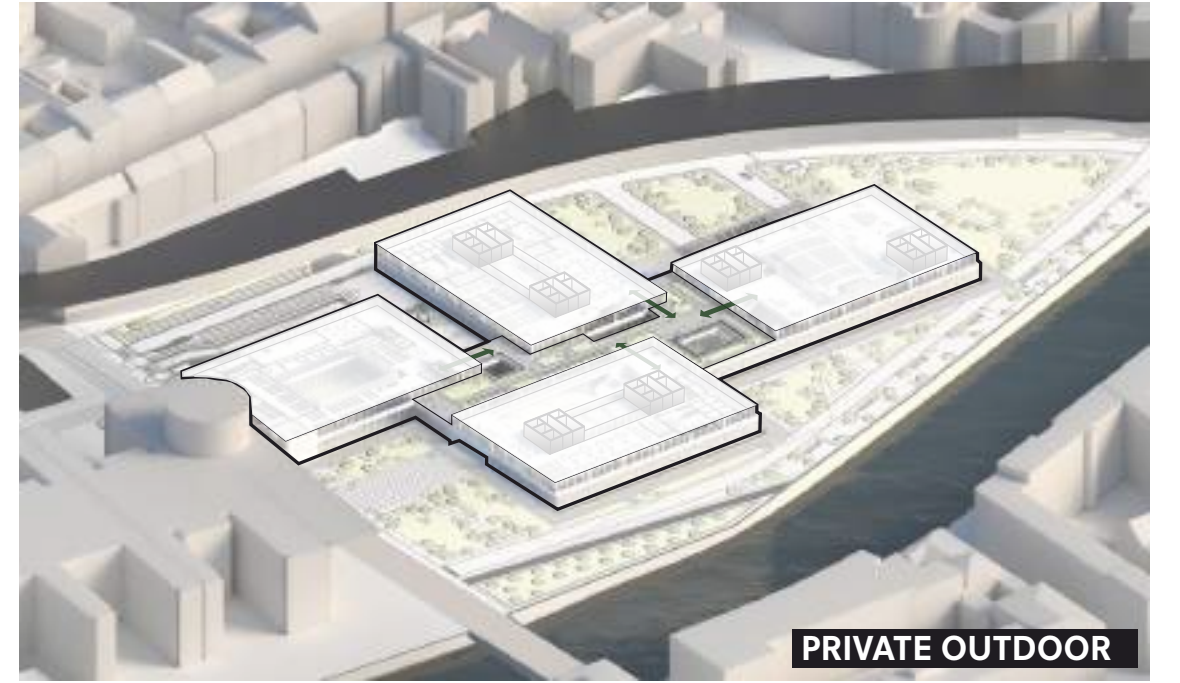
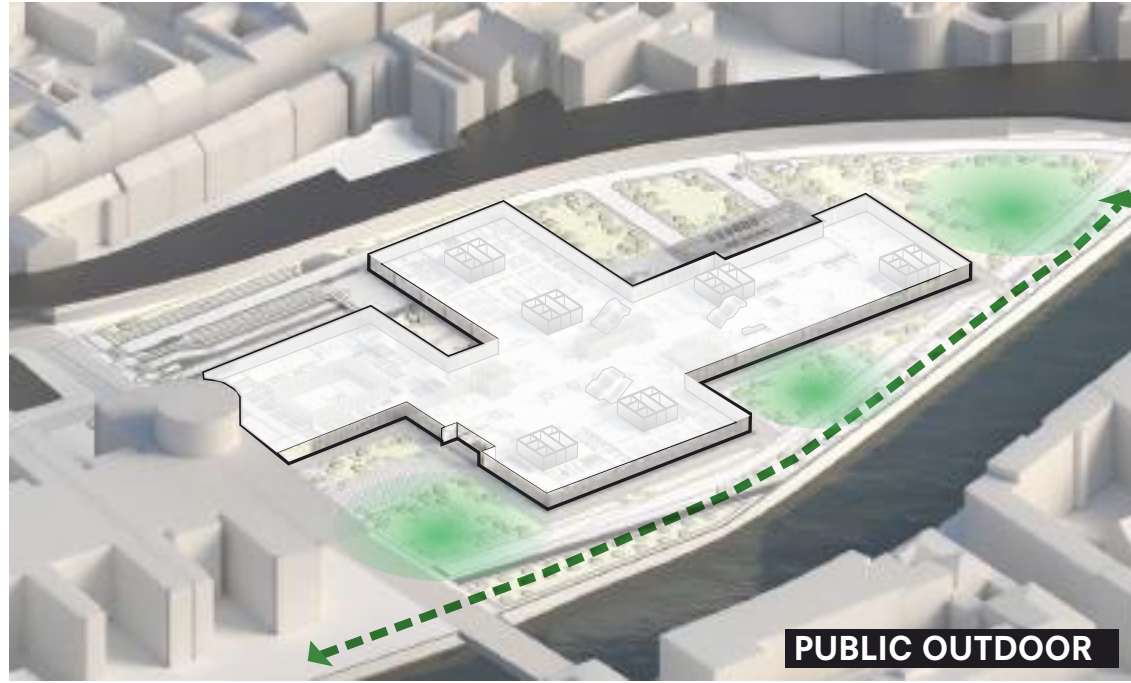
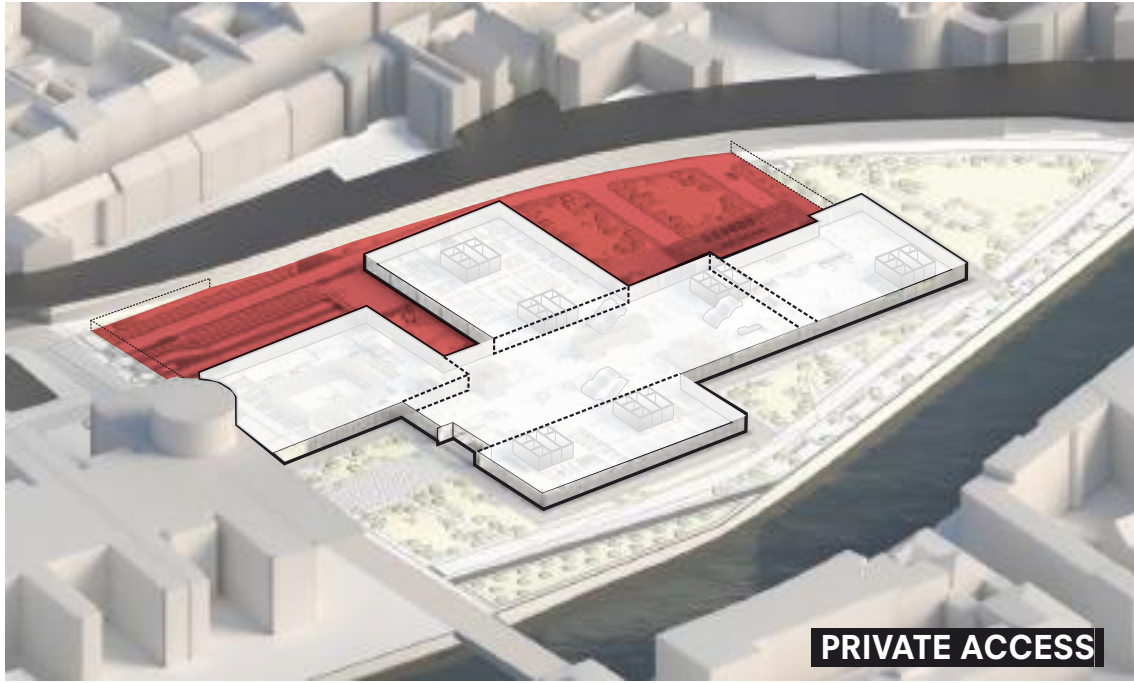
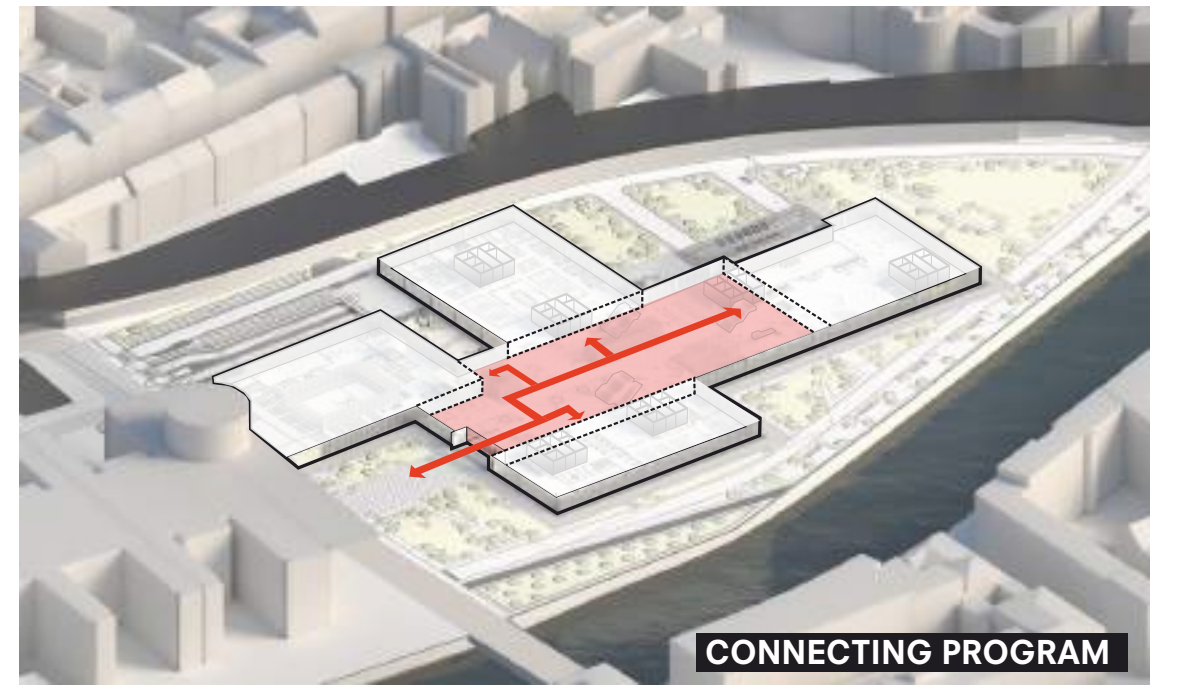
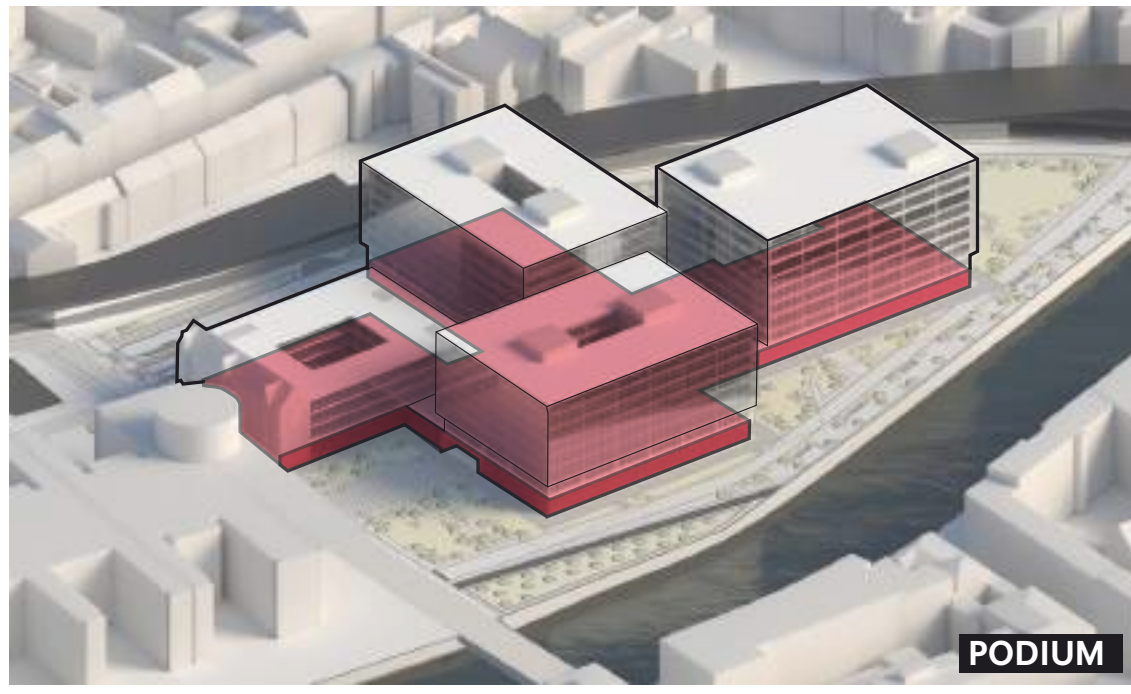
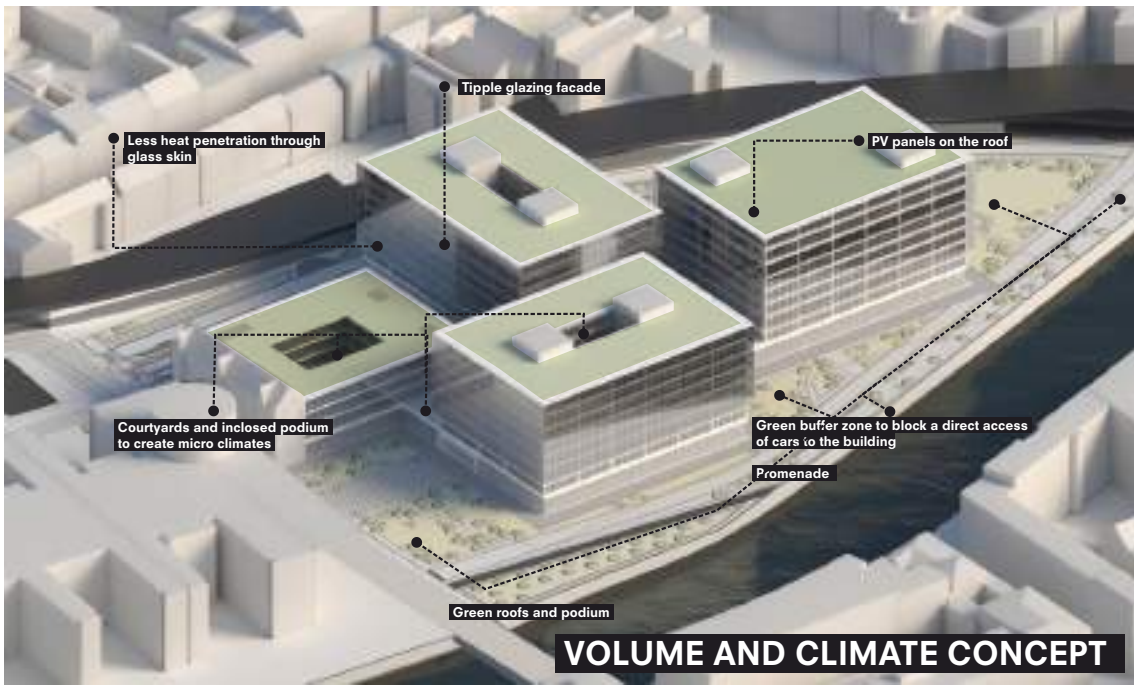


FEDERAL FOREIGN OFFICE, BERLIN

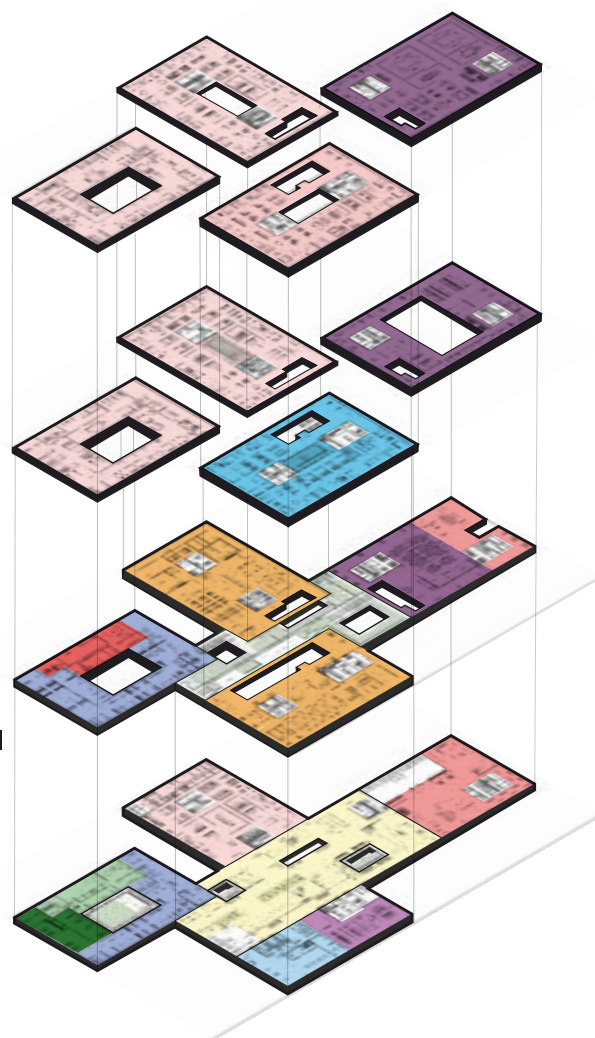
STEPAN SERDIUKOV // 4541618
Group 00 - Bodies, Building, Berlin

COMPLEX PROJECTS GRADUATION STUDIO - P5.0 19/01/2023

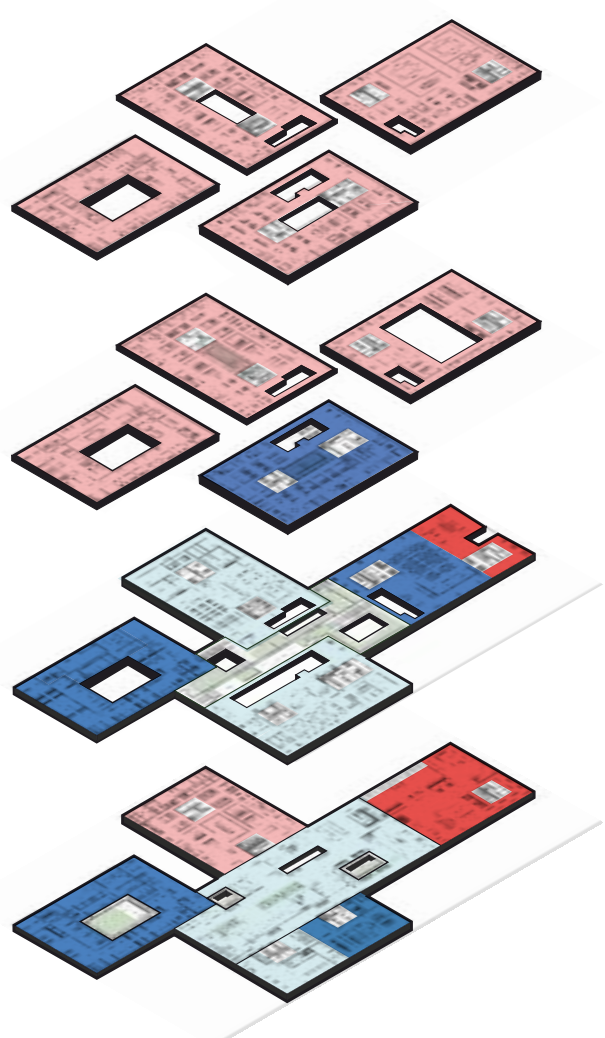


CONCEPT

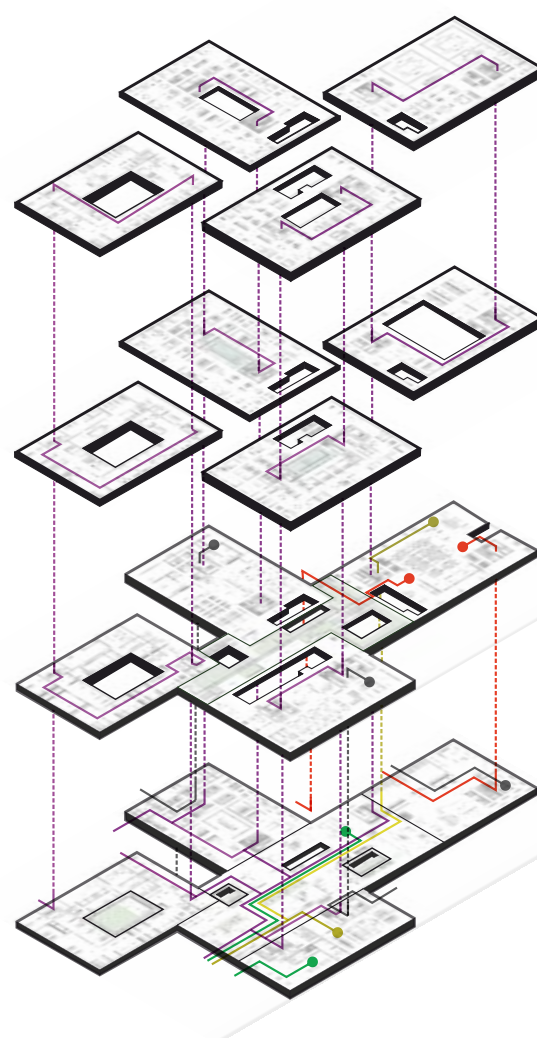
PROGRAM



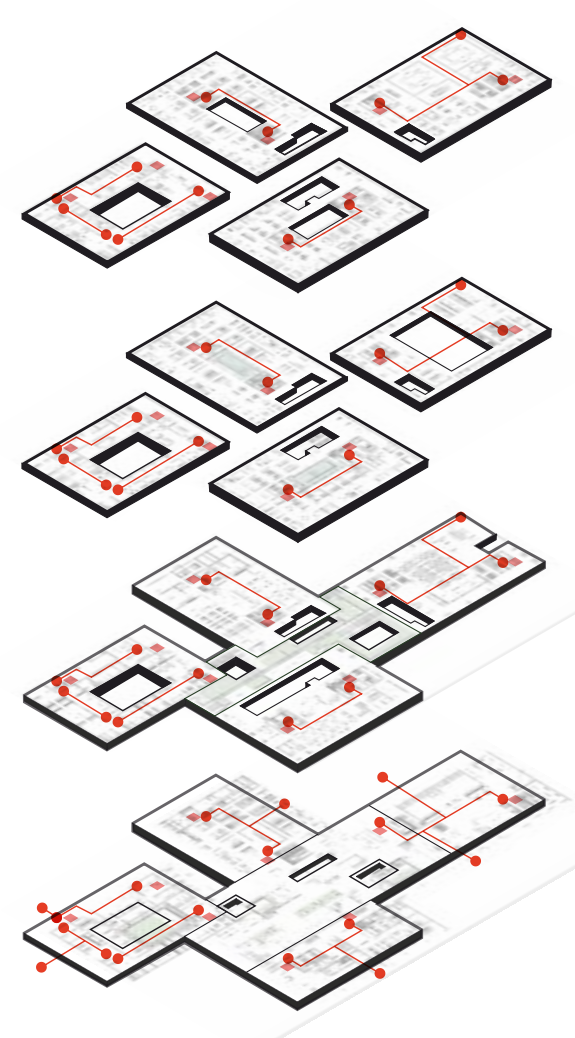
SECURITY AND ACCESSIBILITY ZONES



CIRCULATION DIVISION



FIRE COMPARTMENT AND ESCAPE ROUTE



SITE VIEW



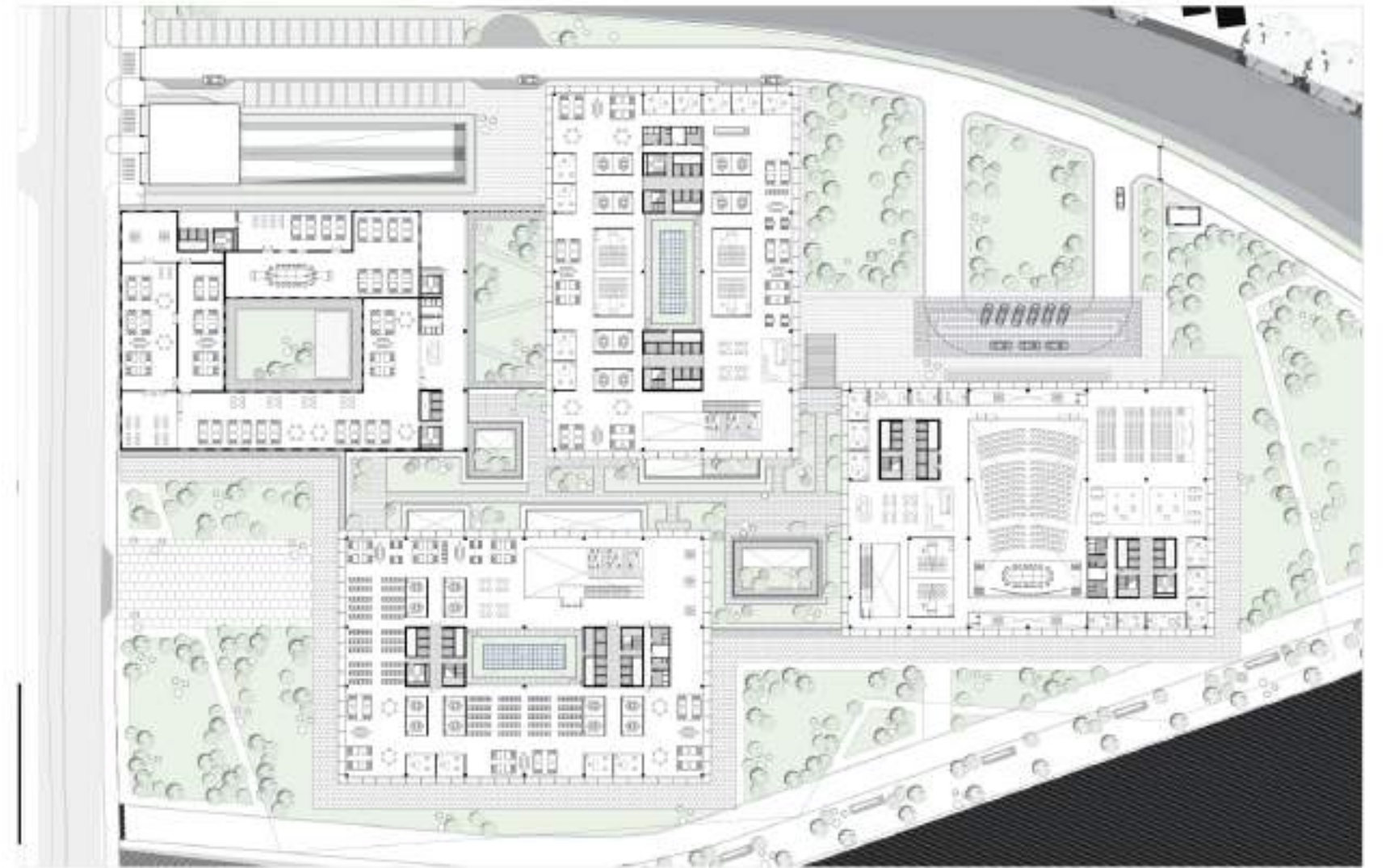
FEDERAL FOREIGN OFFICE, BERLIN

STEPAN SERDIUKOV // 4541618
Group 00 - Bodies, Building, Berlin

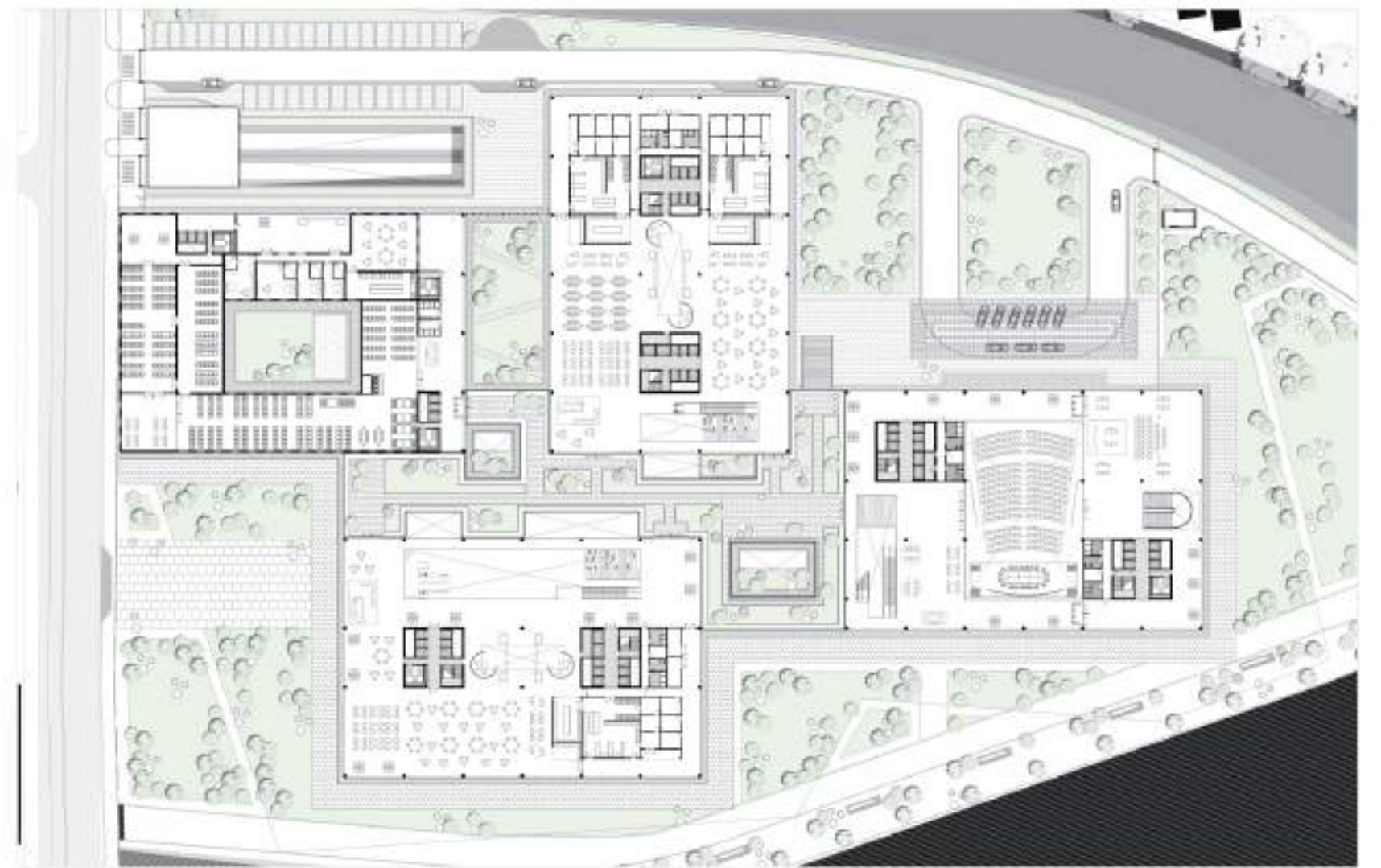
COMPLEX PROJECTS GRADUATION STUDIO - P5.0 19/01/2023



PODIUM TERRACE



SECOND FLOOR



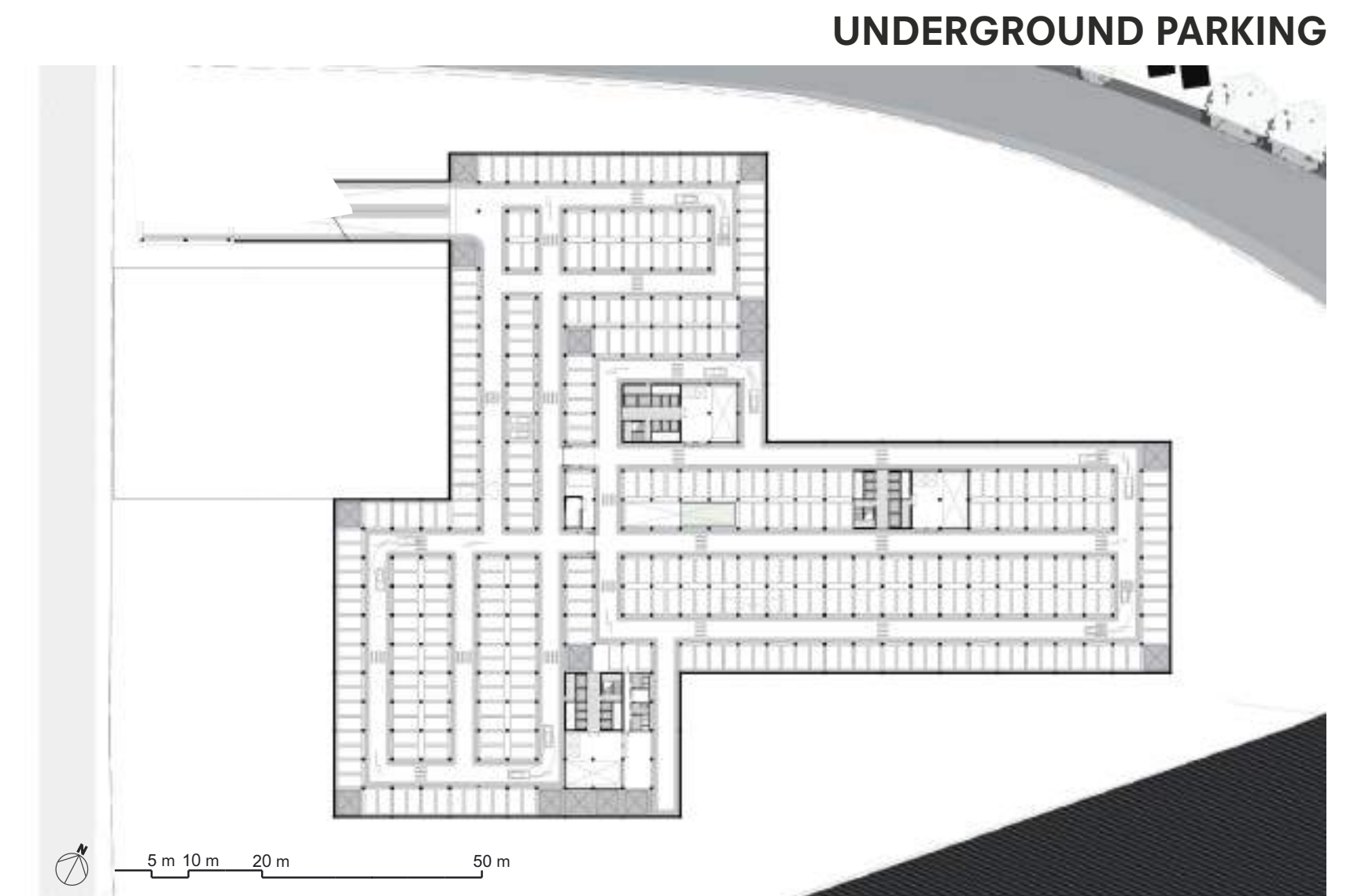
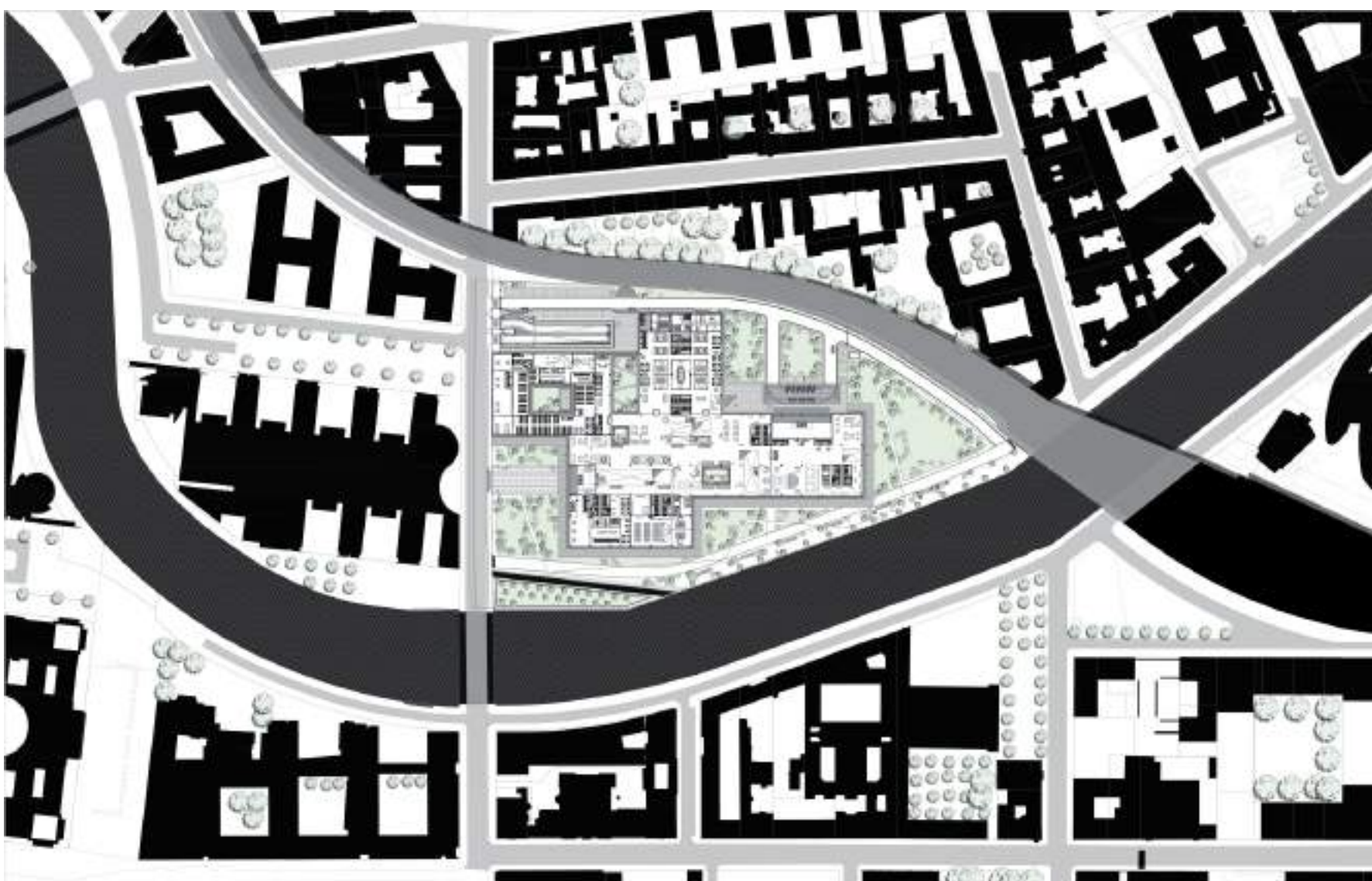
FIRST FLOOR



GROUND FLOOR

MASTER PLAN 1 : 2000

20 m 40 m 80 m 200 m



UNDERGROUND PARKING

FEDERAL FOREIGN OFFICE, BERLIN

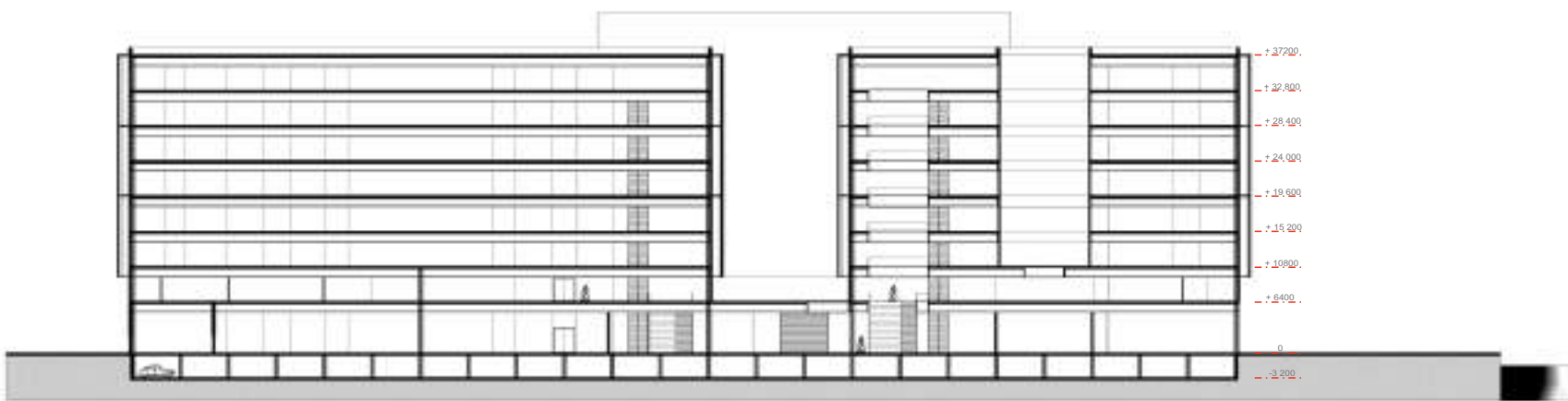
STEPAN SERDIUKOV // 4541618
Group 00 - Bodies, Building, Berlin

COMPLEX PROJECTS GRADUATION STUDIO - P5.0 19/01/2023

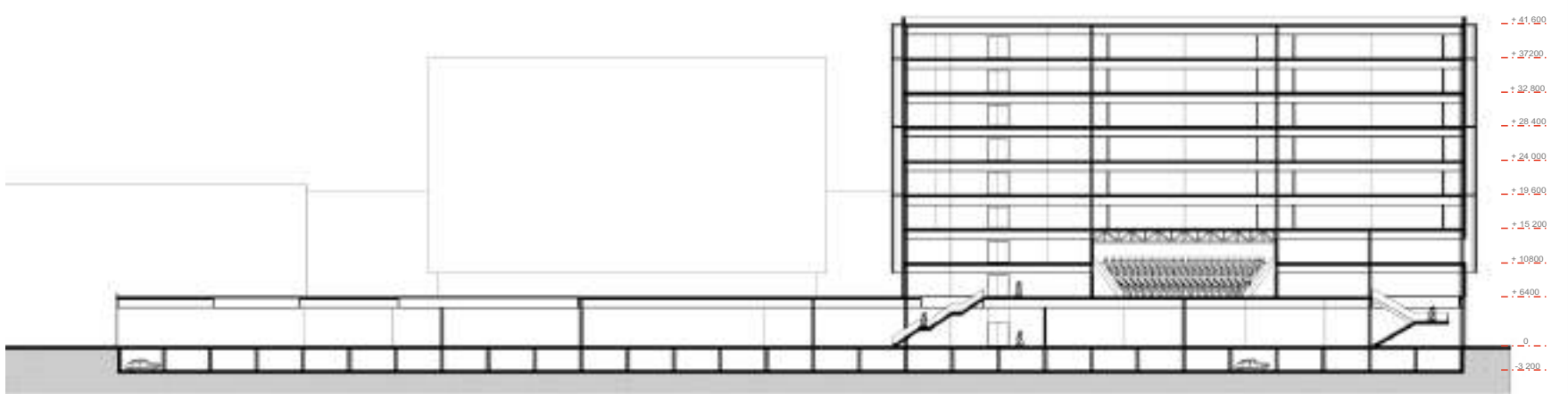


MAIN HALL

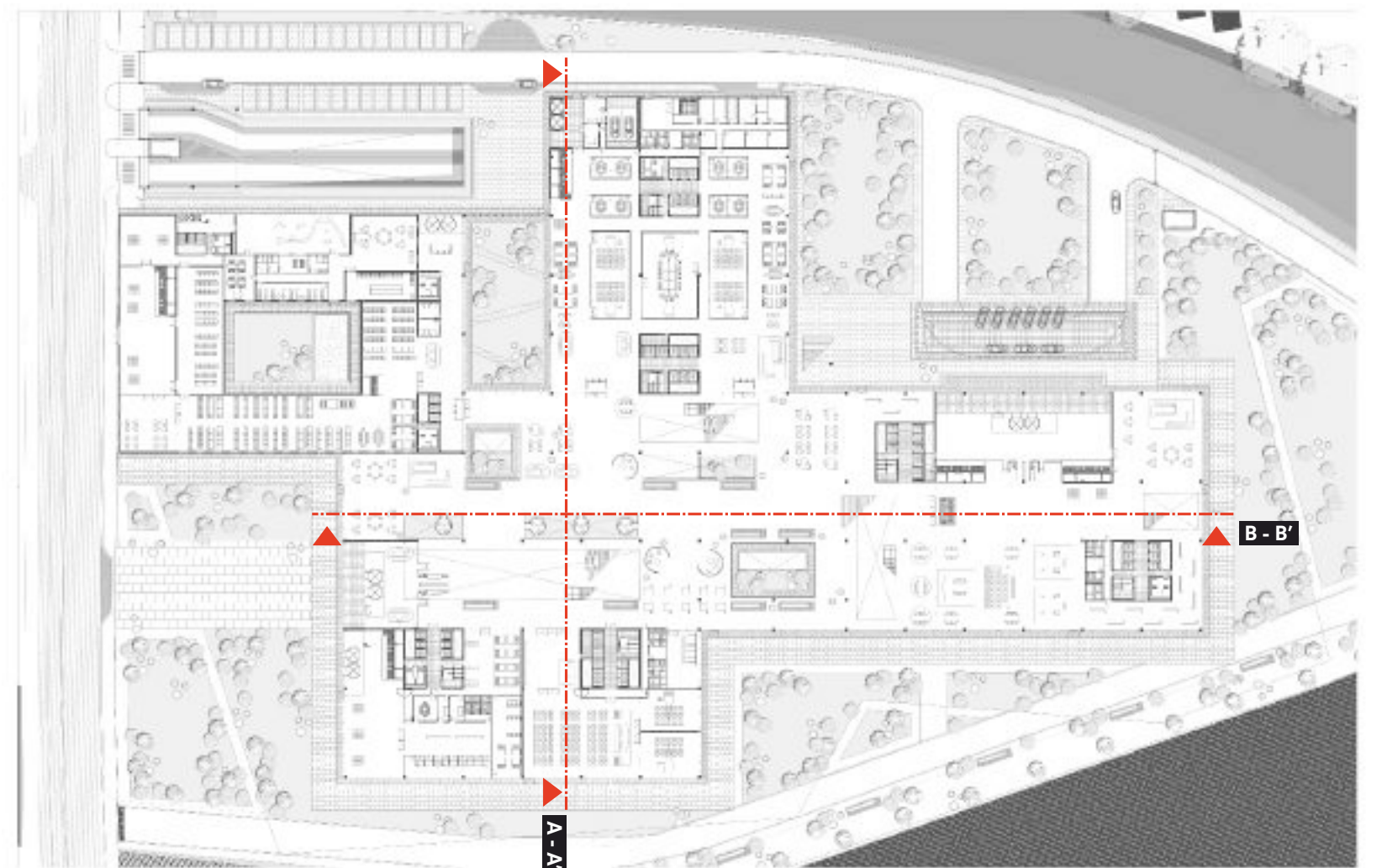
SECTION A - A'



SECTION B - B'



SECTIONS



5 m 10 m 20 m 50 m

OFFICES



INTERNATIONAL CONFERENCE

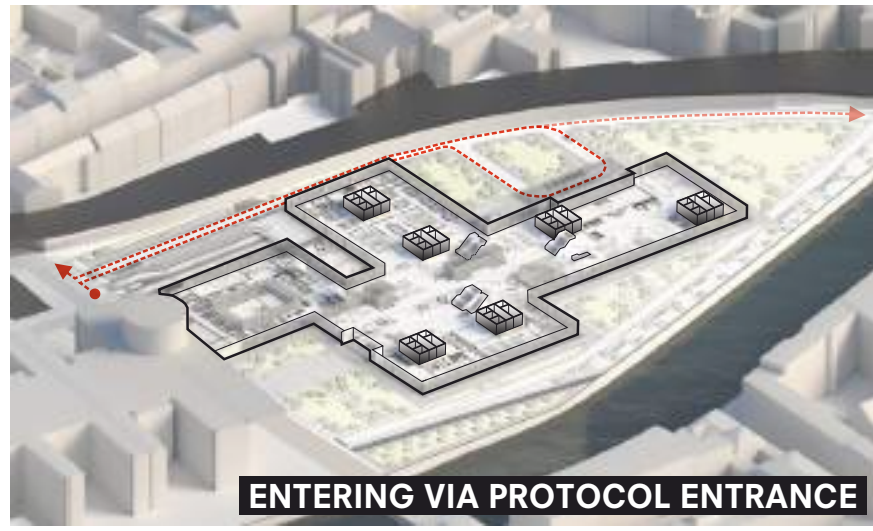


FEDERAL FOREIGN OFFICE, BERLIN

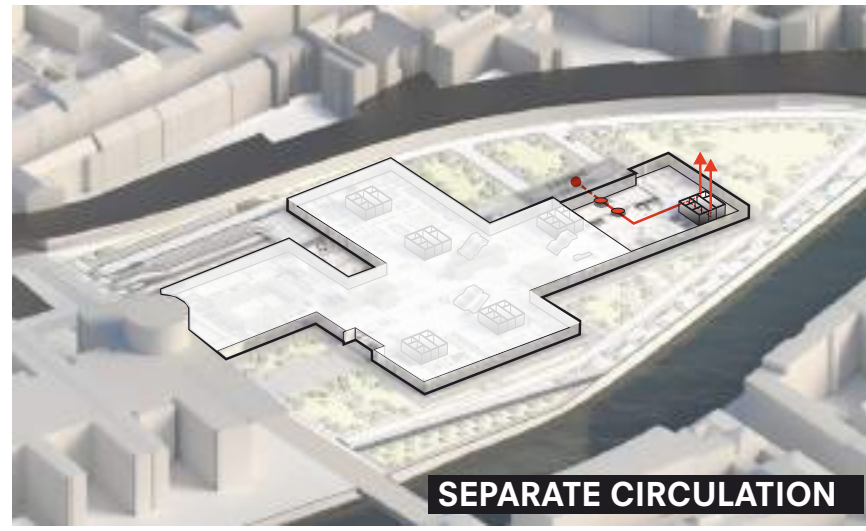
STEPAN SERDIUKOV // 4541618
Group 00 - Bodies, Building, Berlin

COMPLEX PROJECTS GRADUATION STUDIO - P5.0 19/01/2023

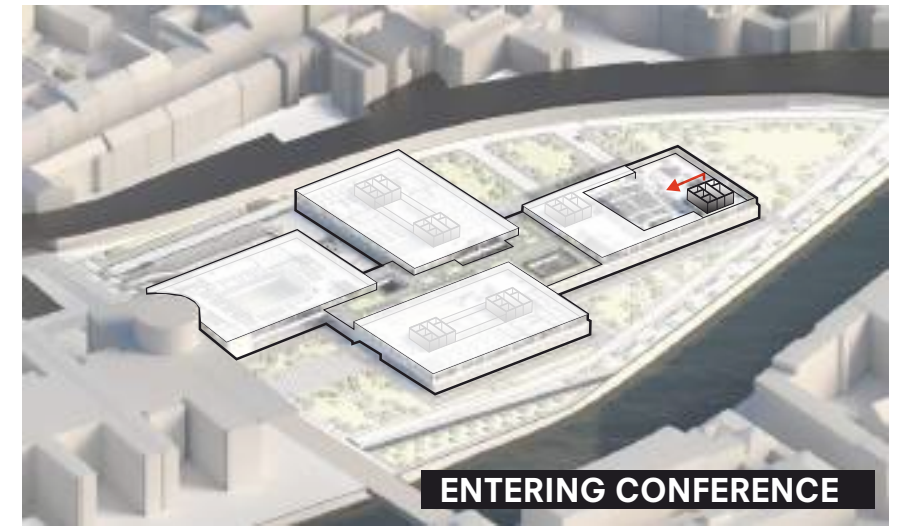
USER SCENARIOS



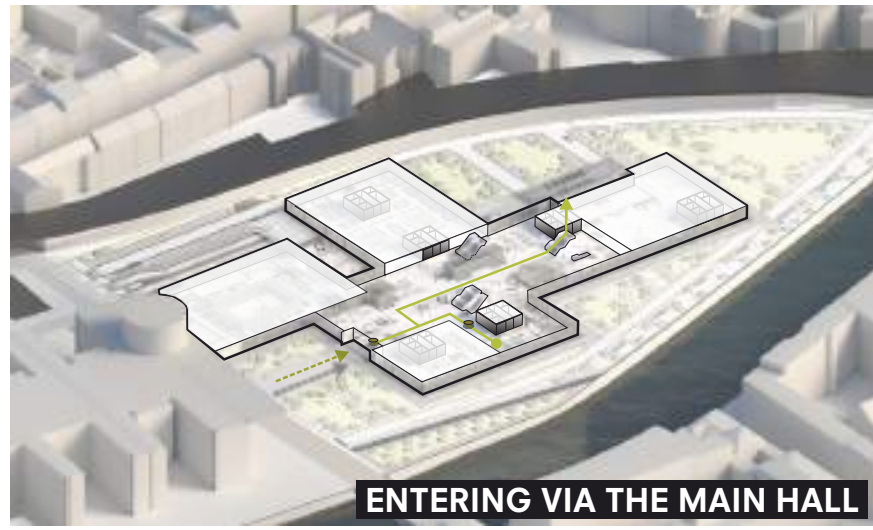
PROTOCOL ROUTE



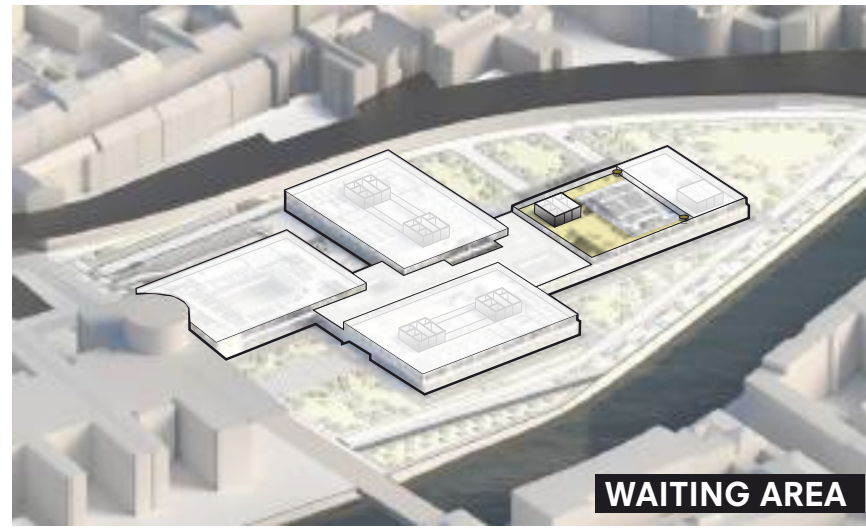
SEPARATE CIRCULATION



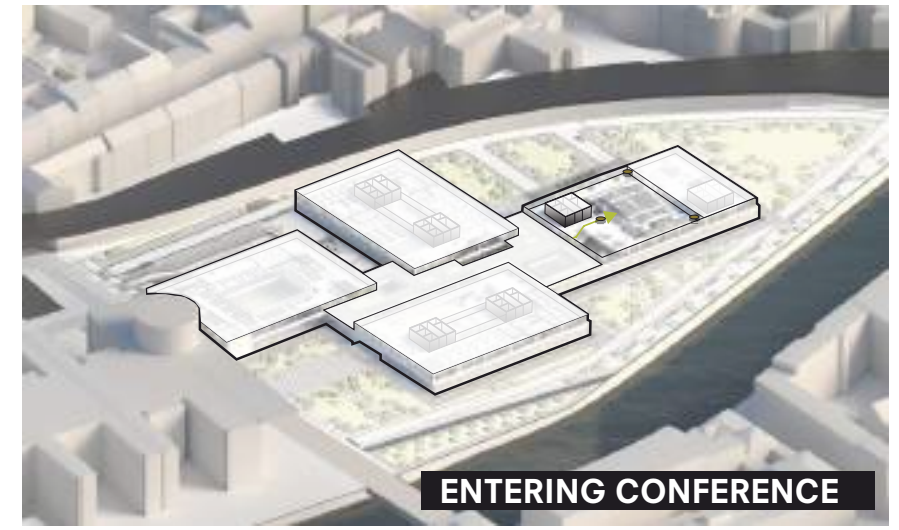
ENTERING CONFERENCE



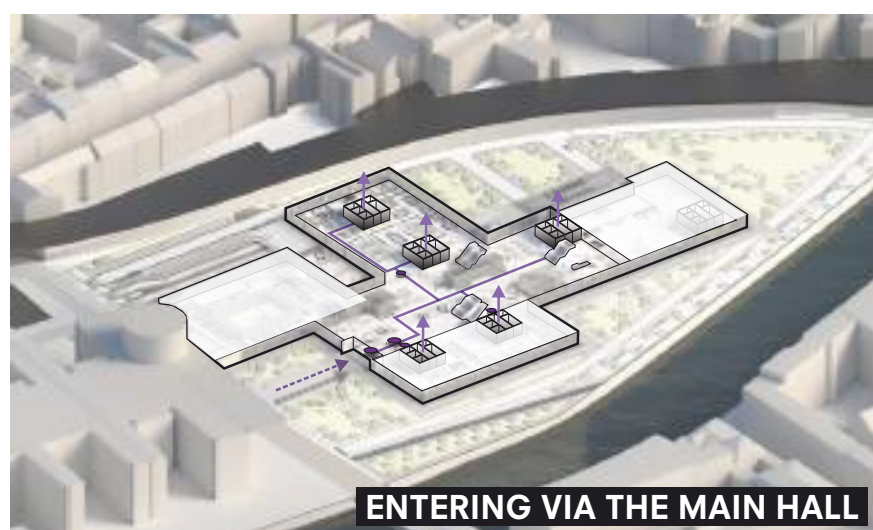
MEDIA ROUTE



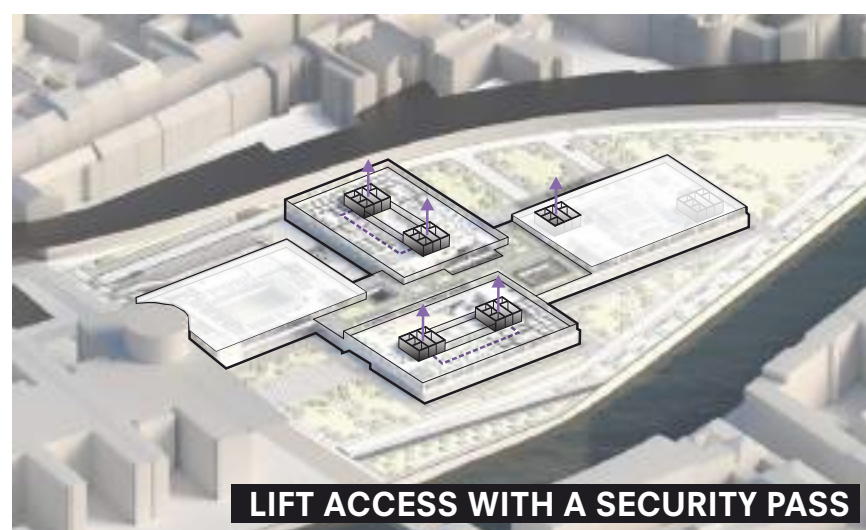
WAITING AREA



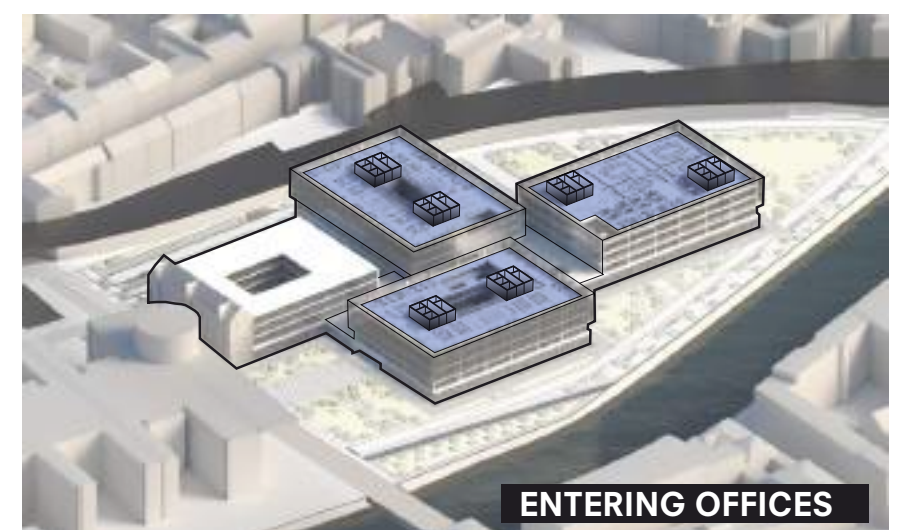
ENTERING CONFERENCE



ACCREDITED PERSON ROUTE



LIFT ACCESS WITH A SECURITY PASS



ENTERING OFFICES

MAIN ENTRANCE

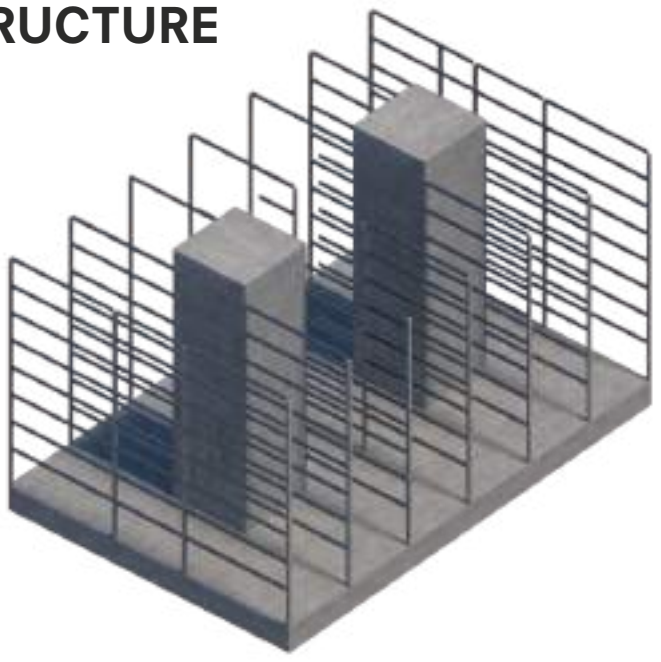


FEDERAL FOREIGN OFFICE, BERLIN

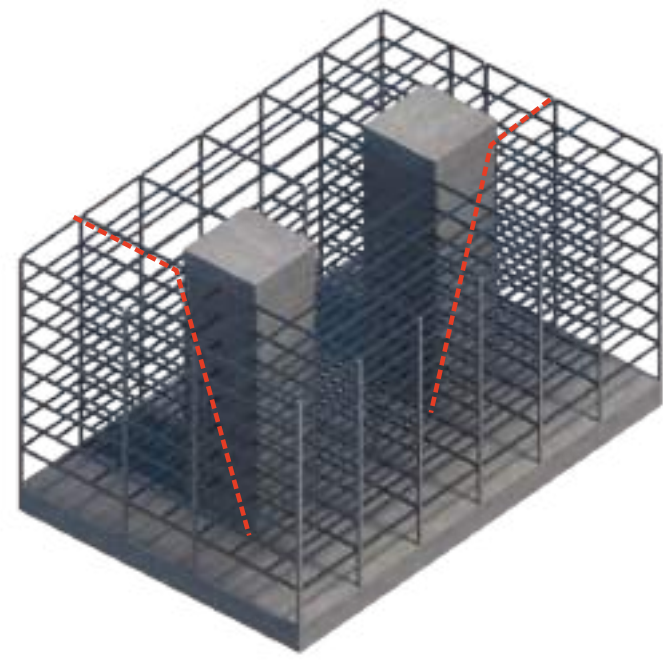
STEPAN SERDIUKOV // 4541618
Group 00 - Bodies, Building, Berlin

COMPLEX PROJECTS GRADUATION STUDIO - P5.0 19/01/2023

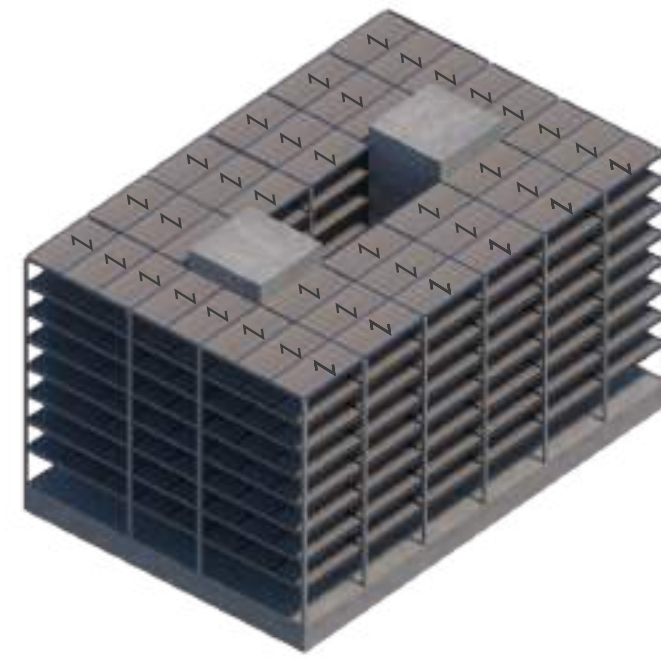
STRUCTURE



CFT COLUMNS



STEEL BEAM STRUCTURE

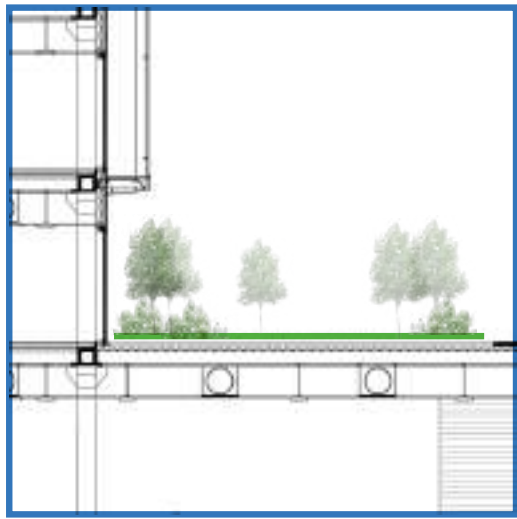


CHANNEL PLATE FLOOR

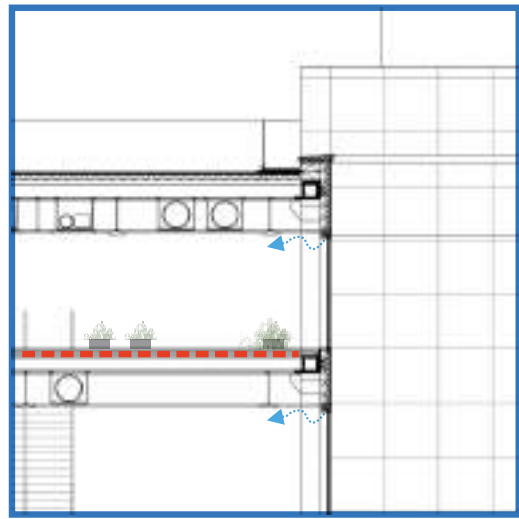


DOUBLE FACADE

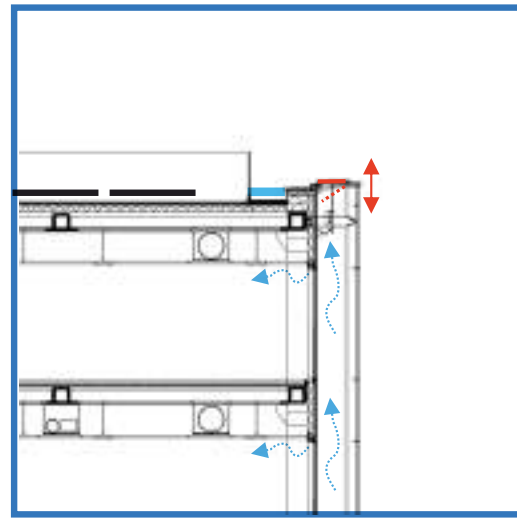
CLIMATE



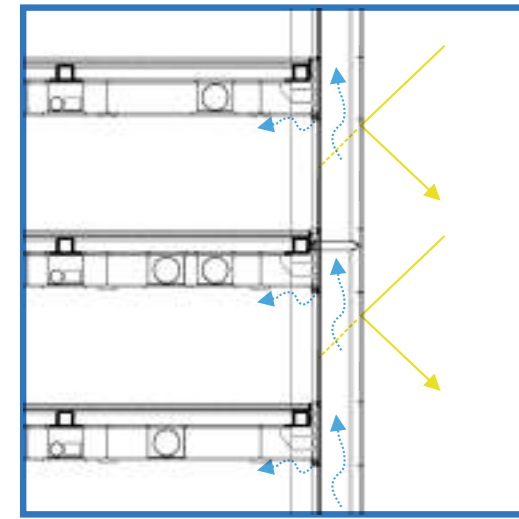
Green podium with a water collection
Natural light via atriums and courts



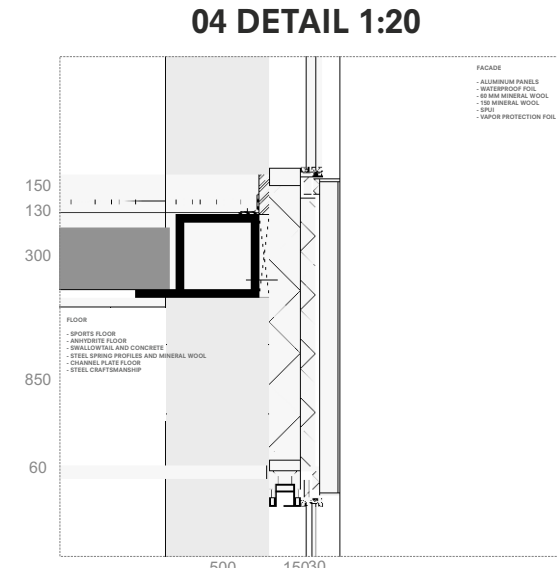
Triple solar glazing
Inner vegetation
Hanged sealing for heating and cooling
Acoustic absorption



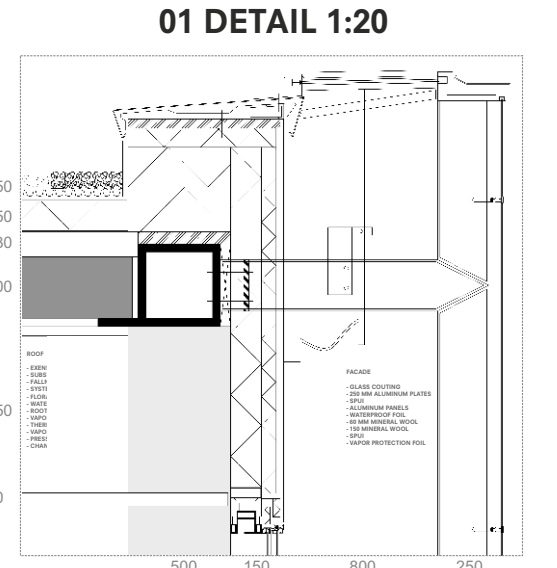
PV panels above roof
Rainwater collection on the roof
Ventilated facade



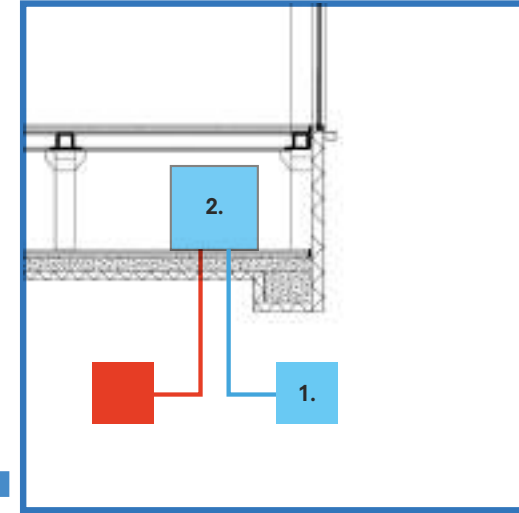
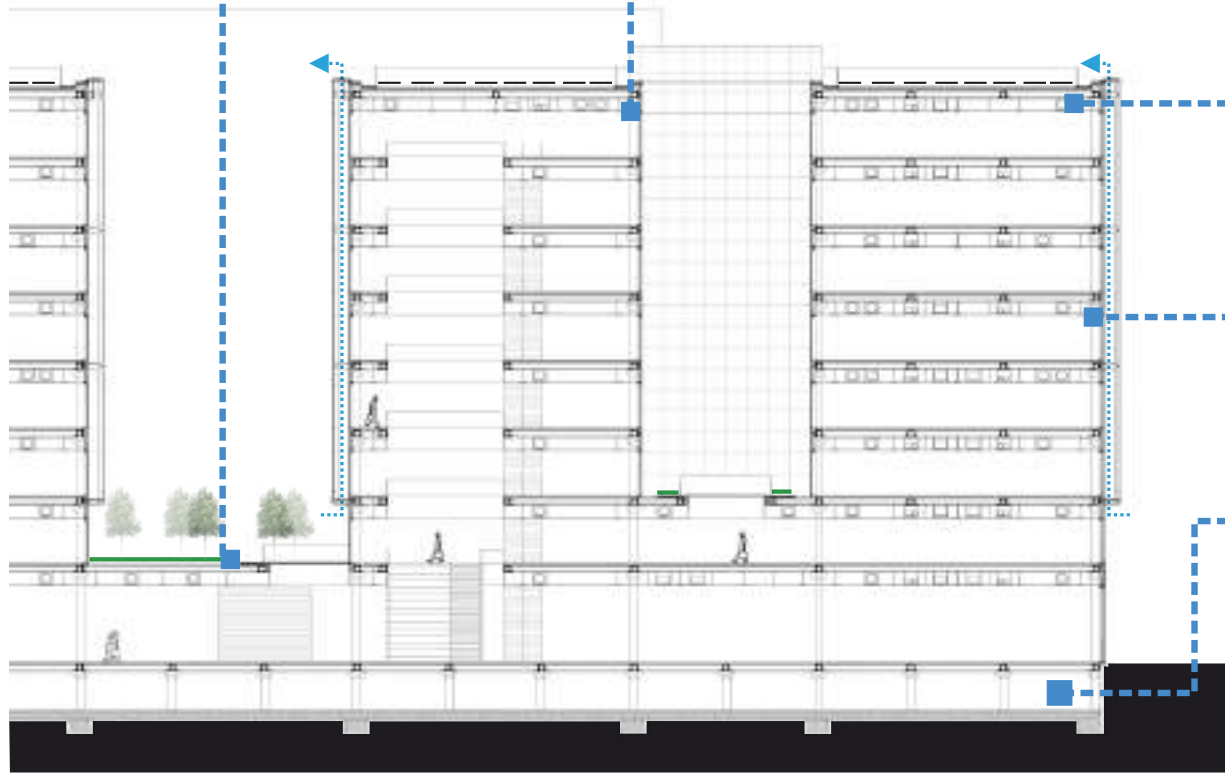
Triple solar glazing
Ventilated facade



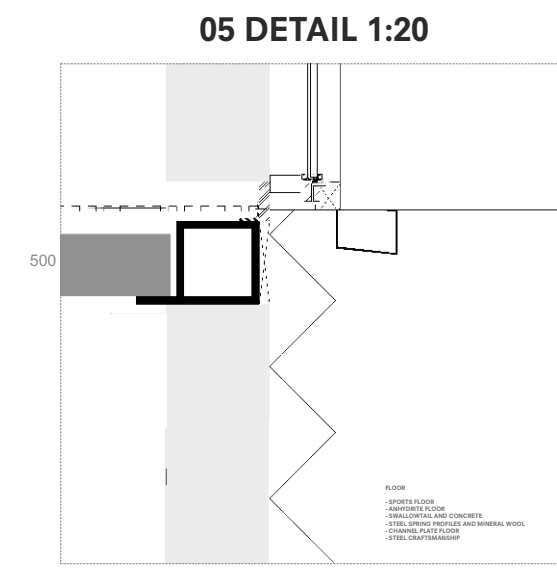
04 DETAIL 1:20



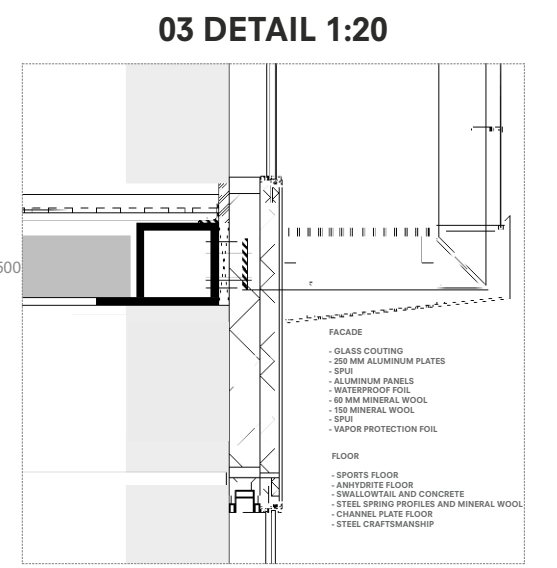
01 DETAIL 1:20



1. Geothermal energy storage
2. Heat pumps for heating and cooling



05 DETAIL 1:20



03 DETAIL 1:20

SECTION 1:20



FIRE COMPARTMENT AND ESCAPE ROUTE

