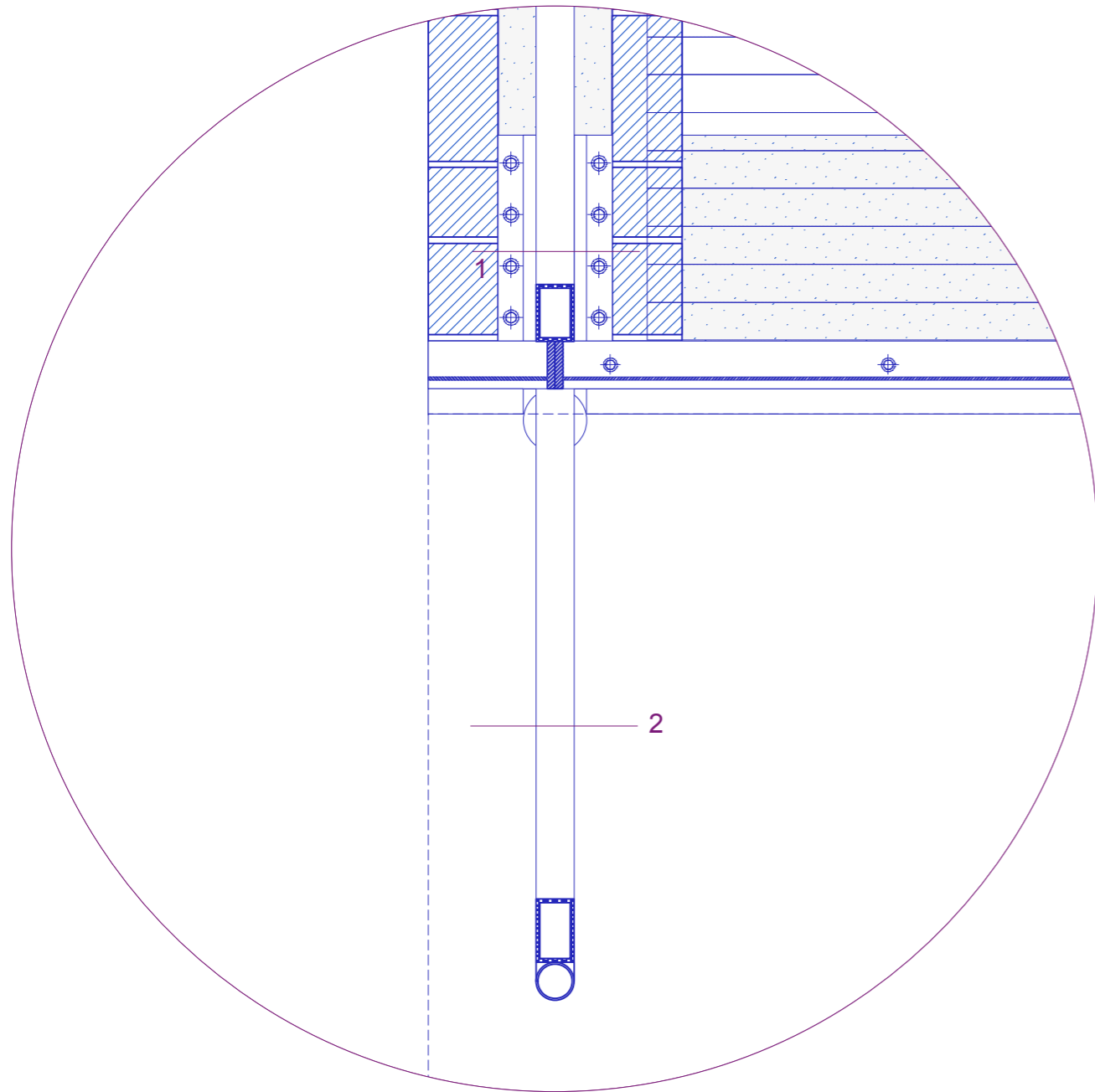
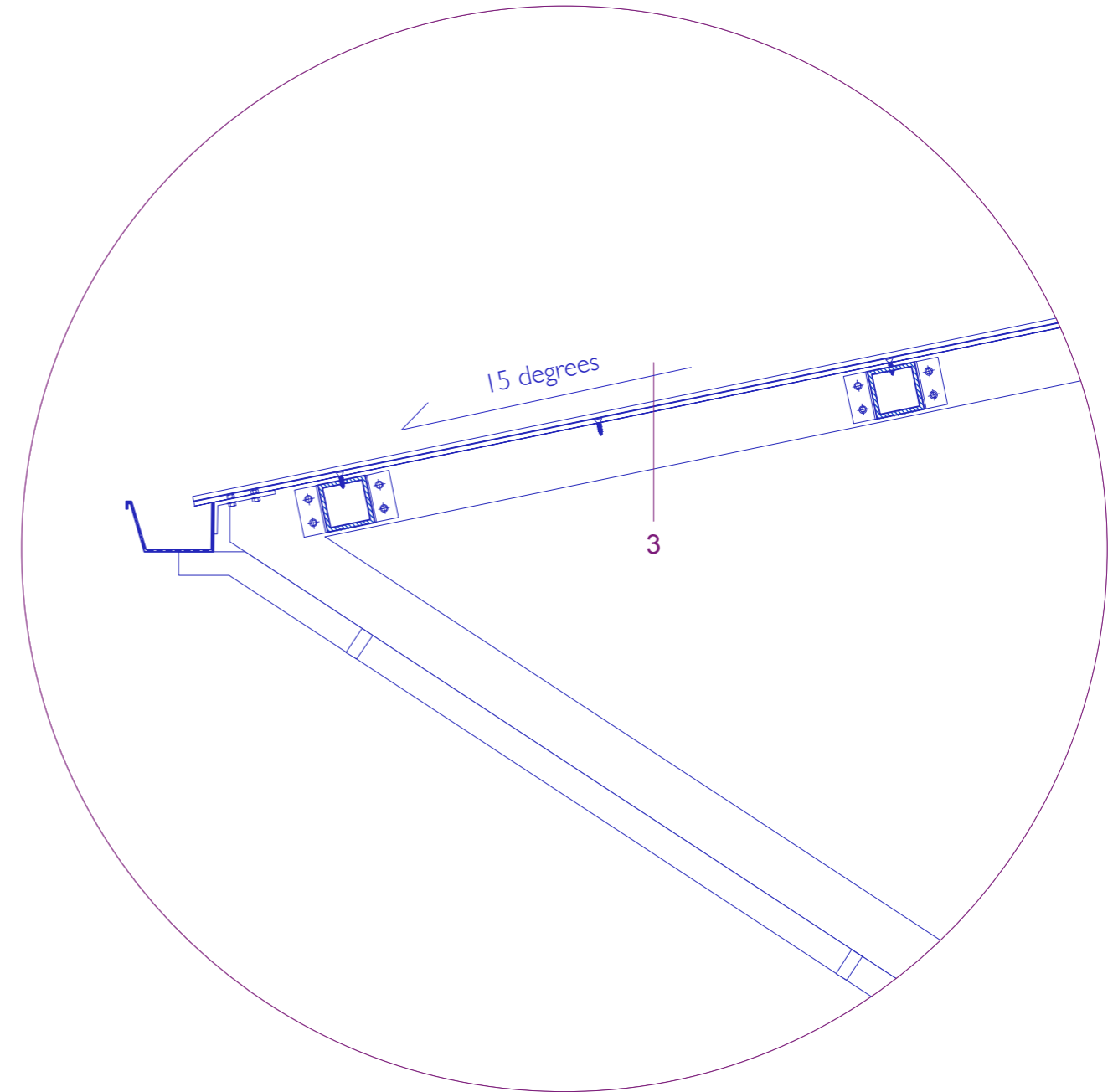


F.1



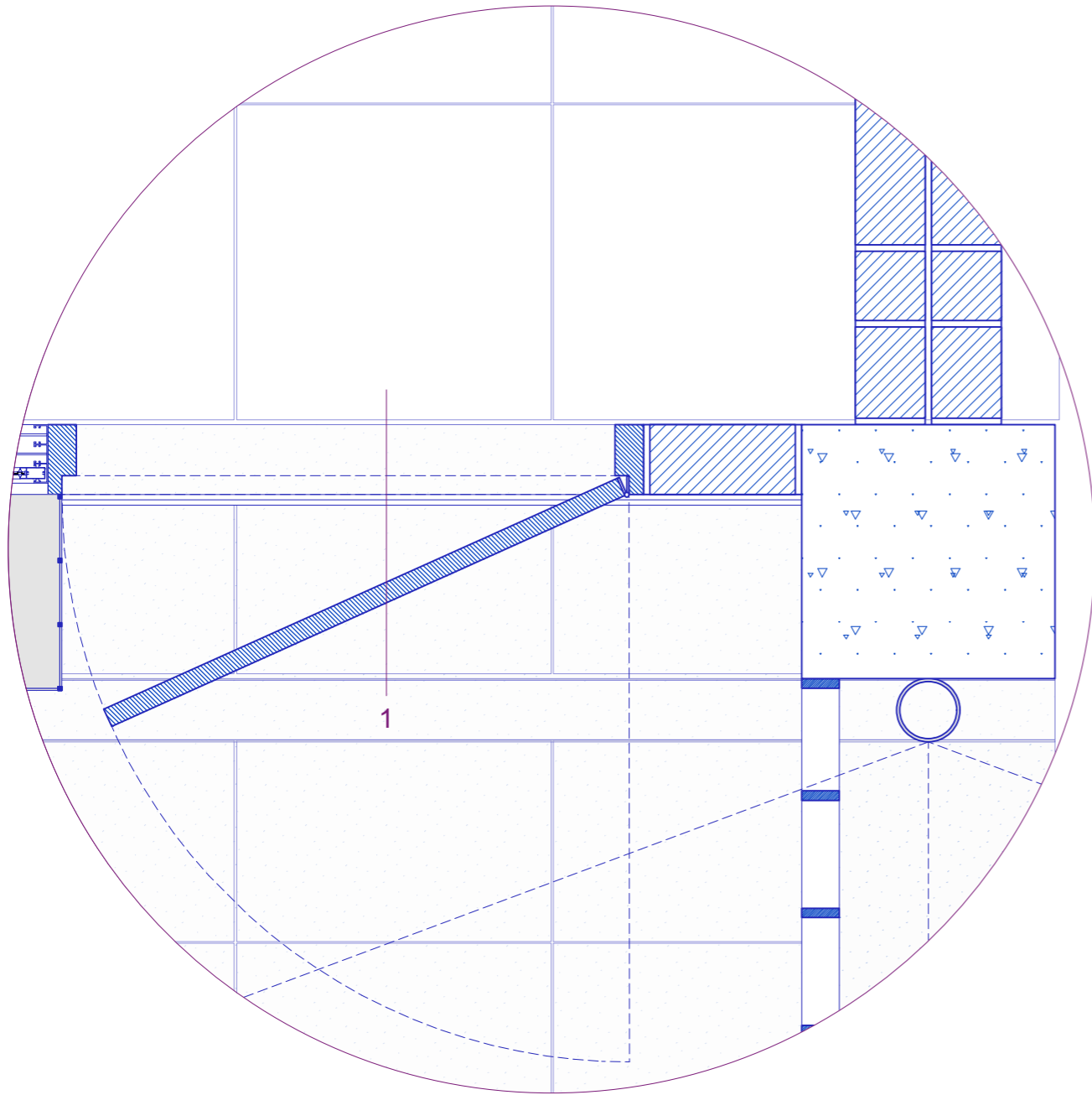
F.2



- 1
 - Bamboo slats, secondary roofing
 - Incapsulated with cement layer to brick partition wall
 - Brick partition wall 110x230x76mm
 - Floor mounting foot
 - Bolted on concrete beam-column joint
 - Bolted on steel truss
 - Brick partition wall 110x230x76mm
- 2
 - HS Steel truss 90x60mm T:6mm
 - (Rafter)
 - Anti-corrosive primers
 - Paint coating
 - Waterdrainage
 - Connected on truss via metal cable ties

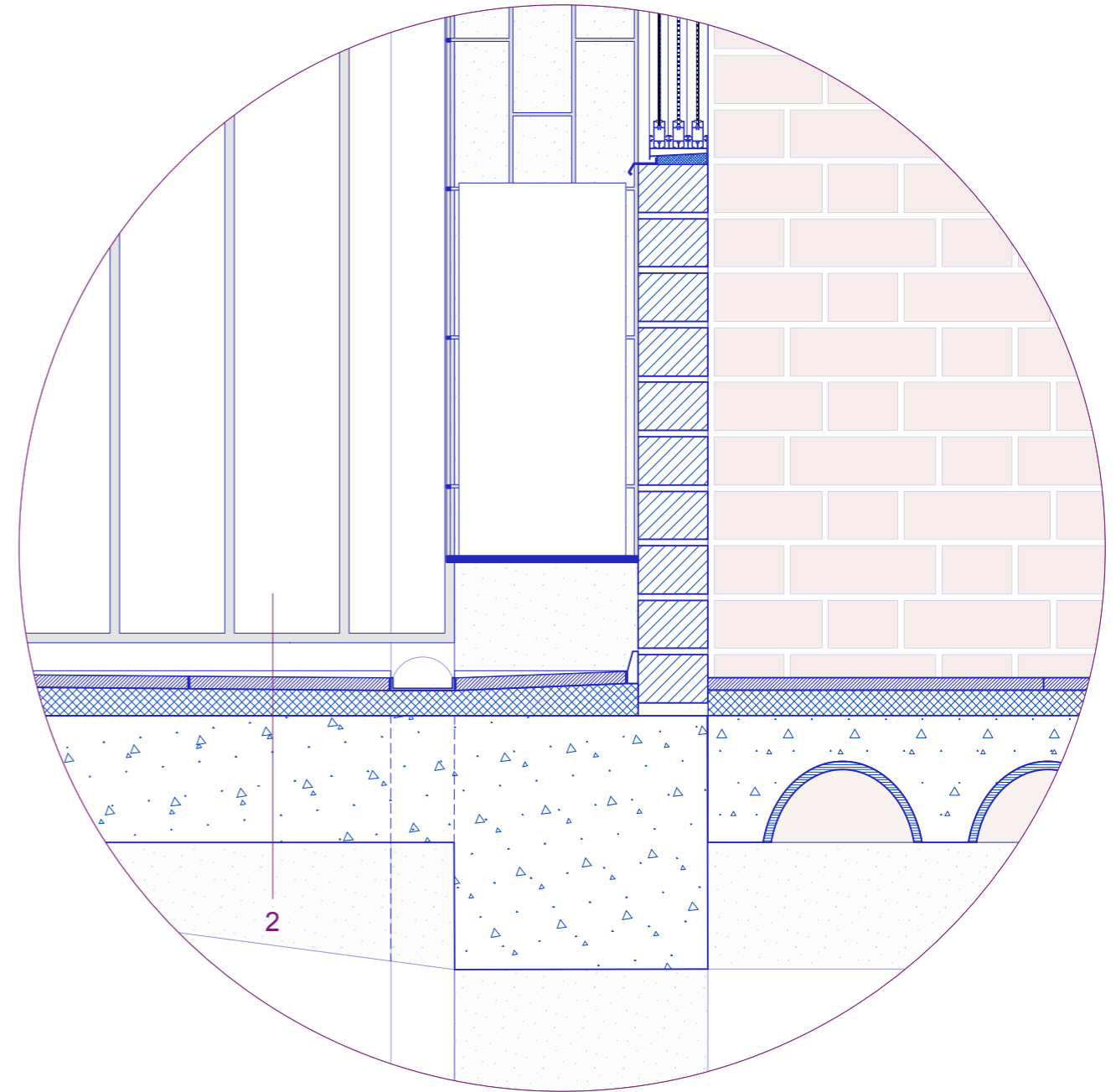
- 3
 - Corrugated galvanized iron roofing (with overlap)
 - Bolted galvanized/zinc screws
 - Polycarbonated washers (waterproofing)
 - HS Steel truss 90x60mm T:6mm
 - (Rafter)
 - Anti-corrosive primers
 - Paint coating
 - HS steel (secondary) horizontal construction 75mmx75mm T:6mm
 - (Steel purling)
 - Anti-corrosive primers
 - Paint coating

E.1



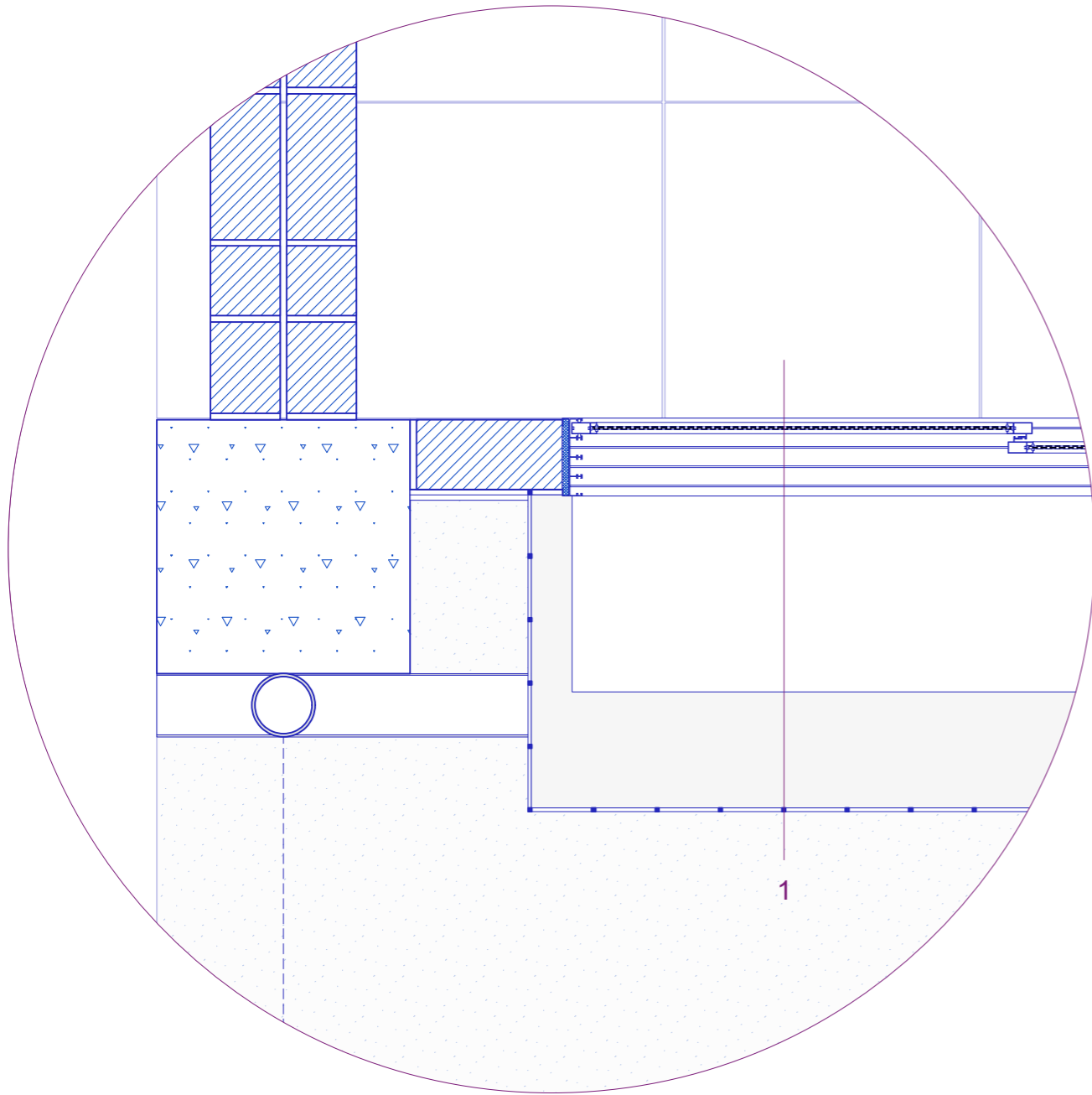
- I
- Aluminium doorframe 2300x920mm T:45mm
 - Anodized coating
 - Paint coating
 - Aluminum door 2230x 850mm T: 30mm
 - Anodized coating
 - Paint coating

E.2



- 2
- HS steel, welded Rails 60x20mm
 - Vitrified tiles 500x500x20mm (slope, 1%)
 - Cement layer 40mm
 - (Betumen waterproofing)
 - Reinforced concrete bracket

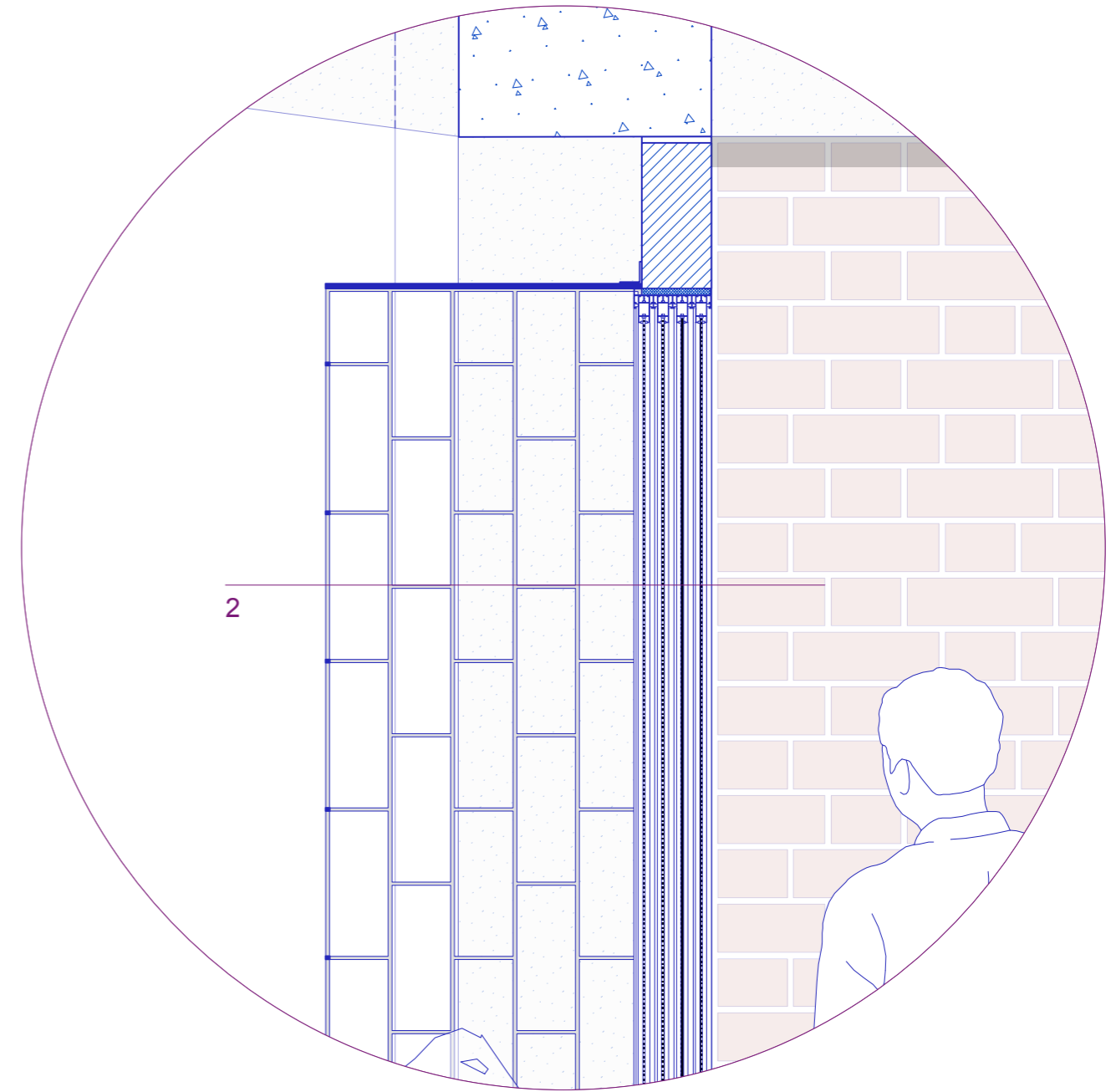
D.1



1

- Aluminium sliding windowframe 120mm
- 4 tracks, 30mm soundproof
- Anodized coating
- Paint coating
- Single glazing, 6mm
- Airconditioning
- HS steel window cage T:0.5mm

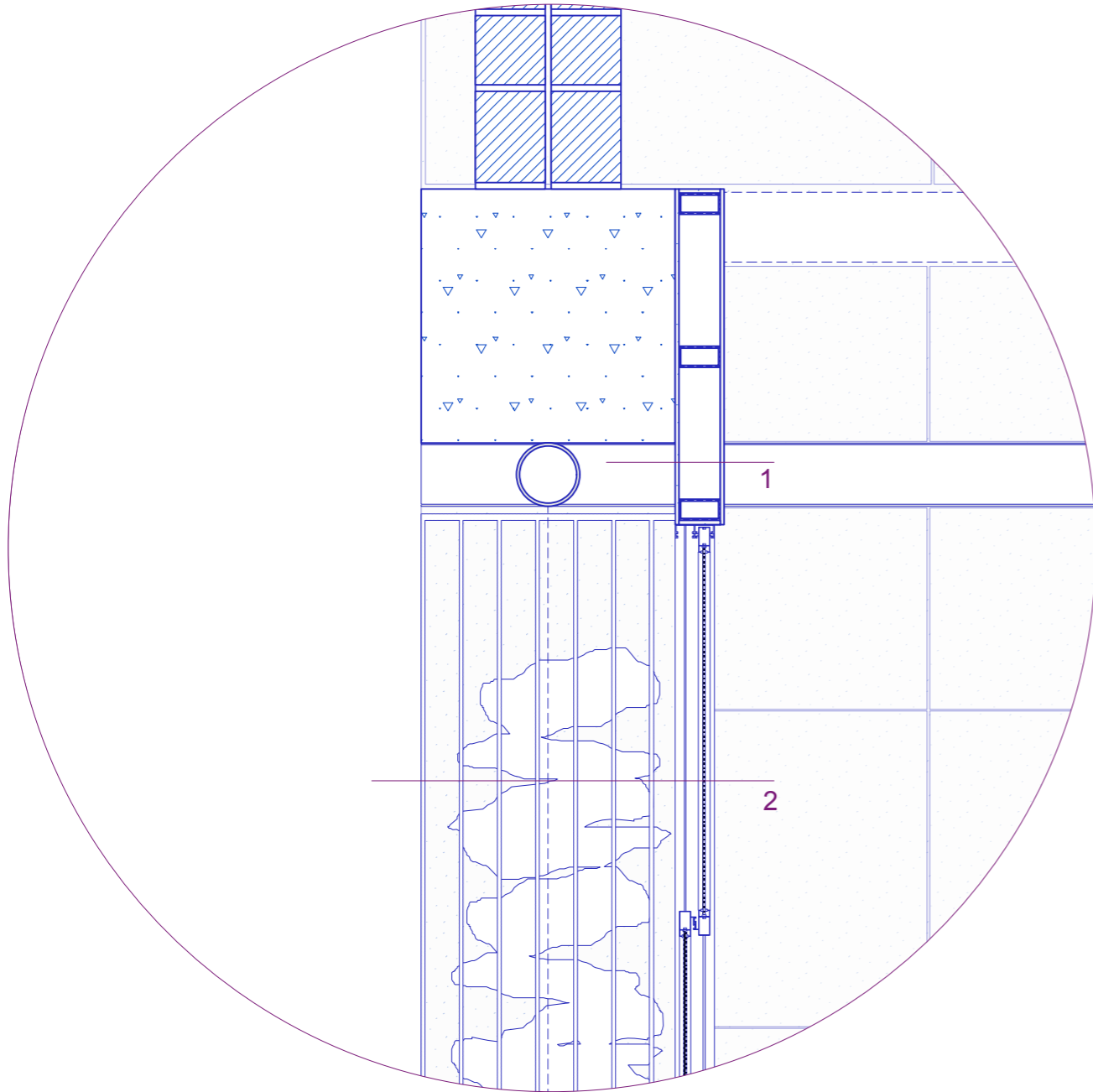
D.2



2

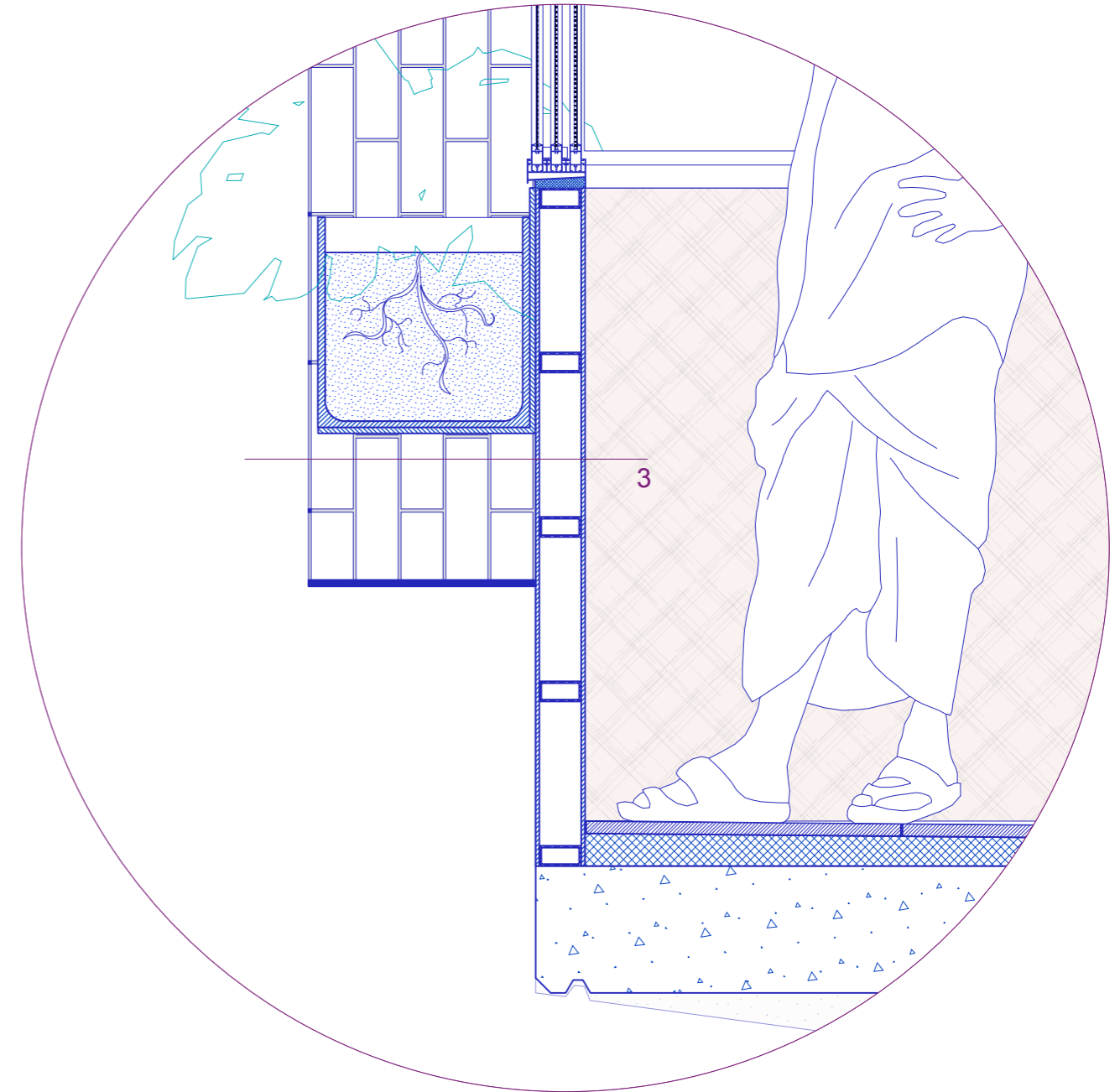
- Aluminium sliding windowframe
- 4 tracks, 30mm soundproof
- Anodized coating
- Paint coating
- Single glazing, 6mm
- HS steel window cage T:0.5mm
- Anti-corrosive primers
- Paint coating

C.1



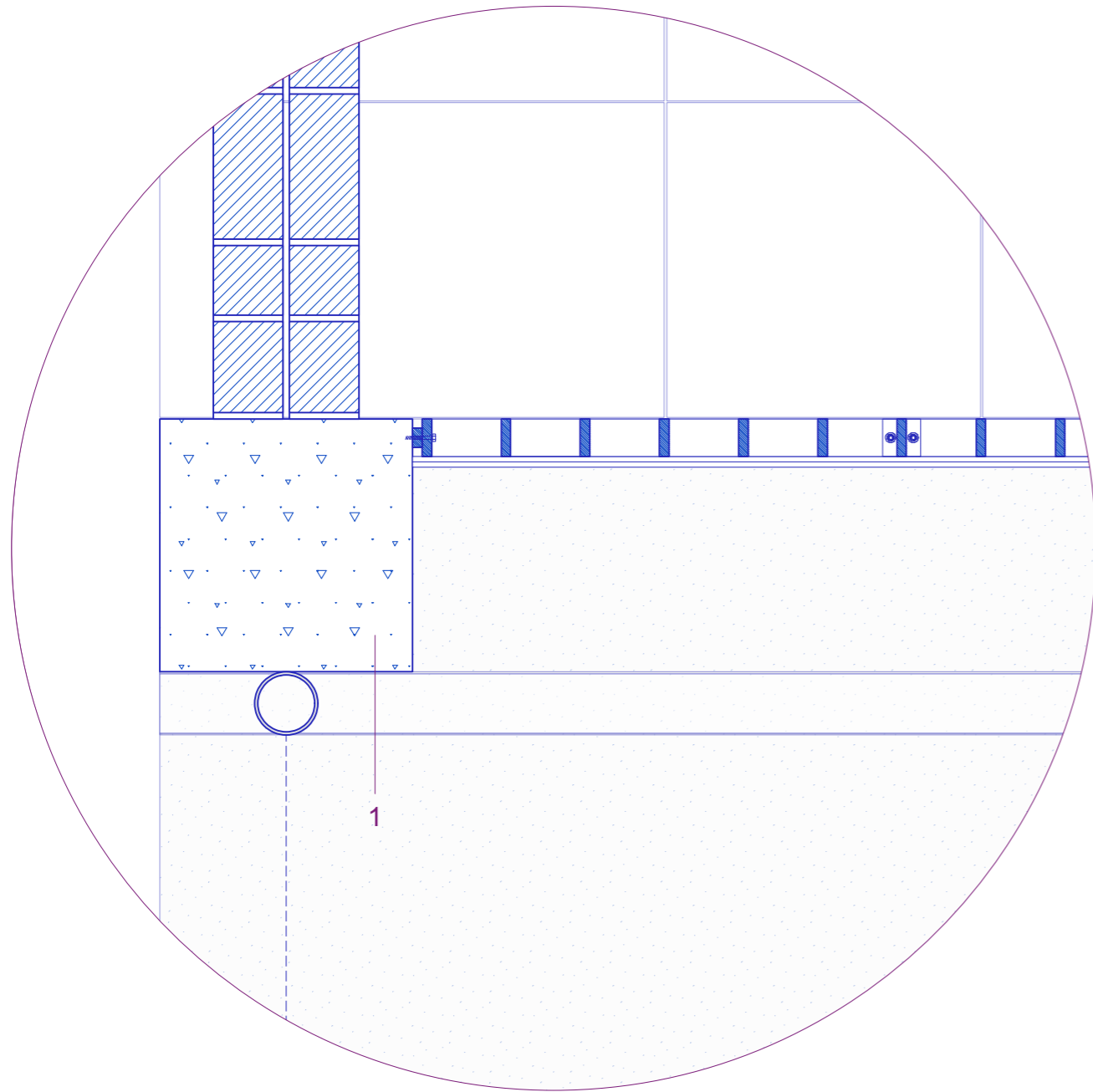
- 1
- HS steel Interior panels T:6mm, bolted
 - HS steel style and battens 60x30mm T:3mm
 - HS steel exterior panels T:6mm, bolted
 - Anodized coating
 - Paint coating
- 2
- Aluminium sliding windowframe
 - 3 tracks, 30mm soundproof
 - Anodized coating
 - Paint coating
 - Single glazing, 6mm
 - HS steel foldable clothing lines system

C.2



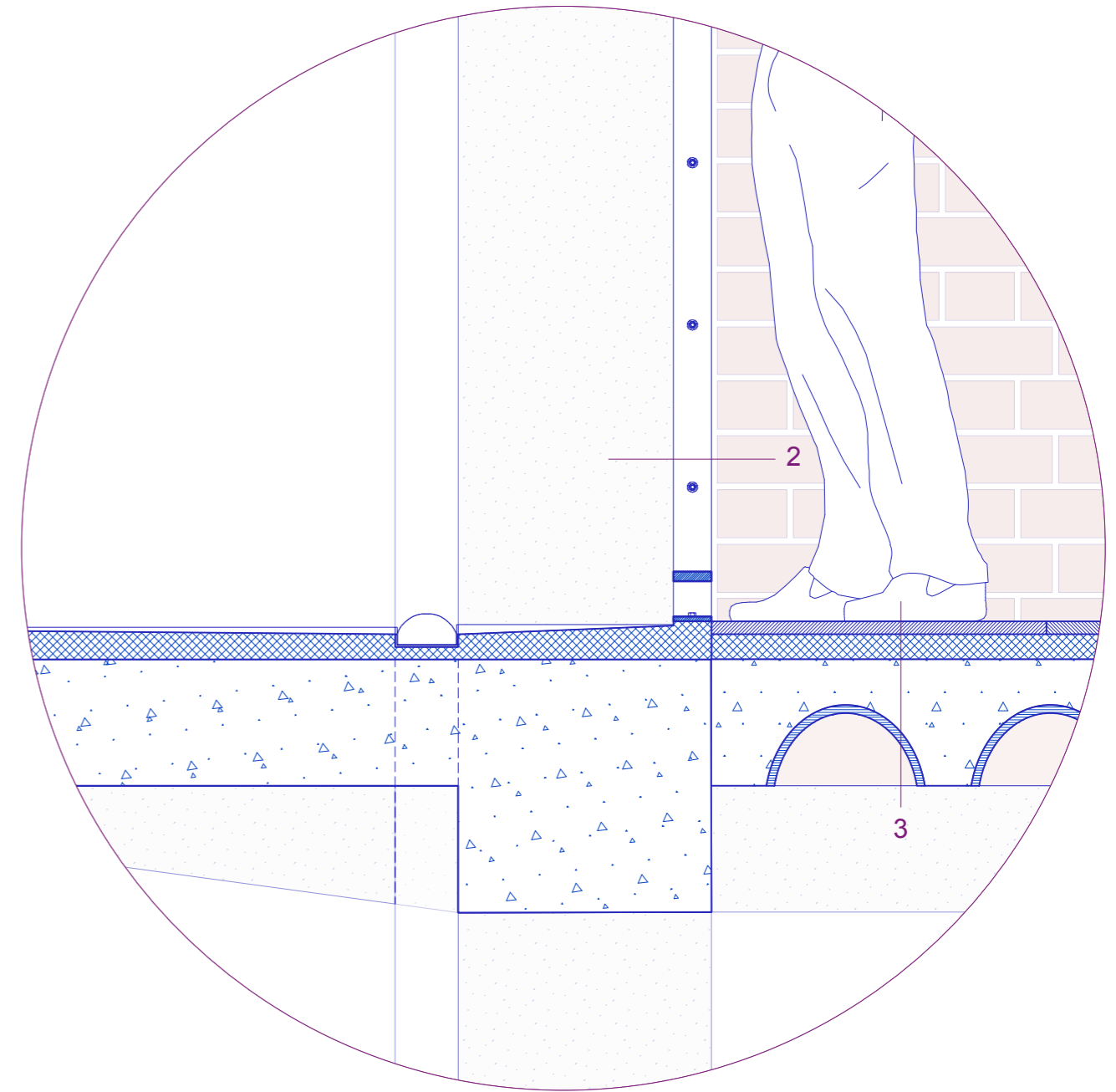
- 3
- HS steel Interior panels T:6mm, bolted
 - HS steel style and battens 60x30mm T:3mm
 - HS steel exterior panels T:6mm, bolted
 - Anodized coating
 - Paint coating
 - Flowerbox 330x330mm T:10mm
 - HS steel window cage T:0.5mm
 - Anti-corrosive primers
 - Paint coating

B.1



- 1
- Water drainage, aluminium/plastic 100x2mm (horizontal)
 - Water drainage, aluminium/plastic R=50mm (vertical)
 - Sloped Concrete roofing 50mm (extra cement)
 - (Betumen waterproofing)

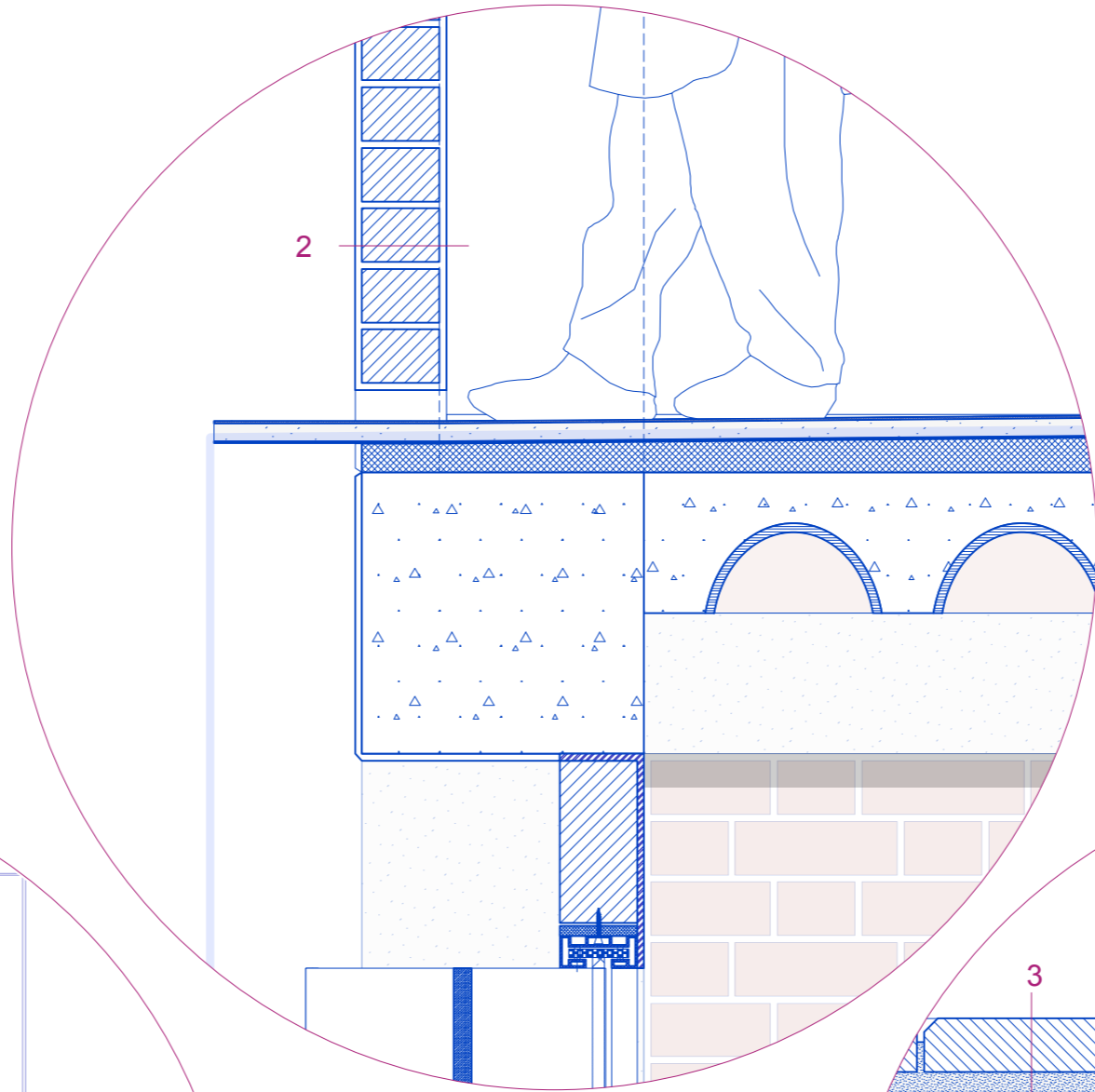
B.2



- 2
- HS steel,welded Rails 60x20mm
 - Bolted on concrete construction
 - Anti-corrosive primers
 - Paint coating
 - Bolts 4mm

- 3
- Vitrified tiles 500x500x20mm
 - Cement layer 40mm
 - (Betumen waterproofing)
 - Reinforced concrete flooring 200mm
 - Ceramic infill

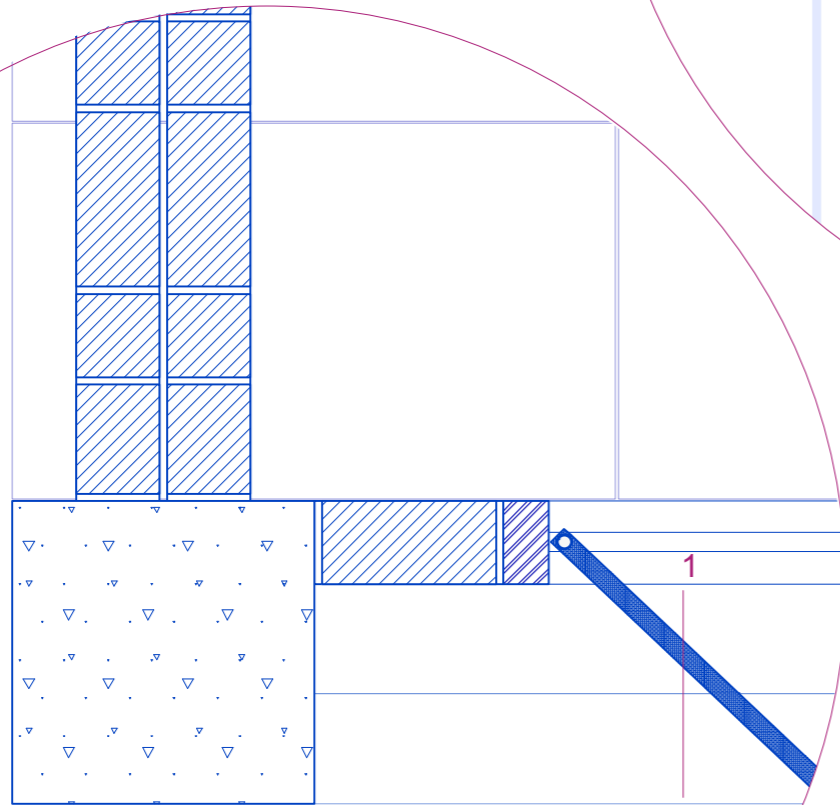
A.2



- 1
- HS steel frame T:60mm
 - with sliding (bearing construction) system
 - Anti-corrosive primers
 - Paint coating
 - HS steel Sliding panels
 - Anti-corrosive primers
 - Paint coating
 - Commercial advertisement

- 2
- Sealant layer
 - Plaster layer
 - Brick 110x230x76mm
 - Flemish bond
 - Sealant layer
 - Plaster layer

A.1



- 3
- Brick pavement
 - Compacted sand
 - Compacted aggregate base
 - Subgrade
 - Waterdrainage / duct
 - Water chanel

- 4
- Vitrified tiles 500x500x20mm
 - Cement
 - (Betumen waterproofing)
 - Concrete reinforced flooring T:400mm
 - Foundation grid structure (T:600mm)
 - Foundation piles 1000x1000mm D:2000mm
 - Waterproofing
 - Compacted aggregate base
 - Subgrade

A.3

