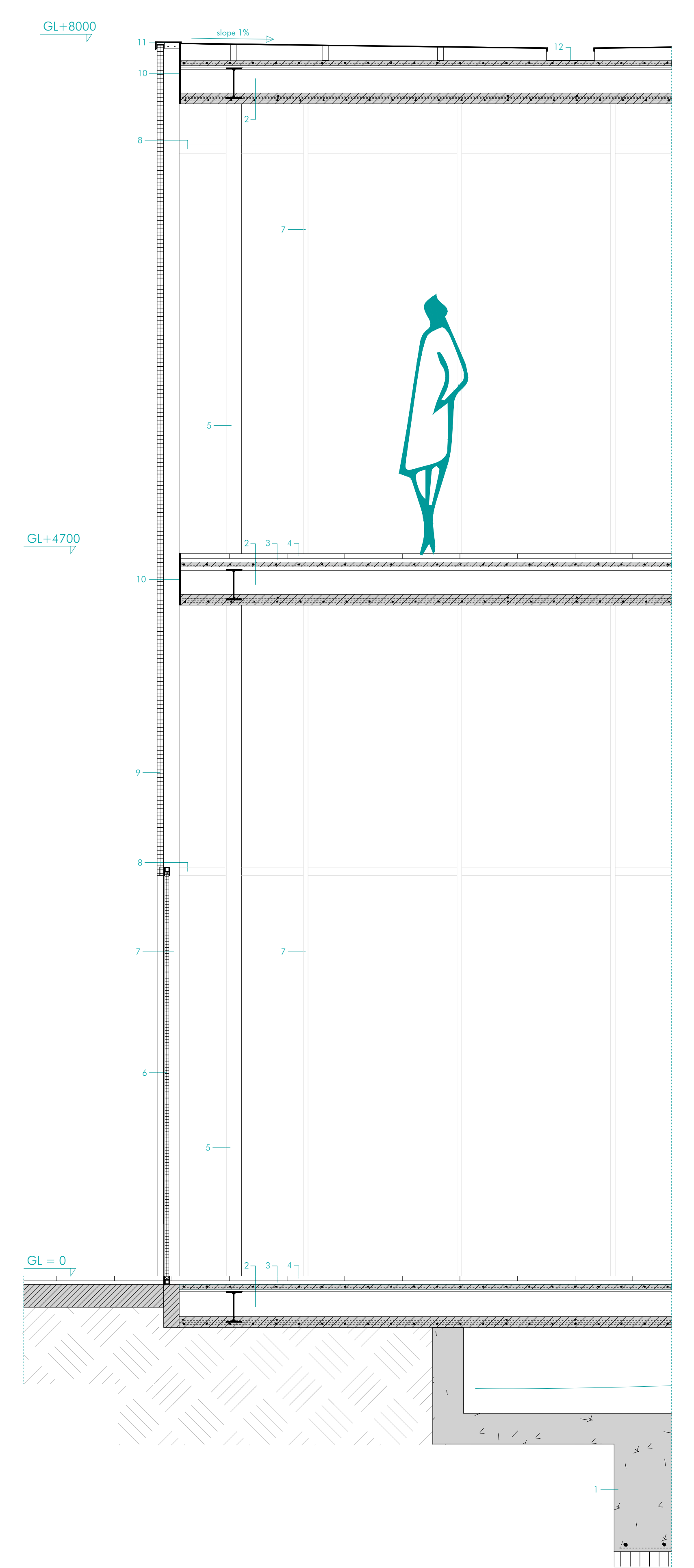
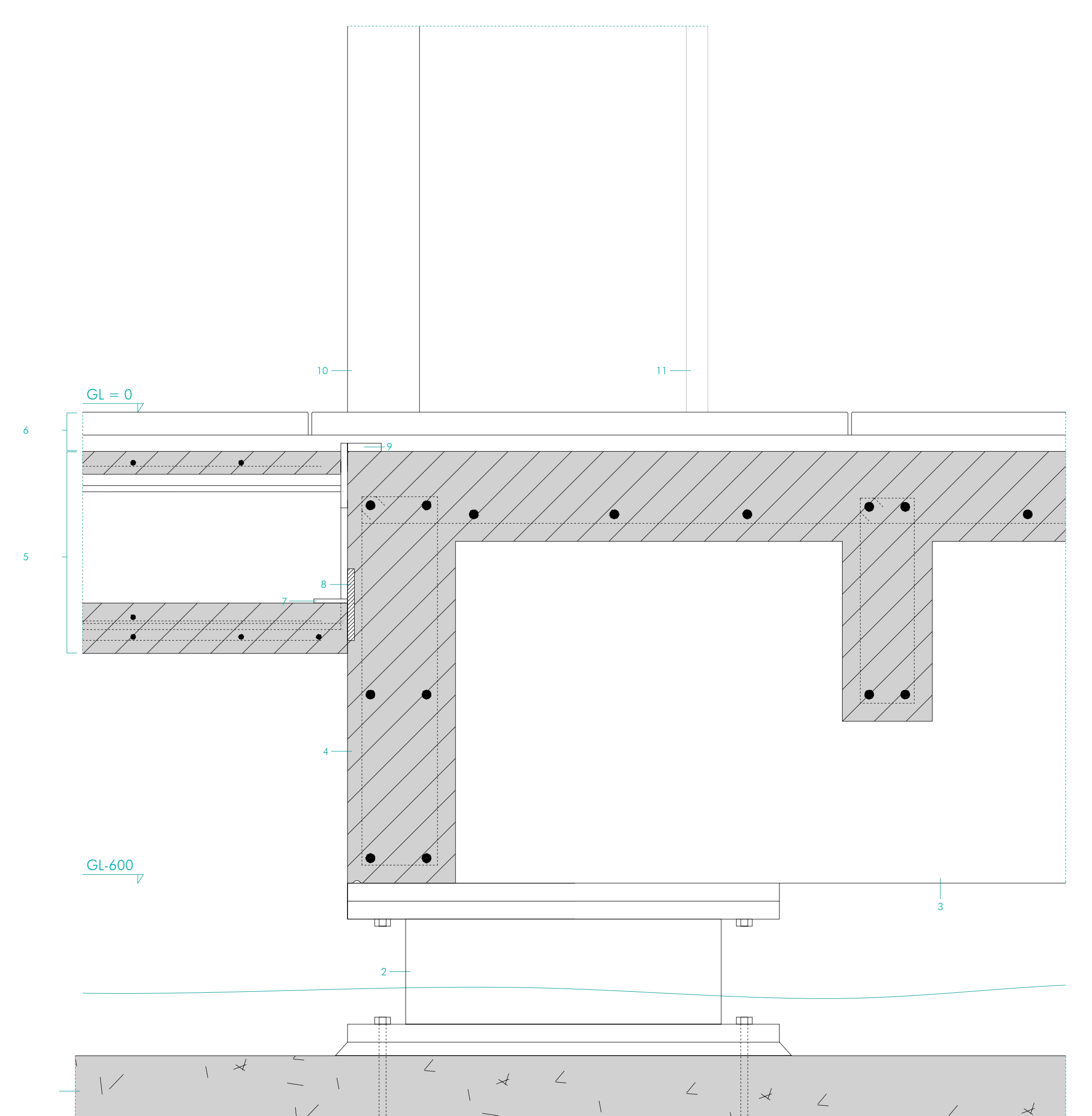


- SECTION 1:20**
ring
1. foundation (cast in place concrete)
 2. seismic base isolation (rubber on steel plates)
 3. reinforced concrete portals (e600x300mm, rubble aggregate visible), reinforcement e8-200mm
 4. concrete T-beam slabs (< > 1500mm, wood from precast visible), reinforcement e8-200mm
 5. concrete screed (polished), dilatation 800/3000/800mm
 6. concrete walls, reinforcement e8-200mm
 7. polycarbonate lowered ceiling
 8. lamps (TL)
 9. concrete circular beams (b/h 1500/75mm, wood from precast visible), reinforcement e8-200
 10. concrete radial beams (l/b/h 6000/75/1500mm, hanging from steel cables, wood from precast visible)
 11. lamps (hanging from steel cables on radial beams, length 6600mm)
 12. anchor for assembly by crane



- SECTION 1:20**
polycarbonate volume
1. concrete foundation of the circle (cast in place)
 2. slimline floor
 3. mortar bed (20mm)
 4. travertine tiles (35mm)
 5. steel column (PE200, white paint)
 6. polycarbonate sliding door (16mm)
 7. steel mullion (e30x100mm, white paint)
 8. steel mullin (white paint)
 9. polycarbonate facade (25mm)
 10. steel fascia (white paint)
 11. aluminium roofing
 12. gutter



- DETAIL 1:5**
connection polycarbonate volume to ring
1. foundation (cast in place concrete)
 2. seismic base isolation (rubber on steel plates)
 3. concrete portals (e600x300mm, rubble aggregate visible), reinforcement e8-200mm
 4. concrete T-beam slabs (< > 1500mm, wood from precast visible), reinforcement e8-200mm
 5. slimline floor
 - concrete (70mm); reinforcement e6-150mm in both directions
 - integrated steel beams (PE 200, c.t.c. 1000mm);
 - rubber granulate (15mm)
 6. finishing
 - concrete (30mm); reinforcement e6-150mm in both directions
 6. finishing
 - mortar bed (20mm)
 - travertine tiles (480x300x35mm)
 7. joint (assembly on site)
 8. tension rod
 9. joint
 10. steel column (PE200, white paint)
 11. steel mullion (e30x100mm, c.t.c. 1000mm, white paint)