

A high-resolution 4D terrestrial laser scan dataset of the Kijkduin beach-dune system, The Netherlands

Vos, Sander; Anders, Katharina; Kuschnerus, Mieke; Lindenbergh, Roderik; Höfle, Bernhard; Aarninkhof, Stefan; de Vries, Sierd

DOI

[10.1038/s41597-022-01291-9](https://doi.org/10.1038/s41597-022-01291-9)

Publication date

2022

Document Version

Final published version

Published in

Scientific Data

Citation (APA)

Vos, S., Anders, K., Kuschnerus, M., Lindenbergh, R., Höfle, B., Aarninkhof, S., & de Vries, S. (2022). A high-resolution 4D terrestrial laser scan dataset of the Kijkduin beach-dune system, The Netherlands. *Scientific Data*, 9(1), Article 191. <https://doi.org/10.1038/s41597-022-01291-9>

Important note

To cite this publication, please use the final published version (if applicable). Please check the document version above.

Copyright

Other than for strictly personal use, it is not permitted to download, forward or distribute the text or part of it, without the consent of the author(s) and/or copyright holder(s), unless the work is under an open content license such as Creative Commons.

Takedown policy

Please contact us and provide details if you believe this document breaches copyrights. We will remove access to the work immediately and investigate your claim.



OPEN

DATA DESCRIPTOR

A high-resolution 4D terrestrial laser scan dataset of the Kijkduin beach-dune system, The Netherlands

Sander Vos^{1,2}✉, Katharina Anders³, Mieke Kuschnerus⁴, Roderik Lindenbergh⁴, Bernhard Höfle³, Stefan Aarninkhof¹ & Sierd de Vries¹

Sandy coasts form the interface between land and sea and their morphologies are highly dynamic. A combination of human and natural forcing results in morphologic changes affecting both nature values and coastal safety. Terrestrial laser scanning (TLS) is a technique enabling near-continuous monitoring of the changing morphology of a sandy beach-dune system with centimetre-order accuracy. In Kijkduin, The Netherlands, a laser scanner sampled one kilometre of coast at hourly intervals for about six months. This resulted in over 4,000 consecutive topographic scans of around one million points each, at decimetre-order point spacing. Analysis of the resulting dataset will offer new insights into the morphological behaviour of the beach-dune system at hourly to monthly time scales, ultimately increasing our fundamental scientific understanding of these complex geographic systems. It further provides the basis for developing novel algorithms to extract morphodynamic and geodetic information from this unique 4D spatiotemporal dataset. Finally, experiences from this TLS setup support the development of improved near-continuous 3D observation of both natural and anthropogenic scenes in general.

Background & Summary

Sandy coasts constitute about one third of all coasts in the world and their morphologies are highly dynamic in nature¹. Humans have populated these areas for millennia² and it is estimated that nowadays more than 40% of the world population lives within 100 kilometres from the shore^{3,4}, a percentage which is expected to increase further⁵. This increasing coastal population has a large influence on coastal systems^{6,7} due to loss and disturbance of fragile ecosystems^{8,9}, while sea level rise and changing weather patterns, due to climate change, add additional pressure to sandy coasts^{10–13}. Presently, around 82,500 kilometres of sandy coasts worldwide show retreating coastlines¹ amounting to an area¹⁴ of about 28,000 km² which can be linked to human activities^{15–17}.

In defence of the coast, hard structures like dikes, sea-walls and groins have been added at numerous places with varying effectiveness¹⁸. Sandy coastal adaptations with a larger degree of natural dynamics have been advocated as an alternative in recent years^{19–21}. Such soft interventions enable flexible maintenance and easier coastal adaptation to predicted climate change. To fully utilize these adaptations, a deeper understanding of the complex geographic system of natural and artificial sandy coasts is needed. Monitoring of dynamic coastal processes is an essential part to achieve such understanding.

Coastal processes and associated morphological changes occur at multiple spatiotemporal scales ranging from centimetres to (many) kilometres and seconds to millennia (Fig. 1), which are interlinked and acting upon each other. The wide range of interacting spatial and temporal scales imposes a challenge to obtain suitable observations for monitoring. Numerous techniques are available to provide observations targeted to specific

¹Department of Hydraulic Engineering, Delft University of Technology, Stevinweg 1, 2628 CN, Delft, The Netherlands. ²Baars-CIPRO, Hoofdweg 16a, 1175 LA, Lijnden, The Netherlands. ³3D Geo Research Group, Institute of Geography, Heidelberg University, Im Neuenheimer Feld 368, 69120, Heidelberg, Germany. ⁴Department of Geoscience and Remote Sensing, Delft University of Technology, Stevinweg 1, 2628 CN, Delft, The Netherlands. ✉e-mail: s.e.vos@tudelft.nl

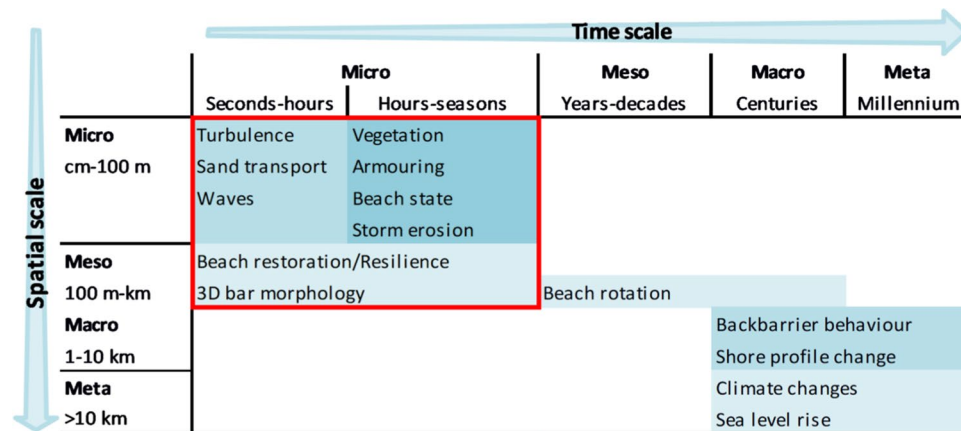


Fig. 1 Overview of coastal processes at various spatiotemporal scales according to the Coastal Tract concept (modified from⁶⁸). Processes within the red box can be monitored with near-continuous terrestrial laser scanning.

processes or morphodynamic properties (see literature overviews^{22–25}), but few techniques allow measuring at various scales without extensive, time-consuming field campaigns.

Near-continuous terrestrial laser scanning (TLS) has recently become available to monitor spatiotemporal processes with the development of programmable accurate long-range terrestrial laser scanners²⁶. Over the past years, permanent setups of these instruments have been utilised in so-called permanent laser scanning (PLS) around the world to acquire topographic representations of landslides²⁷, vegetation²⁸ and sandy/rocky coasts^{22,29–31}, and to capture and investigate dynamics of these natural landscapes.

To improve our knowledge of the complex multi-process setting of sandy beaches and dunes, a PLS system has been set up at the beach-dune system of Kijkduin, The Netherlands³². The objective of this near-continuous 3D observation system and acquired data is to increase knowledge on the variability of coastal morphology and its resilience under the influence of anthropogenic modifications and natural dynamics, as well as to advance the methodology of permanent laser scanning in coastal monitoring towards operational applicability.

A terrestrial laser scanner was mounted in a permanent setup on top of a hotel at about 38 m height above mean sea level overlooking the beach and dunes at the coast of Kijkduin, The Netherlands (Fig. 2). The dynamic morphology of the coastal area at Kijkduin is influenced by both environmental and anthropogenic forces and is not reinforced with hard structures. The beach-dune area was scanned hourly during a six-months period in the winter-spring season of 2016/2017, generating a time series of 4,082 3D point clouds.

The laser scanning data in Kijkduin is georeferenced and checked against both RTK-GNSS (Real time kinematic Global Navigation Satellite System) measurements and airborne laser scanning (ALS) data of fixed objects and the beach-dune area. A data consistency check has been performed by assessing positions and orientations of fixed objects and surfaces in the point cloud scene over time^{33,34} (see also Section on technical validation).

Each of the 4,082 hourly point clouds of the beach-dune system at Kijkduin contains between one and ten million 3D points depending on the weather conditions and scan resolution. Additional attributes, such as the laser return intensity, are available for each individual 3D point record (see section Data Records).

The PLS dataset is valuable for studying hydrodynamics, morphology, aeolian transport, vegetation and the impact of anthropogenic behaviour. High-frequency measurements of the beach and dune surface are expected to provide insight on aeolian sand transport towards the coast during low tides. Over the full observational period of six months, processes can be characterized in terms of their variability, return frequency, and overall contribution to topography. Similarly, anthropogenic modifications can be timed and assessed for their effect on the long-term status of the beach-dune environment. In addition to coastal monitoring, the 4D point cloud dataset is valuable for investigating characteristics of near-continuous laser scanning and for algorithm development for improved change detection and characterization in time series of 3D point clouds. Methodology of 3D change analysis has only been recently starting to incorporate the full temporal information of such 4D point cloud data. The availability of a large PLS dataset may foster ongoing research for improved 4D change extraction. We provide some insights on analyses making use of the full time series information in the section Usage Notes.

Methods

The 4D point cloud dataset was obtained with an eye-safe (class 1³⁵) Riegl VZ-2000 laser scanner³⁶ operating at a wavelength of 1,550 nm. The instrument was positioned on top of NH Hotel Atlantic in Kijkduin overlooking the beach (see Fig. 2) on a four-legged iron pole which was cross-braced to minimize horizontal displacements. The laser scanner was protected by a self-designed double PVC (Polyvinyl Chloride) housing to avoid fouling and temperature extremes potentially affecting the laser scanner.

The acquisition and processing scheme of the 4D point cloud is visualized in Fig. 3. Hourly scans were initiated with a command computer by providing the laser scanner with online weather information³⁷. Atmospheric

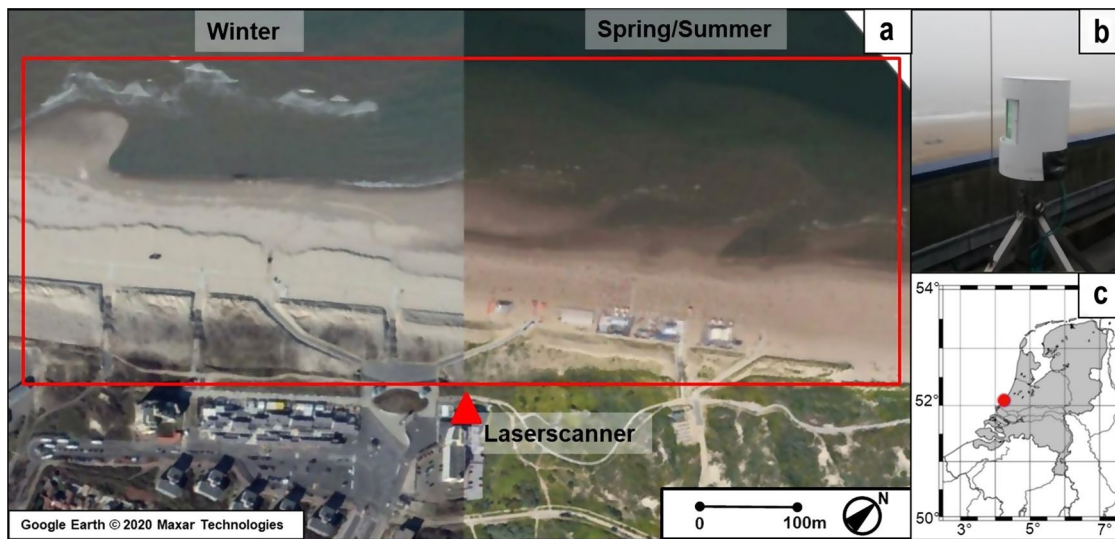


Fig. 2 Overview of the study site. **(a)** Aerial photo of the winter and spring-summer beach-dune area (with beach pavilions in the spring-summer period) and the scan area within the red rectangle. **(b)** The laser scanner on a hotel next to the beach (indicated by a red triangle in **a**). **(c)** The location of Kijkduin (52.07°N, 4.22°E) in The Netherlands.

temperature, pressure and relative humidity were uploaded and used internally by the instrument to account for varying atmospheric influence on the time-of-flight range measurements.

The 3D point measurements were acquired in polar coordinates in the manufacturer's proprietary format and converted to local Cartesian coordinates with the laser scanner sensor as origin (RivLib library³⁸ [version 2.5.9])). To reduce data volumes in the less relevant area near the laser scanner, each point cloud was subsampled to a minimum point spacing of 1 cm. Therein, all points with 1 cm distance around a randomly picked point are flagged until all points are either picked or flagged, and flagged points are deleted³⁹. Point clouds are finally converted to losslessly compressed LAZ format⁴⁰, in which coordinates are stored with millimetre precision. No other filtering of points or thresholding of any point attributes was applied in order to preserve all original measurements.

To improve the alignment accuracy between different point cloud epochs, a time-dependent alignment was derived for individual scans in the time series. For this, rigid (rotation/translation) transformation matrices were determined via the Iterative Closest Point (ICP) method⁴¹ using stable planar surfaces in the scene to align each epoch to the first in the series of scans (i.e., Nov 11th 2017, 20:00).

Additionally, six circular reflector targets with five-centimetre diameter were spread out over a 200-degree horizontal field of view and were measured with a GNSS sensor at the beginning of the fieldwork. These measurements were used to obtain a rigid global transformation matrix³² to convert the local Cartesian coordinates into the Dutch National coordinate system (RD-NAP⁴²). The matrix was calculated once at the beginning of the field campaign with the proprietary software Riscan Pro⁴³ and is provided with the dataset.

Additional instrument data, consisting of 1 Hz inclination (pitch and roll) values during acquisition, is provided separately with each point cloud epoch. All data is available via the Pangaea data repository⁴⁴.

Data Records

The 4D point cloud dataset⁴⁴ contains 4,082 point clouds acquired hourly during 190 days between November 11th 2016, 20:00 and May 26th 2017, 08:00, covering most of the meteorological winter/spring season. Average daily uptime (i.e., time available for scanning per day) of the laser scanner in this period was about 85%. Figure 4 shows the daily uptime and scan range of the laser scanner (expressed as the 95th percentile of measurement ranges [in metres]). High range values typically correspond to scan acquisition under clear weather conditions, whereas low values are associated with high humidity in the form of clouds, mist or rain that reduce the achievable scan range. Uptime at the end of 2016 and in March 2017 was low due to power outages, scheduler program bugs, and limited access to the site during the Christmas holiday season.

Scans were acquired with a pulse repetition of 100 kHz and a maximum range of 1,800 m to obtain good scan coverage in the outer ranges. The field of view was about 245° horizontally with a scan angle resolution of 0.05° horizontally and vertically.

Additional high-resolution scans (0.013° resolution) were acquired around noon on a daily basis starting from January 22nd 2017. Typical scan duration was about 4 minutes for the normal resolution scan and 20 minutes for the high-resolution scan. Given these scan durations, it can, to some extent be assumed that weather is stable throughout the scans. Still, it may occasionally happen that heavy rain starts or stops during scanning. Such scans could be identified by an increase of noise, as some individual laser beams will be reflected by rain drops.

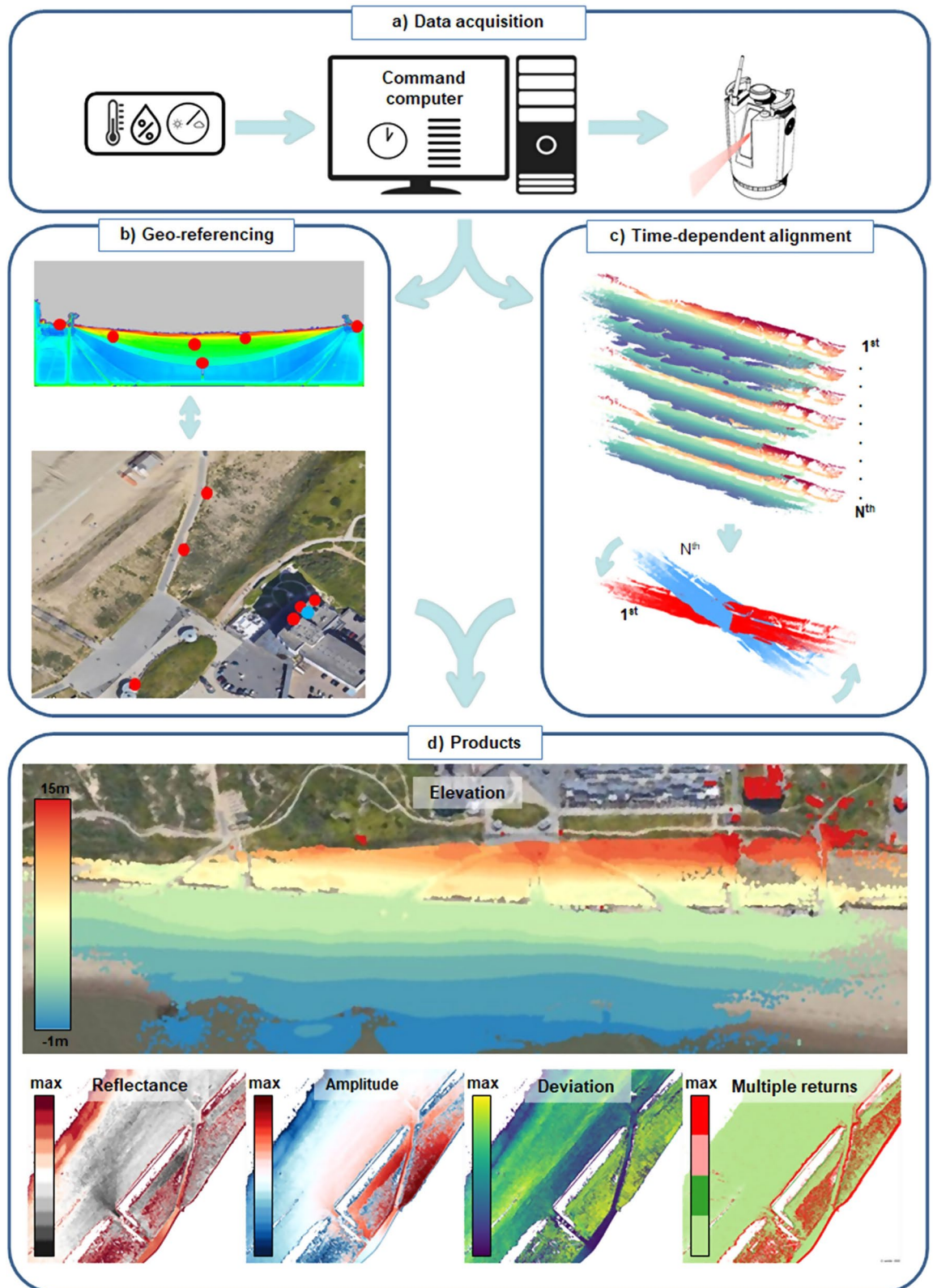


Fig. 3 Schematic overview of the laser scan acquisition, processing and products. (a) Laser scans were initiated by a time-scheduled command computer with online weather information. (b) A global geo-reference transformation matrix was determined by matching reflectors (red dots, (b) upper image) in a scan of the laser scanner (blue dot) with GNSS measured reflectors in real space (b, lower image). (c) A time-dependent fine alignment transformation matrix for each epoch was obtained by comparing each Nth scan (upper figure c) with the first scan of the acquisition period (lower figure c). (d) Application of both transformations to a scan results in various georeferenced products.

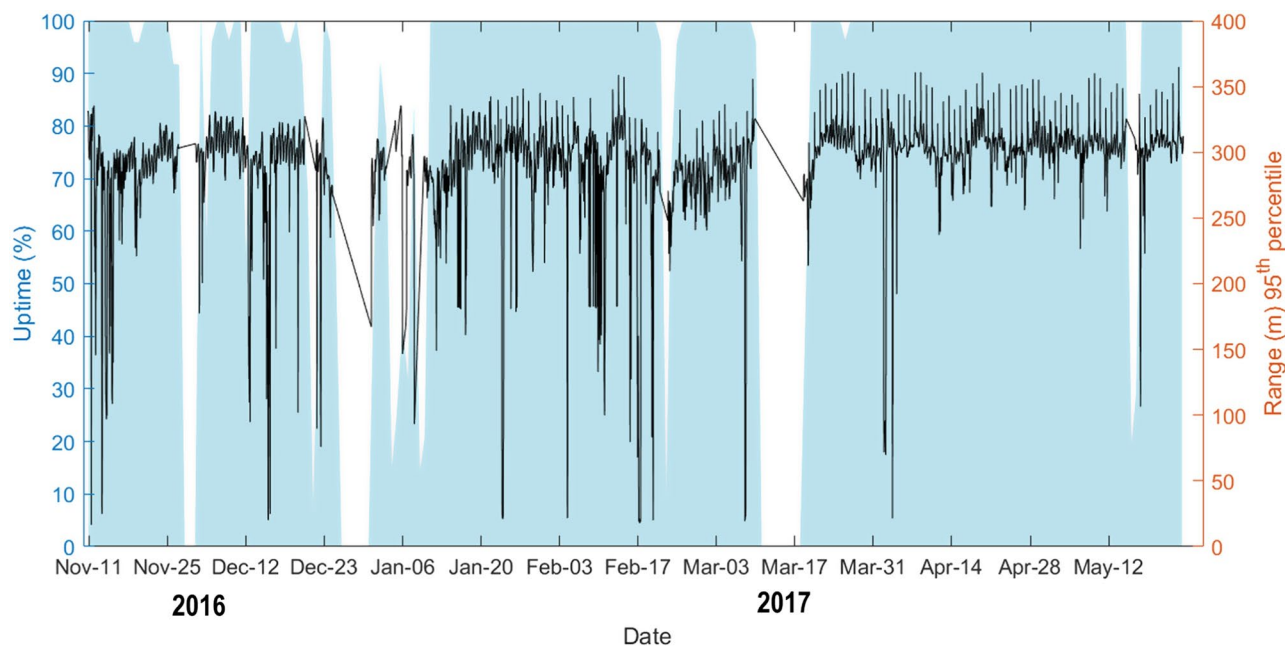


Fig. 4 Daily uptime and scan range of the laser scanner. The uptime is indicated by the blue area and the range by the black line. The uptime (0–100%) is derived from the number of scans per day (reference is once per hour) while the scan range is expressed by the 95th percentile of range values in the point cloud of each scan.

The structure of the scan dataset is visually represented in Fig. 5. One global transformation matrix is available for the georeferencing of all scans from local coordinates to Dutch national coordinates (RD-NAP). For each individual scan, four files are available containing point cloud data, metadata on acquisition settings, scanner inclination data (roll and pitch of the internal inclination sensor) and a rigid transformation matrix for time-dependent alignment. The time-dependent alignment matrix has to be applied before the global transformation matrix to obtain a correctly aligned and georeferenced point cloud.

Individual point clouds contain about one million points (median 1,063,034) for hourly scans and up to 11 million points (median 11,269,352) for daily high-resolution scans, each depending on weather and tidal conditions and scanner settings. Point information consists of the 3D coordinate and laser pulse information, which are amplitude, reflectance, shape deviation and echo types (see Fig. 5). The returned signal amplitude depends on the power of the emitted signal, on the range, and on the target reflectance. The reflectance attribute of each point is a range-corrected amplitude internally calculated by the scanner based on calibration of the manufacturer. The reflectance (here defined as by Rieg⁴⁵ and not the target surface reflectance in the SI sense) is influenced by the target geometry, material, wetness, size in relation to the incoming laser beam footprint and incidence angle of the laser beam⁴⁶. The deviation of the returned signal from the emitted pulse shape is dependent on the local surface structure, such as roughness and the incidence angle⁴⁷. The signal echo type describes the recorded position of the returned signal from a single laser pulse. The return signal consists of a single or of multiple echo(es). Multiple echoes occur when the laser beam hits more than one target surface, for example where the laser beam penetrates vegetation on the dunes. The echo type returns for a laser pulse may be single, first, interior or last⁴⁸.

The metadata for each epoch contains information about the scan pattern, i.e. field of view of the scan and vertical and horizontal angular resolution and the start date and time of the scan. A separate file is provided for each scan with inclination data recorded by the internal sensor, which contains the 1 Hz roll and pitch angles of the instrument during acquisition of the respective point cloud.

The point density varies spatially within the scene and over time, depending on the measurement geometry, surface reflectance properties, tidal level and meteorological conditions. Typical point densities (see Fig. 6) for a scan vary between 50 (standard resolution) to 4,500 (high resolution) points per square metre on top of the dunes directly in front of the hotel, to 1 to 5 points per square metre in the outer areas of the point cloud scene. Gaps in the point cloud scene are the result of scan occlusions, for example at the foot of the dune and laser shot dropouts in areas of moist to wet surfaces⁴⁹.

Generally, scene coverage is lower when tides are high and larger parts of the outer beach are covered with water. The general horizontal tidal range is between 50 and 75 meters depending on local weather, tide and wave conditions.

Technical Validation

The acquired point cloud data was validated against four reference datasets: three GNSS surveys (acquired on January 26th⁵⁰, and February 19th and 24th, 2017), and an airborne laser scanning (ALS) point cloud, acquired on January 21st, 2017, by Rijkswaterstaat⁵¹. For this assessment, the respective epochs from the PLS data were georeferenced using the global transformation matrix (see Methods). PLS and ALS point clouds were manually

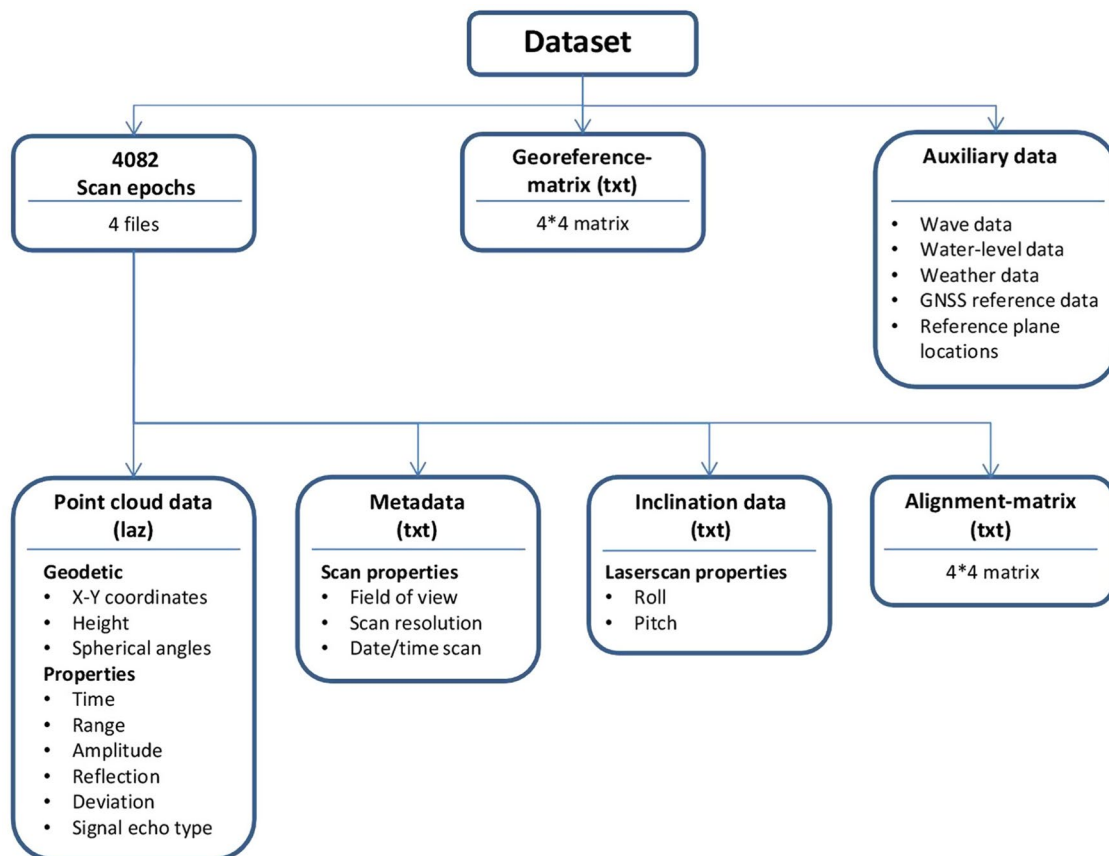


Fig. 5 Visual representation of the laser scan dataset with supplementary data.

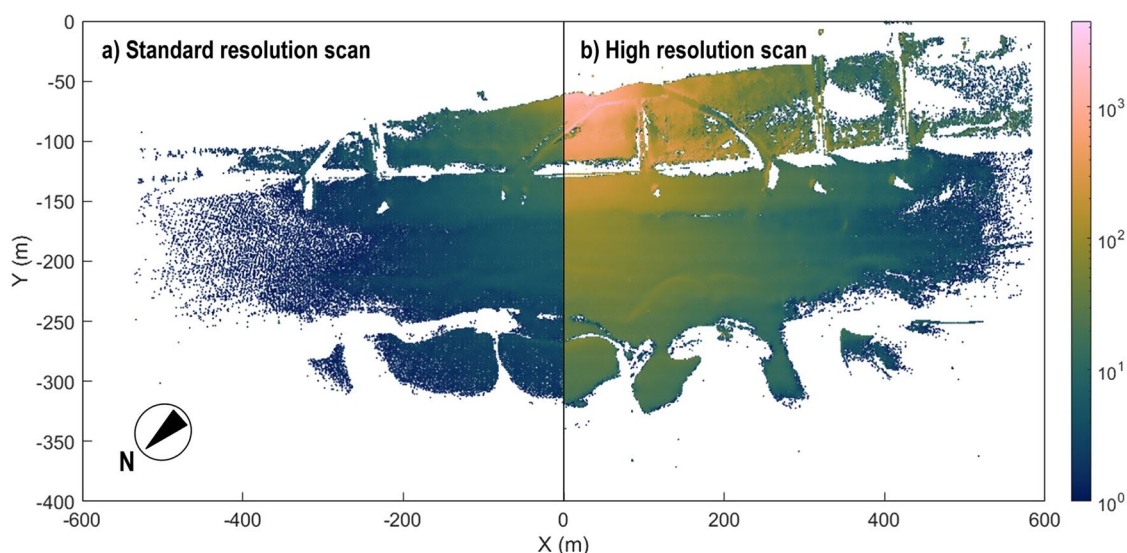


Fig. 6 Point densities of a standard- and a high-resolution scan. Displayed point clouds were both acquired on February 1st 2017, around noon, with an angular resolution of 0.05° (a) and 0.013° (b), respectively. The number of points per square metre decreases with increasing range from the scanner. Gaps in the data are due to occlusion in the scene geometry and/or laser shot dropouts on wet surfaces.

cleaned for outliers and objects in the scene, so that only ground surface points were compared. Reference data were compared to the temporally nearest low-water scan resulting in a maximum time difference of three hours between the scan time and the GNSS and ALS acquisition, respectively. For the comparison, the vertical difference was derived between either GNSS or ALS point to the horizontally closest point in the respective PLS point cloud within a maximum distance of 50 cm.

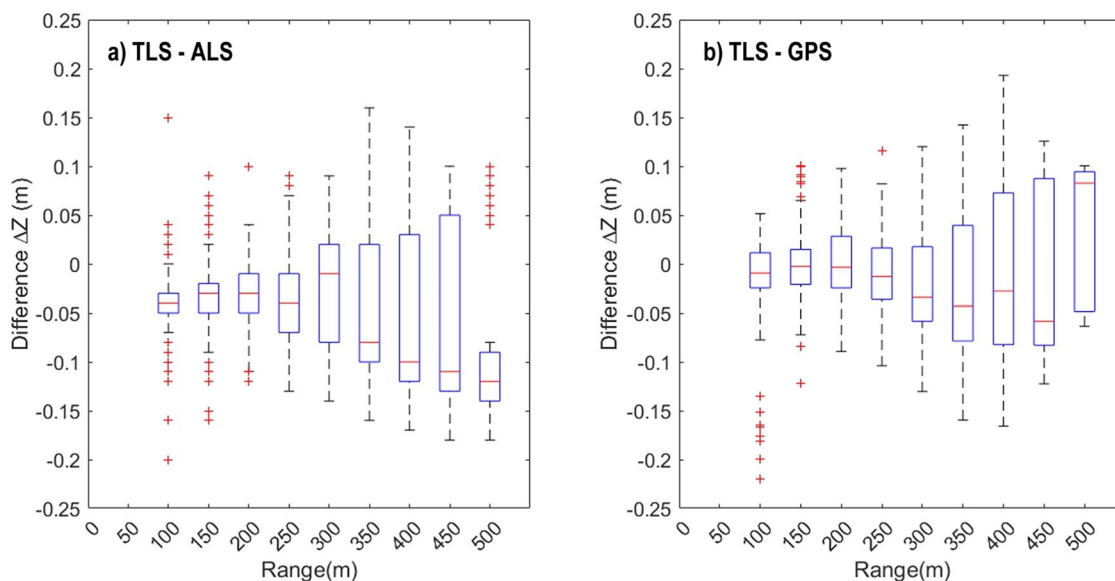


Fig. 7 Comparison of terrestrial laser scanning (TLS) heights against available reference datasets acquired by airborne laser scanning (ALS) and GNSS. **(a)** Boxplot of the height difference between the TLS and ALS measurements as a function of the TLS scan range. The box indicates the first quartile, median (red line) and third quartile of values with minimum and maximum indicated by the error bar. Outliers are indicated by red points. **(b)** Boxplot of the height differences between the TLS-based height and GNSS measurements of the surface as a function of scan range.

The differences between the acquired point cloud data and the reference data in dependence of the ranging distance to the PLS sensor are shown in Fig. 7. The graphs give an indication of the increasing uncertainty of PLS measurements as a function of the measurement range. The average difference increases by about 1 to 2 cm per 100 m range increase. This performance is similar to results obtained by PLS acquisitions in Belgium with the same PLS setup⁵² and as reported in earlier research⁵³.

The uncertainty of the PLS dataset was further assessed regarding the time-dependent alignment between point clouds^{32–34}. Although the laser scanner was fixed in a permanent position during the entire observation period, slight movement of the instrument under variable weather influences might occur and affect the time-dependent alignment of topographic measurements. The internal inclination sensor of the laser scanner recorded roll and pitch values with standard deviations of 0.01° during a scan acquired under calm weather conditions. As expected from the permanent observation set up, larger deviations occur during stormy weather conditions (i.e. wind speeds of 10 m/s and higher), amounting to standard deviations of up to 0.1° , equivalent to an error of about 1.7 cm in height at 10 m range.

Two approaches have been deployed to assess the relative alignment accuracy of the 4D point cloud data: one based on the stability of measured range distances to ground control points and baselines between stable objects²⁵ and the other based on point-to-plane distances between stable planar surfaces in the scene³³.

Range measurements to stable reference objects in the scene are expected to be constant if the laser scanner experienced no movement at all. However, daily and seasonal atmospheric effects of humidity and surface moisture influence the refraction of the laser beam which appear as fluctuations in the range measurements that are indirectly linked to temperature variations³³. In the assessment of time-dependent ranges³⁴, the range measurement to three reference objects in the scene at a distance of 80 to 360 m to the laser scanner showed variations of 2.0 to 3.0 cm during the six-months period (from November 11th, 2016 to May 25th, 2017).

The time-dependent measurement uncertainty of acquired point clouds is further examined by comparing the lengths of three baselines between stable reference objects with baseline lengths between 90 and 425 m. These baselines were derived for daily scans during low tide and yielded an average daily standard deviation of 1.0 to 3.0 cm.

The alignment accuracy after application of the time-dependent, rigid transformation per epoch is assessed via point-to-plane distances for each epoch to the reference scan, using an independent set of stable planar surfaces³³. These time-dependent residual distances for 13 stable surfaces in the scene yield a median alignment accuracy of 0.4 cm with a standard deviation of 1.9 cm for the entire time series.

These assessments of time-dependent alignment provide an estimate of the uncertainty to be considered in analysing the 4D point cloud data, particularly the minimum change that can be confidently detected between two or more point clouds in the time series.

Usage Notes

Typical usage of topographic point clouds regards the derivation of morphometric properties of the scene, for example by deriving a Digital Elevation Model (DEM) per epoch²³. Analyses of temporal dynamics can be performed by comparing the topography between pairs of point cloud epochs. This can be achieved via DEM differencing³⁴ or via direct point cloud comparison⁵⁵. Coastal studies have further made use of backscatter

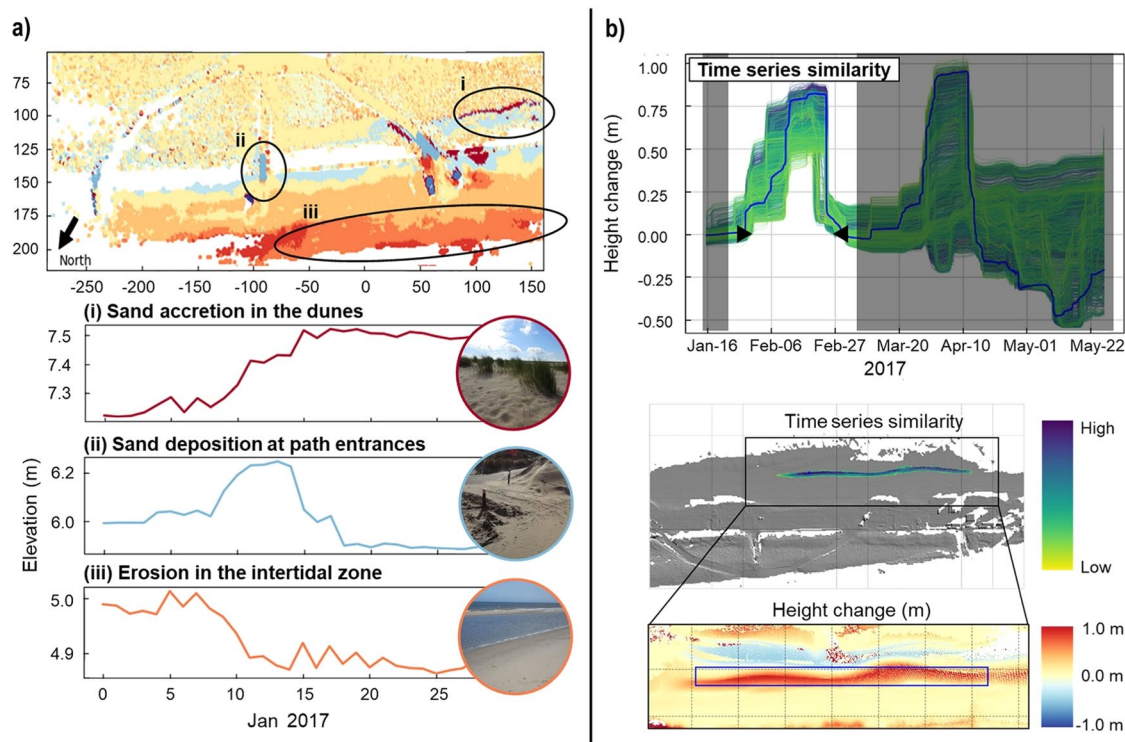


Fig. 8 Time series-based methods for change analysis applied to 4D point clouds of Kijkduin. **(a)** Time series clustering to identify change patterns in the beach scene. Subfigures show an example of identified sand deposition in small areas where the paths meet the beach and erosion in the intertidal area for daily point clouds of January 2017. **(b)** Spatiotemporal segmentation to extract change forms such as temporary accumulation through a sandbar. Change forms are spatially delineated regarding similar histories of surface change in neighbouring locations during their occurrence in the time series (period outside change form shown greyed).

information, i.e. the laser return intensity, to analyse spatially and temporally variable surface moisture on the beach^{56–58}.

Point clouds can be processed, visualised and corrected with various open source tools (e.g., CloudCompare³⁹, Point Cloud Library⁵⁹ or Python with the laspy package⁶⁰) and closed source software packages for point cloud processing (e.g., Matlab⁶¹, LAStools⁶² and OPALS⁶³).

To make use of the full temporal domain in 4D point cloud data, first methods were developed to extract information on coastal surface processes. Time series clustering⁶⁴, using time series at locations in a grid of 1.0 m resolution as input, was used to identify change patterns in the beach-dune scene, by grouping areas on the beach/dune that are subject to similar surface change dynamics, such as continual erosion in the intertidal zone or sand deposition at anthropogenic infrastructure (Fig. 8(a)). To automatically detect and extract individual temporary changes from full 3D time series, a method of spatiotemporal segmentation was developed⁶⁵. This time series-based method removes the need to select analysis periods for change analysis, as temporary accumulation and erosion are detected and delineated using the surface change histories of locations in the scene (Fig. 8(b)).

Methodological research to enable automatic analysis of 4D point cloud data is ongoing, and may benefit from the dataset presented herein. Resulting information on surface change dynamics can be used for subsequent analysis of coastal processes at this site.

External meteorological and hydrodynamic data are available to integrate in the analysis of coastal behaviour at Kijkduin. The Dutch meteorological office (KNMI) provides weather information of Hoek van Holland⁶⁶, the closest professional weather station to Kijkduin. Rijkswaterstaat⁶⁷ provides wave height information on the North Sea. These additional meteorological and wave height data are provided with the scan dataset on Pangaea⁴⁴, with friendly permission from KNMI and Rijkswaterstaat. Additionally, local wave information modelled with Delft3D-Wave can be integrated, for which the data and scripts are openly available as supplement to²⁵.

Code availability

The transformation matrices for time-dependent alignment were calculated using the module ICP in the software package OPALS⁶². The rigid alignment was calculated by minimizing point-to-plane distances using a search radius of 0.5 m for plane fitting and a sampling distance of 0.05 m. Stable parts were extracted with 0.5 m radius at locations of planar surfaces.

Python and Matlab scripts are provided with the data, with basic functions to read and write the point cloud data from the LAZ files, to apply the rigid transformation matrices to the point cloud data for time-dependent alignment and georeferencing, and to read out information on scan settings from the metadata files of an epoch.

Received: 23 September 2021; Accepted: 30 March 2022;

Published online: 28 April 2022

References

- Luijendijk, A. P. *et al.* The State of the World's Beaches. *Sci Rep.* **8**, <https://doi.org/10.1038/s41598-018-24630-6> (2018).
- Barlett, M. Around the world in Four Millennia, *Harvard Science Review* (2006).
- IOC (Intergovernmental Oceanographic Commission)/ UNESCO (United Nations), IMO, FAO, UNDP, A *Blueprint for Ocean and Coastal Sustainability. An Inter-agency Paper towards the Preparation of the UN Conference on Sustainable Development (Rio + 20)* IOC/UNESCO, Paris, p. 42 (2011).
- Small, C. & Nicholls, R. J. A global analysis of human settlement in coastal zones. *J. Coastal Res.* **19**, West Palm Beach (Florida), 584–599 (2011).
- Shi, H. & Singh, A. Status and interconnections of selected environmental issues in the global coastal zones. *Journal of Human Environment* **32**, 145–152 (2003).
- Intergovernmental Panel on Climate Change. Coastal Systems and Low-Lying Areas. *Climate Change 2014 – Impacts, Adaptation and Vulnerability: Part A: Global and Sectoral Aspects: Working Group II Contribution to the IPCC Fifth Assessment Report*. Cambridge: Cambridge University Press, 361–410, <https://doi.org/10.1017/CBO9781107415379.010> (2014).
- Temmerman, S. *et al.* Ecosystem-based coastal defence in the face of global change. *Nature* **504**, p. 79, <https://doi.org/10.1038/nature12859> (2013).
- United Nations Environment Programme (UNEP). *Marine and Coastal Ecosystems and Human Wellbeing: a Synthesis Report Based on the Findings of the Millennium Ecosystem Assessment*, p. 76 (2006).
- United Nations Environment Programme (UNEP), GEO-5, *Global Environment Outlook. Environment for the Future We Want*, p. 528 (2012).
- Nicholls, R. J. *et al.* Coastal Systems and low-lying areas. *Climate change 2007: Impacts, Adaptation and Vulnerability. Contribution of Working Group II to the Fourth Assessment Report of the Intergovernmental Panel on Climate Change*, Cambridge University Press, Cambridge (UK), p. 315–356 (2007).
- Hinkel, J. *et al.* Sea-level rise scenarios and coastal risk management. *Nat. Clim. Change* **5**, 188–190, <https://doi.org/10.1038/nclimate2505> (2015).
- Hinkel, J. *et al.* A global analysis of erosion of sandy beaches and sea-level rise: An application of DIVA. *Global and planetary change* **111**, <https://doi.org/10.1016/j.gloplacha.2013.09.002> (2013).
- Ranasinghe, R. Assessing climate change impacts on open sandy coasts: A review. *Earth-Sci. Rev.* **160**, <https://doi.org/10.1016/j.earscirev.2016.07.011> (2016).
- Mentaschi, L., Voudoukas, M. I., Pekel, J., Evangelos, V. & Feyen, L. Global long-term observations of coastal erosion and accretion. *Sci Rep.* **8**, <https://doi.org/10.1038/s41598-018-30904-w> (2018).
- Rijn, L. van. Coastal erosion and control. *J. Ocean Coast Manag.* **54**, 867–887 (2011).
- Vörösmarty, C. J. *et al.* Anthropogenic sediment retention: major global impact from registered river impoundments. *Glob. Planet Change* **39**, 169–190, [https://doi.org/10.1016/S0921-8181\(03\)00023-7](https://doi.org/10.1016/S0921-8181(03)00023-7) (2003).
- Zaggia, L. *et al.* Fast shoreline erosion induced by ship wakes in a coastal lagoon: Field evidence and remote sensing analysis. *PLOS ONE* **12**, e0187210, <https://doi.org/10.1371/journal.pone.0187210> (2017).
- Stive, M. J. F. *et al.* A new alternative to saving our beaches from sea-level rise: The Sand Motor. *J. Coastal Res.* **29**, 1001–1008, <https://doi.org/10.2112/JCOASTRES-D-13-00070.1> (2013).
- Schipper, M. A. *et al.* Initial spreading of a mega feeder nourishment: Observations of the Sand Engine pilot project. *Coastal Engineering* **111**, 23–38, <https://doi.org/10.1016/j.coastaleng.2015.10.011> (2016).
- Bridges, T. S. *et al.* ‘Engineering with Nature’ promotes tripple-win outcomes. *Terra et Aqua* **135**, 17 (2014).
- Vriend, H. J. de, Koningsveld, M. van, Aarninkhof, S. G. J., Vries, M. B. de & Baptist, M. J. Sustainable hydraulic engineering through building with nature. *J. Hydro-Environ Res.* **9**, 159–171, <https://doi.org/10.1016/j.jher.2014.06.004> (2015).
- Brand, E., Chen, M. & Montreuil, A. Optimizing measurements of sediment transport in the intertidal zone. *Earth-Sci. Rev.* **200**, 1–10, <https://doi.org/10.1016/j.earscirev.2019.103029> (2020).
- O’Dea, A., Brodie, K. L. & Hartzell, P. Continuous Coastal Monitoring with an Automated Terrestrial Lidar Scanner. *J. Mar. Sci. Eng.* **7**, 37, <https://doi.org/10.3390/jmse7020037> (2019).
- Ton, A. *et al.* Beach and nearshore monitoring techniques, *Sandy Beach Morphodynamics*, Elsevier, <https://doi.org/10.1016/B978-0-08-102927-5.00027-8> (2020).
- Vos, S. E. *et al.* Cross-shore intertidal bar behaviour along the Dutch coast: Laser measurements and conceptual model. *J. Mar. Sci. Eng.* **8**, 1–21, <https://doi.org/10.3390/jmse8110864> (2020).
- Eitel, J. U. H. *et al.* Beyond 3-D: The new spectrum of lidar applications for earth and ecological sciences. *Remote Sens. Environ.* **186**, 372–392, <https://doi.org/10.1016/j.rse.2016.08.018> (2016).
- Kromer, R. A. *et al.* Automated Terrestrial Laser Scanning with Near Real-Time Change Detection - Monitoring of the Séchillenne Landslide. *Earth Surface Dynamics* **5**, 293–310, <https://doi.org/10.5194/esurf-5-293-2017> (2017).
- Campos, M. B. *et al.* A Long-Term Terrestrial Laser Scanning Measurement Station to Continuously Monitor Structural and Phenological Dynamics of Boreal Forest Canopy. *Front. Plant Sci.* **11**, 2132, <https://doi.org/10.3389/fpls.2020.606752> (2021).
- Blenkinsopp, C. E., Mole, M. A., Turner, I. L. & Peirson, W. L. Measurements of the time-varying free-surface profile across the swash zone obtained using an industrial LIDAR. *Coast. Eng.* **57**, 1059–1065, <https://doi.org/10.1016/j.coastaleng.2010.07.001> (2010).
- Brand, E. *et al.* Cross-Shore Suspended Sediment Transport in Relation to Topographic Changes in the Intertidal Zone of a Macro-Tidal Beach (Mariakerke, Belgium). *J. Mar. Sci. Eng.* **7**, 172, <https://doi.org/10.3390/jmse7060172> (2019).
- Williams, J. G., Rosser, N. J., Hardy, R. J., Brain, M. J. & Afana, A. A. Optimising 4-D surface change detection: an approach for capturing rockfall magnitude–frequency. *Earth Surf. Dyn.* **6**, 101–119, <https://doi.org/10.5194/esurf-6-101-2018> (2018).
- Vos, S. E., Lindenbergh, R. & Vries, S. de. Coastscan: Continuous monitoring of coastal change using terrestrial laser scanning. *Proceedings of the 8th International Conference on Coastal Dynamics, Helsingør, Denmark*, <https://www.semanticscholar.org/tudelft.idm.oclc.org/paper/Coastscan%3A-Continuous-monitoring-of-coastal-change-Vos-Lindenbergh/9fadf0aa4e7b9b2316f2d7532018de73e377b9e5> (2017).
- Anders, K. *et al.* High-Frequency 3D Geomorphic Observation Using Hourly Terrestrial Laser Scanning Data Of A Sandy Beach. *ISPRS Ann. Photogramm. Remote Sens. Spat. IV-2/W5*, **535**, 317–324, <https://doi.org/10.5194/isprs-annals-IV-2-W5-317-2019> (2019).
- Vos, S. E., Kuschnerus, M. & Lindenbergh, R. C. Assessing the error budget for permanent laser scanning in coastal Areas. *Proceedings of the FIG Working Week 2020, Smart Surveyors for Land and Water Management, Amsterdam, The Netherlands* (2020).

35. IEN (International Electro technical commission) 60825-1:2014. *Safety of laser products. Equipment classification and requirements*, obtainable via <https://www.nen.nl/en/nen-en-iec-60825-1-2014-en-198247> (2014).
36. Riegl, *Riegl VZ-2000 data sheet, Technical product specification*. Available on the data repository (2017), see reference 44.
37. Open weather map, Open source weather information. openweathermap.org with city-id = 2747373, Used between 12th Nov. 2016 and 25th May 2017.
38. Riegl, *Rivlib data sheet, Technical product specification*, obtainable via http://www.riegl.com/uploads/tx_pxpriegldownloads/RivLib_datasheet_2020-08-25.pdf, last visited 21-1-2021.
39. CloudCompare (version 2.10) [GPL software], obtainable from <http://www.cloudcompare.org/>, last visited 15-3-2021.
40. American Society for Photogrammetry and Remote Sensing (ASPRS), LAS Specification 1.4-R15, http://www.asprs.org/wp-content/uploads/2019/07/LAS_1_4_r15.pdf and <https://github.com/ASPRSorg/LAS>, last visited 8-3-2021.
41. Besl, P. J. & McKay, N. D. A method for registration of 3-D shapes. *IEEE Transactions on Pattern Analysis and Machine Intelligence* **14**, 239–256, <https://doi.org/10.1109/34.121791> (1992).
42. Bruijine, A. de, Buren, J. van, Kösters, A. & Marel, H. van der. *Geodetic reference frames in the Netherlands; Definition and specification of ETRS89, RD and NAP, and their mutual relationships*, Netherlands Geodetic Commission 43, Delft, 132, ISBN 90 6132291 X (2005).
43. Riegl, Riscan Pro scan software (version 2.6.4, 64 bit). Provided with the laser scanner and obtainable via Riegl, www.riegl.com, last visited 28-4-2021.
44. Vos, S. E. *et al.* A six-month high-resolution 4D geospatial stationary laser scan dataset of the Kijkduin beach dune system, The Netherlands. *PANGAEA* <https://doi.org/10.1594/PANGAEA.934058> (2021).
45. Phennigbauer, M. & Ullrich, A. Improving quality of laser scanning data acquisition through calibrated amplitude and pulse deviation measurement. *Proc. SPIE 7684, Laser Radar Technology and Applications XV*, 76841 F, <https://doi.org/10.1117/12.849641> (2010).
46. Höfle, B. & Pfeifer, N. Correction of laser scanning intensity data: Data and model-driven approaches. *ISPRS J. Photogramm. Remote Sens.* **62**, 415–433, <https://doi.org/10.1016/j.isprsjprs.2007.05.008> (2007).
47. Kaasalainen, S., Jaakkola, A., Kaasalainen, M., Krooks, A. & Kukko, A. Analysis of Incidence Angle and Distance Effects on Terrestrial Laser Scanner Intensity: Search for Correction Methods. *Remote Sens.* **3**, 2207–2221, <https://doi.org/10.3390/rs3102207> (2011).
48. Vosselman, G. & Maas, H. G. Airborne and terrestrial laser scanning. Boca Raton: (CRC Press, 2010).
49. Höfle, B., Vetter, M., Pfeifer, N., Mandlbürger, G. & Stötter, J. Water surface mapping from airborne laser scanning using signal intensity and elevation data. *Earth Surf. Processes Landforms* **34**, 1635–1649, <https://doi.org/10.1002/esp.1853> (2009).
50. Shore, Half yearly survey of the sand engine, The Netherlands. Survey date 24th–26th January 2017. Data available on request.
51. RWS (Rijkswaterstaat, Ministry of Public Works), data obtainable via https://www.rijkswaterstaat.nl/apps/geoservices/geodata/dmc/hoogte_2017/kust_2017_laz, last visited 15-3-2021.
52. Ruyter, G. *et al.* Macrotidal Beach Monitoring (Belgium) using Hypertemporal Terrestrial Lidar, *Proceedings of the FIG Working Week 2020, Smart Surveyors for Land and Water Management*, Amsterdam, The Netherlands (2020).
53. Soudarissanane, S., Lindenbergh, R. C., Menenti, M. & Teunissen, P. Scanning geometry: Influencing factor on the quality of terrestrial laser scanning points. *ISPRS J. Photogramm. Remote Sens.* **66**, 389–399, <https://doi.org/10.1016/j.isprsjprs.2011.01.005> (2011).
54. James, L. A., Hodgson, M. E., Ghoshal, S. & Latiolais, M. M. Geomorphic change detection using historic maps and DEM differencing: The temporal dimension of geospatial analysis. *Geomorphology* **137**, 181–198, <https://doi.org/10.1016/j.geomorph.2010.10.039> (2012).
55. Lague, D., Brodu, N. & Leroux, J. Accurate 3D comparison of complex topography with terrestrial laser scanner: Application to the Rangitikei canyon (N-Z). *ISPRS J. Photogramm. Remote Sens.* **82**, 10–26, <https://doi.org/10.1016/j.isprsjprs.2013.04.009> (2013).
56. Jin, J. *et al.* Monitoring spatiotemporal variation in beach surface moisture using a long-range terrestrial laser scanner. *ISPRS J. Photogramm. Remote Sens.* **173**, 195–208, <https://doi.org/10.1016/j.isprsjprs.2021.01.011> (2021).
57. Di Biase, V., Hanssen, R. F. & Vos, S. E. Sensitivity of Near-Infrared Permanent Laser Scanning Intensity for Retrieving Soil Moisture on a Coastal Beach: Calibration Procedure Using *In Situ* Data. *Remote Sens.* **13**, 1645, <https://doi.org/10.3390/rs13091645> (2021).
58. Smit, Y., Ruessink, G., Brakenhoff, L. B. & Donker, J. J. Measuring spatial and temporal variation in surface moisture on a coastal beach with a near-infrared terrestrial laser scanner. *Aeolian Res.* **31**, 19–27, <https://doi.org/10.1016/j.aeolia.2017.07.004> (2018).
59. Rusu, R. B. & Cousins, S. 3D is here: Point Cloud Library (PCL). *IEEE International Conference on Robotics and Automation* (2011).
60. Rossum, G. van & Drake, F. L. Python 3 Reference Manual. (Scotts Valley, CA: CreateSpace, 2009).
61. MATLAB, version 9.9 (R2020a). Natick, Massachusetts: The MathWorks Inc, (2021).
62. LAStools, Efficient LiDAR Processing Software (academic version), <http://rapidlasso.com/LAStools>, last visited 2-2-2021.
63. Pfeifer, N., Mandlbürger, G., Otepka, J. & Karel, W. OPALS - A framework for Airborne Laser Scanning data analysis. *Comput. Environ Urban Syst.* **45**, 125–136, <https://doi.org/10.1016/j.compenvurbys.2013.11.002> (2014).
64. Kuschnerus, M., Lindenbergh, R. C. & Vos, S. E. Coastal change patterns from time series clustering of permanent laser scan data. *Earth Surf. Dyn.* **9**, 89–103, <https://doi.org/10.5194/esurf-9-89-2021> (2021).
65. Anders, K. *et al.* Fully automatic spatiotemporal segmentation of 3D LiDAR time series for the extraction of natural surface changes. *ISPRS J. Photogramm. Remote Sens.* **173**, 297–308, <https://doi.org/10.1016/j.isprsjprs.2021.01.015> (2021).
66. KNMI (Koninklijk Nederlands Meteorologisch Instituut, The Netherlands). Weather data at Hoek van Holland (station 330), The Netherlands. Data available via [44]. <https://www.knmi.nl>, last visited 22-3-2022.
67. RWS (2) (Rijkswaterstaat, Ministry of Public Works, The Netherlands). Wave information from 'Europort' and 'IJgeul Munitiestort 1' wave buoys on the North Sea, Data available via [44]. <https://www.rws.nl>, last visited 22-3-2022.
68. Cowell, P. J. *et al.* The Coastal-Tract (Part 1): A Conceptual Approach to Aggregated Modeling of Low-Order Coastal Change. *J. Coastal Res.* **19**, 812–827 (2003).

Acknowledgements

The work in this article was partly financed by the ERC-Advanced grant 291206-Nearshore Monitoring and Modelling, the CoastScan project 2018/STW/00505023, German Universities Excellence Initiative, DFG grant GSC 220 and contract 4500277210/31141555 of Rijkswaterstaat, Ministry of Infrastructure and Water Management. The authors wish to thank the owner and manager of the Hotel NH Atlantic Den Haag (www.nh-hotels.nl) for supporting the research by allowing the use of the hotel infrastructure for the permanent TLS setup. Additional thanks go to ir. J. Baars and B. Munting of Baars-CIPRO (www.baars-cipro.nl) for construction of the measuring frame and financial and operational support.

Author contributions

Conceptualization, S.V., R.L., S.A. and S.d.V.; methodology S.V., K.A. and M.K.; software, S.V. and K.A.; validation, S.V., K.A. and M.K.; data curation, S.V. and K.A.; writing—original draft preparation, S.V., K.A. and M.K.; writing—review and editing, S.V., K.A., M.K., R.L., B.H. and S.d.V.; visualization, S.V., K.A. and M.K.; supervision, R.L., B.H. and S.d.V.; project administration, R.L. and S.d.V.; funding acquisition, S.V., R.L., S.A. and S.d.V.

Competing interests

The authors declare no conflict of interest for this article. The funding agencies had no role in the design of the study, the data processing and writing or in the decision to publish the results.

Additional information

Correspondence and requests for materials should be addressed to S.V.

Reprints and permissions information is available at www.nature.com/reprints.

Publisher's note Springer Nature remains neutral with regard to jurisdictional claims in published maps and institutional affiliations.



Open Access This article is licensed under a Creative Commons Attribution 4.0 International License, which permits use, sharing, adaptation, distribution and reproduction in any medium or format, as long as you give appropriate credit to the original author(s) and the source, provide a link to the Creative Commons license, and indicate if changes were made. The images or other third party material in this article are included in the article's Creative Commons license, unless indicated otherwise in a credit line to the material. If material is not included in the article's Creative Commons license and your intended use is not permitted by statutory regulation or exceeds the permitted use, you will need to obtain permission directly from the copyright holder. To view a copy of this license, visit <http://creativecommons.org/licenses/by/4.0/>.

© The Author(s) 2022