

Jacobihofje
Graduation

During my graduation thesis and design project I tried to create a social and physical environment for adolescents and young adults suffering from a life-threatening disease. The project focusses on reintegrating the 'patient' through functional and social interventions as well as architectural and spatial expression. Beginning with the function of a hospice I explored the different needs and wishes of the patients and their families.

A broad range of small scale care facilities, serving the different phases of the palliative process, support patients and their surroundings to live a 'normal' life. Public functions offer a place where insights can be shared and peers can interact and find support in each other. Building upon the architecture of the historic city centre and tradition of 'hofjes' these values are emphasized and help to embed the patient into the city socially and physically.

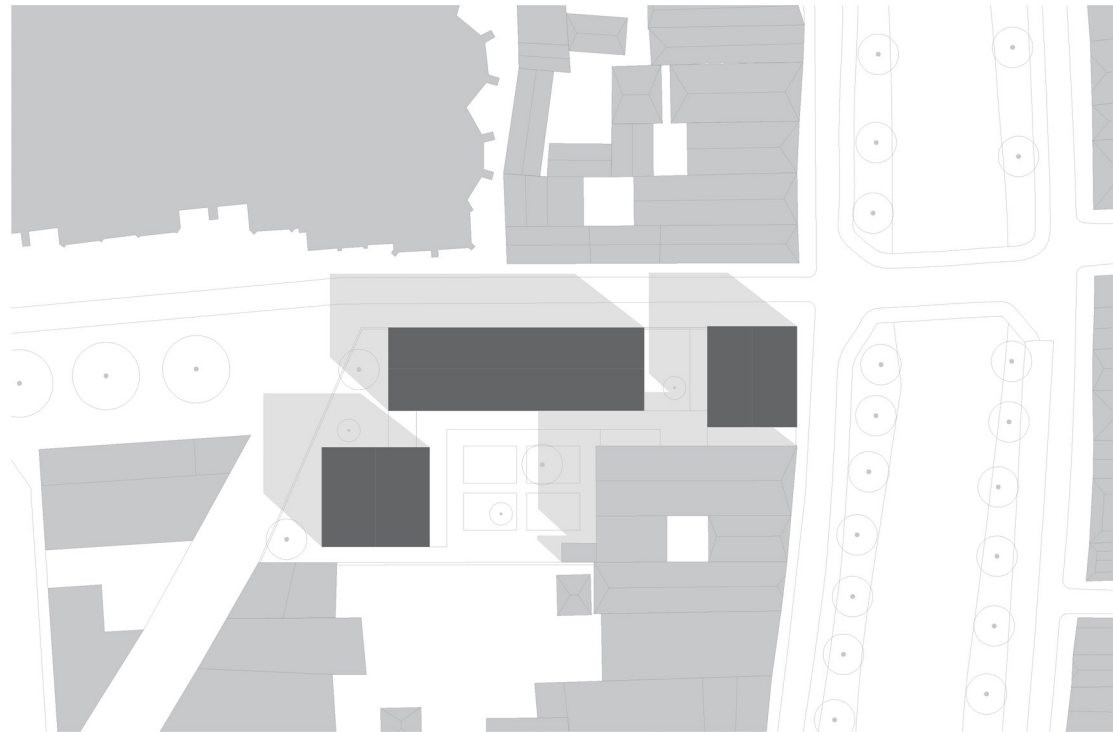
Type: healthcare
Studio: graduation (explore lab)



Historic image of Jacobikerkhof Utrecht (1968)



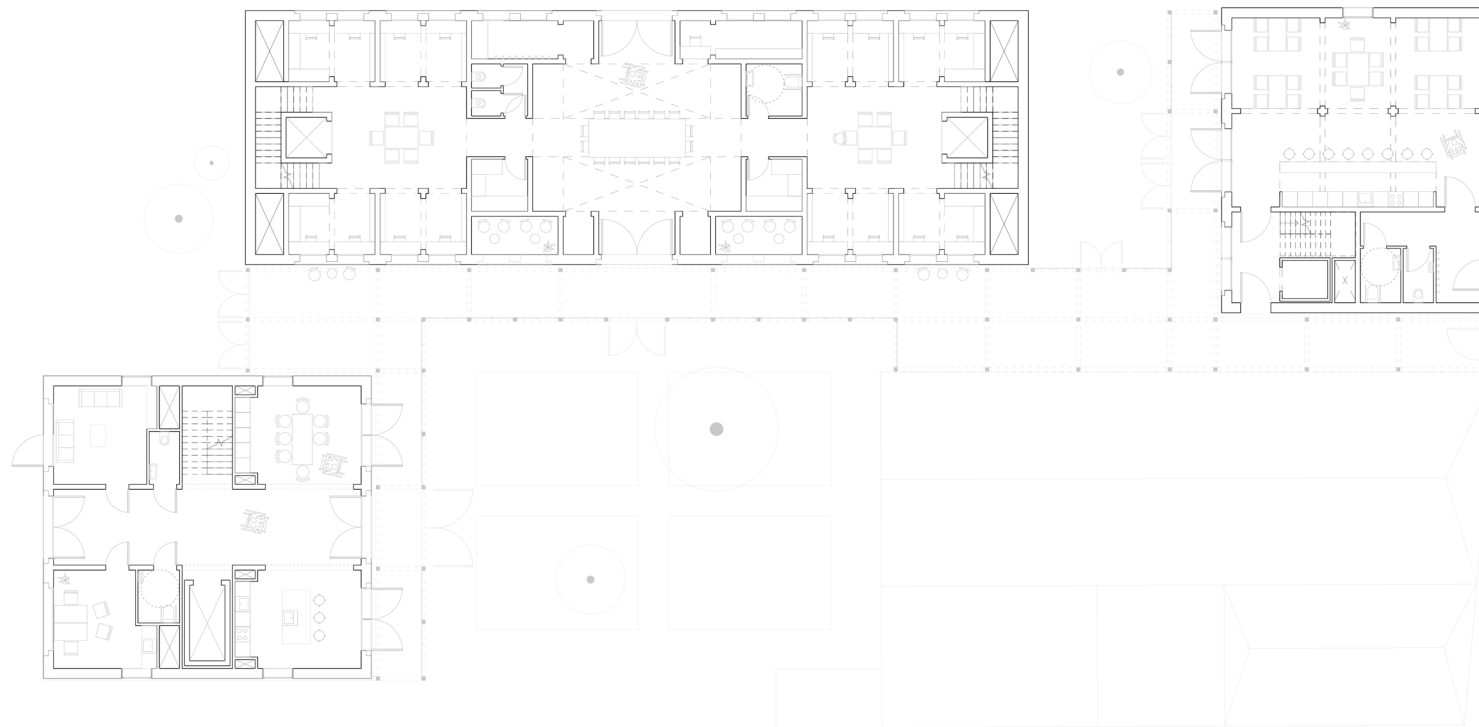
Oudegracht Utrecht (1985) with the empty plot on the right



Design on site, Wijk C Utrecht



Mass model



floorplan of the three care facilities and gardens (hof)



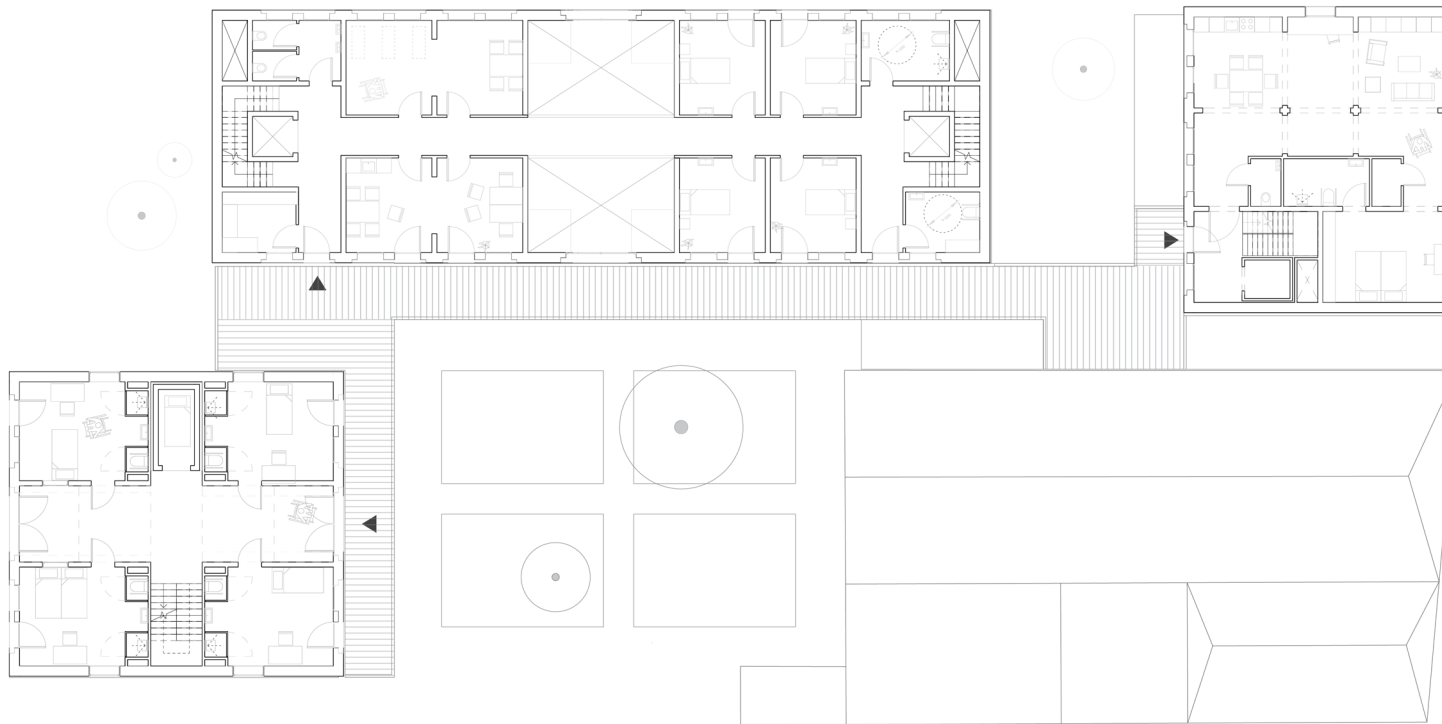
The inner-garden as shared space accessible through the sun lounge



The elevation towards the historic canal of Utrecht



The different scales of the care facilities



the gallery connects the hospice (left), care centre for treatment (middle) and care residences (right) on the first level



the gallery on the first floor functions as a connection of care



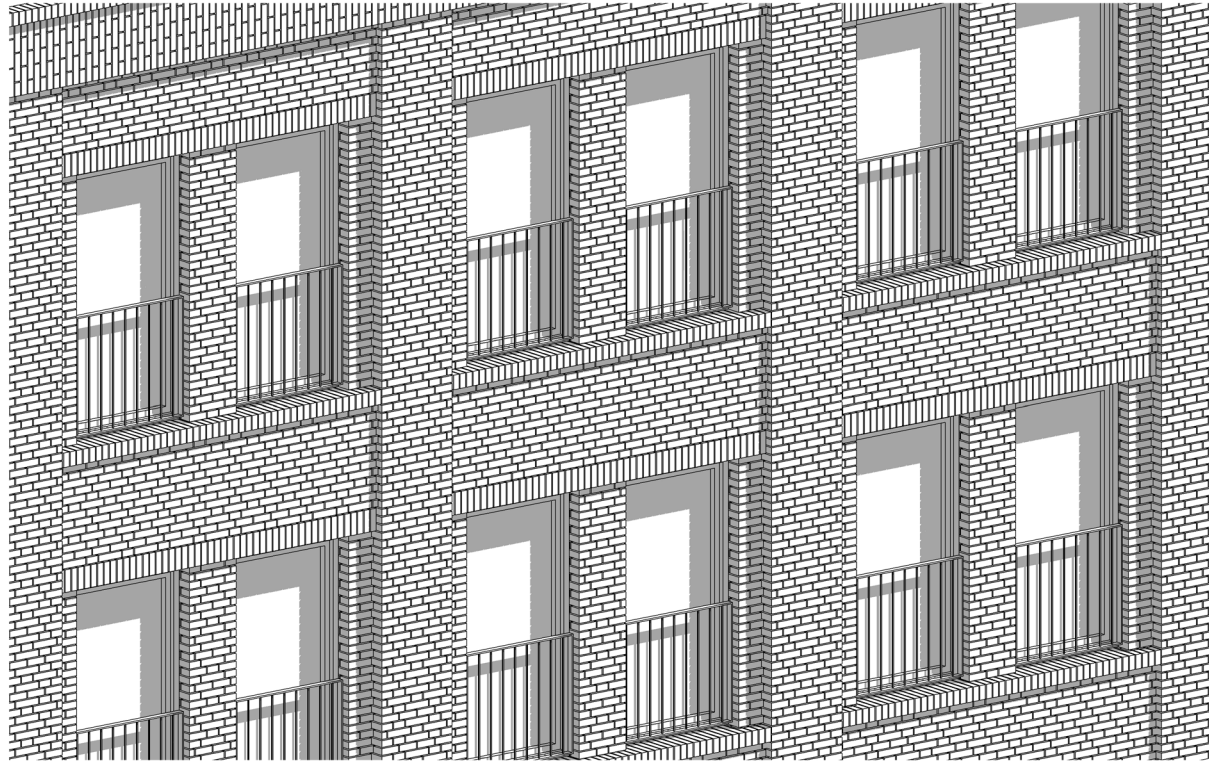
The building formation (re)creates historic and new sights towards and from the city



view from the hospice towards the different buildings on site and 'hof' garden



Elevations of the 'hof' garden and gallery / sun lounge



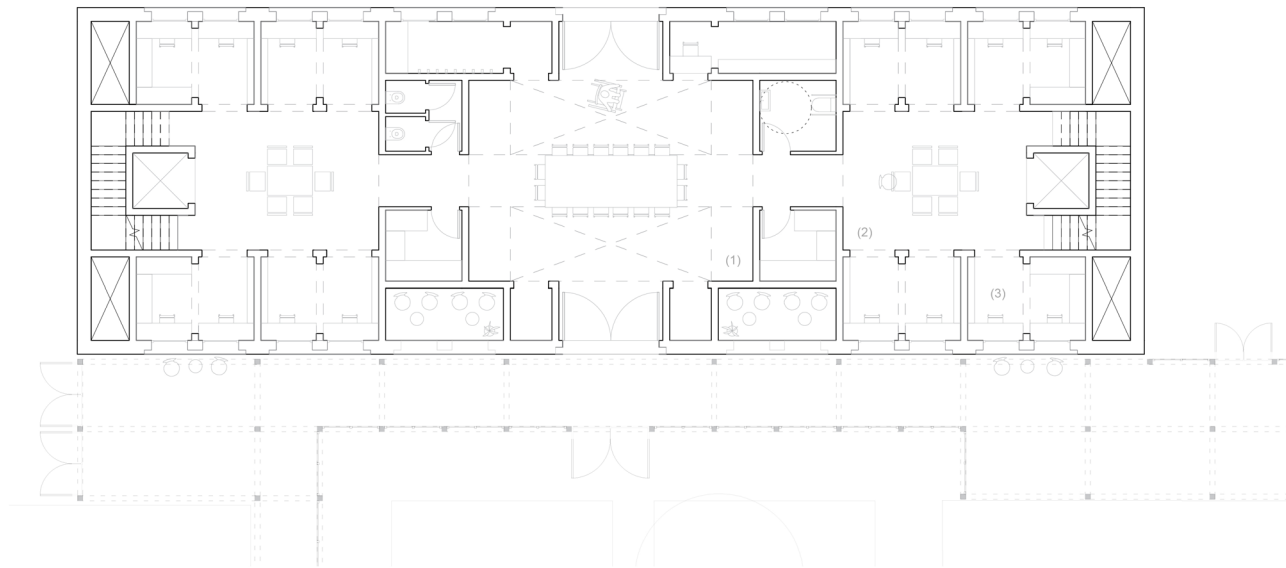
A fragment of the facade showing the repetitive element, brickwork and created shadows



gypsum model facade



the shadows of the repetitive elements that form the facade



ground floorplan of the public care facility used for family gatherings (1), workshops (2) and personal projects (3)



Central family hall



Communal workshop space



Smaller cells for private work surround the workshop space



different paths and spaces highlighted through material use



The hallway in the hospice building becomes usable space



a private patient room for hospice care