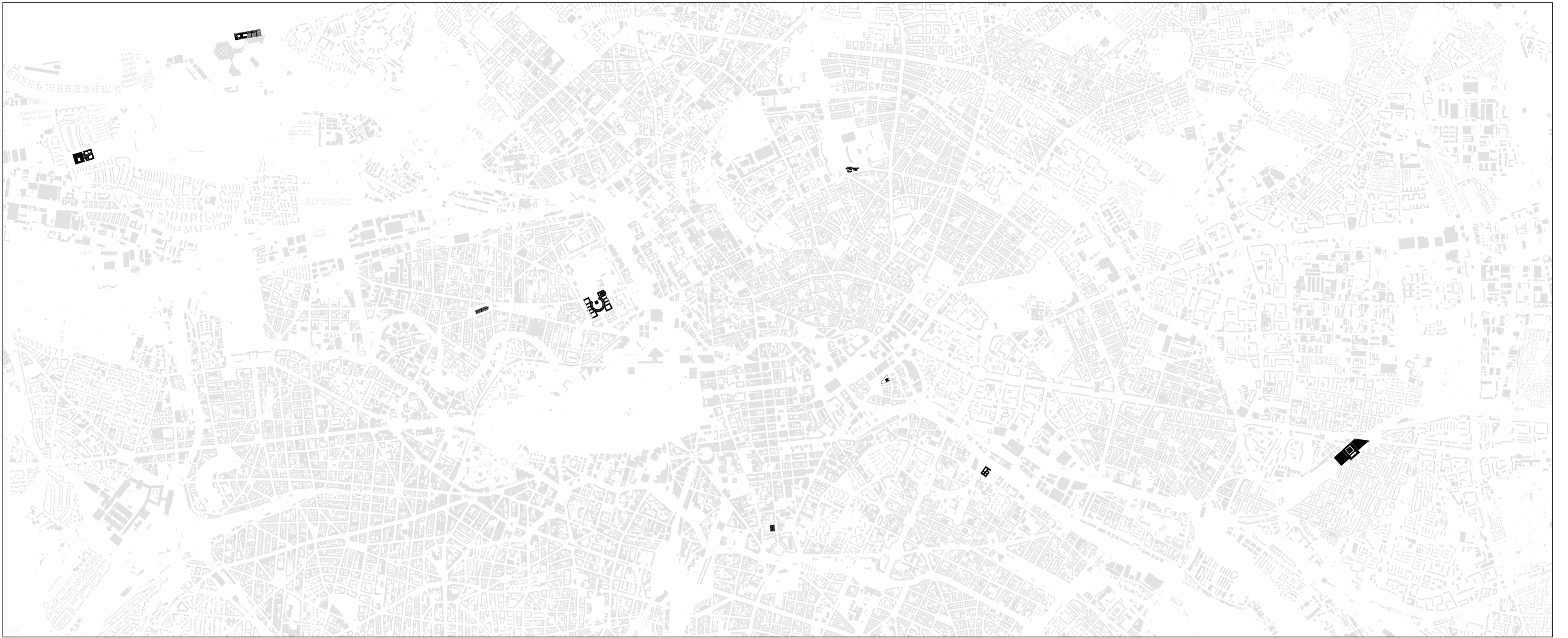


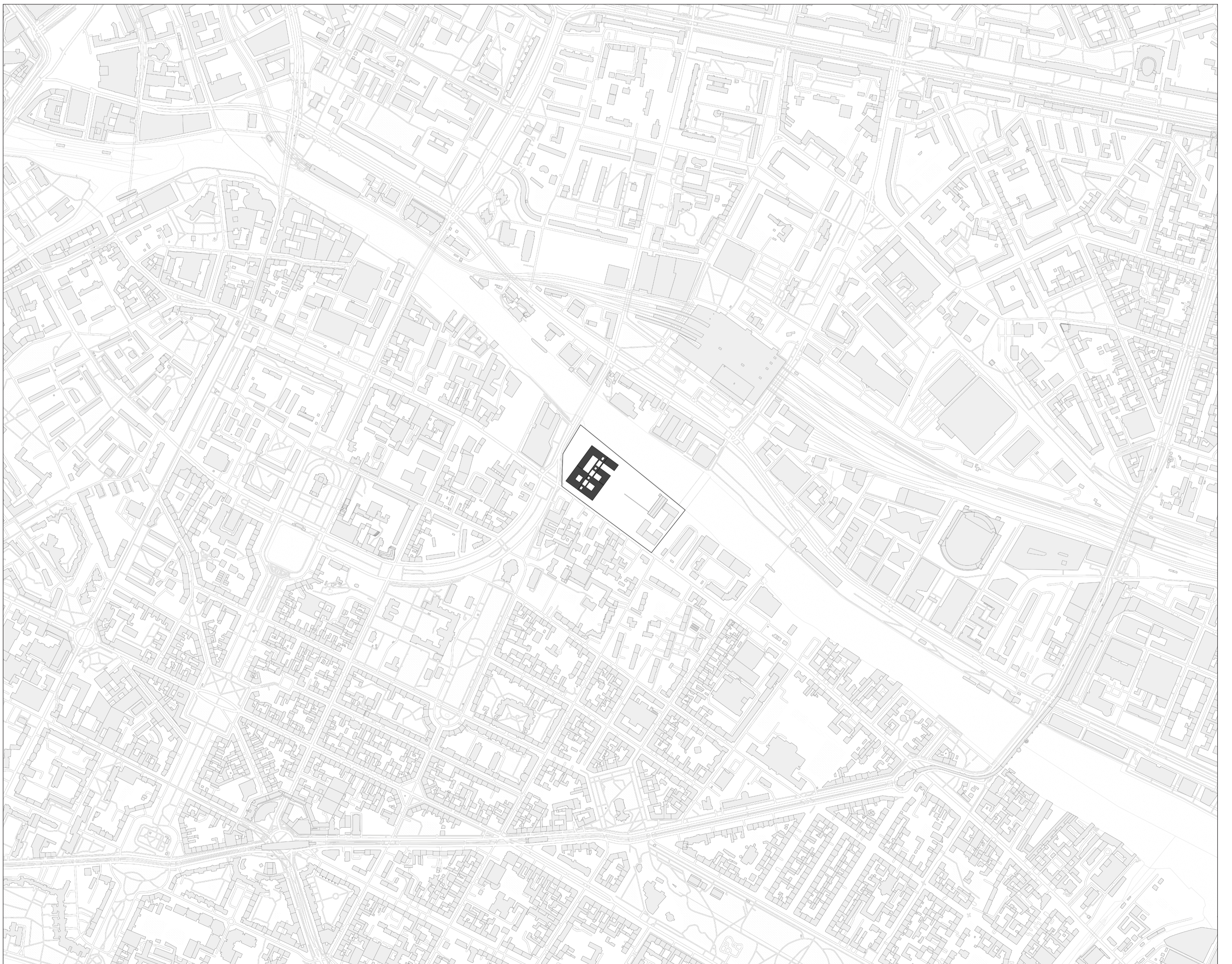
THE ARRIVAL CITY

# ARCHITECTURE FOR THE DISPLACED

*One building representing the resettlement procedure in the arrival city of Berlin*



0 500 1000 2500 5000

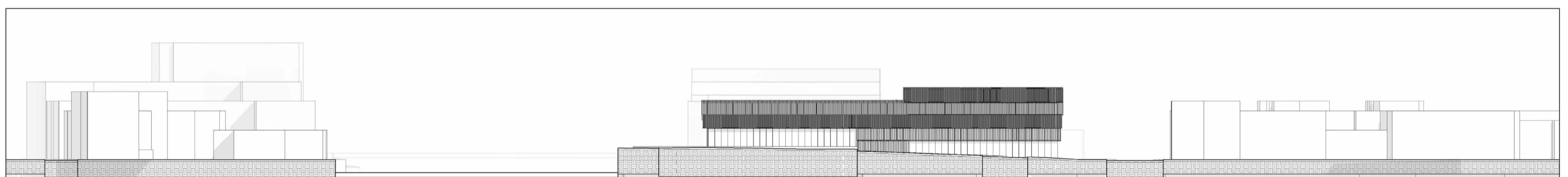
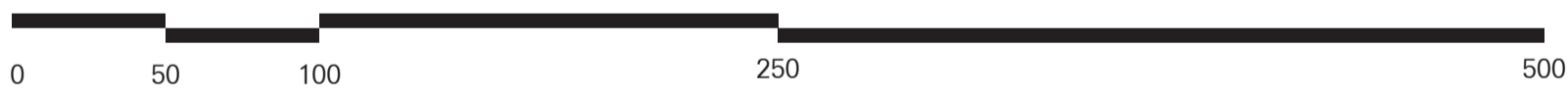
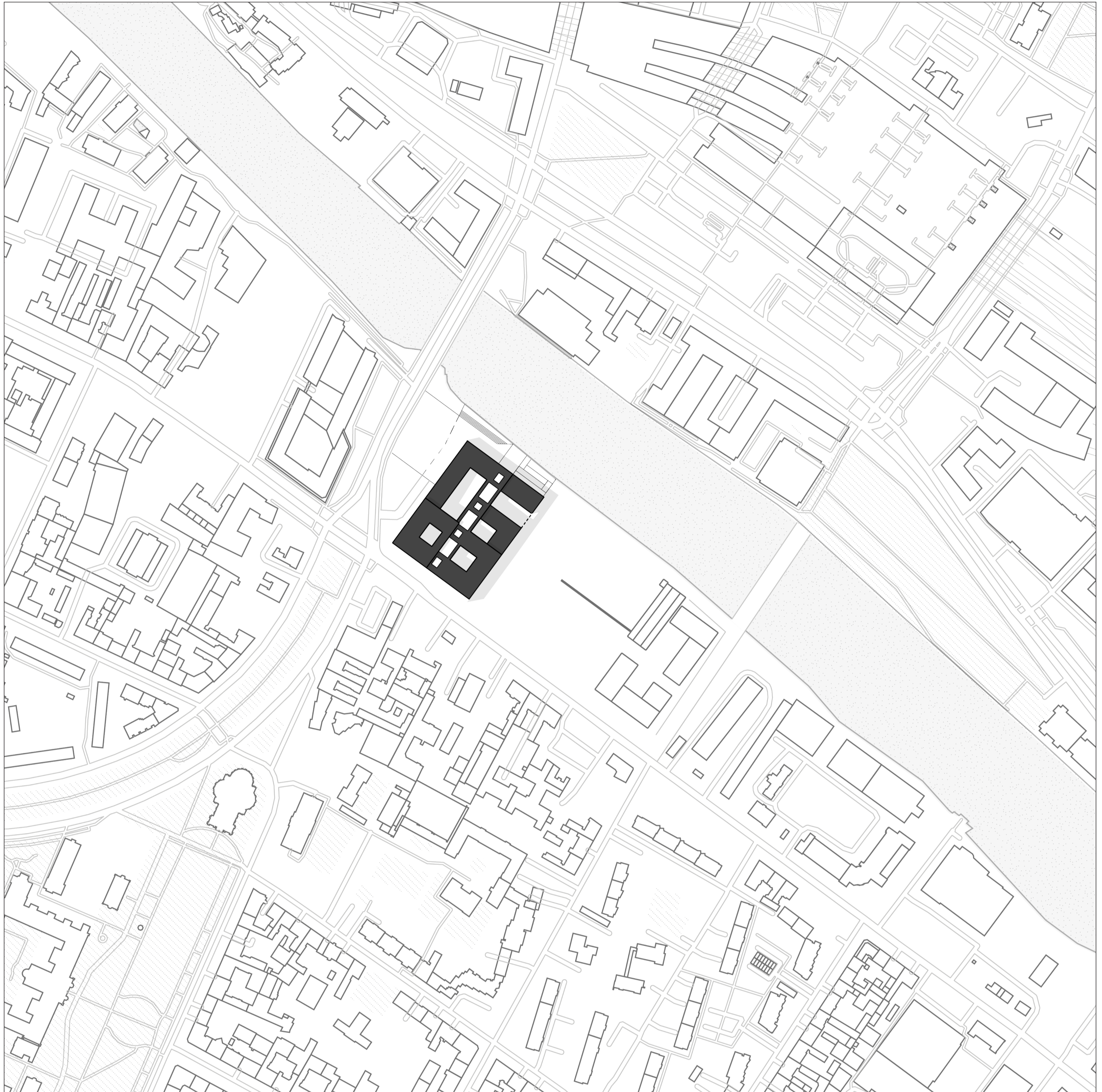


0 100 200 500 1000



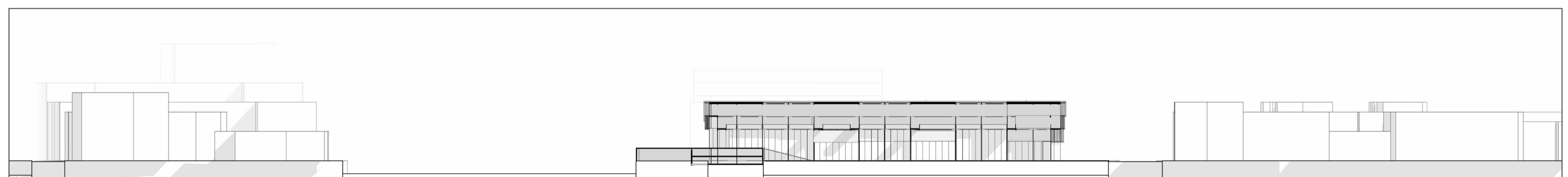
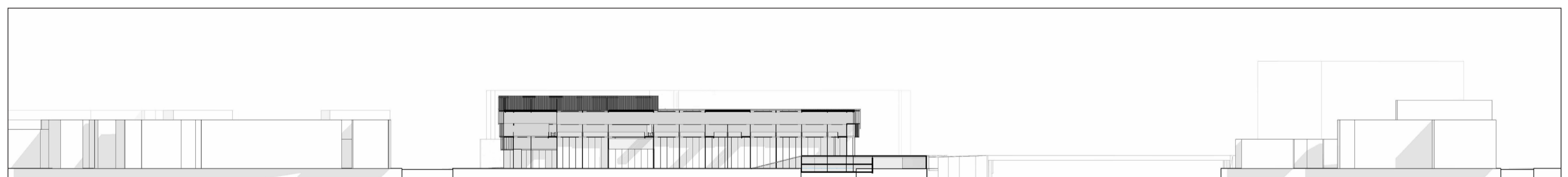
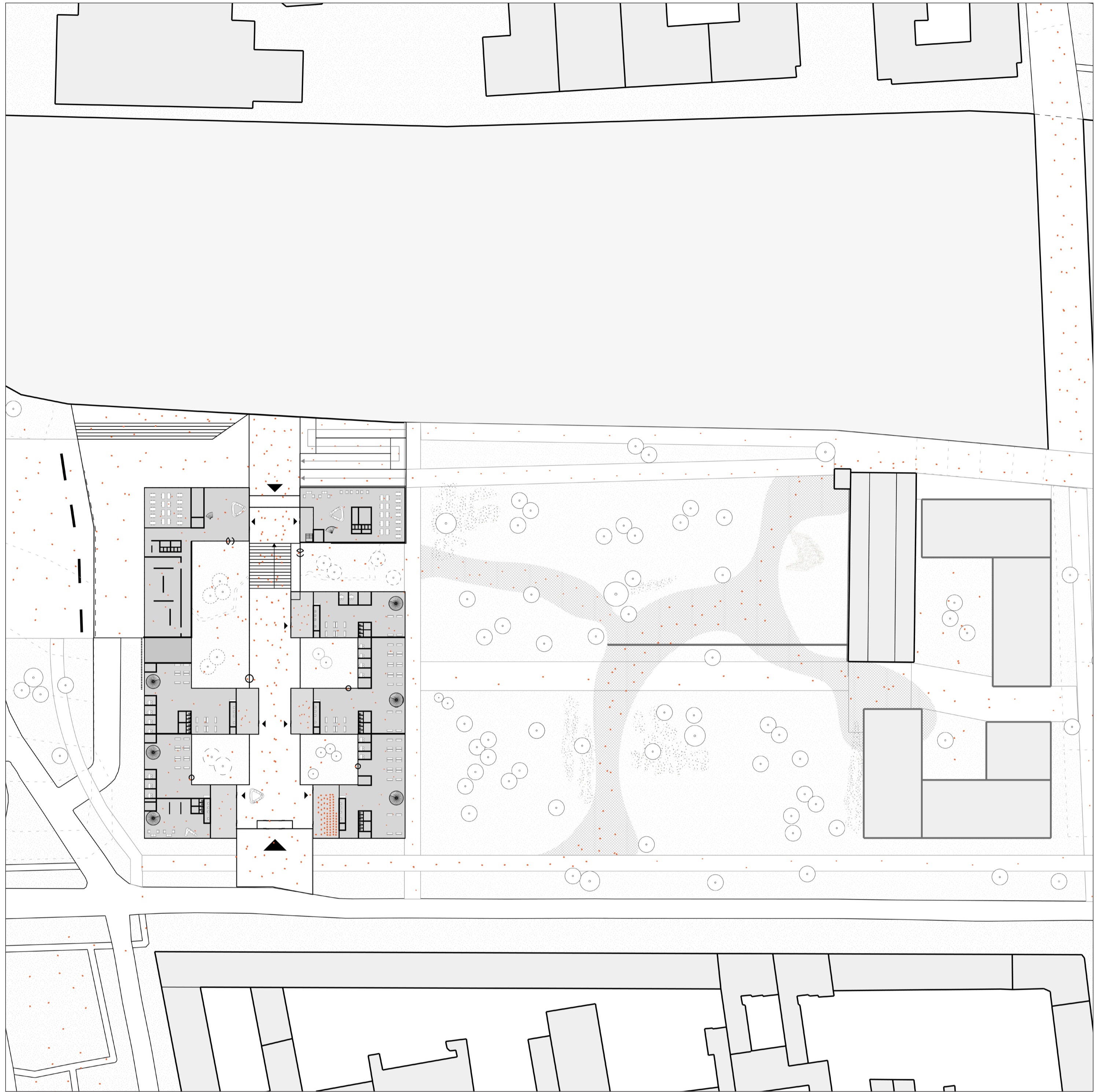
# ARCHITECTURE FOR THE DISPLACED

*One building representing the resettlement procedure in the arrival city of Berlin*



# ARCHITECTURE FOR THE DISPLACED

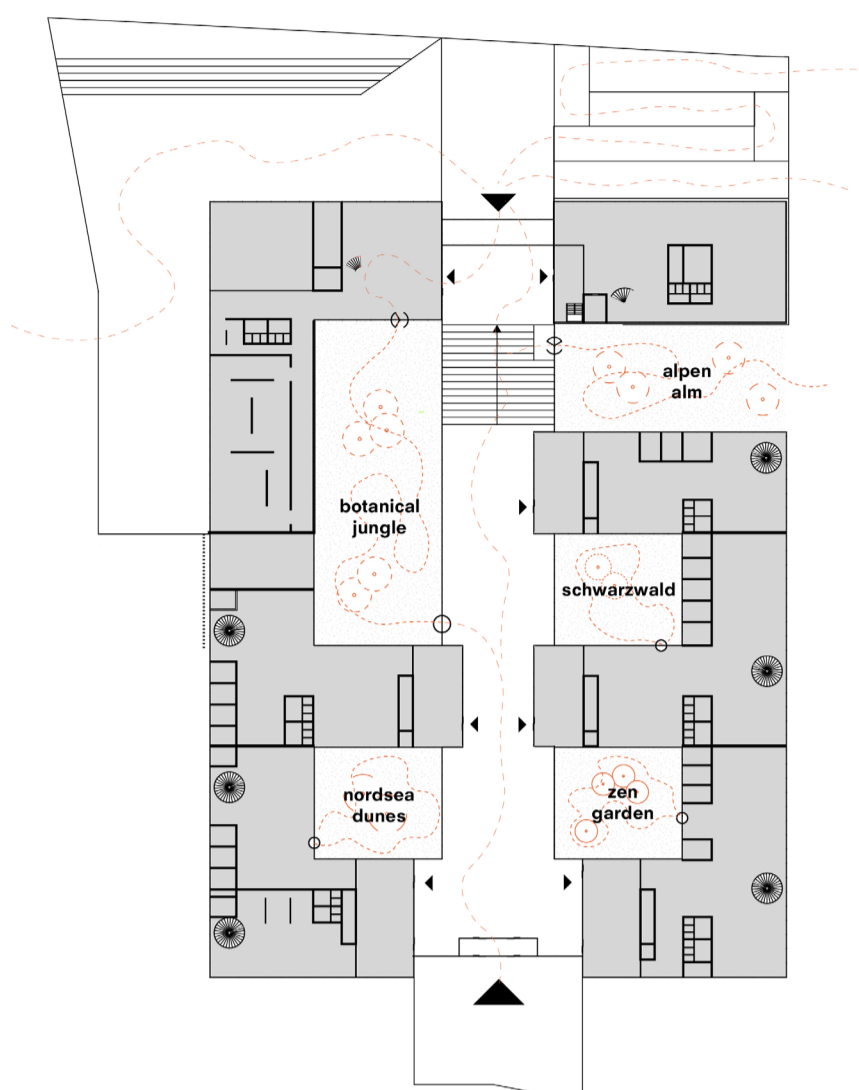
*One building representing the resettlement procedure in the arrival city of Berlin*



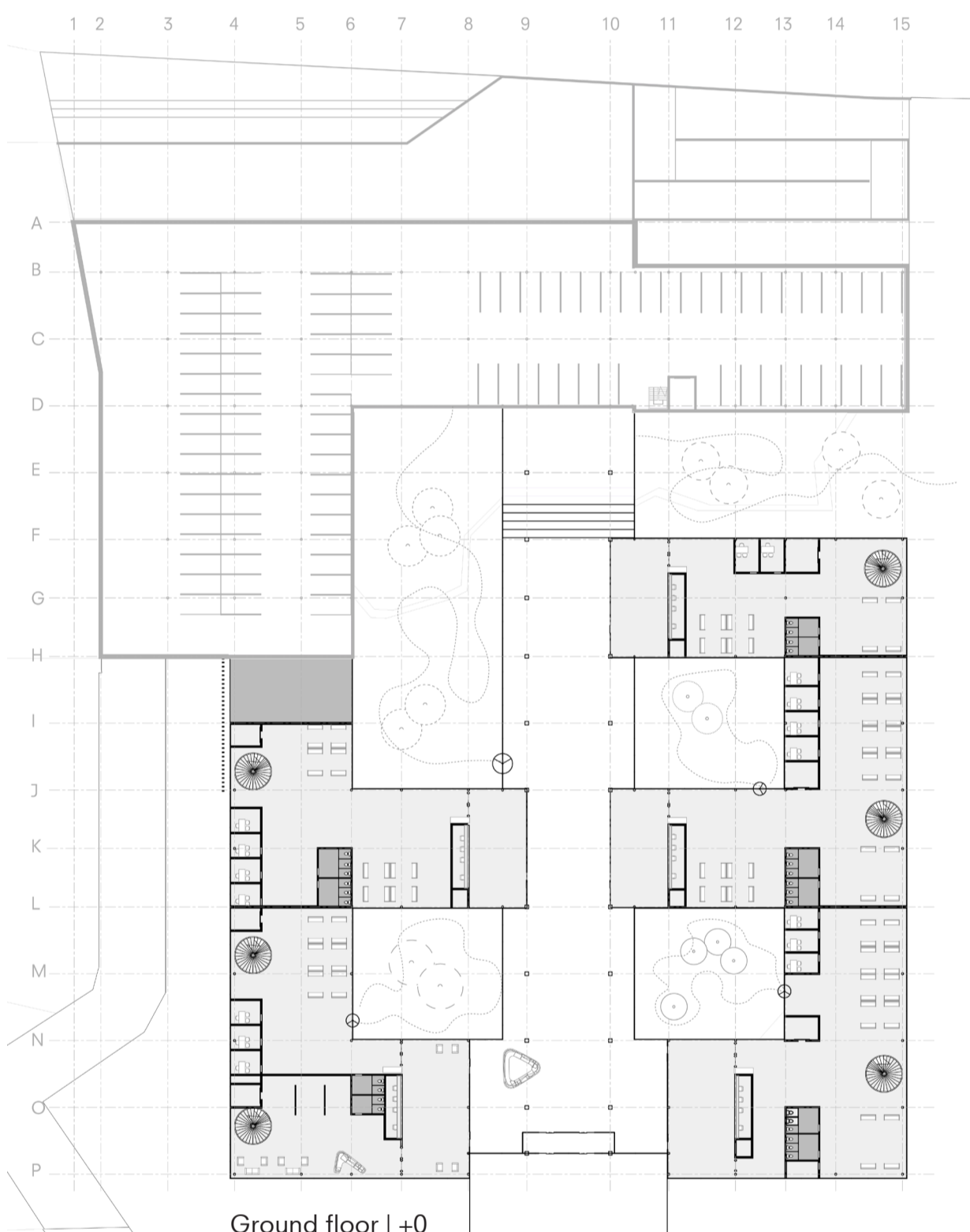
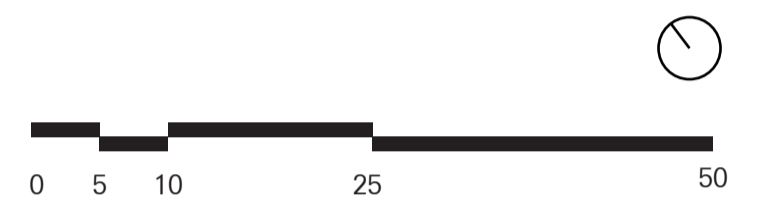
THE ARRIVAL CITY

ARCHITECTURE FOR THE DISPLACED

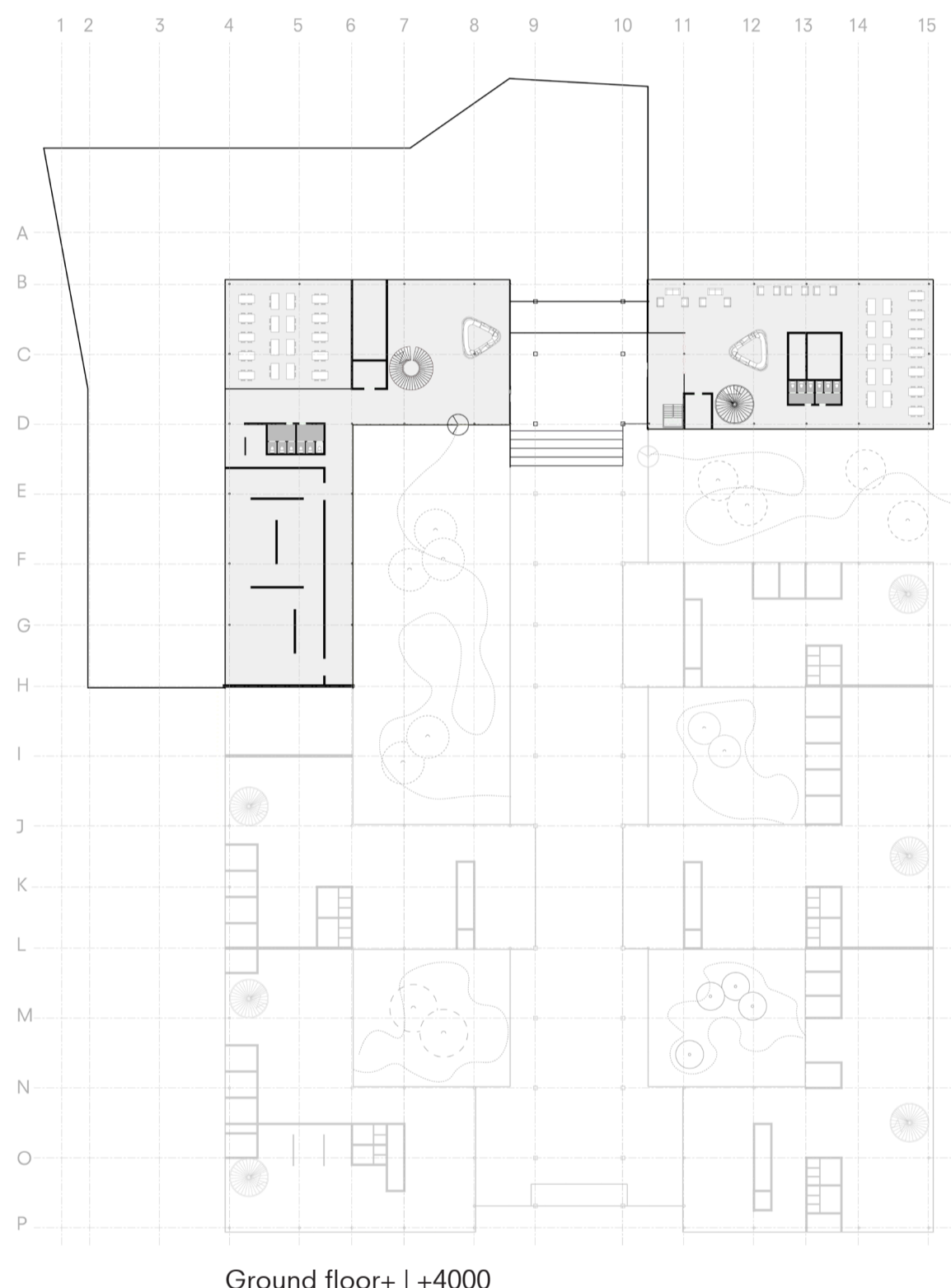
One building representing the resettlement procedure in the arrival city of Berlin



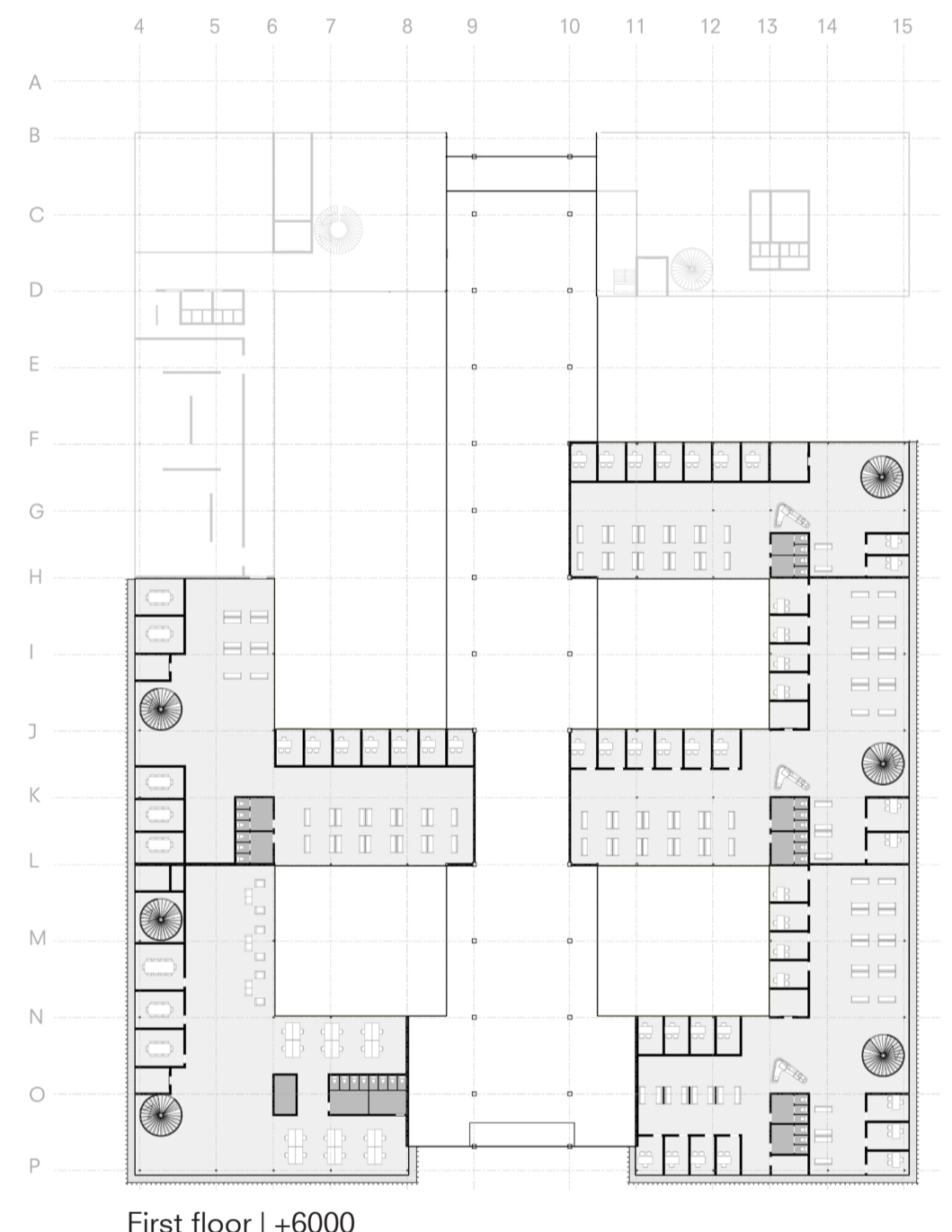
Combined ground floor



Ground floor I +0



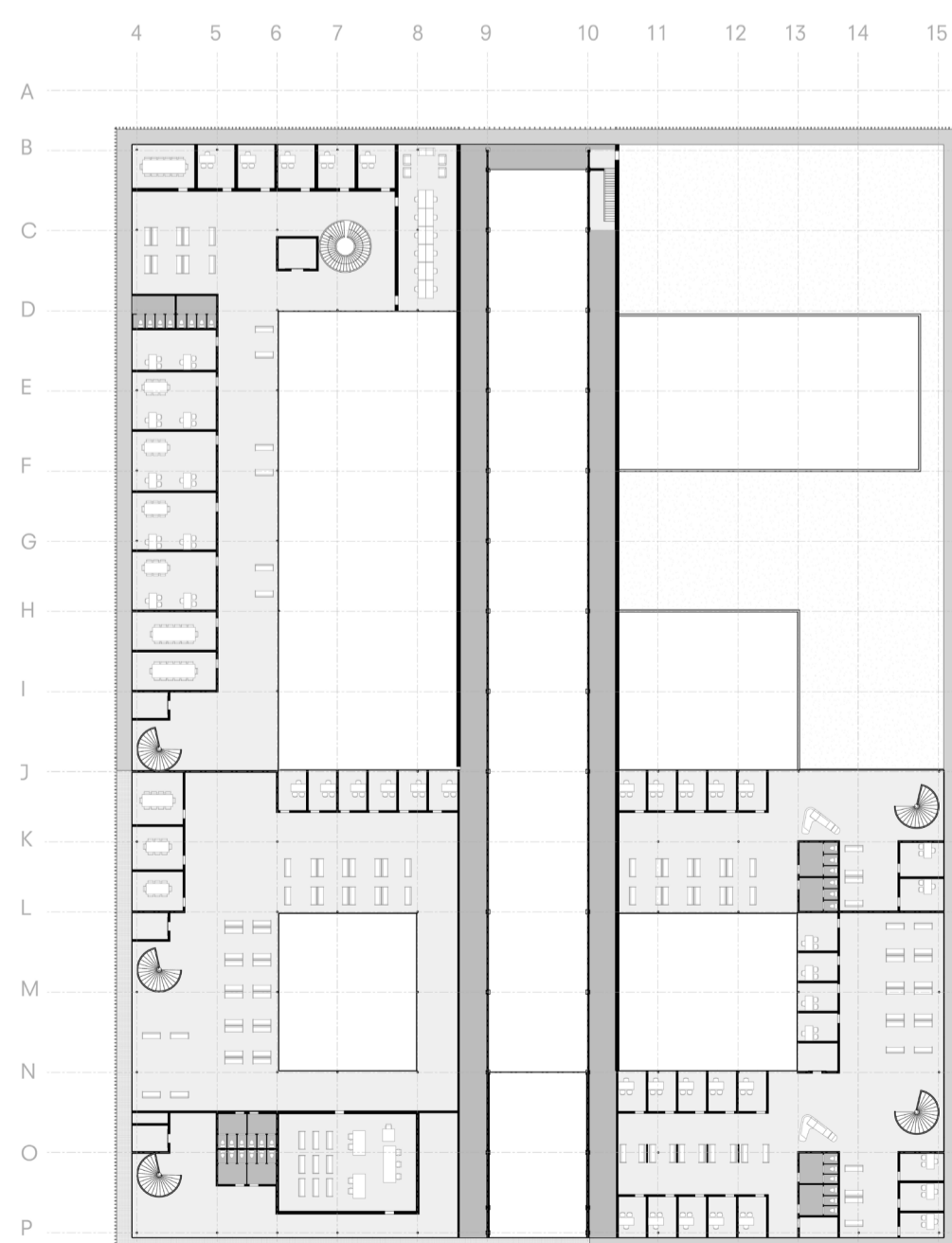
Ground floor+ I +4000



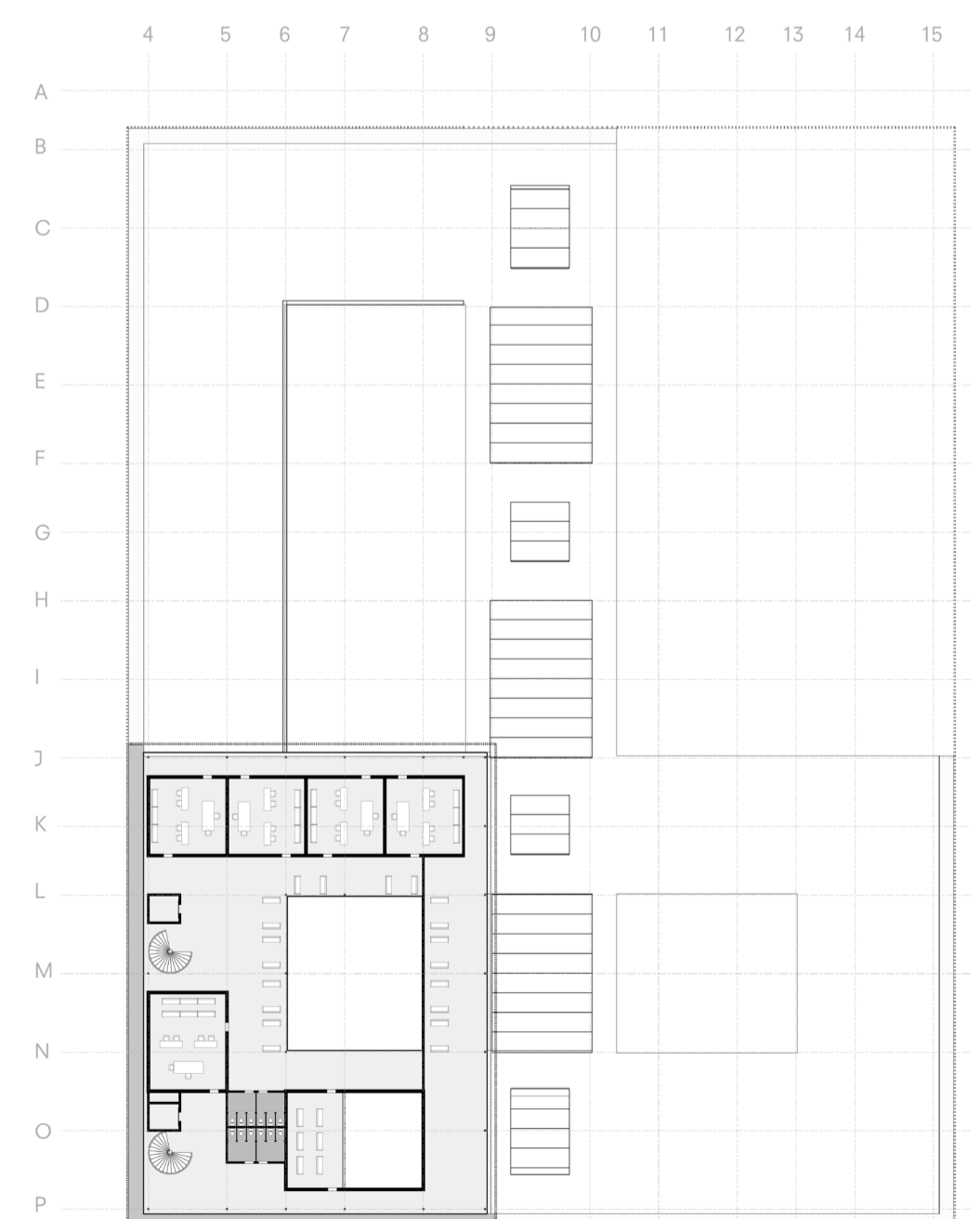
First floor I +6000



Second floor I +10000

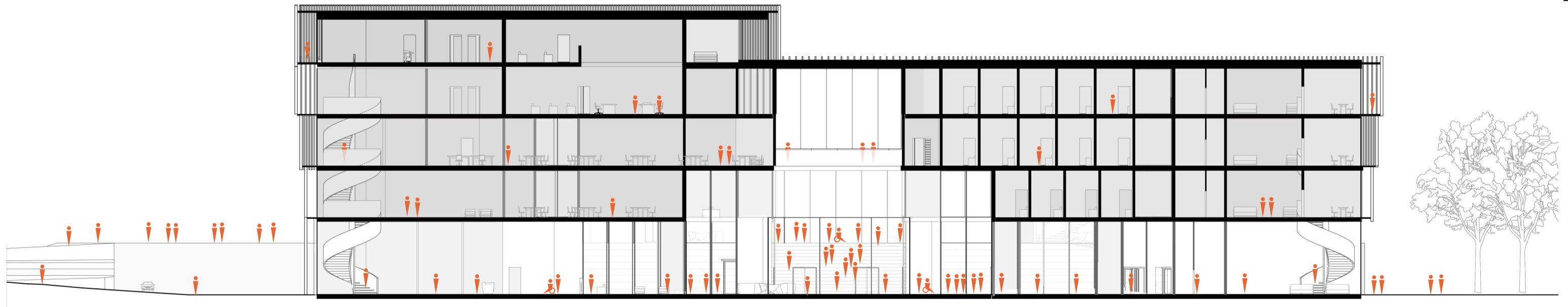
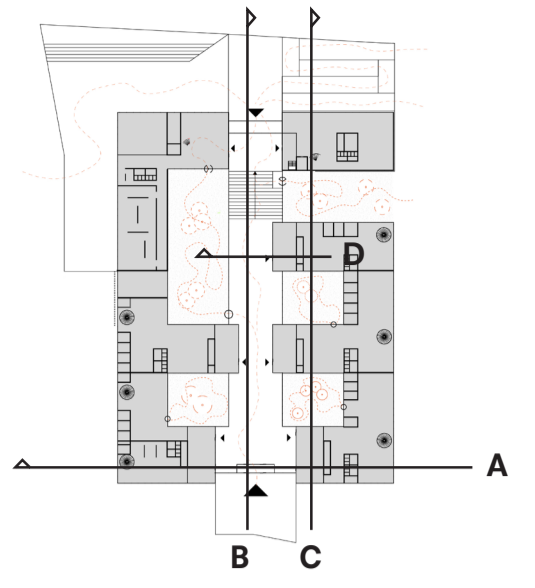


Third floor I +14000

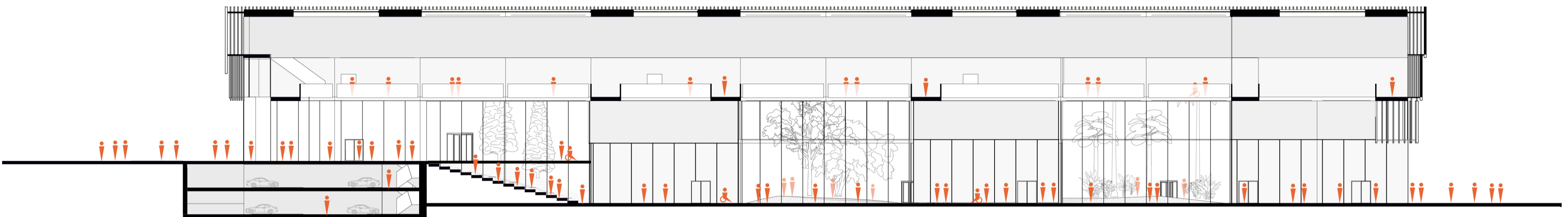


Fourth floor I +18000

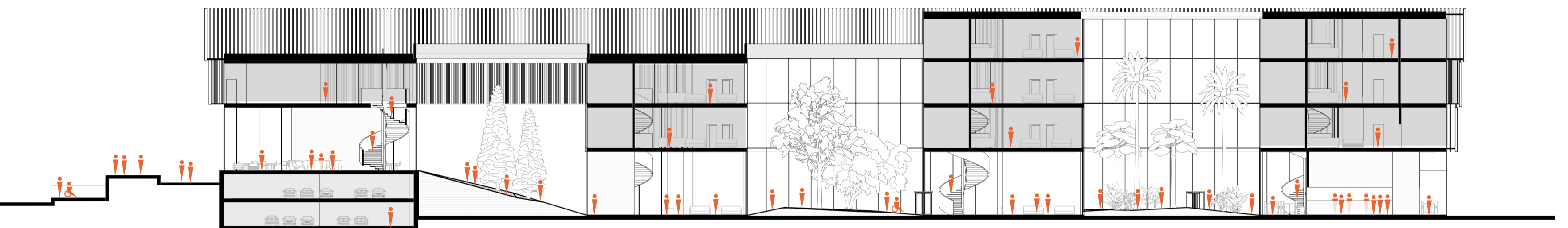
THE ARRIVAL CITY  
**ARCHITECTURE FOR THE DISPLACED**  
*One building representing the resettlement procedure in the arrival city of Berlin*



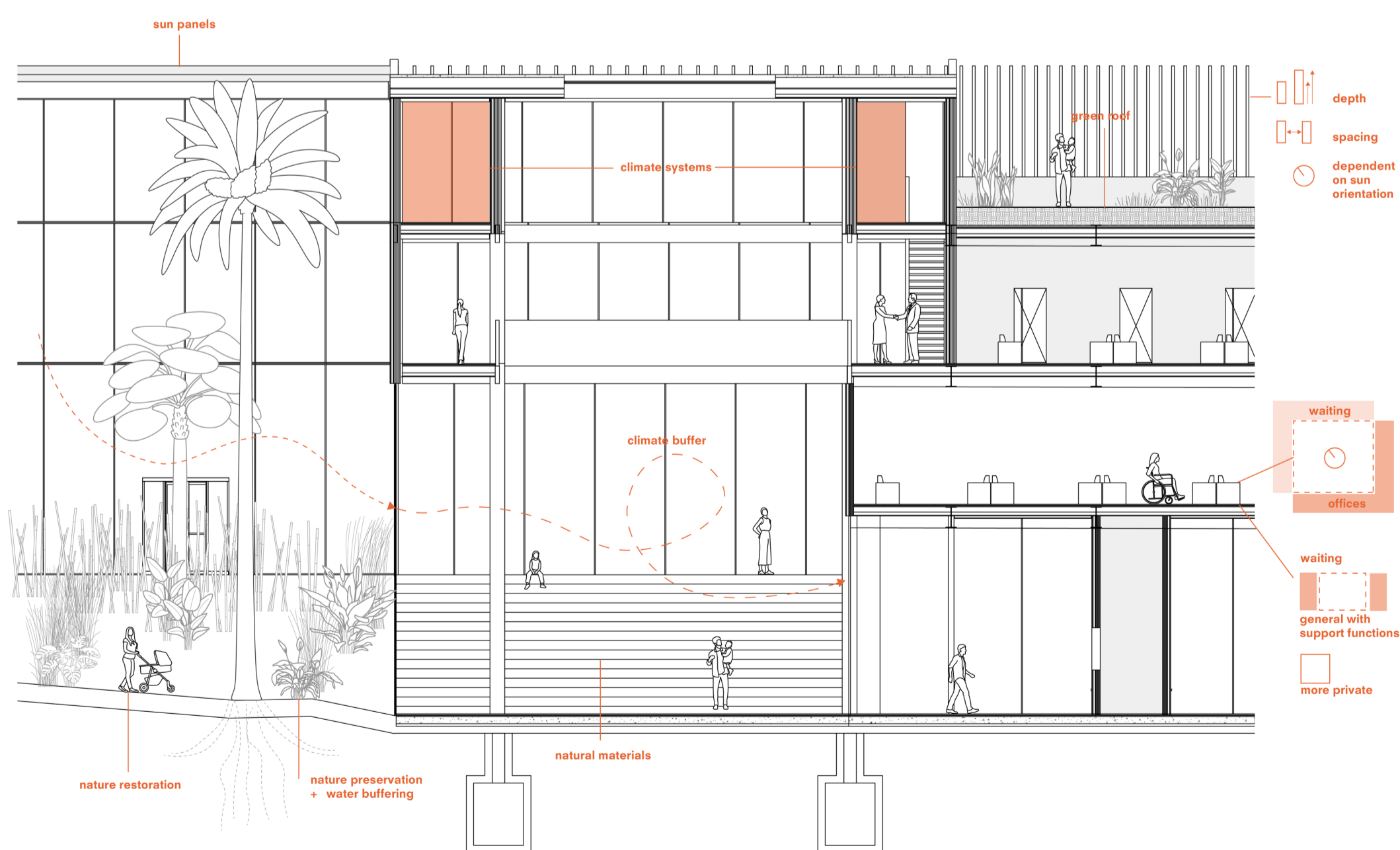
Section A | West-East | court - entrance - arrival



Section B | North-South | inside street



Section C | North-South | employees - return - interview - arrival



Section D | climate section

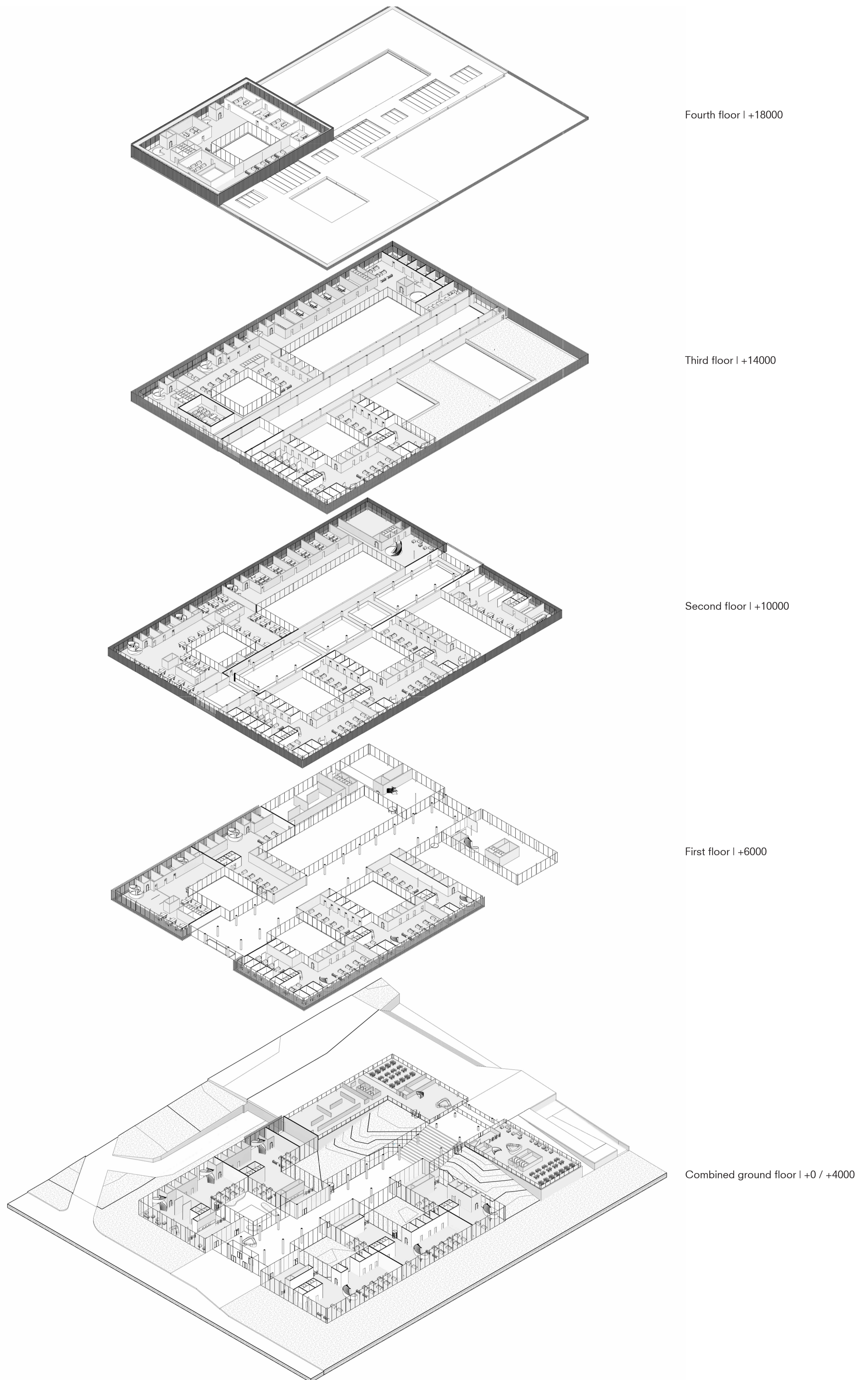
THE ARRIVAL CITY  
**ARCHITECTURE FOR THE DISPLACED**  
*One building representing the resettlement procedure in the arrival city of Berlin*



THE ARRIVAL CITY

**ARCHITECTURE FOR THE DISPLACED**

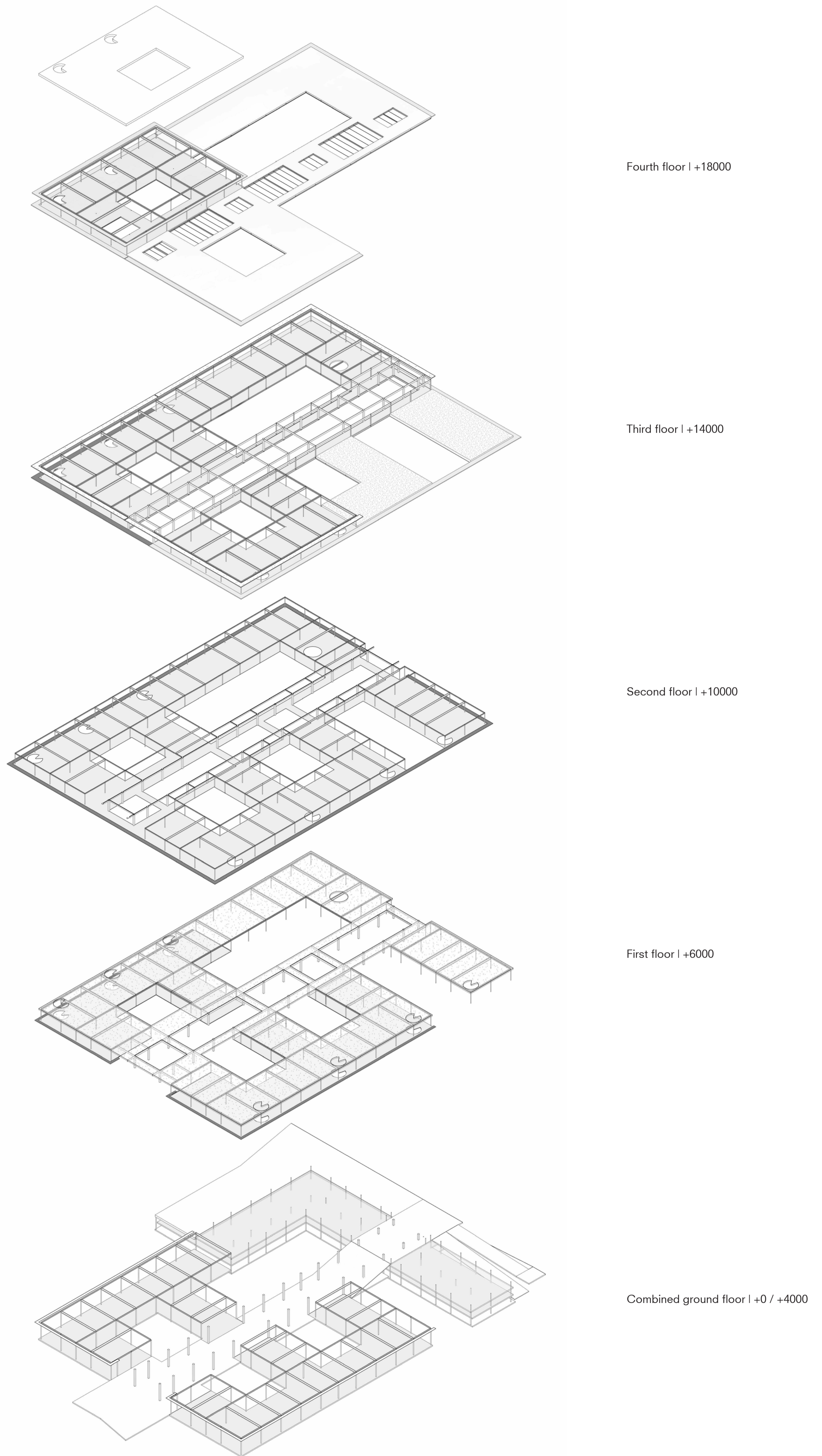
*One building representing the resettlement procedure in the arrival city of Berlin*



THE ARRIVAL CITY

**ARCHITECTURE FOR THE DISPLACED**

*One building representing the resettlement procedure in the arrival city of Berlin*

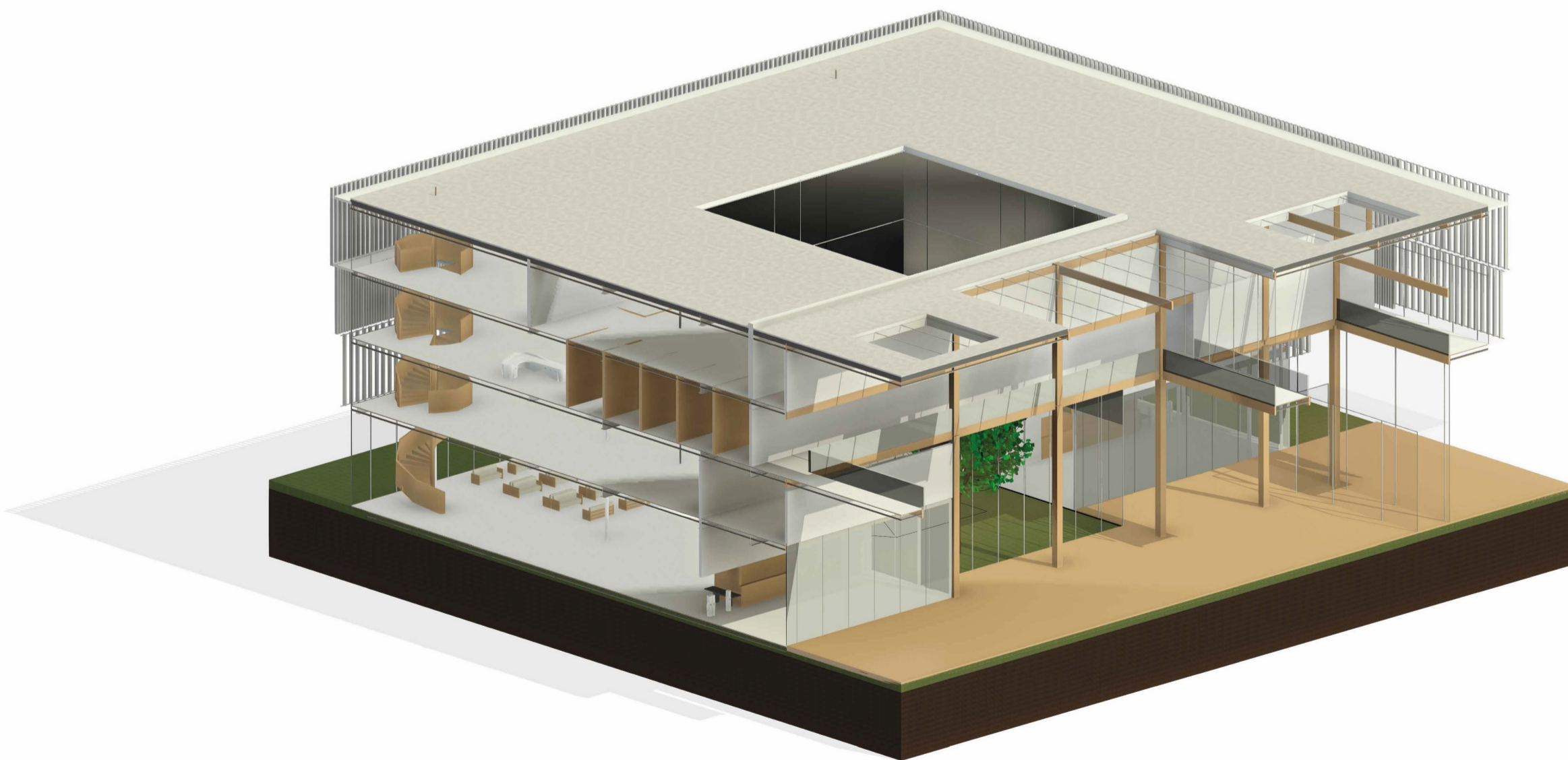
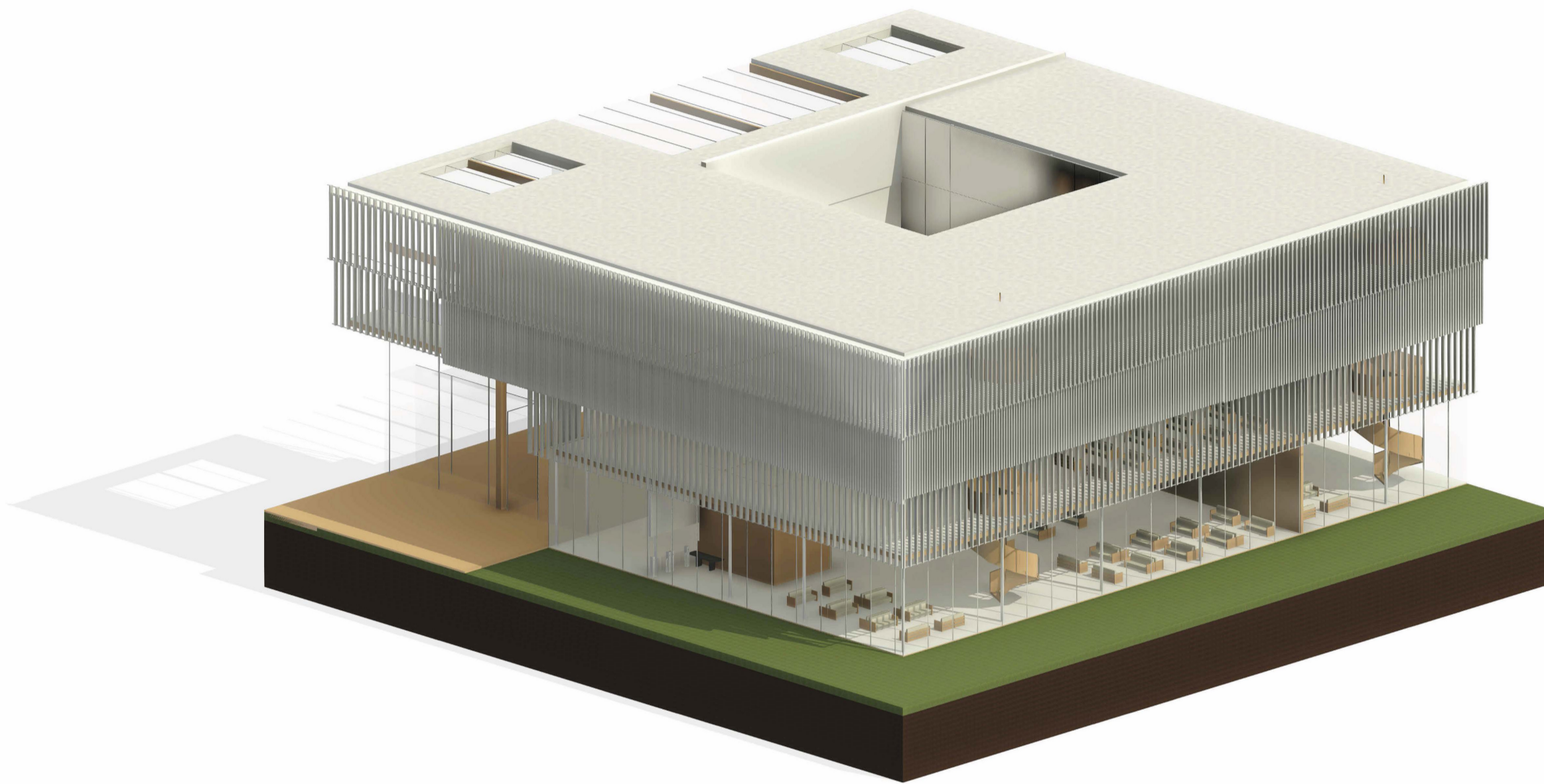




THE ARRIVAL CITY

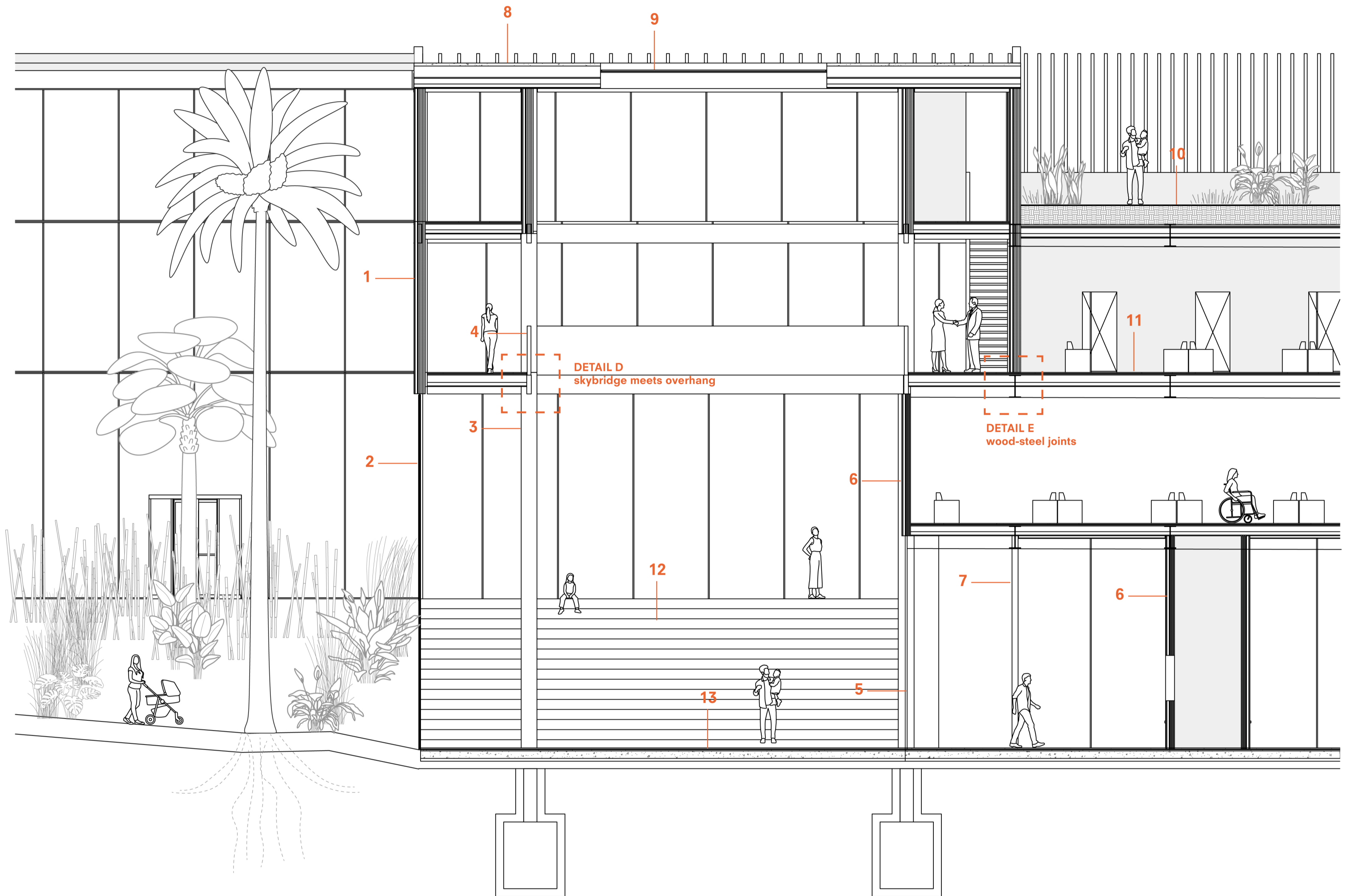
# ARCHITECTURE FOR THE DISPLACED

*One building representing the resettlement procedure in the arrival city of Berlin*



ARCHITECTURE FOR THE DISPLACED

One building representing the resettlement procedure in the arrival city of Berlin



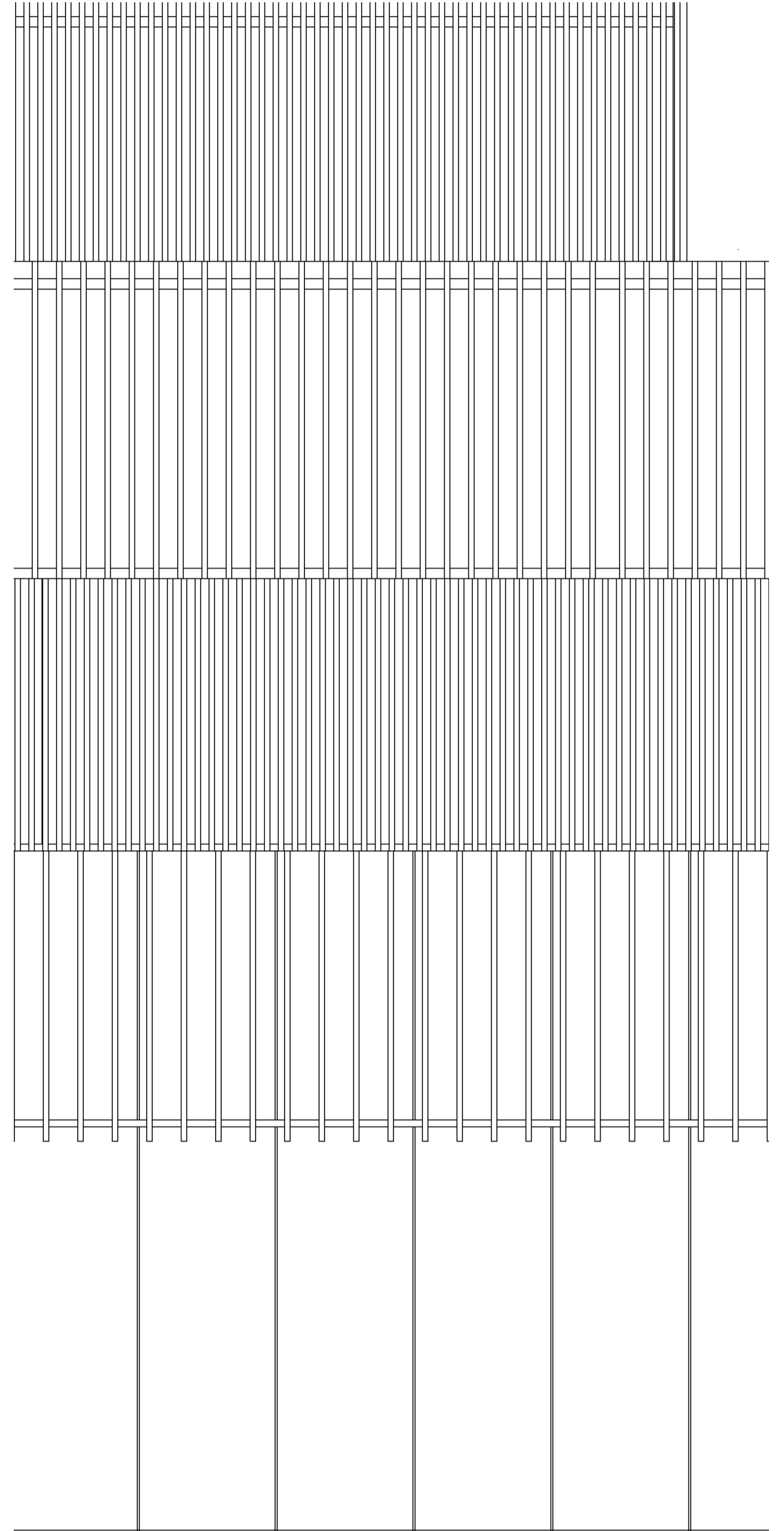
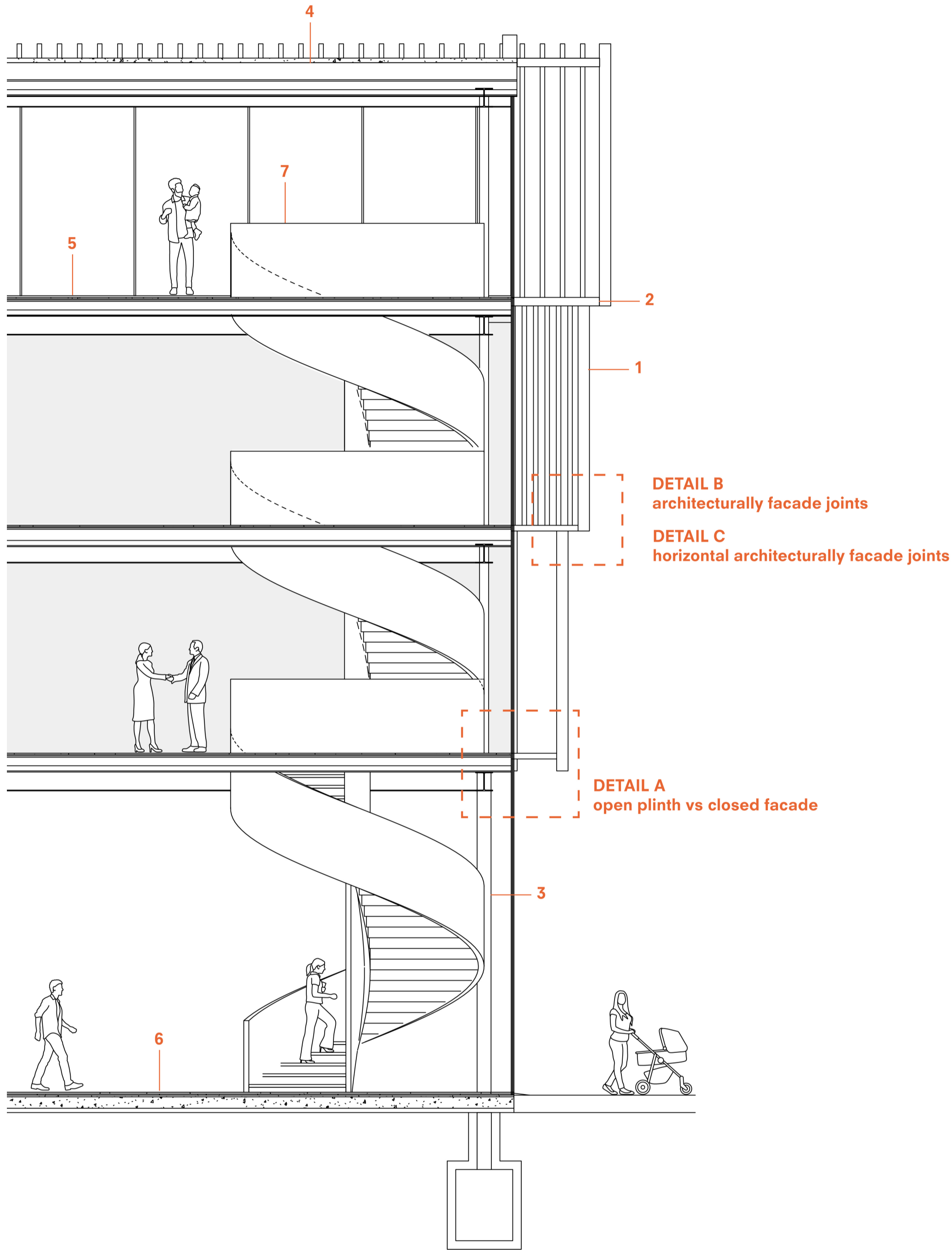
- 1. Exterior Wall**  
plaster  
cladding system  
wind protection layer  
vapour retarder  
120 5-layer CLT wall element  
10 mm sealing strip  
70 mm metalstud with 10 mm air layer and 60 mm Sonobase rockwool  
25 mm plasterboard extra soundproofing  
plaster
- 2. Facade**  
HR+++ glazing 4-18-4-18-4 with high reflective coating on exterior  
30 mm square recantangular mullions on 2000 mm distance
- 3. Structure**  
timber columns 420x420  
glulam beams 120x500,  
demountable connected via steel element
- 4. Sky bridge**  
white polycarbonate railing, 40x500x5000 mm  
floor finish  
25 mm floating gypsum fiber board  
20 mm wood fiber insulation  
Kerto Ripa structural elements 350x10000x2500 mm,  
with 90 mm of Rockwool insulation  
finish
- 5. Interior wall**  
sideways lightly coloured polycarbonate, 40x500x4000 mm
- 6. Interior wall**  
plaster  
25 mm plasterboard extra soundproofing

- 70 mm metalstud with  
60 mm Sonobase rockwool  
10 mm air layer  
10 mm sealing strip  
120 mm 5-layer CLT wall element
- 7. Structure**  
white coated HSS tube steel column, circle, d=160/240 mm  
HEA650/HEA600/HEA340 beams
- 8. Roof**  
sedum  
300-100 mm insulation (water remittance)  
Kerto Ripa structural elements 350x10000x2500 mm,  
with 100 mm of Rockwool insulation  
vapour retarder  
50 mm of Rockwool insulation  
finish
- 9. Top lights**  
roof lights and sun screen system
- 10. Roof**  
soil with planting  
filter fabric  
resevoir layer  
moisture-retention layer  
aeration layer  
thermal insulation  
drainage layer  
root barrier  
membrane protection  
green roof waterproofing membrane  
Kerto Ripa structural elements  
Kerto Ripa structural elements 290x8000x2500 mm,  
with 100 mm of Rockwool insulation

- vapour retarder  
50 mm of Rockwool Insulation  
lowered ceiling with acoustic panels
- 11. Floor**  
30 mm finish  
Wood Fiber insulation  
Kerto Ripa structural elements 290x8000x2500 mm,  
with 90 mm of Rock Wool insulation  
lowered ceiling with acoustic panels
- 12. Stairs**  
wood structure and finish
- 13. Ground floor**  
30 mm finish  
50 mm screed  
200 mm hollowcore precast slab floor  
75 mm glass fiber insulation

# ARCHITECTURE FOR THE DISPLACED

One building representing the resettlement procedure in the arrival city of Berlin



**1. Facade**  
 HR+++ glazing 4-18-4-18-4  
 30 mm square rectangular mullions on 2000 mm distance  
 variable space between glazing and facade: 750/1125/1500 mm, depending  
 on level,  
 with metal grid flooring  
 white coated aluminium extruded slat facade, with slats varying in depth  
 (100-300 mm)  
 and spacing (200/350/500 mm)

**2. Floor**  
 metal grid flooring

**3. Structure**  
 white coated HSS tube steel column, circle, d=160/240 mm  
 HEA650/HEA600/HEA340 beams

**4. Roof**  
 sun panels  
 sedum  
 300-100 mm insulation (water remittance)  
 Kerto Ripa structural elements 350x10000x2500 mm,  
 with 100 mm of Rockwool insulation  
 vapour retarder  
 50 mm of Rockwool insulation  
 finish

**5. Floor**  
 30 mm finish  
 Wood Fiber insulation  
 Kerto Ripa structural elements 290x8000x2500 mm,  
 with 90 mm of Rock Wool insulation  
 lowered ceiling with acoustic panels

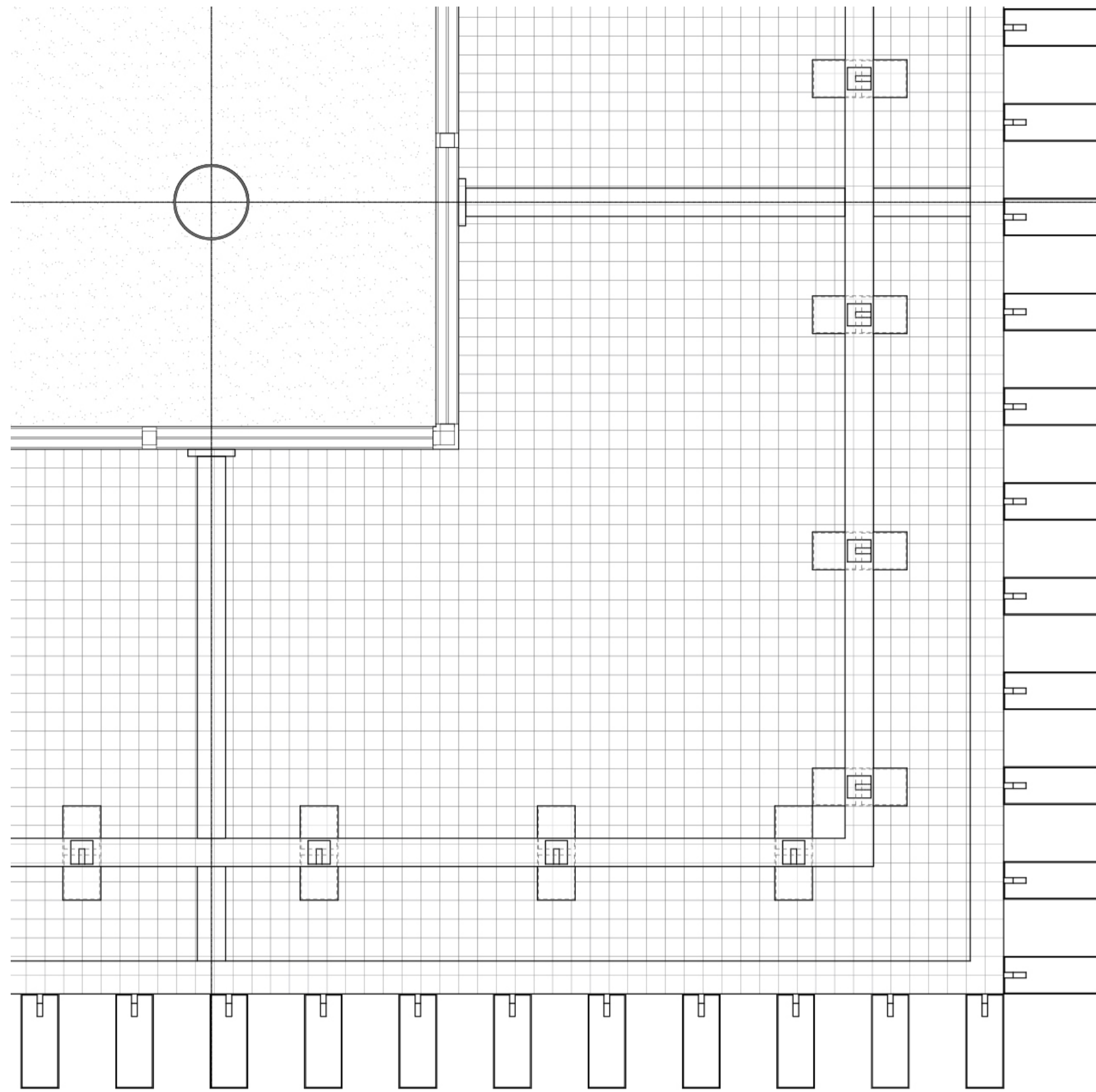
**6. Ground floor**  
 30 mm finish  
 50 mm screed  
 200 mm hollowcore precast slab floor  
 75 mm glass fiber insulation

**7. Stairs**  
 wood structure and finish

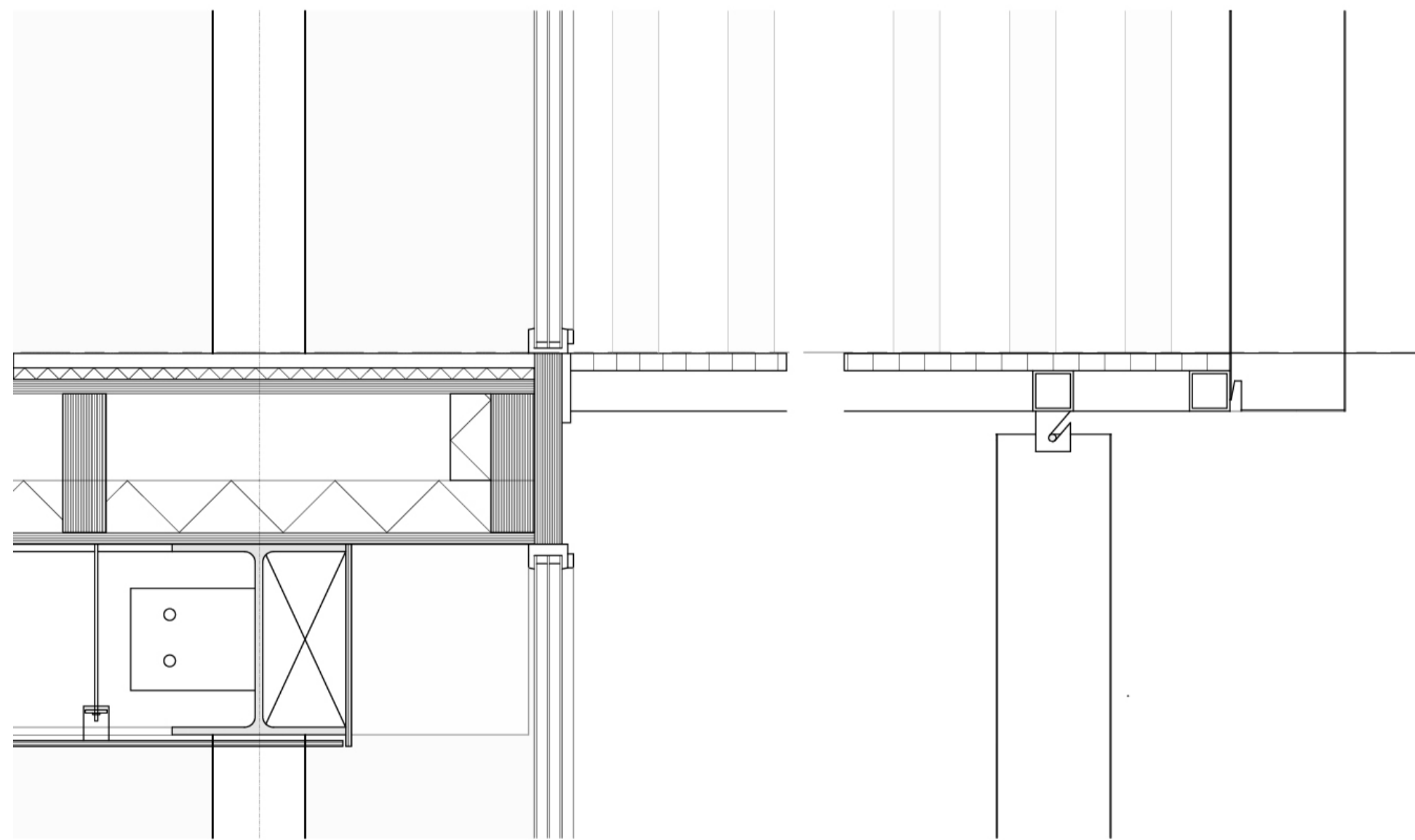
# ARCHITECTURE FOR THE DISPLACED

*One building representing the resettlement procedure in the arrival city of Berlin*

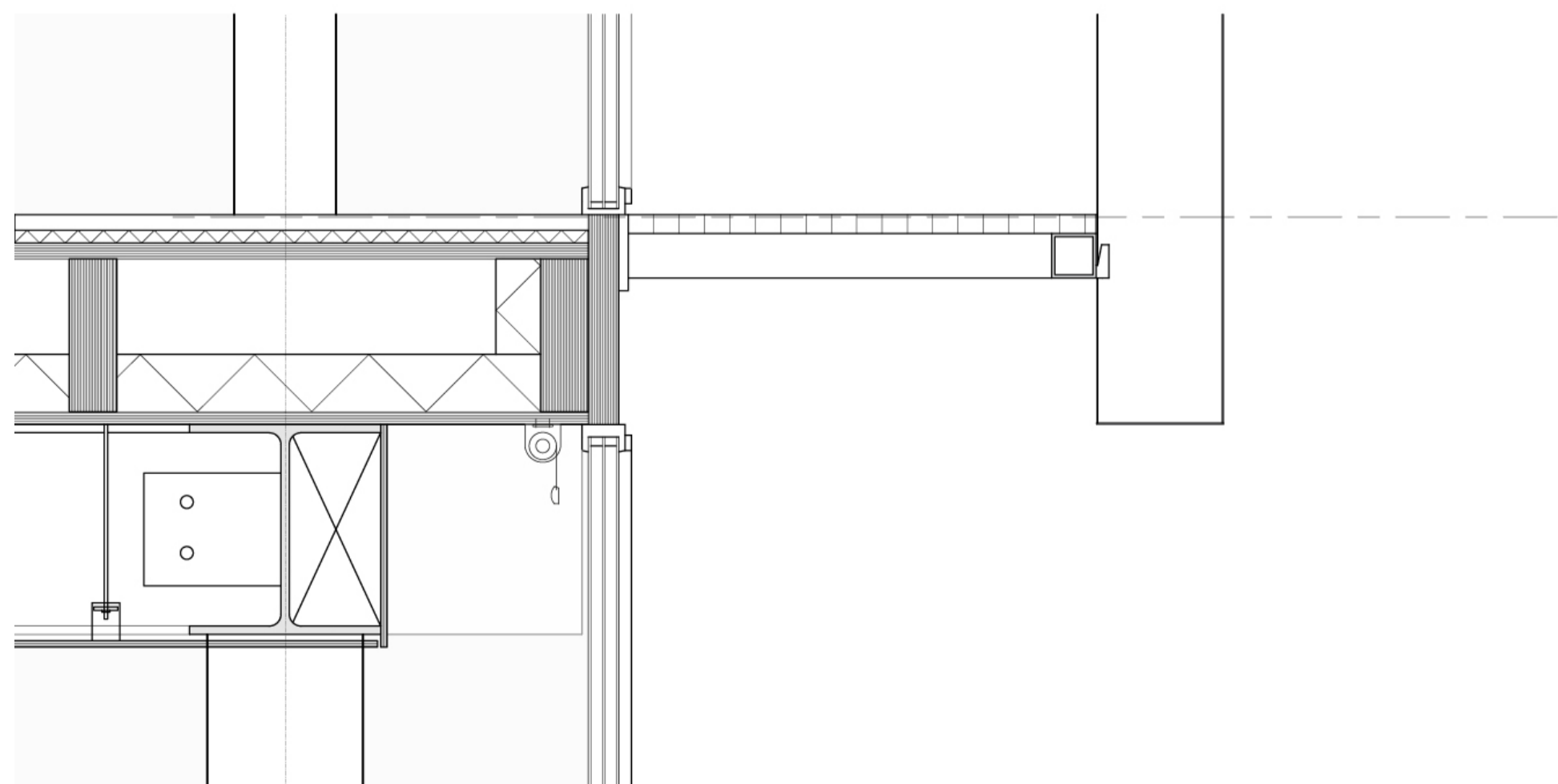
Detail C



Detail B



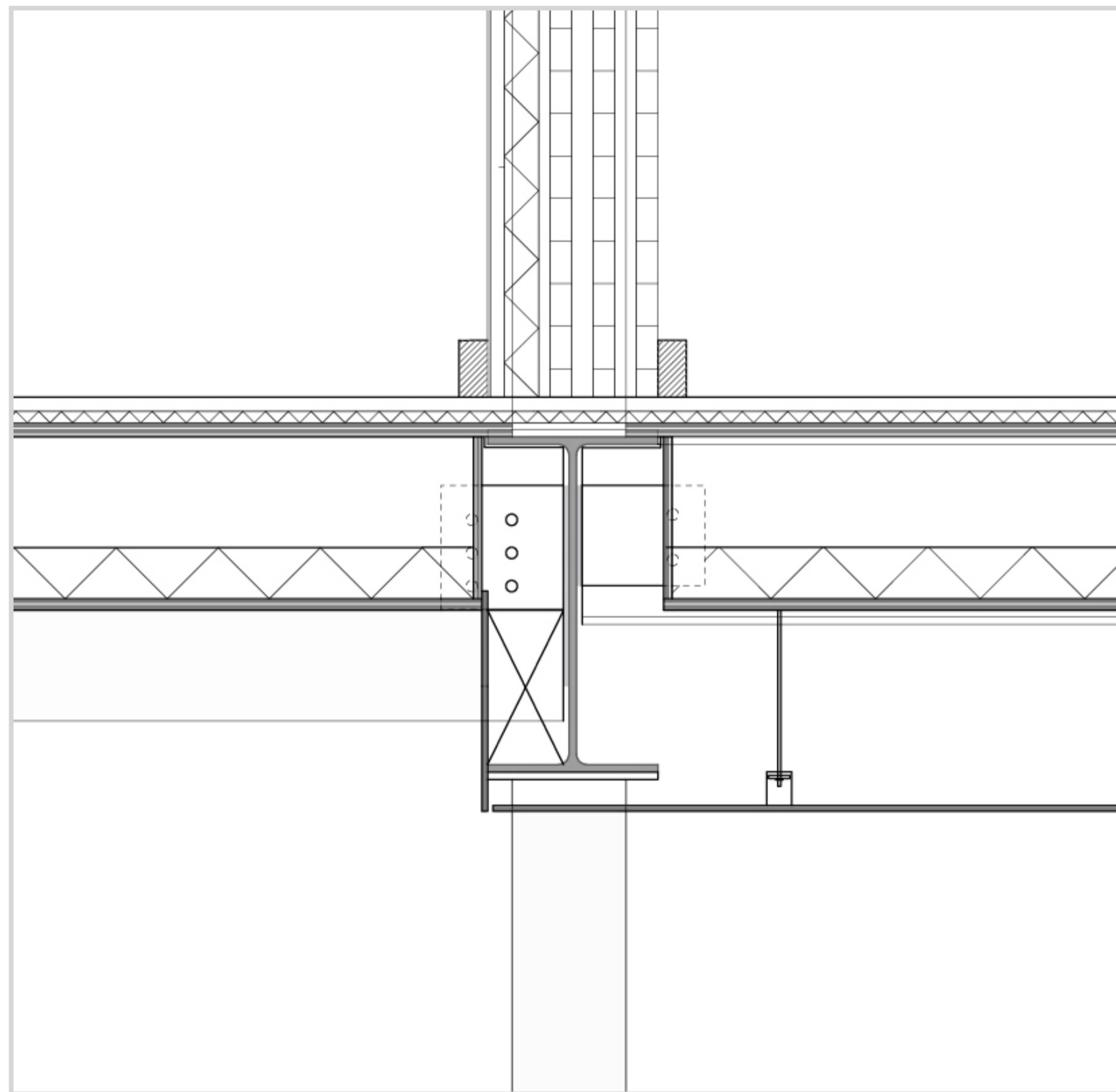
Detail A



**ARCHITECTURE FOR THE DISPLACED**

*One building representing the resettlement procedure in the arrival city of Berlin*

Detail E



Detail D

