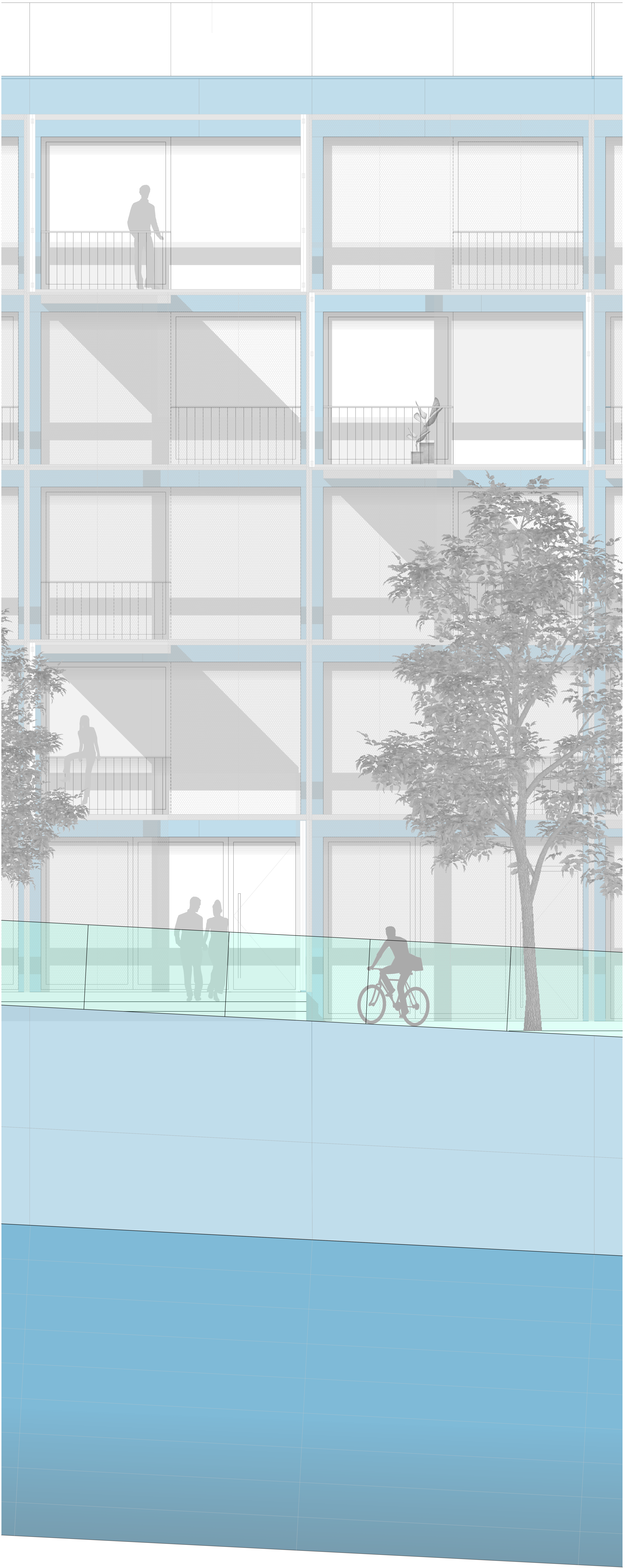


B

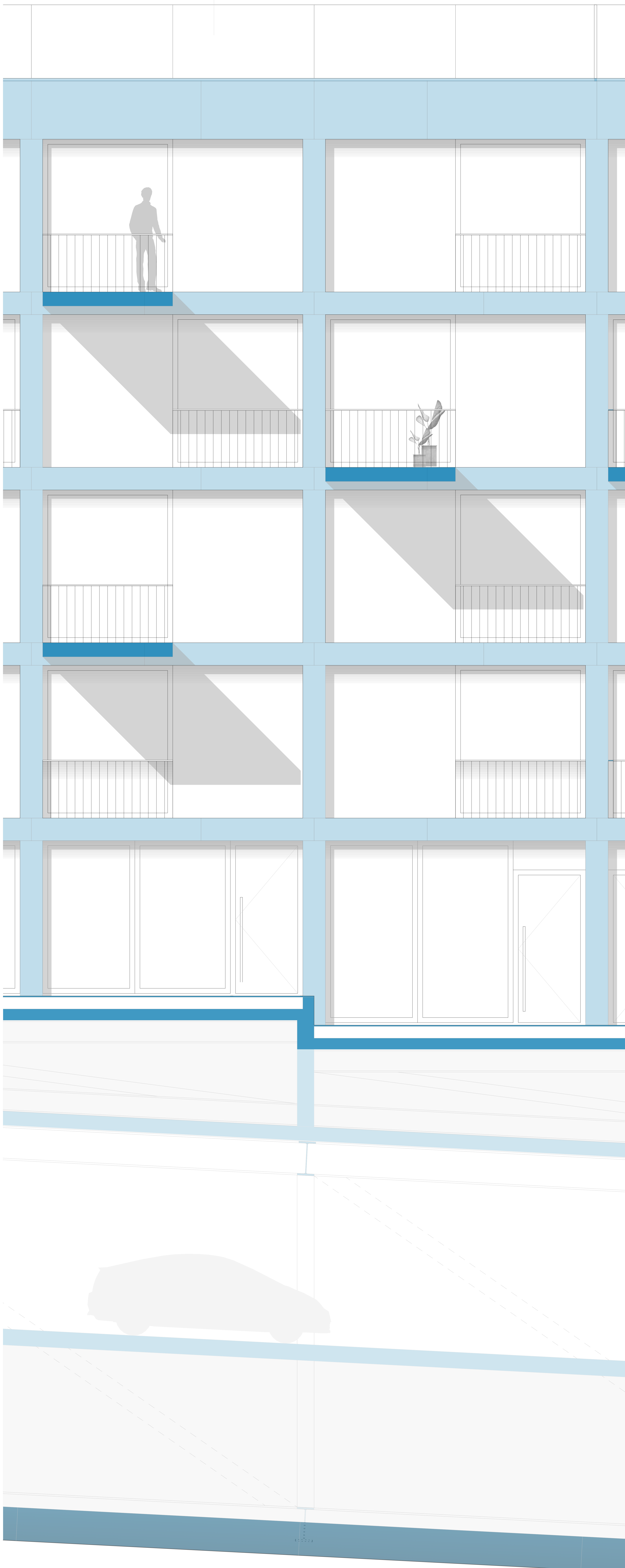
ELEVATION 1:20



B'

B

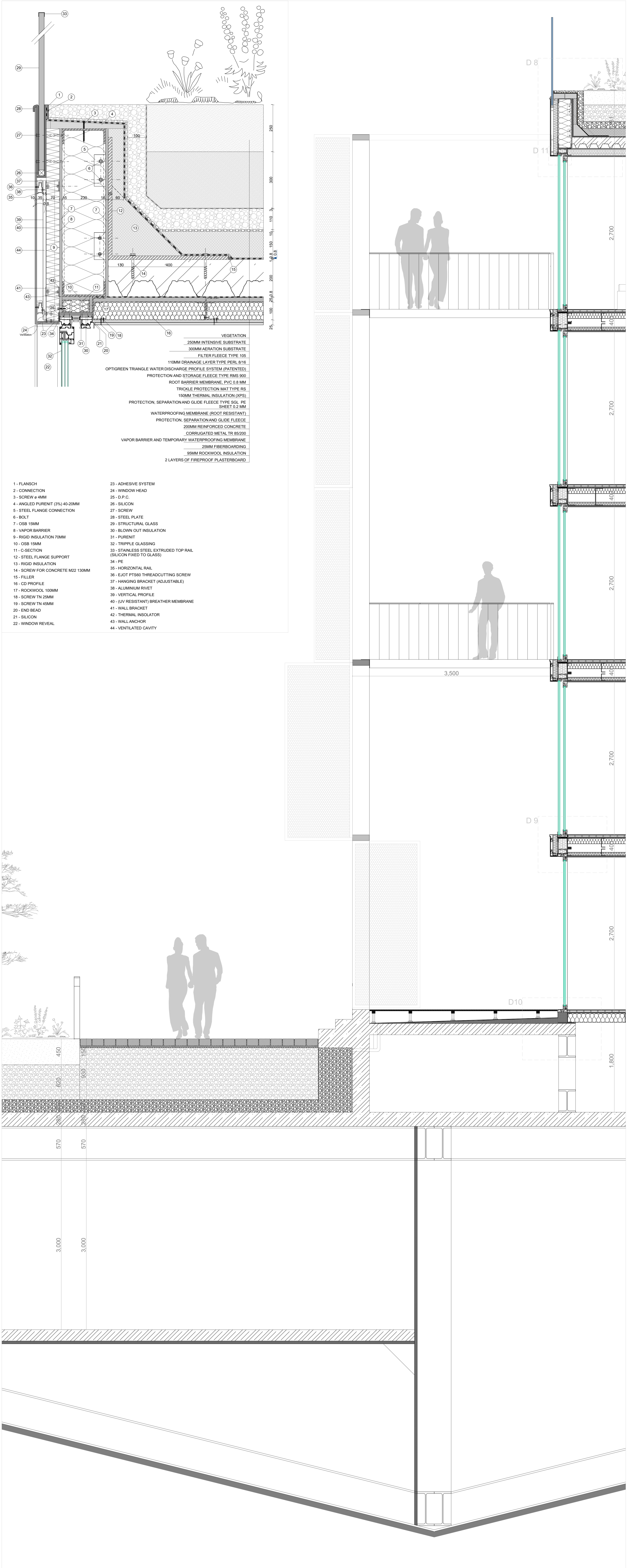
ELEVATION 1:20



B'

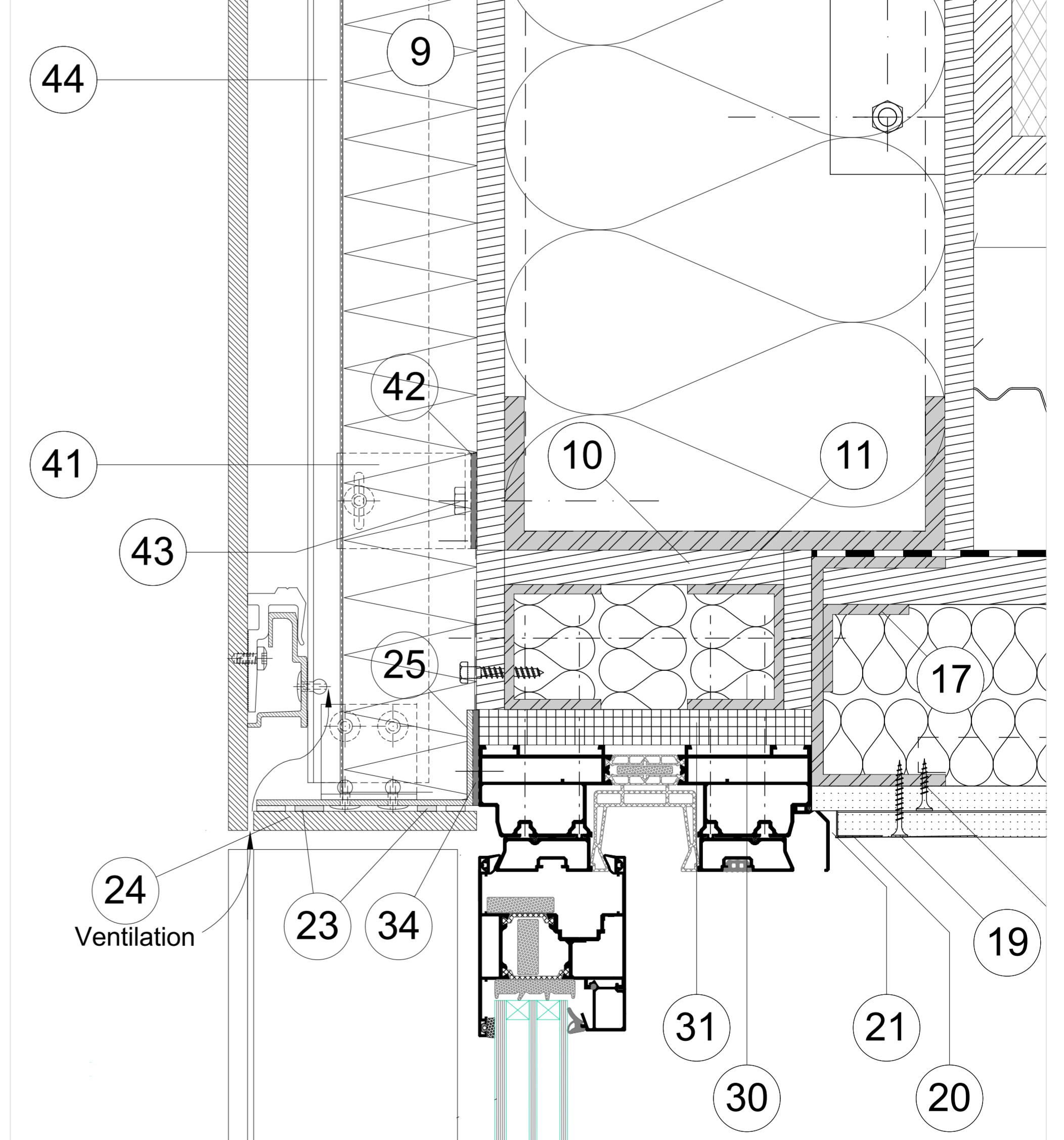
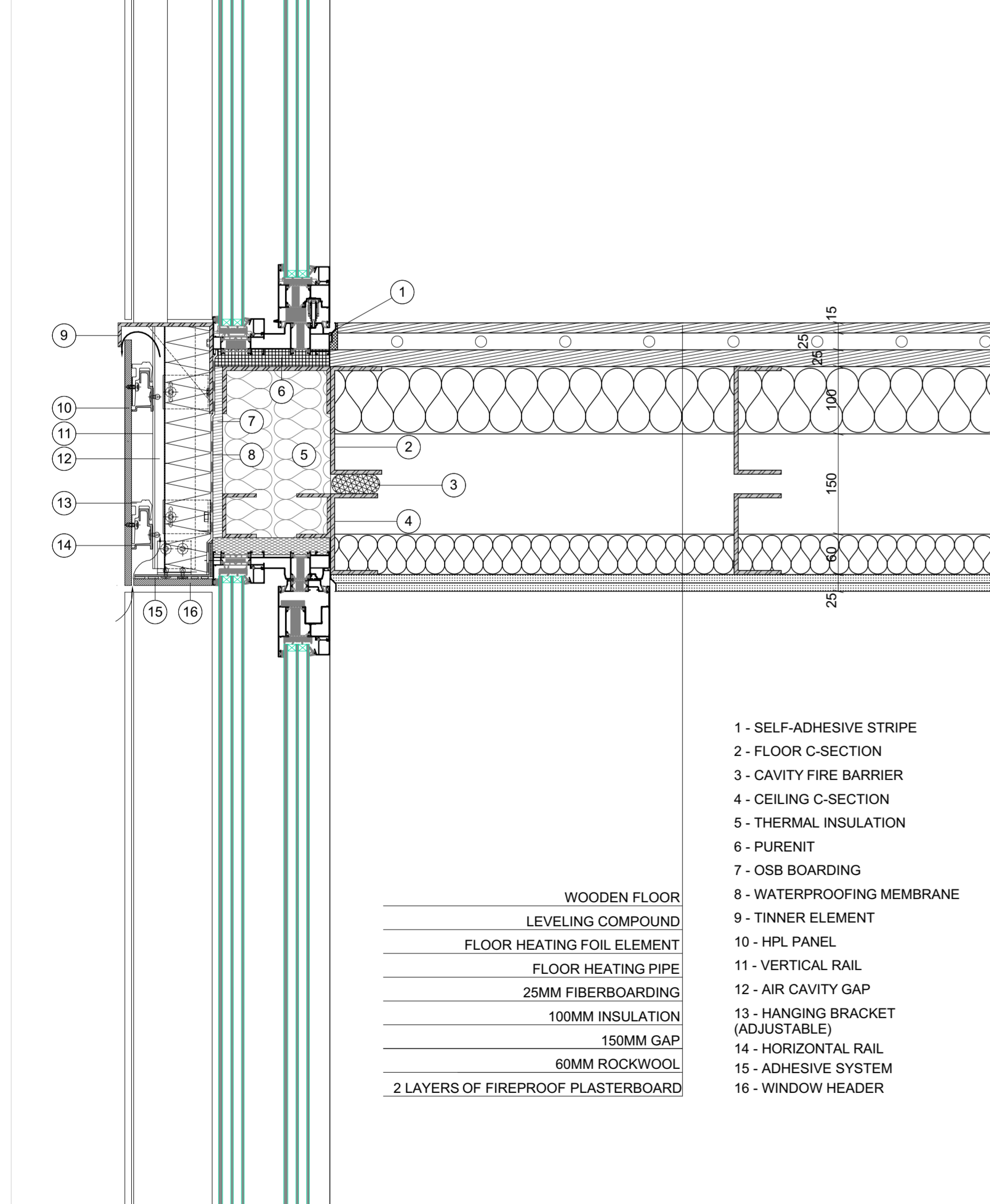
# DETAIL 8

# SECTION B-B' 1:20

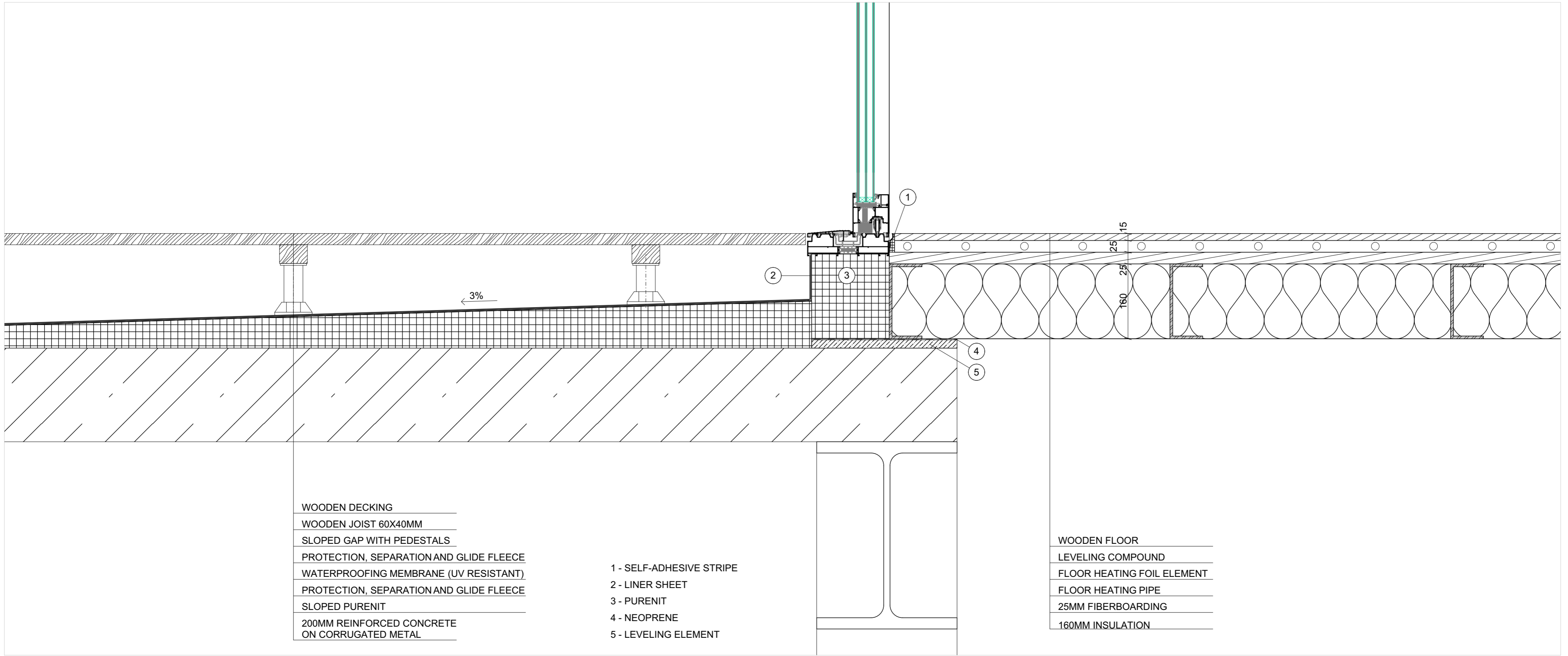


# DETAIL 9

# DETAIL 11 (1:2)

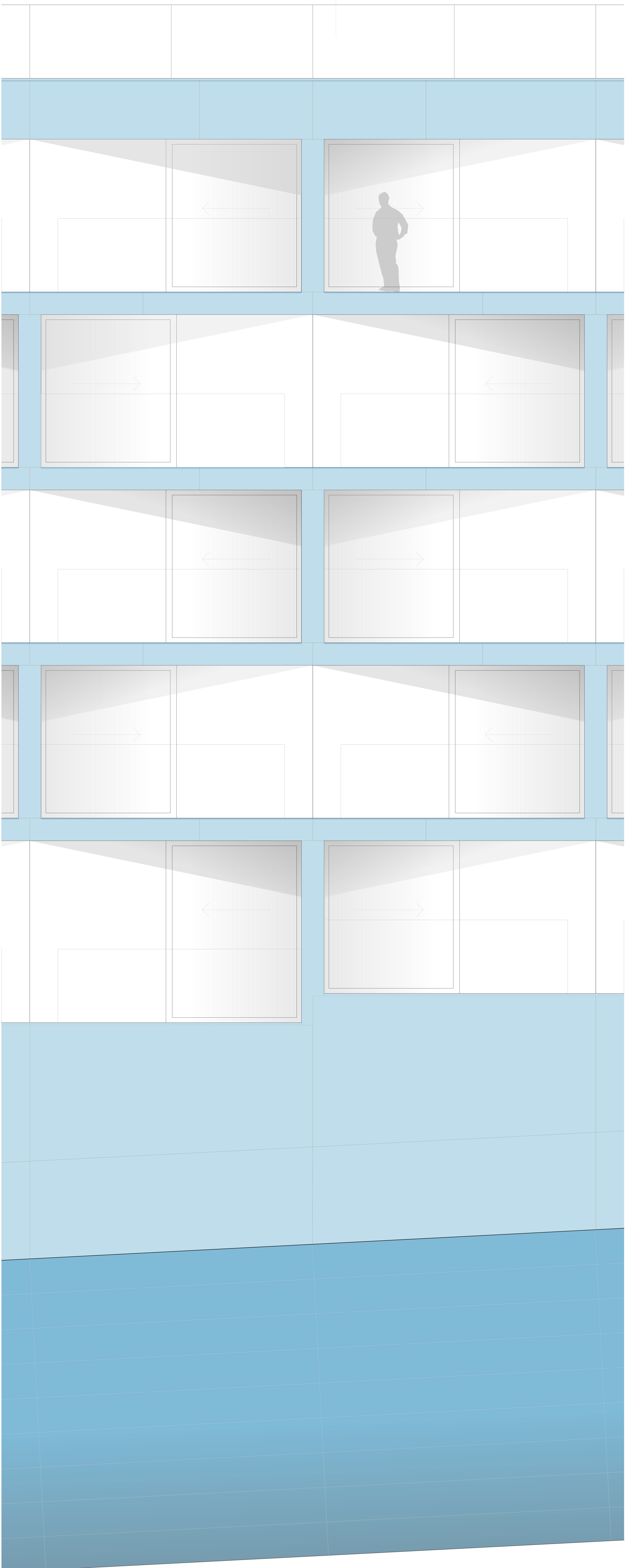


# DETAIL 10



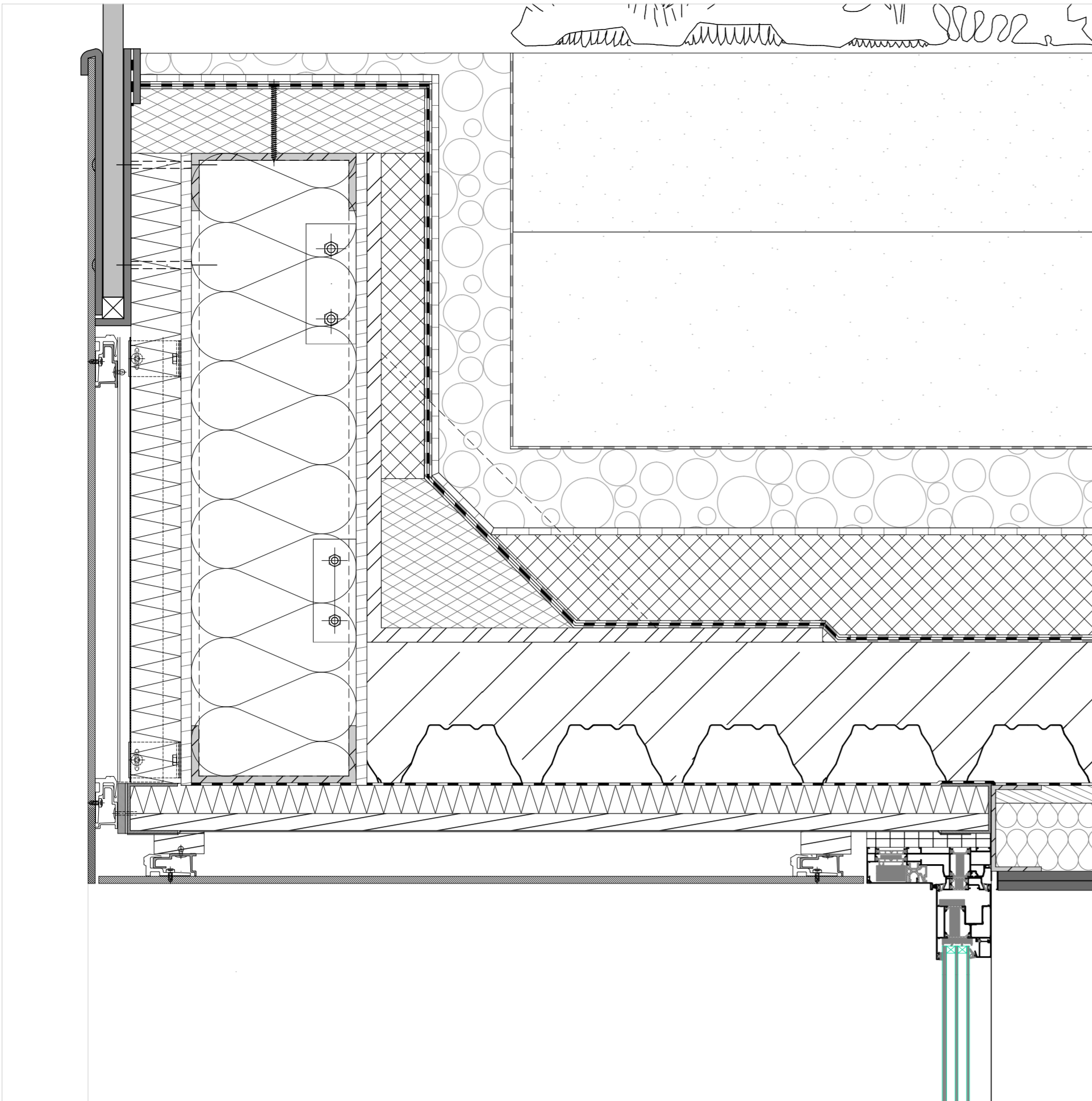
A

ELEVATION 1/20

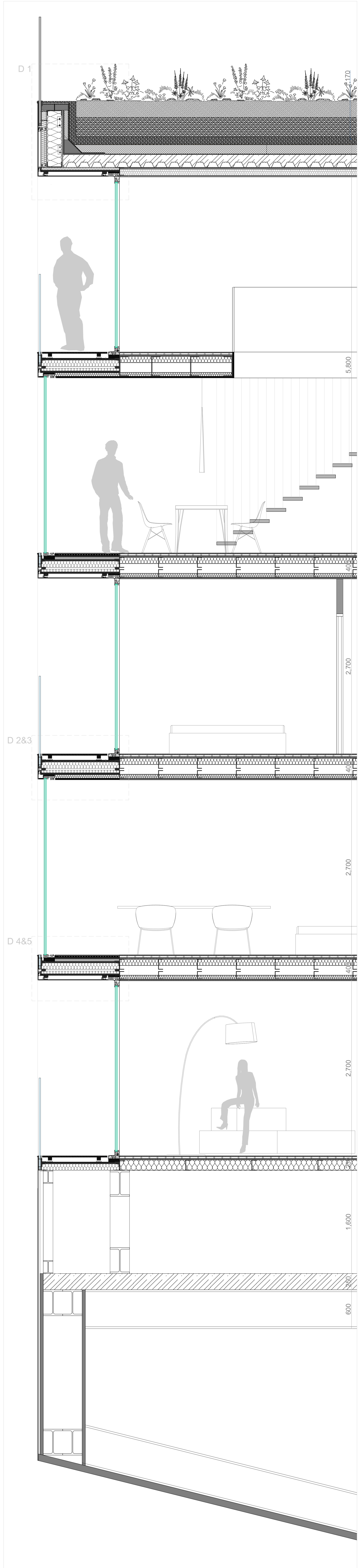


A'

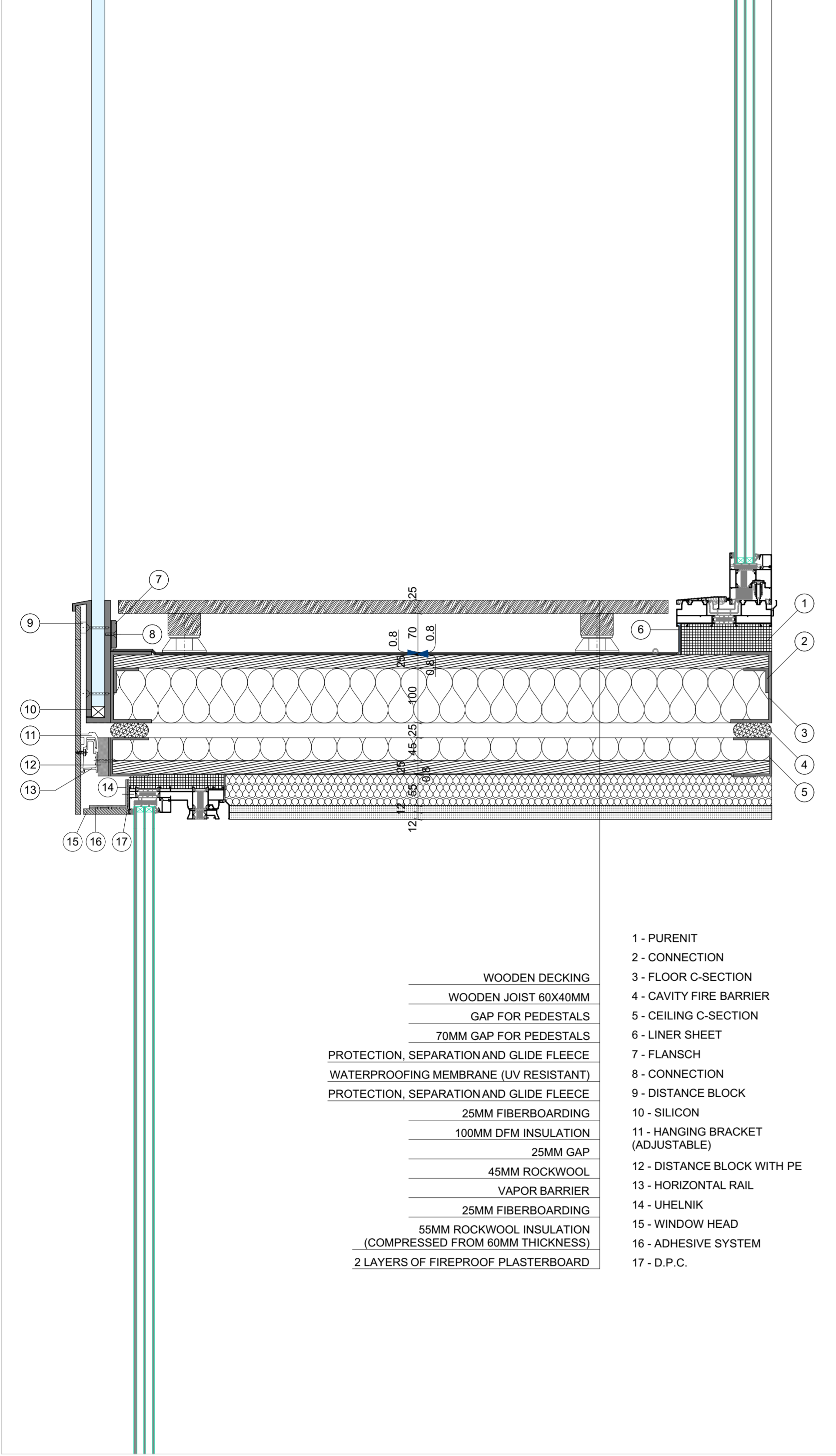
### DETAIL 1



### SECTION AA'

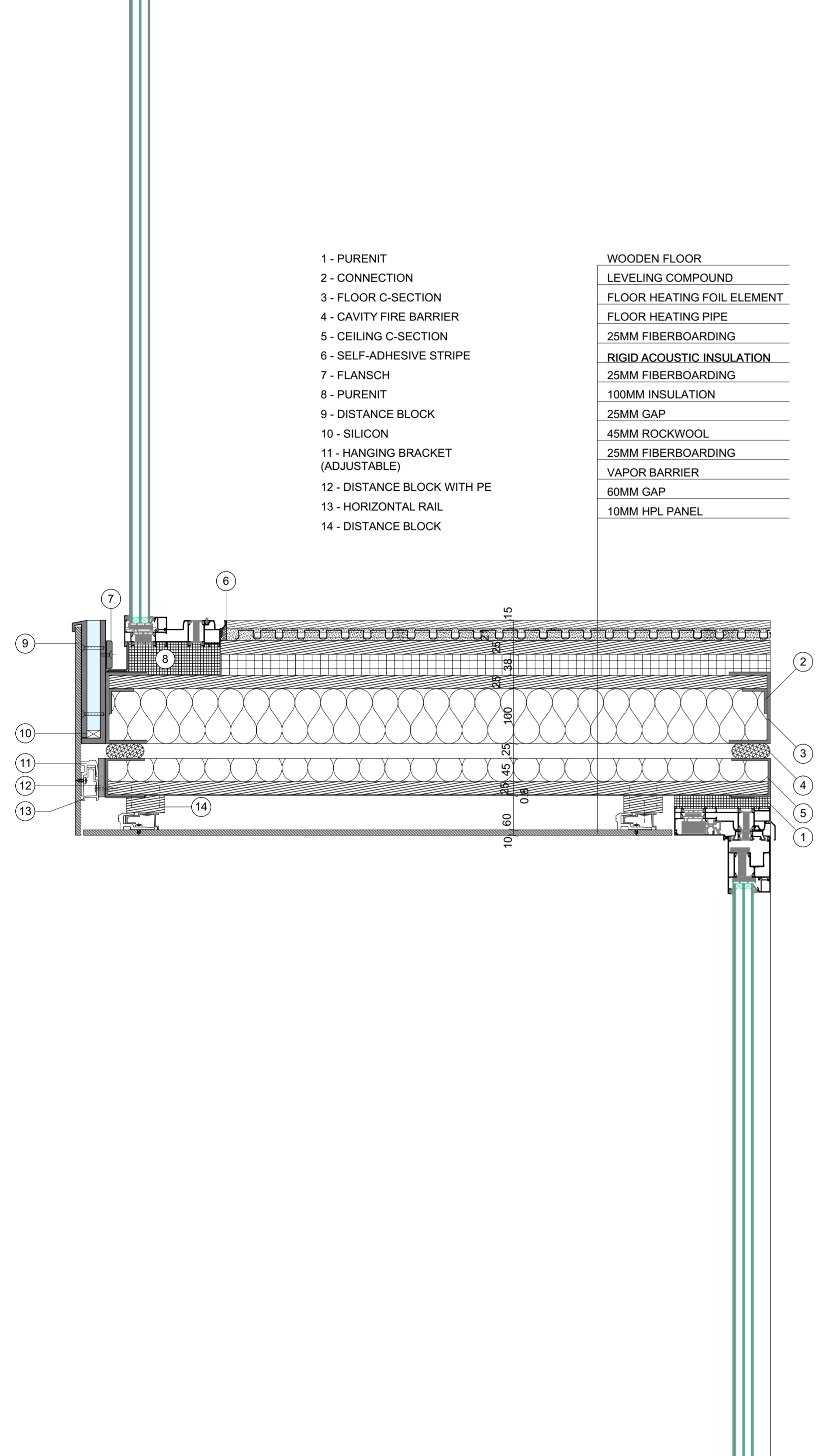


### DETAIL 2&3



- 1 - PURSIT
- 2 - CONNECTION
- 3 - FLOOR C-SECTION
- 4 - CAVITY FIRE BARRIER
- 5 - CEILING C-SECTION
- 6 - LINER SHEET
- 7 - FLANSCH
- 8 - CONNECTION
- 9 - DISTANCE BLOCK
- 10 - SILICON
- 11 - HANGING BRACKET (ADJUSTABLE)
- 12 - DISTANCE BLOCK WITH PE
- 13 - HORIZONTAL RAIL
- 14 - UHELNK
- 15 - WINDOW HEAD
- 16 - ADHESIVE SYSTEM
- 17 - D.P.C.

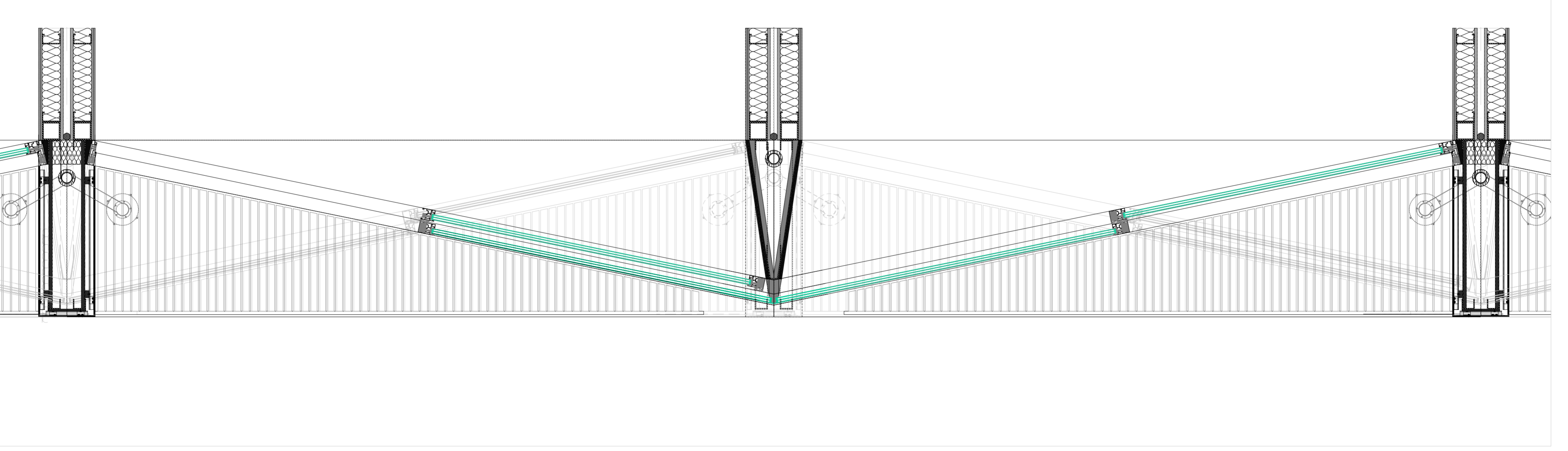
### DETAIL 4&5



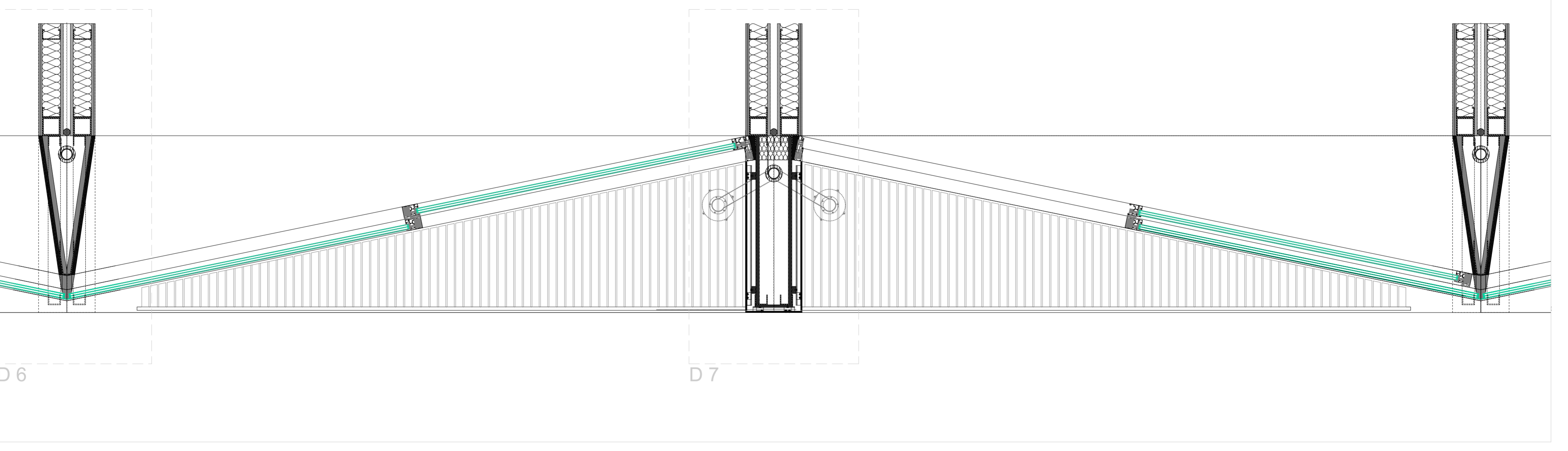
- 1 - PURSIT
- 2 - CONNECTION
- 3 - FLOOR C-SECTION
- 4 - CAVITY FIRE BARRIER
- 5 - CEILING C-SECTION
- 6 - SELF-ADHESIVE STRIPE
- 7 - FLANSCH
- 8 - PURSIT
- 9 - DISTANCE BLOCK
- 10 - SILICON
- 11 - HANGING BRACKET (ADJUSTABLE)
- 12 - DISTANCE BLOCK WITH PE
- 13 - HORIZONTAL RAIL
- 14 - DISTANCE BLOCK

- WOODEN FLOOR
- LEVELING COMPOUND
- FLOOR HEATING FOIL ELEMENT
- FLOOR HEATING PIPE
- 25MM FIBERBOARDING
- RIGID ACOUSTIC INSULATION
- 25MM FIBERBOARDING
- 100MM INSULATION
- 25MM GAP
- 45MM ROCKWOOL
- 25MM FIBERBOARDING
- VAPOR BARRIER
- 60MM GAP
- 10MM HPL PANEL

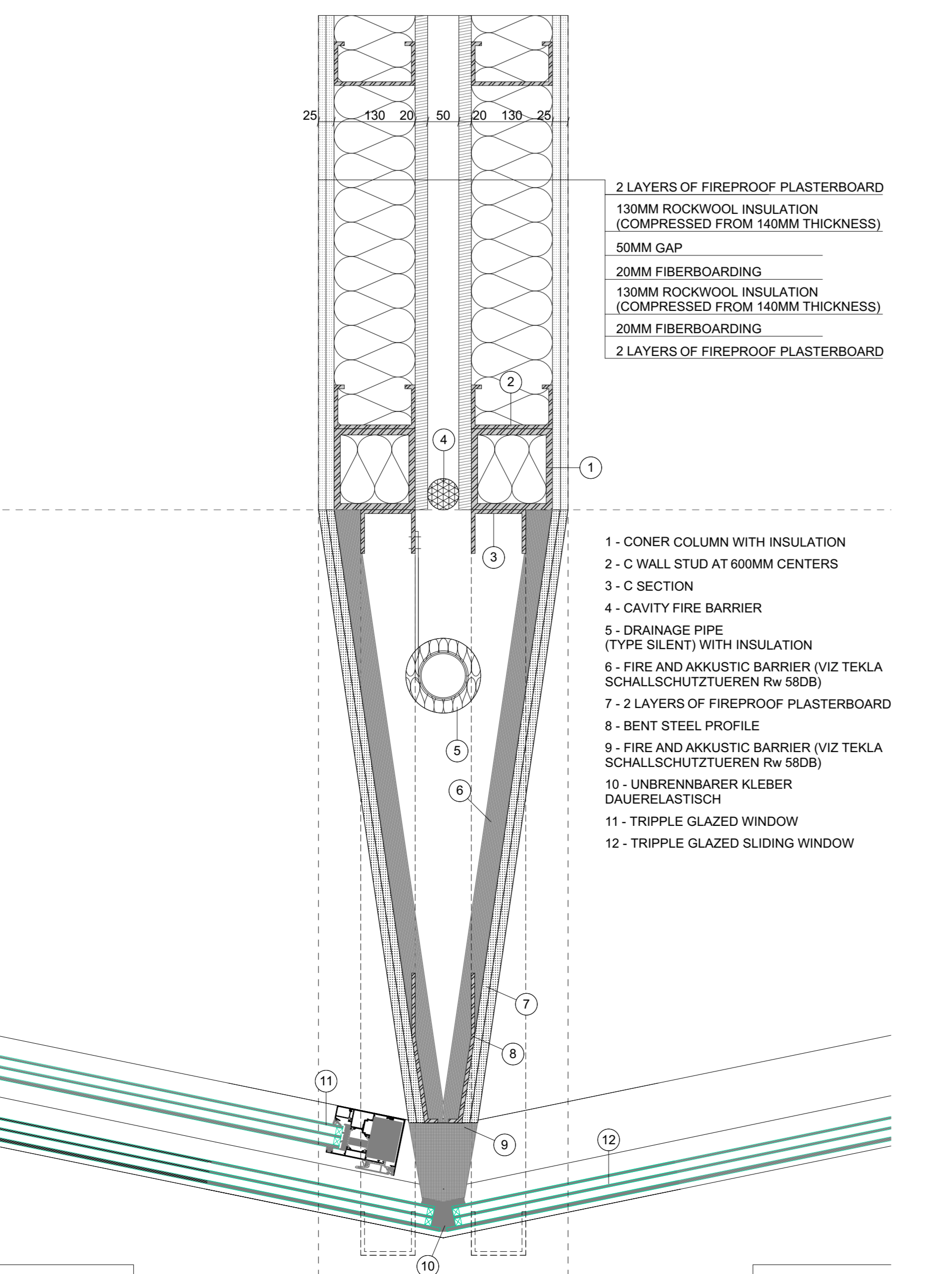
### PLAN 01 1/20



### PLAN 02 1/20



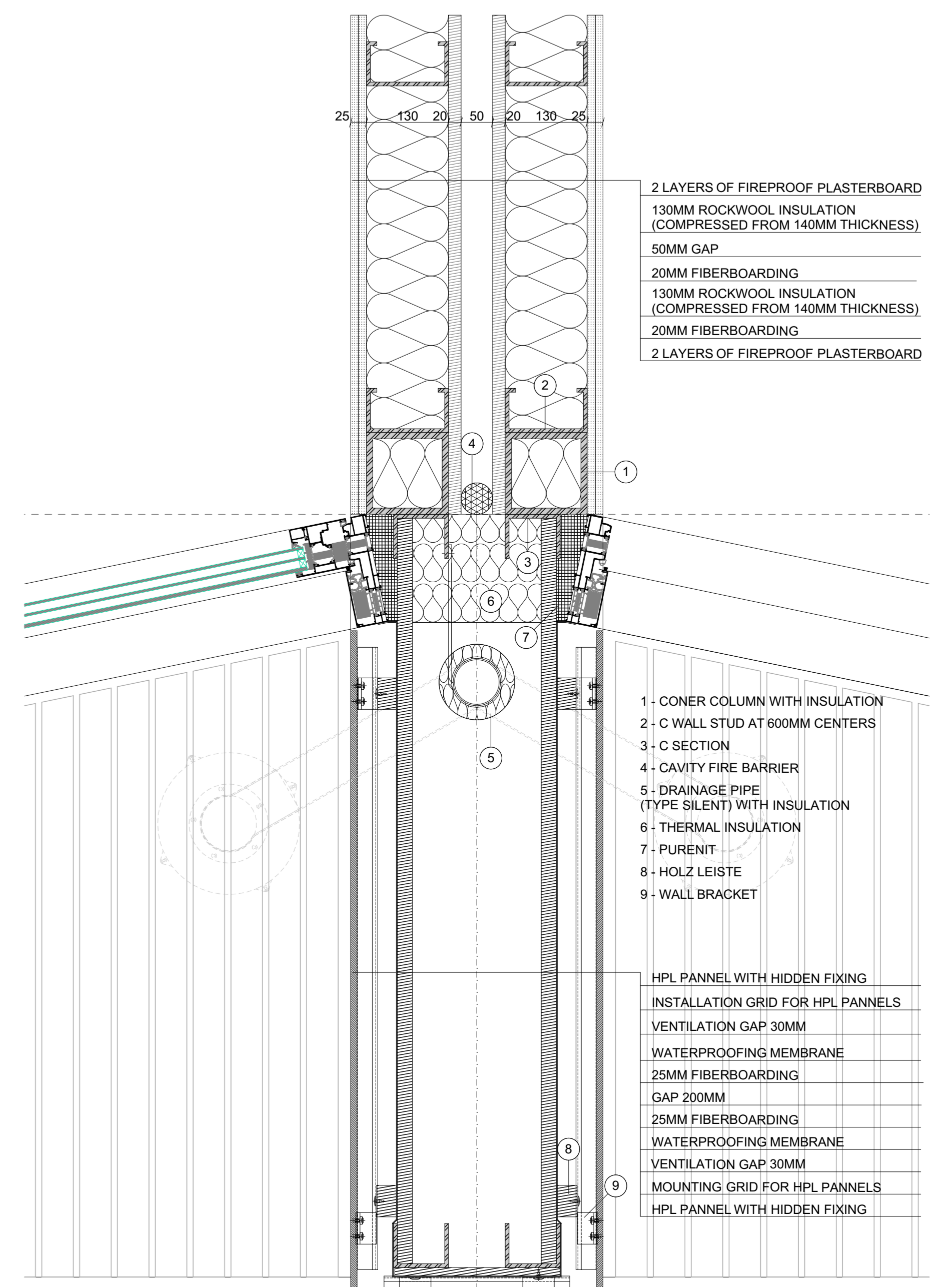
### DETAIL 6



- 2 LAYERS OF FIREPROOF PLASTERBOARD
- 100MM ROCKWOOL INSULATION (COMPRESSED FROM 140MM THICKNESS)
- 50MM GAP
- 20MM FIBERBOARDING
- 100MM ROCKWOOL INSULATION (COMPRESSED FROM 140MM THICKNESS)
- 20MM FIBERBOARDING
- 2 LAYERS OF FIREPROOF PLASTERBOARD

- 1 - CORNER COLUMN WITH INSULATION
- 2 - C WALL STUD AT 600MM CENTERS
- 3 - C SECTION
- 4 - CAVITY FIRE BARRIER
- 5 - DRAINAGE PIPE (TYPE SILENT) WITH INSULATION
- 6 - FIRE AND ACOUSTIC BARRIER (V2 TEKLA SCHALLSCHUTZUEIEN Rn 58DB)
- 7 - 2 LAYERS OF FIREPROOF PLASTERBOARD
- 8 - BENT STEEL PROFILE
- 9 - FIRE AND ACOUSTIC BARRIER (V2 TEKLA SCHALLSCHUTZUEIEN Rn 58DB)
- 10 - UNBRENNBARER KLEBER
- 11 - UNBRENNBARER KLEBER
- 12 - TRIPPLE GLAZED SLIDING WINDOW

### DETAIL 7



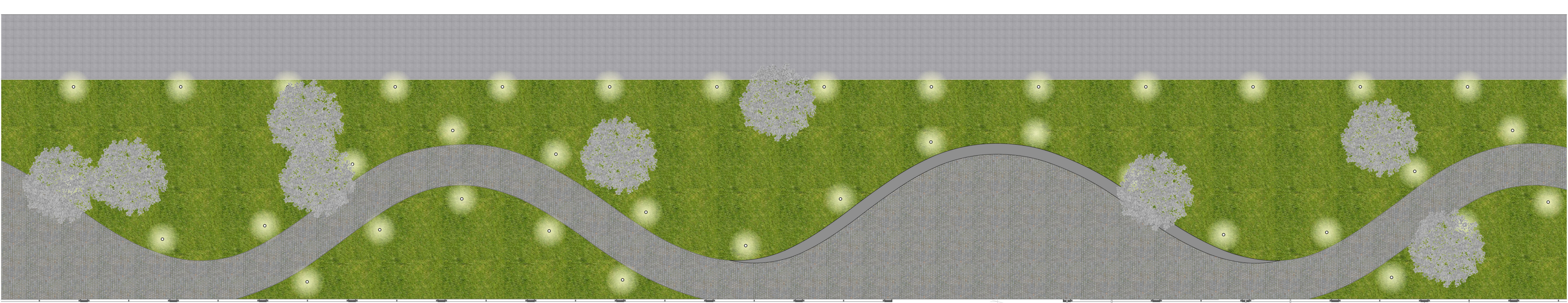
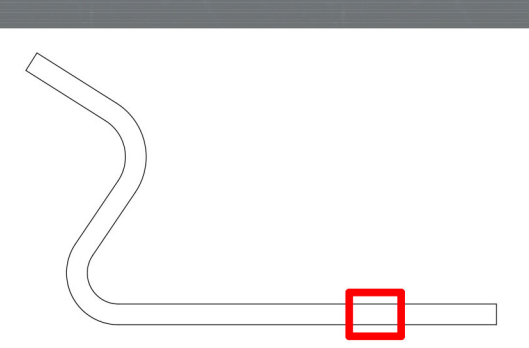
- 2 LAYERS OF FIREPROOF PLASTERBOARD
- 100MM ROCKWOOL INSULATION (COMPRESSED FROM 140MM THICKNESS)
- 50MM GAP
- 20MM FIBERBOARDING
- 100MM ROCKWOOL INSULATION (COMPRESSED FROM 140MM THICKNESS)
- 20MM FIBERBOARDING
- 2 LAYERS OF FIREPROOF PLASTERBOARD

- 1 - CORNER COLUMN WITH INSULATION
- 2 - C WALL STUD AT 600MM CENTERS
- 3 - C SECTION
- 4 - CAVITY FIRE BARRIER
- 5 - DRAINAGE PIPE (TYPE SILENT) WITH INSULATION
- 6 - THERMAL INSULATION
- 7 - PURSIT
- 8 - HOLZ LEISTE
- 9 - WALL BRACKET

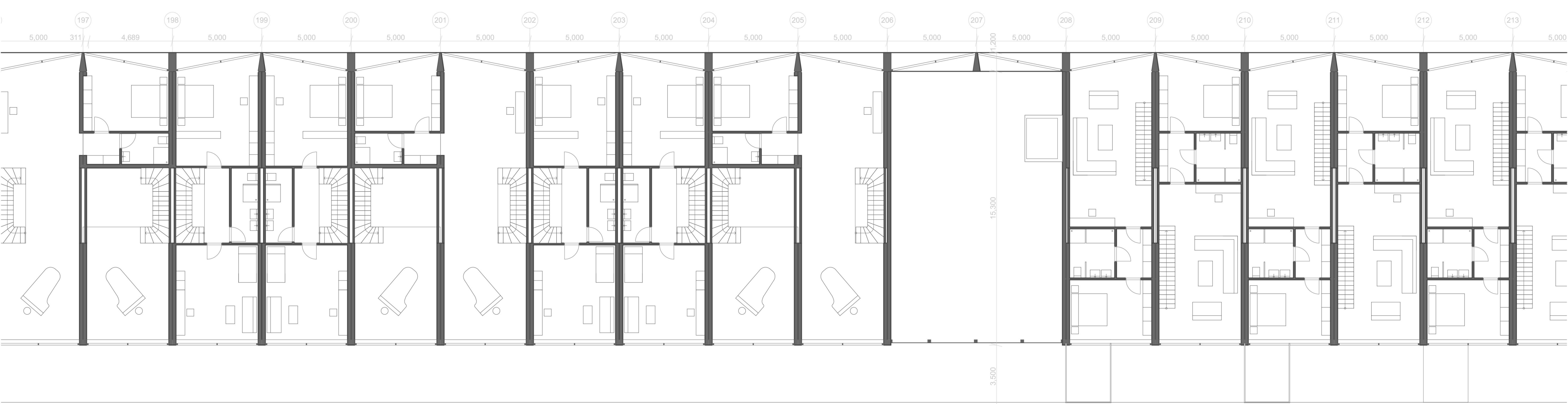
- HPL PANNEL WITH HIDDEN FIXING
- INSTALLATION GRID FOR HPL PANNELS
- VENTILATION GAP 50MM
- WATERPROOFING MEMBRANE
- 25MM FIBERBOARDING
- GAP 200MM
- 25MM FIBERBOARDING
- WATERPROOFING MEMBRANE
- VENTILATION GAP 50MM
- INSTALLATION GRID FOR HPL PANNELS
- HPL PANNEL WITH HIDDEN FIXING



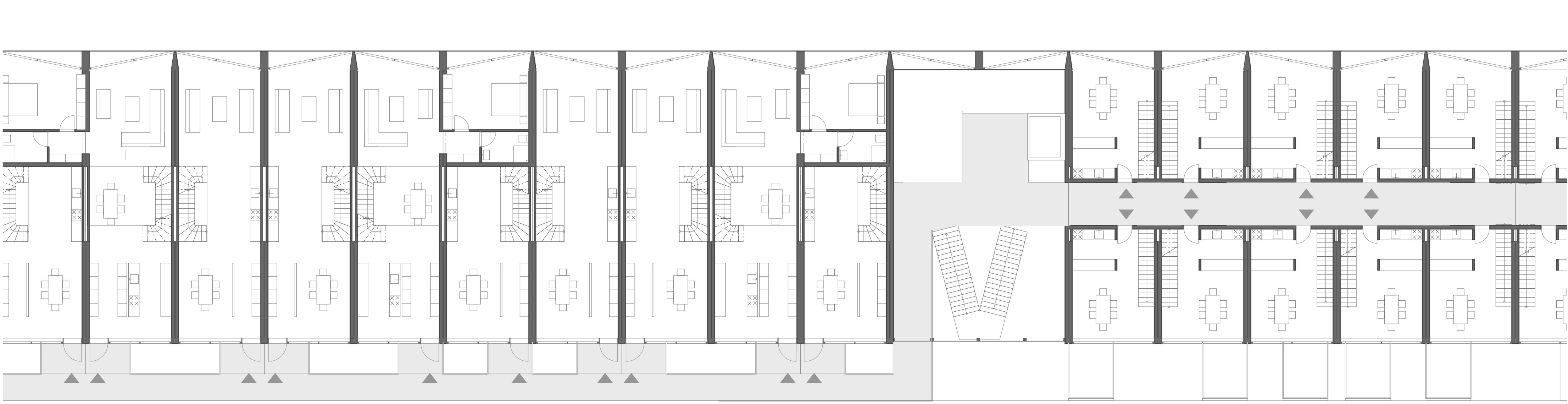
9. FLOOR 1/150



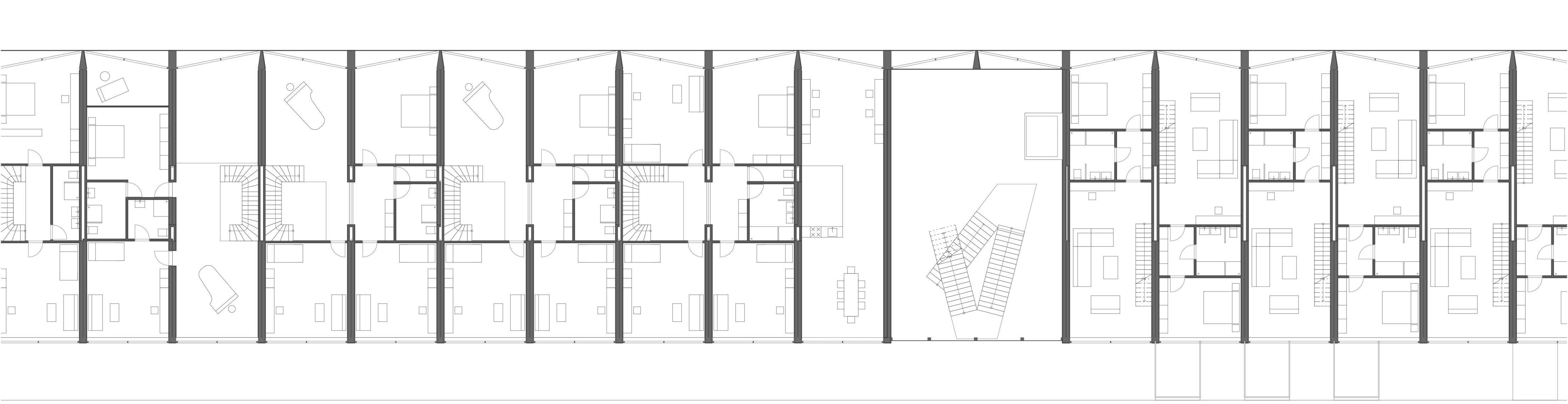
8. FLOOR 1/150



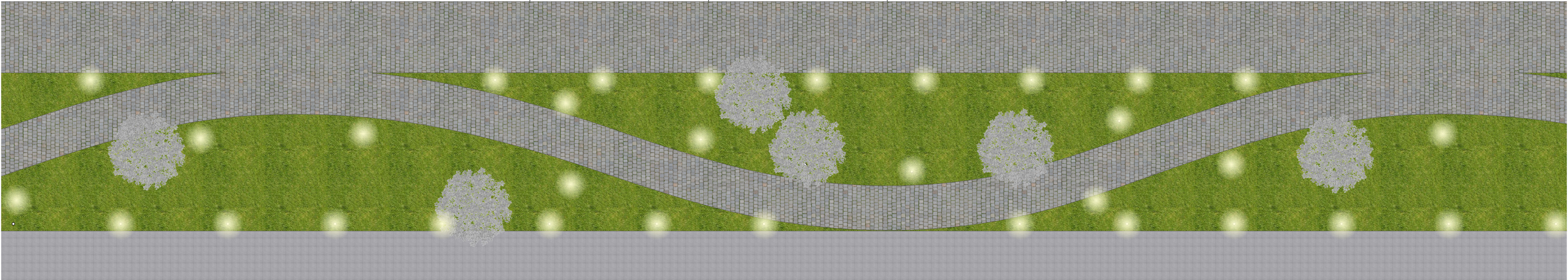
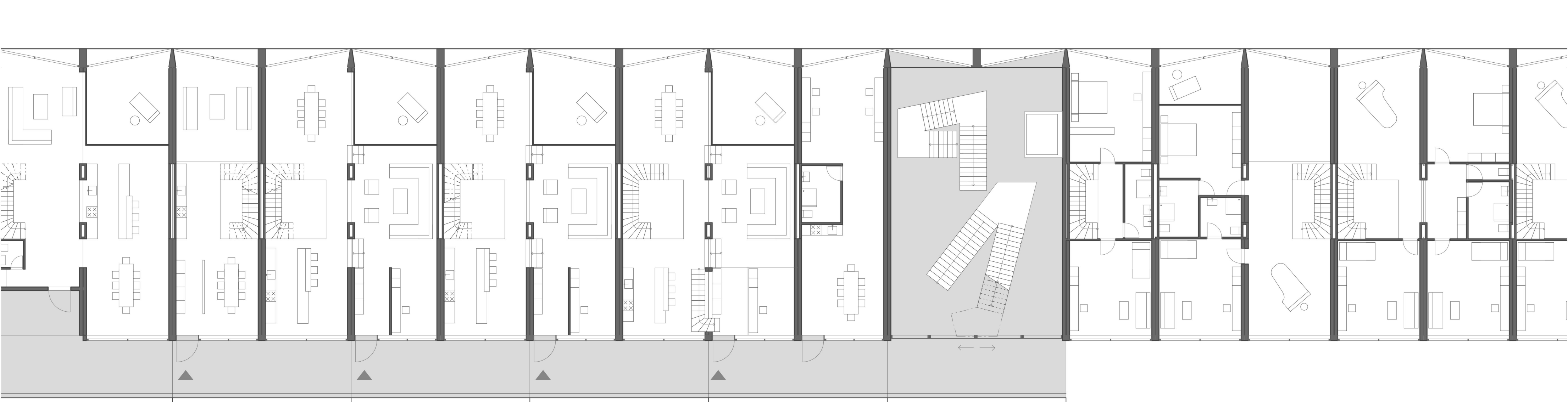
7. FLOOR 1/150



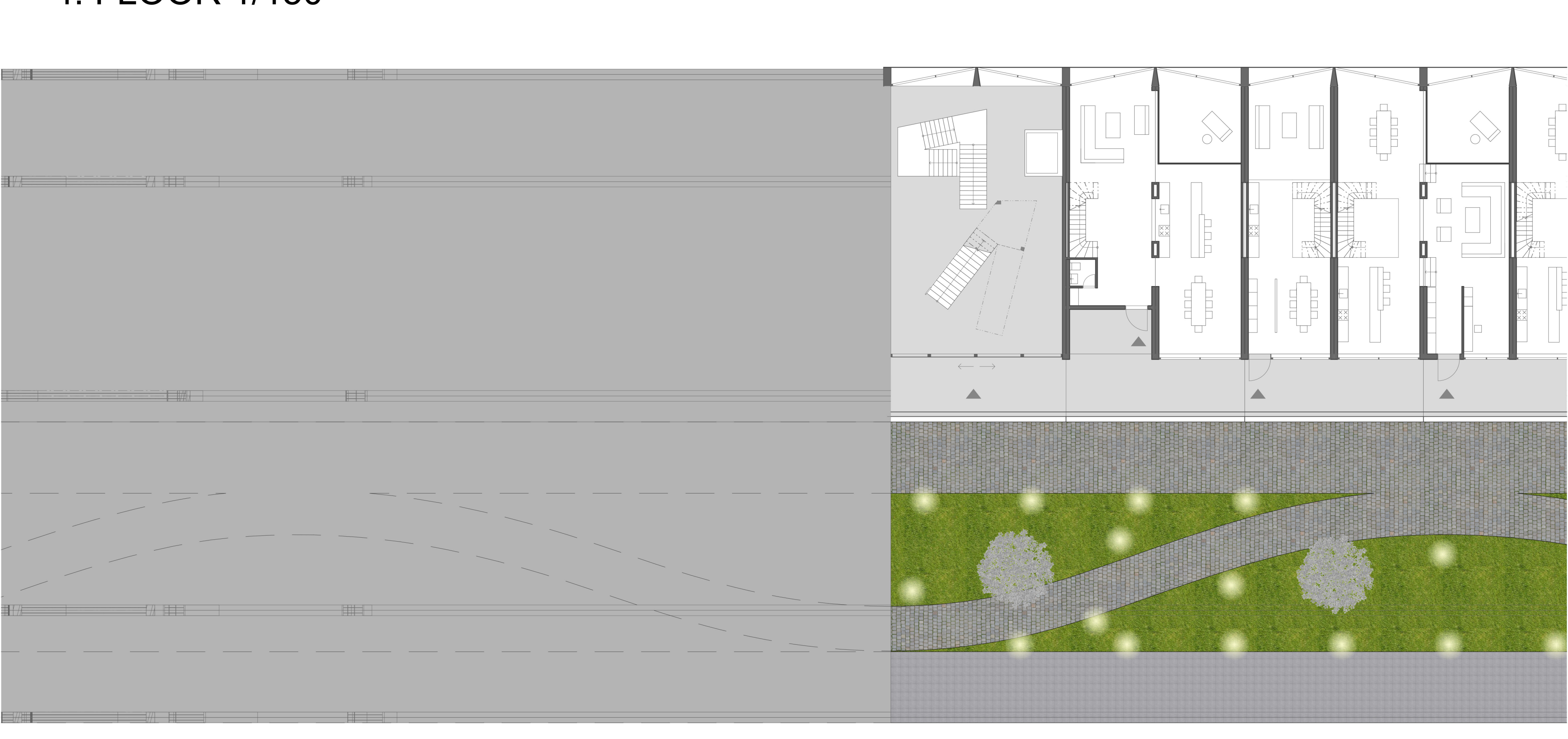
6. FLOOR 1/150



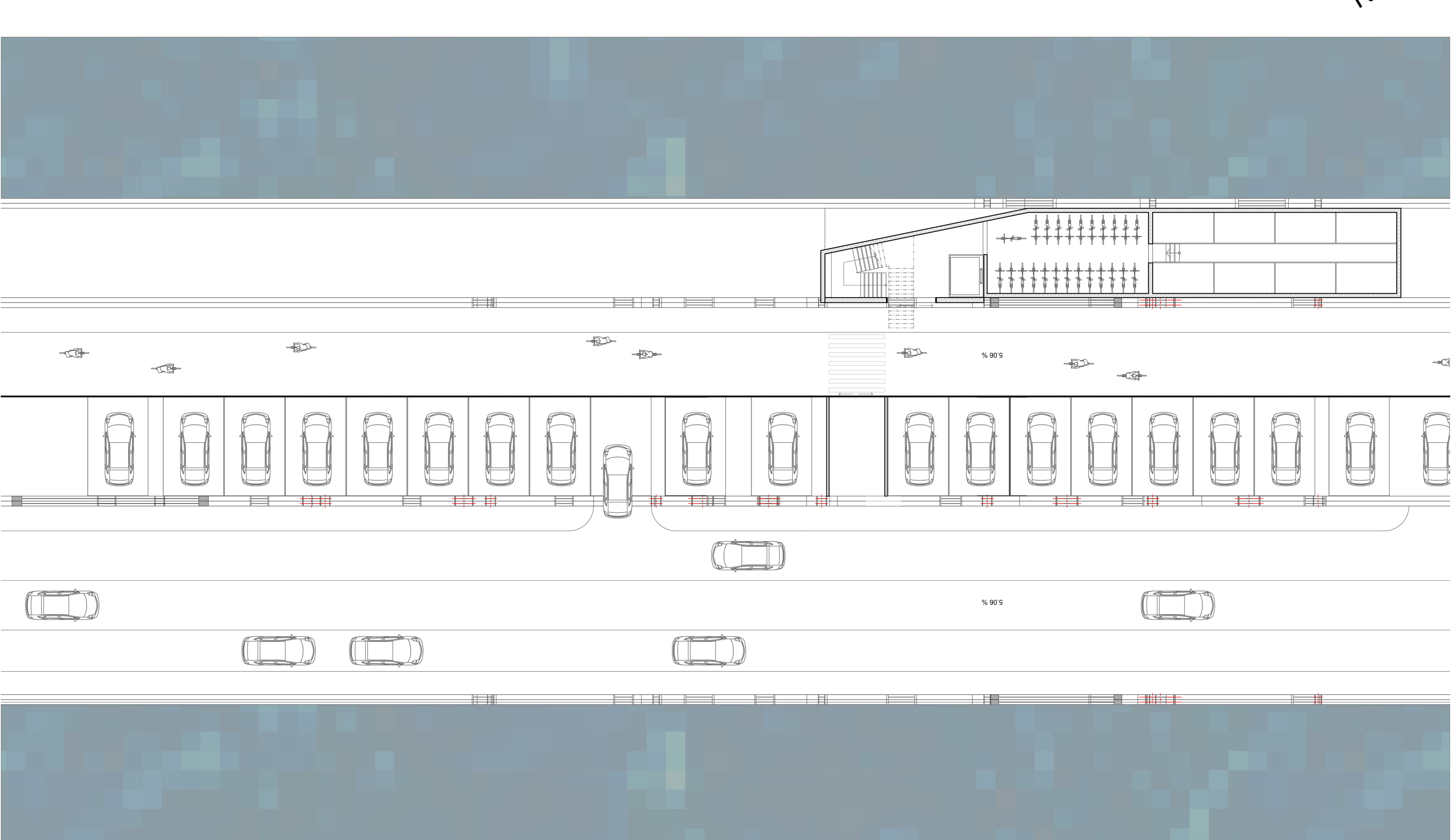
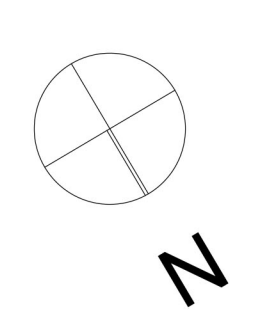
5. FLOOR 1/150

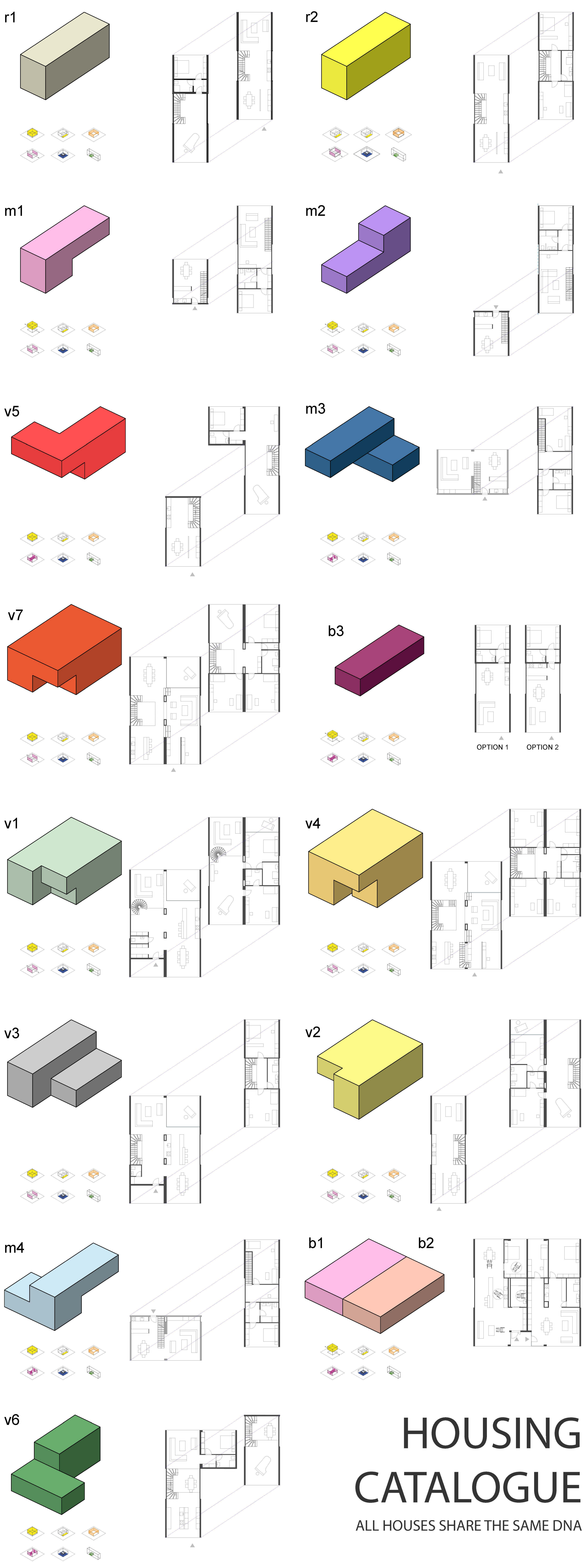


4. FLOOR 1/150



PARKING & STORAGE FLOOR 1/150





OPTION 1    OPTION 2

# HOUSING CATALOGUE

ALL HOUSES SHARE THE SAME DNA

