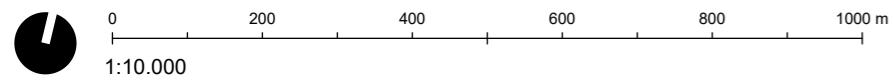
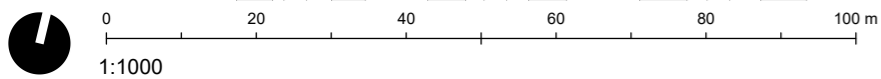


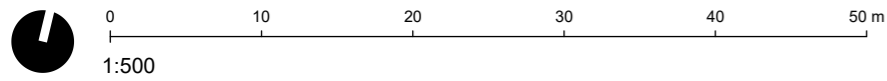
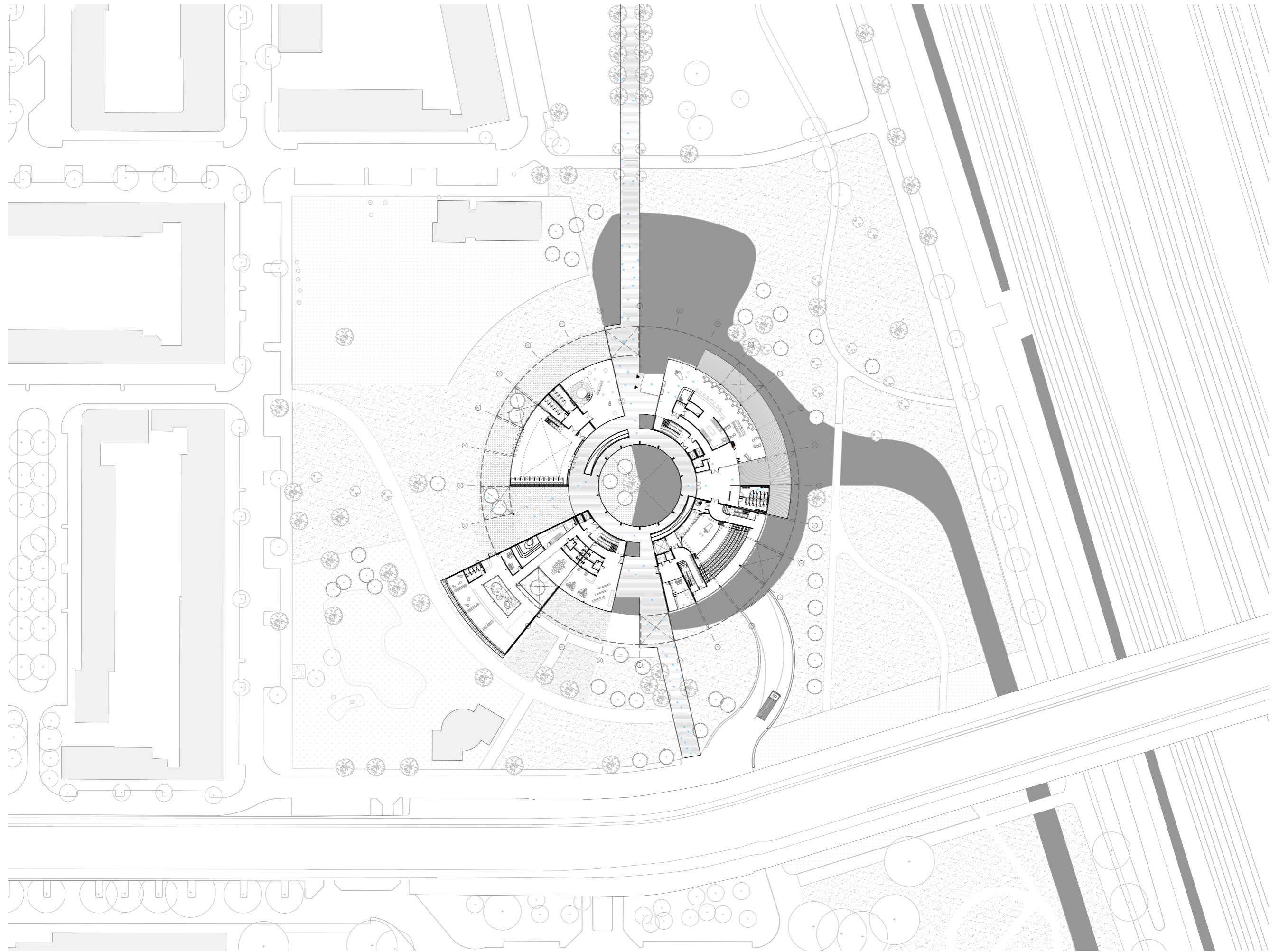
PERFORMING ARTS ACADEMY

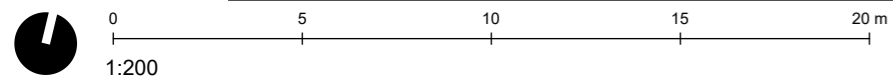
drawing set

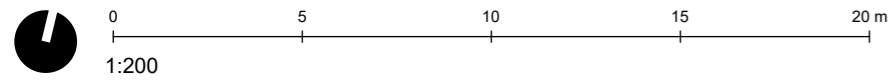
Maarten Abe Nijenhuis
4497082

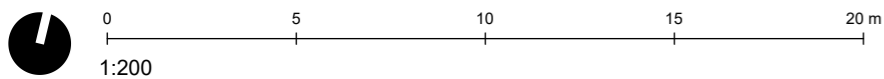
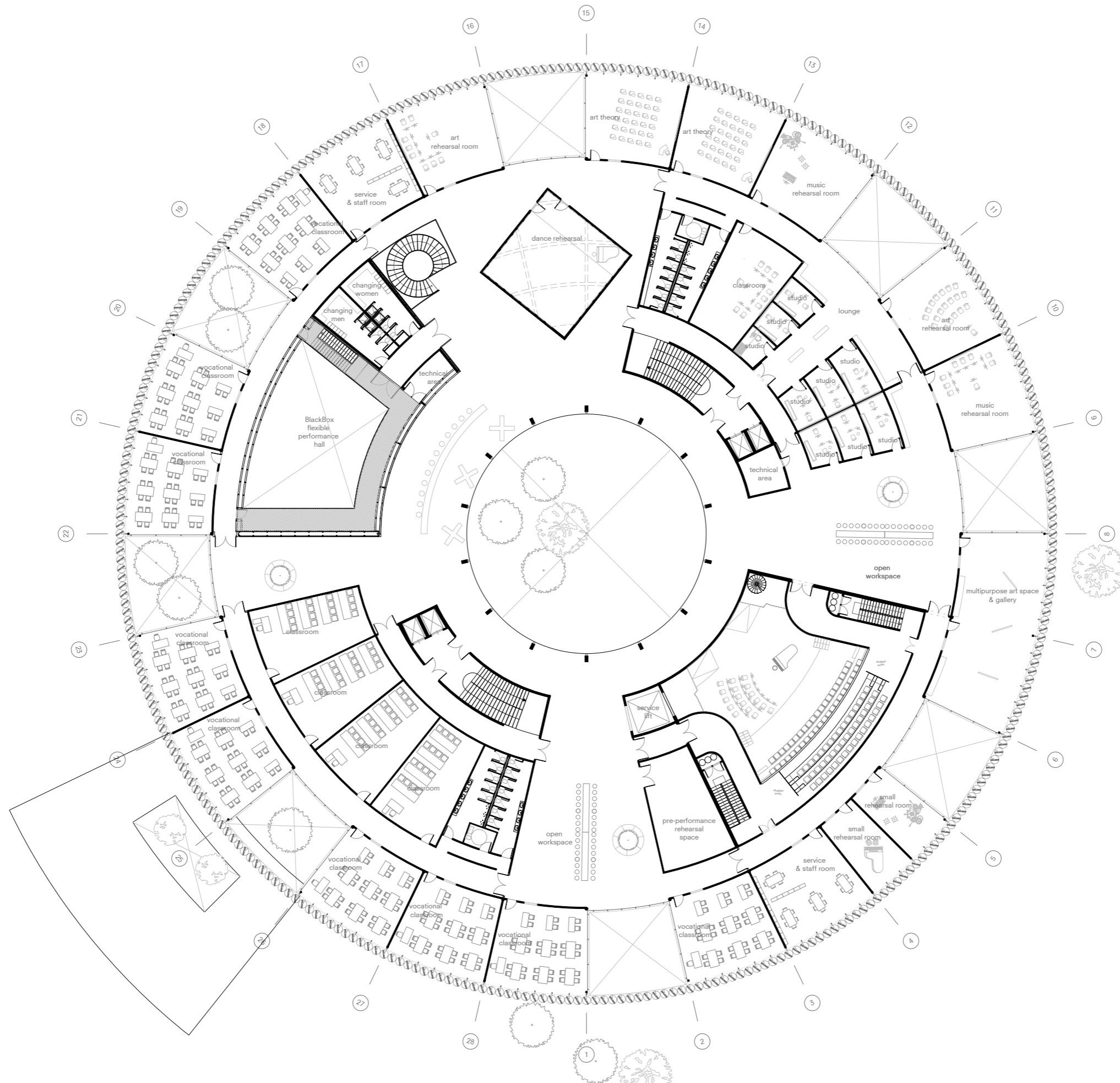


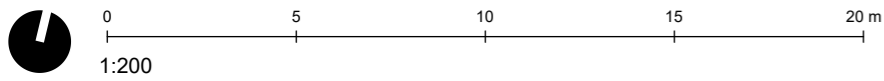
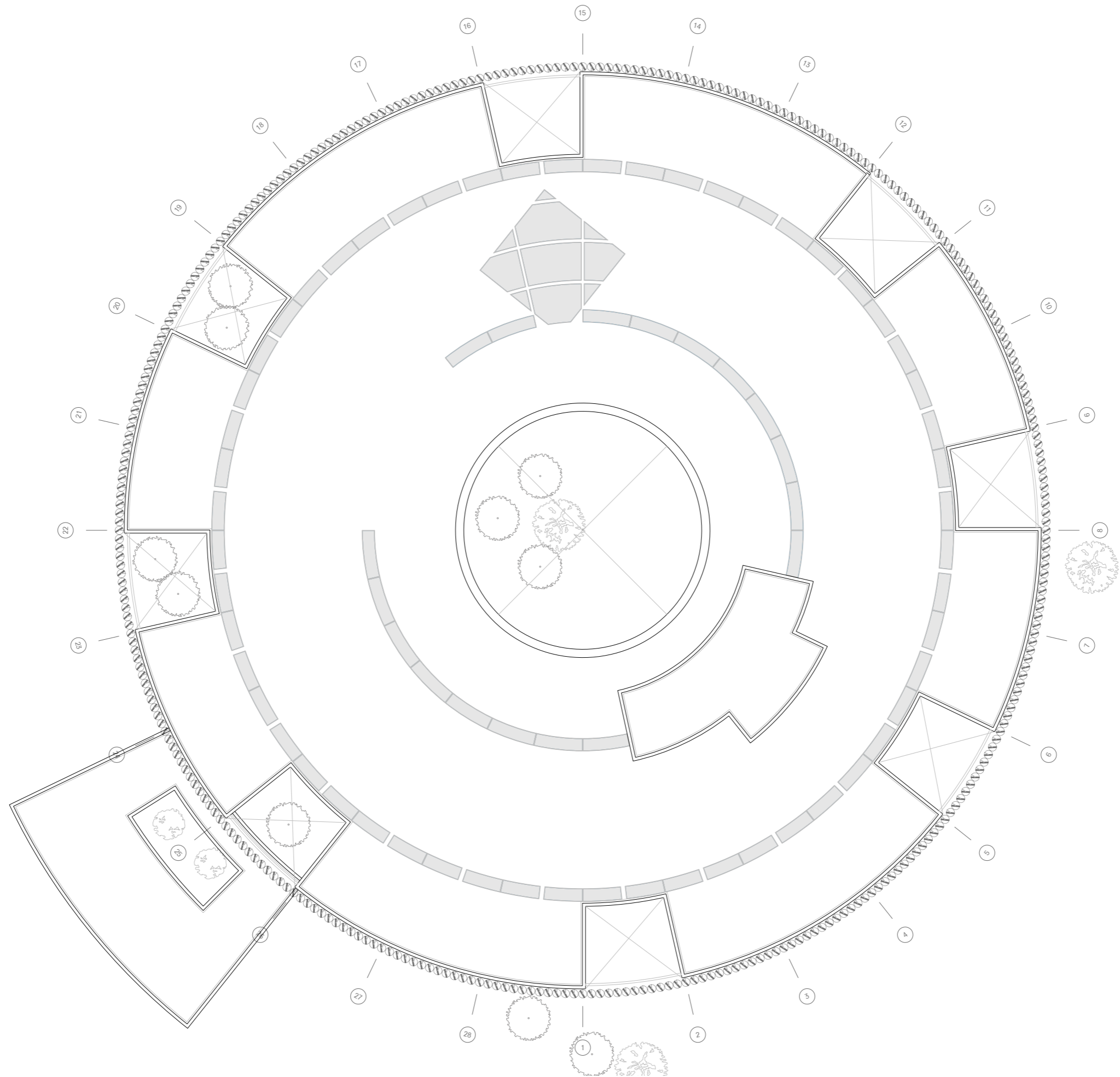


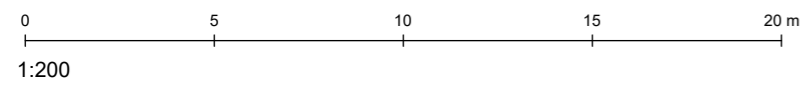
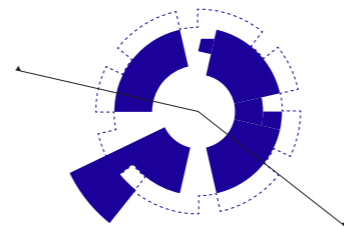
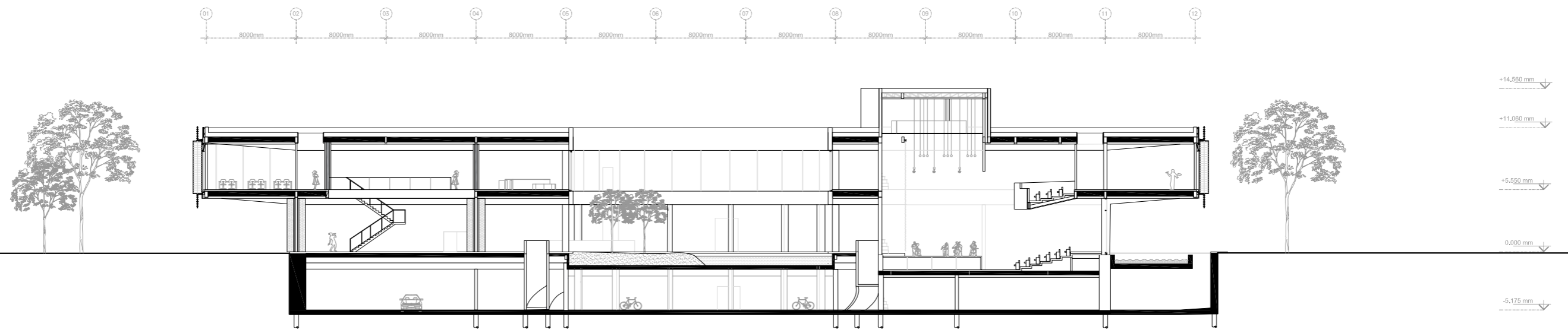


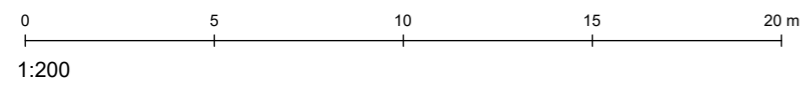
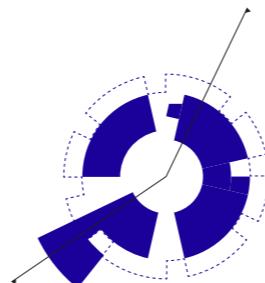
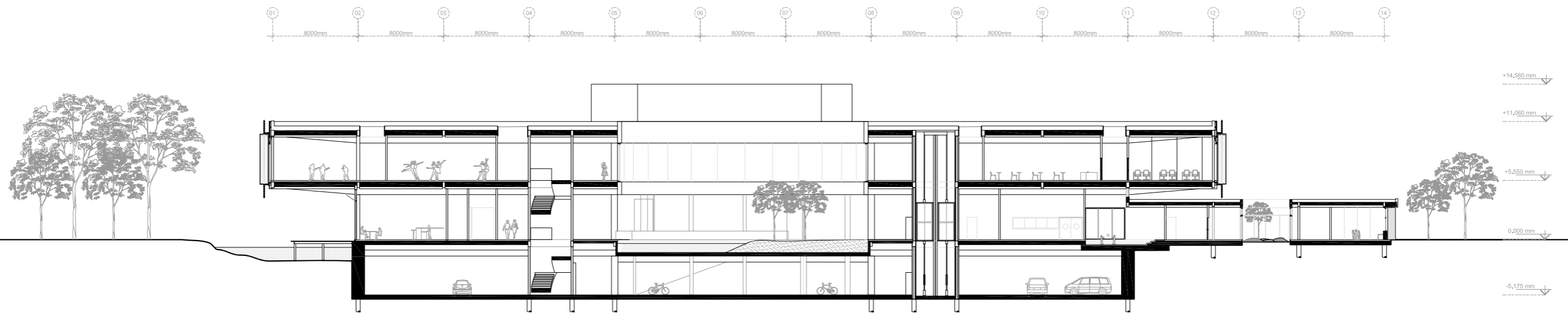


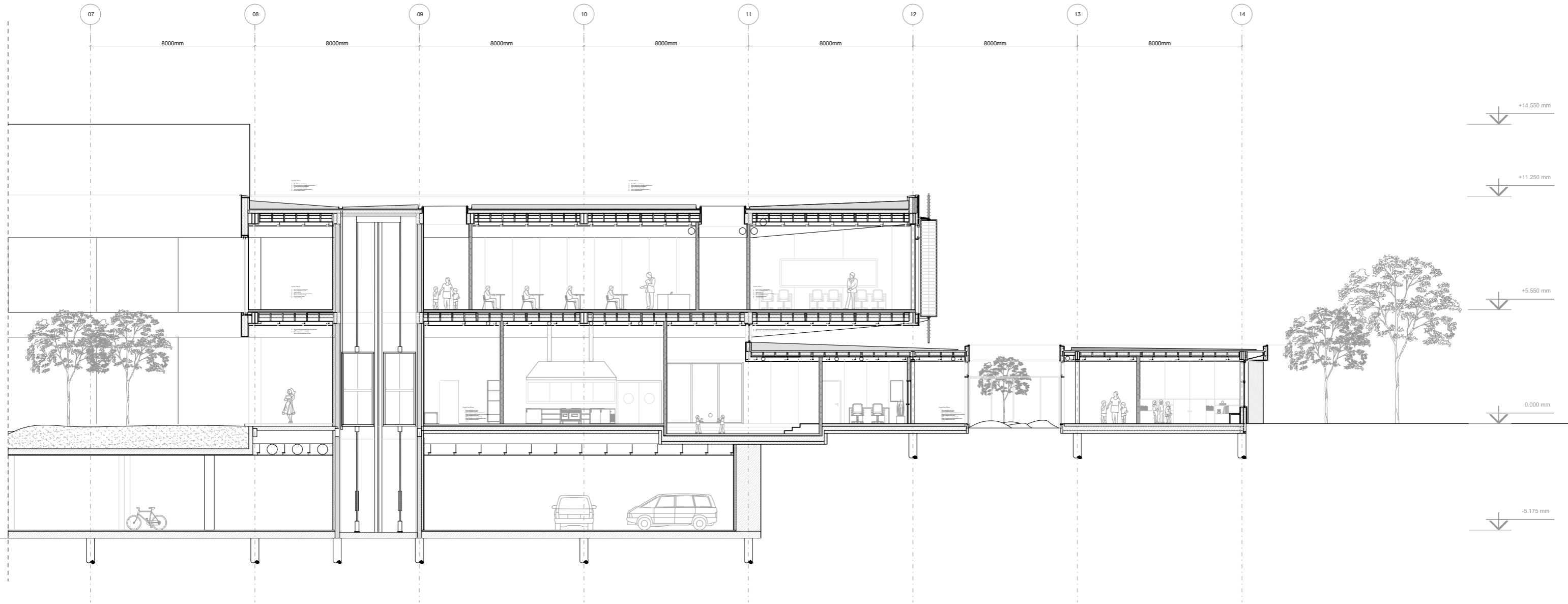




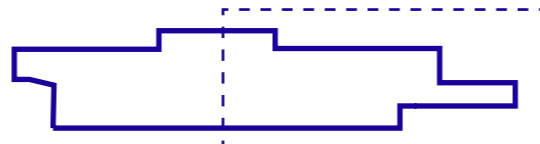


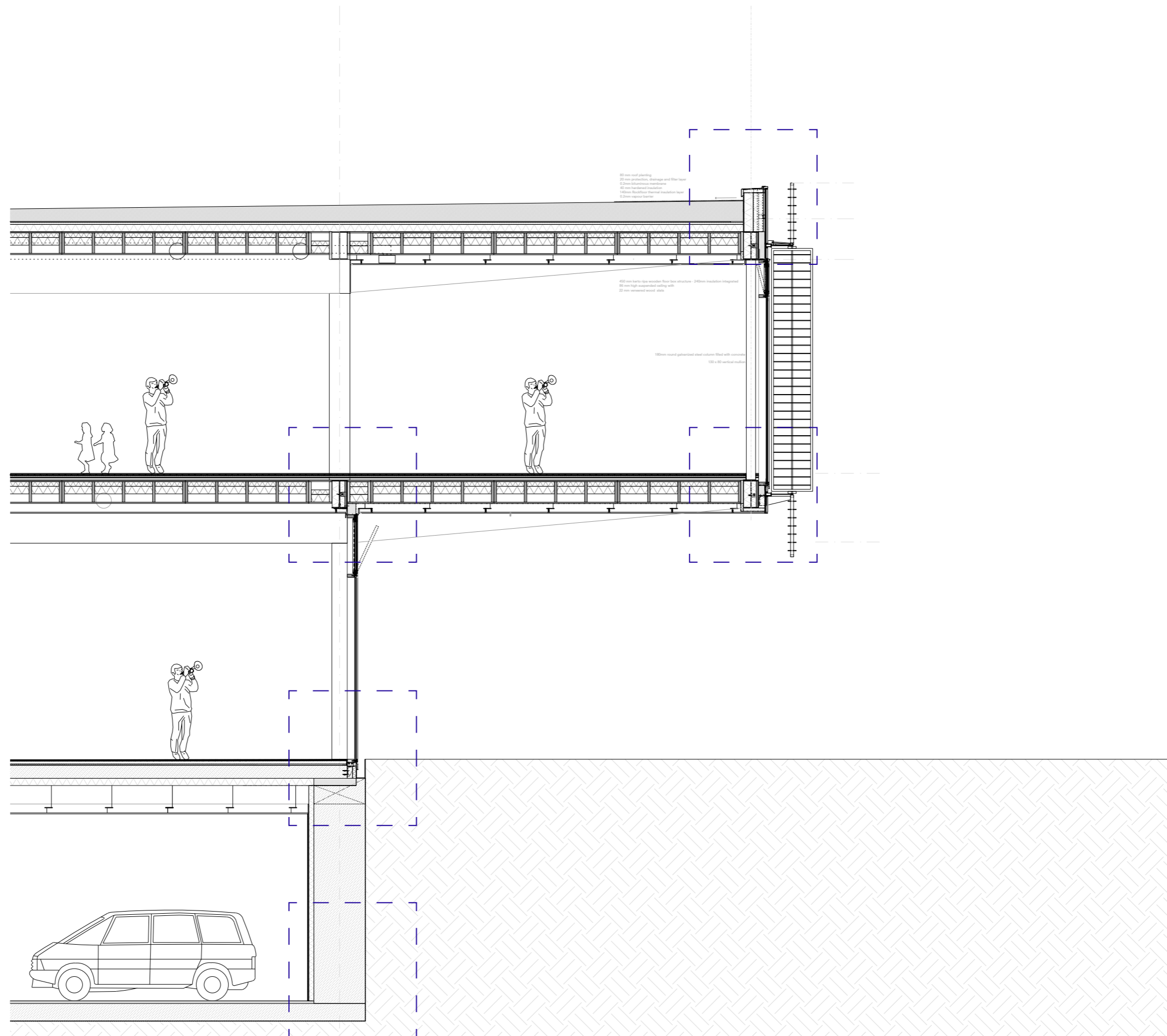






1:50

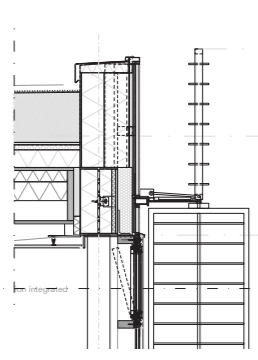




0 20 40 60 80 100 200 cm
1:20

envelope fragment

1:20



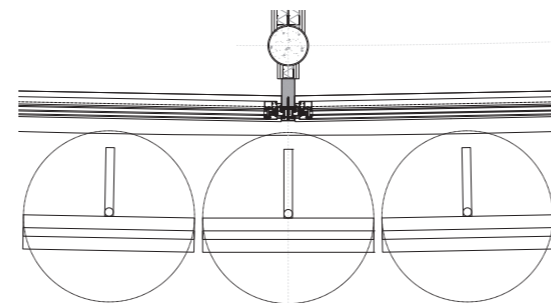
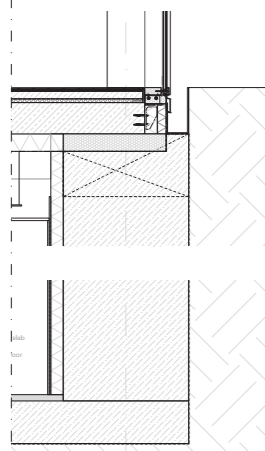
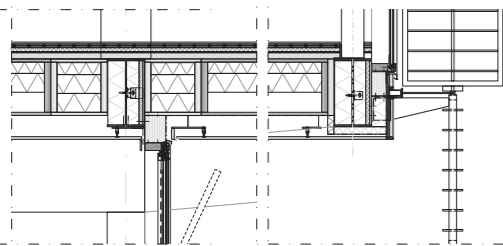
11.250 mm

10.250 mm



5.550 mm

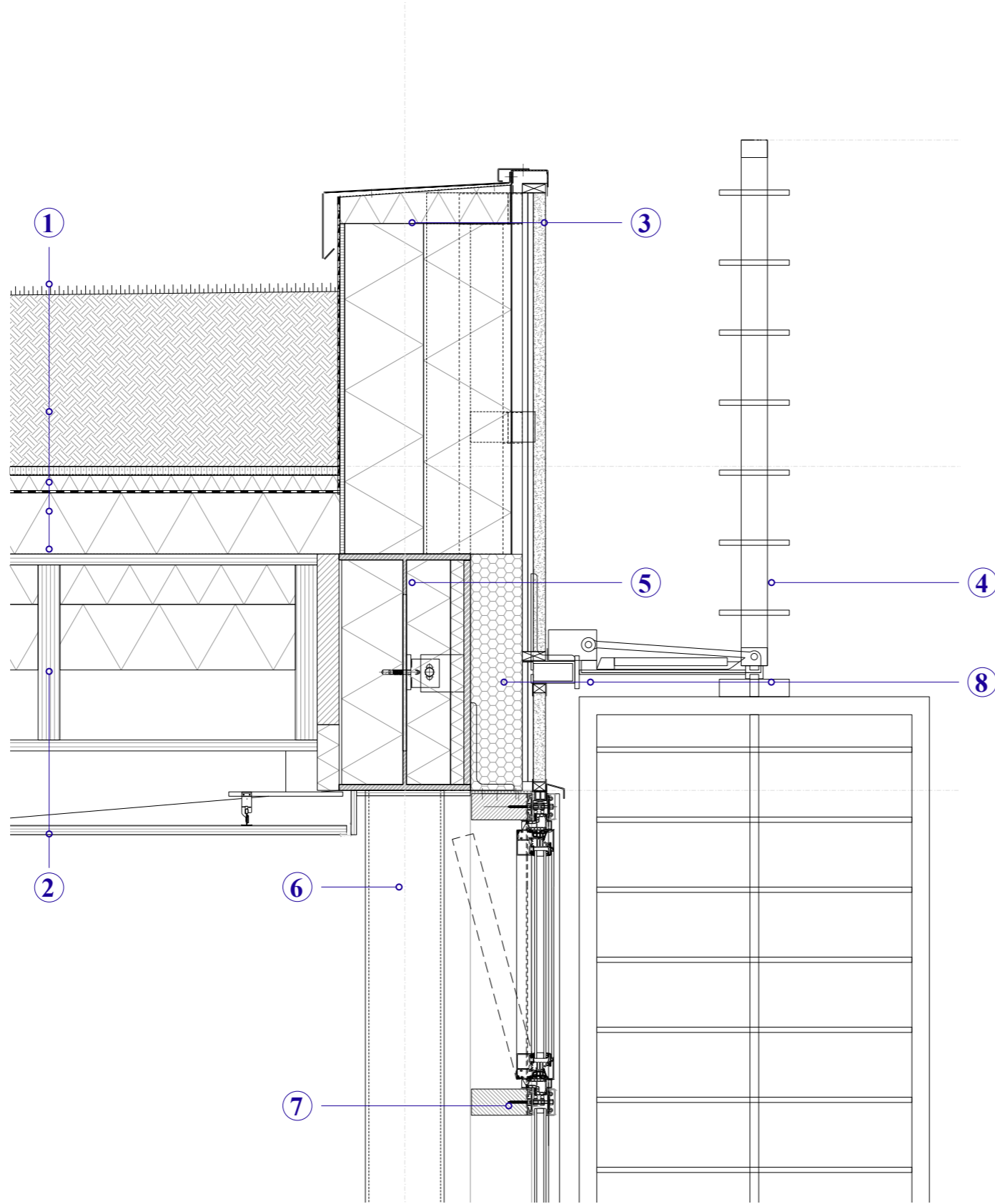
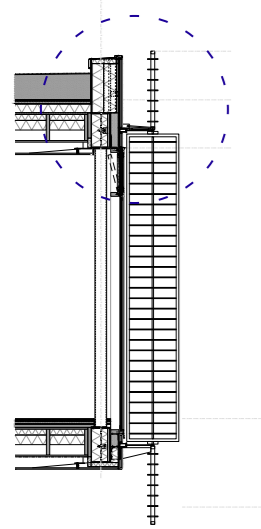
0.000 mm



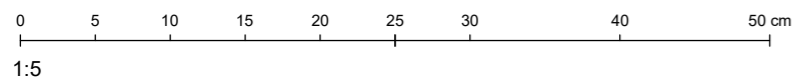
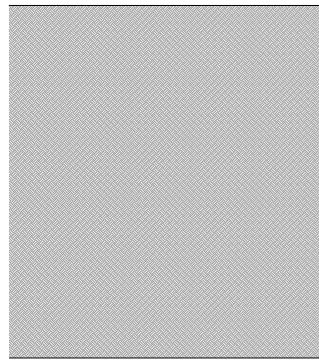
-5.175 mm

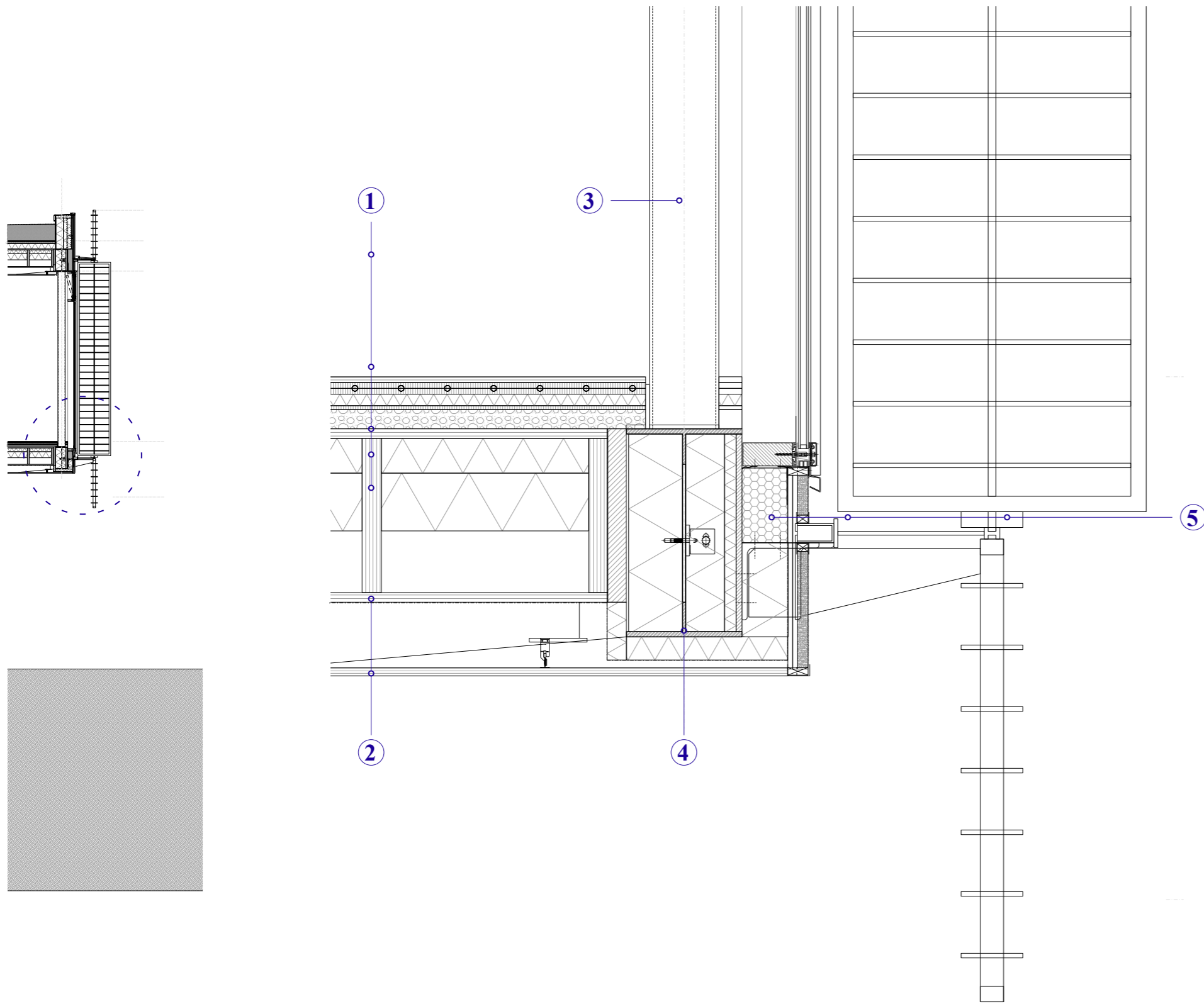
0 20 40 60 80 100 200 cm

1:20

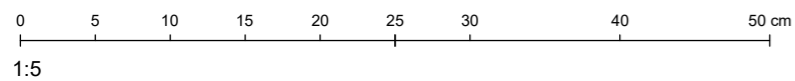


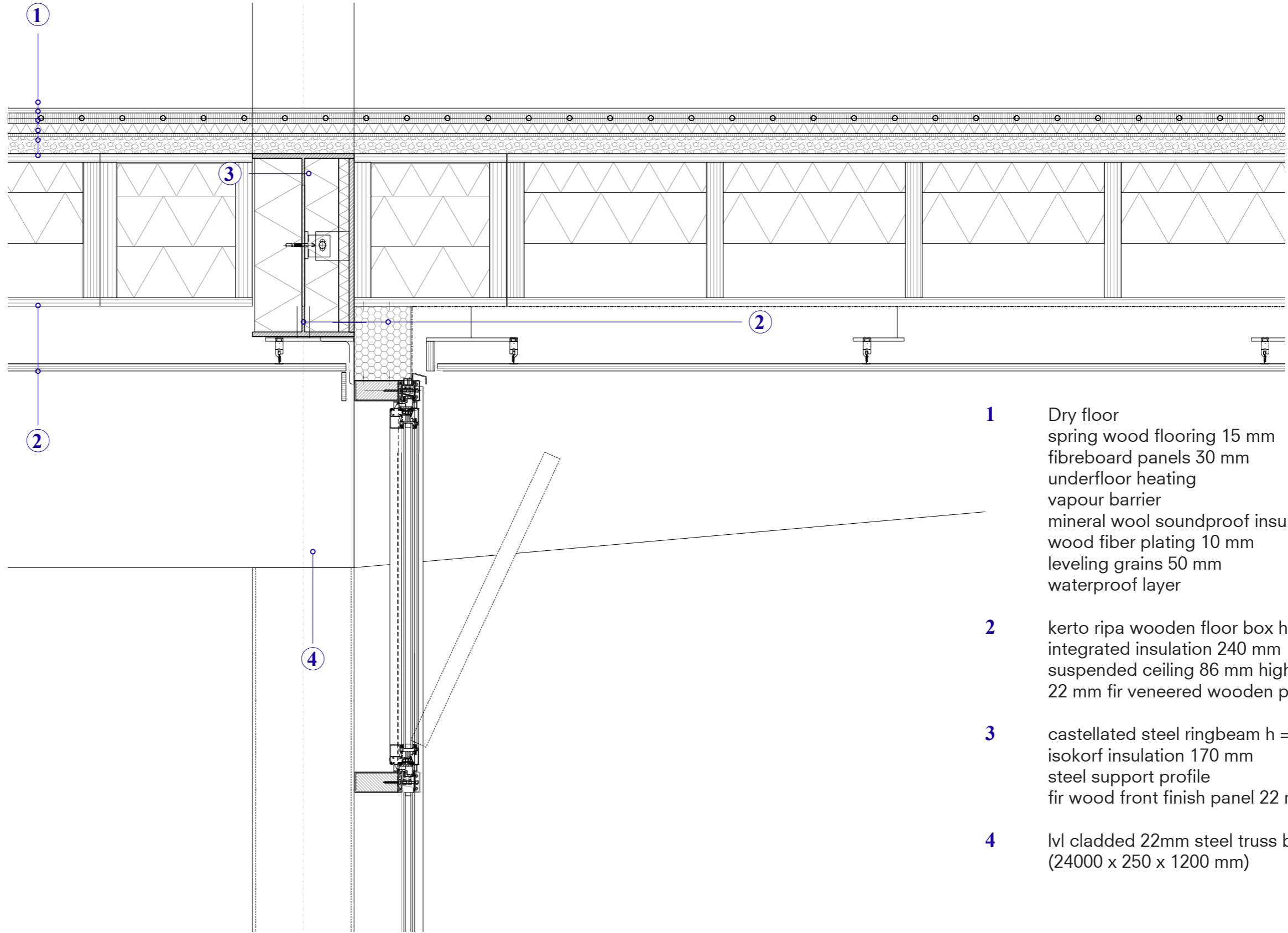
- 1** roof planting 80 mm
protection, drainage and filter layer 20 mm
bituminous membrane
hardened insulation 40 mm
Rockfloor thermal insulation layer 140 mm
vapour barrier 0.2 mm
- 2** kerto ripa wooden floor box h = 450 mm
integrated insulation 240 mm
suspended ceiling 86 mm high,
22 mm fir veneered panels
- 3** facade cladding panel with plastered finish
1100 x 1600 mm
fixed to horizontal and upstanding
rectangular steel profile
- 4** spruce timber louver panel 1200 x 800 mm
- fixed
- 5** castellated steel ringbeam h = 540 mm
- 6** column round section galvanized steel filled
with concrete 180 mm
- 7** wooden vertical window frame mullion
130 x 80 x 4300 mm
- 8** isokorf insulation 140 mm
steel support profile
mechanically operable wooden louver
4720 x 800 mm



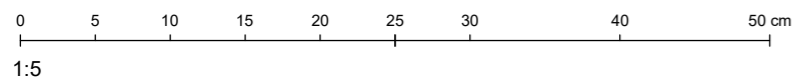


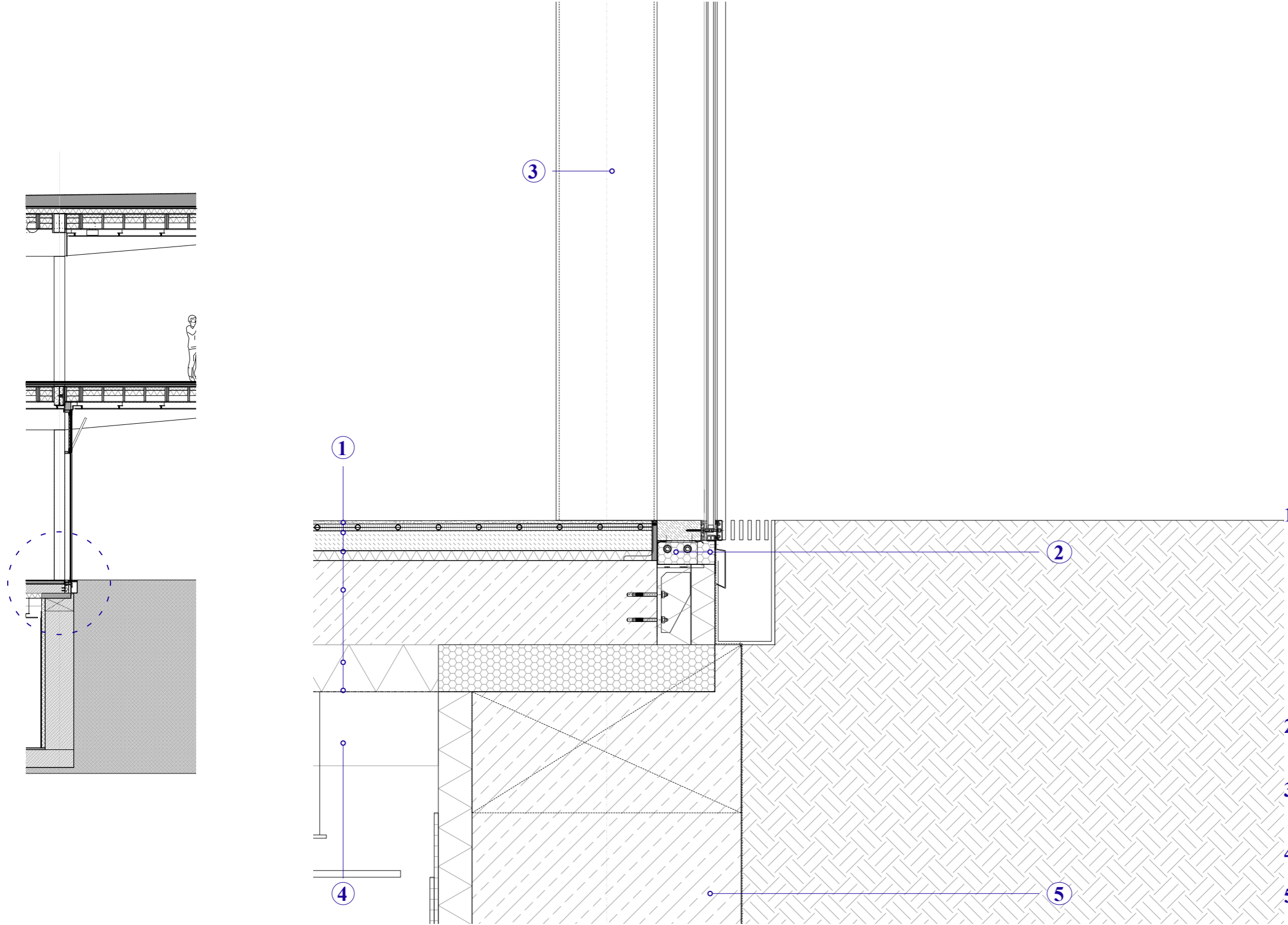
- 1** Dry floor
spring wood flooring 15 mm
fibreboard panels 30 mm
underfloor heating
vapour barrier
mineral wool soundproof insulation 30 mm
wood fiber plating 10 mm
leveling grains 50 mm
waterproof layer
- 2** kerto ripa wooden floor box structure,
integrated insulation 240 mm
suspended ceiling 22 mm, 86 mm high
fir veneered panels
- 3** column round section galvanized steel filled
with concrete 180 mm
- 4** castellated steel ringbeam h = 540 mm
- 5** isokorf insulation 140 mm
steel support profile
mechanically operated wooden louver 4720
x 800 mm
fixed wooden louver 1200 x 800 mm



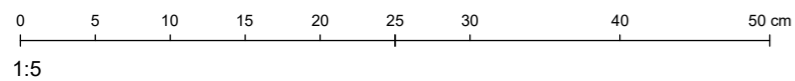


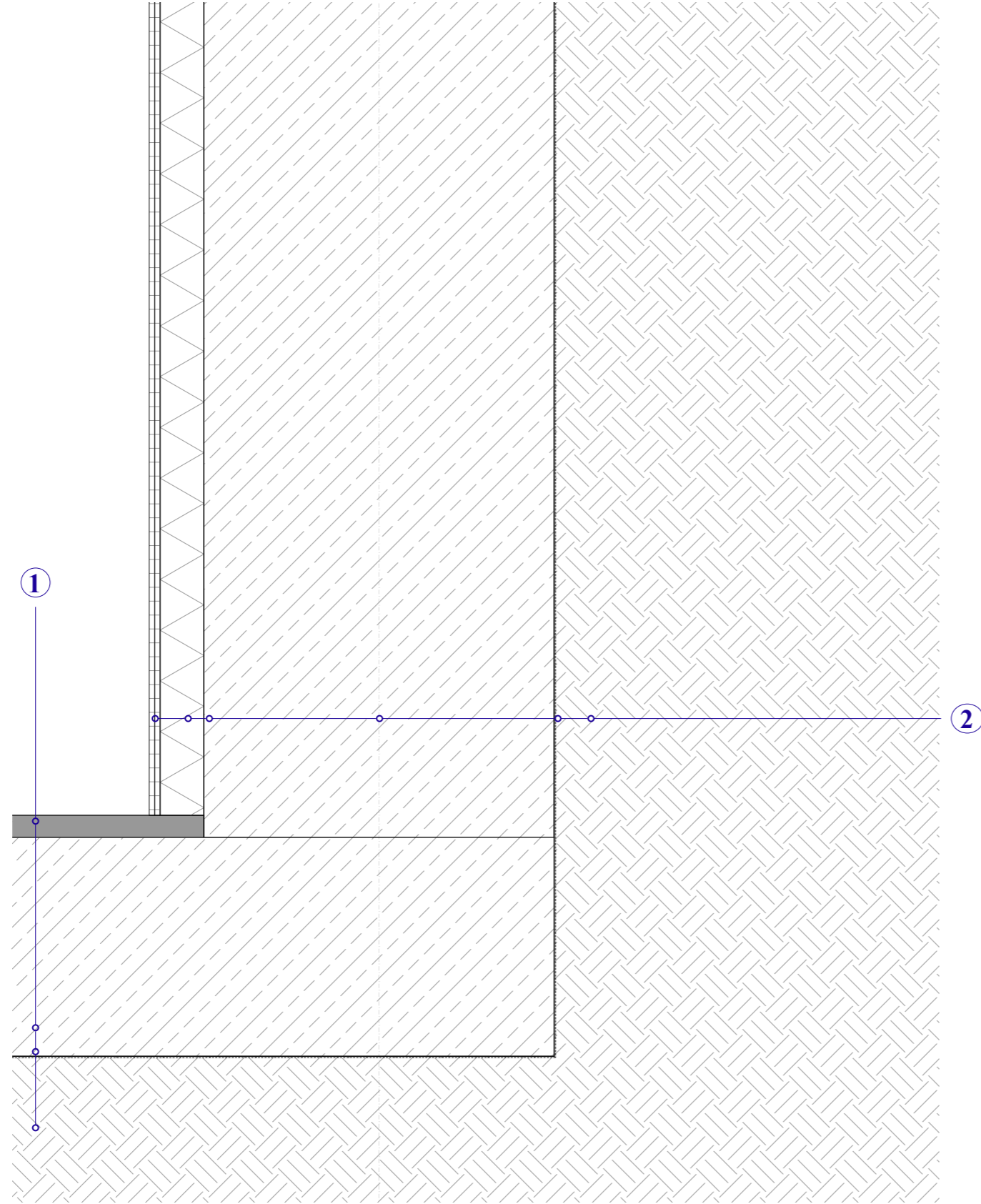
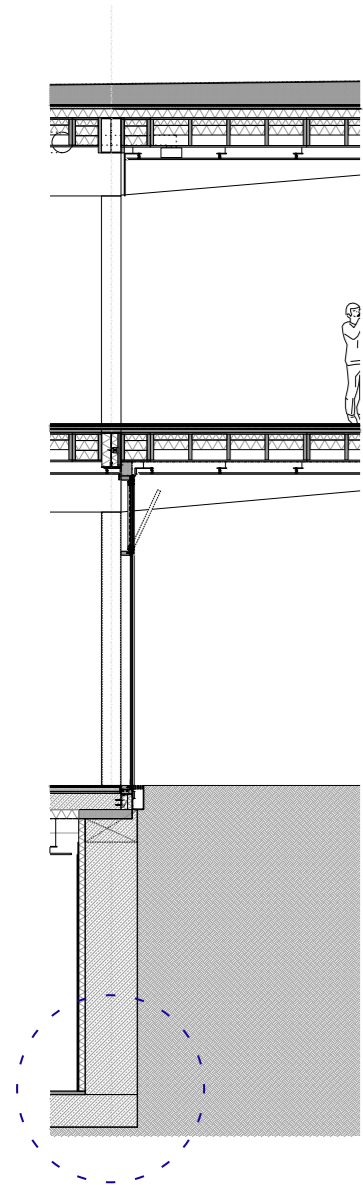
- 1** Dry floor
spring wood flooring 15 mm
fibreboard panels 30 mm
underfloor heating
vapour barrier
mineral wool soundproof insulation 30 mm
wood fiber plating 10 mm
leveling grains 50 mm
waterproof layer
- 2** kerto ripa wooden floor box h = 450 mm
integrated insulation 240 mm
suspended ceiling 86 mm high,
22 mm fir veneered wooden panels
- 3** castellated steel ringbeam h = 540 mm
isokorf insulation 170 mm
steel support profile
fir wood front finish panel 22 mm
- 4** lvl clad 22mm steel truss beam
(24000 x 250 x 1200 mm)



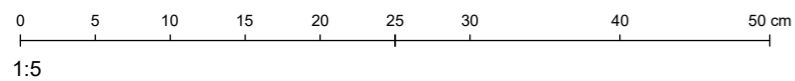


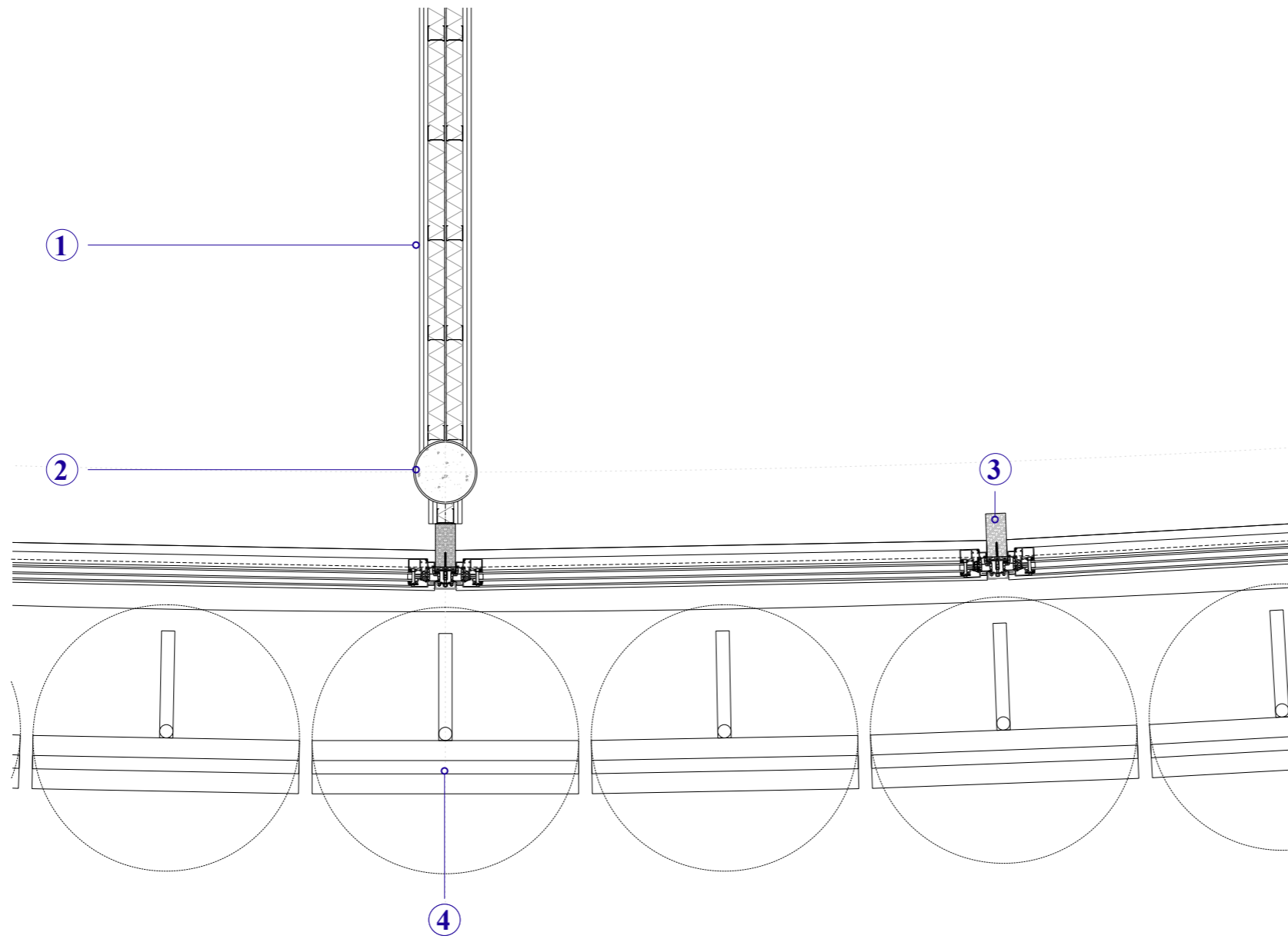
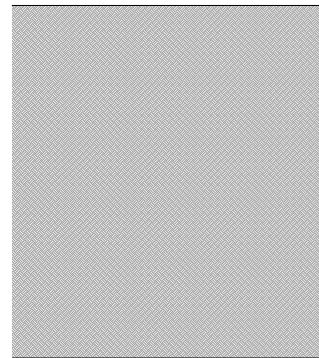
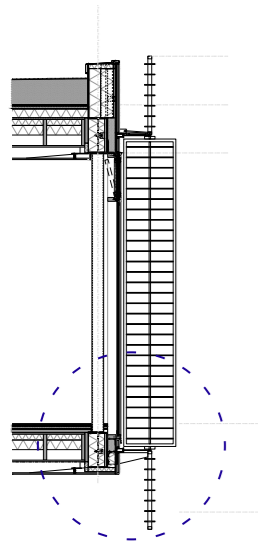
- 1 terrazzo finish 15 mm
fibreboard panels 30 mm
polymer dampproof membrane 0.2 mm
Rockfloor extra soundproofing insulation 30 mm
waterproofing layer 0.2 mm
prestressed concrete slab 250 mm
Rockfloor thermal insulation layer 140 mm
waterproofing layer 0.2 mm
- 2 curtain wall double glazed
rigid insulation 170 x 70 mm
- 3 column round section galvanized steel filled with concrete 180 mm
- 4 steelfiber concrete wall t = 800 mm
- 5 pre-stressed concrete beam h = 350 mm





- 1** soundproof plaster finish
gypsum board 2x 12.5mm
insulation
dampproof layer
steelfiber concrete wall 800mm thick
waterproof layer
soil
- 2** in situ cast concrete slab 50mm
steelfiber concrete floor h = 500mm
waterproof layer
soil





- 1** metalstud framed partition wall t = 155 mm
pine fir finish 15 mm
- 2** column round section galvanized steel filled
with concrete 180 mm
- 3** wooden vertical window frame mullion
130 x 80 x 4300 mm
- 4** steel extrusion profile to hang louvers
steel guiding rail
mechanically operated shading louver
panels of fir timber 4720 x 800 mm
and lamellae 720 x 160 x 12 mm

