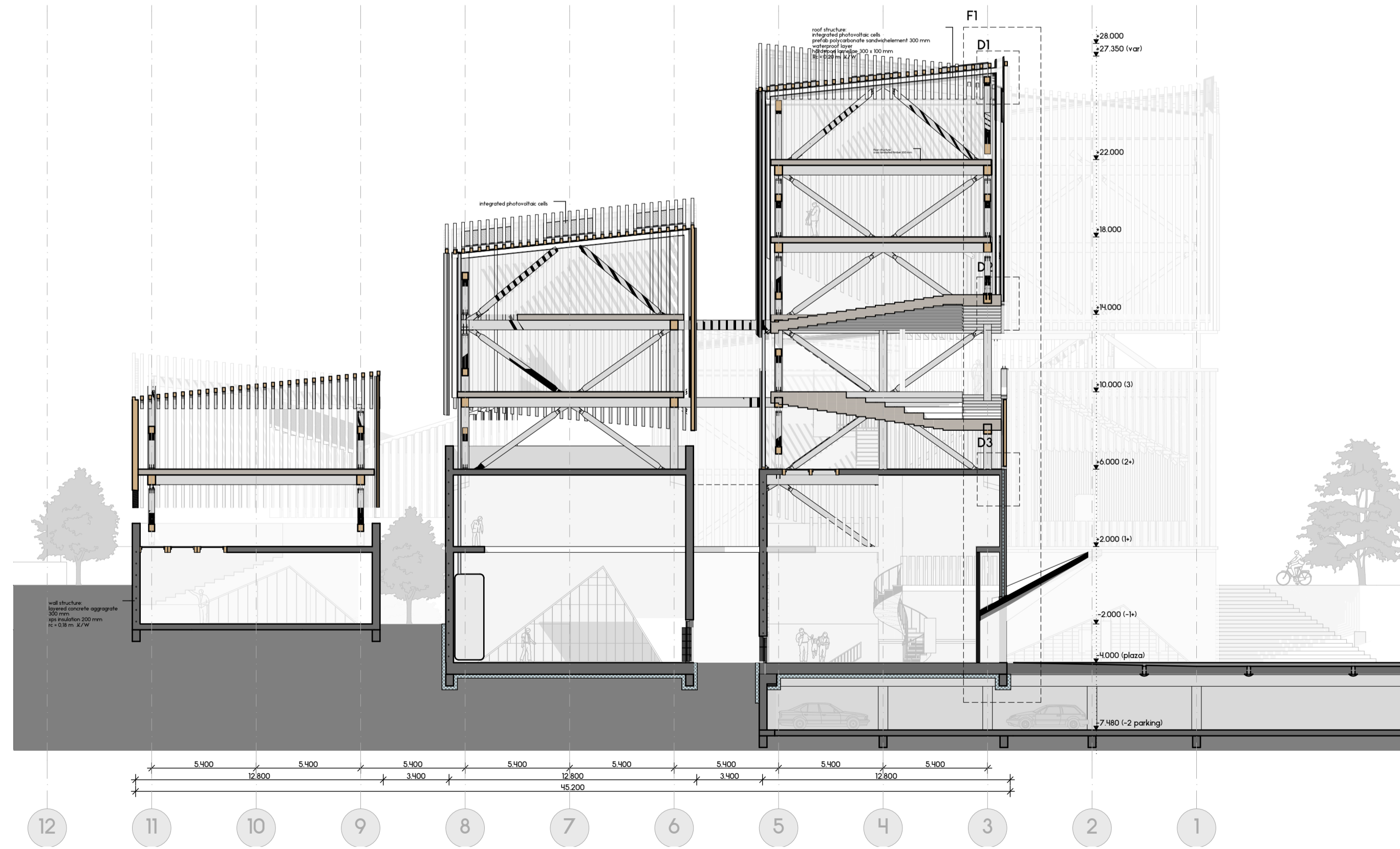
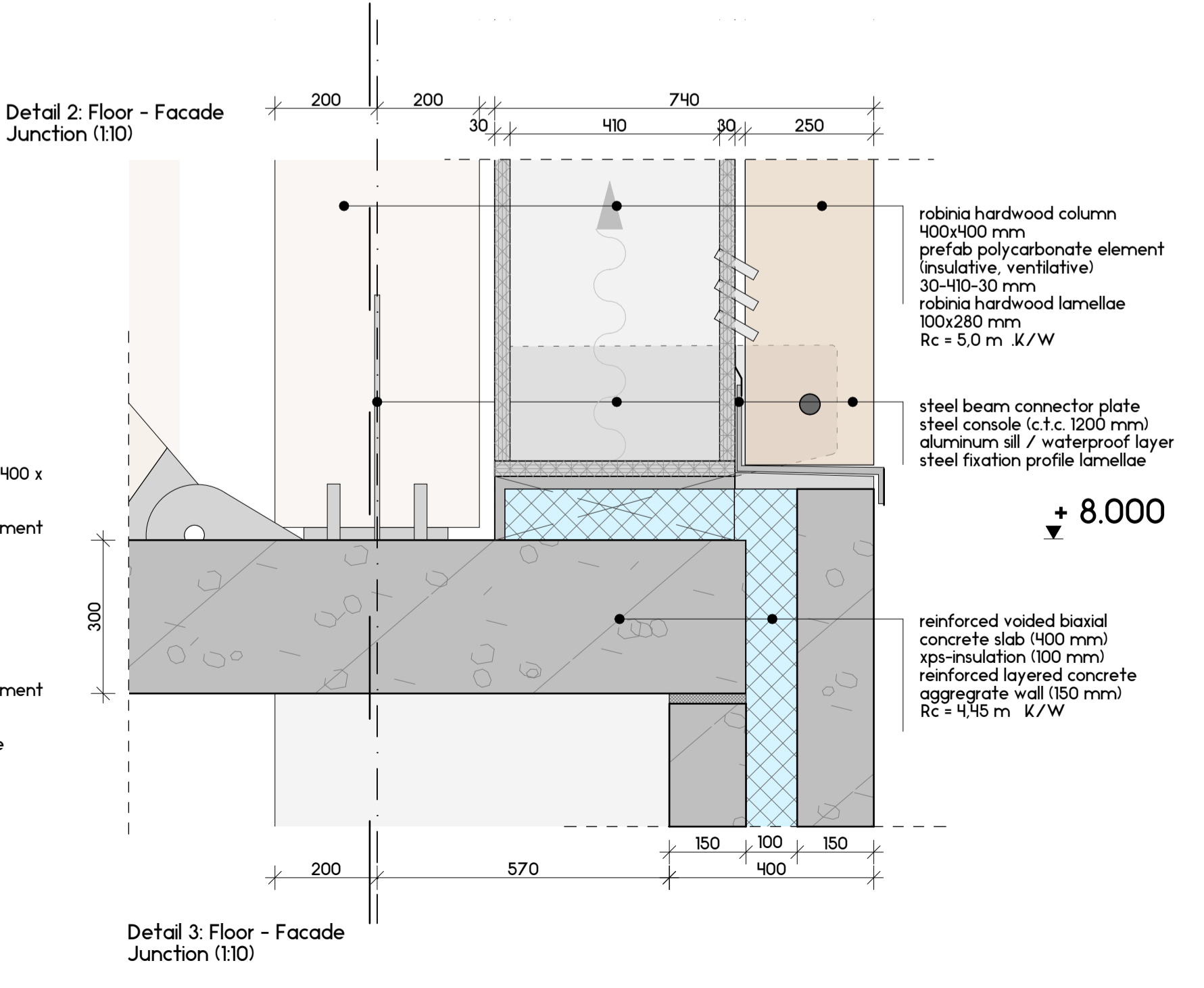
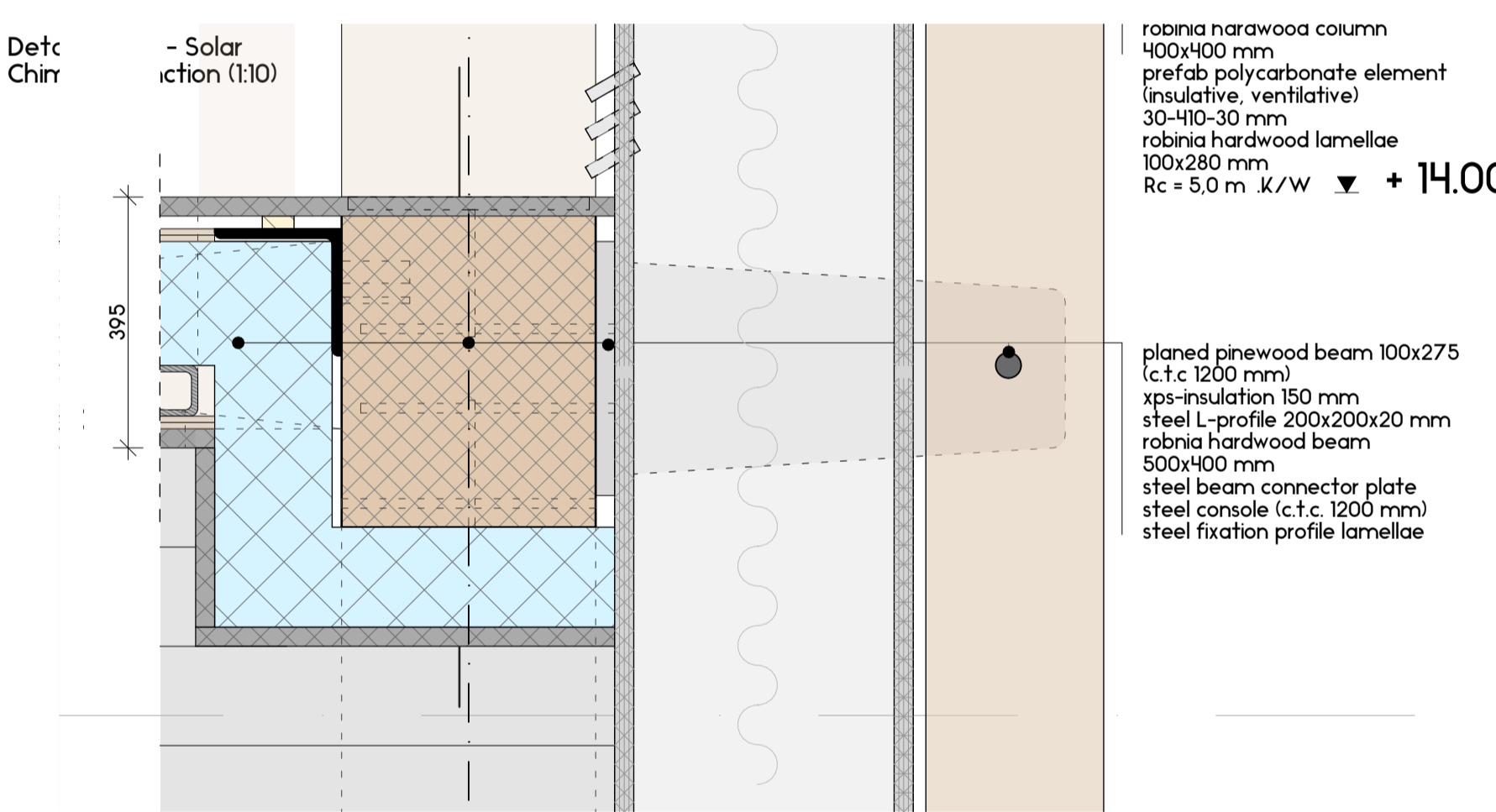
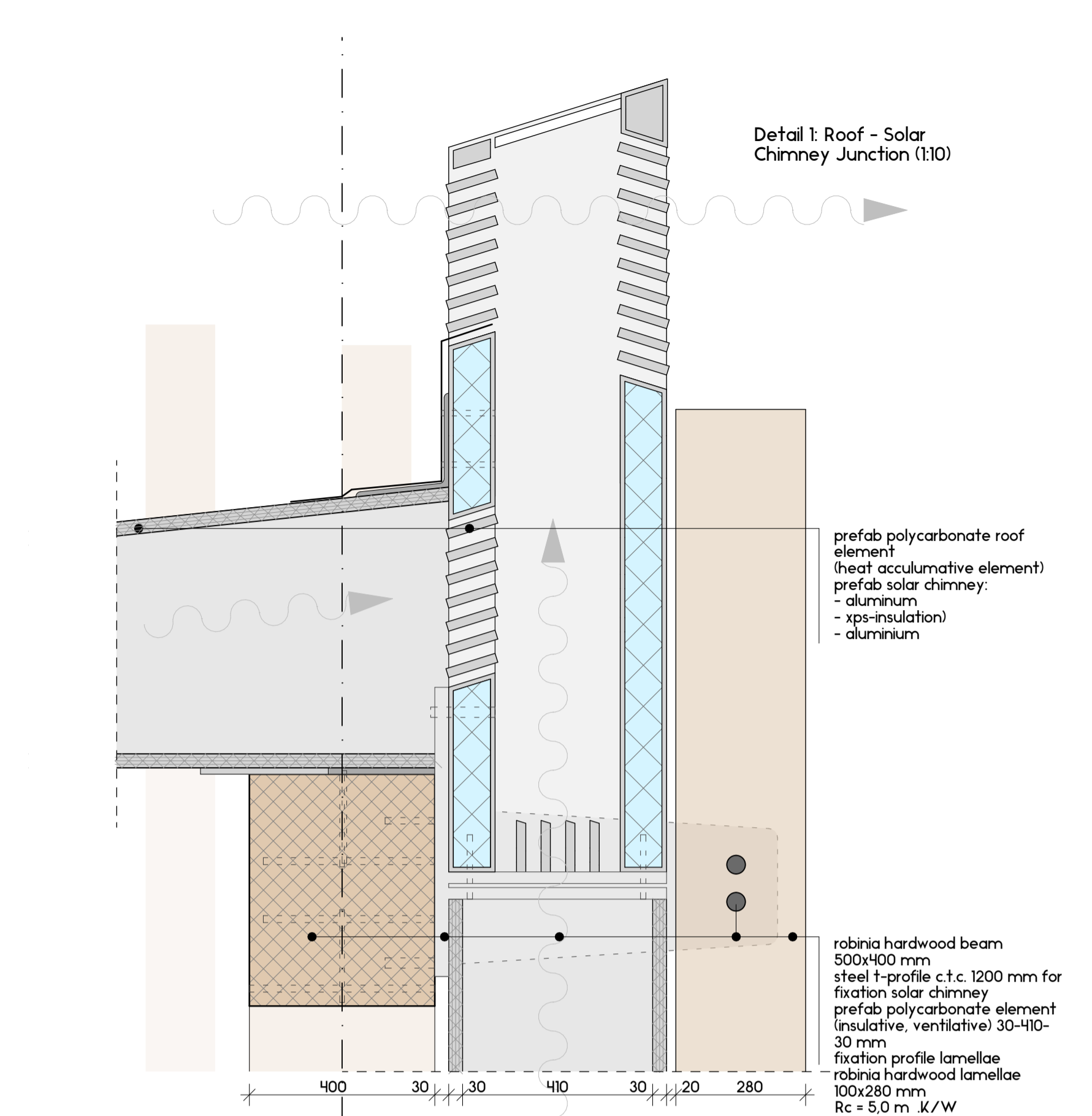
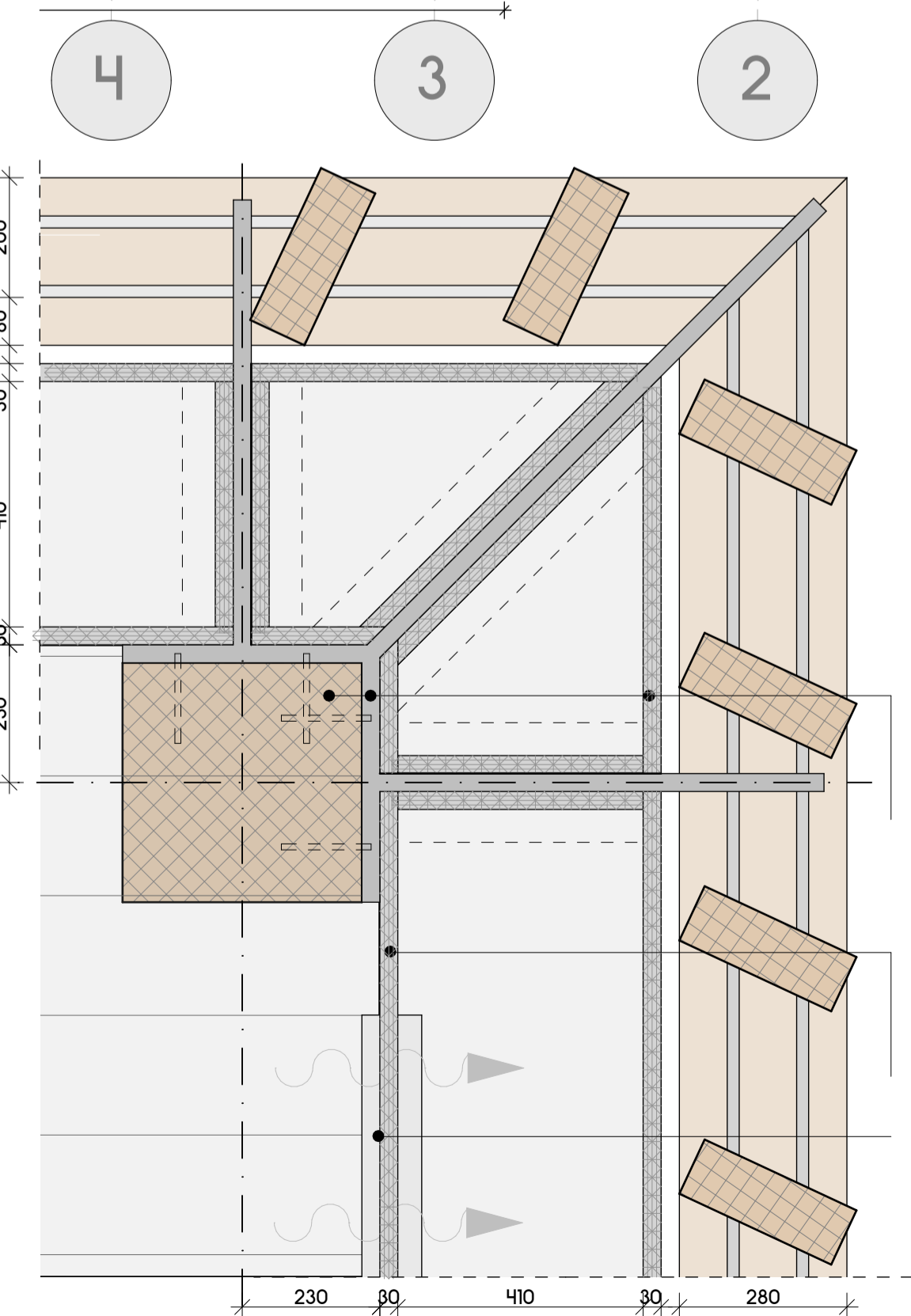
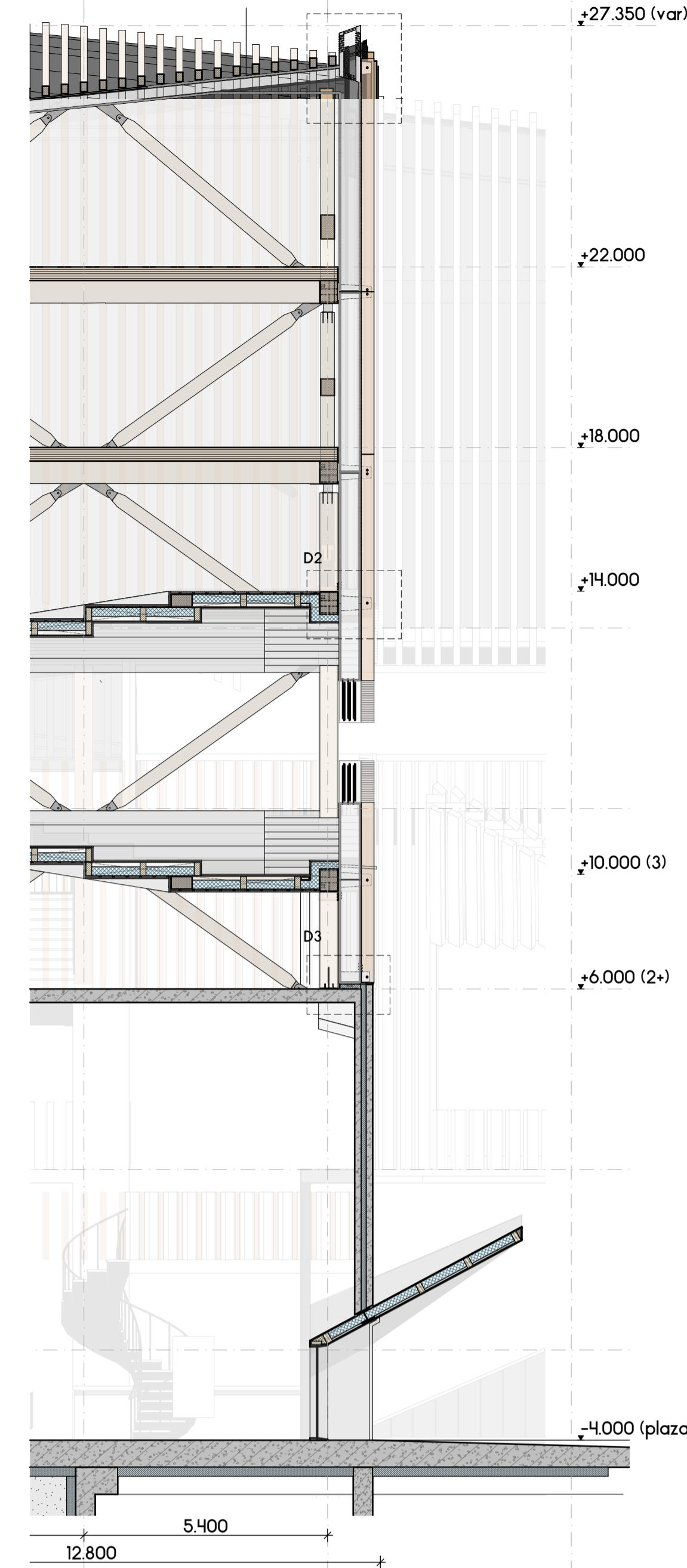


Section B-B (Cross) (1:200)



Section A-A (Longitudinal) (1:200)



Detail 1: Roof - Solar Chimney Junction (1:10)

prefab polycarbonate roof element (heat accumulative element)
prefab solar chimney:
- aluminum
- xps-insulation
- aluminum

robinia hardwood beam 500x400 mm
steel I-profile c.t.c. 1200 mm for fixation solar chimney
prefab polycarbonate element (insulative, ventilative) 30-410-30 mm
fixation profile lamellae 100x280 mm
Rc = 5,0 m² K/W

robinia hardwood column 400x400 mm
prefab polycarbonate element (insulative, ventilative) 30-410-30 mm
robinia hardwood lamellae 100x280 mm
Rc = 5,0 m² K/W

planned pinewood beam 100x275 (c.t.c. 1200 mm)
xps-insulation 150 mm
steel L-profile 200x200x20 mm
robinia hardwood beam 500x400 mm
steel beam connector plate
steel console (c.t.c. 1200 mm)
steel fixation profile lamellae

robinia hardwood column 400 x 400 mm
steel console (corner)
prefab polycarbonate element (corner)

prefab polycarbonate element (insulative, ventilative) 30-410-30 mm
robinia hardwood lamellae 100x280 mm
Rc = 5,0 m² K/W

automated air inlet

robinia hardwood column 400x400 mm
prefab polycarbonate element (insulative, ventilative) 30-410-30 mm
robinia hardwood lamellae 100x280 mm
Rc = 5,0 m² K/W

steel beam connector plate
steel console (c.t.c. 1200 mm)
aluminum sill / waterproof layer
steel fixation profile lamellae

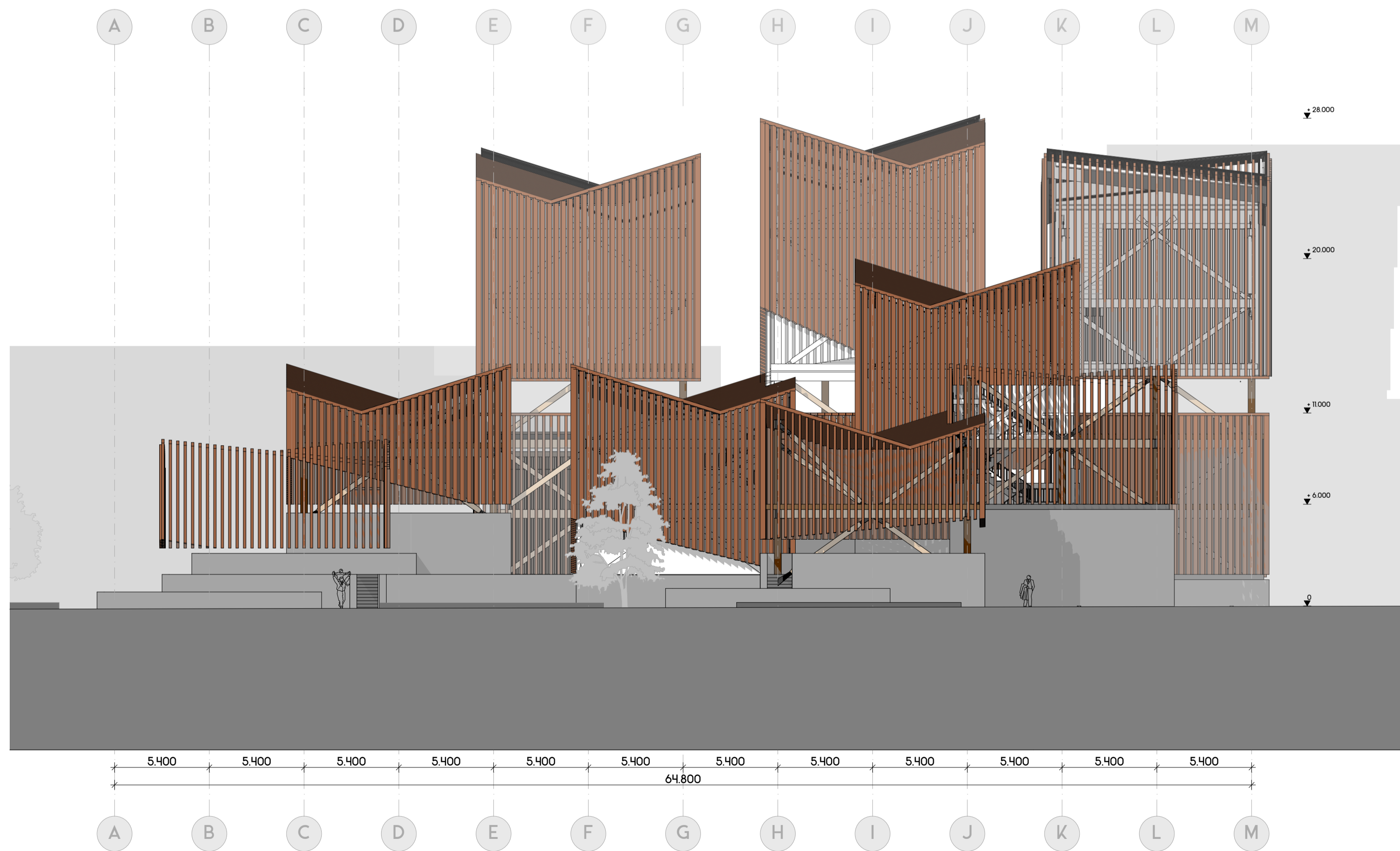
reinforced voided biaxial concrete slab (100 mm)
xps-insulation (100 mm)
reinforced layered concrete aggregate wall (150 mm)
Rc = 4,45 m² K/W



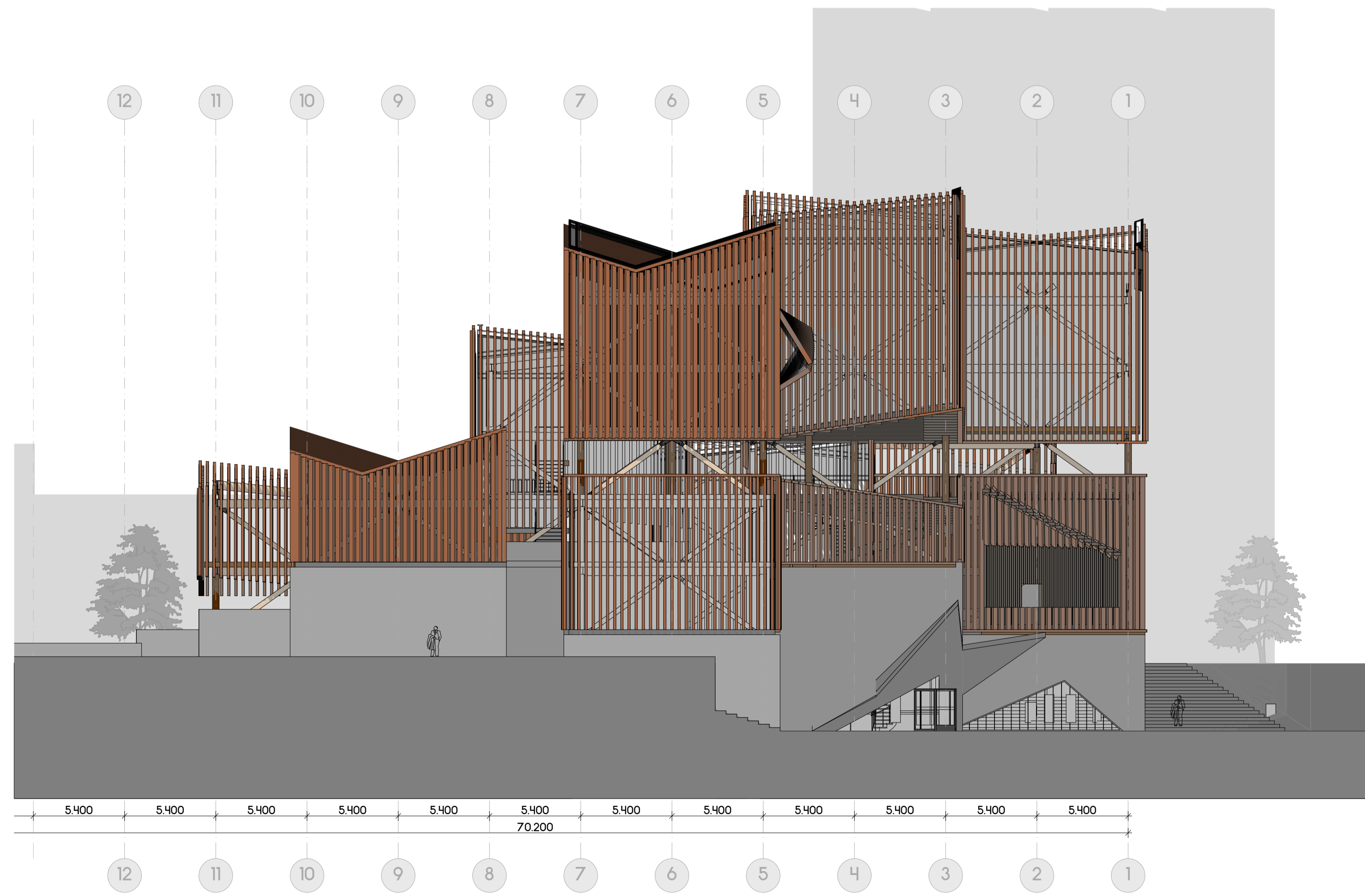
Elevation (West) (1:200)



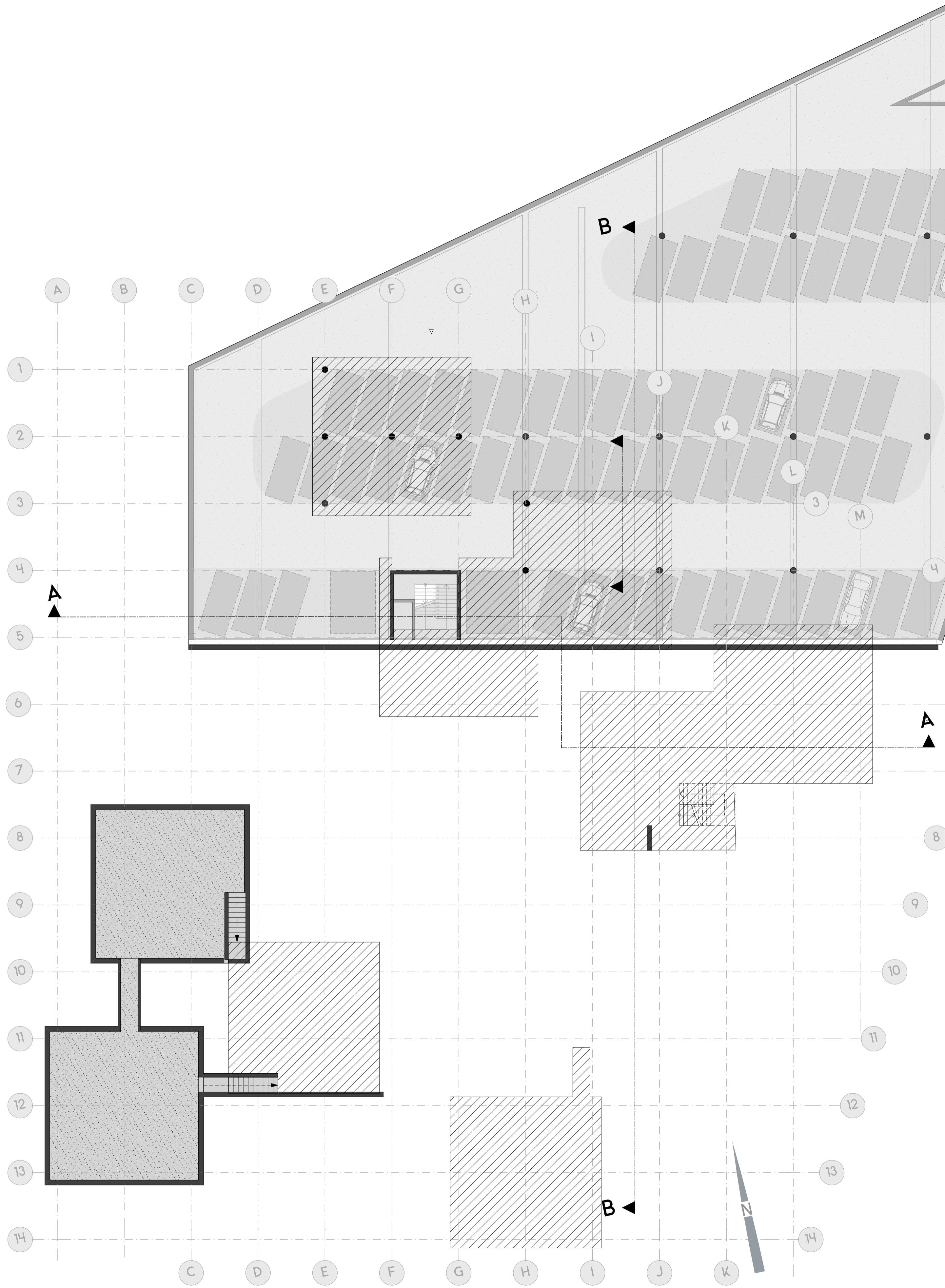
Elevation (North) (1:200)



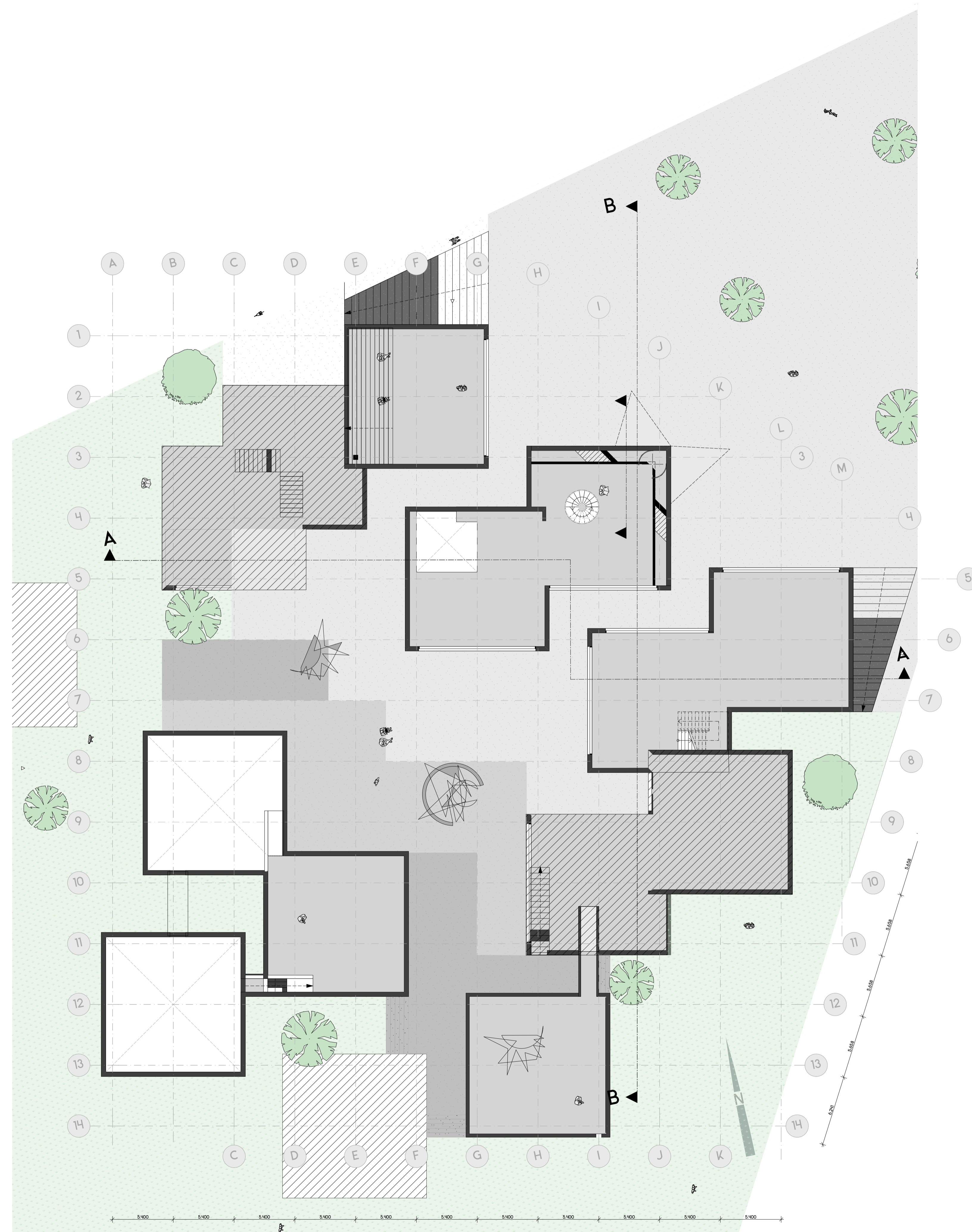
Elevation (South) (1:200)



Elevation (East) (1:200)



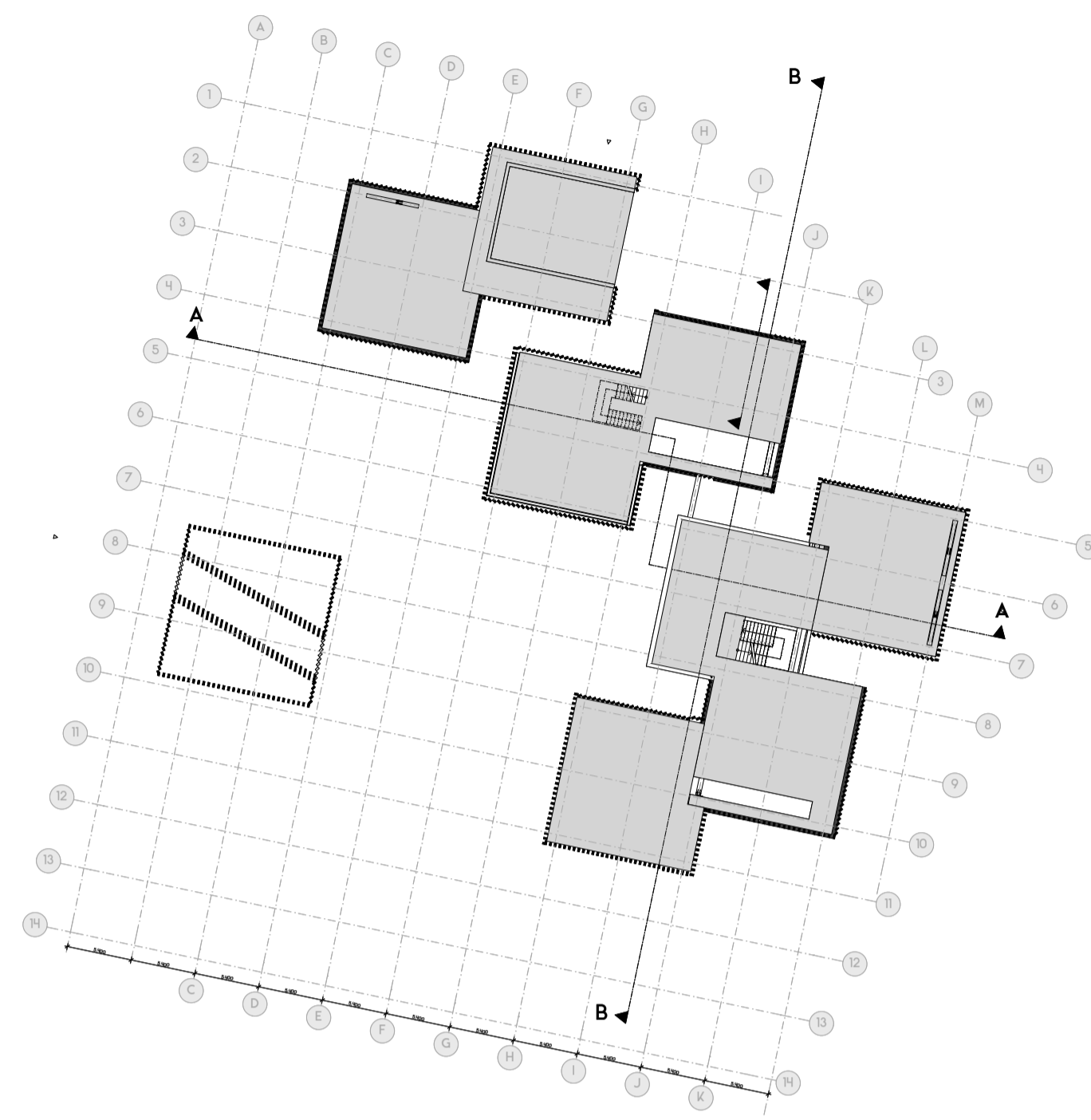
Floor Plan (-2 Parking / -2+) (1:200)



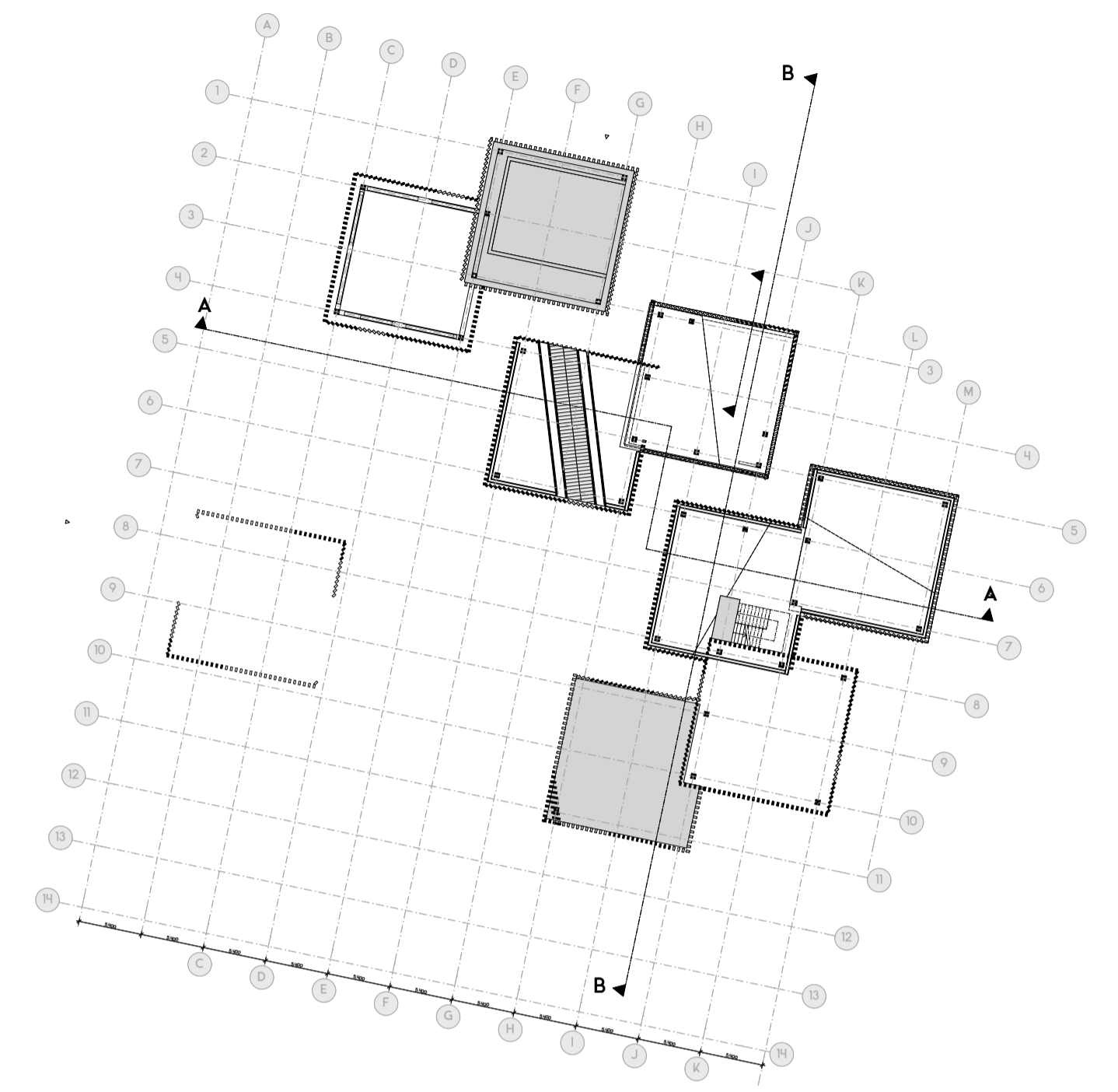
Floor Plan (-1 Plaza / -1+) (1:200)



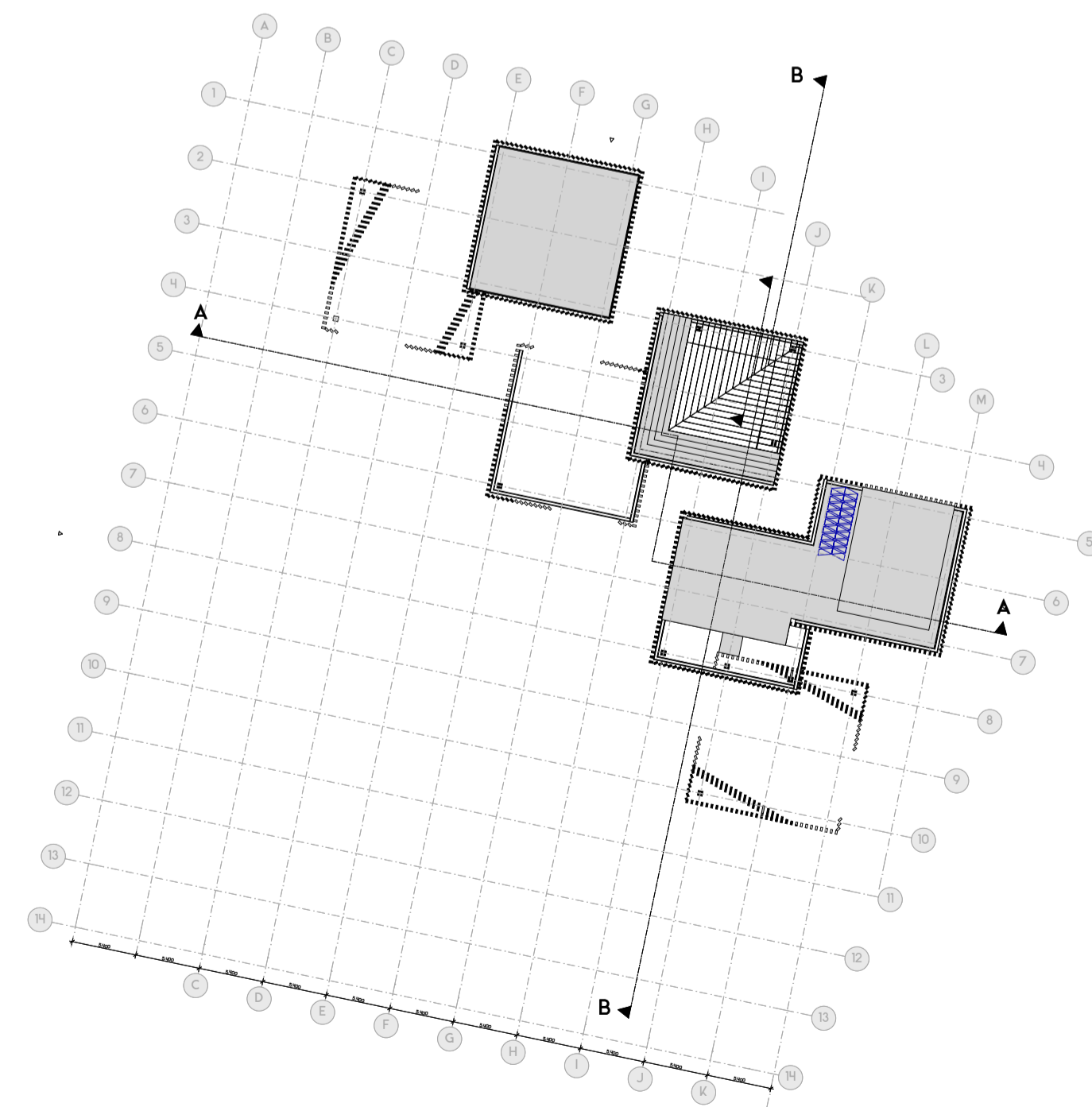
Floor Plan (0 / 0+) (1:200)



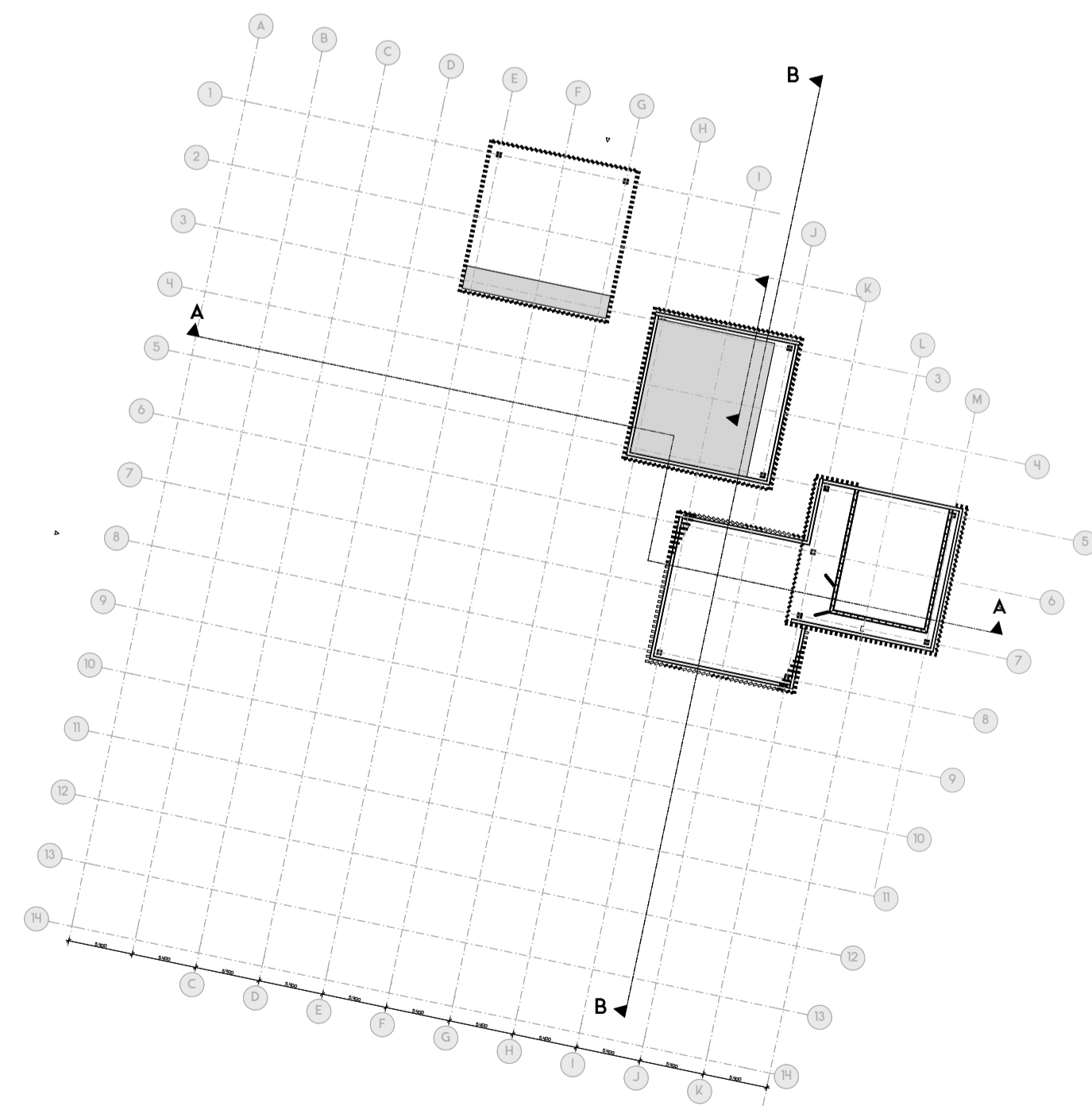
Floor Plan (1 / 1+) (1:200)



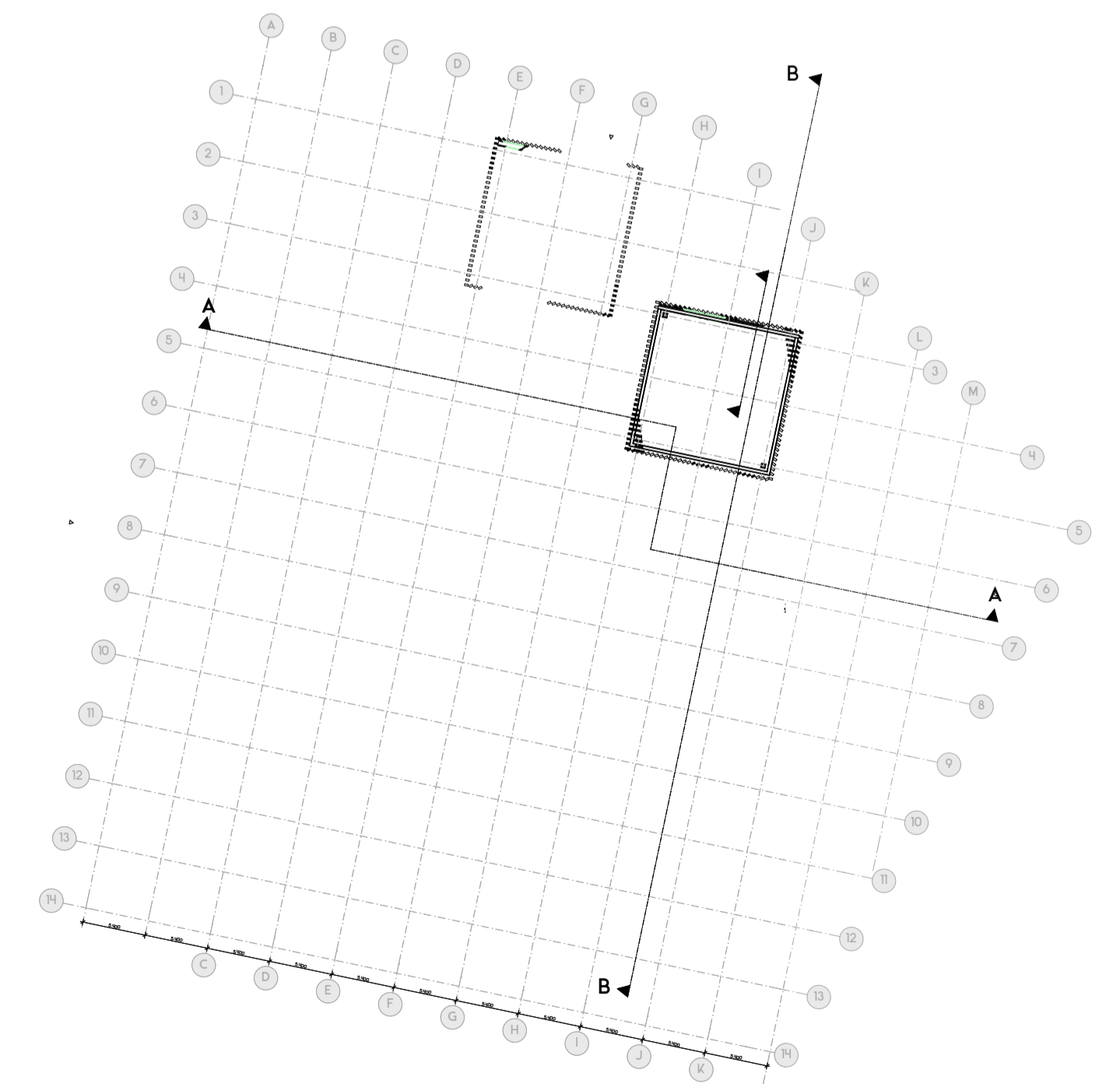
Floor Plan (2 / 2+) (1:200)



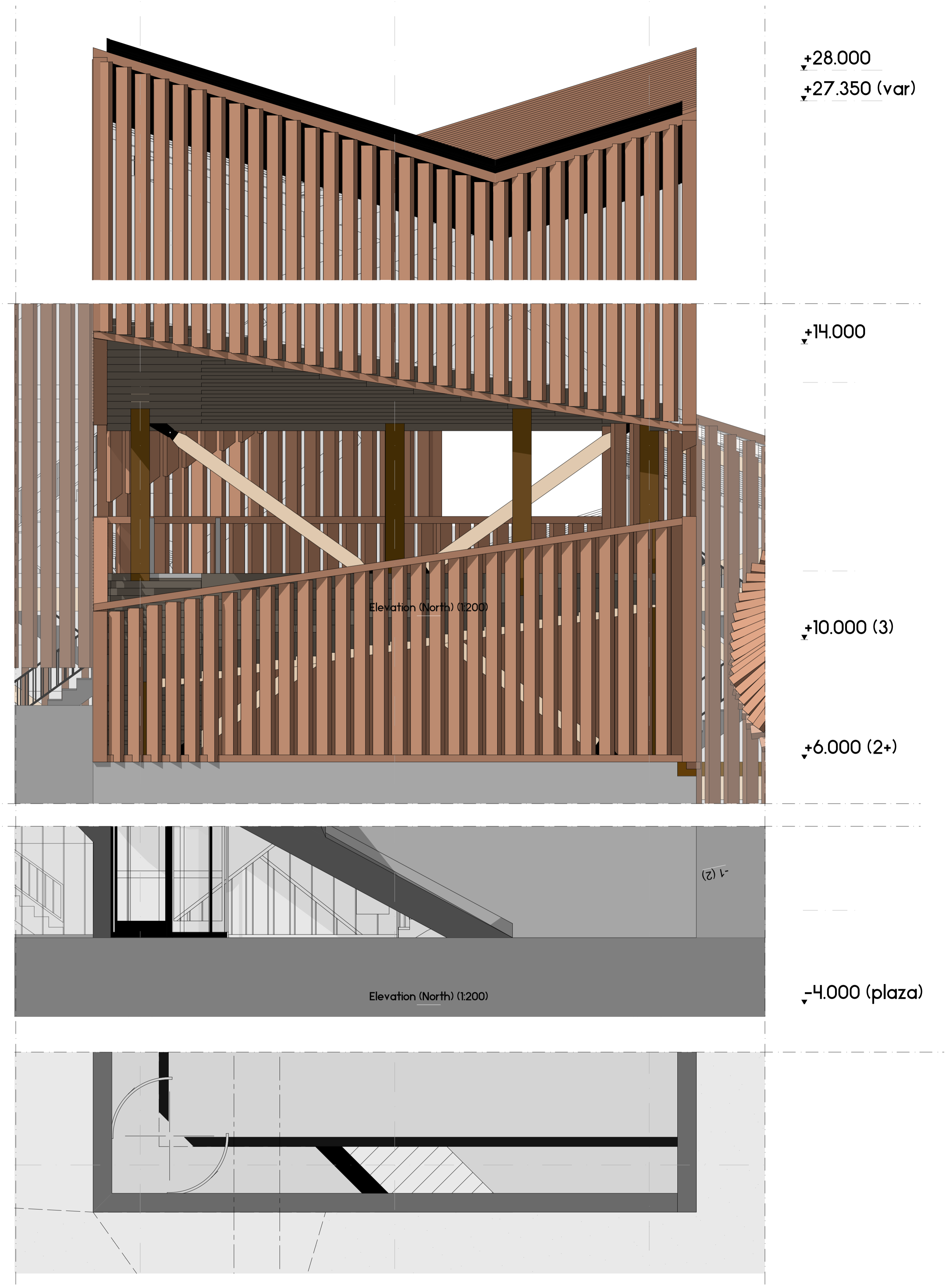
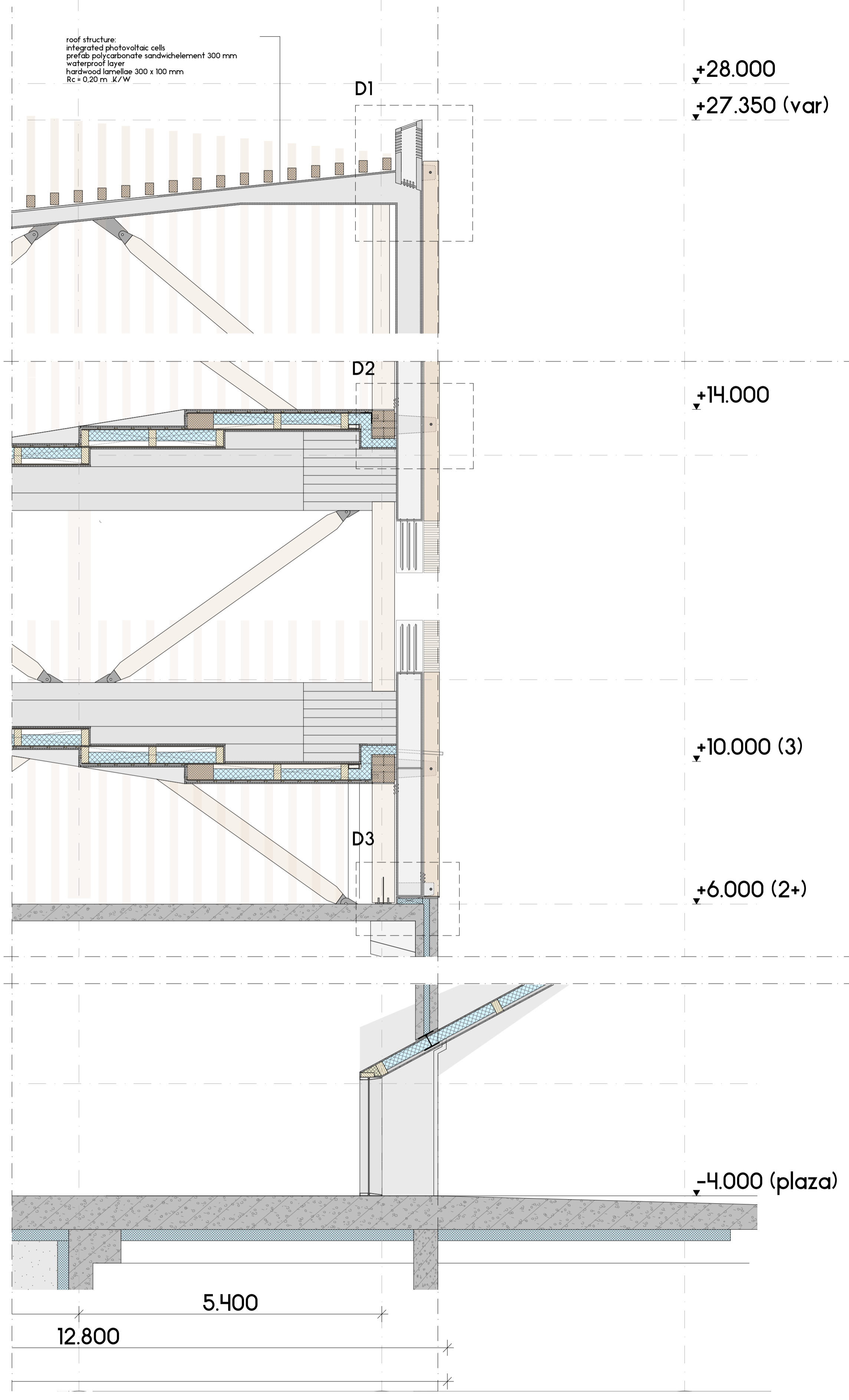
Floor Plan (3 / 3+) (1:200)



Floor Plan (4 / 4+) (1:200)



Floor Plan (6 / 6+) (1:200)



Facade Fragment (Entrance) (1:50)