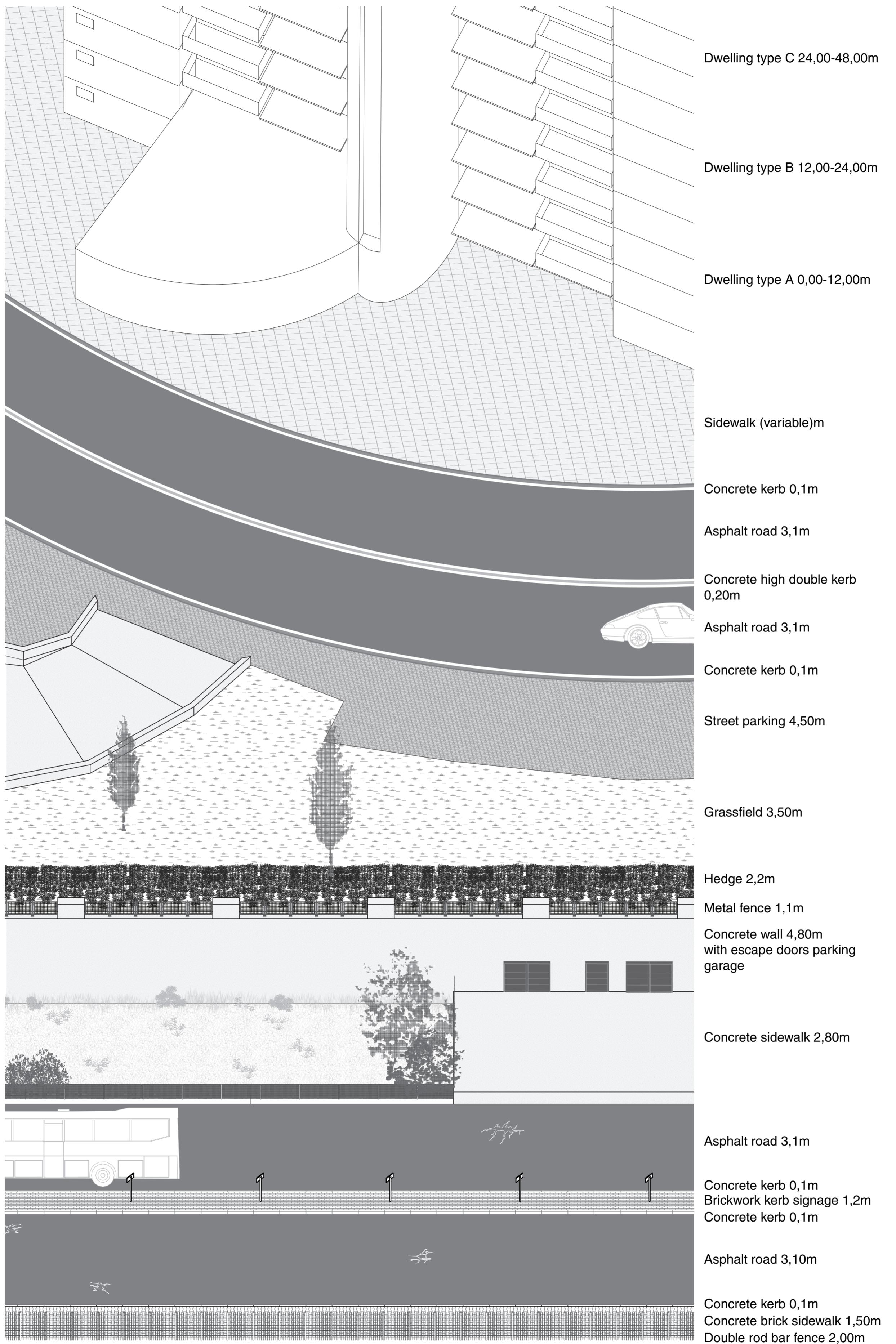




Camps along the Marmaray  
 Enclosed functions control the development  
 and the sprawl of the city of Istanbul

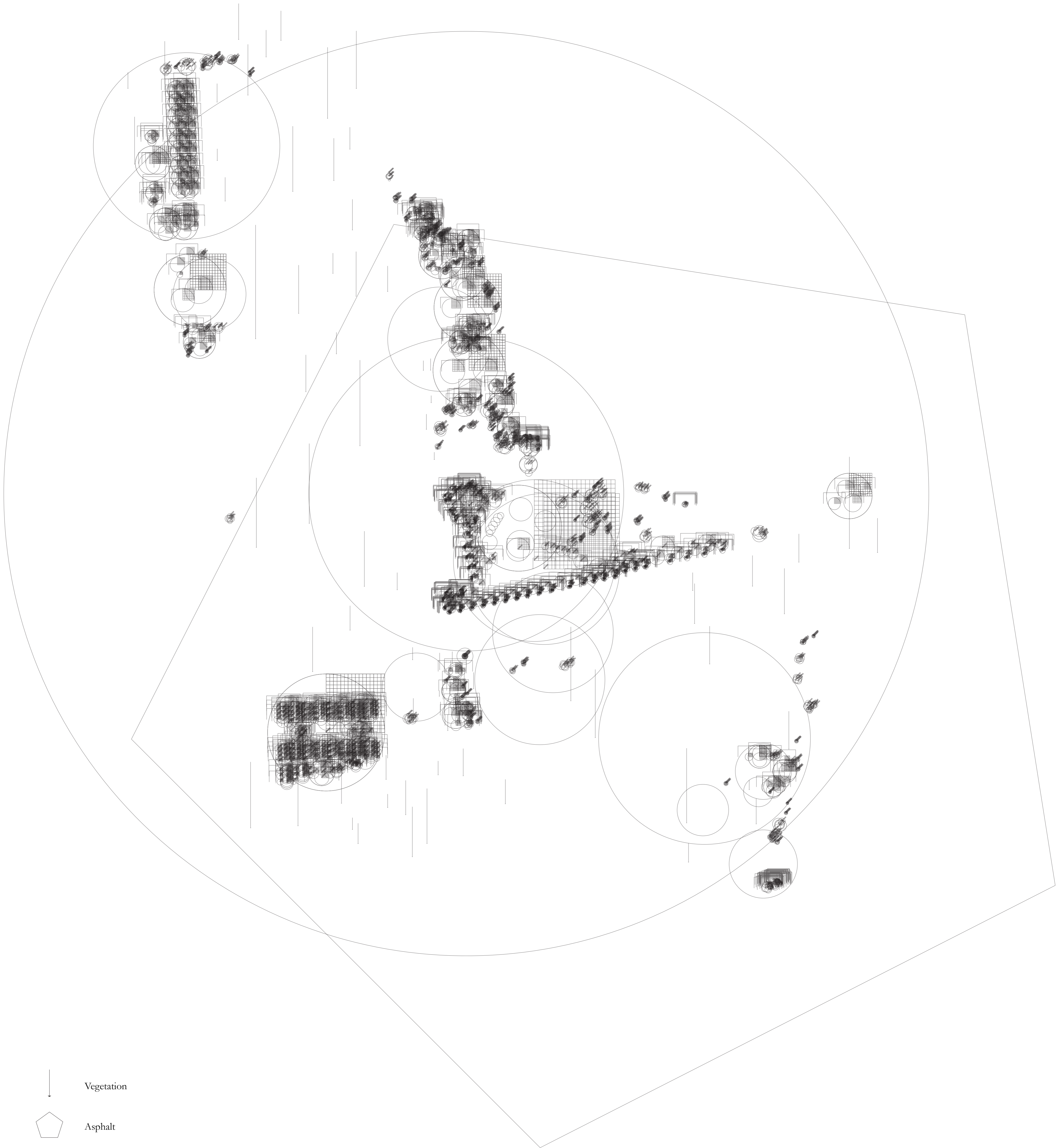


Between the dweller and the outsider

*The perimeter of Bosphorus City consists of a multitude of layers that each have their own materiality, texture and thickness.*







- ↓ Vegetation
- ⬠ Asphalt
- Concrete
- ▭ Steel Frame
- ▨ Glass
- ▧ Metal Sheets

**Material Inventory of the Airport**

*Various symbols the mark the location and amount of valuable materials on site*







- |    |                                       |    |   |
|----|---------------------------------------|----|---|
| 1  | Football fields                       | 43 | Food Markets                                    |
| 2  | Running track                         | 44 | Fountain  |
| 3  | Football Club House                   | 45 | Education Centre                                |
| 4  | Basketball Fields                     | 46 | Elderly Community Centre                        |
| 5  | Basketball Fields                     | 47 | Canteen   |
| 6  | Basketball Club House                 | 48 | Park Workers Lounge                             |
| 7  | Dojo                                  | 49 | Cultivation Museum                              |
| 8  | Tennis Clubhouse                      | 50 | Aeroplane Museum                                |
| 9  | Volleyball Fields                     | 51 | Recycling Museum                                |
| 10 | Tennis Fields                         | 52 | Unprogrammed Event Space                        |
| 11 | Volleyball Club House                 | 53 | Sculpture Garden                                |
| 12 | Indoor Pools                          | 54 | Artist Ateliers                                 |
| 13 | Outdoor Pools                         | 55 | Water Treatment Buffer                          |
| 14 | Athletics Fields                      | 56 | Water Treatment Facility                        |
| 15 | Skateparks                            | 57 | Atatürk Mall                                    |
| 16 | BMX tracks                            | 58 | Parking   |
| 17 | (Disaster) Storage                    | 59 | Emergency Hospital (COVID-19)                   |
| 18 | Protected Cultivated Wetlands         | 60 | Hospital K+R                                    |
| 19 | Collective Gardens                    | 61 | Protected Cultivated Heathlands                 |
| 20 | Allotments                            | 62 | Runway Runoff                                   |
| 21 | Tram Route                            | 63 | Active Runway                                   |
| 22 | The Fence: Walkway and Infrastructure | 64 | Active Taxiway                                  |
| 23 | Corridor                              | 65 | Military Apron                                  |
| 24 | Farmland                              | 66 | Maintenance Hangar X                            |
| 25 | Food Processing                       | 67 | Maintenance Hangar Y                            |
| 26 | Material inventory and Storage        | 68 | Maintenance Apron                               |
| 27 | Glass Processing                      | 69 | Private Terminal A                              |
| 28 | Metal Processing                      | 70 | Private Terminal B                              |
| 29 | Asphalt Processing                    | 71 | Private Terminal C                              |
| 30 | Concrete Processing                   | 72 | Private Apron                                   |
| 31 | Turbine Generator                     | 73 | Active Taxiway                                  |
| 32 | Air-cooled Condenser                  | 74 | Military Apron and Hangars                      |
| 33 | Heat Exchanger                        | 75 | Military Apron Helicopters                      |
| 34 | Thermal Storage Tanks                 | 76 | Go-Karting Track                                |
| 35 | Thermal Storage Tanks                 | 77 | Disaster Relief [Unprogrammed Space]            |
| 36 | Heat Exchange                         | 78 | Kite Festival Venue [Unprogrammed Space]        |
| 37 | Parabolic Throughs                    | 79 | Exhibitions [Unprogrammed Space]                |
| 38 | Community Centre                      | 80 | Music Festival Venue [Unprogrammed Space]       |
| 39 | Park Safety (Police, Fire, Care)      | 81 | Corridor (Infrastructure/Logistics/Circulation) |
| 40 | Picnic Terrace                        | 82 | Logistics Entrance                              |
| 41 | Food Markets                          | 83 | Cultivated Forest Border with Straight Paths    |
| 42 | Food Markets                          | 84 | Airforce Museum                                 |

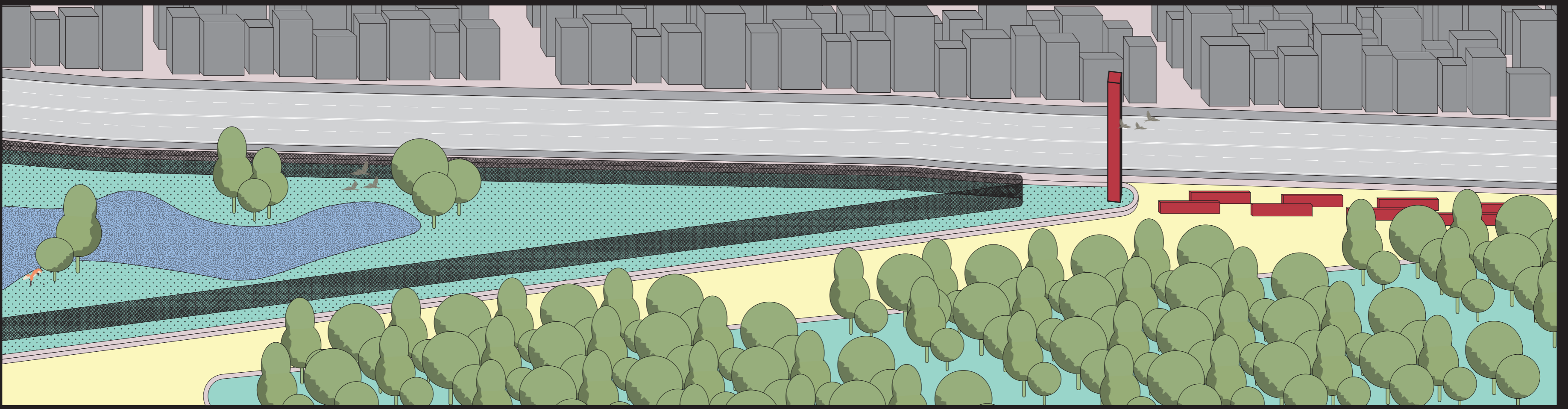
Plan incl. context  
Scale: 1:10.000

0.0km 0.4km 0.8km

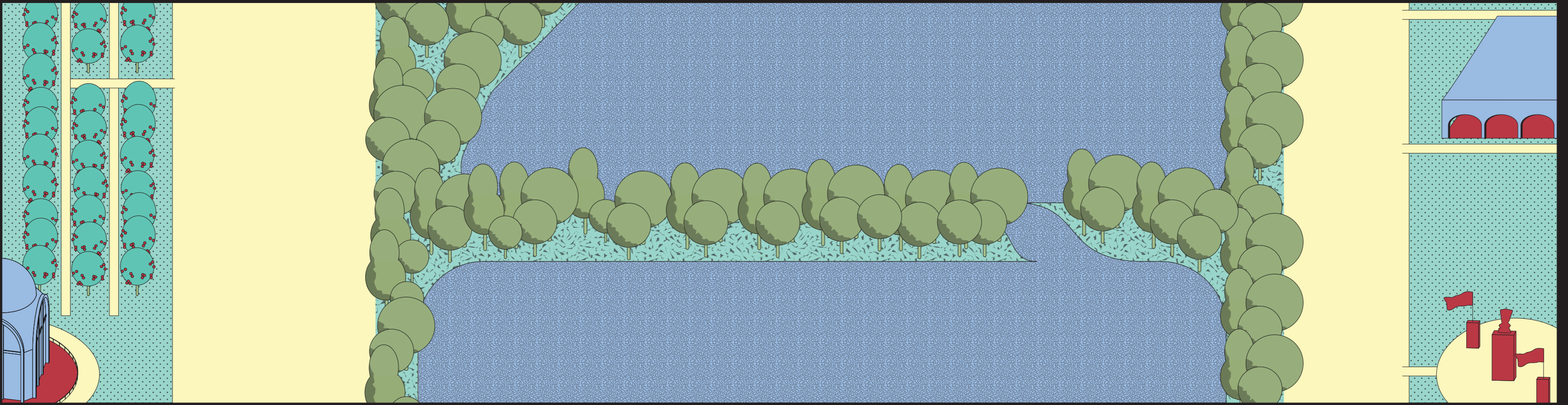




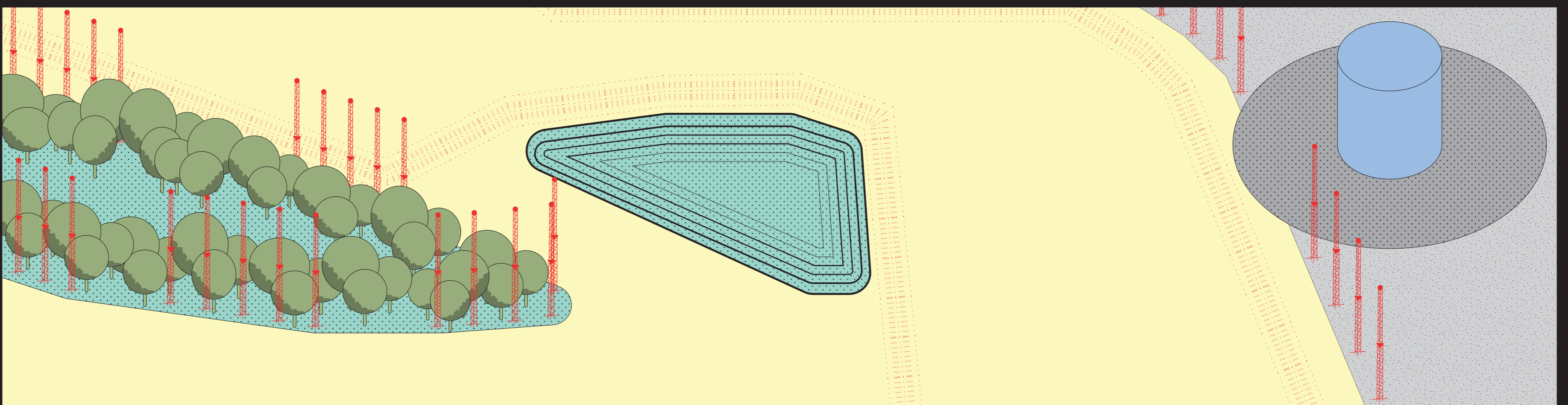
## The Perimeter



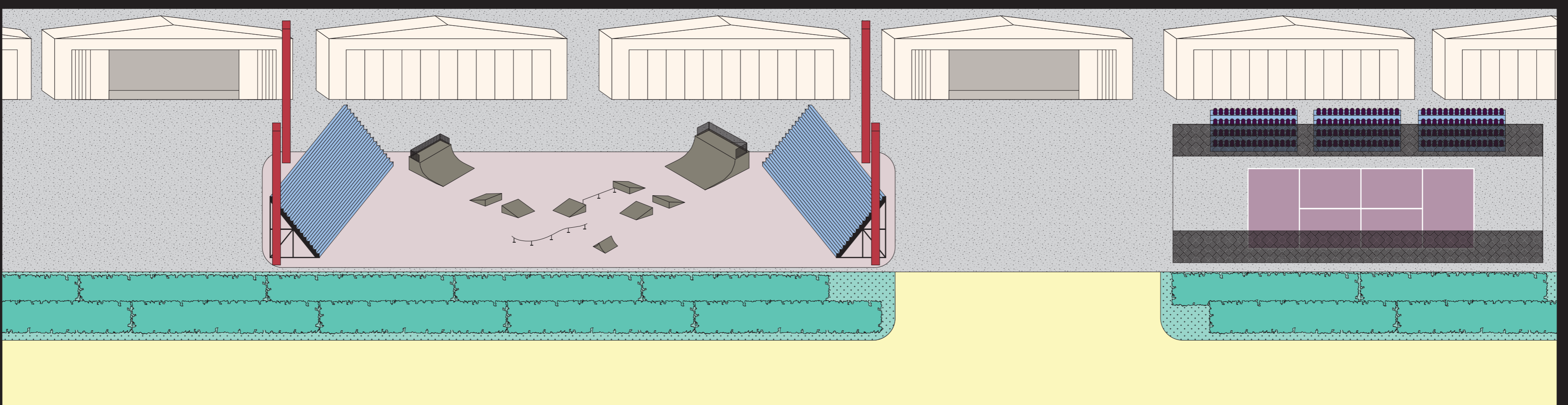
## The Collective Muses



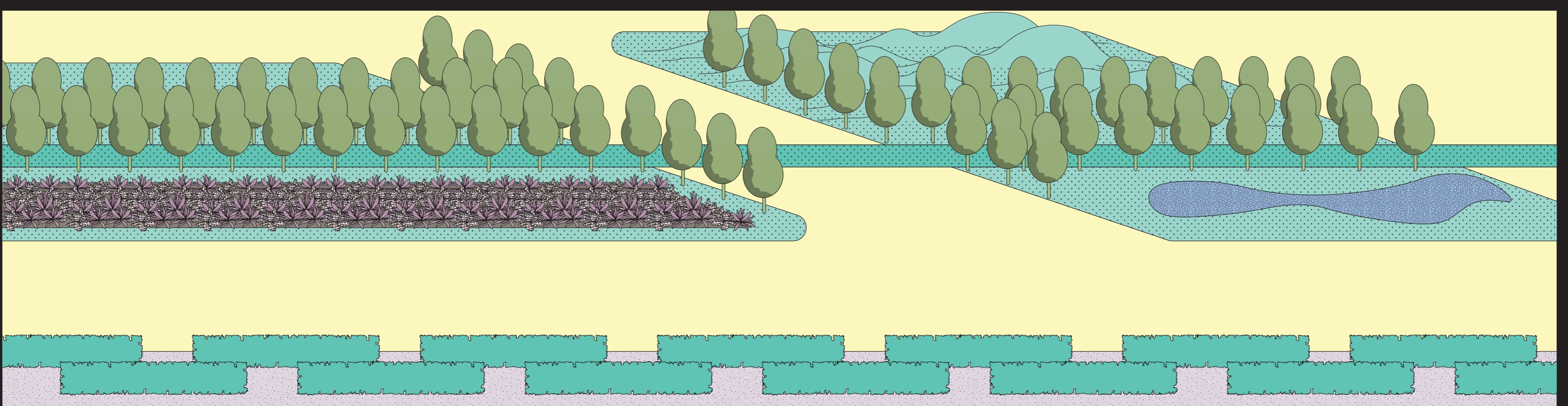
## The Infrastructures of the Frontline



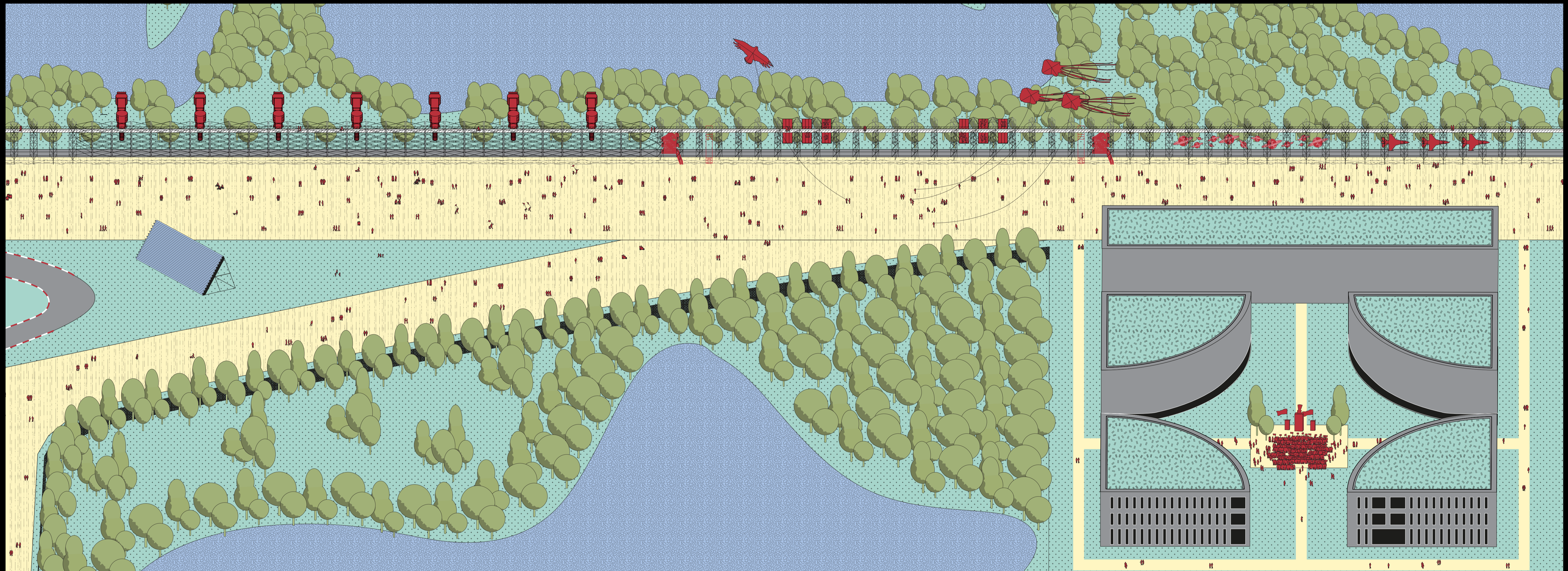
## The Arenas



## The Corridors



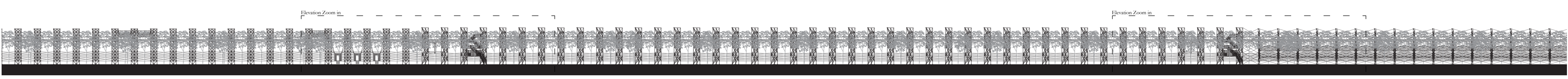
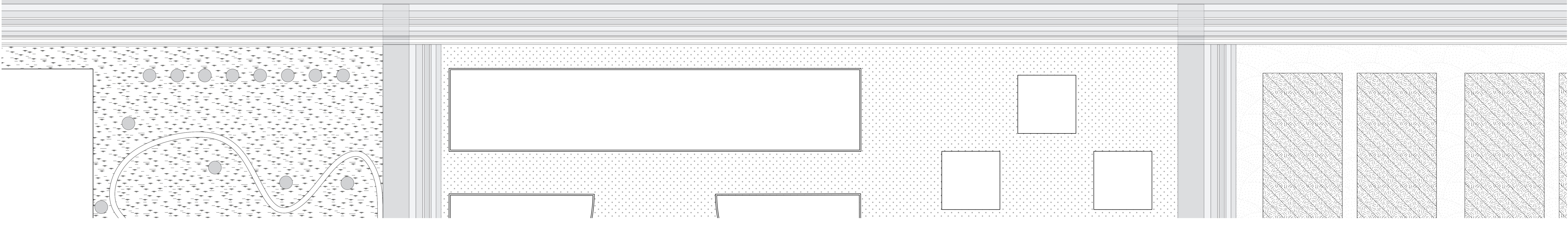
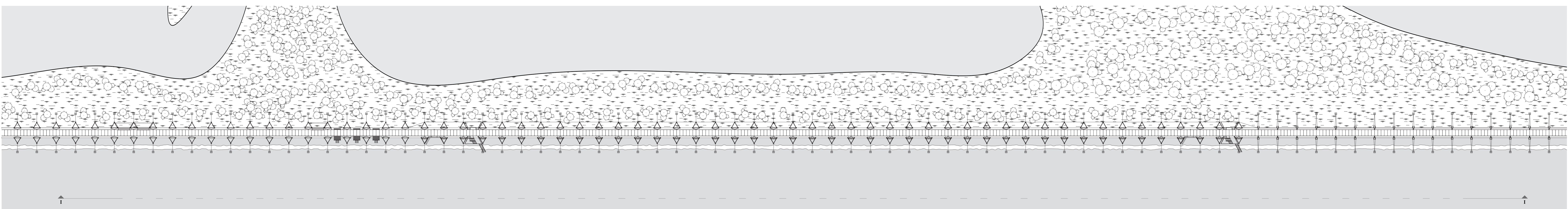




Axonometric Birds Eye

*The line becomes a space between the collective muse and the corridor*

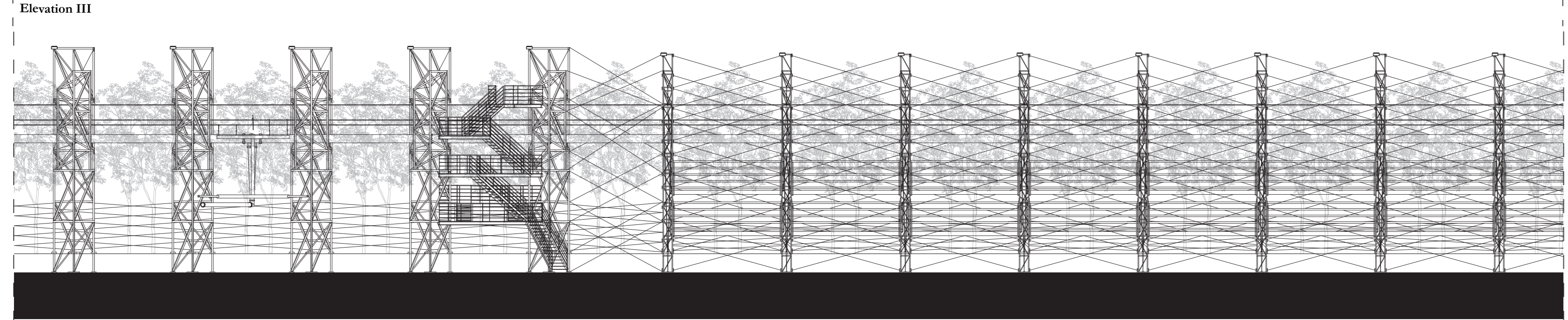
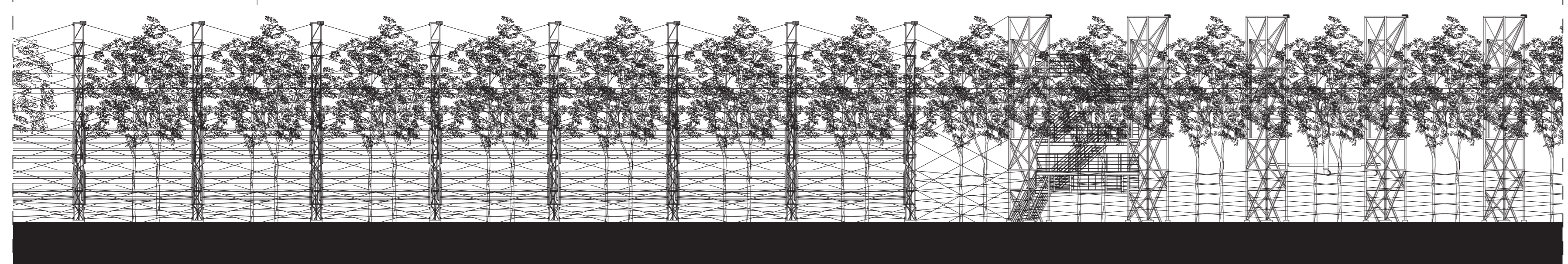
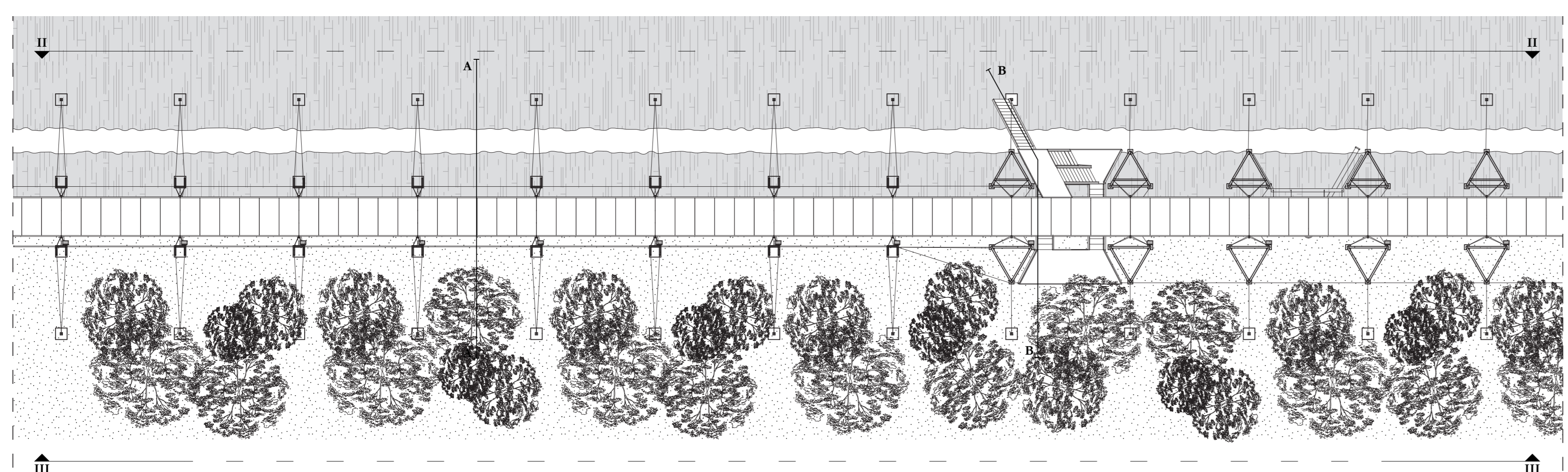




Plan and Elevation I  
Scale: 1:500

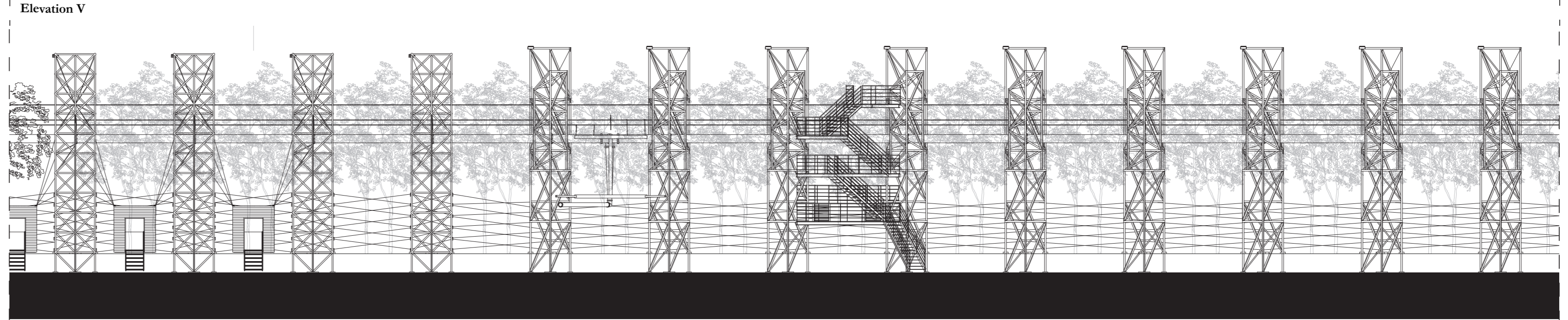
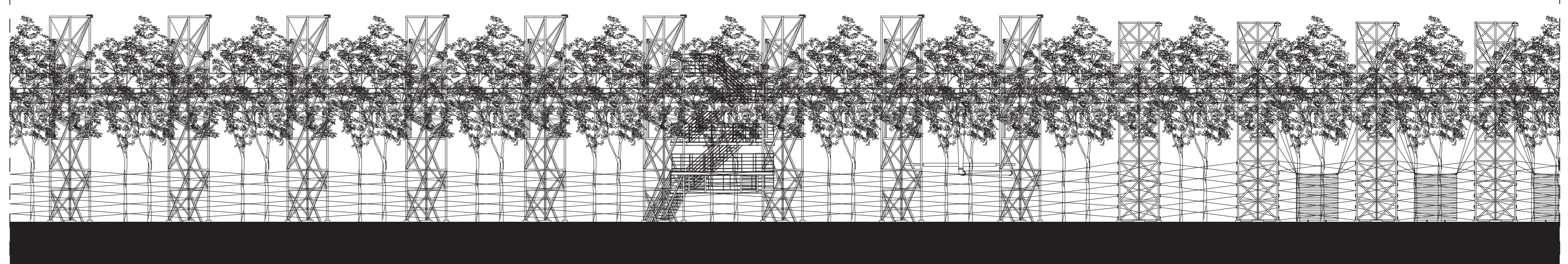
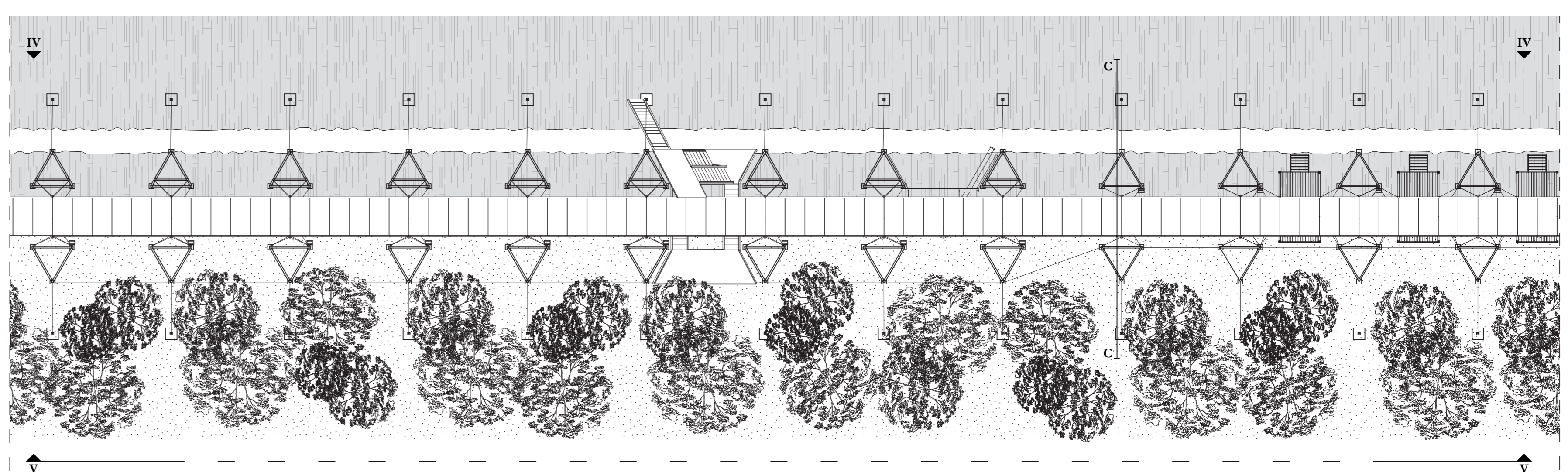
0.0m 10m 20m 30m 40m

North



Elevation III

Elevation II



Elevation V

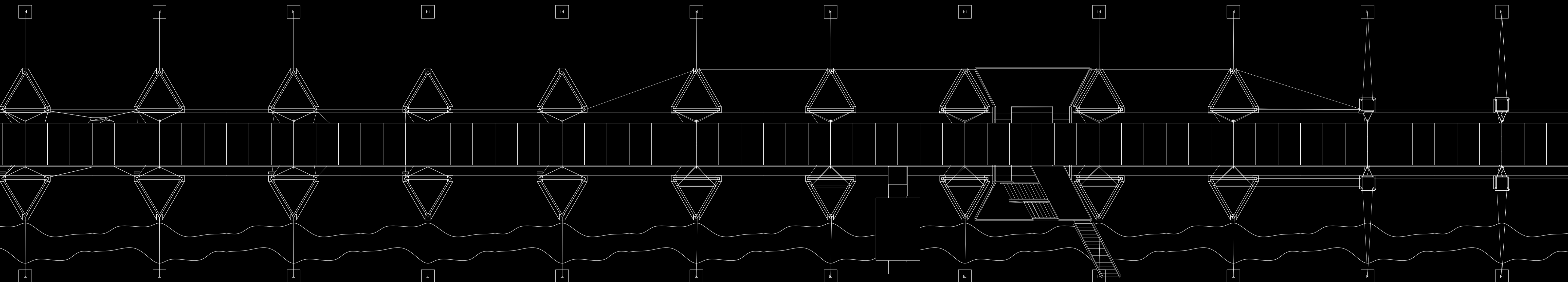
Elevation IV

Plan and Elevation II, III, IV, V  
Scale: 1:200

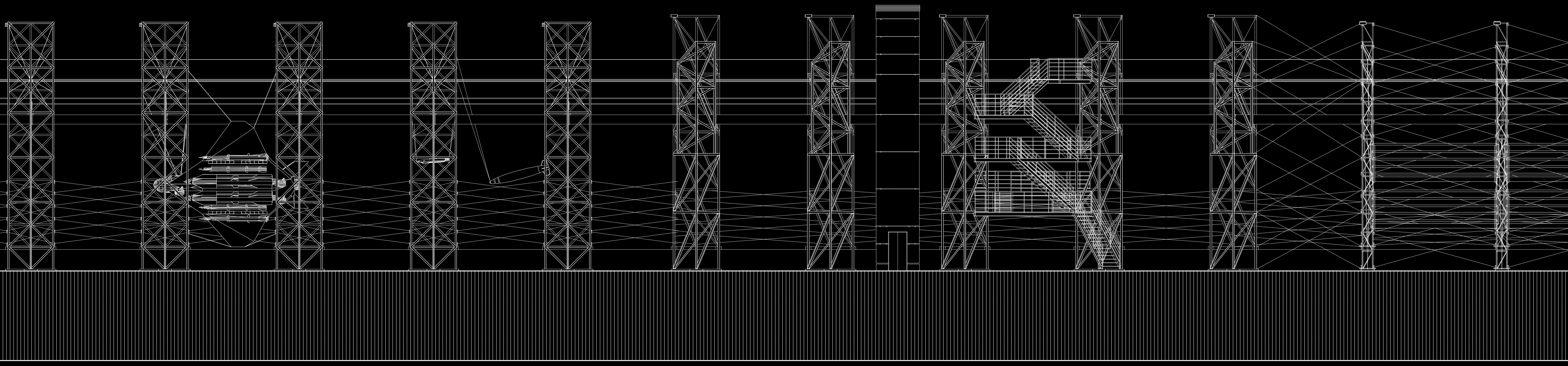
0.0m 4.0m 8.0m 12.0m 16.0m

North



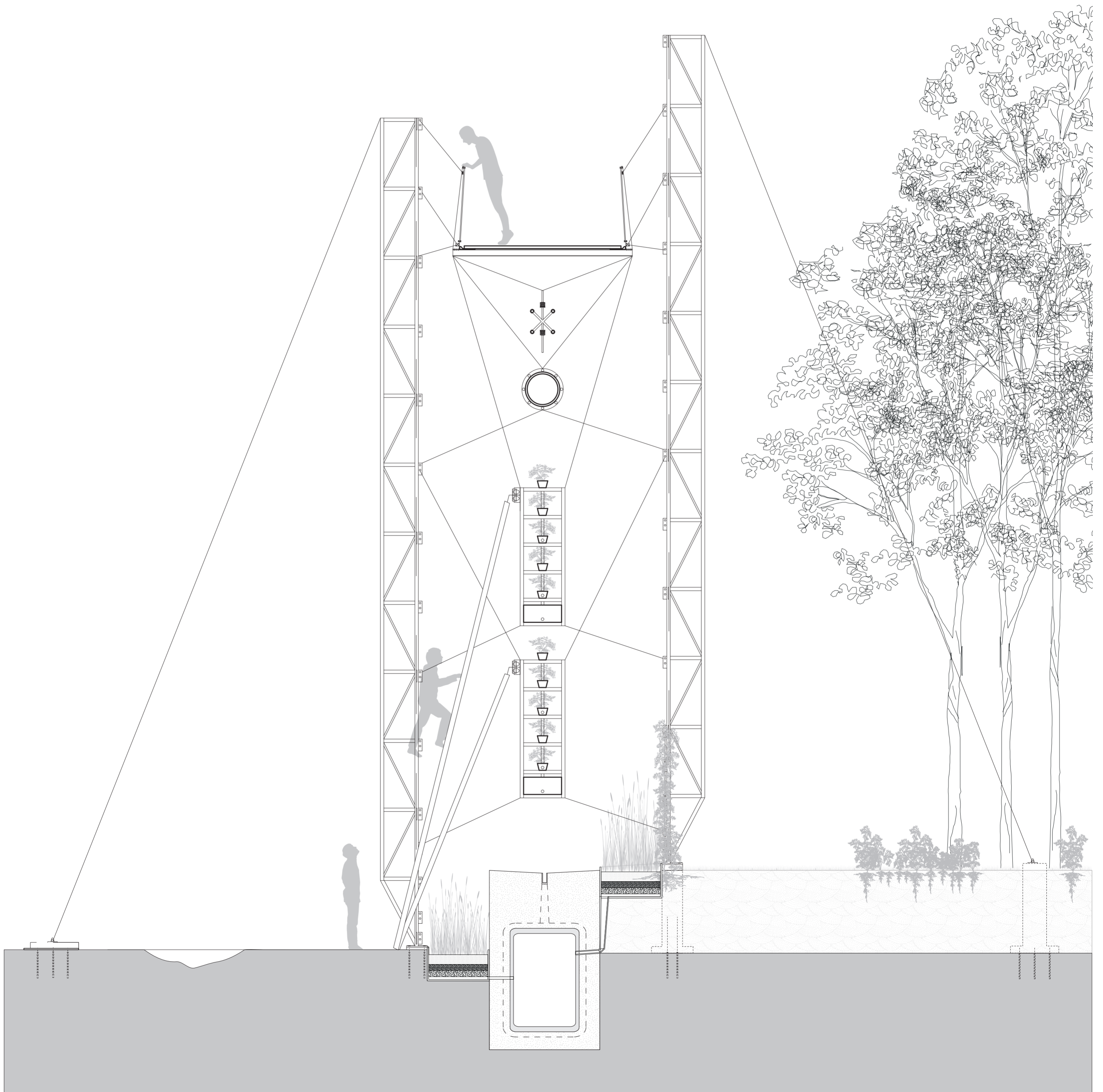


Plan  
Scale: 1:100  
0.0m 2.0m 4.0m 6.0m 8.0m



Elevation  
Scale: 1:100  
0.0m 2.0m 4.0m 6.0m 8.0m



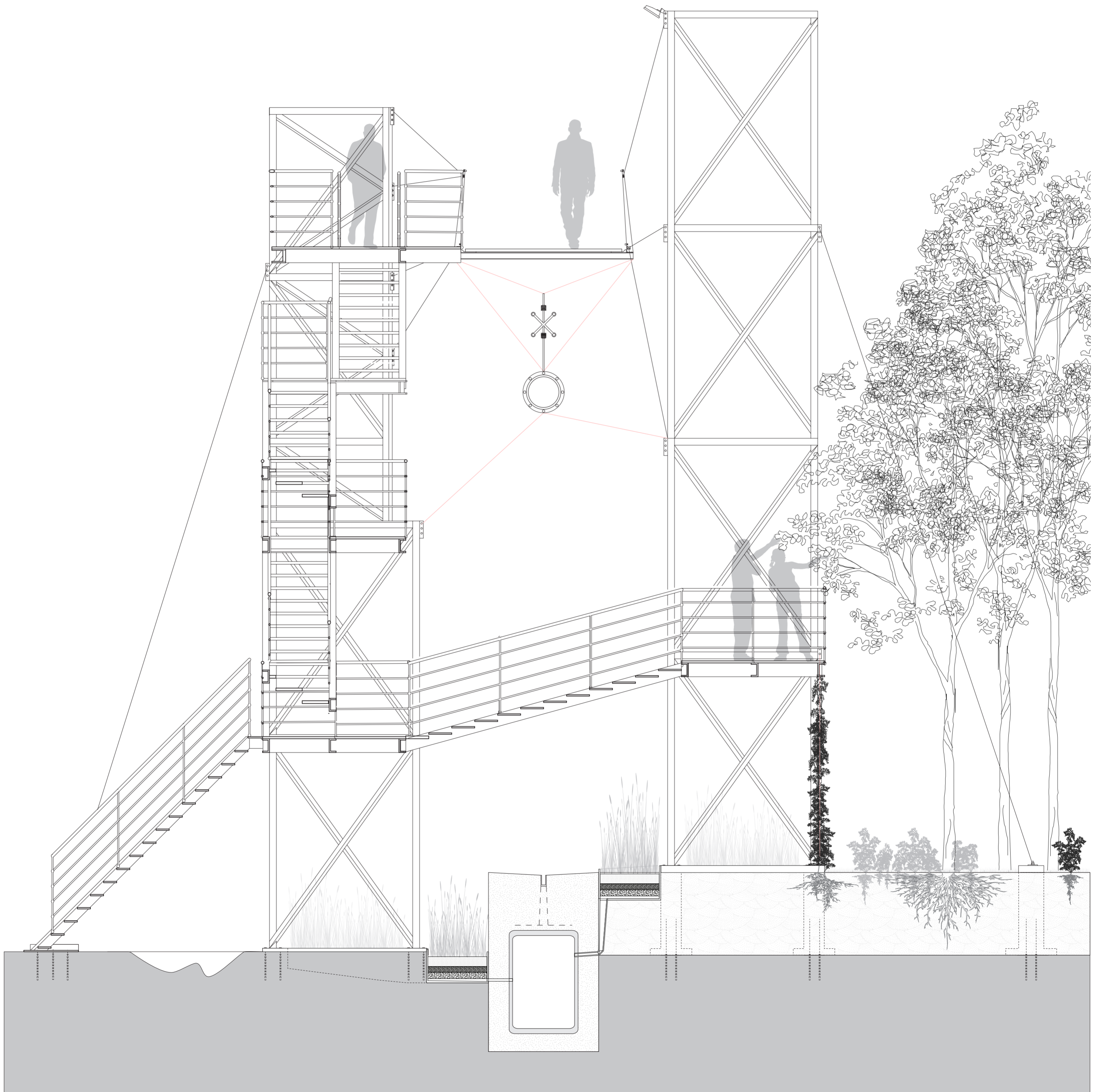


Fragment A

Scale: 1:40

0.0m 0.8 1.6 2.4 3.2





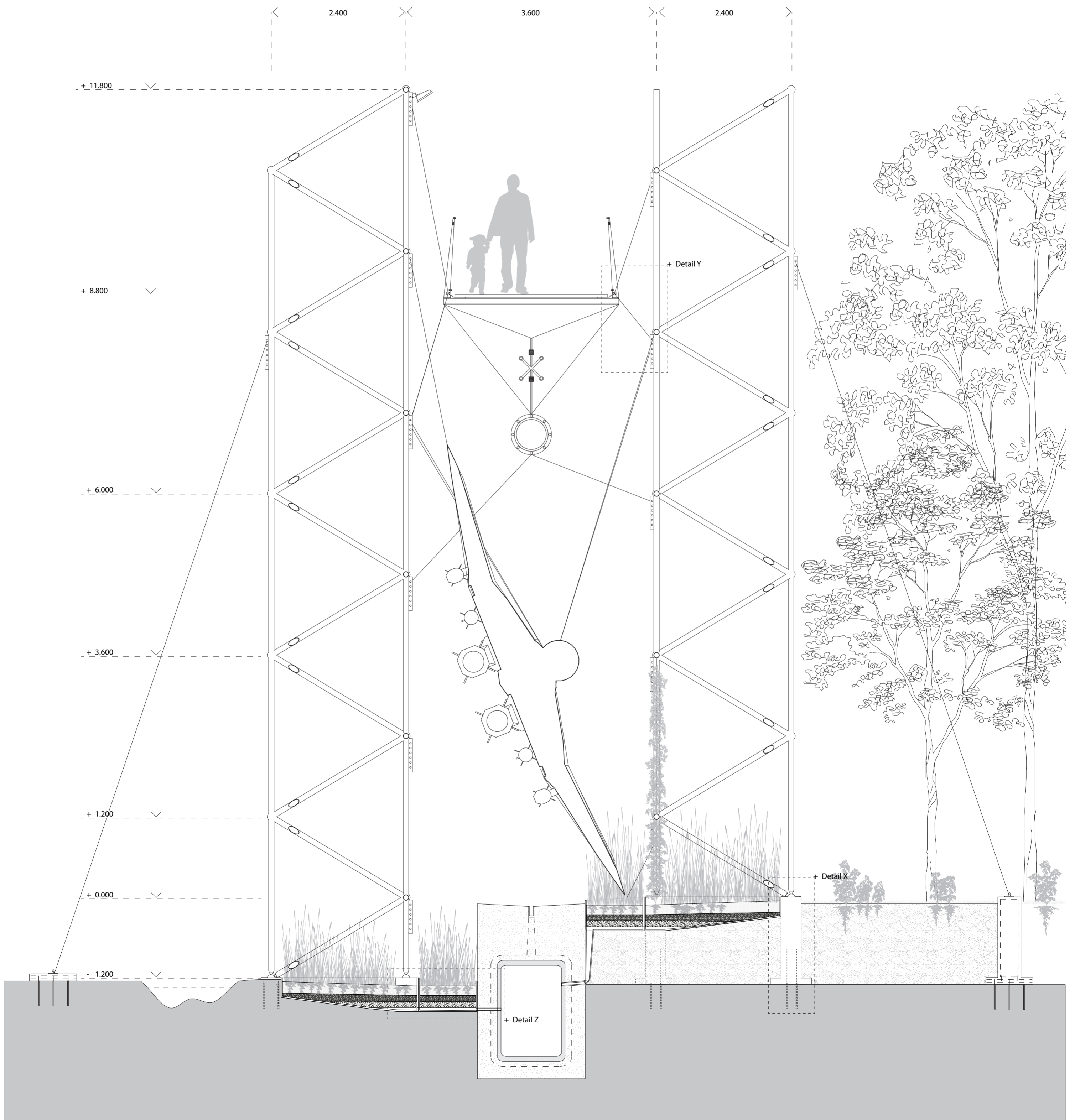
Fragment B

Scale: 1:40

0.0m 0.8 1.6 2.4 3.2







Fragment C

Scale: 1:40



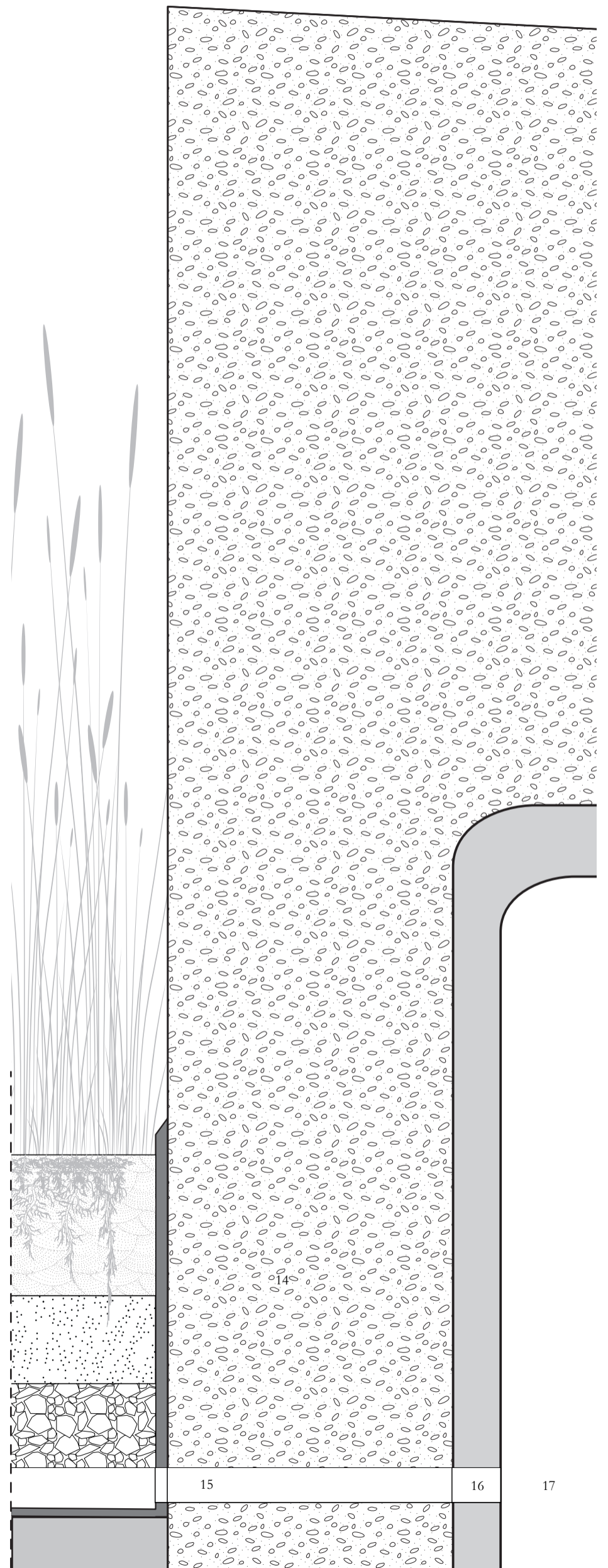
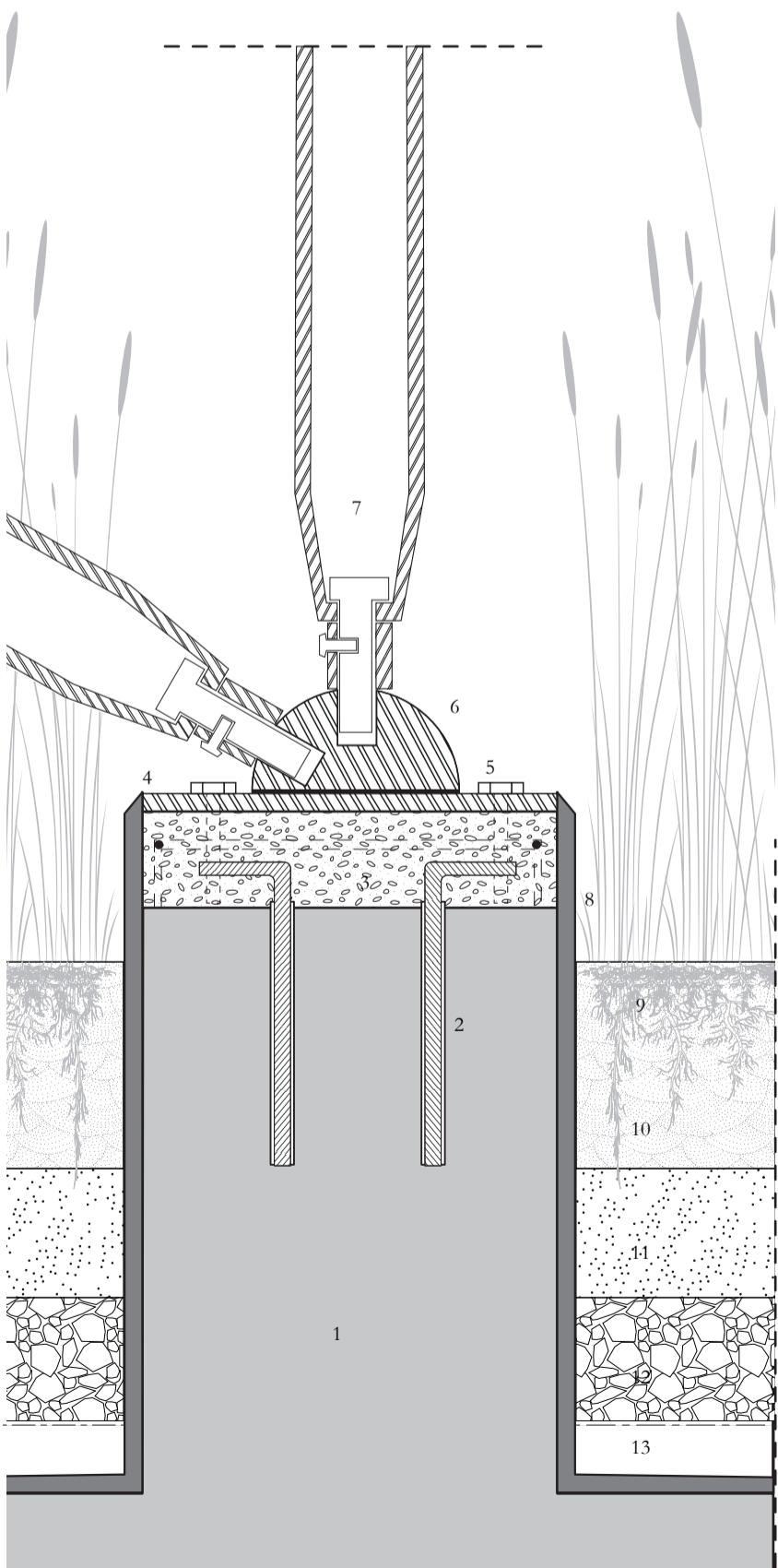


1. Leptosol - Bedrock Soil
2. Rebar connection to bedrock
3. Concrete footing
4. Steel plate bolted to concrete foot
5. Bolt connection
6. Space Frame Member Connections
7. Vertical Space Frame Member 100mm diameter - Treated linseed oil-based anti-corrosion nanocomposite coating material
8. Planter
9. Plants: Cattail
10. Filter layer 1: Sand
11. Filter layer 2: Coarse sand
12. Filter Layer 3: Coarse rock aggregate
13. Drainage Pipe: protected with root cloth
14. Existing Airport Drain: Concrete
15. Existing Airport Drain: Plastic Tube
16. Existing Airport Drain: Tube through drilled hole for draining from gutter
17. Existing Airport Drain: Cavity

Detail Z

Scale: 1:5

0mm 100 200 300 400



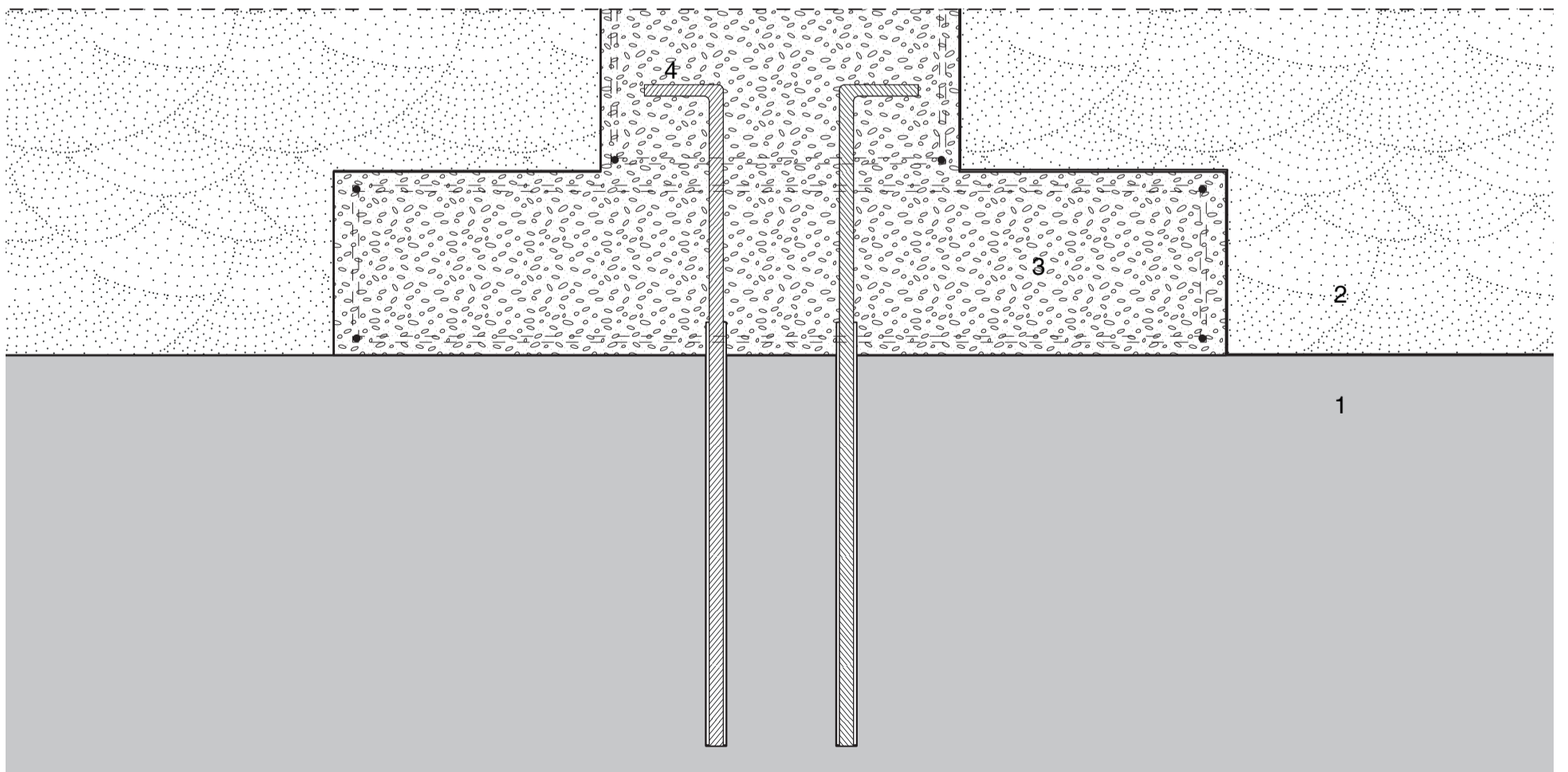
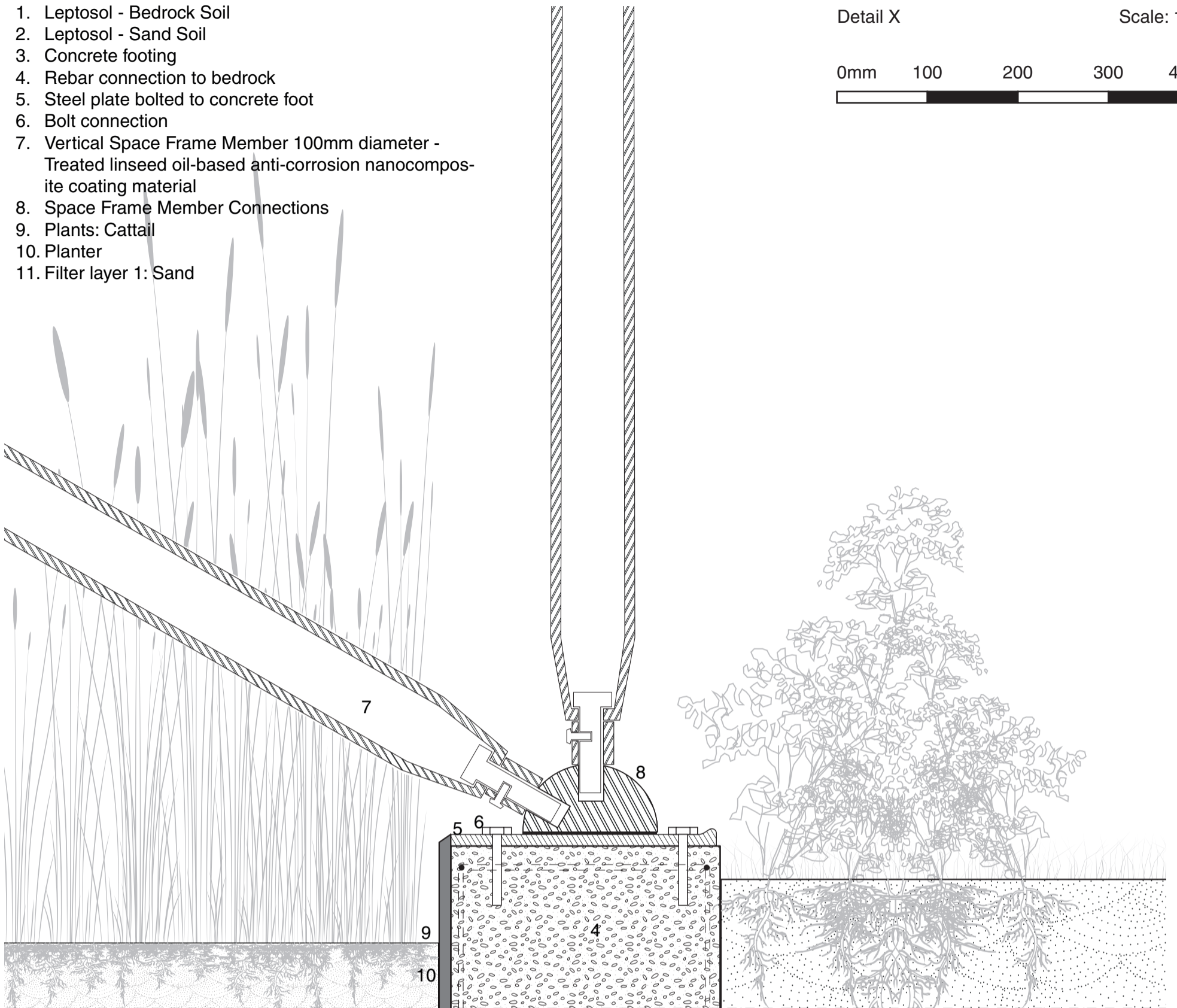


1. Leptosol - Bedrock Soil
2. Leptosol - Sand Soil
3. Concrete footing
4. Rebar connection to bedrock
5. Steel plate bolted to concrete foot
6. Bolt connection
7. Vertical Space Frame Member 100mm diameter -  
Treated linseed oil-based anti-corrosion nanocomposite coating material
8. Space Frame Member Connections
9. Plants: Cattail
10. Planter
11. Filter layer 1: Sand

Detail X

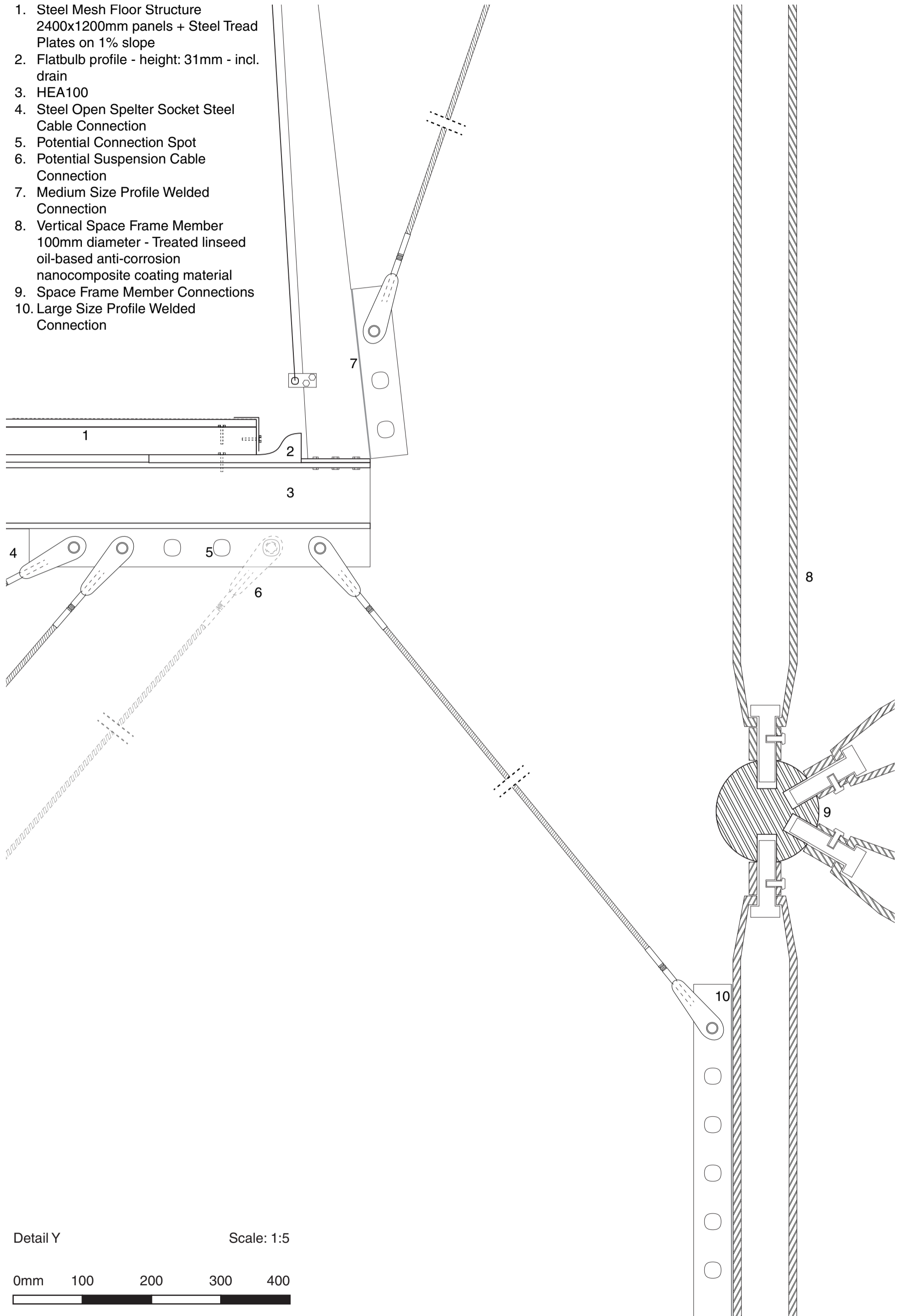
Scale: 1:5

0mm 100 200 300 400





1. Steel Mesh Floor Structure  
2400x1200mm panels + Steel Tread  
Plates on 1% slope
2. Flatbulb profile - height: 31mm - incl.  
drain
3. HEA100
4. Steel Open Spelter Socket Steel  
Cable Connection
5. Potential Connection Spot
6. Potential Suspension Cable  
Connection
7. Medium Size Profile Welded  
Connection
8. Vertical Space Frame Member  
100mm diameter - Treated linseed  
oil-based anti-corrosion  
nanocomposite coating material
9. Space Frame Member Connections
10. Large Size Profile Welded  
Connection



Detail Y

Scale: 1:5

0mm 100 200 300 400









