

Halanaeroarchaeum sulfurireducens gen. nov., sp. nov., the first obligately anaerobic sulfur-respiring haloarchaeon, isolated from a hypersaline lake

Sorokin, D.; Kublanov, Ilya V.; Yakimov, Mikhail M.; Rijpstra, W. Irene C; Sinninghe Damsté, Jaap S.

DOI

[10.1099/ijsem.0.001041](https://doi.org/10.1099/ijsem.0.001041)

Publication date

2016

Document Version

Accepted author manuscript

Published in

International Journal of Systematic and Evolutionary Microbiology

Citation (APA)

Sorokin, D., Kublanov, I. V., Yakimov, M. M., Rijpstra, W. I. C., & Sinninghe Damsté, J. S. (2016). Halanaeroarchaeum sulfurireducens gen. nov., sp. nov., the first obligately anaerobic sulfur-respiring haloarchaeon, isolated from a hypersaline lake. *International Journal of Systematic and Evolutionary Microbiology*, 66(6), 2377-2381. Article 001041. <https://doi.org/10.1099/ijsem.0.001041>

Important note

To cite this publication, please use the final published version (if applicable). Please check the document version above.

Copyright

Other than for strictly personal use, it is not permitted to download, forward or distribute the text or part of it, without the consent of the author(s) and/or copyright holder(s), unless the work is under an open content license such as Creative Commons.

Takedown policy

Please contact us and provide details if you believe this document breaches copyrights. We will remove access to the work immediately and investigate your claim.

International Journal of Systematic and Evolutionary Microbiology

Halanaeroarchaeum sulfurireducens gen. nov., sp. nov., a first obligately anaerobic sulfur-respiring haloarchaeon from hypersaline lakes

--Manuscript Draft--

| | |
|-------------------------------------|---|
| Manuscript Number: | IJSEM-D-16-00081R1 |
| Full Title: | Halanaeroarchaeum sulfurireducens gen. nov., sp. nov., a first obligately anaerobic sulfur-respiring haloarchaeon from hypersaline lakes |
| Short Title: | Halanaeroarchaeum sulfurireducens gen. nov., sp. nov. |
| Article Type: | Note |
| Section/Category: | New taxa - Archaea |
| Keywords: | hypersaline lakes, haloarchaea, sulfur reduction, anaerobic |
| Corresponding Author: | Dimitry Y Sorokin, Ph.D., Dr.Sci. Winogradsky Institute of Microbiology RAS Moscow, NA RUSSIAN FEDERATION |
| First Author: | Dimitry Y Sorokin, Ph.D., Dr.Sci. |
| Order of Authors: | Dimitry Y Sorokin, Ph.D., Dr.Sci. Ilya V Kublanov, Dr. Mikhail M Yakimov, Dr. W. Irene C. Rijpstra Jaap S. Sinninghe Damsté, Dr. |
| Manuscript Region of Origin: | RUSSIAN FEDERATION |
| Abstract: | Anaerobic enrichments with acetate as e-donor and carbon source and elemental sulfur as electron acceptor at 4 M NaCl using anaerobic sediments and brines from several hypersaline lakes in Kulunda Steppe (Altai, Russia) resulted in isolation in pure culture of four strains of obligately anaerobic haloarchae growing exclusively by sulfur respiration. Such metabolism has not yet been demonstrated in any known species of Halobacteria and in the whole archaeal kingdom the acetate oxidation with sulfur as acceptor was not previously demonstrated. The four isolates had nearly identical 16S rRNA gene sequences and formed a novel genus-level branch within the family Halobacteraceae. The strains had a restricted substrate range limited to acetate and pyruvate as e-donors and elemental sulfur as e-acceptor. In contrast to aerobic haloarchaea, the biomass of anaerobic isolates completely lacked the typical red pigments. The growth with acetate+sulfur was observed between 3-5 M NaCl and at a pH range from 6.7 to 8.0. The membrane core lipids were dominated by archaeols. On the basis of distinct physiological and phylogenetic data, it is proposed that the sulfur-respiring isolates represent a novel genus and species Halanaeroarchaeum sulfurireducens gen. nov., sp. nov. (type strain HSR2T=JCM 30661T=UNIQEM U935T). |

2 ***Halanaeroarchaeum sulfurireducens* gen. nov., sp. nov., a first obligately**
3 **anaerobic sulfur-respiring haloarchaeon from hypersaline lakes**

4
5
6 Dimitry Y. Sorokin^{a,b*}, Ilya V. Kublanov^a, Mikhail Yakimov^c, W. Irene C. Rijpstra^d, Jaap S.
7 Sinninghe Damsté^{d,e},

8
9 ^a*Winogradsky Institute of Microbiology, Research Centre of Biotechnology, Russian Academy of*
10 *Sciences, Moscow, Russia*

11 ^b*Department of Biotechnology, TU Delft, The Netherlands*

12 ^c*IAMC-CNR, Spianata S.Raineri 86, 98122 Messina, Italy.*

13 ^d*NIOZ Royal Netherlands Institute for Sea Research, Department of Marine Microbiology and*
14 *Biogeochemistry, and Utrecht University, PO Box 59, 1790 AB Den Burg, Texel, The Netherlands*

15 ^e*Faculty of Geosciences, Department of Earth Sciences, Utrecht University, Utrecht, The Netherlands*

16

17

18 *Author for correspondence:

19 D.Y. Sorokin; e-mail: soroc@inmi.ru; d.sorokin@tudelft.nl

20

21

22

23

24

25

26

27

28

29

30

31

32 Running title: *Halanaeroarchaeum sulfurireducens* gen. nov., sp. nov.

33

34 Category: new taxa - Archaea

35

36

37 The 16S-rRNA gene sequences of the strains HSR strains described here have been deposited

38 in the GenBank under the numbers KM875608 and KM875610-KM875612.

39

40 Anaerobic enrichments with acetate as e-donor and carbon source and elemental sulfur
41 as electron acceptor at 4 M NaCl using anaerobic sediments and brines from several
42 hypersaline lakes in Kulunda Steppe (Altai, Russia) resulted in isolation in pure culture
43 of four strains of obligately anaerobic haloarchae growing exclusively by sulfur
44 respiration. Such metabolism has not yet been demonstrated in any known species of
45 *Halobacteria* and in the whole archaeal kingdom the acetate oxidation with sulfur as
46 acceptor was not previously demonstrated. The four isolates had nearly identical 16S
47 rRNA gene sequences and formed a novel genus-level branch within the family
48 *Halobacteraceae*. The strains had a restricted substrate range limited to acetate and
49 pyruvate as e-donors and elemental sulfur as e-acceptor. In contrast to aerobic
50 haloarchaea, the biomass of anaerobic isolates completely lacked the typical red
51 pigments. The growth with acetate+sulfur was observed between 3-5 M NaCl and at a
52 pH range from 6.7 to 8.0. The membrane core lipids were dominated by archaeols. On
53 the basis of distinct physiological and phylogenetic data, it is proposed that the sulfur-
54 respiring isolates represent a novel genus and species *Halanaeroarchaeum*
55 *sulfurireducens* gen. nov., sp. nov. (type strain HSR2^T=JCM 30661^T=UNIQEM U935^T).

56
57

58 Key words: hypersaline lakes, haloarchaea, sulfur reduction, anaerobic

59

60

61

62

63

64 Our recent study on the microbiology of reductive sulfur cycling in hypersaline habitats
65 resulted in the discovery of a novel functional group of haloarchaea in anaerobic sediments of
66 hypersaline lakes growing exclusively by dissimilatory elemental sulfur respiration (Sorokin
67 *et al.*, 2016). This metabolic type was previously unknown among the haloarchaea, but even
68 more surprising anaerobic acetate oxidation with a low-potential electron acceptor such as
69 elemental sulfur has not yet been demonstrated in the whole archaeal kingdom. This makes
70 the newly discovered group of obligately anaerobic haloarchaea truly unique. The previous
71 work was mostly focused on the genomic properties of the type strain HSR2^T and its
72 functional annotation. Here we provide a formal taxonomic description of the novel taxon as
73 *Halanaeroarchaeum sulfurireducens* gen. nov., sp. nov.

74 Sources of inocula were brines and anaerobic sulfidic surface sediments (2-10 cm)
75 obtained from hypersaline chloride-sulfate lakes (see Sorokin *et al.*, 2012 for a detailed
76 description) in the Kulunda Steppe (Altai, Russia) in 2009-2013. The enrichment and
77 isolation procedures, the medium composition and cultivation conditions have been described
78 previously (Sorokin *et al.*, 2016). Overall, anaerobic enrichments using acetate as *e*-donor/C
79 source and elemental sulfur as *e*-acceptor at 4 M NaCl, pH 7 and 37°C resulted in isolation of
80 four strains of haloarchaea designated HSR2^T, HSR3, HSR4 and HSR5. The cell morphology
81 of the isolates was typical for haloarchaea, i.e. flat coccoids and board-like rods, non-motile
82 (**Fig. 1, a-d**). On the other hand, the cell mass lack any detectable red pigments characteristic
83 of haloarchaea. Flagella were not observed in negatively stained cells. For thin sectioning, the
84 cell pellets were fixed in 1% (w/v) OsO₄ containing 3.0 M NaCl for 48 h at room temperature,
85 washed, stained overnight with 1% (w/v) uranyl acetate, dehydrated in an increasing ethanol
86 series, and embedded in Epon resin. Thin sections were stained with 1% (w/v) lead citrate.
87 The cells of HSR2^T had a thin monolayer proteinaceous cell wall and extended nucleoid (**Fig.**
88 **1, e**) and the cells lyzed immediately when the salt concentration dropped below 1.0 M.

89 The core membrane lipid analysis were performed by a method described in Weijers *et*
90 *al.* (2009). The core lipids of strain HSR2^T consisted of two major diether components,
91 archaeol, and extended archaeol (i.e. C20-C25) in nearly equal proportion (47 and 53%,
92 respectively), both common in haloarchaea (e.g. Villanueva *et al.*, 2014). The polar
93 phospholipids were analysed with an LC/MSⁿ method described in Sinninghe Damsté *et al.*
94 (2011). They are dominated by phosphatidylglycerolsulfate (PGS) and
95 phosphatidylglycerolphosphate methyl ether (PGP-Me), while three other components,
96 phosphatidylglycerol (PG) and phosphatidylethanolamine (PE), and an unknown complex
97 phospholipid, were less abundant. All phospholipids were present with an archaeol and an
98 extended archaeol core.

99 The 16S-rRNA gene sequences of the *Haa. sulfurireducens* strains were aligned with
100 those of validly named related species of the order *Halobacteriales* (Gupta *et al.*, 2015) using
101 the SILVA Incremental Aligner (Priessse *et al.*, 2012). The phylogenetic neighbours and
102 pairwise sequence similarities were determined using EzTaxon-e (Kim *et al.*, 2012) and the
103 phylogenetic trees were constructed with MEGA5 (Tamura *et al.* 2011) using the neighbour-
104 joining (NJ) (Saitou & Nei, 1987), maximum-parsimony (MP) (Fitch, 1971) and maximum
105 likelihood (ML) (Felsenstein, 1981) algorithms with 1,000 randomly selected bootstrap
106 replicates. Phylogenetic analyses of the 16S rRNA genes of the four isolates revealed that
107 they are closely related to each other (at least 99% 16S rRNA gene similarity) and, in fact,
108 represent a single genetic species. These strains were quite distant from the nearest described
109 members of the family *Halobacteraceae*, forming a separate genus-level lineage together with
110 some cloned sequences from various hypersaline habitats (**Fig. 2**).

111 The novel isolates were clearly different from all previously described haloarchaea in
112 respect of their metabolism. First, all strains were obligately anaerobic respirers. Next, their
113 metabolism was extremely narrow, limited to acetate and pyruvate as *e*-donors/C source and

114 elemental sulfur as *e*-acceptor. The details of anaerobic growth kinetics have been described
115 previously (Sorokin *et al.*, 2016). In general, the cultures growing with acetate produced more
116 sulfide (up to 9 mM in one month) and less biomass than the cultures grown on pyruvate.
117 Apart from sulfide, trace amounts of volatile organic sulfur were detected in stationary culture
118 of strain HSR2, including carbon disulfide and methanliol. To our knowledge, the formation
119 of these reduced sulfur compounds had never been previously observed in known sulfur-
120 reducing prokaryotes. The optimal growth occurred at 4 M NaCl and within the range from 3
121 to 5 M and at optimal temperature of 37-40°C.

122 This type of catabolism has not been demonstrated previously in any pure culture of
123 haloarchaea and the discovery of such haloarchaea has a broad implication on the possible
124 ecological role of extreme halophiles. Together with the recent demonstration of the ability of
125 haloarchaea to oxidize CO (King, 2015), to participate in dissimilatory arsenic cycling
126 (Rascovan *et al.*, 2015) and to actively mineralize such insoluble polymers as chitin and
127 cellulose (Sorokin *et al.*, 2015), it significantly shifts our perception of haloarchaea as an
128 important biogeochemical actor in hypersaline habitats.

129
130 Overall, on the basis of phenotypic and genetic differences, the novel extremely halophilic
131 and obligately anaerobic sulfur-respiring isolates are suggested to be placed into a new genus
132 and species within the halobacteria for which a name *Halanaeroarchaeum sulfurireducens* is
133 proposed.

134
135 **Description of *Halanaeroarchaeum* gen. nov.**
136 [hal.an.ae.ro.ar.chae'um Gr.n. *hals*, *halos* salt of the sea; Gr. pref. *an*, not; Gr. n. *aer aeros*,
137 air; N.L. neut. n. *archaeum* archaeon from Gr. adj. *archaios*-ê-on ancient; N.L. neut. n.
138 *Halanaeroarchaeum* - anaerobic halophilic archaeon]
139

140 Obligately anaerobic haloarchaea with the ability to grow by sulfur-dependent respiration on
141 acetate. Extremely halophilic, neutrophic members of the family *Halobacteraceae*. The cells
142 are irregularly shaped, flattened, nonmotile. Recommended three-letter abbreviation: Haa.

143

144 **Description of *Halanaeroarchaeum sulfurireducens* sp. nov.**

145 [sul.fu.ri.re.du'cens L. n. *sulfur*, L. part. adj. *reducens* leading back, reducing, N.L. part. adj.
146 *sulfurireducens* reducing sulfur]

147

148 The cells are angled flattened nonmotile coccoids to board-like rods, 0.5-1.5x1-2 μm . The cell
149 wall consists of a thin proteinaceous layer. The cells lyze in hypotonic solutions below 1 M
150 NaCl. Red pigments are absent. The core membrane diether lipids are composed of C20-C20
151 DGE (archaeol) and C20-C25 DGE (extended archaeol) in equal proportion. The polar
152 phospholipids included (in the order of abundance) phosphatidylglycerolsulfate (PGS),
153 phosphatidylglycerolphosphate methyl ether (PGP-Me), phosphatidylglycerol (PG) and
154 phosphatidylethanolamine (PE). Obligately anaerobic growing by elemental sulfur respiration
155 with either acetate or pyruvate as *e*-donor/C source. Ammonium is utilized as N-source.
156 Optimum growth temperature is 37°C (maximum at 46°C). Extremely halophilic with a range
157 of NaCl for growth from 3 to 5 M (optimum at 4 M) and neutrophilic with a pH range for
158 growth with acetate and sulfur from 6.5 to 8 (optimum at 7.0-7.5). The G + C content of the
159 DNA is 62.8 mol% (genome). Habitat - hypersaline lakes. The type strain (HSR2^T=JCM
160 30661^T=UNIQEM U935^T) was isolated from mixed anaerobic sediments of hypersaline
161 chloride-sulfate lakes in Kulunda Steppe (Altai, Russia).

162

163 **ACKNOWLEDGEMENTS**

164 This work was supported by the Russian Foundation for Basic Research (16-04-00035) to DS and IK.

165 J.S.S.D. and DS were supported by the Gravitation grant SIAM (24002002). MY thanks for funding

166 the Project INMARE H2020-BG-2014-2634486 and RITMARE Flagship Project of the Italian

167 Ministry of University and Research

168

169

170

171

172 **REFERENCES**

- 173
174
175 **Felsenstein, J. (1981).** Evolutionary trees from DNA sequences: a maximum likelihood approach. *J.*
176 *Mol. Evol.* **17**, 368–376.
177
178 **Fitch, W.M. (1971).** Toward defining the course of evolution: minimum change for a specific tree
179 topology. *Syst. Zool.* **20**, 406–416.
180
181 **Gupta, R.S., Naushad, S. & Baker S. (2015).** Phylogenomic analyses and molecular signatures for
182 the class *Halobacteria* and its two major clades: a proposal for division of the class *Halobacteria* into
183 an emended order *Halobacteriales* and two new orders, *Haloferacales* ord. nov. and *Natrialbales* ord.
184 nov. *Int. J. Syst. Evol. Microbiol.* **65**, 1050-1069.
185
186 **Kim, O.S., Cho, Y.J., Lee, K., Yoon, S.H., Kim, M., Na, H., Park, S.C., Jeon, Y.S., Lee, J.H., Yi,**
187 **H., Won, S. & Chun, J. (2012).** Introducing EzTaxon-e: a prokaryotic 16S rRNA gene sequence data-
188 base with phylotypes that represent uncultured species. *Int. J. Syst. Evol. Microbiol.* **62**, 716–721.
189
190 **King, G.M. (2015).** Carbon monoxide as a metabolic energy source for extremely halophilic
191 microbes: Implications for microbial activity in Mars regolith. *Proc. Nat. Ac. Sci.* **112**, 4465-4470.
192
193 **Prüsse, E., Peplies, J. & Glöckner, F.O. (2012).** SINA: accurate high-throughput multiple sequence
194 alignment of ribosomal RNA genes. *Bioinformatics* **28**, 1823–1829.
195
196 **Rascovan, N., Maldonado, J., Vazquez, M.P. & Farías M.E. (2016).** Metagenomic study of red
197 biofilms from Diamante Lake reveals ancient arsenic bioenergetics in haloarchaea. *The ISME J.* **10**,
198 299-309.
199

- 200 **Saitou, N. & Nei, M. (1987).** The neighbor-joining method: a new method for reconstructing
201 phylogenetic trees. *Mol. Biol. Evol.* **4**, 406–425.
- 202
- 203 **Sinninghe Damsté, J.S., Rijpstra, W.I.C., Hopmans, E.C., Weijers J.W.H., Foesel, B.U.,**
204 **Overmann, J. & Dedysh, S.N. (2011).** 13,16-Dimethyl octacosanedioic acid (iso-diabolic acid): A
205 common membrane-spanning lipid of *Acidobacteria* subdivisions 1 and 3. *Appl. Env. Microbiol.* **77**,
206 4147–4154.
- 207
- 208 **Sorokin, D.Y., Zacharova, E.E., Pimenov, N.V., Panteleeva, A.N., Tourova, T.P. & Muyzer, G.**
209 **(2012).** Sulfidogenesis in hypersaline chloride-sulfate lakes of Kulunda Steppe (Altai, Russia). *FEMS*
210 *Microbiol. Ecol.* **79**, 445-453.
- 211
- 212 **Sorokin D.Y., Kublanov I.V., Toschakov S.V. & Kolganova T.V. (2015).** Halo(natrono)archaea
213 isolated from hypersaline lakes utilize cellulose and chitin as growth substrates. *Front. Microbiol.* **6**,
214 article 942.
- 215
- 216 **Sorokin, D.Y., Kublanov, I.V., Gavrilov, S.N., Rojo, D., Roman, P., Golyshin, P.N., Slepak, V.Z.,**
217 **Smedile, F., Ferrer, M., Messina, E., La Cono, V. & Yakimov, M.M. (2016).** Elemental sulfur and
218 acetate can support life of a novel strictly anaerobic haloarchaeon. *The ISME J* **10**, 240-252.
- 219
- 220 **Tamura, K., Peterson, D., Peterson, N., Stecher, G., Nei, M. & Kumar, S. (2011).** MEGA5:
221 molecular evolutionary genetics analysis using maximum likelihood, evolutionary distance, and
222 maximum parsimony methods. *Mol. Biol. Evol.* **28**, 2731–2739.
- 223
- 224 **Villanueva, L., Sinninghe Damsté, J.S. & Schouten, S. (2014)** A re-evaluation of the archaeal
225 membrane lipid biosynthetic pathway. *Nature Rev. Microbiol.* **12**, 438–448.
- 226

227 **Weijers, J.W.H., Panoto, E., van Bleijswijk J., Schouten, S., Balk, M., Stams, A.J.M., Rijpstra,**
228 **W.I.C. & Sinninghe Damsté, J.S. (2009)** Constraints on the biological source(s) of the orphan
229 branched tetraether membrane lipids. *Geomicrobiol. J.* **26**, 402-414.

230

231

232

233

234

235

236

237

238 **Legends to the figures**

239

240 **Fig. 1** Cell morphology of sulfur-respiring haloarchaea grown anaerobically at 4 M NaCl. (**a-**
241 **d**), phase contrast microscopy. (**a**), HSR2^T grown with acetate; (**c-d**), HSR3, HSR4 and HSR5
242 grown with pyruvate. (**e**), thin section electron microscopy of strain HSR2^T.

243

244 **Fig. 2.** Phylogenetic position of novel anaerobic sulfur-respiring haloarchaeae based on the
245 16S rRNA gene within the order *Halobacterales* (Gupta *et al.*, 2015). The numbers on the
246 nodes indicate the bootstrap values (>75%) calculated using the NJ algorithm probabilities.
247 The tree was rooted with *Natronomonas moolapensis* (AB576127), *Natronomonas pharaonis*
248 (CR936257) and *Halomarina oriensis* (AB519798) sequences. *Methanohalophilus halophilus*
249 (FN870068) sequence served as the outgroup. The bar represents 0.05 accumulated changes
250 per nucleotide.

251

252

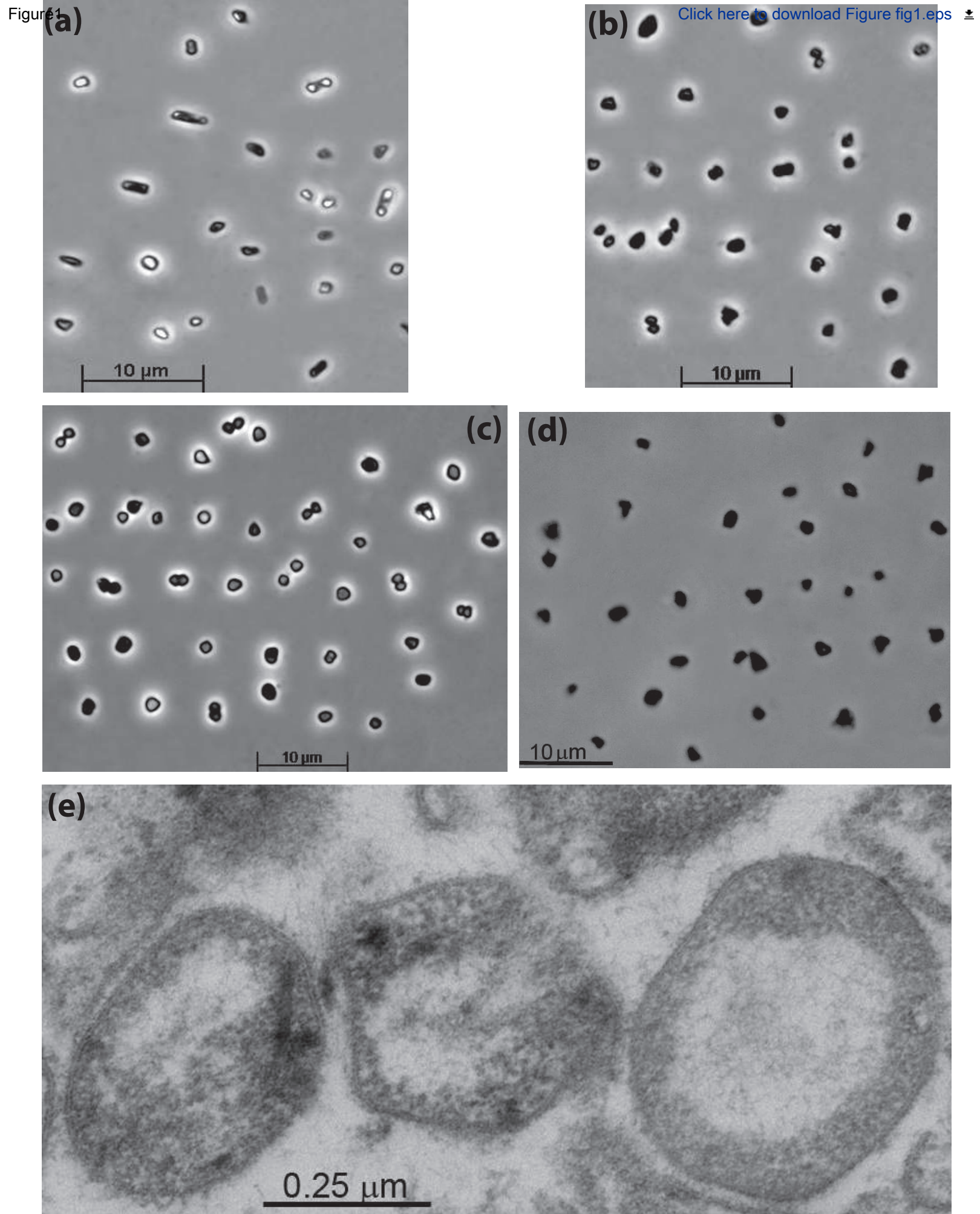
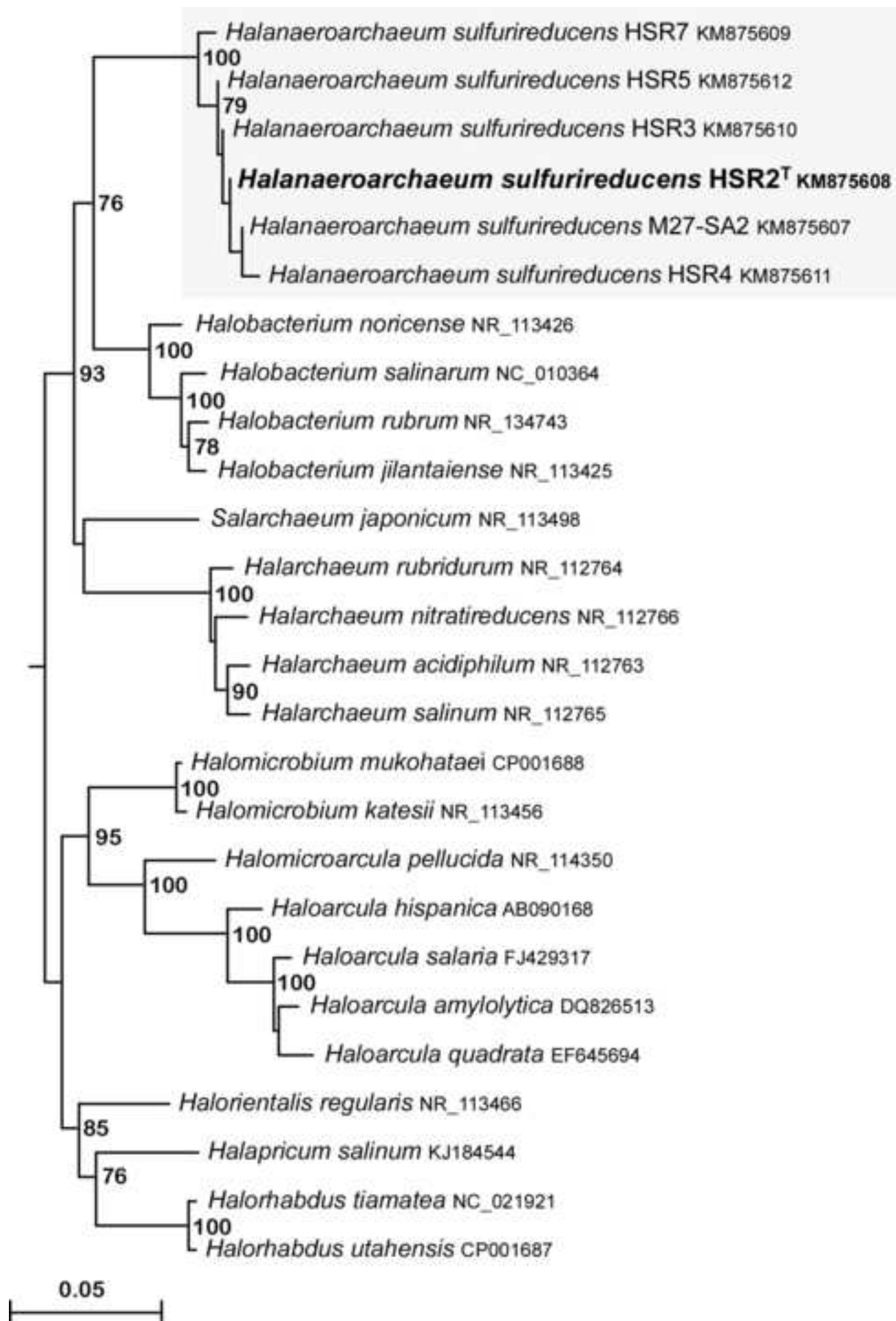
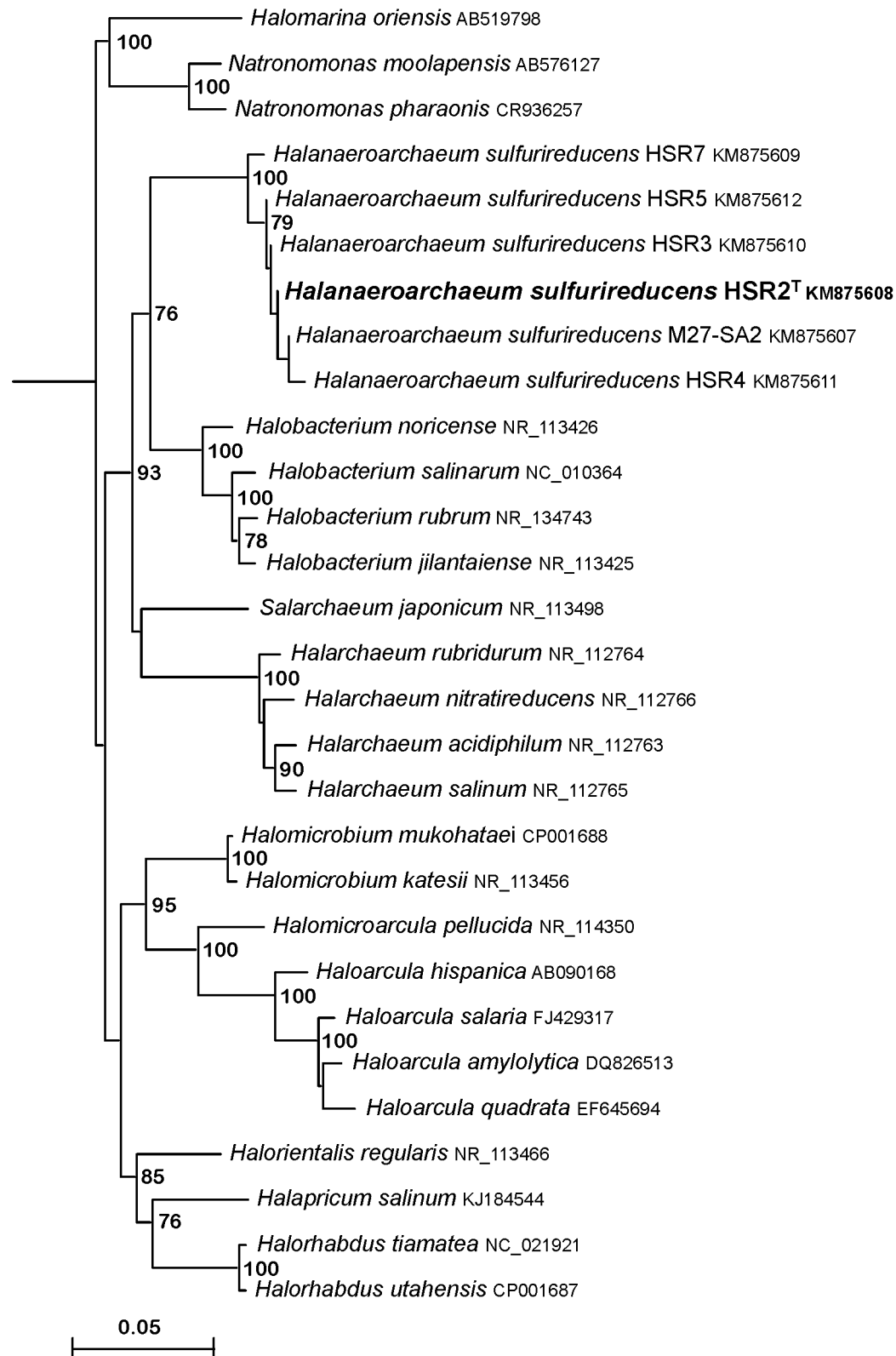


fig.1







[Click here to access/download](#)

Response to Reviewer

[Halanaeroarchaeum_revision_marked.pdf](#)

