

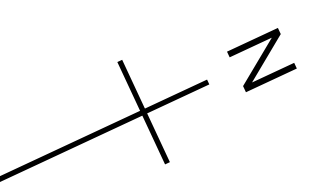
[1] arena
 [2] covered playground
 [3] market
 [4] meeting steps

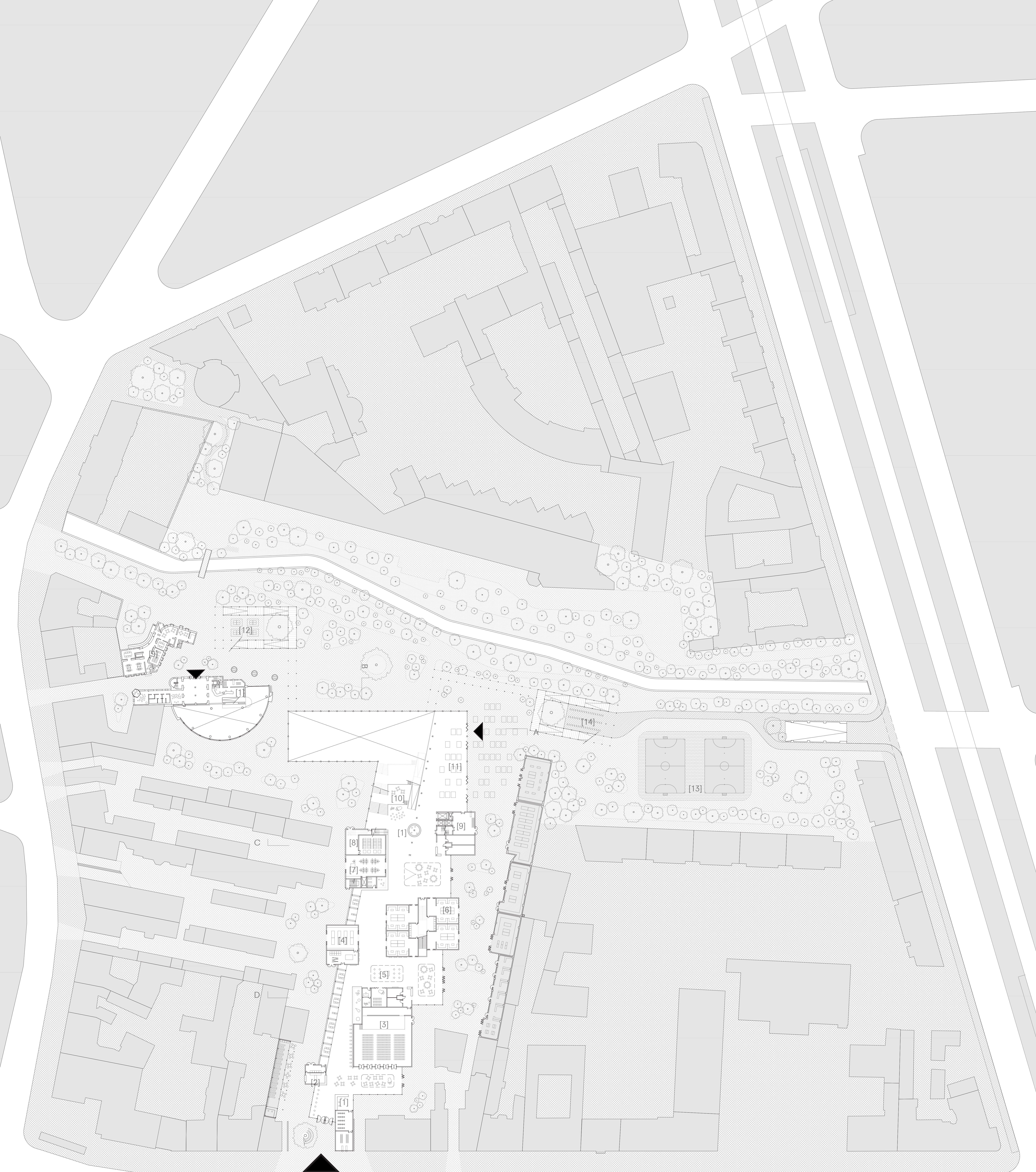
[5] logistics ent. turntable & control
 [6] loading dock & sorting area
 [7] temporary storage

[8] plant room with geothermal closed-loop heat pump
 [9] rainwater collection tanks

Underground Floor (-4.6)

30m

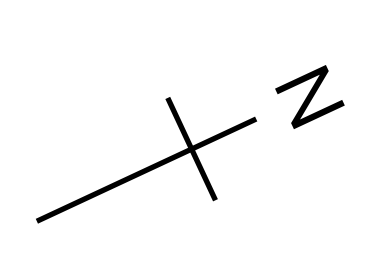




- | | | | |
|--------------------------------------|------------------------------------|----------------------|-----------------------|
| [1] reception | [5] exhibition area | [8] edge data centre | [12] ping-pong tables |
| [2] cafe | [6] cooking studios | [9] offices | [13] futsal courts |
| [3] performance hall & music studios | [7] digital studio & vr experience | [10] happy steps | [14] bike parking |
| [4] crafts studio | | [11] informal market | |

Ground Floor (+0.0)

30m





[1] spiral stairs/ramp to roof level

[2] community garden plots

[3] community garden worktables

[4] offices

[5] individual study cells

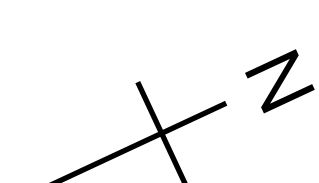
[6] classrooms

[7] collections

[8] sunset deck

First Floor (+5.4)

30m

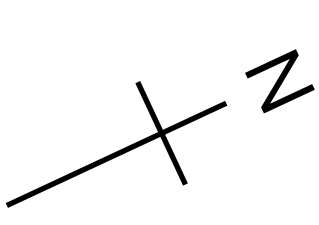




- [1] offices
- [2] staff-only roof
- [3] extensive green roof

Upper Floors (+10.2, 15.0, 19.8)

30m

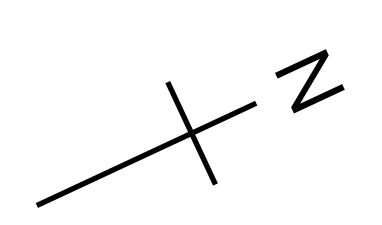




[3] extensive green roof

Roof Floors

30m





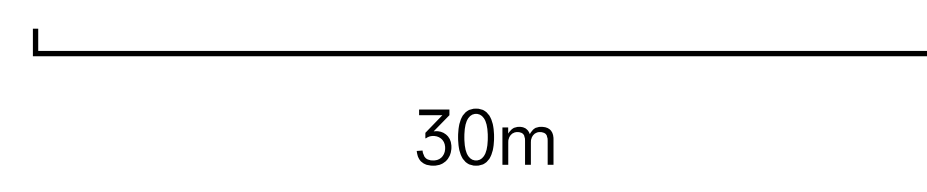
Section A

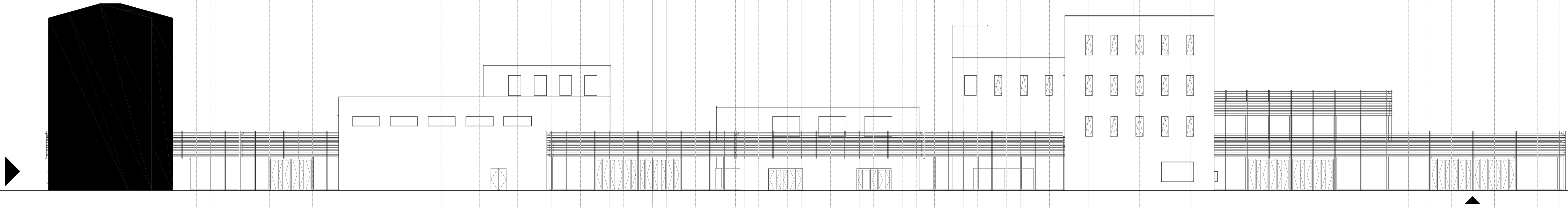
- [1] logistics ent.
- [2] market
- [3] arena



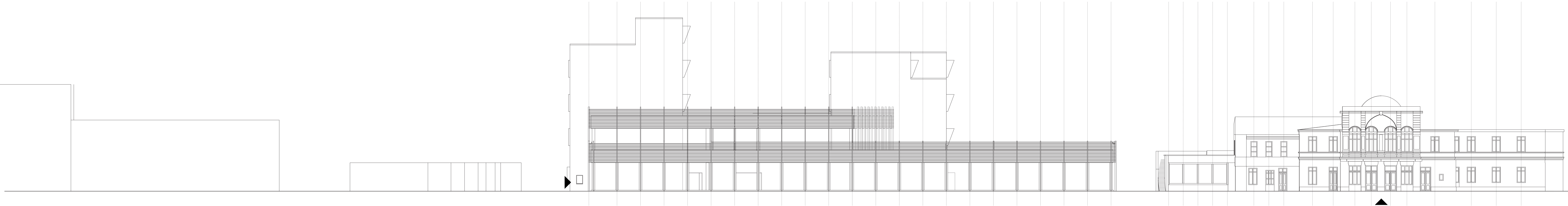
Section B

- [1] market
- [2] classrooms, collections
- [3] cooking studios
- [4] community garden
- [5] exhibition
- [6] music studios
- [7] performance hall
- [8] cafe

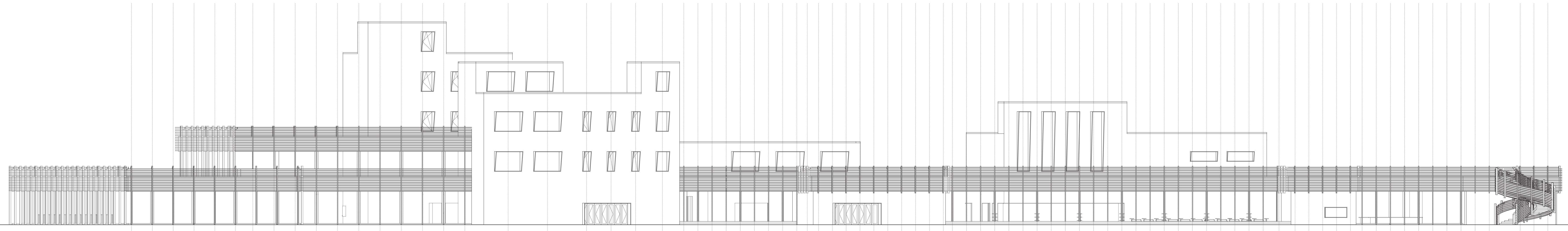




South Elevation
(Prinzenallee-River Panke)



East Elevation
(Futsal Courts-Existing Library)

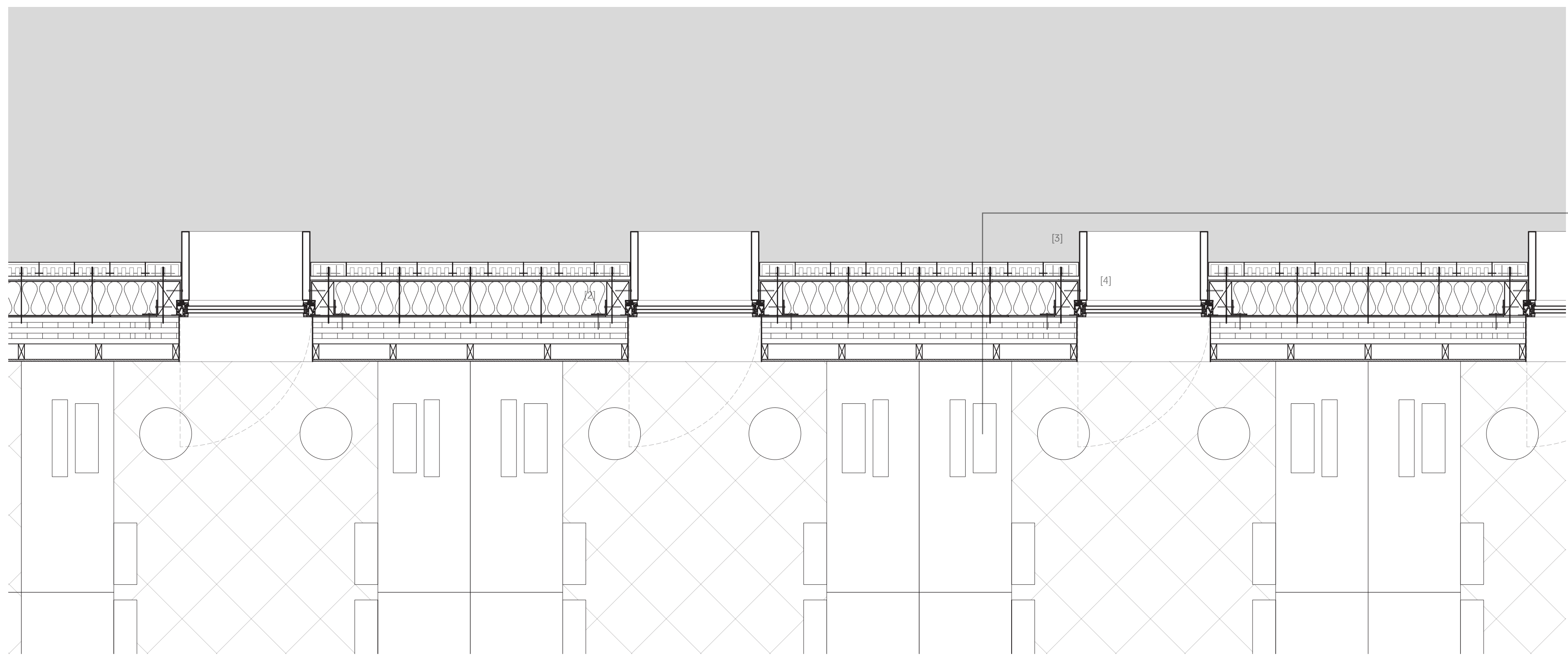


North Elevation
(River Panke-Prinzenallee)

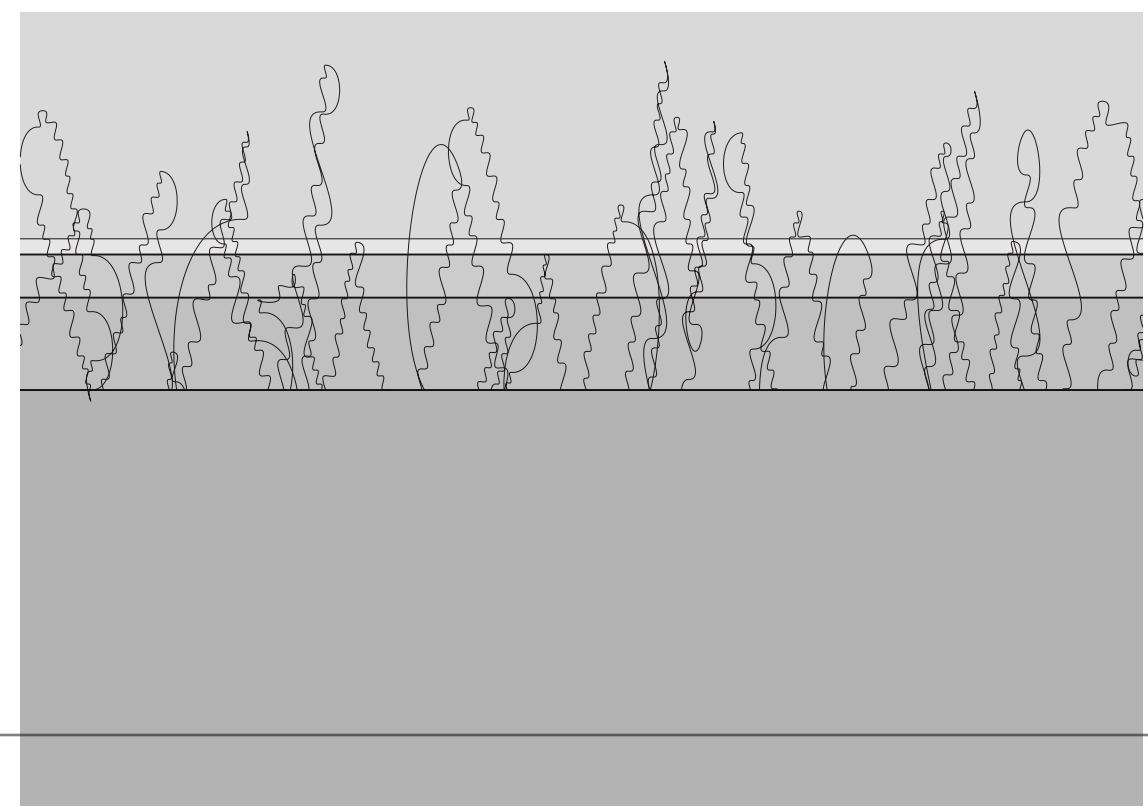
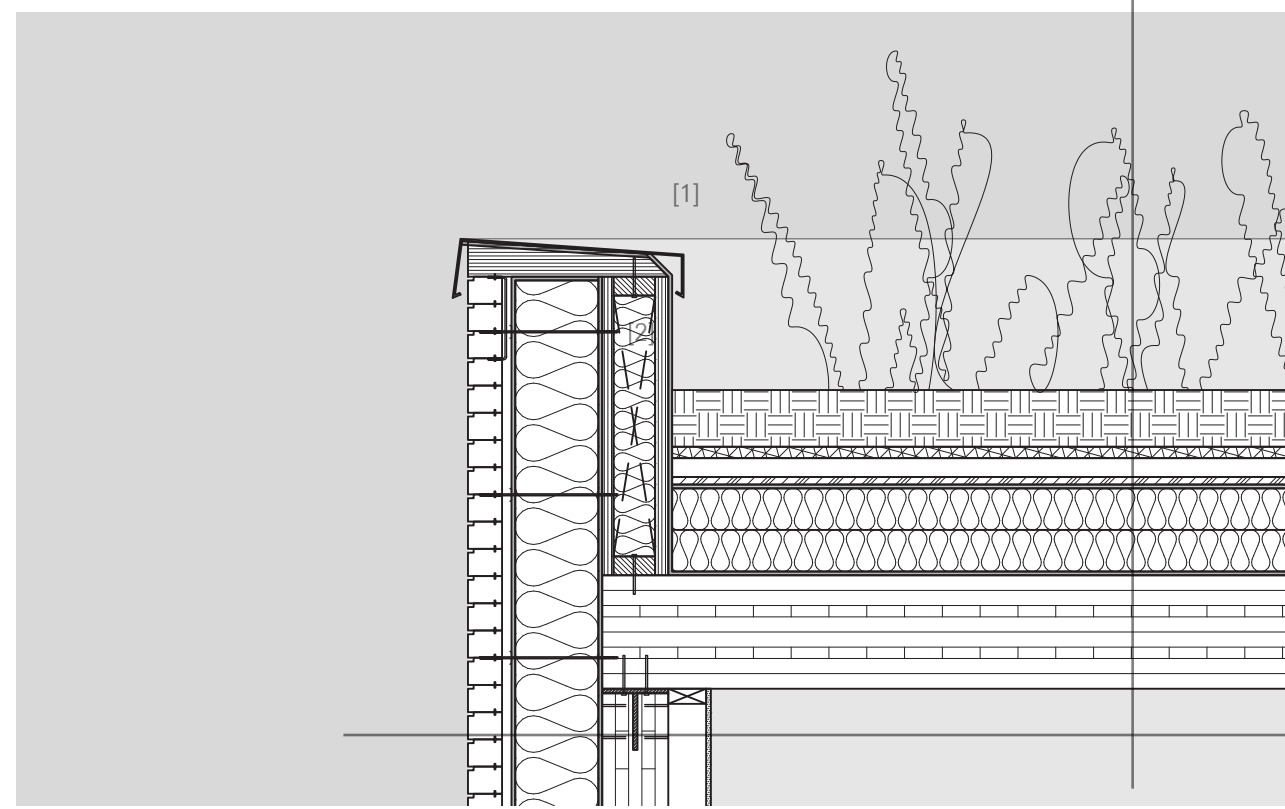
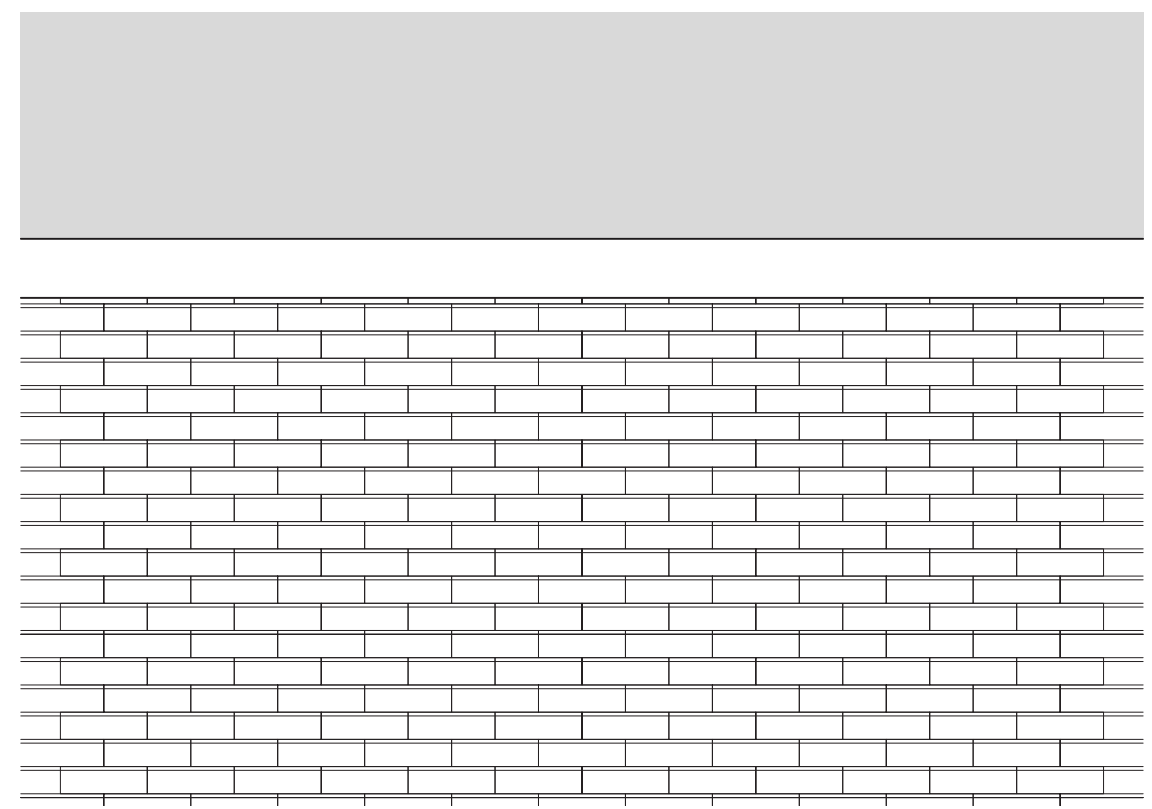


West Elevation
(Main Entrance at Prinzenallee)

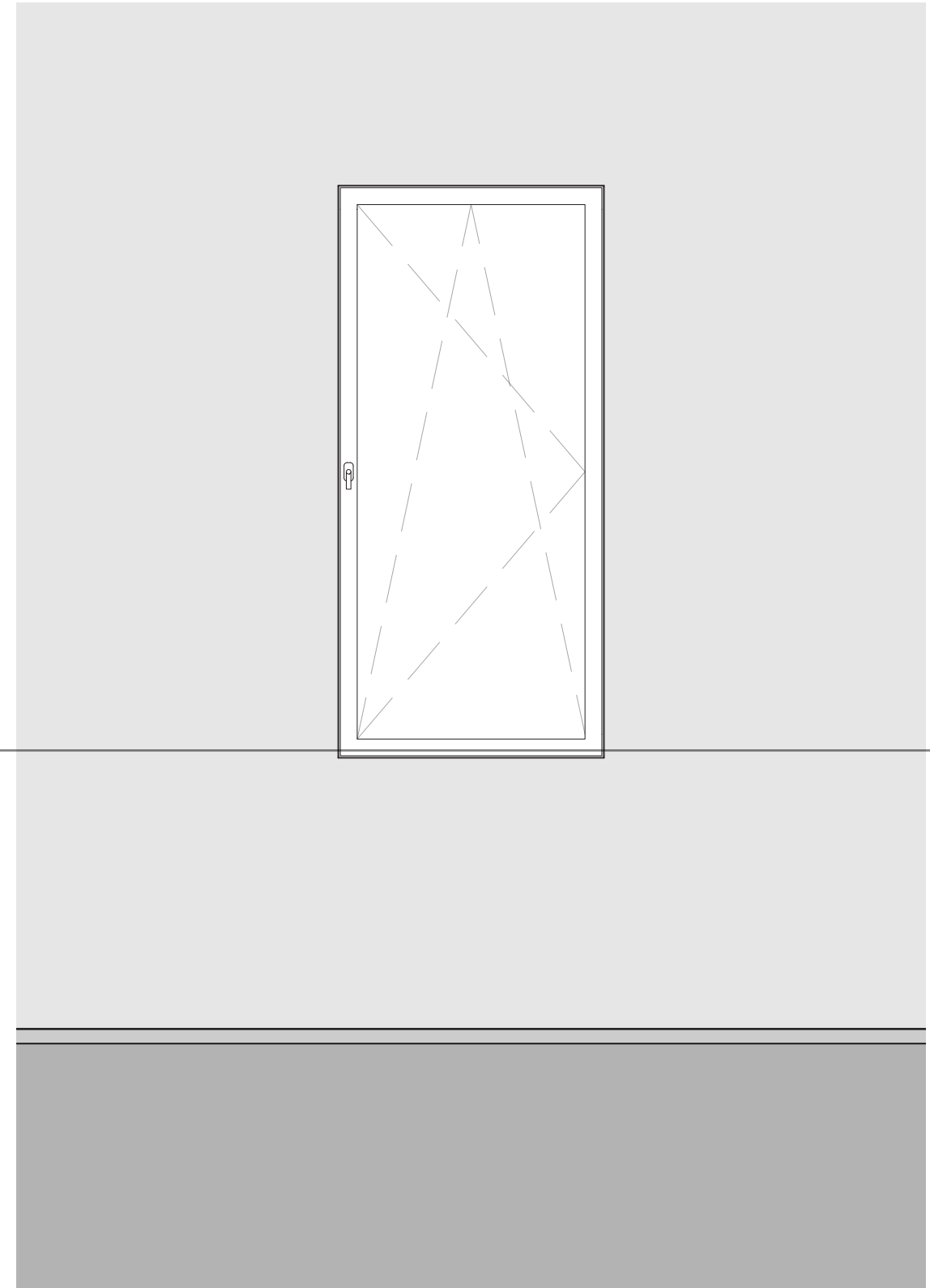
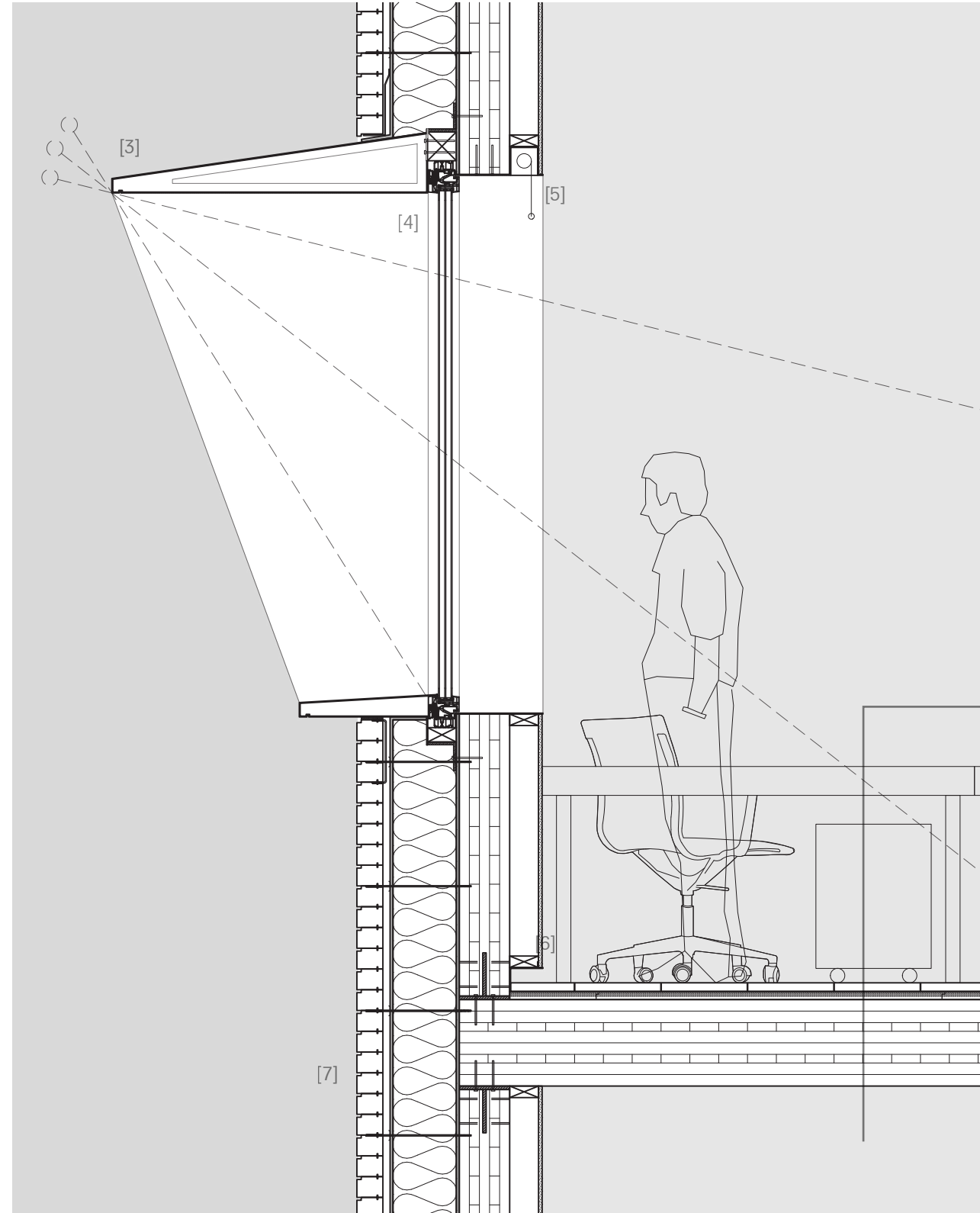
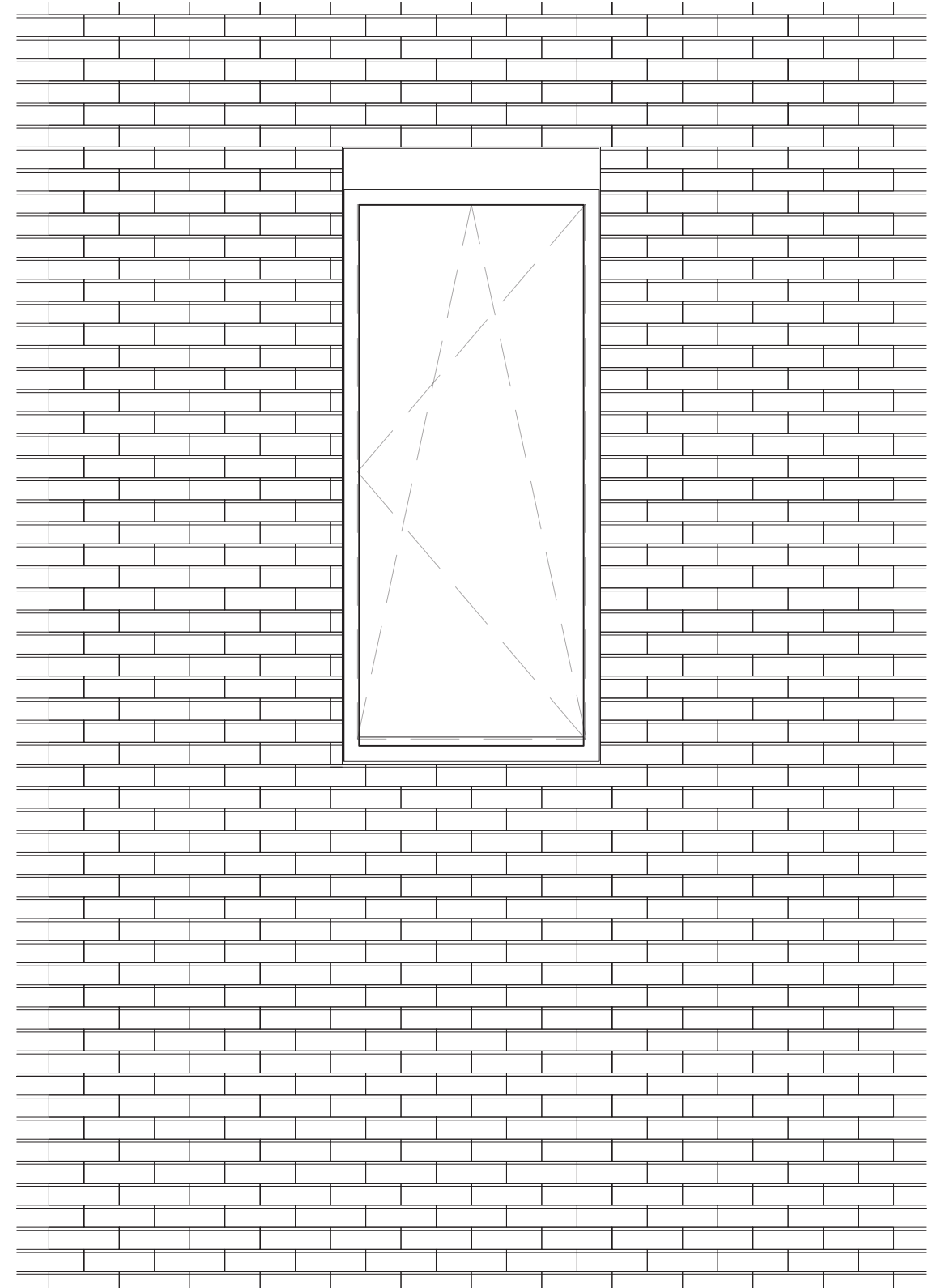
30m



Dry-stack Brick Facade
($u = 0.18 \text{ W/m}^2\text{K}$)
90mm dry-stack brick with S/S tie every six rows, two stretchers
25mm air gap
waterproofing
220mm wood fibre insulation boards ($\lambda = 0.44 \text{ W/mK}$)
damp proof membrane
175mm CLT wall



Extensive Green Roof
($u = 0.11 \text{ W/m}^2\text{K}$)
Drought-tolerant perennials, herbs, sedum species
150mm growing medium
30mm filter fabric
50mm drainage layer
20mm root barrier
waterproofing
220mm XPS ($\lambda = 0.35 \text{ W/mK}$)
EPDM waterproofing
300mm (8aa) CLT slab



Dry-stack Brick Facade
($u = 0.18 \text{ W/m}^2\text{K}$)
90mm dry-stack brick with S/S tie every six rows, two stretchers
25mm air gap
waterproofing
220mm wood fibre insulation boards ($\lambda = 0.44 \text{ W/mK}$)
damp proof membrane
175mm CLT wall

Floor
($u = 0.23 \text{ W/m}^2\text{K}$)
30mm dry laid ceramic tiles with cork backing
28mm dry floor screed gypsum fibreboard with wood fibre backing
300mm (8aa) CLT slab

Raised Flooring for Data Centre
($u = 0.23 \text{ W/m}^2\text{K}$)
32mm thick, 600x600mm panels with air flow perforations where necessary
Pedestals bolted to 300mm concrete slab

Underground
($u = 0.23 \text{ W/m}^2\text{K}$)
waterproofing
140mm XPS ($\lambda = 0.35 \text{ W/mK}$)
500mm concrete wall

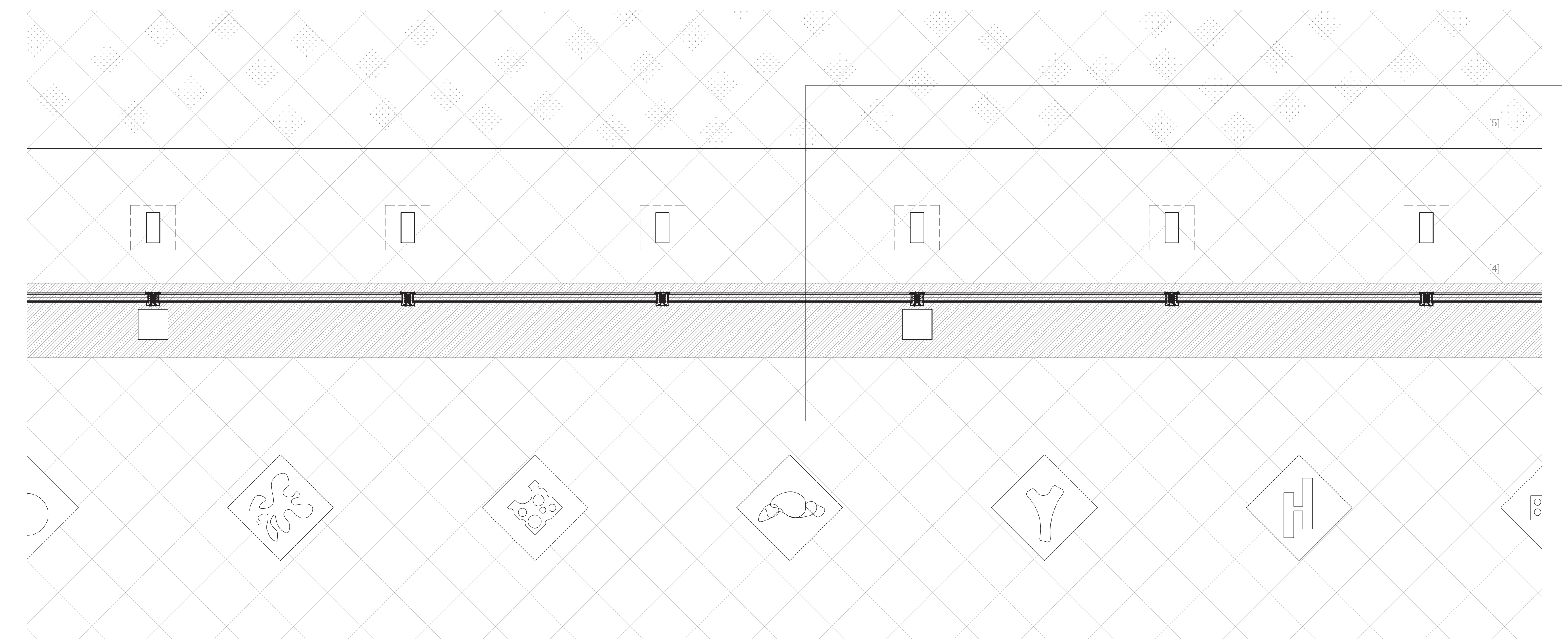
External Elevation

Section

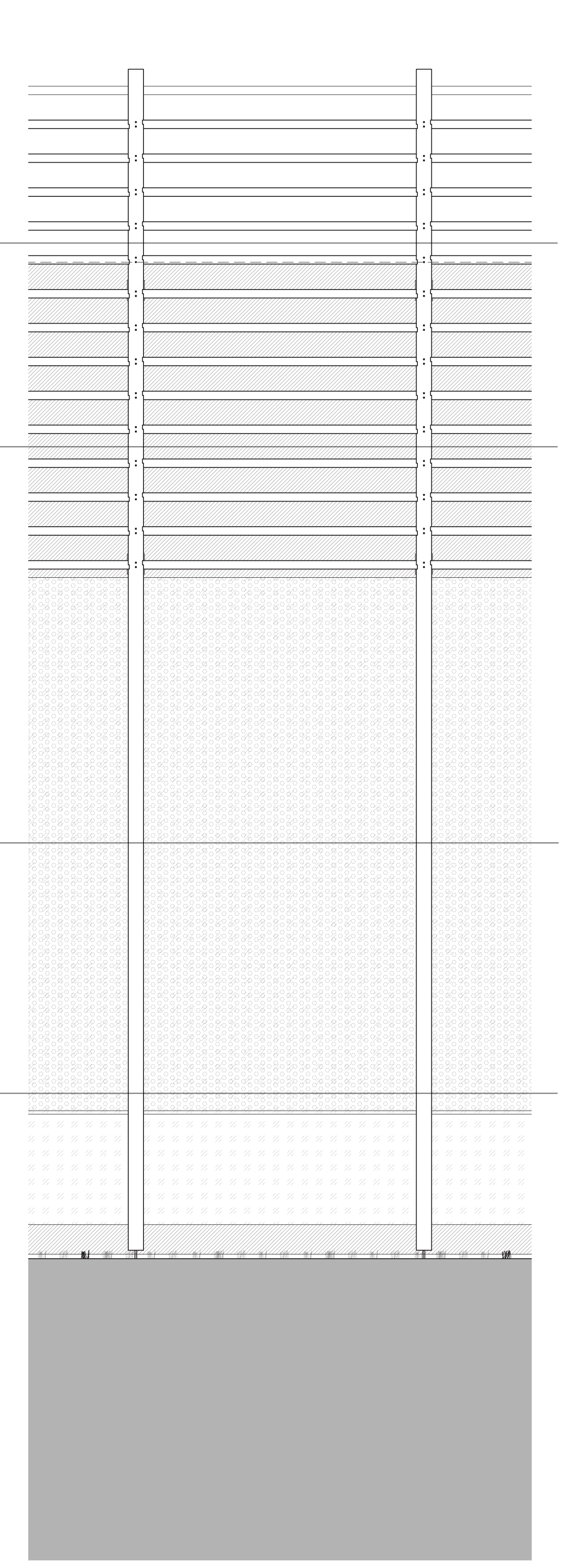
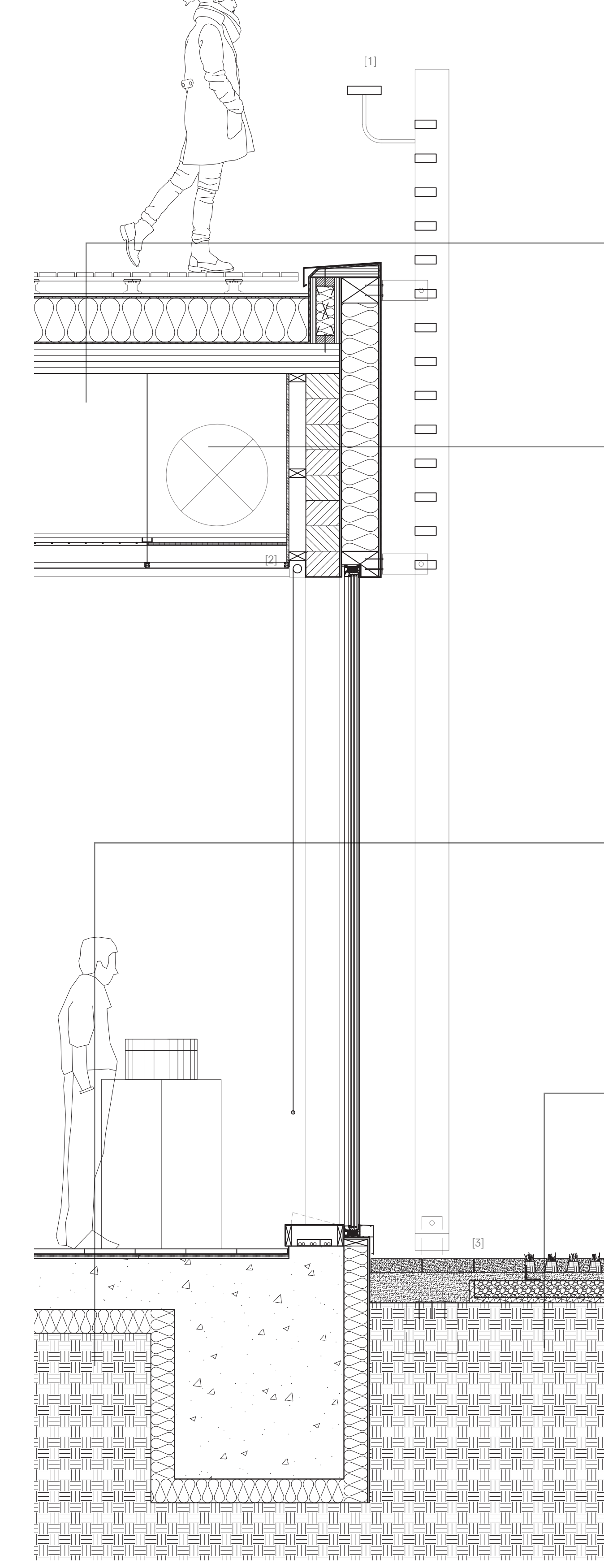
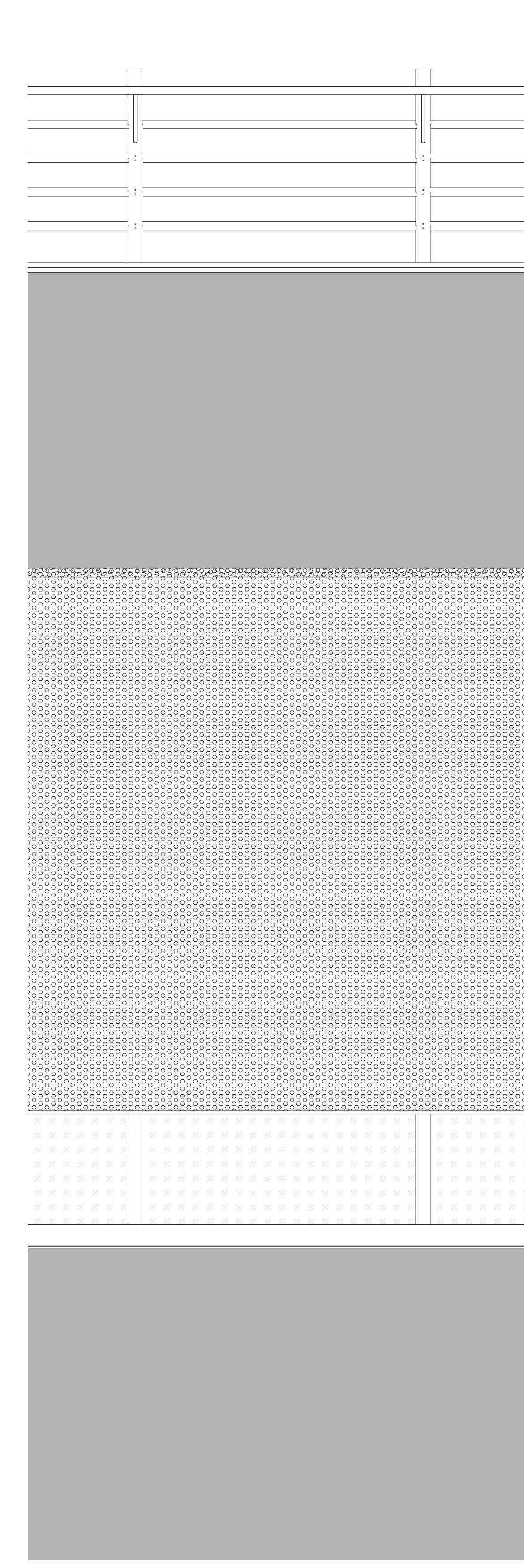
Internal Elevation

Facade Details A, B, C (Closed Mass)

- [1] 3mm thick aluminium capping
- [2] S/S termination clamp for dry-stack brick system
- [3] 3mm aluminium canopy supported by steel console bolted to wood blocking
- [4] Triple glazed operable window with aluminium frame ($u = 0.8 \text{ W/m}^2\text{K}$)
- [5] Internal sunscreen curtain
- [6] Recessed aluminium skirting
- [7] Concealed metal plate bolted to slab, secured with tight fit dowels
- [8] Brick ledge supporting dry-stack brick system



Freestanding Wood Batten Structure & Facade
($u = 0.18 \text{ W/m}^2\text{K}$)
200x80mm, 150x50mm pressure-treated spruce battens interlocked with asphaltic joints, verticals fixed to steel profile bolted to blocking
3mm aluminium panel bolted to blocking
220mm wood fibre insulation boards ($\lambda = 0.44 \text{ W/mK}$)
waterproofing
1200x200mm glulam edge beam



Roof Deck
($u = 0.109 \text{ W/m}^2\text{K}$)
Wood decking on pedestals
15mm gypsum protective roof board
EPDM waterproofing
260mm XPS ($\lambda = 0.35 \text{ W/mK}$)
damp proof membrane
175mm CLT

Freestanding Wood Batten Structure & Facade
($u = 0.18 \text{ W/m}^2\text{K}$)
200x80mm, 150x50mm pressure-treated spruce battens interlocked with asphaltic joints, verticals fixed to steel profile bolted to blocking
3mm aluminium panel bolted to blocking
220mm wood fibre insulation boards ($\lambda = 0.44 \text{ W/mK}$)
waterproofing
1200x200mm glulam edge beam

Floor
($u = 0.23 \text{ W/m}^2\text{K}$)
30mm dry laid ceramic tiles with cork backing
28mm dry floor screed gypsum fibreboard with wood fibre backing
300mm concrete slab
140mm XPS ($\lambda = 0.35 \text{ W/mK}$)

Outdoor Landscape Paving
80mm thick grass paving tiles
50mm bedding sand
100mm compacted aggregate soil
30mm filter fabric
Compacted sub-grade soil

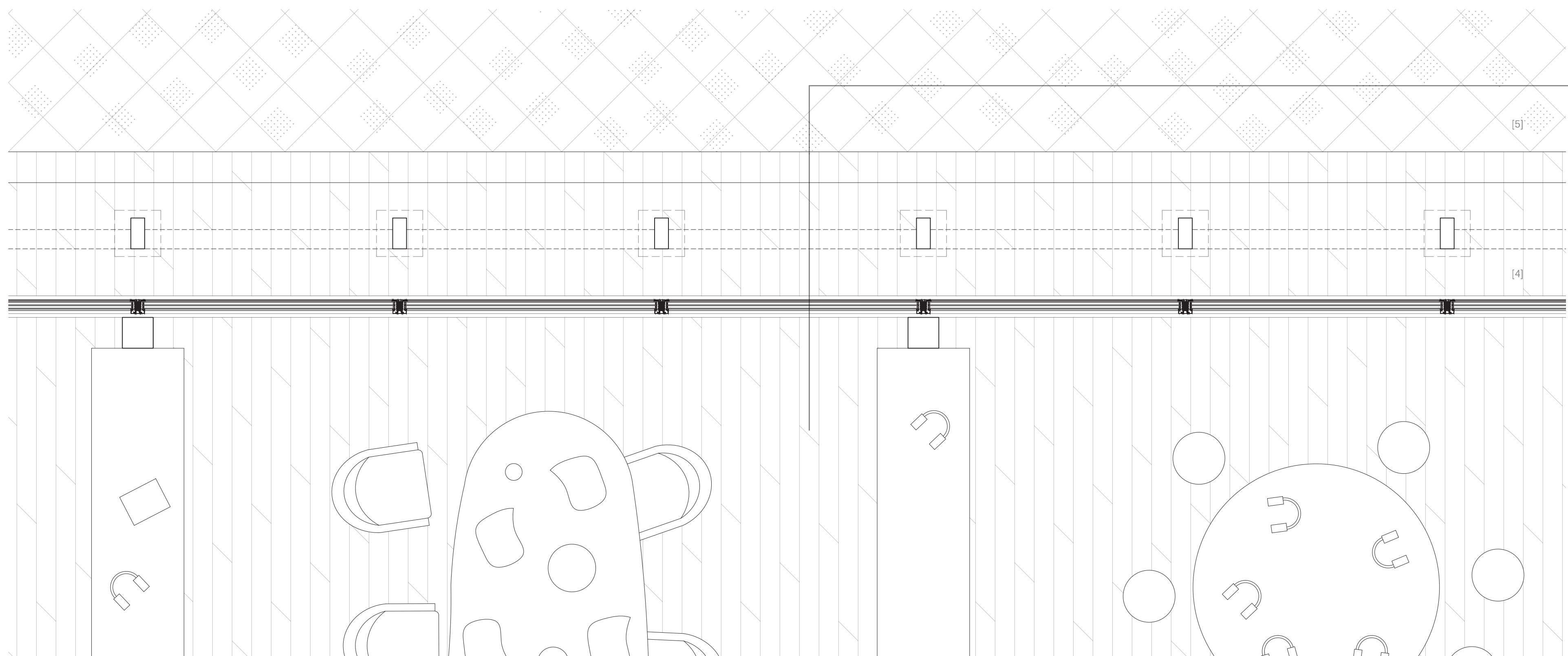
External Elevation

Section

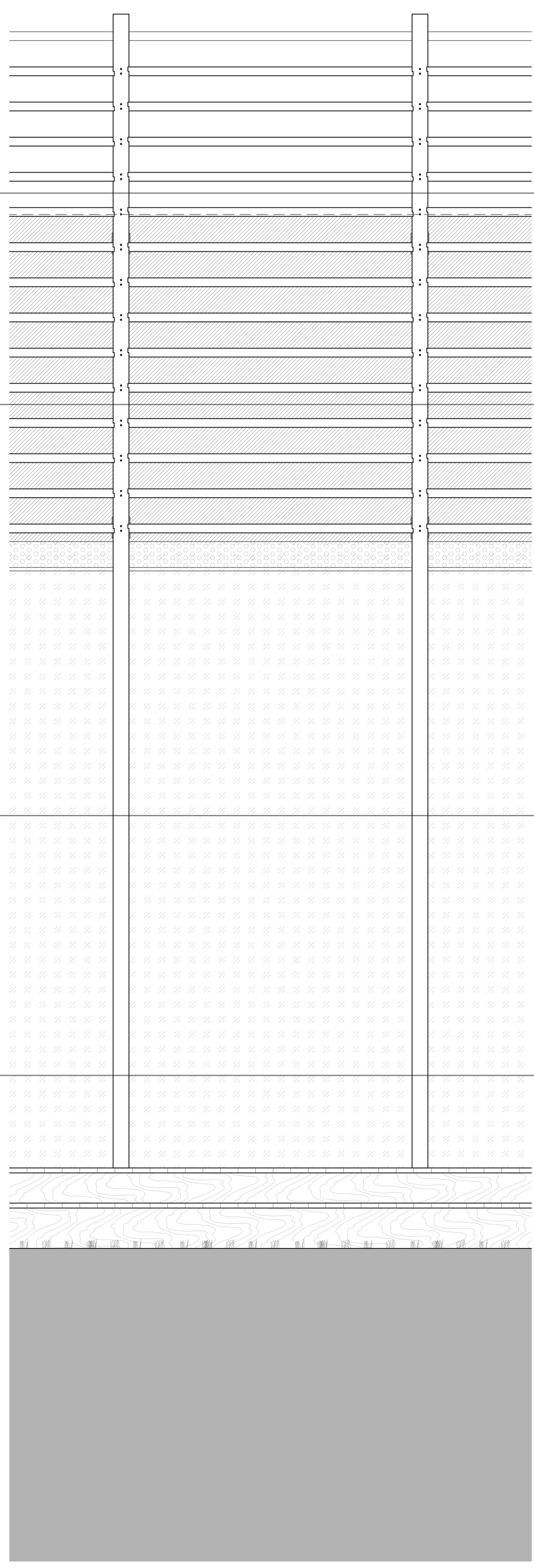
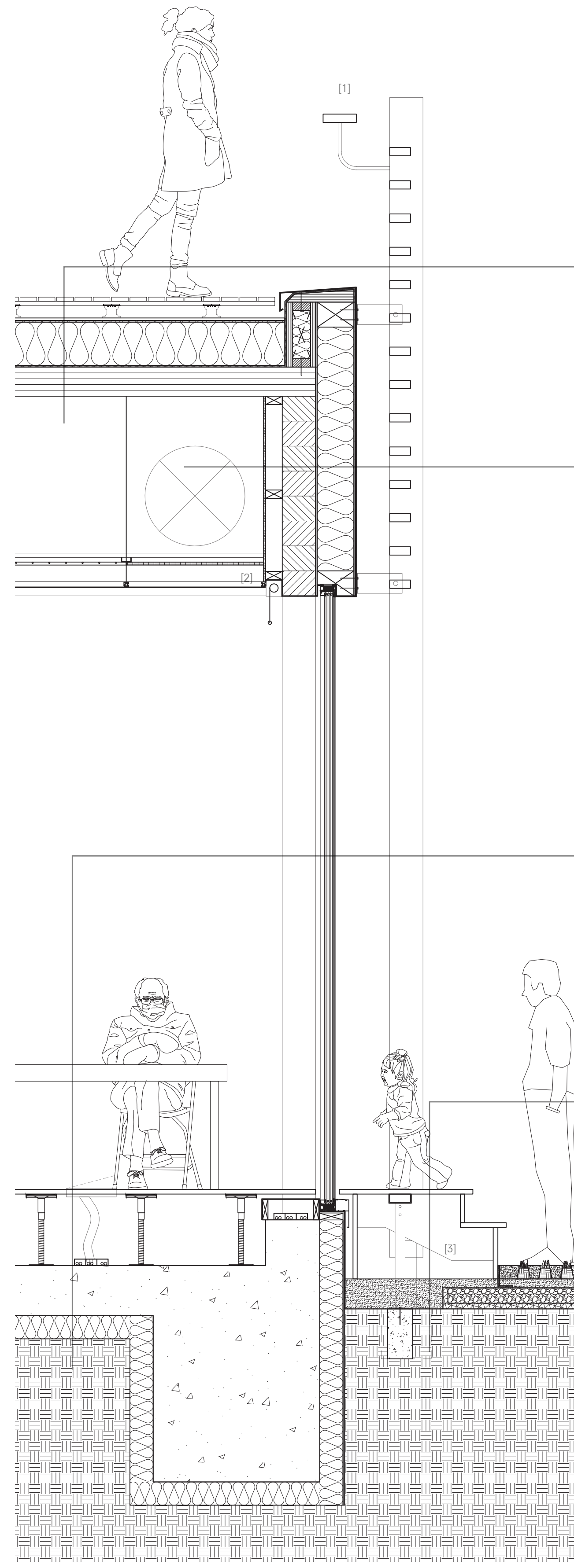
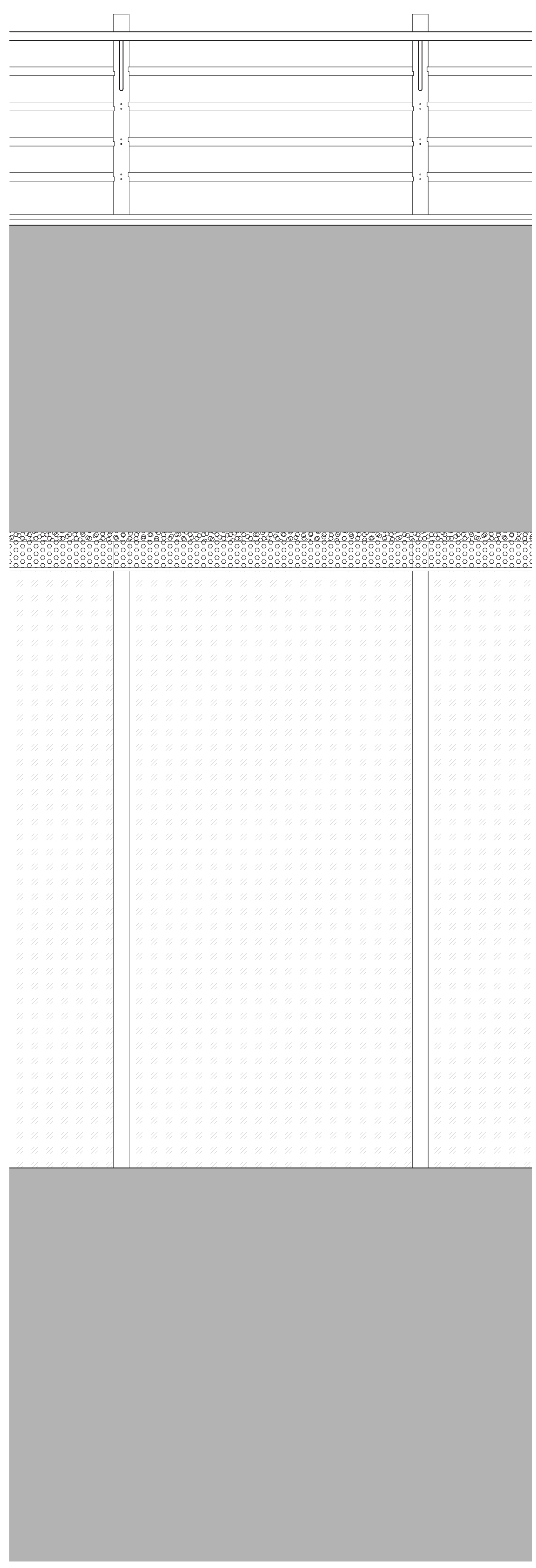
Internal Elevation

Facade Details D, E1 (Open Space - Typical Situation)

- [1] 200x50mm aluminium handrail at 1m AFFL
- [2] Internal sunscreen curtain
- [3] separate footing for vertical facade element on raised column base
- [4] triple glazed window wall with aluminium frame ($u = 0.8 \text{ W/m}^2\text{K}$)
- [5] edge restraint between floor pavings



Freestanding Wood Batten Structure & Facade
 (u = 0.18 W/m²K)
 200x90mm, 150x50mm pressure-treated spruce battens interlocked with asphaltene joints, verticals fixed to steel profile bolted to blocking
 3mm aluminium panel bolted to blocking
 220mm wood fibre insulation boards (λ = 0.44 W/mK)
 waterproofing
 1200x200mm glulam edge beam



Roof Deck
 (u = 0.109 W/m²K)
 Wood decking on pedestals
 15mm gypsum protective roof board
 EPDM waterproofing
 260mm XPS (λ = 0.35 W/mK)
 damp proof membrane
 175mm CLT

Freestanding Wood Batten Structure & Facade
 (u = 0.18 W/m²K)
 200x90mm, 150x50mm pressure-treated spruce battens interlocked with asphaltene joints, verticals fixed to steel profile bolted to blocking
 3mm aluminium panel bolted to blocking
 220mm wood fibre insulation boards (λ = 0.44 W/mK)
 waterproofing
 1200x200mm glulam edge beam

Floor
 (u = 0.23 W/m²K)
 28mm raised wood deck on adjustable pedestals
 300mm concrete slab
 140mm XPS (λ = 0.35 W/mK)

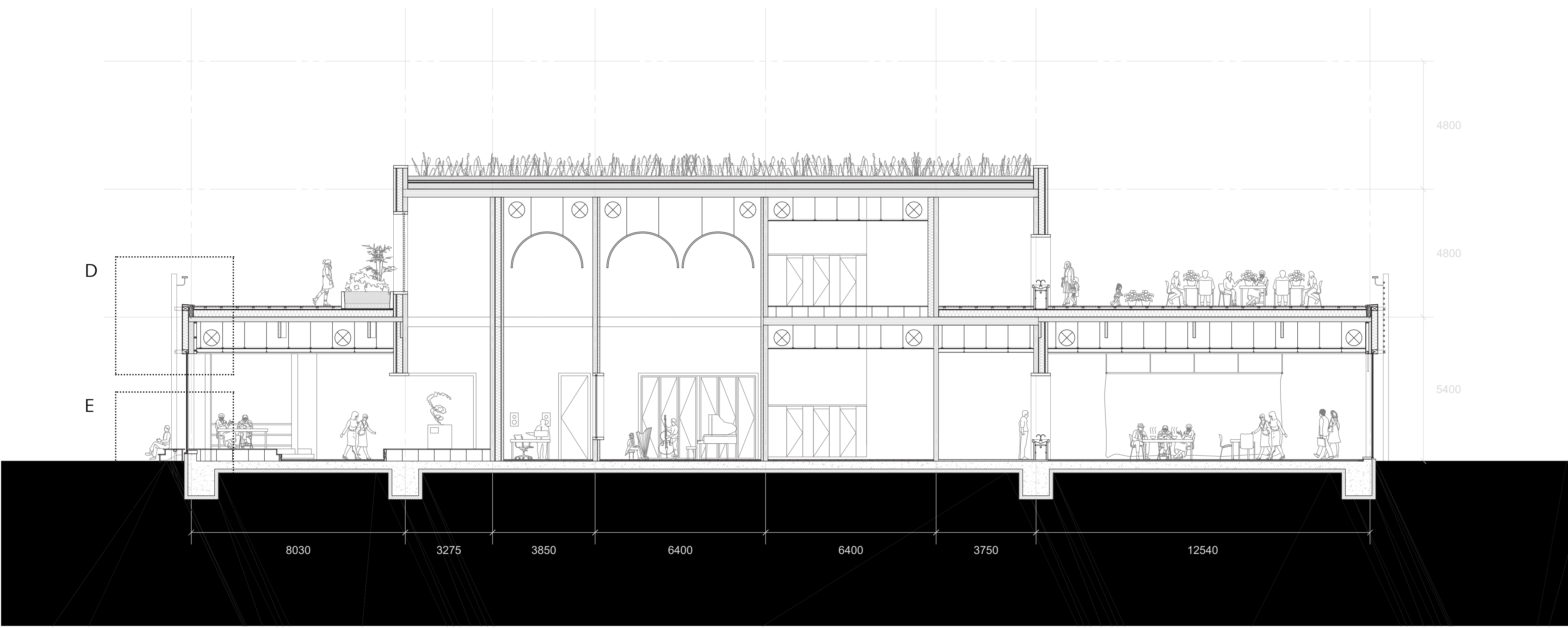
Outdoor Raised Deck
 28mm raised wood deck supported by wood beam & stringers from freestanding wood batten facade



Section C

Facade Details D, E2
 (Open Space - Wood Deck Situation)

- [1] 200x50mm aluminium handrail at 1m AFFL
- [2] Internal sunscreen curtain
- [3] separate footing for vertical facade element on raised column base
- [4] triple glazed window wall with aluminium frame (u = 0.8 W/m²K)
- [5] edge restraint between floor pavings



Section D