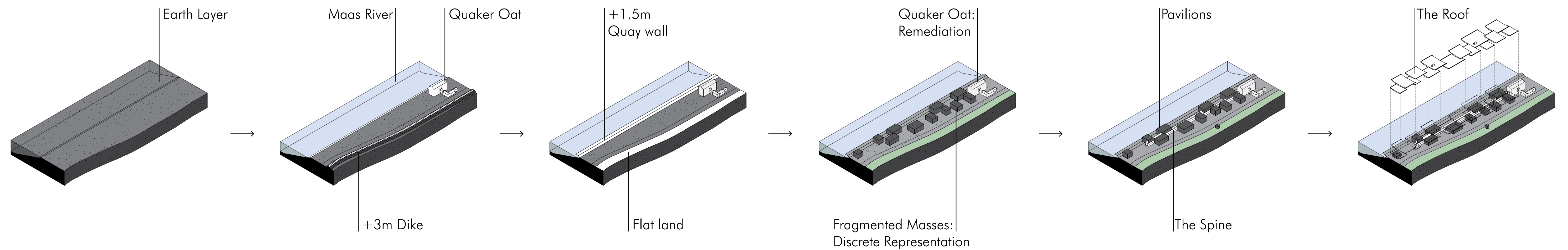


# The New Museum for Contemporary Technology

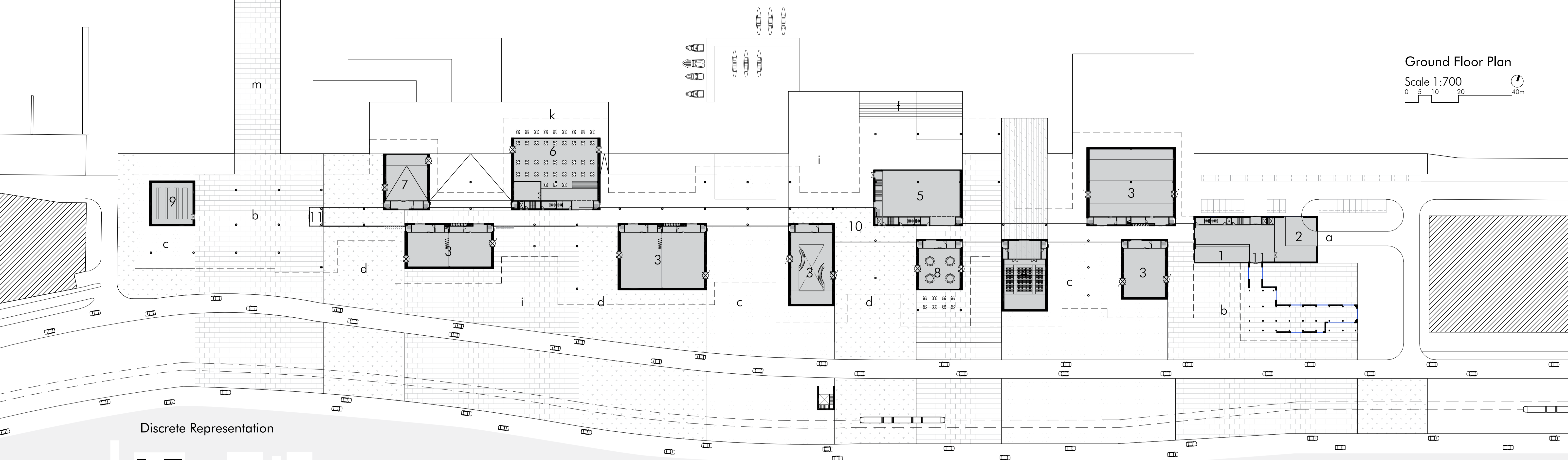
Daul Chung [5010314]

AR3AP100 | MSc3 | Public Building Graduation Studio  
The New Museum | Art + the City Re-Wired | Rotterdam Zuid

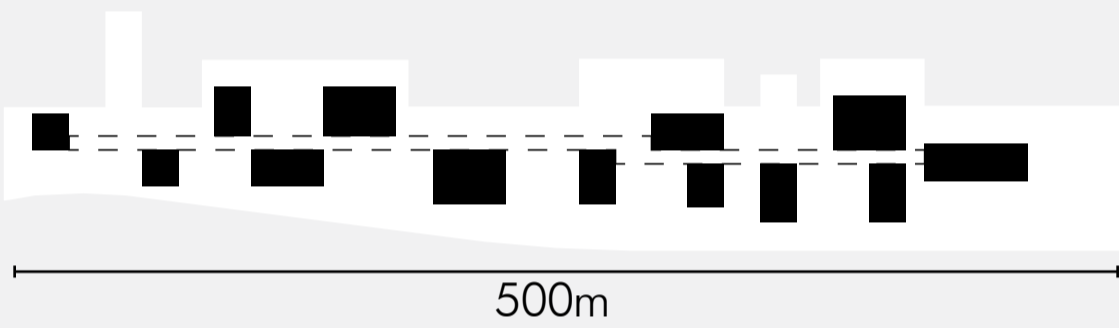
The site is located on the south side of the Maas river, Rotterdam South. Until 1905, the site was a polder. It was muddy, swamp and creeks in the peat landscape. In 1905, the Maas river was constructed as a harbor for barges. Along the quays, silos and warehouses were built. In 1940, at the beginning of the Second World War, Rotterdam was devastated by a German bombing raid. The site location was not directly destroyed, but the whole Rotterdam had to start from scratch of war to become the contemporary city that we know today. However, this image of Rotterdam is limited to Rotterdam North. Rotterdam South is not a separate administrative unit, although there is a national consortium that has received substantial national funding for housing, education, and employment programs. Currently, the port for barges has been underutilised since the port of Rotterdam has historically migrated farther west. But, Maashaven is a central transportation hub that has the potential to be bustling with life. Therefore, the site with the Maas river is ready to transform to the New Museum as a public building with more connections.



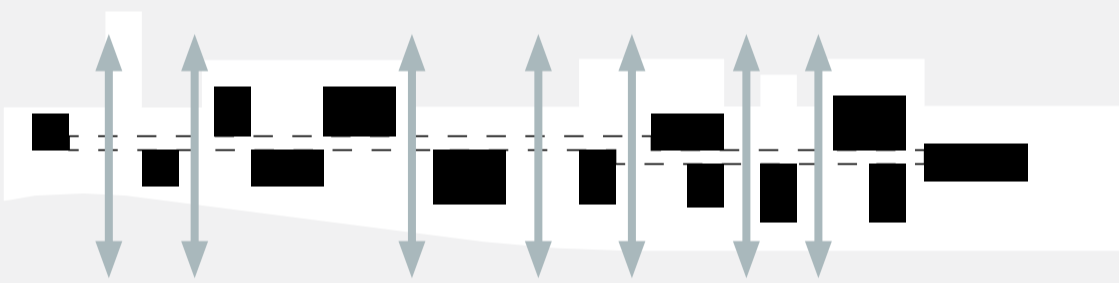




Discrete Representation



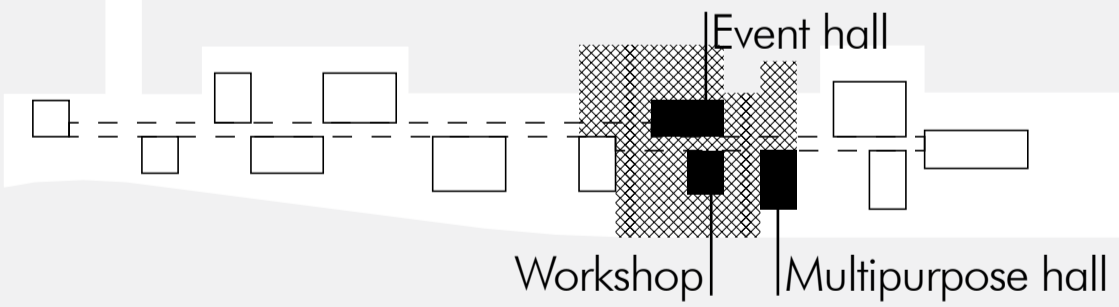
Accessibility & Permeability



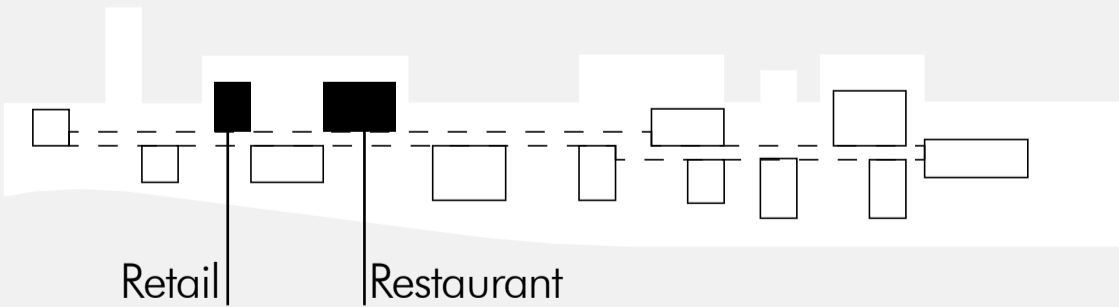
Exhibition Pavilions



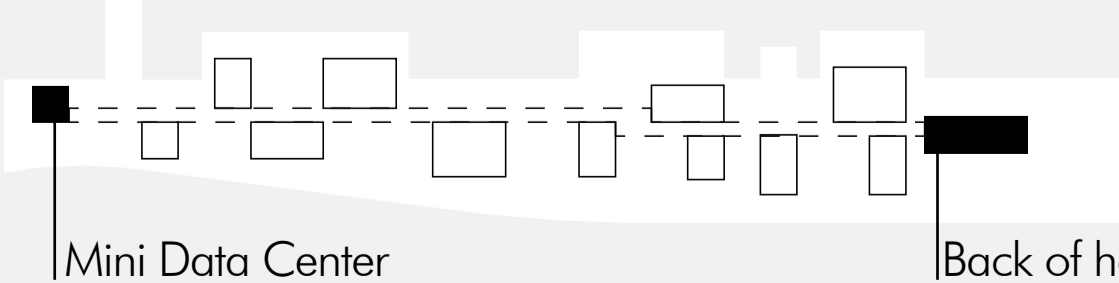
Event Pavilions



Retail Pavilions



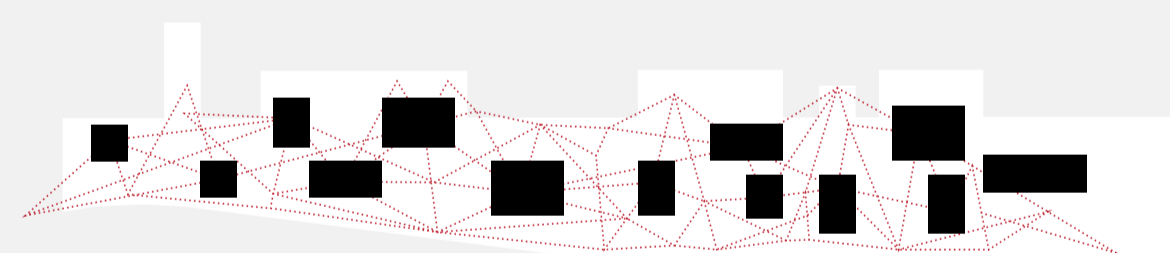
Service Pavilions



Summer



During summer, the spine disappears to provide more outdoor spaces.



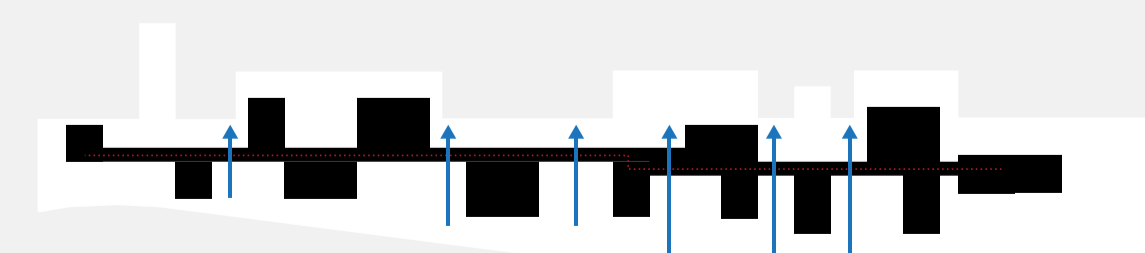
During summer, it is meant to be interactive as much as possible.



Winter



During winter, the spine appears to provide comfortable temperature.



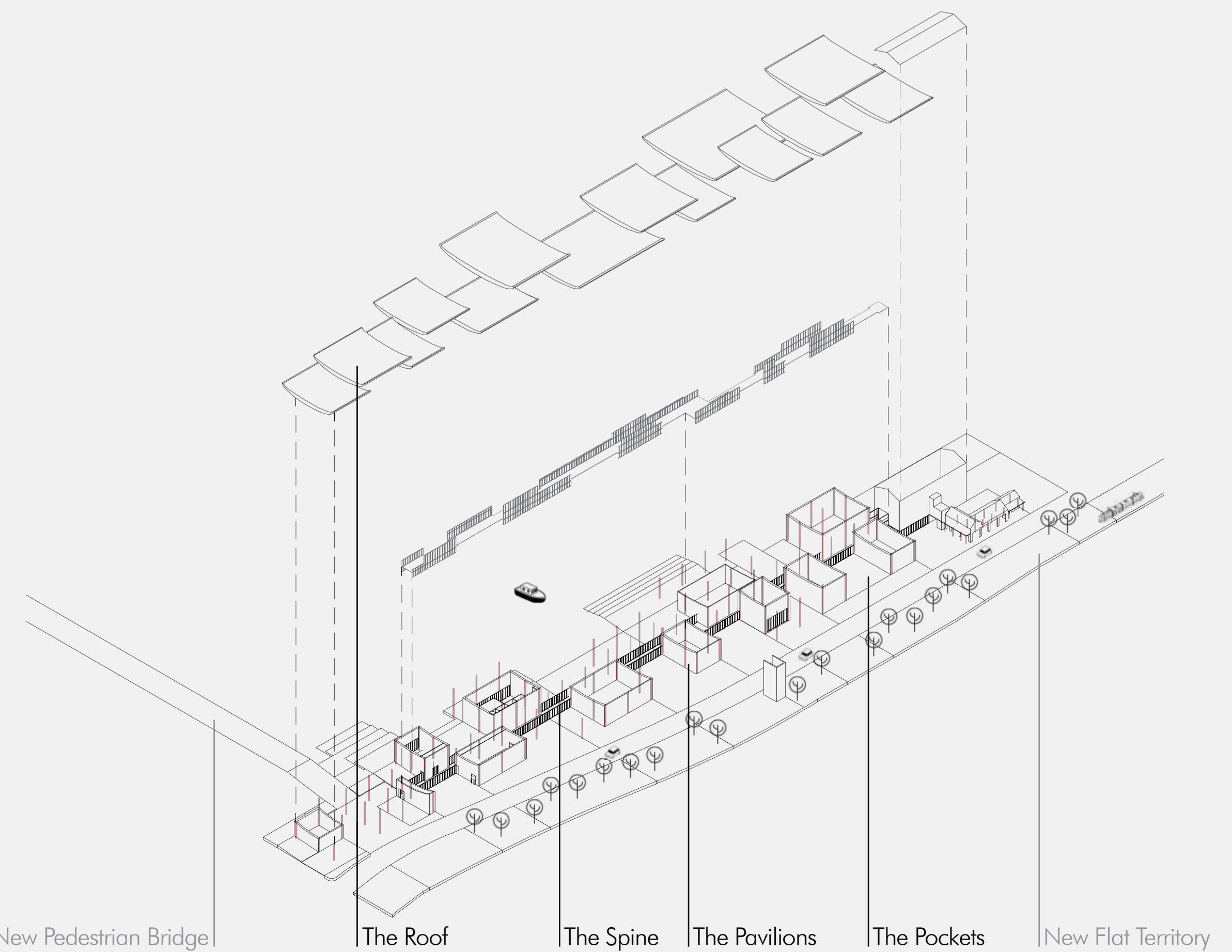
During winter, the main circulation is the spine. However, there are several doors to reach the waterfront.

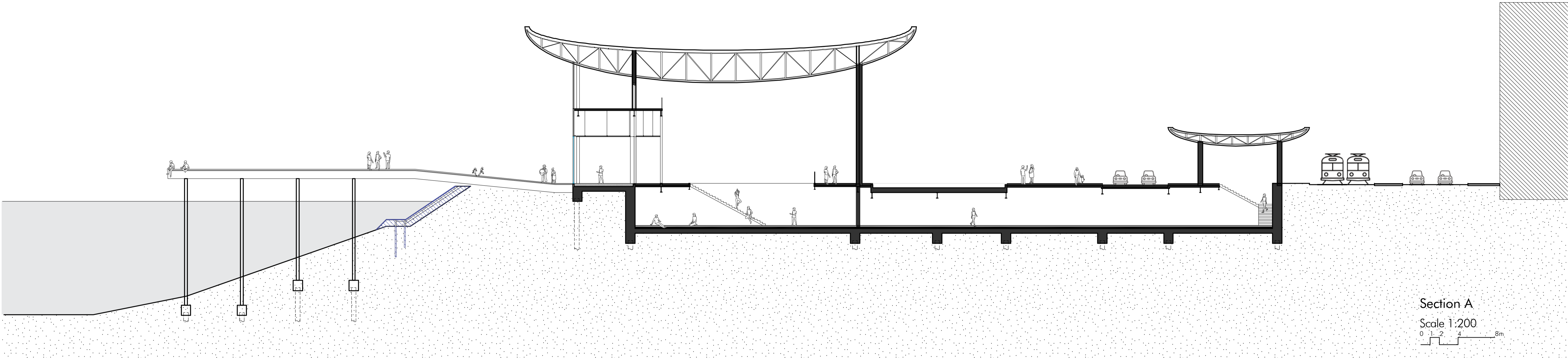
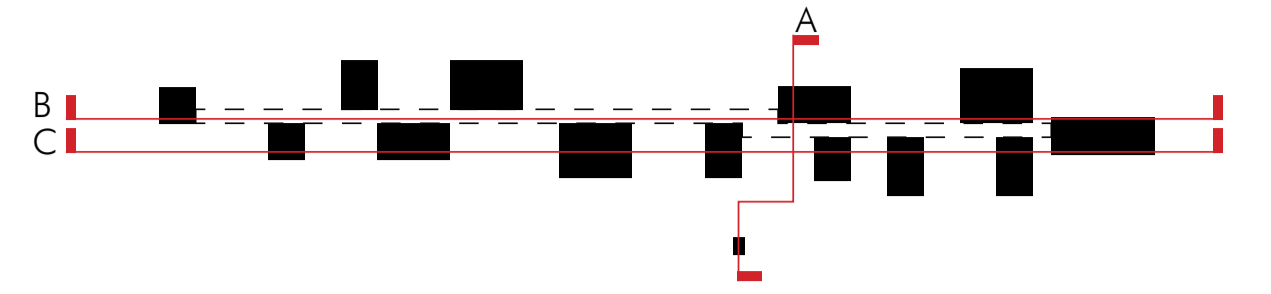
Outdoor

- a. Loading
- b. Welcoming Plaza
- c. Water Garden
- d. Green Garden
- e. River Garden
- f. River Theater
- g. Water Taxi
- i. Floating Exhibiton
- j. Festival Plaza
- k. Restaurent Deck
- l. Meeting Plaza
- m. Pedestrian Bridge

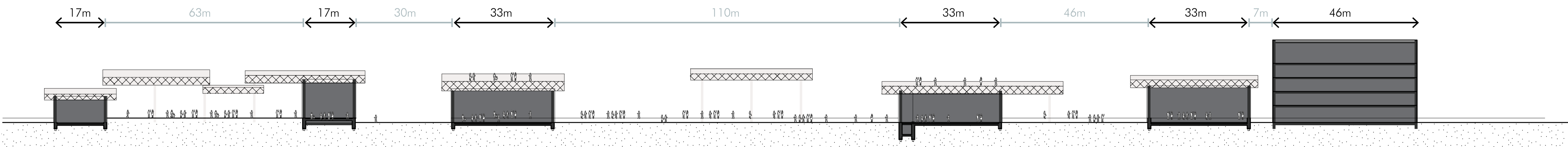
Program

- 1. Visitor Cener
- 2. Loading
- 3. Exhibition
- 4. Multi-purpose
- 5. Event hall
- 6. Restaurant
- 7. Retail
- 8. Workshop
- 9. Mini Data Center
- 10. The Spine
- 11. Entrance



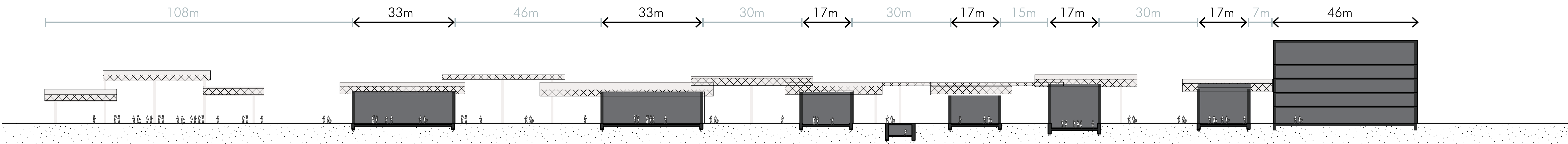


Section A  
Scale 1:200  
0 1 2 4 8m



17m 63m 17m 30m 33m 110m 33m 46m 33m 7m 46m

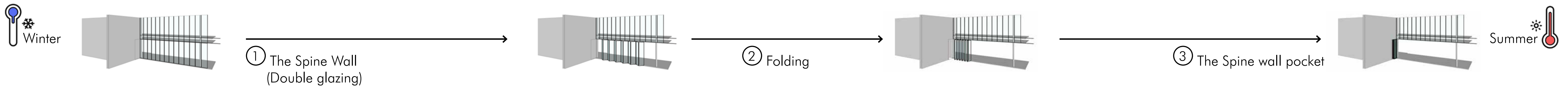
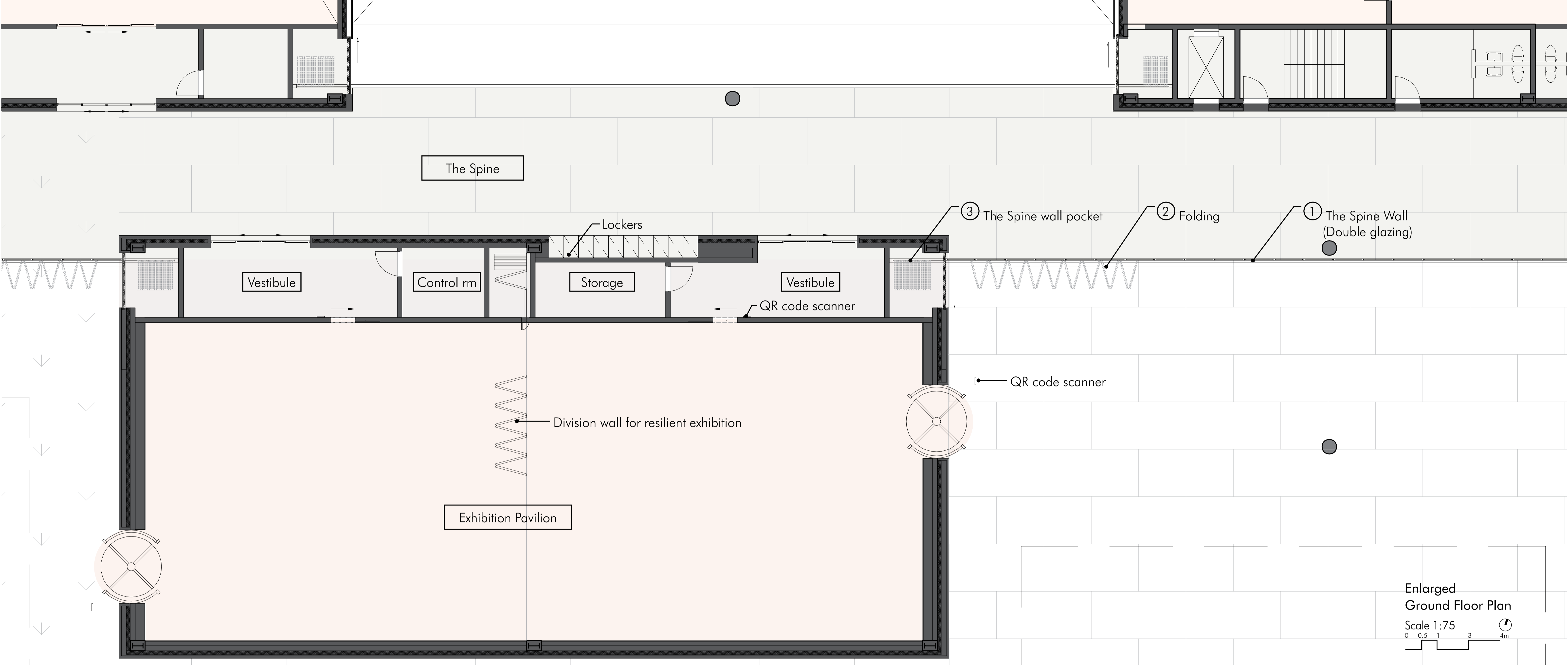
Section B  
Scale 1:600  
0 5 10 20m



108m 33m 46m 33m 30m 17m 30m 17m 15m 17m 30m 17m 7m 46m

Section C  
Scale 1:600  
0 5 10 20m







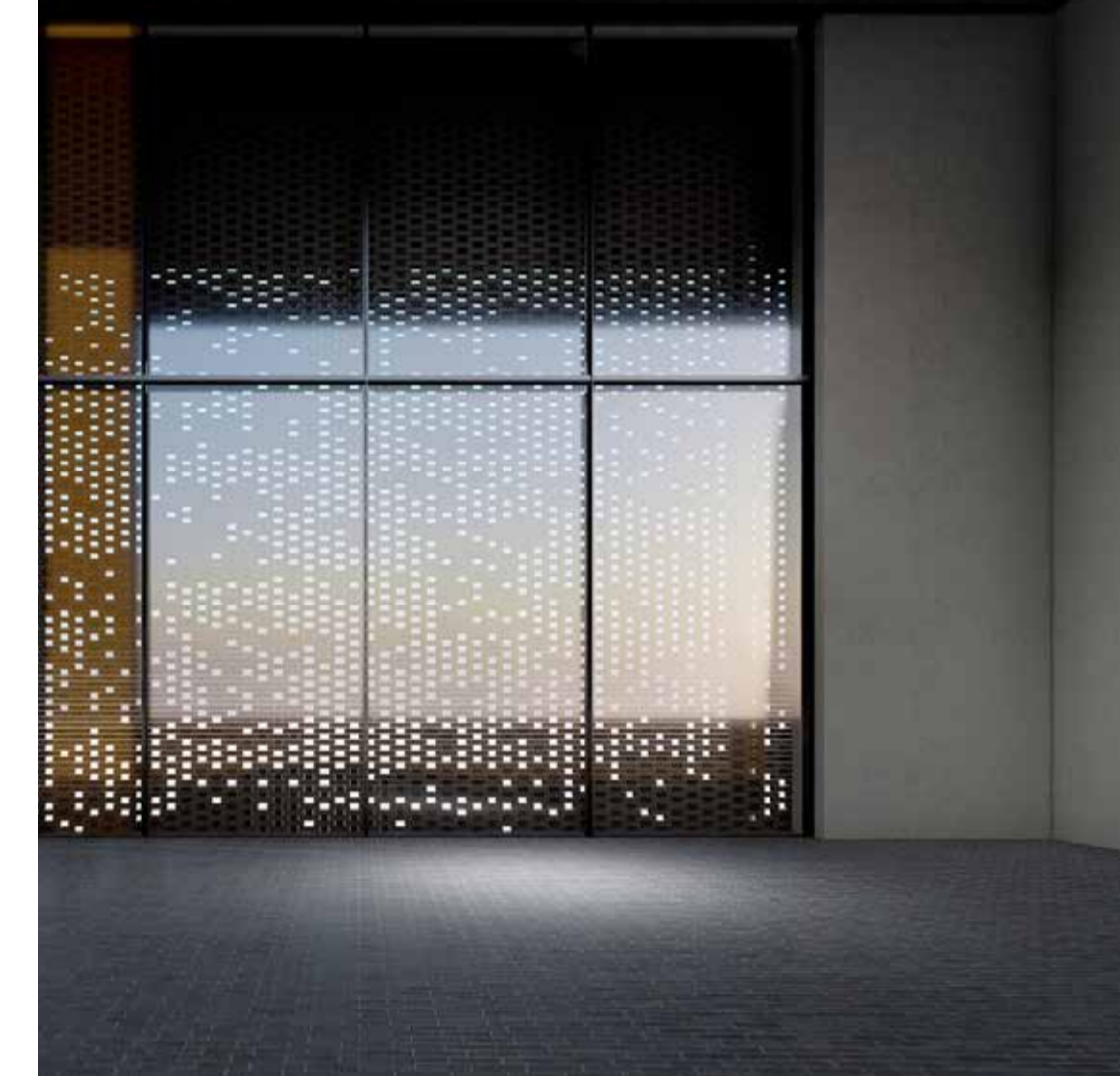
Atmosphere - Exhibition Pavilion



Atmosphere - Restaurant Pavilion



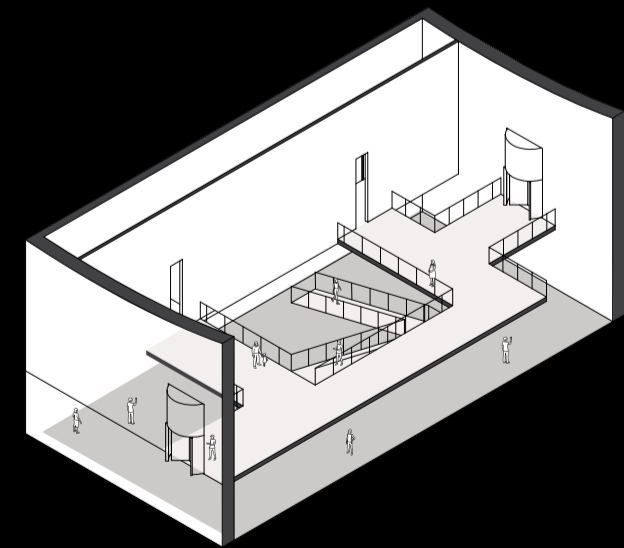
Windows - Option A



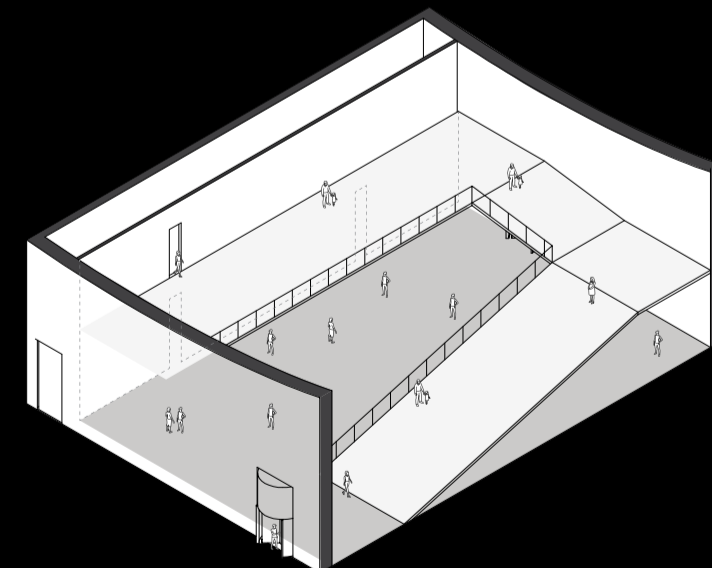
Windows - Option B



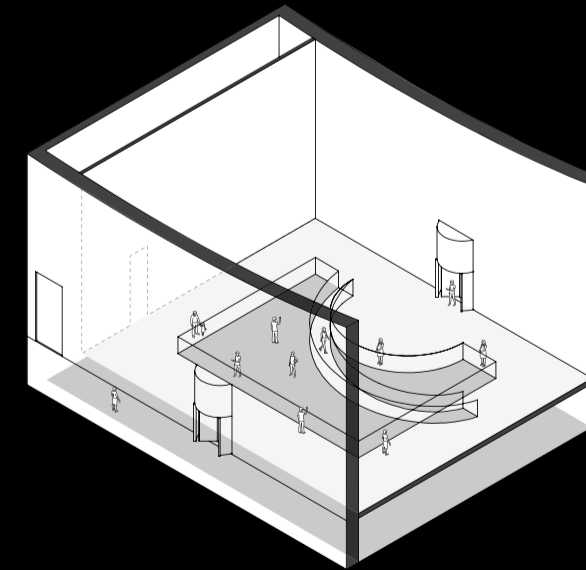
Exhibition Pavilions 'WHITE'



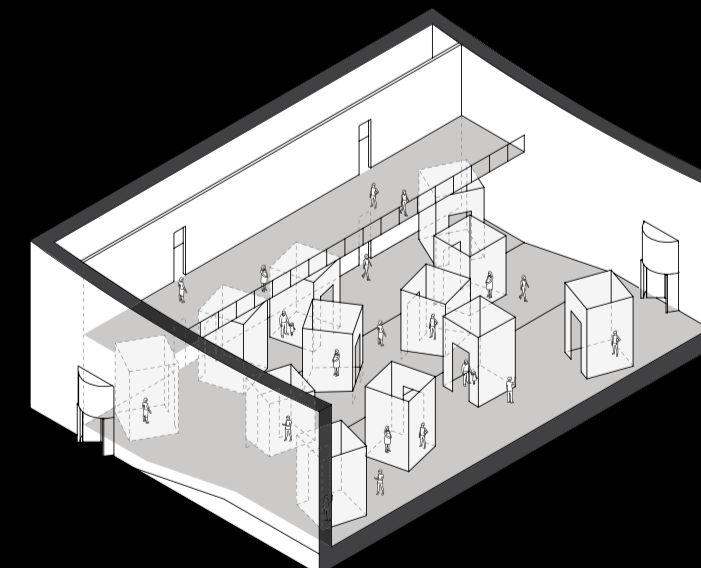
Exhibition Pavilions 'RED'



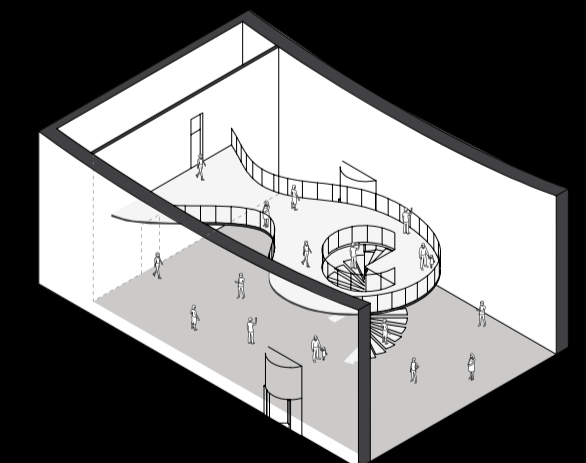
Exhibition Pavilions 'YELLOW'



Exhibition Pavilions 'BLACK'



Exhibition Pavilions 'BLUE'



IN 20 STEPS by DRIFT  
<https://www.studiodrifi.com/work/#/work/in-20-steps/>



Ceramic-porcelain-3d-printer by Olivier van Herpt Logo  
<https://oliviervanherpt.com/blue-and-white-porcelain/>



d'strict. "Starry Beach." 2020, Seoul, KR  
[http://www.district.com/arttechfactory/kr/65-Public\\_Media\\_Art\\_1.html](http://www.district.com/arttechfactory/kr/65-Public_Media_Art_1.html)



Davies, Char. "Osmose." 1995.  
Char Davies Immersant. <http://www.immersence.com>



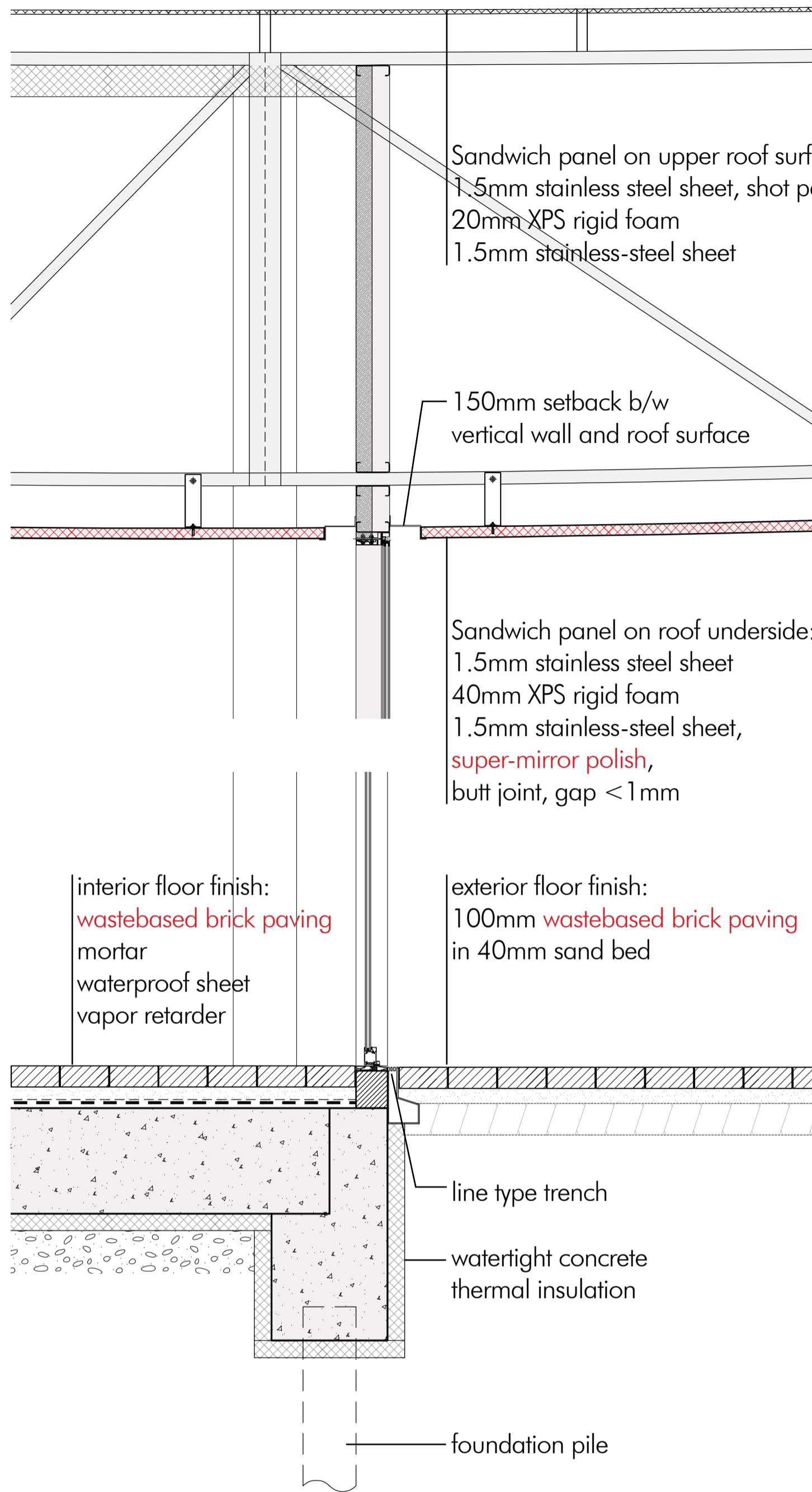
Shaw, Jeffrey. "The Legible City." 1989.  
Jeffrey Shaw Compendium.  
<https://www.jeffreyshawcompendium.com/portfolio/legiblecity/>



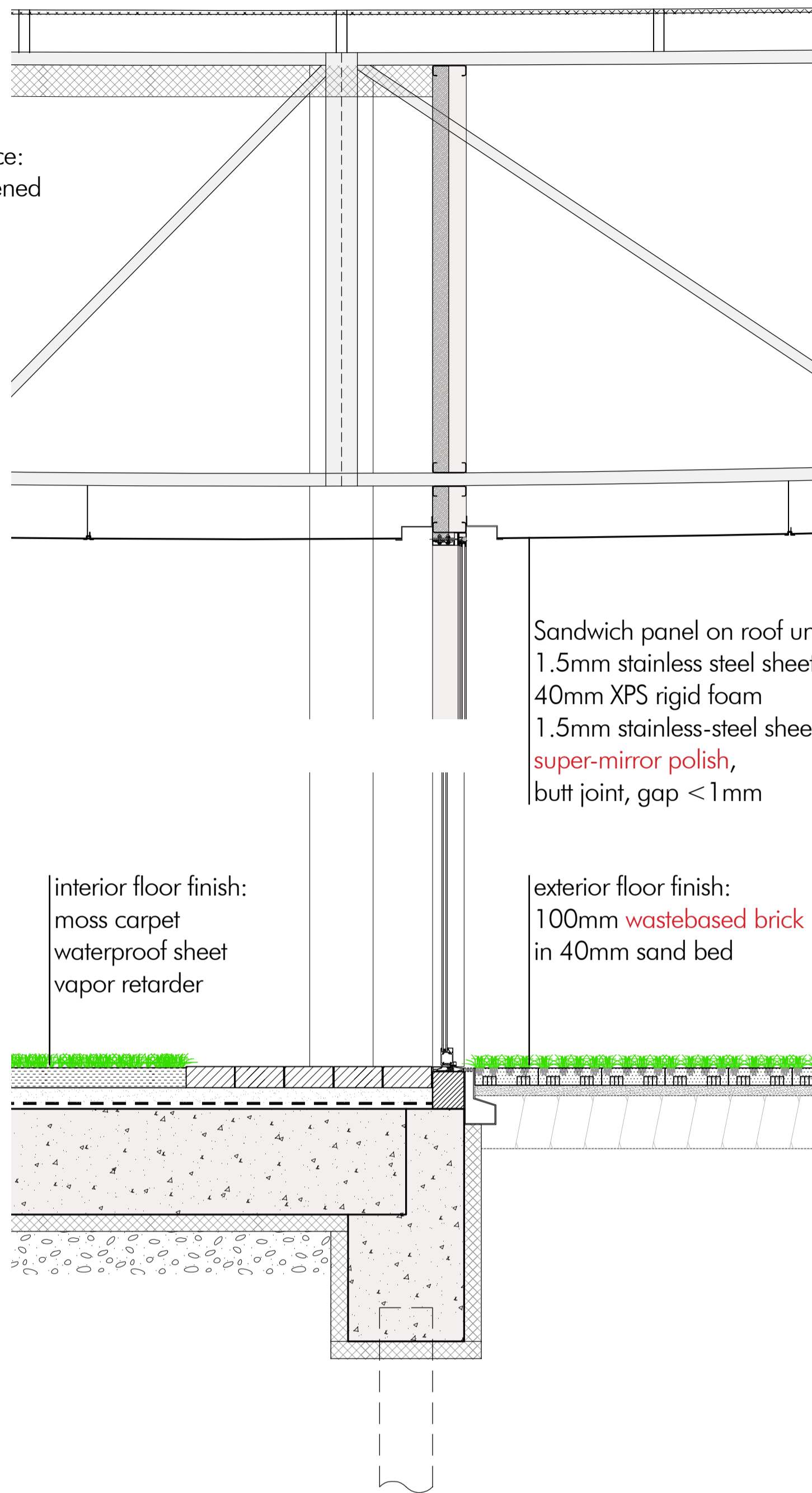
RECENT OUIJA by ED ATKINS  
<https://www.stedelijk.nl/en/exhibitions/70432>



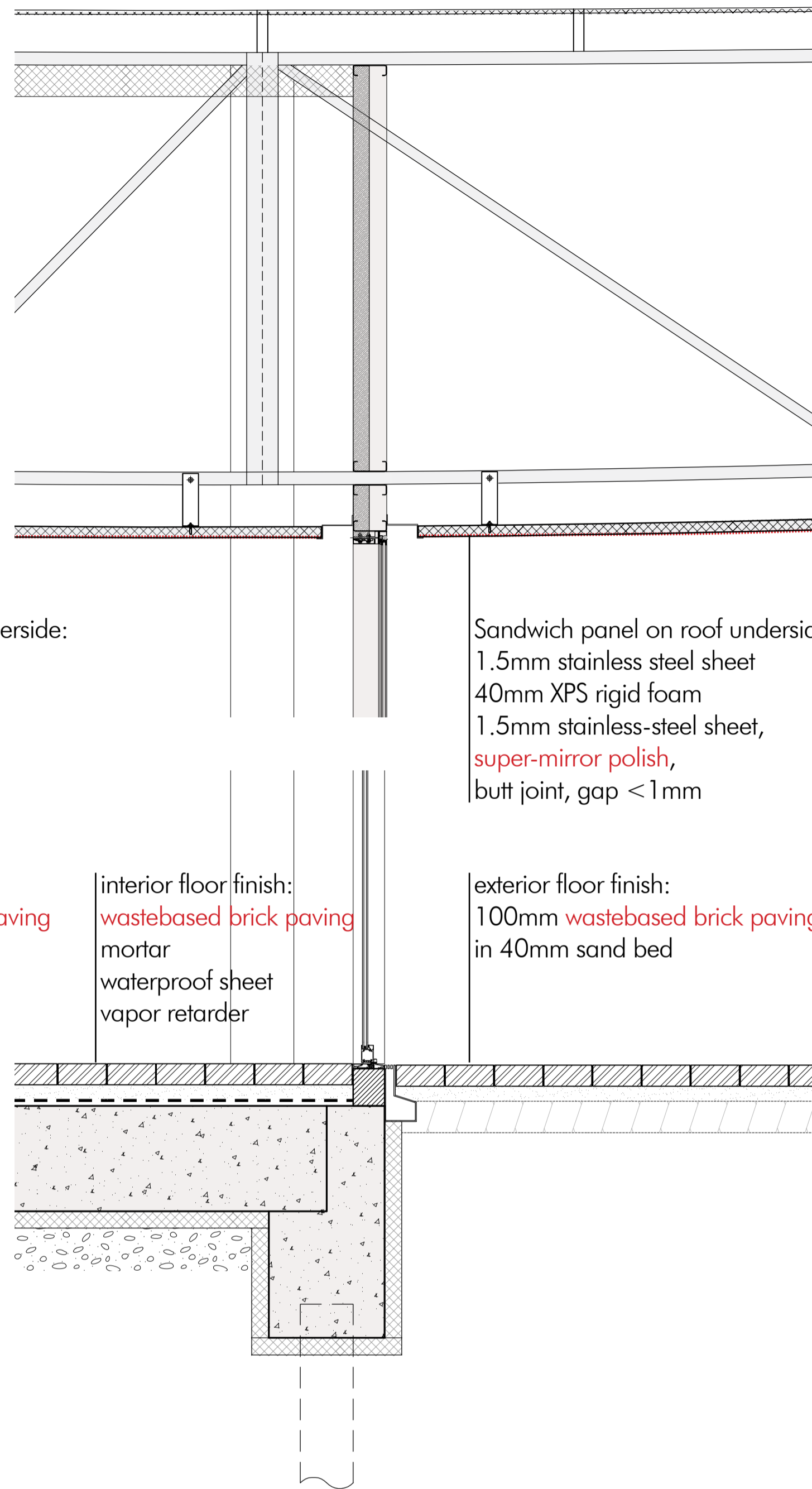
Type A: Mirror Stainless Steel & Pavement



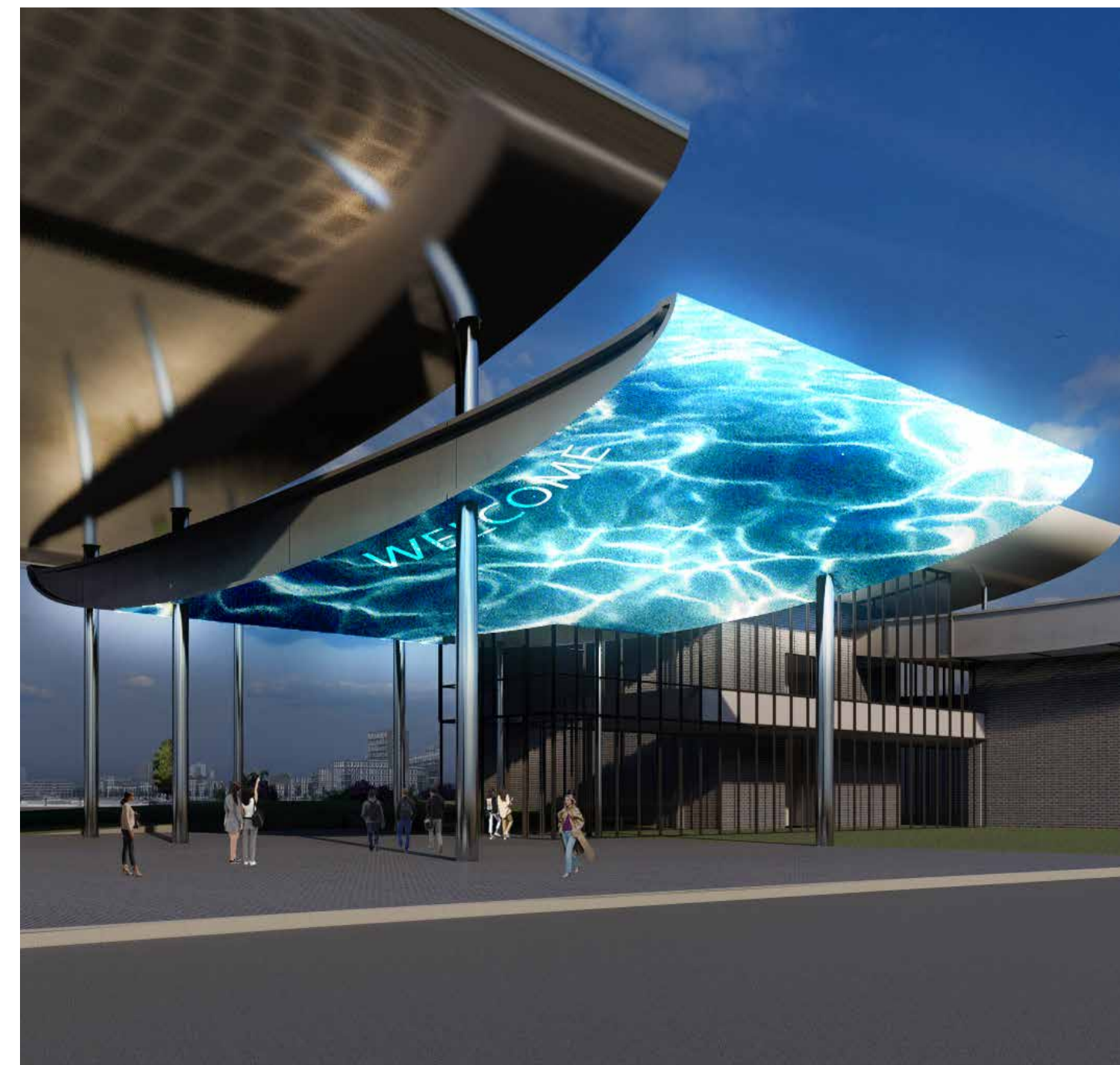
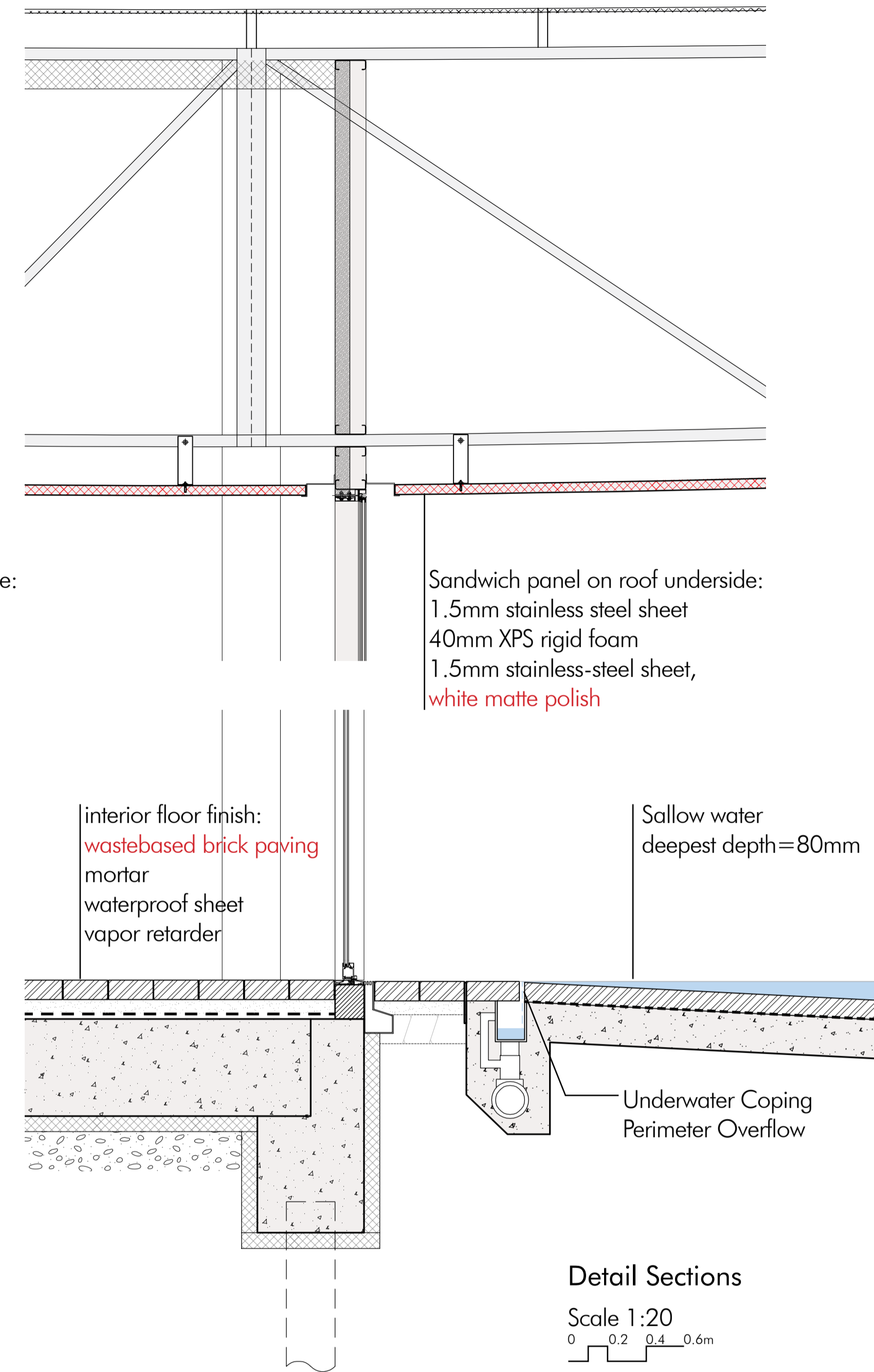
Type B: Expanded Metal Panel & Green



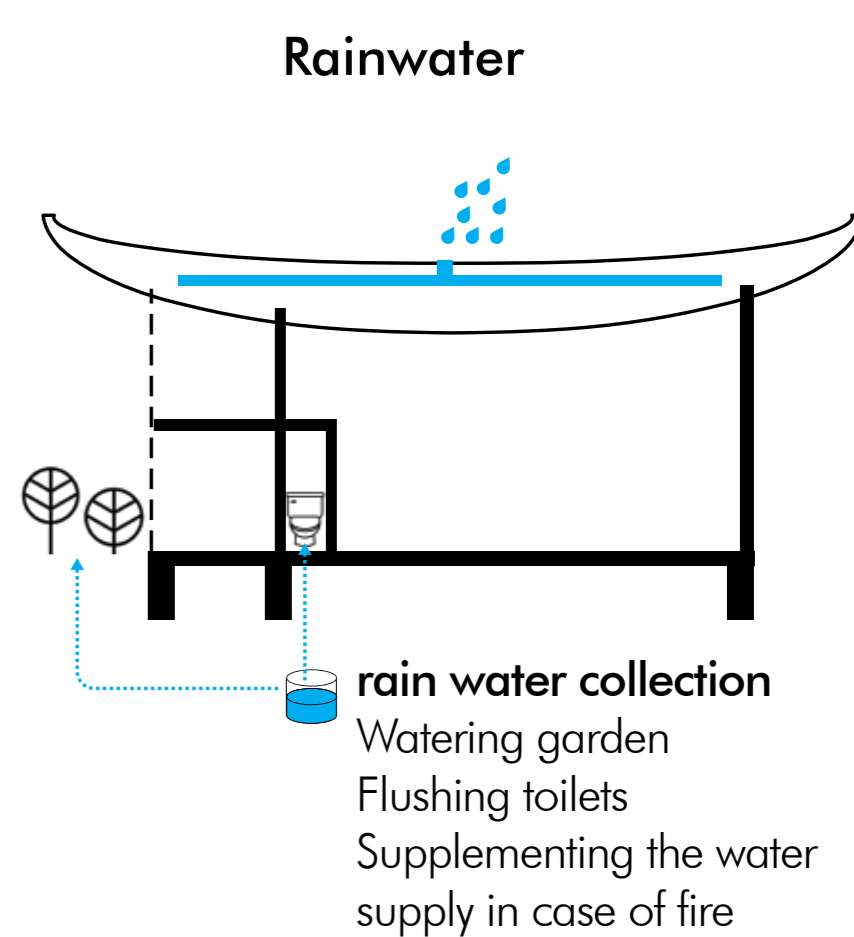
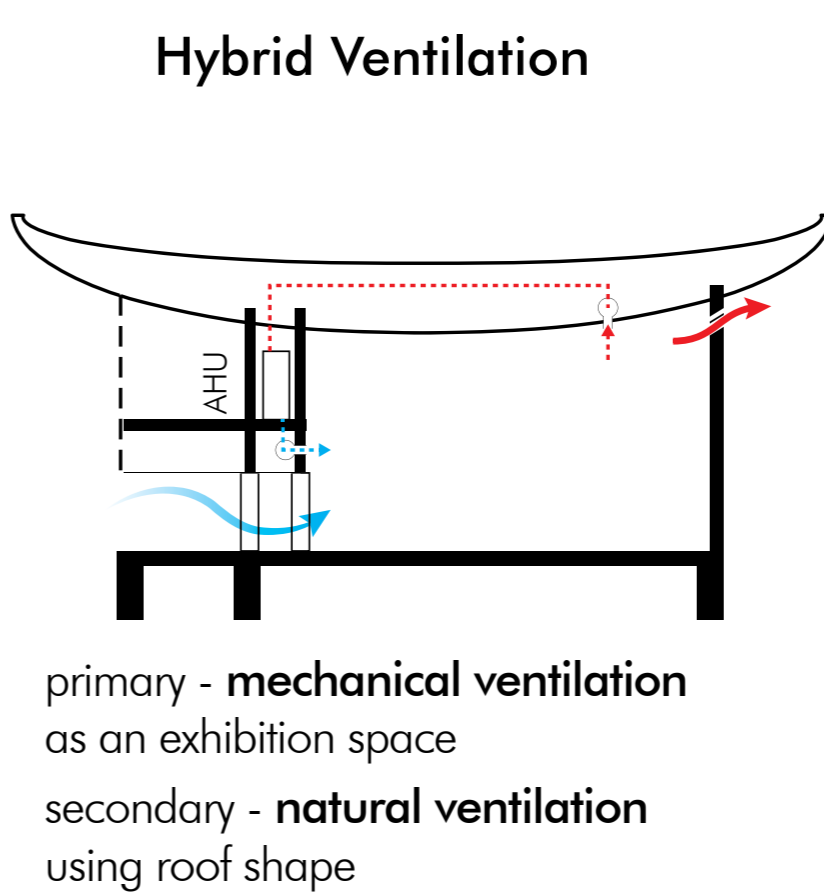
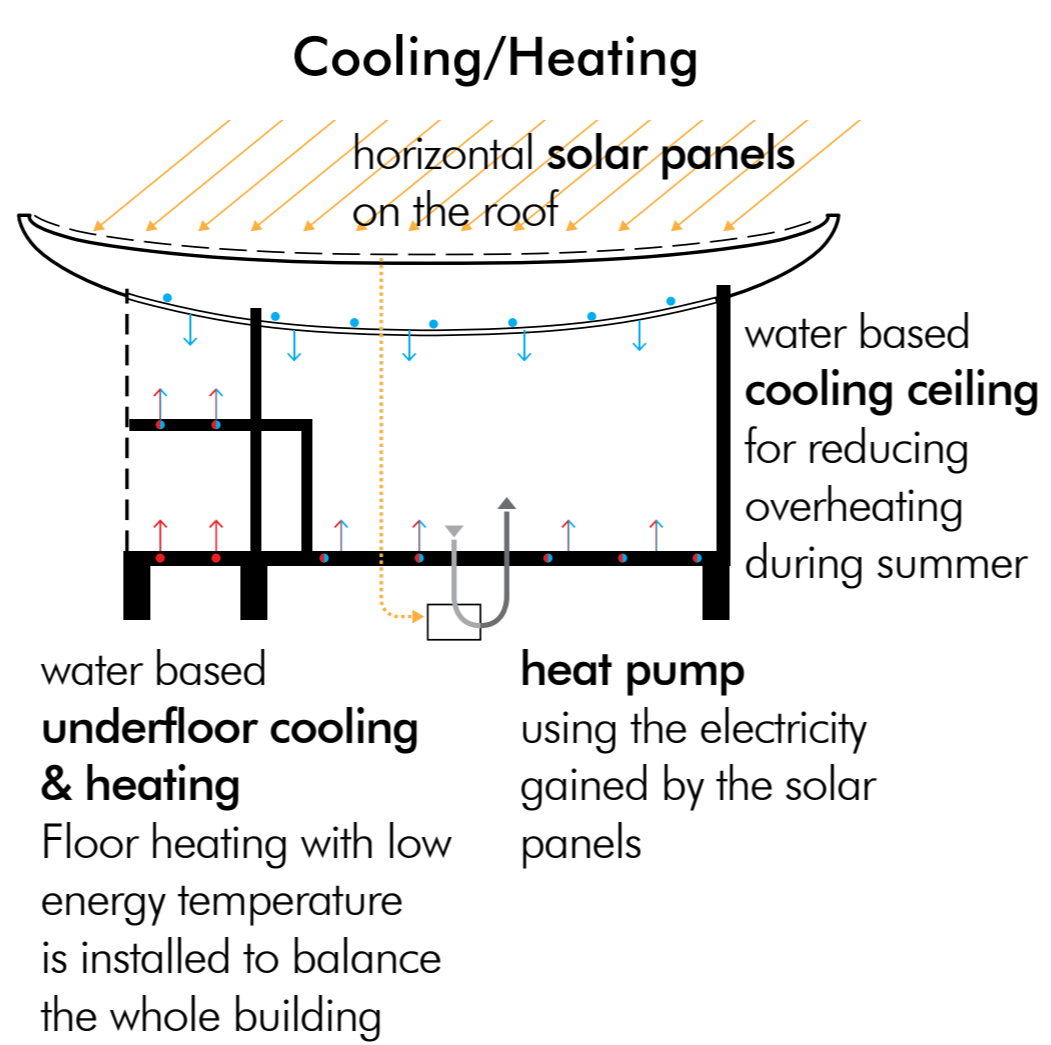
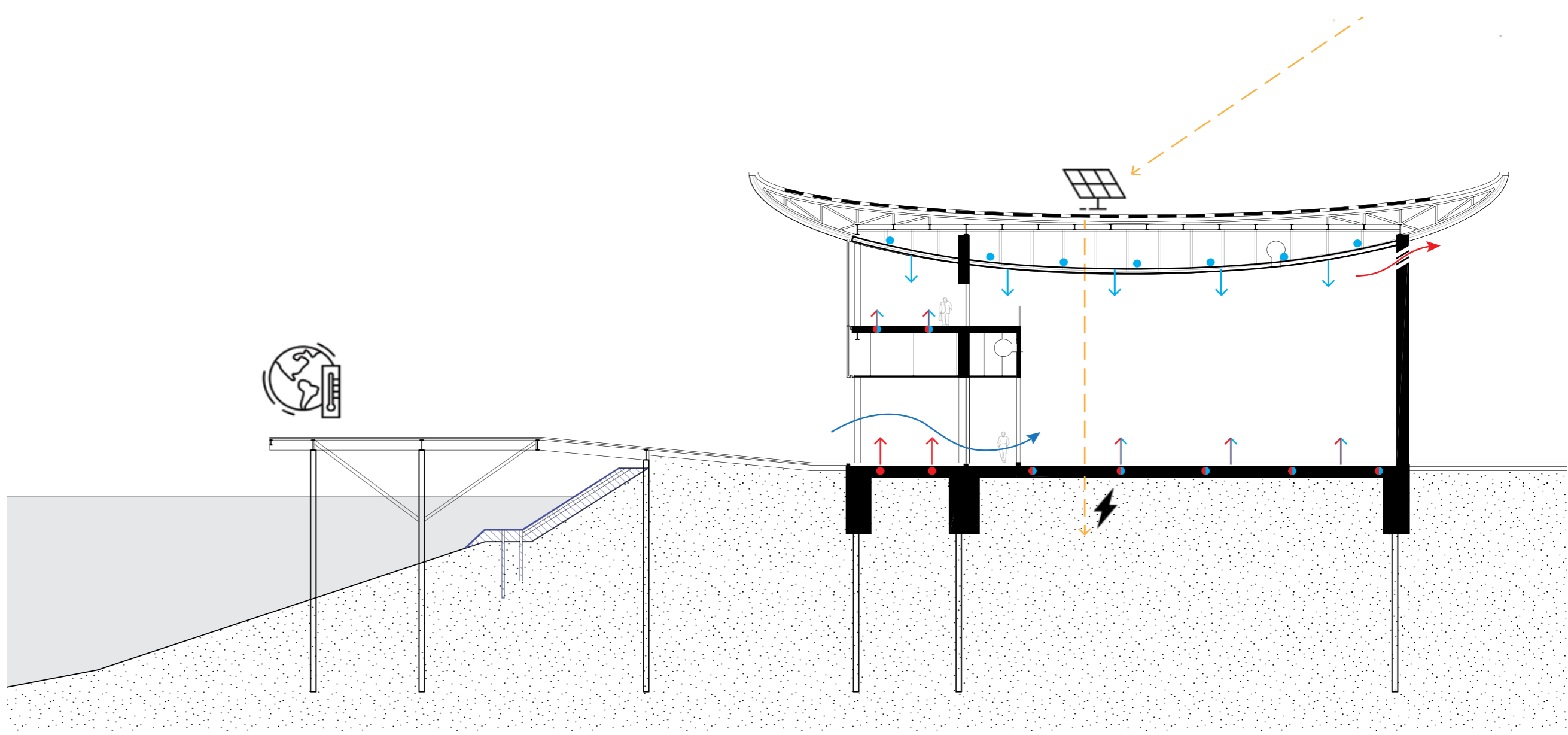
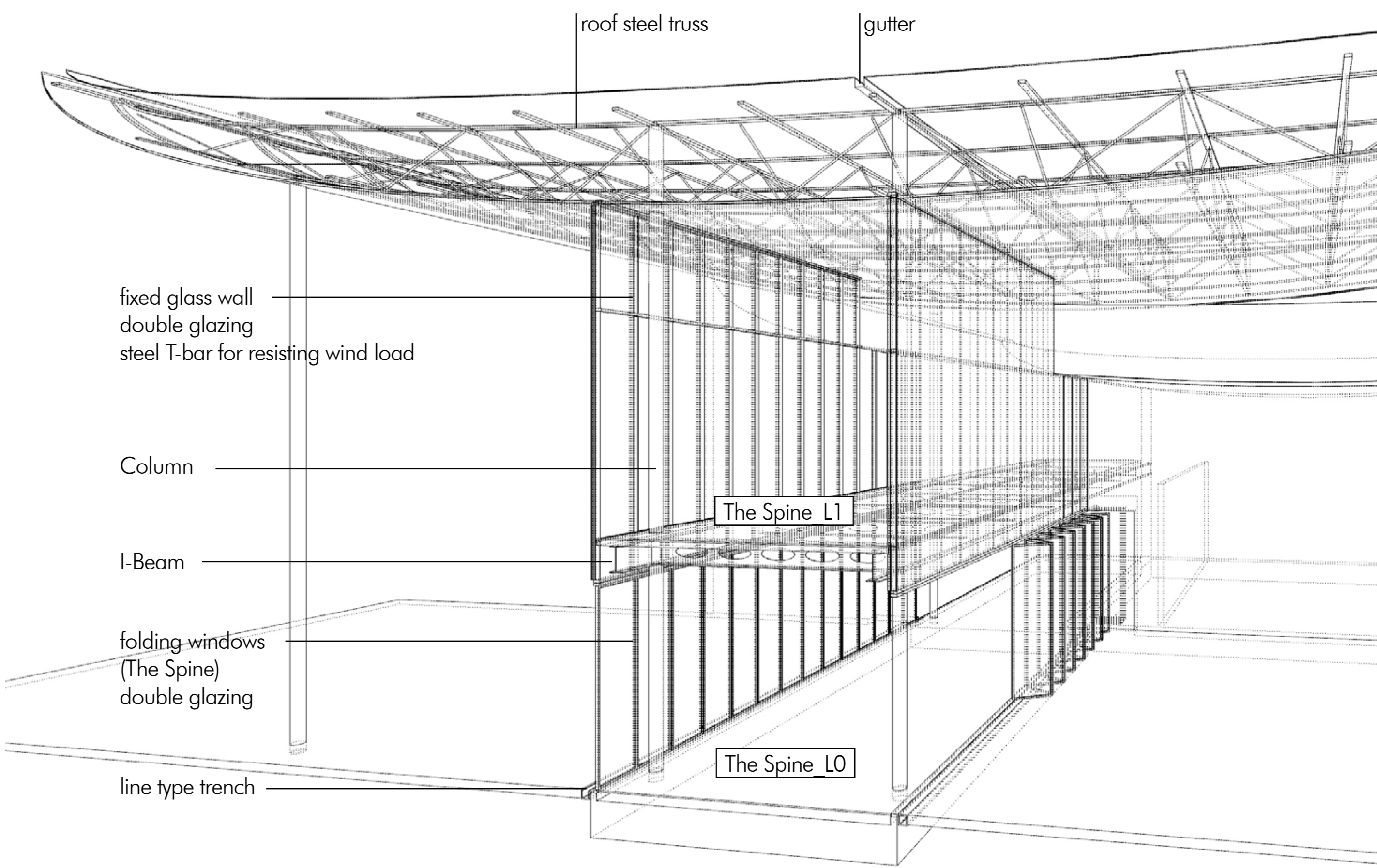
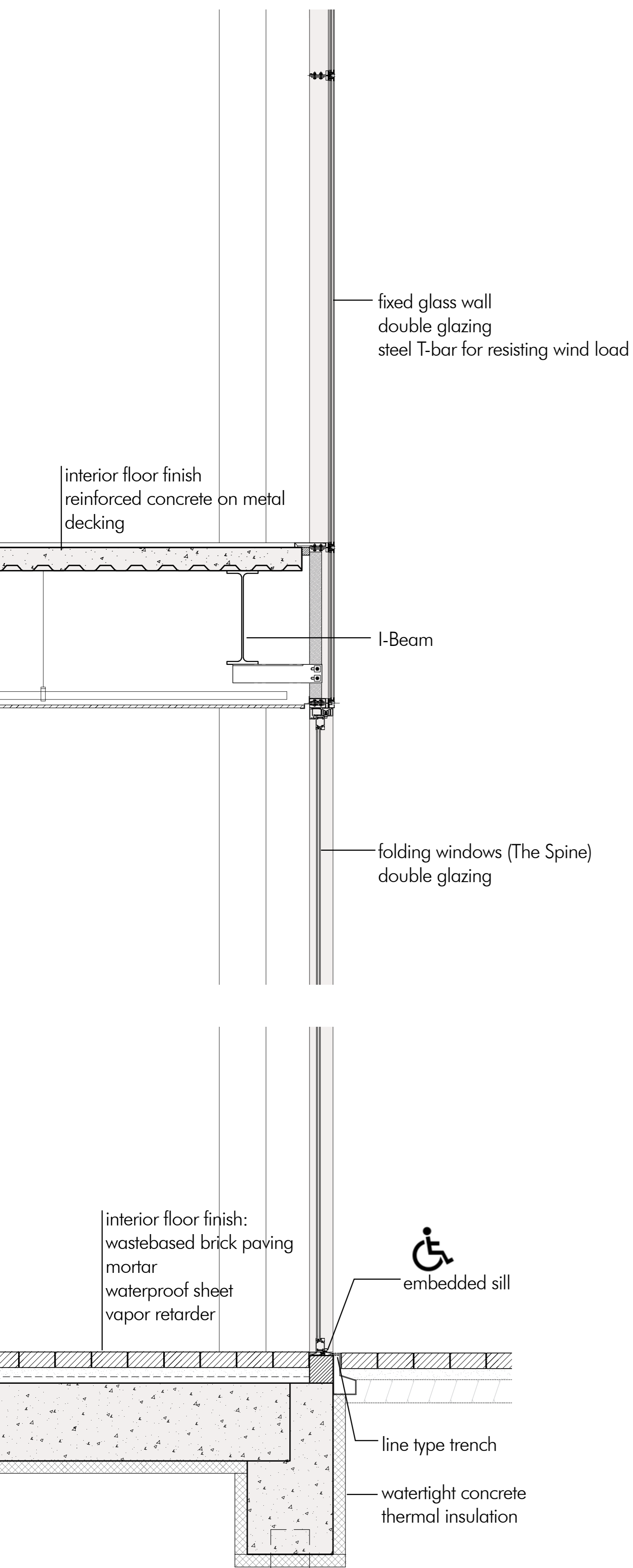
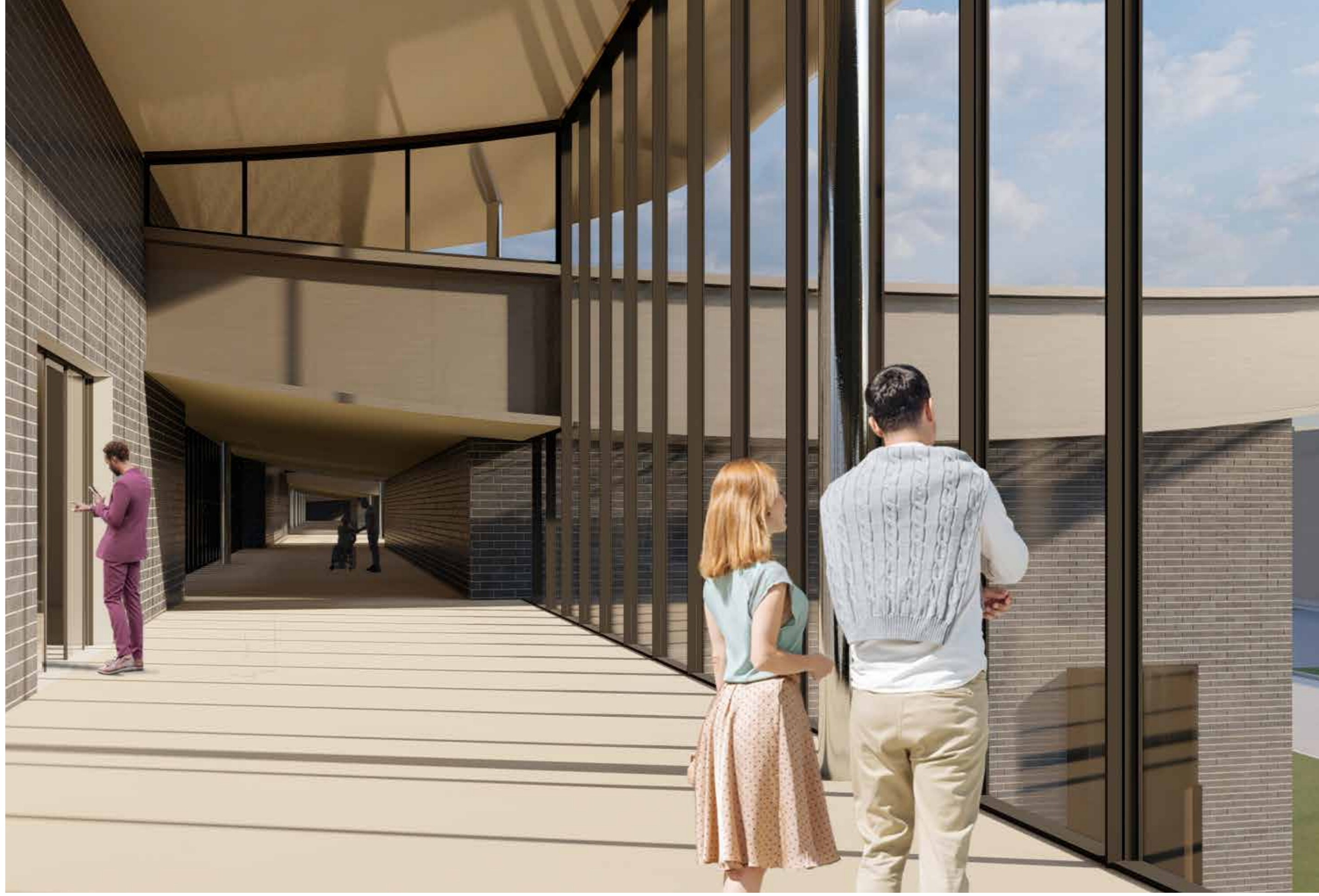
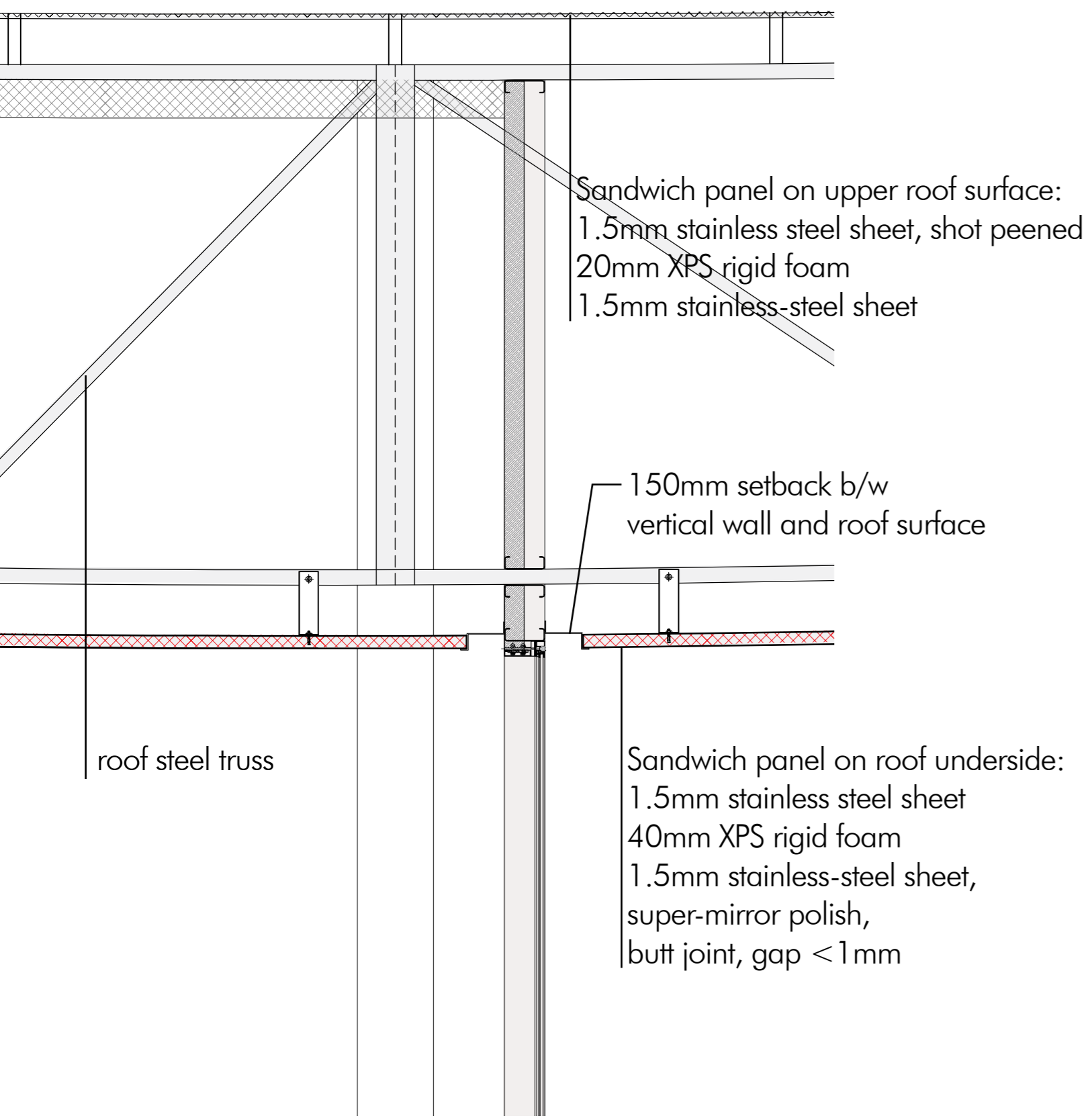
Type C: Media Facade (ceiling) & Entrance



Type D: White Matte Stainless Steel & Water Pond







Detail Section  
Scale 1:20  
0 0.2 0.4 0.6m