

# LIVING AND WORKING IN ANDERLECHT

## TUTORS:

Ir. drs. Eireen Schreurs  
Ir. Els Van Meerbeek  
Dr. Jos Lafeber

04.12.2020

Riccardo Garrone

- 1. Research: The Rooms of Anderlecht**
- 2. Masterplan: Keep Rotor on Site**
- 3. Design: Living and Working**



## Research: The Rooms of Anderlecht







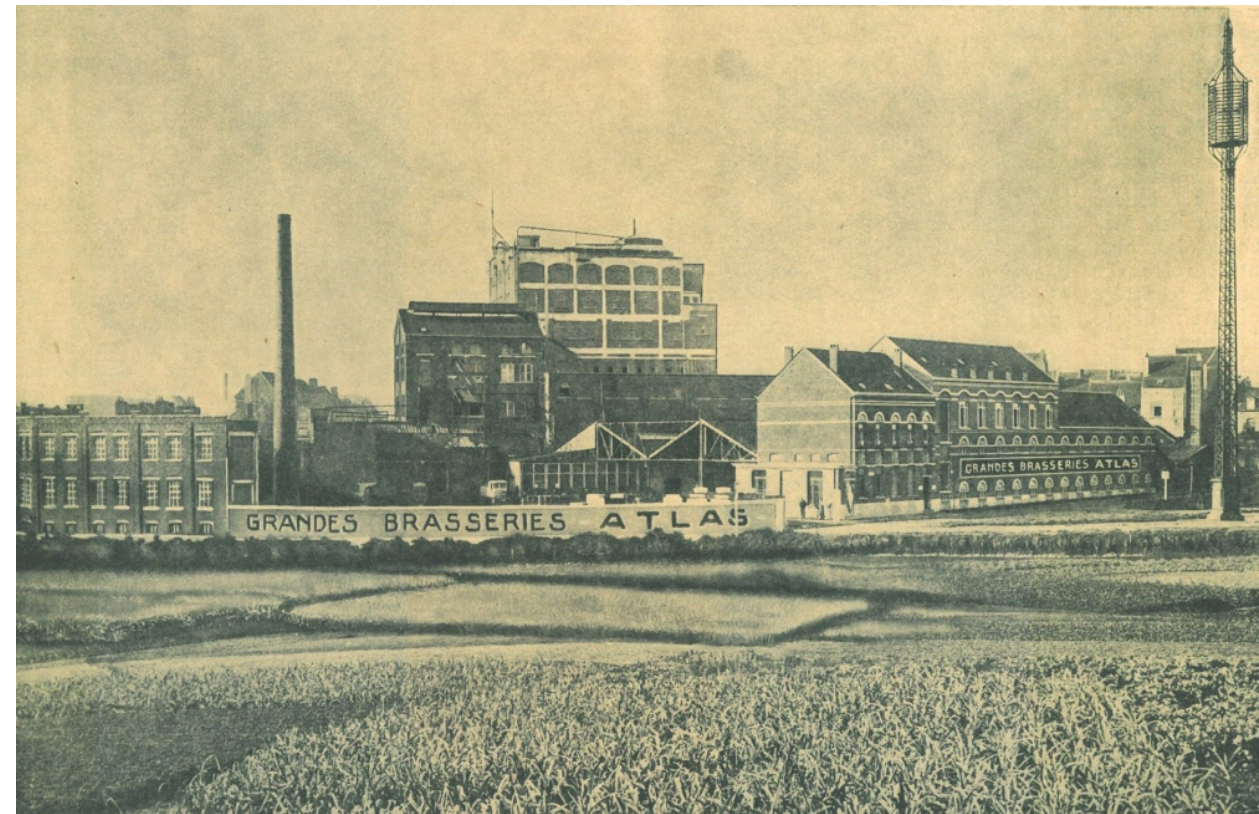






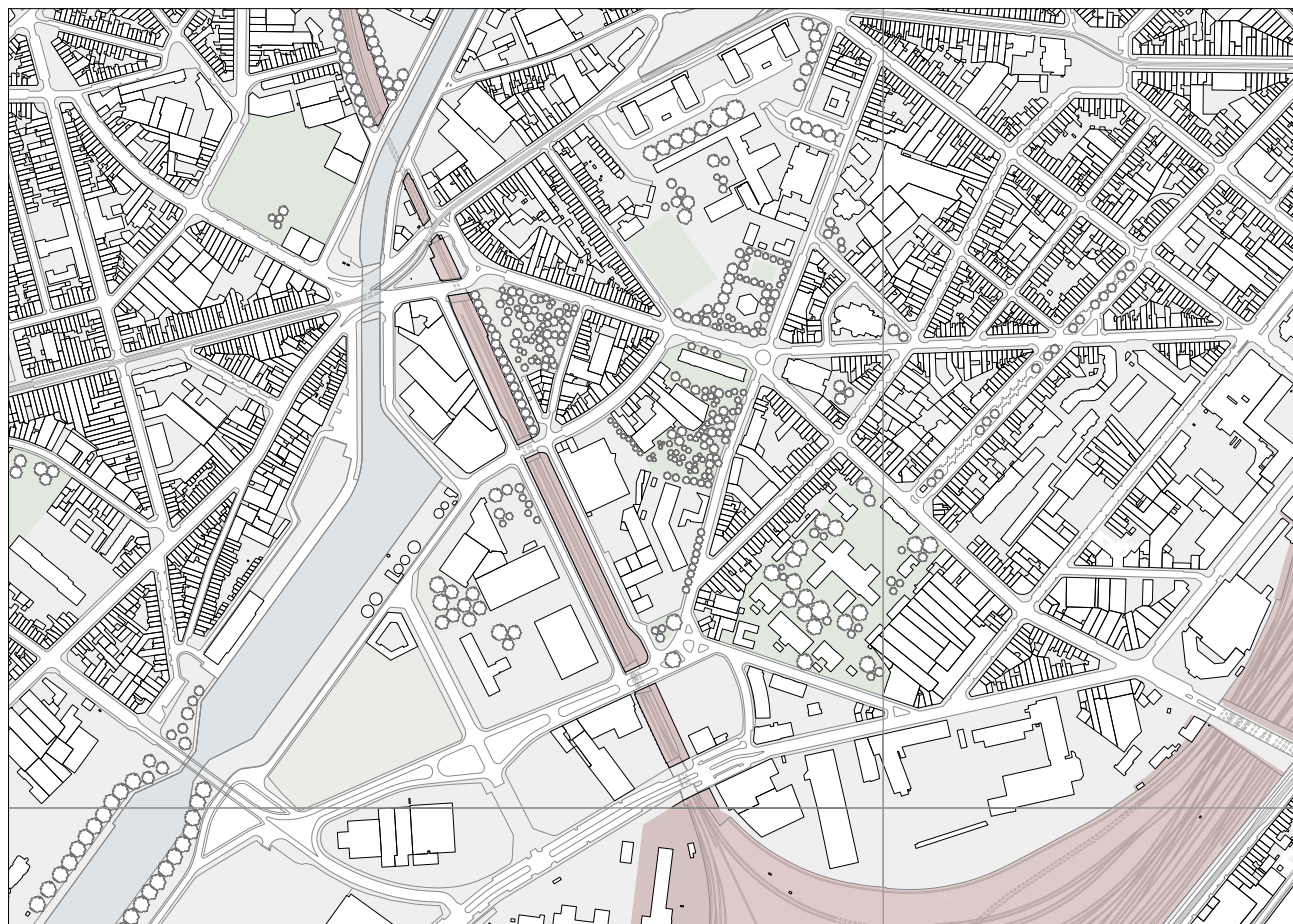
Site location

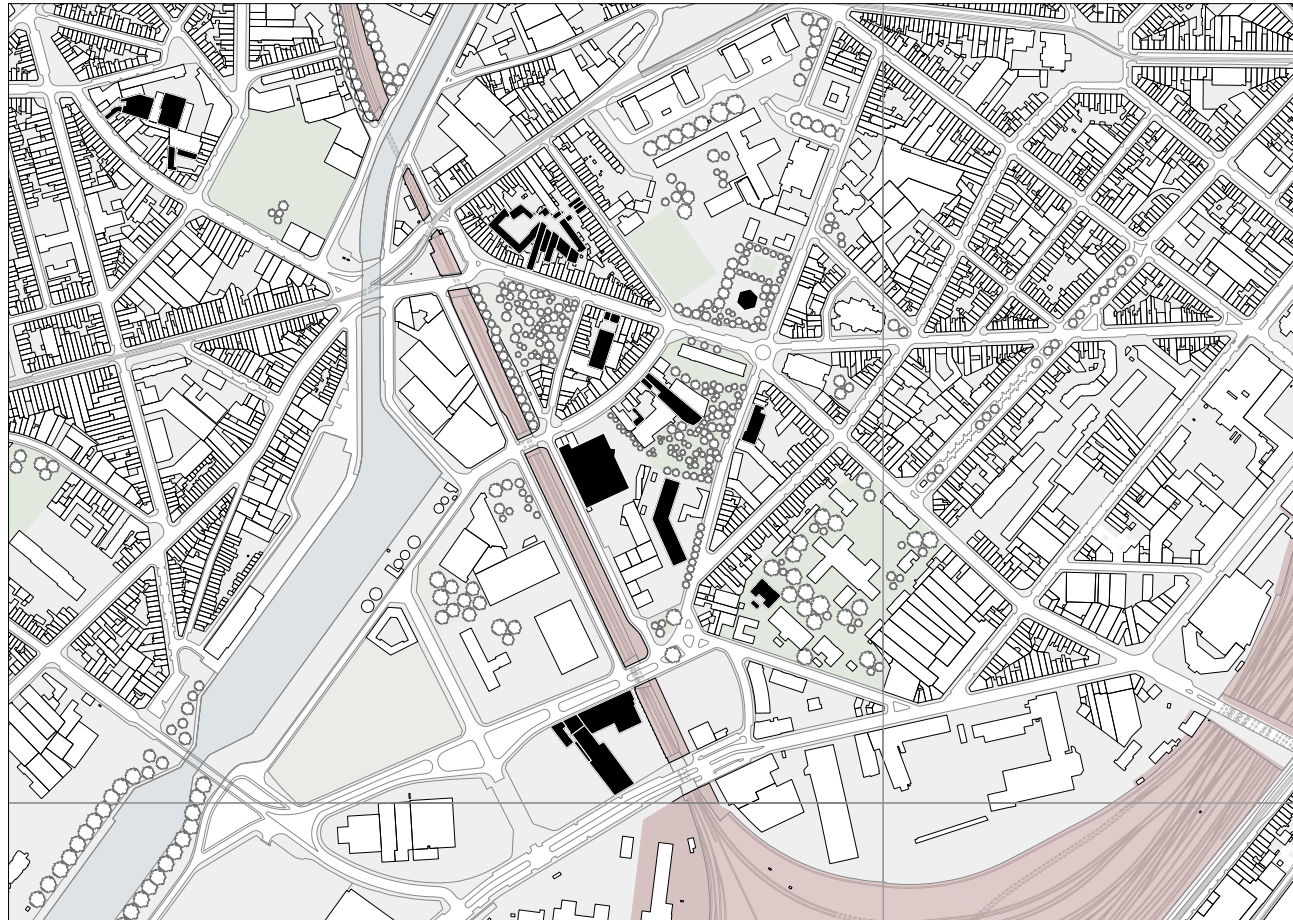




Former Brasseries Atlas







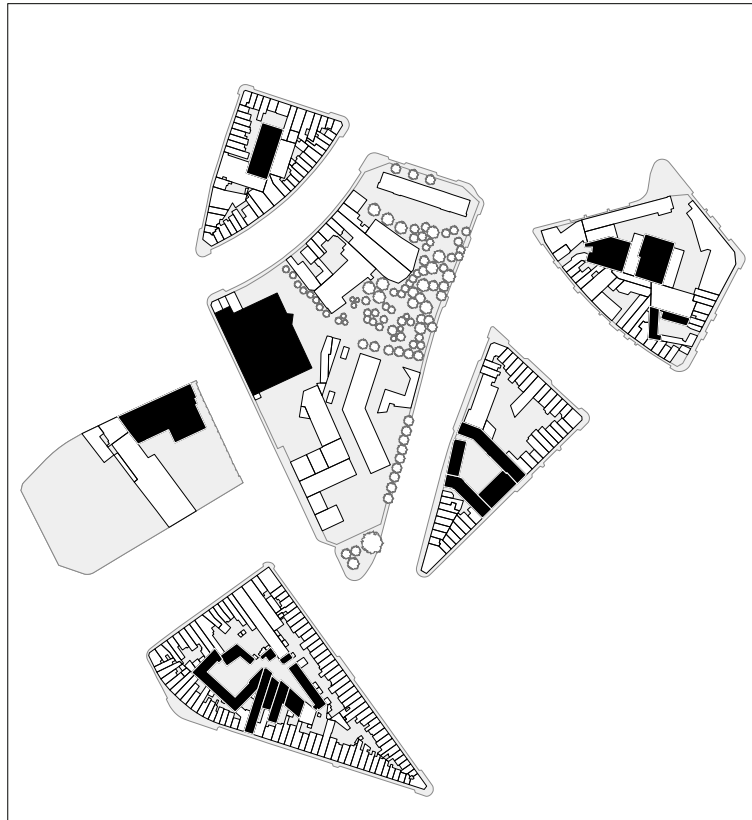
Field research





The Rooms of Anderlecht





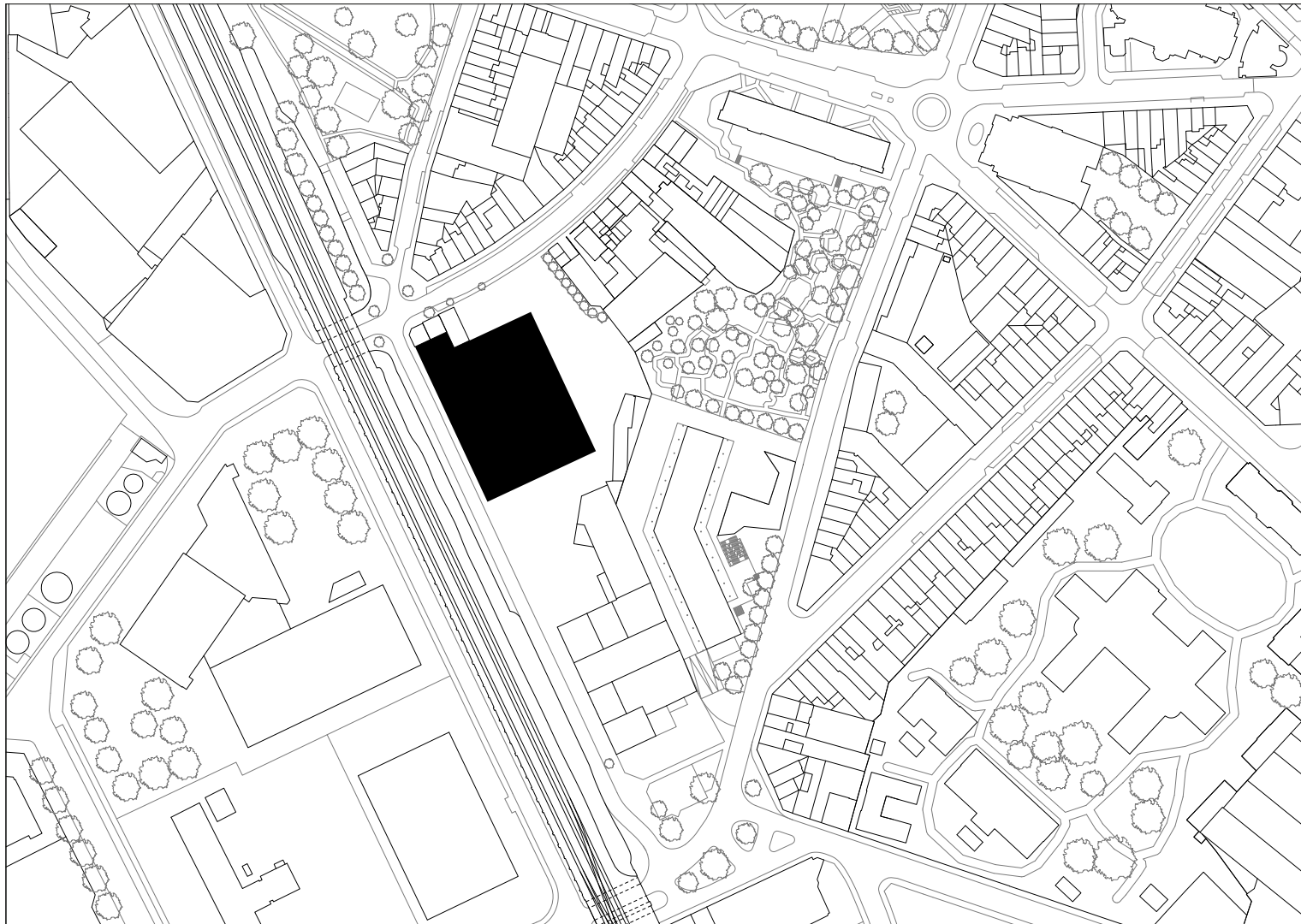
Archipelago of appropriation



Nothing disappears completely, (...)

In space, what came earlier continues to underpin what follows.(...)  
The task of architectonics is to describe, analyse and explain this persistence, which is often evoked in the metaphorical shorthand of strata, periods, sedimentary layers, and so on. - Henri Lefebvre, *The Production of Space*

## **2. Masterplan: Keep Rotor on Site**



“Rotor Building”



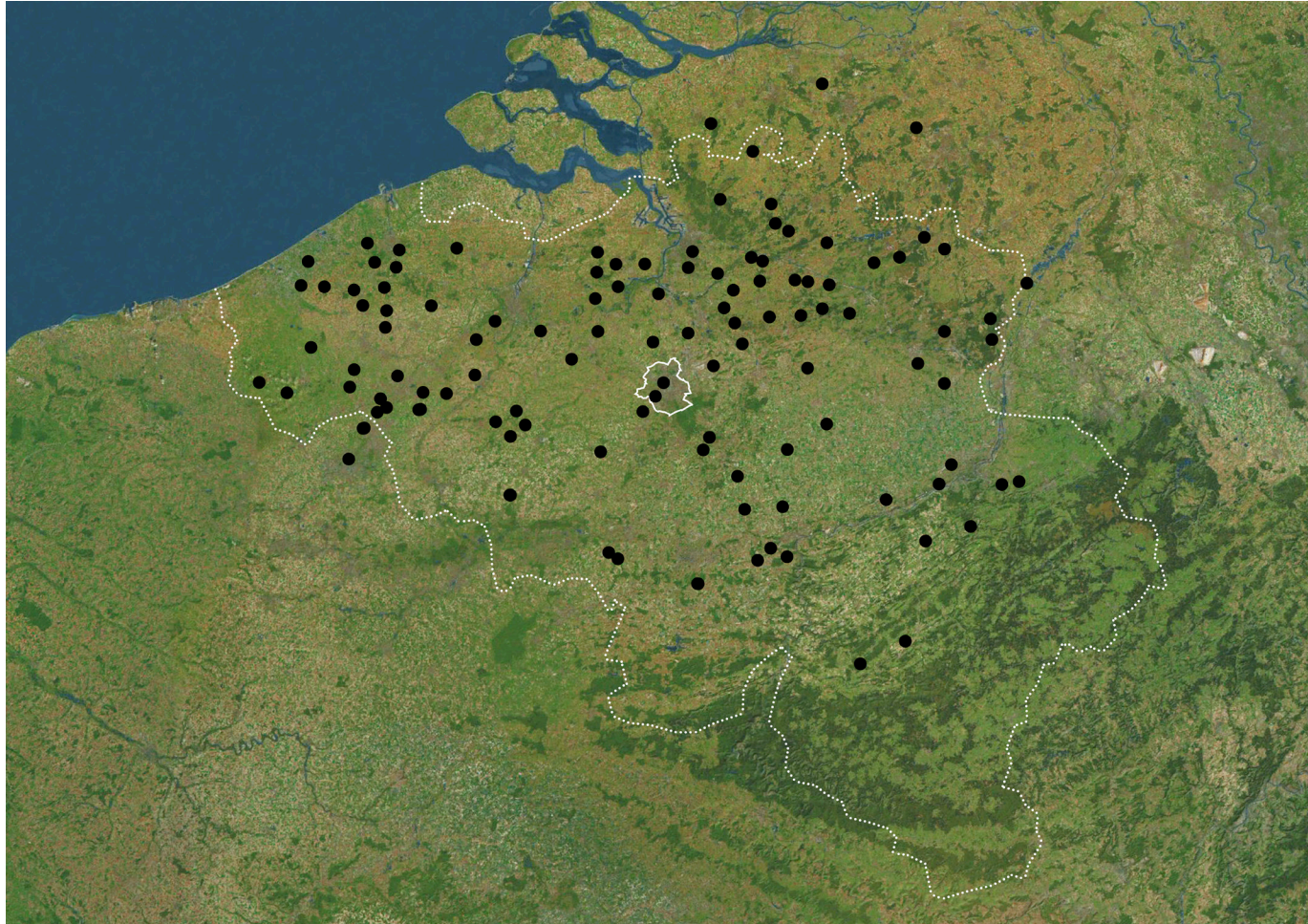
Rotor at work





Brussels' construction waste





Map of resellers





“Rotor Building”



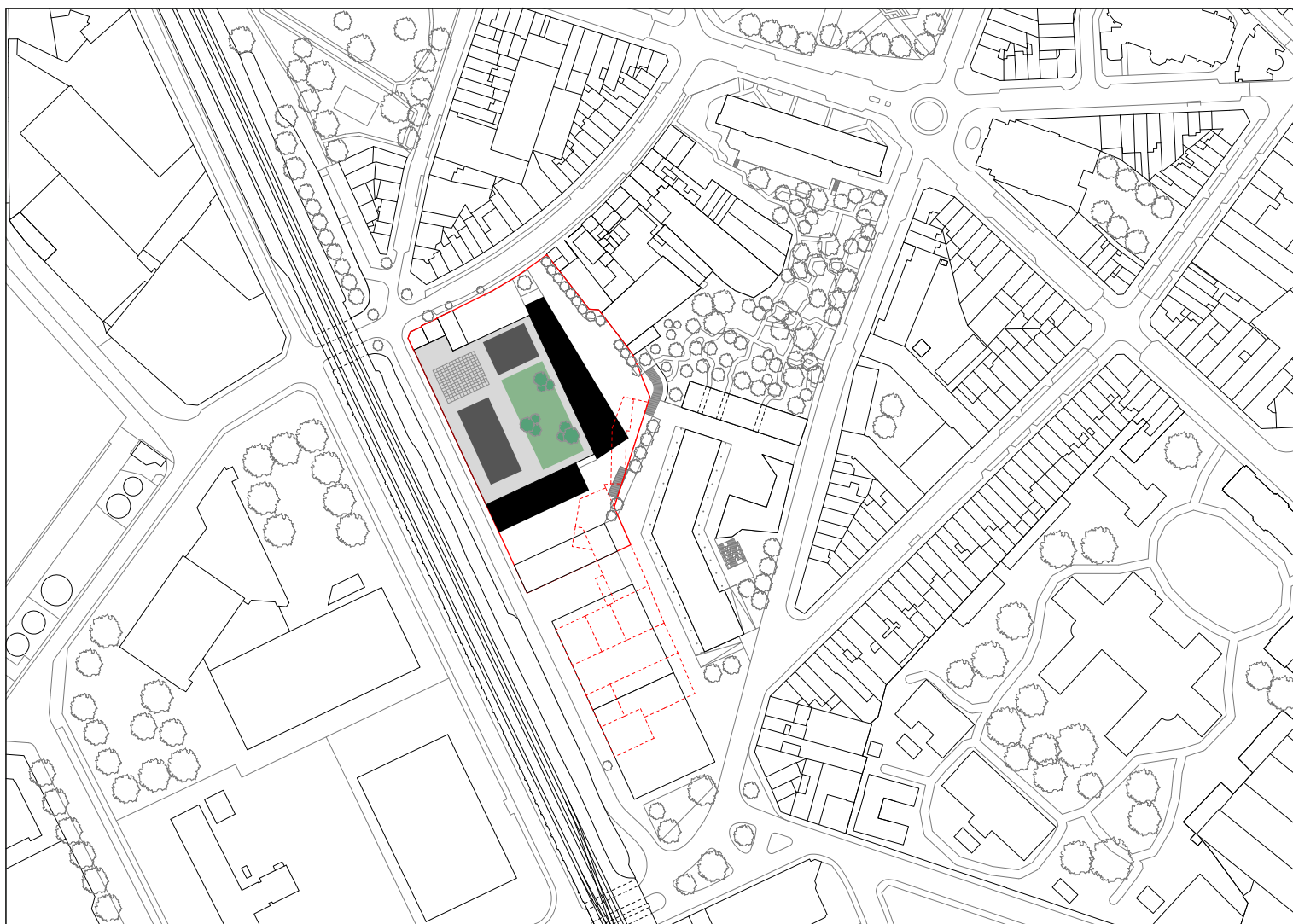


Housing: 16.000 m<sup>2</sup>  
Office: 2.000 m<sup>2</sup>  
Commercial: 1.000 m<sup>2</sup>  
Equipment: 1.000 m<sup>2</sup>

Tot: 20.000 m<sup>2</sup>

Current status - Instability





Housing: 16.000 m<sup>2</sup>  
Office: 2.000 m<sup>2</sup>  
Commercial: 1.000 m<sup>2</sup>  
Equipment: 1.000 m<sup>2</sup>

Tot: 20.000 m<sup>2</sup>

Housing: 9.300 m<sup>2</sup>  
Office: 7.000 m<sup>2</sup>  
Commercial: 1.000 m<sup>2</sup>  
Warehouse+Public: 2.700 m<sup>2</sup>

Tot: 20.000 m<sup>2</sup>

Proposal



Connections





Site overview





Le Goujon



Brick town houses



Urban elevation 1/500 - Existing

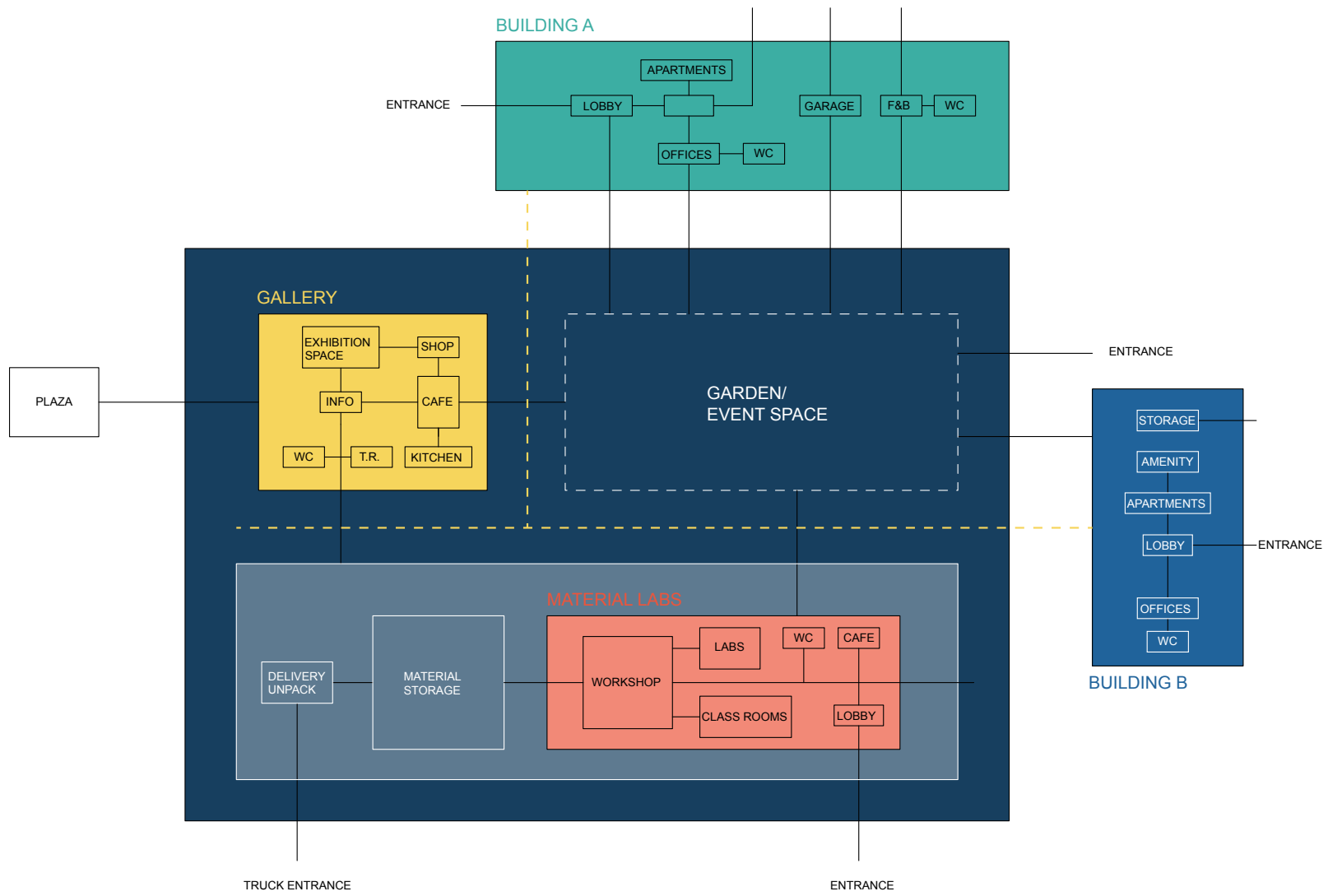


Urban elevation 1/500 - Intervention

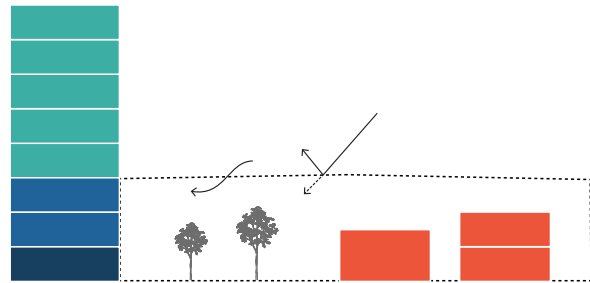




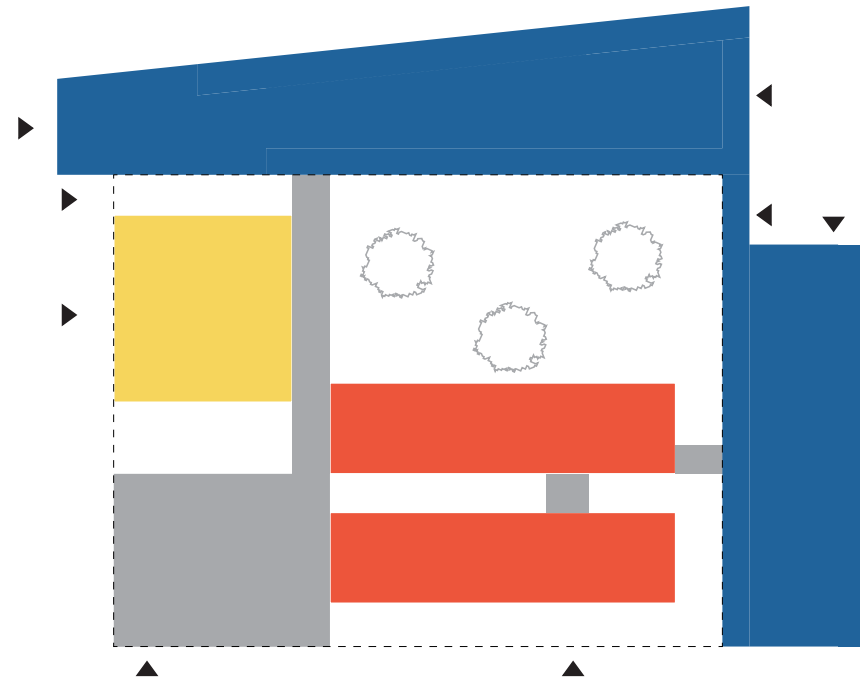
- Offices/Hosing
- Covered Garden
- Gallery
- Workshops



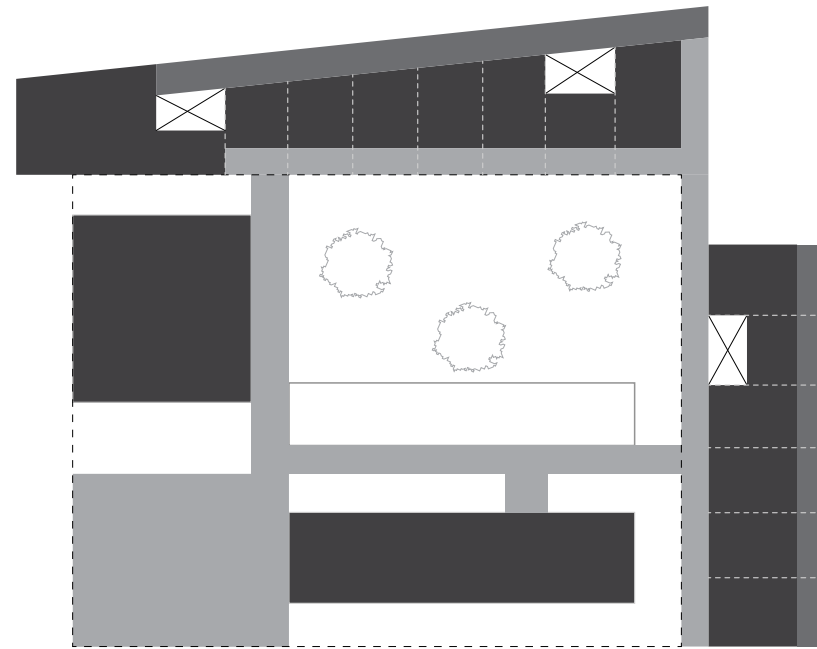
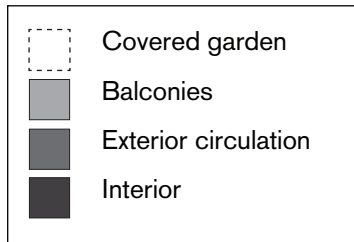
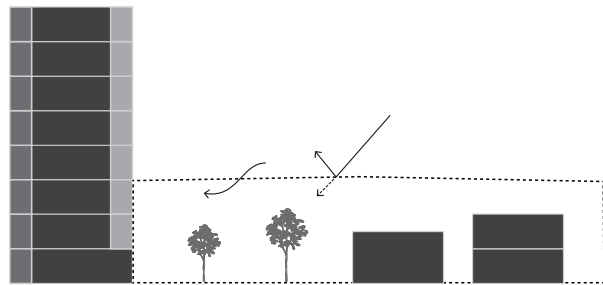




- Offices
- Housing
- Gallery
- Workshops



Program

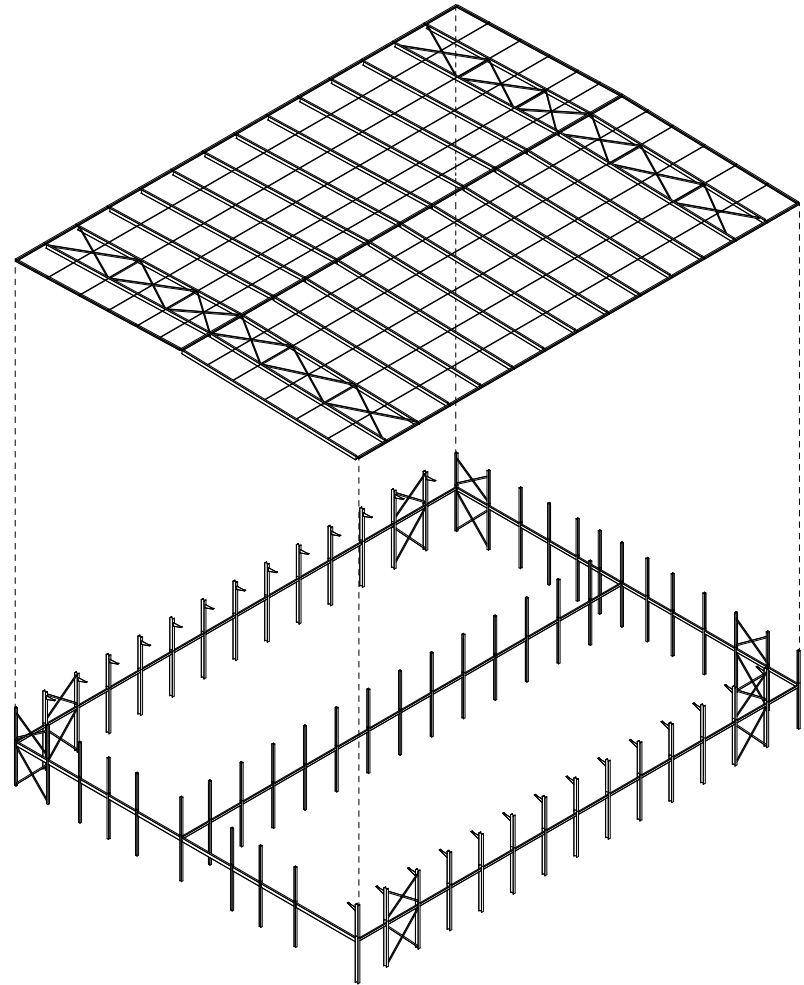


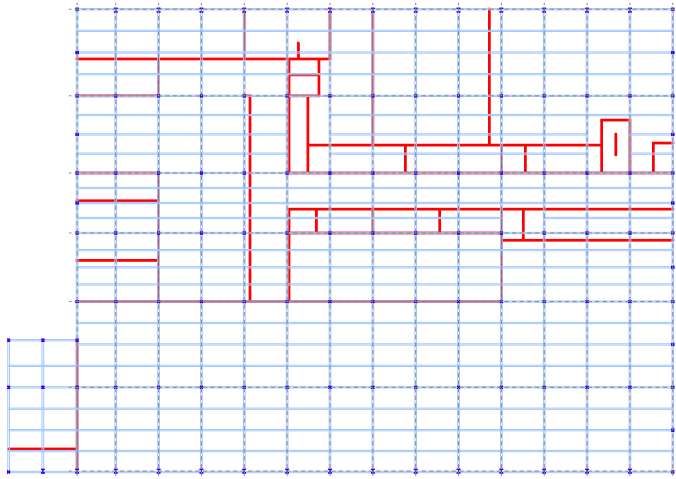
Circulation

### **3. Design: Living and Working**

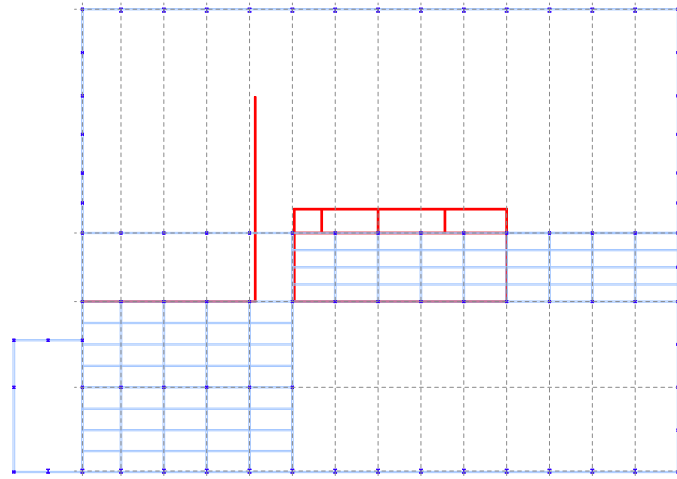


Existing structure

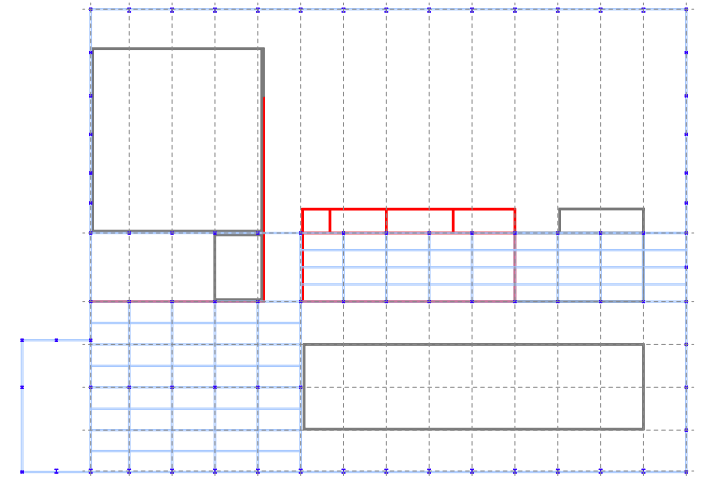




Existing

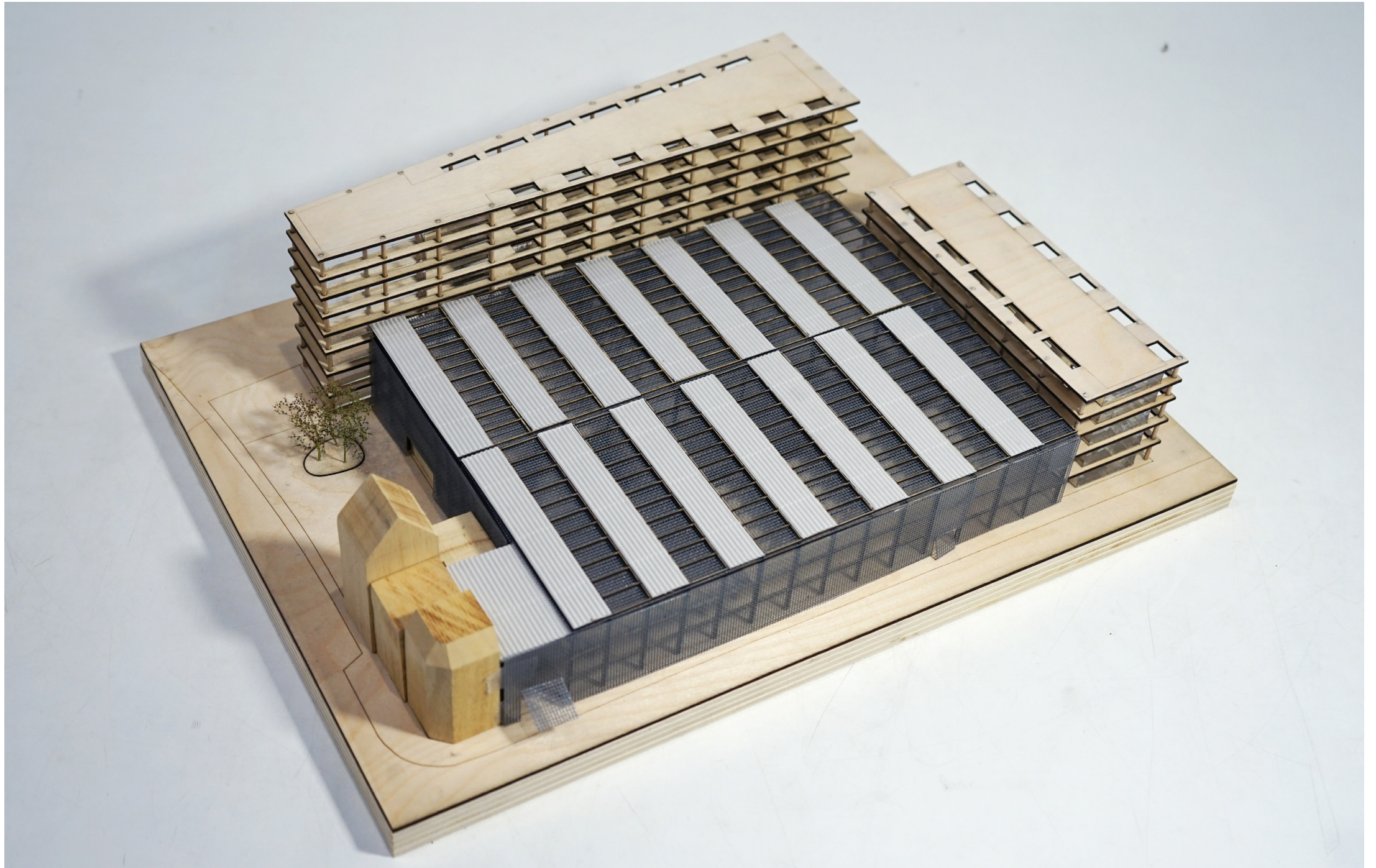


Kept

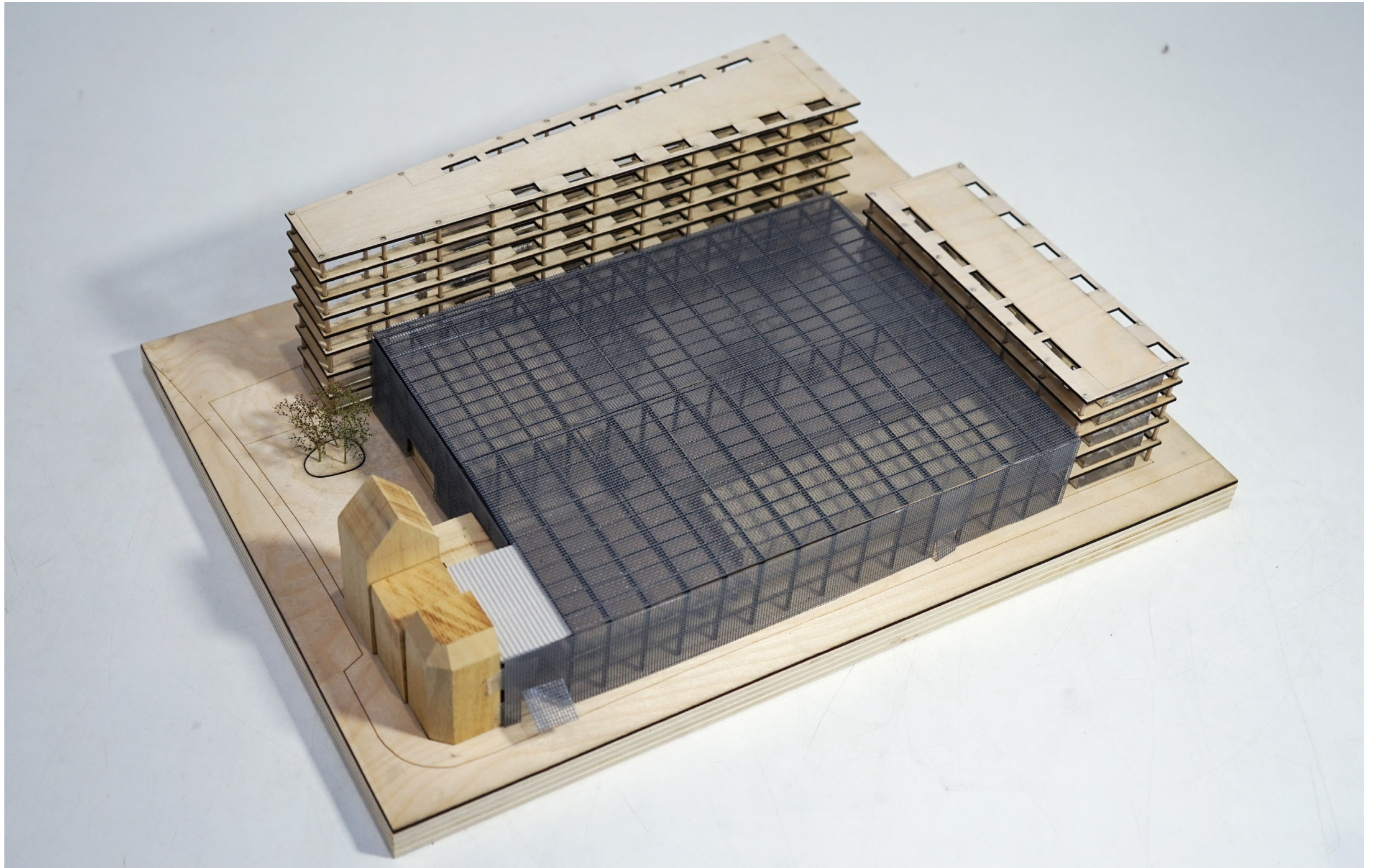


New

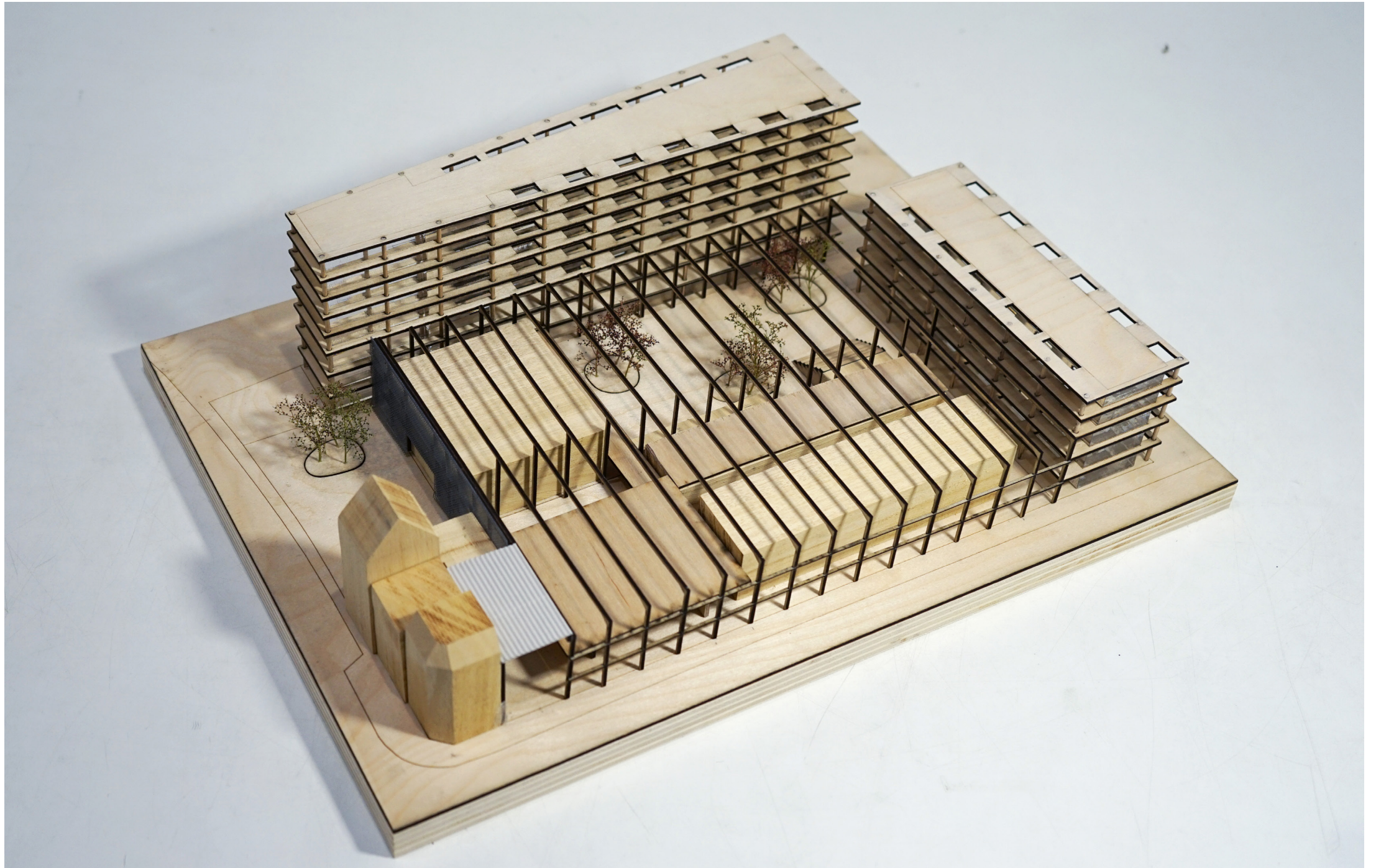








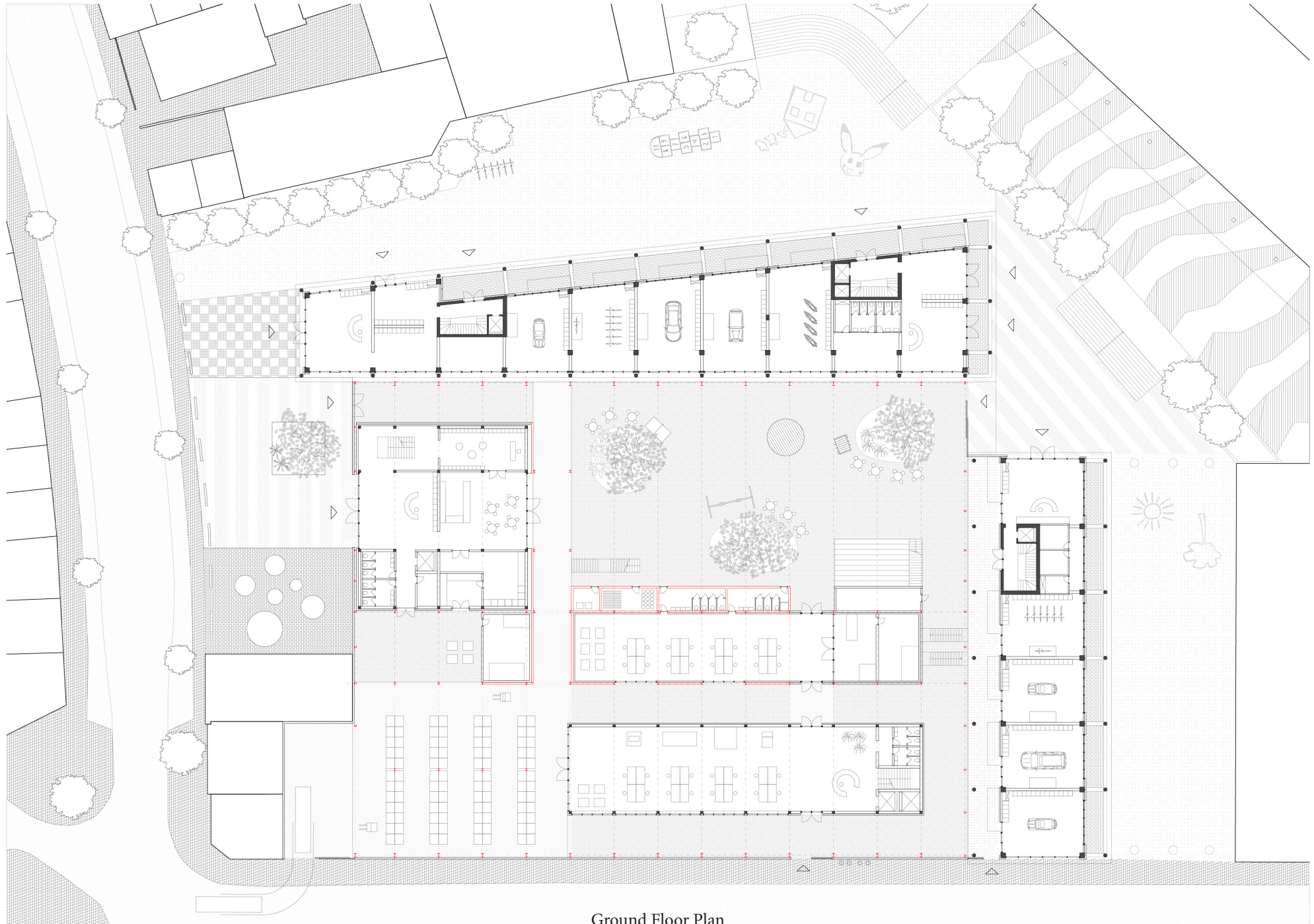










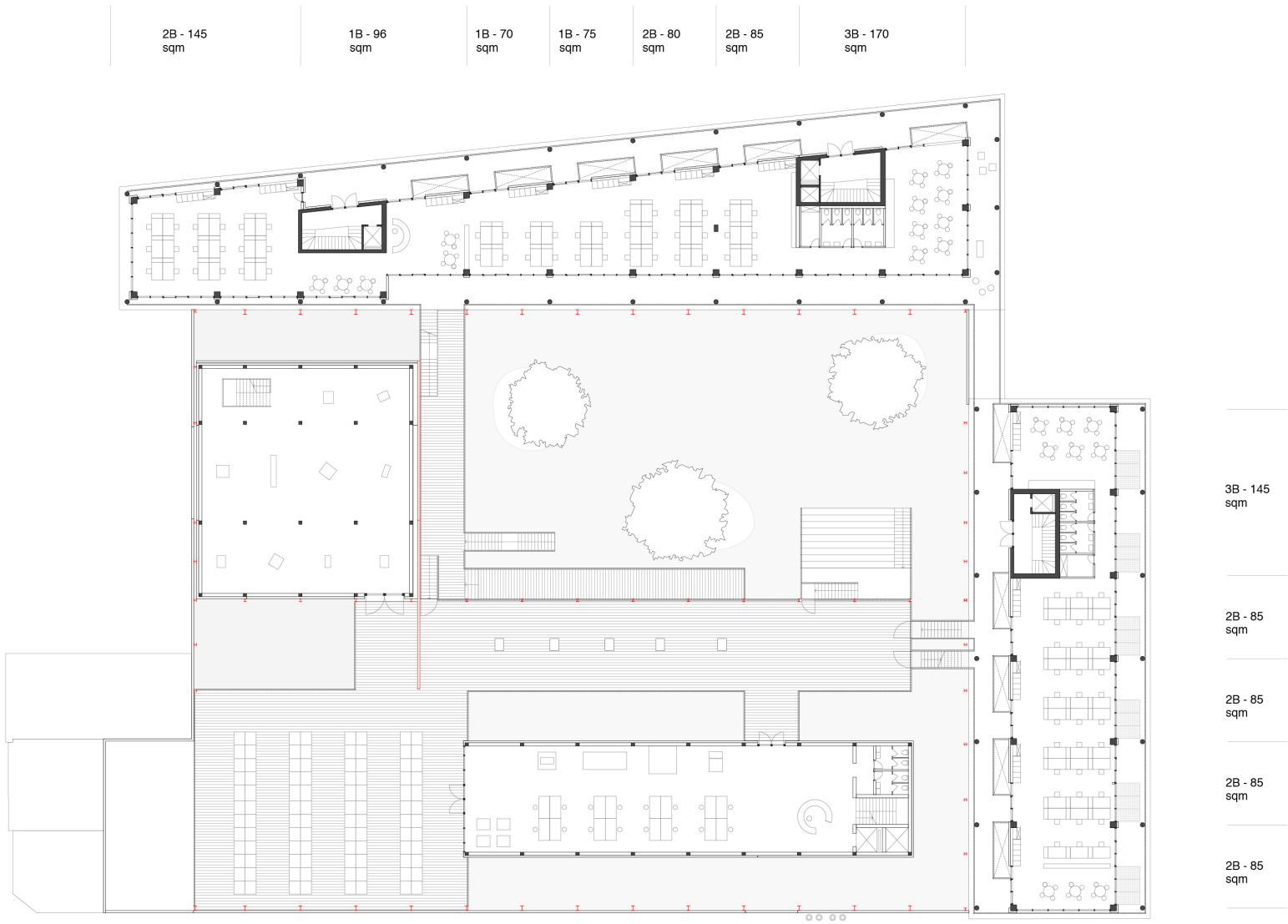


Ground Floor Plan

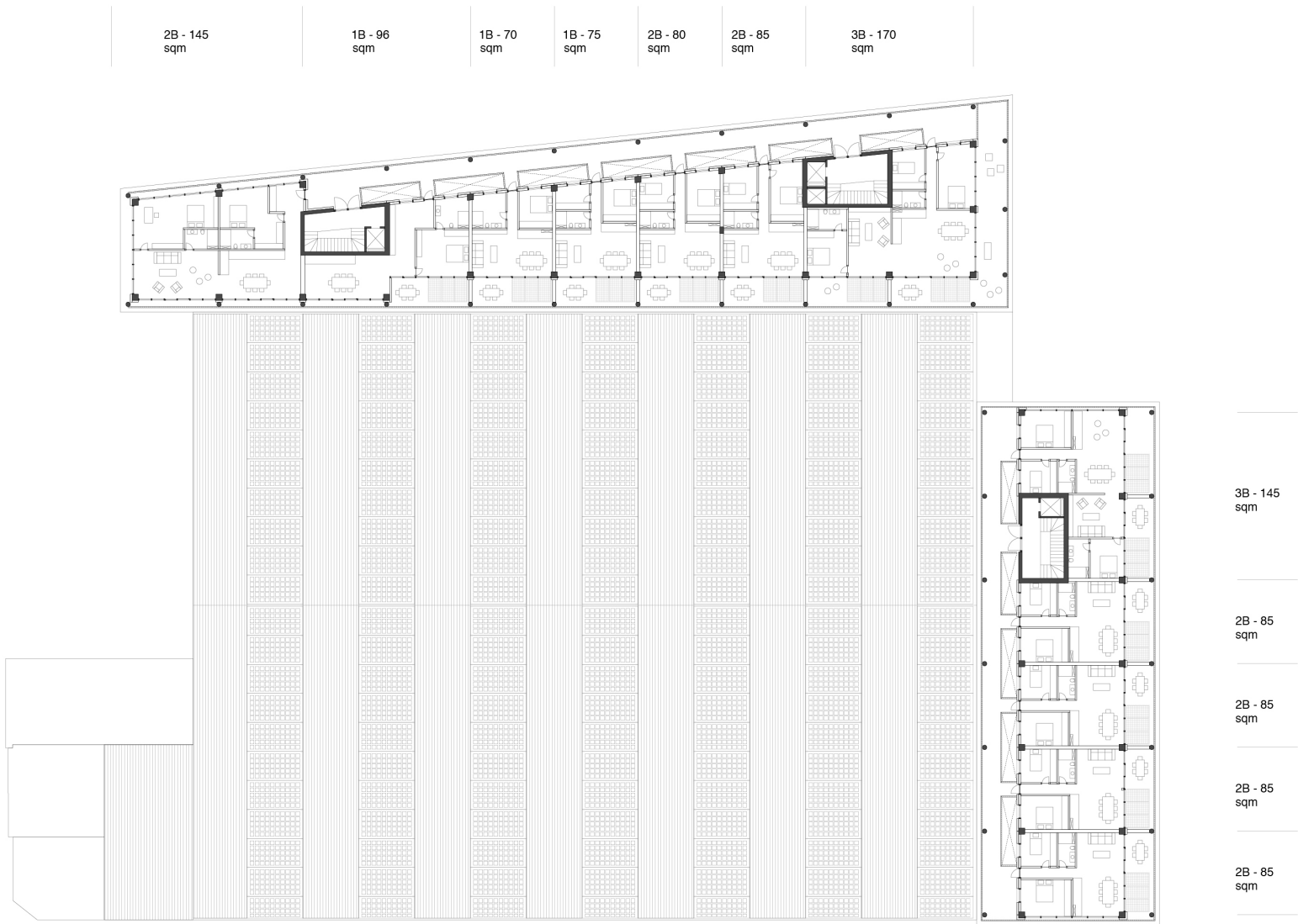






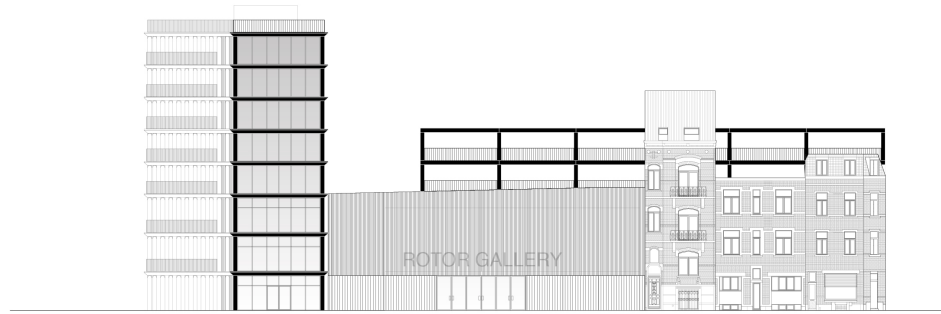


Second Floor



Apartments Floor



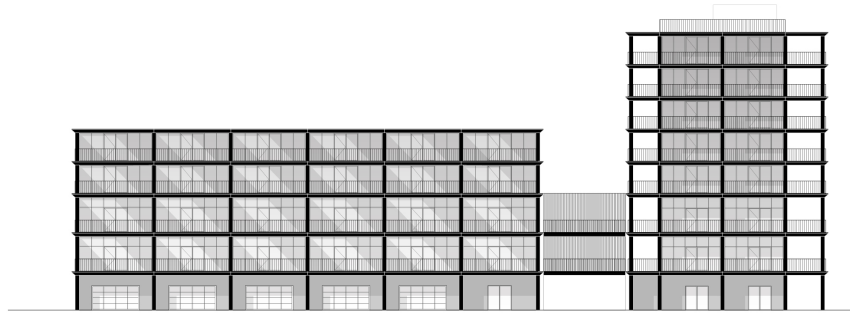


West



South





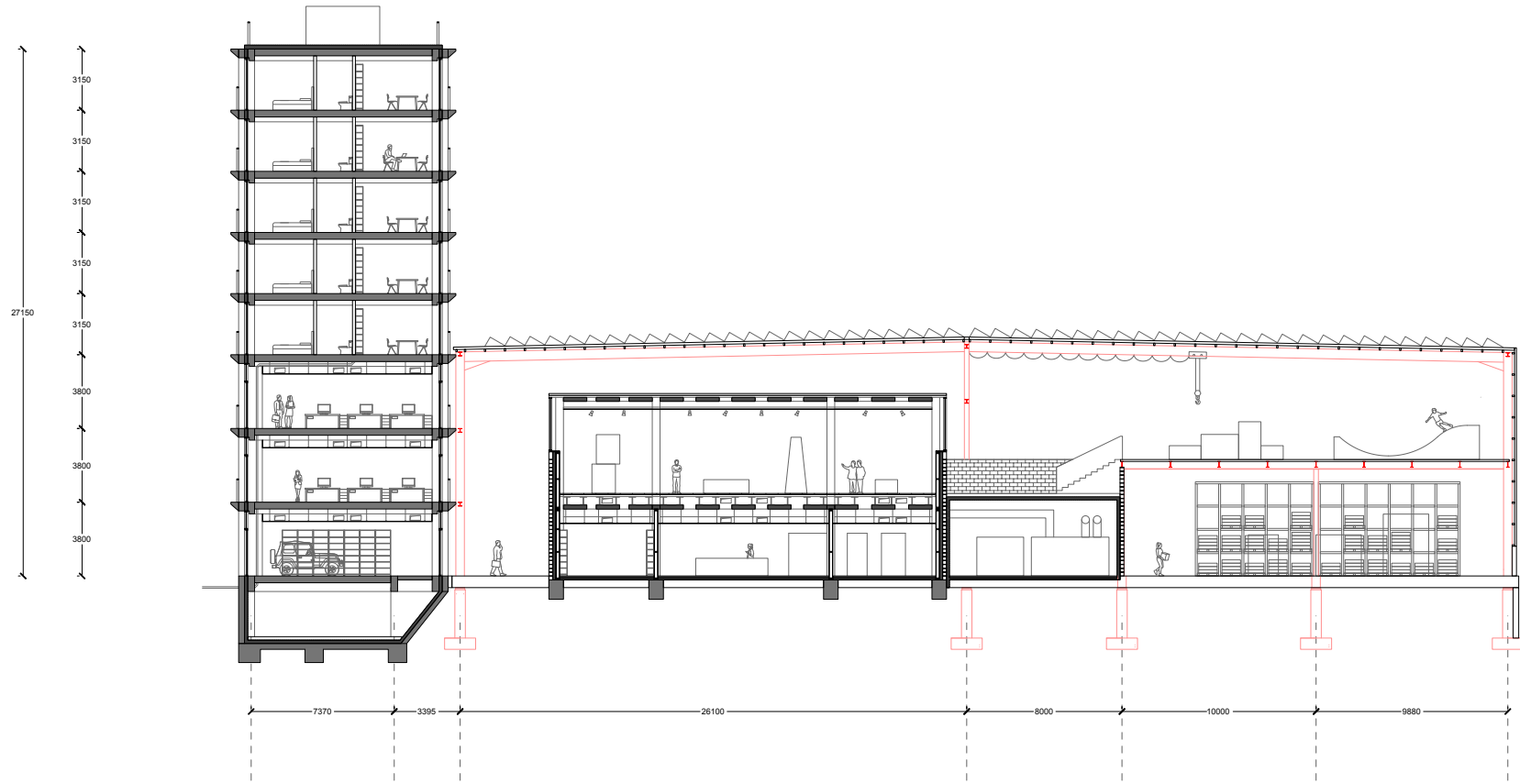
East

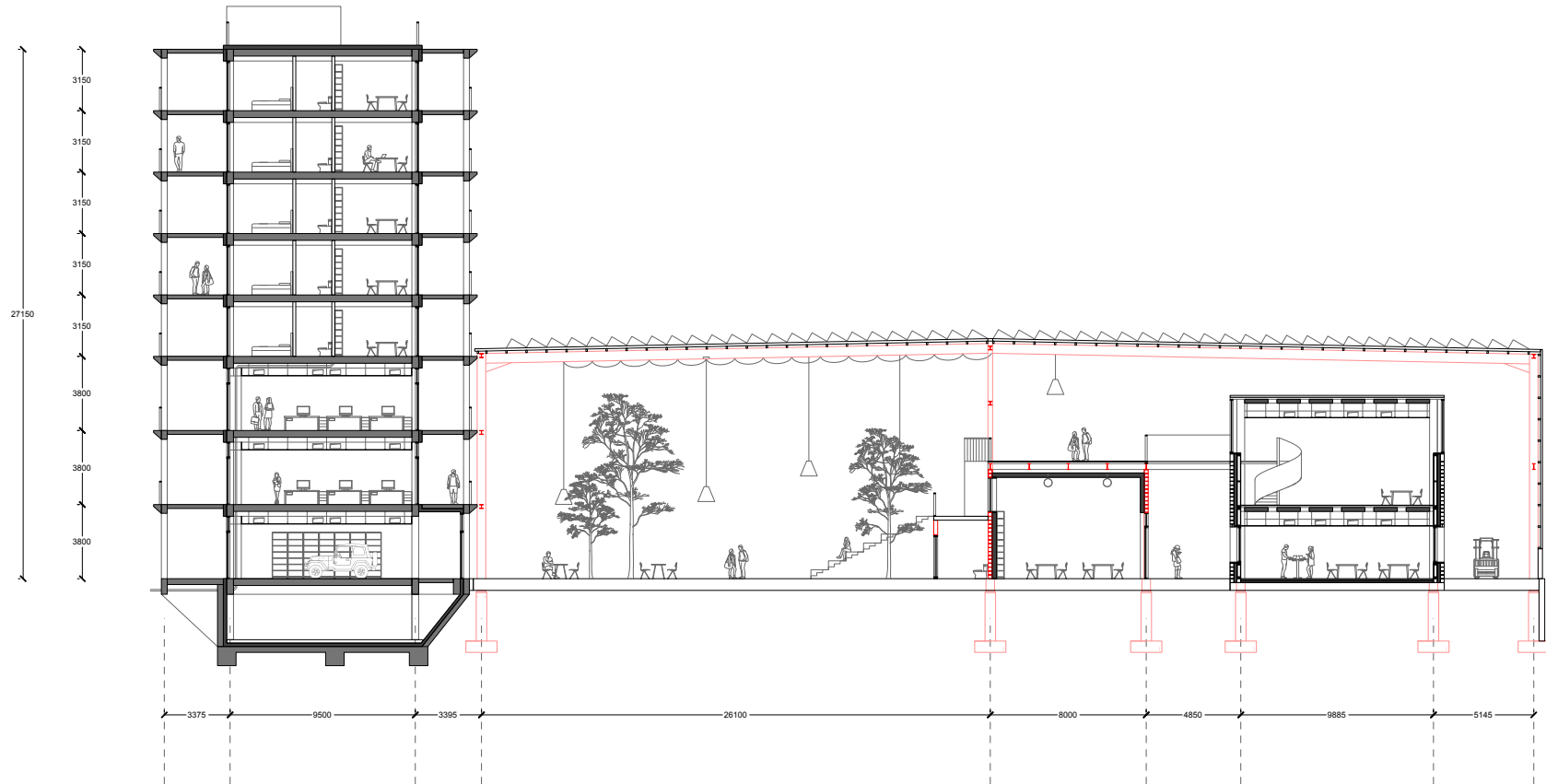


North





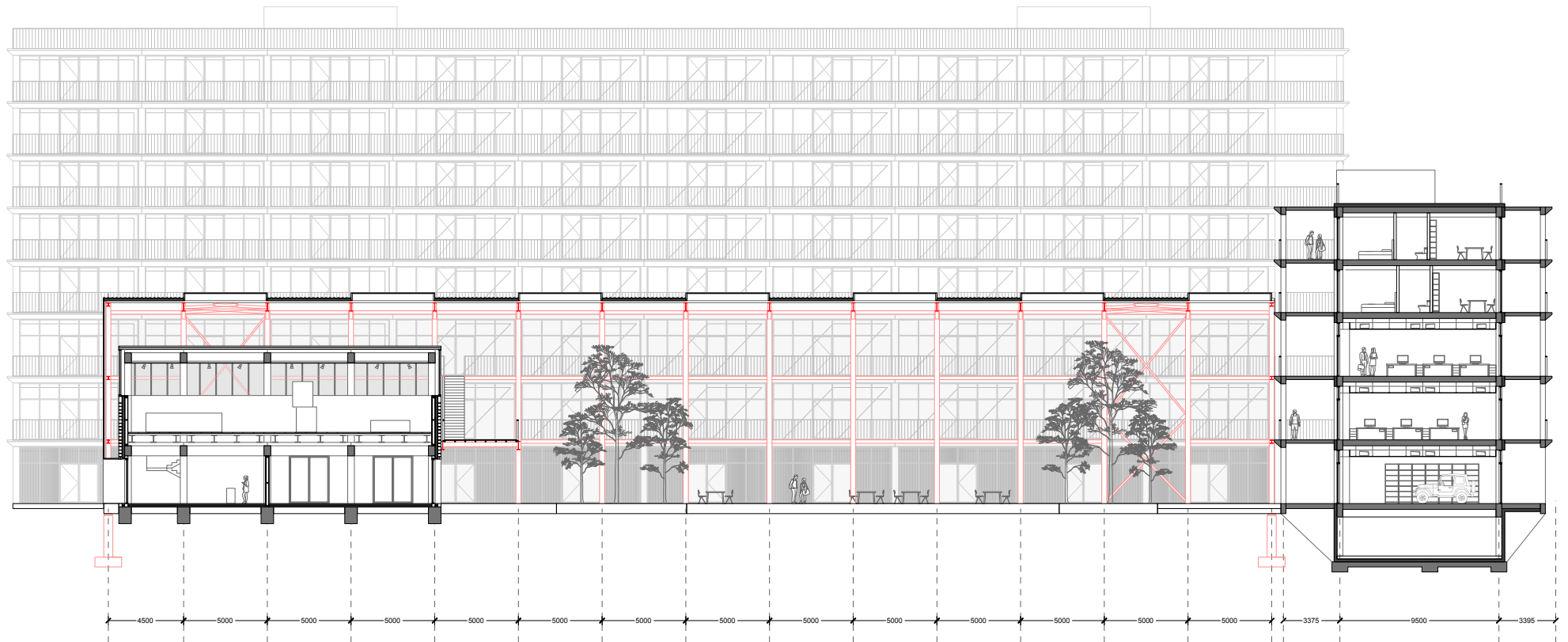








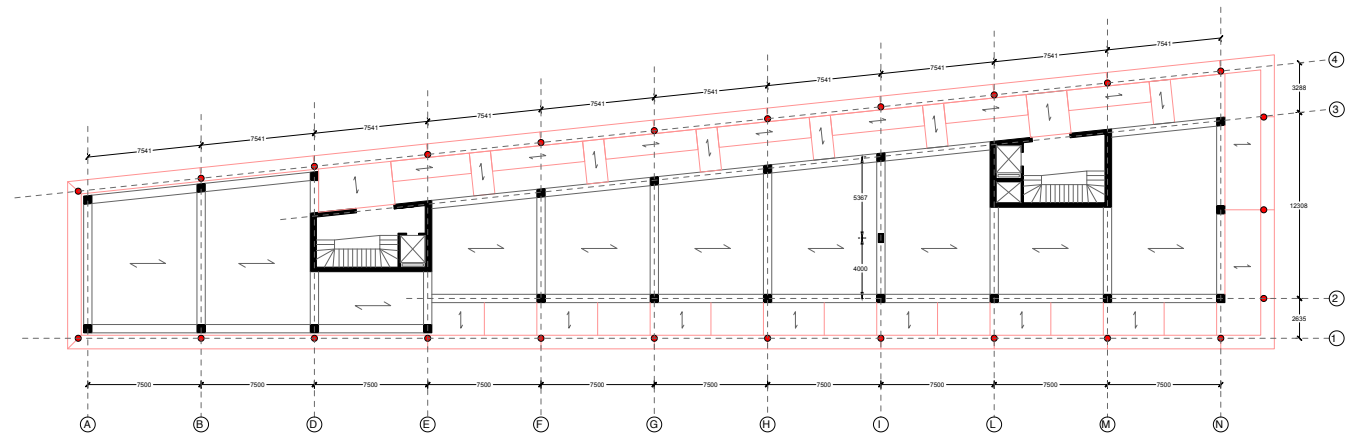




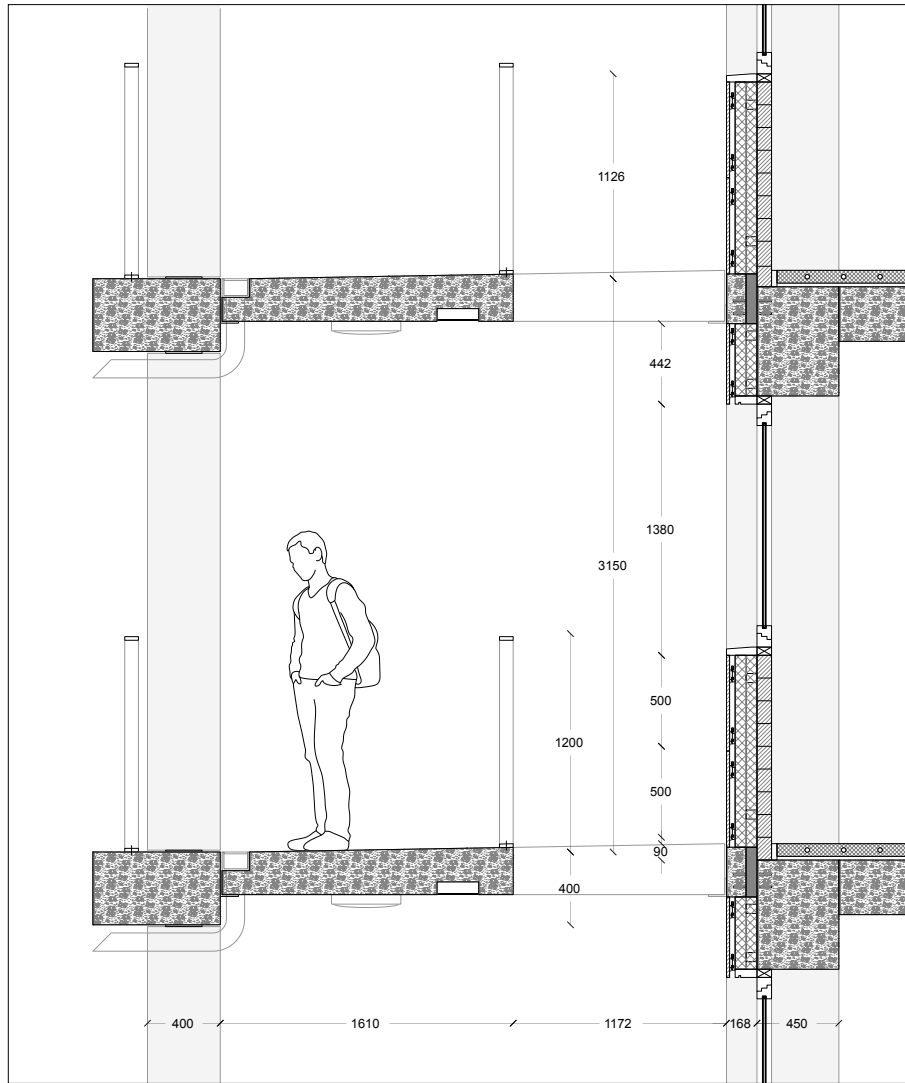




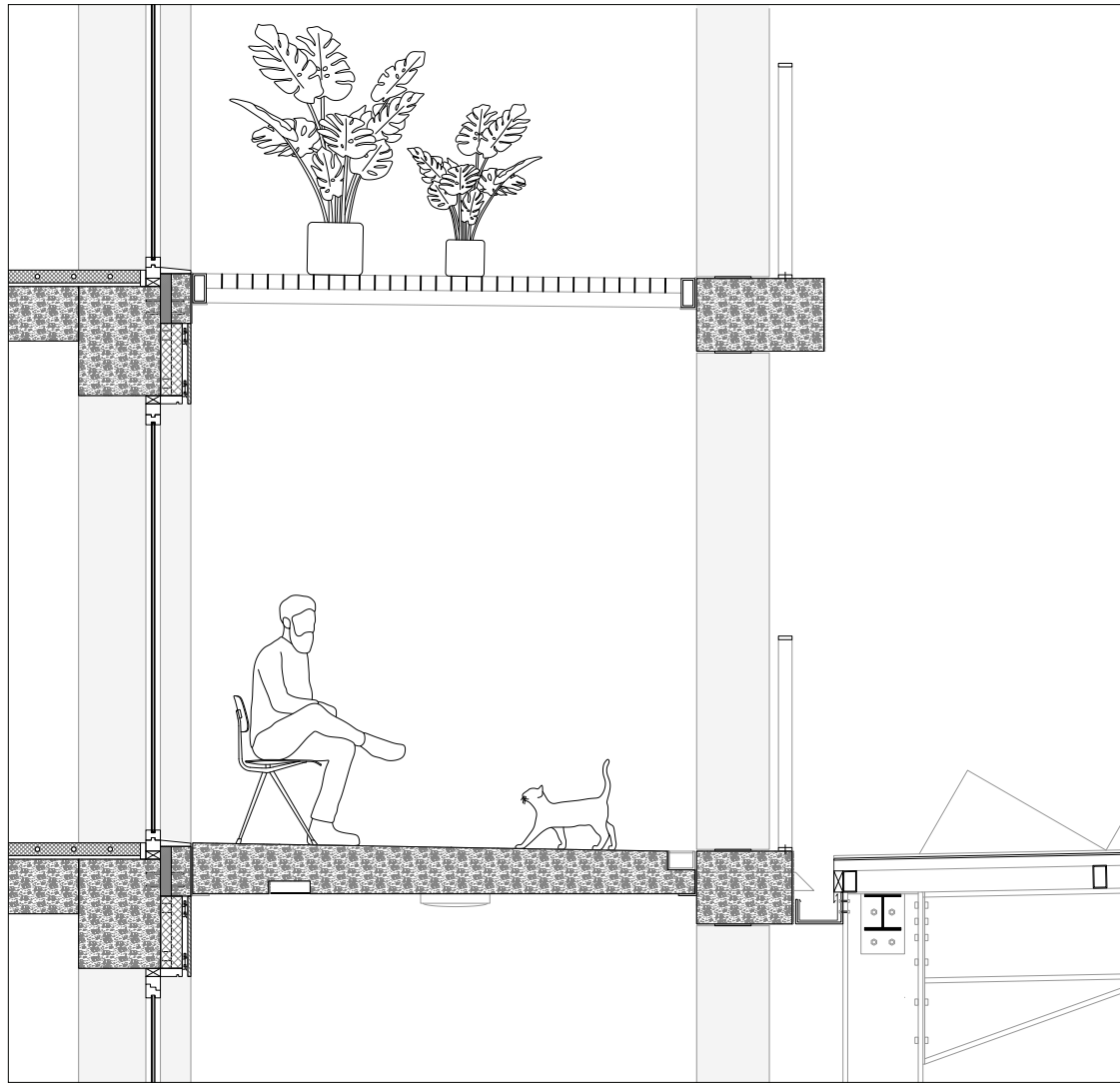








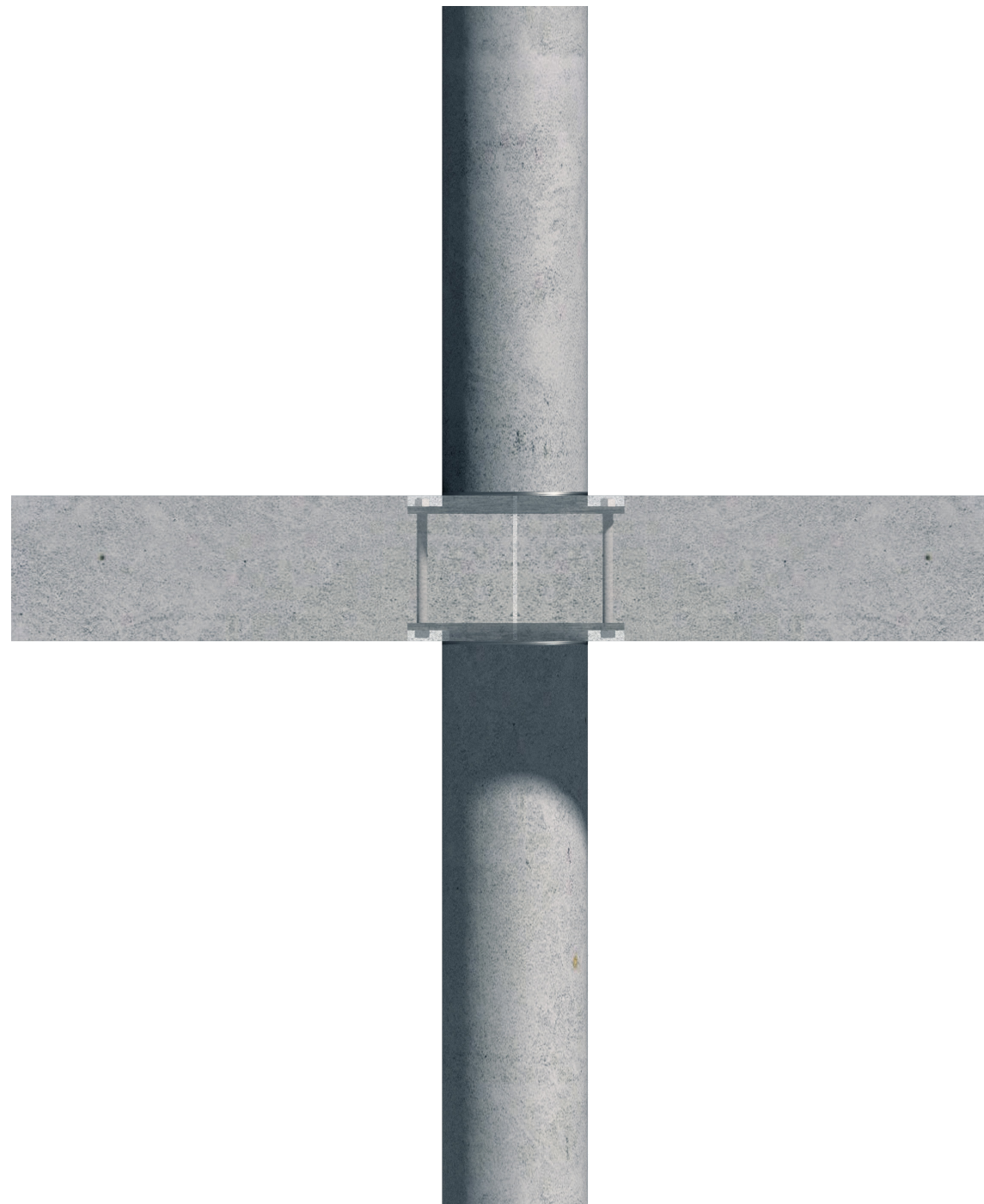
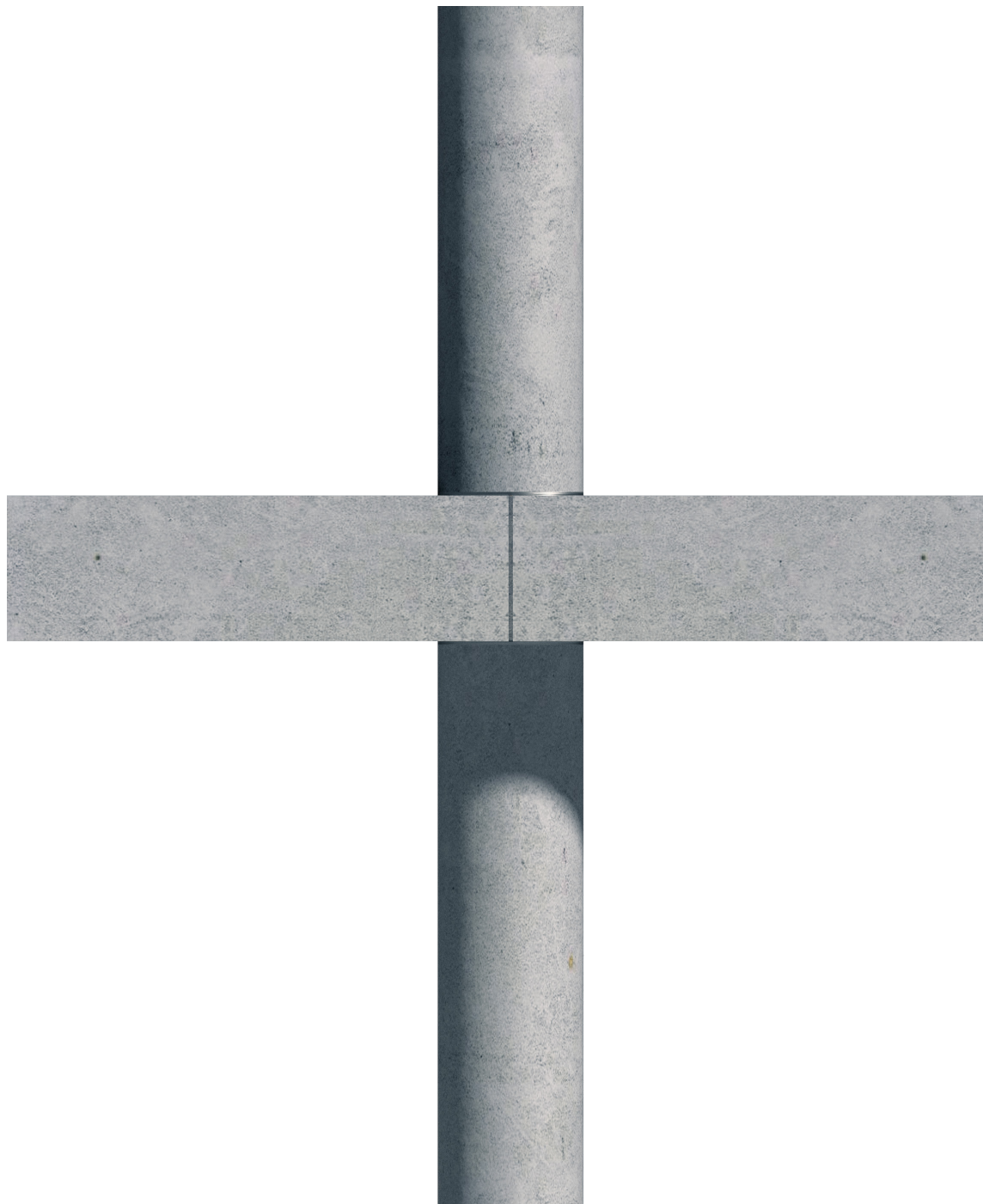


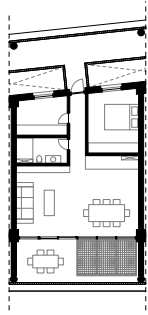


1/20

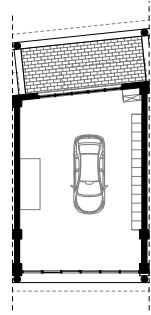




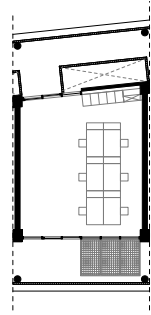




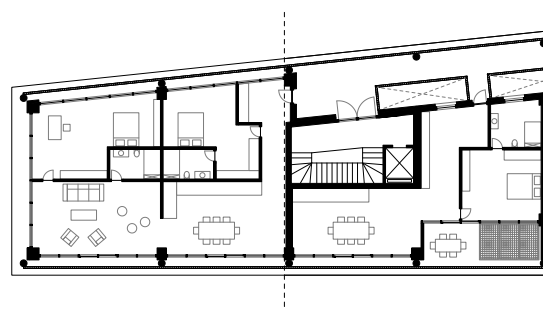
1. small resi



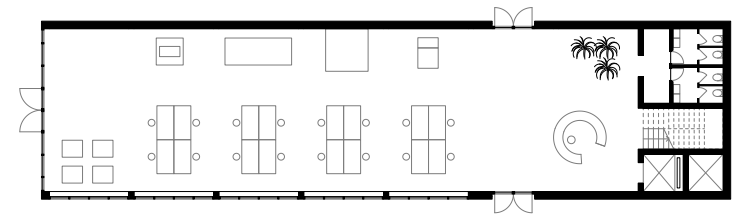
2. garage/workshop



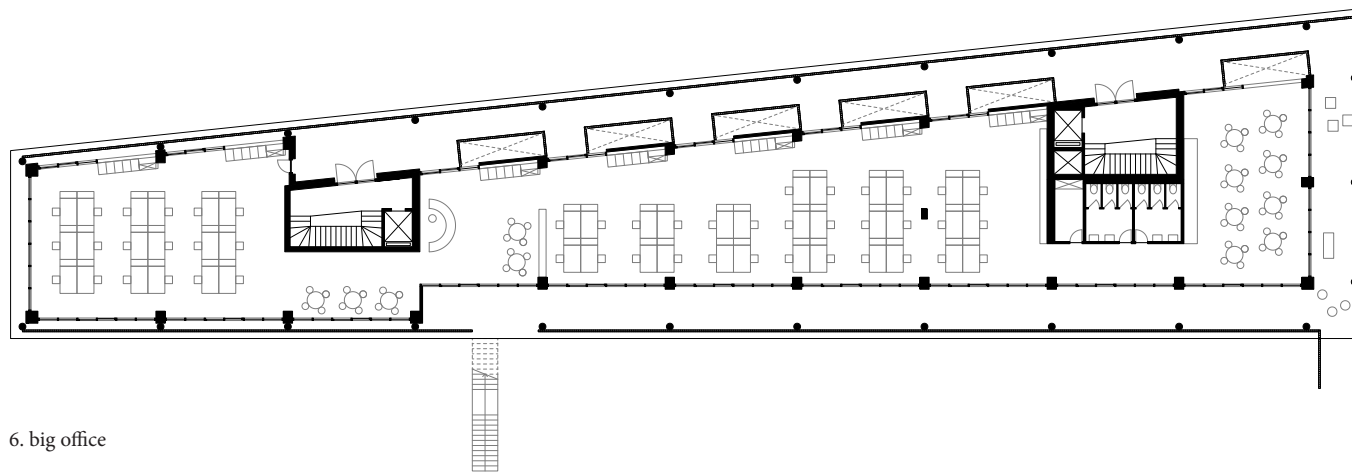
3. small office



4. big resi

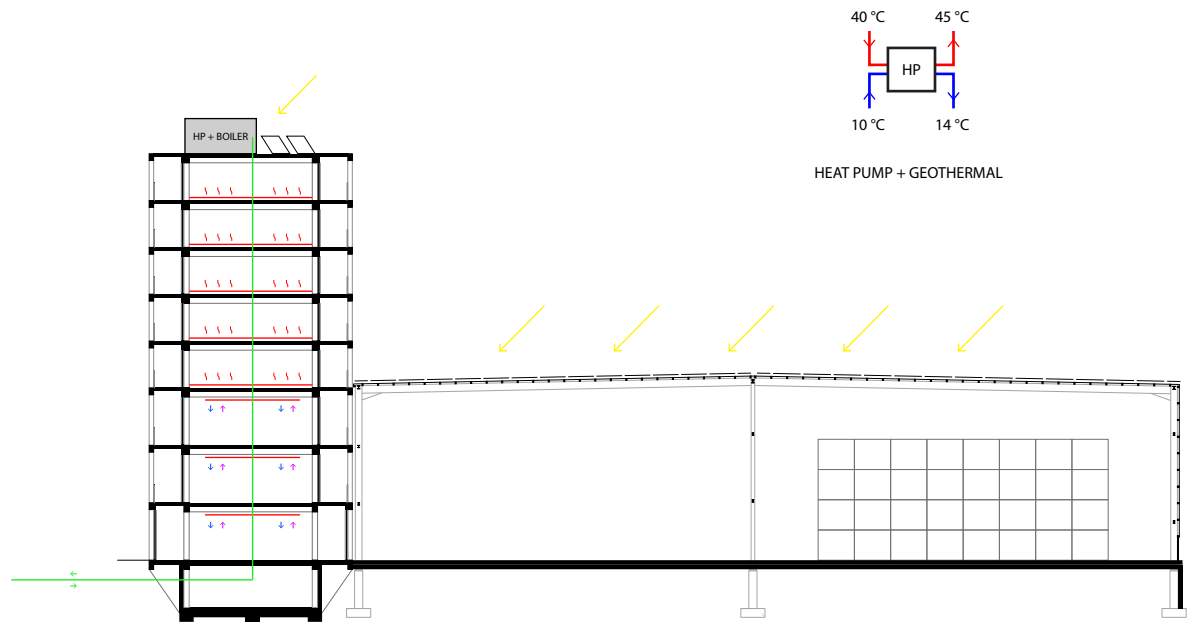


5. workshops

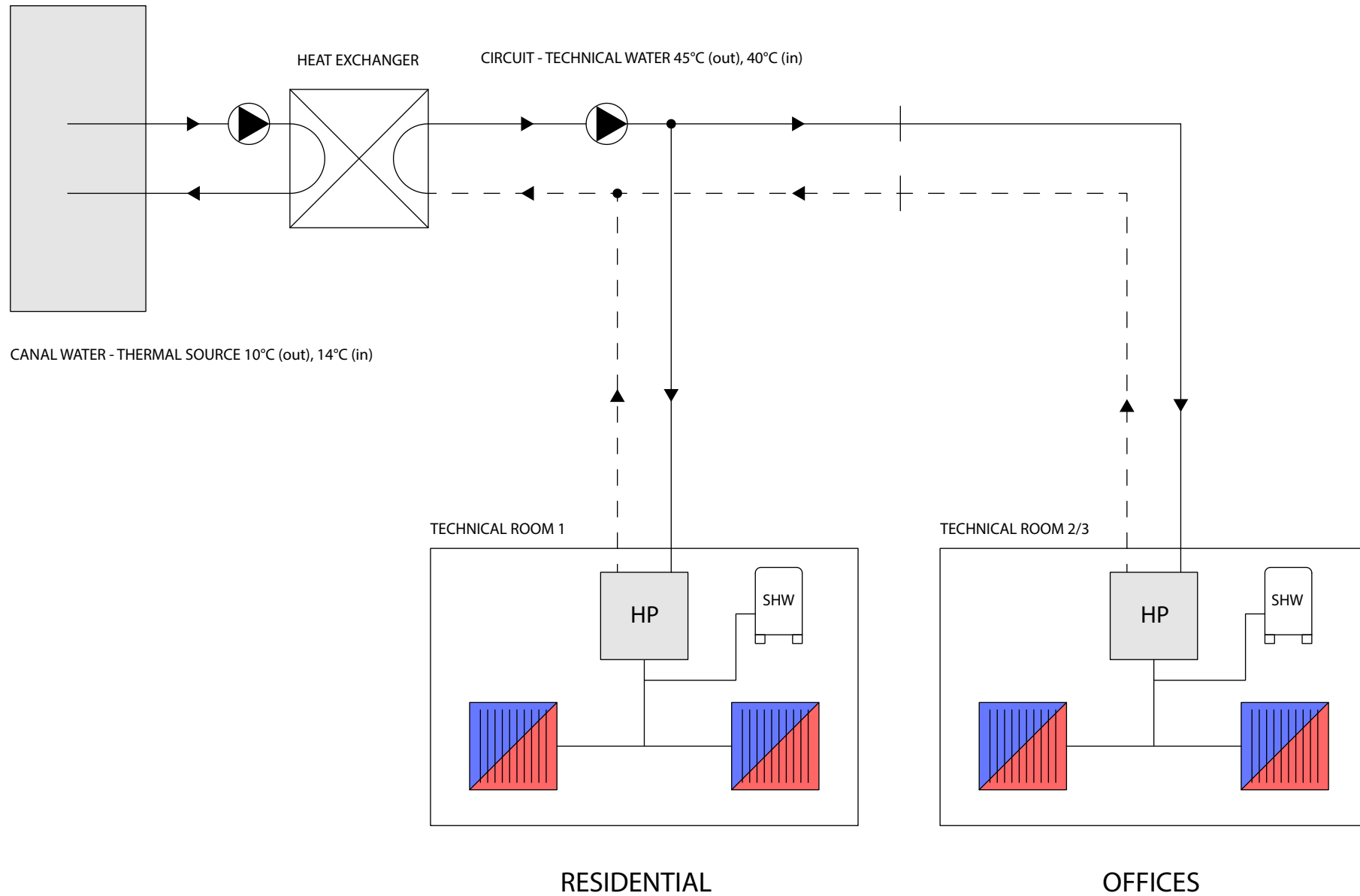


6. big office

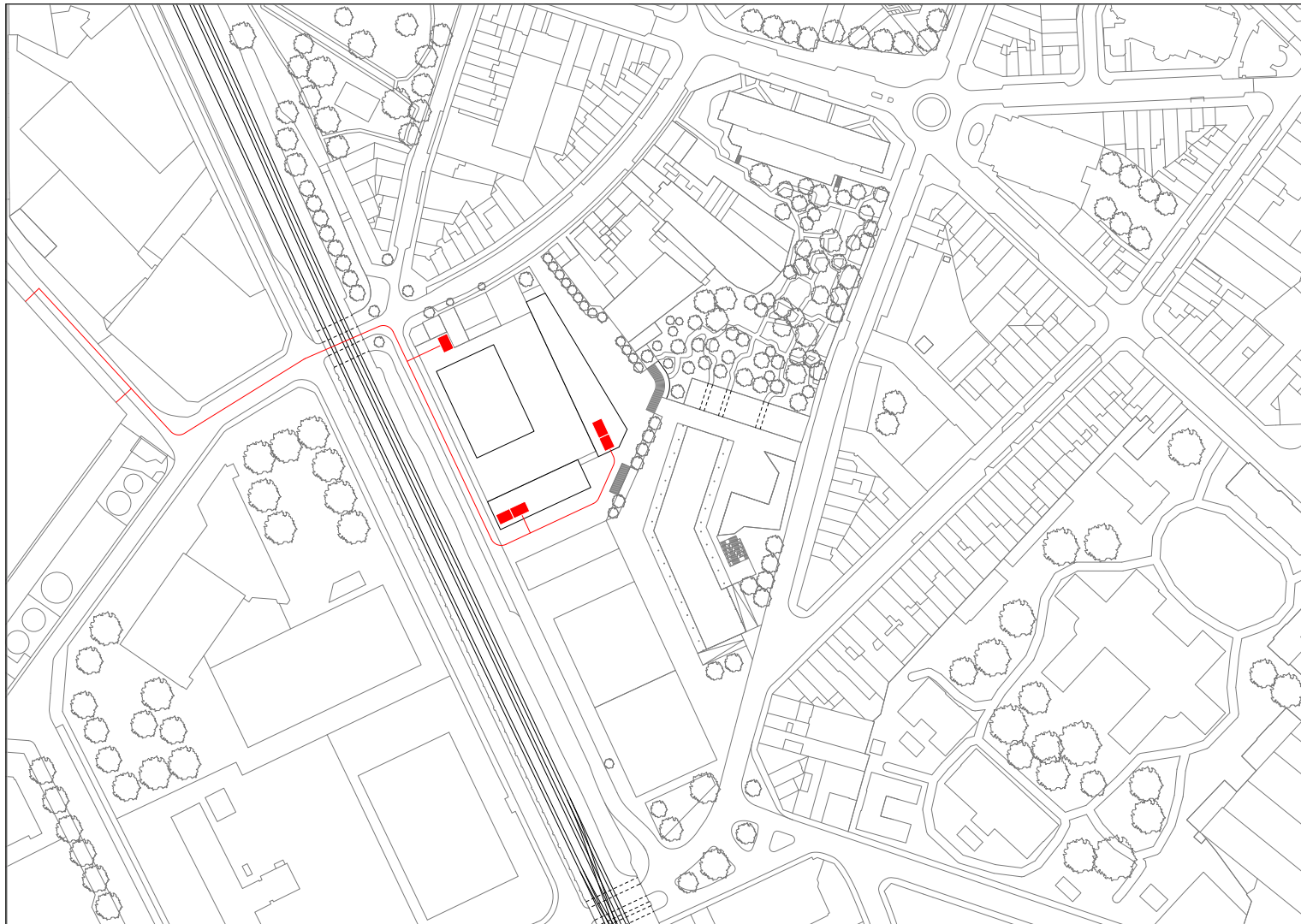




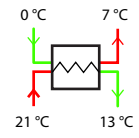
Climate strategy



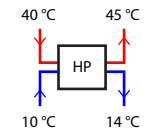




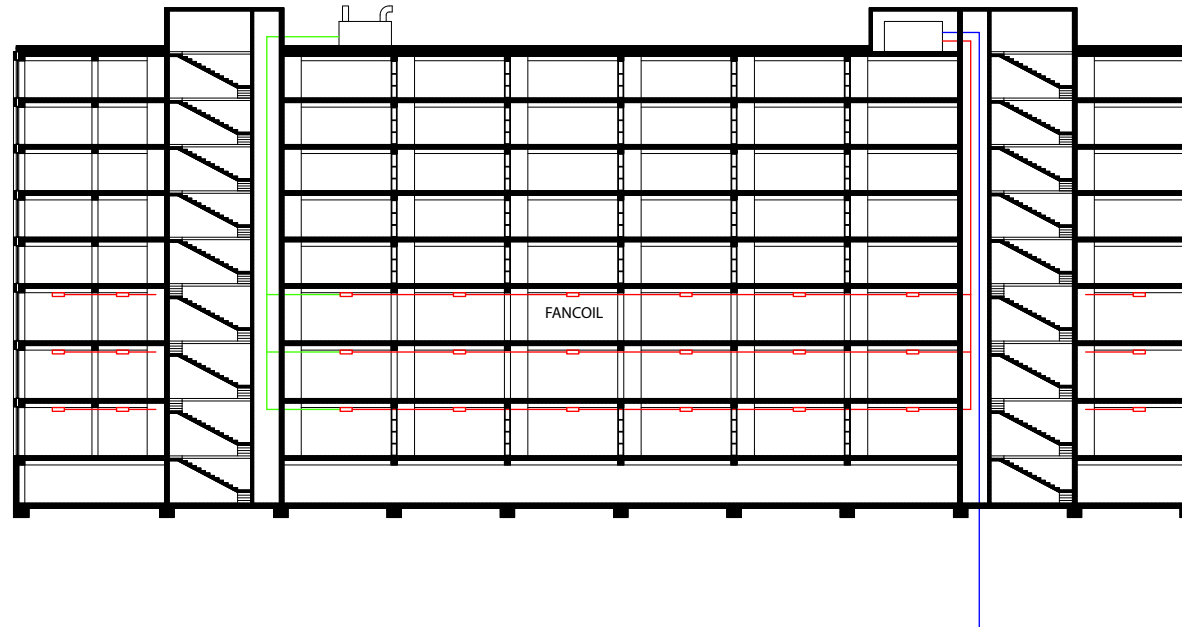
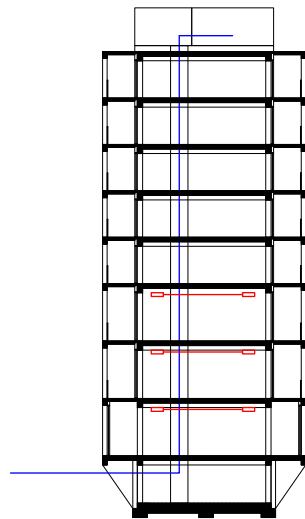
Geothermal water



HEAT RECOVERY

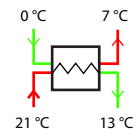


HEAT PUMP + GEOTHERMAL

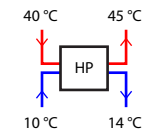


mechanical ventilation offices

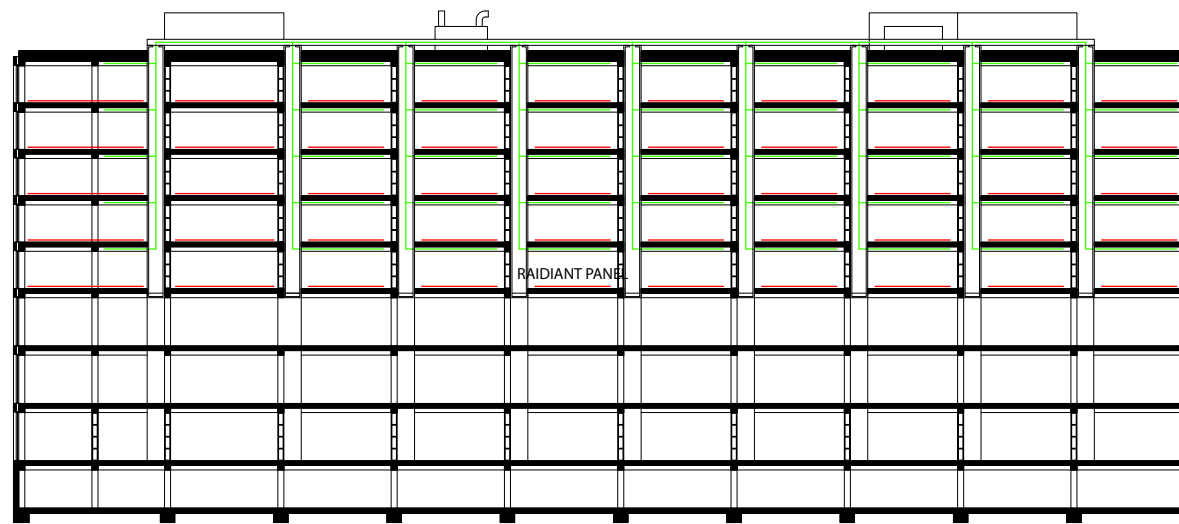
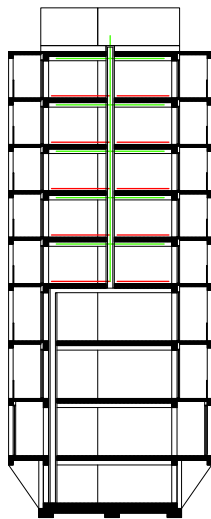




HEAT RECOVERY



HEAT PUMP + GEOTHERMAL



mechanical ventilation apartments





Thank you