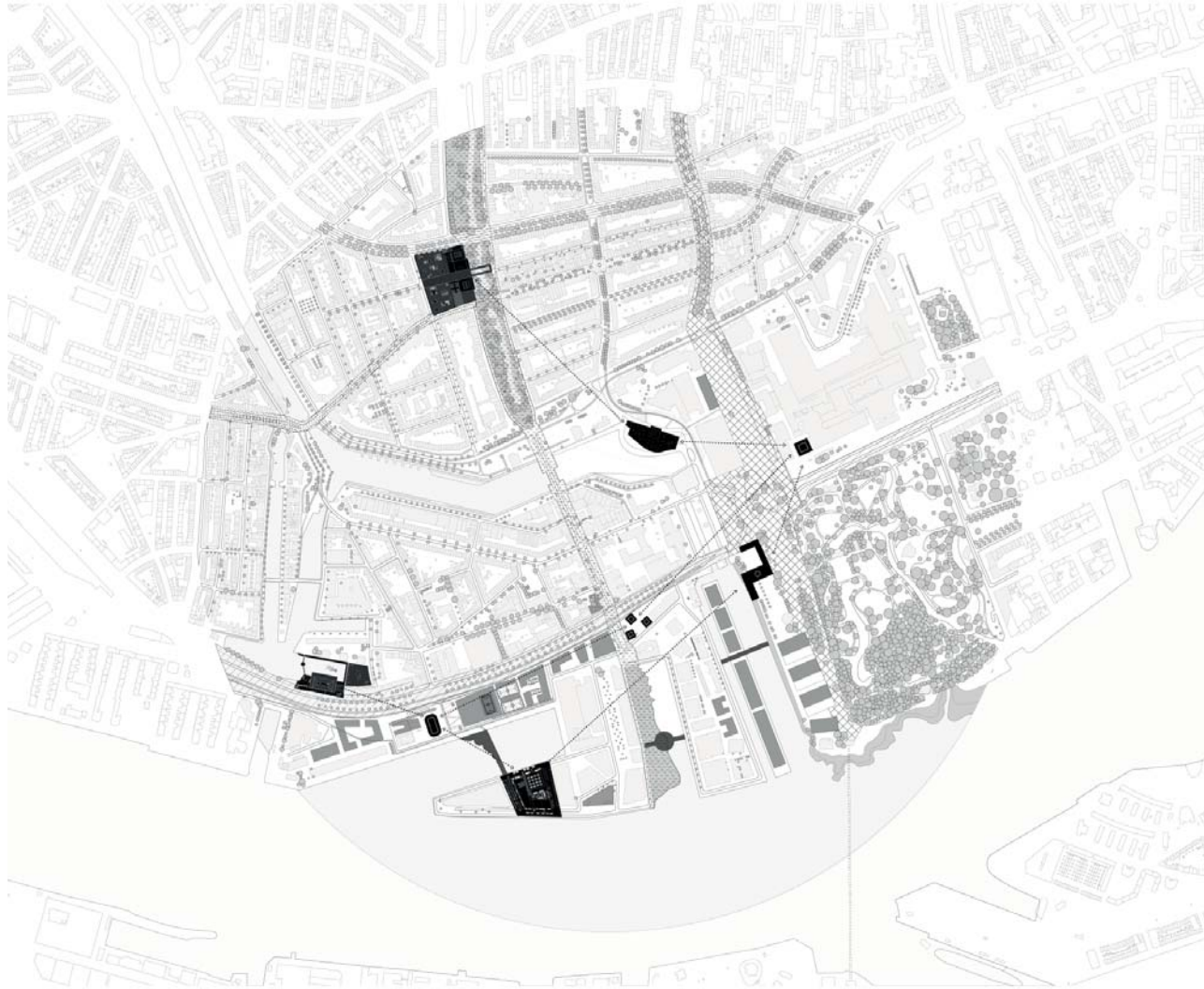


DRAWING SET



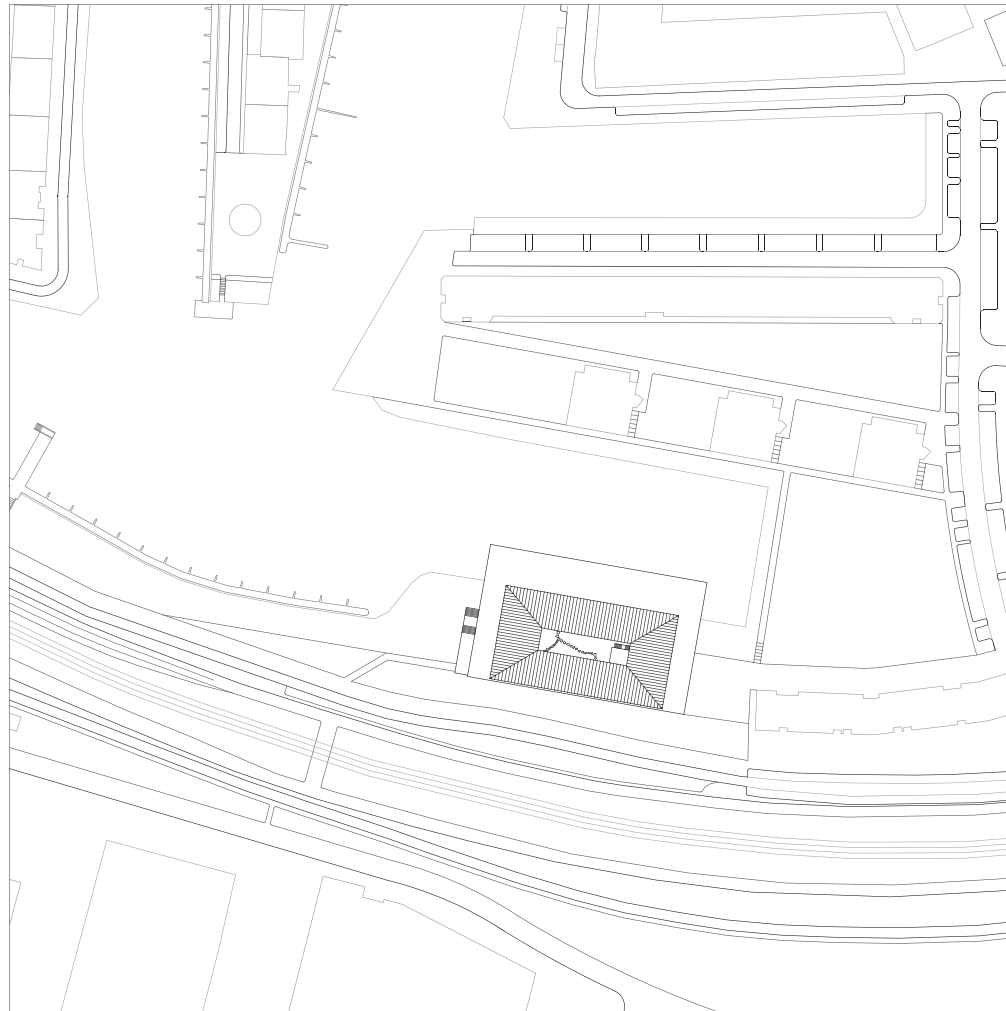
Implementation

GROUP SITE PLAN 1:10000



Implementation

SITE PLAN 1:1000

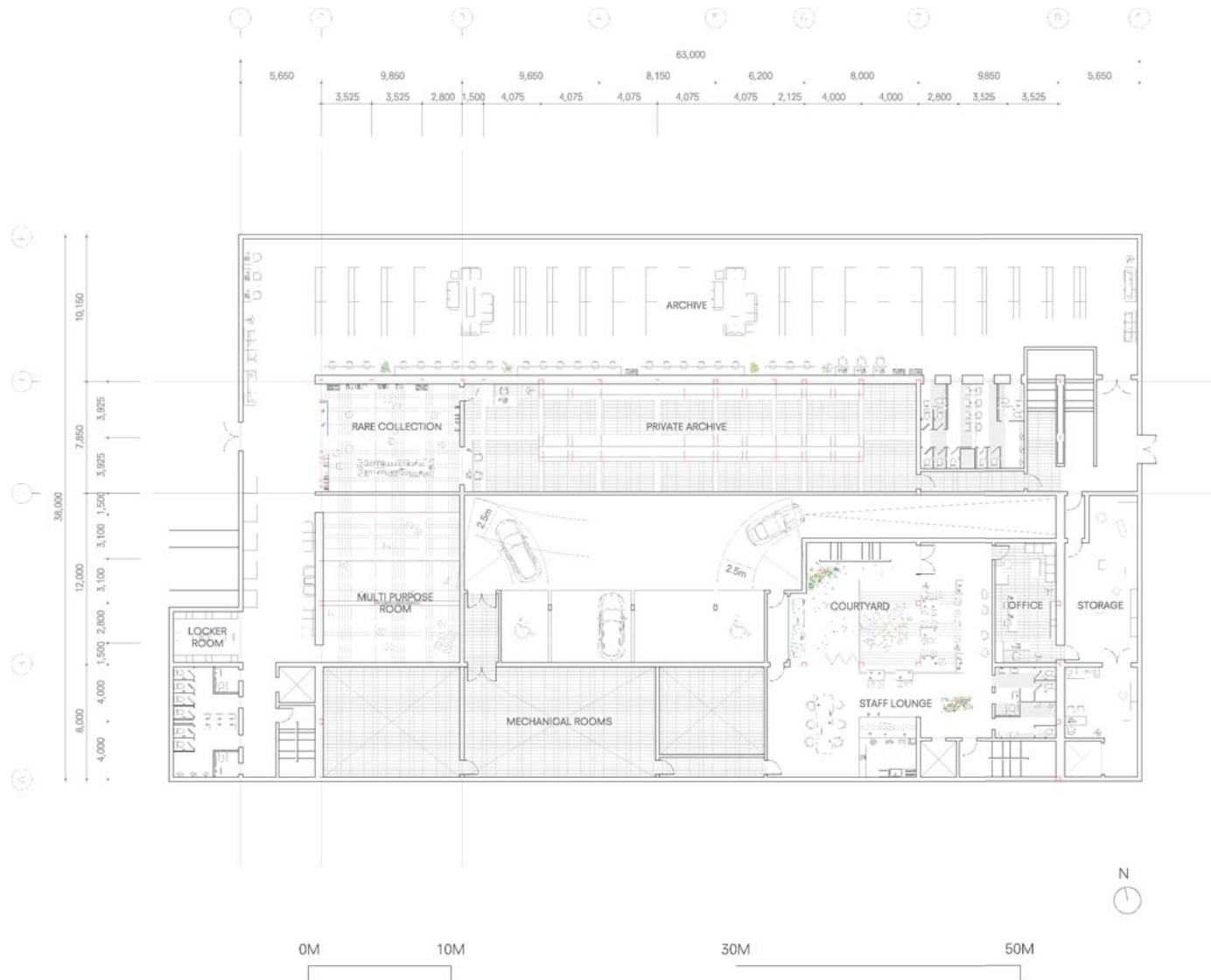


Implementation

URBAN IMPLEMENTATION 1:500

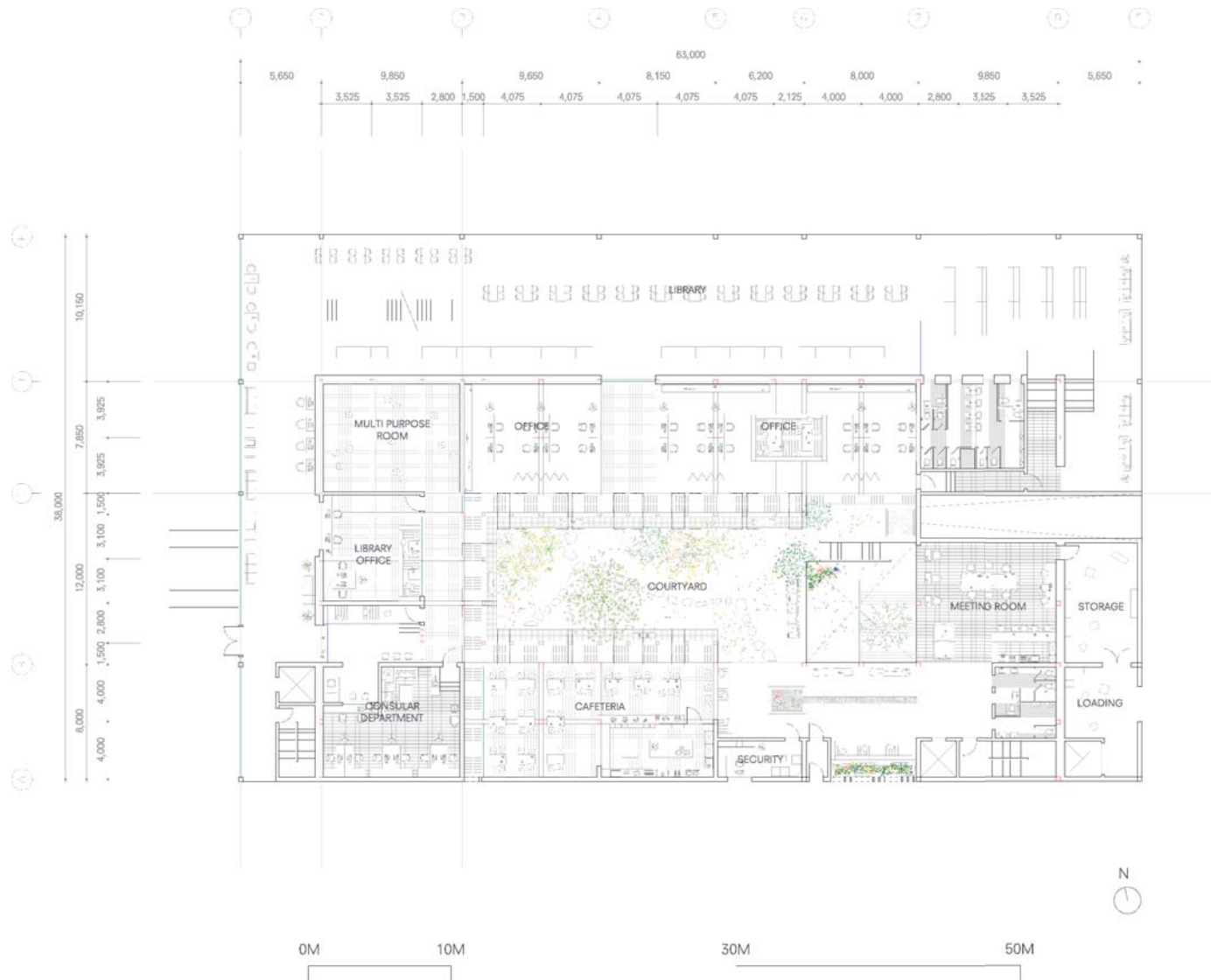


BASEMENT FLOOR 1:200



Implementation

GROUND FLOOR 1:200

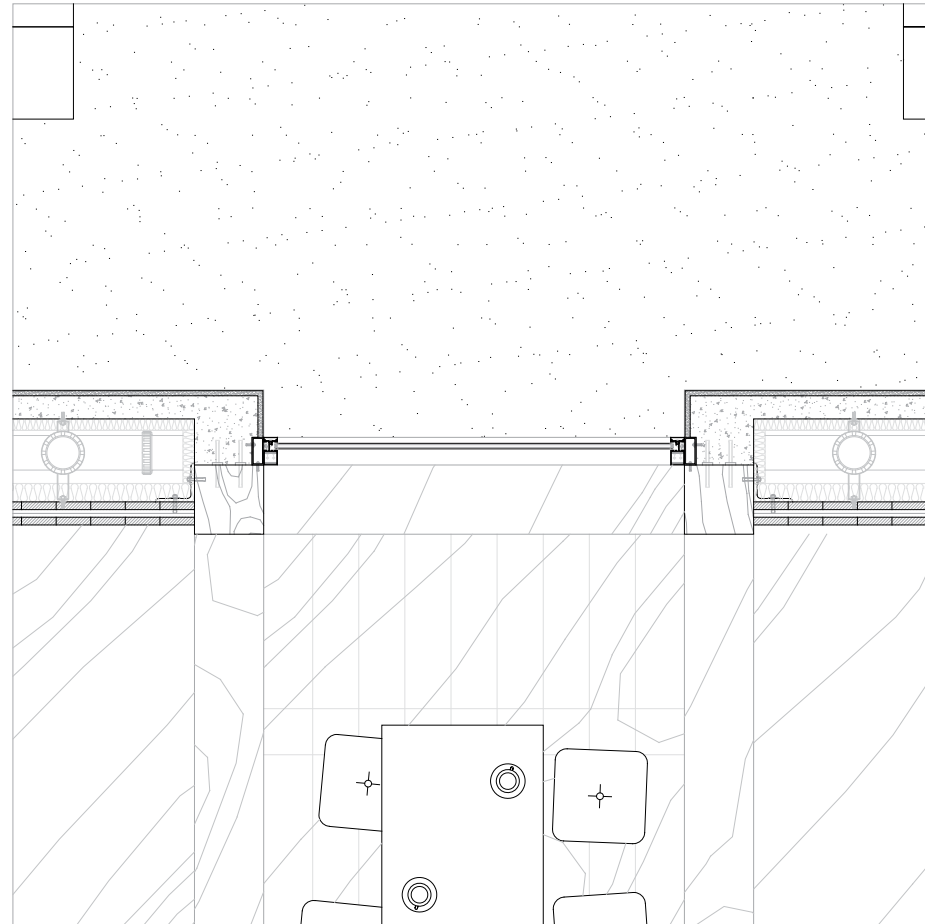


Implementation
1ST FLOOR 1:200

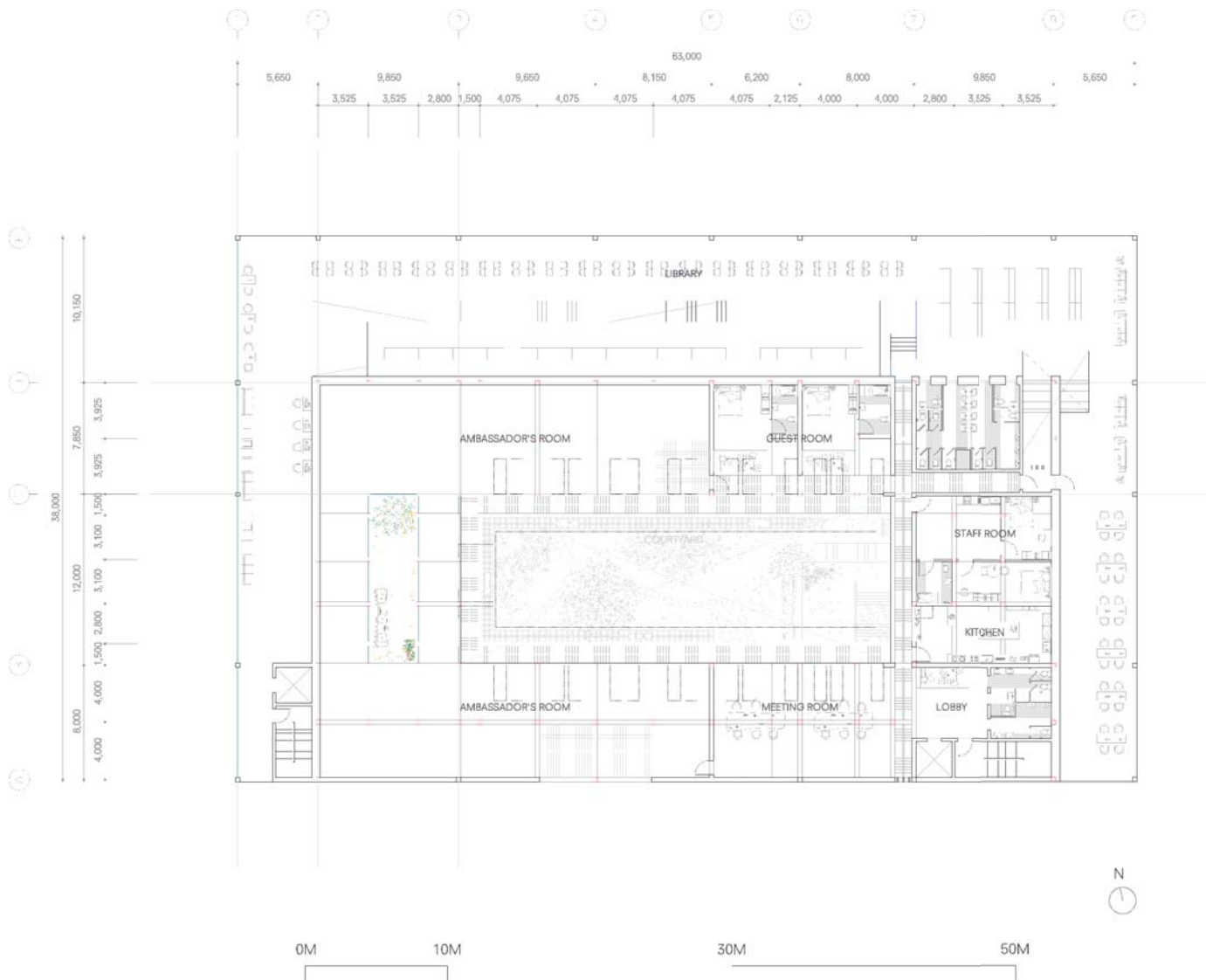


Implementation

ENVELOPE FRAGMENT 1:20

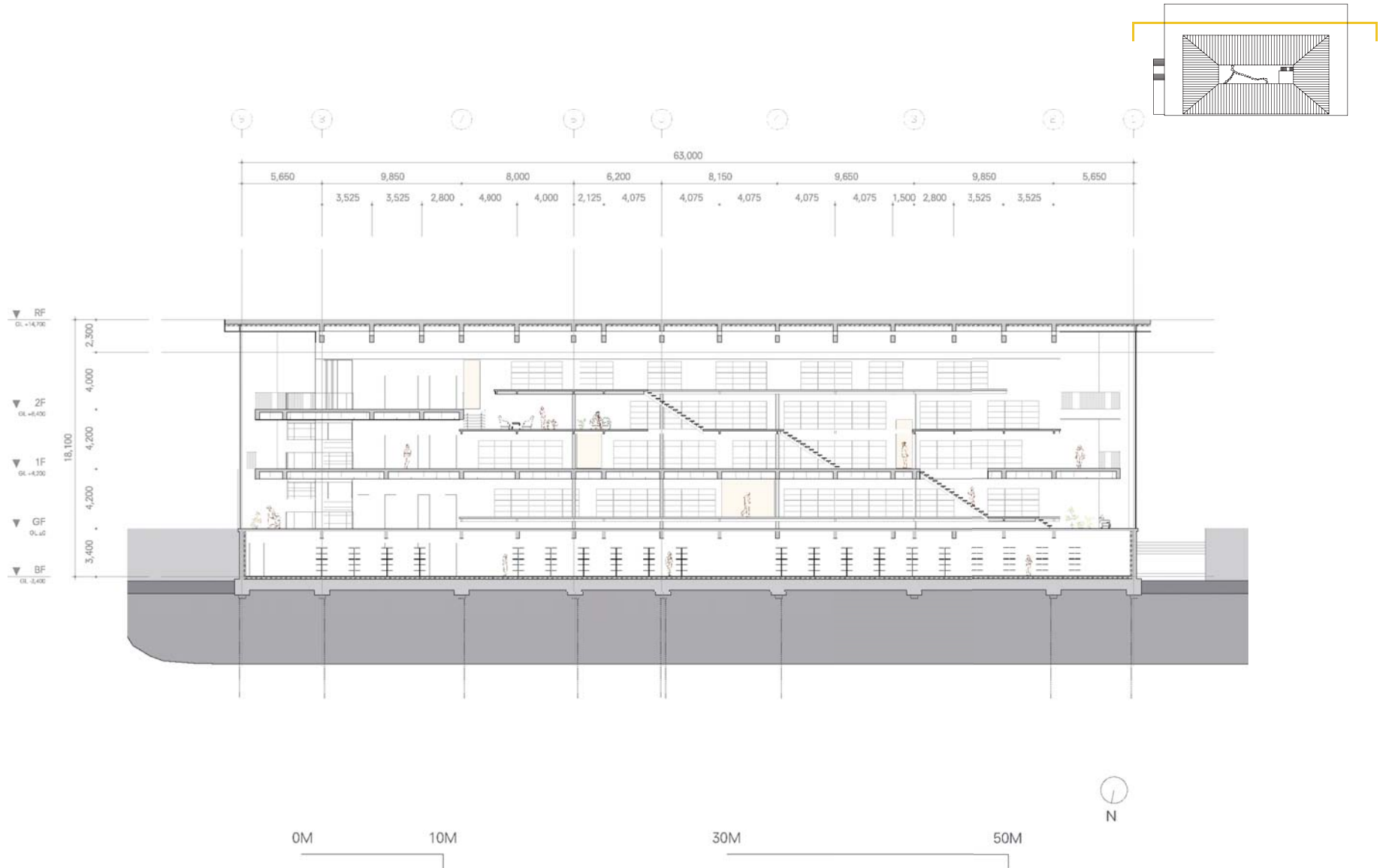


Implementation
2ND FLOOR 1:200



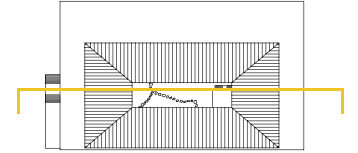
Implementation

LONGITUDINAL SECTION 1:200



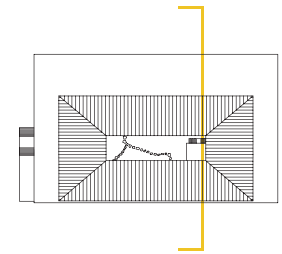
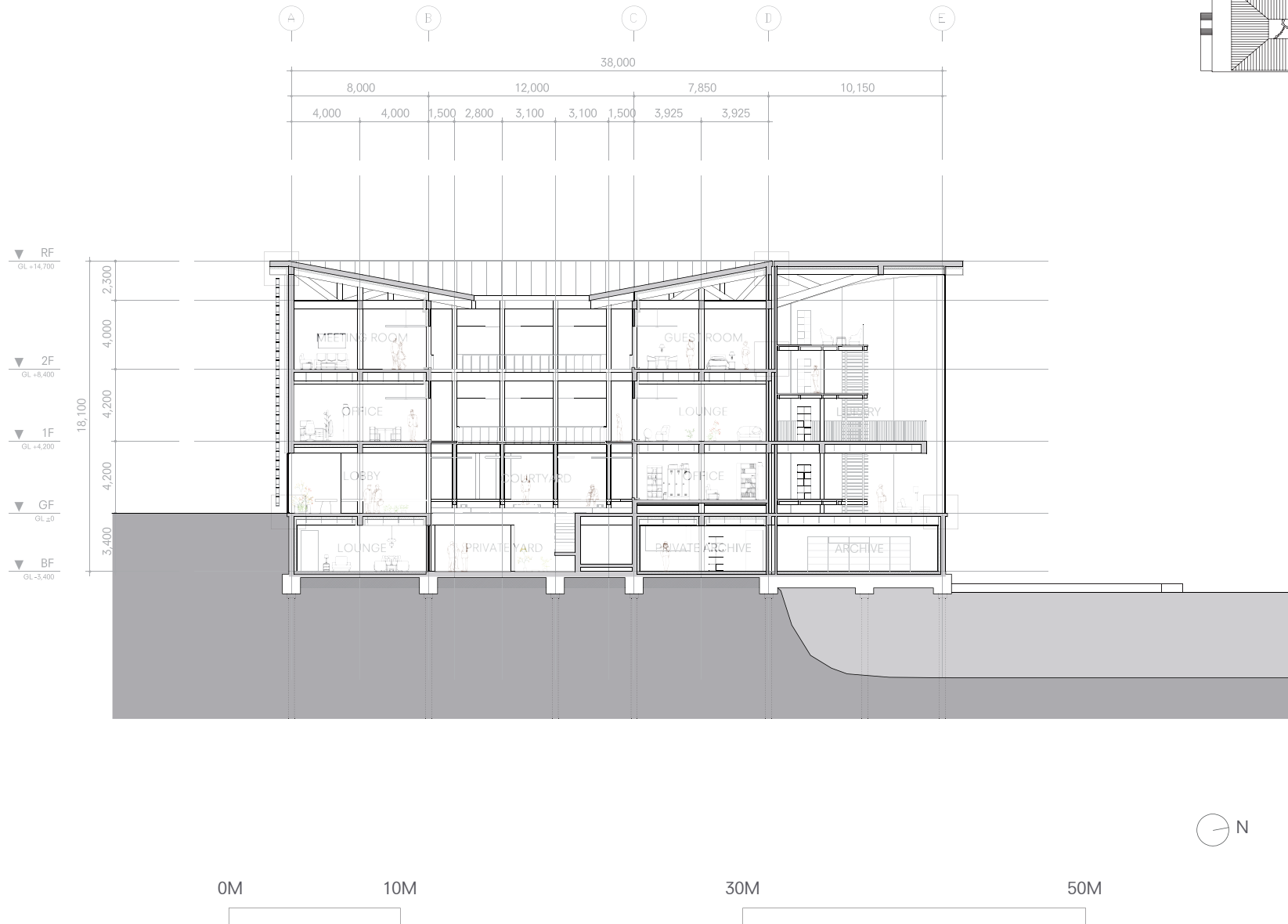
Implementation

PERSPECTIVE SECTION (INTERIOR FRAGMENT)



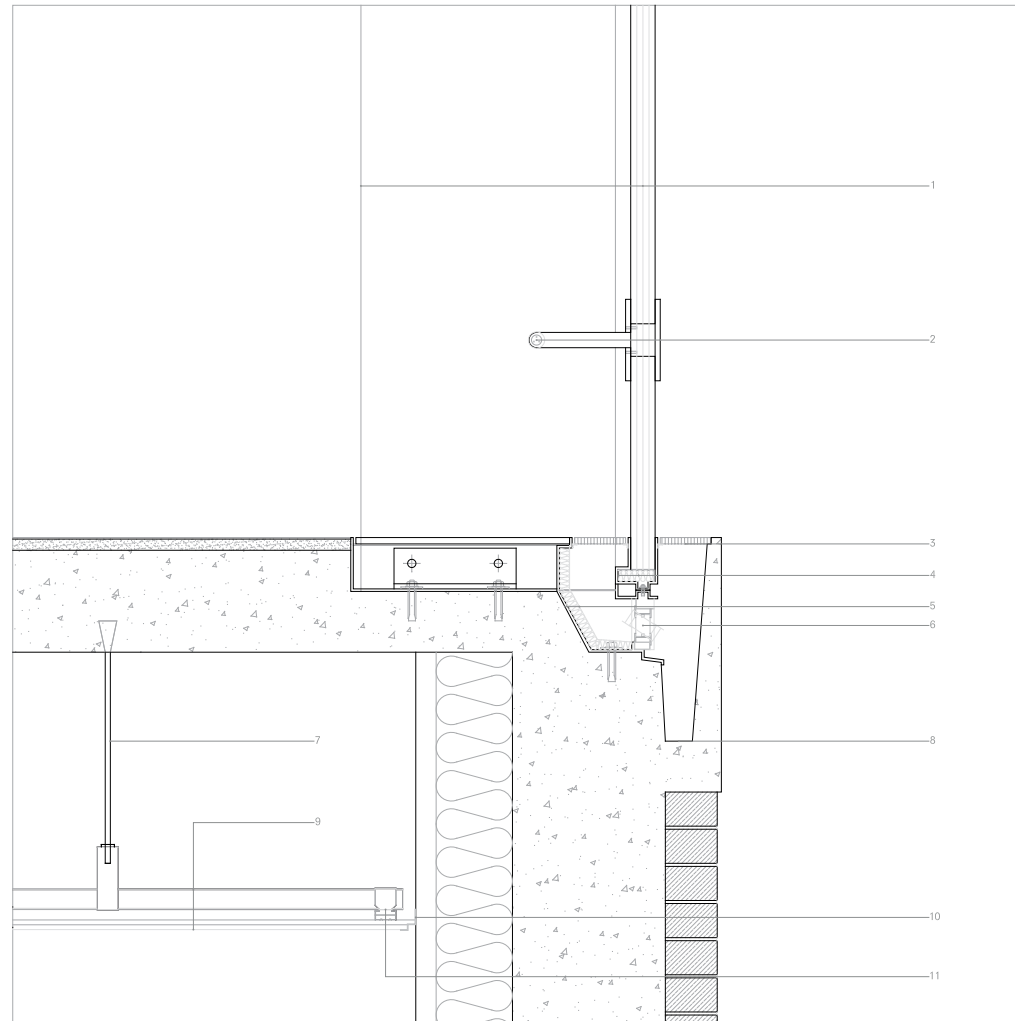
Implementation

CROSS SECTION 1:200



Implementation

GLASS FACADE 1:5



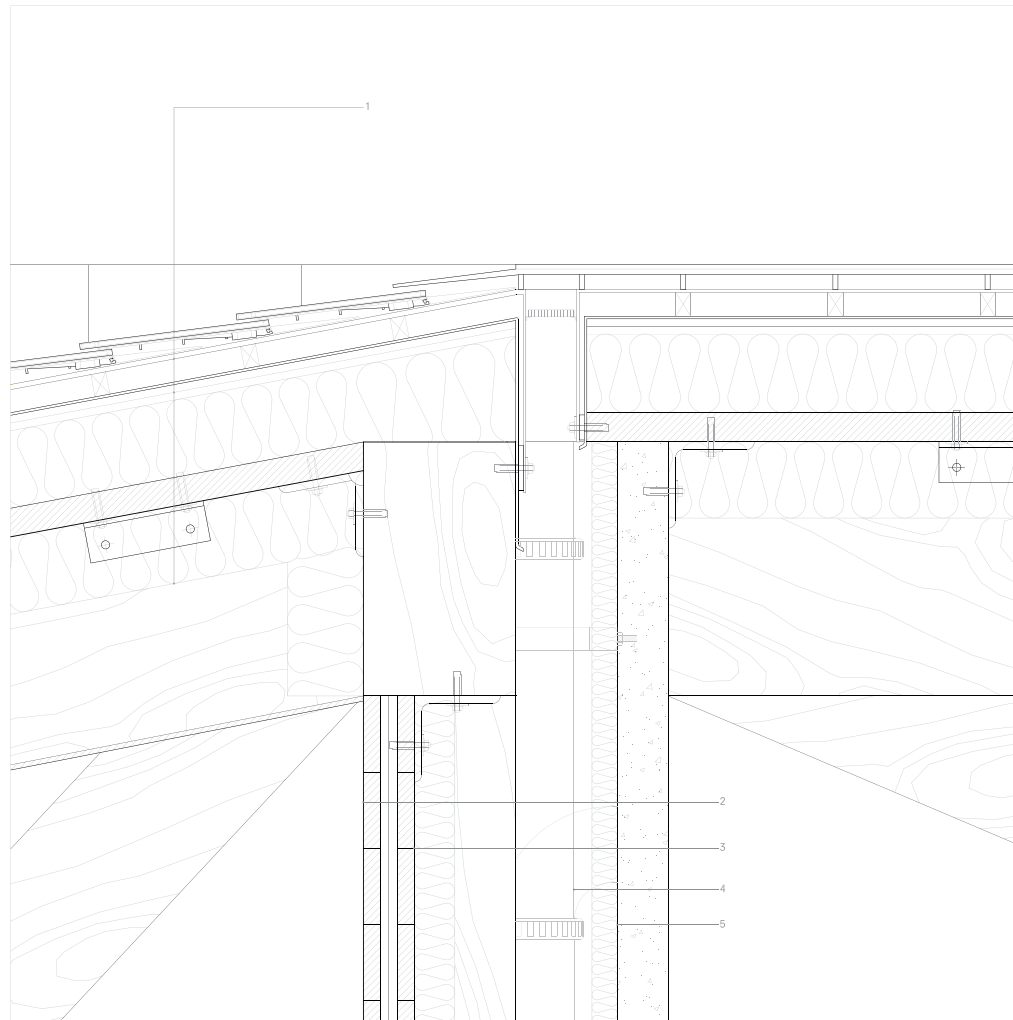
- 1 5-PLY 12MM HEAT-STRENGTHENED GLASS FIN
5-PLY 12MM INSULATING GLASS PANES
- 2 STAINLESS STEEL BRACKETS
- 3 COVER GRILLE HEATING STAINLESS STEEL
- 4 INSULATED STAINLESS STEEL PANEL
- 5 INSULATED STAINLESS STEEL VENTILATION BLADES
- 6 VENTILATION DUCT
- 7 $\phi 9$ HANGER BOLT
- 8 PRECAST CONCRETE DRAINAGE
- 9 CARRYING CHANNEL 38*12*T1. 2@909
- 10 M-BAR CLIP
- 11 AL MOLDING

0 0.1 0.5 1M



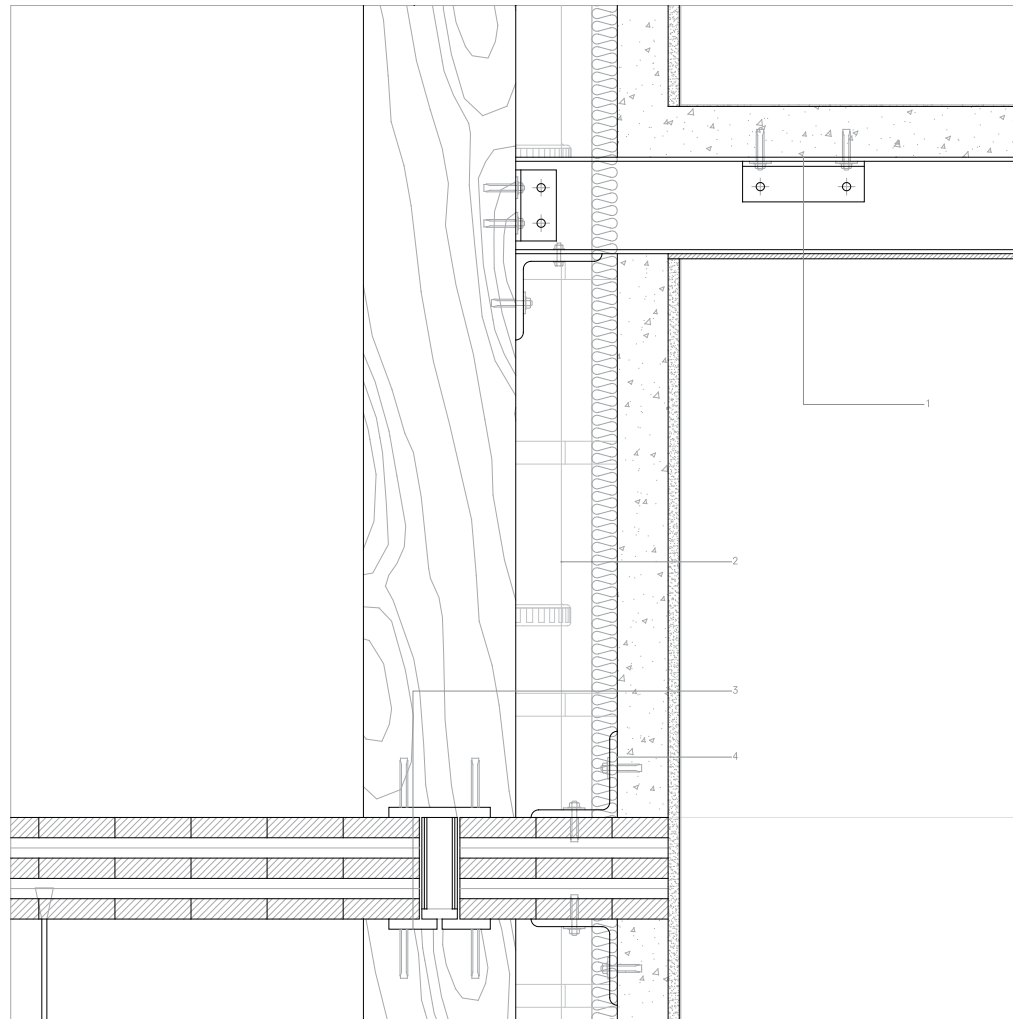
Implementation

ROOF 1:5



Implementation

VENTILATION WALL 1:5

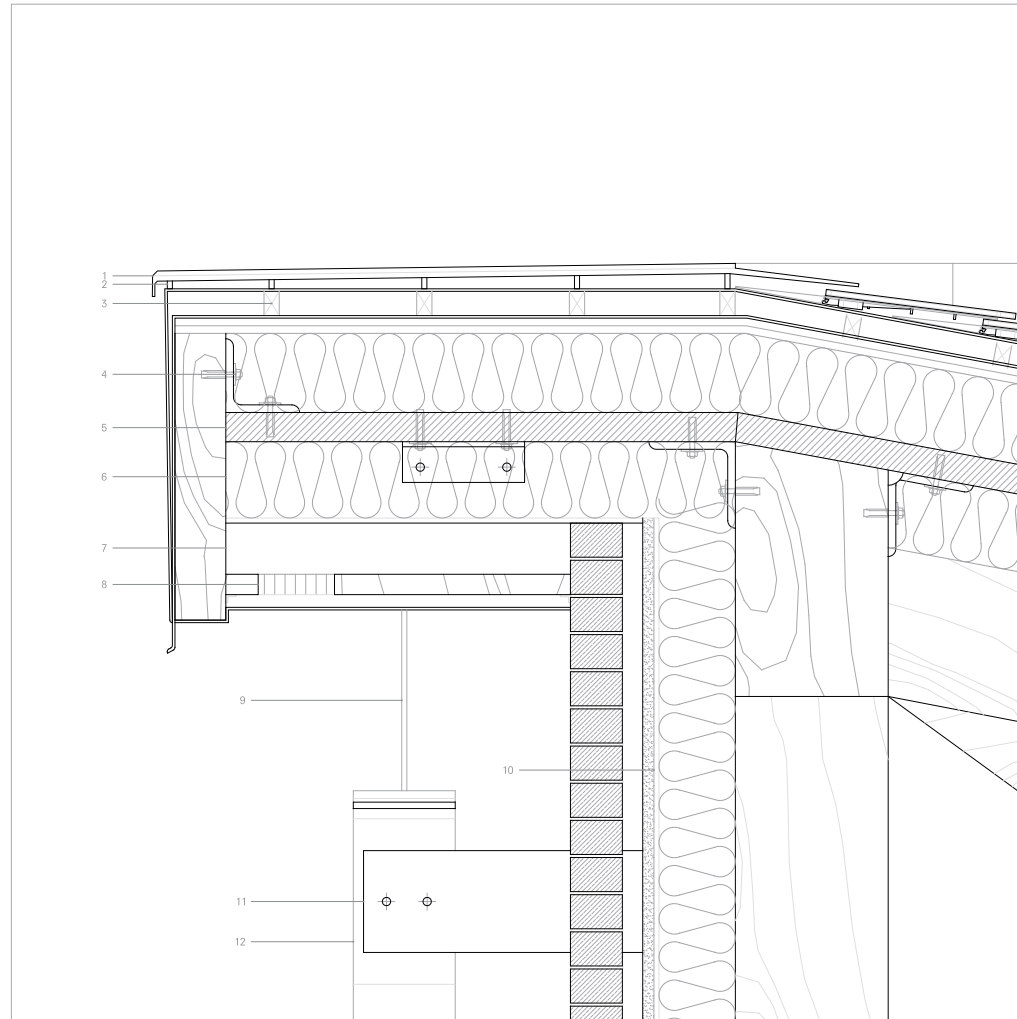


- 1 STEEL BEAM
ANCHOR BOLT
- 2 VENTILATION PIPE
THK 50 XPS
THK 100 PLAIN CONCRETE
THK 22 DUBBING MORTAR
- 3 STEEL CONNECTION
- 4 CLADDING ANCHOR



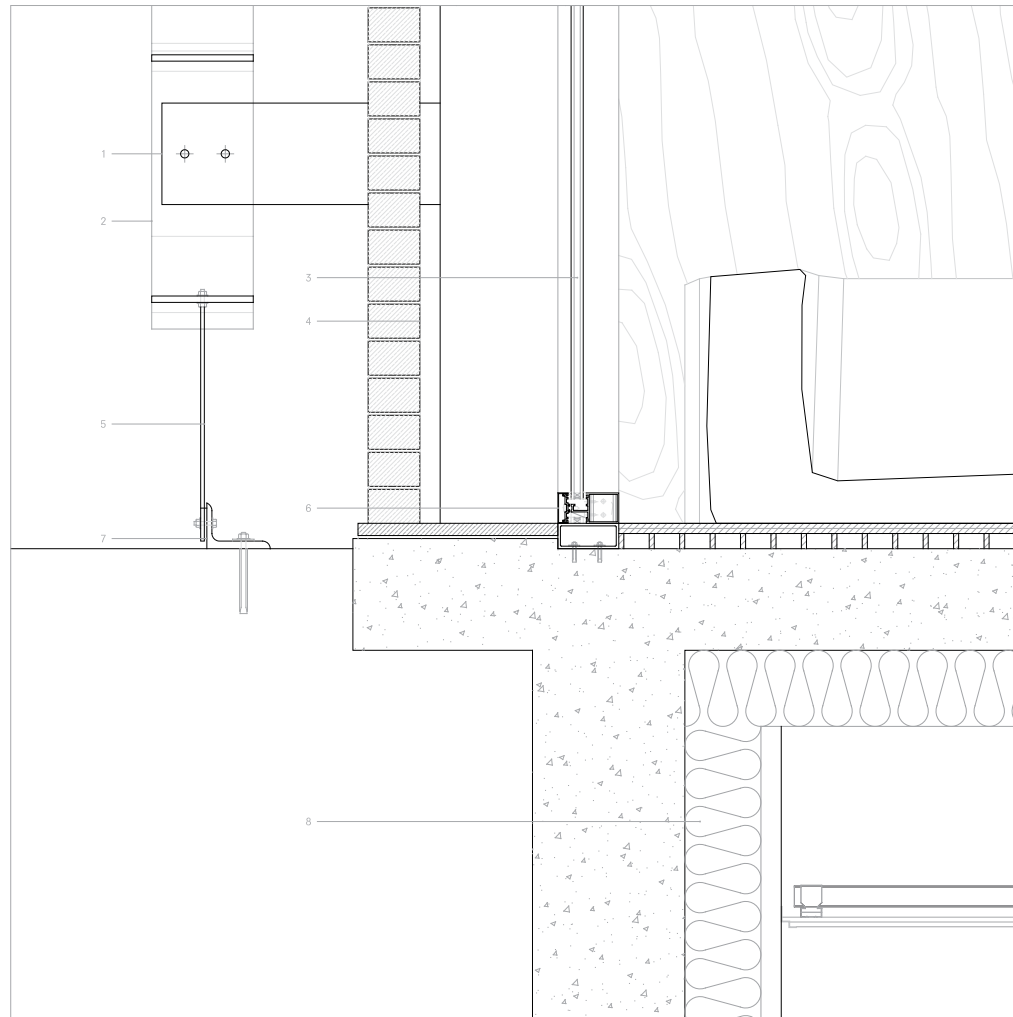
Implementation

ROOF 1:5



Implementation

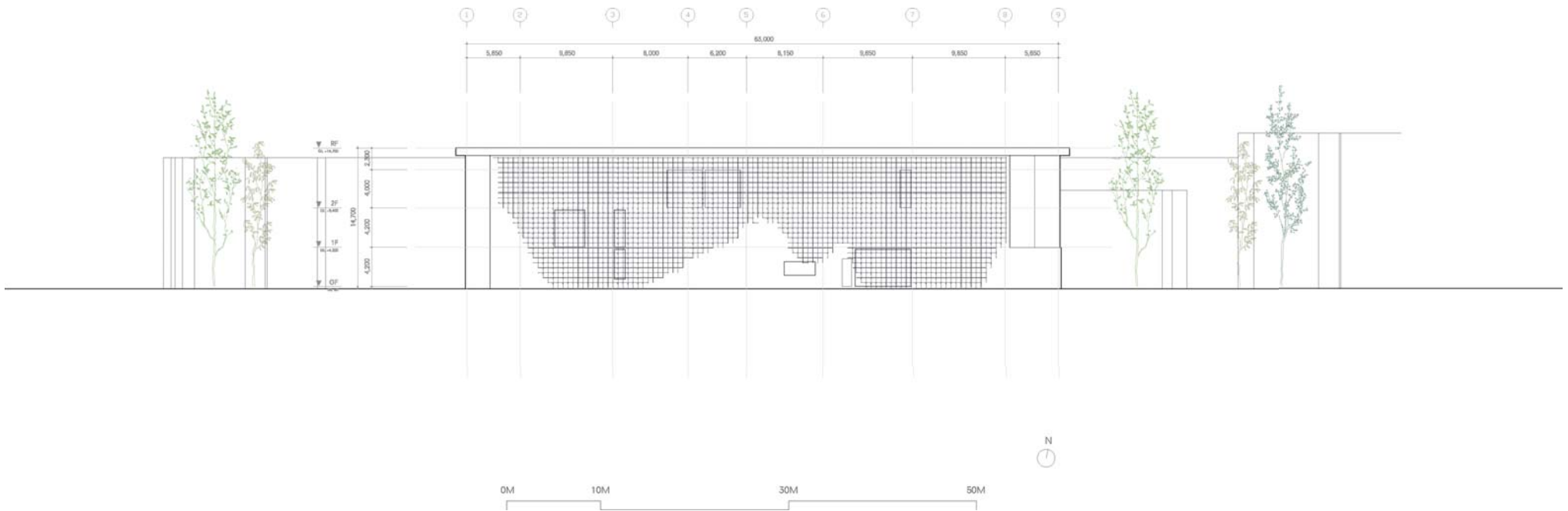
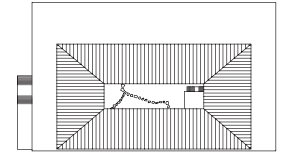
GROUND LEVEL 1:5



- 1 METAL SCREEN BRACKET
- 2 L-SHAPED EXTRUDED STAINLESS STEEL UNITS
- 3 5-PLY 12MM INSULATING GLASS PANES
- 4 BRICKWORK
- 5 HANGER BOLT
- 6 MULLION CAP
- 7 CLADDING ANCHOR BOLT



Implementation
ELEVATION 1:500



Implementation

FACADE



Image Source: Chaewon Yoo 2021



Implementation

EMBASSY



Image Source: Chaewon Yoo 2021



Implementation

COURTYARD (EMBASSY)



Image Source: Chaewon Yoo 2021



Implementation

ENTRANCE (LIBRARY)



Image Source: Chaewon Yoo 2021

Migration of Atmosphere



Hotel New York

22

Implementation

LIBRARY



Image Source: Chaewon Yoo 2021



Implementation

CHA GYEONG (FROM LIBRARY SIDE 1)



Image Source: Chaewon Yoo 2021



Implementation

CHA GYEONG (FROM LIBRARY SIDE 2)



Image Source: Chaewon Yoo 2021



Implementation

CHA GYEONG (FROM EMBASSY SIDE)



Image Source: Chaewon Yoo 2021



Implementation

LIBRARY 2

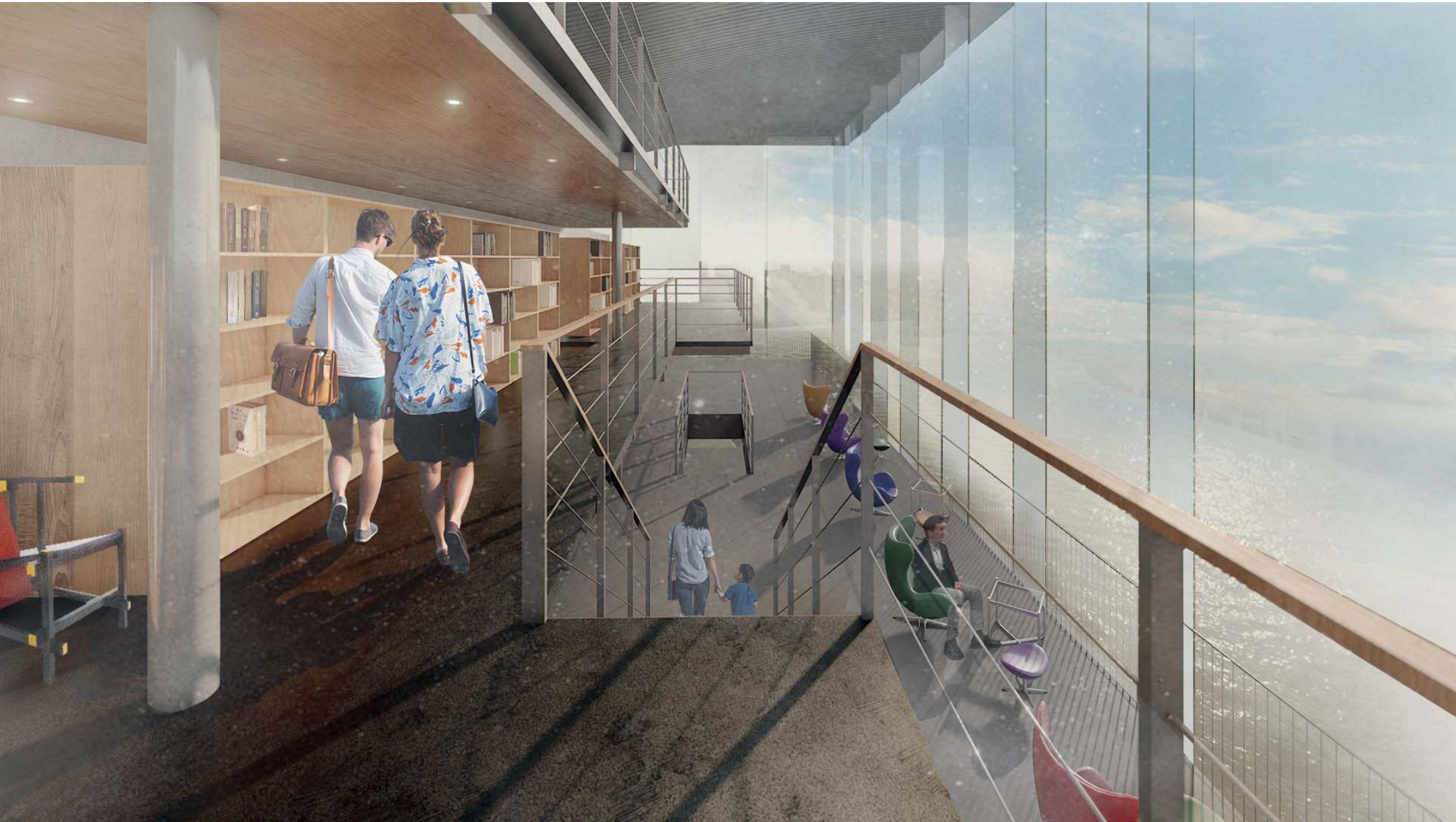


Image Source: Chaewon Yoo 2021



Implementation

VIEW 1

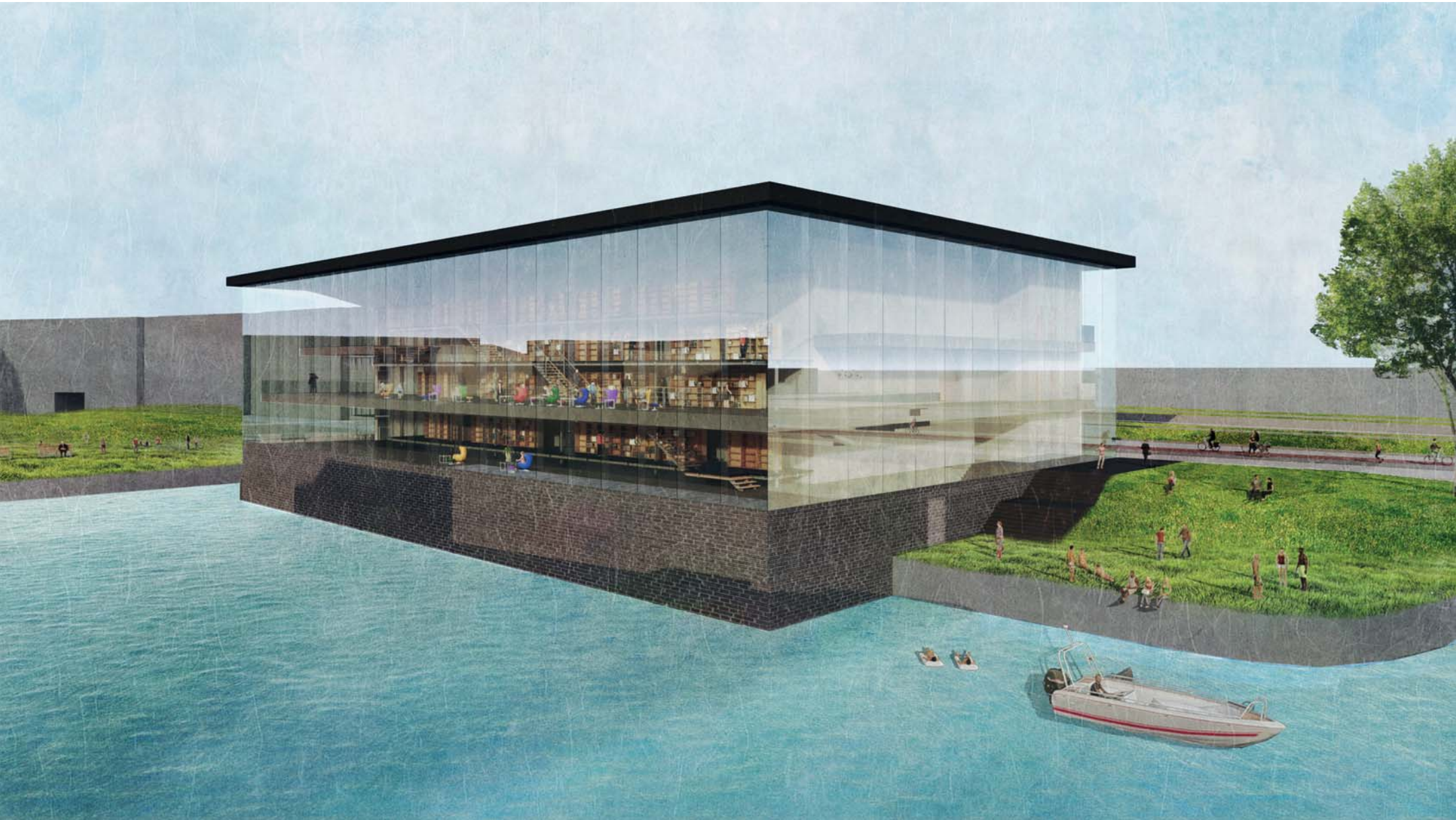


Image Source: Chaewon Yoo 2021



Implementation

VIEW 2



Image Source: Chaewon Yoo 2021

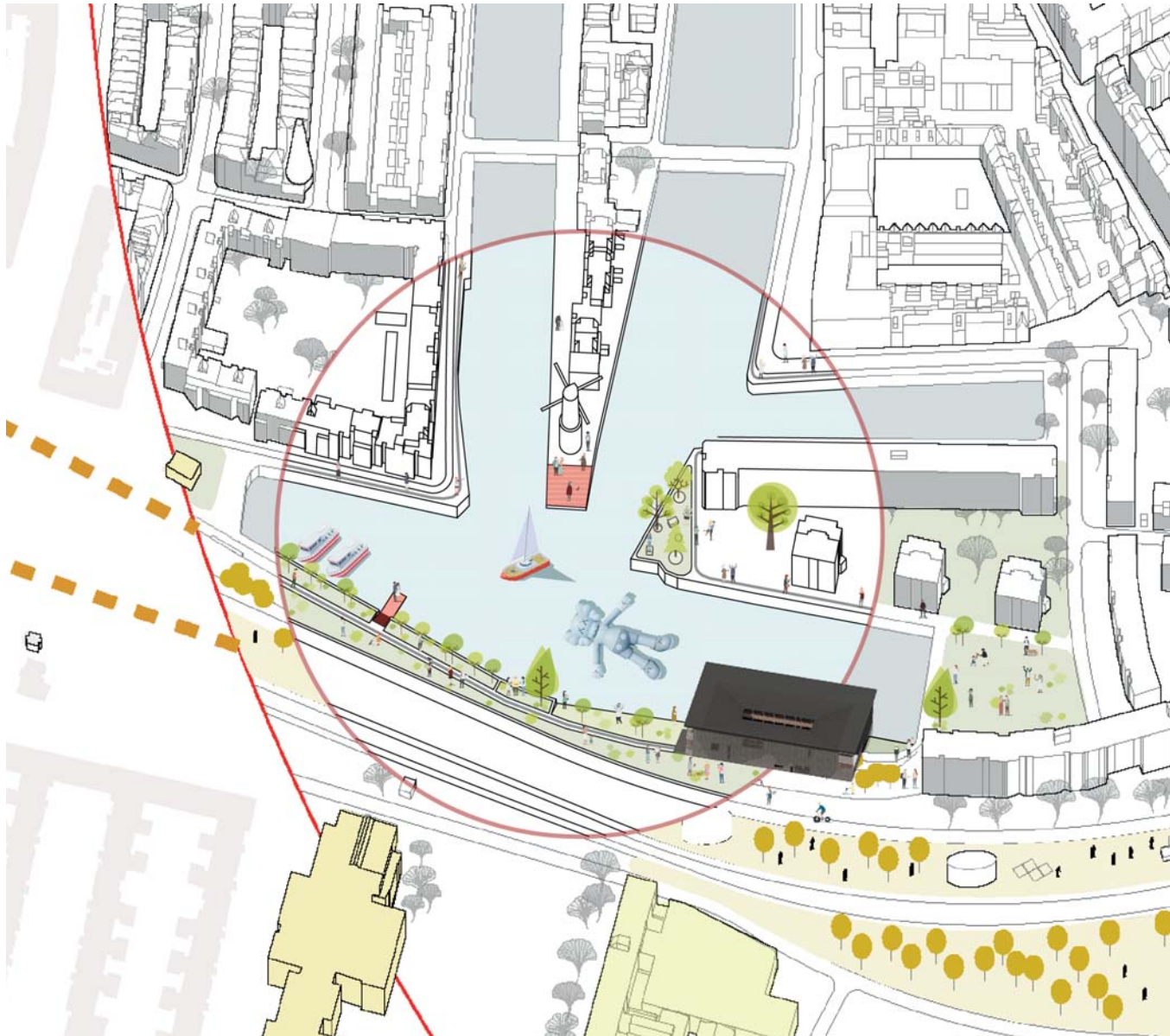


VIEW 3



Conclusion

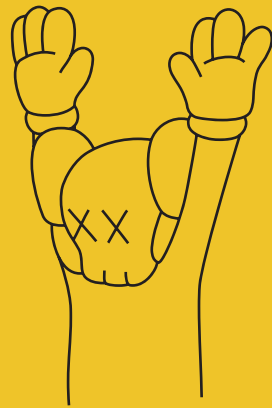
AXON



Conclusion

GROUP AXON





THANK YOU.



complex projects