

COMPLEX PROJECTS
P5 DRAWING SET

Group 02 - City Centre: Leisure

Sebastiaan de Boer

15-06-2022

group site plan



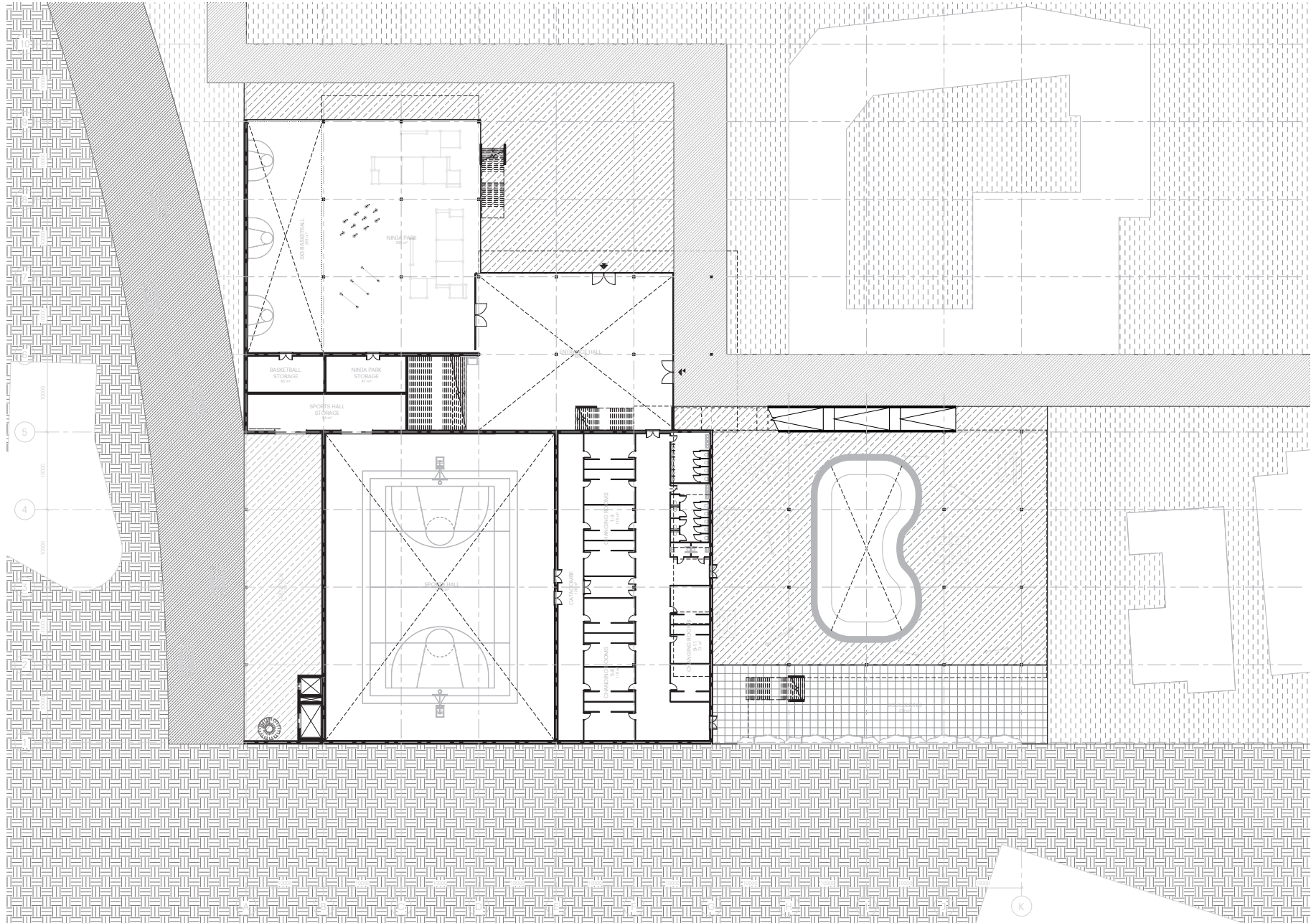
drawn scale 1:10.000
rescaled to fit page

site plan



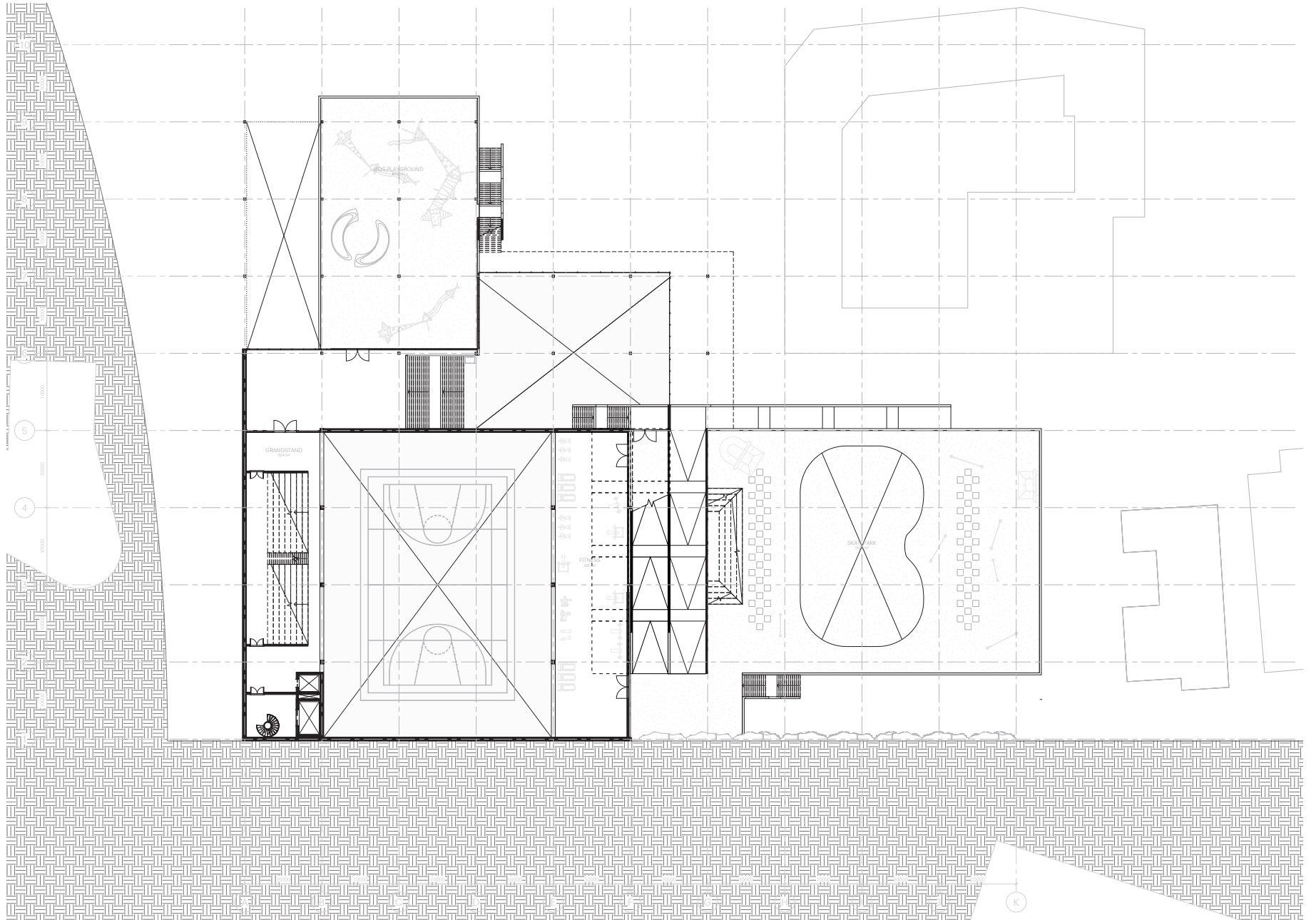
drawn scale 1:1000
rescaled to fit page

floor plans
ground floor +0

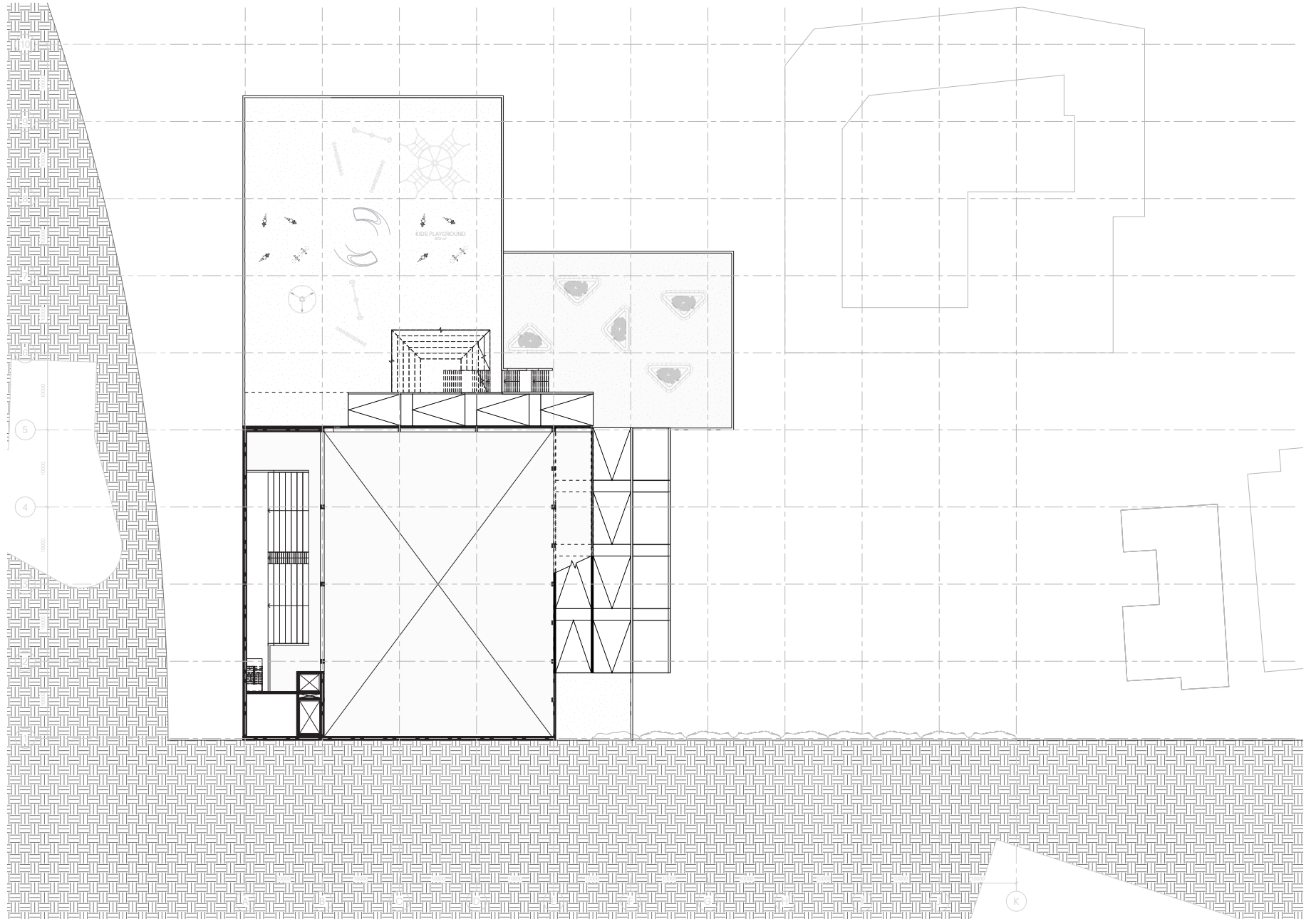


drawn scale 1:200
rescaled to fit page

floor plans
floor +4000

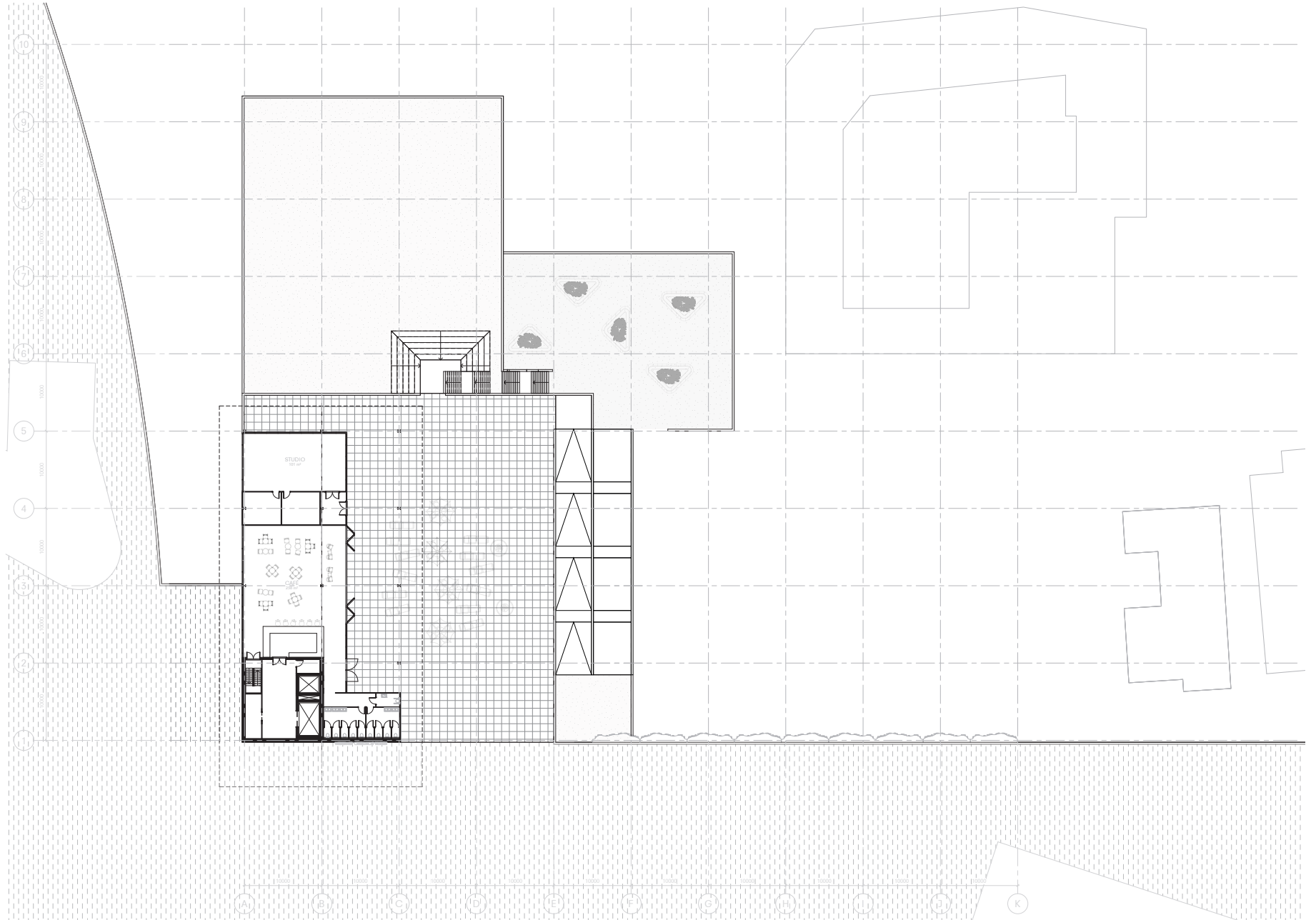


floor plans
floor +10000



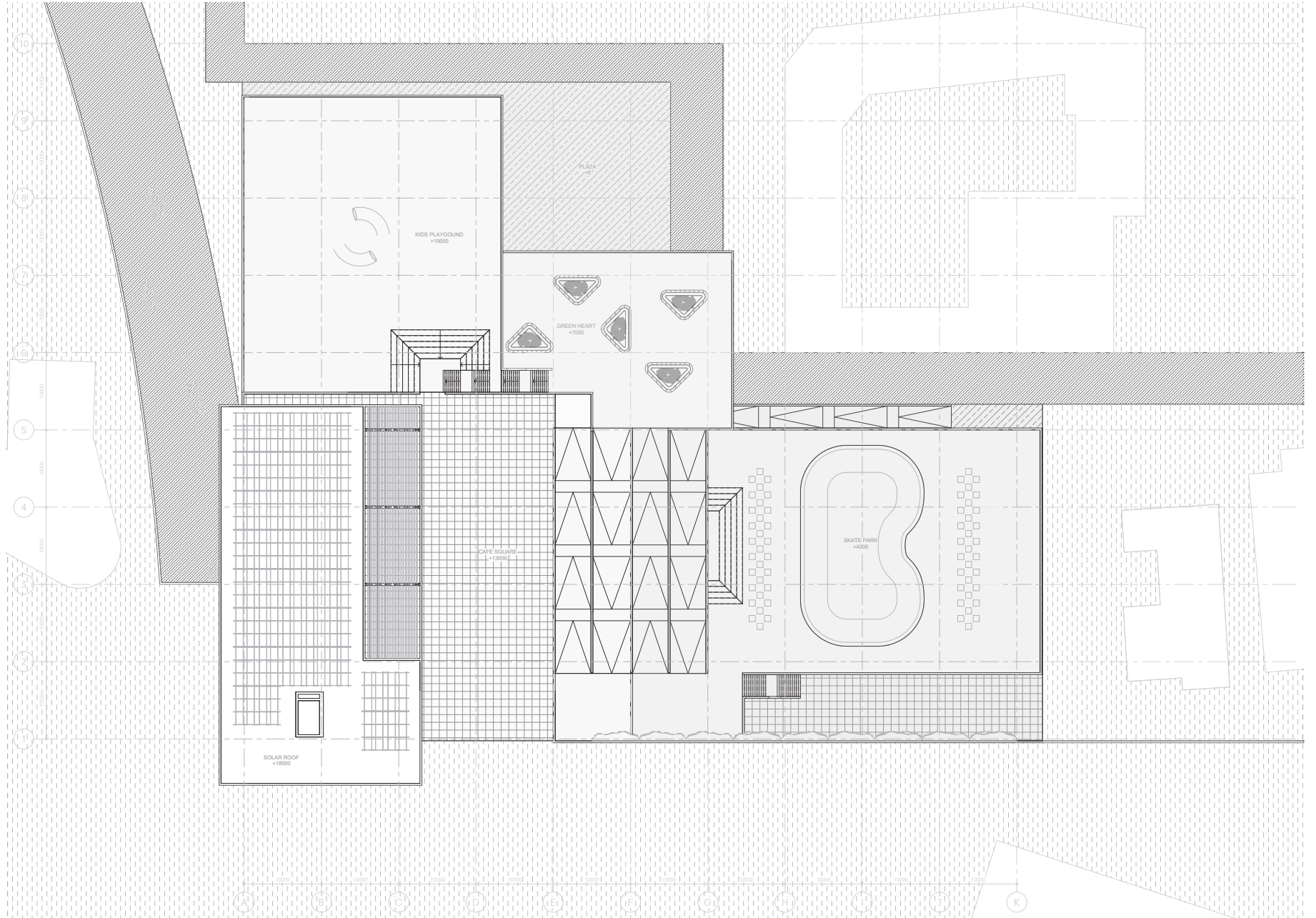
drawn scale 1:200
rescaled to fit page

floor plans
floor +13000



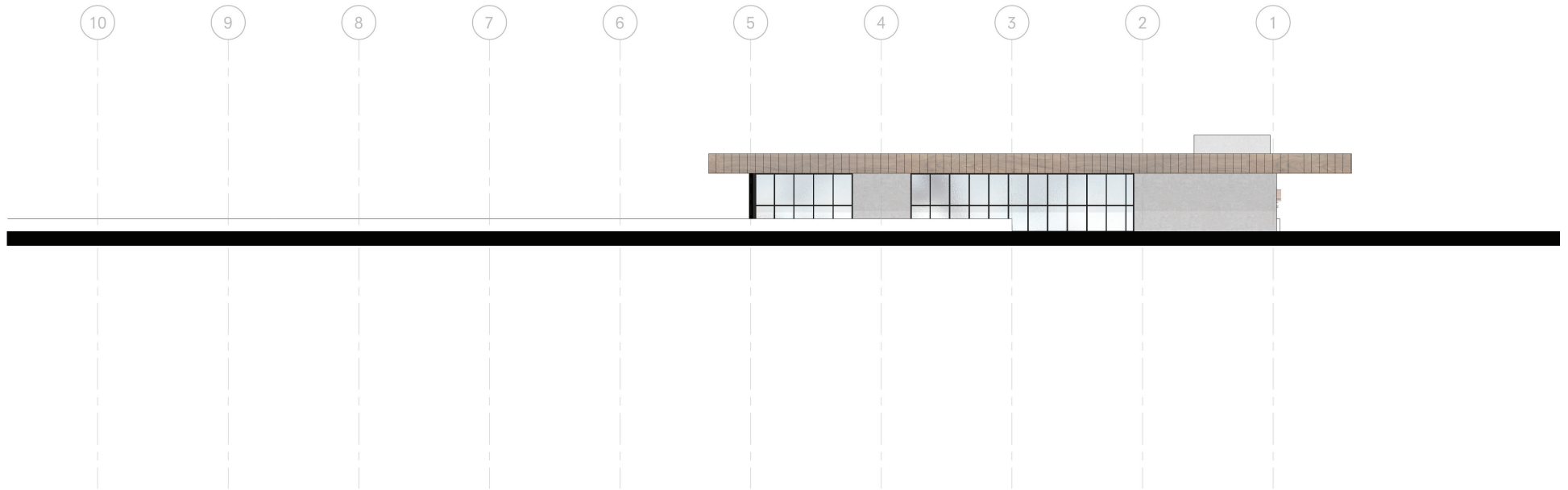
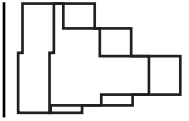
drawn scale 1:200
rescaled to fit page

floor plans
roof



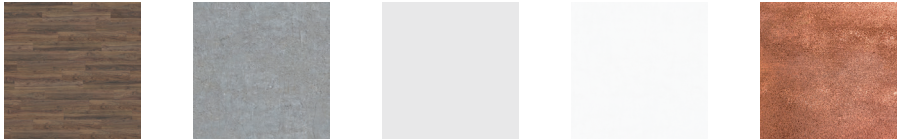
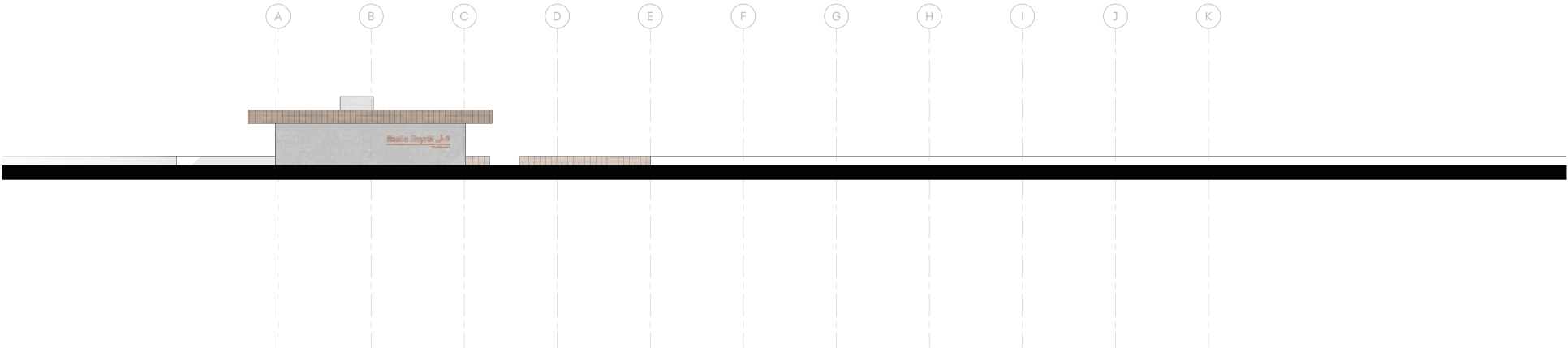
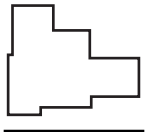
drawn scale 1:200
rescaled to fit page

elevations
west elevation



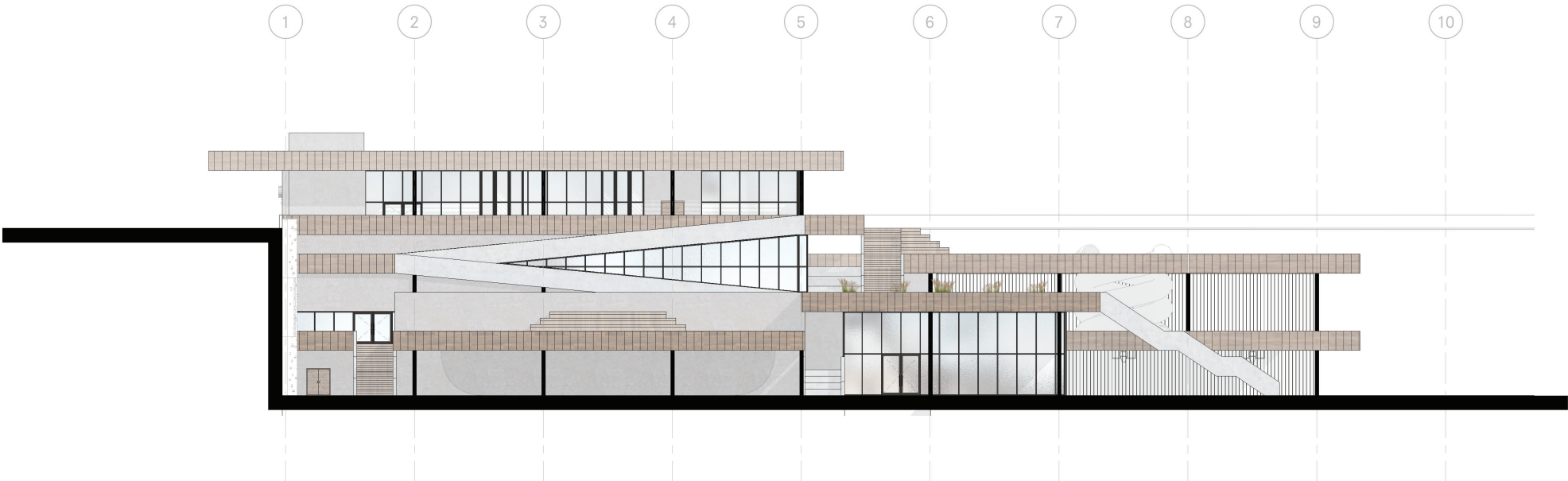
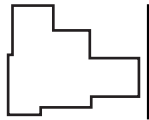
drawn scale 1:200
rescaled to fit page

elevations
south elevation



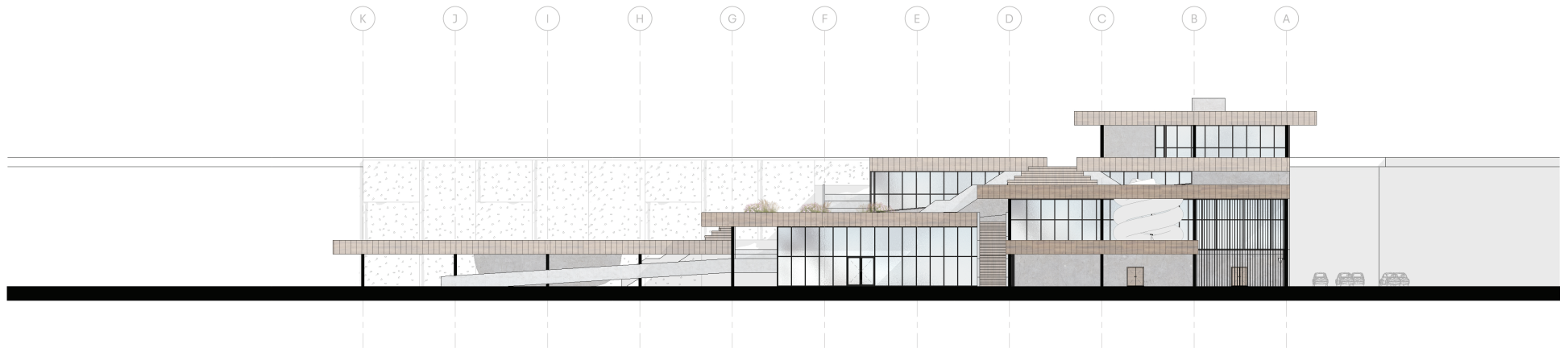
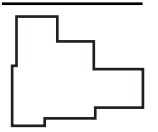
drawn scale 1:200
rescaled to fit page

elevations
east elevation



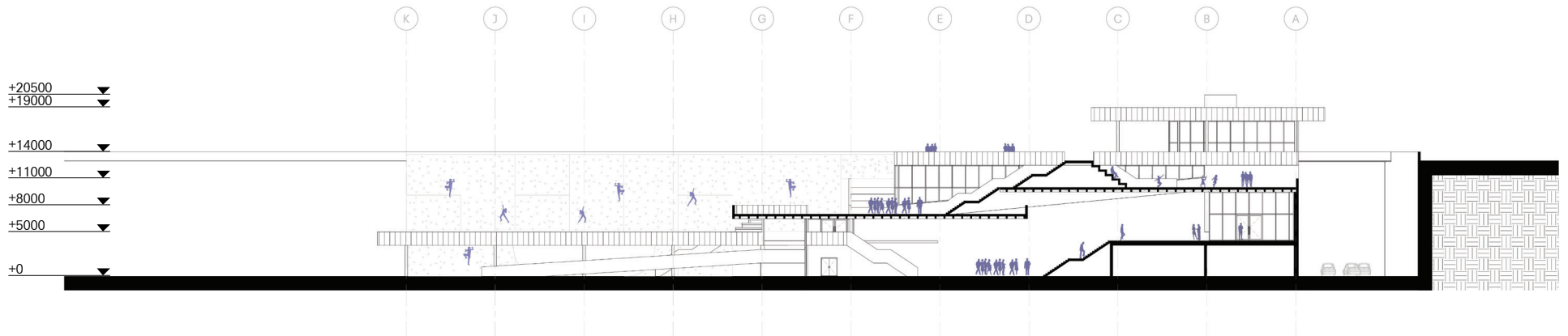
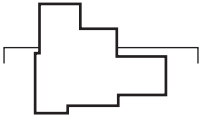
drawn scale 1:200
rescaled to fit page

elevations
north elevation



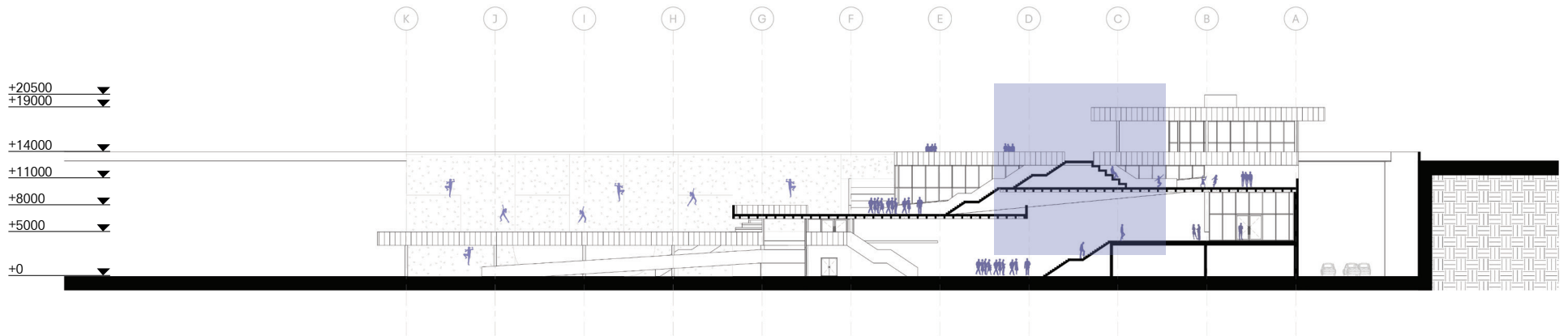
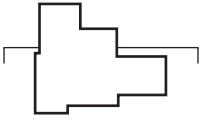
drawn scale 1:200
rescaled to fit page

cross sections
section aa'



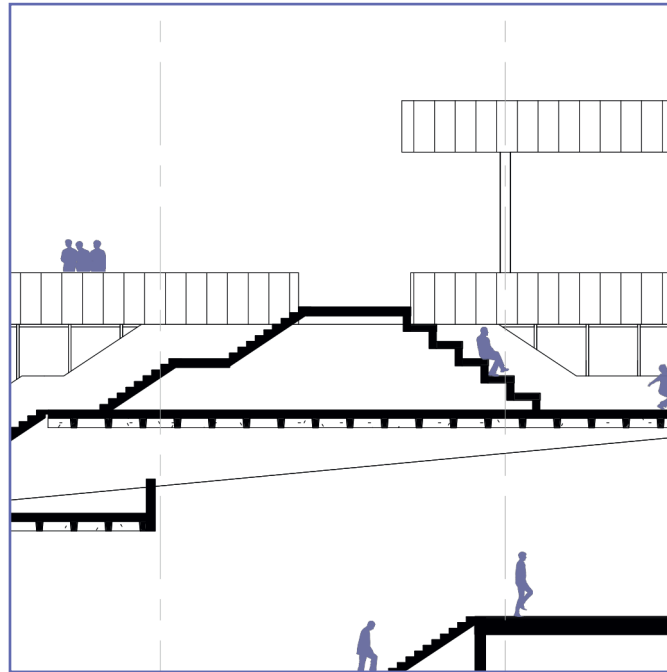
drawn scale 1:200
rescaled to fit page

cross sections
section aa'

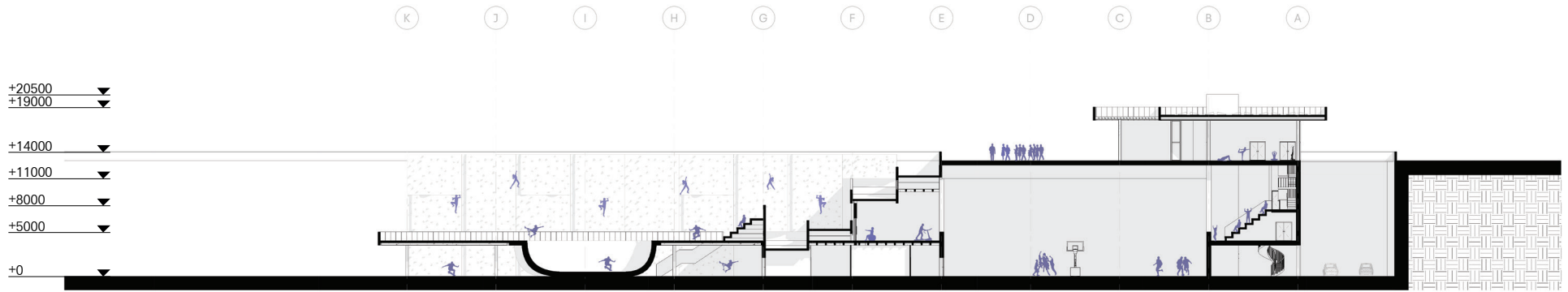
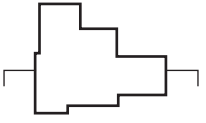


drawn scale 1:200
rescaled to fit page

cross sections
section aa'

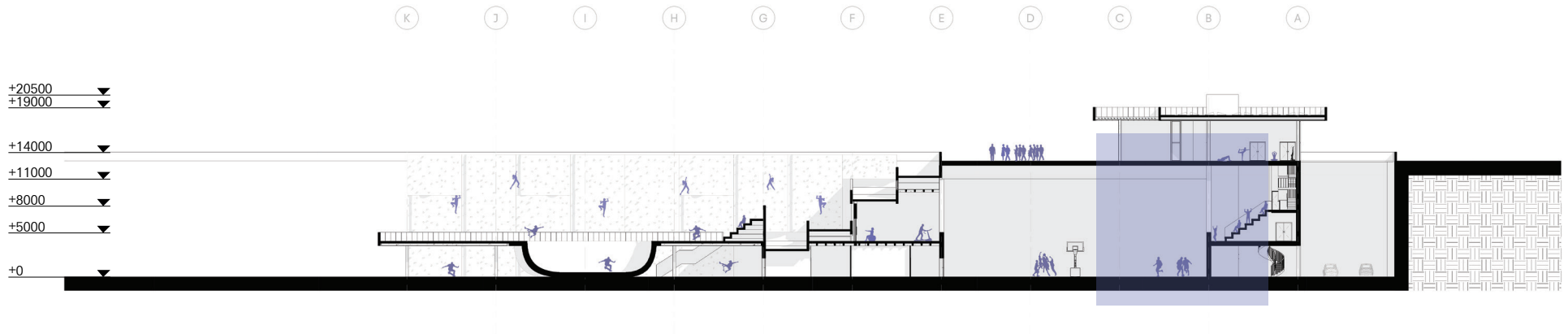
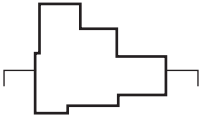


cross sections
section bb'



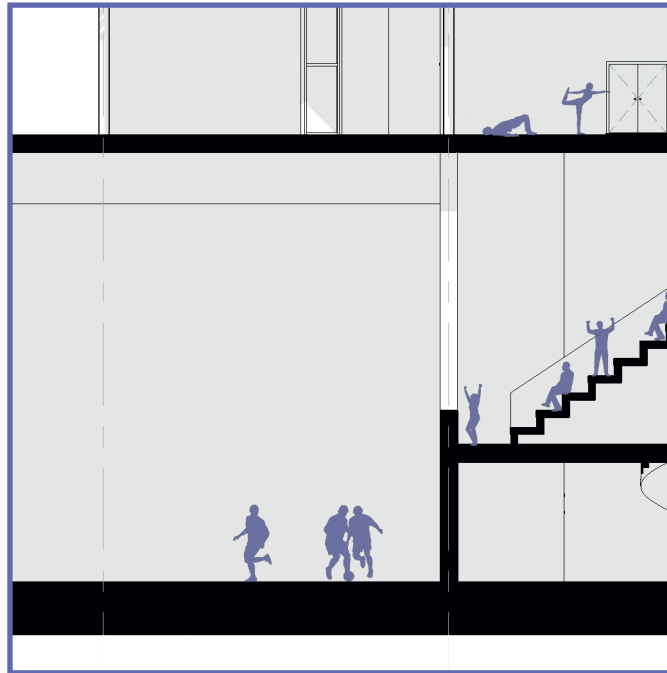
drawn scale 1:200
rescaled to fit page

cross sections
section bb'

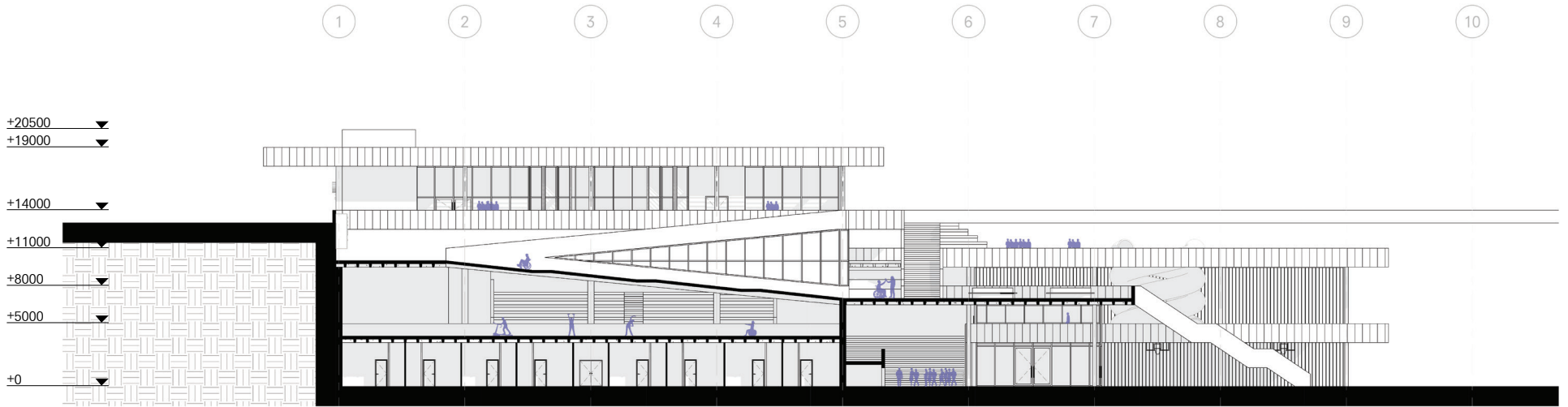
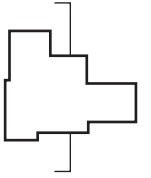


drawn scale 1:200
rescaled to fit page

cross sections
section bb'

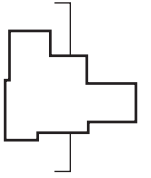


cross sections
section cc'

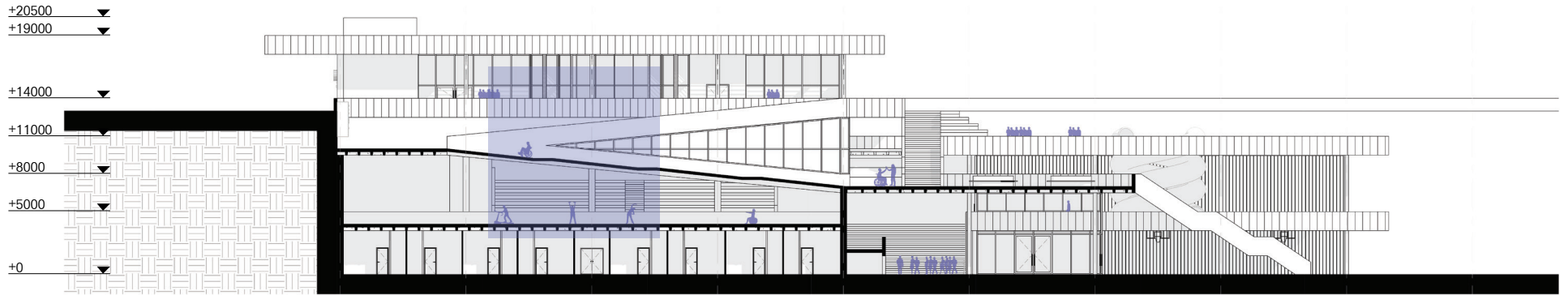


drawn scale 1:200
rescaled to fit page

cross sections
section cc'

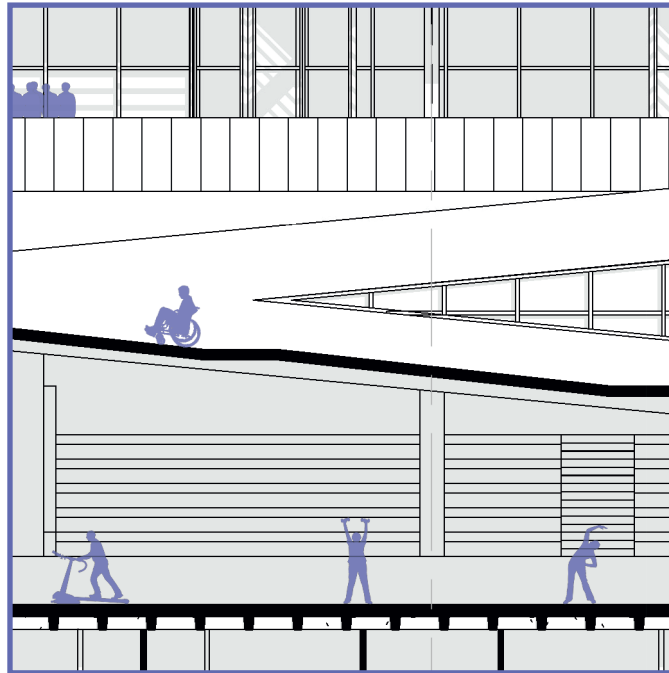


- 1
- 2
- 3
- 4
- 5
- 6
- 7
- 8
- 9
- 10

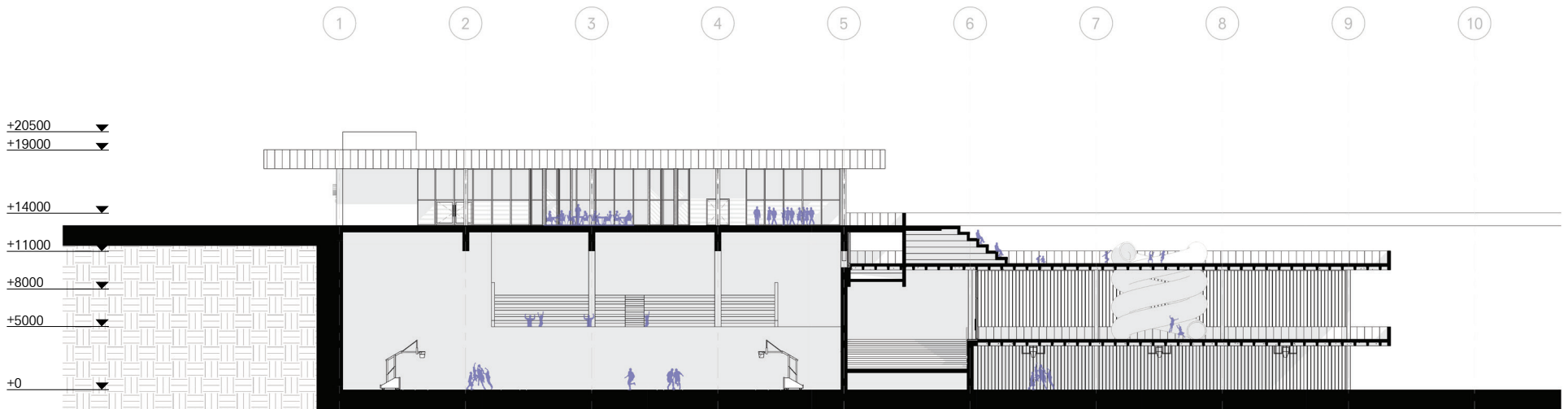
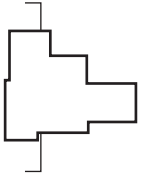


drawn scale 1:200
rescaled to fit page

cross sections
section cc'

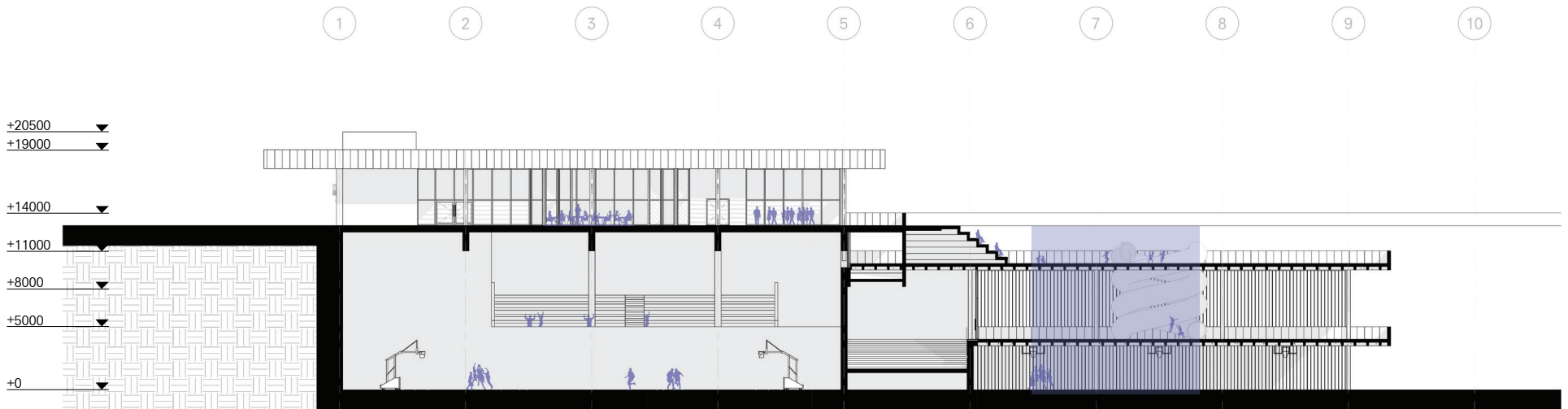
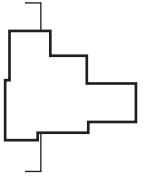


cross sections
section dd'



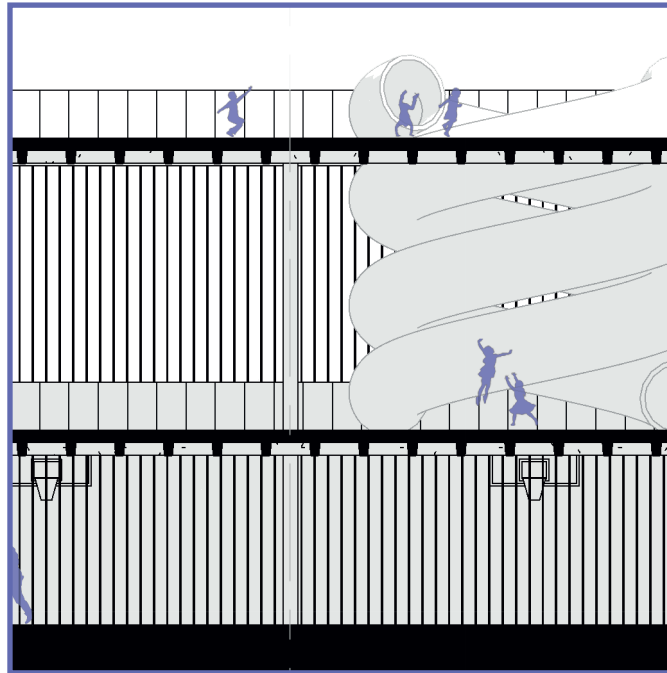
drawn scale 1:200
rescaled to fit page

cross sections
section dd'

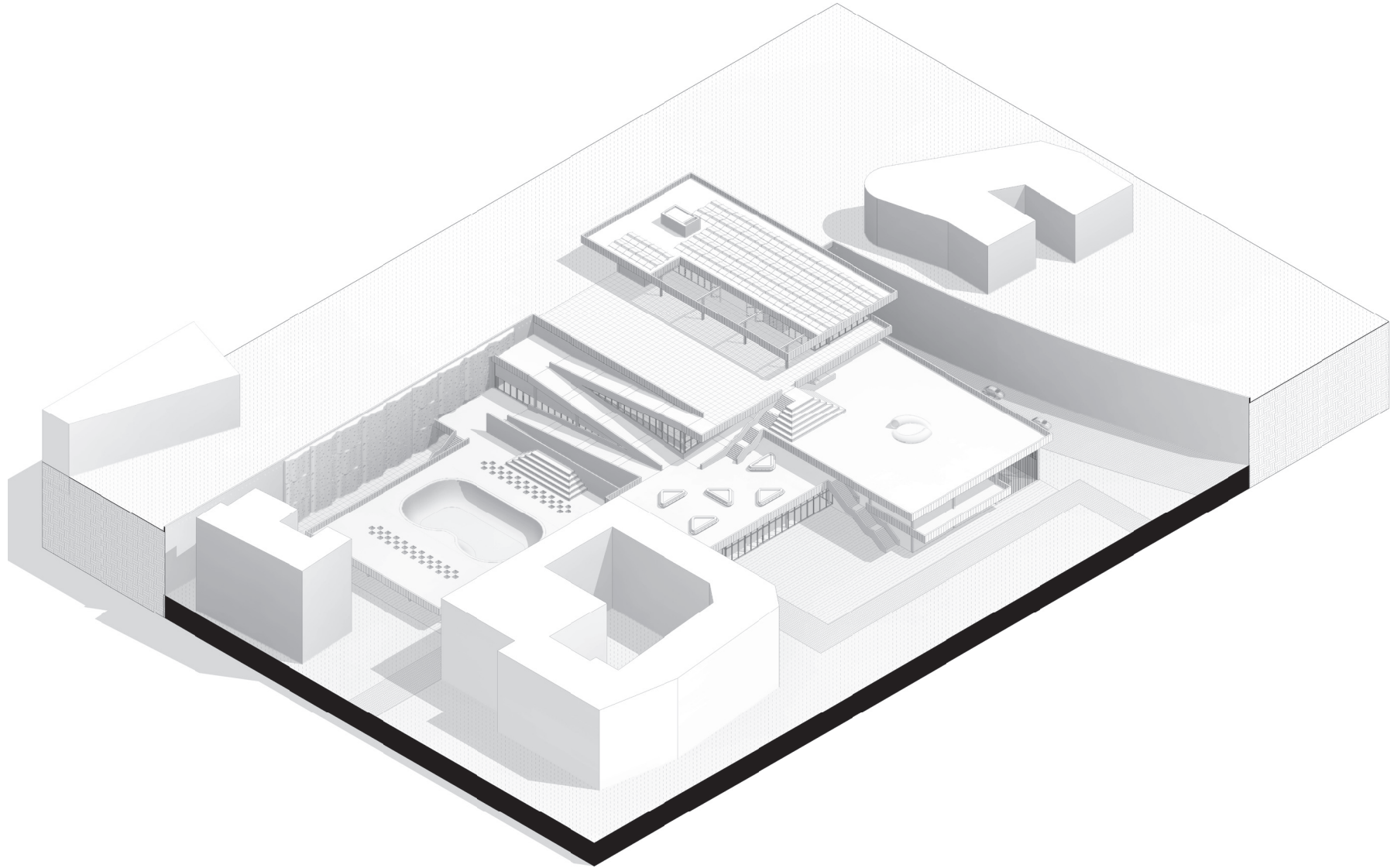


drawn scale 1:200
rescaled to fit page

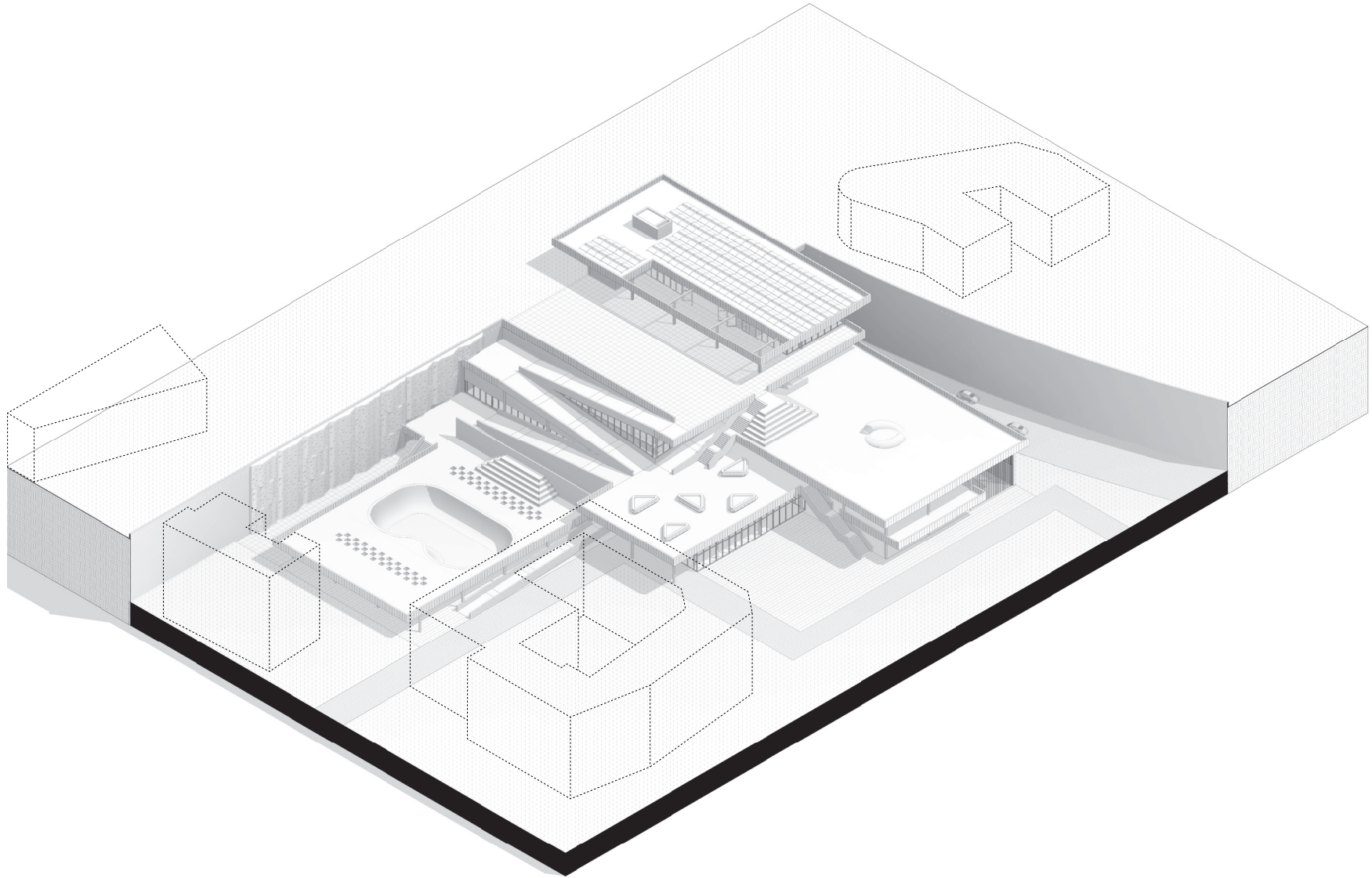
cross sections
section dd'



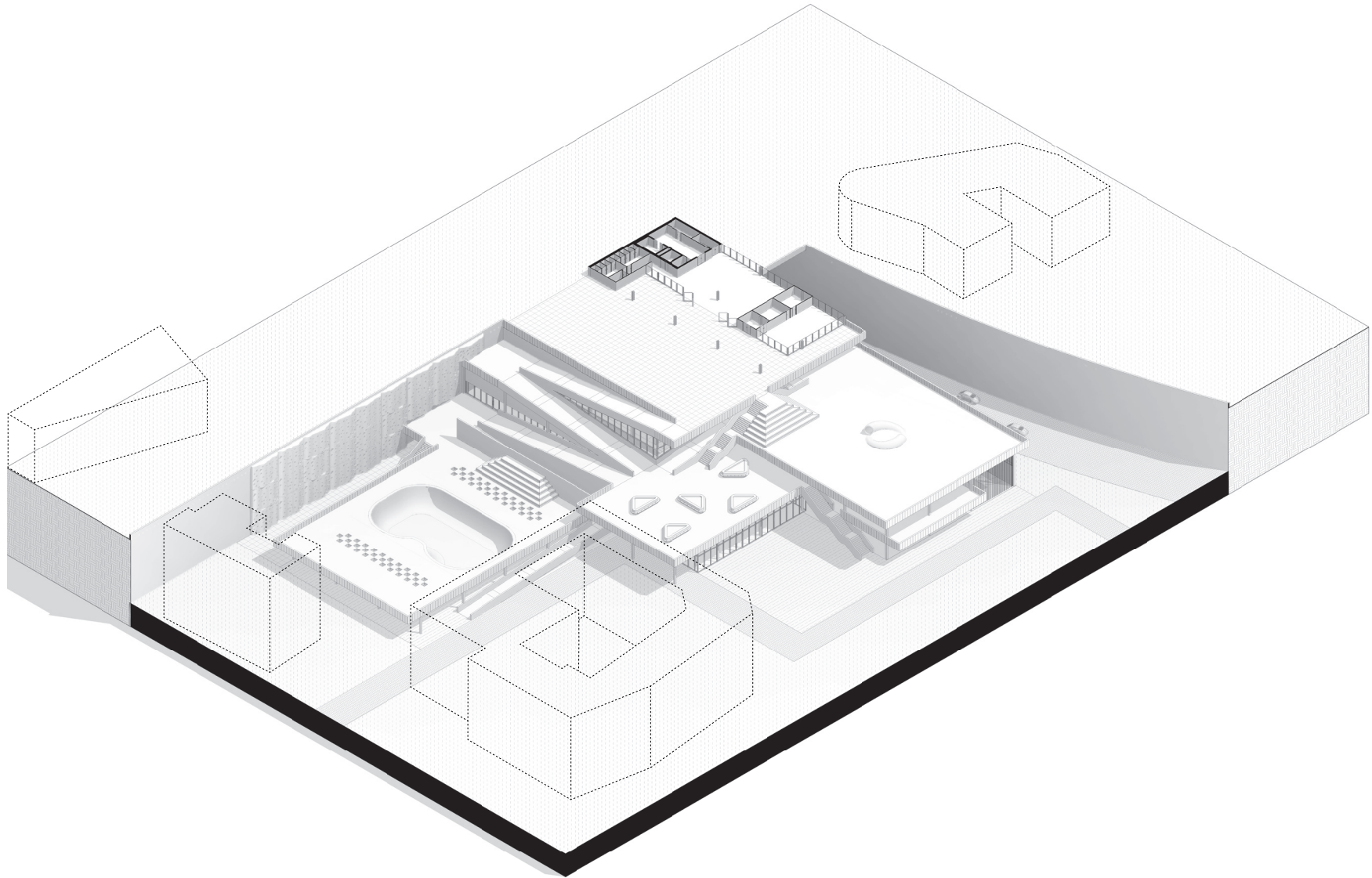
cross sections
top to bottom



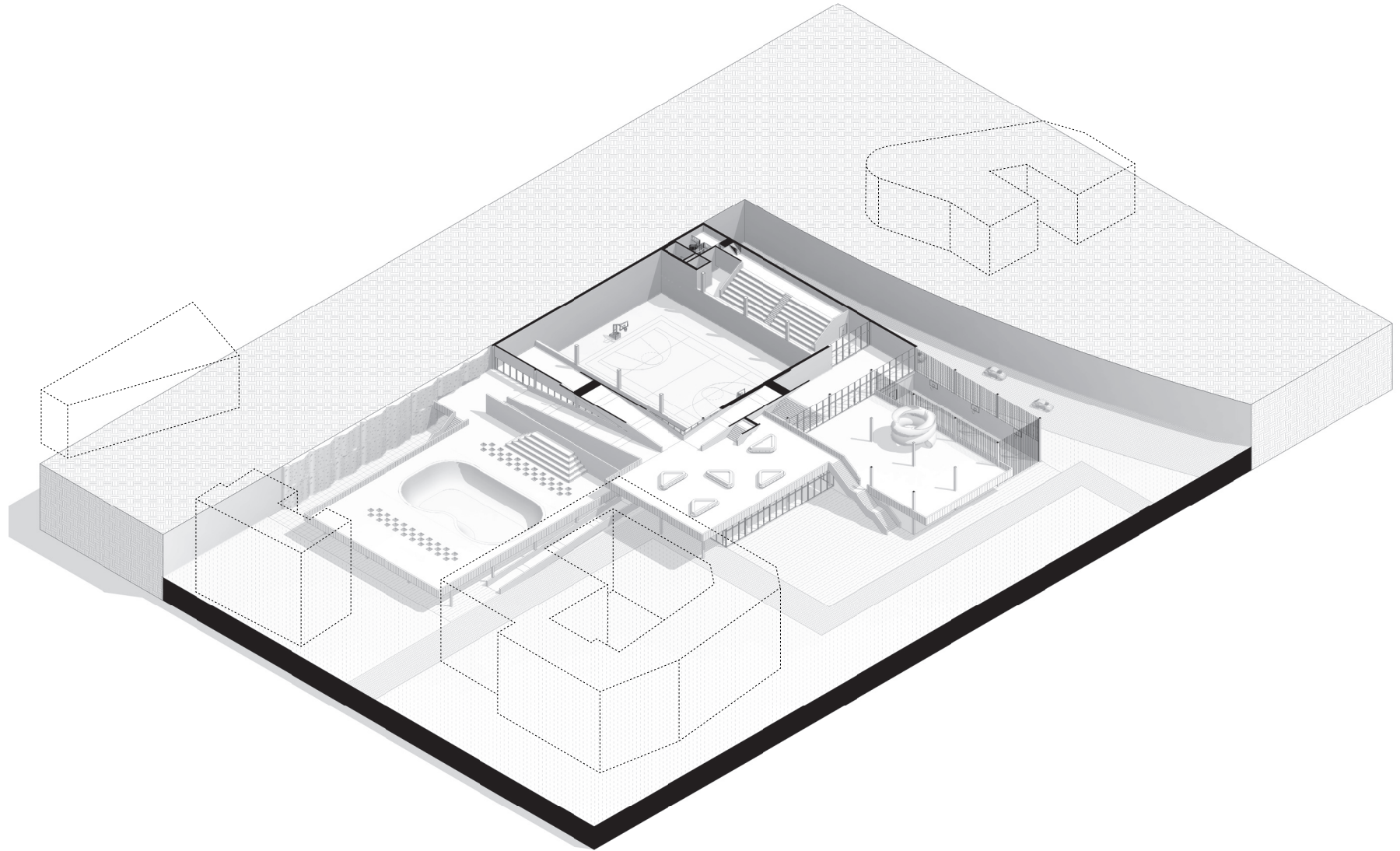
cross sections
top to bottom



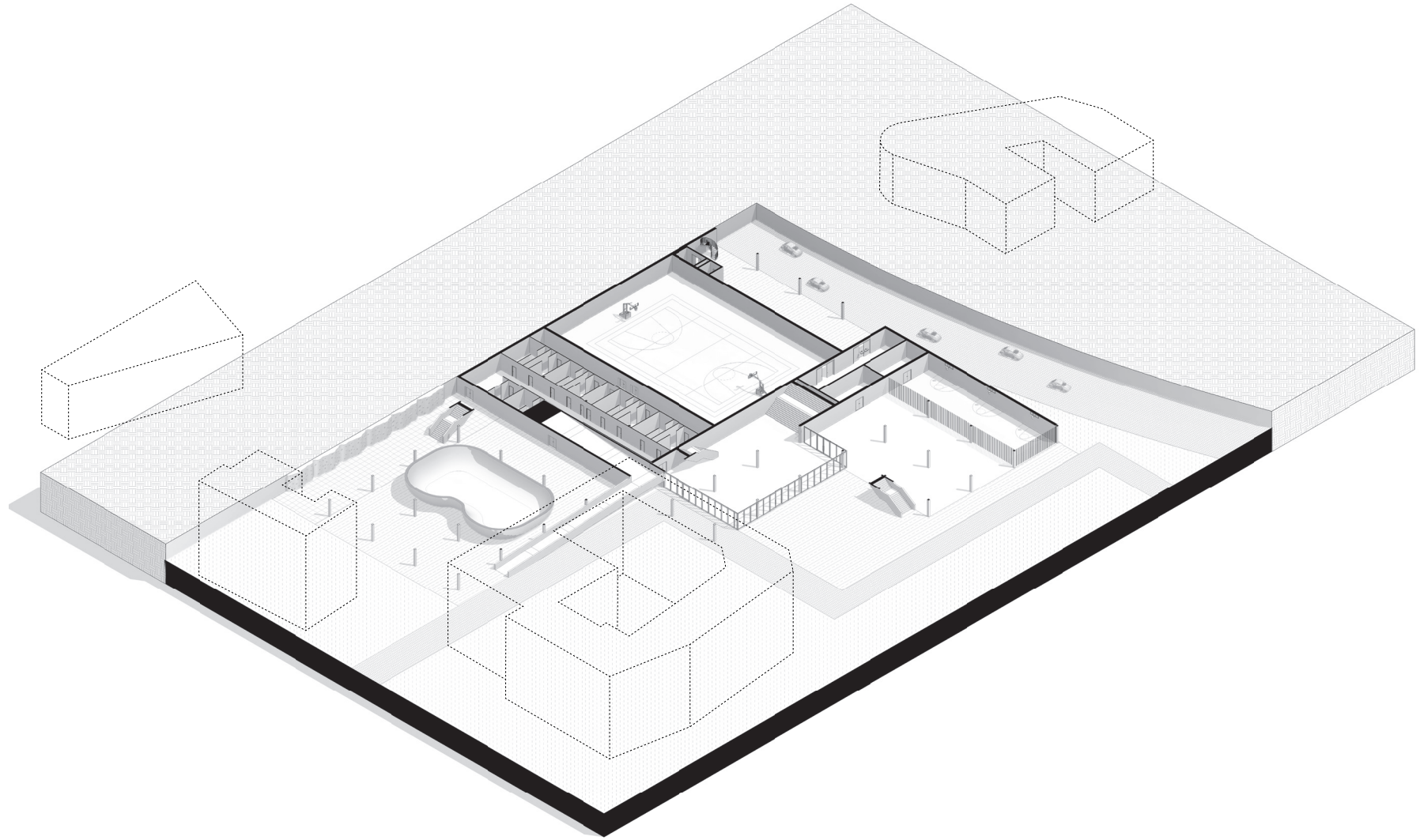
cross sections
top to bottom



cross sections
top to bottom



cross sections
top to bottom



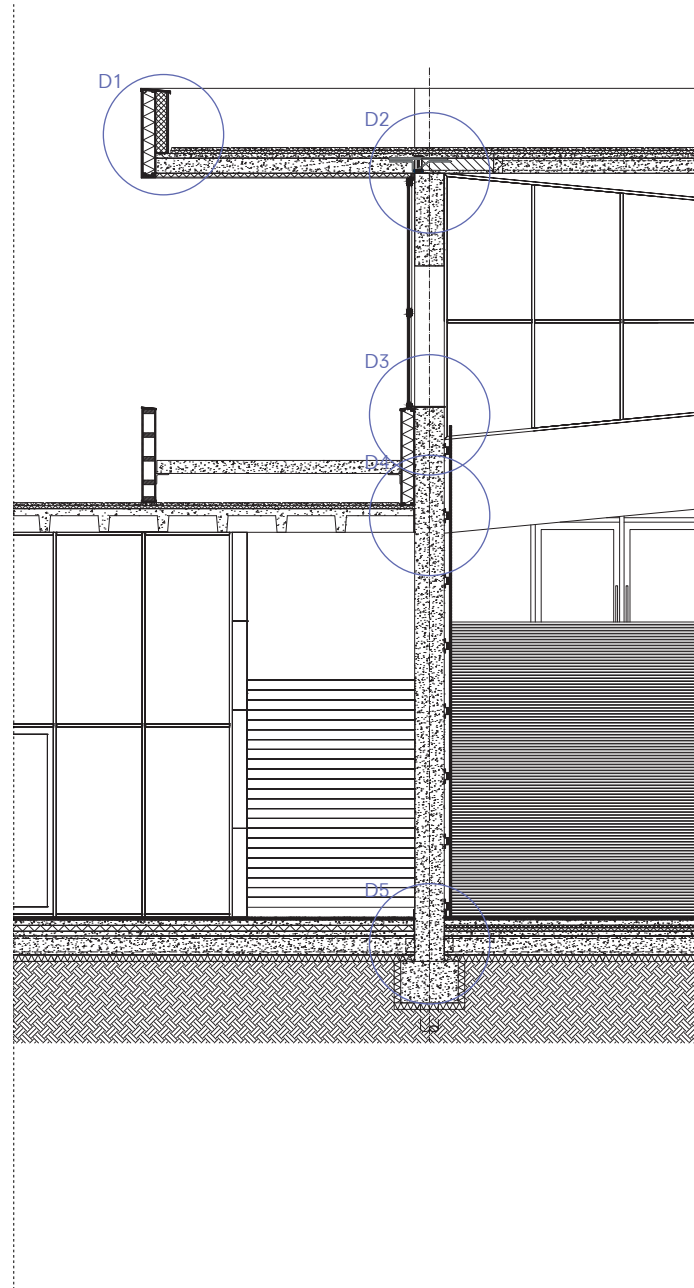
interior fragment
sports hall



drawn scale 1:50
rescaled to fit page

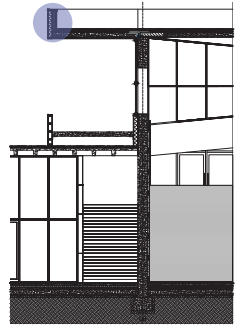
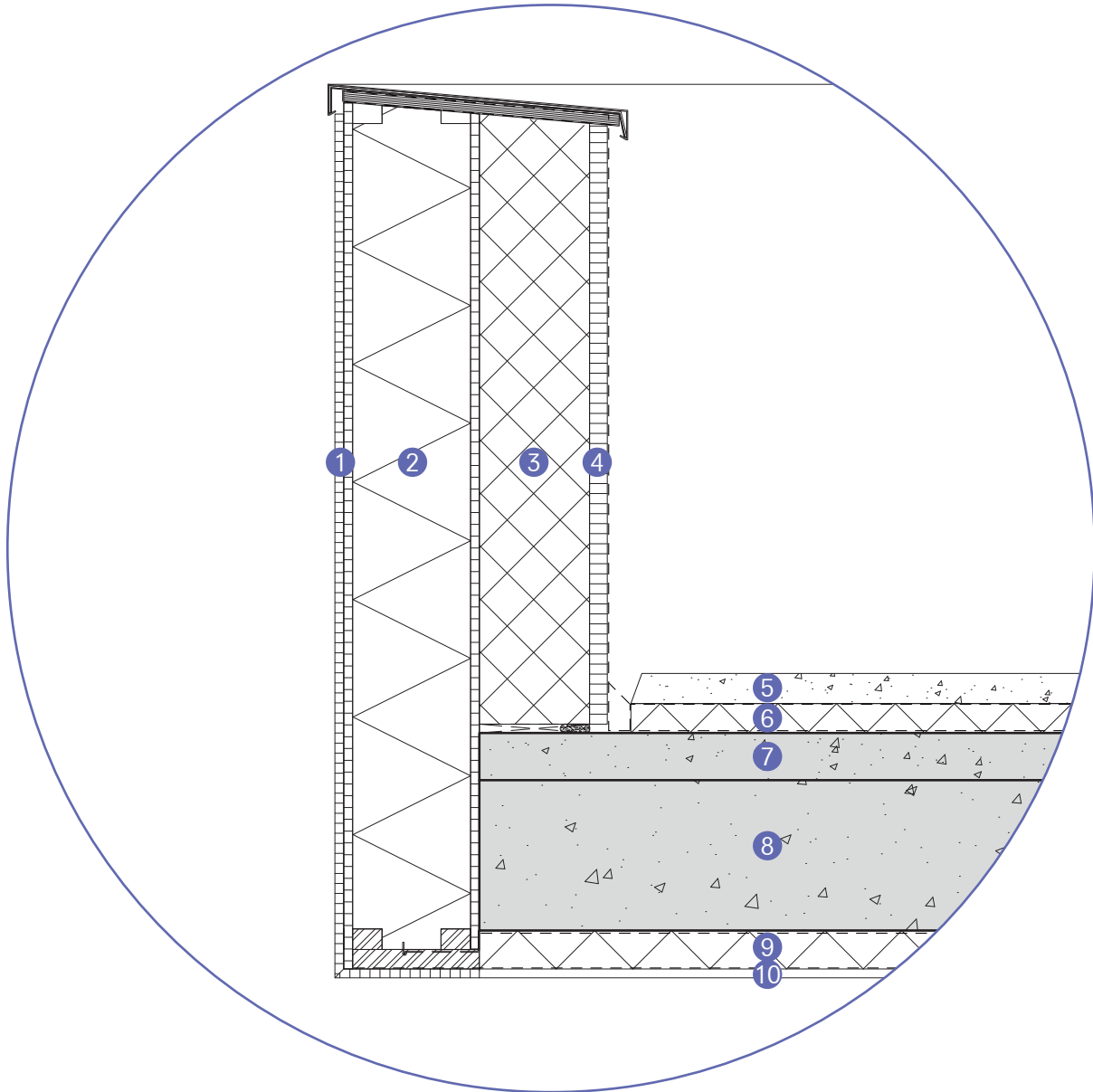
envelope fragment

entrance hall and sports hall



drawn scale 1:20
rescaled to fit page

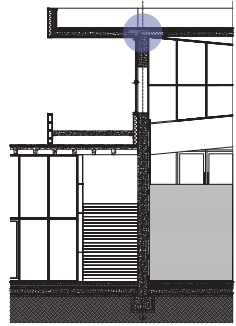
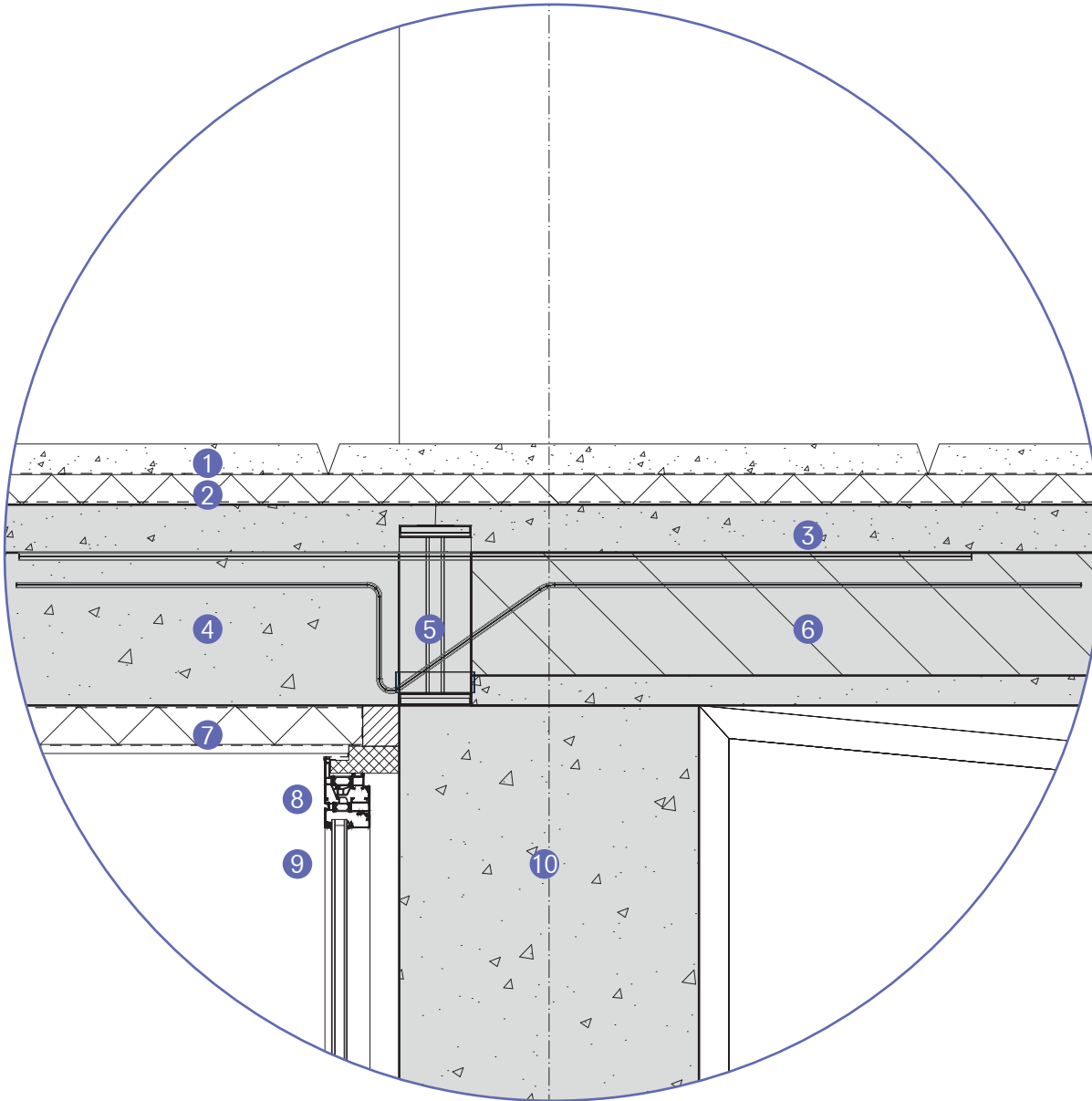
details
detail 1



- ① mdf dark wood finish (15mm)
- ② sandwich panel (230mm)
- ③ aerated concrete (187mm)
- ④ mdf dark wood finish (30mm)
- ⑤ 1000x1000x50 cement lightweight tiles (50mm)
- ⑥ xps insulation (50mm)
- ⑦ pressure layer (80mm)
- ⑧ precast concrete slab (255mm)
- ⑨ pir insulation (65mm)
- ⑩ plastered finish (15mm)

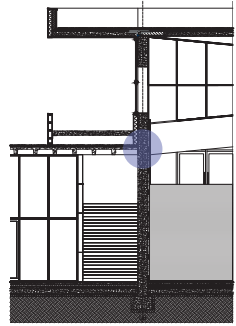
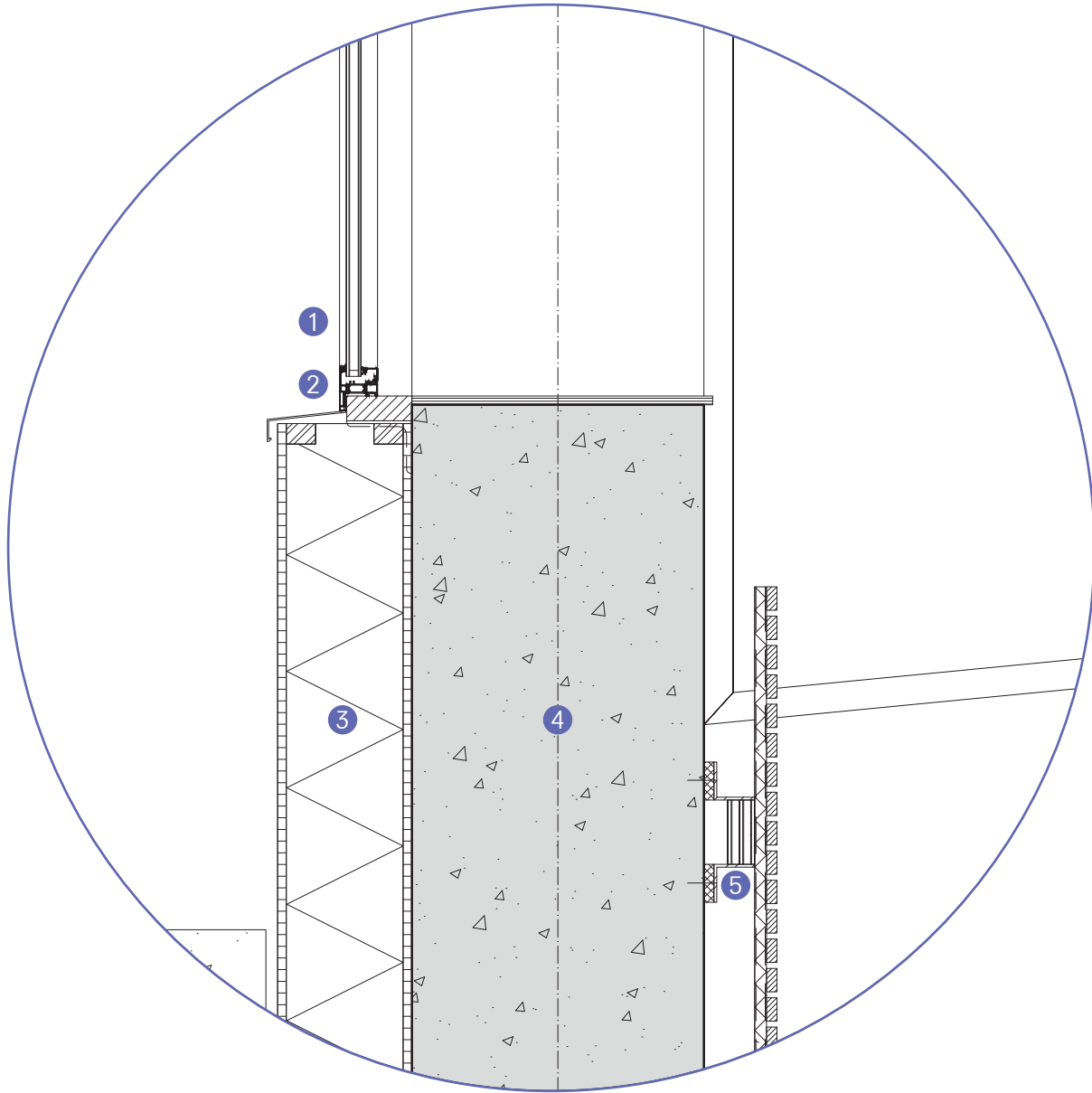
drawn scale 1:5
rescaled to fit page

details
detail 2



- ① 1000x1000x50
cement lightweight tiles
(50mm)
 - ② xps insulation
(50mm)
 - ③ pressure layer
(80mm)
 - ④ prefab balcony slab
(255mm)
 - ⑤ schöck isokorf CXT
 - ⑥ precast concrete slab
(255mm)
 - ⑦ pir insulation
(65mm)
 - ⑧ aluminium window-frame
ra19005
 - ⑨ hr+++ glass
 - ⑩ 1500x500
prestressed concrete beam
(500mm)
- drawn scale 1:5
rescaled to fit page

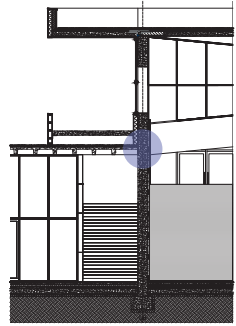
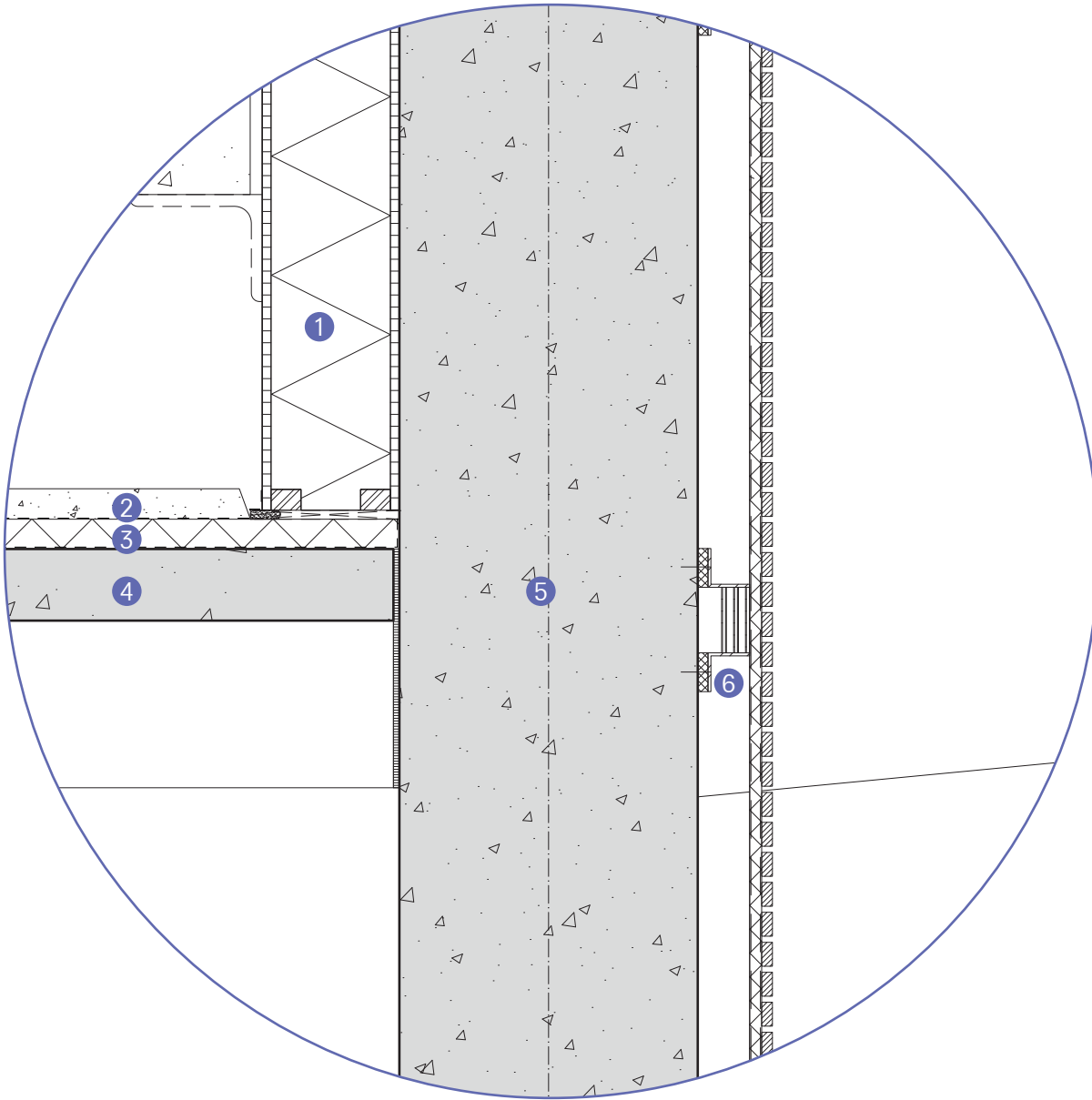
details
detail 3



- ① hr+++ glass
- ② aluminium window-frame
ra19005
- ③ sandwich panel
(230mm)
- ④ concrete wall
(500mm)
- ⑤ acoustic wall panel
(125mm)

drawn scale 1:5
rescaled to fit page

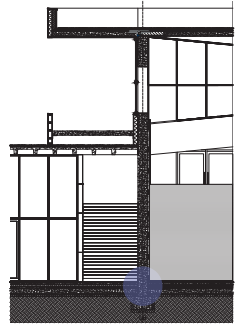
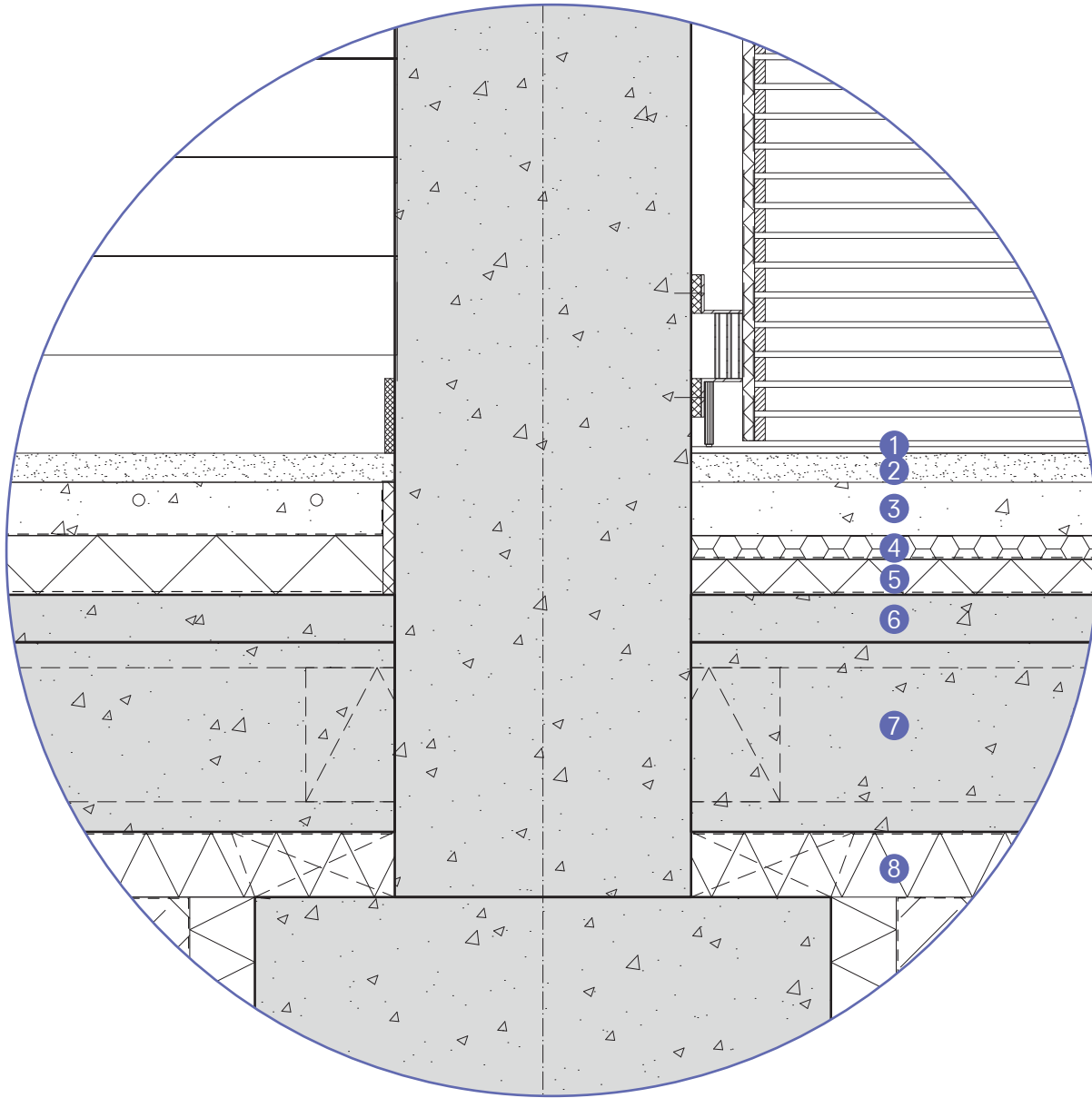
details
detail 4



- ① 1000x1000x50
cement lightweight tiles
(50mm)
- ② 1000x1000x50
cement lightweight tiles
(50mm)
- ③ xps insulation
(50mm)
- ④ 1000x1000x400
concrete waffle slab
(400mm)
- ⑤ concrete wall
(500mm)
- ⑥ acoustic wall panel
(125mm)

drawn scale 1:5
rescaled to fit page

details
detail 5



- ① sports floor (11mm)
- ② anhydrite floor (49mm)
- ③ dovetailed sheeting + concrete (90mm)
- ④ steel suspension profiles (40mm)
- ⑤ pir insulation (60mm)
- ⑥ pressure layer (80mm)
- ⑦ h320 hollow core slab (320mm)
- ⑧ eps insulation (110mm)

drawn scale 1:5
rescaled to fit page

THANK YOU