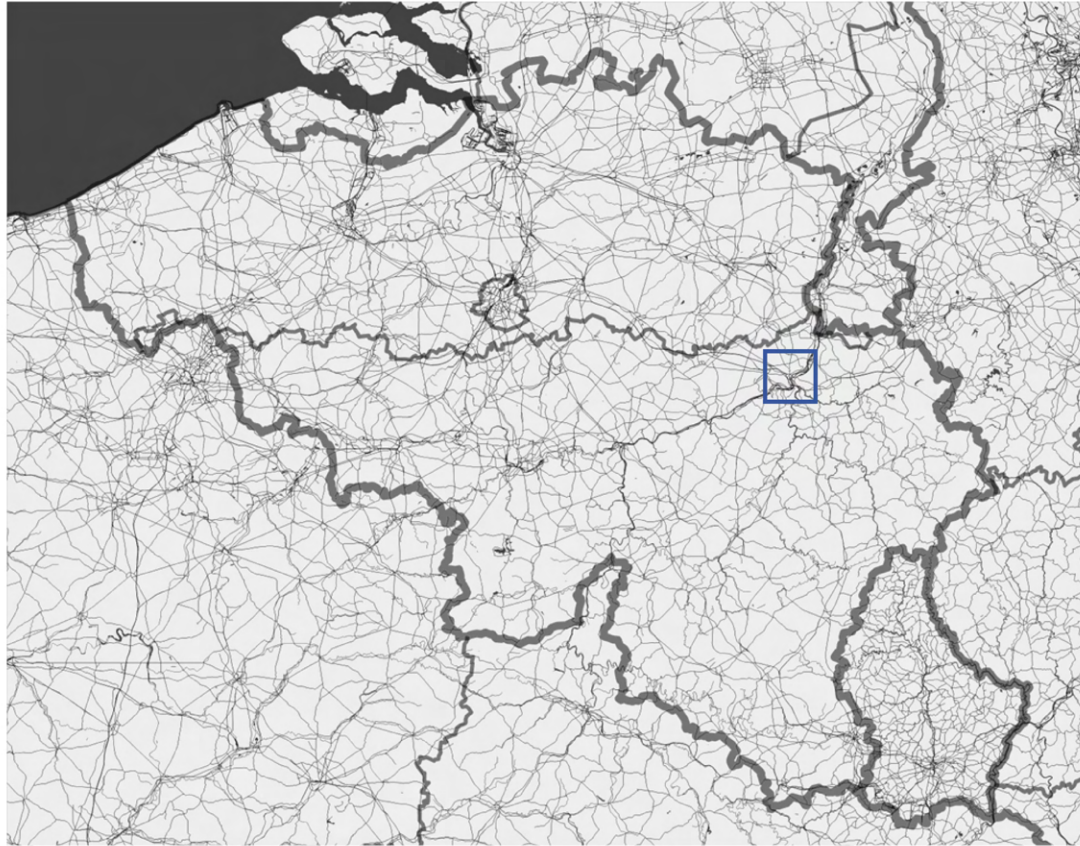




Simon Muntz





author



author



Simon Muntz



Simon Muntz



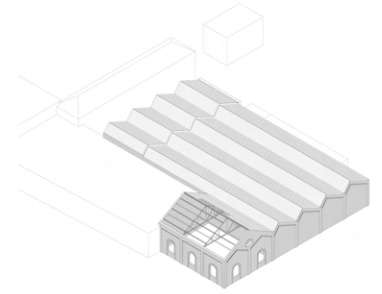
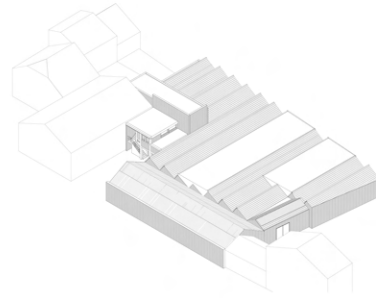
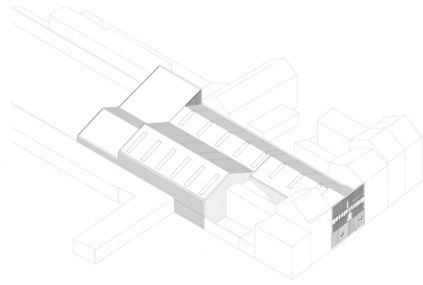
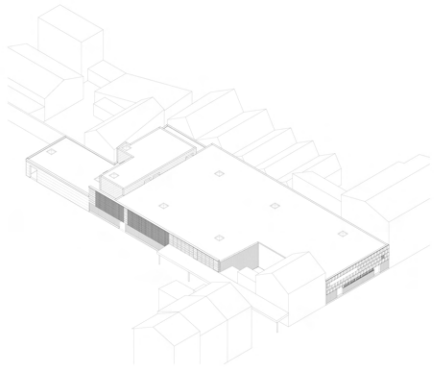
author

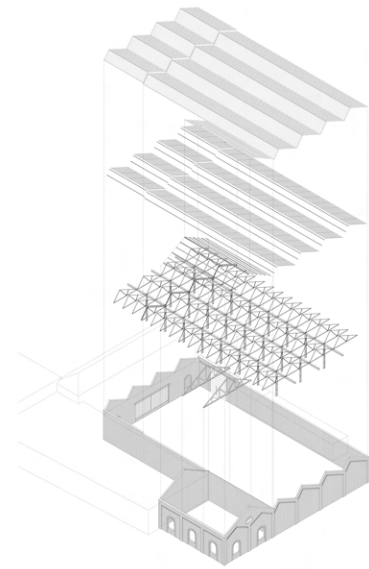
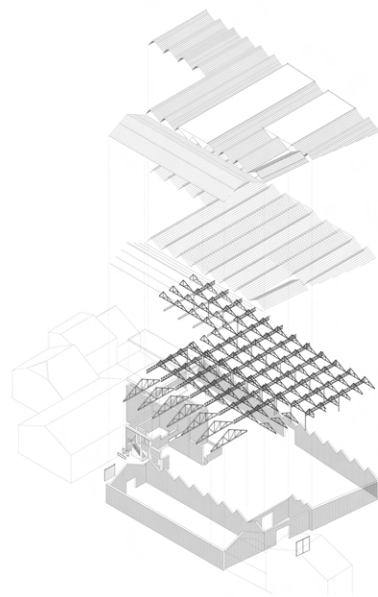
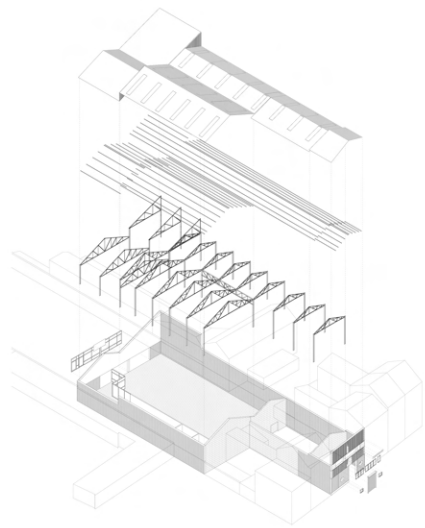
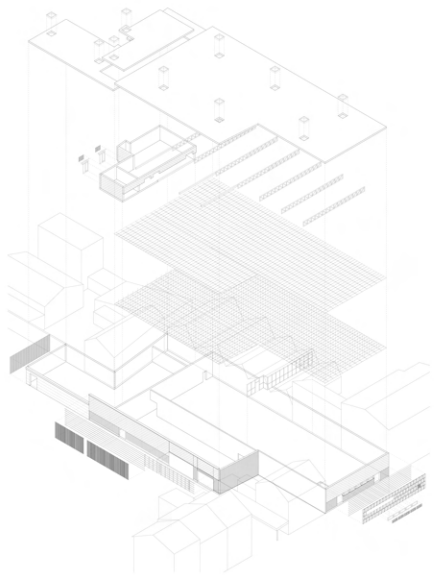


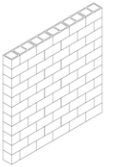
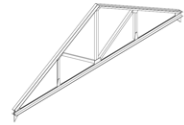
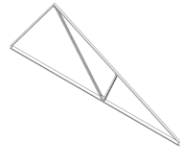
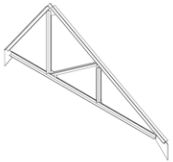
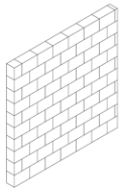
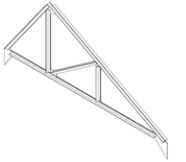
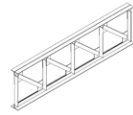
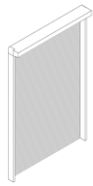
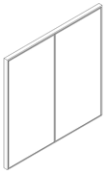
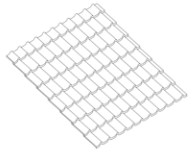
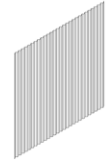
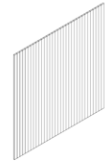
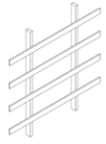
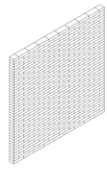
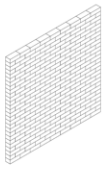
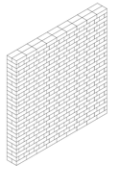
FROM DECAY TO REUSE

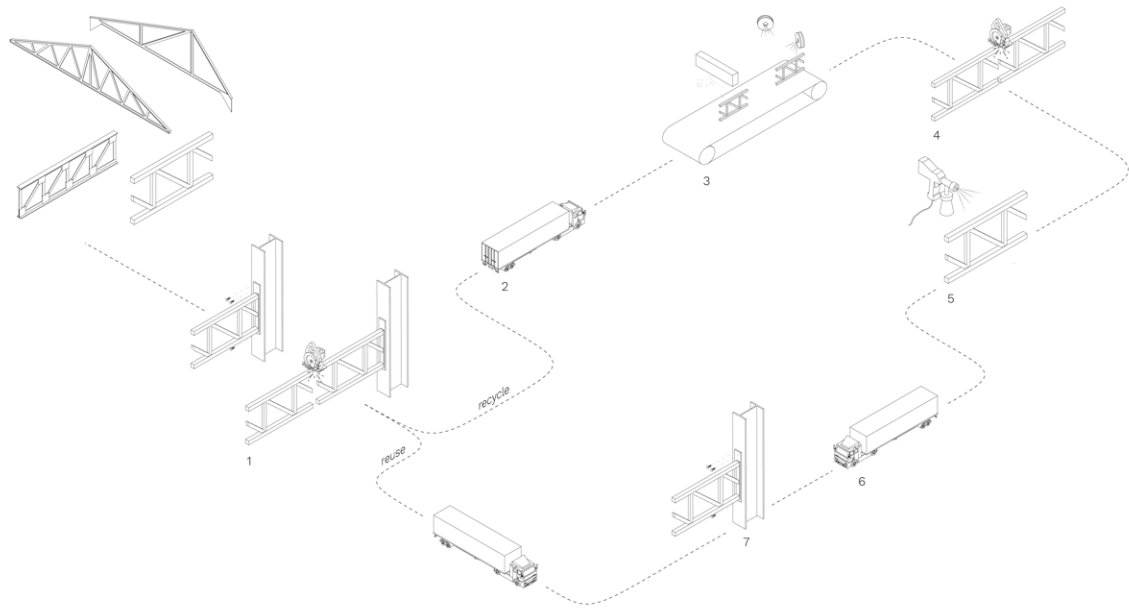
A guide to reusing reclaimed materials from abandoned industrial sites in Liège

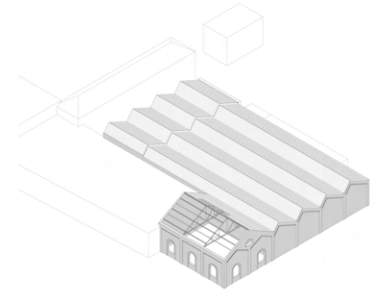
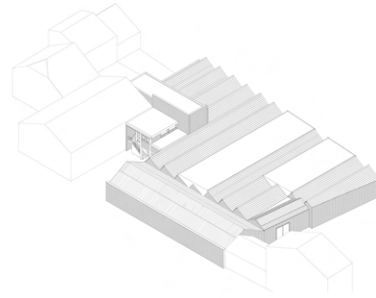
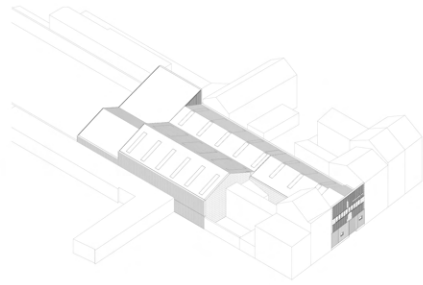
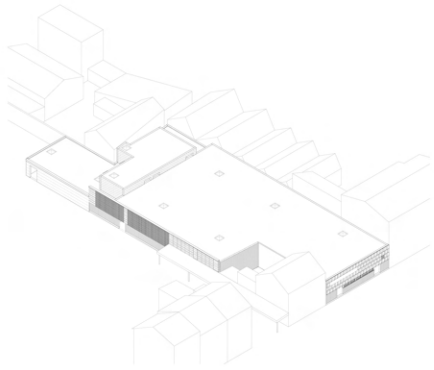
Djamo Mastenbroek & Thijs Reitsma

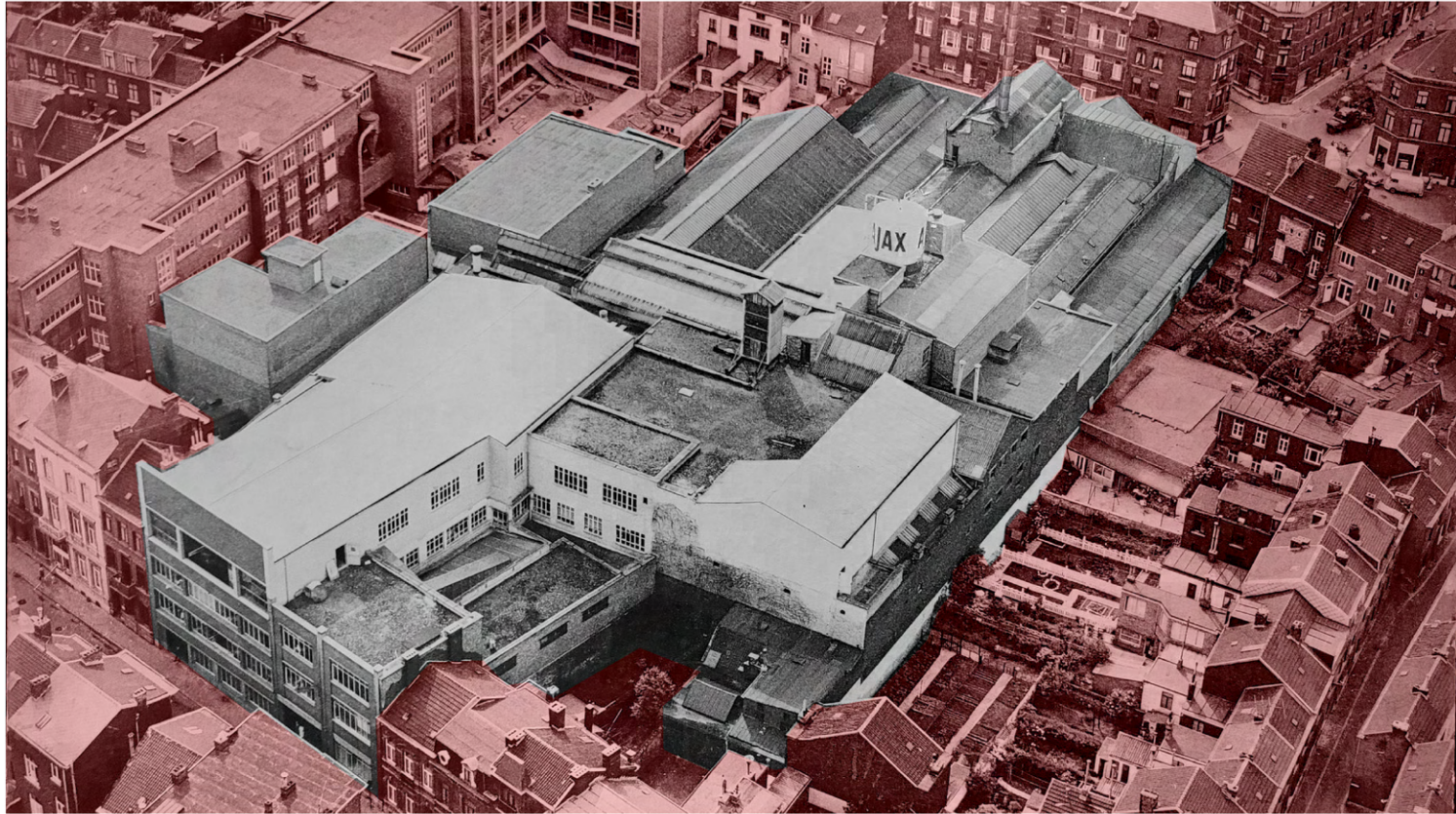












Mining & Making group

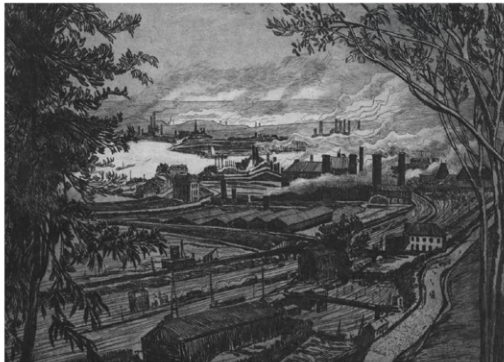
THE ELEPHANT

U.P.I.C.

(Unidentifiable Possibly Industrial Complexes)



Lithograph, View of Liège, 1843, Collection Galerie Wittert



Etching, Meuse Valley, 1939, Collection Galerie Wittert

1837 - 1940



author



author

1950 - 1980



author



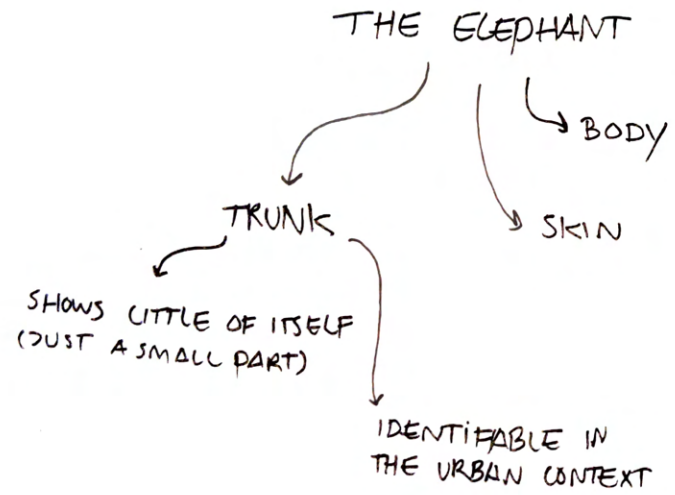
author

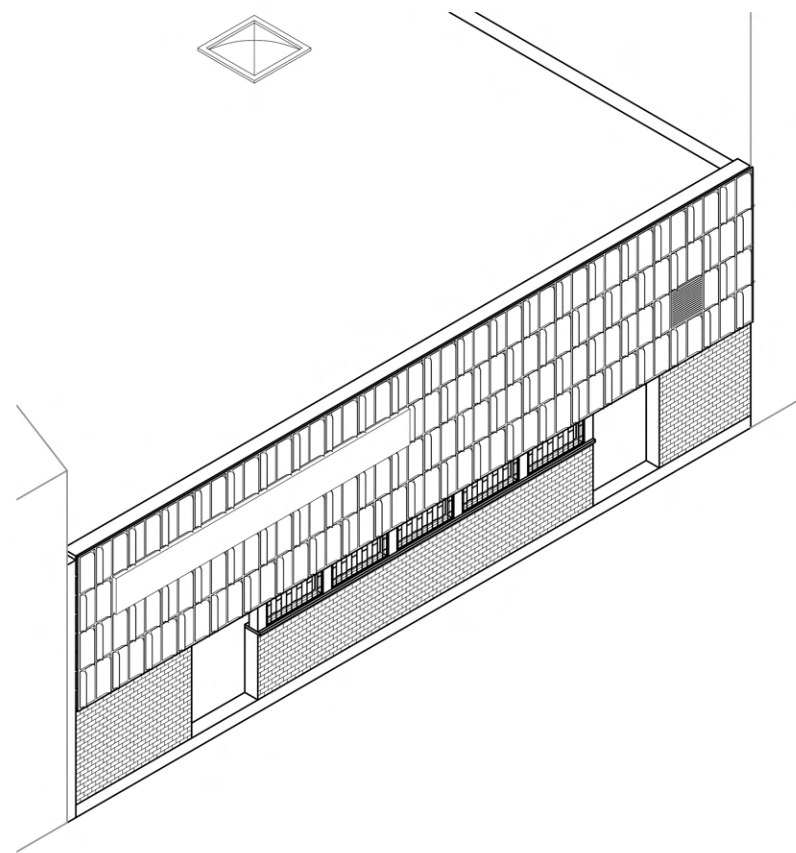
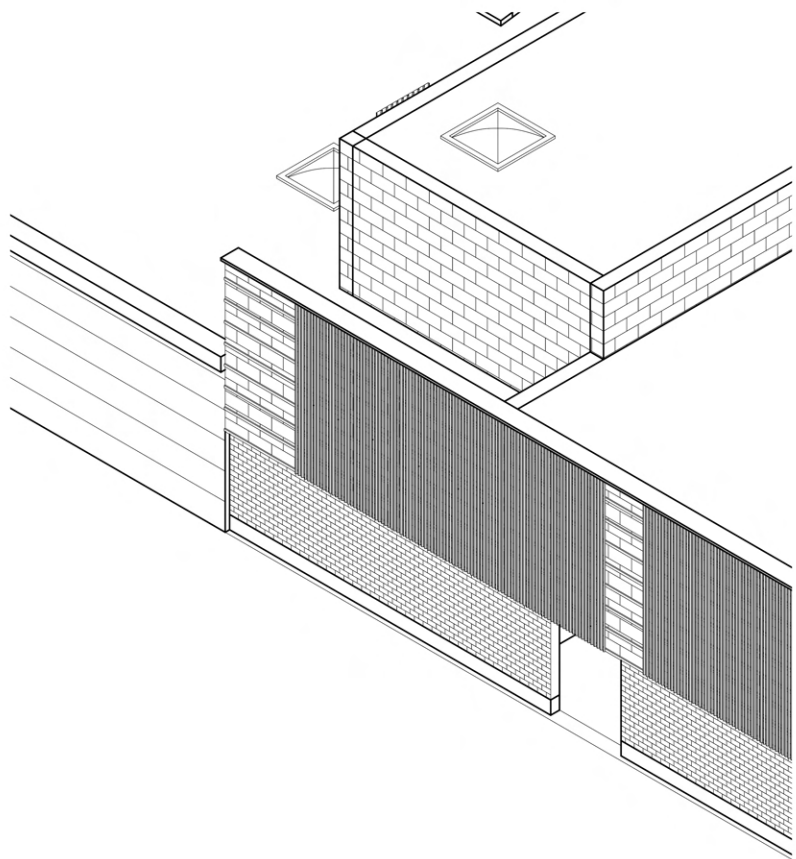
1980 - TODAY



THE ELEPHANT







TRUNK



author



author

TRUNK

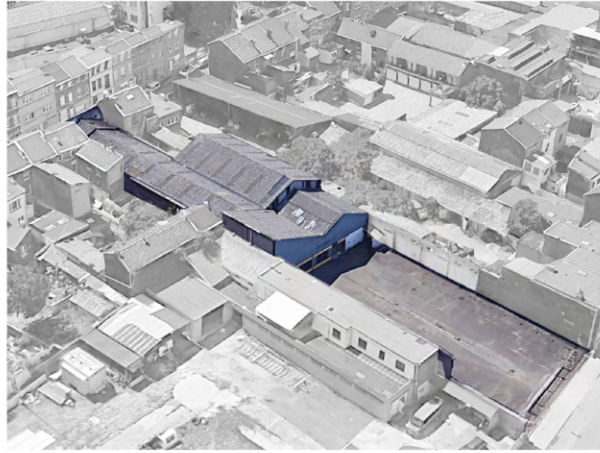
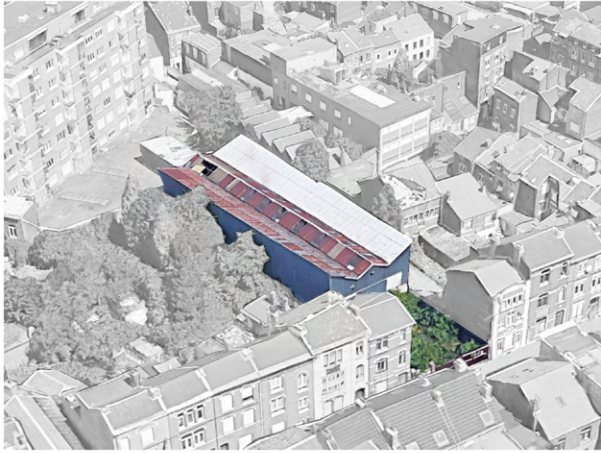


Thijs Reitsma



Thijs Reitsma

TRUNK





author



author

TRUNK

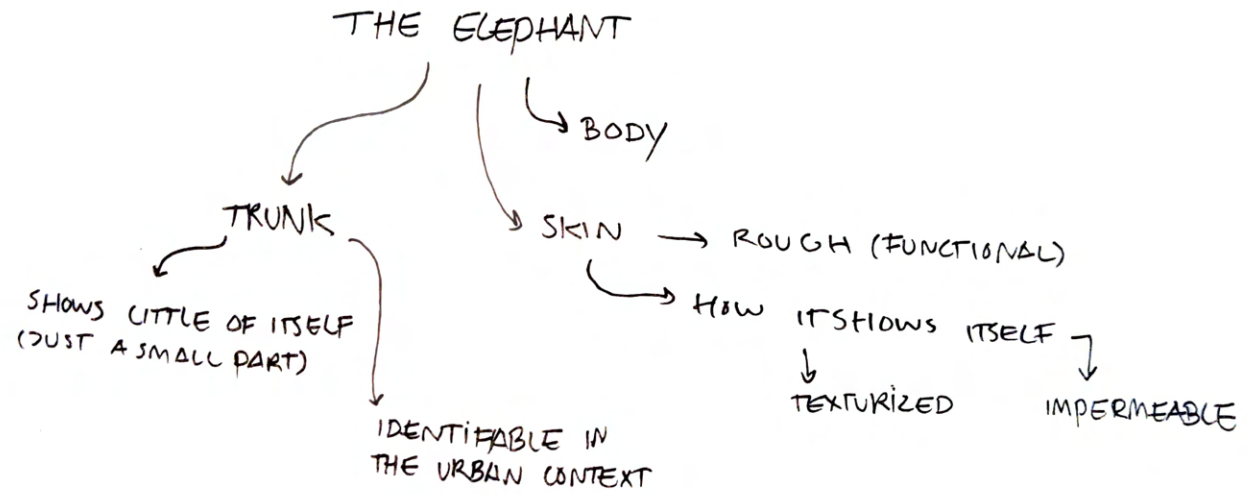


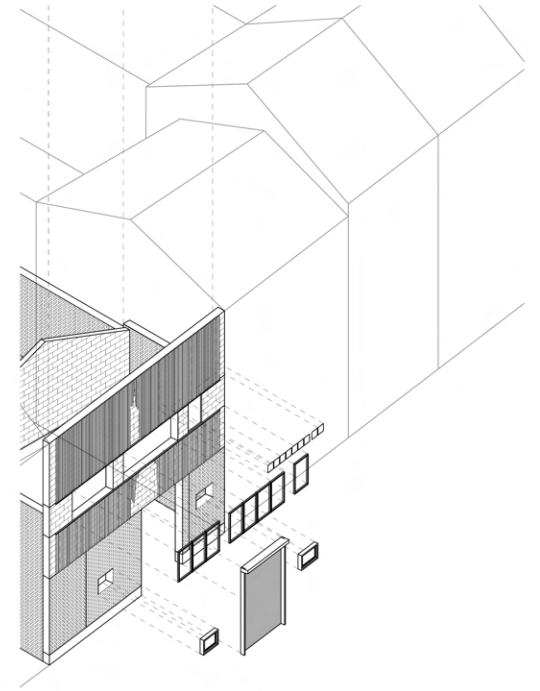
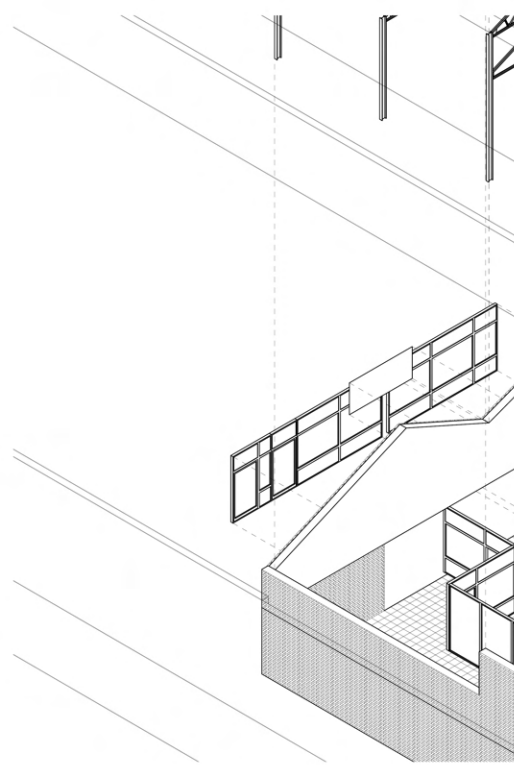
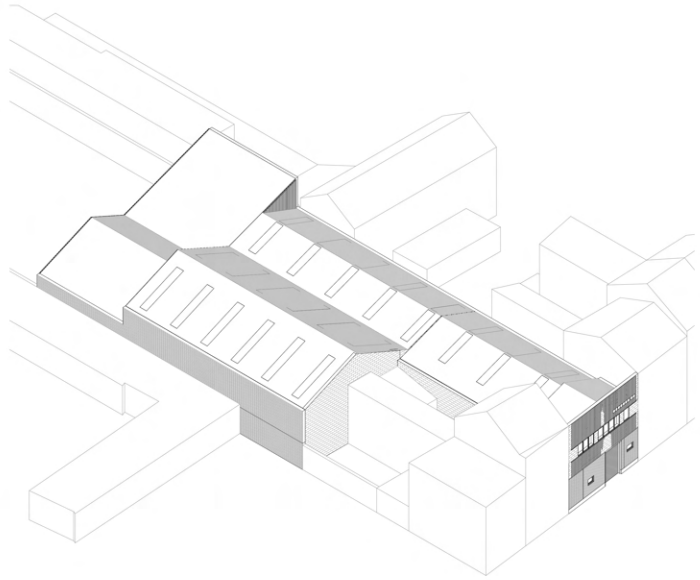
author



author

TRUNK





SKIN



author



author

SKIN



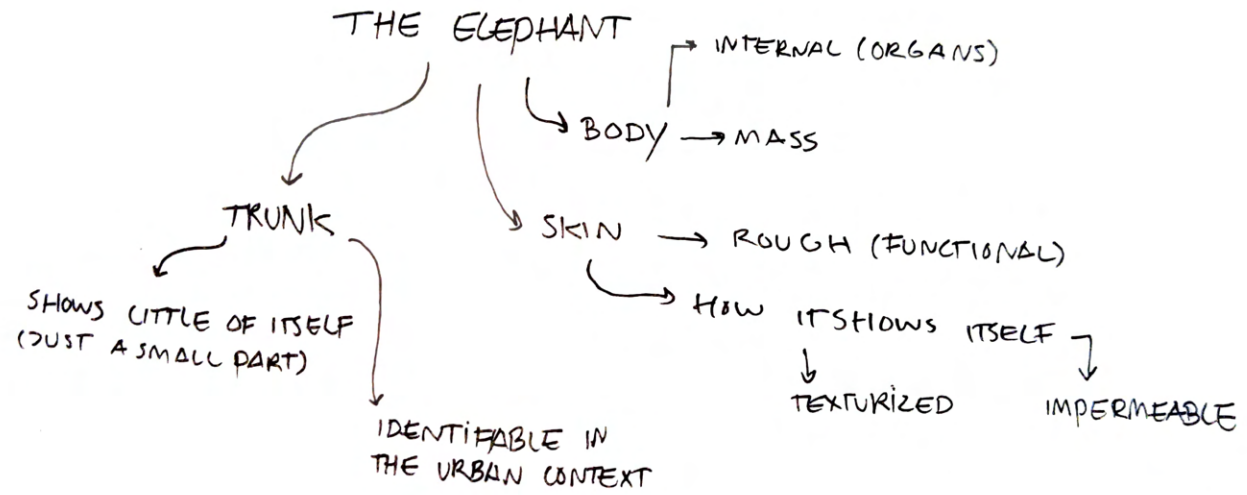
Thijs Reitsma

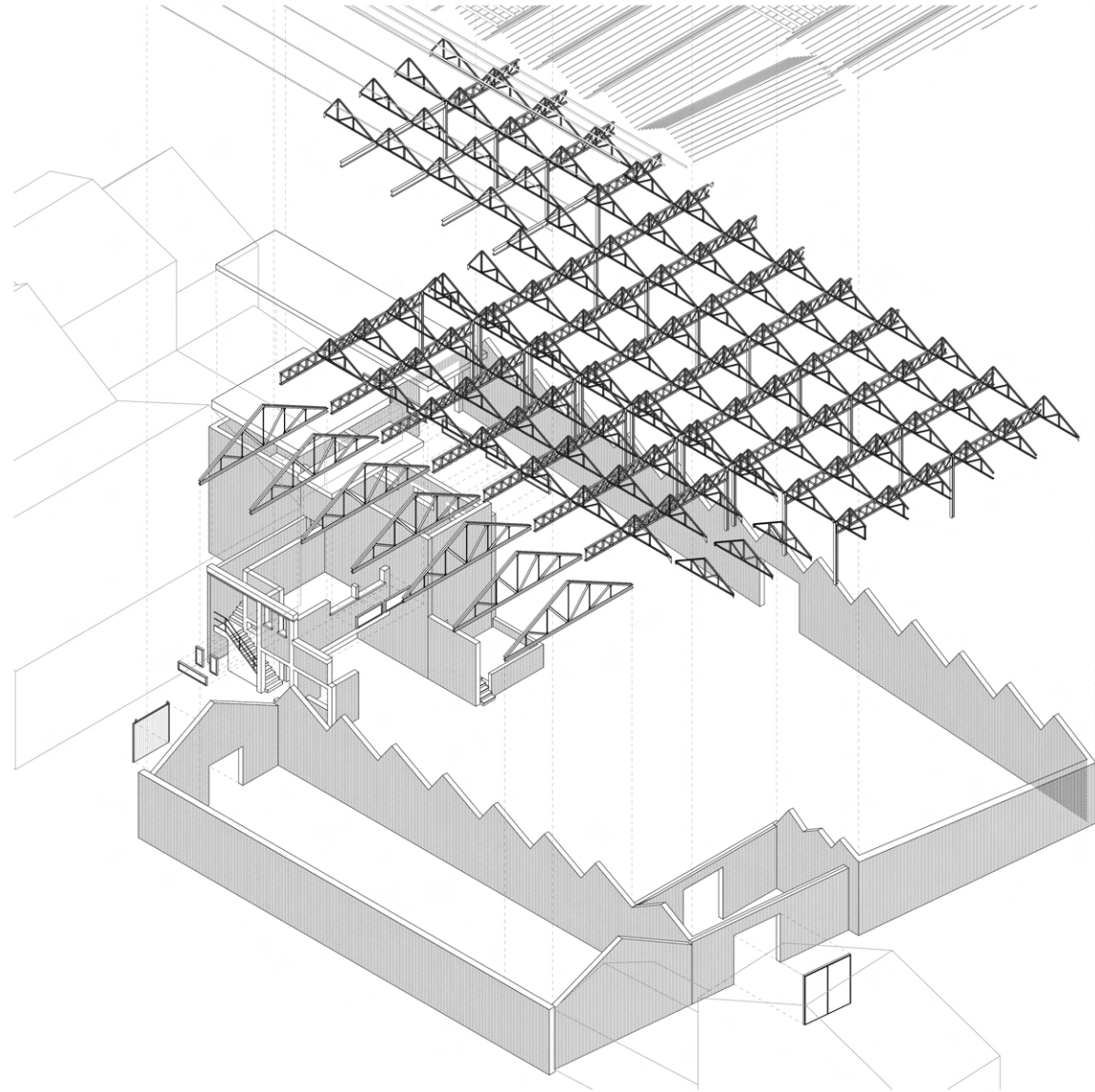
SKIN



Thijs Reitsma

SKIN





BODY



Thijs Reitsma

BODY



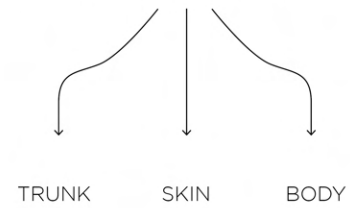
Thijs Reitsma



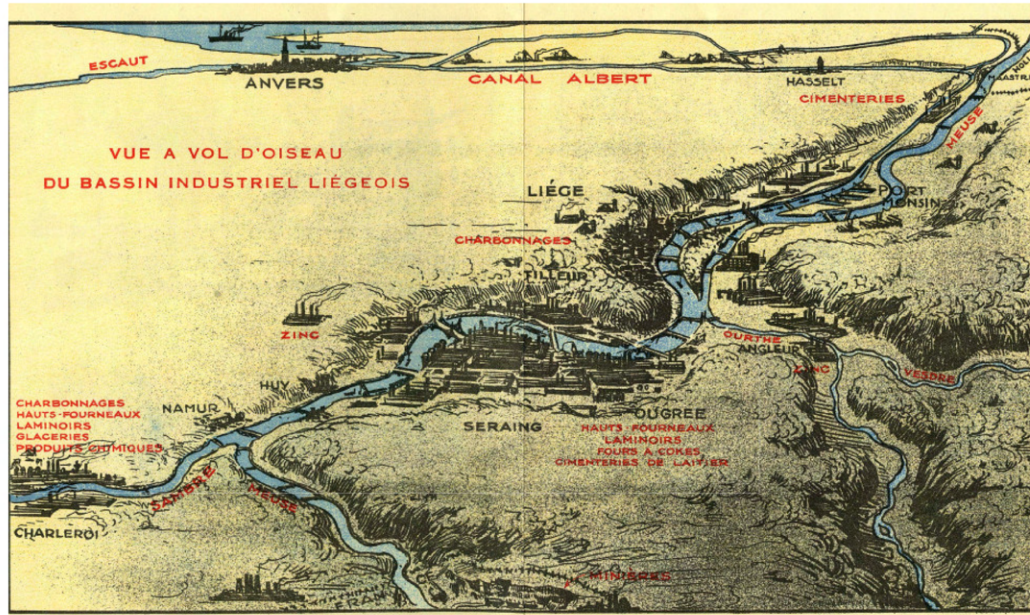
Thijs Reitsma

BODY

HOW DO I DEAL WITH THE ELEPHANT?



HOW DO I DEAL WITH THE POST-INDUSTRIAL CITY?



Ministry of Public Works, Bridges and Roads, 1930



Anne Fintelman, 2012



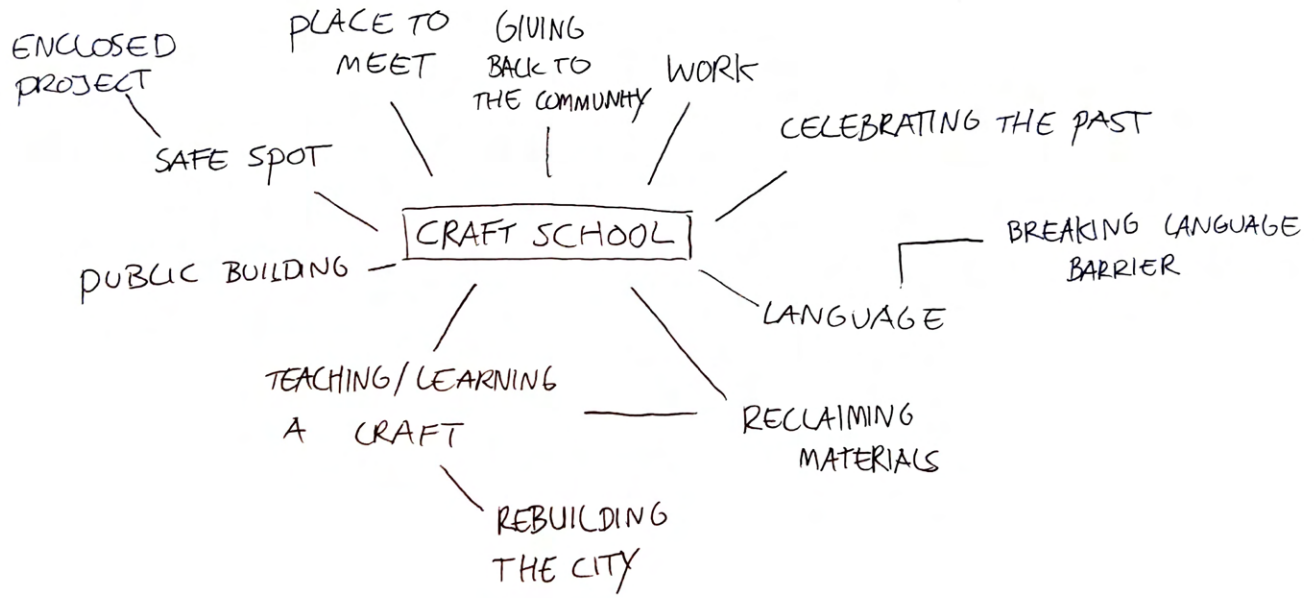
Simon Muntz

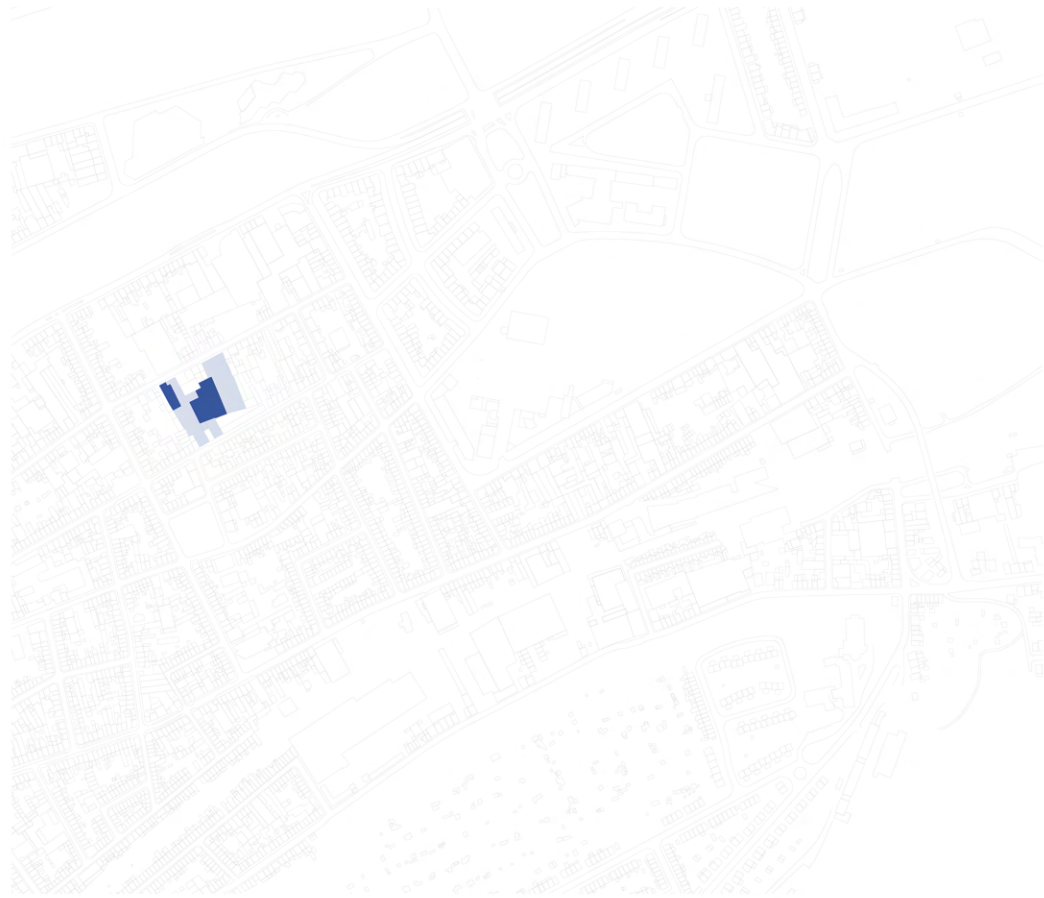


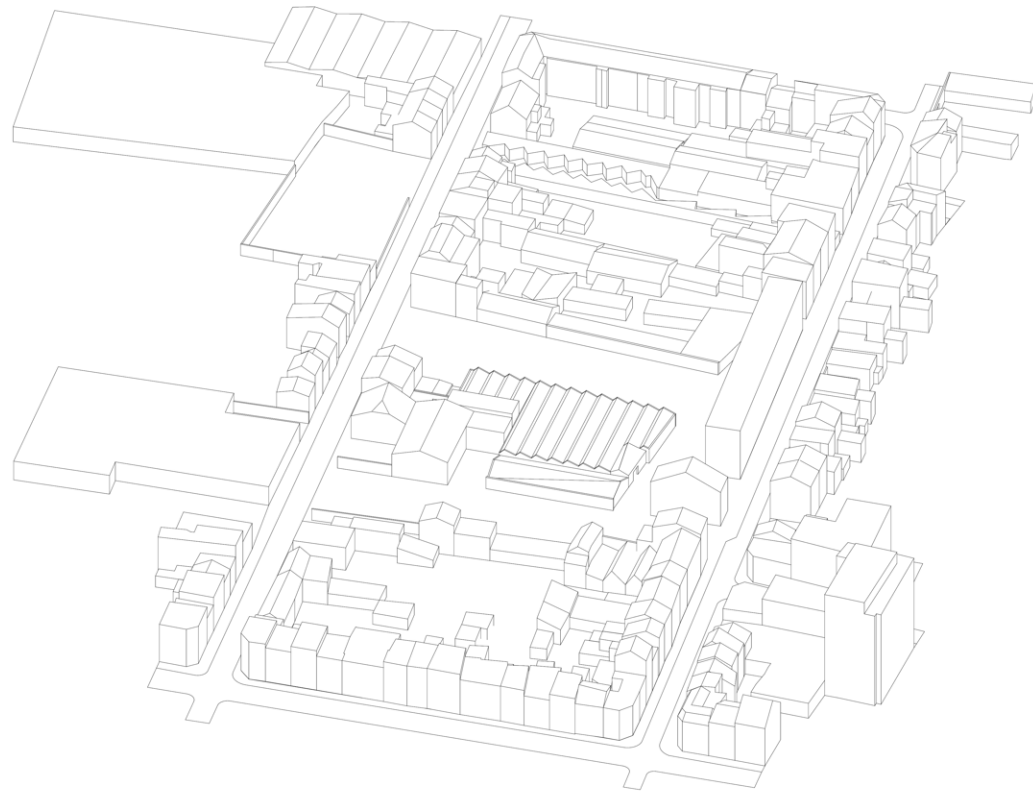
Inès van Rijn



Inès van Rijn









Thijs Reitsma



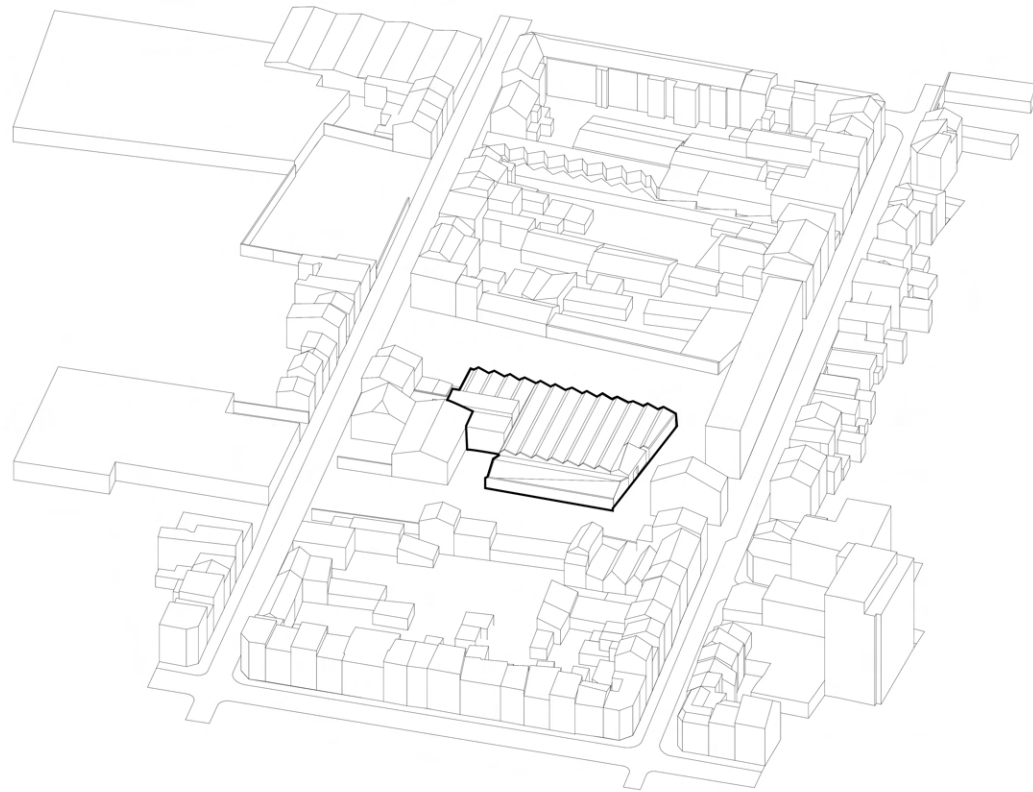
Thijs Reitsma

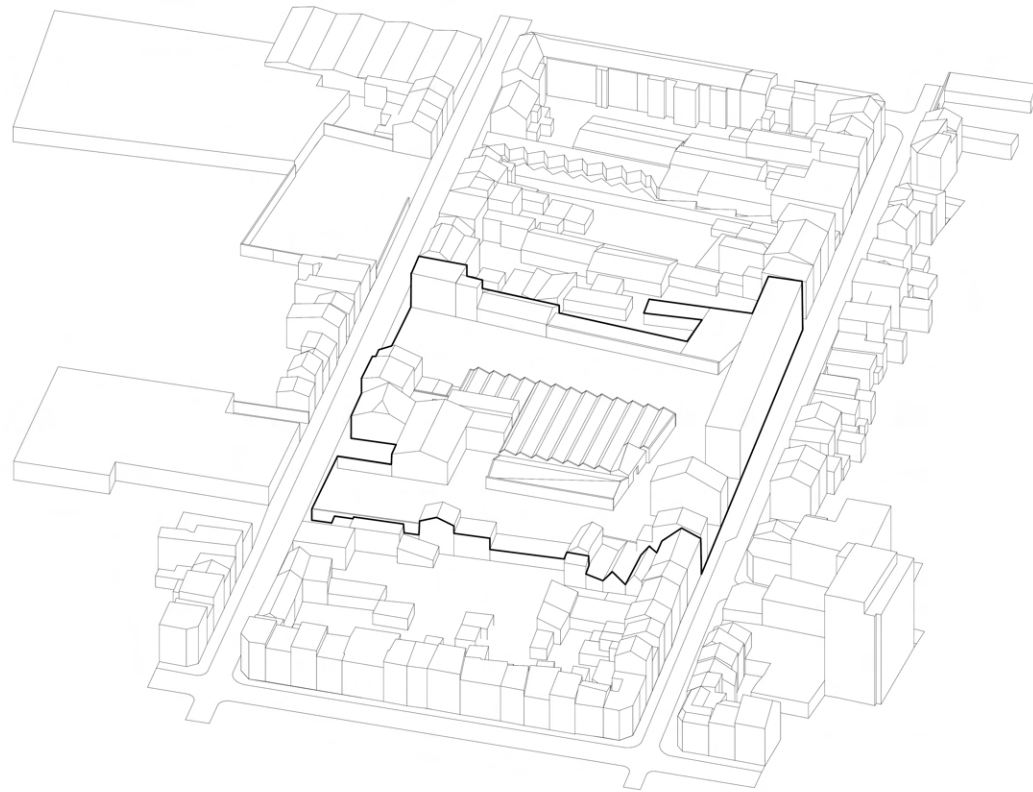


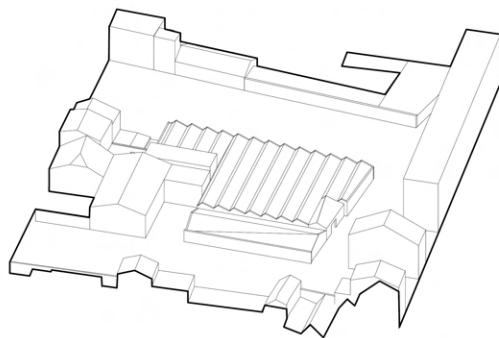
Thijs Reitsma

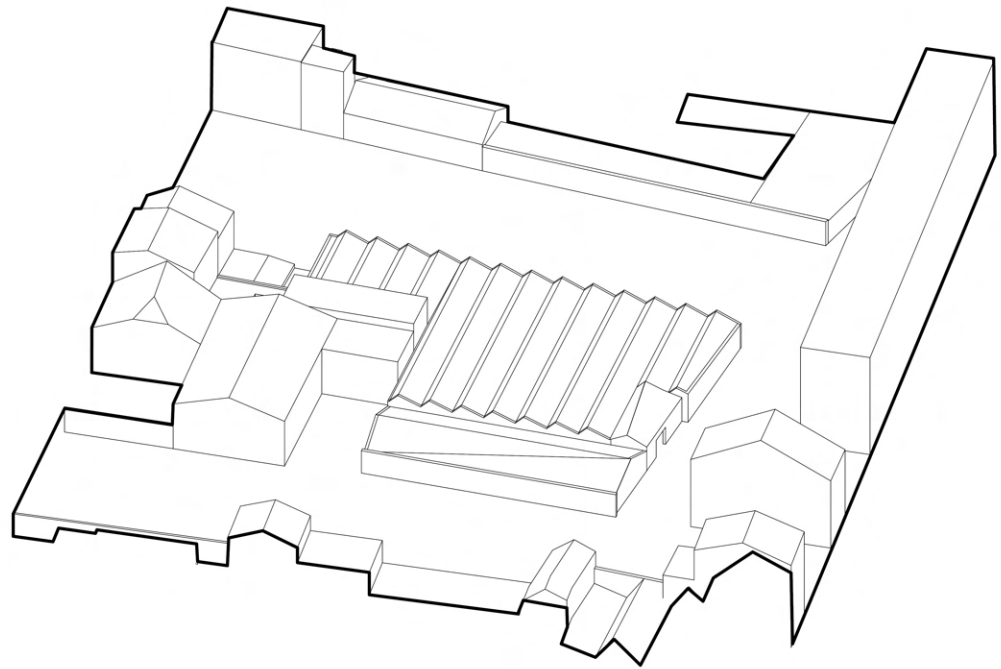


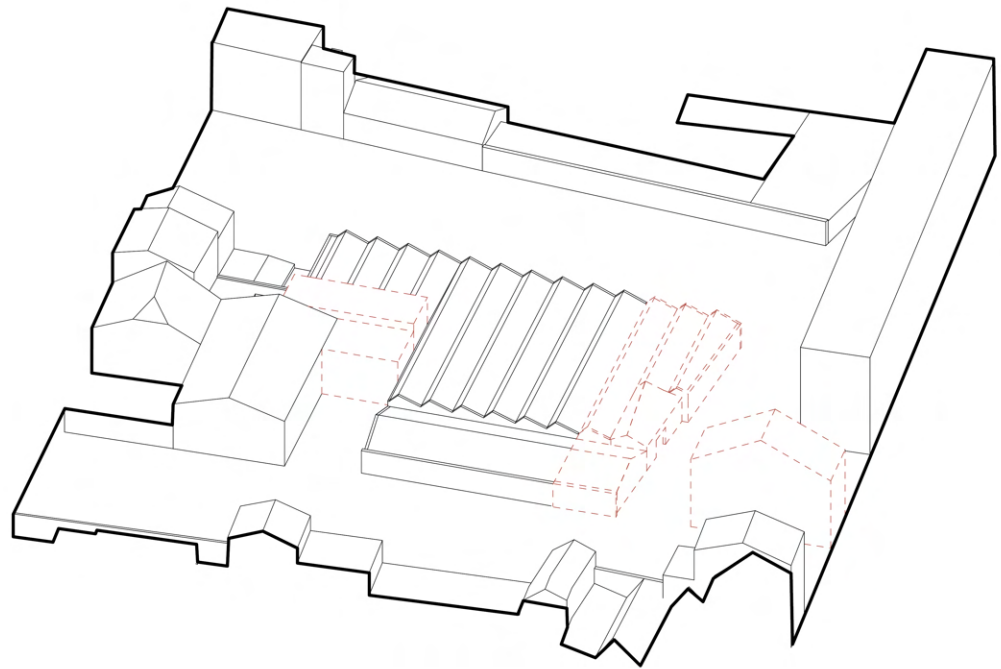
Thijs Reitsma

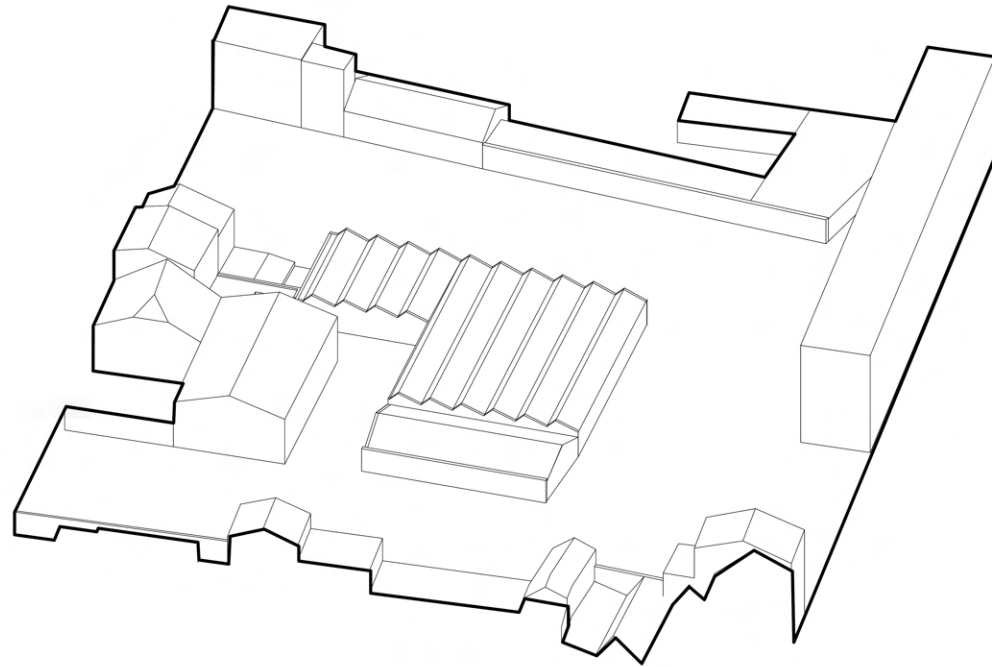


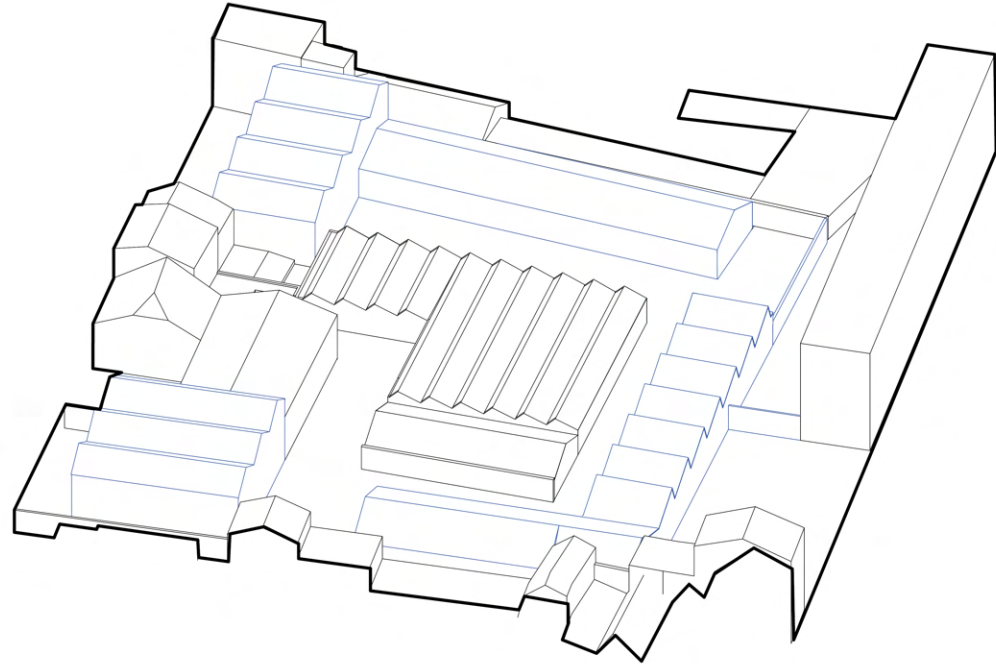


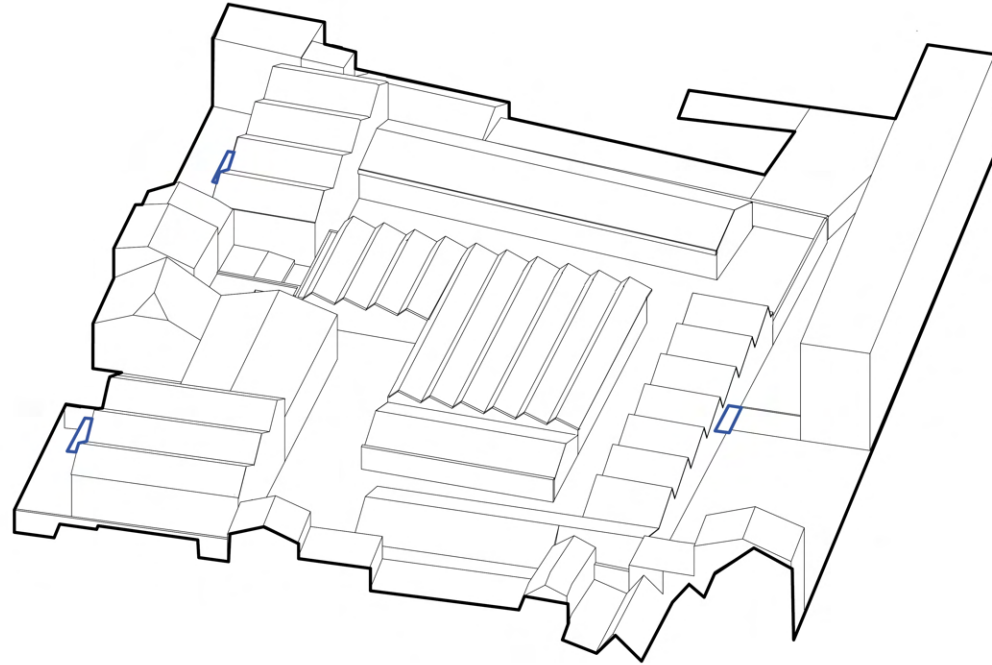


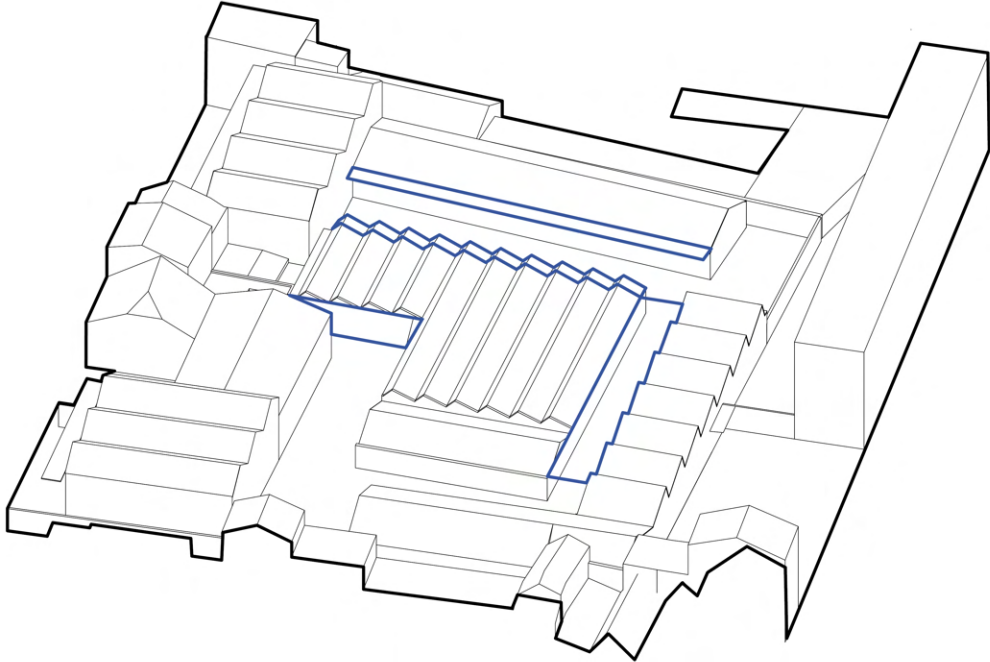








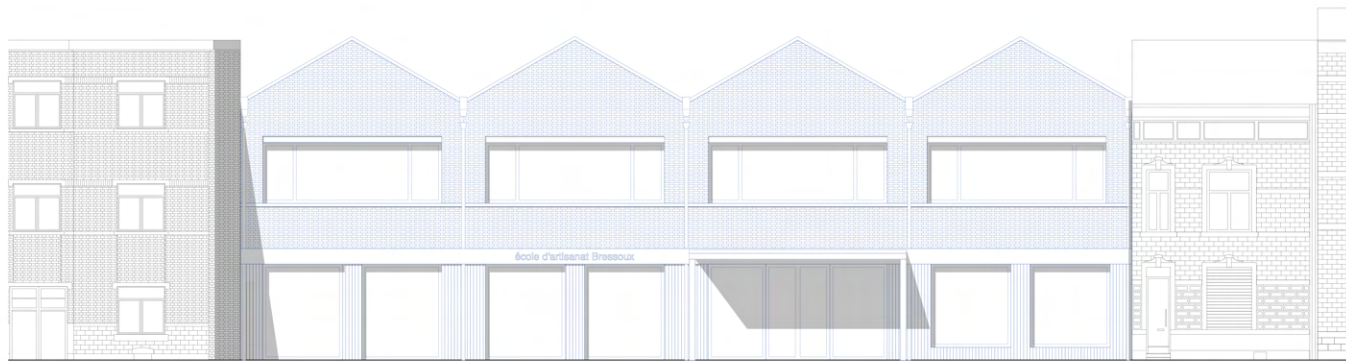






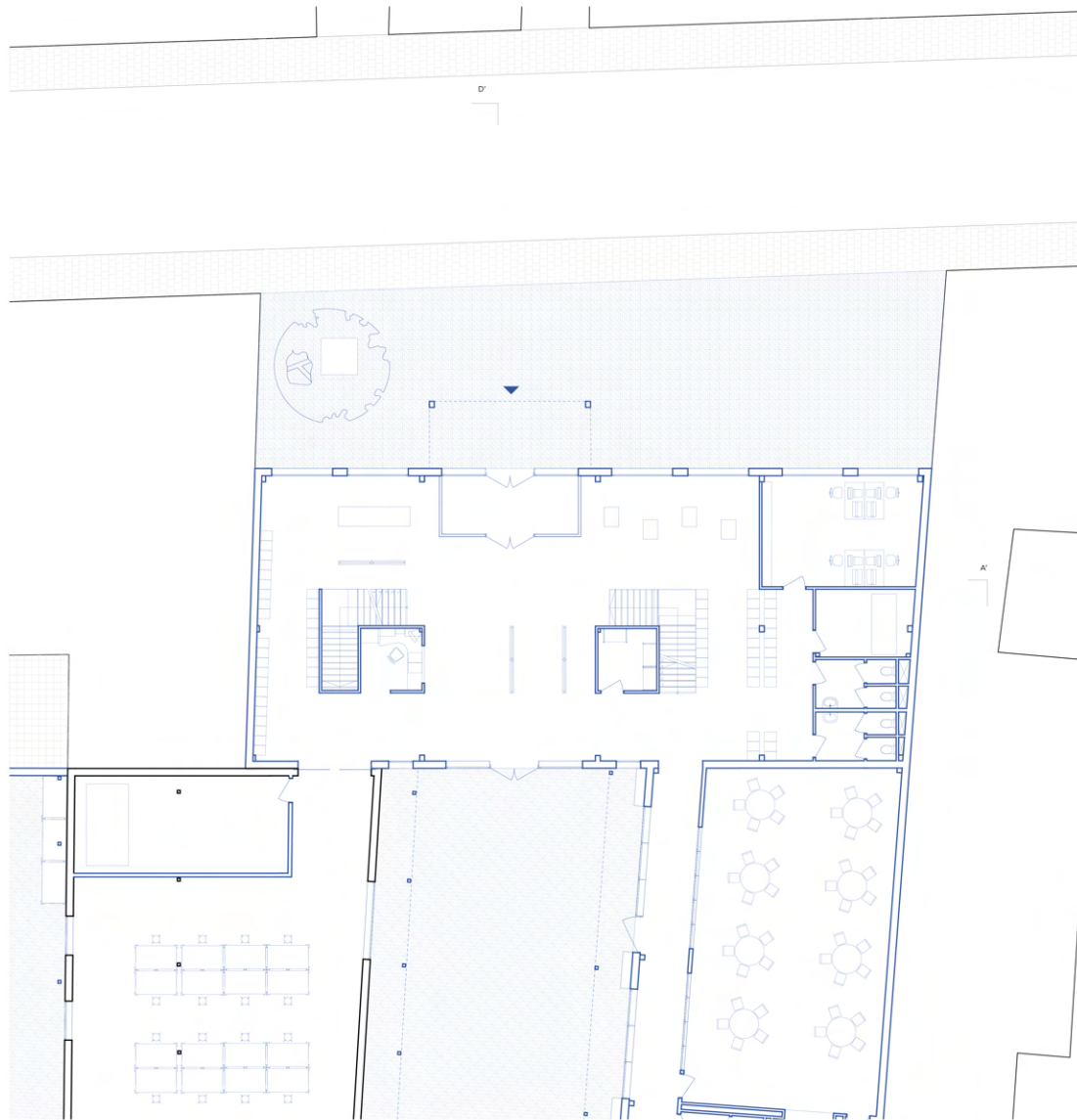
ground floor 1:100

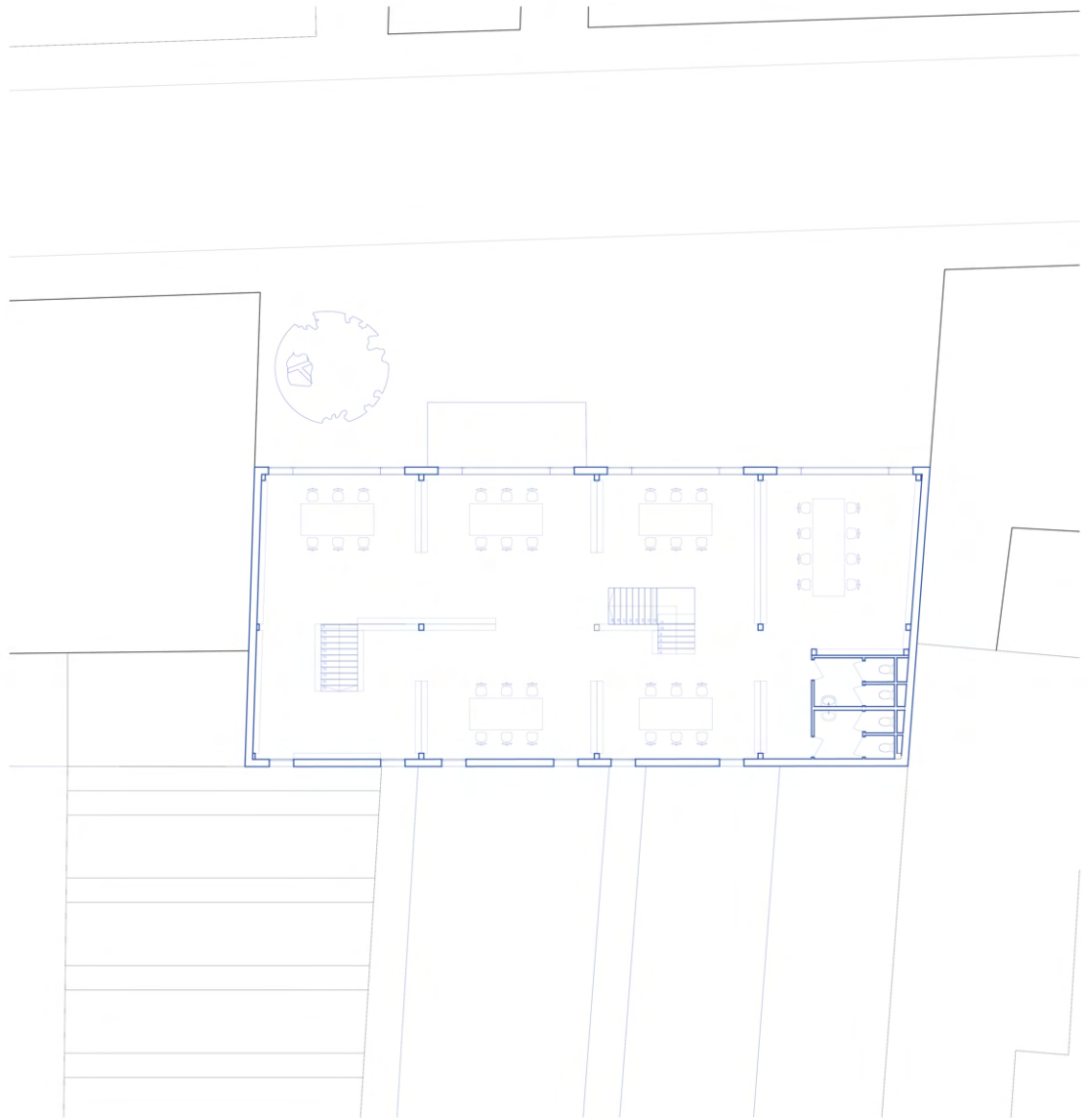




elevation entrance 1.100

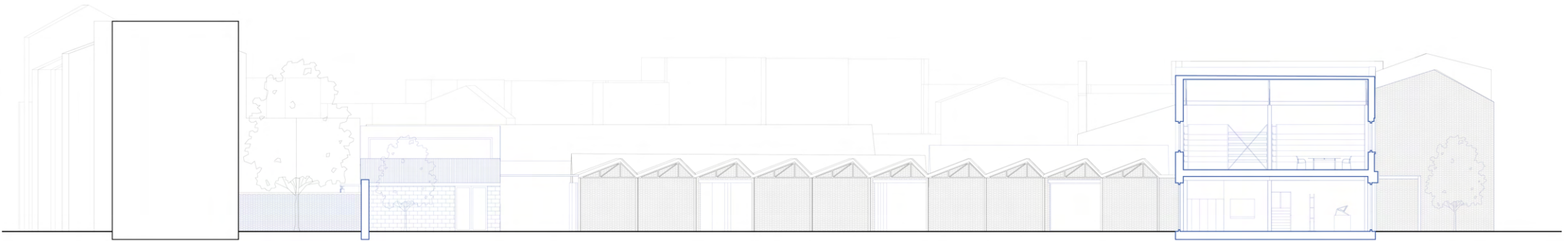
ground floor 1:100



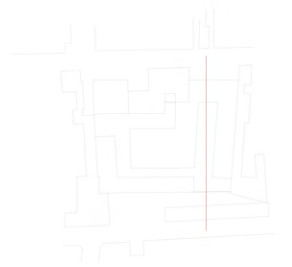


first floor 1.100

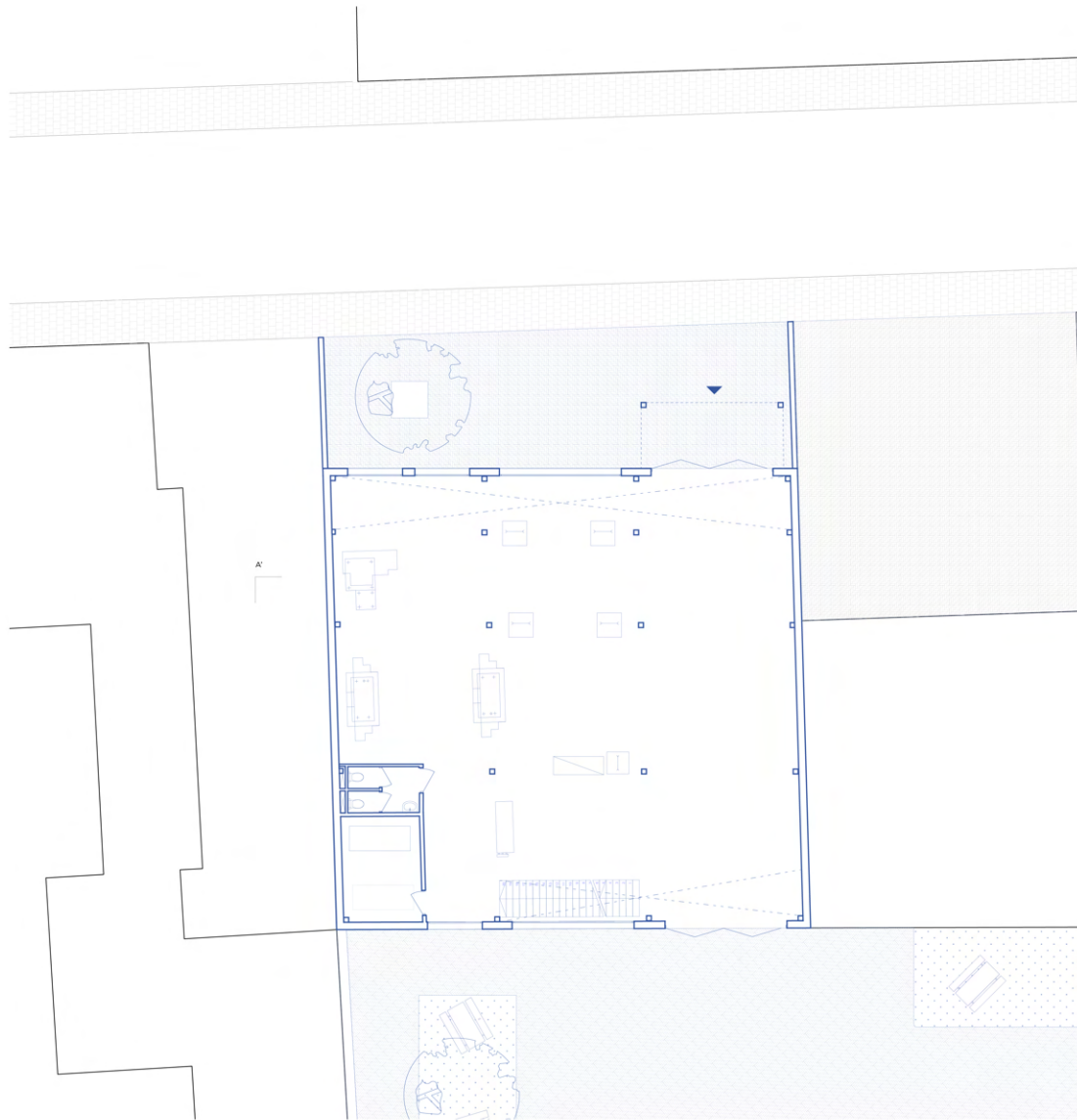




Section DD'







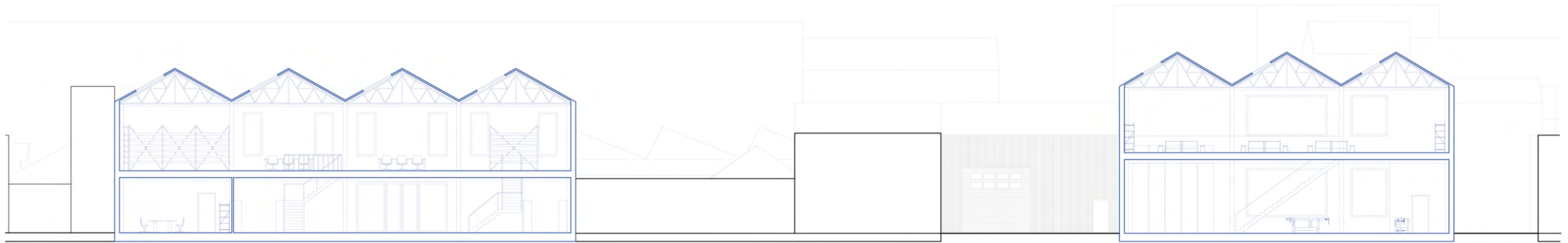
ground floor 1:100



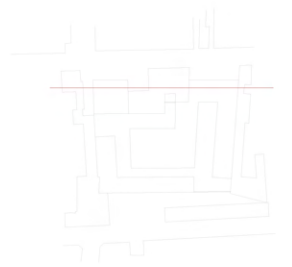


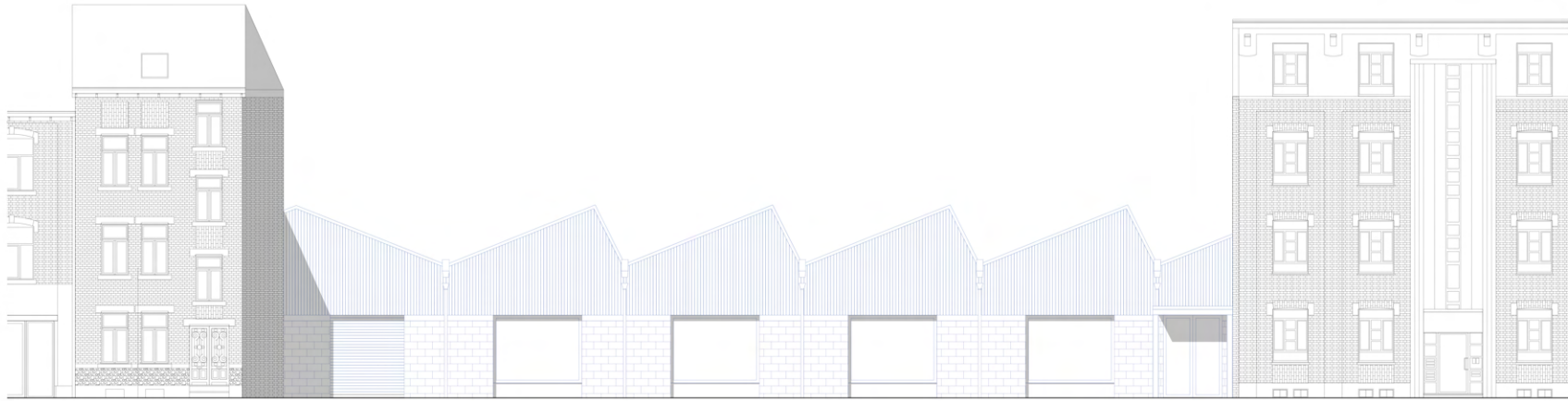
first floor 1.100

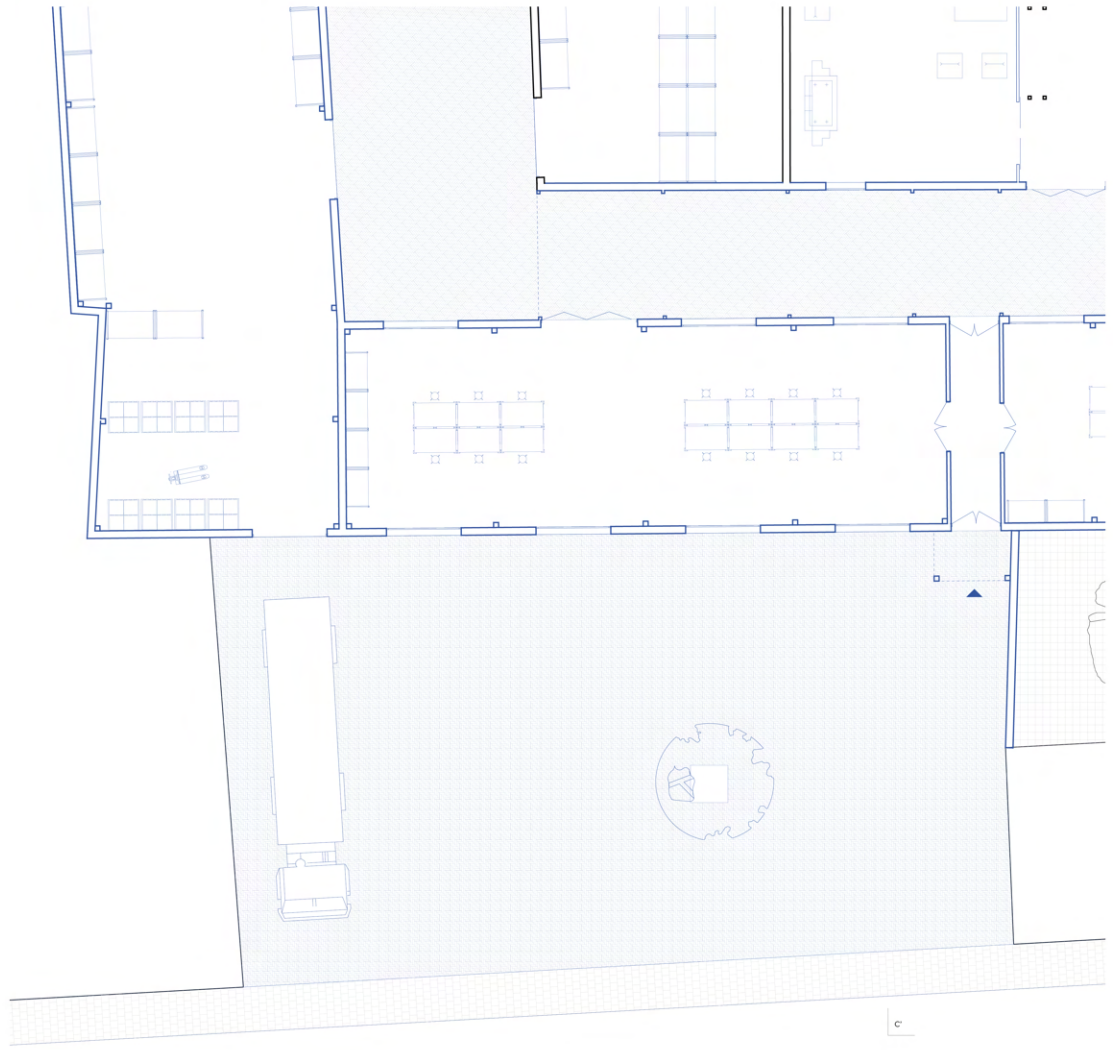




Section AA'

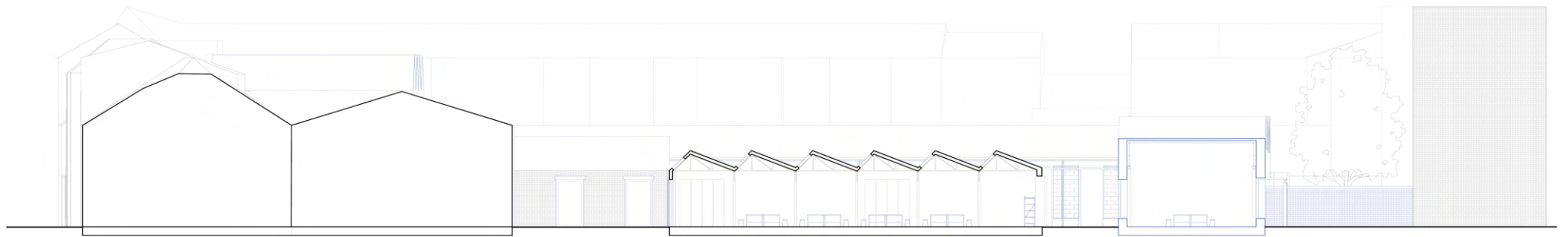




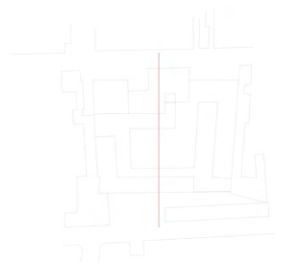


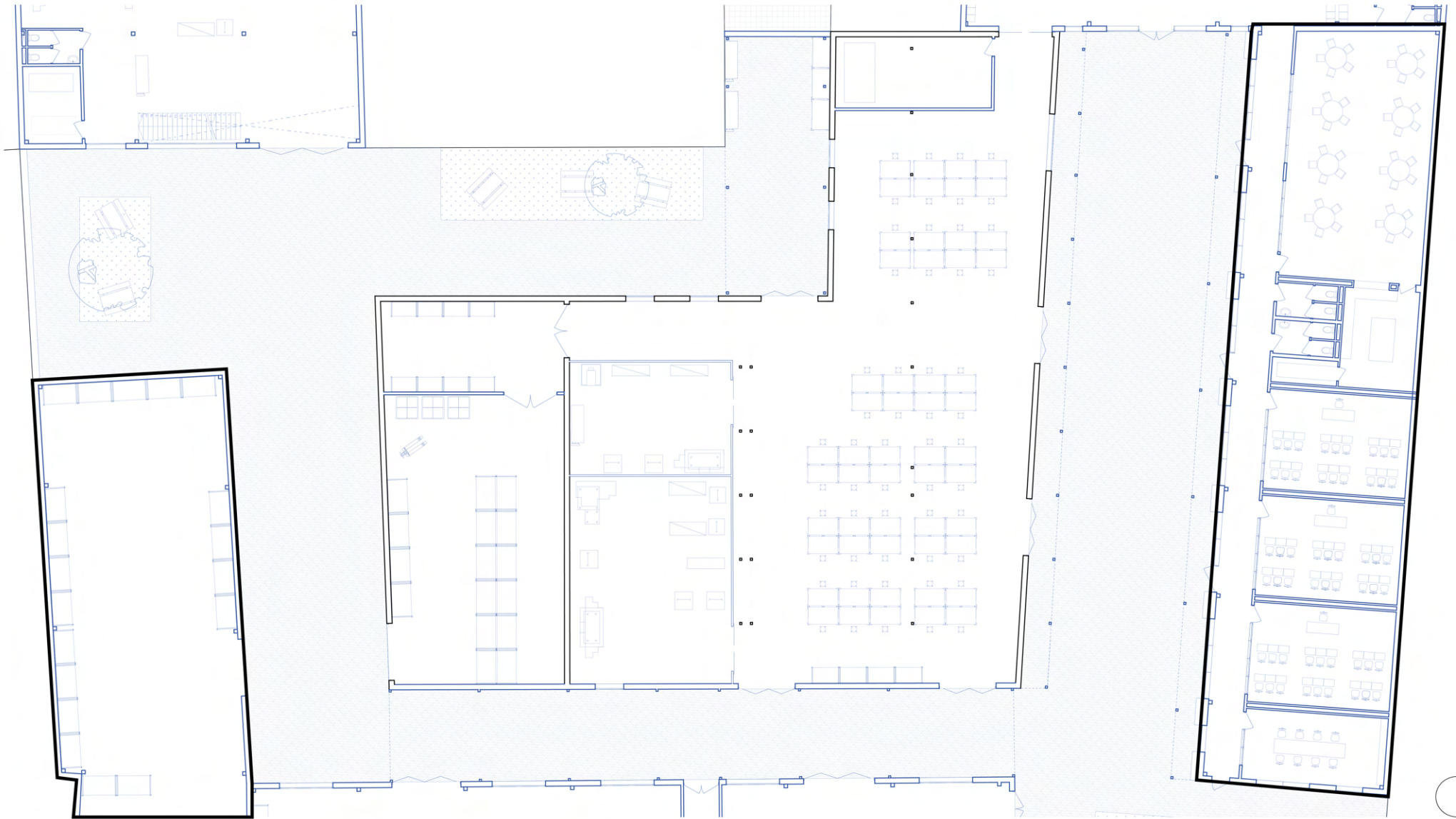
c

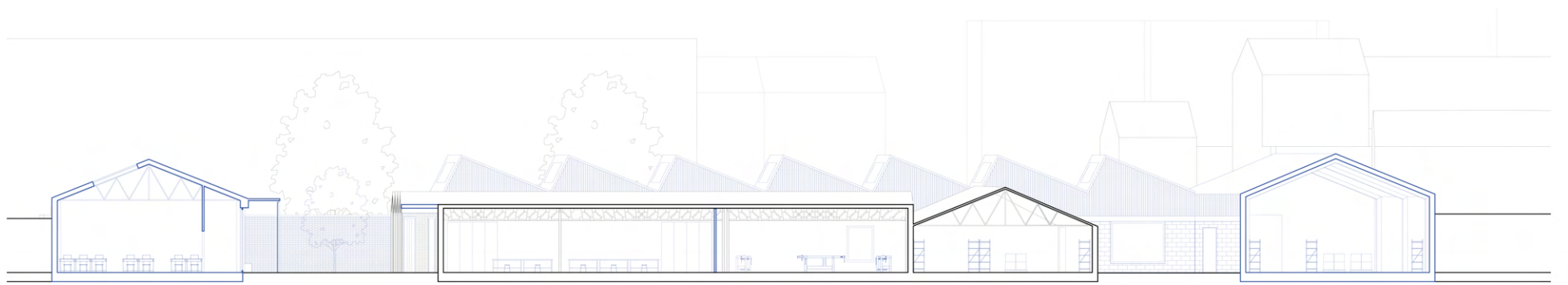




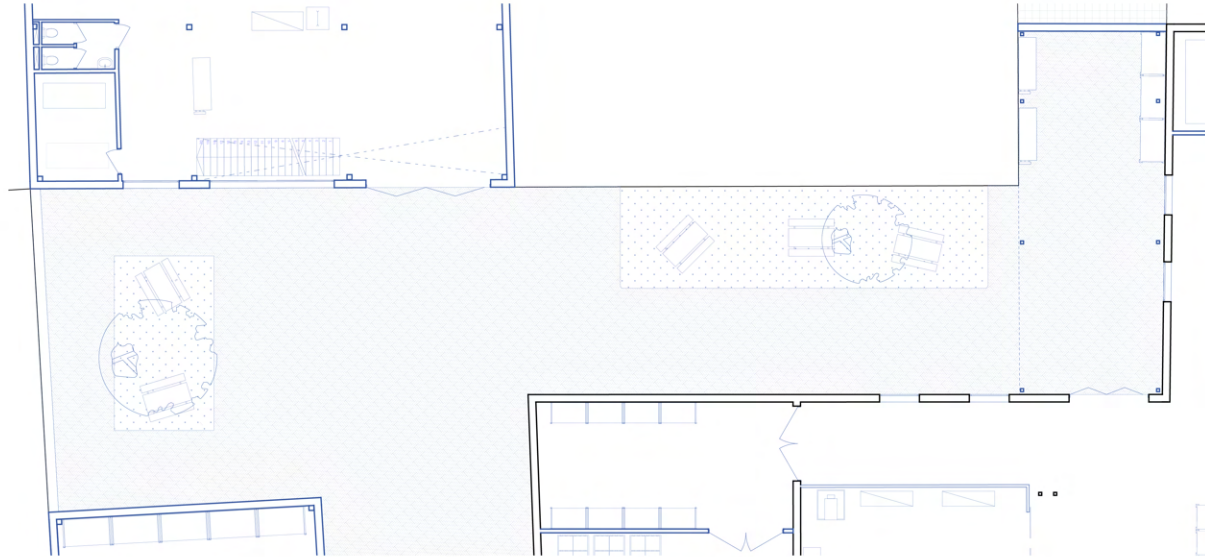
Section CC'







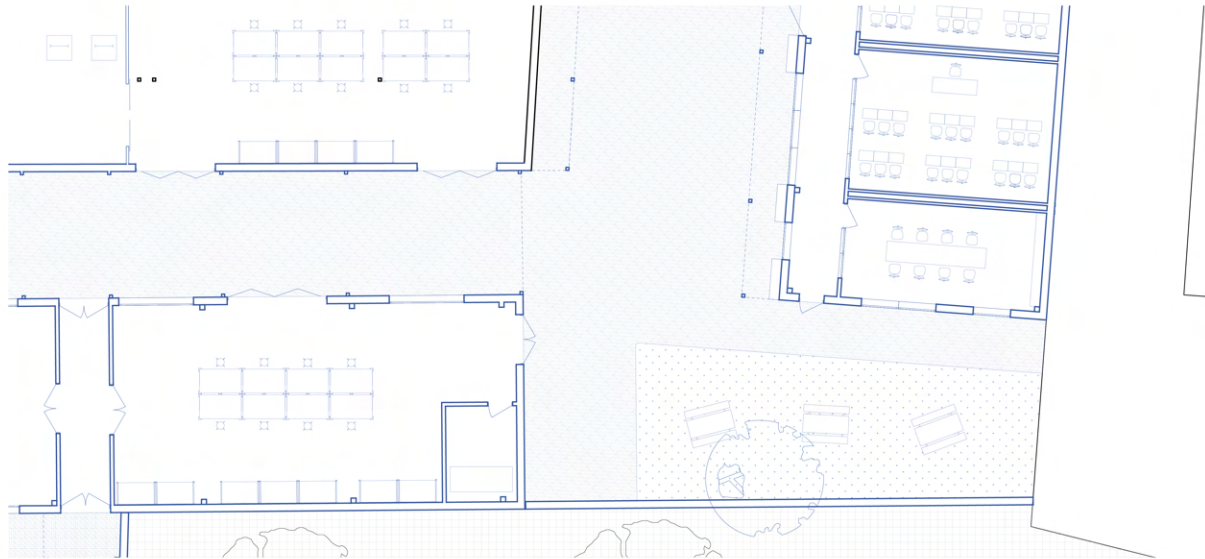
Section BB'



ground floor 1:100







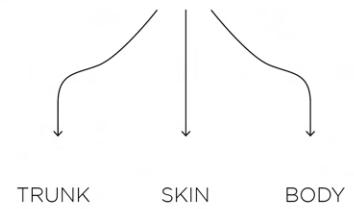
ground floor 1:100

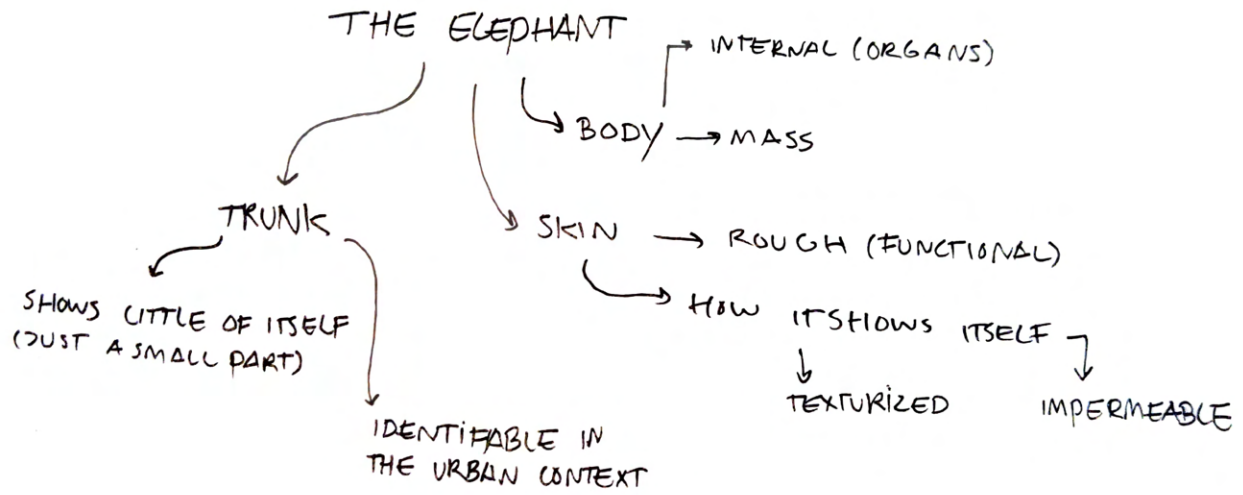


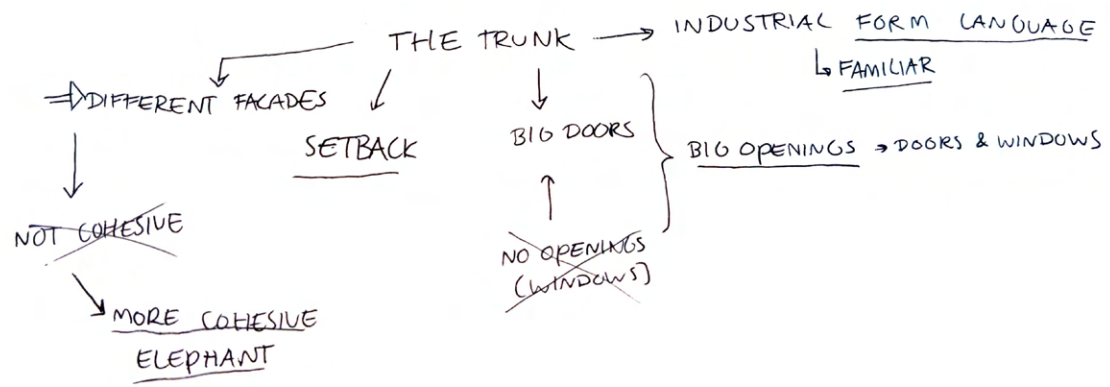


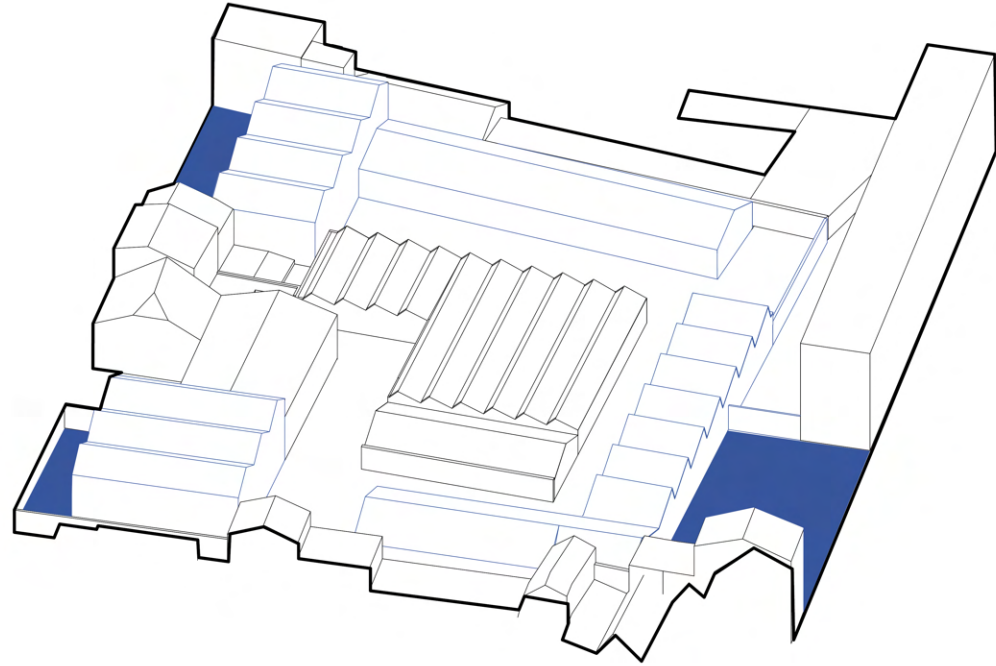
HOW DOES THE DESIGN DEALS WITH THE POST-INDUSTRIAL CITY

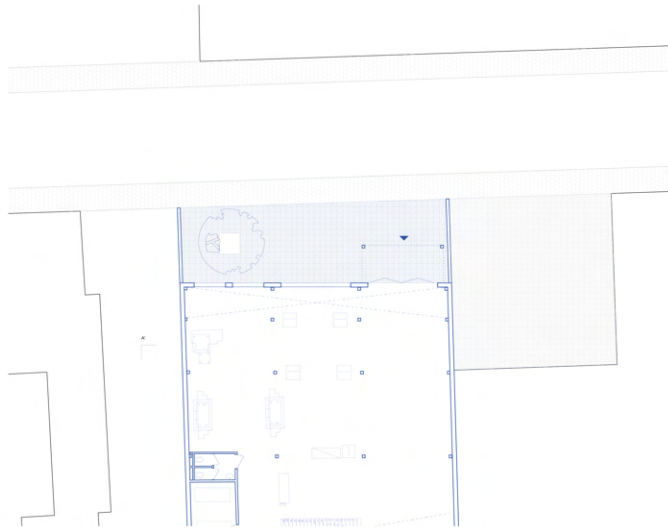
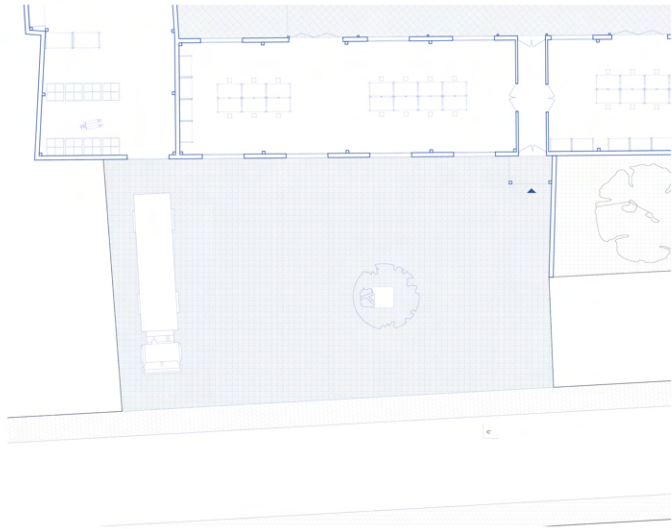
HOW DOES THE DESIGN DEAL WITH THE ELEPHANT?





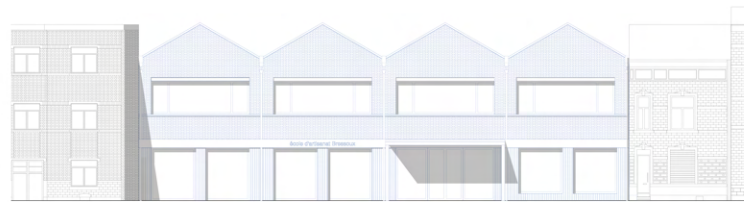
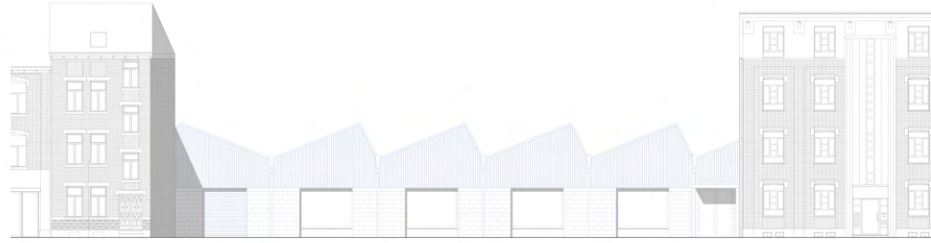






TRUNK
SKIN
BODY





TRUNK
SKIN
BODY





TRUNK
SKIN
BODY

author



author



author

TRUNK
SKIN
BODY



TRUNK
SKIN
BODY



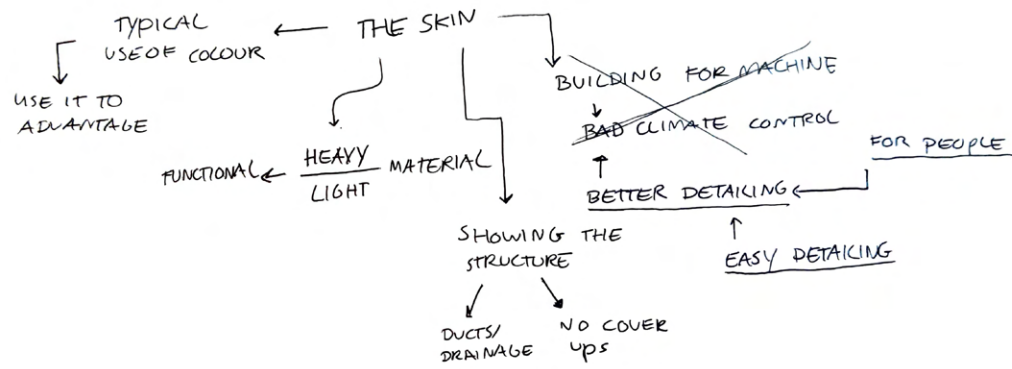
TRUNK
SKIN
BODY

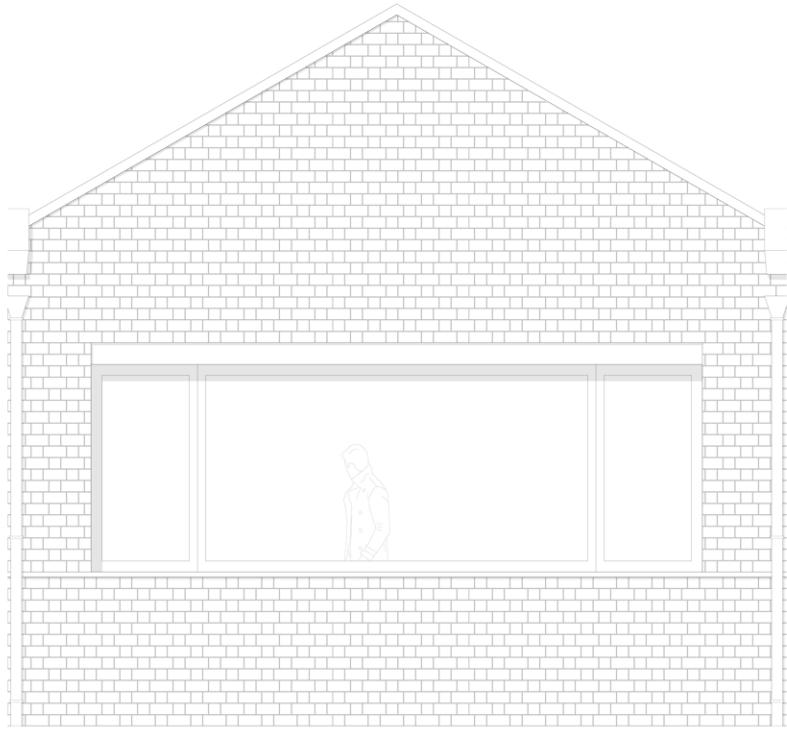




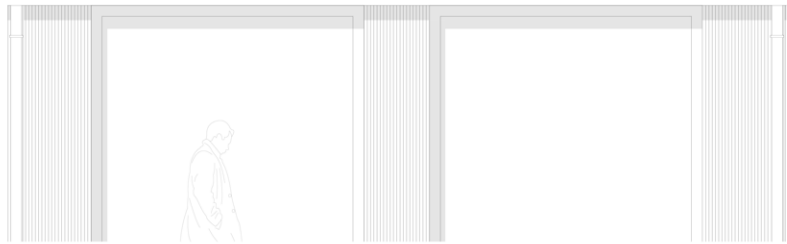
TRUNK
SKIN
BODY



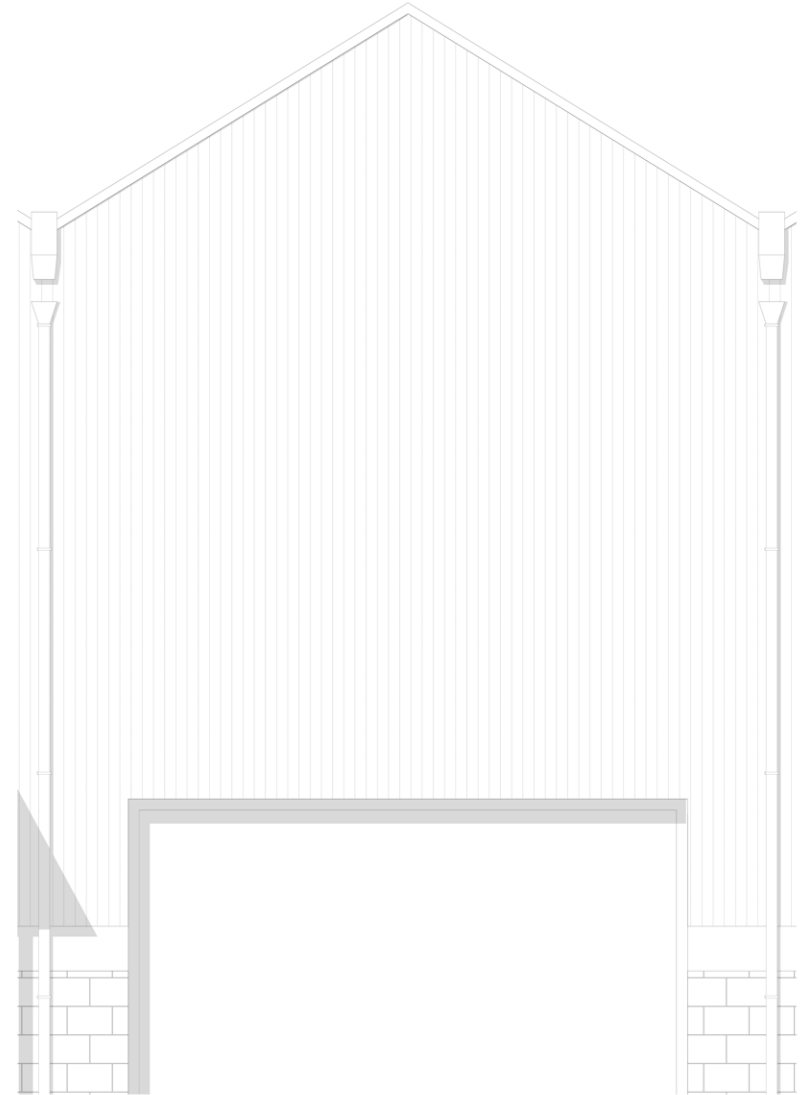


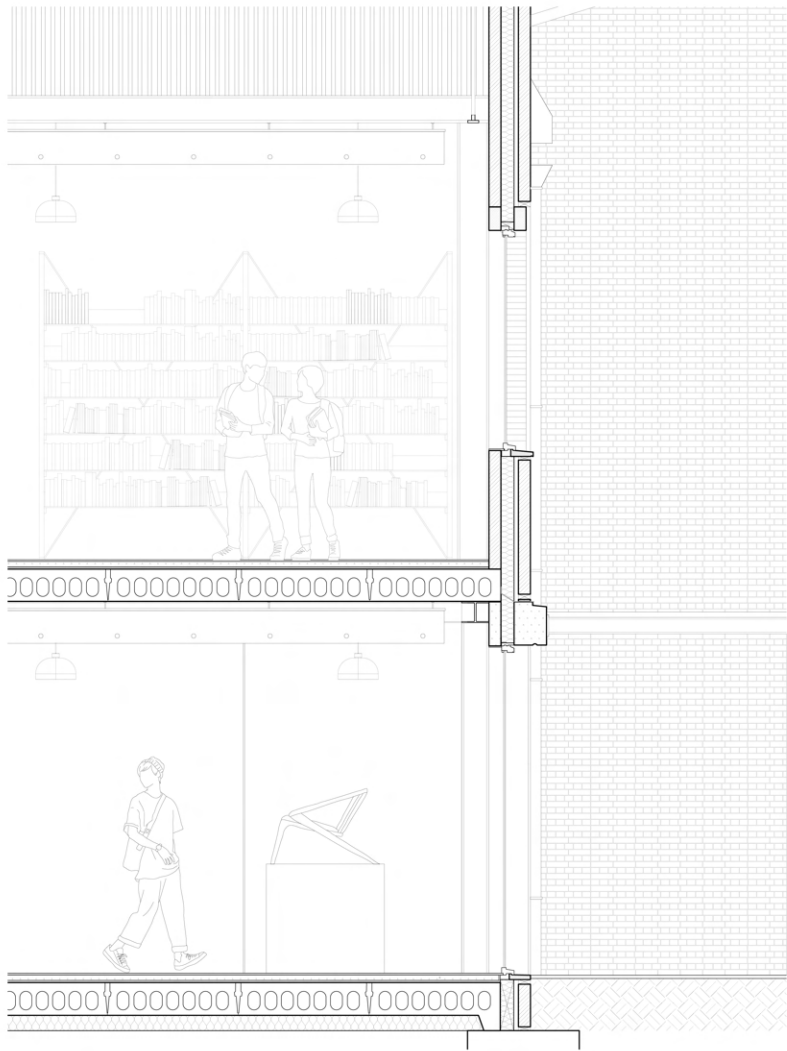


école d'artisanat Bressoux

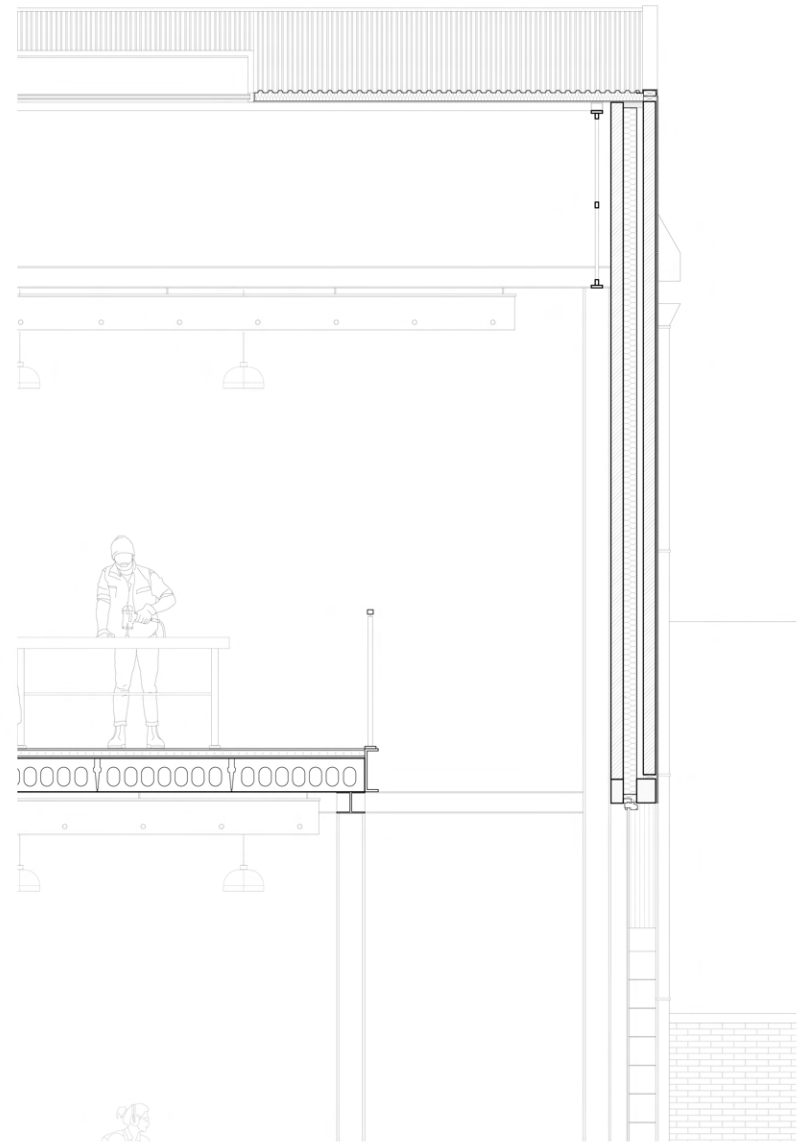


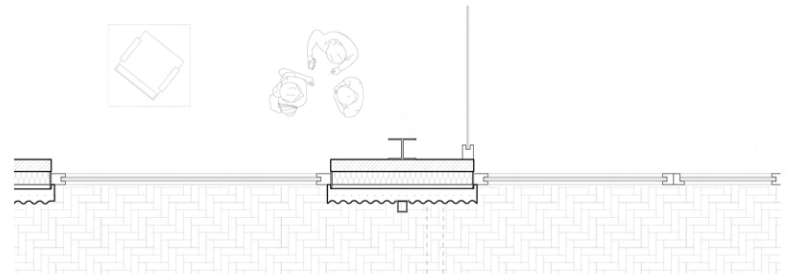
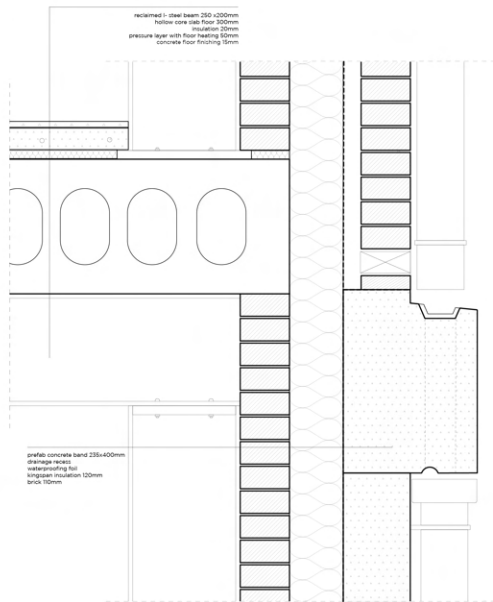
TRUNK
SKIN
BODY

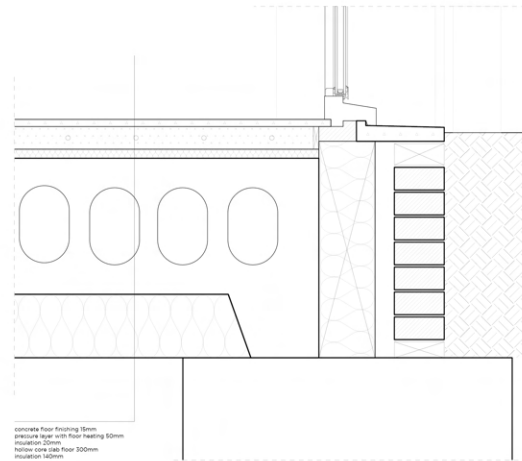
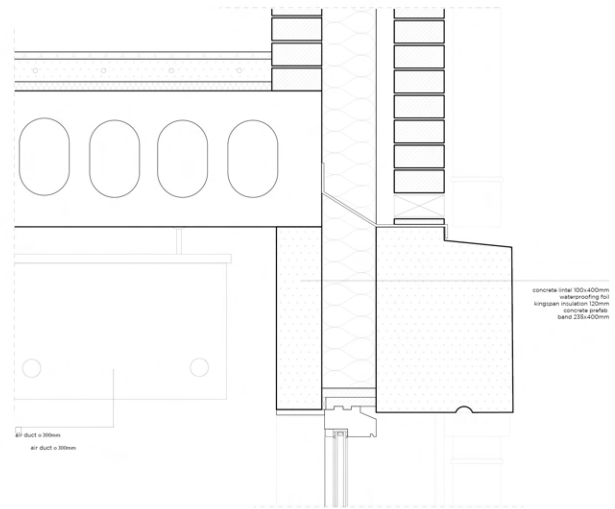


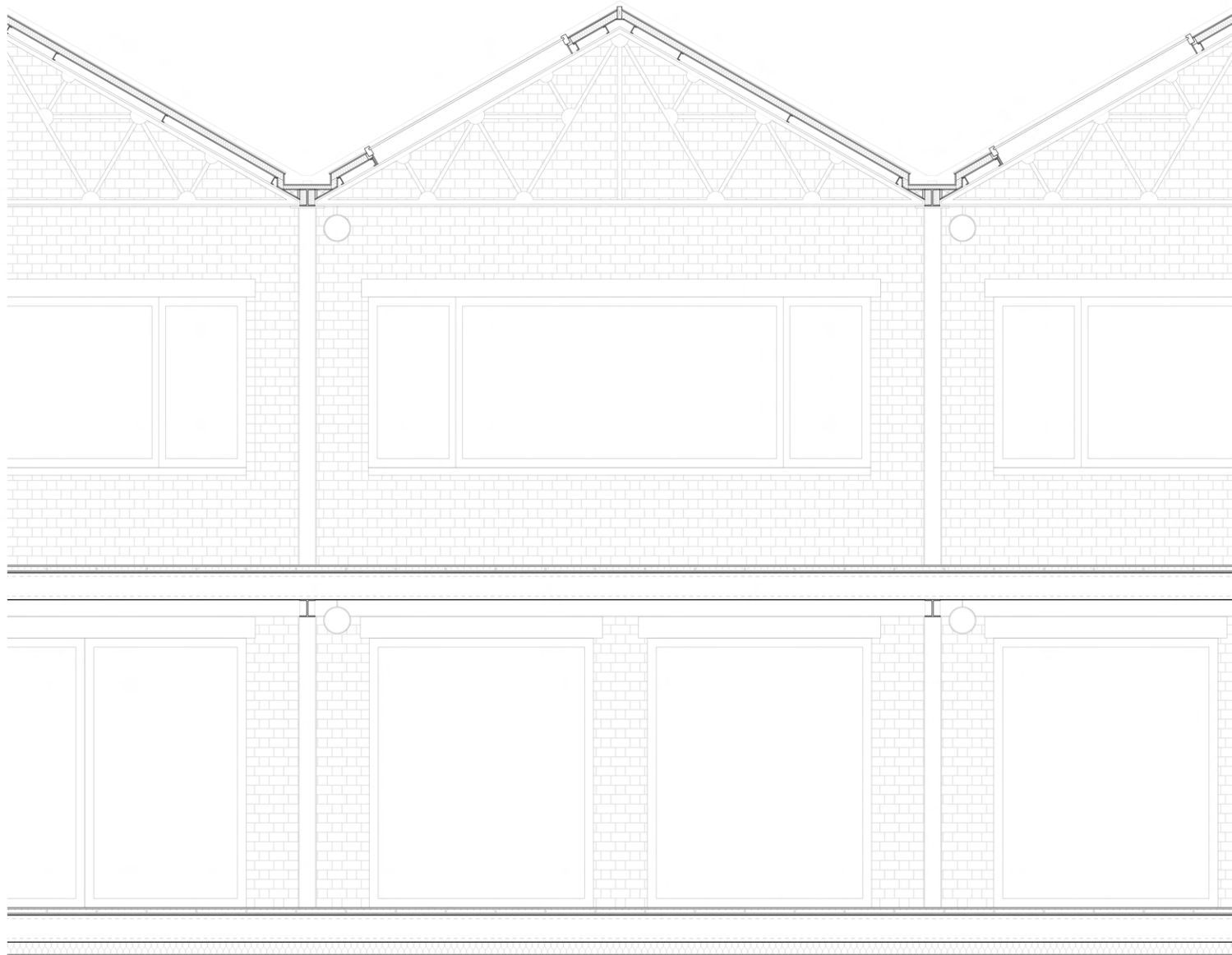


TRUNK
SKIN
BODY

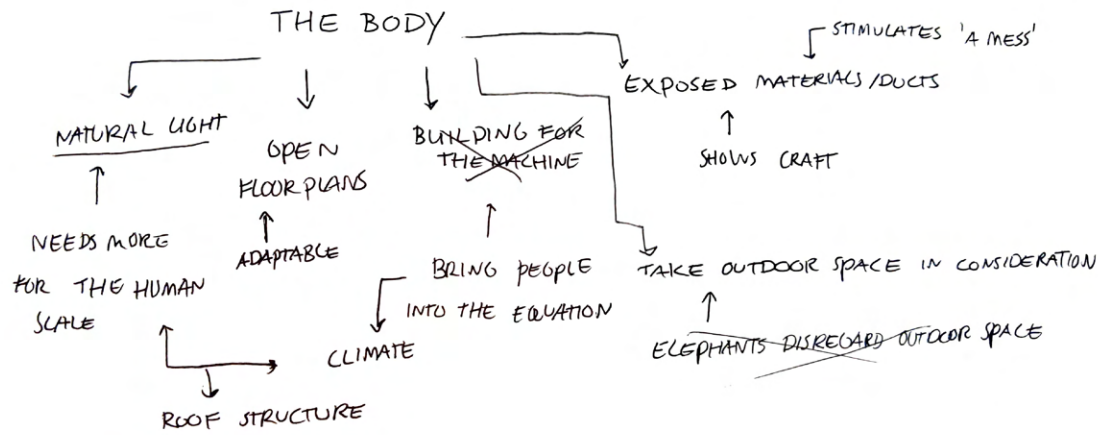


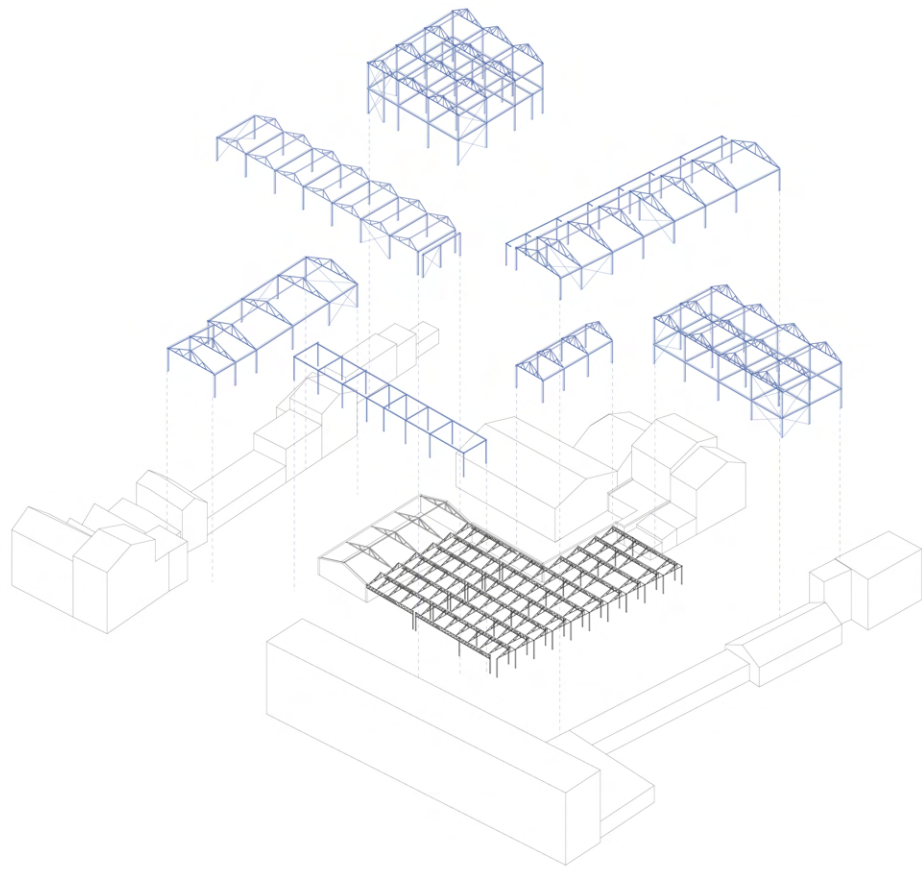




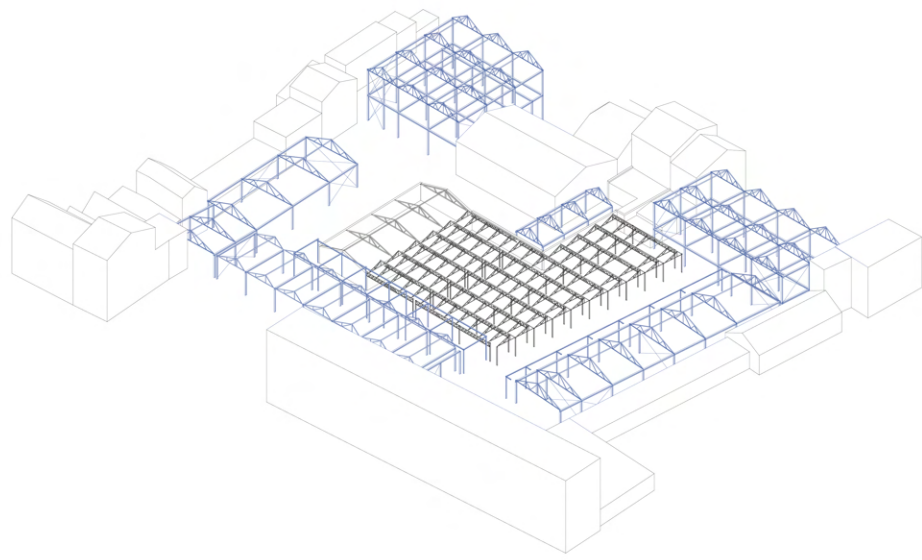


TRUNK
SKIN
BODY

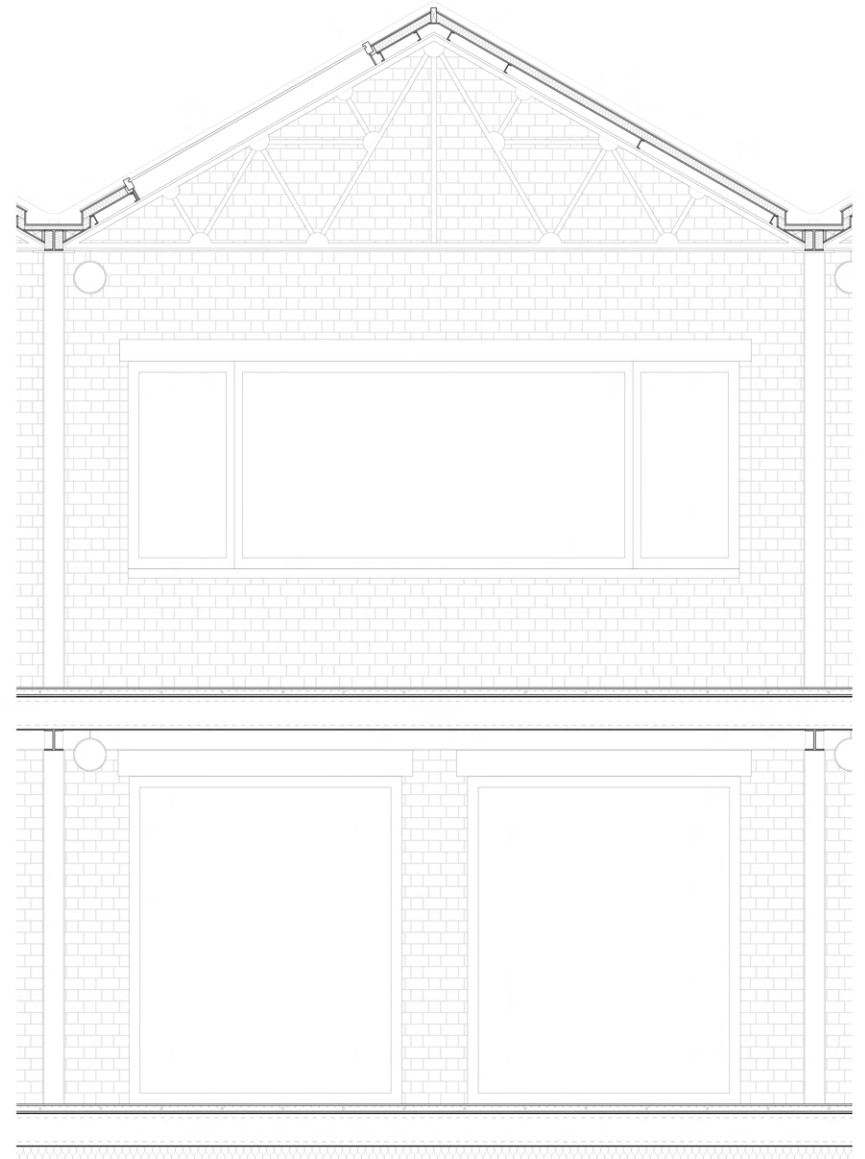
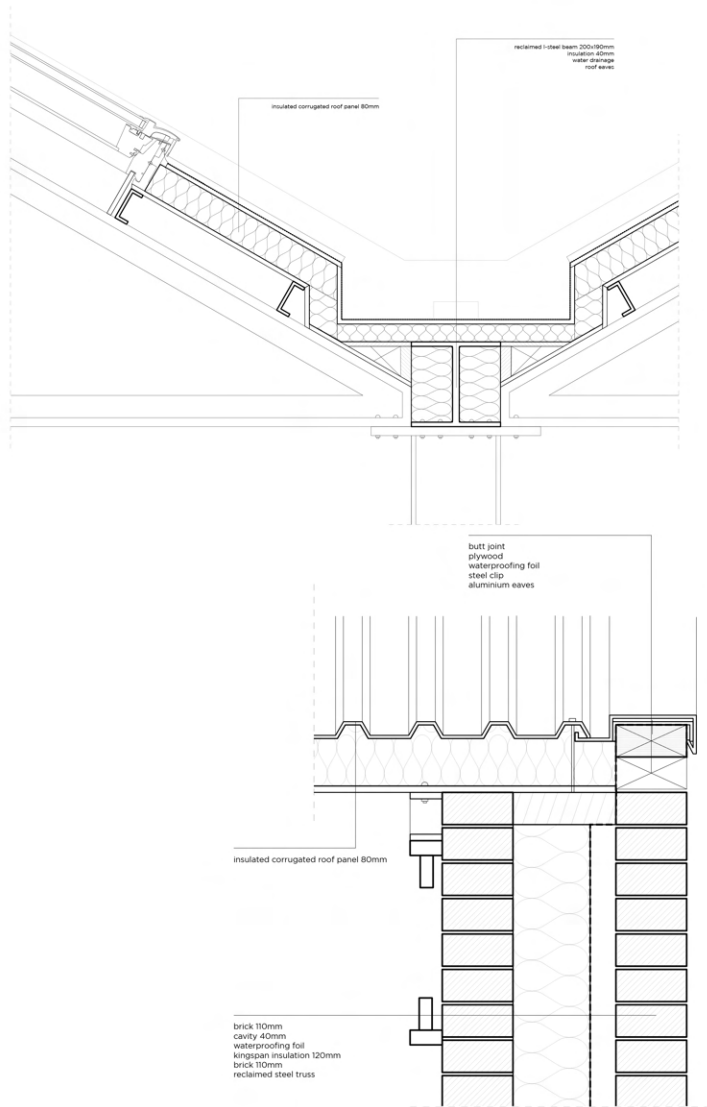




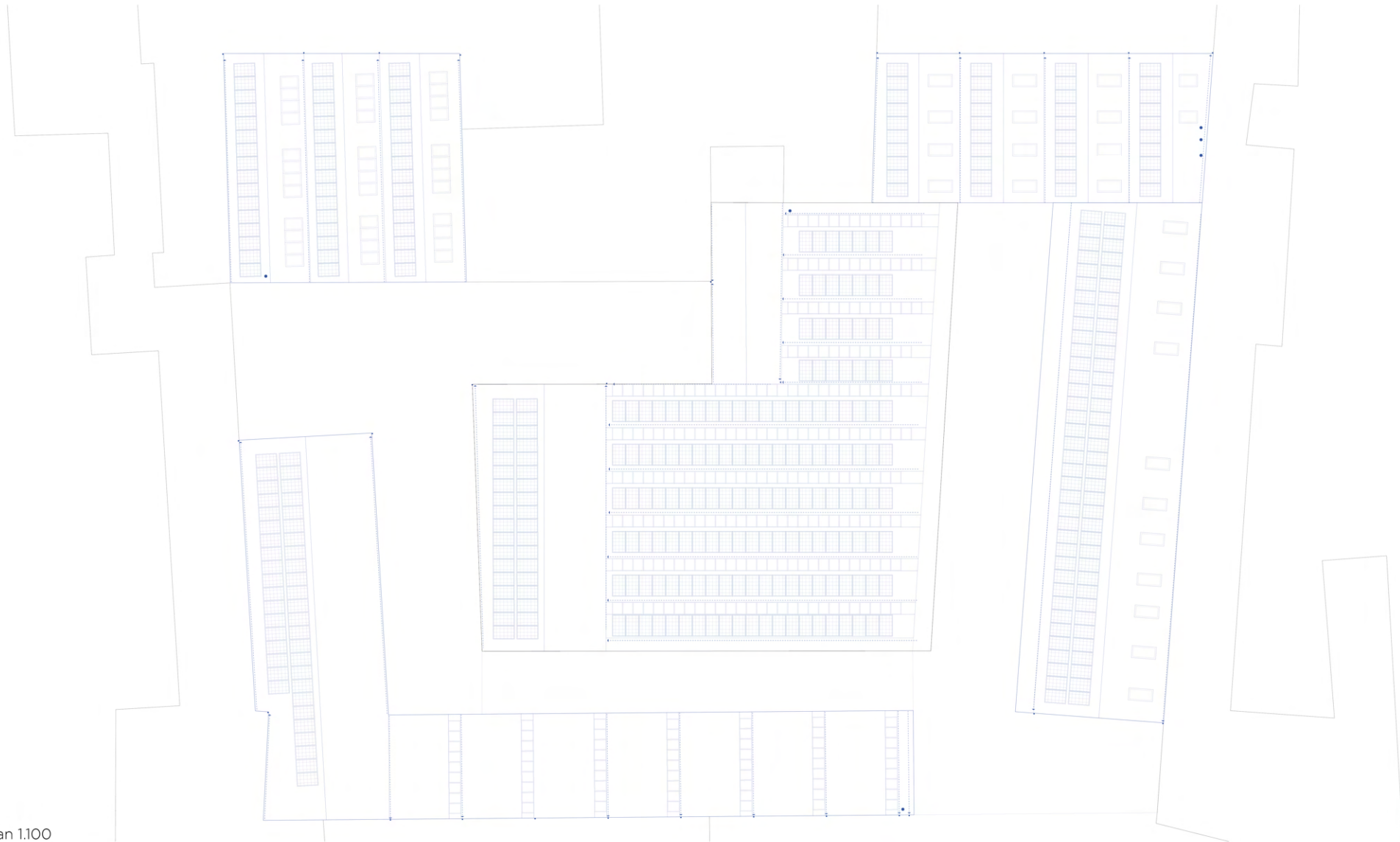
TRUNK
SKIN
BODY

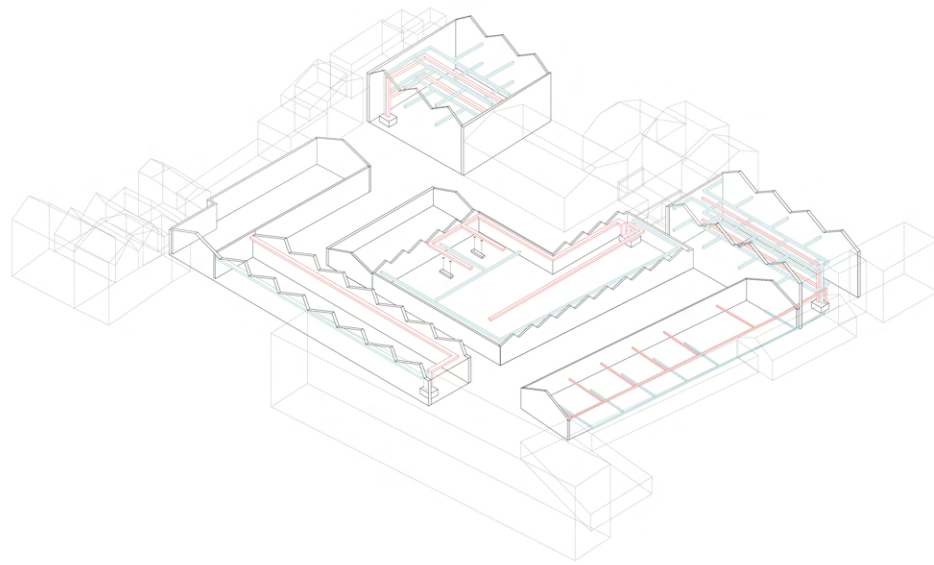


TRUNK
SKIN
BODY



TRUNK
SKIN
BODY





TRUNK
SKIN
BODY



TRUNK
SKIN
BODY

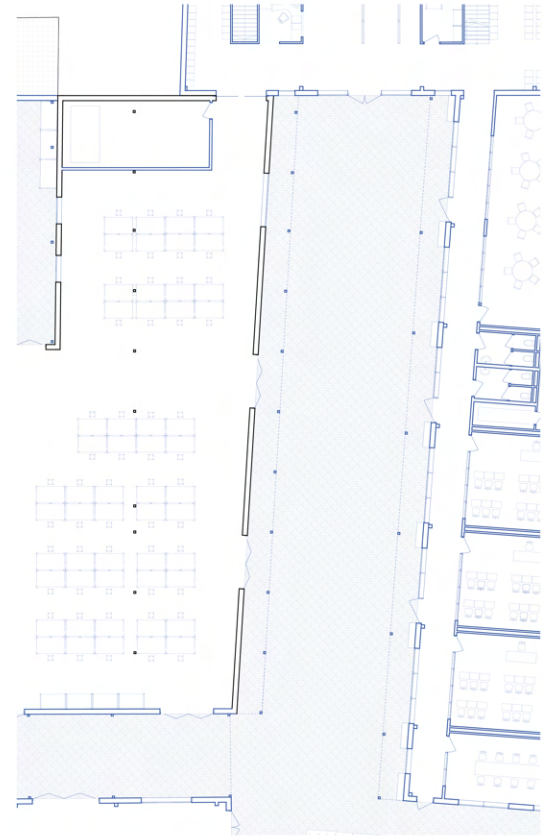
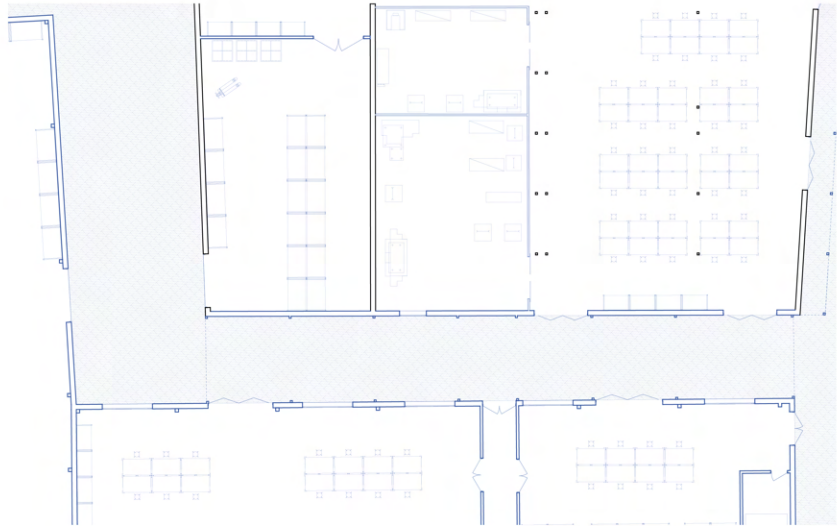


TRUNK
SKIN
BODY





TRUNK
SKIN
BODY



TRUNK
SKIN
BODY

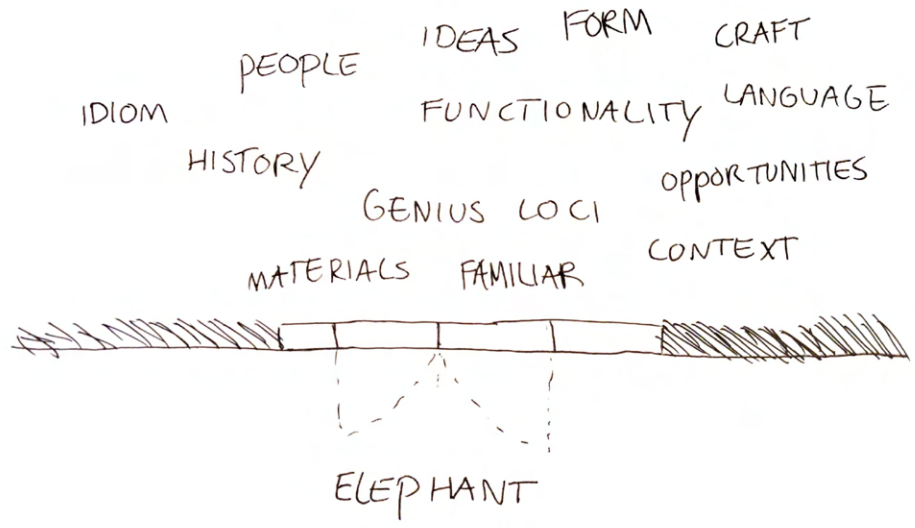




TRUNK
SKIN
BODY



TRUNK
SKIN
BODY





author



author



Bressoux, 4020 Liège, Belgium

50.64450927526535, 5.5982127220810325

0000000

