



Delft University of Technology

## Two-channel system dynamics of the outer wester estuary—a modeling study

Gundlach, Jannek; Zorndt, Anna; van Prooijen, Bram C.; Wang, Zheng Bing

**DOI**

[10.3390/jmse9040448](https://doi.org/10.3390/jmse9040448)

**Publication date**

2021

**Document Version**

Final published version

**Published in**

Journal of Marine Science and Engineering

**Citation (APA)**

Gundlach, J., Zorndt, A., van Prooijen, B. C., & Wang, Z. B. (2021). Two-channel system dynamics of the outer wester estuary—a modeling study. *Journal of Marine Science and Engineering*, 9(4), Article 448. <https://doi.org/10.3390/jmse9040448>

**Important note**

To cite this publication, please use the final published version (if applicable). Please check the document version above.

**Copyright**

Other than for strictly personal use, it is not permitted to download, forward or distribute the text or part of it, without the consent of the author(s) and/or copyright holder(s), unless the work is under an open content license such as Creative Commons.

**Takedown policy**

Please contact us and provide details if you believe this document breaches copyrights. We will remove access to the work immediately and investigate your claim.

Article

# Two-Channel System Dynamics of the Outer Weser Estuary—A Modeling Study

Jannek Gundlach <sup>1,\*</sup> , Anna Zorndt <sup>2</sup>, Bram C. van Prooijen <sup>3</sup>  and Zheng Bing Wang <sup>3,4</sup> 

<sup>1</sup> Ludwig-Franzius-Institute for Hydraulic, Estuarine and Coastal Engineering, Leibniz University Hannover, 30167 Hanover, Germany

<sup>2</sup> Federal Waterways Engineering and Research Institute (BAW), 22559 Hamburg, Germany; anna.zorndt@baw.de

<sup>3</sup> Faculty of Civil Engineering and Geosciences, Delft University of Technology, 2628 CN Delft, The Netherlands; B.C.vanProoijen@tudelft.nl (B.C.v.P.); z.b.wang@tudelft.nl (Z.B.W.)

<sup>4</sup> Deltares, P.O. Box 177, 2600 MH Delft, The Netherlands

\* Correspondence: gundlach@lufi.uni-hannover.de

**Abstract:** In this paper, we unravel the mechanisms responsible for the development of the two-channel system in the Outer Weser Estuary. A process-based morphodynamic model is built based on a flat-bed approach using simplified boundary conditions and accelerated morphological development. The results are analyzed in two steps: first, by checking for morphodynamic equilibrium in the simulations and second, by applying a newly developed method that interprets simulations based on categorization of the two-channel system and cross-sectional correlation analysis. All simulations reach a morphodynamic equilibrium and develop two channels that vary considerably over time and between the simulations. Variations can be found in the location and depth of the two channels, the development of the dominant channel over time and the alteration in the dominance pattern. The conclusions are that the development of the two-channel system is mainly caused by the tides and the basin geometry. Furthermore, it is shown that the alternation pattern and period are dependent on the dominance of the tides compared to the influence of river discharge.

**Keywords:** morphodynamics; Delft3D; long-term; two-channel



**Citation:** Gundlach, J.; Zorndt, A.; van Prooijen, B.C.; Wang, Z.B. Two-Channel System Dynamics of the Outer Weser Estuary—A Modeling Study. *J. Mar. Sci. Eng.* **2021**, *9*, 448. <https://doi.org/10.3390/jmse9040448>

Academic Editors: Pushpa Dissanayake, Jenifer Brown and Marissa Yates

Received: 10 March 2021  
Accepted: 15 April 2021  
Published: 20 April 2021

**Publisher's Note:** MDPI stays neutral with regard to jurisdictional claims in published maps and institutional affiliations.



**Copyright:** © 2021 by the authors. Licensee MDPI, Basel, Switzerland. This article is an open access article distributed under the terms and conditions of the Creative Commons Attribution (CC BY) license (<https://creativecommons.org/licenses/by/4.0/>).

## 1. Introduction

The Weser estuary is one of the four estuaries in the German Bight. Its morphological pattern is characterized by a distinctive two-channel system in the Outer Weser part. This characteristic is relevant for the navigational access to the ports of Bremen and Bremerhaven [1]. In the late 19th century, a combination of increased navigational depth requirements and the limitation of navigational space due to morphological alternations [2] led to the construction of training walls and groynes [3,4] plus capital dredging [5]. Those anthropogenic interventions minimized the natural fluctuations in the position and dimensions of the two-channel system and permanently constrained the marine traffic to the main channel.

Morphology of estuaries and tidal inlet is governed by a complex combination of influences [6]. Roelvink and Reniers [7] question the scale/degree to which an estuarine bathymetry is forced by its own boundaries, such as dikes, headlands, unerodable layers, natural or man-made constraints. The most intrusive bathymetrical pattern is the appearance of tidal channels and shoals. Each estuary and tidal inlet has an individual arrangement of tidal features based on its forcing [8]. Nevertheless, large-scale features, such as the main channel(s), dividing shoals or branching side-channels, can be found commonly [9,10].

The advances in numerical modeling software [10–13] and rising computational capacity allow detailed morphodynamic investigations [7,14] and long-term morphodynamic simulations [15–17]. With these capacities given, it is now feasible to investigate reasons of the development of a two-channel system and morphodynamic alternations.

Contrary to systems like the Western Scheldt [18,19], not many numerical studies about the morphodynamics of the Weser Estuary have been published. Herrling et al. [20] investigated the present morphodynamics of the Weser Estuary with Delft3D, focusing on present day morphodynamics by assessing the feedback of sub- and intertidal area to the hydrodynamic drivers. Recently, the studies of Hesse [21] and Lojek [22] applied Delft3D for the Weser Estuary dealing with the estuarine turbidity maximum and storm surge influence on critical infrastructure, respectively. Models for simulation of sediment transport dynamics are used by the German Federal Waterways Engineering and Research Institute for environmental impact assessments, but these studies are seldomly published. For example, Kösters and Winter [23] used the model system Untrim [24] to simulate the transport of cohesive sediment of the Weser.

The key characteristic of the Weser Estuary is the two-channel system. The cause for this and its development is, however, poorly understood. Due to the many man-made interventions, an investigation of the natural behavior cannot be based on observations in the last century. Numerical modeling can, however, be used to explore the morphological development of the two-channel system by natural forcing. By imposing various forcing conditions, we can identify the mechanisms that are responsible for the two-channel system.

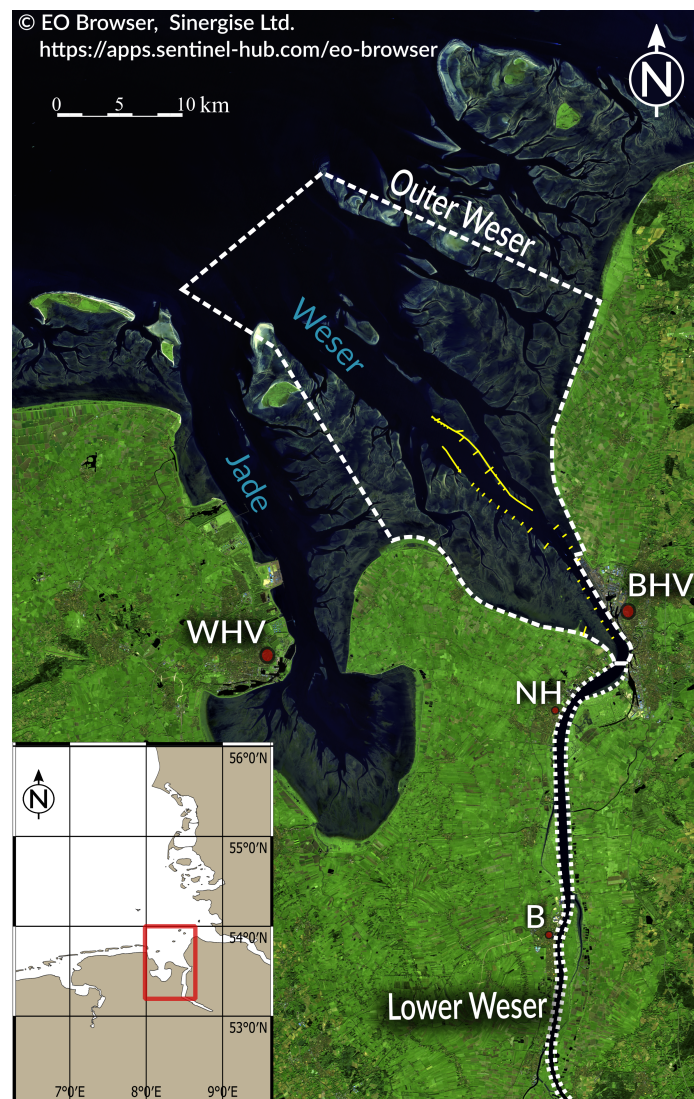
Previous studies have focused on the schematic reproduction of the natural long-term morphodynamic development of channels in geometrically constrained estuaries [18,19,25]. However, the Weser Estuary is different, as it is geometrically less constrained. The spatial range of possible channel patterns is larger and less intuitive. The aim of this study is to get insight into the driving factors responsible for the development and location of the two-channel system in the Outer Weser Estuary.

In order to achieve the defined goals of this study, three research questions are addressed:

1. Do, and if so, when do the simulations of the morphodynamics of the Weser estuary reach a morphological equilibrium?
2. Do two channels develop in the simulations, and if so, where (west vs. middle vs. east)?
3. Is one of the channels more dominant than the other and does it switch over time?

### *Study Area*

The Weser estuary is one of the four German estuaries and is located in the German Bight. The estuarine part of the Weser is divided into the landward Lower Weser and the seaward Outer Weser and marks the entrance to the ports of Bremerhaven, Nordenham, Brake and Bremen (Figure 1). The freshwater discharge at the southern side has an annual average of 325 m<sup>3</sup>/s and is rather constant over time. The Lower Weser is relatively narrow, while the Outer Weser shows a funnel shape that opens wide in the northwestern direction toward the North Sea. The sediments in the Outer Weser are mainly composed of fine sand, mixed with 5–20% of silt and clay at the surrounding tidal flats and locally, on the tidal flats close to the coastline, fine sand is mixed with >50% clay and silt (Geopotenzial Deutsche Nordsee [26]). The channel of the Lower and Outer Weser are mainly composed of fine and medium sand [27]. The estuarine morphology of the Weser shows the remarkable two-channel system in the Outer Weser and is still changing continuously [3]. Adjacently located to the Weser estuary is the Jade Bay, an almost parallel tidal inlet with no significant freshwater discharge. The Weser estuary channels are used for navigational purposes. In the past, the two-channel system showed a more pronounced main channel and a side channel with alternating behavior. For navigational purposes, starting 1917, training walls and groynes were constructed (indicated in yellow in Figure 1), stopping the alternation between the two channels and marking the end of a natural two-channel system [2,28]. These changes result in intensive maintenance dredging activities [29]. The constructions, channel deepening and maintenance dredging led to an increase of the tidal range from 0.3 m to almost 4 m at Bremen-Vegesack [28]. More information about the historical phenomena, the natural behavior and human interventions can be found in [2,4,28,30].



**Figure 1.** The Weser Estuary divided into the Outer Weser the Lower Weser and the adjacent Jade Bay. The cities of Bremerhaven (BHV), Nordenhamm (NH), Brake (B) and Wilhelmshaven (WHV) are indicated on the map for reference. The small map (Open Street Map) gives the location of the Weser Estuary in the German Bight and the satellite image taken from Copernicus Sentinel-2 (ESA) shows the present channel and shoal pattern in the Outer Weser with the constructed training walls and groynes marked in yellow.

## 2. Materials and Methods

### 2.1. The Flat-Bed Approach

Process-based flat-bed models have been widely applied for the production of channel and shoal patterns in tidal inlets and geometrically constrained estuaries [16,18,19,31]. This study differs from the previous ones in the sense that a wide estuary is modeled here and the applied model is steered by simplified boundary conditions.

In the application of a schematized Delft3D model, special attention is paid to the initiation of the model. For undisturbed natural morphological development, the influence of a discrete bathymetry needs to be minimized in order to allow unconstrained development. This is achieved by applying a flat bed as initial bathymetry [18,19]. The estuarine geometry is based on the available historical charts and kept fixed for the base case simulation.

## 2.2. Sediment Transport Formulation

In this study, Delft3D [32] is applied. Delft3D is a process-based model, including the FLOW- (for hydrodynamics) and MOR- (for morphodynamics) modules, which are essential for this study. The Delft3D-FLOW module is based on the Reynolds-averaged Navier–Stokes equations under the assumption of incompressible fluids, shallow water and Boussinesq approximation. These are solved on a curvilinear/structured grid with an implicit finite-difference scheme (as default), as shown by [32] and described in the manual [33].

Sediment transport is based on the Engelund–Hansen equation [34], which considers the total transport load as bedload transport only and is a good approximation for transport of noncohesive sediments as shown by prior studies [13,18,35]. Additionally, Reyns et al. [36] showed that the Engelund–Hansen transport formula works well in combination with the so-called MorFac approach [11], which will be discussed later. The bed elevation is dynamically updated at each hydrodynamic time step.

For bedload transport, bed slope effects can be considered by the factors  $\alpha_{bs}$  (in local flow direction) and  $\alpha_{bn}$  (normal to the local flow direction) as proposed by Bagnold [37] and Ikeda [38]. The bed slope factor in local flow direction  $\alpha_{bs}$  is kept constant with the default value of 1 due to its limited influence [39] and will be not discussed further. However, the additional normal transport vector as presented by van Rijn [40] is a sensitive tuning parameter, which has a considerable influence on the developing morphology [41]. It is defined as:

$$\vec{S}_{b,n} = |S'_b| \alpha_{bn} \frac{u_{b,cr}}{|\vec{u}_b|} \frac{\partial z_b}{\partial n} \quad (1)$$

with  $\vec{S}_{b,n}$  being the additional transport vector calculated by  $S'_b$ , the initial transport vector,  $\alpha_{bn}$ , the user-defined coefficient for calibration,  $u_{b,cr}$ , the critical near-bed flow velocity,  $\vec{u}_b$ , the near-bed flow velocity and  $\frac{\partial z_b}{\partial n}$ , the bed slope normal to the flow direction.

The additional transport vector resulting from the calibrated  $\alpha_{bn}$  value can compensate for artificially created steep slopes, too deep and narrow channels, which are caused by missing processes in the model formulations (e.g., avalanching mechanisms), simplified transport equations and potential numerical effects [42]. In particular, when simulating long-term morphodynamic development of channel and shoals in combination with morphological acceleration factors, as discussed later, the determination of the additional transport vector gains importance [18,43]. A detailed analysis of the function and effects of the slope factors is presented by Baar et al. [41]. By increasing  $\alpha_{bn}$ , the bedload transport normal to the local flow direction is increased, leading to a generally smoother channel pattern. Following this tendency, high  $\alpha_{bn}$  values might restrict realistic development of channels due to refilling from the channel banks. Therefore,  $\alpha_{bn}$  should be chosen and treated carefully.

Additionally, as  $\alpha_{bn}$  only influences the bedload transport, it has a different order of magnitude for the Engelund–Hansen transport formula, with 100% of the transport considered as bedload, in comparison to the van Rijn transport formula, where only about 10% of the transport is bedload [43]. For the Engelund–Hansen transport formula, applied in this study, a calibrated  $\alpha_{bn}$  value of 7.5 is used in all simulations.

For the purpose of acceleration in the morphological development a morphological factor (MorFac) is used [11,12]. The MorFac accelerates morphological changes by multiplying the erosion and deposition fluxes per computational time-step with a constant or time varying value [33]. To speed up morphological simulations, various techniques can be used, based on the difference in time scales between the hydrodynamics and the morphodynamic response [44]. Simplifications can be made by schematizing the tide [44] or by using ensemble techniques to model the tides [45]. These studies indicate that reducing the tidal signal to a single tidal constituent is not sufficient. We therefore apply multiple tidal constituents in this study. Here, we follow the approach of the morphological factor as proposed by Roelvink [11] and later on used in other studies as well, e.g., [16,18,19,35,42]. In this approach, the bed level update per time step is multiplied by a factor, the so-called

morphological factor. The approach is based on the assumption that the timing of the morphological change on intratidal scale is of minor importance. This implies that computing  $n$  times ebb flow and then  $n$  times flood flow results in the same morphology as computing  $n$  full tides (see Ranasinghe et al. [12] for a more detailed explanation).

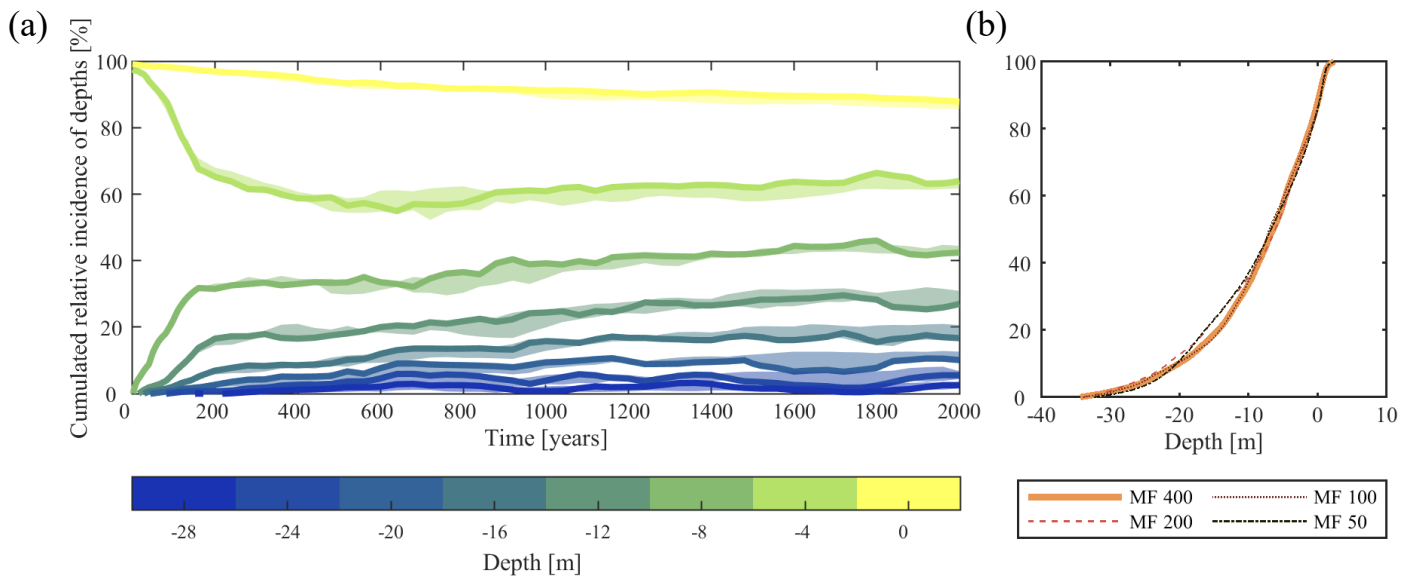
Studies have shown that, depending on the application, a MorFac of up to 1000 can be used to simulate long-term morphodynamic development [36]. The attempt for a critical MorFac definition [12,36] resulted in a formula, inspired by the Courant condition, that relates the propagation speed of bed forms to the available cell size. For applications similar to the present one, MorFacs of up to 300 and 400 are documented [16,18,19].

Calculating a critical MorFac according to [36] leads to a critical MorFac in the order of 800, which is a high value in general. In this study, a MorFac of 400 is applied. Increasing/decreasing the MorFac corresponds with increasing/decreasing the time step for morphological modeling. Therefore, this numerical parameter needs to be selected based on requirements: A valid MorFac has to be small enough to satisfy two requirements related to respectively stability and accuracy of the simulations.

Regarding stability, MorFac values much larger than the chosen one may result into model instabilities meaning a violation of the stability criterion. The consequence of violating the stability requirement is that simulations cannot be carried out until the end. This can be an issue, especially with particular artificial initial conditions. An additional morphological stability criterion, the development of a morphological equilibrium, can be introduced. In this study, the morphological equilibrium is essential, in accordance with the investigation approach.

Regarding the accuracy criterion, it needs to be ensured that a further decrease of the MorFac will not affect model results. This prevents using a MorFac that overestimates sediment transport, leading to deeper channels, more exposed flats and less intertidal area.

The given MorFac value is applicable if the simulation is stable, a morphodynamic equilibrium develops and the resulting channel and shoal distribution does not vary significantly when applying smaller MorFacs. These aspects are analyzed by calculating the development of hypsometric curves of the model domain over time for the different MorFacs applied (50, 100, 200 and 400). Figure 2a presents the range of the resulting development of the hypsometric curves integrated over the model domain and plotted over time. Here, the same depth contour lines (indicated by the colors in Figure 2a) are calculated in their cumulative percentage of appearance in the model domain ( $y$ -axis) for each of the MorFacs over time ( $x$ -axis). The span of the same contour lines between the different MorFacs is filled with the respective color (rather than the span of the depth range as typically seen). Additionally, the individual contour lines of the specific depths for the MorFac 400 are highlighted. The hypsometry starts with an unrealistic, artificial pattern, based on the uniform initial depth. During the MorFac simulations, each develops a channel and shoal pattern, changing the hypsometry in a similar way (small colored spans). At the end, a realistic distribution of the total area to different depth ranges is established, representing a realistic hypsometry. Figure 2b shows the individual hypsometric curves for the evaluated MorFacs after 2000 years of development as the cumulative percentage appearance ( $y$ -axis) of the developed depths ( $x$ -axis). The variations in the hypsometric development in Figure 2a are generally small with a local maximum of around 10%. Differences in the hypsometric curve at the end of the evaluation in Figure 2b are minimal. Hence, a decrease of the MorFac does not give different model results. Additionally, Figure 2a,b show a realistic hypsometry developed for all tested MorFacs. Thus, the accuracy requirements are fulfilled for the MorFac 400.



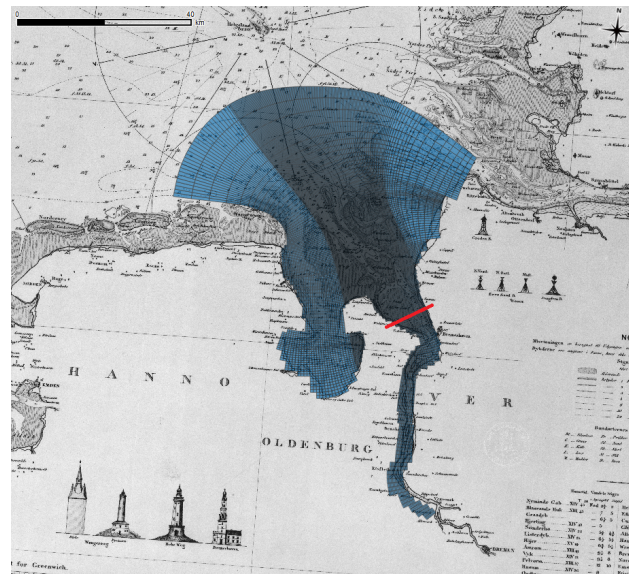
**Figure 2.** Validation of the morphological factor by (a) the development of cumulative relative incident (in [%]) of depth contour lines as the colored span of contour lines from the MorFacs 400, 200, 100, 50 (MorFac 400 in thick) and (b) the individual hypsometric curves after 2000 years.

### 2.3. Model Set-Up

A curvilinear rectangular grid is generated covering the Jade-Weser estuary from Bremen-Vegesack to a few kilometers into the North Sea (see Figure 3). Model boundaries are aligned to the historical land boundaries, which resemble the overall shape of the present ones. The grid cell resolution varies from around  $10^3$  m in the most outer North Sea part and around  $10^2$  m in the inner part of the model domain. The latter resolution is present in the area of interest. Both resolutions are based on the length scales of the channel and shoal features that can be found in the Weser estuary historically and at present.

The initial depth has a value of 7.34 m and is determined by the mean water depth of the Jade-Weser-area from a historical chart of the year 1878.

The model is steered by two open boundaries: The tidal constituents O1, K1, M2, S2, M4, MS4 and M6 on the northern model domain side and a constant river discharge on the southern end. The amplitudes and phases of the tidal constituents along the open boundary are extracted from a larger model (Jade-Weser-Elbe-Model) maintained by the Federal Waterway Engineering and Research Institute [46]. It is assumed that this tidal signal is representative for the historical tidal regime, based on the findings of schematized model studies [18,31]. The river discharge is  $325 \frac{m^3}{s}$  in alignment with the yearly averaged fresh water discharge historically [30] and at present [3].



**Figure 3.** Model domain and grid—created on the basis of historical maps—with a background map from 1862. The cross-section 75, which is essential for the results and discussed later, is marked in red.

One noncohesive sediment fraction was used, as it was used in similar studies [18,19]. A 200  $\mu\text{m}$  sand is in good agreement with the dominating sediment fraction in the Outer Weser area based on the data available in Geopotenzial Deutsche Nordsee [47]. The available sediment thickness varies between 25 and 35 m and is limited by a non-erodible Holocene layer [47].

#### 2.4. Scenario Composition

A classification of estuaries from Boyd et al. [48] considers three main influences that shape an estuary: tides, waves and river discharge. For the German Bight, Kösters and Winter [23] looked at different combinations of tides, wind stress and waves to investigate resulting bottom shear stresses and morphodynamic changes. Furthermore, Herrling et al. [20] analyzed the effect of tides, wind-induced waves and currents as well as swells for the Outer Weser estuary. Their results suggest that the influence of wind stress and waves on the main channel morphodynamics can be neglected considering the schematization of this study. However, Herrling et al. [20] found that locally generated wind waves are influencing the morphodynamics of the inter- and supratidal area, which should be kept in mind, when looking at the results of this study. Nevertheless, these are not considered due to the anticipated spatial scale of this study and the simplified investigation approach. Therefore, five scenarios are defined (see Table 1).

**Table 1.** Scenario Composition Synthesis: Listing of the scenarios selected for investigation on the left, based on the different aspects of the tides and river discharge that are potentially responsible for the formation of a two-channel system. The affiliation of the scenarios to either tides or discharge is indicated by the dots within the columns in the middle, followed by a description of the effects the scenario en- or disables, respectively.

Scenario	Tides	Discharge	Description
No Kelvin Wave	•		No phase shift in the tidal constituents at the open boundary.
No Coriolis	•		No Coriolis effect included by setting the model latitude to zero.
Increased Tides	•		110% amplitude for tidal constituents (seasonal/long-term effects).
No Discharge		•	A constant discharge of 0 $\frac{\text{m}^3}{\text{s}}$ at the southern open boundary.
Max. Discharge		•	A constantly high discharge of 2000 $\frac{\text{m}^3}{\text{s}}$ is defined.



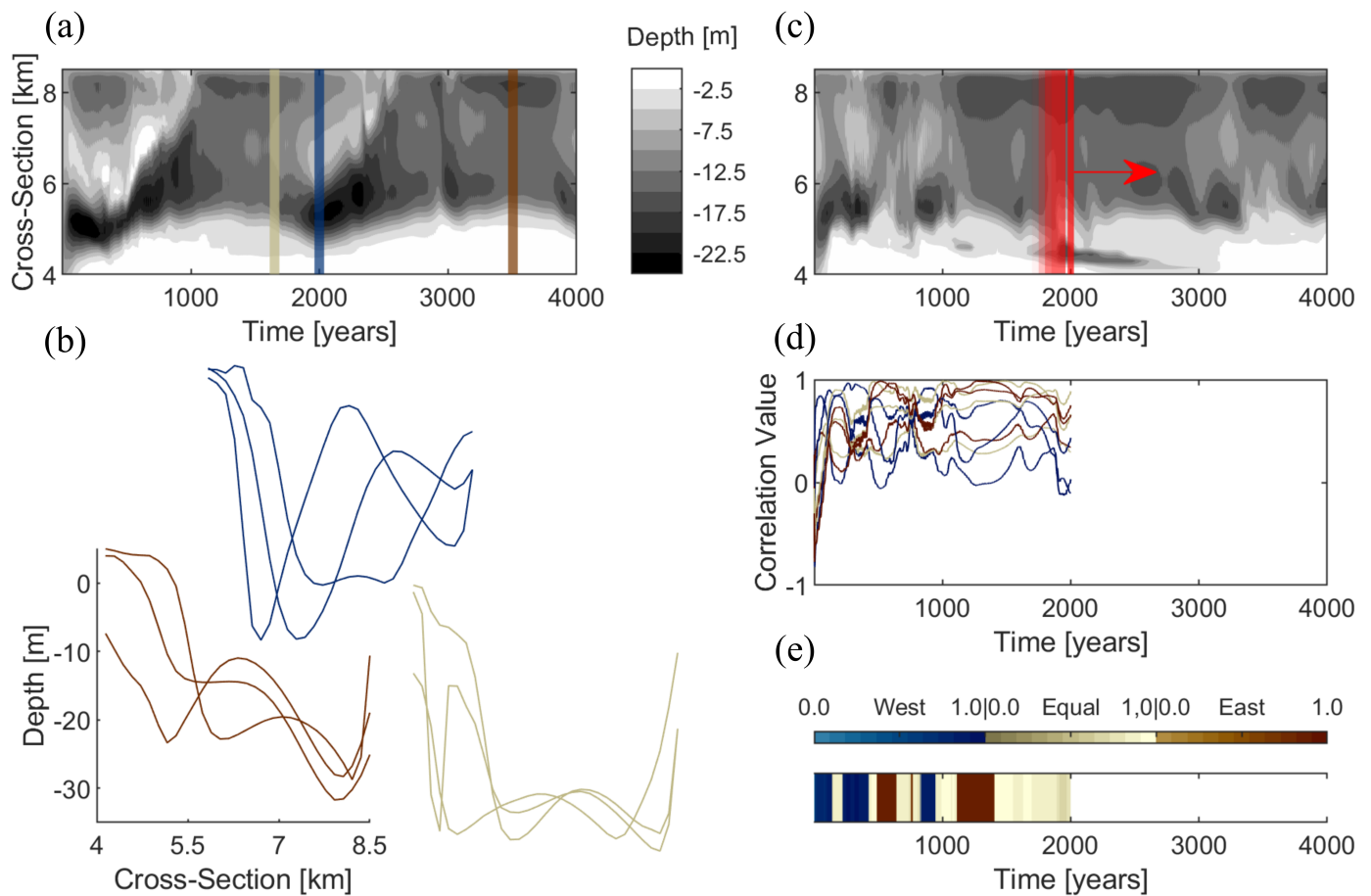
The funnel shape of the Weser estuary and previous studies [3,20,23] suggest that tides play the most important role in the morphodynamic development of the shoals and channels. Hence, special attention is paid to the tides. Two parts of the tides potentially influence the development of two-channel systems. The first part is the strength of the tides as such or relative to the river discharge. Variations in the tidal amplitude, based on seasonal or long-term effects, could lead to multiple conditions that are present for a limited time and individually support a western or an eastern channel in the Outer Weser Estuary, respectively. If each condition stabilizes a channel one site, the two-channel system could be based on two alternating tidal conditions (tidal range). Thus, by comparing a scenario simulation with a 10% increased tidal amplitude to the simulation with 0% increase (base case), it can be revealed if this hypothesis is true for the Outer Weser Estuary. Second, the spatial appearance based on deflections of the tides inside the estuary can lead to more pronounced channels on different sides of the estuary. Two main deflections are considered here: the Kelvin wave and the Coriolis effect. The latter deflects flows to the right, as the Weser Estuary is located at 53° north. The Kelvin wave is a result of this Coriolis-based deflection in the North Sea basin where a circular tidal wave propagation forms [49]. It causes a phase shift of the tidal wave in the German Bight, and thus at the offshore boundary of the Outer Weser. Both deflections might influence the location of a more dominant channel by pushing the ebb flow, flood flow or river discharge toward one side of the estuarine land boundaries. Consequently, a simulation without the Coriolis effect and one without the phase shift at the open boundary should reveal their effects on the two-channel system, respectively, when comparing their results to the base case simulation results, where both influences are included.

Additionally, two extreme river discharge cases are added to the scenario list.

The listed effects will be investigated in a three-step routine. First, the model setup is adapted such that the effect is included or not included. Second, a simulation is run. Third, the results of the scenario simulation are compared to the base case simulation, revealing the influence of the selected scenario on the channel and shoal development.

### 2.5. Postprocessing Methods

The development of the two-channel system and the corresponding morphological state is investigated by analyzing the temporal development of a cross-section regarding the dominance of western, eastern or middle channels. A novel method is to quantify the dominance of certain channel–shoal patterns in cross-sections (correlation analysis of (cross-)section evolution—CASE method). A small number ( $n$ ) of cross-section types is determined from the baseline simulation (Figure 4a, with three exemplary cases) representing distinctive channel–shoal patterns with a certain feature, or a certain type of channel–shoal pattern. Each distinctive cross-section type defines a case, resulting in  $n$  cases that can optionally be organized in groups of equal channel–shoal pattern types (Figure 4b, with (blue = western dominance, yellow = equal dominance and red = eastern dominance)). All available cross-sections from different scenarios and/or different points in time are then correlated to these cases (schematized in Figure 4c), leading to  $n$  correlation coefficients between  $-1$  and  $1$  for each point in time (Figure 4d). Based on the cross-section type with the maximum correlation, the dominant channel–shoal pattern is determined (Figure 4e). The degree of resemblance is further indicated by the correlation value (e.g., visualized by color intensity). This method is applied here to an exemplary cross-section, which lies within the center of the area in which the two channels occur (see Figure 3). From the base case scenario simulation, nine cross-section types are chosen (see Figure 4). Each of the nine cross-section corresponds to a morphological state of western channel dominance, equal channel dominance or eastern channel dominance (3 types each category). The base case is used for the definition of the cases due to its comparability with the scenario simulations. With this method, a time series of cross-sections is translated to a time series of dominance types for each scenario.



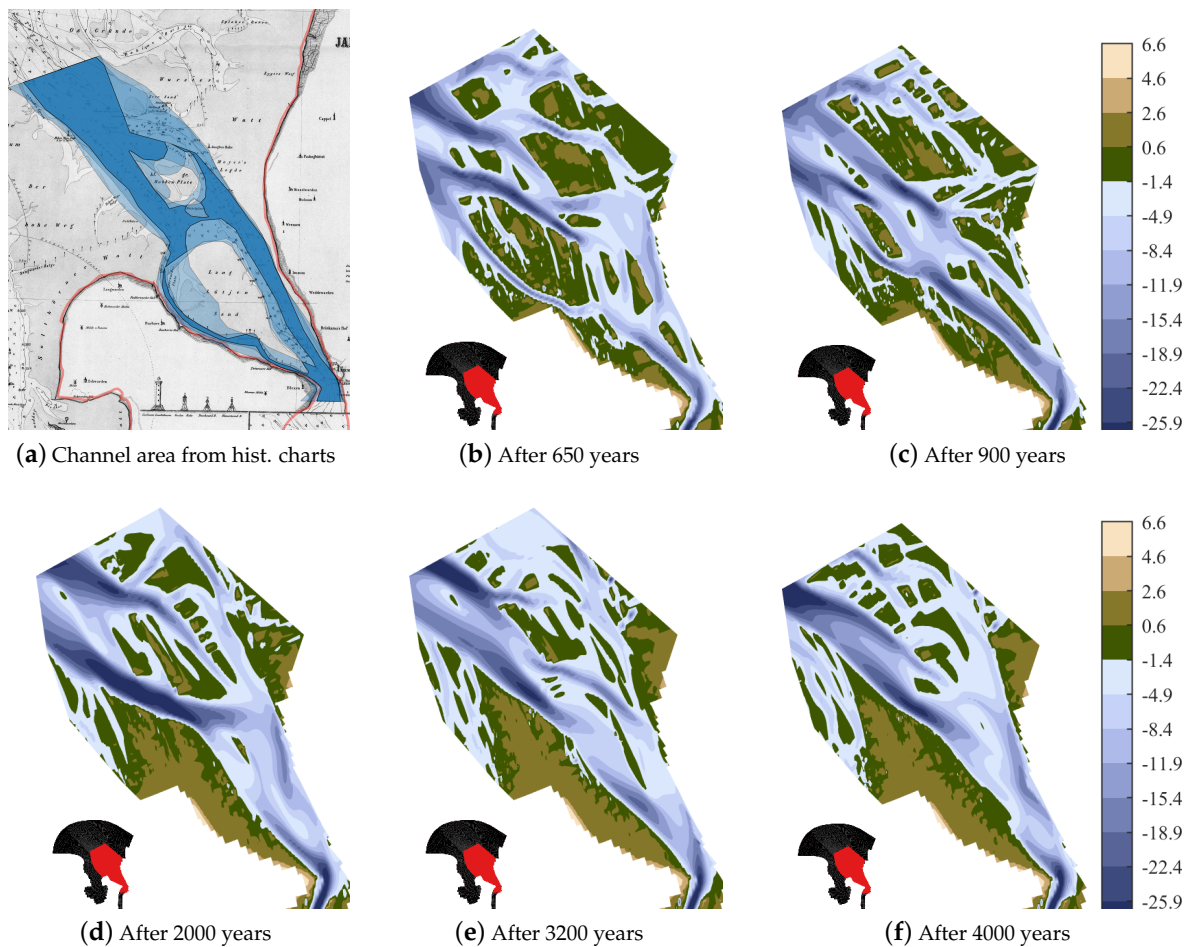
**Figure 4.** Graphical description of the CASE method with (a) the selection of representative cases, (b) the final nine cases for this study, (c) the correlation analysis over time, (d) the resulting correlation values and (e) the final result, where the morphological state is presented over time with the corresponding case (color) and its correlation value (color intensity).

To visually compare the temporal development of the two-channel system in the different scenarios, Hovmöller diagrams [50] are used which display the cross-section depths over time. Above each of those diagrams, a bar plot indicating the dominant two-channel type and the strength of the correlation calculated with the CASE method is displayed. The channel dominance categories are visualized by different colors (green for western, red for eastern and light yellow for equal dominance). Additionally, by showing the corresponding cross-correlation values through color intensity, plausibility of the respective category is indicated. With this approach of combining Hovmöller plots with results of the CASE method, a visual inspection of the temporal development of each scenario is combined with a quantitative classification of the corresponding morphological states.

### 3. Results

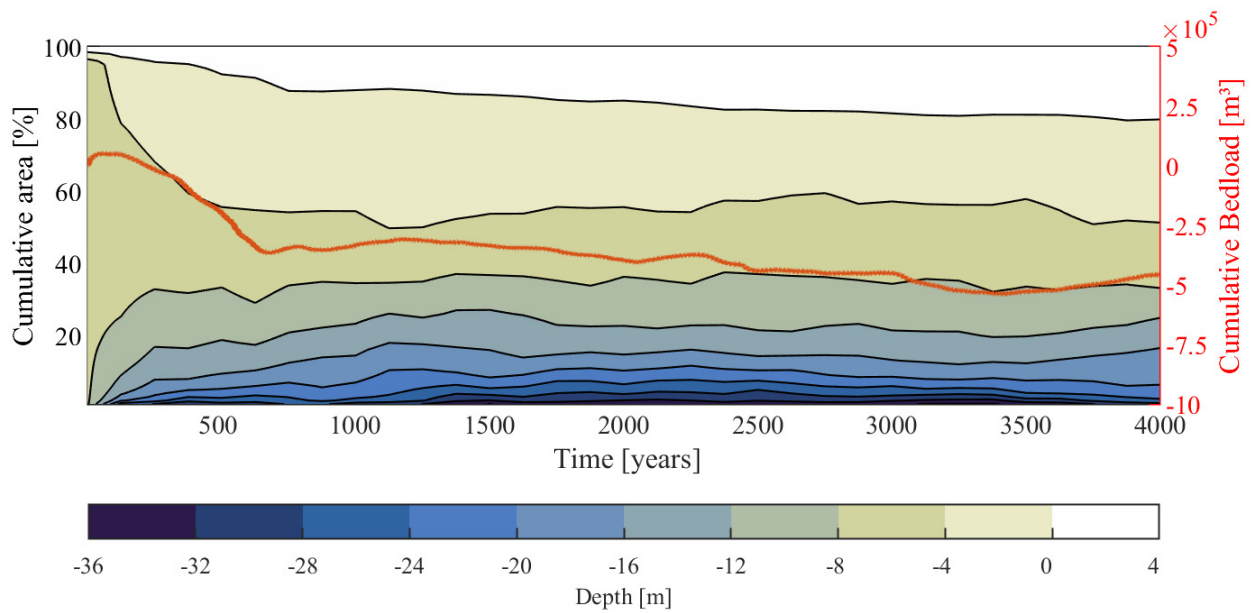
#### 3.1. Base Case

The results of the base case simulation show a good representation in the Outer Weser estuary. A two-channel system clearly develops (see Figure 5) and remains morphodynamically active. The locations and depths of the channel are reasonable compared to naval charts. For the base case simulation, the criteria for morphodynamic equilibrium are reached after 650 years (the product of the hydrodynamic time and the MorFac) according to Figure 6. The results in Figure 6 are based on the hypsometric development of the area of interest (visualized in Figure 5b–f) and the cumulative bedload transport of the representative cross-section (indicated in Figure 3). Thus, for the base case, the first two research questions stated in the introduction can be confirmed.

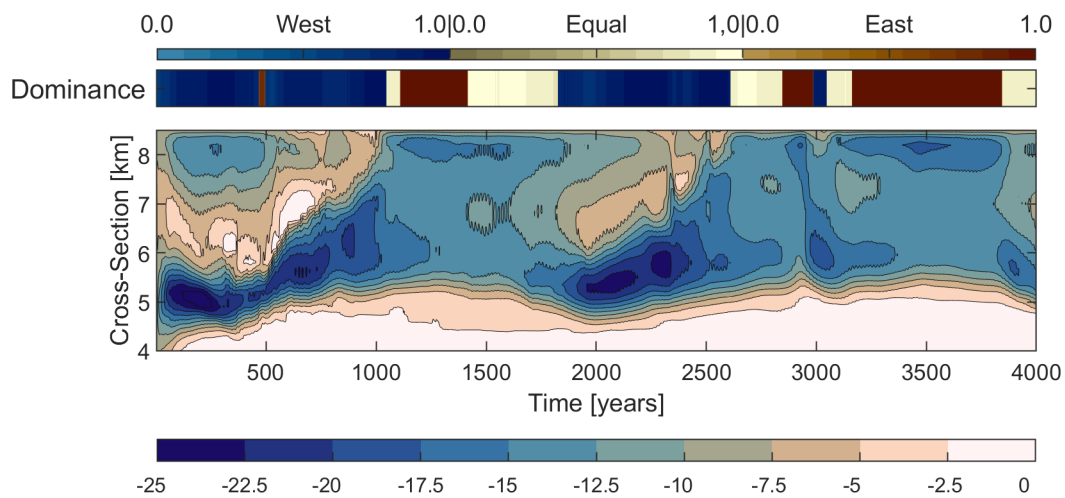


**Figure 5.** Simulation results of the base case. In (a), the locations of the tidal channel system from three historical charts (1812, 1859, 1870) are intersected. In (b–f), results of the morphological simulations are shown for different years, with channel depths in blue and shoals in earth colors.

The equilibrium point is shown in Figure 5b, where a number of side channels exist in addition to the two main channels. Afterward, the established two-channel system remains morphodynamically active and switches between two clearly separated channels (Figure 5c,e) and two almost unified channels (Figure 5d,f). Furthermore, an alternation of the location of the deepest channel can be found in the results, which connects to the third research question. Figure 7 visualizes the alternation applying the CASE method. Looking at the reversed Hovmöller diagram, the western channel is more prominent. Additionally, a channel and shoal scheme is present repetitively. First, a deep and wide channel develops on the western side (beginning–1200 years, 1850–2600 years and 3000–3100 years), followed by the development of an eastern channel (1250–1700 years, 2800–2950 years and 3200–3800 years), which becomes more dominant as the western channel becomes shallower at the same time. With respect to the third research question, there is a more dominant channel and even an alternation of the latter is found. This is approved by the correlation analysis (top of Figure 7), where the recurrent pattern of the prevailing western dominance (green) and eastern dominance (red) is illustrated. Additionally, there are periods where neither of the channels is more dominant (yellow). Overall, correlation values are high ( $>0.75$ ) after initiation.



**Figure 6.** Development of the hypsometry over time in the area of interest (left y-axis) combined with the cumulative bedload transport over time (right y-axis). Both trajectories tend to become linear over time which is considered to prove morphodynamic equilibrium.



**Figure 7.** Depth of the investigated cross-section over time, showing the alternation of the two-channel system. The channel dominance calculated by the CASE method is displayed above, greenish colors indicating western dominance, reddish colors indicating eastern dominance and brownish indicating a balanced two-channel system, the shading within each color indicating the strength of the correlation.

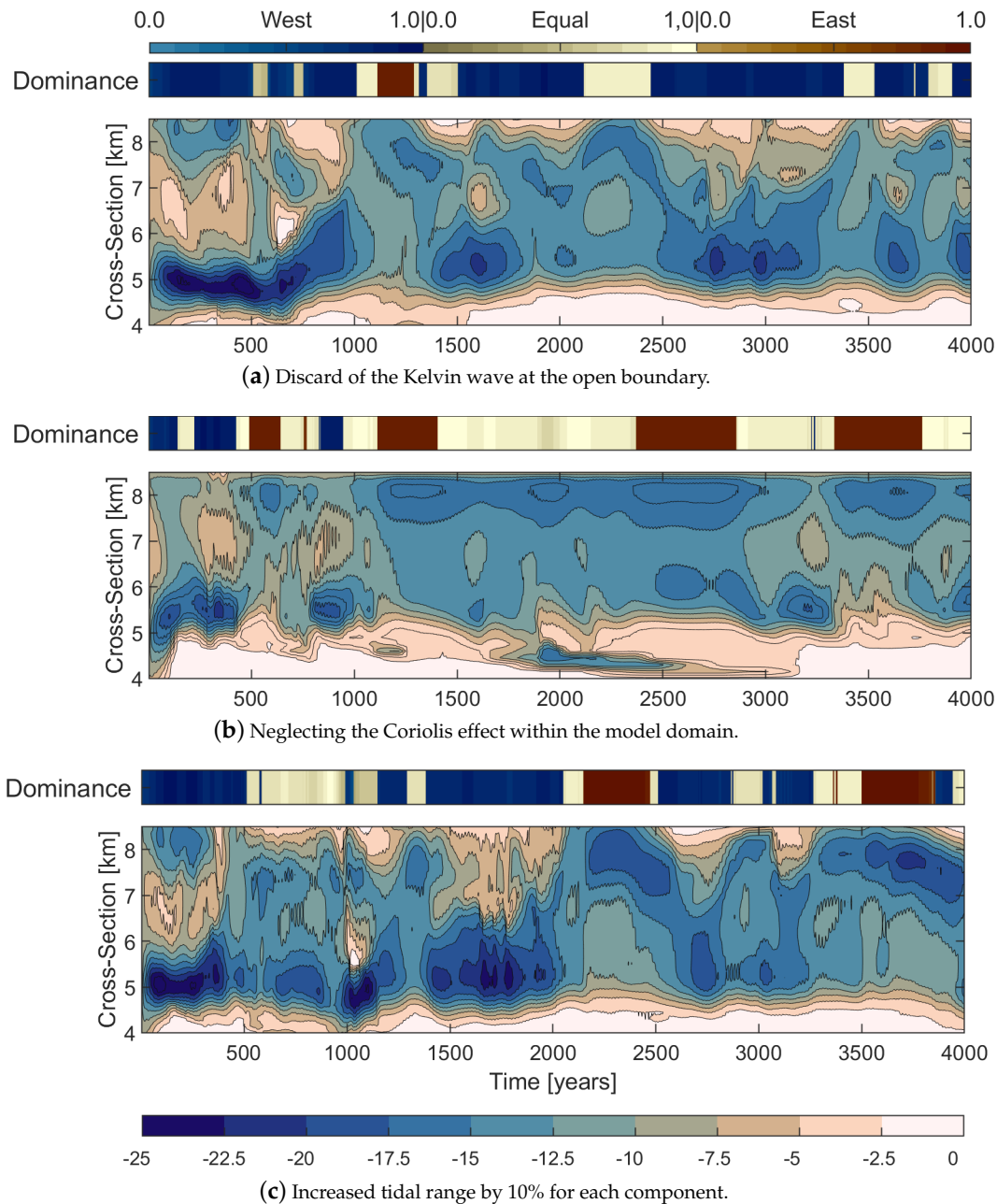
As all research questions are answered positively, the influences of the predefined forcings (Section 2.4) are investigated.

### 3.2. Effects of Varying Tide

The effects of the tidal scenarios are presented according to the research questions and results are summarized by applying the CASE method (Figure 8). For the bathymetric development of the scenarios, see the Appendix A.

First, all three scenarios reach a morphological equilibrium and show a clear two-channel system developing (Figure 8). Comparing the two-channel systems developing in the tidal scenarios with the base case reveals similarities with respect to the general two-channel system and the formation and variation of deeper channels. However, comparing

the location and dynamic alternation of the deepest channel to the base case results shows considerable variations. In a nutshell, the first two research questions are answered positively and by elaborating on the third question differences can be identified more clearly.



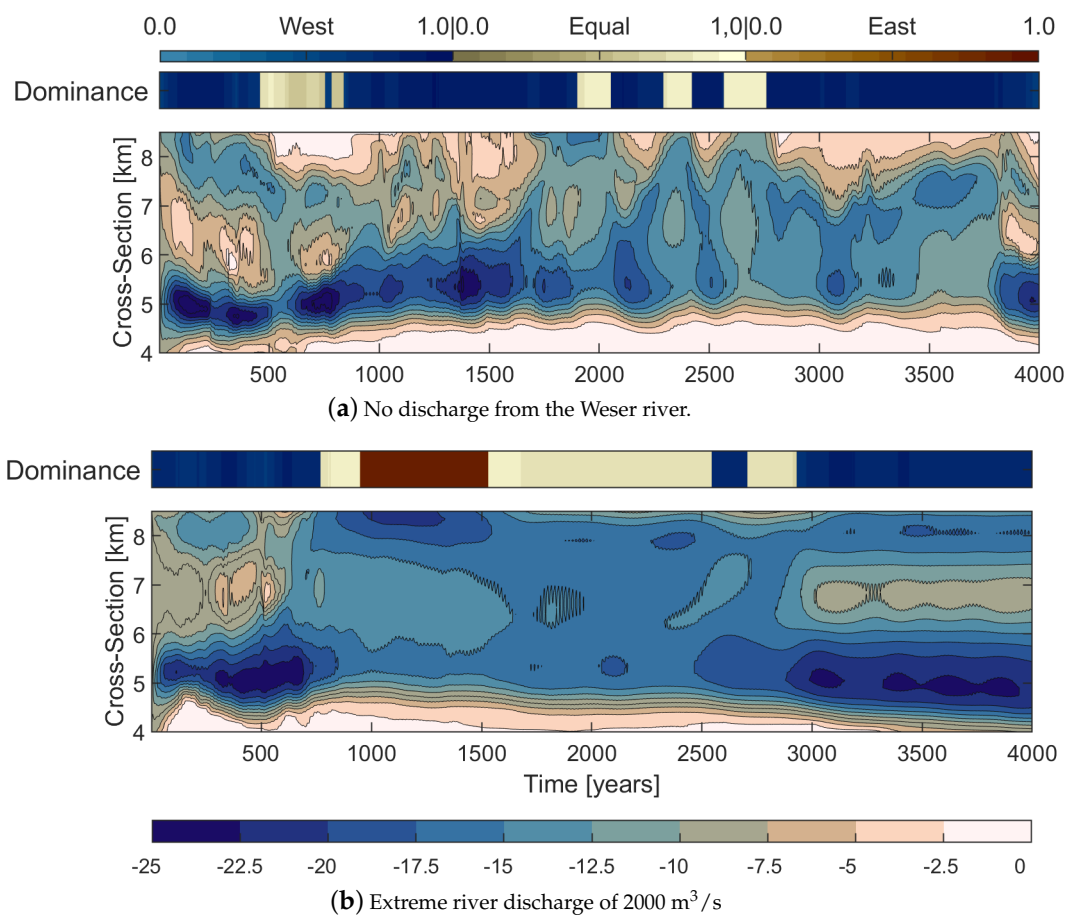
**Figure 8.** Two-channel system alternation for the tidal scenario simulations (description, see Figure 7).

Starting with the location of the deepest channel, the no Kelvin wave scenario shows a more distinct western channel (Figure 8a). The opposite holds true for the no Coriolis scenario (Figure 8b). Additionally, a mixed development is seen in the increased tidal range scenario (Figure 8c): Although the deeper channel can be found on the western side most of the time, the channel and domination pattern is more mixed compared to the other scenarios. Next, the dynamics of the domination pattern are found: In the no Kelvin wave scenario, an almost regular alternation is established, mainly between western and equal dominance (Figure 8a). An alternation period of 500–1000 years is shown. The absence of the Coriolis effect leads to a more stable eastern channel and less frequent alternations

between eastern and equal dominance (Figure 8b). Lastly, an increased tidal forcing creates a more frequent and expansive alternation (Figure 8c). Especially between 1500–2650 years and after, a complete shift of the dominance from west to east develops.

### 3.3. Effects of Varying Discharge

Similar to the tidal scenarios, the river discharge scenarios both reach a morphological equilibrium and show a two-channel system (Figure 9). However, with respect to the base case, the results of the two simulation reveal significant differences. For the scenario without any discharge (Figure 9a), periodically, a two-channel system develops and disappears when only one channel is present only. This is the western channel for the majority of the simulation period. The scenario with extreme discharge (Figure 9b) reveals a two-channel system that almost unifies into one large channel for a limited period but then divides into two clear channels.

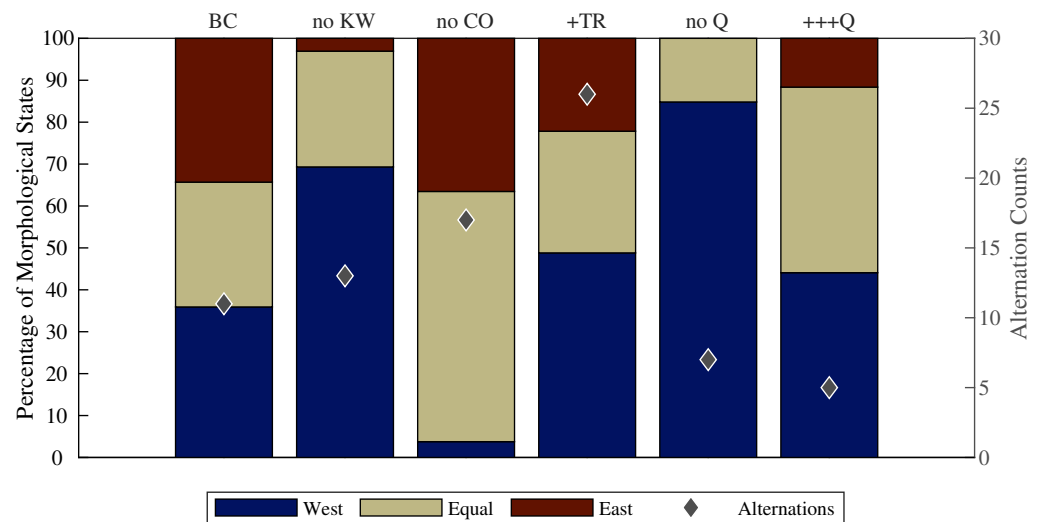


**Figure 9.** Alternation of the two-channel system for the river discharge scenario simulations (description, see Figure 7).

Accordingly, the alternation is relatively slow for both cases, especially for the extreme discharge scenario. Here, the CASE method indicates that there is one full alternation of channel dominance only in 4000 years. The cross-sectional plot supports this finding as described previously. In the no discharge scenario, some alternating features can be found even though the dominance does not fully alternate. Additionally, due to general orientation of the channels toward the west in combination with the established channel on the western side, a clear alternation is seen from 1750 to 3000 years. This observation is supported by the recurrent pattern in the cross-correlation revealed by the CASE method.

### 3.4. Synthesis

Figure 10 shows the CASE method results for all scenarios, indicating the influence of the forcing on the two-channel system. Two aspects are included in Figure 10 for each simulation: first, the individual distribution of channel dominance in the two-channel system, and second, the resulting alternation activity (counts of changes between morphological states). The alternation activity is not necessarily referred to full alternations from western to eastern dominance and back. By comparing both aspects for the scenarios with the base case, conclusions can be drawn about the increase or decrease of either channel or alternation presence.



**Figure 10.** Comparison of the occurrence of channel dominance distribution (%) per scenario. With BC = base case, no KW = no Kelvin wave, no CO = no Coriolis effect, +TR = increased tidal range, no Q = no river discharge and +++Q = extreme river discharge. The number of alternations (changes between morphological states) is shown by the blue diamonds.

An enhanced eastern channel can be found when the influence of the Kelvin wave and the mean river discharge are included (as no Kelvin wave or no discharge show less or no percentage of eastern channel dominance). Thus, both influences have the potential to significantly increase the presence of eastern channel dominance. The opposite holds true for the effects of Coriolis (when Coriolis is actually included like it is in the base case), an increased tidal range and extreme river discharge, as indicated by the higher percentage of the green bars in Figure 10. Hence, the western channel is supported by these three effects.

The enhancement of one of the two channels correlates with a decreased alternation activity. The base case, where Coriolis and the Kelvin wave are included, has a lower alternation count compared to the simulations, where these effects are disabled. Extreme river discharge leads to even less changes in the morphological state as for the base case. Higher alternation activity is found with an increased tidal range and with mean river discharge (no river discharge compared to the mean discharge of the base case). However, the increase in alternation activity of the increased tidal range is considerably higher, compared to the mean river discharge. These findings will be discussed below.

#### 4. Discussion

The base case simulation shows the development of a two-channel system and its morphodynamic activity over a period of 4000 years. Within a period of 650 years, a morphodynamic equilibrium is established and remains at its state from that point onward. Both aspects, the development of a two-channel system and reaching morphodynamic equilibrium, imply a successful application of the modeling approach described in Section 2.1. A comparison with nautical charts (from the time before human interventions changed the morphology of the Weser estuary) reveals that the extent and the migration area of the individual channels is plausible. However, the exact location and dimensions of the individual channels differ to some degree from the observed ones, which is presumably caused by the simplicity of the modeling approach. A key disparity is that the channels generally tend to become too deep in comparison with documented bathymetries, which is a known issue for Delft3D models as discussed by [42]. Nevertheless, the reasonable results of the base case allow the execution of the designed scenarios.

Here, the variety of developed two-channel systems offers valuable insight into the impact of several parameters on morphodynamic development. The synthesis of all scenario results in the conclusion that the development of the two-channel system is mainly caused by the relation of tides and river discharge in combination with the basin geometry. This is in alignment with the hypothesis given in Section 2.4. The relation of tides and discharge can be interpreted as the tides being the main driver and decisive for the formation of the channels. A strong indicator for this reasoning is the result of the no river discharge scenario, where a two-channel system is found based on the tidal forcing only. Due to the absence of river discharge, the western channel establishes stronger than the eastern channel as indicated by the CASE method in Figure 9a.

Thus, in order to get a two-channel system with equally deep channels, it takes a combination of tides and river discharge. The results of the increased tidal range scenario and extreme discharge verify this finding (Figure 10 and Figure A2). The results of the various scenarios reveal a trend: the more tides are dominating over discharge (+ tidal range, Figure 10), the more a western channel develops, while more discharge favors the development of an eastern channel. However, this only applies as long as Coriolis is included, causing a reflection of the incoming tidal wave to the right. This holds true for the extreme discharge scenario as well; however, it can neither be seen in Figure 10 nor in the CASE method results. The reason is that the extreme discharge scenario creates a stable two-channel system, where the eastern channel becomes dominant further offshore of the selected cross-section (see Figure A2e,f), and is thus not covered by the CASE method.

The dependence of the well-established western channel on the Coriolis effect implies that the flood flow is deflected to the western side and the ebb flow to the eastern side, causing the two-channel system with a flood channel in the west and an ebb channel in the east. The results of the scenario simulation neglecting the Coriolis effect, where the eastern channel is more pronounced, would support this reasoning. Additionally, the comparison between the no discharge scenario and the base case simulation (with average discharge) agrees with the latter observations, as the consequently larger magnitude of offshore directed flow (deflected to the eastern side by the Coriolis effect) results in a stronger eastern channel. Following this reasoning, the no discharge scenario shows that ebb flow alone is strong enough to create the eastern channel. However, the depth averaged velocities calculated in the two channels do not support the argumentation of a flood and ebb channel, as their magnitudes are almost identical ( $<< +/ - 10\%$ ). This is in alignment with the present two-channel system, which cannot be divided into a flood and an ebb channel, too.

Furthermore, the investigated aspects of the tides alone are found not to be the main driver for the development of a two-channel system as all scenario simulations develop a two-channel system (Figure 8). Figure 10 shows that the Kelvin wave supports the generation of a more eastern-dominated pattern, whereas the Coriolis effect results in an



enhanced western channel. This behavior is reasonable as the incoming tides approach the east side of the Outer Weser due to the northwestern-originated Kelvin-wave-based inertia.

Although validation of the scenario simulations remains challenging due to their conceptualized character, the justification criteria applied for the base case holds true for the scenario simulations as well. All simulations reach a morphodynamic equilibrium and the developed morphology is reasonable, although channels tend to be too deep. The influence of the basin geometry is not part of this research but raises interesting research questions.

Another remarkable finding is a variety of alternation patterns (Figures 7–9) and periods (Figure 10). These depend on the domination of the tides (with respect to river discharge) and the depth of the channels. The first aspect is shown by the trend in Figure 10, where an increased tidal range increases alternation, followed by mean river discharge, which increases alternation based on the domination of tides and the more equally established two-channel system. If the tidal flow is overruled by extreme river discharge, alternation is reduced. Additionally, if one channel is more pronounced, it takes more time to alter as seen for the Kelvin wave and Coriolis effect. As fascinating as the alternation results are, a justified quantification remains challenging, almost impossible for two reasons. First, as mentioned earlier, the channel depth is overestimated in all simulations. As this is relevant for the alternation period, the resulting alternation periods are probably overestimated as well. Second, the alternation dynamics shown in Figure 10 are based on the CASE method with one cross-section analyzed, leading to a local observation. Additionally, by selecting the representative cases from the base case simulation for the CASE method, the channel and shoal patterns are simplified and therefore less accurate, despite high cross-correlation values.

In reports, alternation periods have been described varying between 20 and 120 years [4,28,30]. Compared to the time span of an alternation in Figures 7–9, these are rather short periods, whereas the simulated alternation periods are up to ten times longer. Thus, a comprehensive analysis of the causes and reasons for the alternation does not seem to be feasible with the modeling approach chosen.

To put our results into perspective, we compared them with results from similar studies of other systems. Two studies on the Western Scheldt Estuary, Netherlands [18,19] and one on the Qiangtangjiang Estuary, China [51] are considered. The comparison shows similarities, but it also reveals the importance of accounting for the specific signatures of each study site. Similarities are found in the development of a morphological equilibrium and the dependence of the locations of channel and shoals on the estuarine geometry. The studies at both systems indicate a strong influence of the basin geometry on the results of the large scale tidal channel and/or bar developments. Furthermore, Dam et al. [19] and Yu et al. [51] found that a morphological equilibrium is reached in both estuaries. Moreover, the estimated time span for reaching a morphological equilibrium has a comparable order of magnitude as the time spans determined in this study.

Partly similar results are found for the influence of river discharge on the model result. For the Qiangtangjiang Estuary [51], it was found that a channel and shoal pattern develops, even if no discharge is imposed. This is in agreement with the results shown in Section 3.3. Nevertheless, a dependence of the offshore shoal extent on the river discharge as indicated by Yu et al. [51] cannot be identified in this study. However, the average discharge in the Qiangtangjiang Estuary is an order of magnitude larger compared to the Weser Estuary and the investigation of Yu et al. [51] is more schematized (an idealized funnel shape). In the Western Scheldt Estuary [18], river discharge affects the development of the channel and shoal system in a way similar to that in our study. However, van der Wegen and Roelvink [18] found that an extreme river discharge enhances the ebb channel, unlike in this study, where there is still a two-channel system at almost the same location as for normal or no river discharge. The explanation for this difference could be the more restricted geometry of the Western Scheldt. Additionally, the deviation in ebb and flood channels is not applicable for the results in this study as discussed before.

The alternation of a more dominant channel within a two-channel system appears to be unique for the Weser Estuary and has not been detected or described in any of the previous studies. Furthermore, the influence of the Coriolis effect, the Kelvin wave and an increased tidal range has not been investigated by one of the three other studies [18,19,51].

The flat bed approach in combination with a high MorFac and simplified boundary conditions is a handy method to investigate large-scale morphodynamic features and developments with reasonable accuracy and computational effort. However, there remains some potential for optimization, which may be addressed in future research. A point that could not be improved during this research is the development of the tidal range inside the Lower Weser. While the tidal range in the area of interest meets the documented historical tidal range, the tidal range becomes too high when traveling inside the estuary compared to historical measurements. The cause for the amplified tidal range lies in the flat bed modeling approach, as there is not enough friction in the Lower Weser to damp the tidal wave during its propagation. As this is the case from the beginning, the narrow and shallow channels that are necessary to generate the needed friction cannot develop and the Lower Weser channel remains deep. An option to overcome this problem could be introducing a gradient to the initial bathymetry, but it is not possible with the same initial depth in the whole model domain. Another option mentioned in publications using the flat bed approach is the consideration of non-erodible layers [18]. As described earlier, these were applied in this study as well, but at the time, data were only available for the outer part of the model domain, and thus not available for possible model improvements in the Lower Weser.

Here, it needs to be mentioned that the analyses of the CASE method are based on one cross-section within the area of interest that has been selected as representative.

## 5. Conclusions

This research presents how the channel development on the Outer Weser estuary is influenced by tidal range, Coriolis effect, Kelvin wave and river discharge, based on a novel analysis of schematized long-term morphodynamic simulations. Starting with a flat bed, a morphodynamic equilibrium with a two-channel system is reached in all simulations. Differences in the developing channel and shoal patterns show that each forcing contributes more to one of the two channels than to the other. However, the two-channel system is developing as a result of the tides in combination with the basin geometry, as none of the investigated effects result in an only one-channel system, only. A classification into a flood and an ebb channel is not supported by the results. Alternation of the more dominant channel is found in the simulations, but assigning the responsible forcing remains challenging. However, it is likely that this is a result of the interaction between the tides and the basin geometry, as alternation periods are not linked to artificial time scales of the model.

Simulation results are analyzed using the correlation analysis of (cross-)section evolution (CASE) method developed in this study. It compares simulation results based on cross-section correlation and presents the morphological state over time for each simulation. The developed CASE method complements available methods for analyzing long-term channel and shoal development but should be seen as a local indicator. It might provide additional insight to further develop the CASE method to include more cross-sections. Additionally, the cases selected in the base case simulation for the correlation analysis are chosen manually and further criteria for their selection might improve the method.

**Author Contributions:** Conceptualization, J.G. and A.Z.; data acquisition, model setup, investigation and writing—original draft, J.G.; data acquisition, supervision and writing—editing and reviewing, A.Z., B.C.v.P. and Z.B.W. All authors have read and agreed to the published version of the manuscript.

**Funding:** The publication of this article was funded by the Open Access Fund of the Leibniz Universität Hannover.

**Acknowledgments:** This study was supported by the infrastructure of BAW. The authors want to thank for the support and comments provided by the colleagues at BAW. All figures are processed and prepared in Matlab and all color maps are taken from the scientific color maps of F. Crameri [52]. Furthermore, the authors thankfully gained ideas and supportive comments during the investigation from Sierd de Vries and feedback on the manuscript by Jan Tiede, Leon Scheiber, Christian Jordan and Zoë Vercelli.

**Conflicts of Interest:** The authors declare no conflict of interest.

**Abbreviations**

The following abbreviations are used in this manuscript:

BAW	Federal Waterways Engineering and Research Institute
DOAJ	Directory of open access journals
MDPI	Multidisciplinary Digital Publishing Institute
MORFAC	Morphological Factor
CASE	Correlation Analysis of (cross-)Section Evolution

**Appendix A. Scenario Results**

*Appendix A.1. Tidal Scenarios*

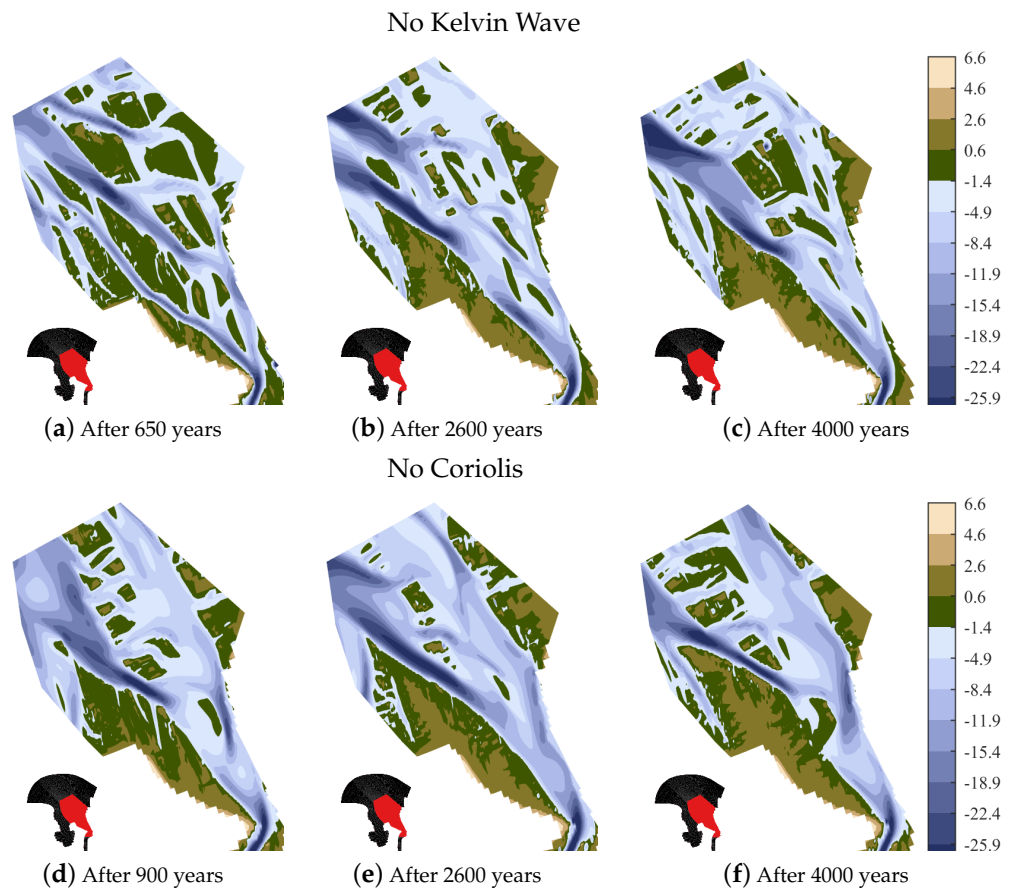
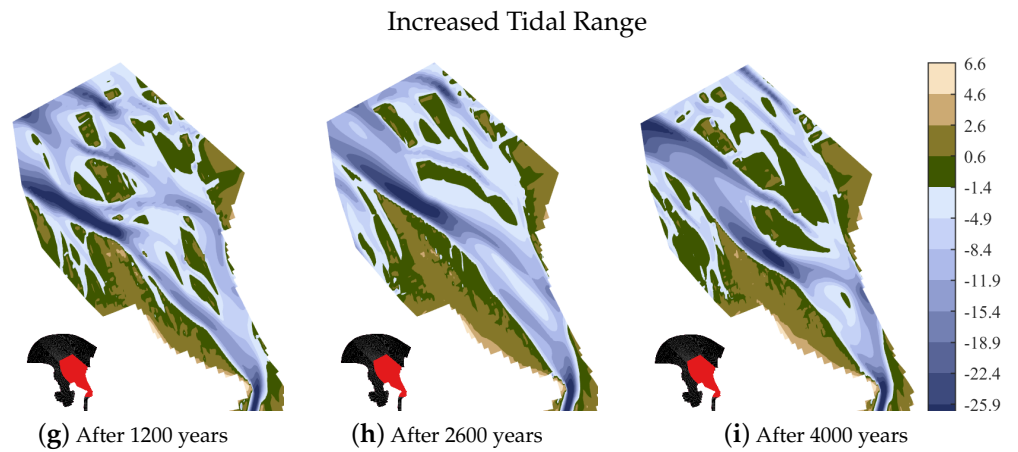
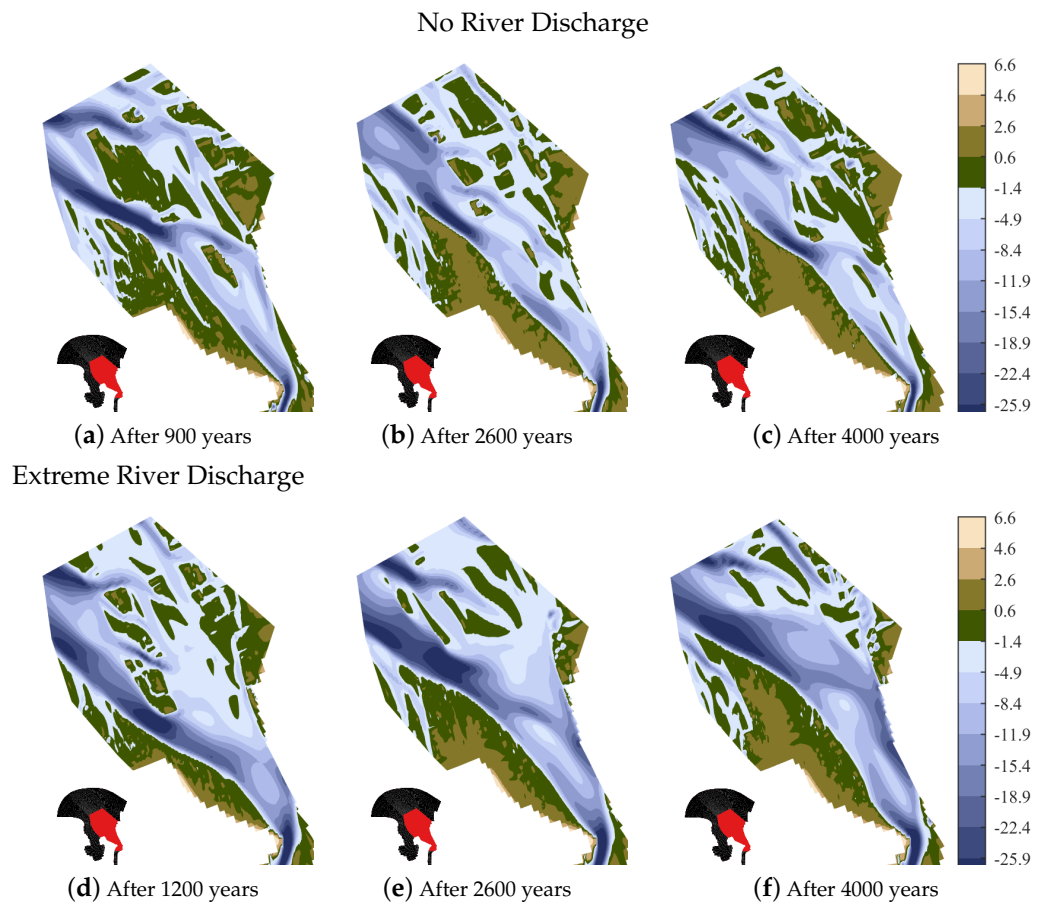


Figure A1. Cont.



**Figure A1.** Results of the tidal scenario simulations at three different times in years (hydrodynamic time times the morphological factor). The first time-step is selected based on equilibrium conditions. Clear distinction between the channel (blue colors) and shoal (earth colors).

*Appendix A.2. River Discharge Scenarios*



**Figure A2.** Results of the river discharge scenario simulations at three different times in years (hydrodynamic time multiplied with the morphological factor). The first shown time-step is selected based on equilibrium conditions. Clear distinction between the channel (blue colors) and shoal (earth colors) area.

## References

1. Vorwig, W.; Wiemann, U.; Kobbe, W. Seeschifffahrt und Häfen in Norddeutschland. In *Statistische Monatshefte Niedersachsen*; 11/2014; Landesamt für Statistik Niedersachsen (LSN): Hanover, Germany, 2014.
2. Plate, L. Die Weser als Seewasserstrasse: Bilanzbericht, Bericht f. d. Küsten-Ausschuß. 1951.
3. Lange, D. The weser estuary: Heide, Holstein: Boyens. *Die Küste* **2008**, *74*, 275–287.
4. Göhren, H. Beitrag zur Morphologie der Jade-und Wesermündung. *Die Küste* **1965**, *13*, 140–146.
5. Wetzel, V. Der Ausbau des Weserfahrwassers von 1921 bis heute. In *Jahrbuch der Hafenbautechnischen Gesellschaft*; Springer: Heidelberg, Germany, 1988; Volume 42, pp. 83–105.
6. De Swart, H.E.; Zimmerman, J. Morphodynamics of Tidal Inlet Systems. *Annu. Rev. Fluid Mech.* **2009**, *41*, 203–229. [[CrossRef](#)]
7. Roelvink, J.A.; Reniers, A.J.H.M. *A Guide to Modeling Coastal Morphology*; World Scientific: Hackensack, NJ, USA; London, UK, 2012.
8. Friedrichs, C.T. Barotropic tides in channelized estuaries. In *Contemporary Issues in Estuarine Physics*; Cambridge University Press: Cambridge, UK, 2010; pp. 27–61.
9. Van Veen, J. Ebb and flood channel systems in the netherlands tidal waters 1. *J. Coast. Res.* **2005**, *216*, 1107–1120. [[CrossRef](#)]
10. Marciano, R.; Wang, Z.B.; Hibma, A.; de Vriend, H.J.; Defina, A. Modeling of channel patterns in short tidal basins. *J. Geophys. Res.* **2005**, *110*, 1155. [[CrossRef](#)]
11. Roelvink, J.A. Coastal morphodynamic evolution techniques. *Coast. Eng.* **2006**, *53*, 277–287. [[CrossRef](#)]
12. Ranasinghe, R.; Swinkels, C.; Luijendijk, A.; Roelvink, D.; Bosboom, J.; Stive, M.; Walstra, D. Morphodynamic upscaling with the MORFAC approach: Dependencies and sensitivities. *Coast. Eng.* **2011**, *58*, 806–811. [[CrossRef](#)]
13. Van Maanen, B.; Coco, G.; Bryan, K.R. Modelling the effects of tidal range and initial bathymetry on the morphological evolution of tidal embayments. *Geomorphology* **2013**, *191*, 23–34. [[CrossRef](#)]
14. Nabi, M.; de Vriend, H.J.; Mosselman, E.; Sloff, C.J.; Shimizu, Y. Detailed simulation of morphodynamics: 2. Sediment pickup, transport, and deposition. *Water Resour. Res.* **2013**, *49*, 4775–4791. [[CrossRef](#)]
15. De Vriend, H.J.; Capobianco, M.; Chesher, T.; de Swart, H.E.; Latteux, B.; Stive, M. Approaches to long-term modelling of coastal morphology: A review. *Coast. Eng.* **1993**, *21*, 225–269. [[CrossRef](#)]
16. Dastgheib, A.; Roelvink, J.A.; Wang, Z.B. Long-term process-based morphological modeling of the Marsdiep Tidal Basin. *Mar. Geol.* **2008**, *256*, 90–100. [[CrossRef](#)]
17. Zhang, W.; Schneider, R.; Harff, J. A multi-scale hybrid long-term morphodynamic model for wave-dominated coasts. *Geomorphology* **2012**, *149–150*, 49–61. [[CrossRef](#)]
18. Van der Wegen, M.; Roelvink, J.A. Reproduction of estuarine bathymetry by means of a process-based model: Western Scheldt case study, the Netherlands. *Geomorphology* **2012**, *179*, 152–167. [[CrossRef](#)]
19. Dam, G.; van der Wegen, M.; Labeur, R.J.; Roelvink, D. Modeling centuries of estuarine morphodynamics in the Western Scheldt estuary. *Geophys. Res. Lett.* **2016**, *43*, 3839–3847. [[CrossRef](#)]
20. Herrling, G.; Benninghoff, M.; Zorndt, A.; Winter, C. Drivers of channel-shoal morphodynamics at the Outer Weser estuary. In *Proceedings of the 8th International Conference on Coastal Dynamics*, Helsingør, Denmark, 12–16 June 2017.
21. Hesse, R. Zur Modellierung des Transports kohäsiver Sedimente am Beispiel des Weserästuars. Ph.D. Thesis, Technische Universität Hamburg, Hamburg, Germany, 2020.
22. Lojek, O. Sensitivity Analysis of Single Storm Surges in the Jade-Weser Estuary. Ph.D. Thesis, Institutionelles Repositorium der Leibniz Universität Hannover, Hannover, Germany, 2020.
23. Kösters, F.; Winter, C. Exploring German Bight coastal morphodynamics based on modelled bed shear stress. *Geo-Mar. Lett.* **2014**, *34*, 21–36. [[CrossRef](#)]
24. Casulli, V.; Walters, R.A. An unstructured grid, three-dimensional model based on the shallow water equations. *Int. J. Numer. Methods Fluids* **2000**, *32*, 331–348. [[CrossRef](#)]
25. Luan, H.L.; Ding, P.X.; Wang, Z.B.; Ge, J.Z. Process-based morphodynamic modeling of the Yangtze Estuary at a decadal timescale: Controls on estuarine evolution and future trends. *Geomorphology* **2017**, *290*, 347–364. [[CrossRef](#)]
26. Laurer, W.; Naumann, M.; Zeiler, M. Erstellung der Karte zur Sedimentverteilung auf dem Meeresboden in der deutschen Nordsee nach der Klassifikation von FIGGE (1981). *Geopotenzial Dtsch. Nordsee Modul B Dok.* **2014**, *1*, 1–19.
27. Vos, P.C.; Knol, E. Holocene landscape reconstruction of the Wadden Sea area between Marsdiep and Weser. *Neth. J. Geosci.* **2015**, *94*, 157–183. [[CrossRef](#)]
28. Ramacher, H. Der Ausbau von Unter-und Außenweser. In *Mitteilungen des Franzius Instituts*; TU Hannover: Hanover, Germany, 1974; Volume 41.
29. BfG. *Sedimentmanagementkonzept Tideweser: Untersuchung im Auftrag der WSÄ Bremen und Bremerhaven*; BfG: Koblenz, Germany, 2014.
30. Plate, L. Forschungen als Grundlage für den Ausbau der Aussenweser. *Dtsch. Wasserwirtsch.* **1935**, *4*, 66–74.
31. Wang, Z.B.; Louters, T.; de Vriend, H.J. Morphodynamic modelling for a tidal inlet in the Wadden Sea. *Mar. Geol.* **1995**, *126*, 289–300. [[CrossRef](#)]
32. Lesser, G.R.; Roelvink, J.A.; van Kester, J.; Stelling, G.S. Development and validation of a three-dimensional morphological model. *Coast. Eng.* **2004**, *51*, 883–915. [[CrossRef](#)]
33. Deltares. *Delft3D-FLOW User Manual*; Deltares: Delft, The Netherlands, 2021.

34. Engelund, F.; Hansen, E. *A Monograph on Sediment Transport in Alluvial Streams*; Technical University of Denmark: Copenhagen K, Denmark, 1967.
35. Guo, L.; van der Wegen, M.; Roelvink, D.; Wang, Z.B.; He, Q. Long-term, process-based morphodynamic modeling of a fluvio-deltaic system, part I: The role of river discharge. *Cont. Shelf Res.* **2015**, *109*, 95–111. [[CrossRef](#)]
36. Reyns, J.; Dastgheib, A.; Ranasinghe, R.; Luijendijk, A.; Walstra, D.J.; Roelvink, D. Morphodynamic upscaling with the morfac approach in tidal conditions: The critical morfac. *Coast. Eng. Proc.* **2015**, *1*, 27. [[CrossRef](#)]
37. Bagnold, R.A. *An Approach to the Sediment Transport Problem from General Physics*; US Government Printing Office: Washington, DC, USA, 1966.
38. Ikeda, S. Lateral bed load transport on side slopes. *J. Hydraul. Div.* **1982**, *108*, 1369–1373. [[CrossRef](#)]
39. Walstra, D.; Ormondt, M.V.; Roelvink, J. *Shoreface Nourishment Scenarios: Detailed Morphodynamic Simulations with Delft3D for Various Shoreface Nourishment Designs*; Deltares: Delft, The Netherlands, 2004.
40. Van Rijn, L.C. *Principles of Sediment Transport in Rivers, Estuaries and Coastal Seas*; Aqua Publications: Amsterdam, The Netherlands, 1993.
41. Baar, A.; Albernaz, M.B.; Van Dijk, W.; Kleinhans, M. Critical dependence of morphodynamic models of fluvial and tidal systems on empirical downslope sediment transport. *Nat. Commun.* **2019**, *10*, 1–12. [[CrossRef](#)] [[PubMed](#)]
42. Lesser, G.R. *An Approach to Medium-Term Coastal Morphological Modelling*; IHE Delft Institute for Water Education: Delft, The Netherlands, 2009.
43. Dissanayake, D.; Roelvink, J.; Van der Wegen, M. Modelled channel patterns in a schematized tidal inlet. *Coast. Eng.* **2009**, *56*, 1069–1083. [[CrossRef](#)]
44. Latteux, B. Techniques for long-term morphological simulation under tidal action. *Mar. Geol.* **1995**, *126*, 129–141. [[CrossRef](#)]
45. Bernardes, M.E.; Davidson, M.A.; Dyer, K.R.; George, K.J. Towards medium-term (order of months) morphodynamic modelling of the Teign estuary, UK. *Ocean Dyn.* **2006**, *56*, 186–197. [[CrossRef](#)]
46. BAW. *Erzeugung naturähnlicher Randwerte für den seeseitigen Rand von Ästuarmodellen an der Nordsee. (BAW-Bericht A 395 502 10059)*; BAW: Hamburg, Germany, 2014.
47. Geopotenzial Deutsche Nordsee. *Die Neue Holozänbasis der Niedersächsischen Nordseeküste*; Landesamt für Bergbau, Energie und Geologie (LBEG): Hanover, Germany, 2013.
48. Boyd, R.; Dalrymple, R.; Zaitlin, B.A. Classification of clastic coastal depositional environments. *Sediment. Geol.* **1992**, *80*, 139–150. [[CrossRef](#)]
49. Brown, T. Kelvin wave reflection at an oscillating boundary with applications to the North Sea. *Cont. Shelf Res.* **1987**, *7*, 351–365. [[CrossRef](#)]
50. Hovmöller, E. The trough-and-ridge diagram. *Tellus* **1949**, *1*, 62–66. [[CrossRef](#)]
51. Yu, Q.; Wang, Y.; Gao, S.; Flemming, B. Modeling the formation of a sand bar within a large funnel-shaped, tide-dominated estuary: Qiantangjiang Estuary, China. *Mar. Geol.* **2012**, *299*, 63–76. [[CrossRef](#)]
52. Cramer, F.; Shephard, G.E.; Heron, P.J. The misuse of colour in science communication. *Nat. Commun.* **2020**, *11*, 1–10. [[CrossRef](#)] [[PubMed](#)]