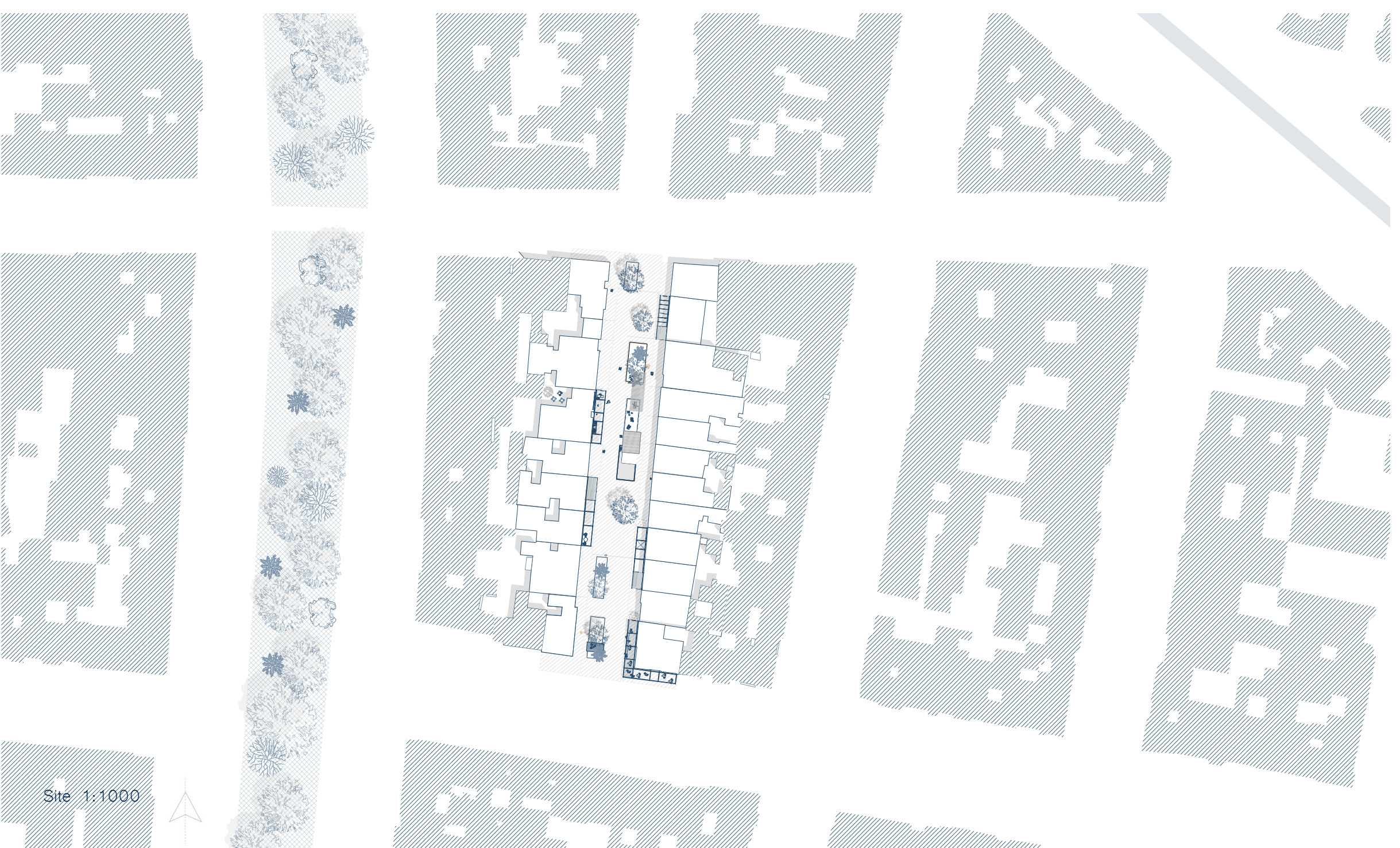


Spaces of Permanence

Isabel Ulbrich

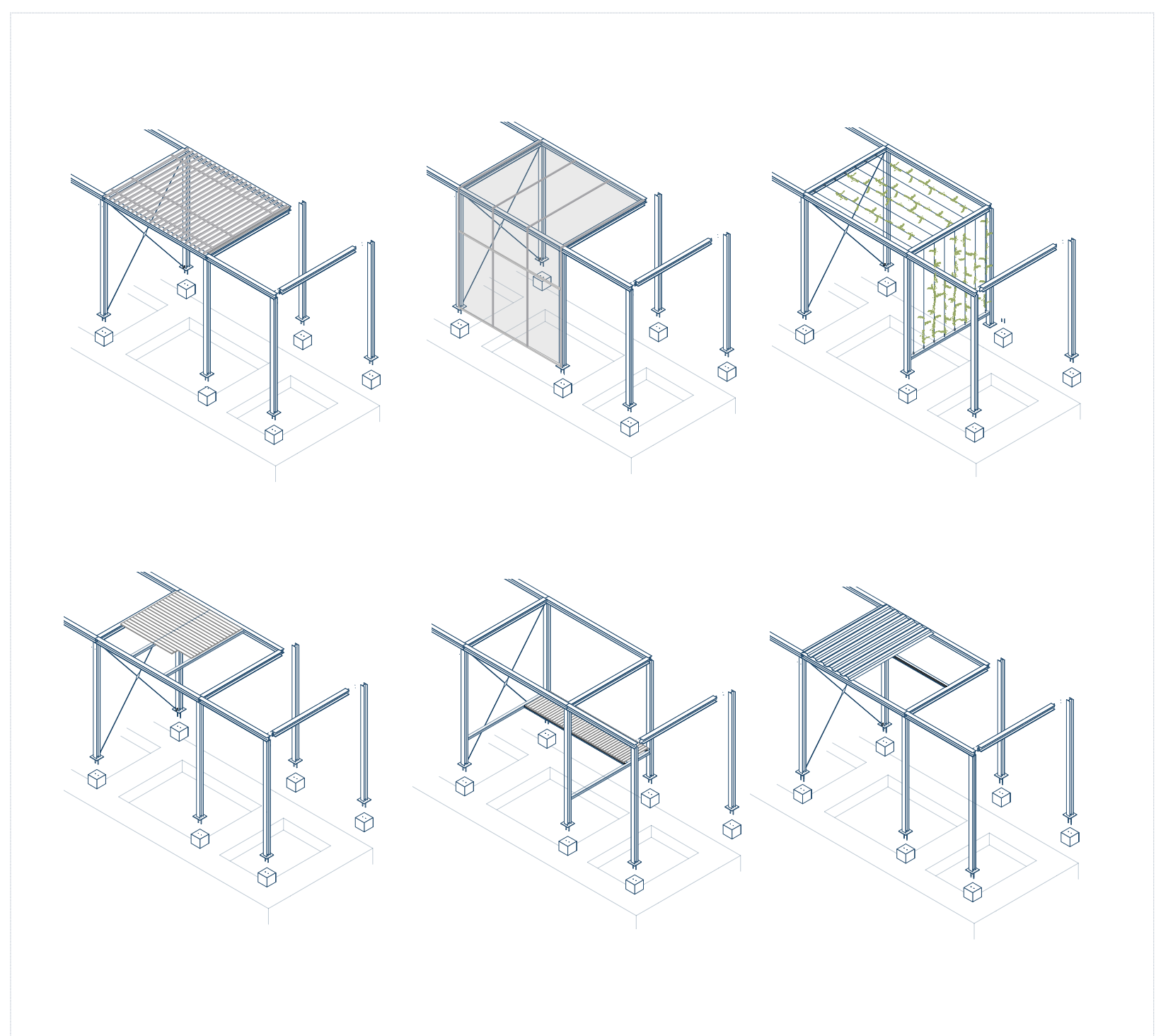
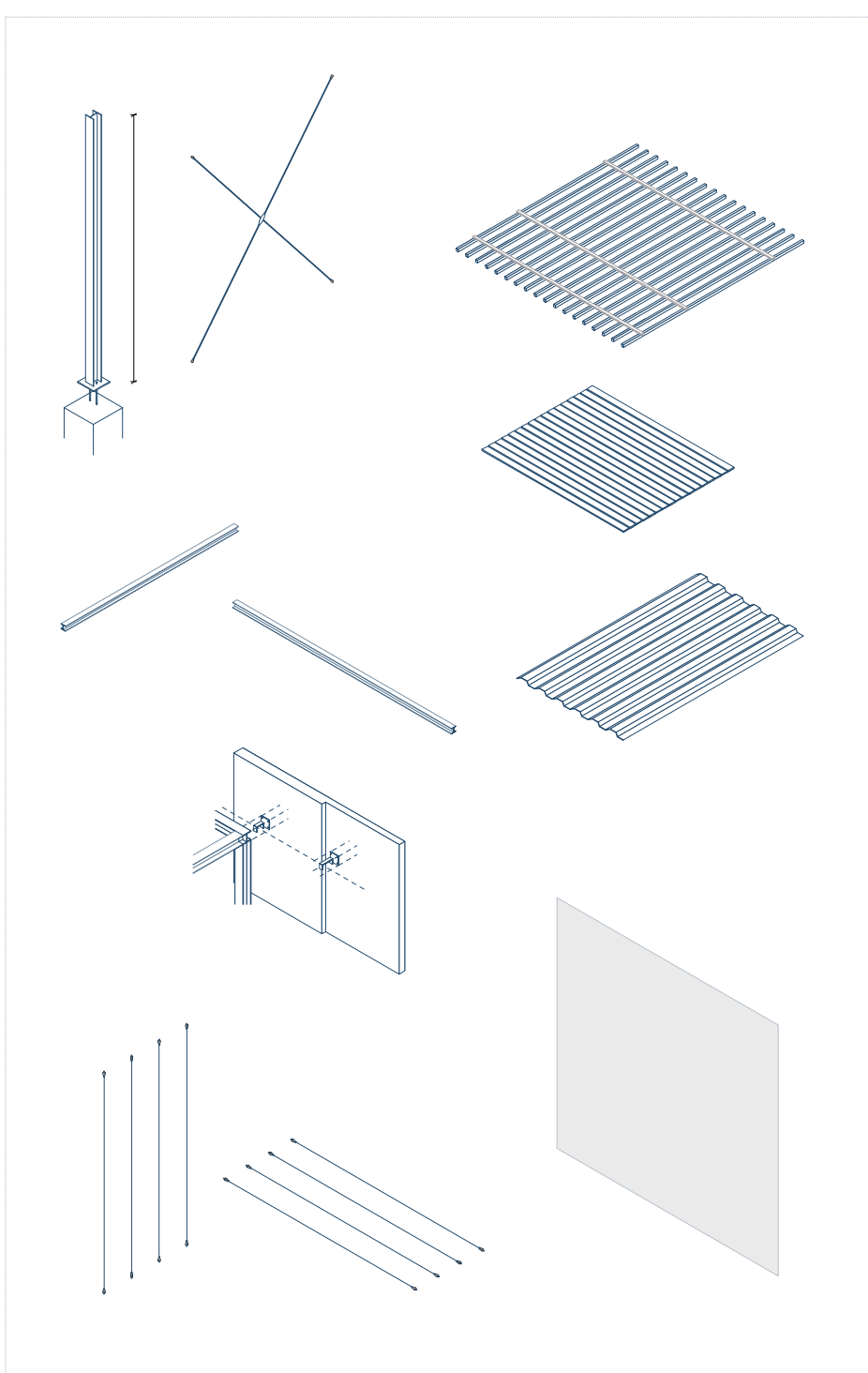


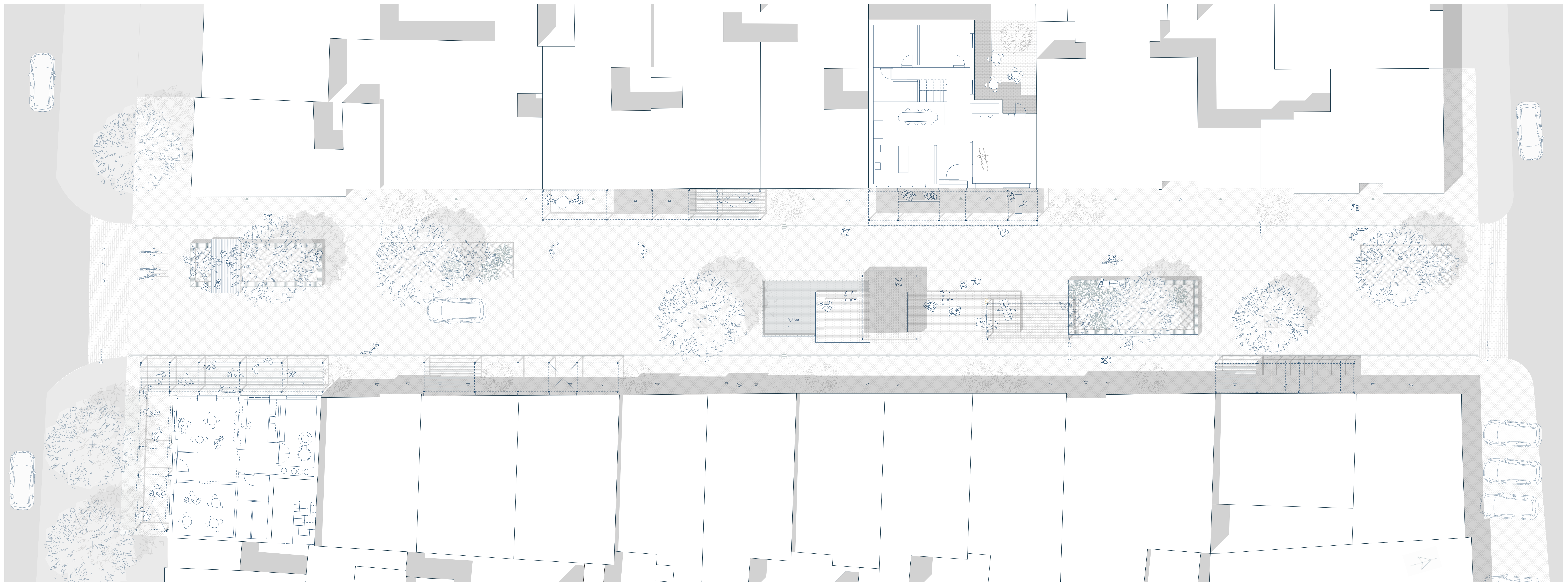
Impressions





Perspective Sections 1:50





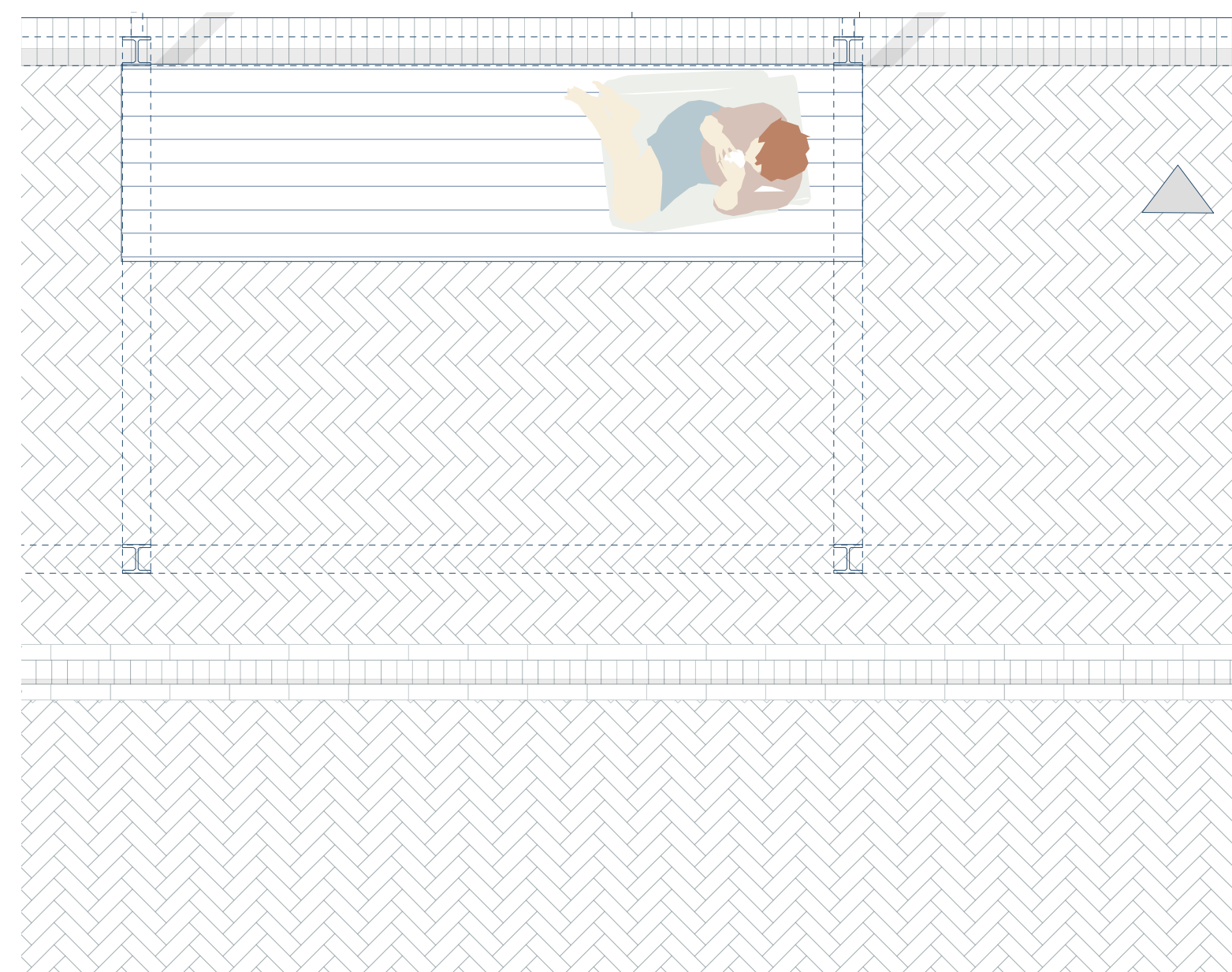
Floorplan 1:100



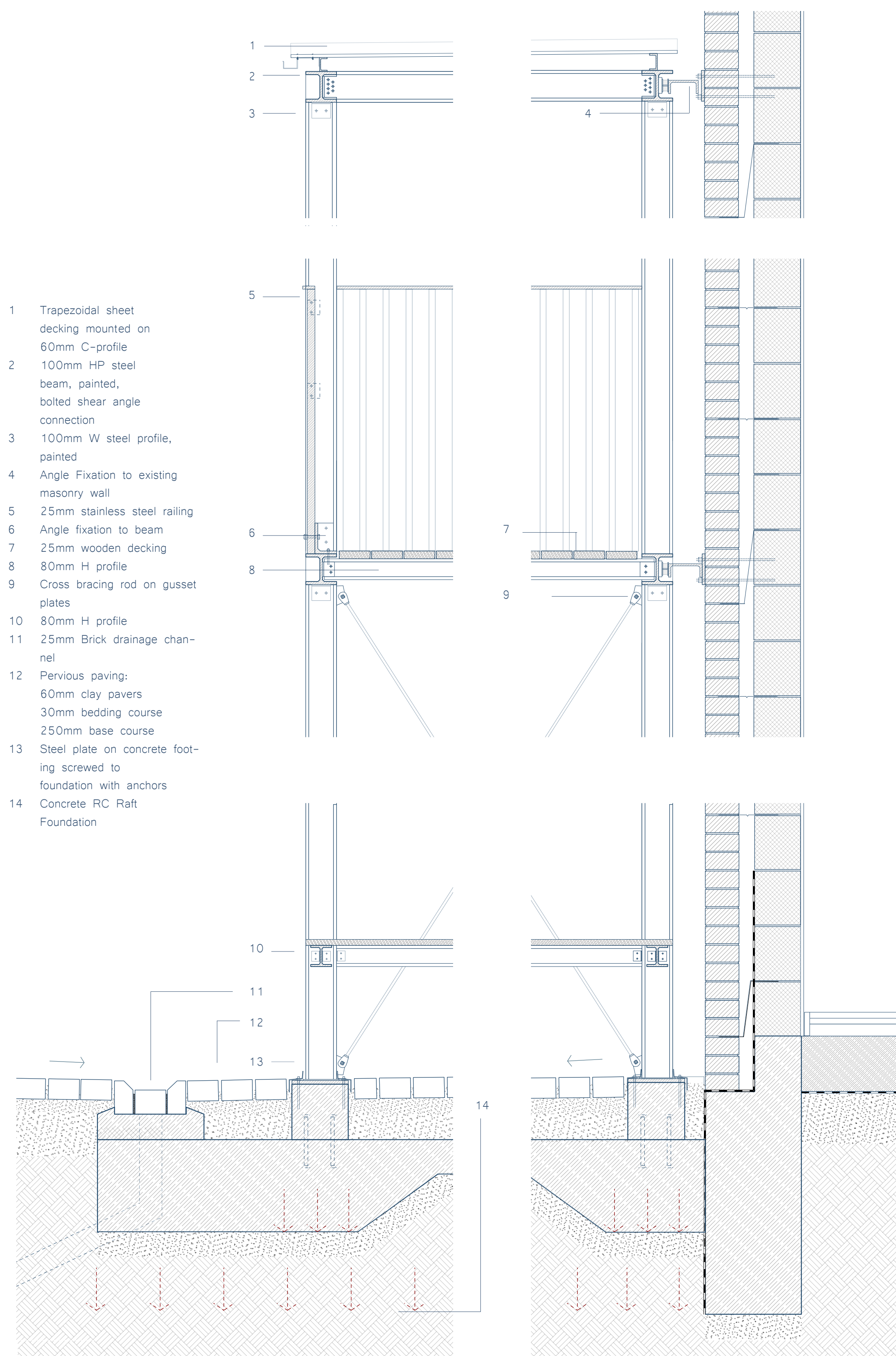
Section 1:100



- 1 Trapezoidal sheet decking mounted on 60mm C-profile
- 2 100mm HP steel beam, painted, bolted shear angle connection
- 3 100mm W steel profile, painted
- 4 Angle Fixation to existing masonry wall
- 5 25mm stainless steel railing
- 6 Angle fixation to beam
- 7 25mm wooden decking
- 8 80mm H profile
- 9 Cross bracing rod on gusset plates
- 10 80mm H profile
- 11 25mm Brick drainage channel
- 12 Pervious paving: 60mm clay pavers, 30mm bedding course, 250mm base course
- 13 Steel plate on concrete footing, screwed to foundation with anchors
- 14 Concrete RC Raft Foundation



Floorplan 1:50

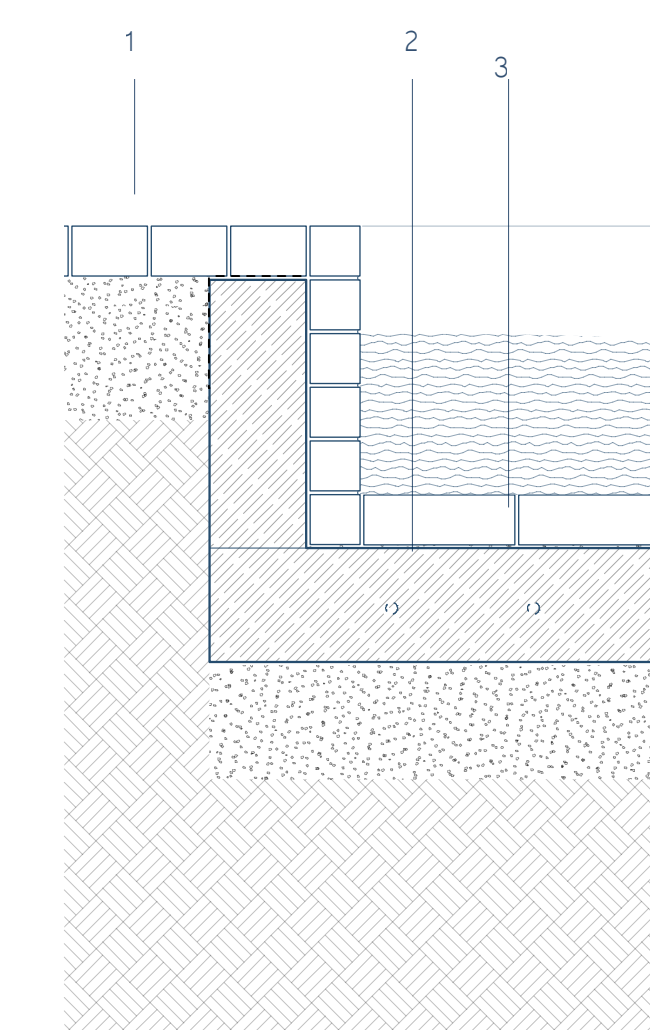


Detail Drainage, Foundation Base and Structural connections 1:10



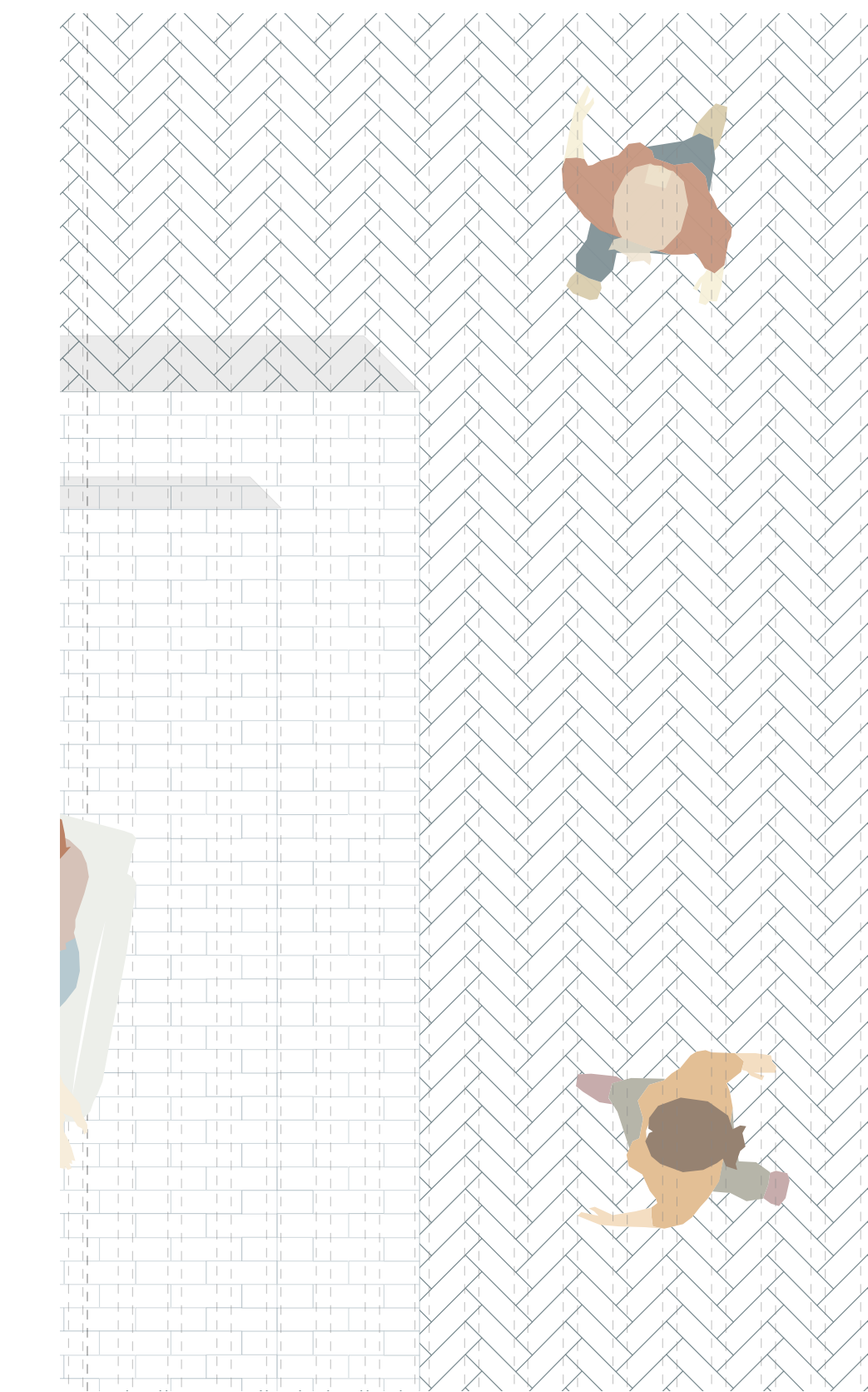
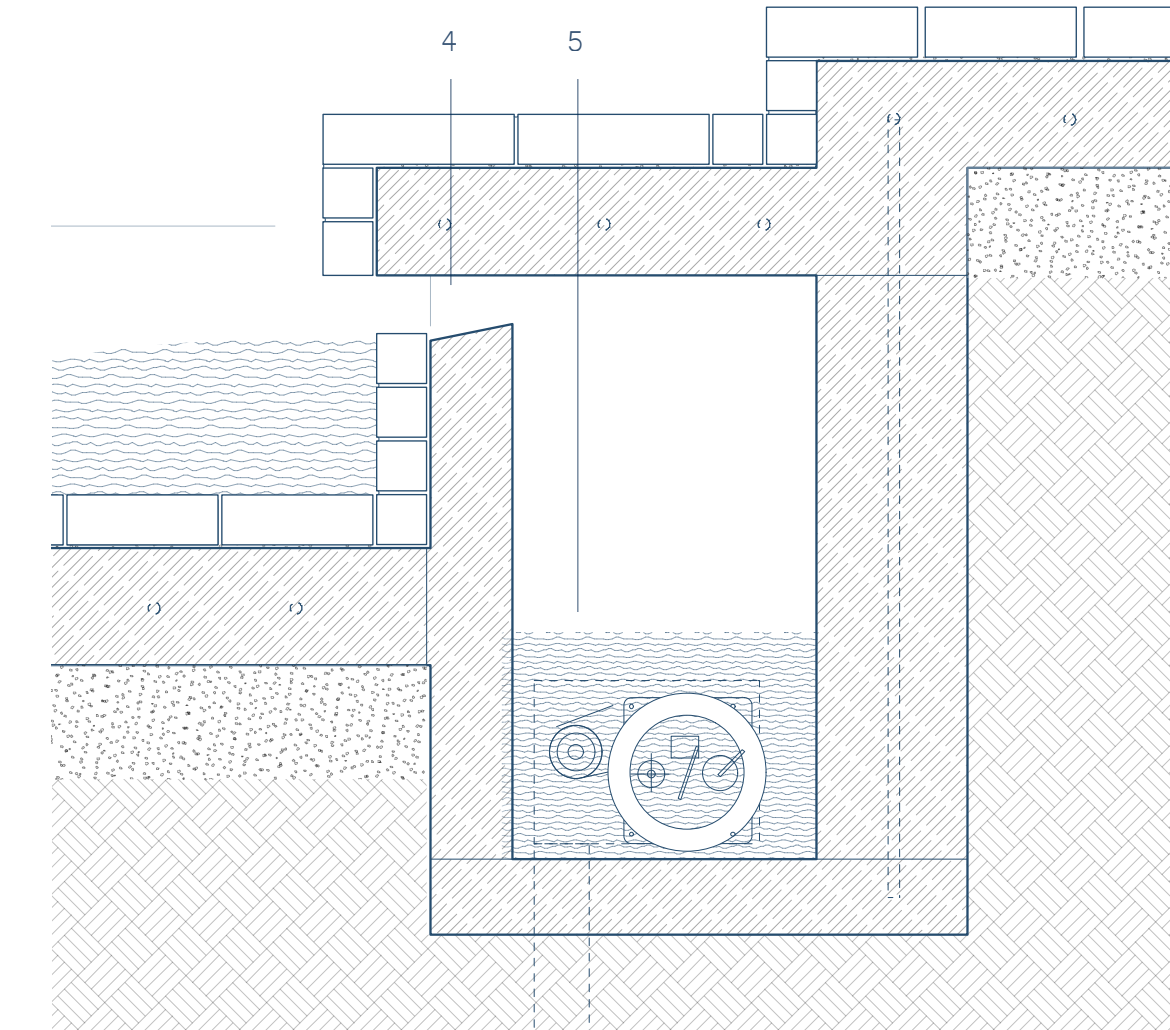
Floorplan 1:25

- 1 60mm clay pavers
- 2 Concrete basin
- 3 60mm clay paver attached with mortared joints



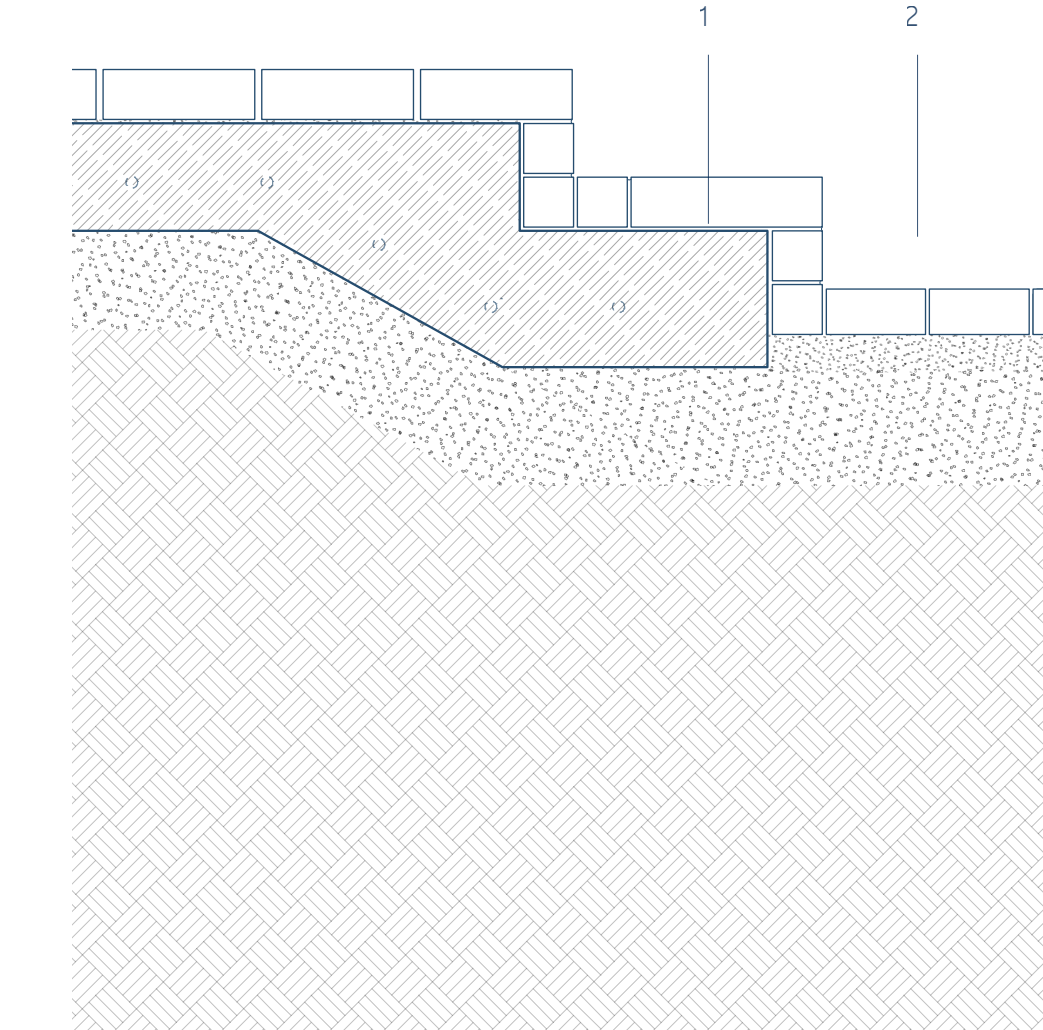
Detail Pool Connection, Terrasse, 1:10

- 4 Overflow edge
- 5 Back-up tank with submersible pump and filter

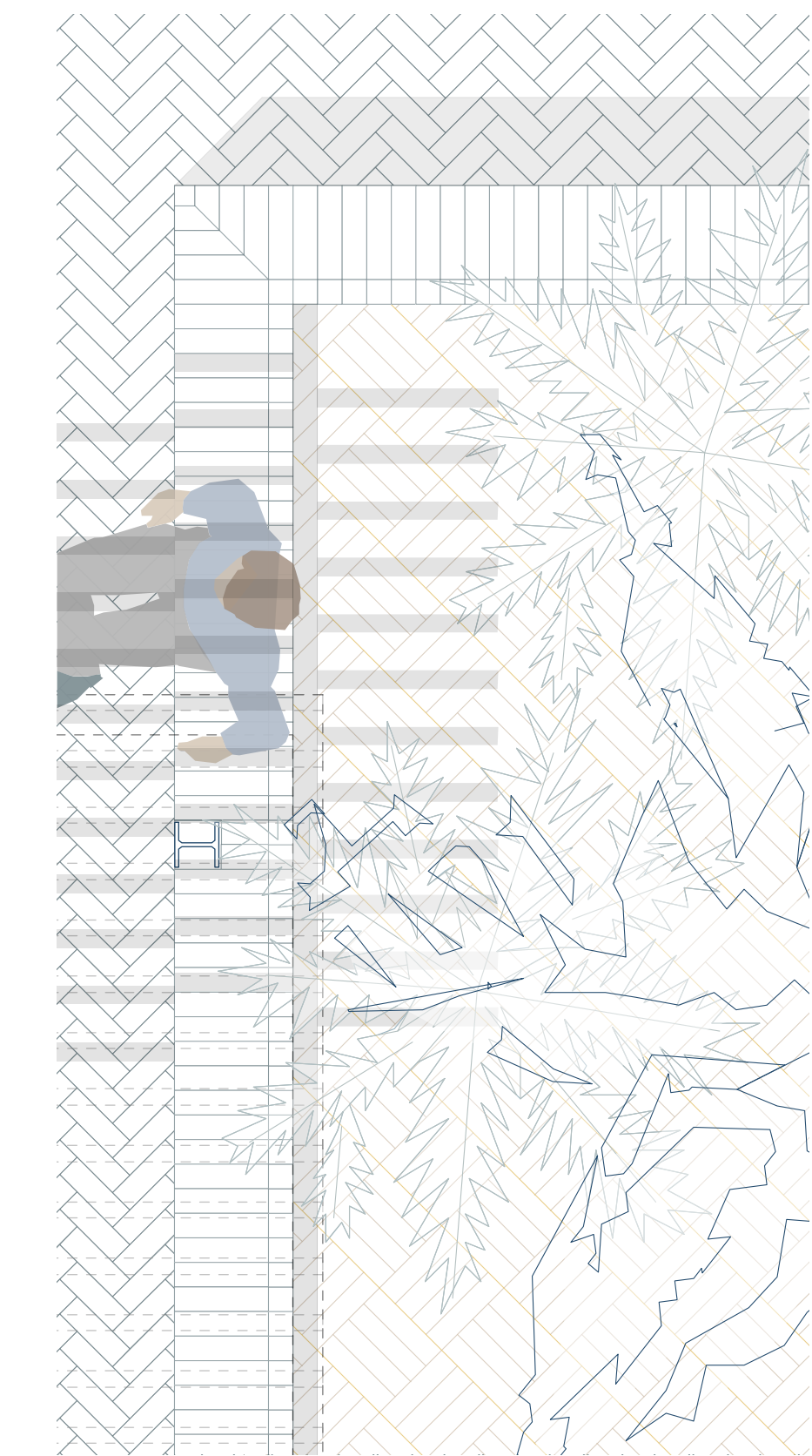


Floorplan 1:25

- 1 100-150mm reinforced concrete
- 2 60mm clay pavers
- 3 50mm Cavity
- 4 Concrete Footing
- 5 250 x 200mm concrete blocks
- 6 Damp proofing

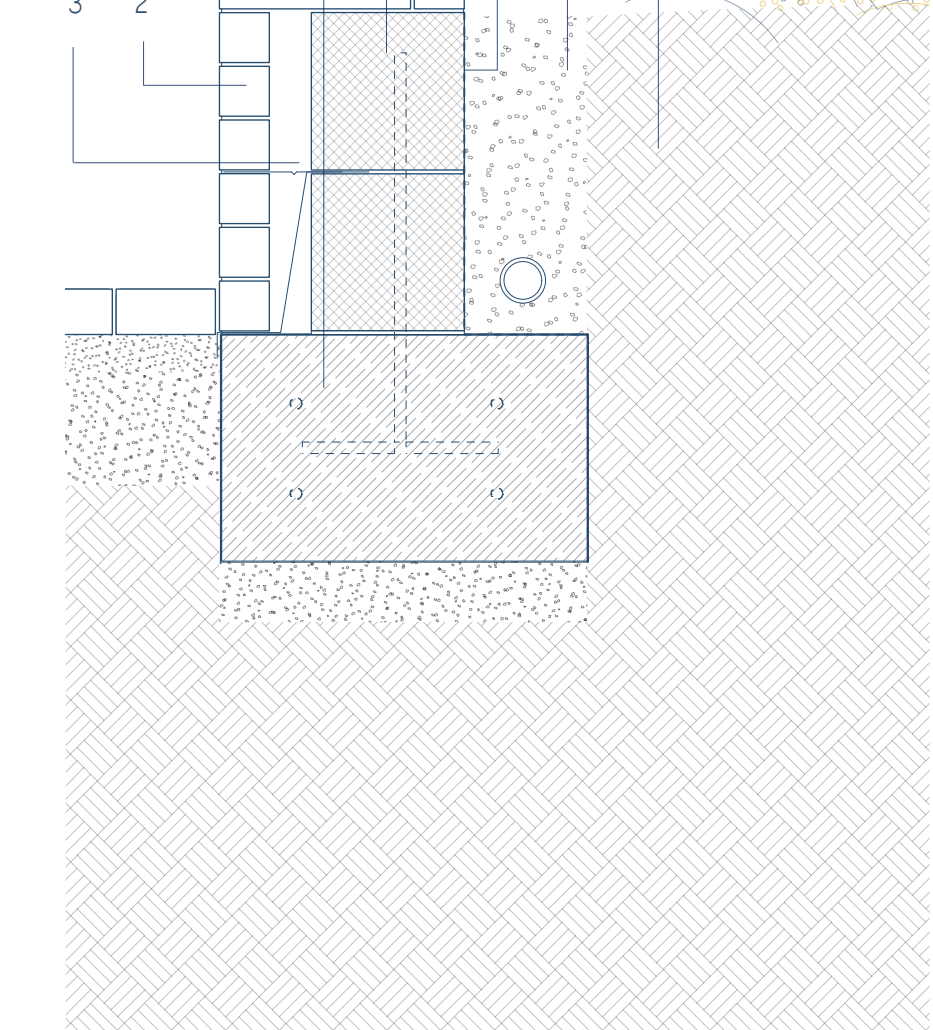


Detail Terrace Connection, Planter, 1:10

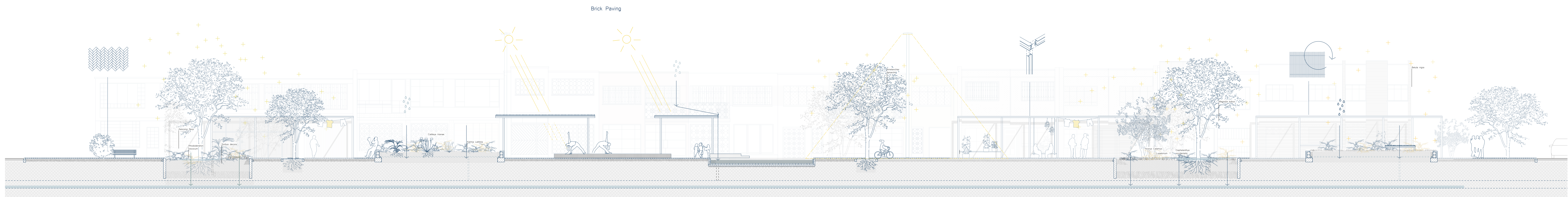


Floorplan 1:50

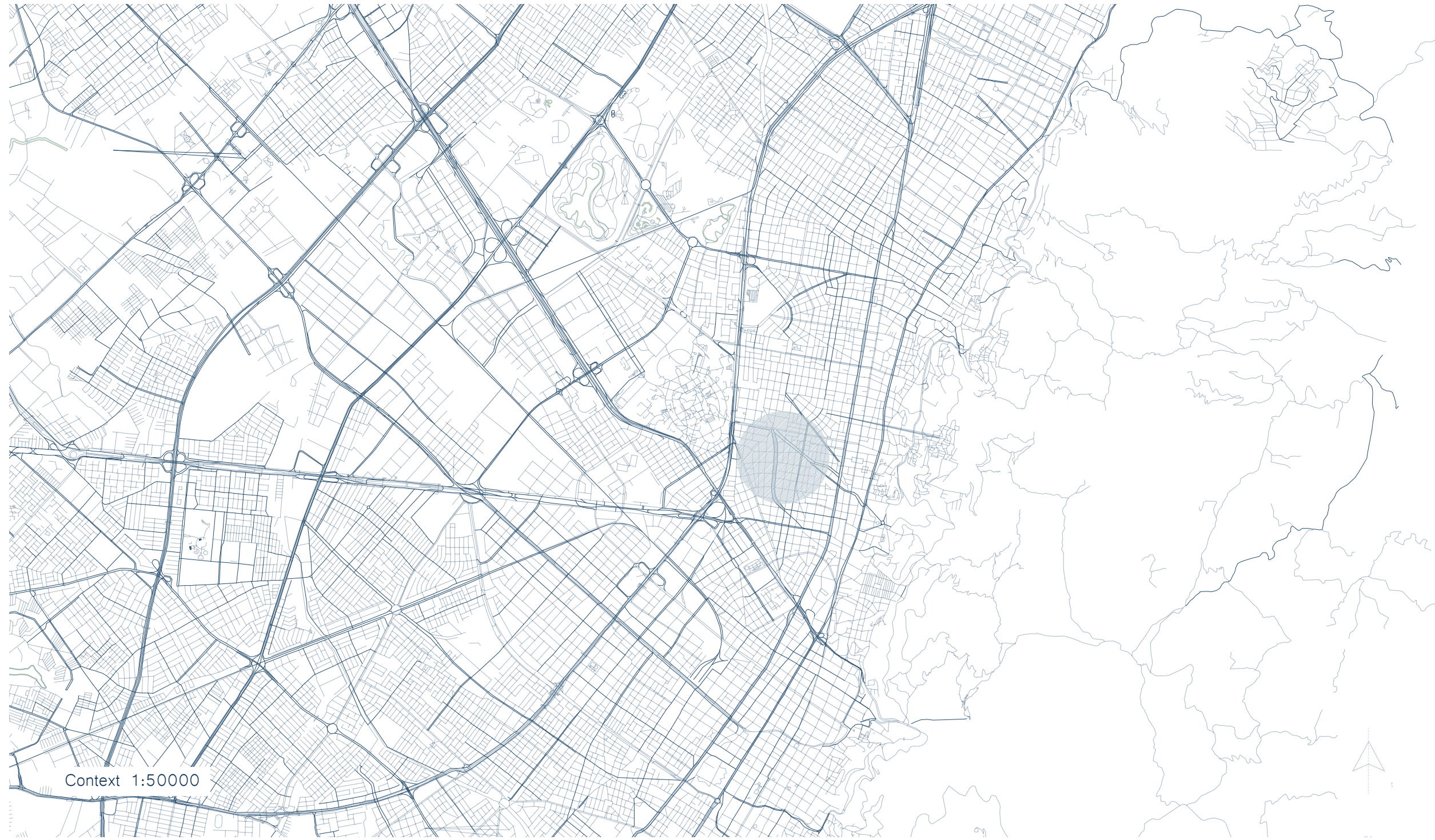
- 7 Open graded stone with 60mm perforated drain line
- 8 plant soil



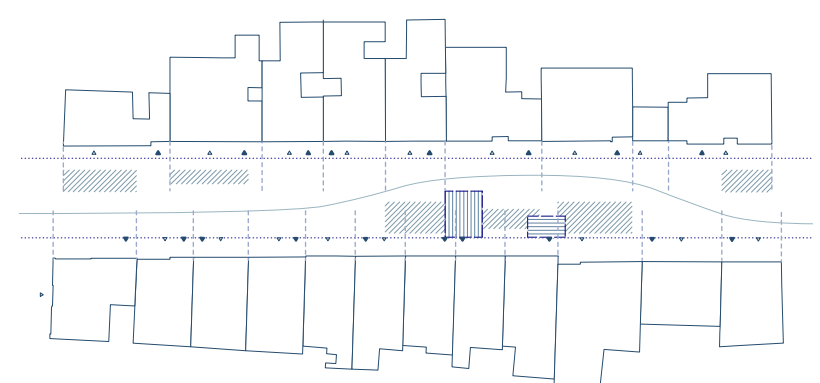
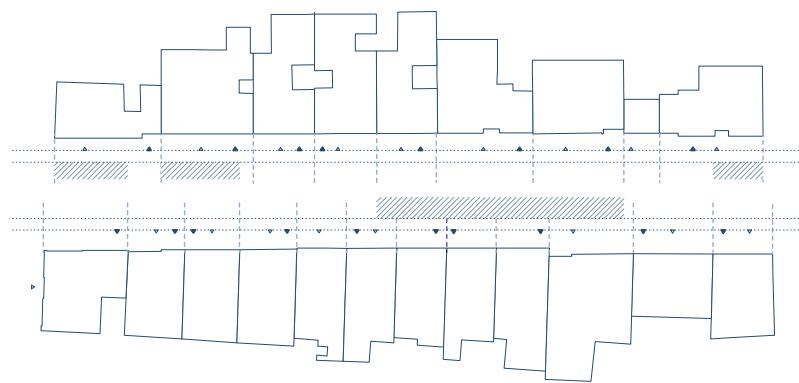
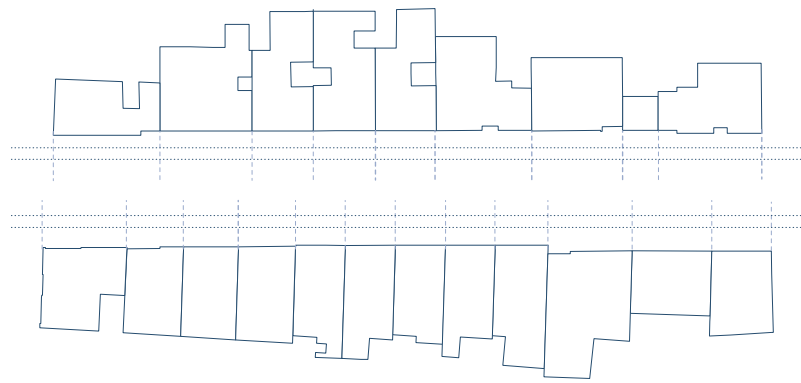
- Brick Paving
Local material, short transportation distances
- Bioretention planter
Retains and filters stormwater runoff
- Vegetation
Native plants increase biodiversity and airpurificatin
- Flow-through planter
Reduces stormwater runoff, effective absorption and infiltration
- Solar Shading
- Solar Shading
Rainwater directed into pool
- Water retention pool
Rain- and stormwater collection
- Vegetation
- LED Lighting
Low energy consumption
- Modular Steel Construction
Demountable lightweight structure
Adaptable, recycled structural steel
- Bioretention planter
Retains and filters stormwater runoff
- Reuse
Existing fences become Pergola roofs
- Flow-through planter



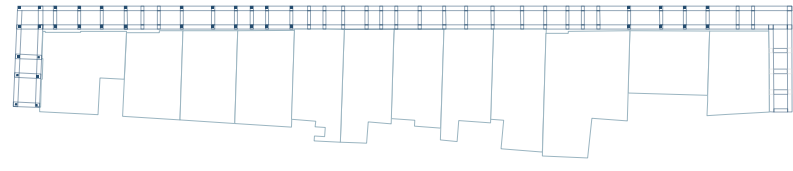
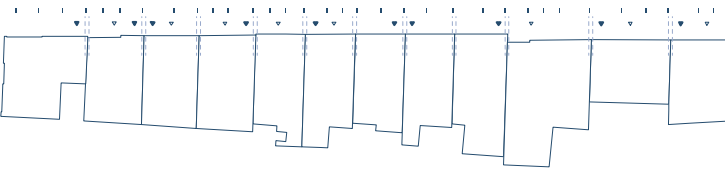
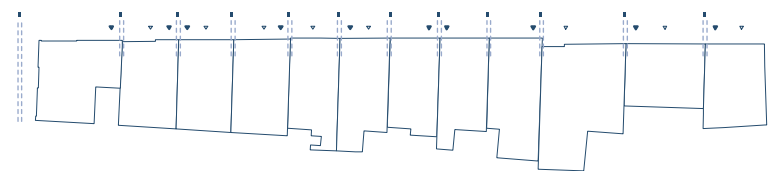
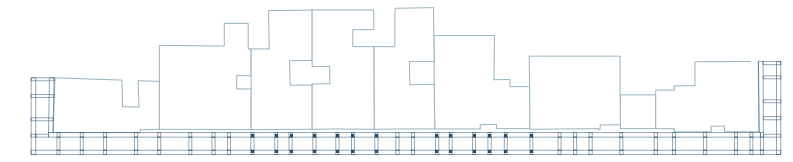
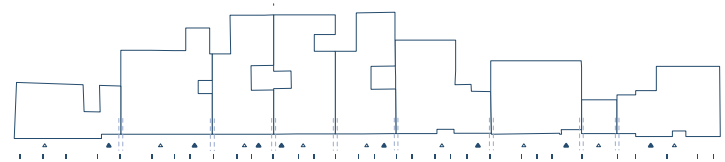
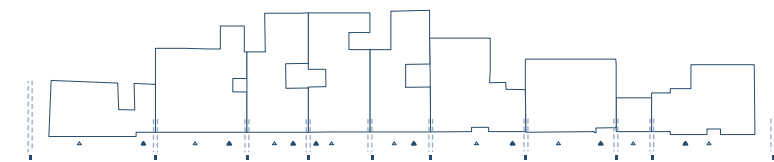
Climate 1:100



Context 1:50000

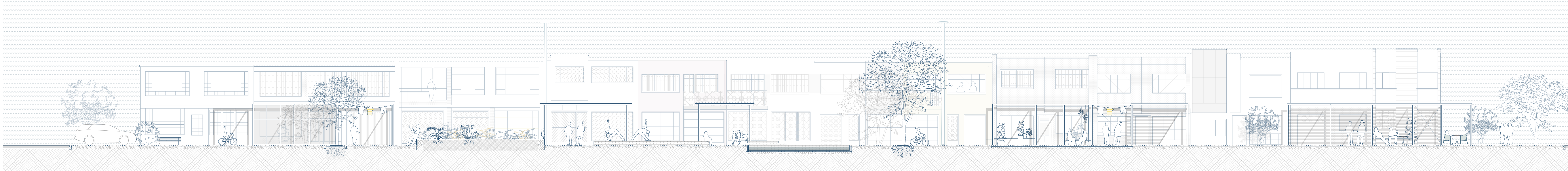


Strategic Development Landscaping

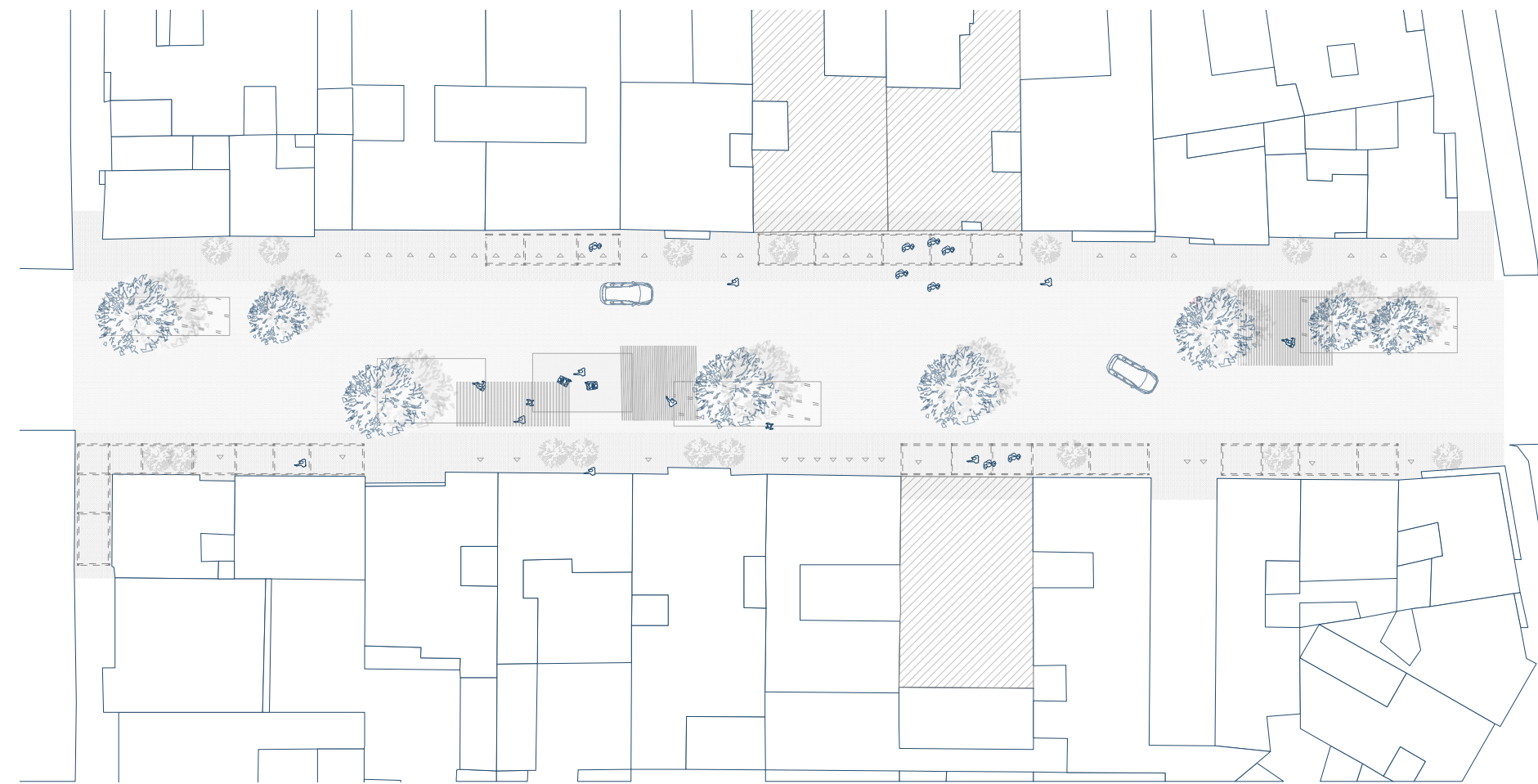


Strategic Development Facade Structure and Foundation

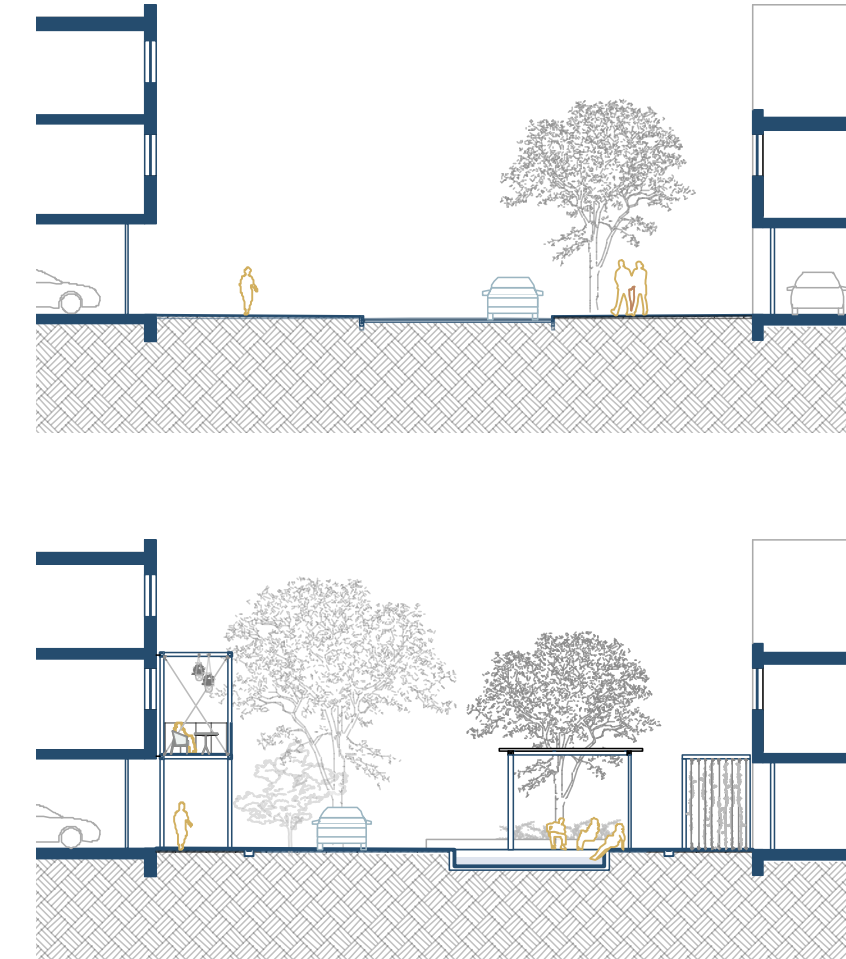




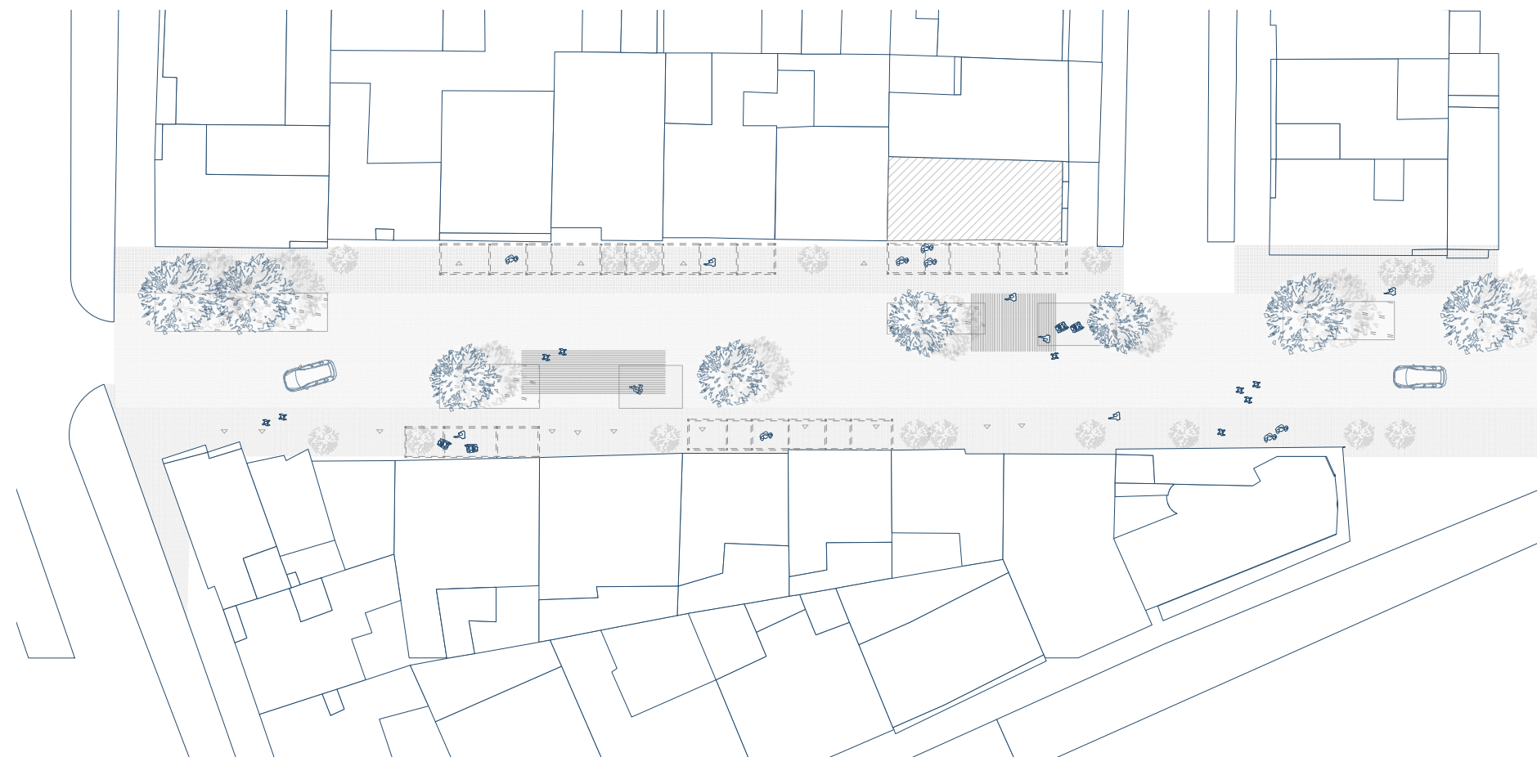
Section 1:100



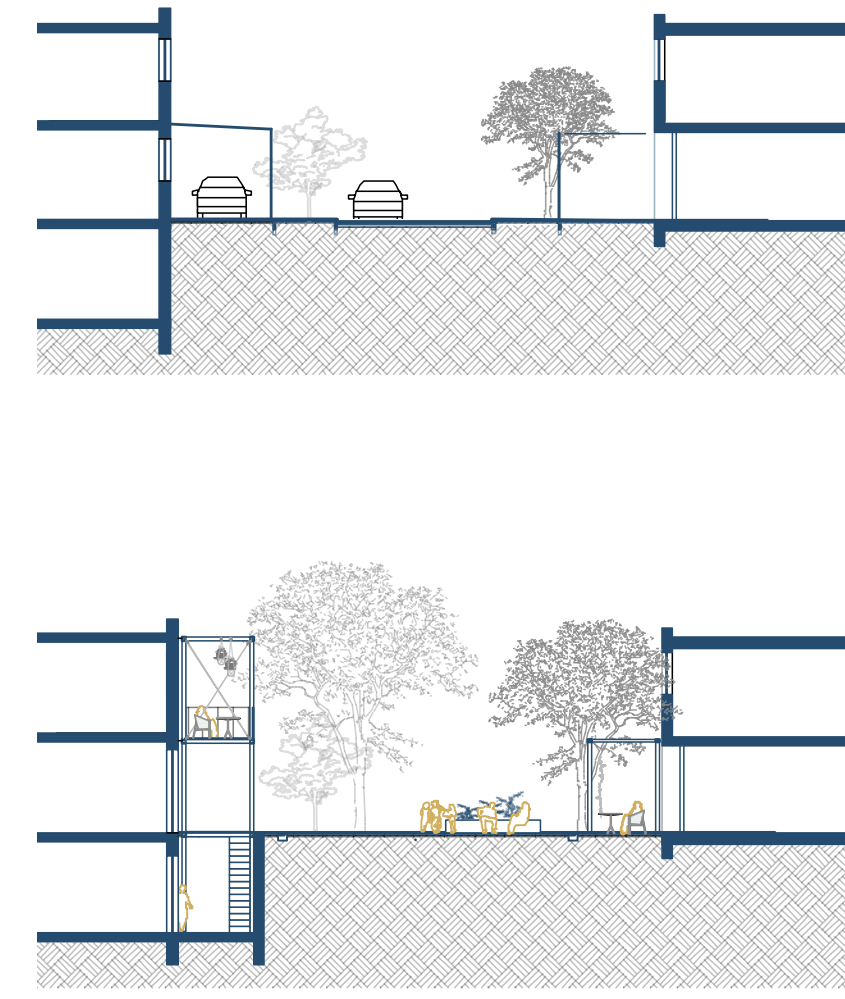
Carrera 20
System Street 1:500



Section 1:200



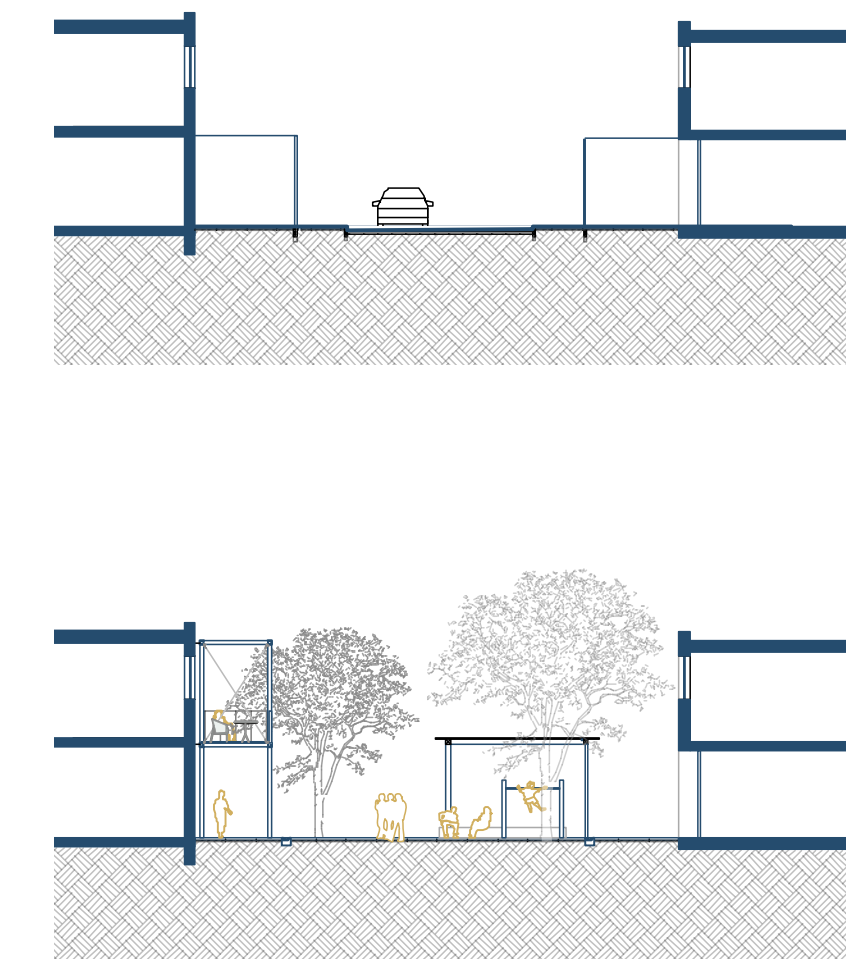
Carrera 28a
System Street 1:500



Section 1:200



Transversal 28a
System Street 1:500



Section 1:200