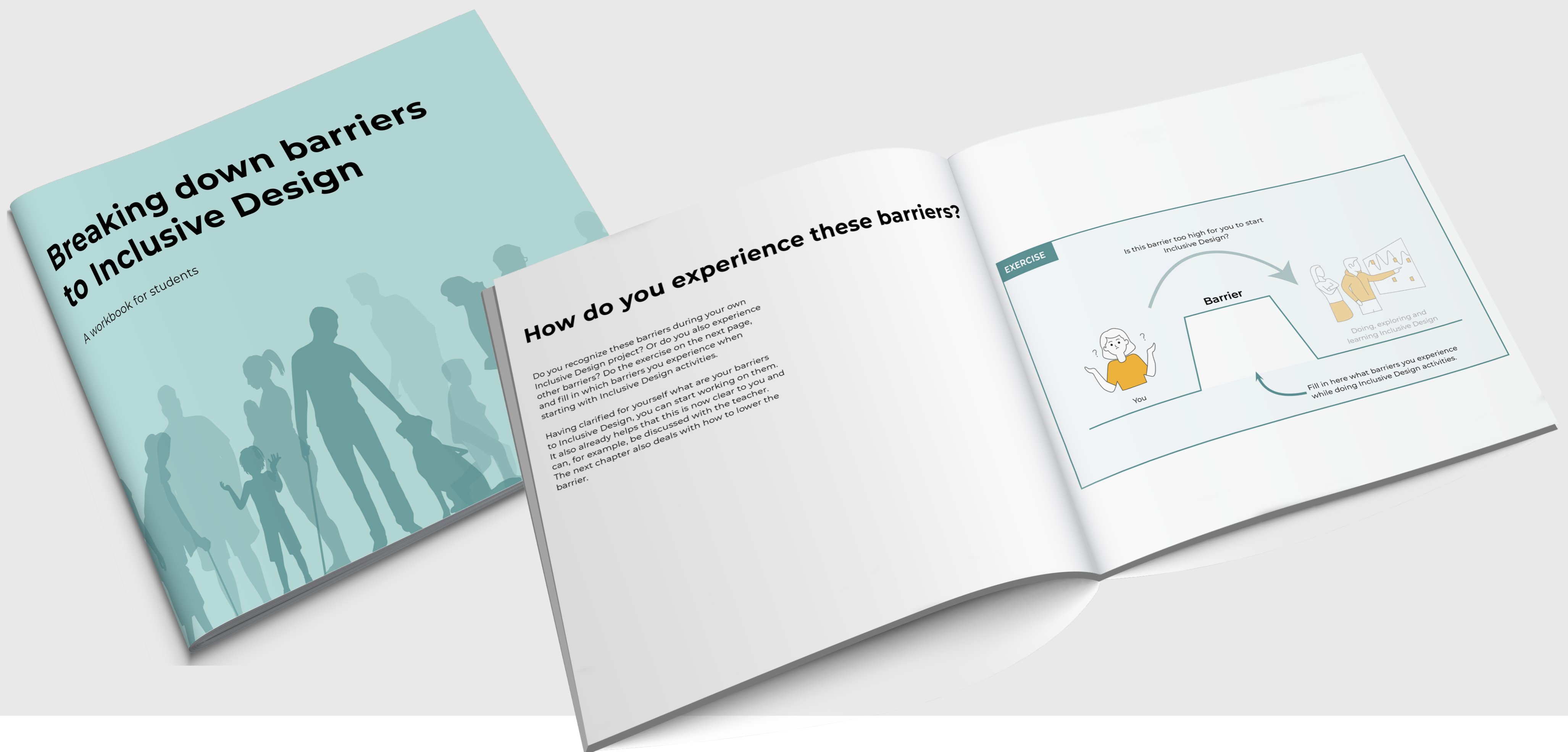


Breaking down barriers to Inclusive Design

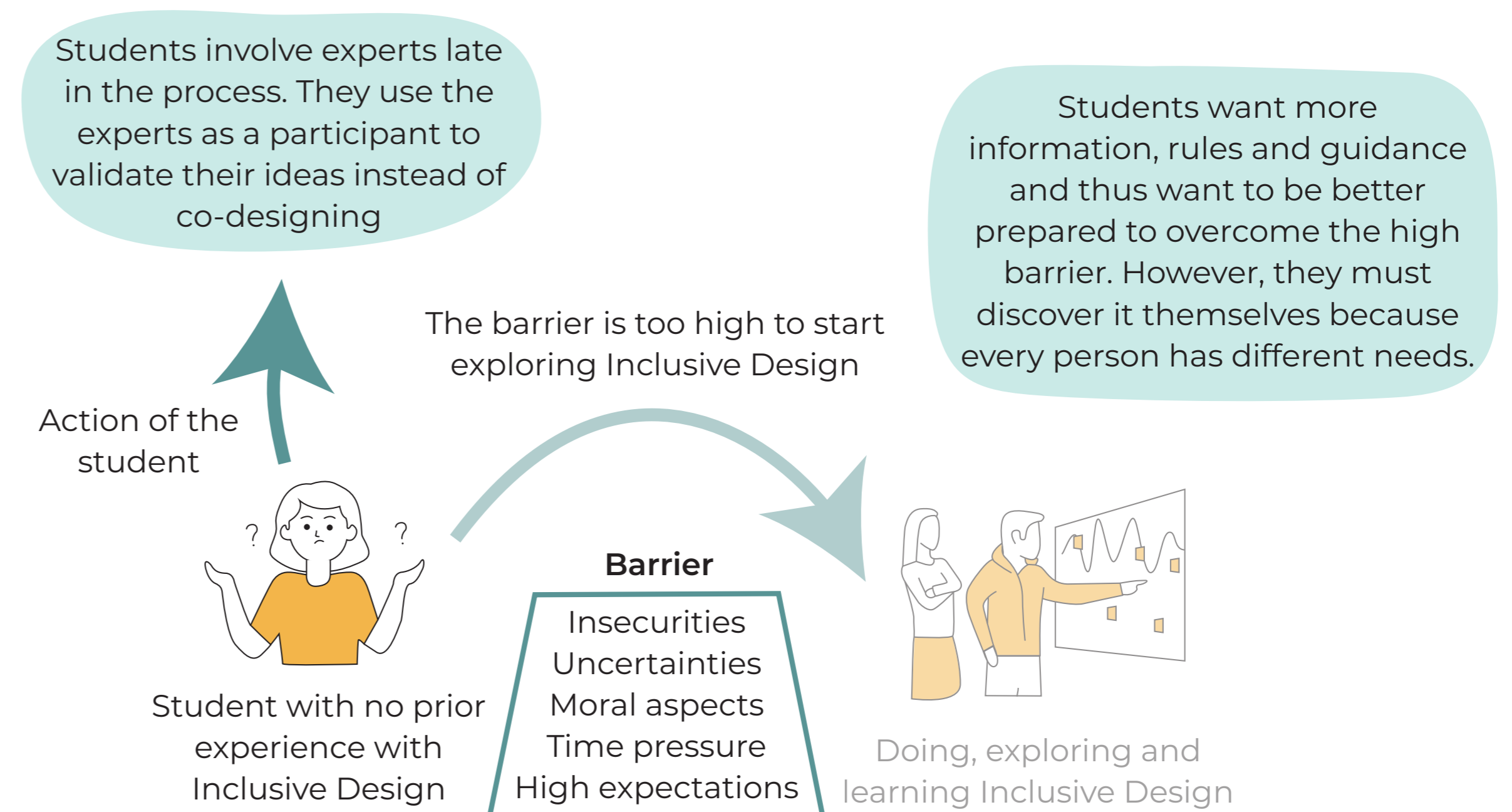
Creating a safe learning environment for Industrial Design Engineering students



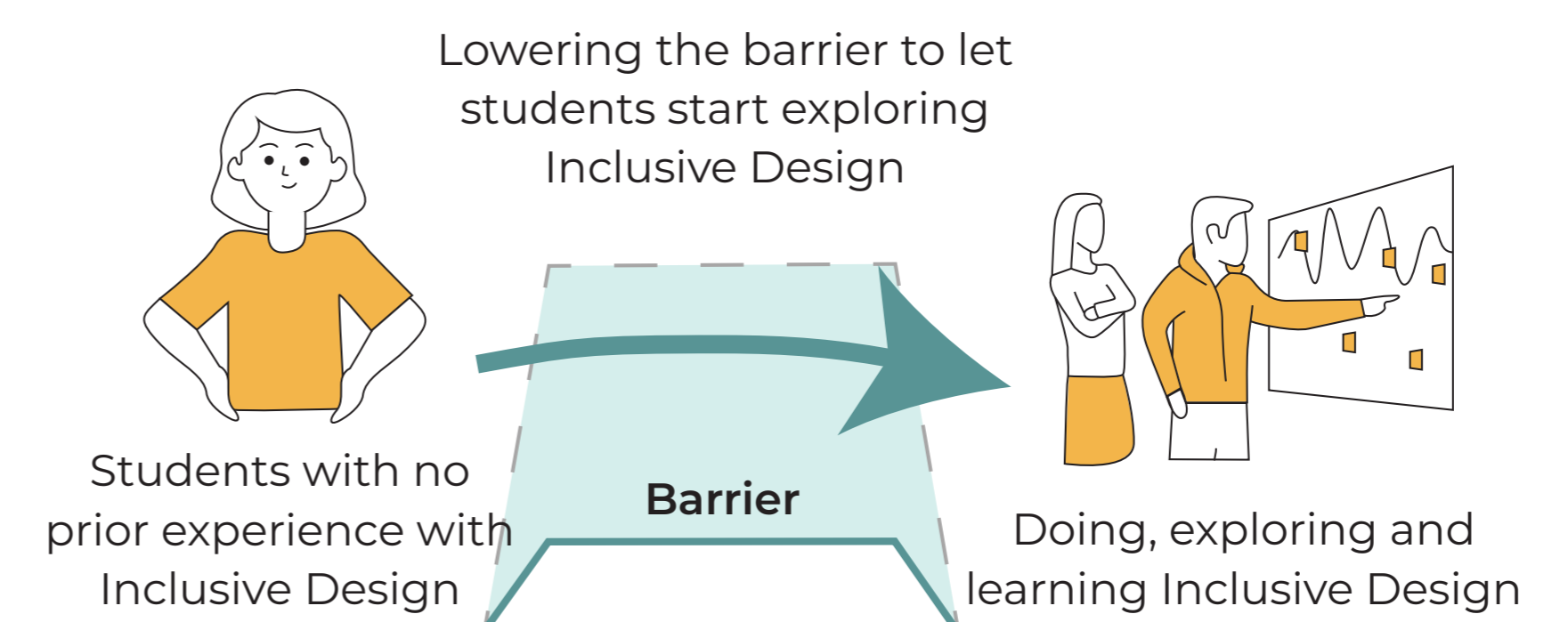
I researched the context of Inclusive Design activities by Industrial Design Engineering students at Delft Technical University. I studied students' perspectives on how they (want to) experience Inclusive Design projects. To allow students to explore Inclusive Design activities, a safe learning environment has to be created to lower the barrier to Inclusive Design. To achieve this safe learning environment, the design team, consisting of experts and students, should get to know each other, trust each other, and build a connection. This should ensure that each team member feels safe, supported and comfortable exploring during an Inclusive Design project.

The research and design activities resulted in the co-design of a refocusing of the Master elective Inclusive Design. Several interventions were implemented in the Inclusive Design elective to break down barriers to Inclusive Design (activities) by creating a safe learning environment for students, including an introductory session to build a connection within the design team and a shift in focus from the result to the design process. Additionally, I designed a workbook for students that bundles and serves as a tool to lower the barrier. The workbook provides reflective exercises for students to process information throughout an Inclusive Design project iteratively.

Barriers to Inclusive Design



Lowering the barrier to Inclusive Design



Dana de Jong
Breaking down barriers to Inclusive Design
30-06-2023
Design for Interaction

Committee Stella Boess
Stefan Persaud
Timon van Hasselt
Company Inclusive Design Lab

