

DRAWINGSET

COMPLEX PROJECTS

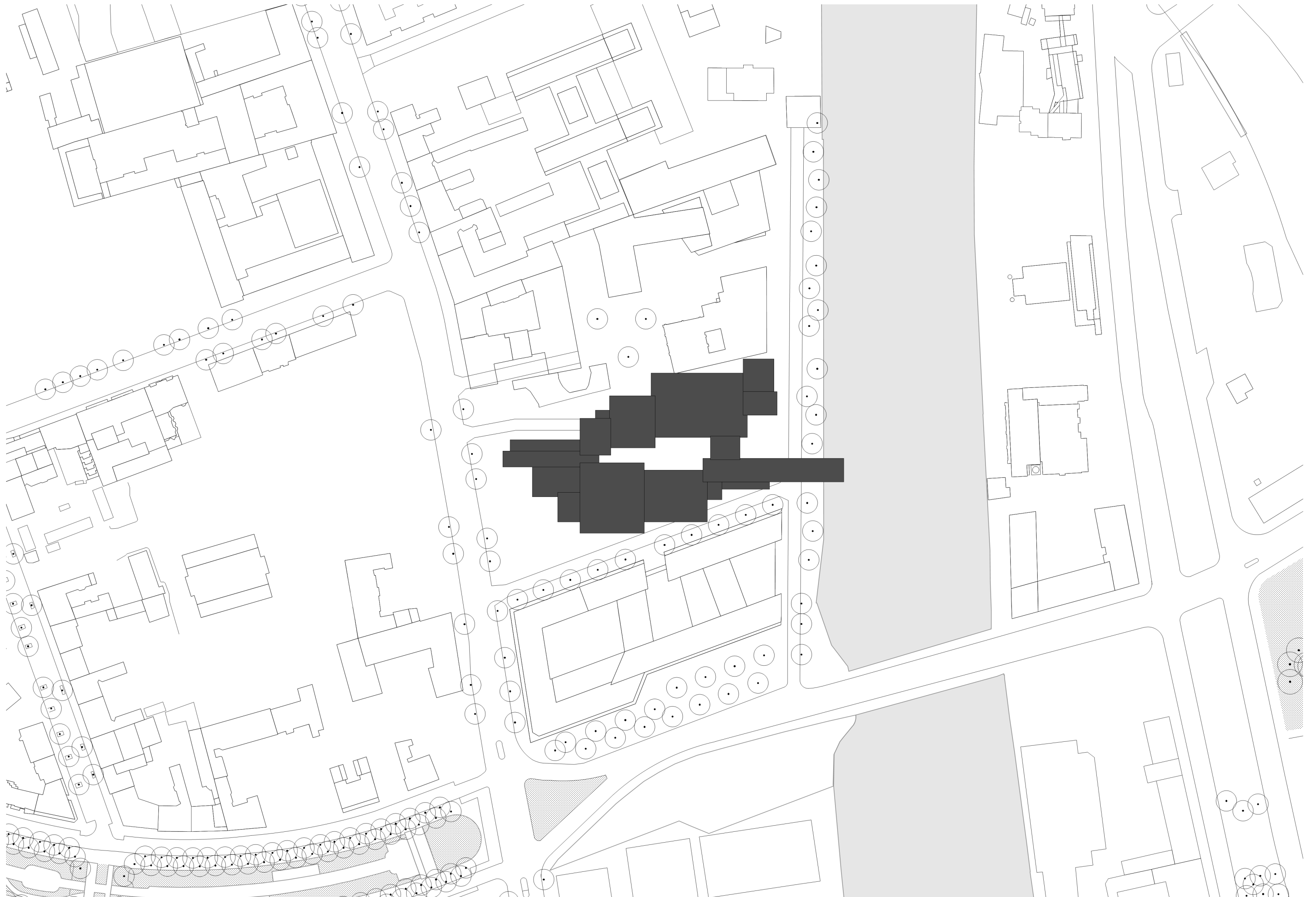
FLORIS BOERMA

GROUP



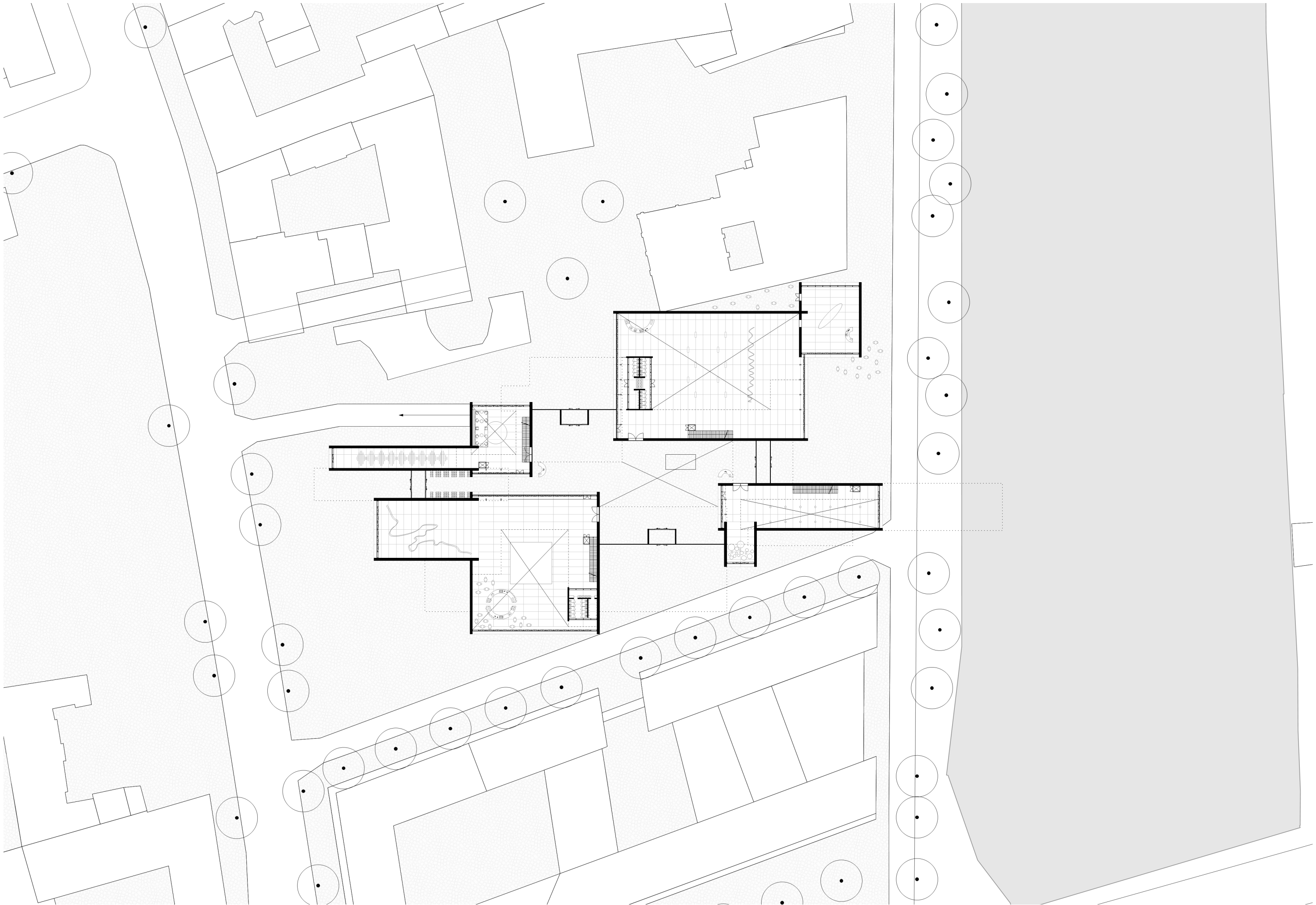
Drawingset | 1:10000

SITE



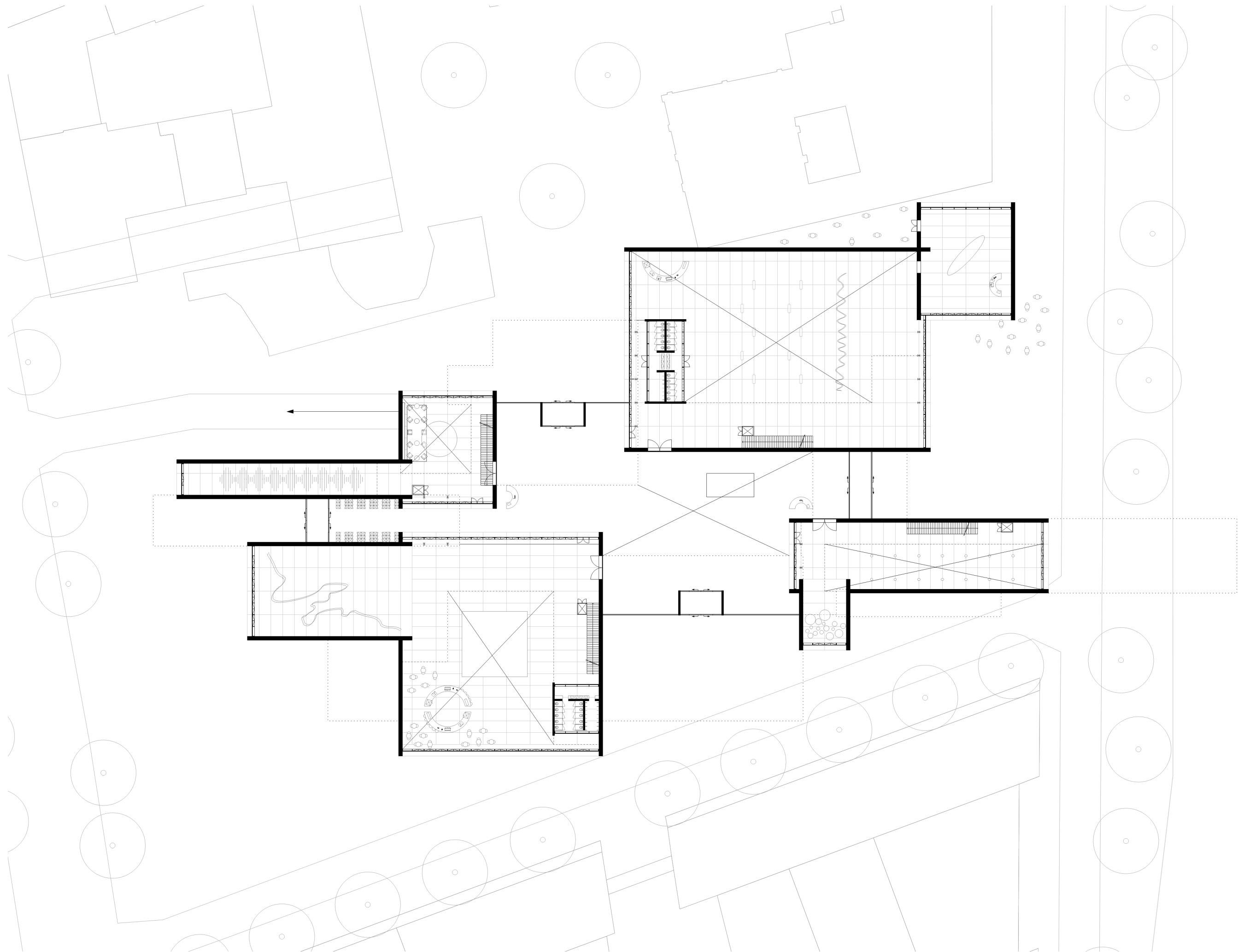
Drawingset | 1:1000

URBAN



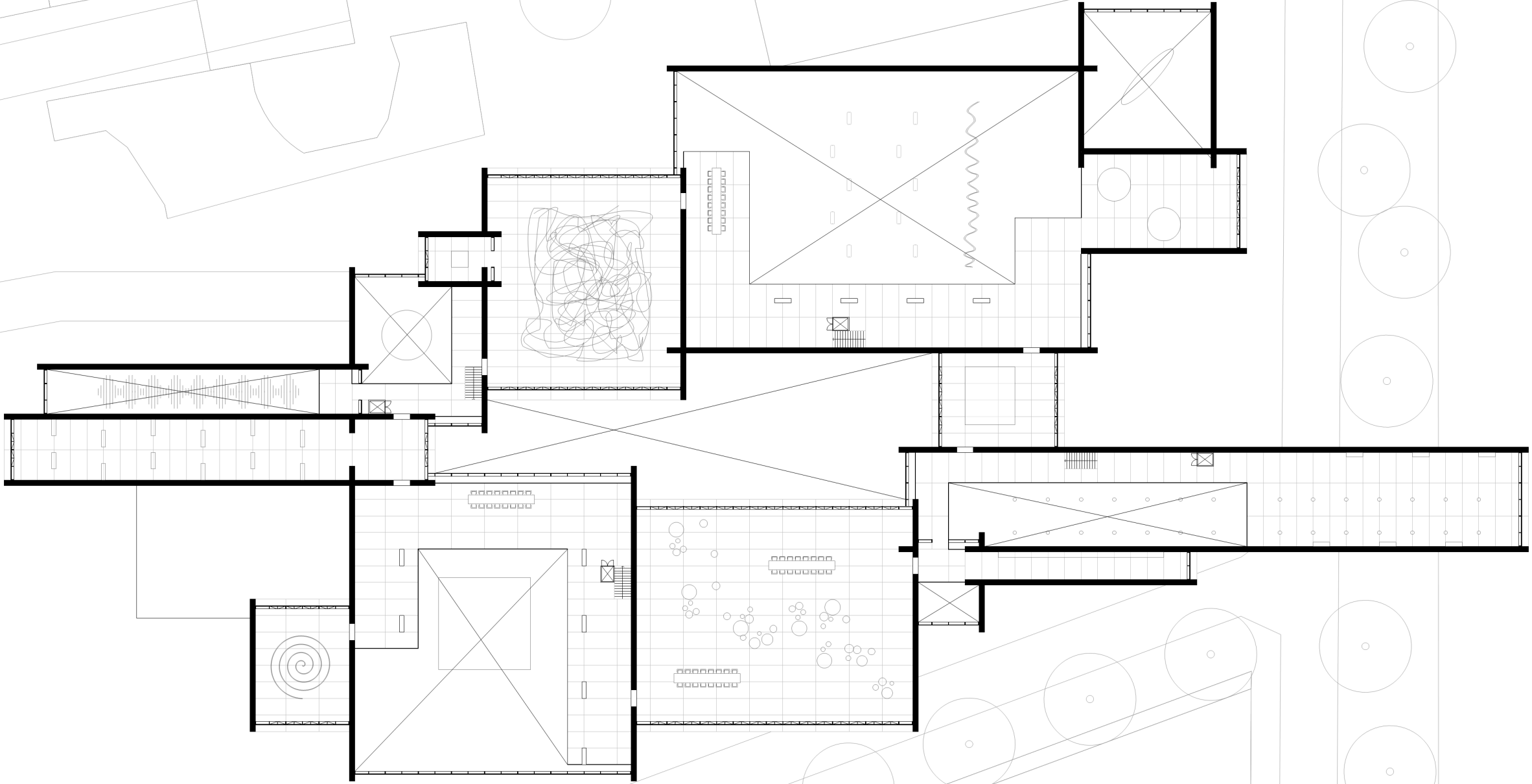
Drawingset | 1:500

GROUND FLOOR

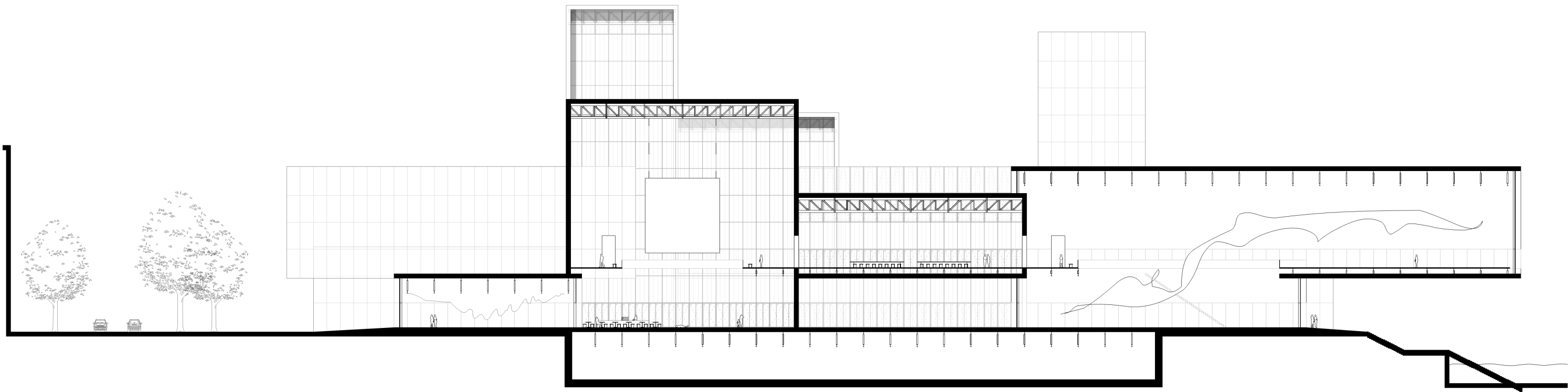


Drawingset | 1:200

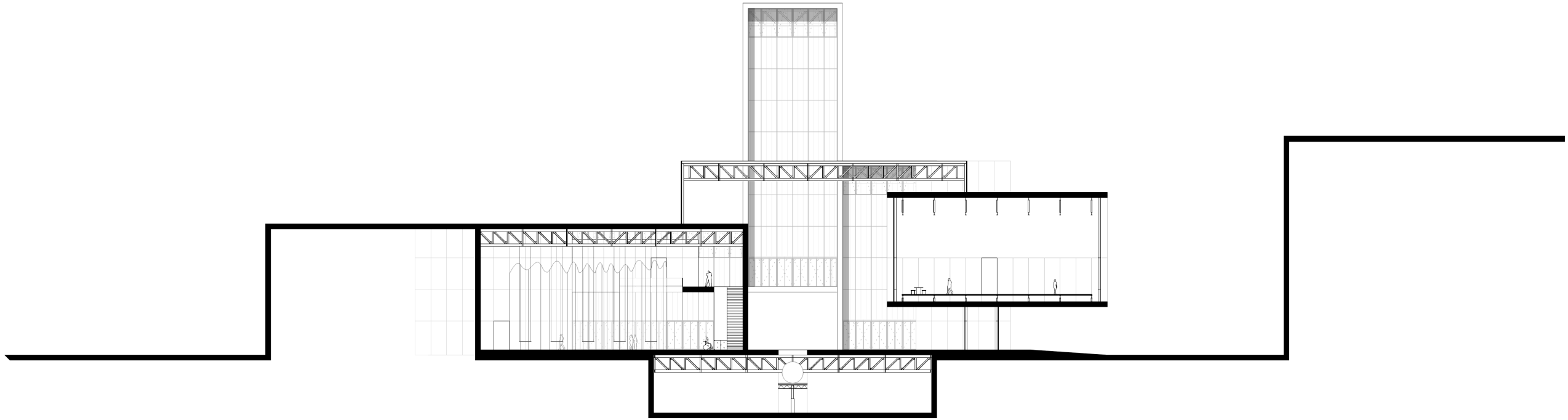
FIRST FLOOR



SECTION AA



SECTION BB



FRAGMENT A

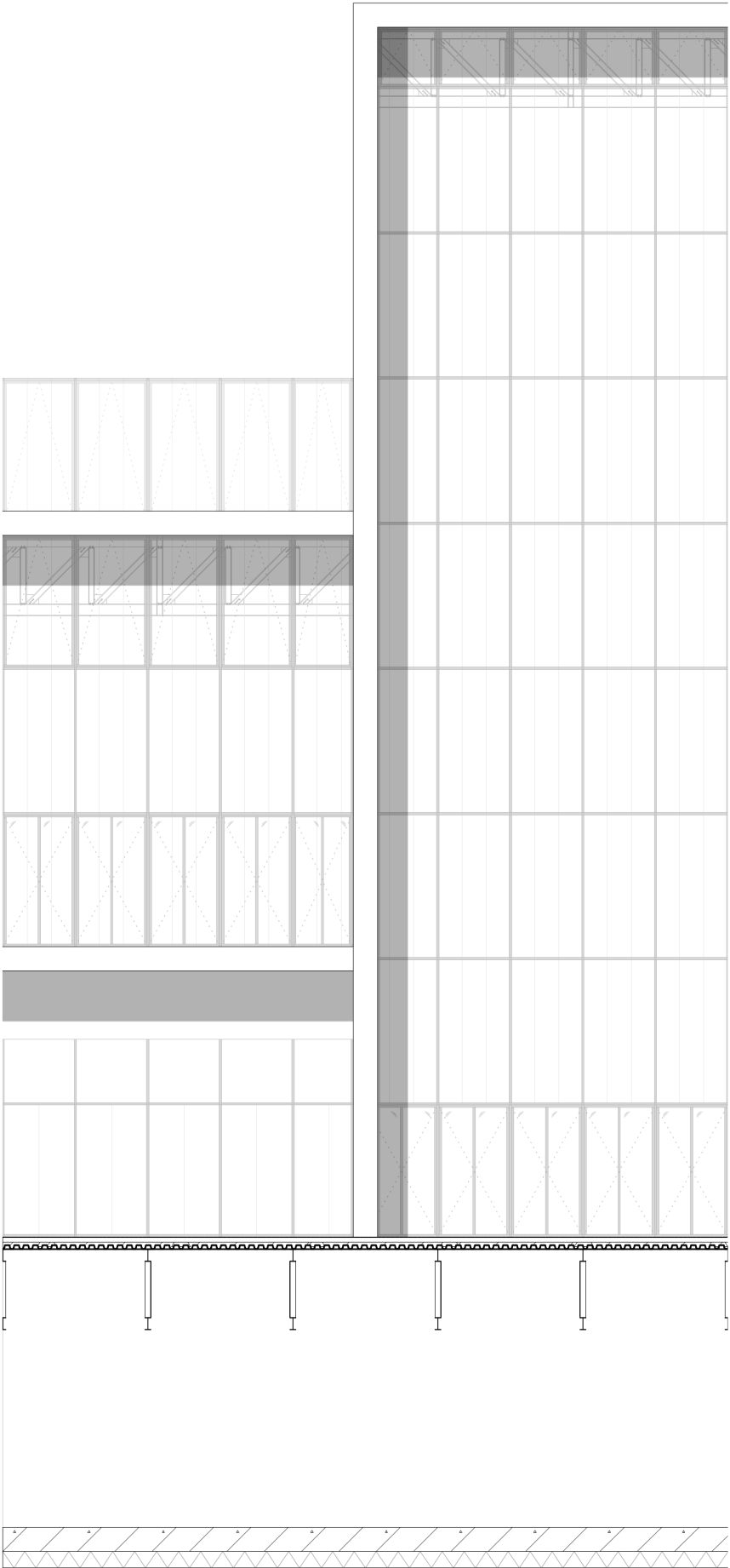
p+ 21800 ▼

p+ 18600 ▼

p+ 7500 ▼

p+ 600 ▼

p- 6600 ▼

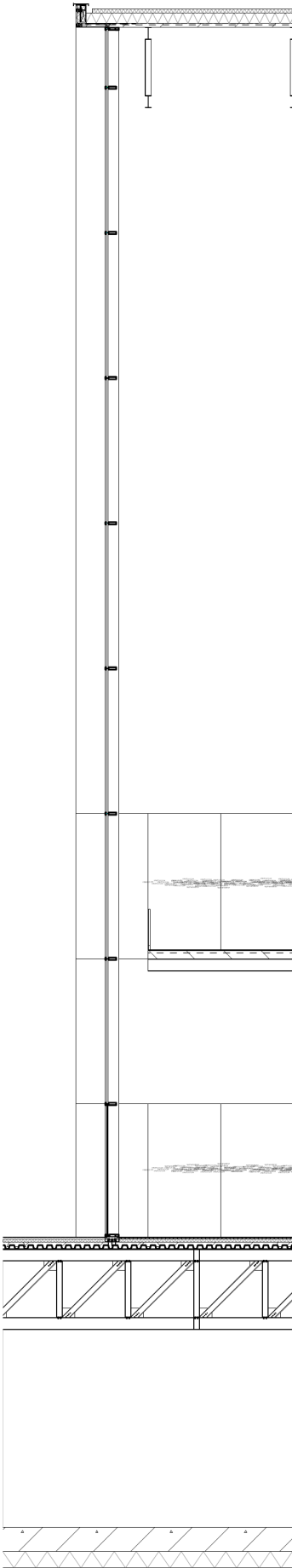


▼ p+ 31200

▼ p+ 7500

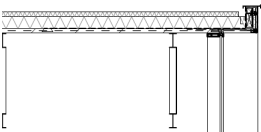
▼ p+ 600

▼ p- 6600

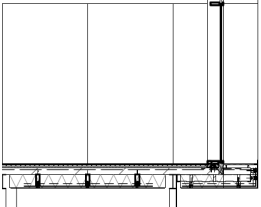


FRAGMENT B

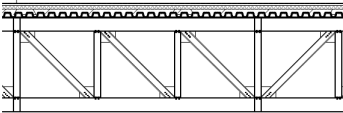
p+ 29400 ▼



p+ 7500 ▼



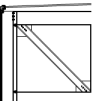
p+ 600 ▼



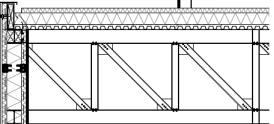
p- 6600 ▼



▼ p+ 21800



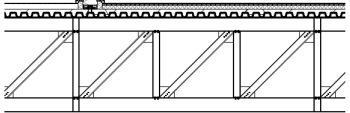
▼ p+ 15000



▼ p+ 7500



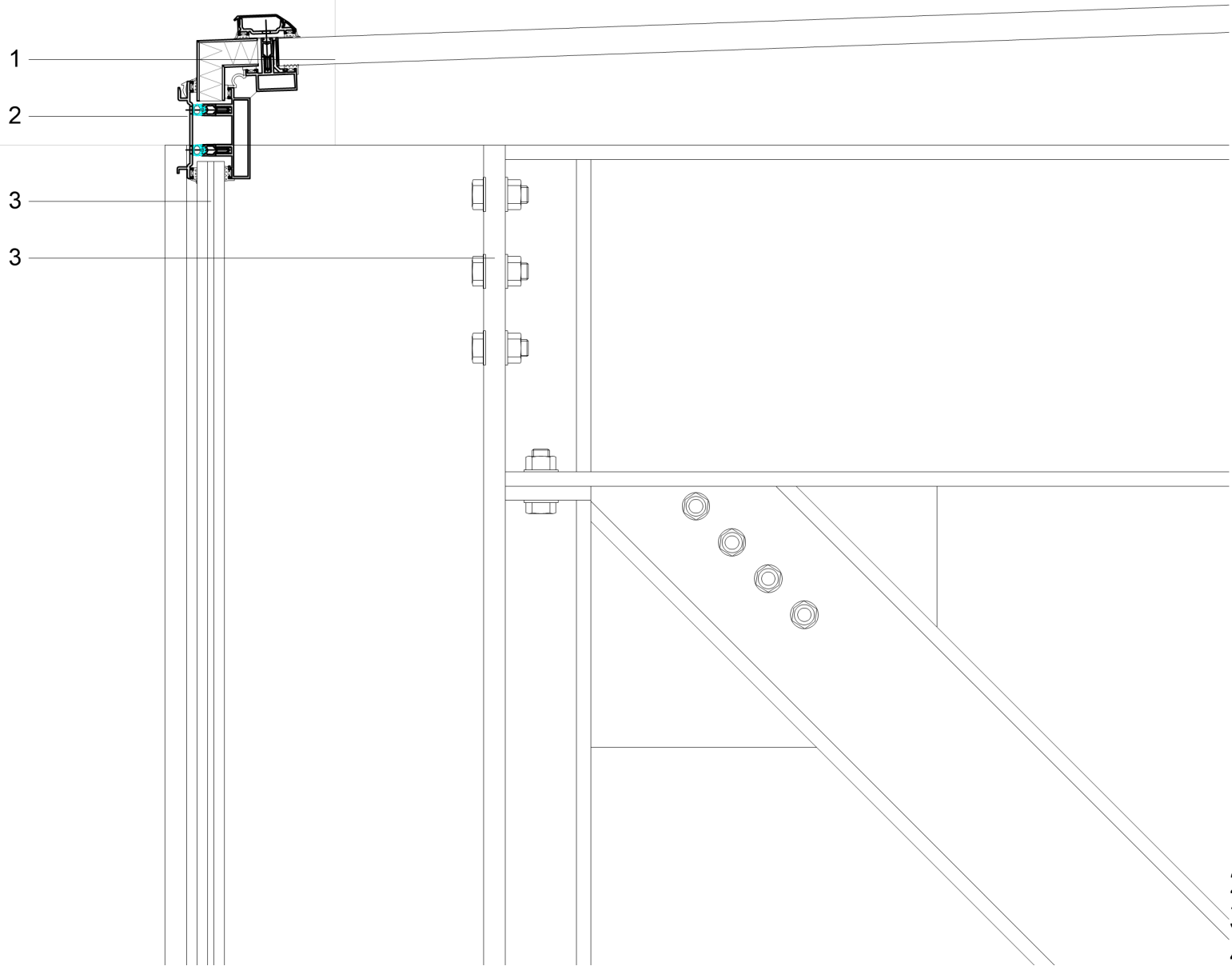
▼ p+ 600



▼ p- 6600



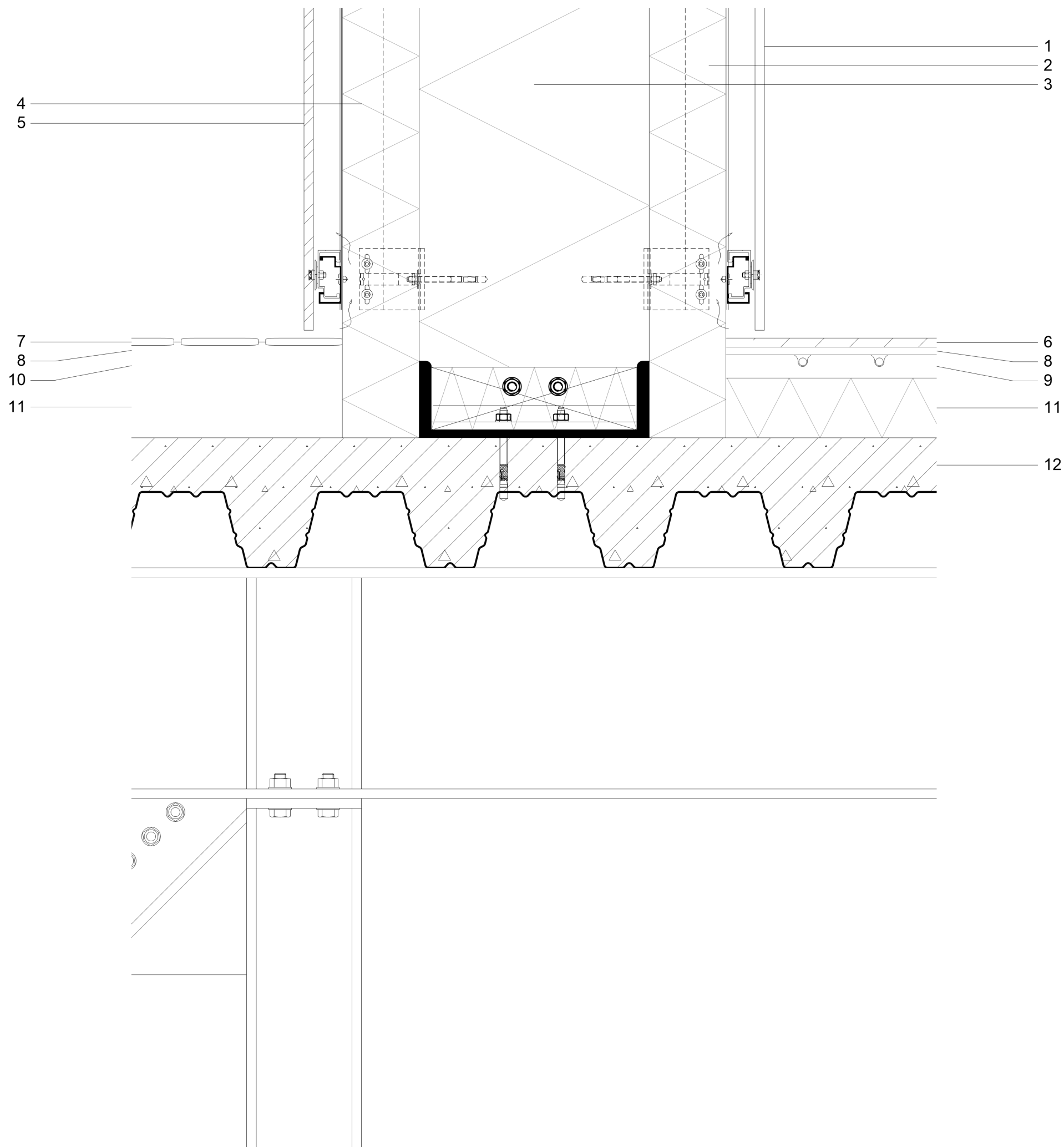
ROOF DETAIL



- 1 - 60mm Polycarbonate panels Rodeca
- 2 - Reynears aluminium roof profiles
- 3 - HR++ Glass
- 4 - Steel concstruction HEA 220

Drawingset | 1:100

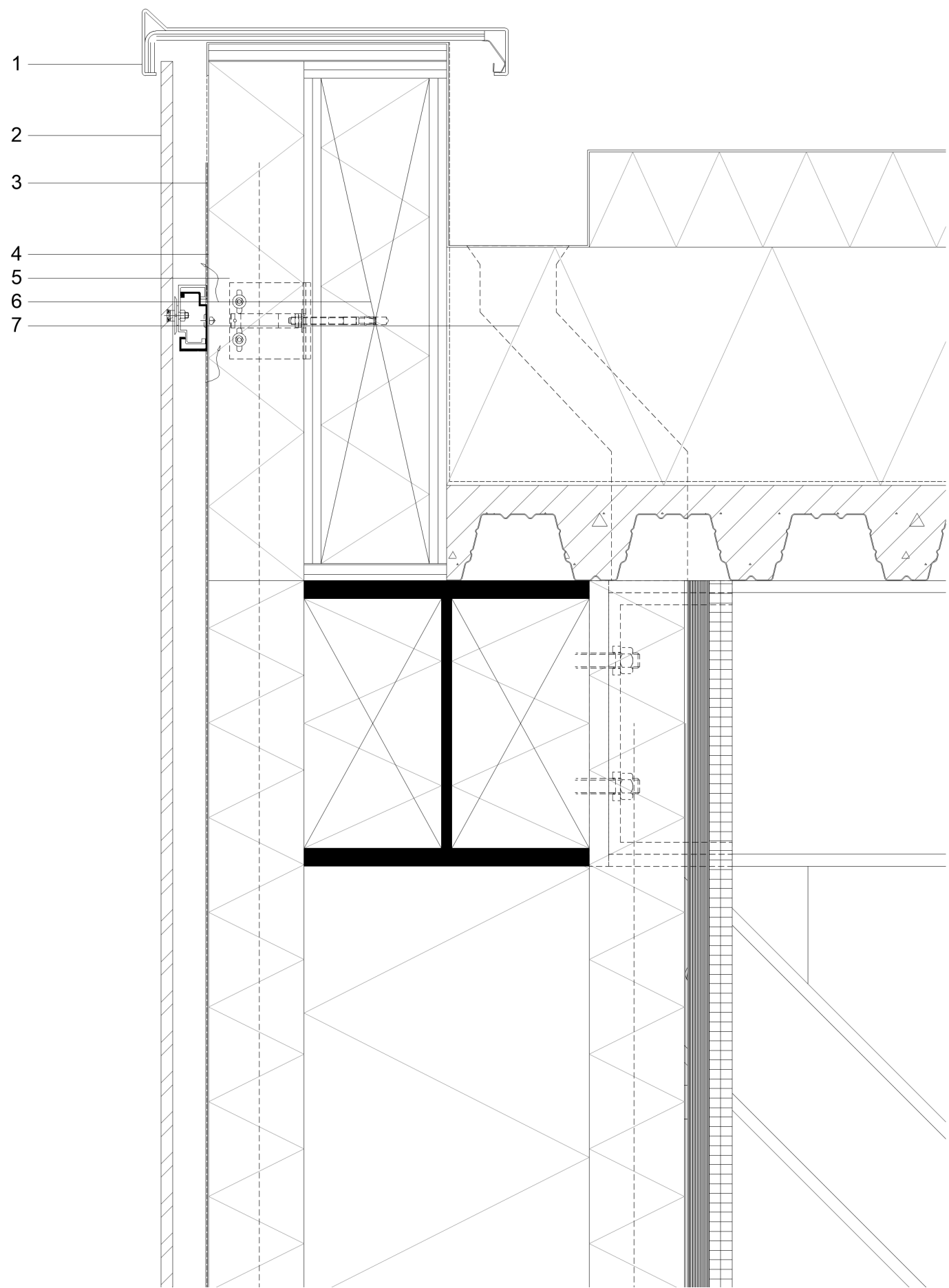
CLOSED FACADE DETAIL



- 1 - 12 mm concrete fiber panels 1800x3600mm
- 2 - Ventilated aluminium support structure
- 3 - Rockwool insulation 300mm + 2x100mm
- 4 - Ventilated aluminium support structure
- 5 - 12 mm concrete fiber panels 1800x3600mm
- 6 - 18 mm concrete fiber panels 1800x3600mm
- 7 - Berlin cobblestones
- 8 - 10mm underlay
- 9 - 30mm underfloor heating
- 10 - Substrate
- 11 - 80mm hard isolation
- 12 - 170mm steel composite floor

Drawingset | 1:5

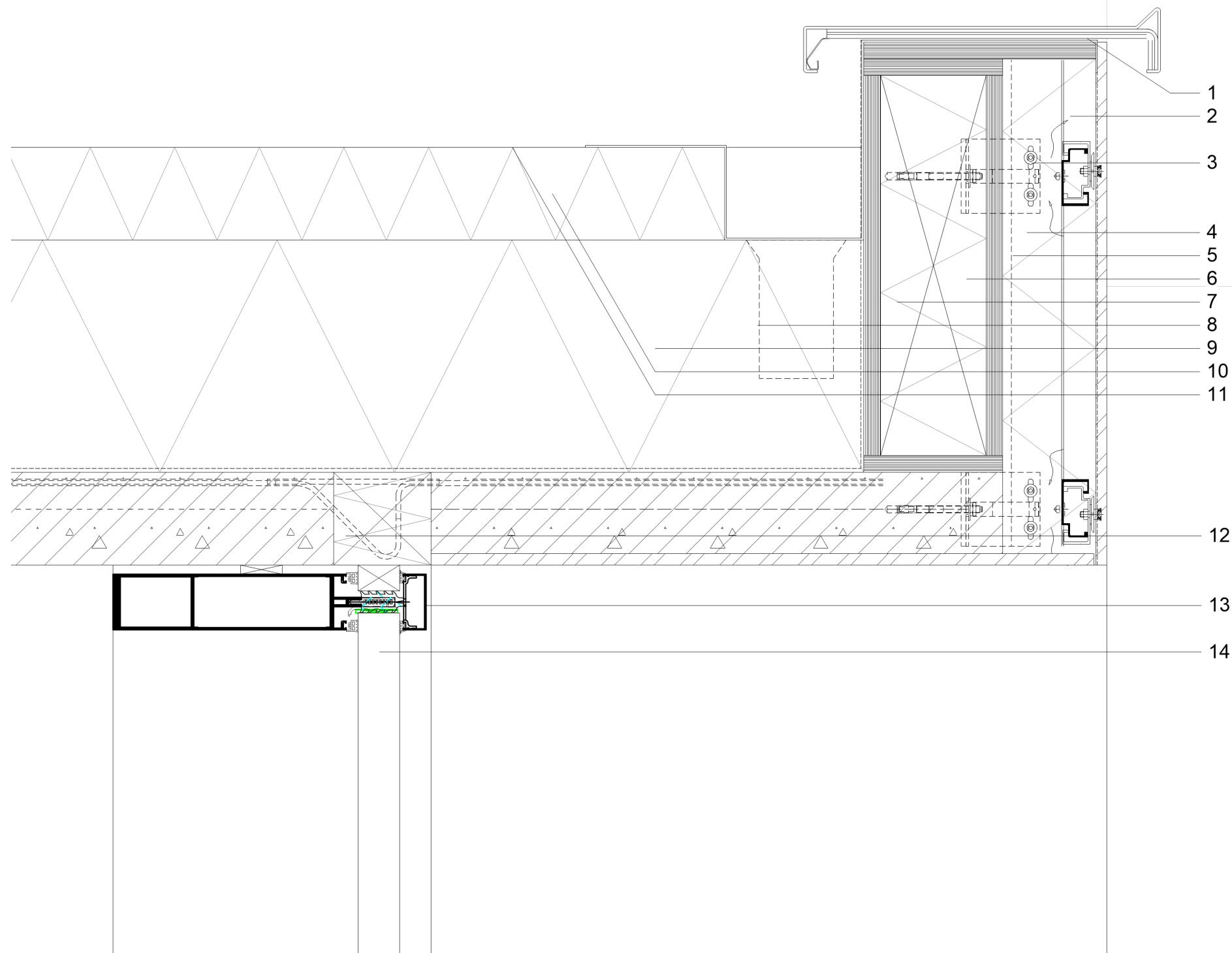
CLOSED FACADE DETAIL



- 1 - Steel trim
- 2 - 12 mm concrete fiber panels 1800x3600mm
- 3 - Waterproof layer
- 4 - Ventilated aluminium support structure
- 5 - Rockwool insulation 100mm
- 6 - Isolated construction 120mm
- 7 - Water drainage

Drawingset | 1:5

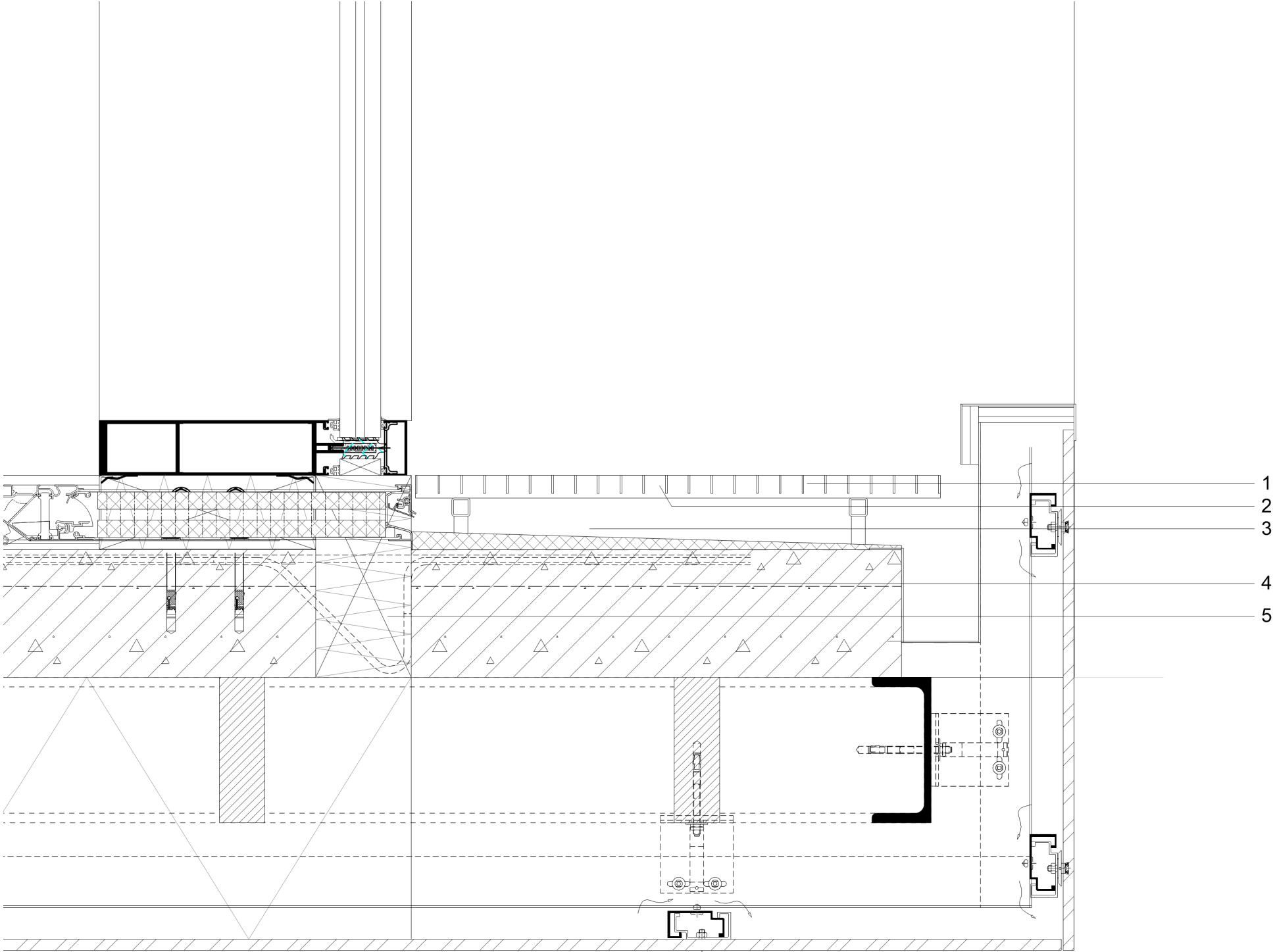
OPEN FACADE DETAIL



- 1 - Steel trim
- 2 - 12 mm concrete fiber panels 1800x3600mm
- 3 - Vertical construction element
- 4 - Ventilated aluminium support structure
- 5 - Waterproof layer
- 6 - 100mm Rockwool isolation
- 7 - Isolated construction 120mm
- 8 - Water drainage
- 9 - 300mm hard isolation
- 10 - 100mm hard isolation (sloped 2%)
- 11 - Bitumen
- 12 - Steel construction element
- 13 - Reynears aluminium profile 60mm
- 14 - 60mm Rodeca polycarbonate panels

Drawingset | 1:5

OPEN FACADE DETAIL



- 1 - Corrugated steel floor
- 2 - Support construction
- 3 - 50 mm hard isolation (sloped 2%)
- 4 - 170mm steel composite floor
- 5 - Steel construction element