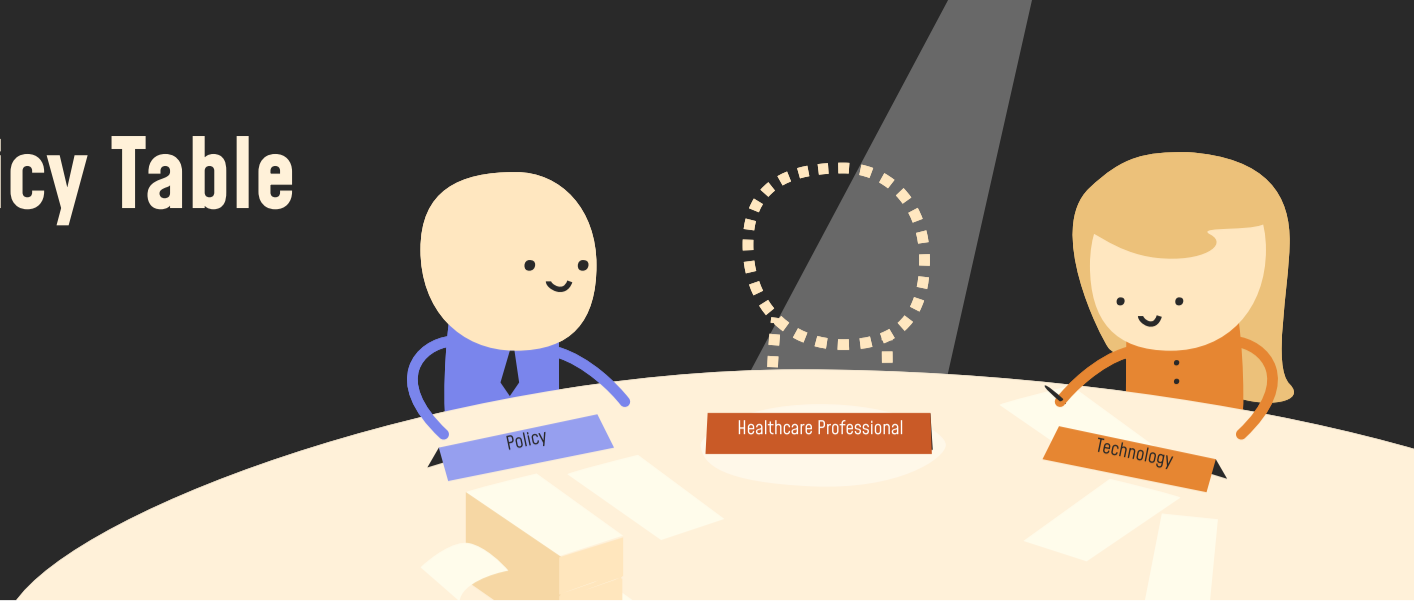


Bringing Healthcare Professionals to the Policy Table

Engaging Healthcare Professionals in Creating Data Exchange Systems to Support Meaningful Use

Peter van Oost



motivation The Dutch healthcare system is under pressure. Standardizing digital data exchange is one of the strategies to improve quality and reduce costs. The BgZ will be the first standardized exchange implemented.

stakeholders The Ministry of Health, Welfare, and Sport (VWS), healthcare institutions, Nictiz, and other stakeholders are collaborating to facilitate this standardization. However, they are struggling to deliver a truly usable system. Why is this?

leverage My leverage analysis indicates that balancing power is the most crucial way to guide the system. Balancing **power** is inherent in almost all relationships, as different interests vie for influence on decisions and priorities.

meaningful use The most critical relationship where power needs to be balanced is that between the healthcare professional and their software supplier. System actors with power apply it to prioritize technical and societal developments. Healthcare professionals need to be empowered to push the system to create software solutions that provide *meaningful use* in healthcare context.

Future Vision

A future where the **power** of healthcare professionals is enshrined in system **values, processes and actions** so their healthcare process can be shaped by not only technical or societal relevance, but also their **experience, knowledge and needs**

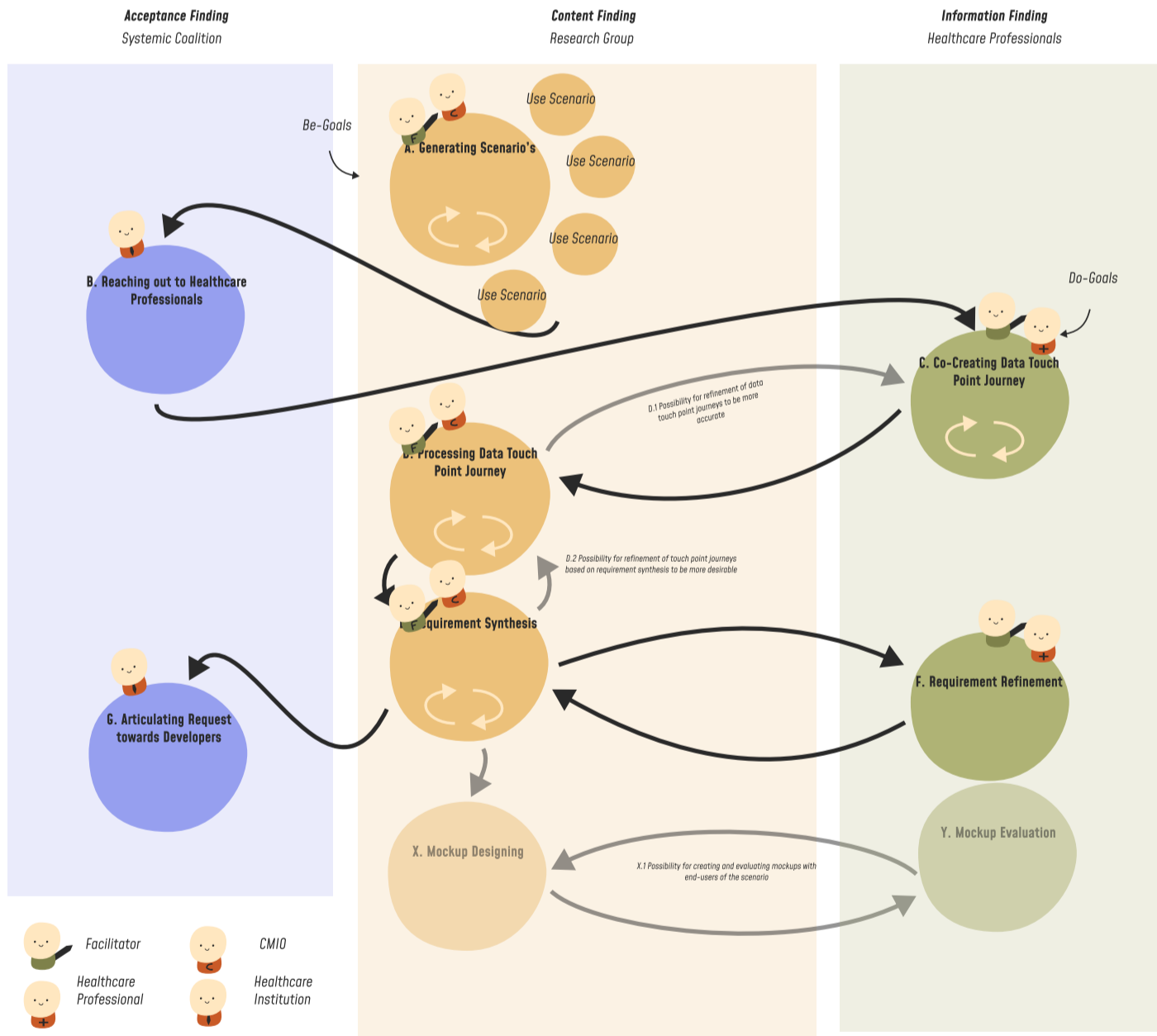
Roles of Power

The stakeholders in this system have 5 key aspects of how power can be used to influence decisions, actions and priorities. Healthcare professionals especially lack autonomy, opportunity and recognition.



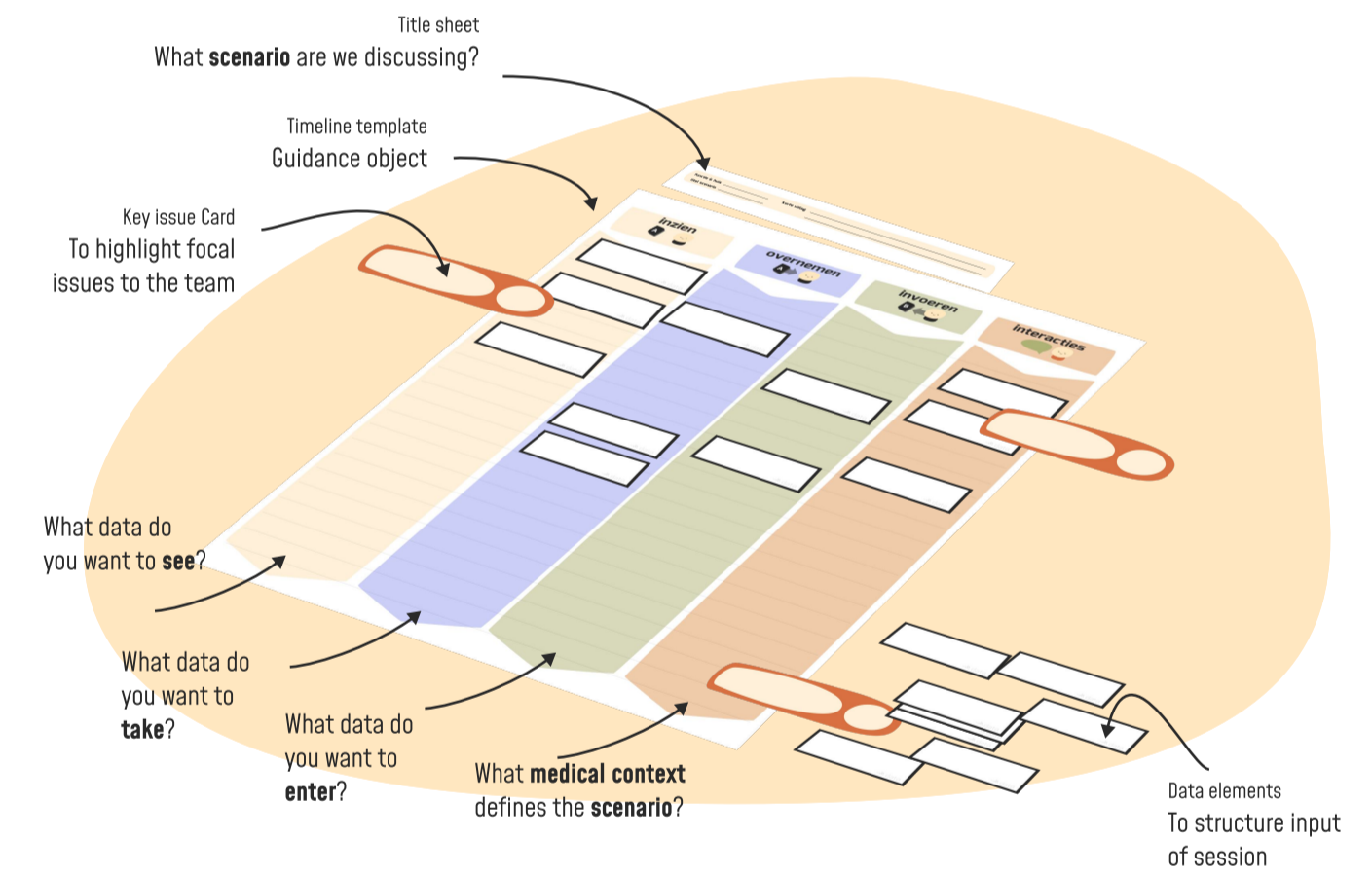
Process Design

My process design enables healthcare professionals and stakeholders to map out different healthcare processes based on an explicit data touch point journey. This provides **relevant** information for software developers about where data should be collected, entered, or transferred within the process. The data touch point journey framework ensures that requirements are always made **explicit**.



Interaction Design

My interaction design ensures that these data touch point journeys are also **representative**. The template allows healthcare providers to map out the healthcare process in an accessible manner.



Roadmap

I present a step-by-step plan to facilitate the power of healthcare providers at the interaction, process, and systemic levels. Only by doing this can we ensure that frontline healthcare workers can effectively fulfill our national healthcare mission.

