

Engineering atomic-level complexity in high-entropy and complex concentrated alloys

Oh, Hyun Seok; Sang Jun, Kim; Odbadrakh, Khorgolkhuu; Ryu, Wook Ha; Yoon, Kook Noh; Mu, Sai; Körmann, Fritz; Ikeda, Yuji; Tasan, Cemal Cem; Raabe, Dierk

DOI

[10.1038/s41467-019-10012-7](https://doi.org/10.1038/s41467-019-10012-7)

Publication date

2019

Document Version

Final published version

Published in

Nature Communications

Citation (APA)

Oh, H. S., Sang Jun, K., Odbadrakh, K., Ryu, W. H., Yoon, K. N., Mu, S., Körmann, F., Ikeda, Y., Tasan, C. C., Raabe, D., Egami, T., & Park, E. S. (2019). Engineering atomic-level complexity in high-entropy and complex concentrated alloys. *Nature Communications*, *10*(1), Article 2090. <https://doi.org/10.1038/s41467-019-10012-7>

Important note

To cite this publication, please use the final published version (if applicable). Please check the document version above.

Copyright

Other than for strictly personal use, it is not permitted to download, forward or distribute the text or part of it, without the consent of the author(s) and/or copyright holder(s), unless the work is under an open content license such as Creative Commons.

Takedown policy







Please contact us and provide details if you believe this document breaches copyrights. We will remove access to the work immediately and investigate your claim.

ARTICLE

<https://doi.org/10.1038/s41467-019-10012-7>

OPEN

Engineering atomic-level complexity in high-entropy and complex concentrated alloys

Hyun Seok Oh¹, Sang Jun Kim ¹, Khorgolkhuu Odbadrakh^{2,3}, Wook Ha Ryu¹, Kook Noh Yoon ¹, Sai Mu⁴, Fritz Körmann^{5,6}, Yuji Ikeda ⁵, Cemal Cem Tasan ⁷, Dierk Raabe⁵, Takeshi Egami ^{4,8} & Eun Soo Park ¹

Quantitative and well-targeted design of modern alloys is extremely challenging due to their immense compositional space. When considering only 50 elements for compositional blending the number of possible alloys is practically infinite, as is the associated unexplored property realm. In this paper, we present a simple property-targeted quantitative design approach for atomic-level complexity in complex concentrated and high-entropy alloys, based on quantum-mechanically derived atomic-level pressure approximation. It allows identification of the best suited element mix for high solid-solution strengthening using the simple electronegativity difference among the constituent elements. This approach can be used for designing alloys with customized properties, such as a simple binary NiV solid solution whose yield strength exceeds that of the Cantor high-entropy alloy by nearly a factor of two. This study provides general design rules that enable effective utilization of atomic level information to reduce the immense degrees of freedom in compositional space without sacrificing physics-related plausibility.

¹Department of Materials Science and Engineering, Seoul National University, 1 Gwanak-ro, Gwanak-gu, 08826 Seoul, Republic of Korea. ²Joint Institute for Computational Sciences, University of Tennessee and Oak Ridge National Laboratory, Oak Ridge, TN 37996, USA. ³National University of Mongolia, Ulaanbaatar 14201, Mongolia. ⁴Oak Ridge National Laboratory, Oak Ridge, TN 37831, USA. ⁵Max-Planck-Institut für Eisenforschung, Max-Planck-Straße 1, 40237 Düsseldorf, Germany. ⁶Materials Science and Engineering, Delft University of Technology, 2628 CD Delft, Netherlands. ⁷Department of Materials Science and Engineering, Massachusetts Institute of Technology, 77 Massachusetts Avenue, Cambridge, MA 02139, USA. ⁸Department of Materials Science and Engineering and Department of Physics and Astronomy, University of Tennessee, Knoxville, TN 37996, USA. Correspondence and requests for materials should be addressed to D.R. (email: d.raabe@mpie.de) or to T.E. (email: egami@utk.edu) or to E.S.P. (email: espark@snu.ac.kr)

For millennia metallurgists have explored mixtures of metallic and non-metallic elements, so-called “alloys”, to produce materials with improved properties. Over the last century, the compositional complexity of alloys has dramatically increased in response to accelerating demands for component safety, efficiency, and resistance to harsh environments (Fig. 1a). Typical examples range from advanced automotive steels to the recently proposed complex concentrated alloys (CCAs) with multi-principal elements at high concentrations^{1–3}. The immense composition space compels the design of a practically infinite number of alloys, causing the property-targeted design of high-performance alloys to be extremely challenging. However, the local atomic environments in such alloys are chemically complex, and hence, not amenable to well established methods such as mean-field averaging. The advantage of many degrees of freedom is severely hindered by a lack of quantitative mixing rules, rendering alloy design an empirical trial-and-error undertaking.

In this paper, we present a simple property-targeted quantitative design approach for CCAs based on quantum-mechanically derived atomic-level pressure approximation. This approach is inspired by the effective description of the complex atomic nature of amorphous alloys using atomic-level pressure, which links the elemental information and the local atomic structure to various macroscopic properties such as glass transition and mechanical failure⁴. We show that the dominant factor for solid-solution strengthening in single phase face-centered cubic (fcc) CCAs consisting of 3d transition metal elements (V, Cr, Mn, Fe, Co, and Ni) (3d CCAs) is the variation in the atomic-level pressures originating from the charge transfer between neighboring elements. The material class includes large sub-groups of important commercial alloys such as austenitic steels^{5,6}, Ni-based superalloys⁷, and the recently proposed high-entropy alloys (HEAs)^{8–11}. We then numerically identify the relationship between configurational difference in the charge transfer and the macroscopic difference in the charge transfer among the elements, which enables connecting the atomic-level fluctuation and complexity to the macroscopic property of the material. It allows establishment of a design recipe which uses elemental information (electronegativity) (Fig. 1b) without explicit electronic structure calculations as an efficient vehicle for more systematic and constitutive structure-property design of CCAs.

Results

Atomic-level pressure in complex concentrated alloys. The atomic-level pressure originates from the misfit of an element with its surroundings in terms of its atomic size, electronic state and charge transfer (Supplementary Fig. 1). In conventional dilute alloys, most solutes are surrounded by solvent atoms, with little interaction among solutes (Fig. 1a). Thus, previous approaches for treating the bonding and misfit in dilute alloys assume a fixed atomic-level pressure for a solute element^{12,13}. On the other hand, the local atomic environment in CCAs is chemically complex (Fig. 1a)^{14,15}; thus the atomic-level pressure fluctuates depending on the specific local environment. We therefore apply the quantum-mechanically derived atomic-level pressure approach. This approach allows calculation of the local electronic energy for finite deformations using the density-functional theory (DFT) technique and calculation of the local stress of an individual atom from numerical derivatives of this energy. This approximation was introduced previously^{16,17}, where it was calculated using the locally self-consistent multiple scattering (LSMS) method^{18,19}. Details of the method are described in the Methods subsection “First-principles calculations of atomic-level pressure”.

Figure 2a, b present introductory examples of the DFT calculated atomic-level pressure values for each element in the FeNi CCA (Fig. 2a) and the Cantor HEA (equiatomic fcc CrMnFeCoNi) (Fig. 2b) plotted against the local atomic volume. The volume is defined as the Voronoi-cell volume associated with each atom. Other equiatomic 3d CCAs from the binary CoNi to the quaternary CrFeCoNi are displayed in Supplementary Fig. 2. The model contains 256 atoms in a supercell, and the atoms are randomly mixed without chemical short-range order. Although the net atomic-level pressure, i.e., the sum of all atomic-level pressures, is zero, the individual atoms experience non-zero atomic-level pressure values. Hence, all atoms in CCAs can act as dilatational or compressive sources which interact with defects.

Solid-solution strengthening versus atomic-level pressure. Solid-solution strengthening is driven by fluctuations in the solute-dislocation interaction energy^{20–24}. This energy is caused by the atomic-level pressure through the interaction with the elastic field of a dislocation. As all atoms in the considered 3d

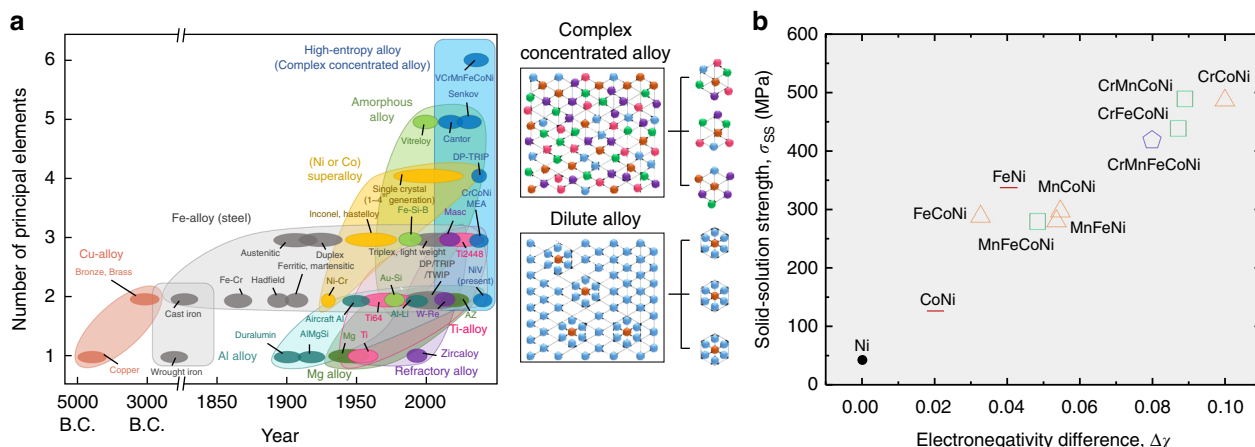
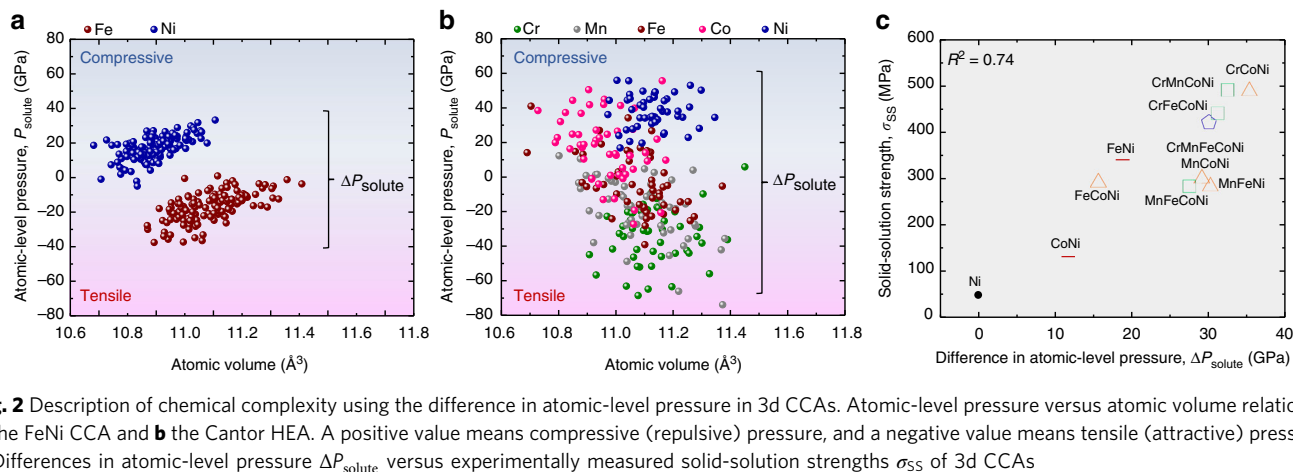


Fig. 1 Proportional relationship between electronegativity difference and solid-solution strength in complex concentrated and high-entropy alloys. **a** A historical sketch showing an upward trend in the number of principal elements (≥ 5 at.%) constituting general alloy systems over the past centuries. It includes Cu-, Fe-, Al-, Mg-, Ti-, and refractory alloys as well as superalloys (Ni-based or Co-based), amorphous and high-entropy alloys. **b** Electronegativity differences among the constituting elements $\Delta\chi$ versus experimentally measured solid-solution strengths σ_{SS} of 3d CCAs²⁵ for solid-solution strengthening relation. The experimentally measured solid-solution strengths are listed in Supplementary Table 1



CCAs have different pressures, the fluctuation in the interaction energy and the resultant solid-solution strength σ_{SS} originate from the configurational fluctuation of the atomic-level pressure^{23,24}. If misfit volume in the previous solid-solution strengthening theory of CCAs^{23,24} is replaced by atomic-level pressure P_{solute} , we obtain the following:

$$\sigma_{\text{SS}} \propto \left(\frac{\Gamma}{b^2}\right)^{-1/3} (\Delta P_{\text{solute}})^{4/3}, \quad (1)$$

where Γ is the line tension, b is the Burger's vector, and ΔP_{solute} denotes the ensemble standard deviation of P_{solute} . In the present 3d CCAs, differences in the moduli ($\sim 11\%$) and the Burger's vectors ($\sim 1\%$) between the alloys²⁵ are negligible compared to the difference in the ΔP_{solute} values ($\sim 44\%$). We thus reduce Eq. (1) to $\sigma_{\text{SS}} \propto \Delta P_{\text{solute}}$ for the sake of simplicity of the parameterization.

Because the Hall-Petch effect is typically invariant with temperature and the Peierls friction stress is very small in fcc materials and is only weakly temperature-dependent, σ_{SS} essentially carries the temperature-dependent portion of the yield strength^{23,25}. In Fig. 2c, the ΔP_{solute} values of 3d CCAs are plotted against the reported temperature-dependent part of the yield strength at 0 K, i.e., solid-solution strength data σ_{SS} ²⁵. The proportional relationship clearly reveals that solid-solution strengthening in these alloys indeed originates from the configurational fluctuation of the atomic-level pressure.

Atomic-level pressure versus charge transfer. We now discuss the origin of the atomic-level pressure in 3d CCAs. From the viewpoint of elasticity, the atomic volume for each element is directly linked to its misfit volume and atomic-level pressure^{20–22}; large elements should have positive/repulsive pressure and vice versa. Instead, the overall tendency of the present element-averaged atomic-level pressure in Fig. 2a, b does not show any apparent correlation with the atomic volume. Furthermore, the order of atomic-level pressure of each element (Cr < Mn < Fe < Co < Ni) is opposite to the order of atomic sizes of the same elements in pure state (Cr > Mn > Fe > Co > Ni) (Fig. 2b, Supplementary Table 2). On the other hand, Fig. 3a shows a proportional relationship between charge transfer dQ that the solute atom experiences and atomic-level pressure in 3d CCAs. This result is a clear indication that the atomic-level pressure (and hence, the misfit volume) of 3d CCAs is driven by the charge transfer, not by the atomic size difference¹⁷. Thus the relationship between the atomic-level pressure and the charge transfer can be quantified as $P_{\text{solute}} \propto dQ$.

The main reason why the charge transfer is the dominant factor for the atomic-level pressure in the 3d CCAs is that the differences

in the atomic sizes among the elements considered here are relatively small. Figure 3b presents the average values of the final atomic radii $R_{\text{f,solute}}$ measured by extended X-ray absorption fine structure (EXAFS) and the pure atomic radii (Goldschmidt²⁶, Pauling²⁷) of the constituent elements in the 3d CCAs. We compare these values with the zero pressure atomic radius (Fig. 3c), an imaginary atomic size, before generating atomic-level

pressure $R_{\text{zeroP, solute}} = R_{\text{f,solute}} \cdot \left(1 + P_{\text{solute}}/B_{\text{solute,cluster}}\right)^{1/3}$, where $B_{\text{solute,cluster}}$ is the bulk modulus of a cluster of atoms including the solute; see Supplementary Note 1. The differences among the zero pressure atomic radii are almost one to two orders of magnitude larger than the differences among the pure atomic radii and the differences among the average final atomic radii. This implies significant additional effects on the atomic-level pressure, with the main cause being the charge transfer.

There may be additional reasons for the predominant role of the charge transfer in the atomic-level pressure which originates from the complex nature of CCAs. In metallic liquids and glasses, the local structure (the bond length and the coordination number) effectively changes to accommodate the size misfit effect, and the charge transfer predominantly causes the atomic-level pressure^{17,28}. Although CCAs are topologically less complex compared to metallic glasses, fluctuation in local bond lengths¹⁵ and displacements of atoms from their ideal lattice positions¹⁴ may accommodate the size misfit effects. This relaxation via the lattice distortion may be a general property of CCAs and further studies are needed.

Electronegativity difference versus solid-solution strengthening. The significant role of charge transfer in determination of atomic-level pressure demands a departure from the purely mechanical perspective and implies the need of using electronic structure calculations to predict the solid-solution strengthening. The most practical approach to design a new alloy, however, would be a design rule which does not require computationally expensive full-field calculations but instead utilizes specific elemental information that sufficiently represents the underlying atomic information, such as atomic size, electronegativity, and valence electron concentration (VEC)²⁹, or experimentally accessible global average atomic properties³⁰. Following this idea, we propose a pathway to use such elemental information for predicting fluctuations of the atomic-level pressure in CCAs.

Considering the relation between the atomic-level pressure and charge transfer, the relationship in Eq. (1) can be described by the difference in charge transfer as

$$\sigma_{\text{SS}} \propto \Delta(dQ). \quad (2)$$

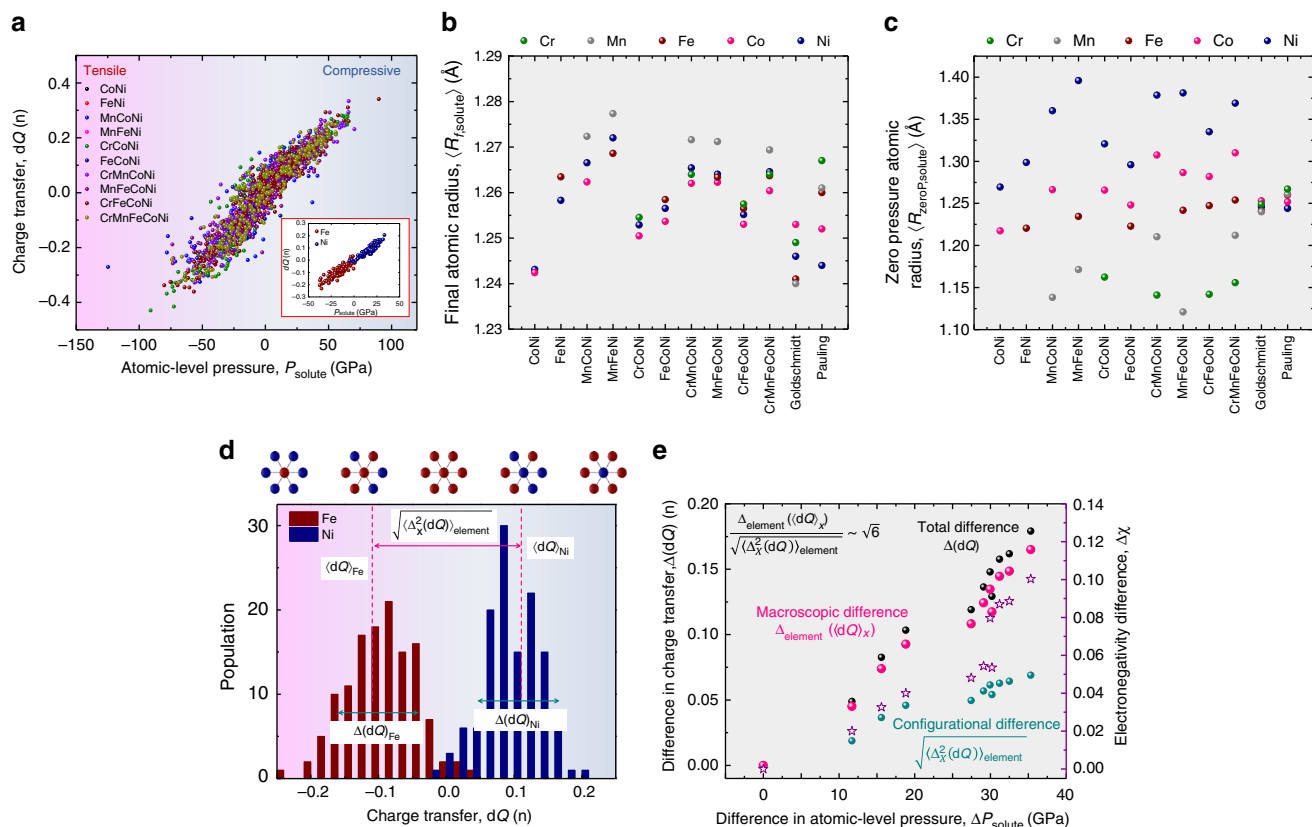


Fig. 3 Relationship among atomic-level pressure difference, charge transfer difference and electronegativity difference in 3d CCAs. **a** Relationship between the atomic-level pressure and the charge transfer (change in the number of electrons per atom; A positive value means gaining electrons) of 3d CCAs; inset: FeNi. **b** Average final atomic radii measured by EXAFS and atomic radii of pure elements (Goldschmidt, Pauling). **c** Average zero pressure atomic radii. **d** Charge transfer distribution in FeNi. **e** Relationship among atomic-level pressure difference, charge transfer difference and electronegativity difference in 3d CCAs. Total difference $\Delta(dQ)$ (black dot), macroscopic difference $\Delta_{\text{element}}(\langle dQ \rangle_X)$ (pink dot), and configurational difference $\sqrt{\langle \Delta_X^2(dQ) \rangle_{\text{element}}}$ (teal dot) in charge transfer, and electronegativity difference (purple star) against the total difference in atomic-level pressure ΔP_{solute} in 3d CCAs

To understand the impact of each chemical element in detail, we decompose $\Delta(dQ)$ as

$$\Delta^2(dQ) = \Delta_{\text{element}}^2(\langle dQ \rangle_X) + \langle \Delta_X^2(dQ) \rangle_{\text{element}}, \quad (3)$$

where $\langle dQ \rangle_X$ is the average of the charge transfers over the atoms of the element X , $\Delta_X^2(dQ)$ is the variance of the charge transfers for the element X , $\langle \dots \rangle_{\text{element}}$ is the weighted average of an element-specific quantity over the element, and $\Delta_{\text{element}}^2(\dots)$ is the weighted variance of element-specific quantity among the constituent elements (see details in Supplementary Note 2). The two terms on the right-hand side reflect two different levels of fluctuations in CCAs. The first term $\Delta_{\text{element}}^2(\langle dQ \rangle_X)$ reflects the macroscopic difference in charge transfer among the elements. The second term $\langle \Delta_X^2(dQ) \rangle_{\text{element}}$ is the configurational difference in charge transfer caused by different local atomic environments averaged over all constituent elements.

Figure 3d shows an application of this approach in terms of the probability distribution of charge transfers in FeNi in the inset of Fig. 3a. $\Delta_{\text{element}}(\langle dQ \rangle_X)$ is 0.093, $\sqrt{\langle \Delta_X^2(dQ) \rangle_{\text{element}}}$ is 0.046, and $\Delta(dQ)$ is 0.104. The ratio between $\Delta_{\text{element}}(\langle dQ \rangle_X)$ and $\sqrt{\langle \Delta_X^2(dQ) \rangle_{\text{element}}}$ is about 2.0. If we assume that the distributions of Fe and Ni have an isosceles triangle shape and are congruent to each other, the ratio between $\Delta_{\text{element}}(\langle dQ \rangle_X)$ and $\sqrt{\langle \Delta_X^2(dQ) \rangle_{\text{element}}}$ becomes $\sqrt{6}$ (~ 2.45). Indeed, the ratios for all

considered 3d CCAs were between 2.02 and 2.41 (Fig. 3e and Supplementary Fig. 3). This implies that the stronger the macroscopic difference in charge transfer is, the greater is the difference (fluctuation) of charge transfer from the variation in local atomic environments. This result makes it possible to predict a configurational fluctuation of charge transfer, and hence the atomic-level pressure, using the average charge transfer of each element dQ_X , which can be simply approximated by the local electronegativity difference $\chi_X - \chi_{\text{element}}$, where χ_X is the electronegativity of element X (Supplementary Table 2), and χ_{element} is the weighted average electronegativity over the element³¹ (Supplementary Fig. 4). Consequently, the solid-solution strengthening effect in 3d CCAs can be rationalized by the electronegativity difference among the constituting elements, $\chi = \sqrt{\sum_X c_X (\chi_X - \langle \chi \rangle_{\text{element}})^2}$, where c_X is the composition, (Fig. 1b) as

$$\sigma_{\text{SS}} \propto \Delta\chi. \quad (4)$$

We use Allen's scale as it reflects Fermi energies of d elements³². Additional discussion to predict σ_{SS} is presented in Supplementary Note 3.

Electronegativity difference versus ideal mixing entropy in 3d CCAs. Until now, we have assumed a random chemical mixture of elements, whereas in reality there may be some chemical short-range order among elements. Although minor, the effects of the

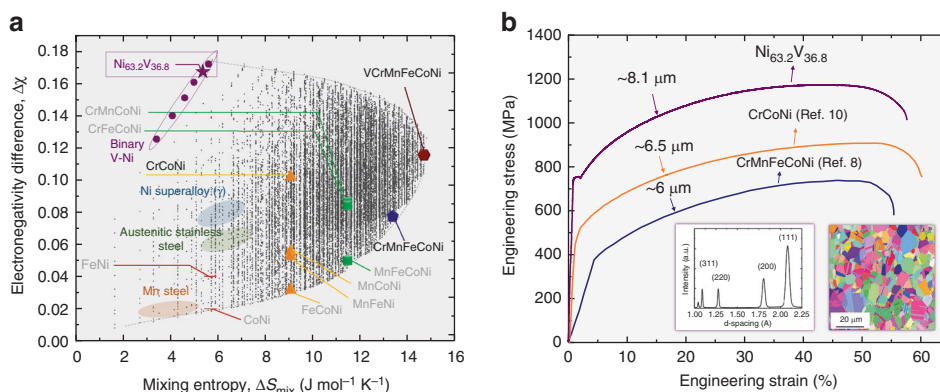


Fig. 4 Customizing solid-solution strength in CCAs via manipulation of electronegativity difference. **a** A complexity map based on the electronegativity difference $\Delta\chi$ and the mixing entropy ΔS_{mix} for the prediction of solid-solution strengthening. All possible combinations of 3d transition metal elements (V, Cr, Mn, Fe, Co, Ni) with average VEC > 7.5 are included. The positions of the commercial alloy systems such as FeMn steel, FeNiCr steel, and γ matrix of Ni-based superalloy are shown in the diagram. Binary NiV solid-solutions are indicated in purple. **b** Tensile behavior of NiV CCA compared to various single-phase CCAs. The tensile stress-strain curves of single-phase equiatomic CrMnFeCoNi⁸ and CrCoNi¹⁰ are also shown here. The inset shows that NiV CCA has single fcc phase (high energy X-ray diffraction pattern) with the average grain size of 8.1 μm (Inverse pole figure map)

short-range order on the yield strength would also be proportional to $\Delta\chi$, as (1) the short-range ordering may be favored in alloys with high $\Delta\chi$ due to the large electronic interaction between elements, and (2) its strengthening effect is caused by the resistance to randomization of atomic configurations (breaking short-range orders), which occurs during dislocation gliding^{33,34}.

Figure 4a shows a diagram of the relationship between $\Delta\chi$ and the ideal mixing entropy ΔS_{mix} ($= -R \sum_X c_X \ln c_X$, where c_X is the composition of element X and R is the gas constant) for chemical complexity of 3d CCAs. We calculated $\Delta\chi$ and ΔS_{mix} with all possible combinations of 3d transition metal elements (V, Cr, Mn, Fe, Co, Ni). The number of combinations is 53130 when the compositional interval is 5 at.%. We added V here due to the observation that the charge transfer is also the main contributor to atomic-level pressure in V-containing CCAs (Supplementary Fig. 5). Among these alloys, we selected alloys with VEC larger than or equal to 7.5 for their high potency of forming fcc solid-solution alloys³⁵, bringing the number of configurations down to 27262. Several important CCA examples are listed in Supplementary Table 3.

There are several interesting points in diagram Fig. 4a. First, in spite of its lower chemical complexity, CrCoNi ($\Delta\chi = 0.100$) has a higher solid-solution strengthening than CrMnFeCoNi ($\Delta\chi = 0.080$). This is consistent with a previous observation that CrCoNi exhibits higher yield strength than CrMnFeCoNi¹¹. Second, FeMn, basis for many commercially used iron-manganese steels, is located at a very low position ($\Delta\chi \approx 0.020$). This implies good potential to develop a 3d CCA with very high strength if we optimize the plasticity mechanisms of CCA with high $\Delta\chi$. Third, mixing entropy, one of the key properties of HEAs (a subclass of CCAs), is not strongly correlated with the electronegativity difference and thus with high solid-solution strengthening per se. Furthermore, there is a region in which the mixing entropy should be decreased to obtain greater solid-solution strengthening effects. Mixing entropy does not include information about the difference among the constituting elements, i.e., differences in local atomic configurations. On the other hand, atomic-level pressure includes the overall information of interatomic potential energies between the central atom and the surrounding environments. Thus, the atomic-level pressure is a relevant parameter to describe the complexity of CCAs, connecting the local atomic information, such as the structure and the chemistry, to the statistical mechanical theories, and thereby to the macroscopic properties.

Property-targeted quantitative design of 3d CCAs. In order to validate the benefits of the approach as summarized in Fig. 4a, we developed a binary NiV solid solution as a test case with the aim of achieving very high solid-solution strengthening, guided by the electronegativity difference. The eutectoid point (Ni: 63.2 at.%, V: 36.8 at.%) is chosen to obtain a single fcc phase solid solution with high stability (Supplementary Fig. 6a). Through casting, homogenization and cold rolling followed by recrystallization annealing (Supplementary Fig. 6b), we obtained a single fcc phase with the average grain size (diameter) of 8.1 μm (the inset in Fig. 4b). Figure 4b shows the representative tensile stress-strain curve of the developed NiV deformed at a strain rate of $1 \times 10^{-3} \text{ s}^{-1}$ at room temperature. To show the substantial improvement in properties obtained by such a simple binary test alloy, the curves for two other CCAs (CrCoNi¹⁰ and CrMnFeCoNi⁸) with similar grain sizes are also presented. The yield strength of the NiV solid solution alloy is about 750 MPa and the ultimate tensile strength is close to 1200 MPa, notably outperforming the previous CCAs. $\Delta\chi$ of NiV is 0.169, which is much larger than those of CrCoNi and CrMnFeCoNi. This clear result again confirms our hypothesis that an alloy with large electronegativity difference has a large strengthening effect, i.e., large complexity of local environments even with its relatively low mixing entropy.

Discussion

Here we established an efficient strategy for a property-targeted quantitative atomic-level complexity design of 3d CCAs based on the atomic-level pressure approximation. In CCAs, the local atomic environment is chemically complex. For example, the element-resolved mean lattice distortions of CrMnFeCoNi HEA are small on average, namely <0.5%, but their local fluctuations (i.e., standard deviations) caused by the fluctuation in local environments are an order of magnitude larger¹⁵. This complexity problem is a general challenge in many disordered solutions when aiming at quantitatively predicting their properties, as it requires complicated electronic structure calculations to obtain atomically resolved unit quantities of individual atoms. We thus have devised a suite of quantitative parameters which (a) can reduce the complexity problem inherent in CCAs and HEAs; and (b) can be related to several important properties, such as the mechanical response. As a result, we demonstrated that the dominant factor for the solid-solution strengthening

in 3d CCAs is the variation in the atomic-level pressures originating from charge transfer among neighboring elements. Moreover, we developed a design recipe which uses readily accessible electronegativity values to obtain the solid-solution strength in 3d CCAs, which include large sub-groups of important commercial alloys.

Prediction of the solid-solution strength does not provide a full prediction of all micromechanical strengthening mechanisms of CCAs. For instance, 2/3 of the yield strength of CrMnFeCoNi (360 MPa for the sample with a grain size of 4.4 μm) is caused by grain boundary strengthening³⁶. The remaining portion of the yield strength—equivalent to its temperature-dependent portion, mainly stemming from solid-solution strengthening—is 125 MPa at room temperature. Incidentally, the atomic-level pressure is not limited to solid-solution strengthening analysis alone. Recently, a proportional relationship between the mean squared atomic displacement (and hence, lattice distortion) and grain boundary strengthening has been proposed by comparing NiCoCr and NiCoV CCAs³⁷ where a significant role of grain boundary strengthening was observed for NiCoV (grain boundary strengthening: 365 MPa, temperature-dependent portion: 383 MPa). This finding shows that the atomic-level pressure (and stress) influence grain boundary strengthening as well, considering the fact that lattice distortion originates from atomic-level pressure (and stress). Furthermore, similar to solid solution strengthening, thermal activation barriers and activation volumes experienced by gliding dislocations also originate from the configurational fluctuation of the atomic-level pressure³⁸. This means that the atomic-level pressure concept is a fundamental material parameter which may help understanding and quantifying also several other deformation mechanisms. Therefore, further studies are required to explore quantitative relationships between atomic-level pressure, charge transfer, and various deformation mechanisms.

Aside from the mechanical properties, the phase stability of CCAs is usually discussed in terms of mixing enthalpy and lattice strain energy of the alloy system³. The Miedema model³¹, a widely accepted fundamental theory to predict the mixing enthalpy, includes charge transfer as an important parameter. On the other hand, the lattice strain energy of CCAs has been discussed with regard to the difference in the atomic sizes of the constituent elements in their pure states. As the lattice strain energy also originates from the atomic-level pressure, we suggest that charge transfer dominates not only the mixing enthalpy but also the lattice strain energy, thereby affecting phase stability. Therefore, the proposed electronic-to-macro coupling approach using the concept of atomic-level pressure provides a fundamental perspective on the atomic-level complexity of disordered metallic materials. It enables computation of the local energy landscape and provides a means to condense it into theoretical models without sacrificing physics-related plausibility or capability for trend analysis, thereby helping to meet increasing needs to customize complexity-induced properties.

Methods

Specimen preparation. The samples were produced by arc melting method using metallurgical ingredients above 99.9% purity under Ti-gettered high-purity Argon atmosphere. The alloy button was re-melted more than five times to improve the compositional homogeneity. In cases where the alloy included Mn or Cr, the elements were placed and thus partially sealed below the other constituents to minimize evaporation.

The EXAFS samples (Ni, CoNi, FeNi, MnCoNi, MnFeNi, CrCoNi, FeCoNi, CrMnCoNi, MnFeCoNi, CrFeCoNi, CrMnFeCoNi) were then suction casted into a water-cooled copper mold with a rectangular cavity (=12 mm width \times 4 mm thickness \times 50 mm length). The suction casted alloys were homogenized at 1050–1200 $^{\circ}\text{C}$ for 24 h in an Ar atmosphere and eventually quenched in water. The homogenized samples underwent cold rolling to a total rolling reduction ratio of 70–85% followed by annealing above the recrystallization temperature in an Ar

atmosphere followed by water quenching. Homogenization and recrystallization annealing conditions are the same as outlined in the ref.²⁵, except CrMnFeCoNi (recrystallization annealing at 1000 $^{\circ}\text{C}$ for 1 h). The bulk samples were mechanically ground into a 15 μm -thick ribbon, with SiC abrasive paper down to P4000.

The binary NiV alloy was then suction casted into a water-cooled copper mold with rectangular shape cavity (=15 mm width \times 6 mm thickness \times 50 mm length). The suction casted alloy was cold rolled to 30% thickness reduction to destroy the eutectoid structure established during the solidification process. The cold rolled sample was then wrapped in Ta foil and homogenized at 1075 $^{\circ}\text{C}$ for 45 h inside a quartz tube under a high vacuum condition. The homogenized sample was cold rolled to 60% thickness reduction and then underwent recrystallization annealing at 920 $^{\circ}\text{C}$ for 3 min.

Analysis. EXAFS measurements were carried out on the 7D beamline of the Pohang Accelerator Laboratory (PLS-II, 3.0 GeV, Pohang, Korea). The measurement conditions are fully described in the ref.¹⁵. The obtained datasets of 3d CCAs were aligned and processed to avoid instrumental background and absorption from other edges using the Athena in the IFFFIT 1.2.11d suite of software³⁹. All processes were conducted in the same conditions: pre-edge range with energy of -150 to -30 eV, normalization range with energy of 50–500 eV, and spline range with wave numbers of 0–11 \AA^{-1} . The structural parameters of the first peak were obtained through the fits of the absorption data to single scattering paths with wave numbers of 3–10.5 \AA^{-1} and interatomic distances of 1–3 \AA for each element (Cr, Mn, Fe, Co, Ni). In order to decrease the number of variables, we assumed (1) homogeneous compositional distribution, i.e., the coordination number of each bond type is $12/n$, where n is the number of elements, and (2) uniform bond length around the fitted element (Supplementary Fig. 7a). As a result, the final average atomic radius $R_{\text{f,solute}}$ of each element was obtained. The EXAFS modeling R-factors range from 0.001 to 0.003 for all fittings. The sequence of sizes of the obtained average atomic radii (Fig. 3b) matches well with the sequence of theoretical mean atomic radii (Fig. 2a, b, and Supplementary Fig. 1) obtained by DFT calculation. We also quantitatively confirmed this in¹⁵. The average atomic radius $\bar{R}_{\text{EXAFS}} = \sum_{i=1}^n c_i R_{\text{f,solute},i}$ matches well with the reported average atomic radius measured using X-ray diffraction by the relation $\bar{R}_{\text{XRD}} = a/\sqrt{2}$ (Supplementary Fig. 7b)²³. Although there are small differences between \bar{R}_{EXAFS} and \bar{R}_{XRD} , they come from the narrow EXAFS-normalization, spline, and fitting range used here, due to the similar energy range of the elements. As the processing conditions are unified in whole samples, the small differences in the absolute values are negligible.

The phase structure of the recrystallized NiV alloy sample was identified at room temperature using high-energy X-ray diffraction (HE-XRD) performed at sector 6-ID-D of the advanced photon source (APS) at the Argonne National Laboratory, Chicago, USA. HE-XRD patterns were collected in the transmission mode. The wavelength of the X-ray beam used was 0.123686 \AA and the distance between sample and 2D detector was 394.6497 mm. 2D image collected by a 2D detector was converted into 1D pattern for final data analysis using the Fit2D software.

The microstructure of the recrystallized NiV alloy was characterized using a Hitachi SU70 field emission scanning electron microscopy (SEM) with energy-dispersive X-ray spectroscopy (EDS) and electron backscattered diffraction (EBSD). The chemical uniformity was examined using EDS (X-MAX50, Horiba) at the microscopic scale. EBSD measurement was performed with a Hikari camera and the TSL OIM data-collection software. The EBSD scan step size was 75 nm and a tolerance angle of 5 $^{\circ}$ was used for grain identification.

Rectangular dog-bone shaped tensile specimens, with a gauge length of 10 mm, were machined from the recrystallized sheet sample by electrical discharge machining (EDM). Oxidation layer formed during EDM cutting was removed by mechanical grinding using SiC paper. Both sides of the specimens were also ground resulting in a final thickness of ~ 1.6 mm and a gauge width of ~ 2.6 mm. Uniaxial tensile tests were carried out (Instron 5967, Instron, Norwood, USA) at an engineering strain rate of 10^{-3} s^{-1} . The strain evolution during the tensile test was measured by AVE camera. In total, 5 samples were tested to confirm reproducibility.

First-principles calculations of atomic-level pressure. Classically, the Eshelby inclusion model⁴⁰ has been utilized to elaborate the concept of atomic-level pressure. In order to reflect atomistic and electronic effects, however, we applied here a quantum-mechanically derived atomic-level pressure approximation. The key elements that define the atomic stresses are (i) decomposition of the system's energy into atomic contributions and (ii) observing the change of the atomic energy in response to cell distortions.

There are different approaches to decompose the energy, each of which can be used to define atomic-level stresses^{41–44}. In this work we used the Voronoi tessellation as implemented in the locally self-consistent multiple scattering (LSMS) method^{18,19}. In the LSMS method, the total volume is decomposed into Voronoi polyhedron around each atom and the energy is calculated within each polyhedron. The total energy of the system is then given as the sum of atomic energies.

We define the energy per atom as:

$$E_i = \int_{\Omega_i} \epsilon n^i(\epsilon) d\epsilon - \int_{\Omega_i} V_{KS}(r) \rho(r) d\mathbf{r} - \frac{1}{2} \int_{\Omega_i} \rho_C \phi d\mathbf{r} + \int_{\Omega_i} \rho_{XC}(\rho) d\mathbf{r} - \frac{1}{8\pi} \int_{\Omega_i} \mathbf{E}_Z \cdot d\mathbf{r},$$

where $n^i(\epsilon)$ is the local density of states on site i at energy ϵ , Ω_i is the volume of space associated with site i , $V_{KS}(r)$ is the Kohn–Sham potential, $\rho(r)$ electron density, ϕ Poisson potential, ρ_C charge density, ϵ_{XC} local exchange correlation energy, and \mathbf{E}_Z electrostatic field due to nuclei. The first two terms in the equation constitute site kinetic energy, the third term is the electrostatic energy due to the electronic density, the fourth term is the exchange–correlation energy and the last term is the electrostatic energy due to nuclei, each corresponding to a single atomic volume¹⁶. It should be noted that this energy decomposition allows full relaxation of the electron density under cell distortions minimizing the energy of the system in the spirit of the Born–Oppenheimer principle, and thus differs from the affine transformation in the scaling equations introduced by Nielsen and Martin^{45,46}. The LSMS method calculates the electron density within each atomic site, and the Poisson equation is then solved with periodic boundary condition to obtain the Hartree potential. The effective Kohn–Sham potential is obtained by adding the exchange–correlation potential and the cycle is repeated until a self-consistent result is achieved. The exchange–correlation energy was treated in the local approximation using the functional of Von Barth and Hedin⁴⁷. The atomic energy was calculated within the Voronoi polyhedral for each site. The LSMS takes into account the multiple scattering contributions from atoms only in the local interaction zone (LIZ) to obtain the electron density on that site. In our case, the LIZ radius is set at $14.8a_0$, and the maximum angular moment is $l=3$.

The first principles calculation of atomic-level stresses was performed in two stages employing two different DFT based methods: (i) the projected augmented wave method (PAW)⁴⁸ as implemented in Vienna ab-initio simulation package (VASP)^{49,50} was used for geometry optimization of the CCAs, and (ii) the LSMS method is applied to compute the atomic-level stresses as outlined above.

The disordered environment was simulated using the supercell method, based on conventional cubic special quasi-random structures (SQS)⁵¹ with 256 atoms included except for NiV (108 atoms). We used the plane wave energy cutoff of 400 eV and Γ -centered $2 \times 2 \times 2$ Monkhorst–Pack grids⁵² for the Brillouin zone integration. The exchange–correlation is treated in the generalized gradient approximation (GGA), parametrized by Perdew et al.⁵³ Structural optimizations were performed using the quasi-Newton algorithm and the Methfessel–Paxton smearing scheme (with smearing 0.1 eV). The equilibrium volumes of the SQS structures were first optimized till the pressure vanishes, followed by atomic relaxation until the Hellmann–Feynman forces were lower than $0.005 \text{ eV } \text{Å}^{-1}$. The cubic cell shape was kept throughout our calculations. All supercell calculations, except for CrCoNi, were performed based on collinear magnetic states.

Next, the optimized supercell structures were subject to affine deformations, in which the volume of the supercell is changed by about 1% and atomic energies were calculated using the LSMS method. In general, the atomic-level stress tensor is defined as:⁴⁹

$$\sigma_i^{\alpha\beta} = \frac{1}{\Omega_i} \sum_j f_{ij}^{\alpha} r_{ij}^{\beta},$$

where α and β are Cartesian coordinates, Ω_i is the atomic volume at site i , and f_{ij}^{α} and r_{ij}^{β} are the force and distance between atoms i and j . The atomic-level hydrostatic pressure is then given as:

$$p_i = \frac{1}{3} \text{Tr}(\overline{\sigma}_i) = \frac{1}{3} (\sigma_i^{xx} + \sigma_i^{yy} + \sigma_i^{zz})$$

Under the volume strain we applied to the supercell, the atomic-level pressure can be calculated for each atom as the negative of derivative of the energy with respect to the atomic volume. Accordingly, we calculated the energy of each atom at two different volumes and calculated the derivative by dividing the difference in energy at two different strains by the volume strain.

The electron density was integrated within the Voronoi polyhedron associated with each lattice site to calculate the local charge transfer.

Data availability

The data that support the findings of this study are available from the corresponding authors, at d.raabe@mpie.de, egami@utk.edu, or espark@snu.ac.kr, upon reasonable request.

Received: 15 February 2019 Accepted: 11 April 2019

Published online: 07 May 2019

References

1. Miracle, D. & Senkov, O. A critical review of high entropy alloys and related concepts. *Acta Mater.* **122**, 448–511 (2017).

- Gorsse, S., Miracle, D. B. & Senkov, O. N. Mapping the world of complex concentrated alloys. *Acta Mater.* **135**, 177–187 (2017).
- Zhang, Y. et al. Microstructures and properties of high-entropy alloys. *Prog. Mater. Sci.* **61**, 1–93 (2014).
- Egami, T. Atomic level stresses. *Prog. Mater. Sci.* **56**, 637–653 (2011).
- Mills, W. J. Fracture toughness of type 304 and 316 stainless steels and their welds. *Int. Mater. Rev.* **42**, 45–82 (1997).
- Bouaziz, O., Allain, S., Scott, S. P., Cugy, P. & Barbier, D. High manganese austenitic twinning induced plasticity steels: a review of the microstructure properties relationships. *Curr. Opin. Solid State Mater. Sci.* **15**, 141–168 (2011).
- Reed, R. C. Eds. *The Superalloys: Fundamentals and Applications 20–24* (Cambridge University Press, Cambridge, 2006).
- Gludovatz, B. et al. A fracture-resistant high-entropy alloy for cryogenic applications. *Science* **345**, 1153–1158 (2014).
- Gludovatz, B. et al. Exceptional damage-tolerance of a medium-entropy alloy CrCoNi at cryogenic temperatures. *Nat. Commun.* **7**, 10602 (2016).
- Zhao, Y. et al. Heterogeneous precipitation behavior and stacking-fault-mediated deformation in a CoCrNi-based medium-entropy alloy. *Acta Mater.* **138**, 72–82 (2017).
- Li, Z., Pradeep, K. G., Deng, Y., Raabe, D. & Tasan, C. C. Metastable high-entropy dual-phase alloys overcome the strength-ductility trade-off. *Nature* **534**, 227–230 (2016).
- Lubarda, V. On the effective lattice parameter of binary alloys. *Mech. Mater.* **35**, 53–68 (2003).
- Uesugi, T. & Higashi, K. First-principles studies on lattice constants and local lattice distortions in solid solution aluminum alloys. *Comput. Mater. Sci.* **67**, 1–10 (2013).
- Okamoto, N. L., Yuge, K., Tanaka, K., Inui, H. & George, E. P. Atomic displacement in the CrMnFeCoNi high-entropy alloy—A scaling factor to predict solid solution strengthening. *AIP Adv.* **6**, 125008 (2016).
- Oh, H. S. et al. Lattice distortions in the FeCoNiCrMn high entropy alloy studied by theory and experiment. *Entropy* **18**, 321 (2016).
- Nicholson, D., Ojha, M. & Egami, T. First-principles local stress in crystalline and amorphous metals. *J. Phys. Condens. Matter* **25**, 435505 (2013).
- Egami, T., Ojha, M., Khorgolkhuu, O., Nicholson, D. & Stocks, G. Local electronic effects and irradiation resistance in high-entropy alloys. *JOM* **67**, 2345–2349 (2015).
- Wang, Y. et al. Order-N multiple scattering approach to electronic structure calculations. *Phys. Rev. Lett.* **75**, 2867 (1995).
- Nicholson, D. et al. Stationary nature of the density-functional free energy: application to accelerated multiple-scattering calculations. *Phys. Rev. B* **50**, 14686 (1994).
- Fleischer, R. Solution hardening. *Acta Metall.* **9**, 996–1000 (1961).
- Labusch, R. A statistical theory of solid solution hardening. *Phys. Status Solidi* **41**, 659–669 (1970).
- Leyson, G. P. M., Curtin, W. A., Hector, L. G. Jr. & Woodward, C. F. Quantitative prediction of solute strengthening in aluminium alloys. *Nat. Mater.* **9**, 750–755 (2010).
- Varvenne, C., Luque, A. & Curtin, W. A. Theory of strengthening in fcc high entropy alloys. *Acta Mater.* **118**, 164–176 (2016).
- Varvenne, C., Leyson, G., Ghazisaeidi, M. & Curtin, W. Solute strengthening in random alloys. *Acta Mater.* **124**, 660–683 (2017).
- Wu, Z., Bei, H., Pharr, G. M. & George, E. P. Temperature dependence of the mechanical properties of equiatomic solid solution alloys with face-centered cubic crystal structures. *Acta Mater.* **81**, 428–441 (2014).
- Goldschmidt, V. M. Uber atomabstande in metallen. *Z. Phys. Chem.* **133**, 397–419 (1928).
- Pauling, L. Atomic radii and interatomic distances in metals. *J. Am. Chem. Soc.* **69**, 542–553 (1947).
- Ding, J. & Cheng, Y. Q. Charge transfer and atomic-level pressure in metallic glasses. *Appl. Phys. Lett.* **104**, 051903 (2014).
- Zhang, Y., Zhou, Y. J., Lin, J. P., Chen, G. L. & Liaw, P. K. Solid-solution phase formation rules for multi-component alloys. *Adv. Eng. Mater.* **10**, 534–538 (2008).
- Zhang, L., Wen, M., Imade, M., Fukuyama, S. & Yokogawa, K. Effect of nickel equivalent on hydrogen gas embrittlement of austenitic stainless steels based on type 316 at low temperatures. *Acta Mater.* **56**, 3414–3421 (2008).
- Miedema, A. R. The electronegativity parameter for transition metals: heat of formation and charge transfer in alloys. *J. Less Common Met.* **32**, 117–136 (1973).
- Mann, J. B., Meek, T. L., Knight, E. T., Capitani, J. F. & Allen, L. C. Configuration energies of the d-Block elements. *J. Am. Chem. Soc.* **122**, 5132–5137 (2000).
- Fisher, J. C. On the strength of solid solution alloys. *Acta Metall.* **2**, 9–10 (1954).
- Starink, M. J., Cao, L. F. & Rometsch, P. A. A model for the thermodynamics of and strengthening due to co-clusters in Al–Mg–Si-based alloys. *Acta Mater.* **60**, 4194–4207 (2012).

35. Guo, S., Ng, C., Lu, J. & Liu, C. T. Effect of valence electron concentration on stability of fcc or bcc phase in high entropy alloys. *J. Appl. Phys.* **109**, 103505 (2011).
36. Otto, F. et al. The influences of temperature and microstructure on the tensile properties of a CoCrFeMnNi high-entropy alloy. *Acta Mater.* **61**, 5743–5755 (2013).
37. Sohn, S. S. et al. Ultrastrong medium-entropy single-phase alloys designed via severe lattice distortion. *Adv. Mater.* **31**, e1807142 (2018).
38. Laplanche, G., Bonneville, J., Varvenne, C., Curtin, W. A. & George, E. P. Thermal activation parameters of plasticflow reveal deformation mechanisms in the CrMnFeCoNi high-entropy alloy. *Acta Mater.* **143**, 257–264 (2018).
39. Ravel, B. & Newville, M. ATHENA, ARTEMIS, HEPHAESTUS: data analysis for X-ray absorption spectroscopy using IFEFFIT. *J. Synchrotron Radiat.* **12**, 537–541 (2005).
40. Eshelby, J. D. The determination of the elastic field of an ellipsoidal inclusion and related problems. *Proc. R. Soc. Lond.* **241**, 376–396 (1957).
41. Bader, R. F. W. *Atoms in Molecules: A Quantum Theory* (Oxford University Press, Oxford, 1990).
42. Yu, M. & Trinkle, D. R. Accurate and efficient algorithm for Bader charge integration. *J. Chem. Phys.* **134**, 064111 (2011).
43. Yu, M., Trinkle, D. R. & Martin, R. M. Energy density in density functional theory: application to crystalline defects and surfaces. *Phys. Rev. B* **83**, 115113 (2011).
44. Shihara, Y., Kohyama, M. & Ishibashi, S. Ab initio local stress and its application to Al (111) surfaces. *Phys. Rev. B* **81**, 075441 (2010).
45. Nielsen, O. & Martin, R. M. First-principles calculation of stress. *Phys. Rev. Lett.* **50**, 697–700 (1983).
46. Johnson, D. D., Nicholson, D., Pinski, F., Gyorffy, B. & Stocks, G. Density-functional theory for random alloys: total energy within the coherent-potential approximation. *Phys. Rev. Lett.* **56**, 2088–2091 (1986).
47. Barth, Uvon & Hedin, L. A local exchange-correlation potential for the spin polarized case. i. *J. Phys. C* **5**, 1629–1642 (1972).
48. Blöchl, P. E. Projector augmented-wave method. *Phys. Rev. B* **50**, 17953 (1994).
49. Kresse, G. & Furthmüller, J. Efficiency of ab-initio total energy calculations for metals and semiconductors using a plane-wave basis set. *Comput. Mater. Sci.* **6**, 15–50 (1996).
50. Kresse, G. & Furthmüller, J. Efficient iterative schemes for ab initio total-energy calculations using a plane-wave basis set. *Phys. Rev. B* **54**, 11169 (1996).
51. Zunger, A., Wei, S.-H., Ferreira, L. & Bernard, J. E. Special quasirandom structures. *Phys. Rev. Lett.* **65**, 353–356 (1990).
52. Monkhorst, H. J. & Pack, J. D. Special points for Brillouin-zone integrations. *Phys. Rev. B* **13**, 5188 (1976).
53. Perdew, J. P., Burke, K. & Ernzerhof, M. Generalized gradient approximation made simple. *Phys. Rev. Lett.* **77**, 3865–3868 (1996).

Acknowledgements

This work was supported by the National Research Foundation of Korea grant funded by the Korean government (Ministry of Science and ICT) (NRF-2018M3A7B8060601), the Ministry of Trade, Industry & Energy (MOTIE, Korea) under Industrial Technology Innovation Program (No. 10076474) and the Korea Polar Research Institute under

contract Polar Academic Program (PD16010). F.K., Y.I. and D.R. gratefully acknowledge funding from the Deutsche Forschungsgemeinschaft (SPP 2006) and F.K. gratefully acknowledges funding from NWO/ STW (VIDI grant 15707). K.O. and T.E. are supported by the U. S. Department of Energy, Office of Science, Basic Energy Sciences, Materials Science and Engineering Division. Part of the research of K.O. was supported by National University of Mongolia through grant FELLOWSHIP GRANT-P2018 for his visiting scholar project. Part of this research used resources of the Oak Ridge Leadership Computing Facility at Oak Ridge National Laboratory, supported by the Office of Science of the Department of Energy under contract DE-AC05-00OR22725, and the Advanced Photon Source, operated for the DOE Office of Science by Argonne National Laboratory under contract No. DE-AC02-06CH11357. The authors gratefully acknowledge fruitful discussions with Prof. William Curtin, Dr. Gerard Paul Leyson, Dr. Duancheng Ma, and Ms. So Yeon Kim.

Author contributions

H.S.O., E.S.P., T.E., D.R., C.C.T. and F.K. designed the research project. H.S.O., S.J.K., W.H.R. and K.N.Y. performed the experiments (supervised by E.S.P.). K.O. and S.M. conducted the simulation (supervised by T.E.). H.S.O., F.K., K.O., D.R., T.E. and E.S.P. wrote the paper with comments and input from C.C.T. and Y.I. All authors contributed to the discussion of the results, and commented on the manuscript.

Additional information

Supplementary Information accompanies this paper at <https://doi.org/10.1038/s41467-019-10012-7>.

Competing interests: The authors declare no competing interests.

Reprints and permission information is available online at <http://npg.nature.com/reprintsandpermissions/>

Journal peer review information: *Nature Communications* thanks the anonymous reviewers for their contribution to the peer review of this work

Publisher's note: Springer Nature remains neutral with regard to jurisdictional claims in published maps and institutional affiliations.



Open Access This article is licensed under a Creative Commons Attribution 4.0 International License, which permits use, sharing, adaptation, distribution and reproduction in any medium or format, as long as you give appropriate credit to the original author(s) and the source, provide a link to the Creative Commons license, and indicate if changes were made. The images or other third party material in this article are included in the article's Creative Commons license, unless indicated otherwise in a credit line to the material. If material is not included in the article's Creative Commons license and your intended use is not permitted by statutory regulation or exceeds the permitted use, you will need to obtain permission directly from the copyright holder. To view a copy of this license, visit <http://creativecommons.org/licenses/by/4.0/>.

© The Author(s) 2019