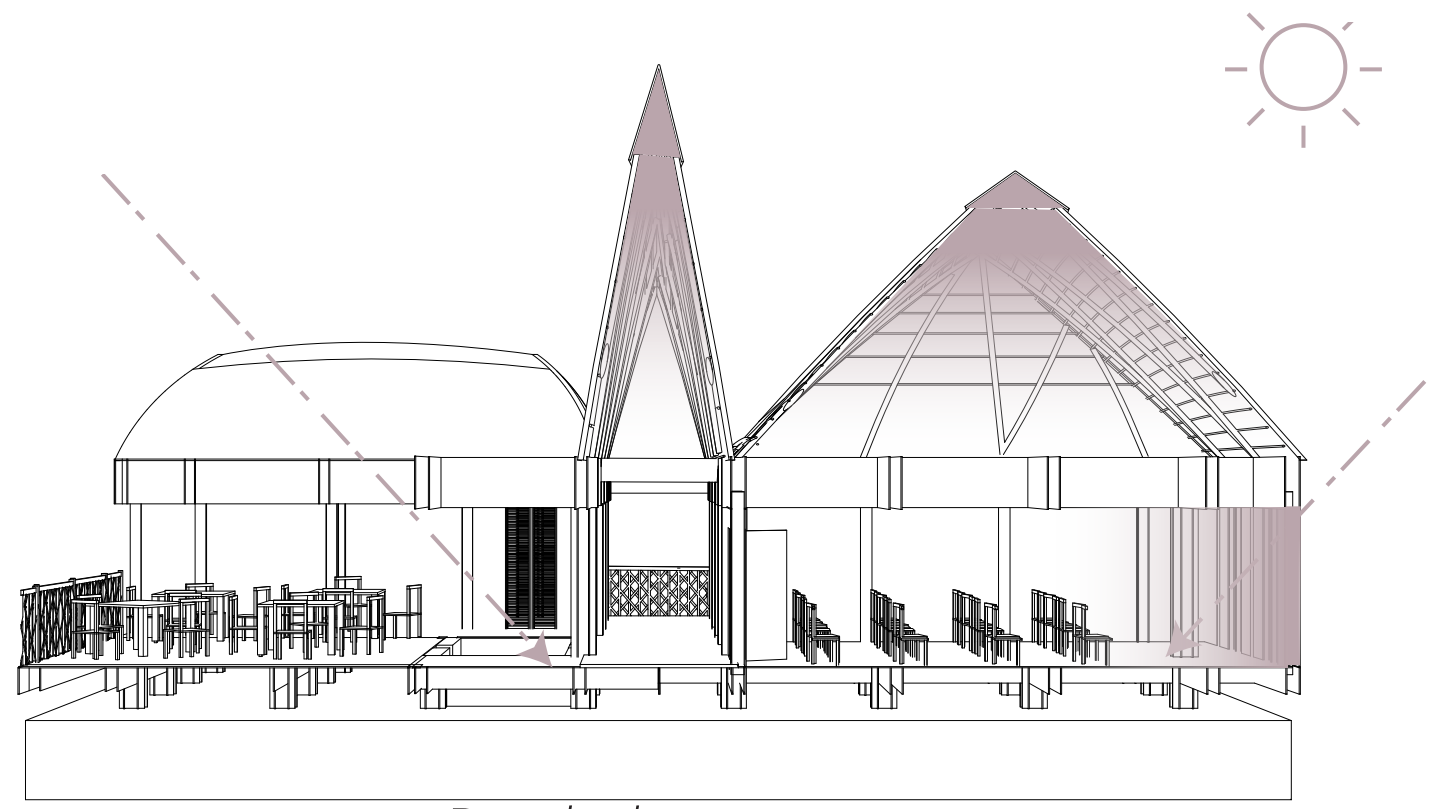
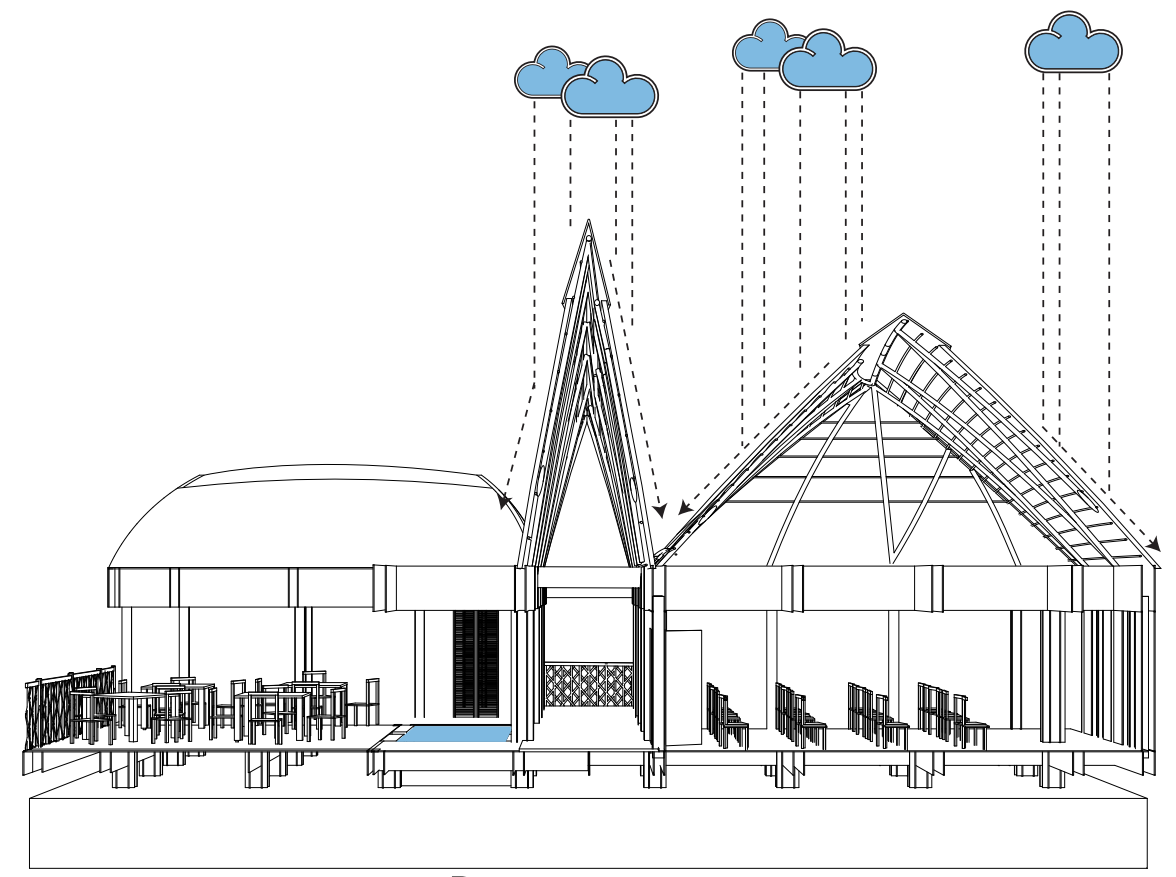
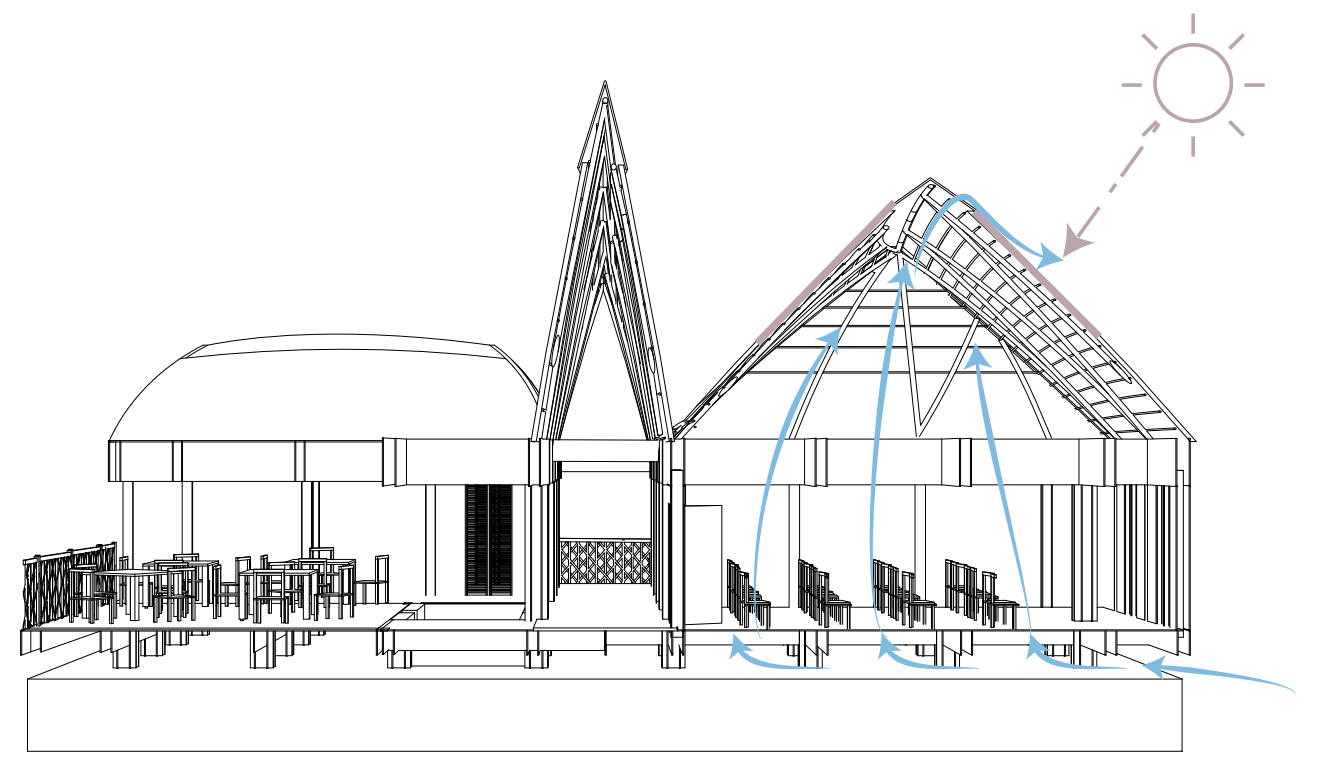
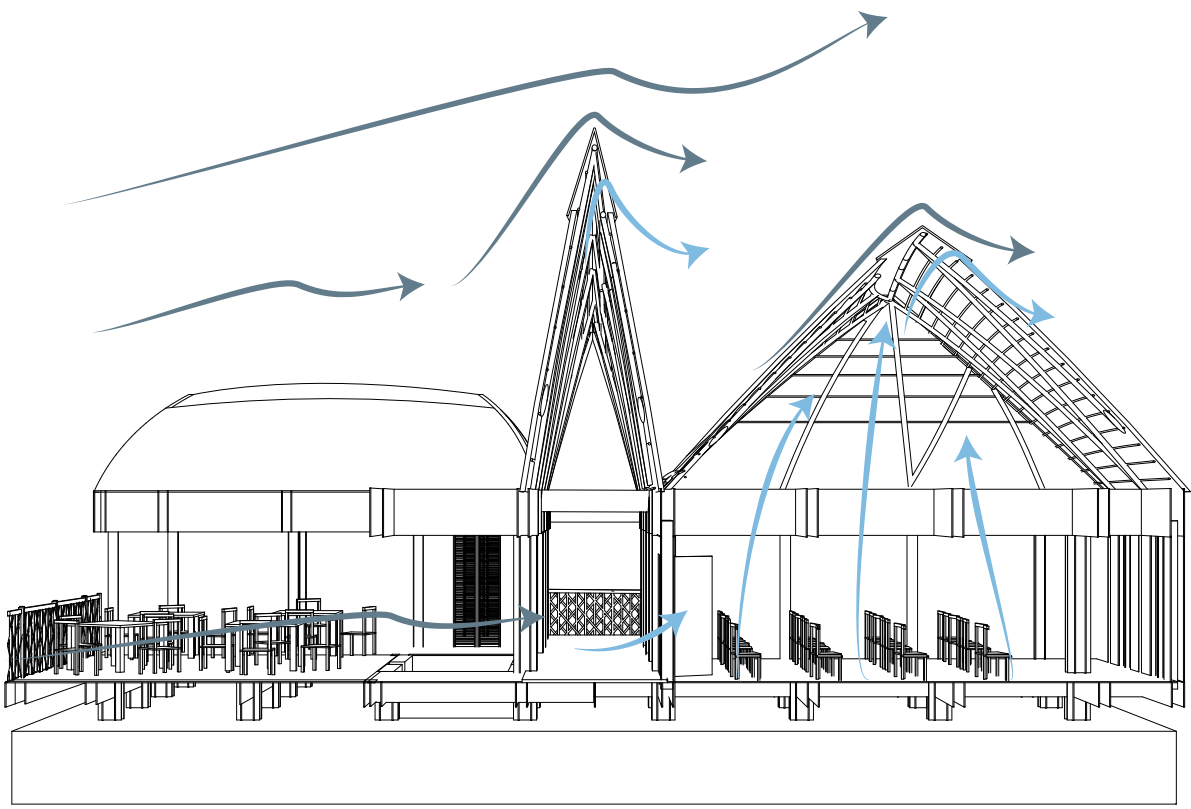


CLIMATE WEST BENGAL



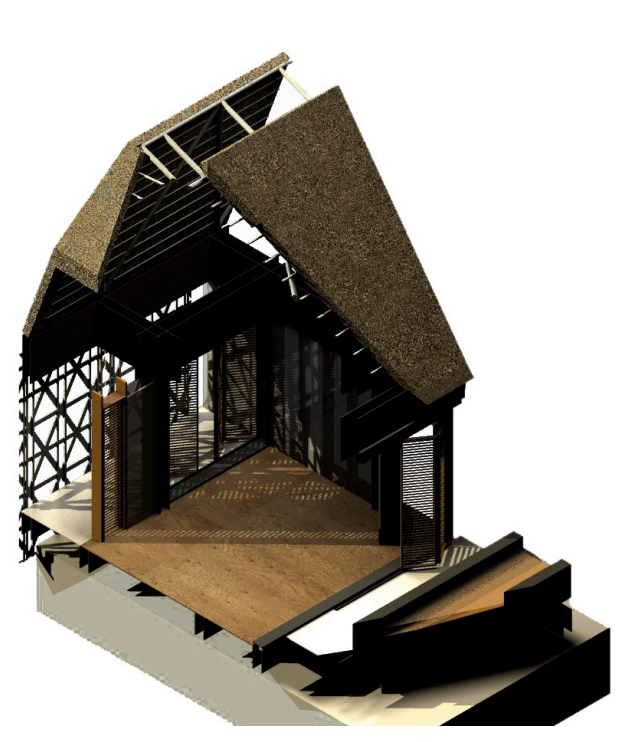
Diffused light through polycarbonate panels



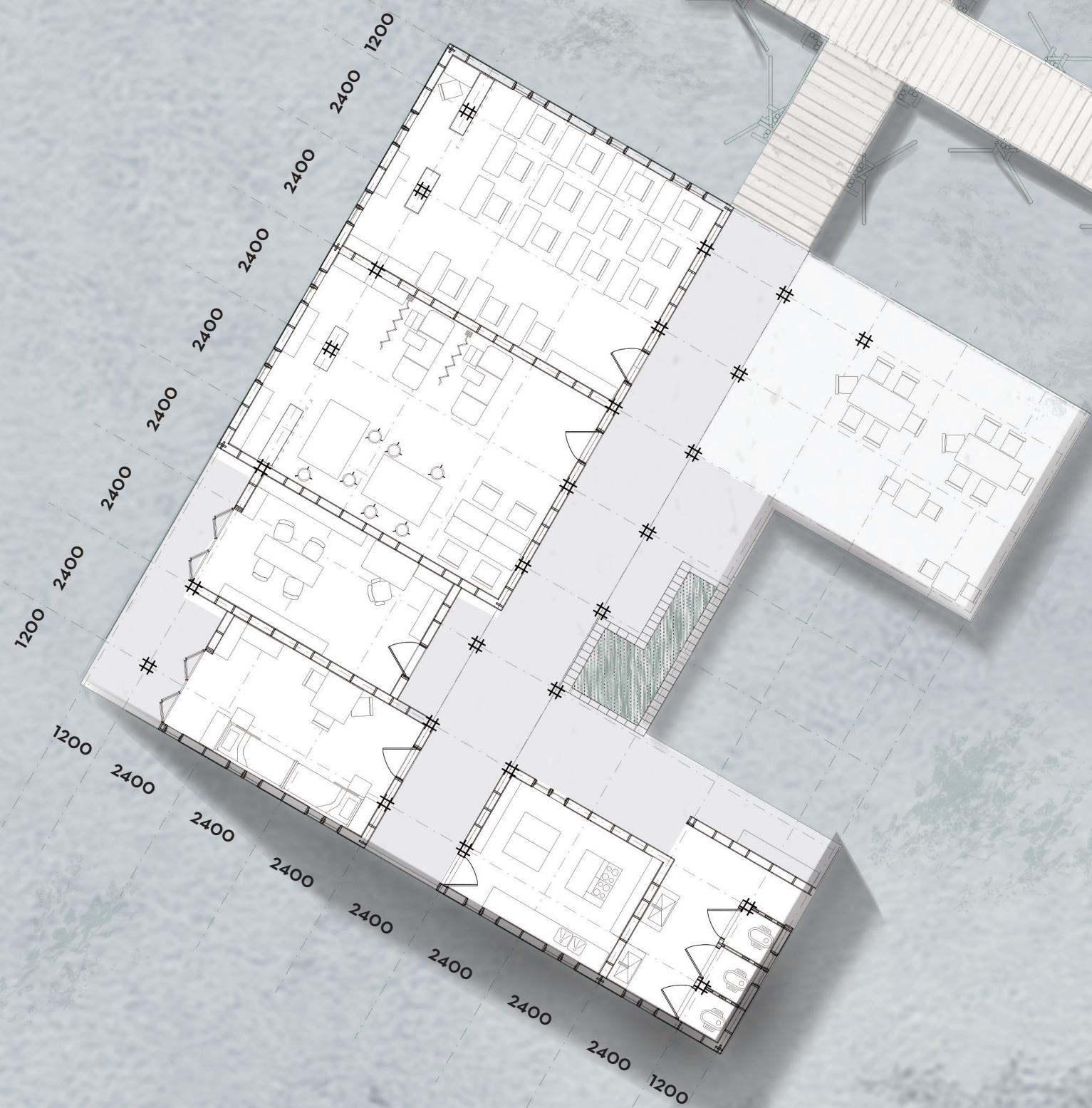
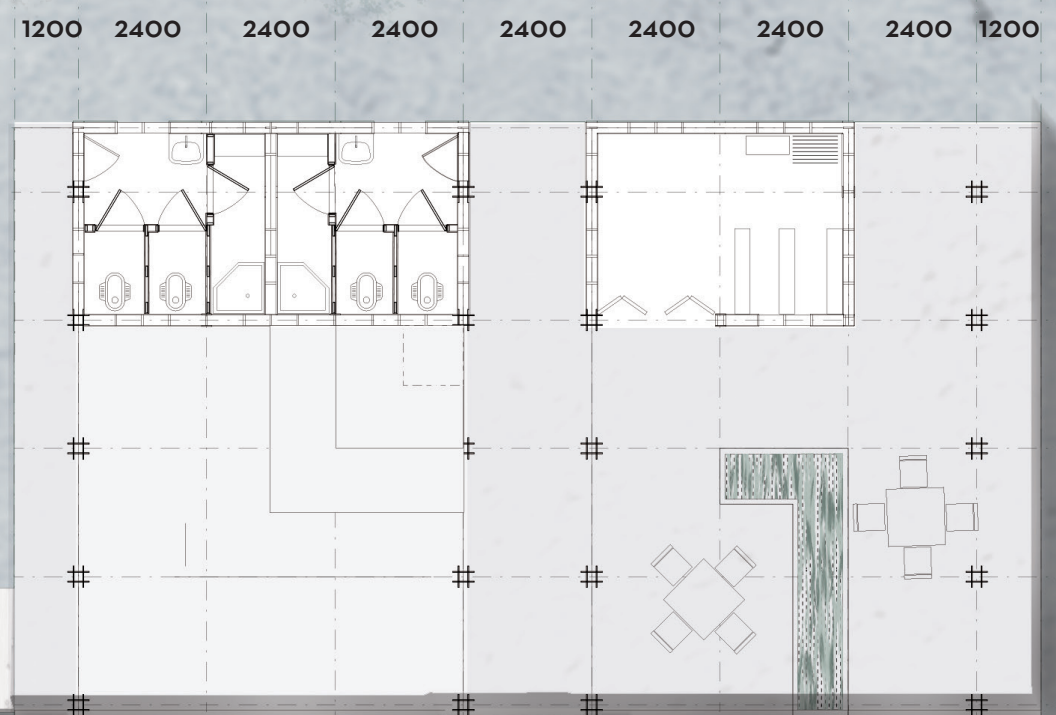
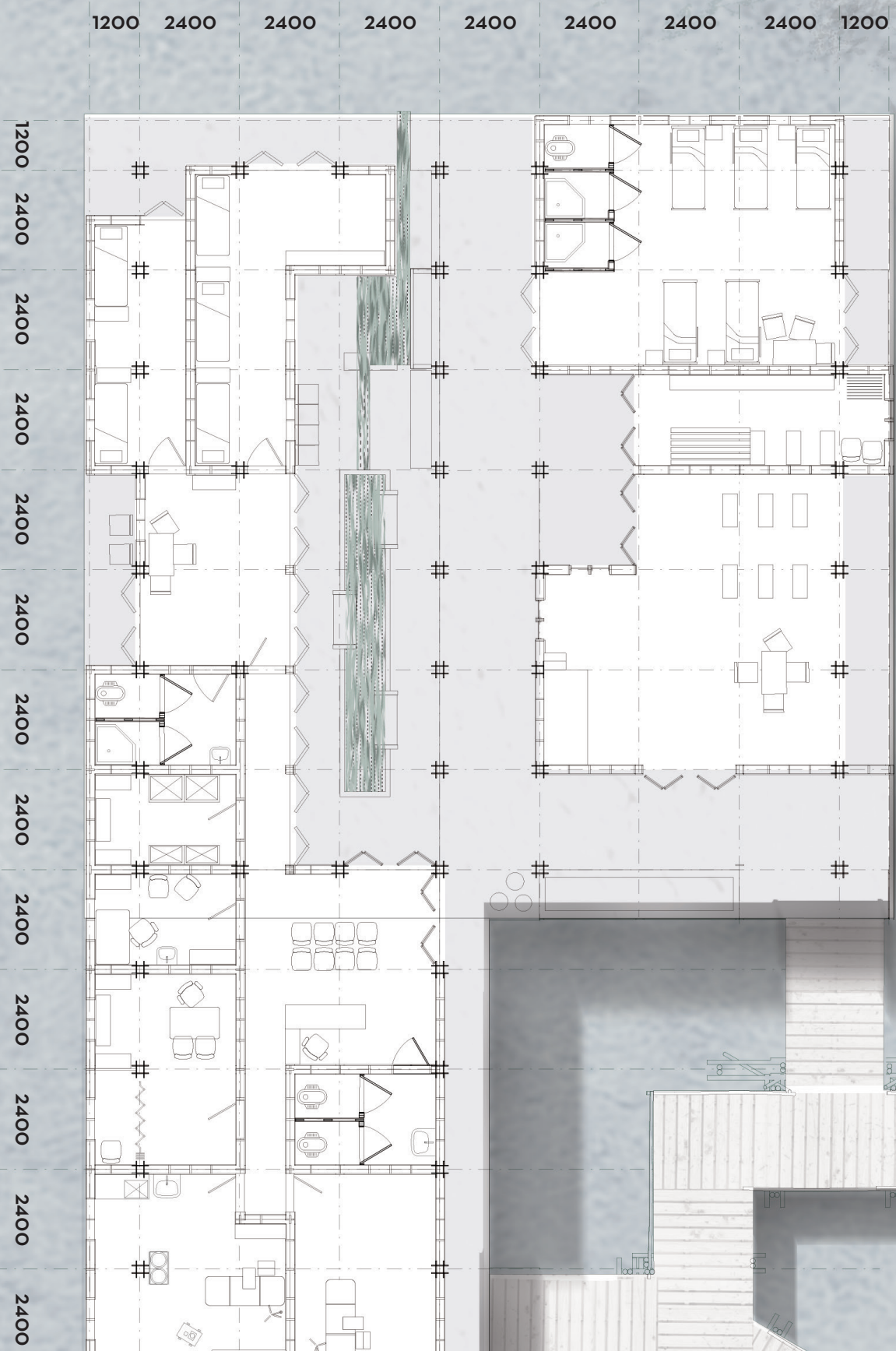
Air and light through louvers



Air and light through natural woven panel

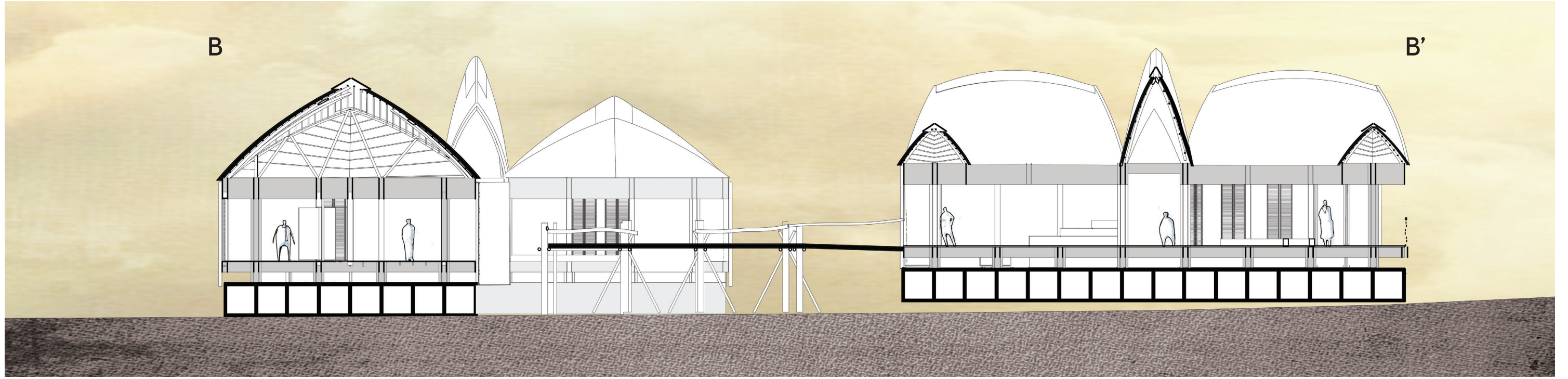
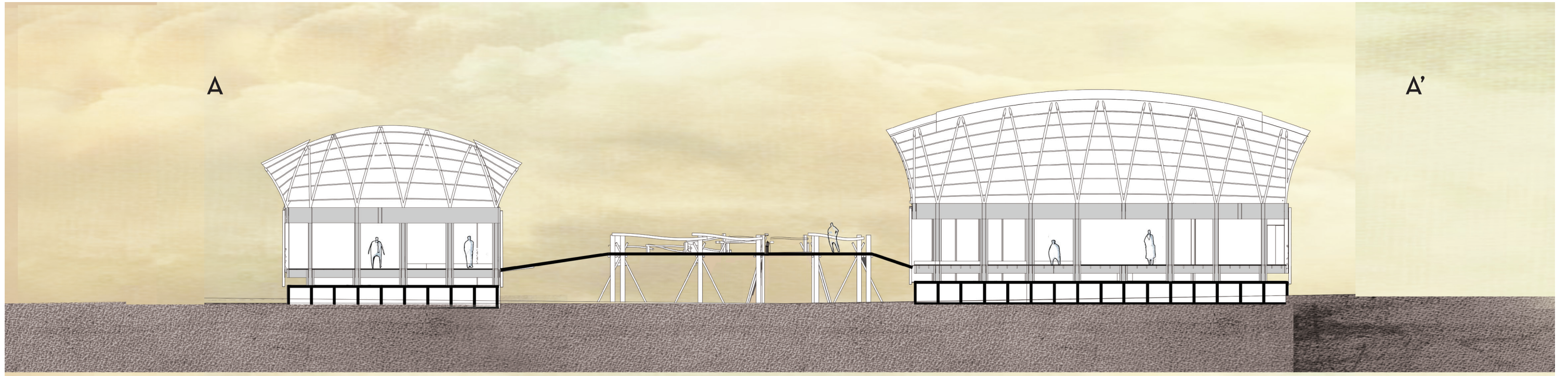


Second facade for open facades

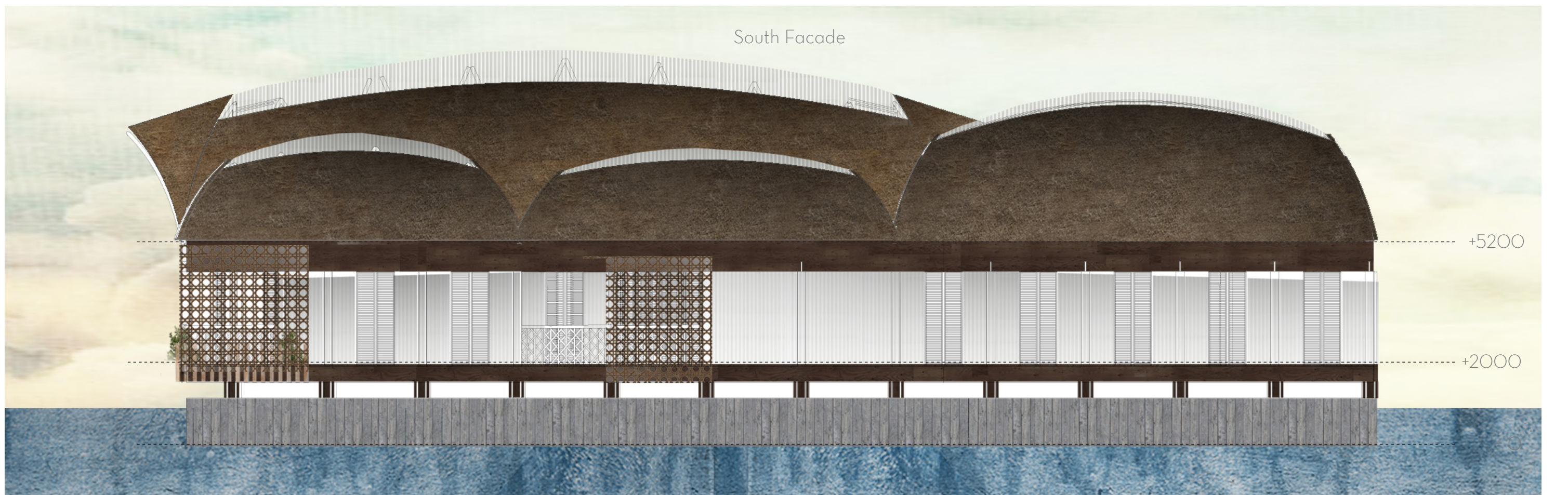


FLOOR PLAN

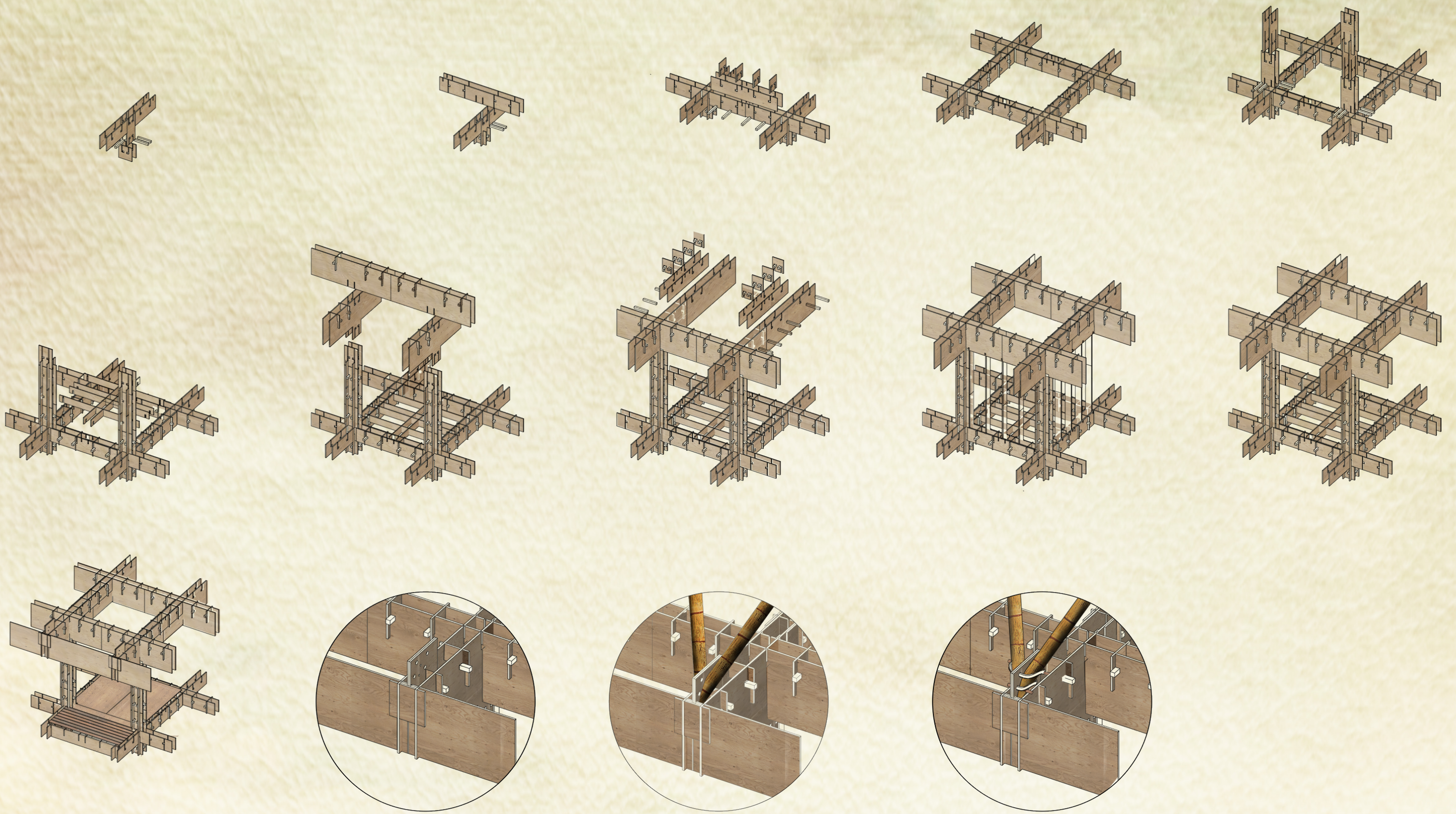




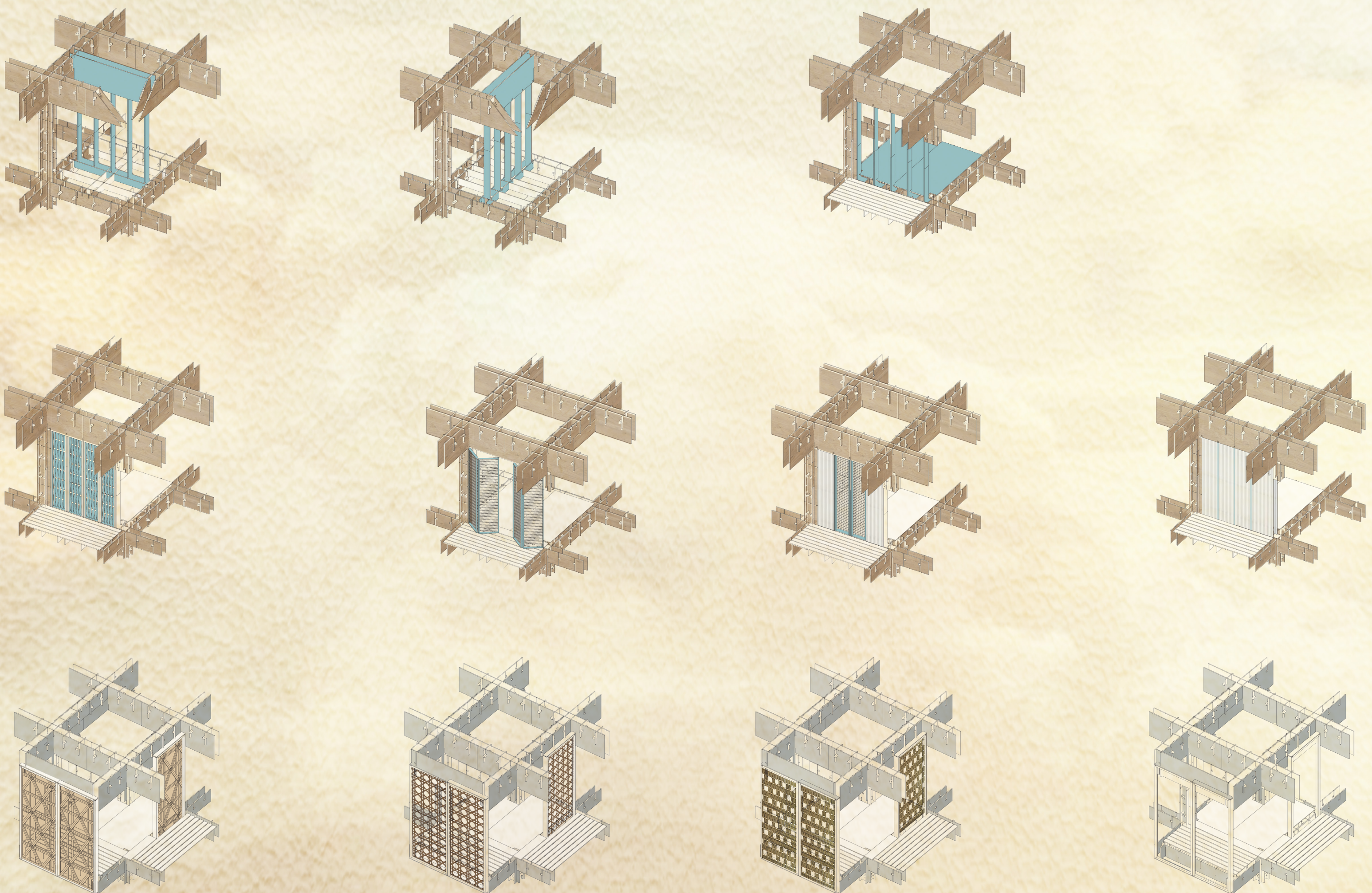
SECTIONS
1:200



FACADES CLINIC
1:100



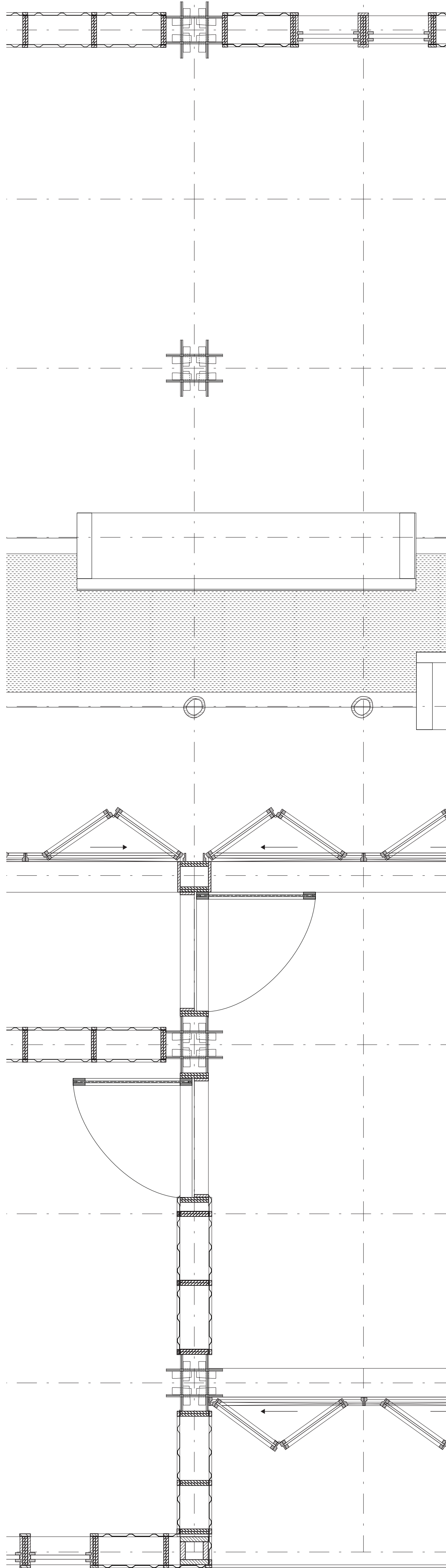
BUILDING SYSTEM



VARIATIONS POSSIBLE

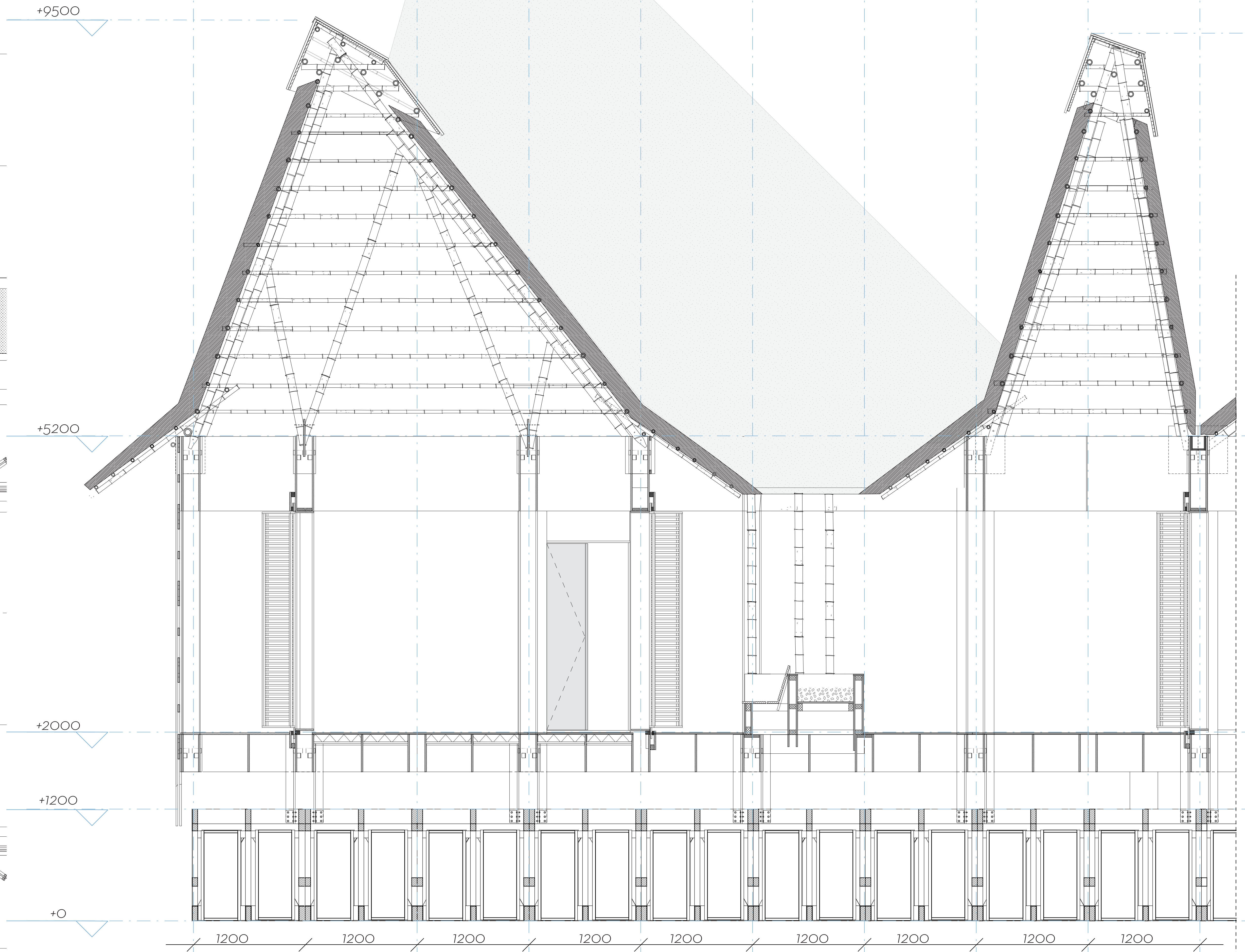
HORIZONTAL SECTION

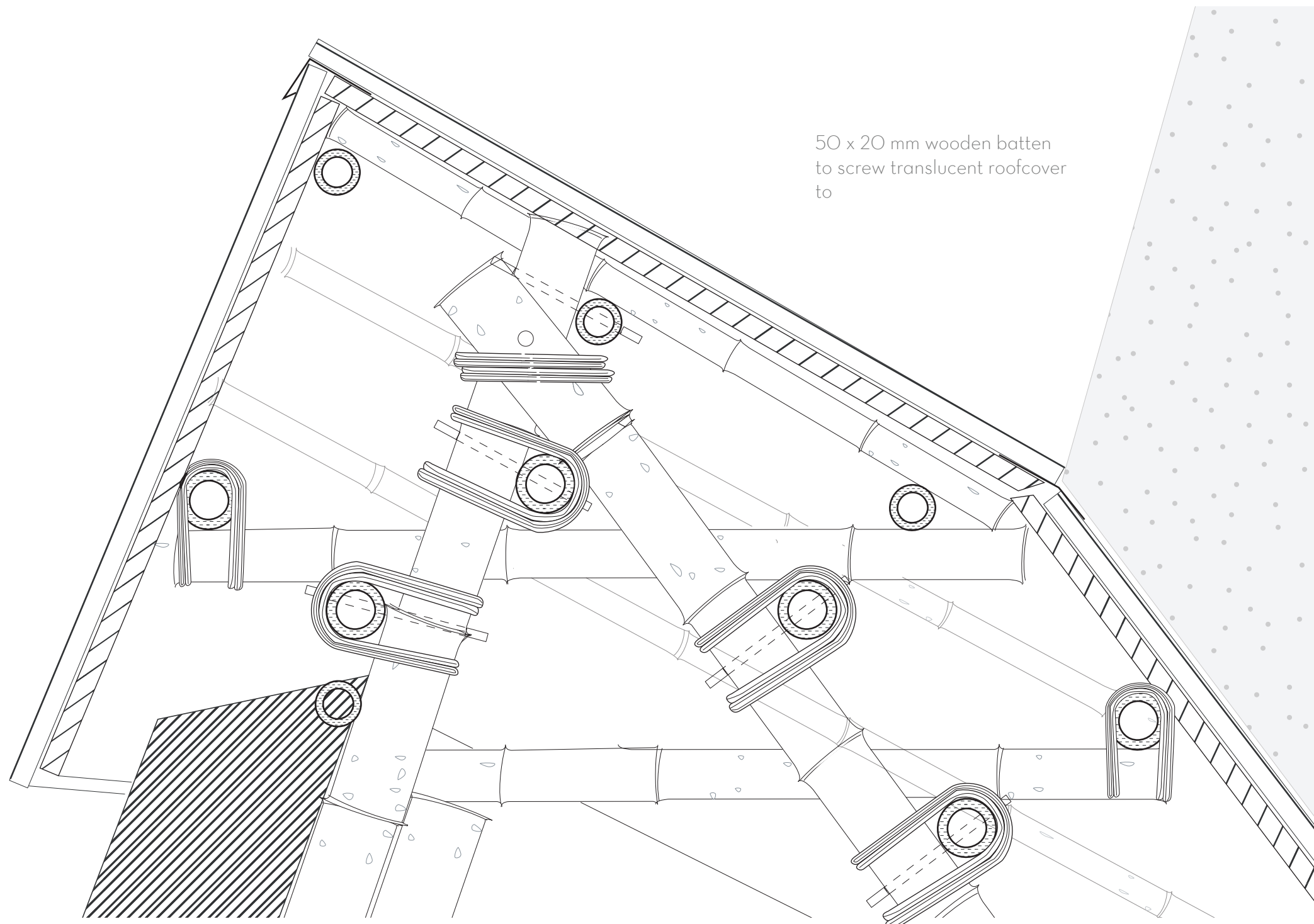
1:20



VERTICAL SECTION

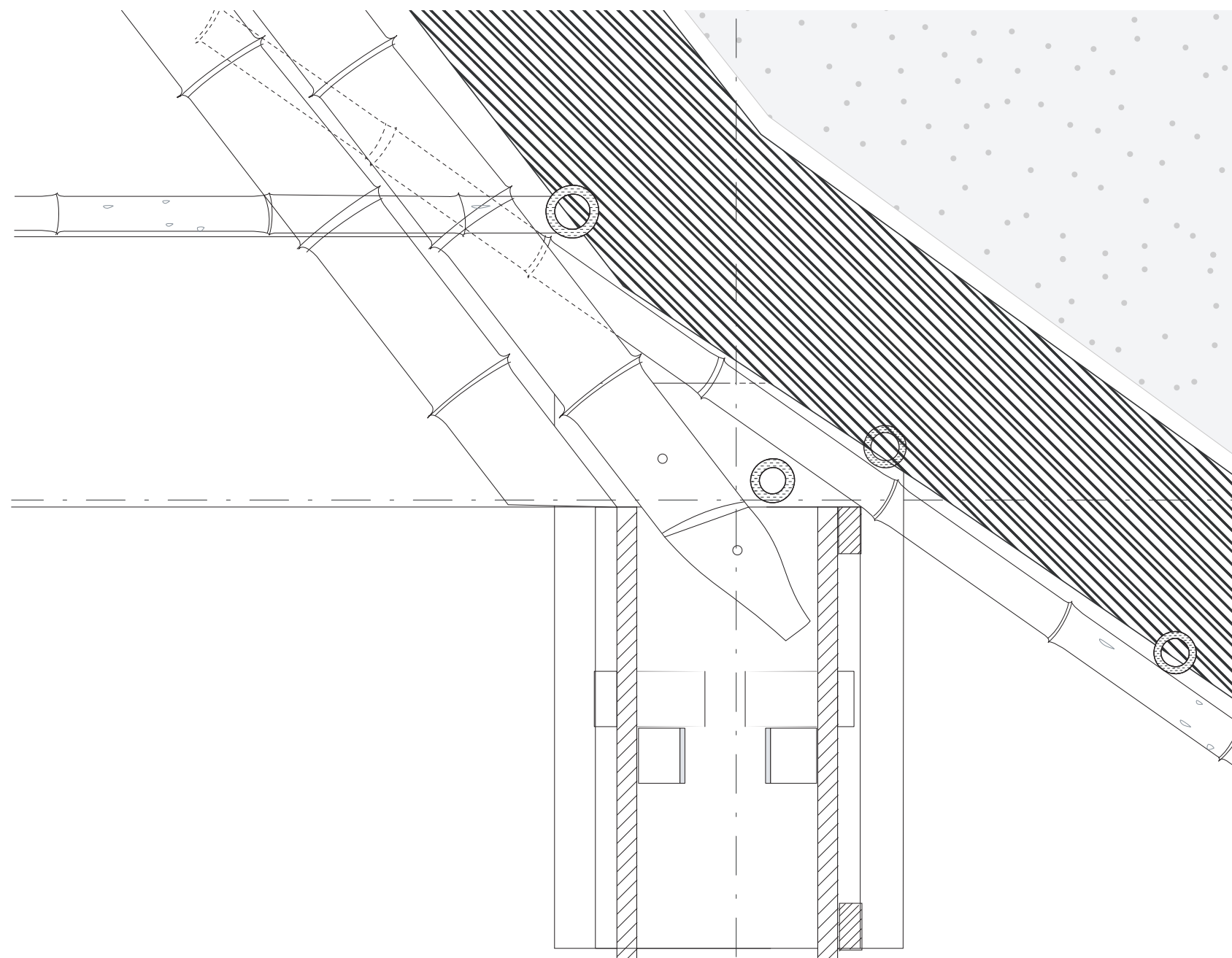
1:20





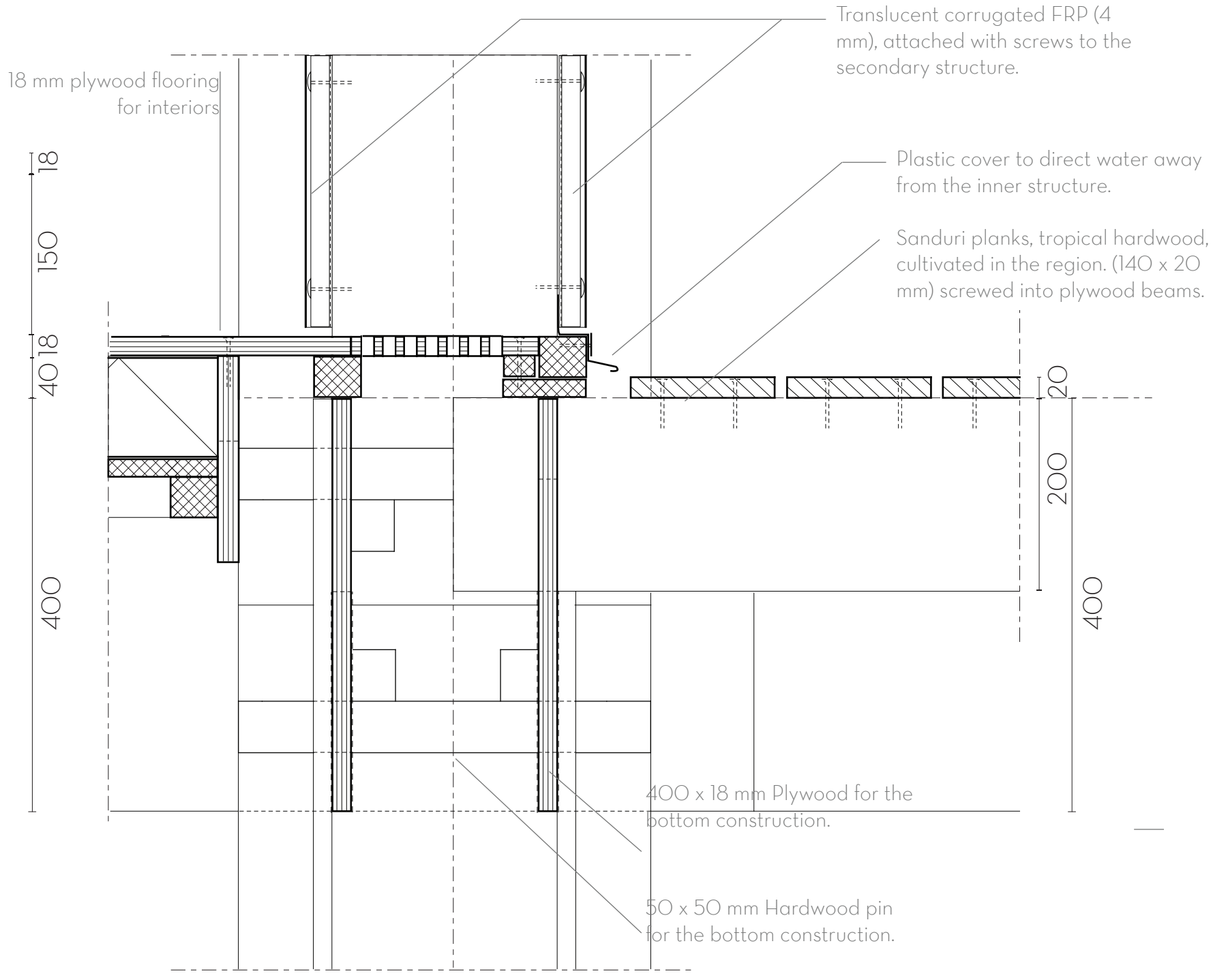
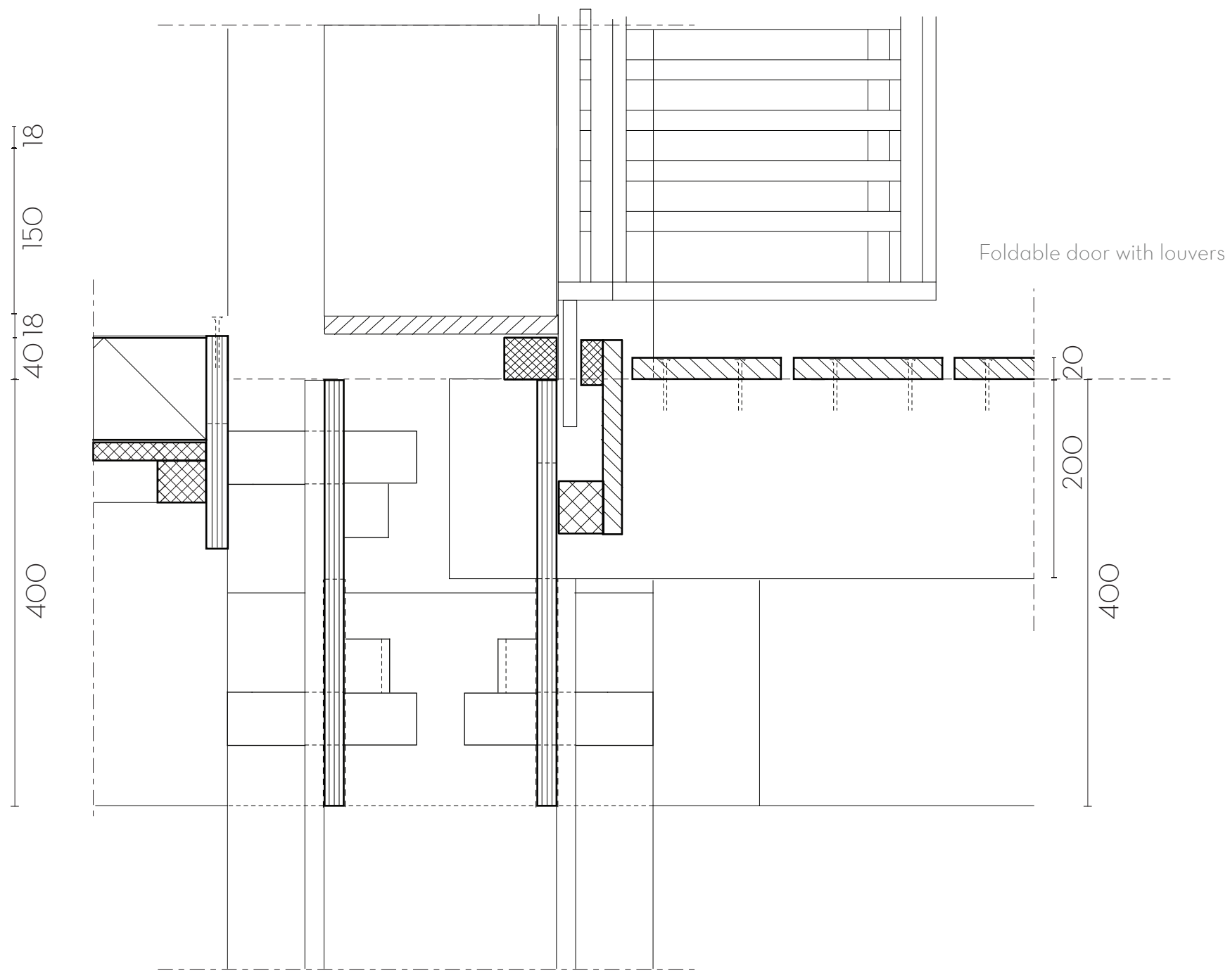
ROOF TOP DETAIL

1:5



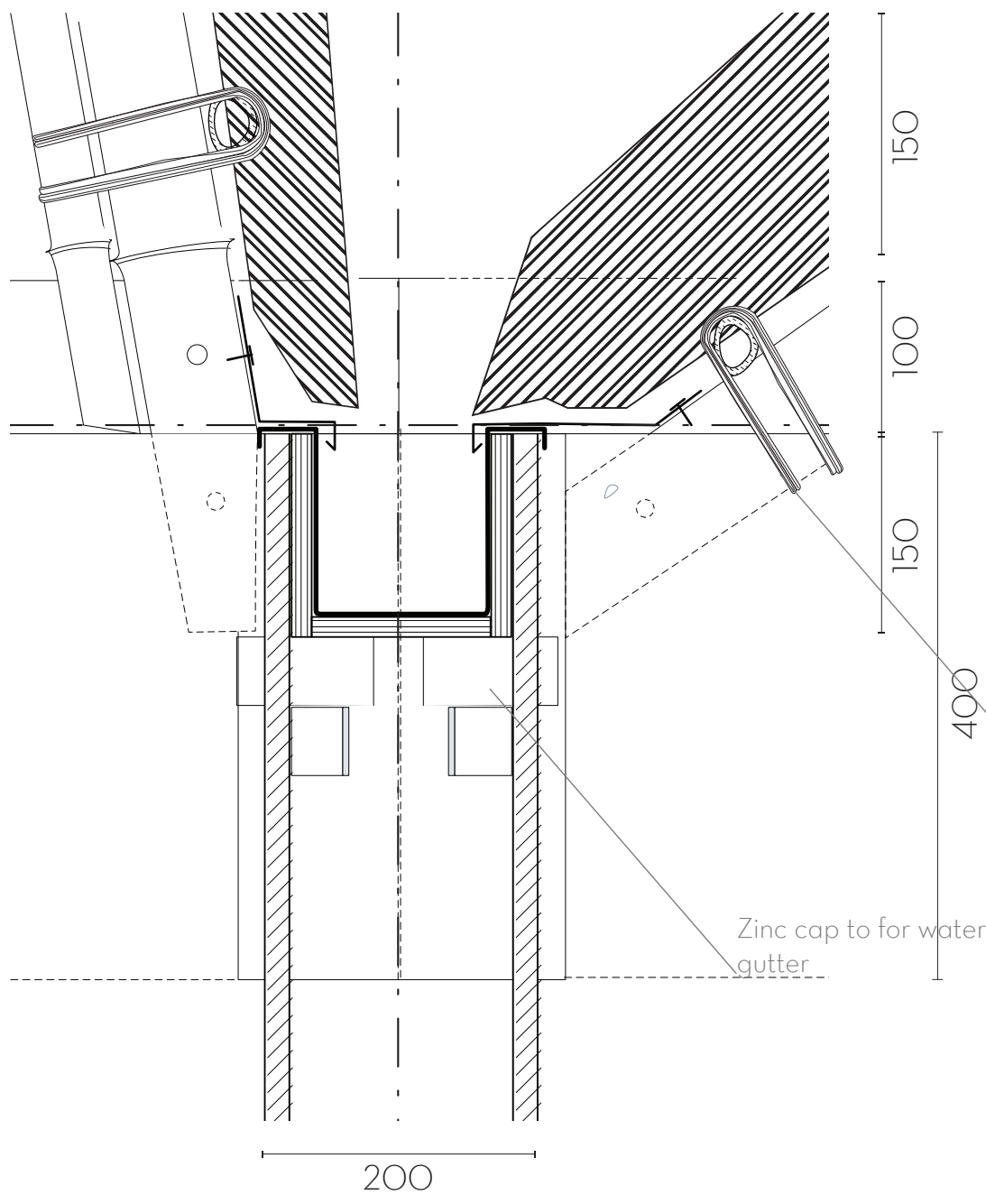
ROOF TO SYSTEM DETAIL

1:5



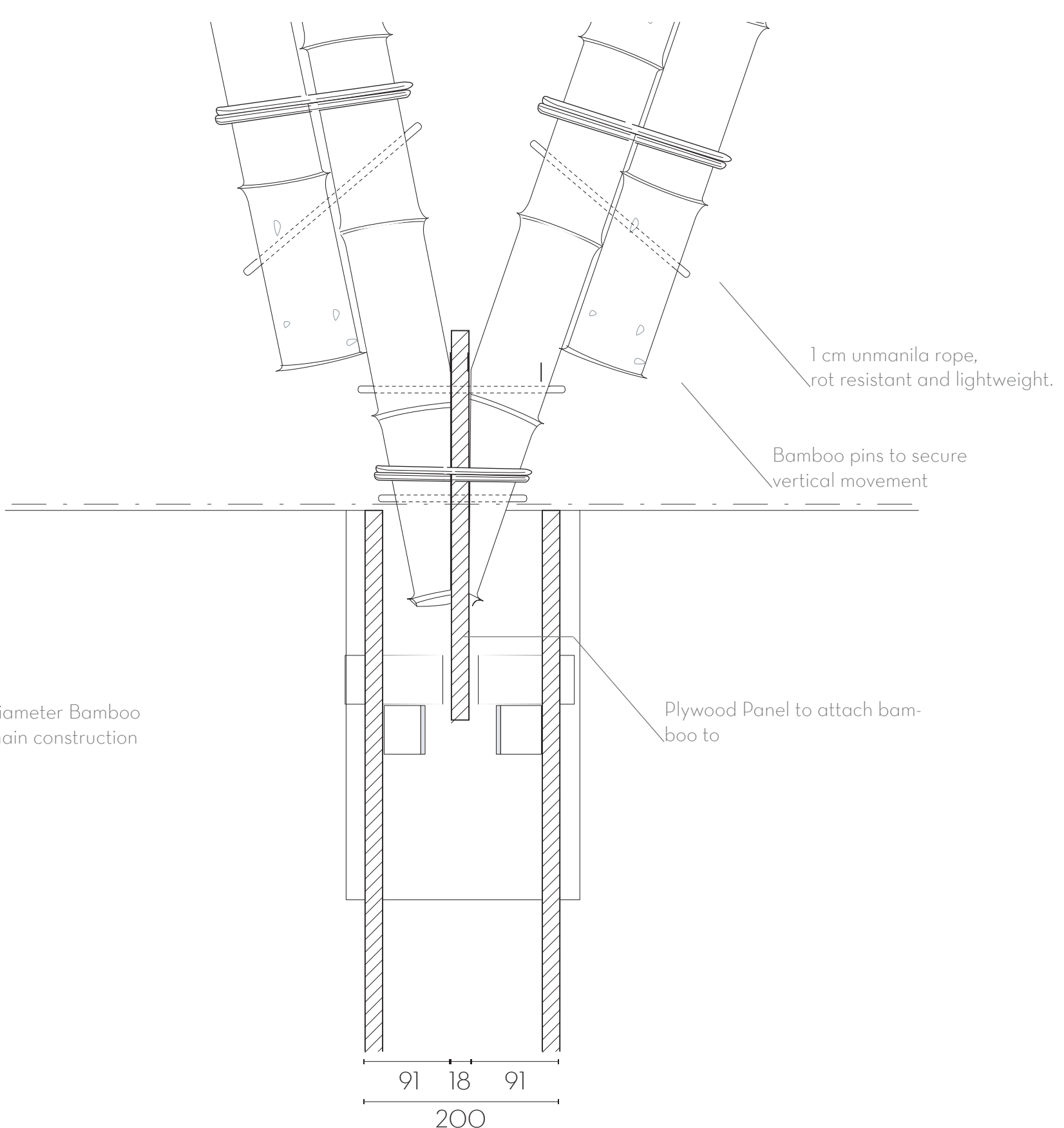
WALL TO FLOOR

-1:5



100 mm Diameter Bamboo poles for main construction

Zinc cap to for waterproof gutter



1 cm unmanila rope, rot resistant and lightweight.

Bamboo pins to secure vertical movement

Plywood Panel to attach bamboo to

CONNECTION DETAIL

-1:5