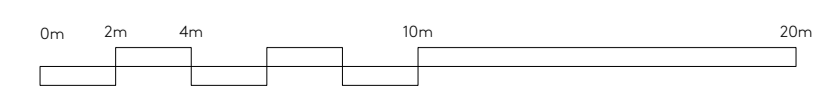
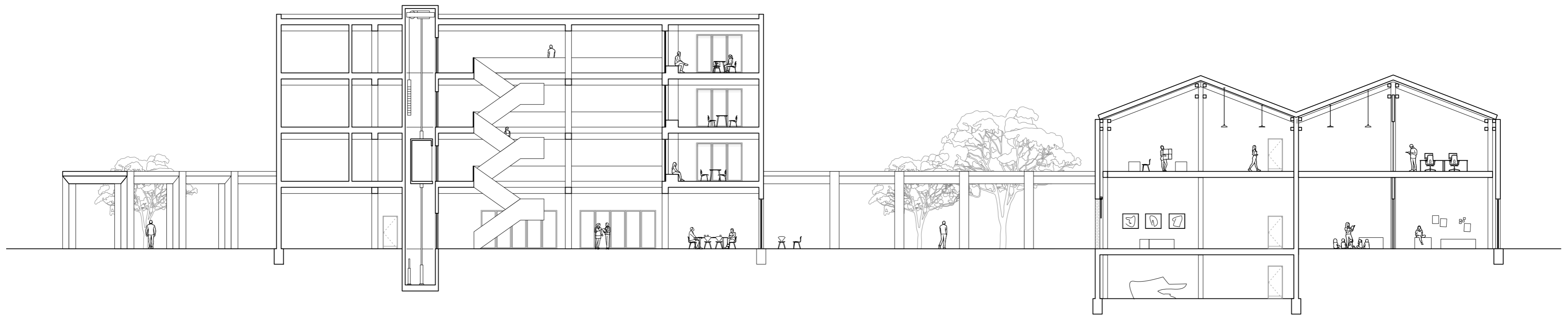


- 1 The oval public space
- 2 Community Arts centre
 - 2.1 Exhibition Space
 - 2.2 Flexible studio
- 3 Creative public space
- 4 Co-Living
 - 4.1 Collaborative office space
 - 4.2 Laundry room
 - 4.3 Adaptive space
 - 4.4 Lobby
 - 4.5 Services
- 5 Residential square
- 6 Social Housing
 - 6.1 Nursery
 - 6.2 Lobby
 - 6.3 Adaptive space
 - 6.4 Services
- 7 Community garden
- 8 Adaptive community space
- 9 Existing heritage building
- 10 Health and justice centre
 - 10.1 Adaptive space
- 11 Sunken public square
 - 11.1 outdoor amphitheatre steps
- 12 Commercial street
 - 12.1 Adaptive commercial units
 - 12.2 Market space

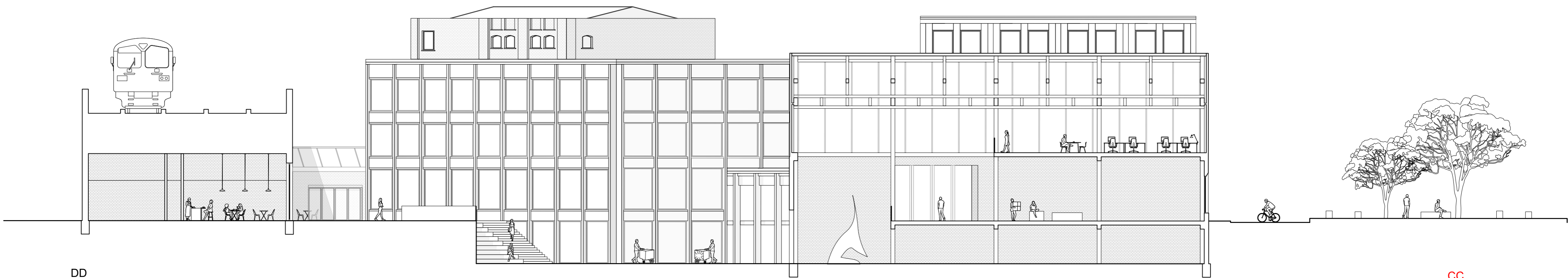


Ground Floor Plan
1:200

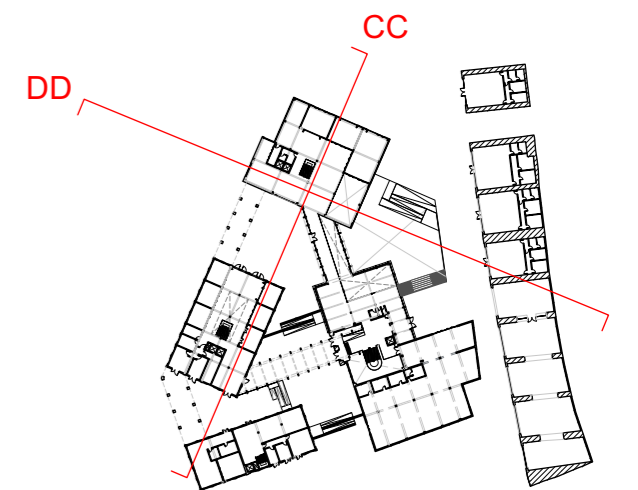




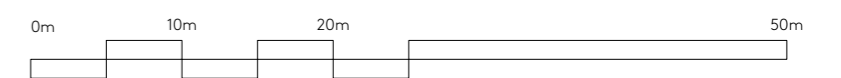
CC

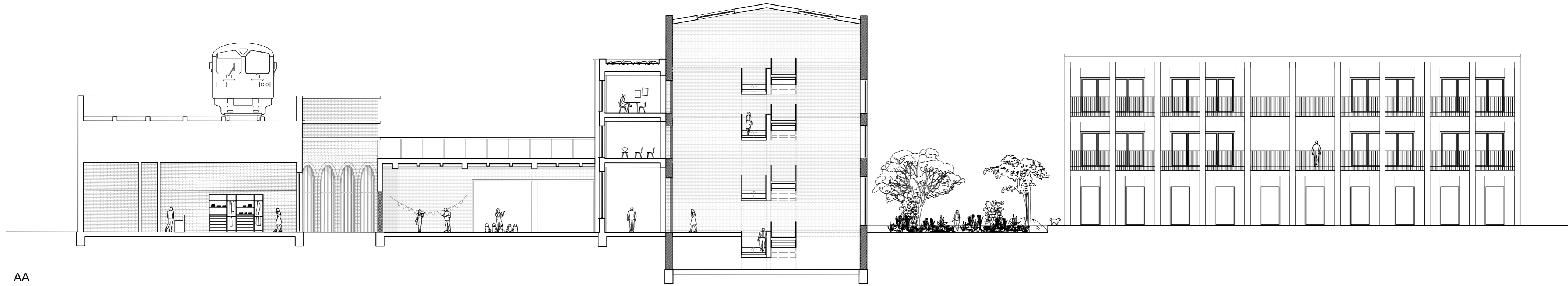


DD

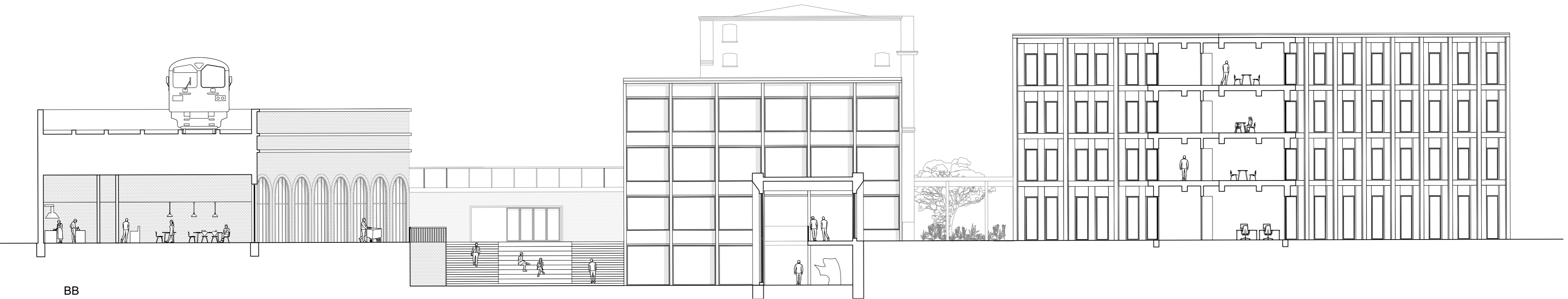


1:200

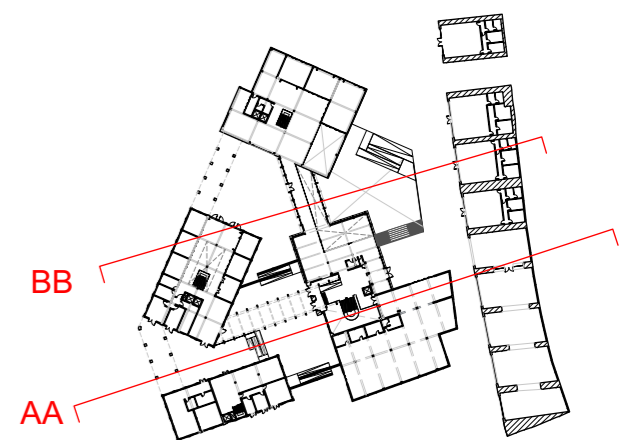




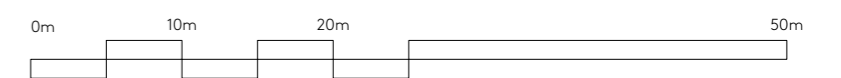
AA

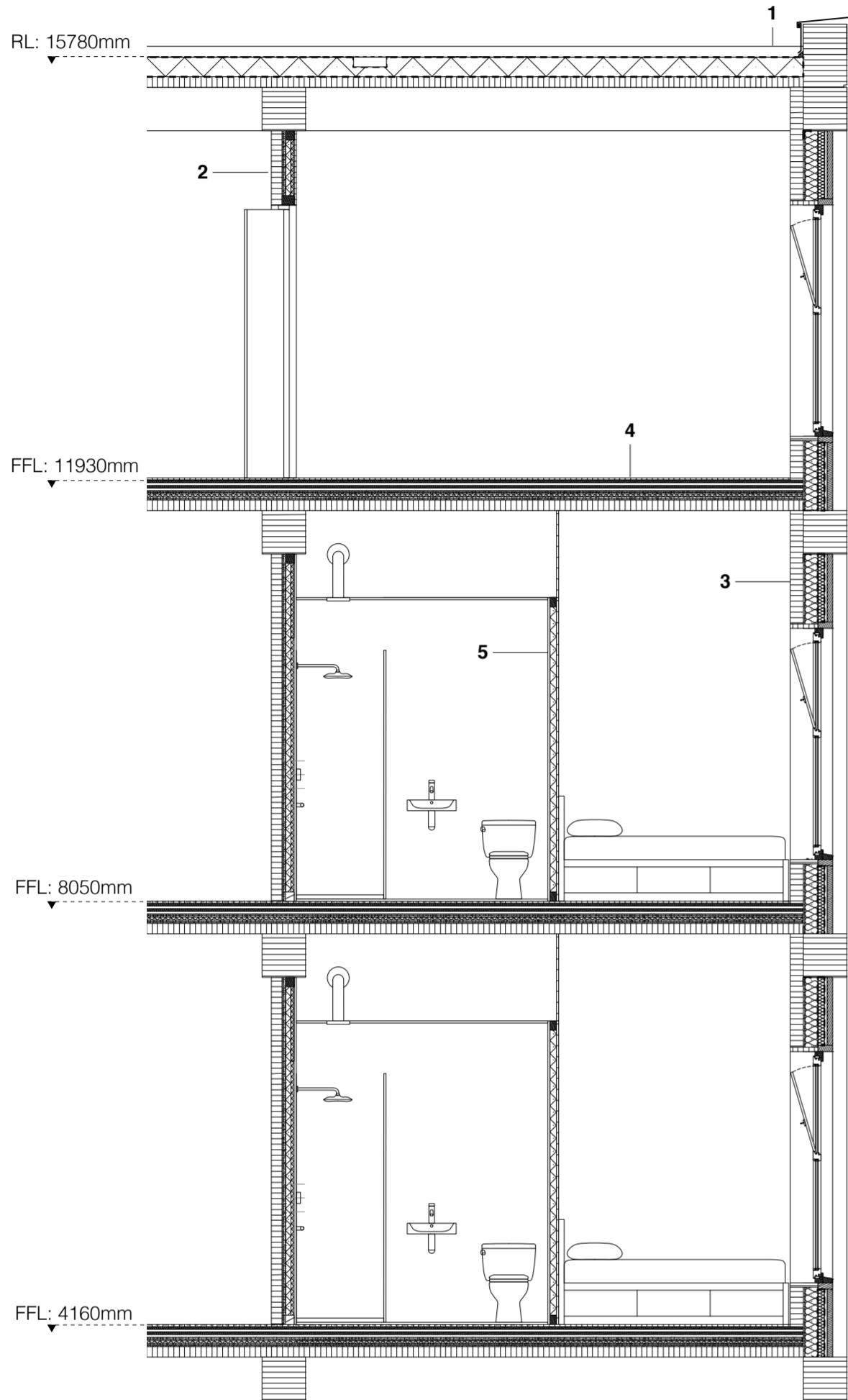
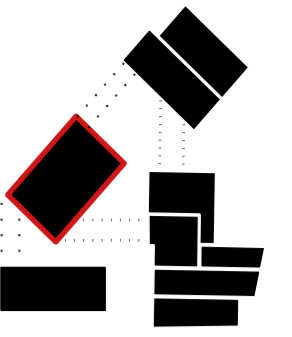


BB

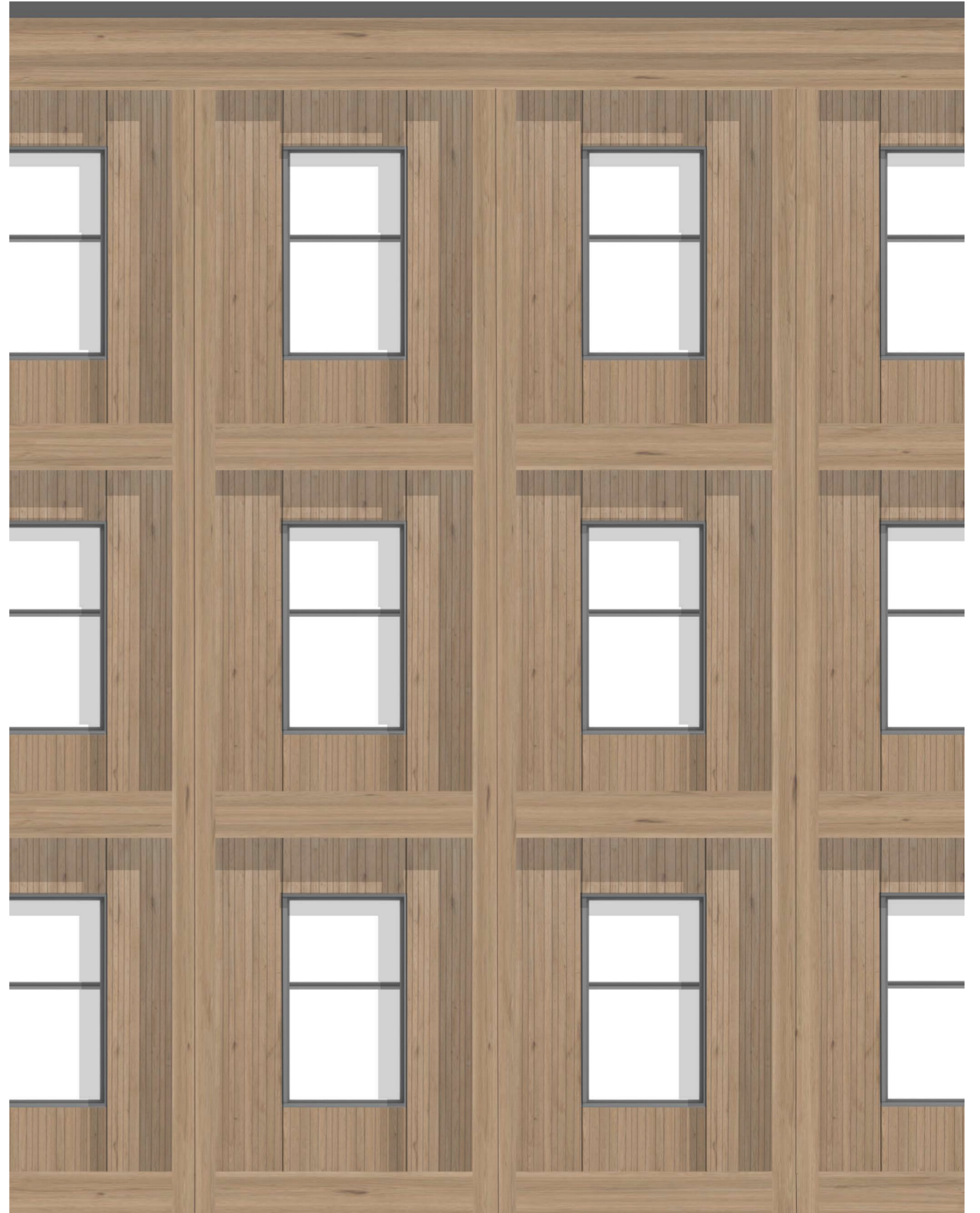


1:200

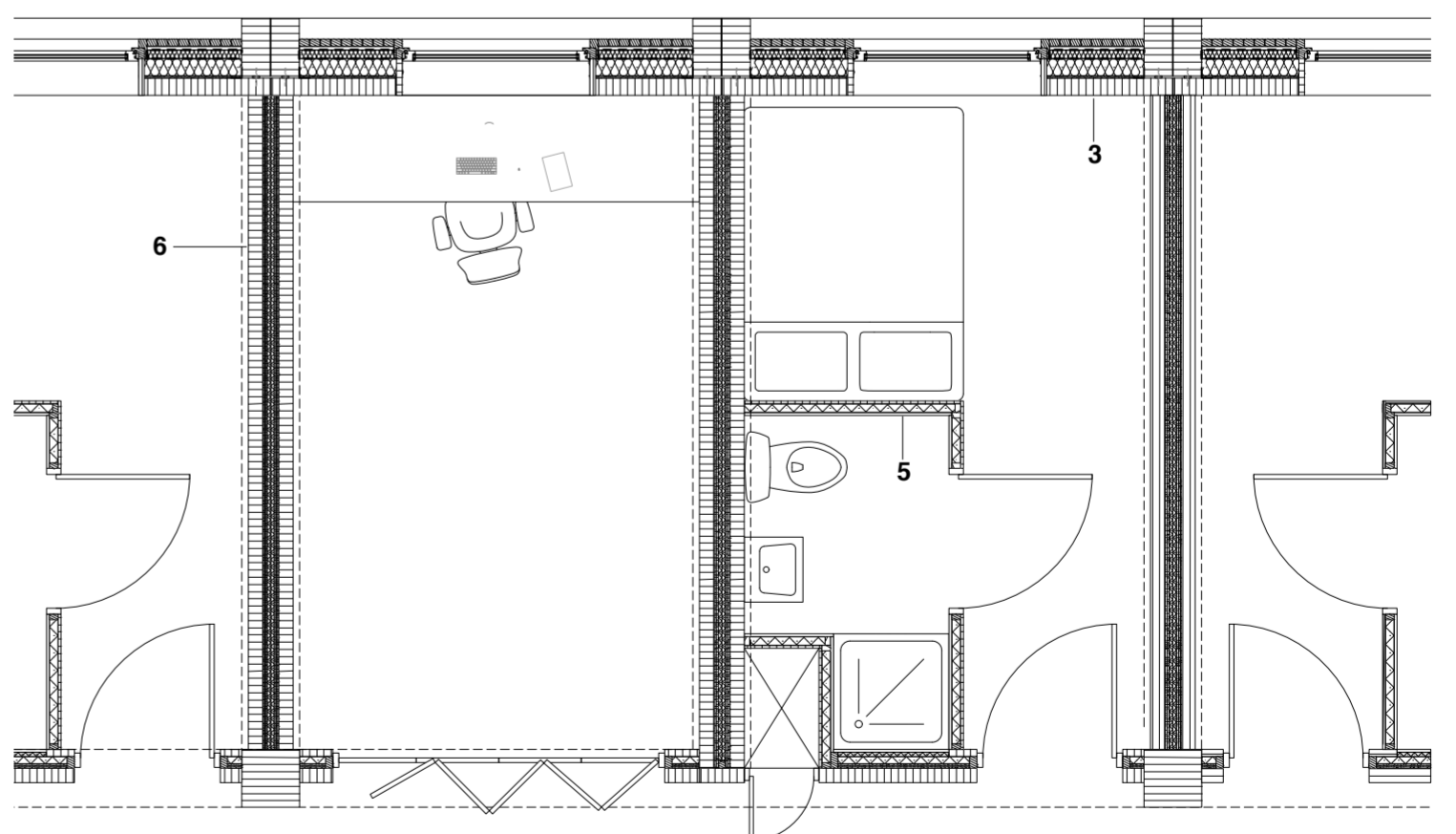




Vertical Detail

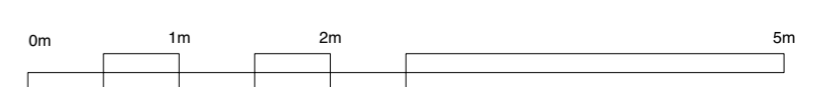


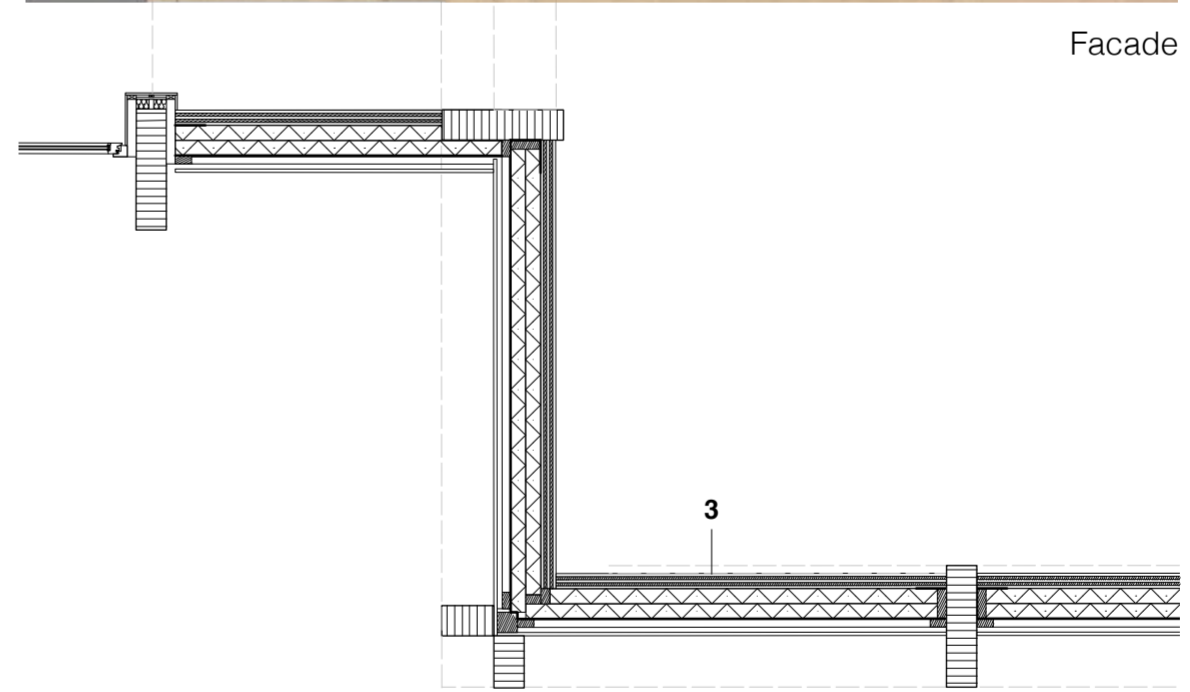
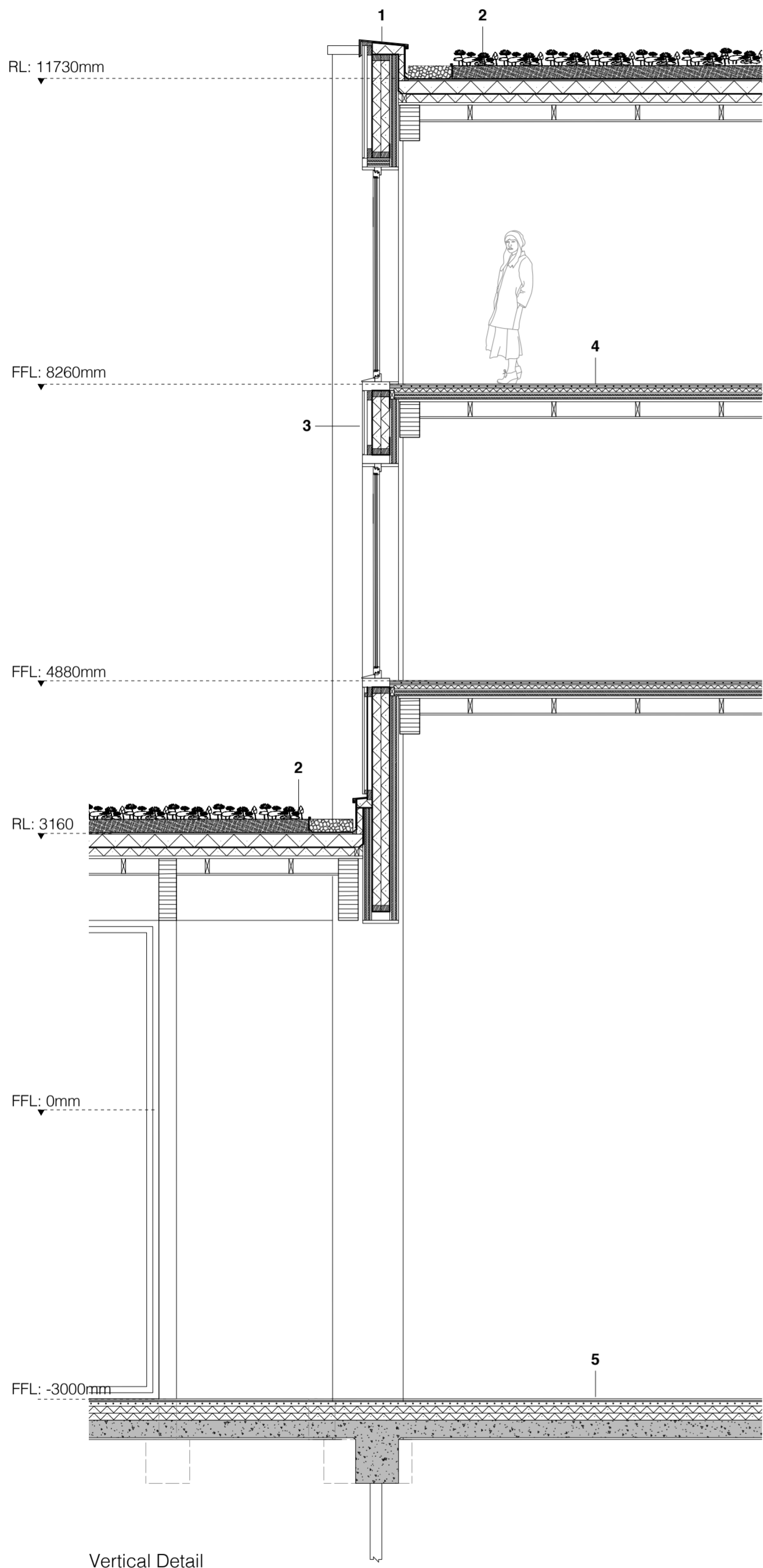
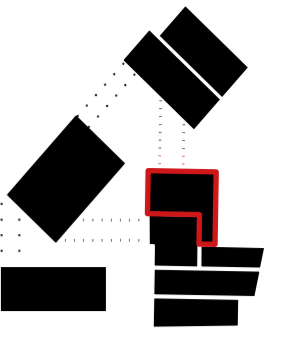
Facade



Horizontal Detail

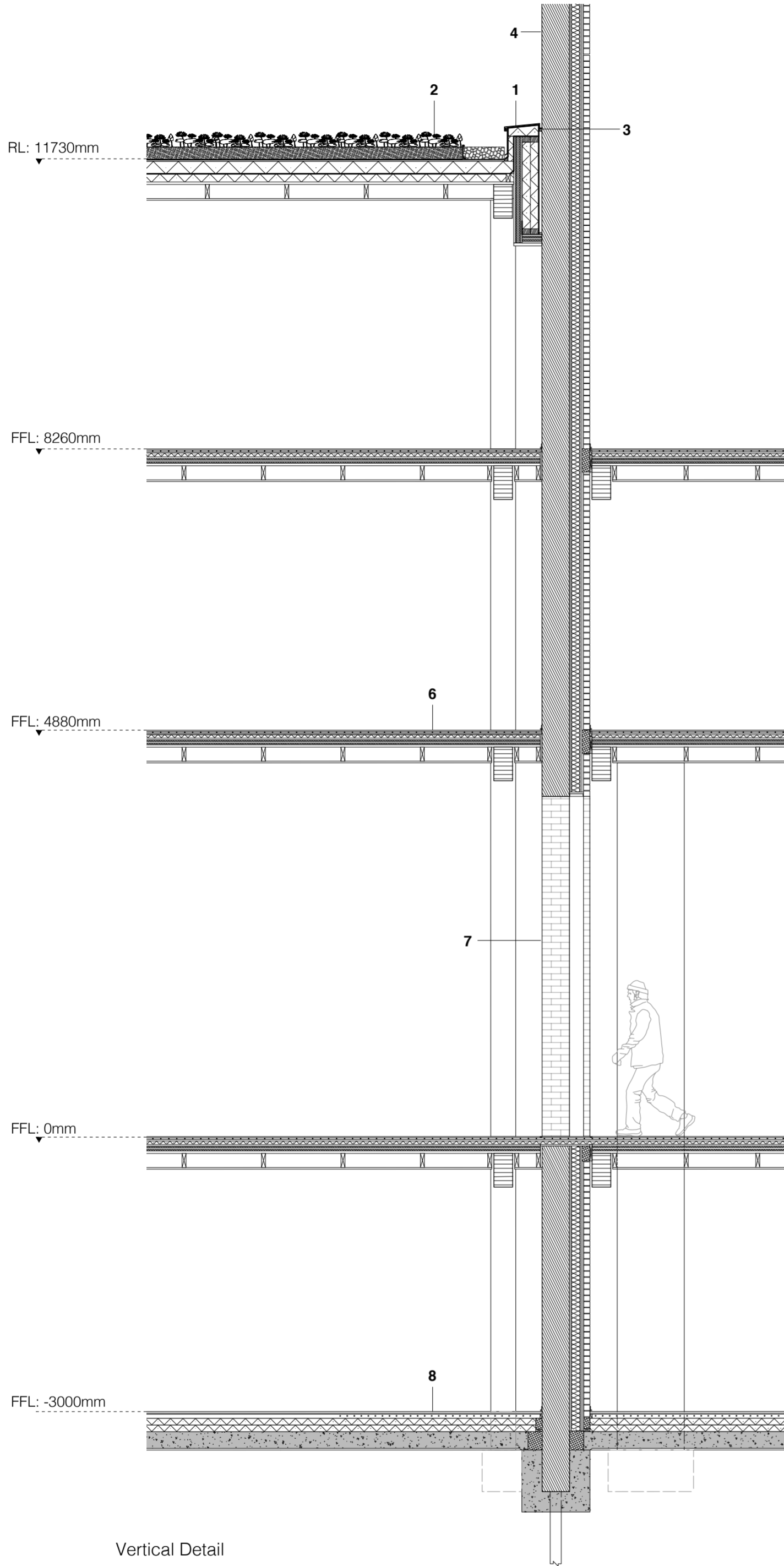
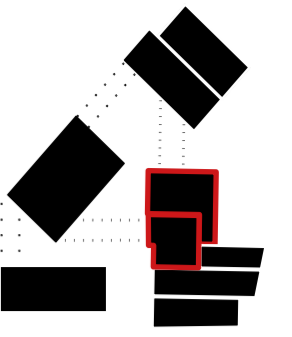
- | | |
|--|--|
| <p>1. Sheet metal parapet cap,
Sealing layer,
Rigid insulation,
Vapour-retarding layer,
Stacked plank timber</p> <p>2. Stacked plank timber
2x Gypsum fibreboard
Mineral wool insulation
Stacked plank timber</p> <p>3. Timber facade,
Battens,
Ventilation cavity,
Mineral wool insulation,
Gypsum fibreboard,
Stacked plank timber</p> | <p>4. Parquet,
Cross-laminated timber,
2x Gypsum fibreboard
Rigid insulation
2x Gypsum fibreboard
Stacked plank timber</p> <p>5. Tile,
Rigid insulation,
Gypsum fibreboard</p> <p>6. Stacked plank timber
2x Gypsum fibreboard
Mineral wool insulation
2x Gypsum fibreboard
Stacked plank timber</p> |
|--|--|





- 1. Sheet metal parapet cap,
Rigid insulation,
Cross-laminated timber
- 2. Gravel edge channel,
Separation profile,
Erosion fabric,
Soil,
Drainage board,
Rigid insulation,
Vapour control barrier
- 3. Cross-laminated timber
Rigid insulation,
Timber facade
- 4. Timber flooring,
Screed with underfloor heating,
Rigid insulation,
Cross-laminated timber,
Timber packers,
Service void
- 5. Timber flooring,
Screed with underfloor heating,
Rigid insulation,
Structural reinforced concrete

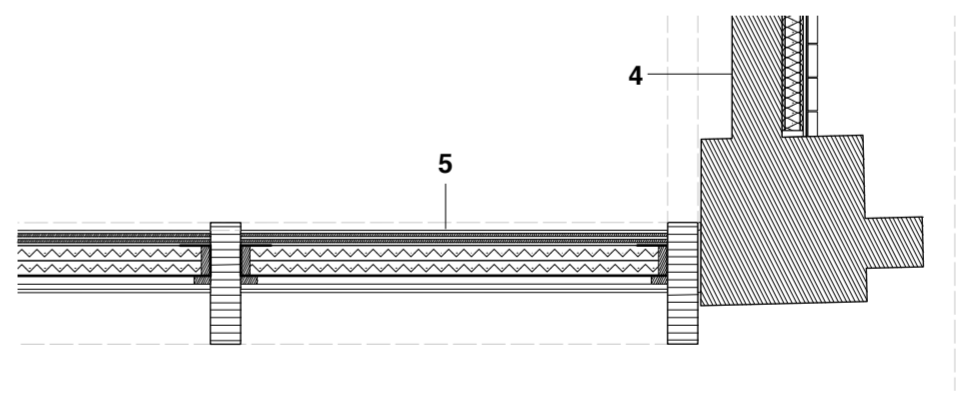




Vertical Detail



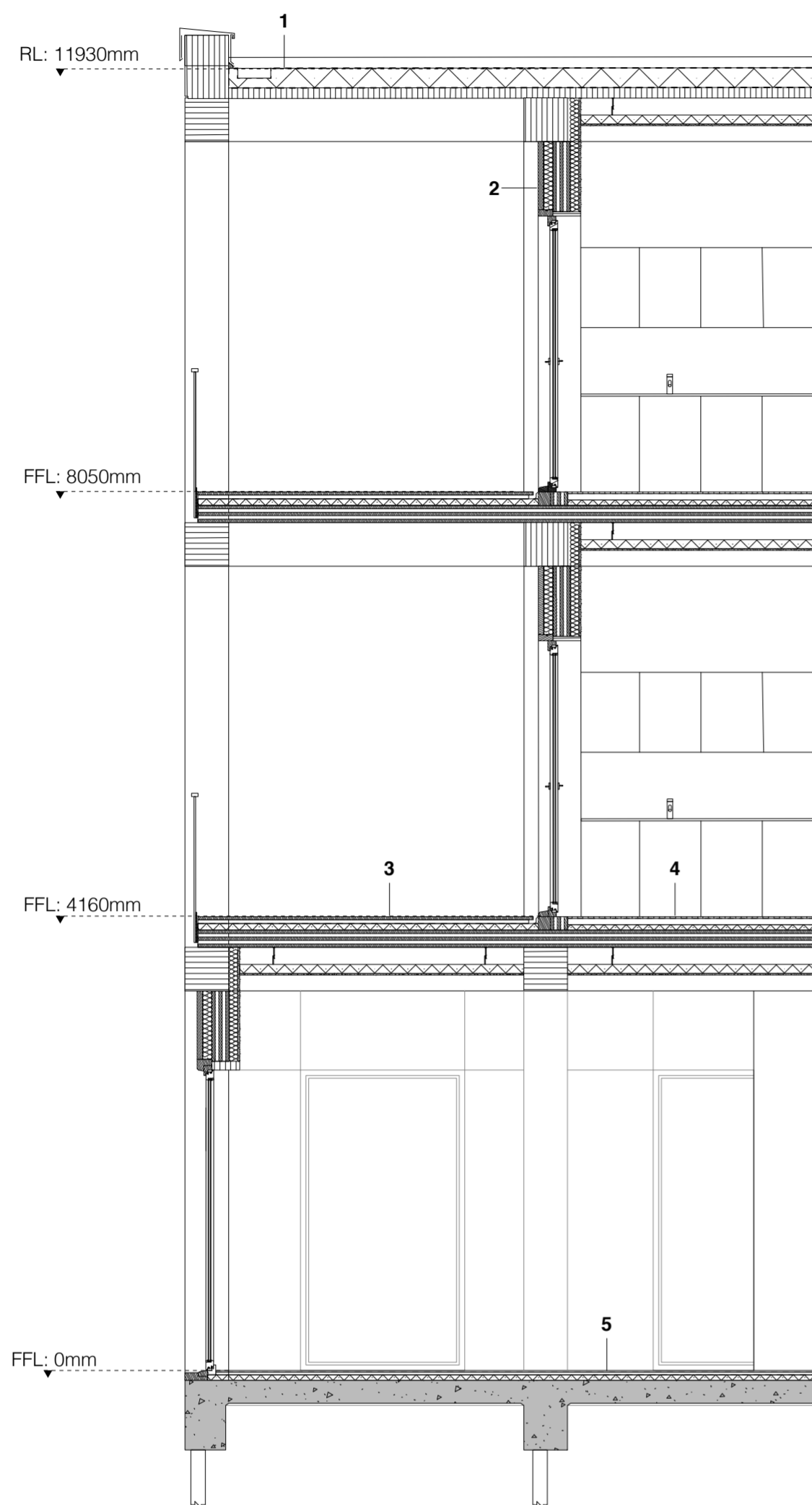
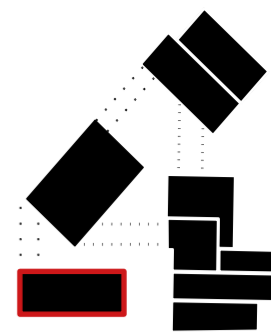
Facade



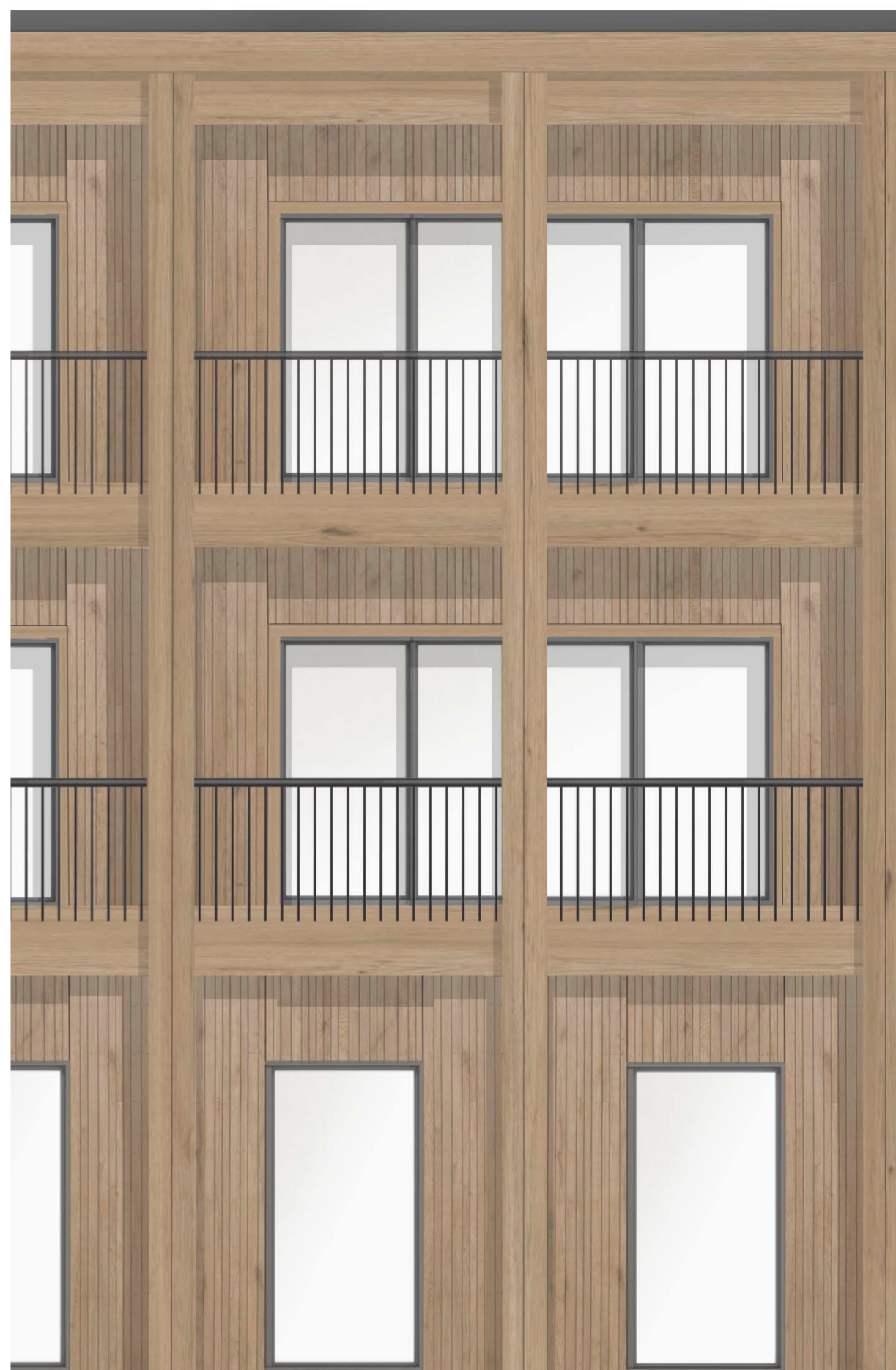
Horizontal Detail

- | | |
|---|--|
| <ul style="list-style-type: none"> 1. Sheet metal parapet cap,
Rigid insulation,
Cross-laminated timber 2. Gravel edge channel,
Separation profile,
Erosion fabric,
Soil,
Drainage board,
Rigid insulation,
Vapour control barrier 3. Movement joint 4. Existing structural masonry wall,
Timber frame,
Cellulose insulation,
Acoustic air cavity,
New masonry wall | <ul style="list-style-type: none"> 5. Cross-laminated timber,
Rigid insulation,
Timber facade 6. Internal existing masonry wall,
Cross-laminated timber,
Timber packers,
Service void 7. Internal existing masonry wall,
Cross-laminated timber,
New masonry wall 8. Timber flooring,
Screed with underfloor heating,
Rigid insulation,
Structural reinforced concrete |
|---|--|

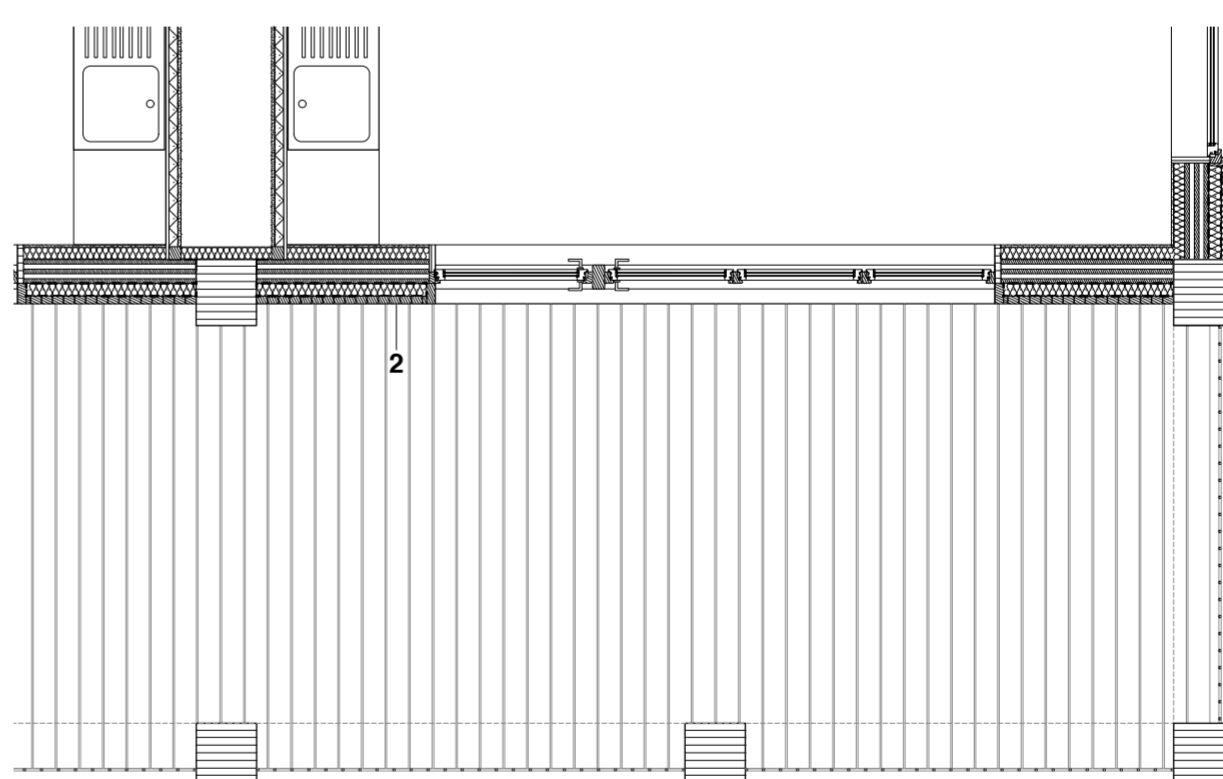




Vertical Detail



Facade



Horizontal Detail

- 1. Sheet metal parapet cap,
Sealing layer,
Rigid insulation,
Vapour-retarding layer,
Stacked plank timber
- 2. Stacked plank timber
Mineral wool insulation
Cross-laminated timber
Thermal insulation
Gypsum fibreboard
- 3. Timber floor board,
Battens,
Sealant layer,
Thermal insulation,
Thermal insulation,
Cross-laminated timber

- 4. Parquet,
Separation layer
Screed,
Impact sound proofing,
Cross-laminated timber,
Hung ceiling,
Thermal insulation,
Gypsum board
- 5. Timber flooring,
Screed with underfloor heating,
Rigid insulation,
Structural reinforced concrete

