



beverwijk

alkmaar

purmerend

zaandam

haarlem

beach

brettenzone

IJmeer

amsterdam  
centrum

amstel

zuidas

schiphol

arena

almere

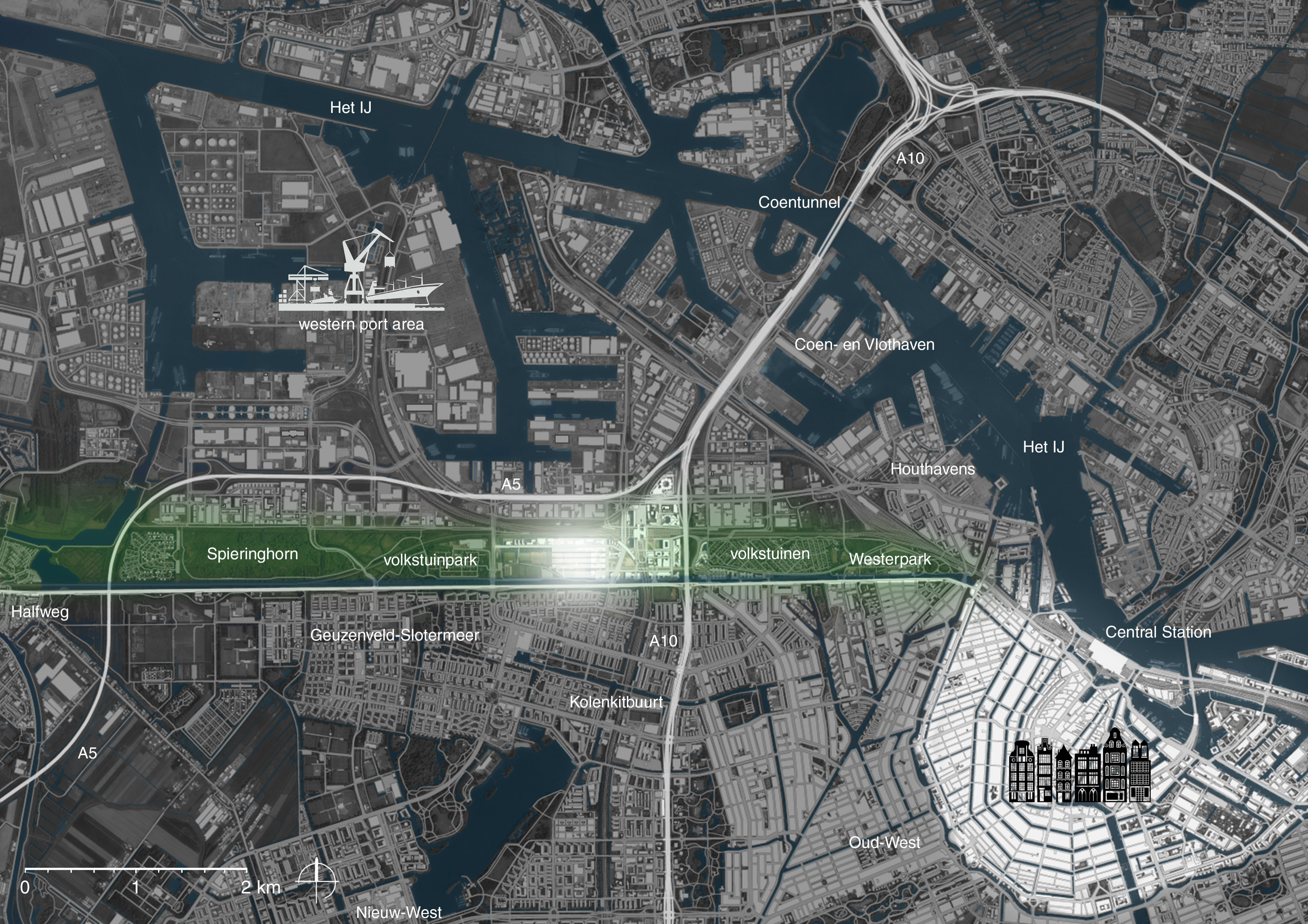
leiden

rotterdam

utrecht

0 1 2 3 4 5 km





Het IJ

A10

Coentunnel



western port area

Coen- en Vlothaven

Het IJ

Houthavens

A5

Spieringhorn

volkstuintuin

volkstuintuin

Westerpark

Halfweg

Geuzenveld-Slotermeer

A10

Central Station

A5

Kolenkitbuurt



Oud-West

0 1 2 km



Nieuw-West



Moezelhaven

Mainhaven

Beringhaven

port industrial area

A5

industrial area

railway

station

A10

station Isolatorweg

industrial area

Naritaweg

Sportpark Spieringhorn

SITE

Sloterdijk village

allotment gardens

Haarlemmertrekvaart

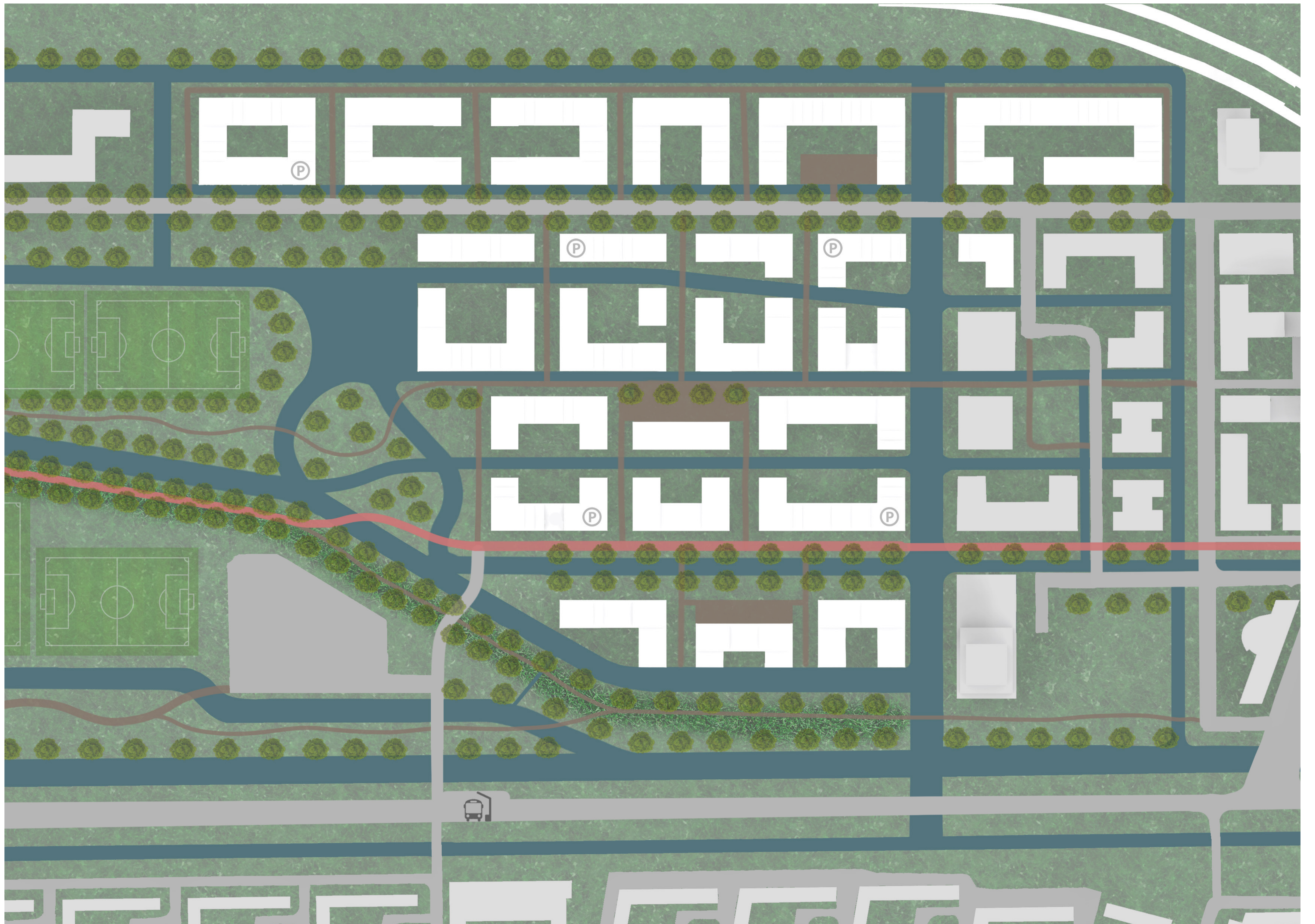
Haarlemmerweg

residential area

A10

residential area









dwelling

minimarket

private outdoor space

café

kitchen

laundry

makerspace

allotment gardens

square

dwelling

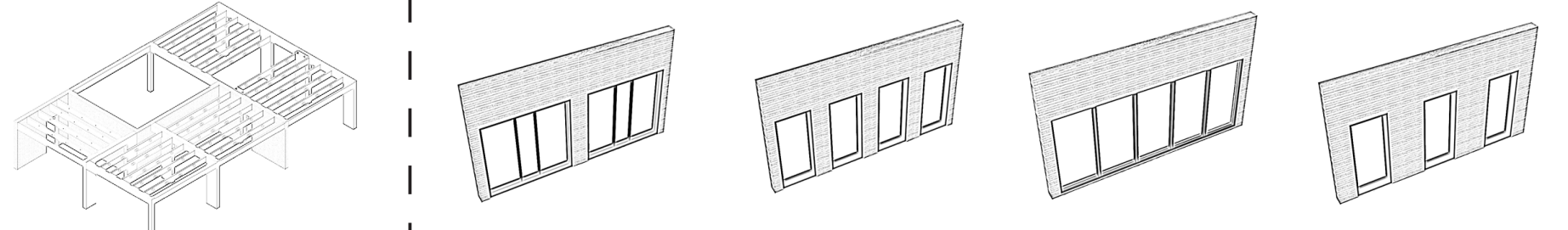
dwelling

IJ-dike

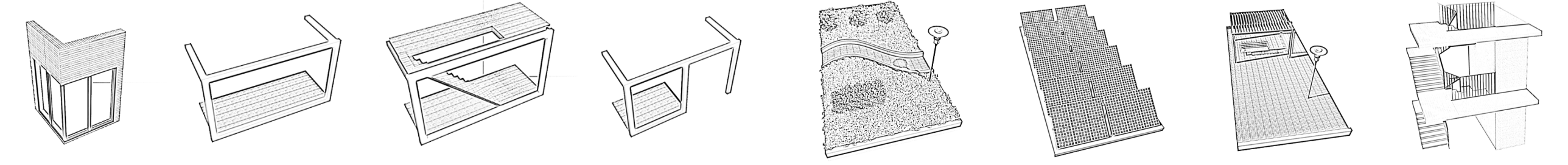
bicycle street



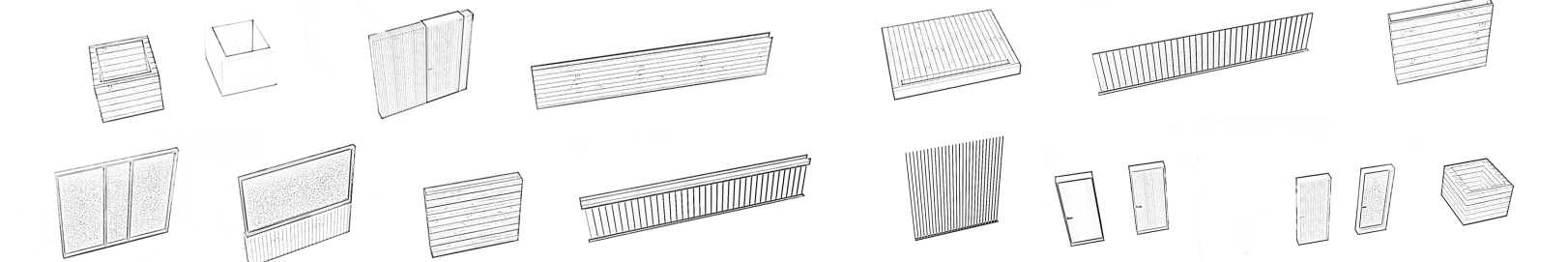
support

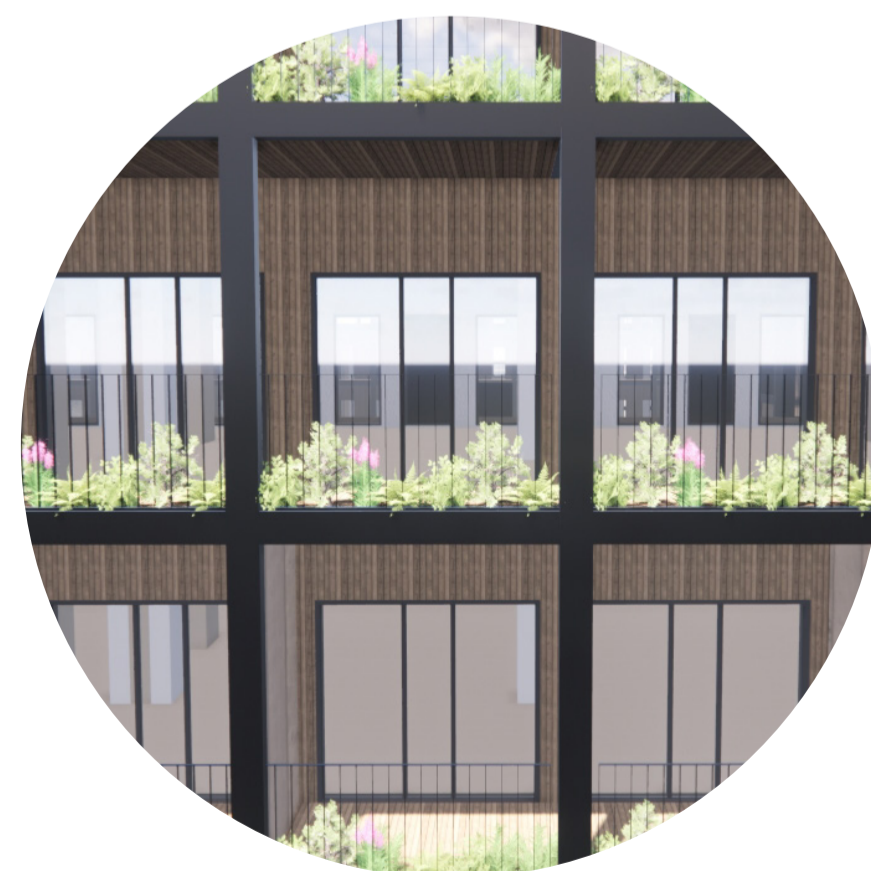
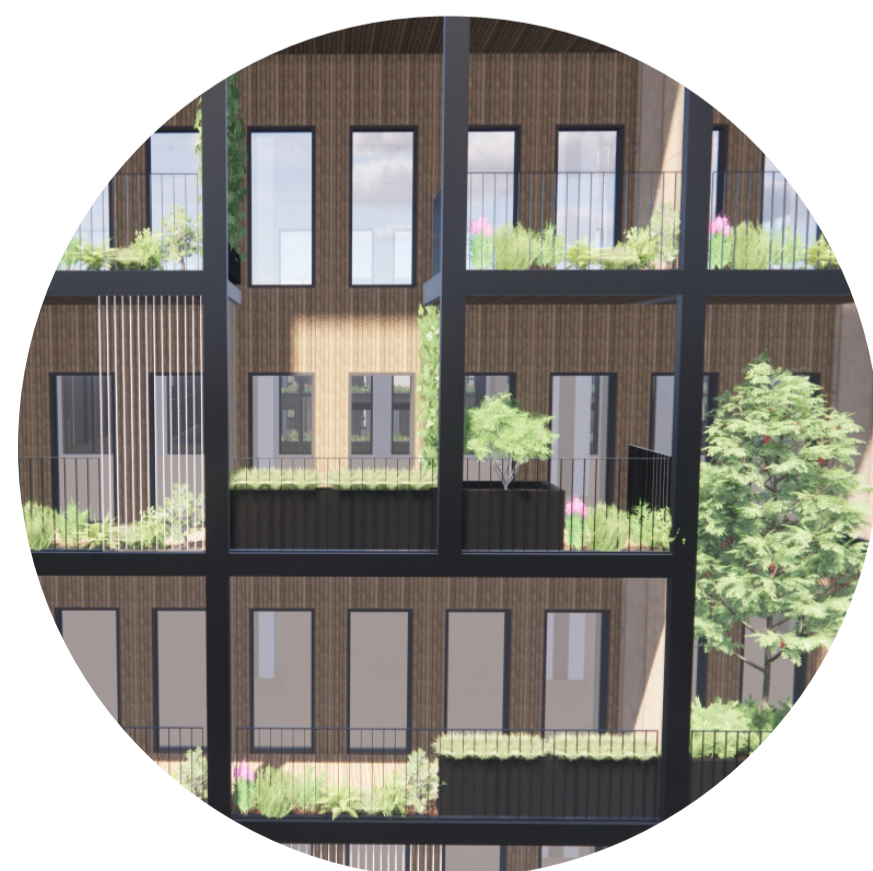
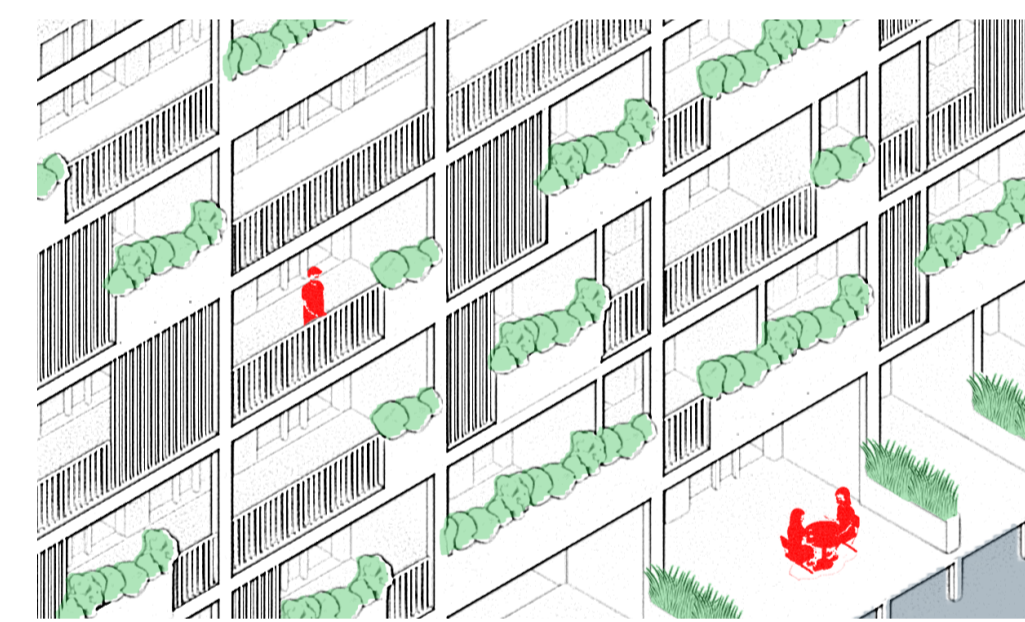
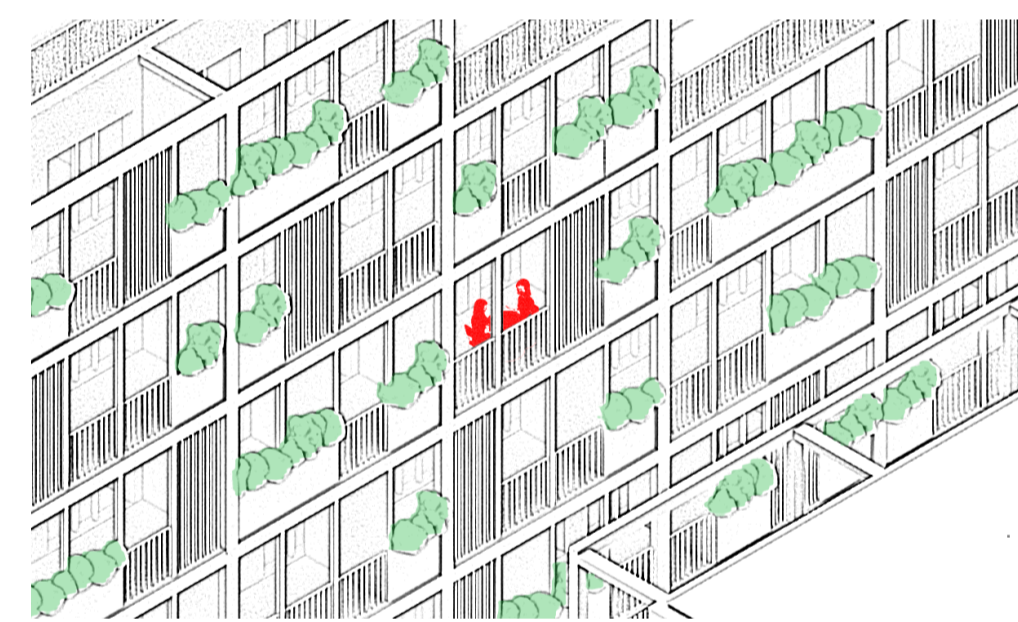
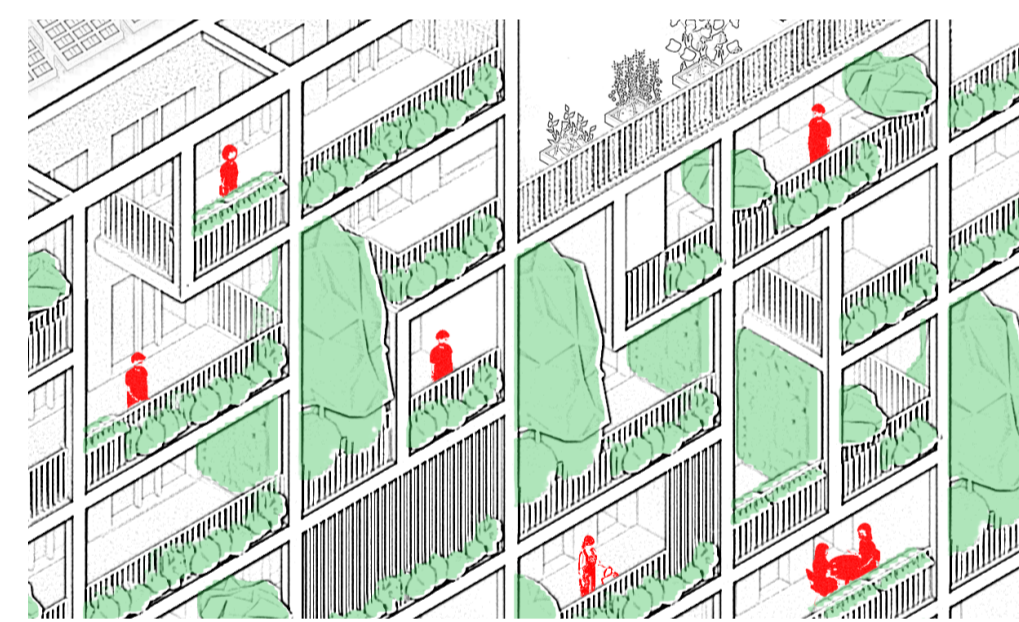
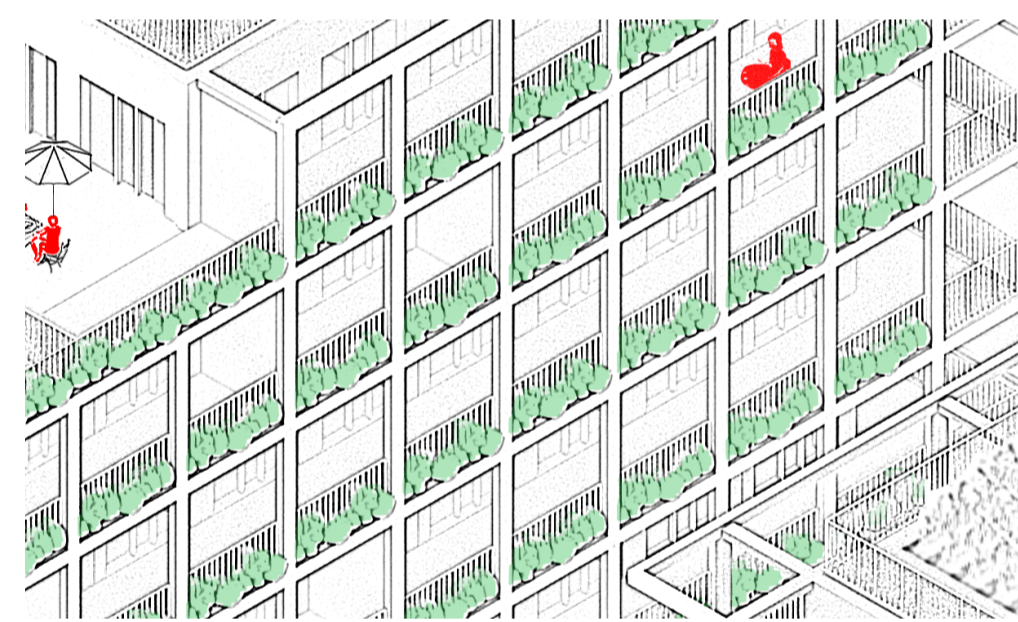
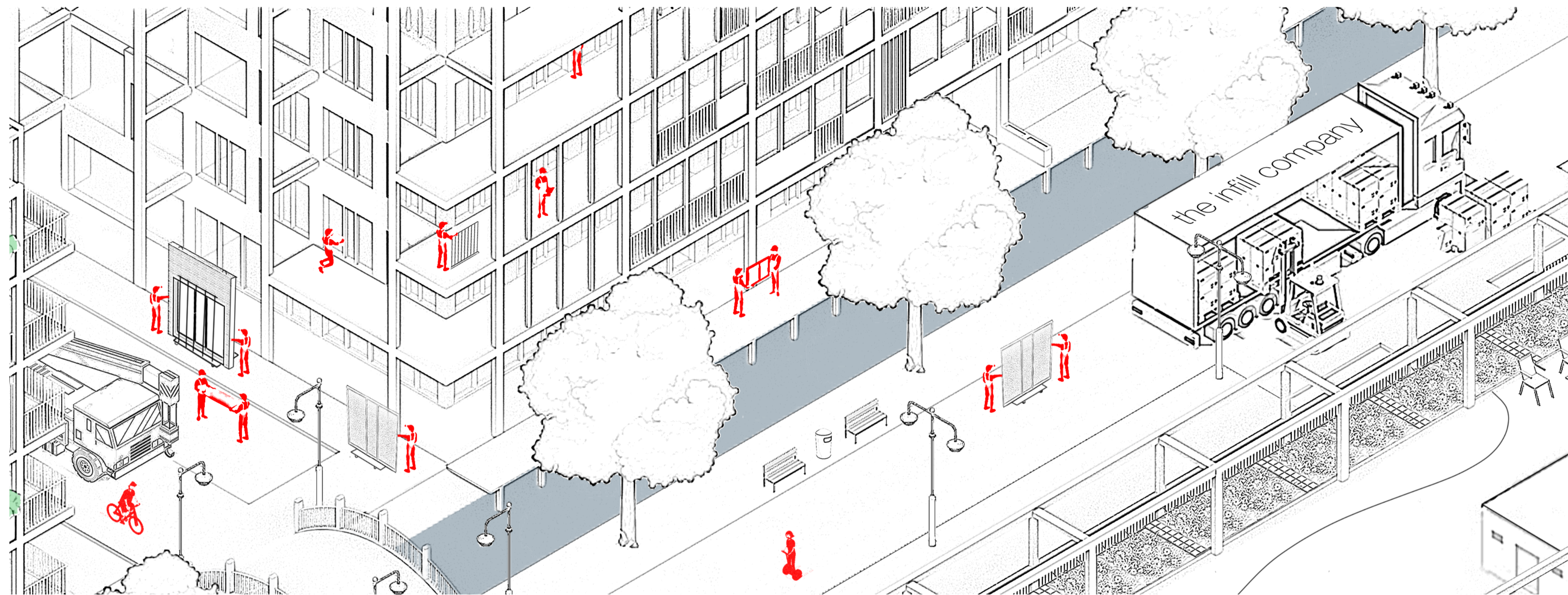


toolbox collective: layer systems

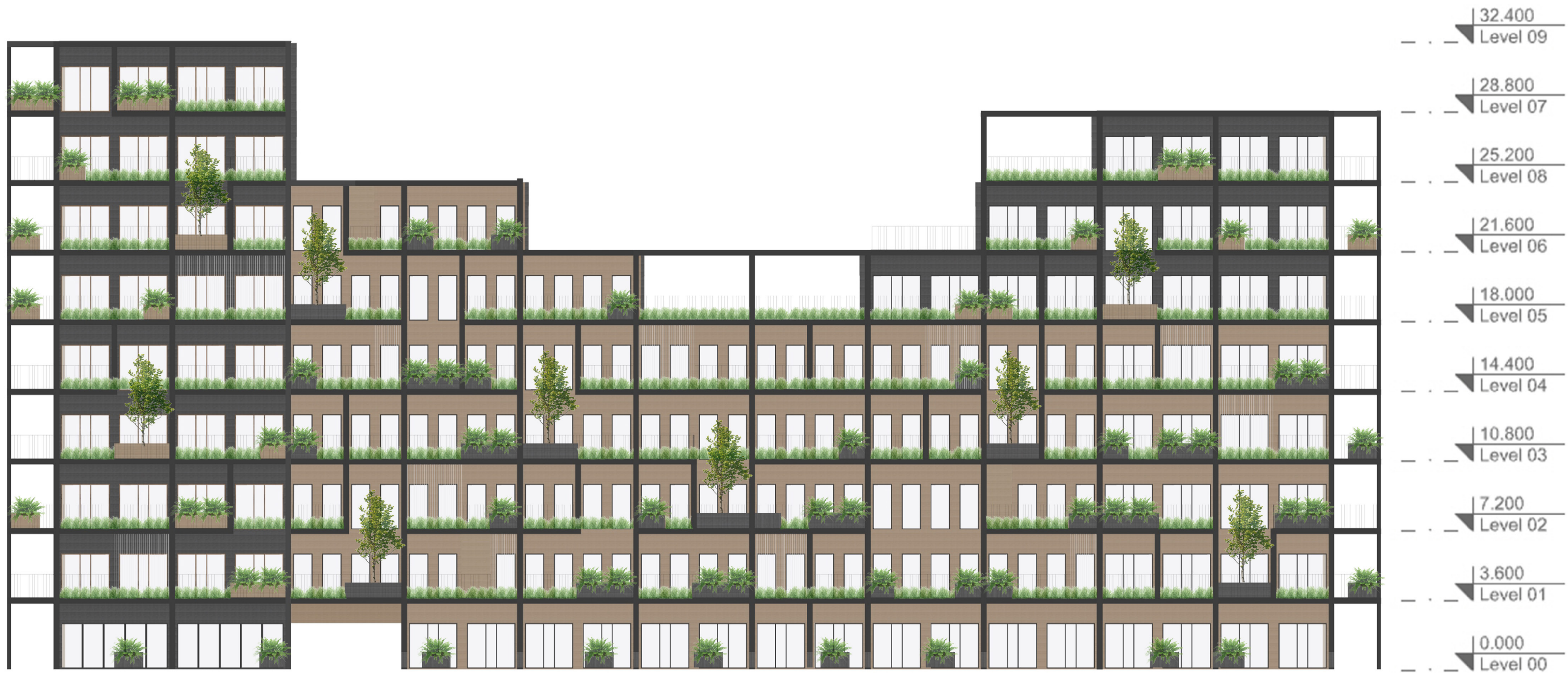


toolbox individual: components & interior













36 m2



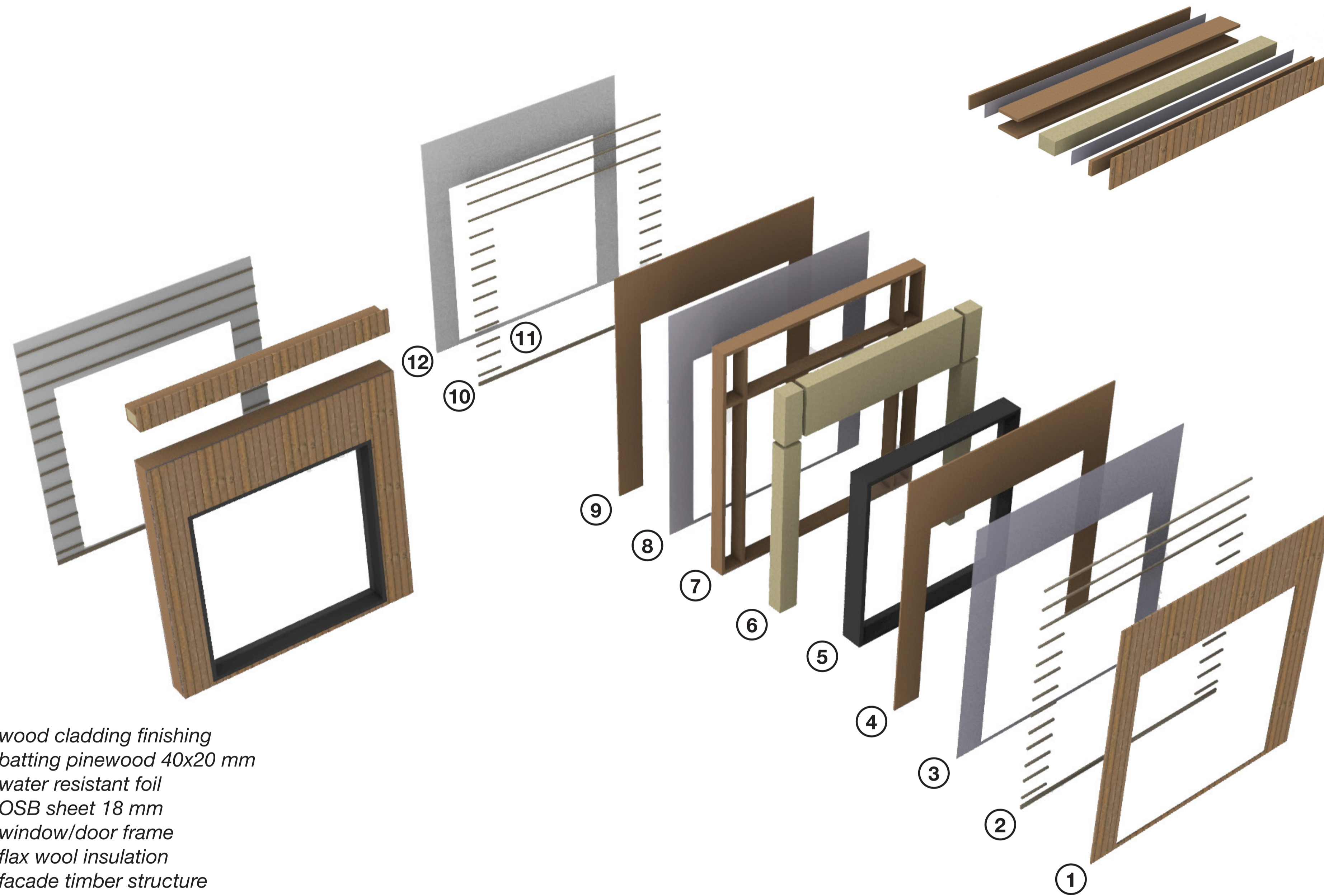
72 m2



108 m2



144 m2



1. wood cladding finishing
2. batting pinewood 40x20 mm
3. water resistant foil
4. OSB sheet 18 mm
5. window/door frame
6. flax wool insulation
7. facade timber structure
8. vapor barrier foil
9. osb sheet
10. vertical batting 40x40
11. installation zone electrical wiring
12. gypsum fiber board

Interior finishing: SCENERY

- Vertical battening pinewood 40x40 mm
- Installation zone for electrical wiring 40 mm
- Gypsum fiber board Fermacell 10 mm
- Wall finishing

Structure: SUPPORT

- LVL sheet 25 mm
- LVL beam 75x450 mm
- Sheep wool acoustic insulation 220 mm
- LVL sheet 25 mm

Interior floor system: SCENERY

- Floor finishing ca. 15 mm
- VarioComp filling compound
- VarioProFile pipe 11.6x1,5 Laser
- VarioComp panels 600x1000 mm
- PE construction foil
- Variotherm XPS panel 20 mm
- Instalation zone for electrical wiring 40 mm
- Grid of support ridges 40 mm (installation zone)

Interior ceiling system: SCENERY

- Horizontal battening 40 mm (installation zone)
- Instalation zone for electrical wiring 40 mm
- Gypsum fiber board Fermacell 10 mm
- Ceiling finishing

Facade system: SKIN

- Velfac 200 Energy window with triple glazing

Balcony floor system: ACCESS & OUTDOOR SPACE

- Floor timber finishing
- Installation zone for irrigation plants
- Timber beams 50x265 mm with 60 mm holes (spacing 1000 mm) for irrigation pipes
- Ceiling timber finishing

Connection components: SKIN

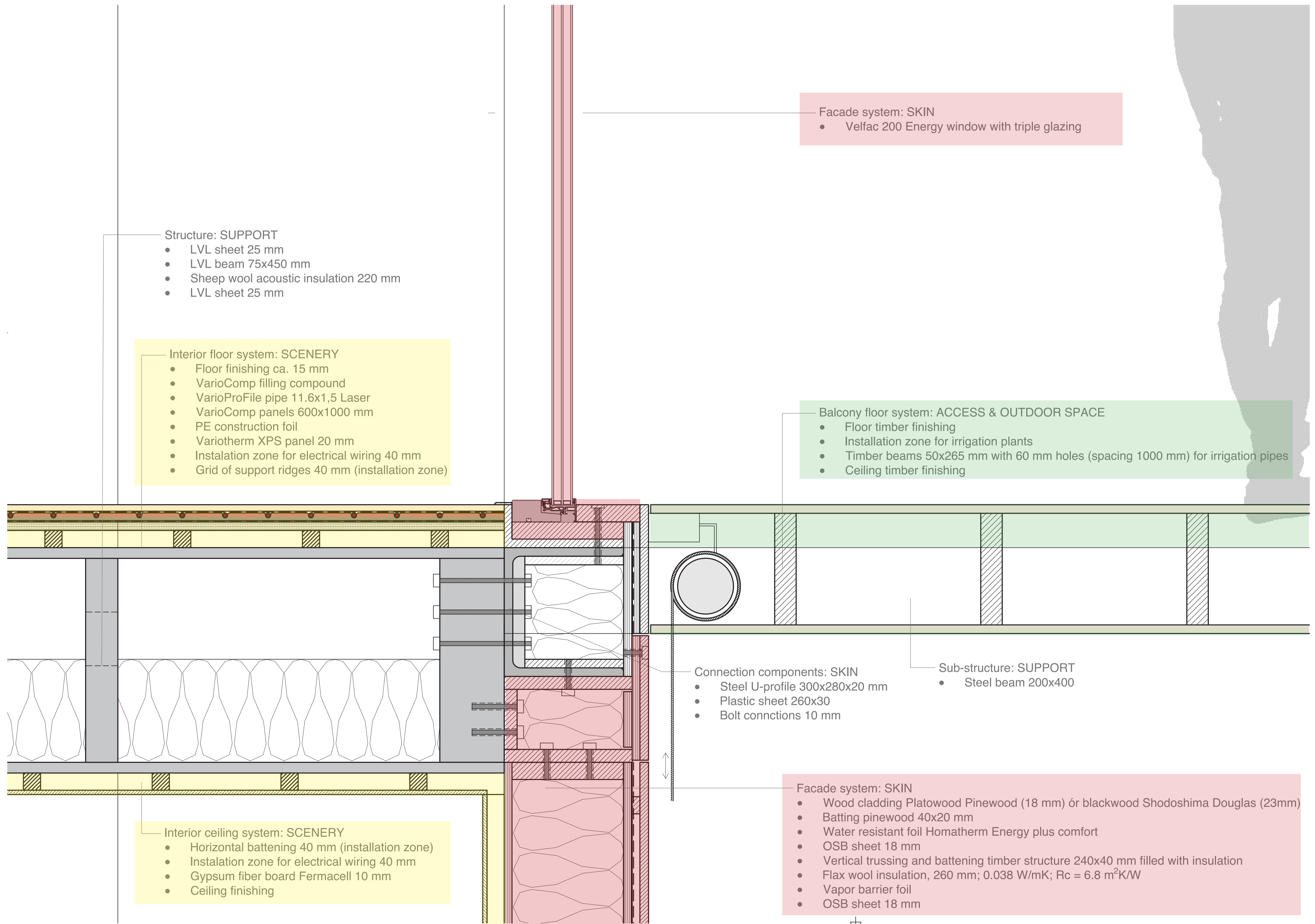
- Steel U-profile 300x280x20 mm
- Plastic sheet 260x30
- Bolt connctions 10 mm

Sub-structure: SUPPORT

- Steel beam 200x400

Facade system: SKIN

- Wood cladding Platowood Pinewood (18 mm) ór blackwood Shodoshima Douglas (23mm)
- Battening pinewood 40x20 mm
- Water resistant foil Homatherm Energy plus comfort
- OSB sheet 18 mm
- Vertical trussing and battening timber structure 240x40 mm filled with insulation
- Flax wool insulation, 260 mm; 0.038 W/mK; Rc = 6.8 m<sup>2</sup>K/W
- Vapor barrier foil
- OSB sheet 18 mm



Structure: SUPPORT

- LVL sheet 25 mm
- LVL beam 75x450 mm
- Sheep wool acoustic insulation 220 mm
- LVL sheet 25 mm

Interior floor system: SCENERY

- Floor finishing ca. 15 mm
- VarioComp filling compound
- VarioProFile pipe 11.6x1,5 Laser
- VarioComp panels 600x1000 mm
- PE construction foil
- Variotherm XPS panel 20 mm
- Instalation zone for electrical wiring 40 mm
- Grid of support ridges 40 mm (installation zone)

Facade system: SKIN

- Velfac 200 Energy window with triple glazing

Balcony floor system: ACCESS & OUTDOOR SPACE

- Floor timber finishing
- Installation zone for irrigation plants
- Timber beams 50x265 mm with 60 mm holes (spacing 1000 mm) for irrigation pipes
- Ceiling timber finishing

Connection components: SKIN

- Steel U-profile 300x280x20 mm
- Plastic sheet 260x30
- Bolt connctions 10 mm

Sub-structure: SUPPORT

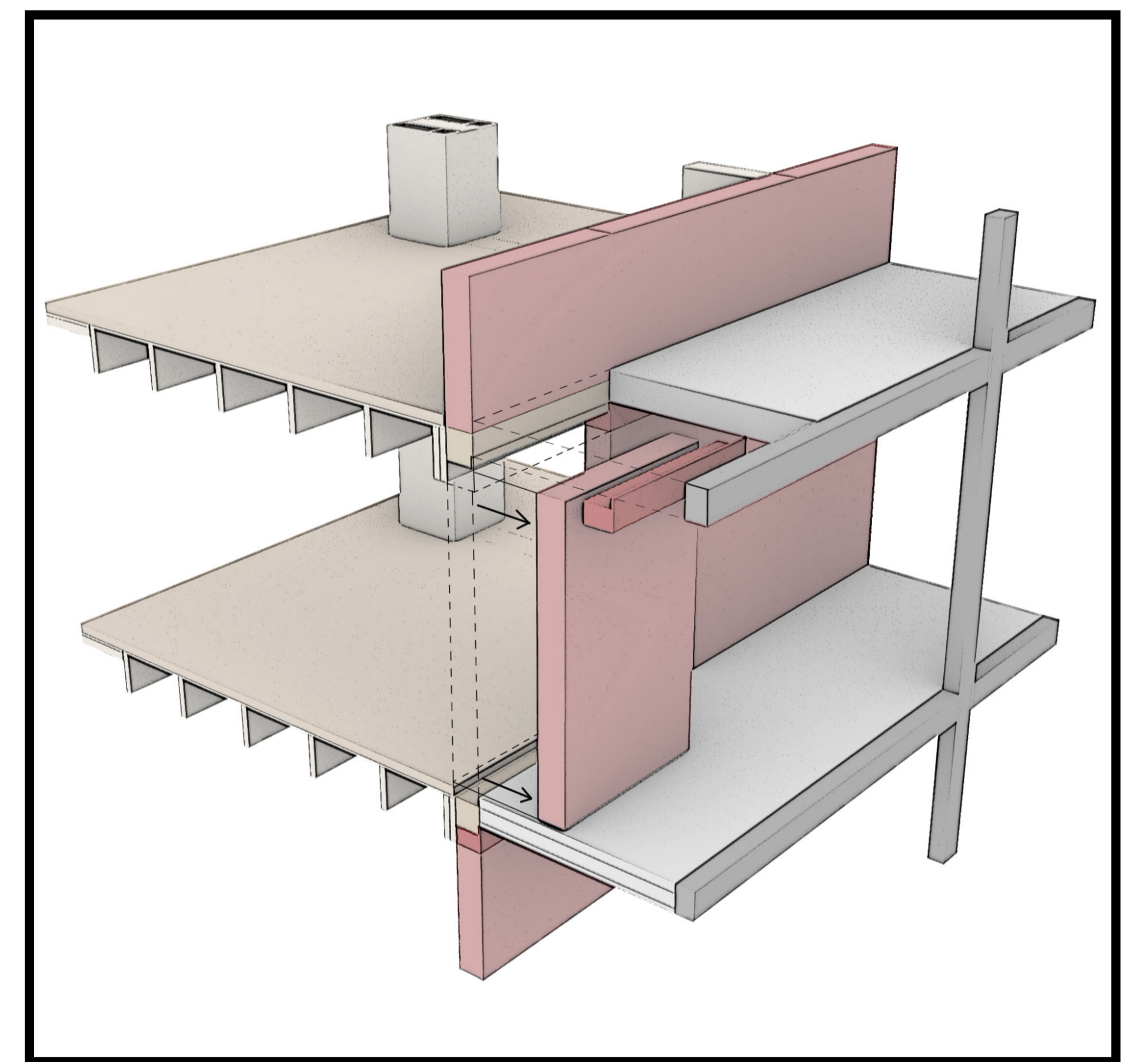
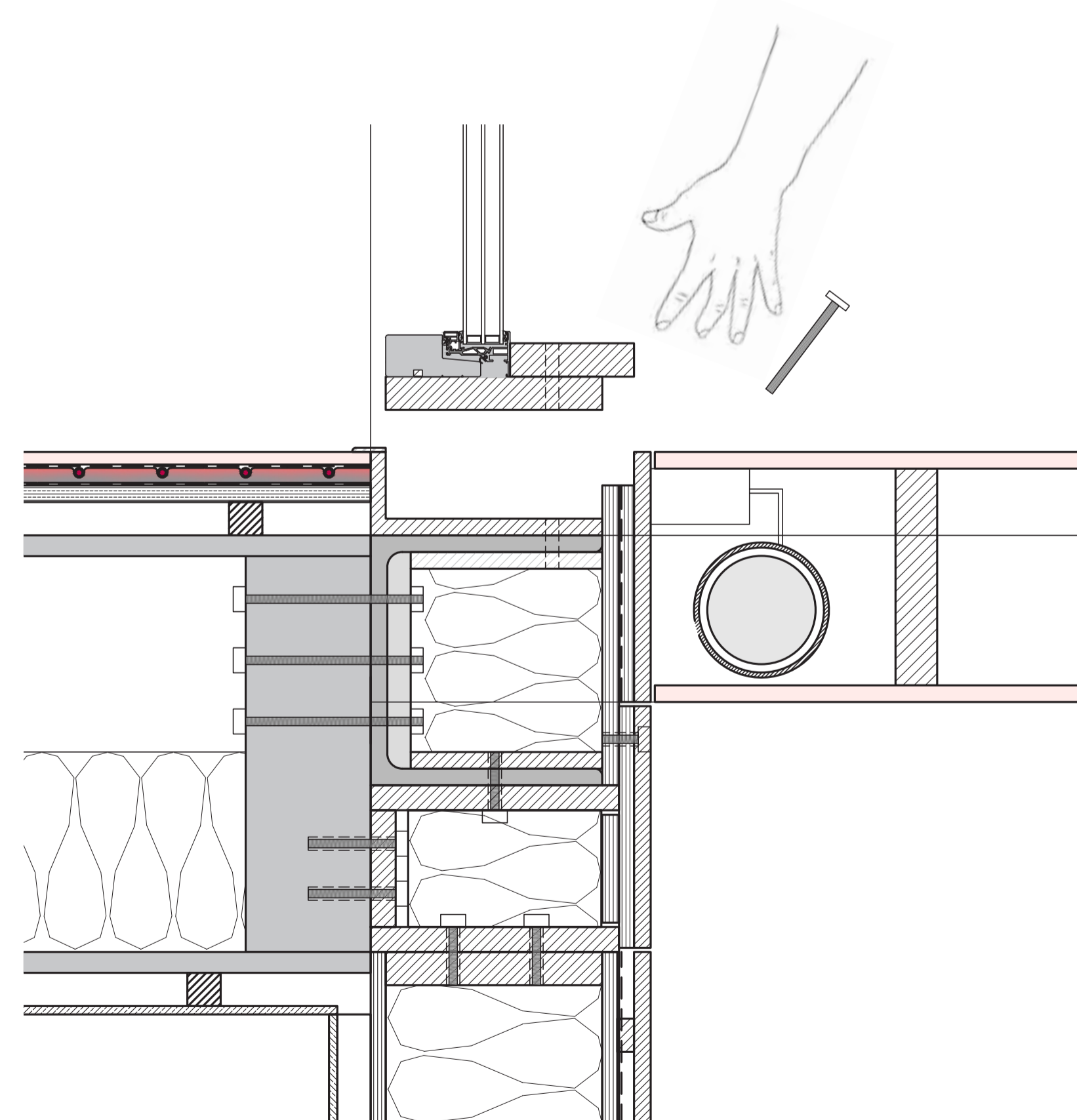
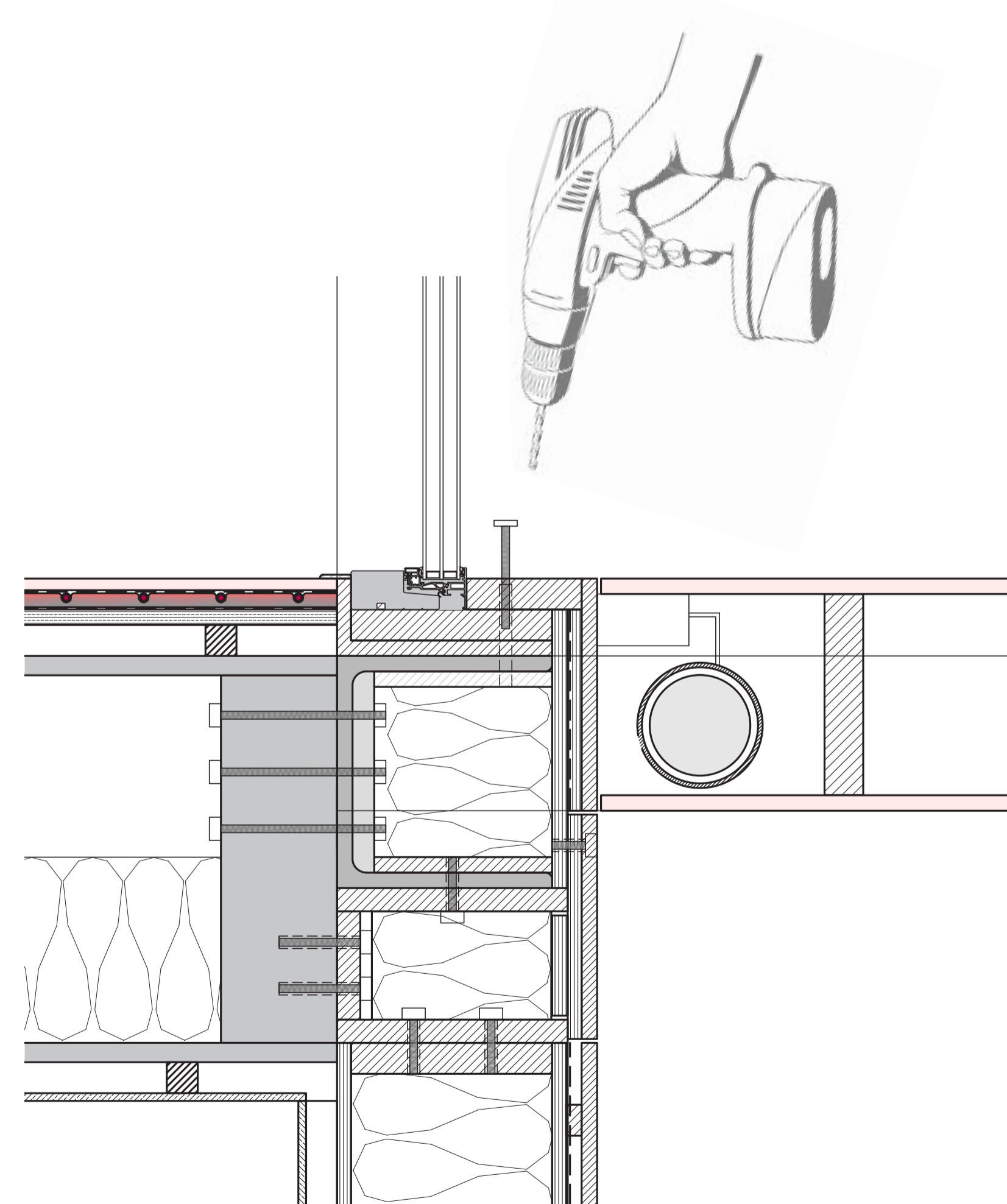
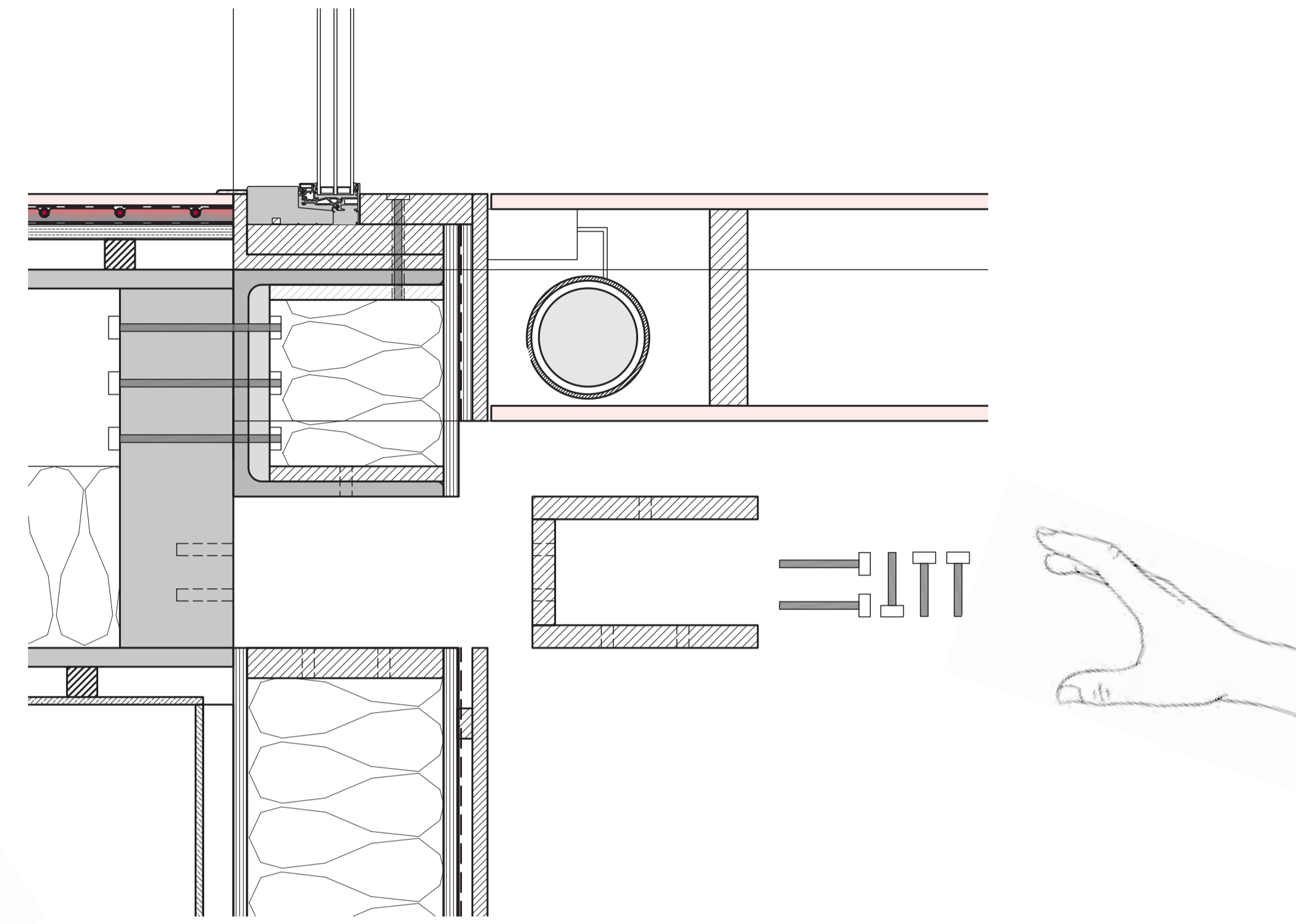
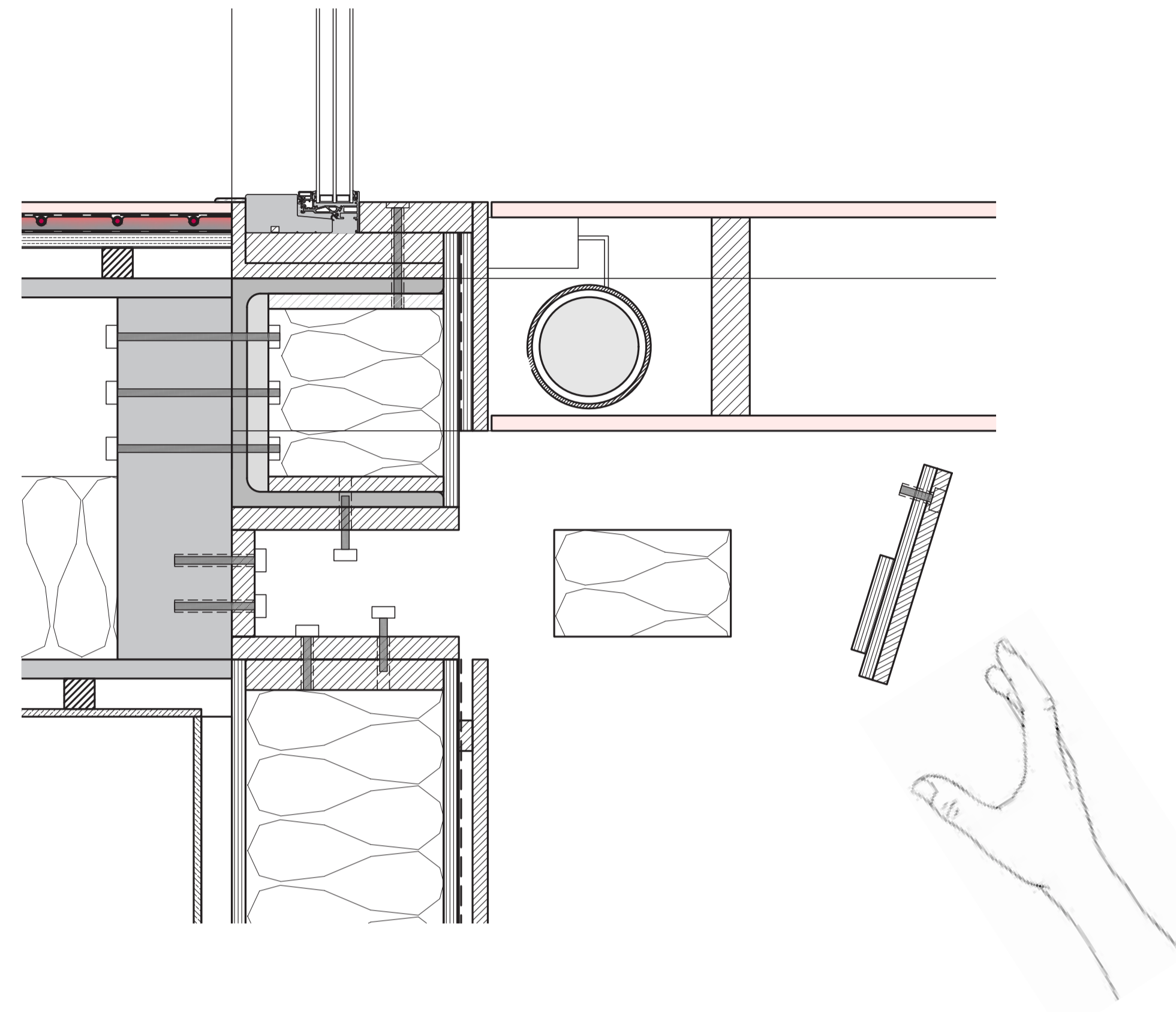
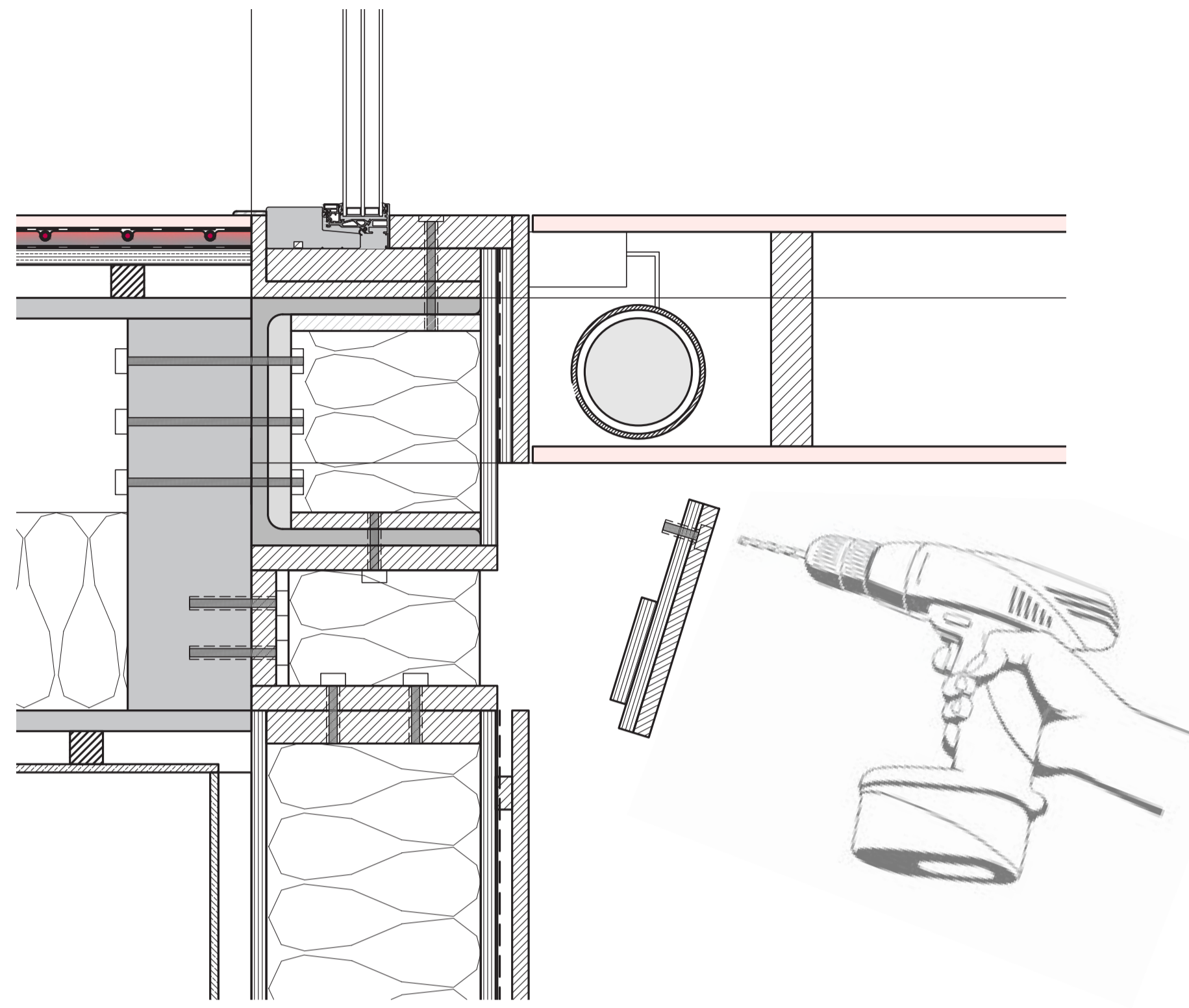
- Steel beam 200x400

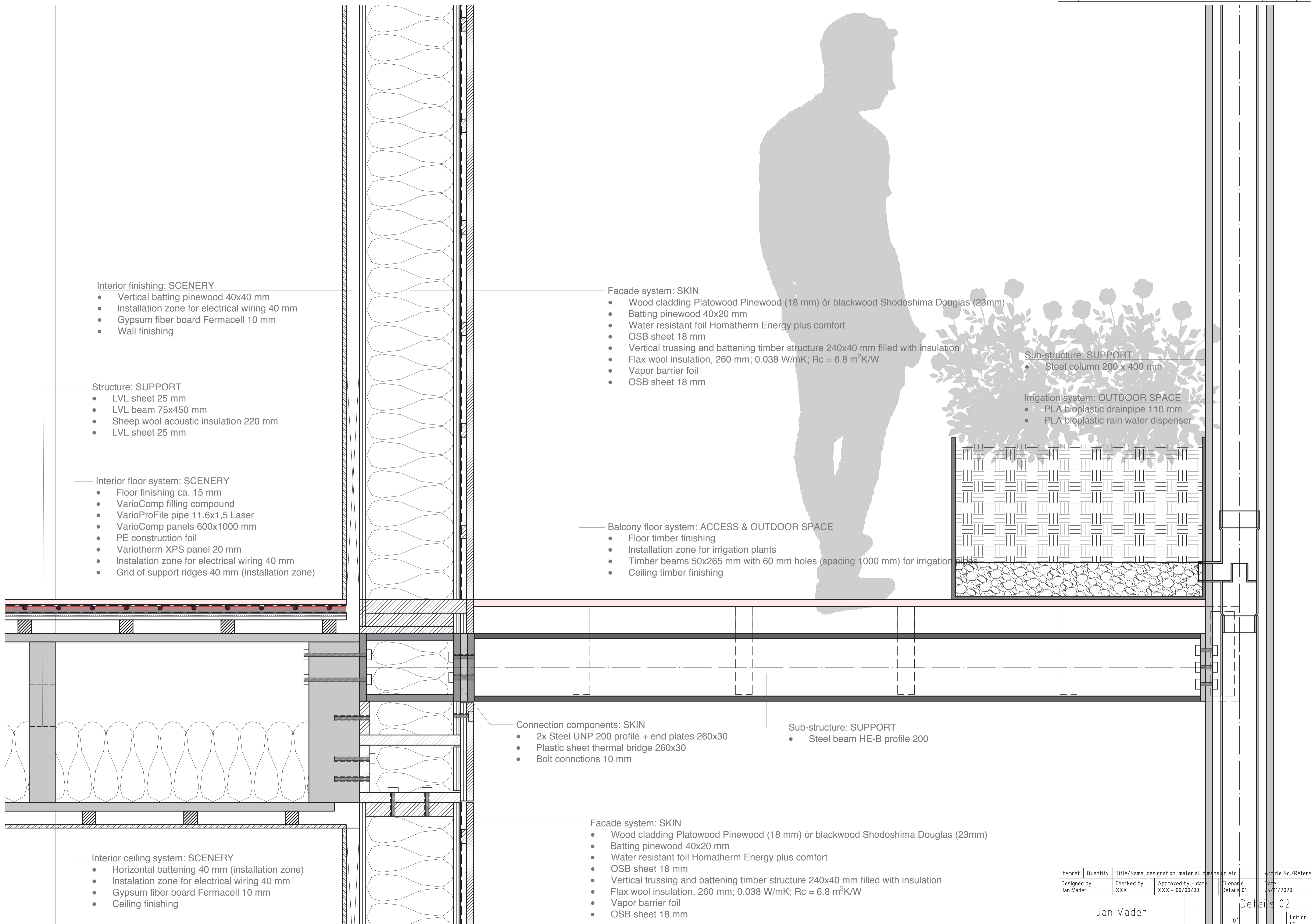
Facade system: SKIN

- Wood cladding Platowood Pinewood (18 mm) ór blackwood Shodoshima Douglas (23mm)
- Battening pinewood 40x20 mm
- Water resistant foil Homatherm Energy plus comfort
- OSB sheet 18 mm
- Vertical trussing and battening timber structure 240x40 mm filled with insulation
- Flax wool insulation, 260 mm; 0.038 W/mK; Rc = 6.8 m<sup>2</sup>K/W
- Vapor barrier foil
- OSB sheet 18 mm

Interior ceiling system: SCENERY

- Horizontal battening 40 mm (installation zone)
- Instalation zone for electrical wiring 40 mm
- Gypsum fiber board Fermacell 10 mm
- Ceiling finishing





- Interior finishing: SCENERY
- Vertical battening pinewood 40x40 mm
  - Installation zone for electrical wiring 40 mm
  - Gypsum fiber board Fermacell 10 mm
  - Wall finishing

- Structure: SUPPORT
- LVL sheet 25 mm
  - LVL beam 75x450 mm
  - Sheep wool acoustic insulation 220 mm
  - LVL sheet 25 mm

- Interior floor system: SCENERY
- Floor finishing ca. 15 mm
  - VarioComp filling compound
  - VarioProFile pipe 11.6x1,5 Laser
  - VarioComp panels 600x1000 mm
  - PE construction foil
  - Variotherm XPS panel 20 mm
  - Installation zone for electrical wiring 40 mm
  - Grid of support ridges 40 mm (installation zone)

- Interior ceiling system: SCENERY
- Horizontal battening 40 mm (installation zone)
  - Installation zone for electrical wiring 40 mm
  - Gypsum fiber board Fermacell 10 mm
  - Ceiling finishing

- Facade system: SKIN
- Wood cladding Platowood Pinewood (18 mm) ór blackwood Shodoshima Douglas (23mm)
  - Battening pinewood 40x20 mm
  - Water resistant foil Homatherm Energy plus comfort
  - OSB sheet 18 mm
  - Vertical trussing and battening timber structure 240x40 mm filled with insulation
  - Flax wool insulation, 260 mm; 0.038 W/mK; Rc = 6.8 m<sup>2</sup>K/W
  - Vapor barrier foil
  - OSB sheet 18 mm

- Balcony floor system: ACCESS & OUTDOOR SPACE
- Floor timber finishing
  - Installation zone for irrigation plants
  - Timber beams 50x265 mm with 60 mm holes (spacing 1000 mm) for irrigation pipes
  - Ceiling timber finishing

- Connection components: SKIN
- 2x Steel UNP 200 profile + end plates 260x30
  - Plastic sheet thermal bridge 260x30
  - Bolt connctions 10 mm

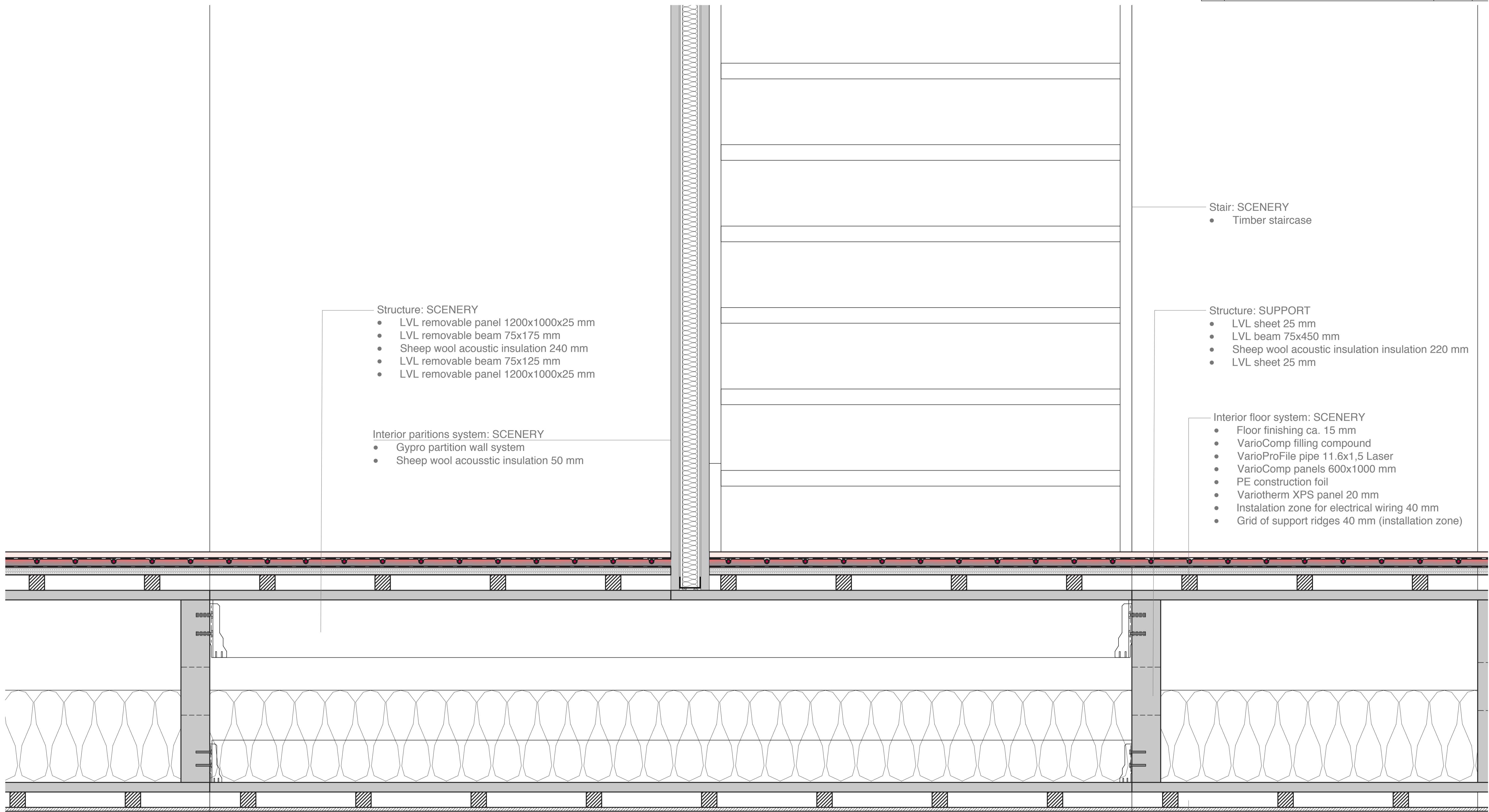
- Facade system: SKIN
- Wood cladding Platowood Pinewood (18 mm) ór blackwood Shodoshima Douglas (23mm)
  - Battening pinewood 40x20 mm
  - Water resistant foil Homatherm Energy plus comfort
  - OSB sheet 18 mm
  - Vertical trussing and battening timber structure 240x40 mm filled with insulation
  - Flax wool insulation, 260 mm; 0.038 W/mK; Rc = 6.8 m<sup>2</sup>K/W
  - Vapor barrier foil
  - OSB sheet 18 mm

- Sub-structure: SUPPORT
- Steel column 200 x 400 mm

- Irrigation system: OUTDOOR SPACE
- PLA bioplastic drainpipe 110 mm
  - PLA bioplastic rain water dispenser

Itemref	Quantity	Title/Name, designation, material, dimension etc	Article No./Refere
Designed by Jan Vader	Checked by XXX	Approved by - date XXX - 00/00/00	Filename Details 01
Jan Vader			Date 25/11/2020
			Edition 01
			Article No./Refere Details 02





- Structure: SCENERY
- LVL removable panel 1200x1000x25 mm
  - LVL removable beam 75x175 mm
  - Sheep wool acoustic insulation 240 mm
  - LVL removable beam 75x125 mm
  - LVL removable panel 1200x1000x25 mm

- Interior partitions system: SCENERY
- Gypro partition wall system
  - Sheep wool acoustic insulation 50 mm

- Stair: SCENERY
- Timber staircase

- Structure: SUPPORT
- LVL sheet 25 mm
  - LVL beam 75x450 mm
  - Sheep wool acoustic insulation insulation 220 mm
  - LVL sheet 25 mm

- Interior floor system: SCENERY
- Floor finishing ca. 15 mm
  - VarioComp filling compound
  - VarioProFile pipe 11.6x1,5 Laser
  - VarioComp panels 600x1000 mm
  - PE construction foil
  - Variotherm XPS panel 20 mm
  - Instalation zone for electrical wiring 40 mm
  - Grid of support ridges 40 mm (installation zone)

- Interior ceiling system: SCENERY
- Horizontal battening 40 mm (installation zone)
  - Instalation zone for electrical wiring 40 mm
  - Gypsum fiber board Fermacell 10 mm
  - Ceiling finishing

Itemref	Quantity	Title/Name, designation, material, dimension etc	Article No./Refer
Designed by Jan Vader	Checked by XXX	Approved by - date XXX - 00/00/00	Filename Details 01
Date 25/11/2020		Date 25/11/2020	
Jan Vader		Details 03	
01		Edition 1.01	

