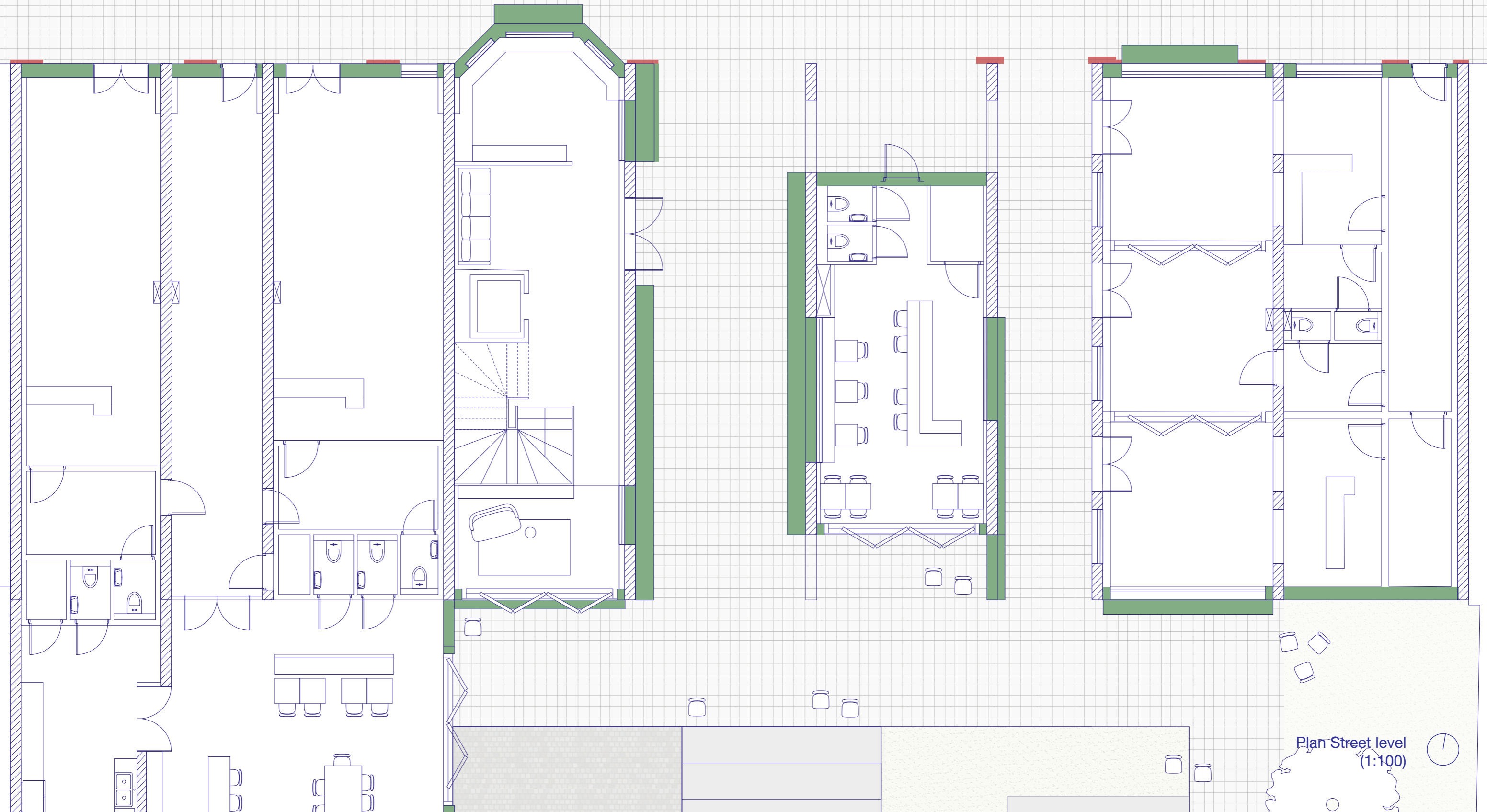




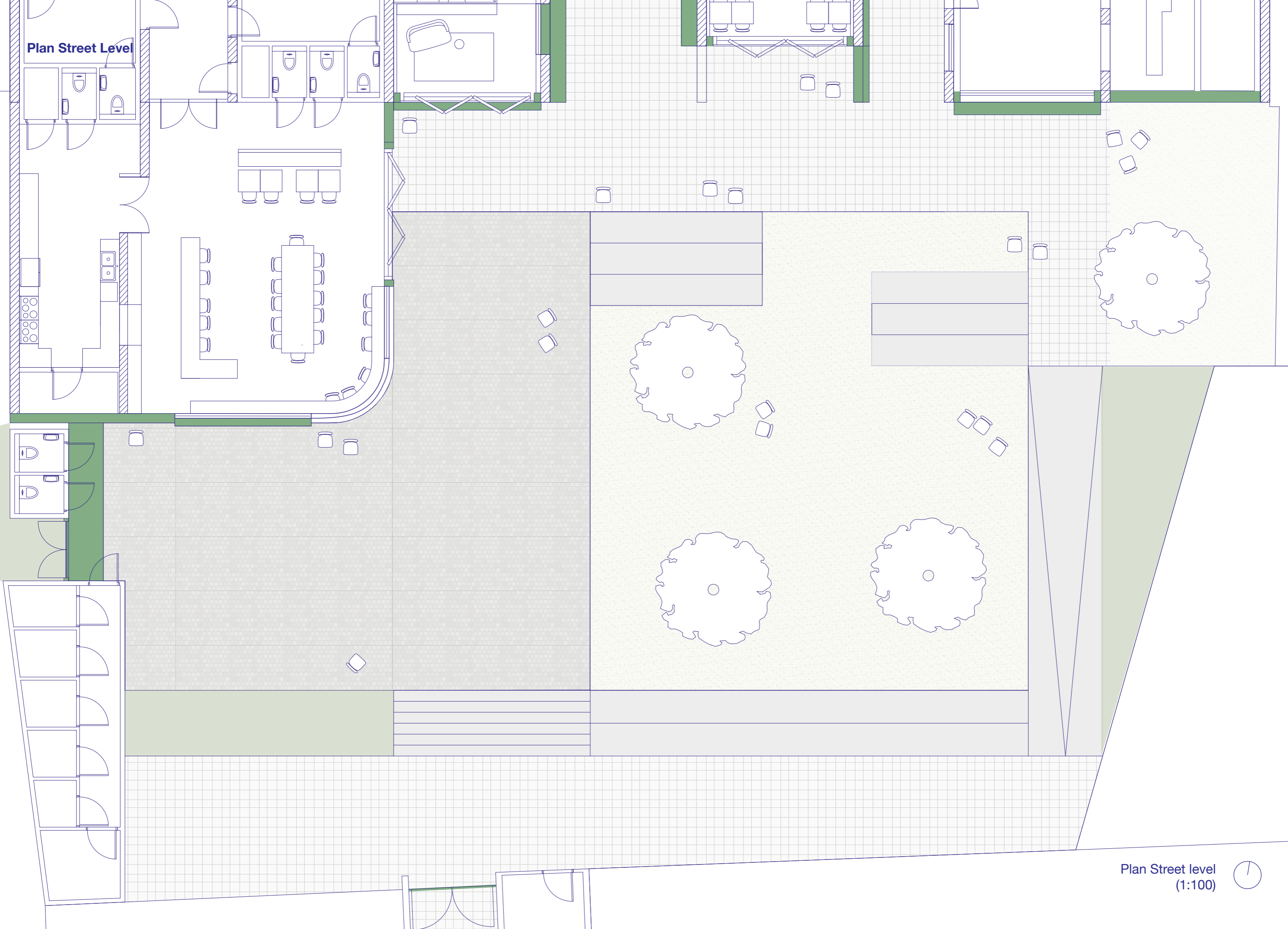
Plan Street Level



Plan Street level  
(1:100)

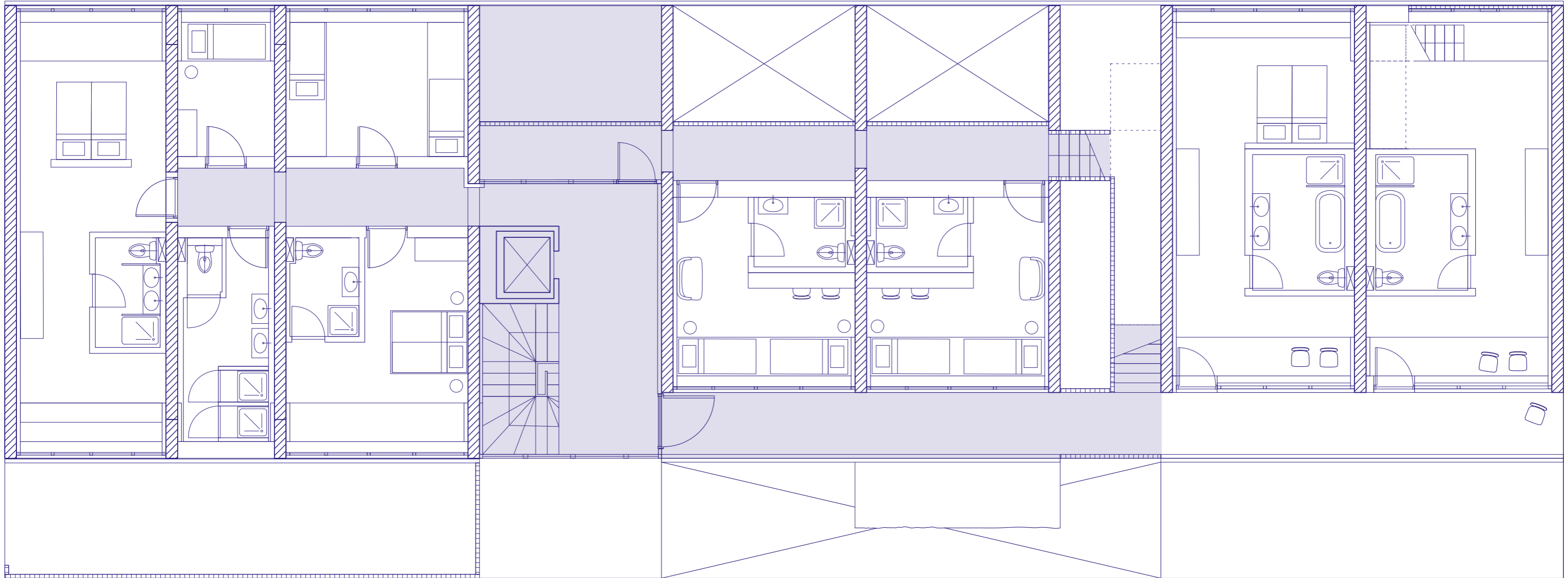


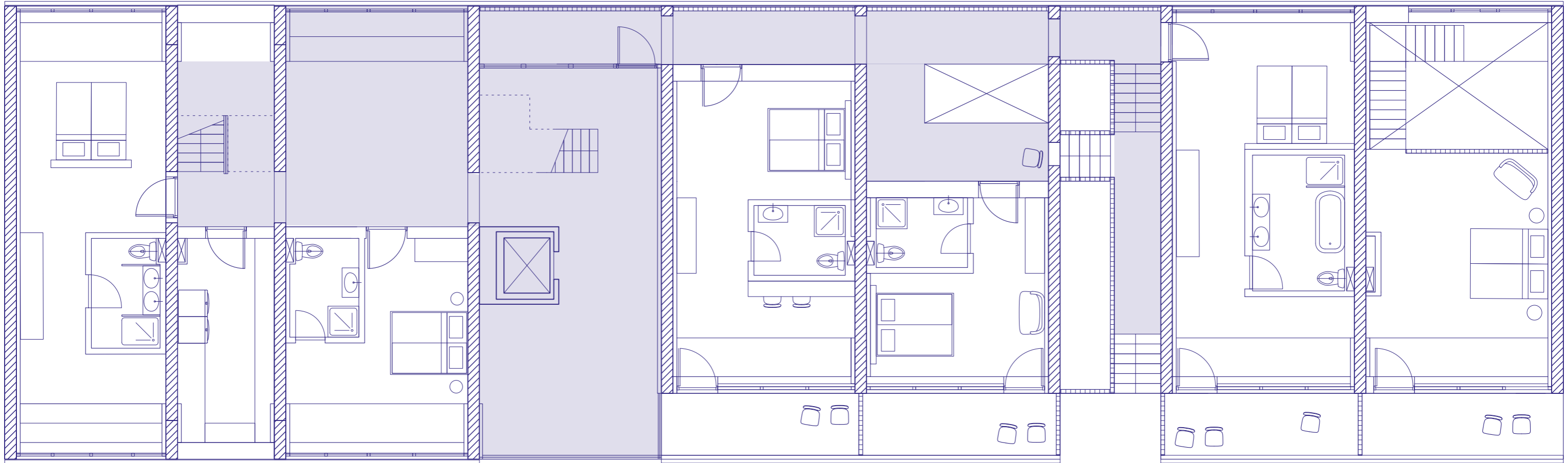
Plan Street Level

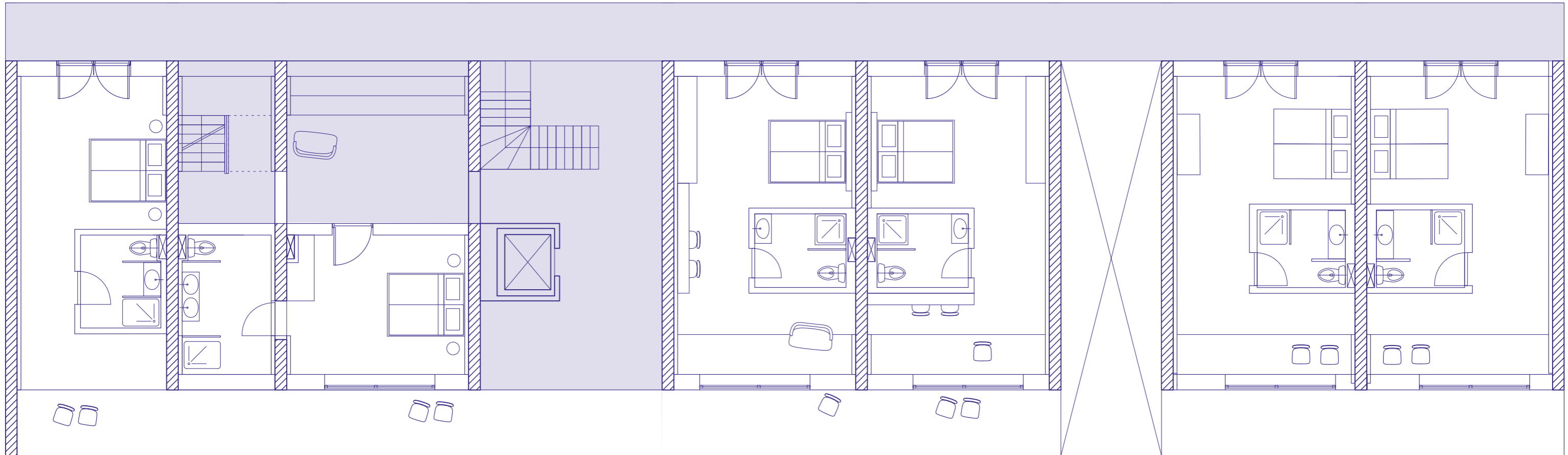


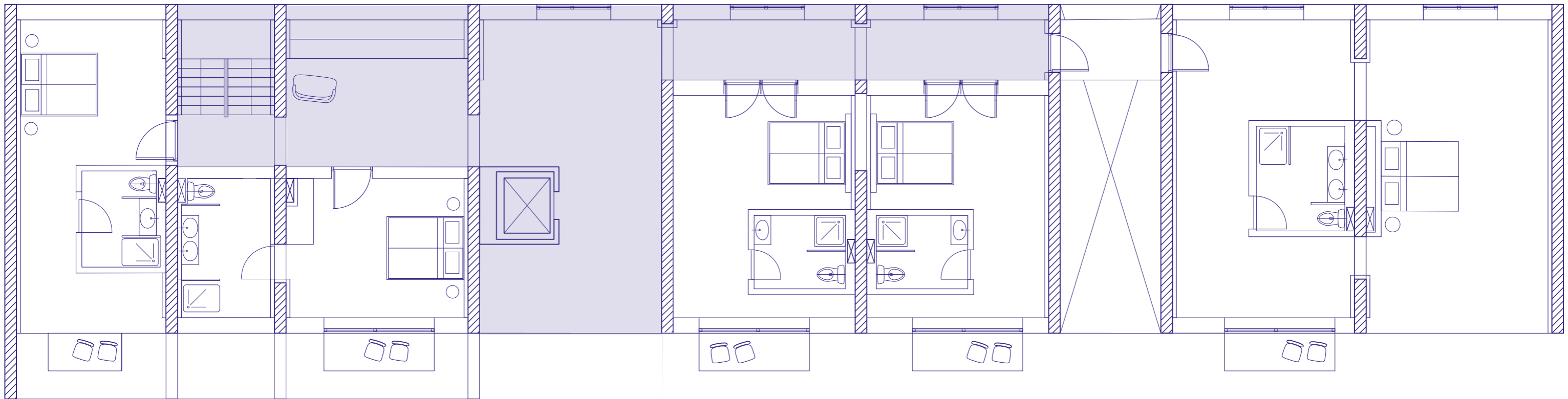
Plan Street level  
(1:100)





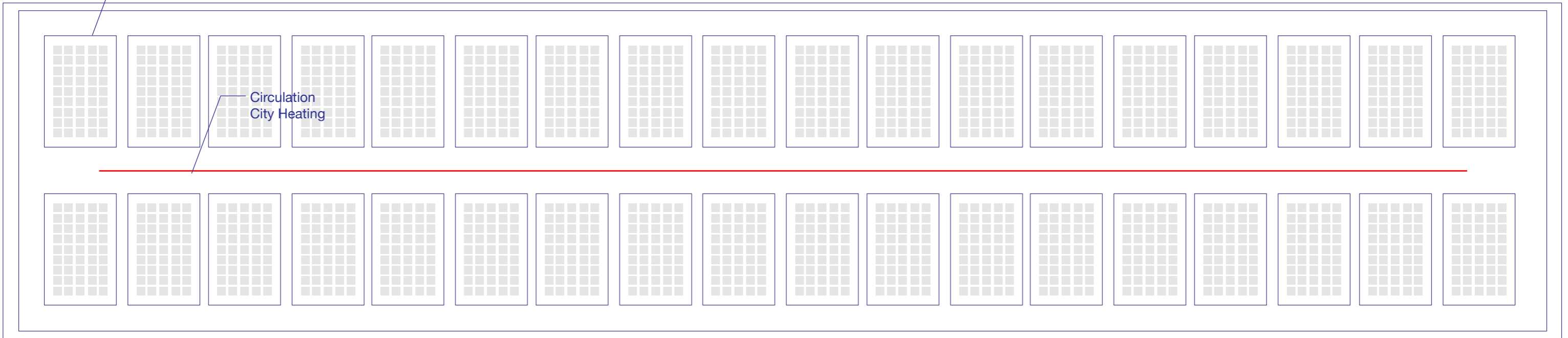






PV panels

Circulation  
City Heating



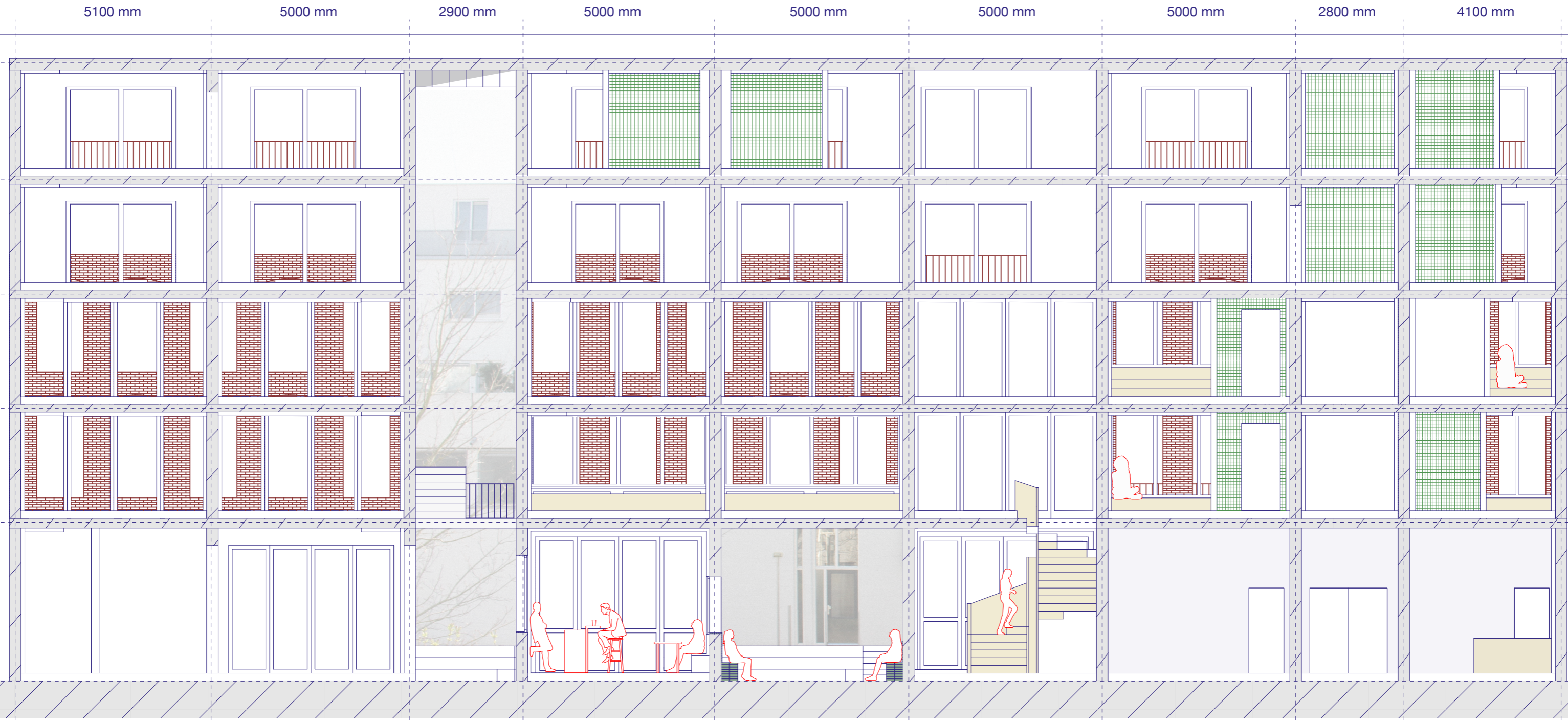


Facade



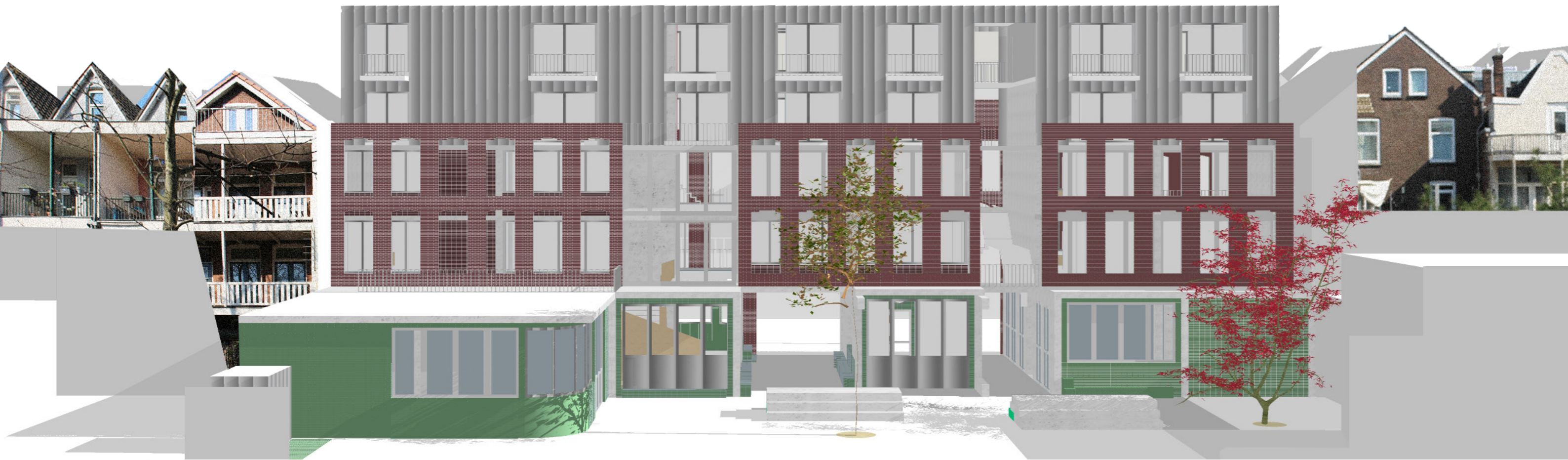


Section

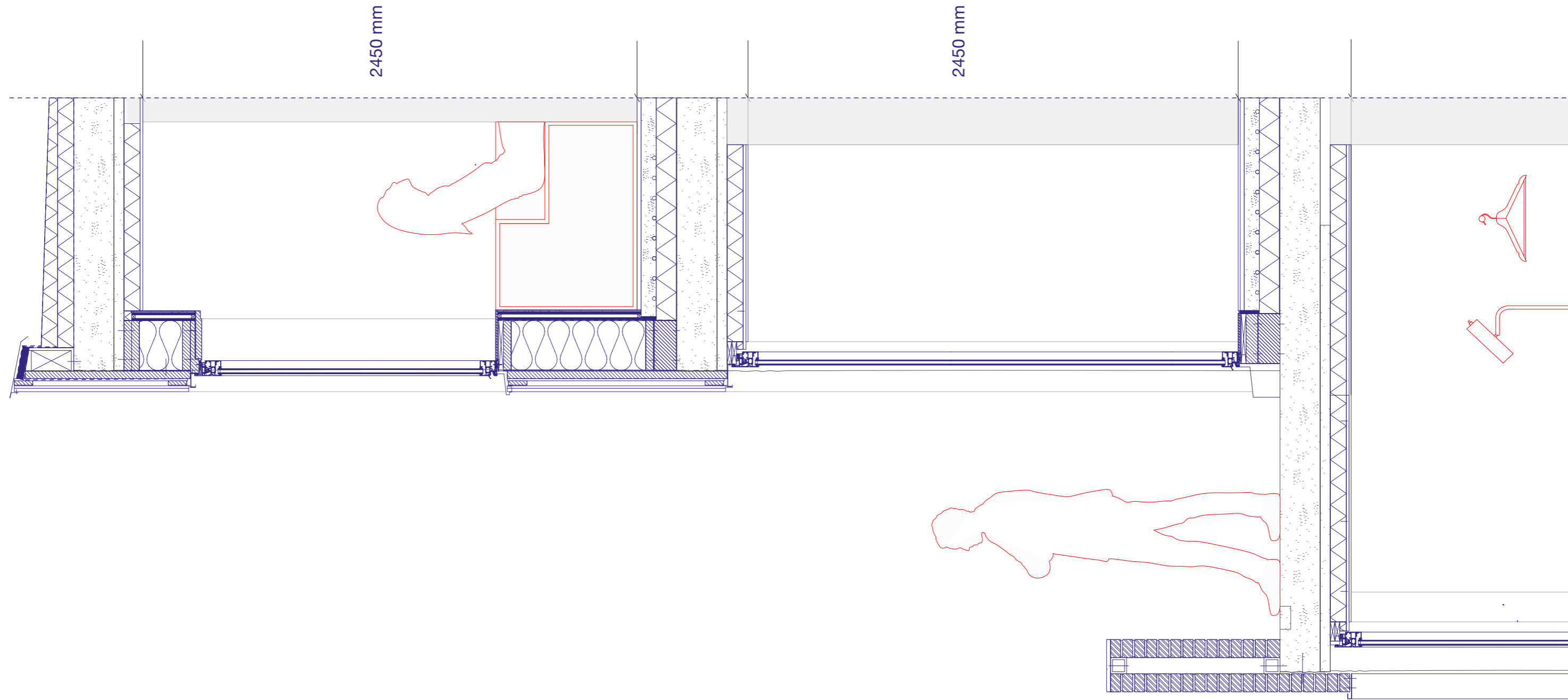


Facade

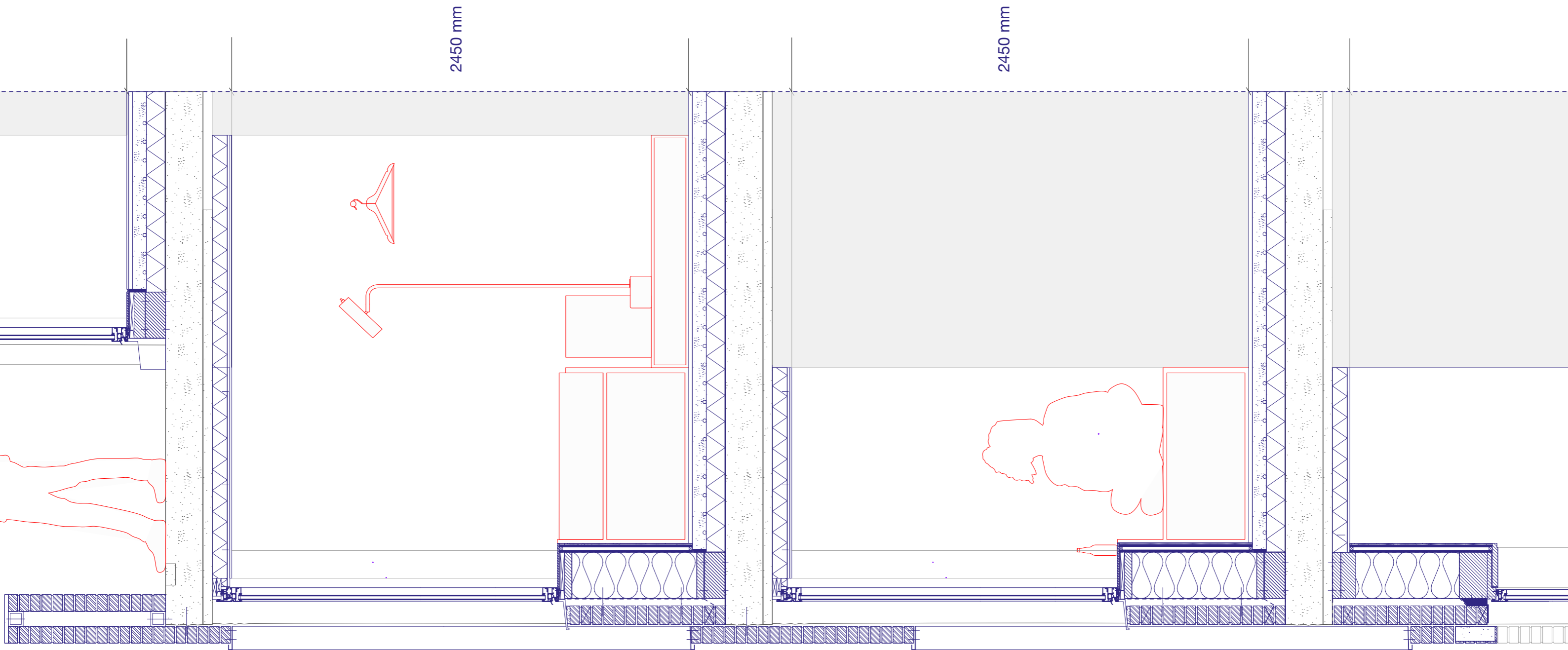




Facade fragment



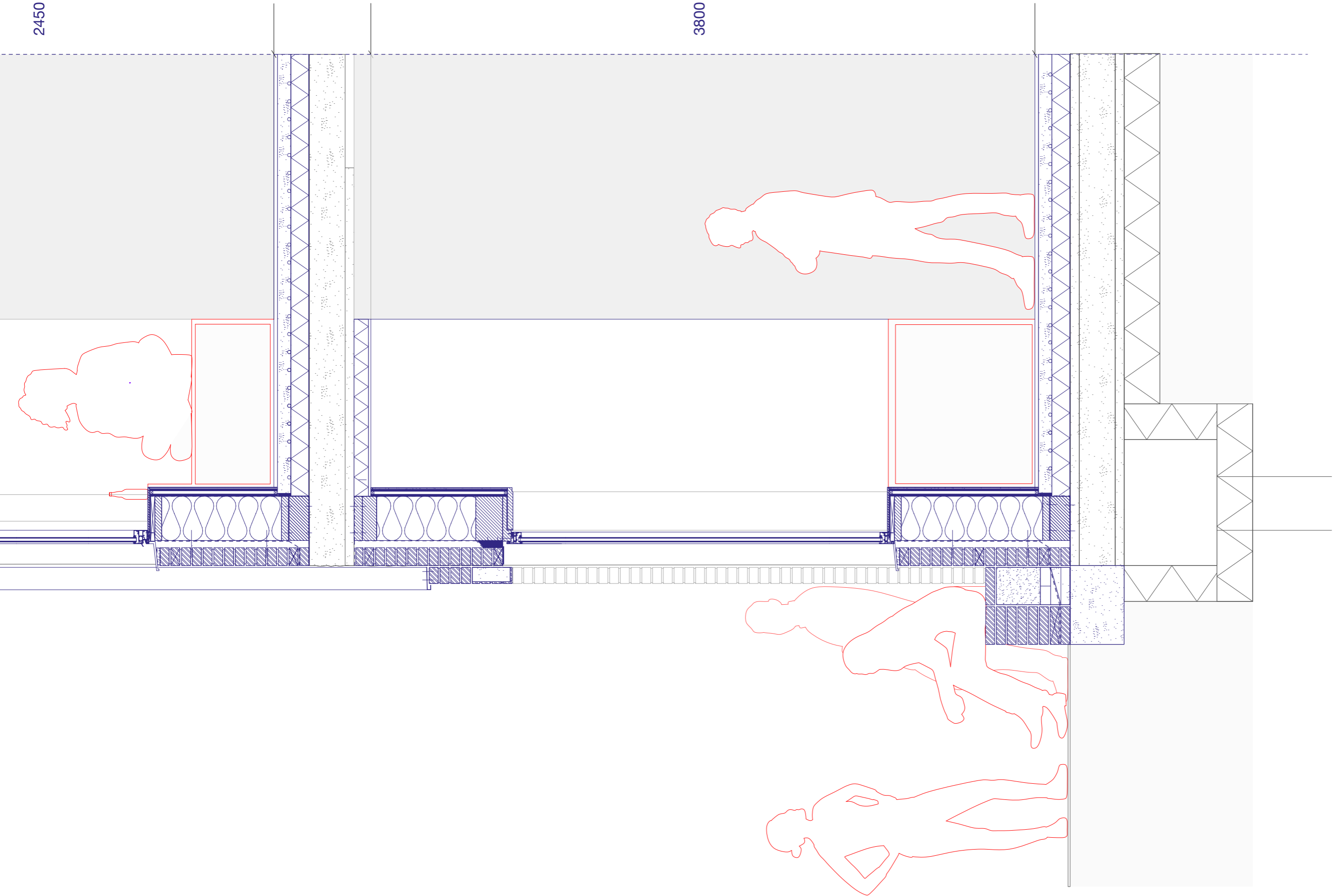
Facade fragment



Facade fragment

2450 mm

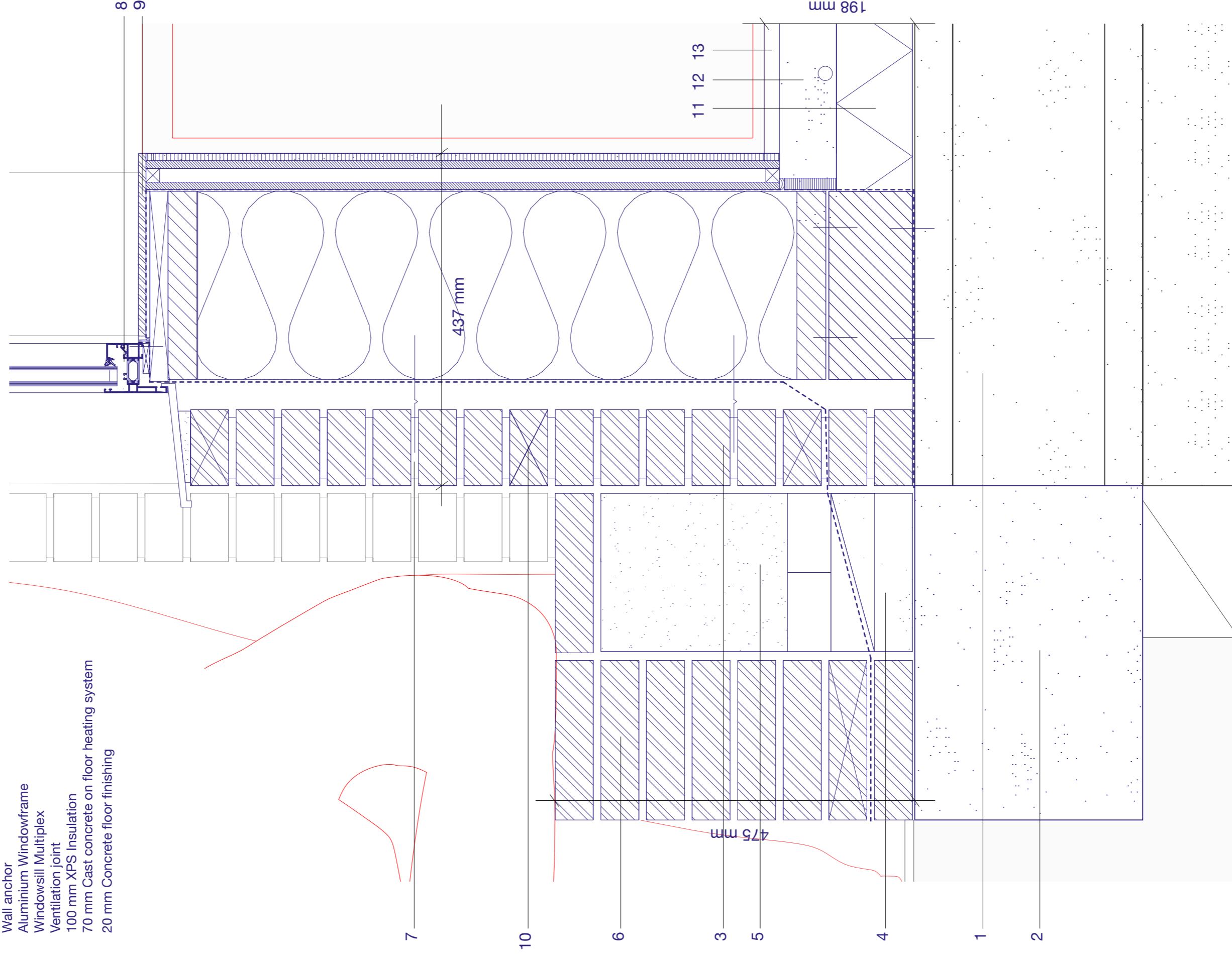
3800 mm





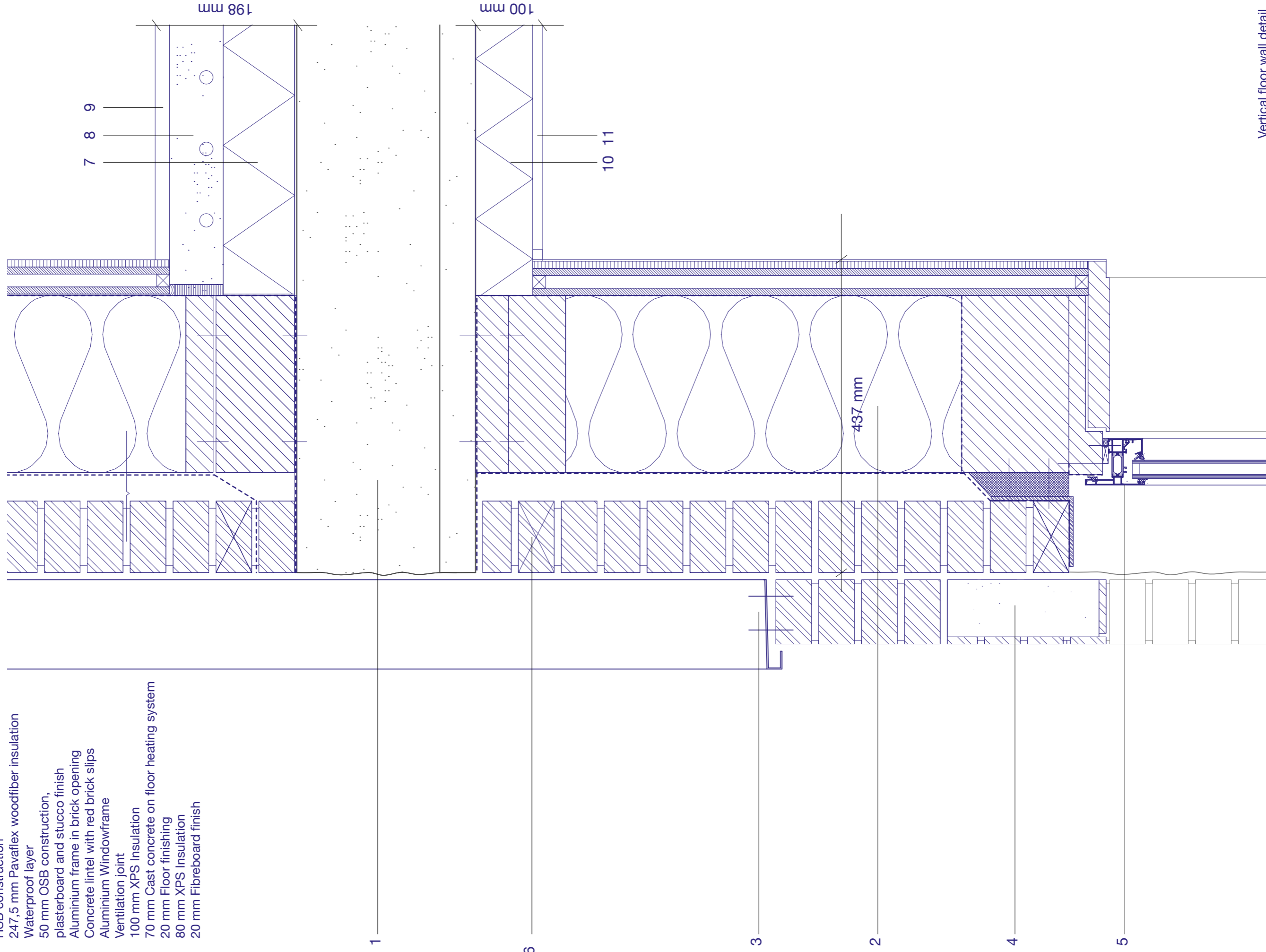
Vertical detail 1:5 - Foundation with bench

1. Existing Foundation
2. Additional Foundation
3. Facade construction
  - 100 mm Brick Green (brick bond tiling)
  - 40 mm Ventilated air cavity
  - Vapour barrier
  - HSB construction
  - 247,5 mm Pavaflex woodfiber insulation
  - Waterproof layer
4. 50 mm OSB construction with plasterboard finish (room for wall socket)
5. Concrete Block
6. Rubble fill
7. Green glazed brick bench (brick bond tiling)
8. Wall anchor
9. Aluminium Windowframe
10. Windowsill Multiplex
11. Ventilation joint
12. 100 mm XPS Insulation
13. 70 mm Cast concrete on floor heating system
- 20 mm Concrete floor finishing



Vertical detail 1:5 - Floor wall joint

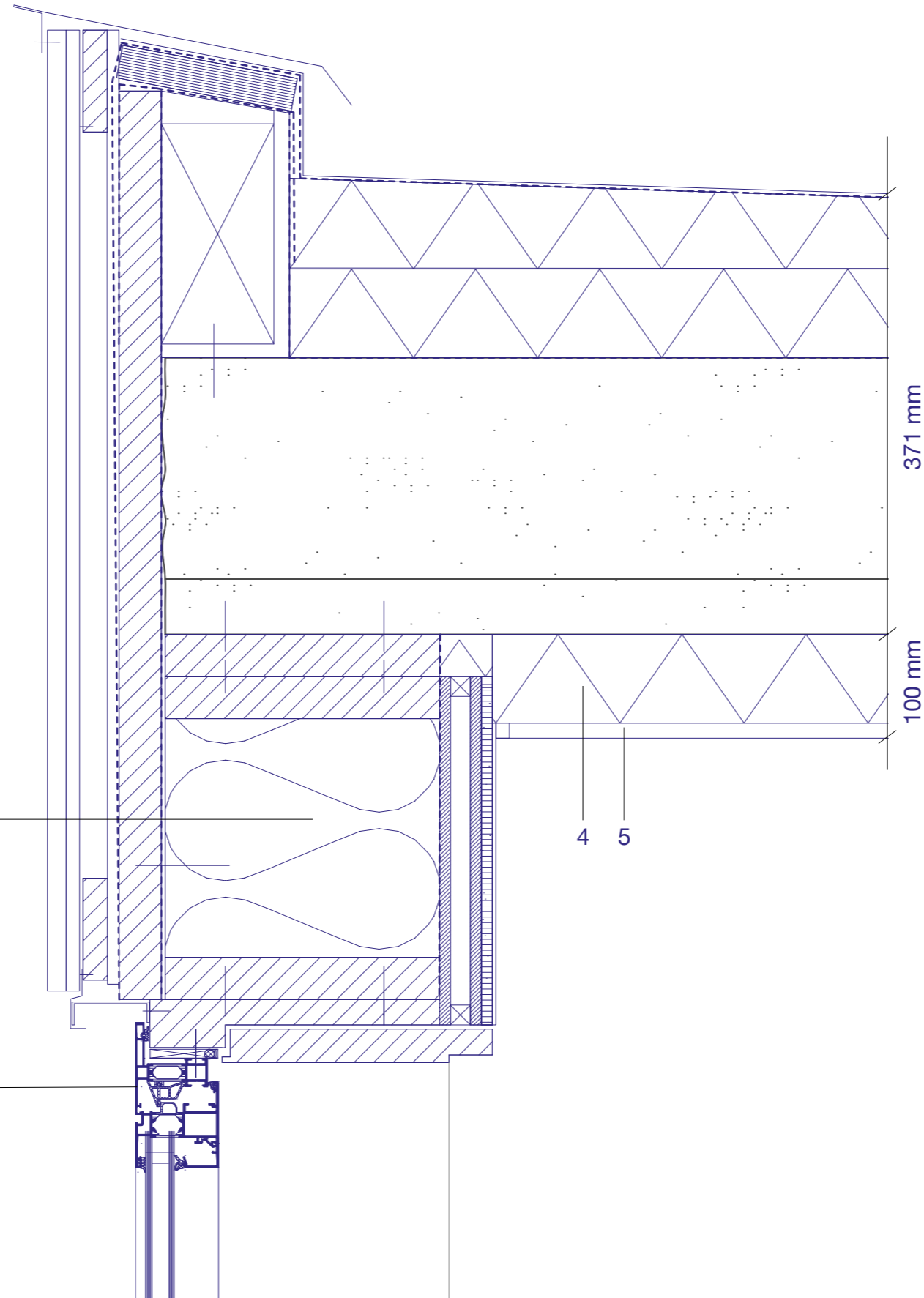
1. Existing Concrete construction floor
2. Facade construction
  - 100 mm Brick Red
  - 100 mm Brick Dark Red
  - 40 mm Ventilated air cavity
  - Vapour barrier
  - HSB construction
  - 247,5 mm Pavaflex woodfiber insulation
  - Waterproof layer
  - 50 mm OSB construction, plasterboard and stucco finish
  - Aluminium frame in brick opening
  - Concrete lintel with red brick slips
  - Aluminium Windowframe
  - Ventilation joint
  - 100 mm XPS Insulation
  - 70 mm Cast concrete on floor heating system
  - 20 mm Floor finishing
  - 80 mm XPS Insulation
  - 20 mm Fibreboard finish



Vertical floor wall detail  
5 10 20

Vertical detail 1:5 - Window and roof detail

1. Roof
  - White bitumen roofing
  - Vapour barrier
  - Pavatherm sloped roof insulation
  - Waterproof layer
  - Existing concrete construction
2. Facade construction
  - Klikzink
  - 22 mm Subframe
  - Vertical battens
  - Vapour barrier
  - 38 mm Subframe
  - HSB Construction
  - 247,5 mm Pavaflex woodfiber insulation
  - Waterproof layer
  - 50 mm OSB construction with plasterboard finish  
(room for wall socket) (stucco finish at ceiling)
3. Aluminium Windowframe
4. 80 mm XPS Insulation
5. 20 mm Fibreboard finish



371 mm

100 mm

2

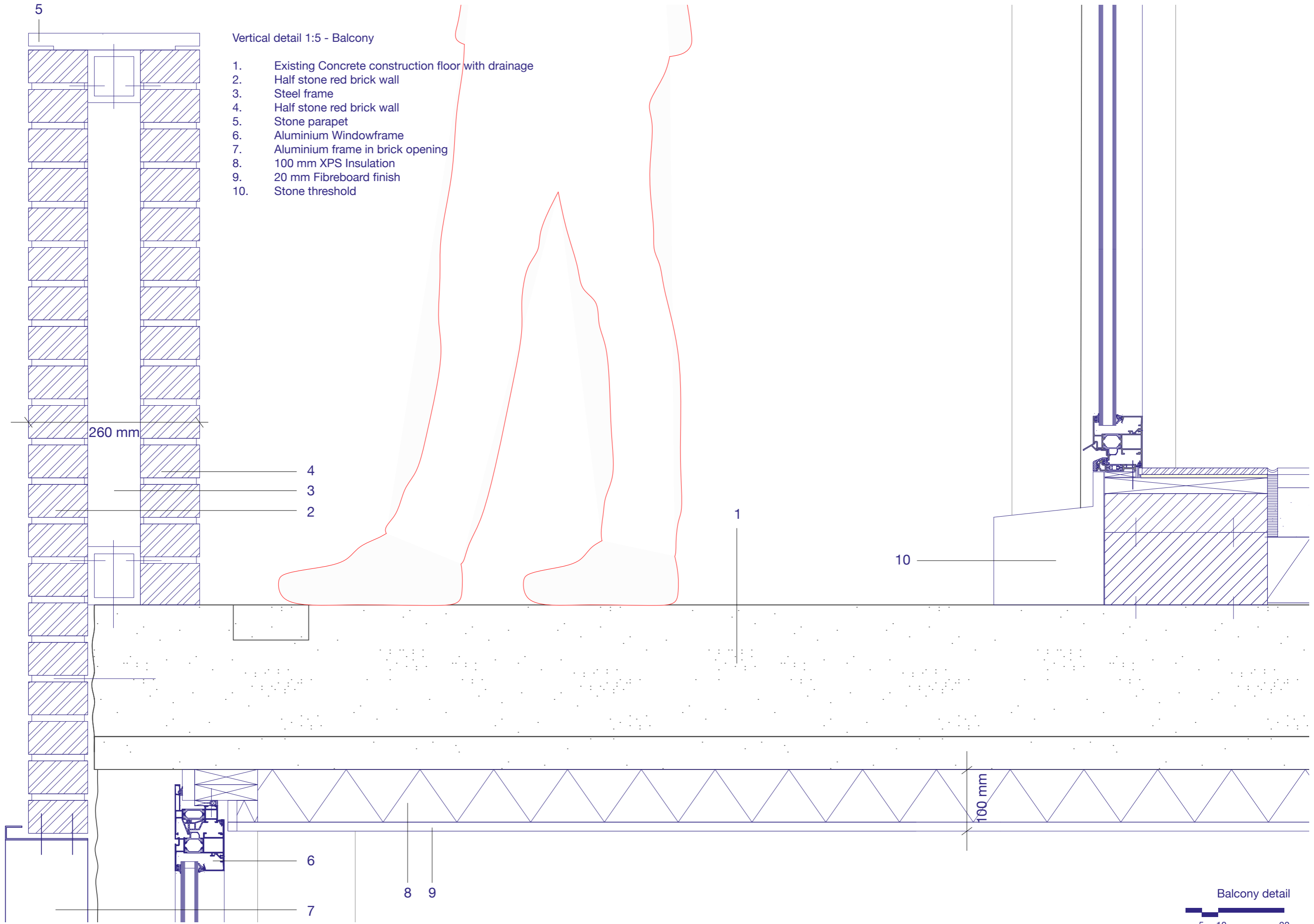
4 5

3

5

Vertical detail 1:5 - Balcony

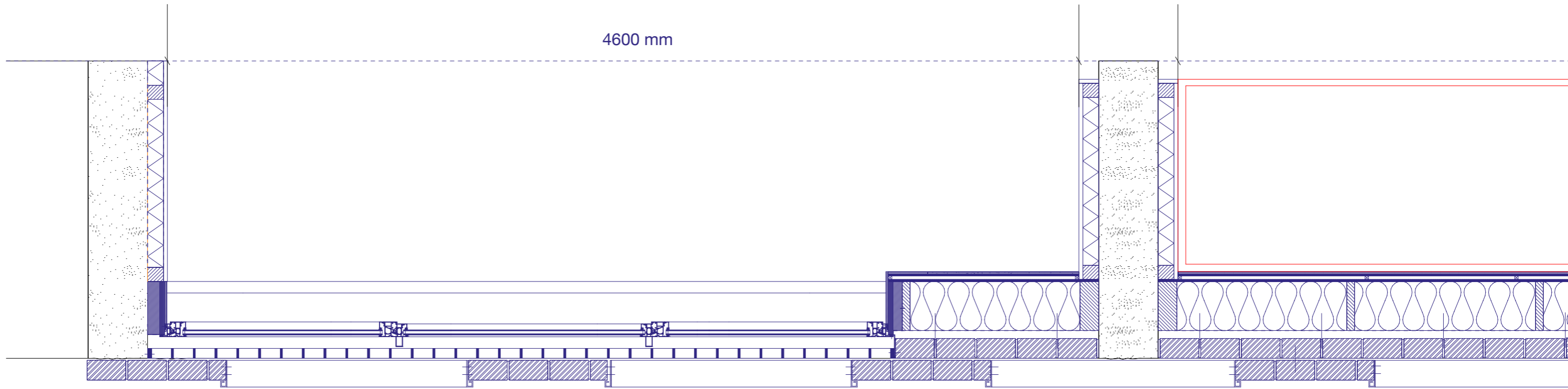
- 1. Existing Concrete construction floor with drainage
- 2. Half stone red brick wall
- 3. Steel frame
- 4. Half stone red brick wall
- 5. Stone parapet
- 6. Aluminium Windowframe
- 7. Aluminium frame in brick opening
- 8. 100 mm XPS Insulation
- 9. 20 mm Fibreboard finish
- 10. Stone threshold



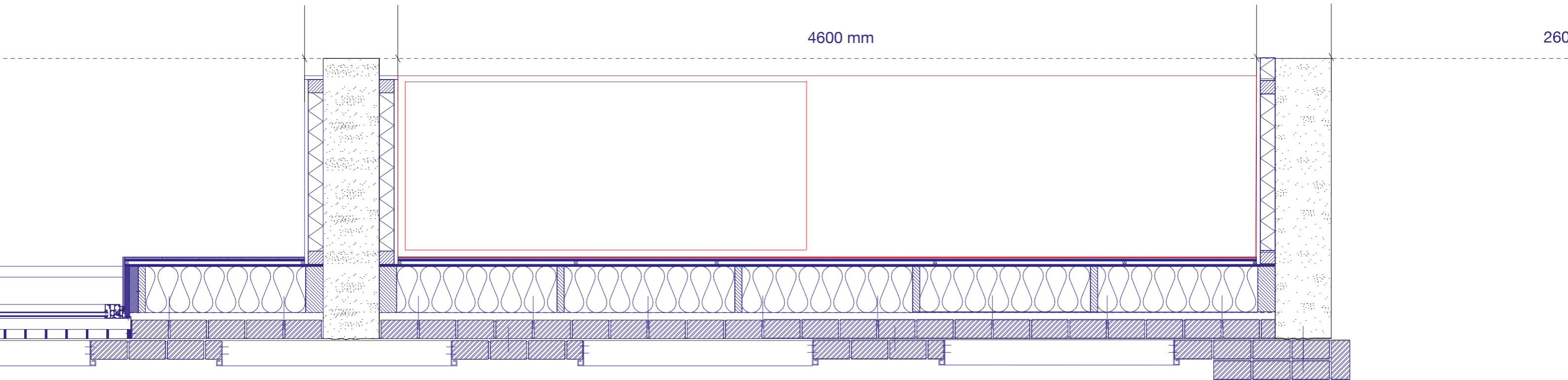
Balcony detail



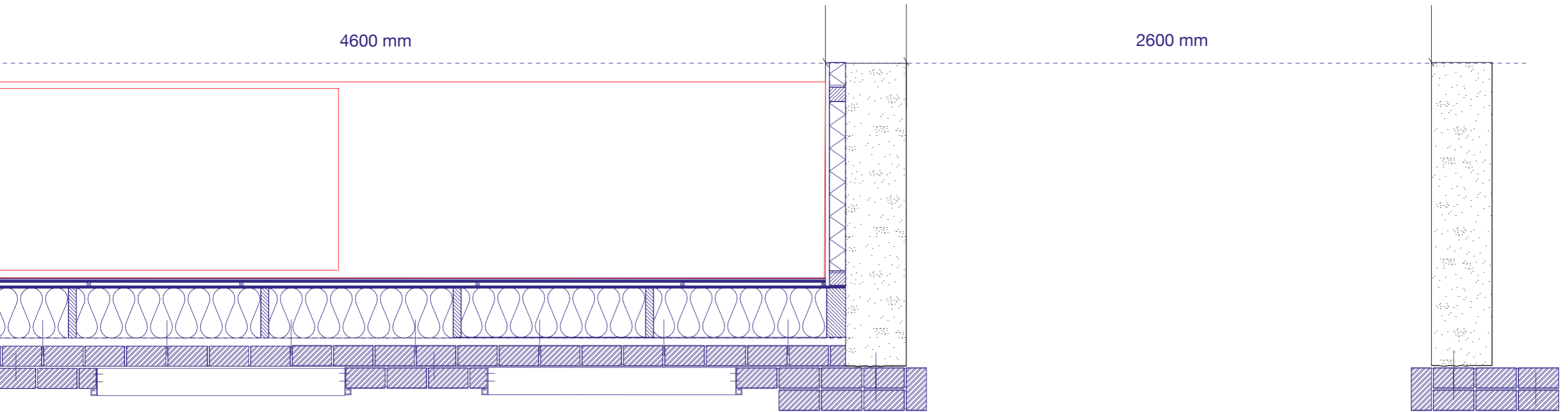
Facade fragment



Facade fragment

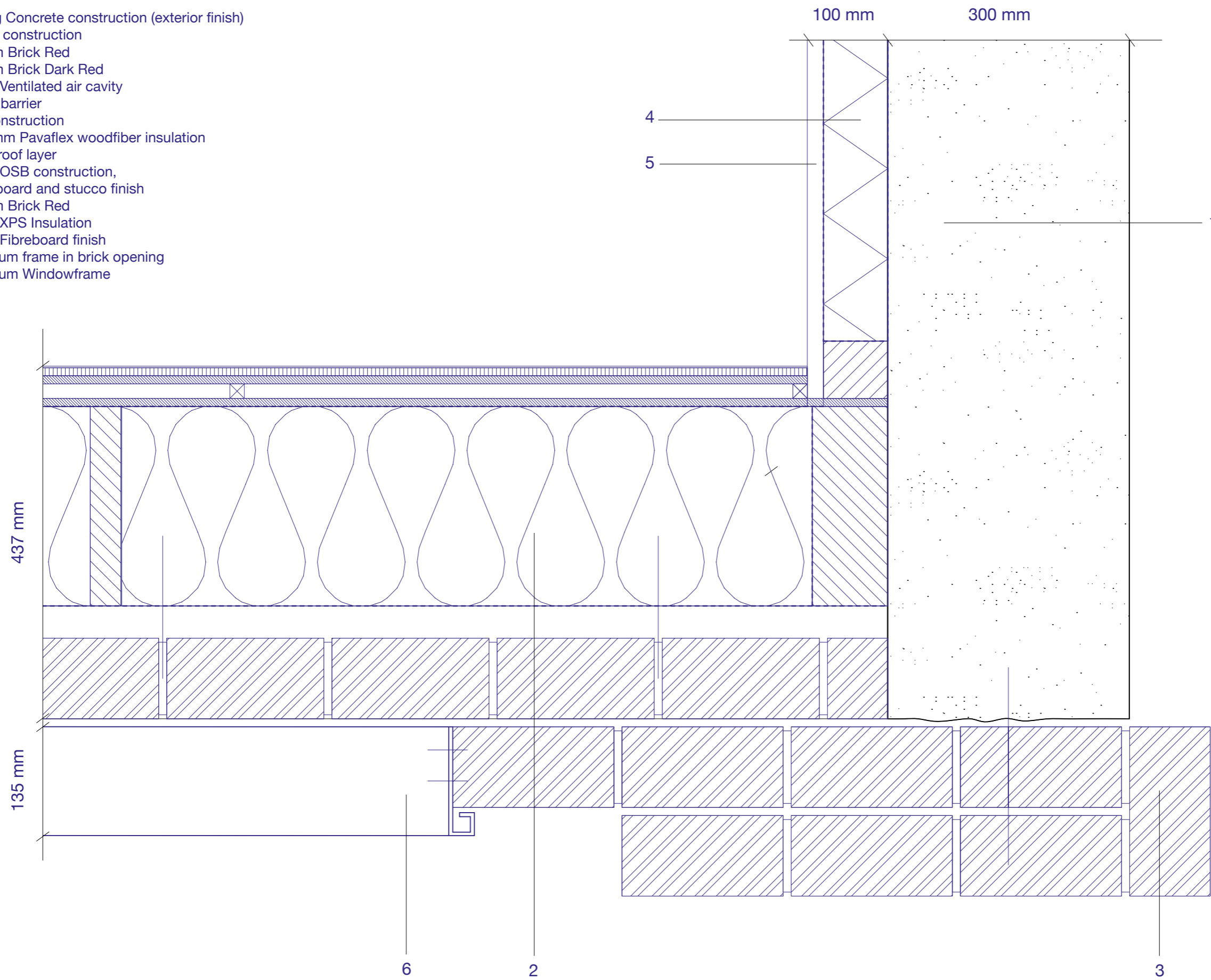


Facade fragment



Horizontal detail 1:5 - Corner

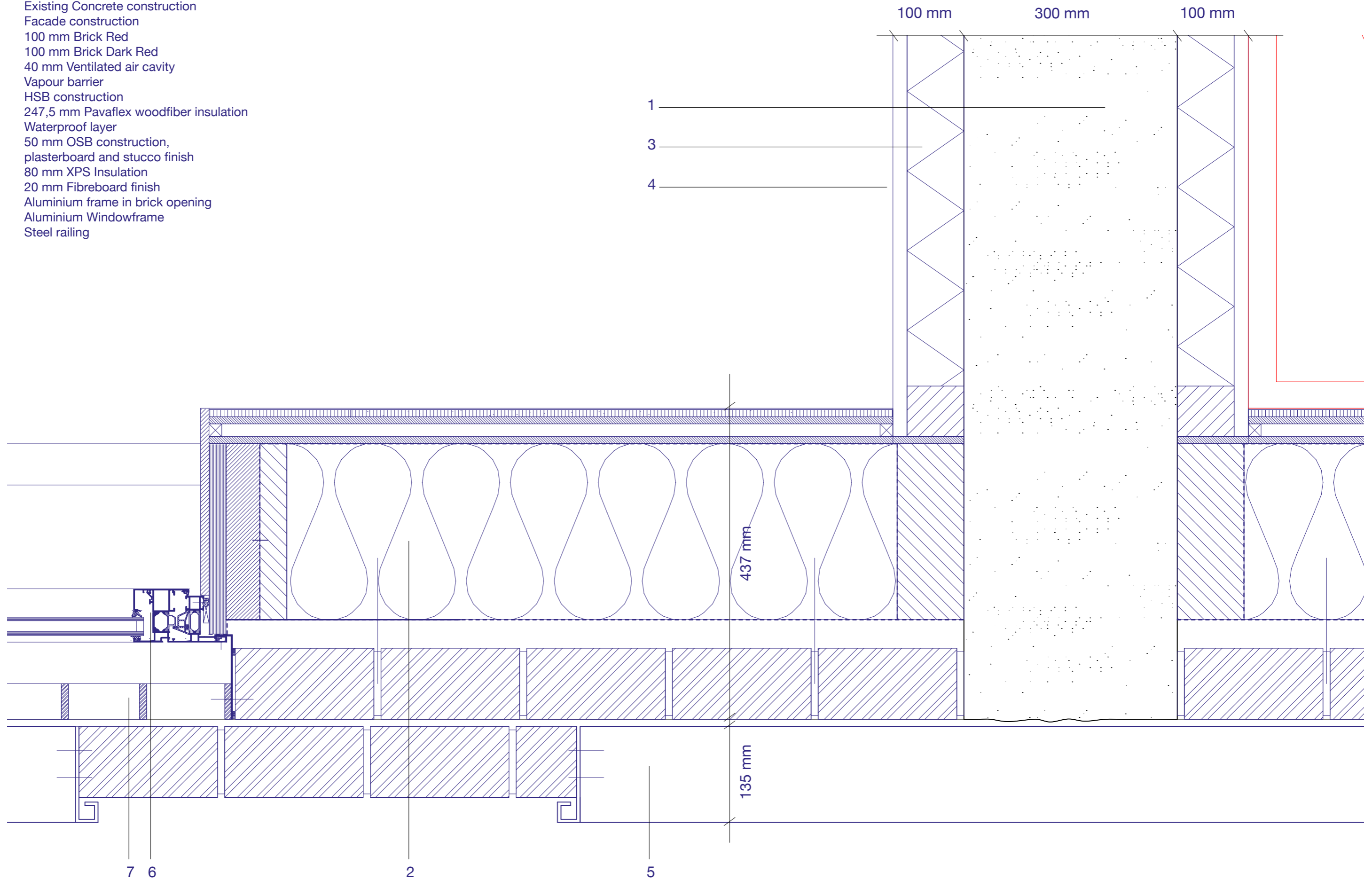
1. Existing Concrete construction (exterior finish)
2. Facade construction
  - 100 mm Brick Red
  - 100 mm Brick Dark Red
  - 40 mm Ventilated air cavity
  - Vapour barrier
  - HSB construction
  - 247,5 mm Pavaflex woodfiber insulation
  - Waterproof layer
  - 50 mm OSB construction, plasterboard and stucco finish
3. 210 mm Brick Red
4. 80 mm XPS Insulation
5. 20 mm Fibreboard finish
6. Aluminium frame in brick opening
7. Aluminium Windowframe





Horizontal detail 1:5 - Facade joint

1. Existing Concrete construction
2. Facade construction
  - 100 mm Brick Red
  - 100 mm Brick Dark Red
  - 40 mm Ventilated air cavity
  - Vapour barrier
  - HSB construction
  - 247,5 mm Pavaflex woodfiber insulation
  - Waterproof layer
  - 50 mm OSB construction, plasterboard and stucco finish
3. 80 mm XPS Insulation
4. 20 mm Fibreboard finish
5. Aluminium frame in brick opening
6. Aluminium Windowframe
7. Steel railing



Facade joint detail

