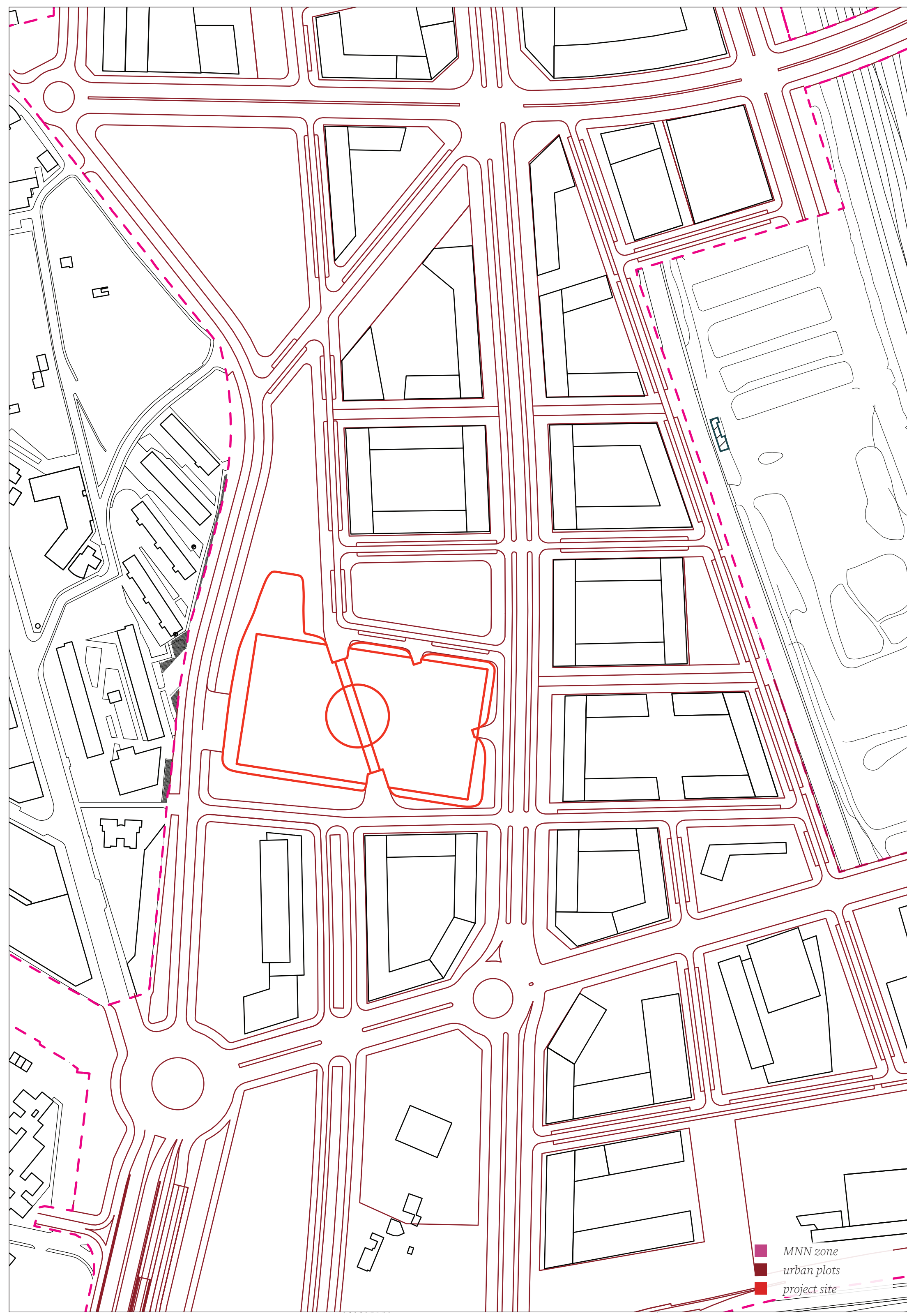
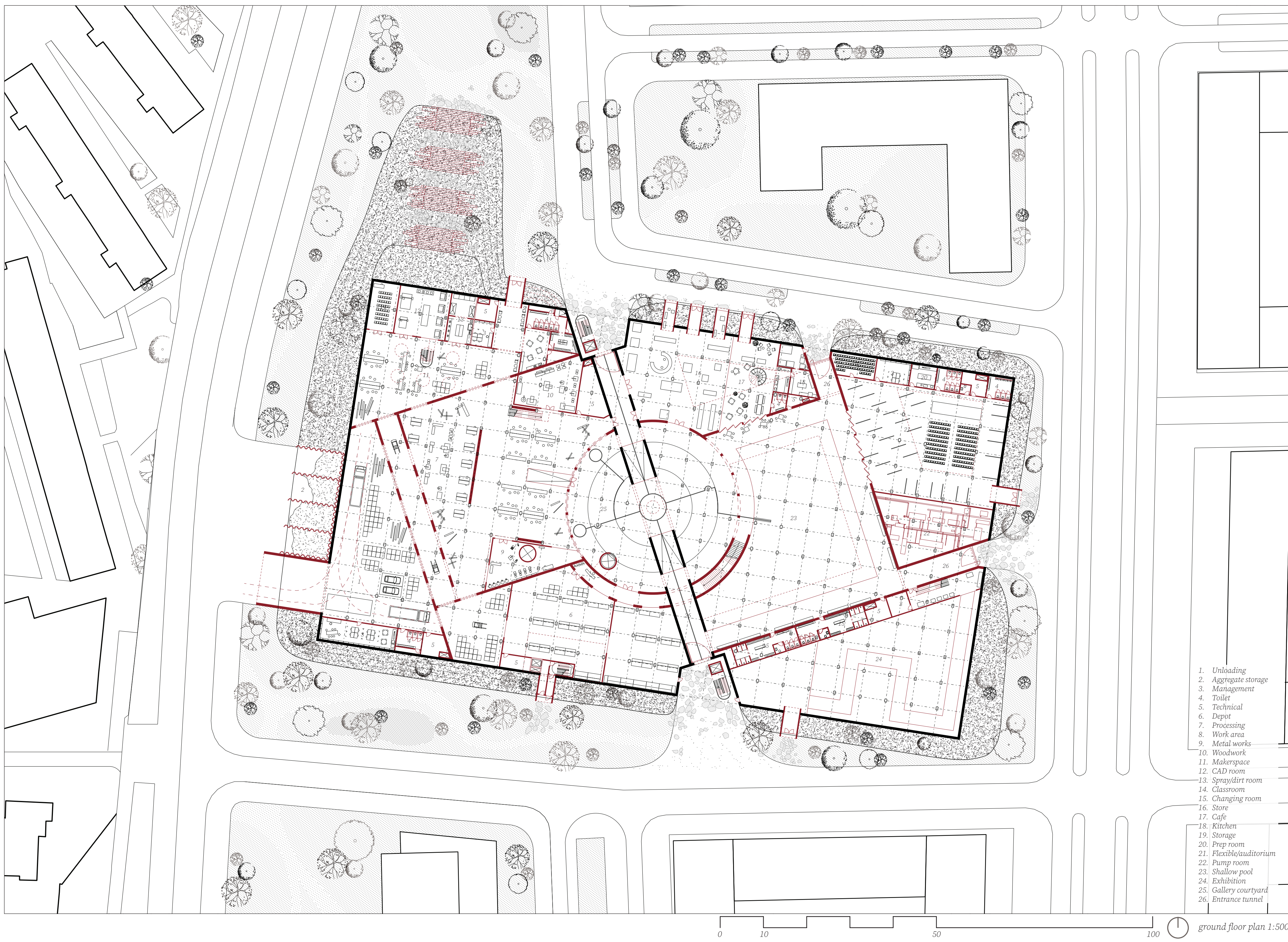


⌚ OLD: existing urban condition 1:2000

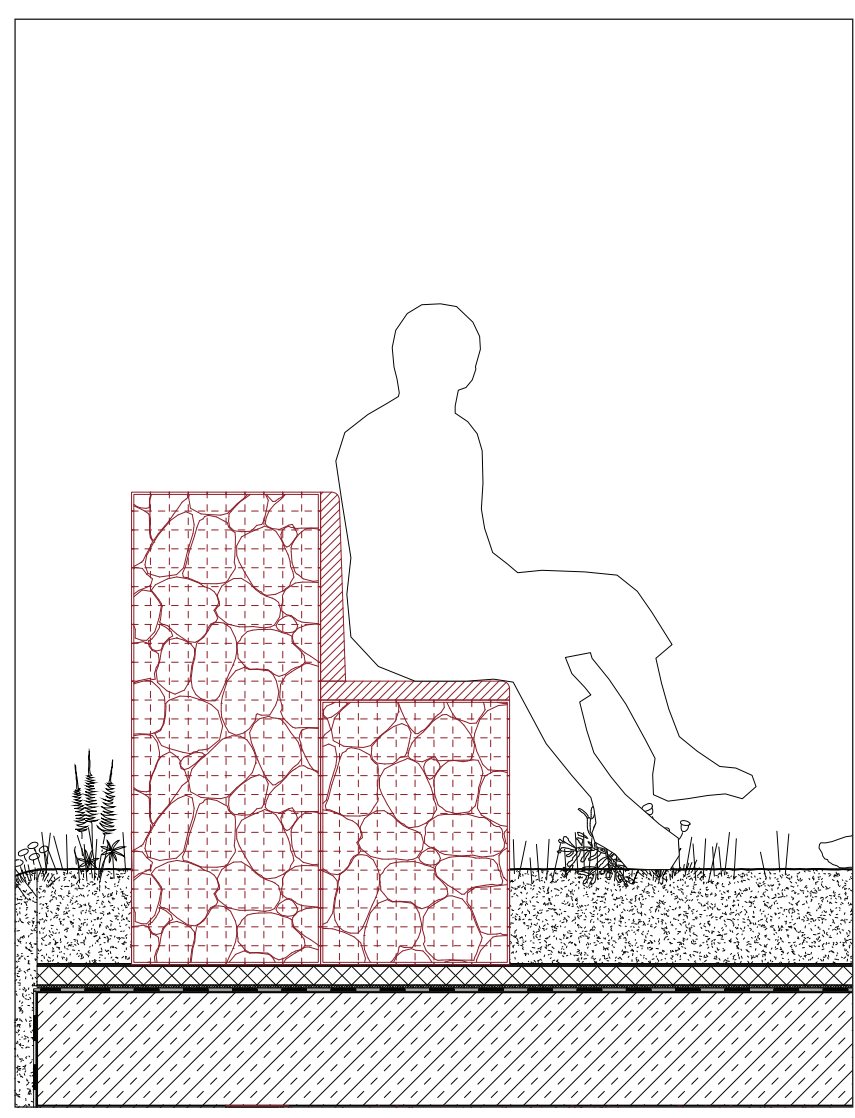


⌚ NEW: Madrid Nuevo Norte Urban Plan repairing water deposit. 1:2000

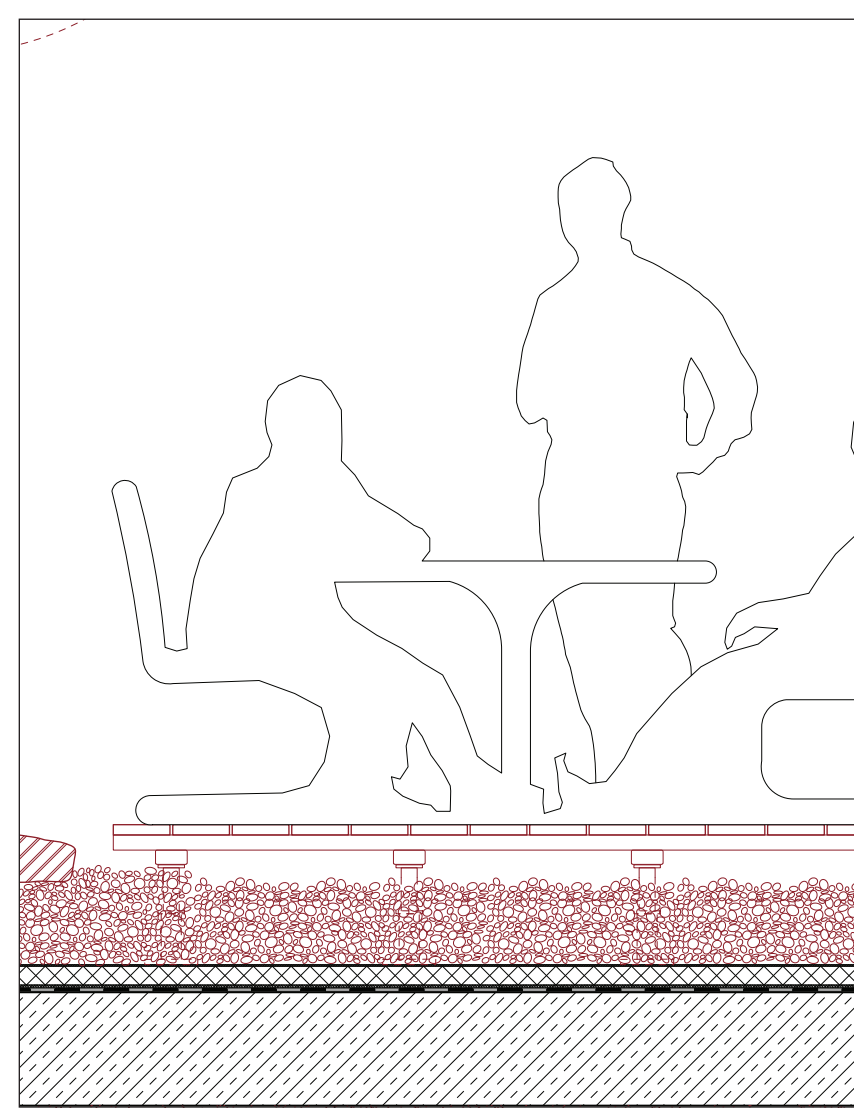


1. Unloading
2. Aggregate storage
3. Management
4. Toilet
5. Technical
6. Depot
7. Processing
8. Work area
9. Metal works
10. Woodwork
11. Makerpace
12. CAD room
13. Spray/dirt room
14. Classroom
15. Changing room
16. Store
17. Cafe
18. Kitchen
19. Storage
20. Prep room
21. Flexible auditorium
22. Pump room
23. Shallow pool
24. Exhibition
25. Gallery courtyard
26. Entrance tunnel

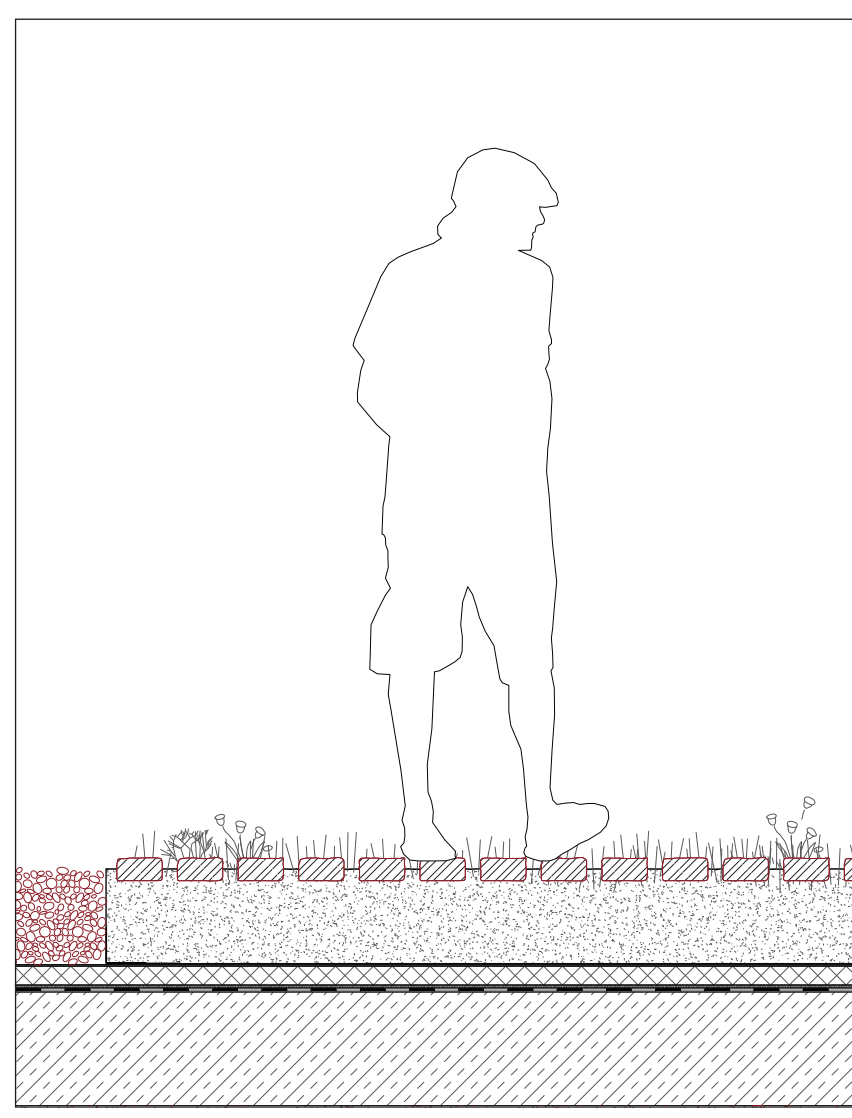
⌚ ground floor plan 1:500



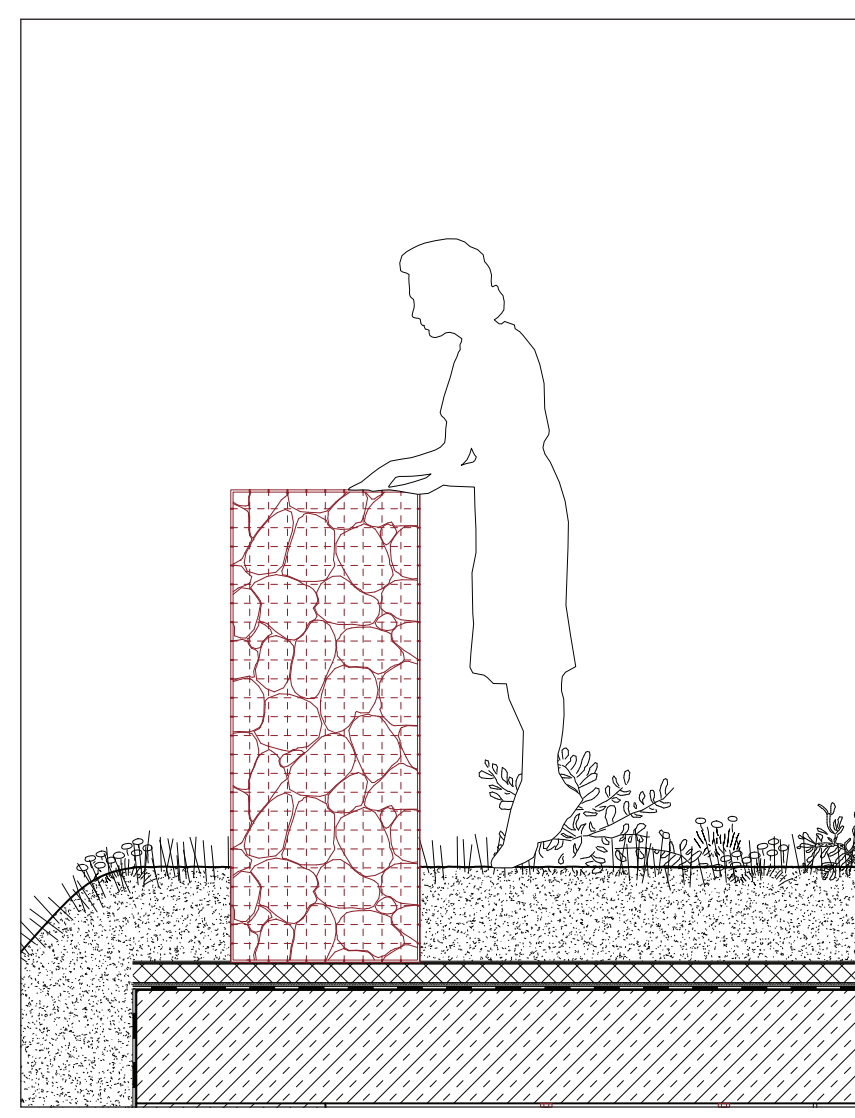
*gabion wall doubled as seating*



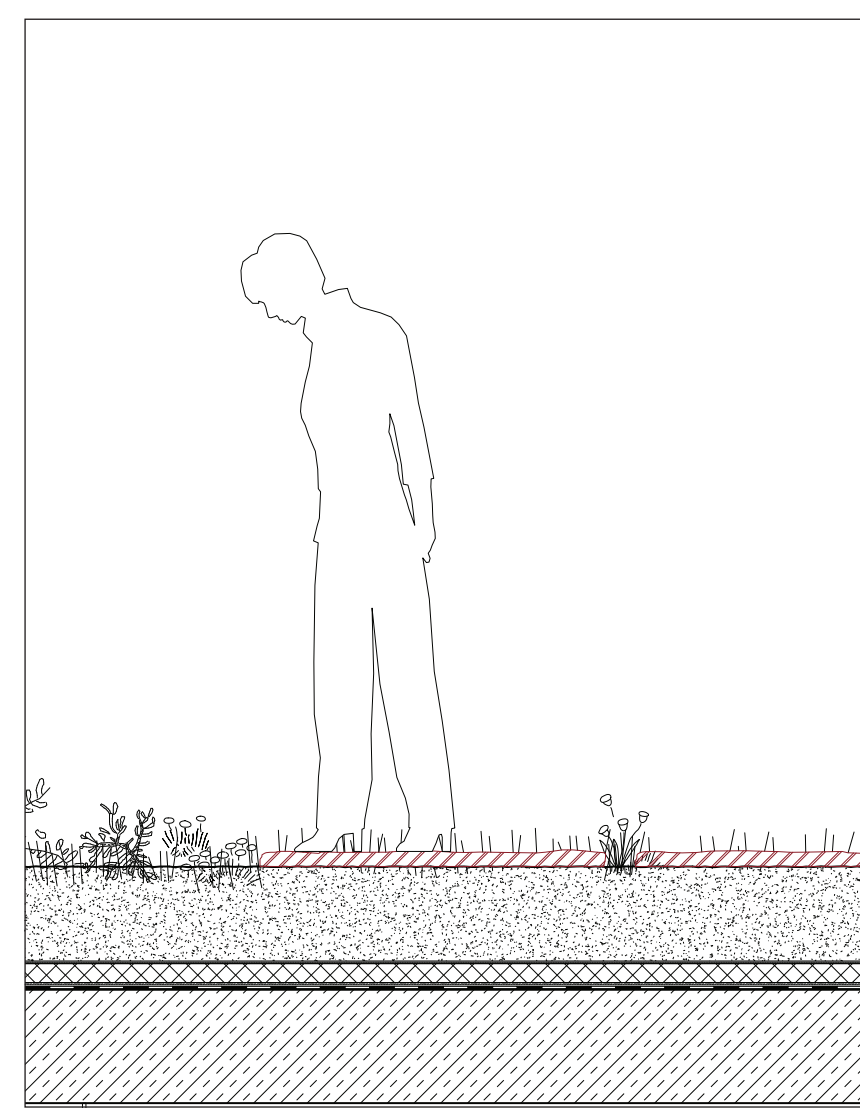
*raised timber deck*



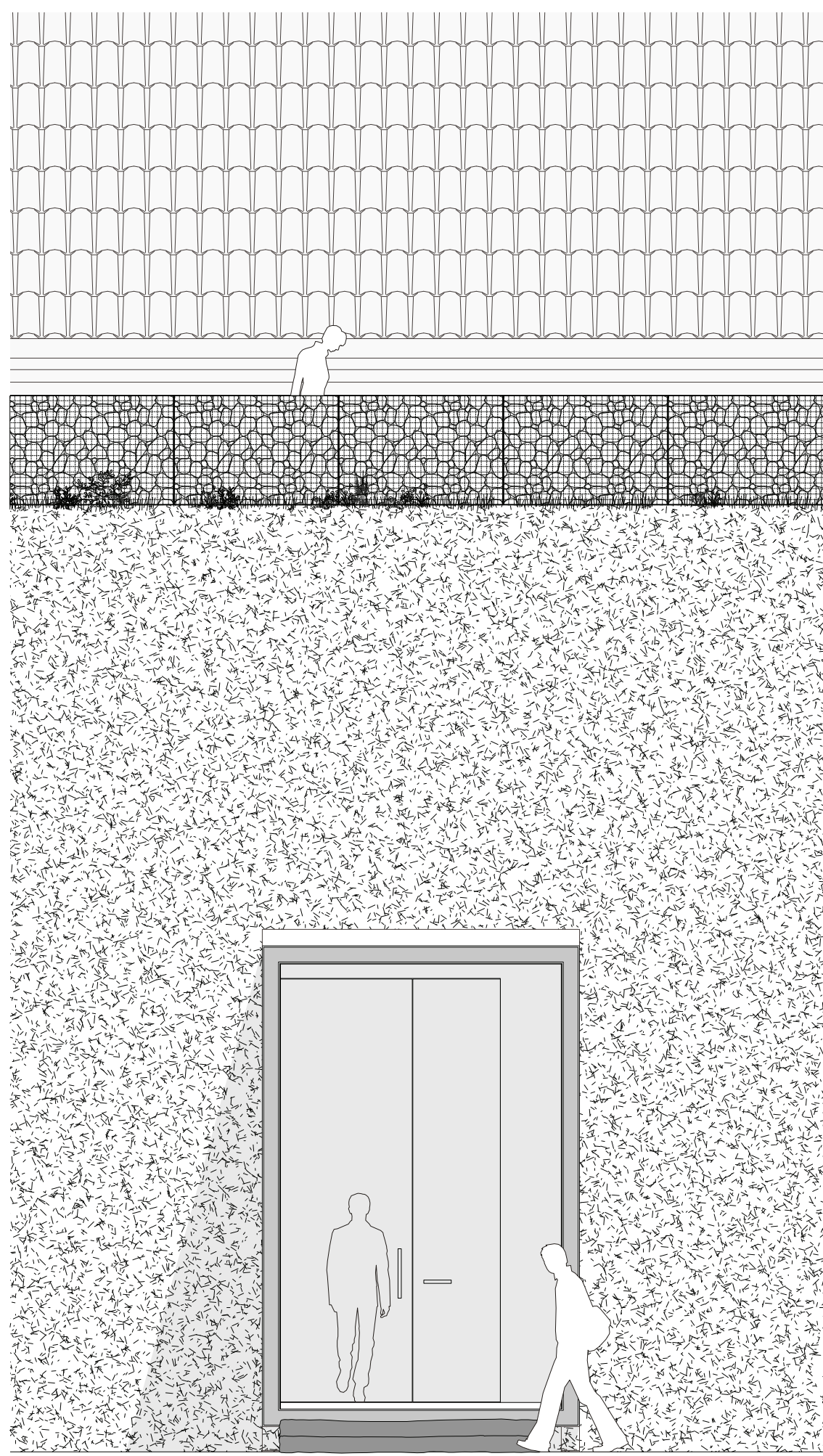
*loosely arranged granite paving*



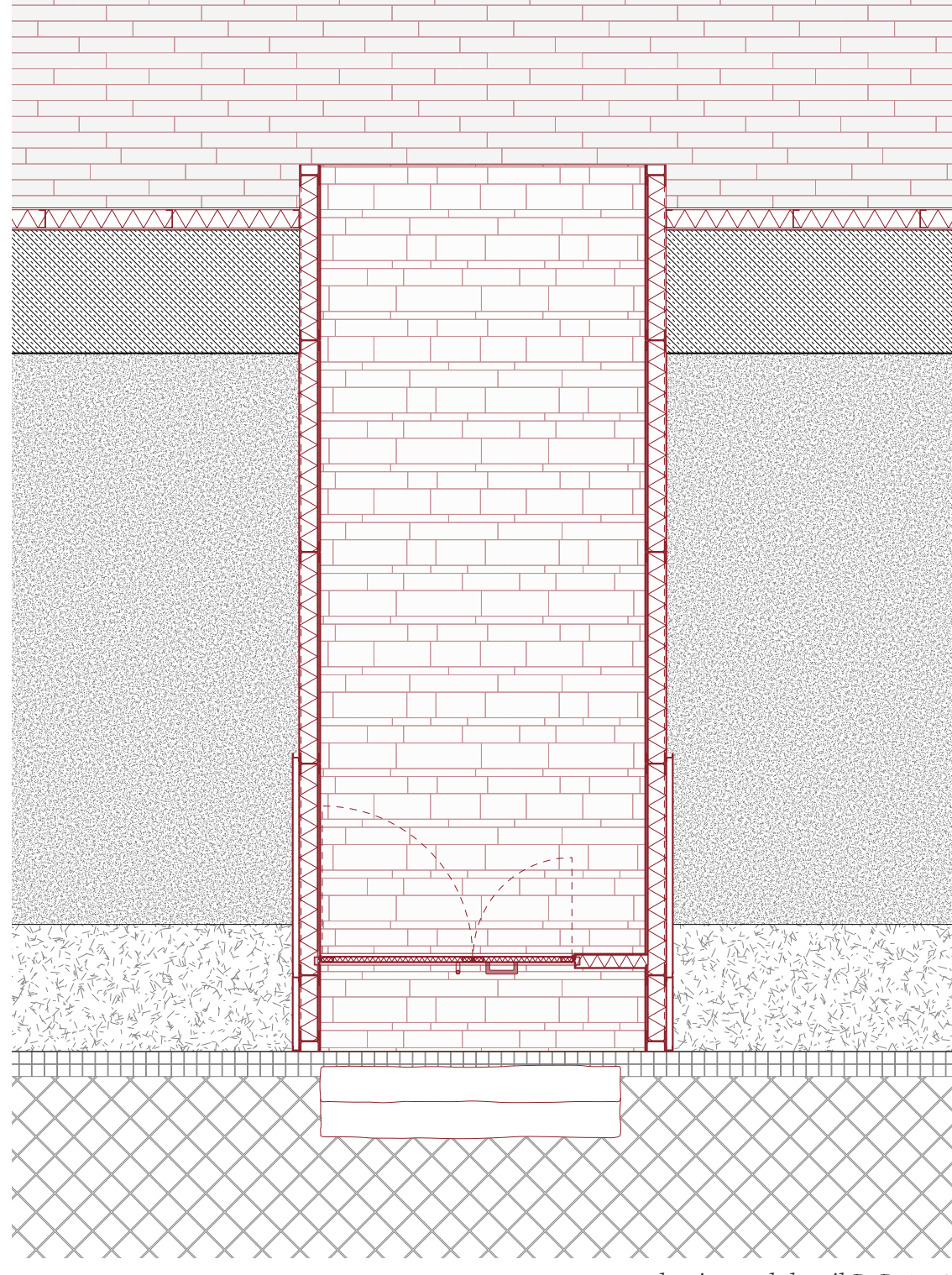
*recycled-concrete ballast gabion wall*



*reclaimed granite offsets*



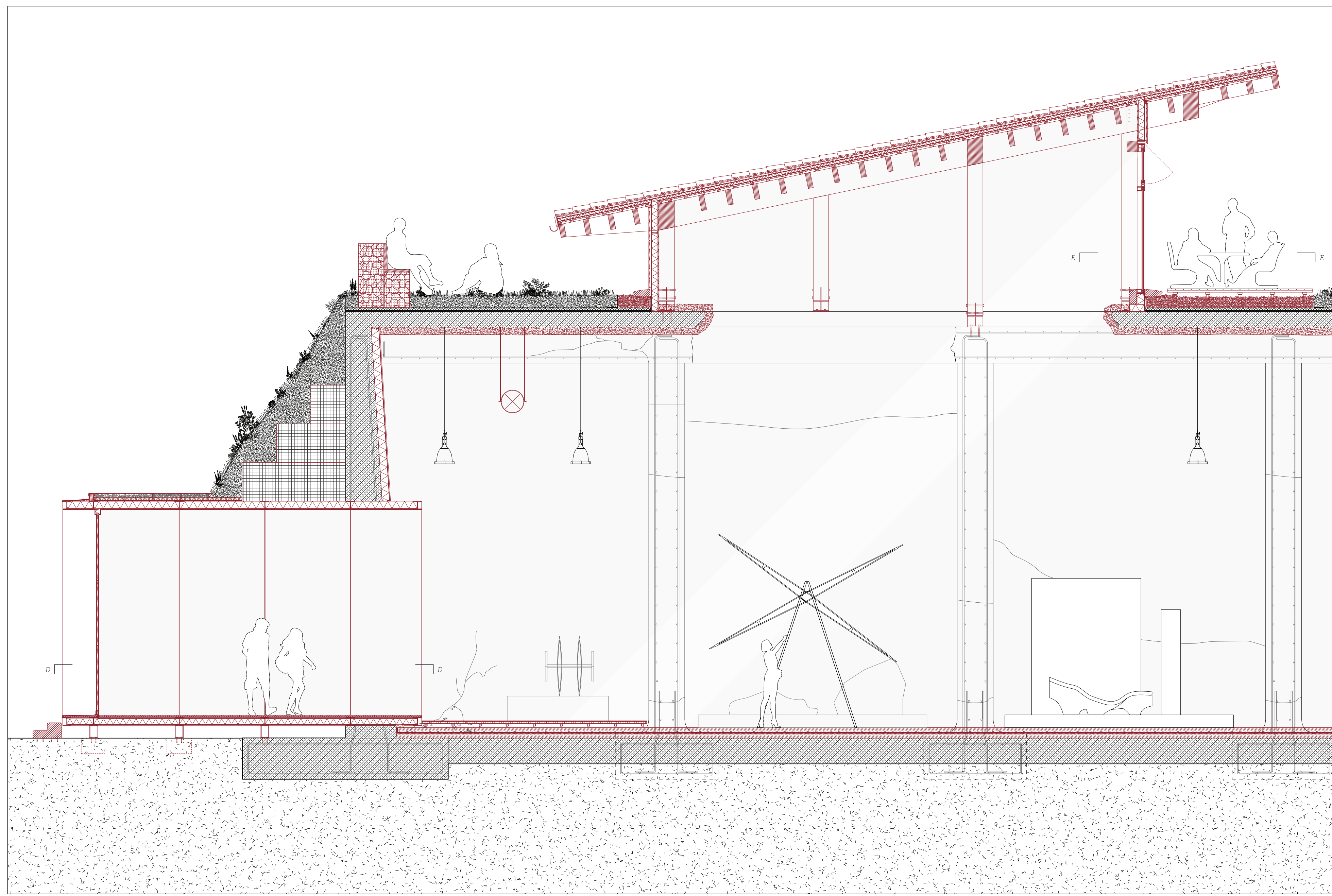
entrance partial elevation 1:50



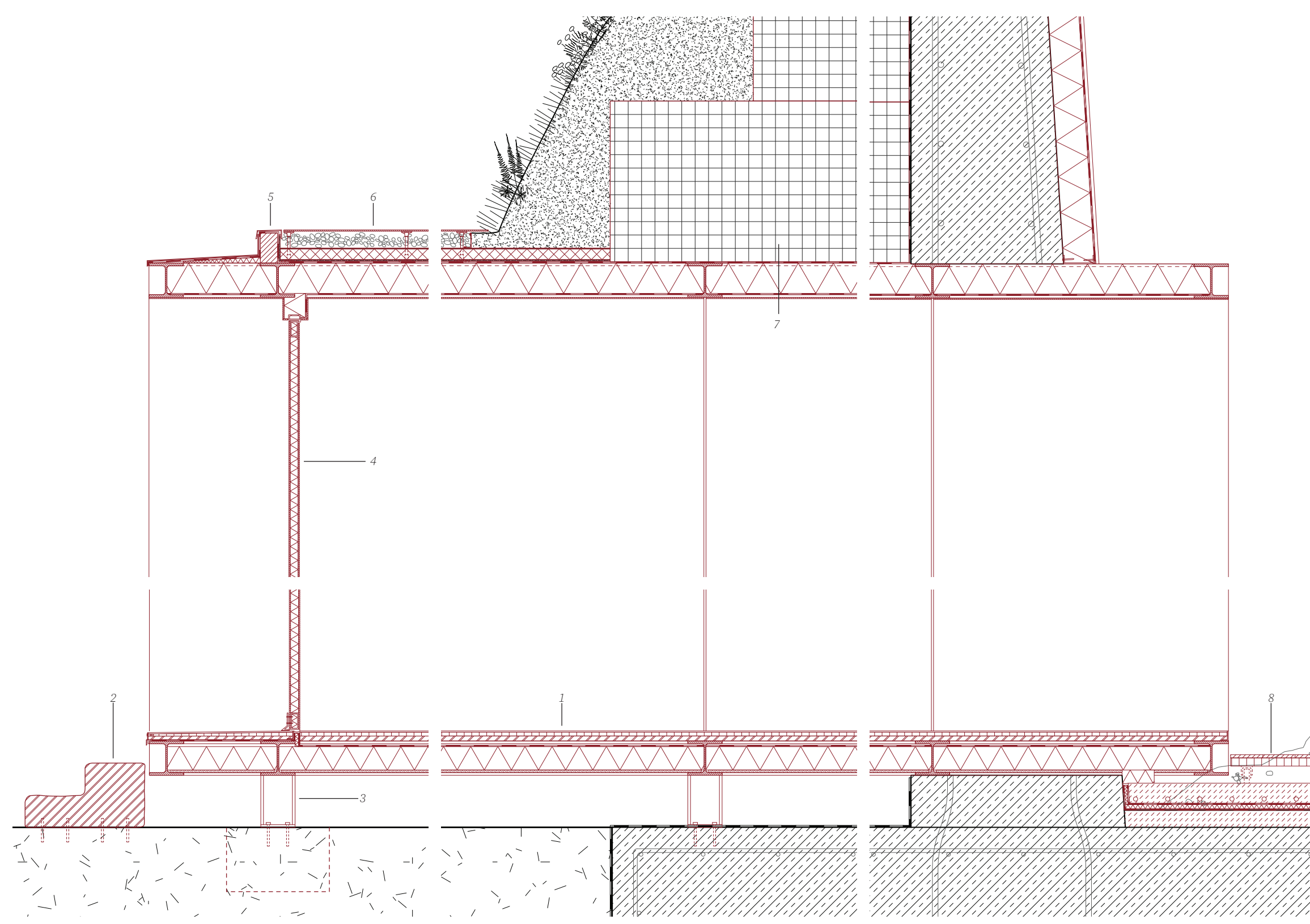
entrance horizontal detail D-D 1:50

Entrance Detail 1:20

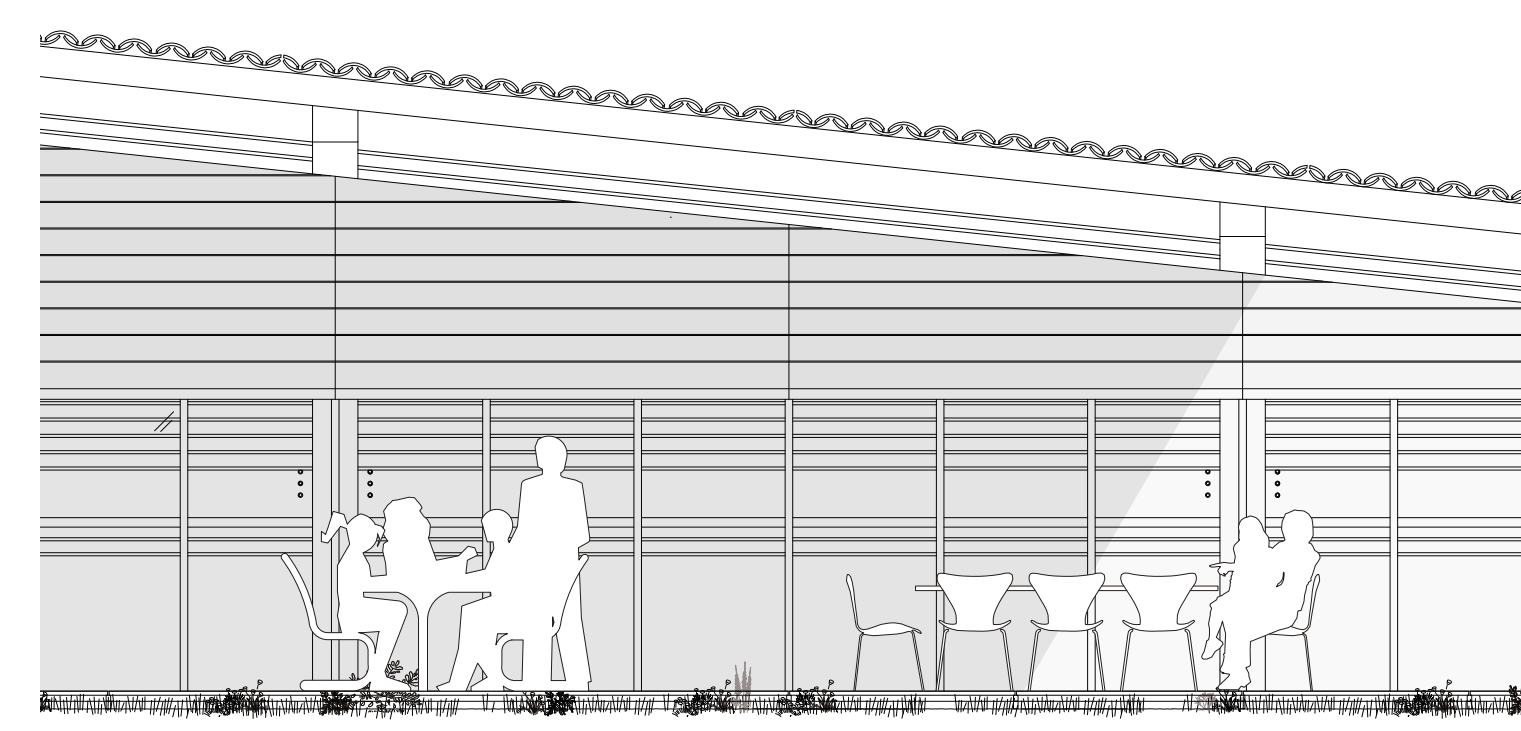
1. Floor system: 6 mm Corten-steel sheeting flooring, 10mm impact-sound insulation, 20mm OSB, 100 mm thermal insulation between steel I-beams, 12 mm damp-proof slab
2. detached granite entrance steps
3. Foundation: steel I-Column to concrete foundation
4. Hinge door: 6mm cornten-steel sheet, inlaid 40mm mineral wool thermal insulation, 6mm cornten-steel sheet
5. Roof edge: Parapet Capping, Sheet Metal Clip, Synthetic Waterproofing, Insulation
6. Roof system: 6mm cornten-steel sheeting, aluminium framing, raised floor pedestals, loose gravel, filter fleece; 50 mm drainage layer, Protection Layer, Roof Waterproofing, 100 mm expanded polystyrene thermal insulation between steel I-beams, vapour barrier, 6mm cornten-steel sheet
7. gfoam retaining wall backfill
8. Interior floor system: 27mm silver fir strip floor, flooring sleepers, 38 mm particle board, 78 mm raised floor beam / post 100 mm heating screed, separating layer, 20 mm EPS thermal insulation, vapour barrier, screed (existing), 500 mm r. c. slab (existing), Fine Granulated Sand, Course Gravel, Earth



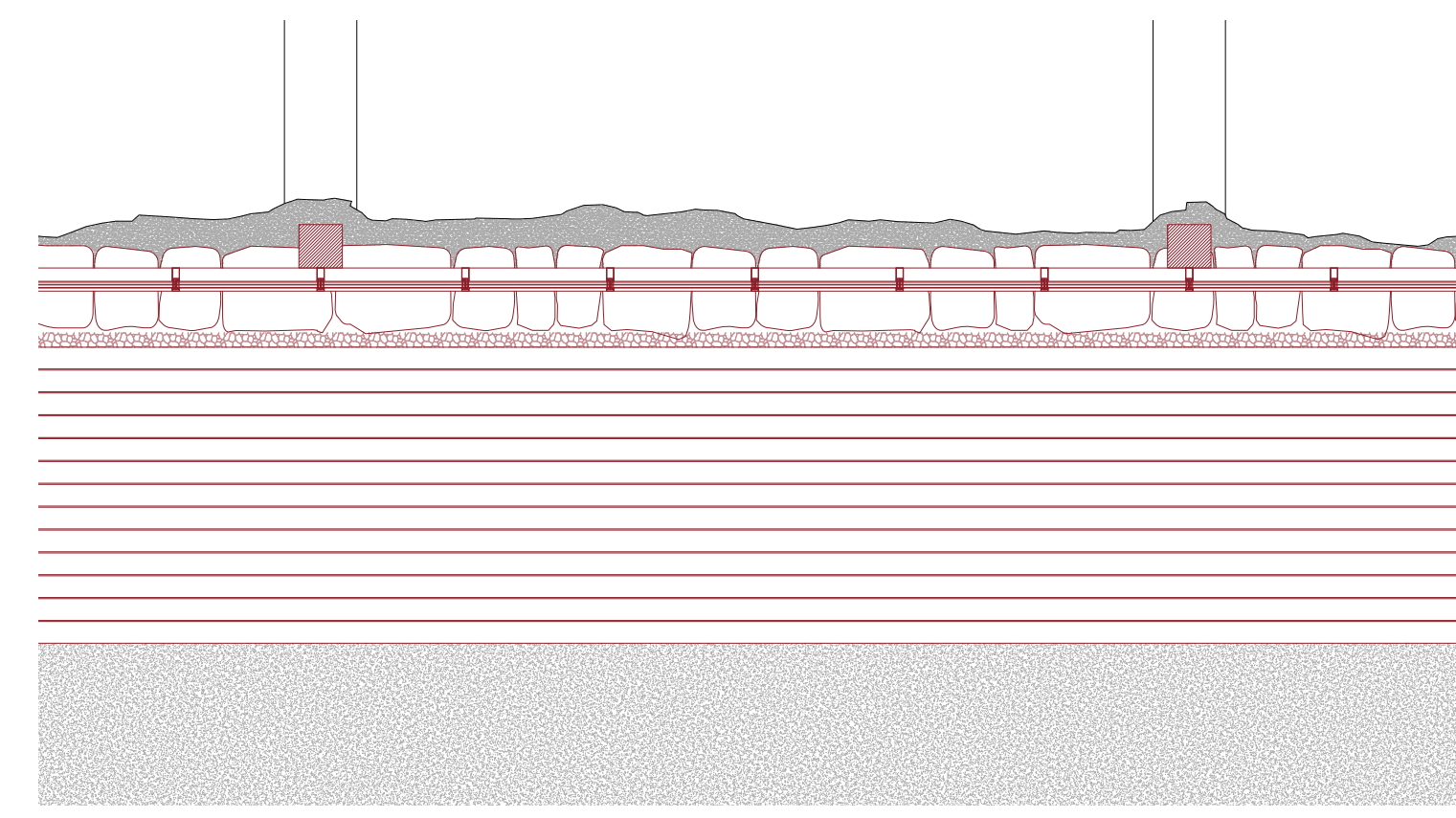
Cafe/Store Partial Section 1:50



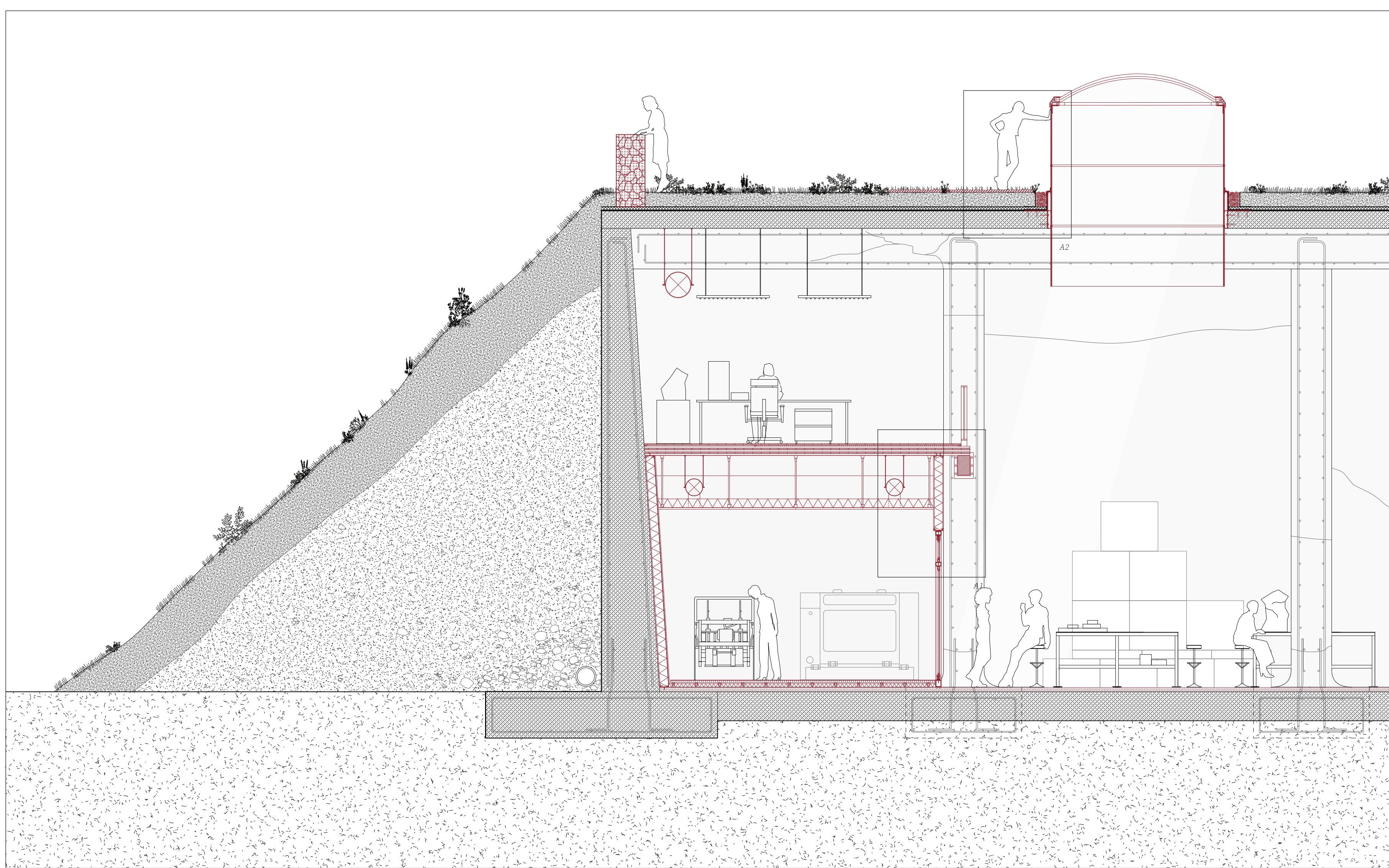
Entrance Detail 1:20



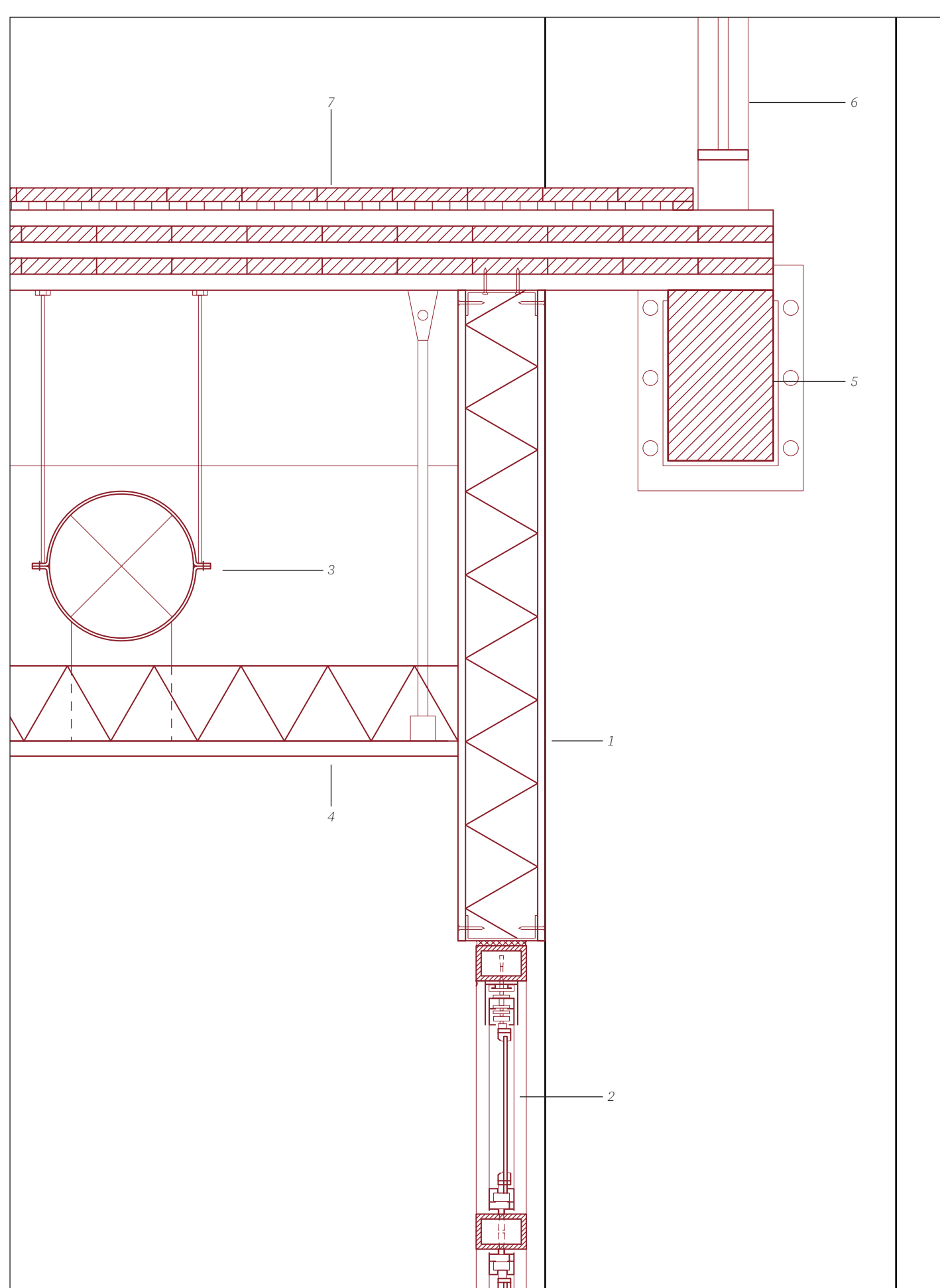
cafe portio partial elevation 1:50



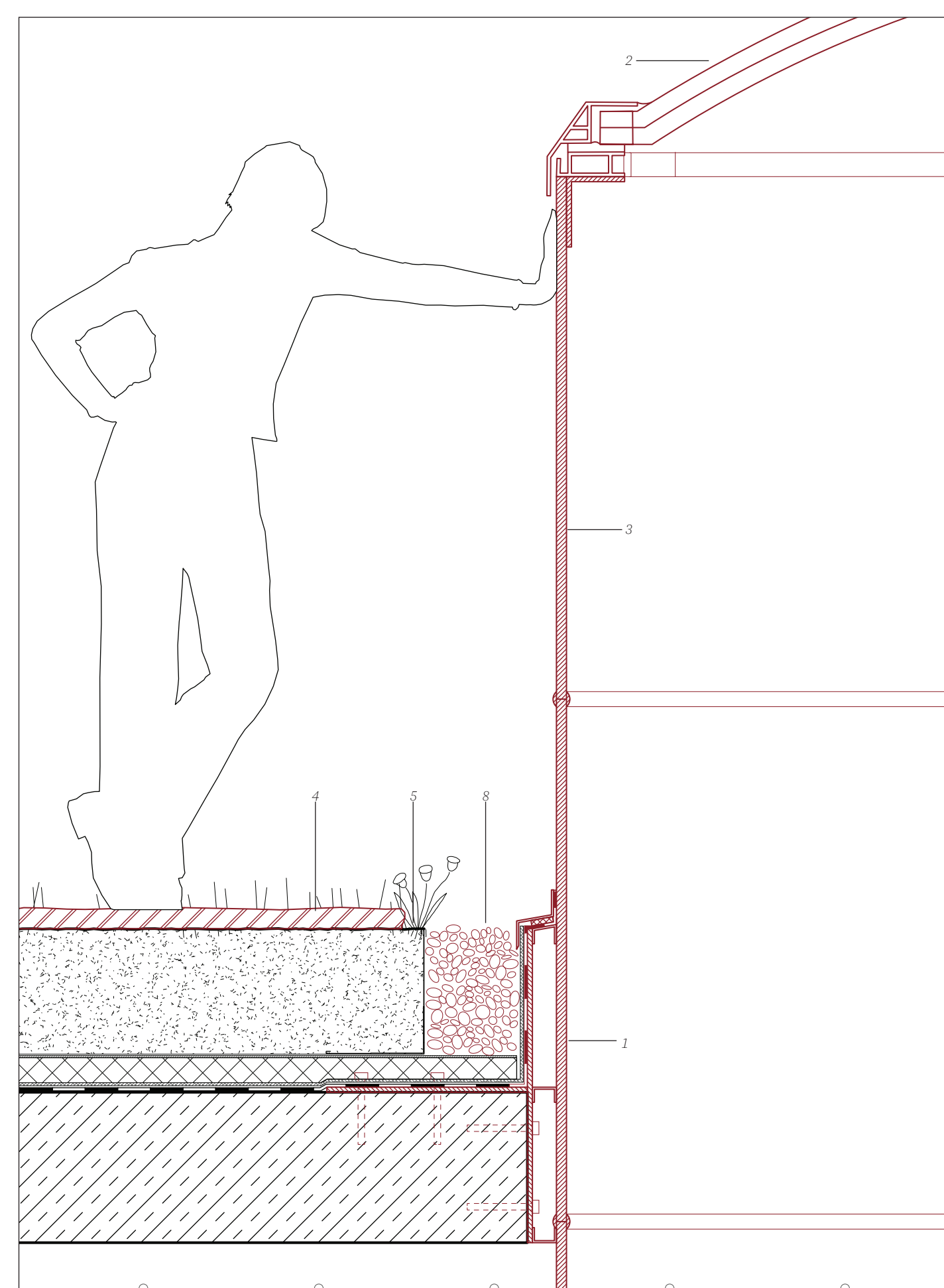
cafe portio horizontal detail E-E 1:50



Maker Space Partial Section 1:50



A1. Mezzanine Detail 1:10



A2. Reclaimed Silo Skylight Detail 1:10

Mezzanine Detail 1:10

1. Wall System: 15mm Reclaimed Stained Plywood Board, Vapour Barrier, 150mm Hemp Insulation between steel studs, 15mm Plywood Board
2. reclaimed office partition metal frame glass wall
3. Ventilation Duct
4. Suspended ceiling system
5. Beam Perpendicular Column Connection (existing): 200/350 timber beam attached to bucket plate with dowel-type fasteners
6. Reclaimed steel railing, refurbished with new blue coating
7. Mezzanine flooring: 27mm silver fir strip floor, flooring sleepers, impact sound insulation 17mm

Reclaimed Silo Skylight Detail 1:10

1. Old-New Skylight Structural system: circular sheet-steel supporting structure fixed with adjustable brackets to reinforced concrete slab (existing), attached metal sections for fixing silo
2. light dome/skylight vent, acrylic glass, 9-ply, attached to reclaimed aggregate silo via steel plate
3. white coated internal silo walls
4. granite offset paving
5. Green roof system: Plant Community, 250 mm intensive substrate layer, filter fleece; 50 mm drainage layer, Protection Layer, Roof Waterproofing (root-resistant), 300mm r.c. Slab (existing), Closed-Cell 150mm Spray-Applied Thermal Insulation (grey tinted)
6. loose gravel edge

