

Cardiovascular Magnetic Resonance for Patients With COVID-19

Petersen, Steffen E.; Friedrich, Matthias G.; Leiner, Tim; Elias, Matthew D.; Ferreira, Vanessa M.; Fenski, Maximilian; Flamm, Scott D.; Fogel, Mark; Tao, Qian; More Authors

DOI

[10.1016/j.jcmg.2021.08.021](https://doi.org/10.1016/j.jcmg.2021.08.021)

Publication date

2022

Document Version

Final published version

Published in

JACC: Cardiovascular Imaging

Citation (APA)

Petersen, S. E., Friedrich, M. G., Leiner, T., Elias, M. D., Ferreira, V. M., Fenski, M., Flamm, S. D., Fogel, M., Tao, Q., & More Authors (2022). Cardiovascular Magnetic Resonance for Patients With COVID-19. *JACC: Cardiovascular Imaging*, 15(4), 685-699. <https://doi.org/10.1016/j.jcmg.2021.08.021>

Important note

To cite this publication, please use the final published version (if applicable).
Please check the document version above.

Copyright

Other than for strictly personal use, it is not permitted to download, forward or distribute the text or part of it, without the consent of the author(s) and/or copyright holder(s), unless the work is under an open content license such as Creative Commons.

Takedown policy

Please contact us and provide details if you believe this document breaches copyrights.
We will remove access to the work immediately and investigate your claim.

Green Open Access added to TU Delft Institutional Repository

'You share, we take care!' - Taverne project

<https://www.openaccess.nl/en/you-share-we-take-care>

Otherwise as indicated in the copyright section: the publisher is the copyright holder of this work and the author uses the Dutch legislation to make this work public.

STATE-OF-THE-ART REVIEW

Cardiovascular Magnetic Resonance for Patients With COVID-19



Steffen E. Petersen, MD, PhD,^{a,b} Matthias G. Friedrich, MD,^c Tim Leiner, MD, PhD,^{d,e} Matthew D. Elias, MD,^f Vanessa M. Ferreira, MD, DPHIL,^g Maximilian Fenski, MD,^{h,i,j} Scott D. Flamm, MD,^k Mark Fogel, MD,^{l,m} Ria Garg, MD,^c Marc K. Halushka, MD, PhD,ⁿ Allison G. Hays, MD,^o Nadine Kawel-Boehm, MD,^{p,q} Christopher M. Kramer, MD,^r Eike Nagel, MD,^s Ntobeko A.B. Ntusi, DPHIL,^{t,u,v} Ellen Ostenfeld, MD, PhD,^{w,x} Dudley J. Pennell, MD,^y Zahra Raisi-Estabragh, MD,^{a,b} Scott B. Reeder, MD, PhD,^z Carlos E. Rochitte, MD, PhD,^{aa} Jitka Starekova, MD,^{bb} Dominika Suchá, MD, PhD,^d Qian Tao, PhD,^{cc,dd} Jeanette Schulz-Menger, MD,^{h,i,j} David A. Bluemke, MD, PhD^{ee}

ABSTRACT

COVID-19 is associated with myocardial injury caused by ischemia, inflammation, or myocarditis. Cardiovascular magnetic resonance (CMR) is the noninvasive reference standard for cardiac function, structure, and tissue composition. CMR is a potentially valuable diagnostic tool in patients with COVID-19 presenting with myocardial injury and evidence of cardiac dysfunction. Although COVID-19-related myocarditis is likely infrequent, COVID-19-related cardiovascular histopathology findings have been reported in up to 48% of patients, raising the concern for long-term myocardial injury. Studies to date report CMR abnormalities in 26% to 60% of hospitalized patients who have recovered from COVID-19, including functional impairment, myocardial tissue abnormalities, late gadolinium enhancement, or pericardial abnormalities. In athletes post-COVID-19, CMR has detected myocarditis-like abnormalities. In children, multisystem inflammatory syndrome may occur 2 to 6 weeks after infection; associated myocarditis and coronary artery aneurysms are evaluable by CMR. At this time, our understanding of COVID-19-related cardiovascular involvement is incomplete, and multiple studies are planned to evaluate patients with COVID-19 using CMR. In this review, we summarize existing studies of CMR for patients with COVID-19 and present ongoing research. We also provide recommendations for clinical use of CMR for patients with acute symptoms or who are recovering from COVID-19. (J Am Coll Cardiol Img 2022;15:685–699) Crown Copyright © 2022 Published by Elsevier on behalf of the American College of Cardiology Foundation. All rights reserved.

From the ^aWilliam Harvey Research Institute, National Institute for Health Research Barts Biomedical Research Centre, Queen Mary University of London, Charterhouse Square, London, United Kingdom; ^bBarts Heart Centre, St Bartholomew's Hospital, Barts Health National Health Service Trust, West Smithfield, London, United Kingdom; ^cDepartment of Medicine and Diagnostic Radiology, McGill University, Montreal, Quebec, Canada; ^dUniversity Medical Center Utrecht, Department of Radiology, Utrecht, the Netherlands; ^eMayo Clinic, Department of Radiology, Rochester, Minnesota, USA; ^fDivision of Cardiology, Department of Pediatrics, The Children's Hospital of Philadelphia, Philadelphia, Pennsylvania, USA; ^gOxford Centre for Clinical Magnetic Resonance Research, Division of Cardiovascular Medicine, British Heart Foundation Centre of Research Excellence, Oxford National Institute for Health Research Biomedical Research Centre, University of Oxford, United Kingdom; ^hUniversitätsmedizin Berlin, corporate member of Freie Universität Berlin and Humboldt-Universität zu Berlin, Working Group on Cardiac Magnetic Resonance, Experimental Clinical Research Centre, Berlin, Germany; ⁱHelios Klinikum Berlin Buch, Department of Cardiology and Nephrology, Berlin, Germany; ^jDeutsches Zentrum für Herz-Kreislaufforschung-Partnersite-Berlin, Berlin, Germany; ^kCardiovascular Imaging, Imaging and Heart, Vascular, and Thoracic Institutes, Cleveland Clinic, Cleveland, Ohio, USA; ^lDepartment of Pediatrics (Cardiology) and Radiology, The Children's Hospital of Philadelphia, Perelman School of Medicine at the University of Pennsylvania, Philadelphia, Pennsylvania, USA; ^mDepartment of Radiology, The Children's Hospital of Philadelphia, Perelman School of Medicine at the University of Pennsylvania, Philadelphia, Pennsylvania, USA; ⁿDepartment of Pathology, Johns Hopkins University School of Medicine, Baltimore Maryland, USA; ^oDivision of Cardiology, Department of Medicine, Johns Hopkins University School of Medicine, Baltimore, Maryland, USA; ^pDepartment of Radiology, Kantonsspital Graubünden, Chur, Switzerland; ^qInstitute for Diagnostic Interventional Pediatric Radiology, Inselspital, Bern, University Hospital of Bern, Switzerland; ^rCardiovascular Division, Departments of Medicine

**ABBREVIATIONS
AND ACRONYMS****CMR** = cardiovascular magnetic resonance**cTn** = cardiac troponin**ECG** = electrocardiogram**ECV** = extracellular volume**LGE** = late gadolinium enhancement**LV** = left ventricle**MIS-C** = multisystem inflammatory syndrome in children**RV** = right ventricle

As of July 2021, the worldwide number of confirmed COVID-19 cases has reached more than 180 million, with almost 4 million related deaths (1). SARS-CoV-2, which causes COVID-19, preferentially infects epithelial cells of the respiratory tract via the angiotensin-converting enzyme 2 (ACE2) receptor (2). However, both the heart and myocardial vessels are also potential targets of SARS-CoV-2 via the ACE2 receptor. Myocardial injury in association with COVID-19 has been linked to greater risk of in-hospital mortality (3).

Cardiovascular magnetic resonance (CMR) is the reference standard for the evaluation of myocardial structure and function. In addition, CMR is unique in its capability to probe myocardial tissue composition. The American College of Cardiology, the European Society of Cardiology, and the Society for Cardiovascular Magnetic Resonance concur that CMR is a potentially valuable diagnostic tool in patients with COVID-19 presenting with myocardial injury and evidence of cardiac dysfunction (4-7).

The purpose of this report is to review the use of CMR to evaluate cardiac disease in association with COVID-19. (The Society of Cardiovascular Magnetic Resonance has endorsed the contents of this report.) We assess the clinical evidence for myocardial injury and pathologic findings of COVID-19 relevant to the diagnostic use of CMR for patients. Next, we summarize reports to date that have used CMR for patients and athletes recovering from COVID-19. Expert opinion is presented regarding the appropriate use of CMR in the setting of COVID-19.

BACKGROUND: MYOCARDIAL INJURY IN COVID-19

MANIFESTATIONS OF MYOCARDIAL INJURY. Reports of myocardial injury in association with COVID-19 have included acute ischemic injury (type 1 myocardial infarction [8]) as well as nonischemic injury (ie, myocarditis) (9-11), stress cardiomyopathy (12), acute heart failure (13), and secondary cardiac injury caused by sepsis and critical illness (14). Mechanisms of myocardial injury may be direct (viral infection, thought to be less common) or indirect via systemic inflammatory response. Activation of a proinflammatory response secondary to an immune response to SARS-CoV-2 results in cytokine release and a prothrombotic state (15,16). Giustino et al (17) reported 305 patients hospitalized with COVID-19 from 7 hospitals in Milan and New York. Myocardial injury (defined as cardiac troponin [cTn] elevation above the 99th percentile upper reference limit [18]) at any time during admission was common—present in 62% of patients. Elevated cTn was associated with older age, pre-existing cardiovascular disease, COVID-19 severity, and clinical deterioration (15,19). In other studies, patients with elevated cTn were at higher risk for adverse events during hospitalization, including a higher death rate, acute respiratory distress syndrome, and malignant arrhythmias (19-21).

Myocardial injury in patients with COVID-19 can be detected by cardiac imaging. Giustino et al (17) indicated that nearly two thirds of patients with myocardial injury by cTn had major echocardiographic abnormalities. Abnormalities included left ventricle (LV) wall motion abnormalities (24%), right ventricular (RV) dysfunction (26%), global LV dysfunction (18%), diastolic dysfunction grades II or III (13%), and pericardial effusion (7%). In-hospital mortality was 5.2% without cardiac involvement but

and Radiology and Medical Imaging, University of Virginia Health System, Charlottesville, Virginia, USA; ⁵Institute for Experimental and Translational Cardiovascular Imaging, DZHK Center for Cardiovascular Imaging, University Hospital Frankfurt, Frankfurt AM Main, Germany; ⁶Division of Cardiology, Department of Medicine, University of Cape Town, Cape Town, South Africa; ⁷Groote Schuur Hospital, Cape Town, South Africa; ⁸Hatter Institute for Cardiovascular Research in Africa, University of Cape Town, Cape Town, South Africa; ⁹Department of Clinical Sciences Lund, Clinical Physiology, Lund University, Lund, Sweden; ¹⁰Skåne University Hospital, Lund, Sweden; ¹¹National Heart and Lung Institute, Imperial College, Cardiovascular Magnetic Resonance Unit, Royal Brompton Hospital, London, United Kingdom; ¹²Departments of Radiology, Medical Physics, Biomedical Engineering, Medicine, and Emergency Medicine, University of Wisconsin, Madison, Wisconsin, USA; ¹³Heart Institute, InCor, University of São Paulo Medical School and Heart Hospital, Hospital do Coração, São Paulo, Brazil; ¹⁴Department of Radiology, University of Wisconsin, Madison, Wisconsin, USA; ¹⁵Department of Imaging Physics, Delft University of Technology, Delft, the Netherlands; ¹⁶Division of Imaging Processing, Department of Radiology, Leiden University Medical Center, Leiden, the Netherlands; and the ¹⁷Departments of Radiology and Medical Physics, University of Wisconsin, Madison, Wisconsin, USA.

Paaladinesh Thavendiranathan, MD, served as the Guest Editor for this paper.

The authors attest they are in compliance with human studies committees and animal welfare regulations of the authors' institutions and Food and Drug Administration guidelines, including patient consent where appropriate. For more information, visit the [Author Center](#).

TABLE 1 CMR Terminology and Methods for Tissue Characterization

CMR Method or Terminology	Definition	CMR Application	Interpretation in Patients With COVID-19
T₁ relaxation parameters^a			
T ₁ -weighted images	Images dominated by T ₁ relaxation magnetic relaxation. Signal intensity is relative (not quantitative).	Typically used for depiction of myocardial anatomy. Post-gadolinium administration images depict the distribution of the intravenous contrast agent	
Native T ₁ mapping	Pixel-by-pixel presentation of T ₁ values (in milliseconds) of the myocardium without a gadolinium-based contrast agent.	Increased T ₁ times indicate increased interstitial space (eg, collagen or amyloid deposits) or increased (intracellular or extracellular) tissue water (ie, myocardial edema). Decreased T ₁ times indicate intracellular lipid or iron deposition.	Acute: evidence for myocardial injury Chronic: evidence for myocardial fibrosis/scar
Late gadolinium enhancement	T ₁ -weighted images acquired 10-15 min after intravenous administration of a gadolinium-based contrast agent.	Infarction/scar: typically subendocardial involvement in a coronary artery distribution. Nonischemic necrosis/scar: typically mid or epicardial myocardial involvement, not in a coronary artery distribution.	
ECV fraction	Proportion of the ECV in the myocardium compared to total myocardial volume. Estimated using native T ₁ and postgadolinium T ₁ mapping methods	Increased ECV is present in diffuse myocardial fibrosis and myocardial inflammation. ECV may also be elevated in infiltrative disease such as amyloidosis.	
T₂ relaxation parameters^b			
T ₂ -weighted images	Images dominated by effects of T ₂ magnetic relaxation. Signal intensity is relative (not quantitative).	Signal intensity is markedly increased in areas of tissue edema.	Evidence for myocardial edema may be associated with inflammation
T ₂ mapping	Pixel-by-pixel presentation of T ₂ values (in milliseconds) of the myocardium.	Increased T ₂ time indicates myocardial edema.	
^a T ₁ relaxation, or longitudinal magnetic relaxation time, in milliseconds. After a radiofrequency pulse, T ₁ is the time constant for regrowth of (1 - 1/e) or approximately 63% of its initial maximum magnetic strength. ^b T ₂ relaxation, or transverse magnetic relaxation time, in milliseconds. After a radiofrequency pulse, T ₂ is the time constant for transverse magnetization to fall to approximately 37% (1/e) of its initial value. CMR = cardiac magnetic resonance; ECV = extracellular volume.			

rose to 32% in those with myocardial injury and echocardiographic abnormalities (17). These findings were supported by Rath et al (22), who showed a significantly higher mortality in patients with impaired LV ejection fraction, impaired RV function, and tricuspid regurgitation. In 100 consecutive individuals hospitalized with COVID-19, Szekely et al (23) reported RV dilatation and dysfunction in 39% of patients. Dweck et al (24) performed a prospective multicenter survey of 1,216 hospitalized acute COVID-19 patients with clinical indications for echocardiography. They reported abnormal echocardiograms in 55% of patients. In most cases, the underlying cause of LV abnormalities was not identified. Thus, although echocardiography is a first-line imaging tool, its ability to discern specific diagnoses is suboptimal.

Given the high rate of acute COVID-19-associated cardiac abnormalities, concern exists for long-term myocardial injury in convalescent patients. In a report of 1,733 previously hospitalized patients evaluated 6 months after symptom onset, 11% of patients reported palpitations and 5% reported ongoing chest pain, raising the question of long-term cardiac injury (25). In a multicenter study, cardiopulmonary damage

in 109 hospitalized patients and 37 outpatients recovering from COVID-19 was assessed (26). At follow-up, echocardiography revealed a high rate of diastolic dysfunction (55%), but only 2.8% had reduced LV ejection fraction; N-terminal pro-brain natriuretic peptide was elevated in 23% of patients with COVID-19 (26).

HISTOPATHOLOGY EVIDENCE FOR MYOCARDIAL INJURY IN COVID-19.

The histopathologic basis of myocardial injury caused by COVID-19 has been studied. In the heart, the ACE2 receptor is more highly expressed in pericytes that line the vasculature compared to myocytes (27). Basso et al (28) reported myocarditis (defined as lymphocytic infiltration plus myocyte necrosis) in 3 of 21 (14%) selected autopsy cases of COVID-19. Halushka and Vander Heide (29) reviewed 22 publications describing autopsy results in 277 patients who died of COVID-19. These investigators suggested that myocarditis was infrequent (1.4%). However, at least 1 acute, potentially COVID-19-related cardiovascular histopathology finding (eg, micro- or macrovascular thrombi, interstitial inflammation, and/or intraluminal megakaryocytes) was common (48% of cases)

TABLE 2 Summary of Studies of CMR in Patients After Recovery From COVID-19

First Author (Ref. #) Study Design	Number of Cases	Men, %	Age, y ^a	Timing of CMR	Patient Characteristics During Acute COVID-19	Patient Characteristics During the Postacute Stage
Ng et al (37) Retrospective observational study	16	56	68 (53-69)	56 days (median) after recovery	<ul style="list-style-type: none"> All hospitalized 94% (n = 15) had mild to moderate symptoms On admission, 7 (44%) patients had troponin elevation, and 88% (n = 14) had ECG abnormalities 	At ≥2 wk postdischarge, 11 (69%) patients were asymptomatic; 5 (31%) had symptoms such as cough, shortness of breath, and mild chest pain.
Puntmann et al (38) Prospective observational cohort study	100	53	49 ± 14	71 (64-92) days from positive test	<ul style="list-style-type: none"> 67% recovered at home 18% asymptomatic, 49% mild to moderate symptoms, 33% severe disease 15% had significant TnT elevation 	On day of CMR, 17 patients reported atypical chest pain, and 20 reported palpitations. Compared with pre-COVID-19 status, 36 patients (36%) reported ongoing shortness of breath and exhaustion; 5% had significant TnT elevation at time of CMR.
Huang et al (44) Retrospective observational study	26	38	38 (32-45)	47 (36-58) days from onset of cardiac symptoms	<ul style="list-style-type: none"> All hospitalized 85% (n = 22) with moderate and 15% (n = 4) severe symptoms 81% (n = 21) required supplemental oxygen; of these, 3 (12%) required NIV or high-flow oxygen 	All had ≥1 cardiac symptoms (chest pain: 12%; palpitation: 88%; chest distress 23%) after discharge. Patients with a history of CAD or myocarditis were excluded. None had elevated hsTnT at the time of CMR.
Raman et al (45) Prospective observational cohort study	58	59	55.4 ± 13.2	2.3 months (IQR: 2.1-2.5) after COVID-19 onset	<ul style="list-style-type: none"> All hospitalized with moderate or severe COVID-19 36% (n = 21) required critical care, 21% were intubated, 3% had dialysis, and 7% required inotropic support 5% (n = 3) had significantly elevated hsTnT^b 	Individuals with pre-existing severe/end-stage multisystem comorbidities were excluded.
Li et al (40) Prospective observational cohort study	40	60	54 ± 12	158 ± 18 days after admission and 124 ± 17 days after discharge	<ul style="list-style-type: none"> Hospitalized with moderate (60%) or severe (40%) COVID-19 	Discharged for ≥90 d. Individuals with pre-existing CAD, myocarditis, abnormal ECG findings, abnormal blood cardiac biomarker levels, or cardiac symptoms were excluded.
Wang et al (41) Prospective observational cohort study	44	43.2	47.6 ± 13.3	102.5 ± 20.6 days from discharge	<ul style="list-style-type: none"> Hospitalized with moderate (n = 32 [73%]), severe (n = 11 [25%]), or critically ill (n = 1 [2%]) symptoms 1 patient had abnormal ECG at admission 9.1% (n = 4) and 43.2% (n = 19) had renal and liver injury, respectively 	Recovered and discharged for 12 wk. Individuals with the following pre-existing conditions were excluded: uncontrolled hypertension, CAD, valvular disease, atrial fibrillation, heart failure, myocarditis, cardiomyopathy, and pacemaker placement.
Knight et al (42) Prospective observational study	29	83	64 ± 9	37 ± 10 days after diagnosis	<ul style="list-style-type: none"> Hospitalized with COVID-19 and unexplained elevated hsTnT^b during admission 10 patients (34%) required critical care ventilatory support 	Recovered and discharged from the hospital. Individuals with ACS, PE, or known cardiac pathology likely to cause scar and those aged ≥80 y were excluded.
Kotecha et al (43) Prospective observational study Note: This study includes the 29 patients in a study by Knight et al (42)	148	56	64 ± 12	68 days after diagnosis	<ul style="list-style-type: none"> Hospitalized with moderate to severe COVID-19 and hsTnT^b elevation during admission 32% (n = 48) required critical care or ventilatory support 	Recovered and discharged from the hospital. Patients with medical unsuitability for CMR assessed by the referring clinician (eg, severe comorbidities, frailty) or with ACS as the primary reason for hospitalization were excluded.
Joy et al (39) Prospective observational study	74	42	37 (31-48)	6 months postinfection	<ul style="list-style-type: none"> Seropositive health care workers 11 (15%) were asymptomatic, the remainder had mild symptoms 1 patient was admitted to hospital 	At the time of CMR, 16 (11%) reported symptoms: 5 (3%) sore throat, 4 (3%) fatigue, 4 (3%) rhinorrhea, and 3 (2%) shortness of breath, with no difference between seropositive and seronegative subjects (8% vs 13%).

^aValues for age are mean ± SD or median (interquartile range). ^bElevated hsTnT indicates a level of >99th percentile upper reference limit; hsTnT, N-terminal pro-b-type natriuretic peptide.

ACS = acute coronary syndrome; BMI = body mass index; CAD = coronary artery disease; CMR = cardiovascular magnetic resonance; ECG = electrocardiogram; echo = echocardiogram; ECV = extracellular volume; hsTnT = high-sensitivity troponin I; hsTnT = high-sensitivity troponin T; LGE = late gadolinium enhancement; LV = left ventricle; LVEF = left ventricular ejection fraction; LVEDVi = left ventricular end-diastolic volume index; MI = myocardial infarction; NIV = noninvasive ventilation; PE = pulmonary embolus; RV = right ventricle; RVCI = right ventricular cardiac index; RVEDVi = right ventricular end-diastolic volume index; RVEF = right ventricular ejection fraction; RVSVi = right ventricular stroke volume index; TnT = troponin T.

TABLE 2 Continued

Comparator(s)	LGE	Myocardial Parametric Mapping	LV/RV Structure and Function, Pericardial Disease
None	<ul style="list-style-type: none"> 3 patients (19%) had nonischemic LGE and elevated T₂ (57-62 ms) 1 patient (6%) had ischemic LGE corresponding to previous known MI 	In 6 patients (all without LGE), 4 had elevated T ₁ only, 1 had elevated T ₂ only, and 1 had both elevated T ₁ and T ₂ .	Not reported
1. Healthy control individuals (n = 50): age- and sex-matched normotensive adults with normal cardiac volumes and function 2. Risk factor-matched control individuals (n = 57)	<ul style="list-style-type: none"> There was a greater proportion of case patients with LGE in (ischemic 32% vs 17%) and nonischemic (20% vs 7%) patterns compared to matched control individuals 	<ul style="list-style-type: none"> Case patients had significantly higher native T₁ (1,125 ms vs 1,111 ms) and higher T₂ (38.2 ms vs 35.4 ms) than matched control individuals Greater proportion of case patients with abnormal native T₁ (73% vs 58%) and abnormal T₂ (60% vs 26%) than matched control individuals 	<ul style="list-style-type: none"> Case patients had significantly lower LVEF (57% vs 62%), lower RVEF (54% vs 59%), and larger LVEDVi (86 mL/m² vs 76 mL/m²) than control individuals Pericardial effusion (20% vs 7%) was observed more frequently in case than control individuals
Healthy control individuals (n = 20): age- and sex-matched control subjects	<ul style="list-style-type: none"> 15 (58%) had "positive" CMR (elevated T₂ and/or LGE) 27% (n = 7) had both elevated T₂ and positive LGE finding 27% (n = 7) had elevated T₂ alone, and 1 patient had positive LGE alone 	<ul style="list-style-type: none"> Compared to healthy control individuals, "CMR positives" had significantly higher native T₁ (1,271 ms vs 1,224 ms), higher T₂ (42.7 ms vs 39.1 ms), and higher ECV (28.2% vs 23.7%) 	<ul style="list-style-type: none"> "CMR positives" had significantly lower RVEF (36.5% vs 46.1%), lower RVSVi (15.9 mL/m² vs 21.3 mL/m²), and lower RVCI (1.2 L/min/m² vs 1.5L/min/m²)
Risk factor-matched control individuals (n = 30): matched on age, sex, BMI, smoking, hypertension, diabetes, CAD, and stroke	<ul style="list-style-type: none"> The proportion of case patients with LGE was not statistically different from control individuals in myocardial (11.5% vs 7.4%) or ischemic (1.9% vs 0%) patterns 	<ul style="list-style-type: none"> Basal and mid-myocardial T₁ values were elevated in 13 (22%) and 4 (7%) patients, respectively Case patients had higher native T₁ values in the basal (1,179 ms vs 1,149 ms) and midlevel (1,173 ms vs 1,150 ms) short-axis slices than control individuals 	Not reported
Healthy control individuals (n = 25): age- and sex-matched control subjects without history of cardiovascular disease and with normal ECG, echo, and CMR findings	<ul style="list-style-type: none"> 1 patient (3%) had LGE located at the middle inferior wall 	<ul style="list-style-type: none"> Global ECV was significantly higher in case compared to control individuals (30% vs 25%) Global native T₁ was not significantly different between case and control individuals (1,137 ms vs 1,138 ms, respectively) 	<ul style="list-style-type: none"> 2D global longitudinal strain was significantly poorer in case compared to control individuals (-12.5% vs -15.4%) There were no differences in LV or RV size or function between case patients and healthy control individuals
Healthy control individuals (n = 31): age and sex matched; known to have normal ECG, echo, and CMR findings	<ul style="list-style-type: none"> LGE was identified in 13 (30%) of patients, compared to none of the control individuals All LGE lesions were in the mid-myocardium and/or subepicardium with a scattered distribution 	<ul style="list-style-type: none"> Native T₁ not significantly different in LGE-positive vs -negative case patients (1,286 ms vs 1,253 ms) Not available in control individuals for comparison 	<ul style="list-style-type: none"> LGE-positive patients had significantly decreased LV and RV peak global circumferential strain and poorer RV peak global longitudinal strain compared to non-LGE patients (P < 0.05), whereas no difference was found between the non-LGE patients and healthy control individuals
None	<ul style="list-style-type: none"> 45% (n = 13) of patients had "myocarditis-like" LGE 7% (n = 2) of patients had midwall LGE only 7% (n = 2) of patients had ischemic LGE For 31% (n = 9) of patients, elevated hsTnT was attributed to an ischemic cause. Of these, 7 had inducible ischemia, 1 had prior myocardial infarction, and 1 had both inducible ischemia and a prior infarction by CMR. 	<ul style="list-style-type: none"> In patients with "myocarditis-like LGE," there was no significant difference in peak myocardial T₂ compared to the rest of the cohort 	<ul style="list-style-type: none"> Mean biventricular systolic function for the overall cohort was normal (LVEF: 67.7%; RVEF: 63.7%) One patient (3%) had mild LV dysfunction, and one (3%) had severe biventricular dysfunction 7% (n = 2) had pericardial effusions
1. Risk factor-matched control individuals (n = 40): matched for age, sex, diabetes, and hypertension 2. Healthy volunteers (n = 40) with no cardiac symptoms, history of cardiovascular disease, or hypertension	<ul style="list-style-type: none"> No differences in the proportion of case/control individuals with any LGE (49% vs 45%), subendocardial/transmural LGE (16% vs 15%), or mid-myocardial LGE (11% vs 15%) Percentage of patients with subepicardial LGE was greater than control individuals (22% vs 5%) 	<ul style="list-style-type: none"> There was no significant difference in the proportion of patients with abnormal septal T₁ (13% vs 13%), remote native T₁ (1,033 ms vs 1,028 ms), abnormal septal T₂ (3% vs 3%), or remote T₂ (46 ms vs 47 ms) compared to matched control individual 	<ul style="list-style-type: none"> Case patients had significantly larger RVEDVi (70 mL/m² vs 65 mL/m²), larger RVESVi (28 mL/m² vs 23 mL/m²), and lower RVEF (61% vs 64%) There was no statistical difference in LV volume and function metrics
Matched control individuals (n = 75): seronegative health care workers matched on age, sex, and ethnicity	<ul style="list-style-type: none"> No difference in LGE percentage between case and control individuals (0.27% vs 0.32%) No difference between case and control individuals in the proportion of individuals with RV insertion point LGE (11% vs 8%) or non-RV insertion point LGE (8% vs 9%) 	<ul style="list-style-type: none"> Among case and control individuals, there was no difference in septal T₁ (1,020 ms vs 1,016 ms), global T₁ (1,010 ms vs 1,007 ms), septal T₂ (48.8 ms vs 48.6 ms), global T₂ (48.7 ms vs 48.4 ms), septal ECV (22.3% vs 22.1%), or global ECV (21.6% vs 21.5%) 	<ul style="list-style-type: none"> There were no significant differences in LV structure or function metrics between case and control individuals

(29). Lindner et al (30) demonstrated the presence of SARS-CoV-2 viral particles in the heart in 24 of 39 (59%) consecutive autopsies. Of note, viral particles were not present in myocytes but, rather, within the interstitial space. In addition to the aforementioned inflammatory processes, Bois et al (31) reported microthrombi in association with COVID-19. In another series of 40 hearts from patients who died of COVID-19, myocardial necrosis (primarily of the LV) was present in 14 (35%); the majority of these had small (11/14) or large (2/14) vessel thrombosis (32).

In summary, myocardial injury in hospitalized patients with COVID-19 is frequent and portends a worse prognosis. Based on limited autopsy information, the pathogenesis of SARS-CoV-2 infection was infrequently lymphocytic myocarditis; instead, macrophage infiltration, inflammation, and microthrombi were more common at autopsy. Early evidence indicates that myocardial abnormalities are present in only a proportion of convalescent patients, and current data are limited. In the following section, we review information to date showing the use of CMR as a highly sensitive method to detect myocardial abnormalities in association with COVID-19.

CMR OF ACUTE AND CONVALESCENT PATIENTS WITH COVID-19

ASSESSMENT OF MYOCARDIAL INJURY USING CMR. CMR identifies myocardial injury associated with both nonischemic and ischemic disease. CMR assesses both myocardial function and tissue characterization, including myocardial edema that is present in inflammatory disease. For acute myocarditis-like presentations, CMR may support or exclude active myocardial inflammation by use of the so-called Lake Louise criteria (33). The Lake Louise criteria comprise at least 1 T_2 -based criterion with at least 1 T_1 -based criterion (see Table 1 for definitions of CMR terminology). Supportive criteria include pericardial effusion and systolic LV dysfunction.

The Lake Louise criteria have been validated in the context of clinically suspected acute myocarditis; they have not been validated in patients recovering from acute COVID-19 or presenting with prolonged symptoms. Nevertheless, CMR allows the assessment of a wide range of functional and tissue characterization parameters (Table 1). Especially in patients with chronic inflammatory conditions, T_2 mapping (reflecting myocardial edema) is reported to inform the CMR diagnosis (34). However, the optimal combination of CMR criteria to characterize myocardial disease in patients recovering from COVID-19 remains to be determined. Suggested Society for Cardiovascular

Magnetic Resonance imaging protocols for patients with active or convalescent-phase COVID-19 infection have been reviewed by Kelle et al (35).

CMR FOR PATIENTS WITH ACUTE COVID-19.

The use of CMR in the acute setting has been infrequently reported, in part because of concerns of infection control in the hospital environment. Case reports have shown abnormal myocardial T_2 and native T_1 times, pericardial abnormalities (myopericarditis), and a nonischemic pattern of late gadolinium enhancement (LGE) (9,36). In patients with a high pretest probability for acute myocardial injury and myocarditis-like injury, CMR may improve diagnostic specificity, guide management decisions, and affect the prognosis (33). CMR can provide a noninvasive, biopsy-like method for identifying the imaging features of myocardial inflammation.

CMR FOR CONVALESCENT PATIENTS WITH COVID-19.

Several early reports raised concern for myocardial injury in association with COVID-19. In an early study, Ng et al (37) reported results from 16 patients who had been hospitalized with COVID-19 and who had elevated cTn or abnormal electrocardiograms (ECGs) during the acute illness (Table 2). At 2 months after the initial COVID-19 diagnosis, CMR was abnormal in 9 of 16 (56%) patients. Three patients (19%) had CMR criteria for myocarditis-like injury. That study was buttressed by a report from Germany: Puntmann et al (38) performed a prospective study of 100 recovered patients, the majority (49%) of whom had mild to moderate COVID-19 and two-thirds of whom were not hospitalized. At 2 to 3 months after a positive test result, 78 of 100 patients with prior COVID-19 had an abnormal CMR finding. The mean LV and RV ejection fractions were lower, and median native T_1 and T_2 were higher (indicative of edema and/or collagen deposition), than in control individuals. Pericardial enhancement was frequent (22%). There were greater proportions of patients with ischemic (32% vs 17%) and nonischemic (20% vs 7%) LGE patterns than the risk factor-matched control group. The prevalence of CMR abnormalities was more frequent than identified by cardiac blood biomarkers (38). However, individuals not hospitalized for COVID-19 had fewer CMR abnormalities compared to the hospitalized patients. This result was confirmed by Joy et al (39), who evaluated 74 health care workers with mild or asymptomatic COVID-19; CMR abnormalities at 6 months post-SARS-CoV-2 infection were similar to those of control subjects.

CMR of patients hospitalized for COVID-19. Rates of CMR-identified abnormalities in patients hospitalized

because of COVID-19 have shown wide variation. Li et al (40) used CMR to evaluate 40 patients who had been hospitalized with moderate to severe COVID-19. The investigators excluded patients with known cardiovascular disease or diabetes. At approximately 5 months after hospital discharge, 24 of 40 (60%) patients had elevated extracellular volume (ECV) compared to control individuals, and 28 of 40 had subclinical LV dysfunction (by global longitudinal strain). However, only 1 of the 40 patients had LGE. In 44 hospitalized patients with COVID-19 free from pre-existing baseline cardiovascular disease, Wang et al (41) found nonischemic LGE in 13 of 44 (30%) patients after 3 months. Patients with LGE had worse LV and RV function by strain analysis compared to control individuals.

Knight et al (42) described CMR findings in 29 patients who had been hospitalized with COVID-19 and who had unexplained cTn elevation during the acute illness. At a mean of approximately 1 month after hospital admission, 32% of patients had occult ischemic heart disease (by LGE or stress perfusion), and 45% had a “myocarditis-like” pattern of LGE. In an expanded report from the same group, Kotecha et al (43) reported convalescent CMR findings from 148 patients hospitalized with severe COVID-19. At 2 months after hospital discharge, the investigators reported a myocarditis-like pattern of LGE in 26% (39/148) and myocardial infarction or inducible ischemia in 22% (32/148).

Huang et al (44) published a retrospective study of 26 patients hospitalized with moderate to severe COVID-19, who underwent CMR postrecovery (at approximately 1.5 months) for investigation of cardiac symptoms (chest pain: 12%; palpitation: 88%; chest distress: 23%). Fifteen patients (58%) had abnormal CMR findings (defined as increased myocardial T₂ time and/or the presence of LGE); these patients had lower RV function than control individuals (eg, lower ejection fraction and stroke volume). Their results suggested a link between LV myocardial inflammation and lower RV function, a proxy indicator of COVID-19 severity. Knight et al (42) also noted a link between sustained pulmonary and cardiac involvement, with high rates of persistent lung parenchymal changes (69%) and pleural effusion (14%) on postrecovery CMR. These observations give rise to the concept that cardiac involvement associated with COVID-19 may not be a specific effect on the heart but, rather, a consequence of pulmonary and systemic inflammatory processes. The concept of systemic inflammatory activity in multiple organs (rather than cardiac-specific injury) is also supported by the findings of

Raman et al (45), indicating multiorgan involvement after recovery.

In summary, reports of CMR-identified abnormalities in patients hospitalized caused by COVID-19 range from 26% to 60% of individuals at 1 to 5 months after hospital discharge. Reassuringly, patients with mild COVID-19 and asymptomatic individuals are reported to have low rates of CMR abnormalities (38,39). Comparison of early CMR studies is hampered by variable times of patient follow-up, associated comorbidities, prevalence of cardiovascular risk factors, and potential in-hospital treatment. CMR methods have also varied among published reports. Future studies with standardized CMR protocols are needed to evaluate the longer-term (1 year or more) effect of COVID-19 disease on the heart. Because of the high sensitivity of CMR for myocardial scar (particularly in patients with cardiovascular risk factors and pre-existing cardiovascular disease), these longer-term follow-up studies should include carefully matched risk factor control groups (46).

EVALUATION OF ATHLETES AFTER COVID-19

As a result of the close congregation and contact of players during practice and competition, there is an increased risk of COVID-19 infections among athletes. Exercise initiated too early after viral infection or in occult myocarditis may have serious consequences (47,48). Indeed, non-COVID-19 myocarditis accounts for 4% to 8% of sudden cardiac deaths in athletes (49,50) or may lead to long-term complications such as myocardial scarring, arrhythmias, and myocardial dysfunction.

CMR OF ATHLETES RECOVERING FROM COVID-19.

Table 3 summarizes publications to date that have used CMR to evaluate athletes recovering from COVID-19. In the first publication on CMR in athletes, Rajpal et al (51) studied 26 college athletes who underwent CMR 11 to 53 days after having tested positive for COVID-19 (Table 3). The investigators found that 46% had mild to moderate symptoms of COVID-19 infection and that 54% were asymptomatic. Twelve athletes (46%) had myocardial LGE, with 4 (15%) having myocarditis-like findings on CMR (52).

Subsequent publications have reported lower rates of CMR abnormalities (Table 3). Brito et al (53) described CMR findings in 48 college athletes at a median of 27 days (range 22-33 days) after a positive COVID-19 test. None had CMR-defined myocarditis, although approximately 1 in 3 athletes had pericardial abnormalities. Similarly, Małek et al (54) and Vago et al (55) reported on 26 and 12 athletes, respectively; none had CMR-defined myocarditis. Clark et al (56)

TABLE 3 CMR of Athletes Recovered From COVID-19

First Author (Ref. #)	Patient Cohort (Cases)			LGE Positive
	n	Men, %	Age, y	
Rajpal et al (52)	26 • 54% asymptomatic, 46% mild to moderate symptoms • CMR 11-53 d after positive test result	58	19 ± 1.5	12/26 (46)
Brito et al (54)	54 (48 ^c) • 30% asymptomatic, 66% mild symptoms, 4% moderate symptoms • CMR 27 (range 22-33) days after positive test result	85	19 (19-21)	1/48 (2)
Matek et al (55)	26 • 23% asymptomatic, 54% mild, 19% moderate symptoms • CMR 32 (22-62) days after positive test result	19	24 (21-27)	1/24 (4)
Vago et al (56)	12 • 17% asymptomatic, 83% mild-moderate symptoms • CMR 17 (17-19) days after positive test result in women; 67 d and 90 d in men	17	23 (20-23)	0/12 (0)
Clark et al (57)	59 • 22% asymptomatic, 78% mild to moderate symptoms • CMR 22 (13-37) days after positive test result	37	20 (19-21)	16/59 (27)
Starekova et al (58)	145 • 12% asymptomatic, 49% mild symptoms, 28% moderate symptoms • CMR median of 15 (range 11-194) days after positive test result	75	19.6 ± 1.3	42/145 (29)
Martinez et al (59)	789 (27 ^c) • 42% asymptomatic or minimally symptomatic, 58% moderate to severe symptoms • CMR mean of 19 ± 17 (range 3-156) days after positive test result	99	25 ± 3	2/27 (7)
Hendrickson et al (60)	137 (5 ^c) • 67% mild symptoms, 33% moderate symptoms • CMR range 15-44 d	68	20 (18-27)	0/5 (0)
Moulson et al (61)	3,018 (198 ^a) Multicenter (n = 42) study	68	20 ± 1	not applicable
Daniels et al (53)	2,461 (1,597 ^a) Multicenter (n = 13) study	67	not reported	not applicable

Values are n, %, mean ± SD, or n/N (%). All were retrospective studies except for Rajpal et al (52) and Vago et al (56), which were prospective studies. ^aMyocarditis diagnosis based on CMR findings as per updated Lake Louise criteria (58). ^bSegment location given according to 17-segment American Heart Association model of the LV. ^cNumber who underwent CMR. ^dCMR criteria for myocarditis not specified. ^eNumber who underwent primary screening CMR.

GLS = global longitudinal strain; not applicable = not applicable or not given; TTE = transthoracic echocardiography; other abbreviations as in Table 2.

described 59 college athletes recovering from COVID-19 with CMR at a median of 22 days (range 10-162 days) following diagnosis. Two athletes (3%) had myocarditis-like findings on CMR.

Starekova et al (57) studied a consecutive cohort of college athletes (N = 145) who underwent standardized screening including CMR. Two patients (1.4%) had myocarditis-like CMR findings. Finally, Martinez et al (58) reported the evaluation of 789 professional

U.S. athletes after COVID-19 recovery. Twenty-seven patients underwent CMR, and 3 (11%) of them had myocarditis-like findings. However only a small fraction of the professional athletes underwent CMR. Hendrickson et al (59) evaluated 137 collegiate athletes, with 5 patients referred for CMR because of abnormal testing results (eg, elevated cTn, coronary artery ectasia [59]). No abnormal findings were detected by CMR, and no athlete had an abnormal ECG.

TABLE 3 Continued

Abnormal T ₁ + T ₂ , Myocarditis-like Findings on CMR ^a	LGE Pattern/ Location in Patients With Myocarditis ^{a,b}	Troponin in Patients With Myocarditis ^a	ECG and TTE in Patients With Myocarditis ^a	Pericardium Pathology
4/26 (15%) <ul style="list-style-type: none"> • 2 asymptomatic • 2 symptomatic 	<ul style="list-style-type: none"> • Epicardial, segments 3 and 9 • Patchy, segments 3 and 9 • Patchy, segments 2, 3, 8, and 9 • Linear, segments 8 and 9 	No	No	Effusion: 2/26 (8%) in athletes with myocarditis ^a
0%	not applicable	not applicable	not applicable	Pericardial LGE: 19/48 (40%) Effusion: 28/48 (58%)
0%	not applicable	not applicable	not applicable	Effusion: 2/26 (8%)
0%	not applicable	not applicable	not applicable	No
2/59 (3%) <ul style="list-style-type: none"> • 1 asymptomatic • 1 symptomatic 	<ul style="list-style-type: none"> • Segment 3 • Segments 3 and 11 	No	1 of 2 patients developed LV dysfunction (LVEF 45%) on a follow-up TTE	Pericardial LGE: 1/59 (2%)
2 (1.4%) <ul style="list-style-type: none"> • 1 asymptomatic • 1 symptomatic 	<ul style="list-style-type: none"> • Segments 11, 12, 13, 15, and 16 • Segments 4 and 10 	1 of 2	1 of 2 patients new nonspecific ST-segment and T-wave ECG abnormalities and mild reduction in GLS in TTE	Pericardial LGE: 1 (in patient with
3/27 (11%) ^d 0.4% of the total cohort; 3 symptomatic	not applicable	1 of 3	1 of 3 patients ECG abnormalities 1 of 3 patients regional wall motion, mildly reduced LVEF (50%), dilated RV by TTE	Pericardial LGE: 2/27 (7.4%)
0%	not applicable	not applicable	not applicable	Small effusion in TTE: 4/137 (2.9%)
Definite, probable, or possible cardiac involvement overall: n = 21/3,018 (0.7%) <ul style="list-style-type: none"> • 15/2,820 (0.5%) who underwent clinically indicated CMR (n = 119) • 6/198 (3%) who underwent primary screening CMR 	not applicable	not applicable	not applicable	not applicable
Myocarditis: n = 37/1,597; range 0%-7% (overall: 2.3%; 95% CI: 1.6-3.2) <ul style="list-style-type: none"> • 31/37 myocarditis-like findings on CMR^a 	not applicable	not applicable	not applicable	not applicable

In the Outcomes Registry for Cardiac Conditions in Athletes (ORCCA) prospective registry, collegiate athletes with at least 1 positive component of a triad of initial testing (ECG, cTn, or transthoracic echocardiography) were more than 4 times more likely to have a positive CMR finding compared to primary screening CMR (15/119 [12.6%] vs 6/198 [3%], respectively) (60). Another large multicenter study conducted by Daniels et al (52) included 13 universities and 2,461 athletes, of whom 1,597 had CMR. In 37 of 1,597 (2.3%) athletes, myocarditis was diagnosed clinically. Of these 37 athletes, 31 had

CMR findings meeting the Lake Louise criteria for myocarditis. The prevalence of abnormal CMR findings varied from 0% to 7.6% among the included institutions (52).

In summary, the prevalence of myocarditis-like findings on CMR for athletes after COVID-19 is highly variable across the studies (range 0%-15%) (Table 3). Larger multicenter studies have tended toward lower prevalence rates. Approximately 50% of athletes who had myocarditis-like findings on CMR in single-center studies were asymptomatic, and all but 2 had normal troponin and ECG. A potential false-

positive CMR finding was LGE at the RV insertion point (0%-26% prevalence) that has been previously reported in association with athletic activity (61) and is unlikely to be related to COVID-19. An important limitation of these reports is either lack or insufficient matching of a control group (eg, by age, sex, or type of sport [endurance or strength]) (Supplemental Table 1).

MULTISYSTEM INFLAMMATORY SYNDROME IN CHILDREN

Multisystem inflammatory syndrome in children (MIS-C), also called pediatric inflammatory multi-system syndrome, is characterized by a severe inflammatory response after SARS-CoV-2 infection. Multiple definitions of the syndrome have been published (62-64). The U.S. Centers for Disease Control and Prevention defines MIS-C as individuals younger than 21 years of age who have a fever for at least 24 hours, laboratory evidence of inflammation, multisystem involvement, severe illness requiring hospitalization, no alternative plausible diagnosis, and recent or current SARS-CoV-2 infection or exposure (63). MIS-C is believed to be a delayed immune response occurring after SARS-CoV-2 infection, typically occurring 2 to 6 weeks after infection (65-67). The immunologic profile for acute COVID-19 appears to be distinct from MIS-C (68).

Patients presenting with MIS-C are frequently otherwise healthy and may present with symptoms similar to Kawasaki disease (eg, rash, conjunctival injection) or myocarditis, sometimes in shock, in addition to frequent gastrointestinal symptoms (65). Older pediatric patients (13-20 years of age) more often present with myocarditis-like symptoms (73%) as opposed to younger patients (0-5 years of age [39%]), but younger patients more often present with symptoms similar to Kawasaki disease (48% vs 11% in older pediatric patients) (69). Patients have markedly abnormal laboratory testing results, including elevated inflammatory markers, thrombocytopenia, elevated B-type natriuretic peptide and/or cTn, and abnormal coagulation markers (67). Potential mechanisms contributing to the pathophysiology of MIS-C include a hyperactive postviral immunologic response to COVID-19 leading to systemic inflammation. However, this is the subject of ongoing investigation (70).

Cardiac involvement in children with MIS-C is common, including most frequently diminished LV systolic function in addition to arrhythmias, pericardial effusion, and coronary artery dilation and/or aneurysms (65). In a case series of 570 children, the

median length of stay was 6 days, with 64% requiring intensive care, and although most children ultimately recover, the mortality rate was reported as 1% to 2% (65). Feldstein et al (71) described reduced LV ejection fraction in 172 of 503 (34%) of patients with MIS-C; all but 1 patient recovered function at 90 days (71). In the same study, coronary artery aneurysms were present in 57 of 424 (13%) patients, with normalization in all evaluated patients at 90 days.

There have been several small studies to date evaluating CMR findings in patients with MIS-C, encompassing more than 130 patients. CMRs that were performed during the initial hospitalization or soon after discharge frequently identified myocardial edema on T₂-weighted images, hyperemia and capillary leak (using T₁-weighted images before and immediately after gadolinium administration), and LGE (72-77). However, in a few studies evaluating CMRs closer to 2 to 3 months after discharge, there were frequently no abnormalities (78,79).

CMR FOR PATIENTS WITH COVID-19: PLANNED AND ONGOING STUDIES

The use of CMR in the context of COVID-19 is driven by the accuracy and reproducibility of the method and its unique role in myocardial tissue characterization (Central Illustration). Supplemental Table 2 is a list of planned and ongoing studies using CMR to investigate the cardiovascular manifestations of COVID-19, identified primarily from clinical trial registration sites. Overall, almost 10,000 participants will be included across all studies, which are planned in a range of settings and in diverse patient populations. Global sharing of CMR databases may further augment the power of these proposed investigations. Indeed, recent national and international initiatives have been established to create research databases of CMR studies of patients with COVID-19 (80,81).

RECOMMENDATIONS FOR THE USE OF CMR IN PATIENTS WITH COVID-19

The appropriate use of CMR and its role in the treatment of patients with COVID-19 must be considered within the multifactorial context of disease severity, availability of CMR versus other cardiovascular imaging resources, and pretest probability. Evidence-based knowledge regarding the appropriate use of CMR for patients with COVID-19 is expected to evolve over several years because the long-term complications of the disease are currently under intense study (Supplemental Table 2). To address the current gap in

TABLE 4 CMR For Patients With COVID-19: CMR Should Be Considered Only When Results are Likely to Have an Impact on Clinical Decision Making

Clinical Scenario	Consider CMR for the Following Patients
1. Patients with acute COVID-19	High pretest probability for acute myocardial injury due to inflammation
2. Convalescent patients after recovery from COVID-19	1. Unexplained, persisting, or recurring cardiovascular symptoms as a part of a systemic inflammatory post-COVID-19 syndrome (4 wk after recovery) 2. For follow-up, when CMR in the acute setting showed clinically significant acute myocardial injury (4 wk after baseline/acute CMR)
3. Recovering high-performance athletes: return to play	1. Before returning to training for patients with a. History of moderate COVID-19 and high pretest probability of myocardial injury b. History of severe COVID-19 2. Return to play with new-onset cardiovascular symptoms and suspicion of myocardial injury
4. Patients with suspected MIS-C	1. Clinical suspicion of myocardial injury or with diminished ventricular function during inpatient hospitalization for acute illness 2. Approximately 1 to 6 months after the acute MIS-C presentation in patients with prior moderately or severely diminished LV systolic function or baseline abnormal CMR findings 3. Concern for coronary artery aneurysm

CMR = cardiac magnetic resonance; MIS-C = multisystem inflammatory syndrome in children.

knowledge, a diverse group of investigators from 9 countries (principally cardiologists and radiologists with extensive experience in CMR) were assembled to offer expert opinion regarding appropriate CMR use. The opinions that follow have been informed by each researcher’s experience with COVID-19 patients and after extensive review of published reports and group discussion. Definitions of COVID-19 severity were based on established disease classifications relevant to each practitioner (82,83); 80% or higher agreement on the direction of recommendation was considered concurrence. In all discussions, the expert panel recommended consideration of CMR testing only when the test would likely affect clinical decision making, such as altering therapeutic decisions. The consensus recommendations regarding 4 distinct patient scenarios are detailed below and summarized in Table 4.

1. CMR FOR PATIENTS WITH ACUTE COVID-19. CMR should be considered for COVID-19 patients with high pretest probability for acute myocardial injury due to inflammation and when CMR findings are likely to have an impact on clinical decision making. In suspected acute myocardial injury, acute coronary syndrome (eg, myocardial infarction types 1 and 2 [18]) should be excluded before CMR to avoid diagnostic delay and treatment.

2. CMR FOR CONVALESCENT PATIENTS AFTER RECOVERY FROM COVID-19. CMR should be considered for patients with COVID-19 after recovery from COVID-19 in the following circumstances and when CMR findings are likely to have an impact on clinical decision making:

1. Patients with otherwise unexplained, persisting, or recurring cardiovascular symptoms (eg, exertional dyspnea, palpitations, chest pain, fatigue, or other

symptoms of myocardial injury or heart failure) as a part of a systemic inflammatory post-COVID-19 syndrome more than 4 weeks after COVID-19 recovery.

2. Patients who had CMR in the acute setting who showed clinically significant acute myocardial injury. The convalescent CMR should be performed 4 weeks or more after the baseline (acute) CMR.

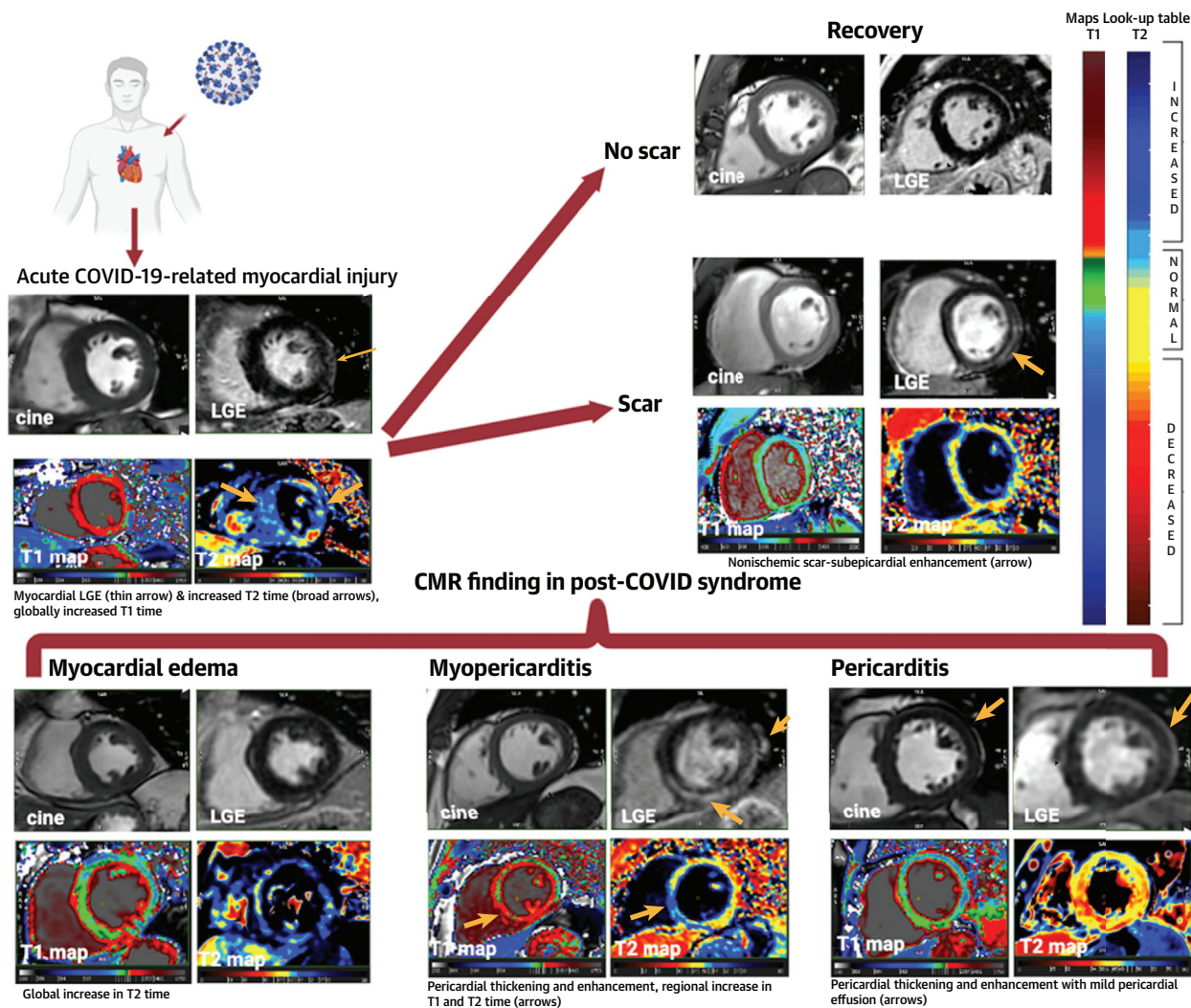
3. CMR FOR RECOVERING HIGH-PERFORMANCE ATHLETES.

1. Return-to-play CMR should be considered for high-performance athletes after COVID-19 recovery and before return to training in the following settings:
 - a. History of moderate COVID-19 and high-pretest probability of myocardial injury by diagnostic testing or clinical suspicion
 - b. History of severe COVID-19
2. CMR should be considered for high-performance athletes who have returned to play with new-onset cardiovascular symptoms with suspicion of myocardial injury.

See Kim et al (84) for more detail.

4. CMR FOR PATIENTS WITH SUSPECTED MIS-C. CMR should be considered for patients with MIS-C in the following settings:

- Clinical suspicion of myocardial injury or with significantly diminished ventricular function during inpatient hospitalization for acute illness, particularly if not clinically improving
- Approximately 1 to 6 months after the acute MIS-C presentation in patients with prior moderately or severely diminished LV systolic function or baseline abnormal CMR findings
- Concern for coronary artery aneurysm

CENTRAL ILLUSTRATION The Role of Cardiac Magnetic Resonance in the Characterization of COVID-19

Petersen SE, et al. *J Am Coll Cardiol Img.* 2022;15(4):685-699.

In the acute setting (**top left**), cardiac magnetic resonance can provide a noninvasive, biopsy-like method to identify the imaging features of myocardial injury, including abnormal late gadolinium enhancement, T₁ and T₂ abnormalities, and pericardial abnormalities. Some patients will have persistent myocardial scar (**top right**) on late gadolinium enhancement images with persistent T₁ and T₂ mapping abnormalities. Patterns of residual myocardial abnormalities in post-COVID-19 syndrome include (**bottom row**) myocardial edema, myopericarditis, and isolated pericarditis.

Because of the evolving clinical information, these recommendations may be revised as additional information becomes available. CMR recommendations also need to be modified based on a patient's individual cardiovascular risk factors, change in clinical status, or unexplained symptoms. CMR practitioners should be aware of cardiac magnetic resonance parameters ([Supplemental Table 3](#)), special considerations, and clinical guidelines for certain patient populations, such as

high-performance athletes (eg, Kim et al [84]) ([Supplemental Table 1](#)) and pediatric patients, including those with MIS-C (85).

CONCLUSIONS

Public health guidelines and vaccine development are expected to result in fewer incident cases of COVID-19. However, the clinical spectrum of recovery after acute COVID-19 with regard to cardiovascular

HIGHLIGHTS

- Given the high rate of acute cardiovascular abnormalities in COVID-19 reported in clinical and pathologic series, concern exists for long-term myocardial injury in convalescent patients.
- We review existing studies of CMR in COVID-19 and discuss the use of CMR for the acute and convalescent patients, including athletes.
- Existing evidence is limited by small cohort sizes; absence of longitudinal follow-up; and, in some cases, lack of appropriate controls.
- Evaluation of emerging evidence from ongoing and planned international studies will be essential for more robust evidence-based clinical decision making.

disease is unresolved. Reports to date have raised the potential of sustained cardiac injury in patients who have recovered from COVID-19. CMR is a key noninvasive clinical and research tool because of its comprehensive evaluation of myocardial function, structure, and tissue composition. Given the high sensitivity of CMR, important caveats to the application of CMR include: 1) the detection of subclinical cardiac disease that may have occurred before SARS-CoV-2 infection; and 2) the detection of CMR

abnormalities that may not functionally affect quality of life or increase the risk of future cardiovascular events. Longer-term studies are necessary to determine the clinical importance of CMR metrics and their association with incident health outcomes. Comparison to control groups (matched for cardiovascular risk factors and severity-matched non-COVID illness when feasible) will ultimately help determine the relationship of CMR findings to long-term patient outcomes.

FUNDING SUPPORT AND AUTHOR DISCLOSURES

Dr Petersen provides consultancy to and is a shareholder of Circle Cardiovascular Imaging, Inc, Calgary, Alberta, Canada. Dr Friedrich is board member, shareholder, and consultant of Circle Cardiovascular Imaging Inc. Dr Kramer is a consultant to Bristol Myers Squibb. Dr Nagel has received research support from Bayer AG, Neosoft, and Medis. Dr Pennell has received research support from Siemens. Dr Bluemke is a consultant to Bayer AG. All other authors have reported that they have no relationships relevant to the contents of this paper to disclose. Dr Petersen has received support from the National Institute for Health Research Biomedical Research Centre at Barts. Dr Ferreira receives support from the British Heart Foundation, British Heart Foundation Centre of Research Excellence, Oxford, and the National Institute for Health Research Oxford Biomedical Research Centre at Oxford University Hospitals NHS Foundation Trust. Dr Raisi-Estabragh was supported by British Heart Foundation Clinical Research Training Fellowship number FS/17/81/33318.

ADDRESS FOR CORRESPONDENCE: Dr David A. Bluemke, University of Wisconsin School of Medicine and Public Health, 600 Highland Drive, Madison, Wisconsin 53792, USA. E-mail: d Bluemke@wisc.edu. Twitter: [@RadiologyEditor](https://twitter.com/RadiologyEditor).

REFERENCES

1. World Health Organization. Coronavirus disease Q28 (COVID-19) dashboard. Accessed July 8, 2021. <https://covid19.who.int/>
2. Walls AC, Park YJ, Tortorici MA, Wall A, McGuire AT, Veesler D. Structure, function, and antigenicity of the SARS-CoV-2 spike glycoprotein. *Cell*. 2020;181(2):281-292.e6. <https://doi.org/10.1016/j.cell.2020.02.058>
3. Shi S, Qin M, Shen B, et al. Association of cardiac injury with mortality in hospitalized patients with COVID-19 in Wuhan, China. *JAMA Cardiol*. 2020;5(7):802-810. <https://doi.org/10.1001/jamacardio.2020.0950>
4. Rudski L, Januzzi JL, Rigolin VH, et al. Multimodality imaging in evaluation of cardiovascular complications in patients with COVID-19: JACC scientific expert panel. *J Am Coll Cardiol*. 2020;1345-1357. <https://doi.org/10.1016/j.jacc.2020.06.080>
5. Phelan D, Kim JH, Elliott MD, et al. Screening of potential cardiac involvement in competitive athletes recovering from COVID-19: an expert consensus statement. *J Am Coll Cardiol Img*. 2020; 2635-2652. <https://doi.org/10.1016/j.jcmg.2020.10.005>
6. ESC Guidance for the Diagnosis and Management of CV Disease during the COVID-19 Pandemic. Accessed April 27, 2021. <https://www.escardio.org/Education/COVID-19-and-Cardiology/ESC-COVID-19-Guidance>
7. Society for Cardiovascular Magnetic Resonance. Statement from SCMR on the role of CMR in patients with history of COVID-19 infection. Accessed April 23, 2021. <https://scmr.org/news/526857/Statement-from-SCMR-on-the-Role-of-CMR-in-Patients-with-History-of-COVID-19-Infection.htm>
8. Bangalore S, Sharma A, Slotwiner A, et al. ST-segment elevation in patients with Covid-19—A case series. *N Engl J Med*. 2020;382(25):2478-2480. <https://doi.org/10.1056/nejmc2009020>
9. Inciardi RM, Lupi L, Zaccone G, et al. Cardiac involvement in a patient with coronavirus disease 2019 (COVID-19). *JAMA Cardiol*. 2020;5(7):819-824. <https://doi.org/10.1001/jamacardio.2020.1096>
10. Doyen D, Mocerri P, Ducreux D, Dellamonica J. Myocarditis in a patient with COVID-19: a cause of raised troponin and ECG changes. *Lancet*. 2020;395(10235):1516. [https://doi.org/10.1016/S0140-6736\(20\)30912-0](https://doi.org/10.1016/S0140-6736(20)30912-0)
11. Deng Q, Hu B, Zhang Y, et al. Suspected myocardial injury in patients with COVID-19: evidence from front-line clinical observation in Wuhan, China. *Int J Cardiol*. 2020;311:116-121. <https://doi.org/10.1016/j.ijcard.2020.03.087>
12. Van Osch D, Asselbergs FW, Teske AJ, et al. Takotsubo cardiomyopathy in COVID-19: a case report. Haemodynamic and therapeutic considerations. *Eur Hear J Case Rep*. 2020;4(F1):1-6. <https://doi.org/10.1093/ehjcr/yt2a271>
13. Chitsazan M, Amin A, Chitsazan M, et al. Heart failure with preserved ejection fraction in coronavirus disease 2019 patients: the promising role of diuretic therapy in critically ill patients. *ESC Heart Fail*. 2021;8(2):1610-1614. <https://doi.org/10.1002/ehf2.13175>
14. Jirak P, Larbig R, Shomanova Z, et al. Myocardial injury in severe COVID-19 is similar to pneumonias of other origin: results from a multicentre study. *ESC Heart Fail*. 2021;8(1): 37-46. <https://doi.org/10.1002/ehf2.13136>

15. Shi S, Qin M, Cai Y, et al. Characteristics and clinical significance of myocardial injury in patients with severe coronavirus disease 2019. *Eur Heart J*. 2020;41(22):2070-2079. <https://doi.org/10.1093/eurheartj/ehaa408>
16. Huang C, Wang Y, Li X, et al. Clinical features of patients infected with 2019 novel coronavirus in Wuhan, China. *Lancet*. 2020;395(10223):497-506. [https://doi.org/10.1016/S0140-6736\(20\)30183-5](https://doi.org/10.1016/S0140-6736(20)30183-5)
17. Giustino G, Croft LB, Stefanini GG, et al. Characterization of myocardial injury in patients with COVID-19. *J Am Coll Cardiol*. 2020;76(18):2043-2055. <https://doi.org/10.1016/j.jacc.2020.08.069>
18. Thygesen K, Alpert JS, Jaffe AS, et al. Fourth universal definition of myocardial infarction (2018). *Eur Heart J*. 2019;40(3):237-269. <https://doi.org/10.1093/eurheartj/ehy462>
19. Zhou F, Yu T, Du R, et al. Clinical course and risk factors for mortality of adult inpatients with COVID-19 in Wuhan, China: a retrospective cohort study. *Lancet*. 2020;395(10229):1054-1062. [https://doi.org/10.1016/S0140-6736\(20\)30566-3](https://doi.org/10.1016/S0140-6736(20)30566-3)
20. Guo T, Fan Y, Chen M, et al. Cardiovascular implications of fatal outcomes of patients with coronavirus disease 2019 (COVID-19). *JAMA Cardiol*. 2020;5(7):811-818. <https://doi.org/10.1001/jamacardio.2020.1017>
21. Lala A, Johnson KW, Januzzi JL, et al. Prevalence and impact of myocardial injury in patients hospitalized with COVID-19 infection. *J Am Coll Cardiol*. 2020;76(5):533-546. <https://doi.org/10.1016/j.jacc.2020.06.007>
22. Rath D, Petersen-Urbe Á, Avdiu A, et al. Impaired cardiac function is associated with mortality in patients with acute COVID-19 infection. *Clin Res Cardiol*. 2020;109(12):1491-1499. <https://doi.org/10.1007/s00392-020-01683-0>
23. Szekely Y, Lichter Y, Taieb P, et al. Spectrum of cardiac manifestations in COVID-19: a systematic echocardiographic study. *Circulation*. 2020;142(4):342-353. <https://doi.org/10.1161/CIRCULATIONAHA.120.047971>
24. Dweck MR, Bularga A, Hahn RT, et al. Global evaluation of echocardiography in patients with COVID-19. *Eur Heart J Cardiovasc Imaging*. 2020;21(9):949-958. <https://doi.org/10.1093/ehjci/jeaa178>
25. Huang C, Huang L, Wang Y, et al. 6-month consequences of COVID-19 in patients discharged from hospital: a cohort study. *Lancet*. 2021;397(10270):220-232. [https://doi.org/10.1016/S0140-6736\(20\)32656-8](https://doi.org/10.1016/S0140-6736(20)32656-8)
26. Sonnweber T, Sahanic S, Pizzini A, et al. Cardiopulmonary recovery after COVID-19—an observational prospective multi-center trial. *Eur Respir J*. 2020;57(4):2003481. <https://doi.org/10.1183/13993003.03481-2020>
27. Tucker NR, Chaffin M, Bedi KC, et al. Myocyte-specific upregulation of ACE2 in cardiovascular disease: implications for SARS-CoV-2-mediated myocarditis. *Circulation*. 2020;142(7):708-710. <https://doi.org/10.1161/CIRCULATIONAHA.120.047911>
28. Basso C, Leone O, Rizzo S, et al. Pathological features of COVID-19-associated myocardial injury: a multicentre cardiovascular pathology study. *Eur Heart J*. 2020;41(39):3827-3835. <https://doi.org/10.1093/eurheartj/ehaa664>
29. Halushka MK, Vander Heide RS. Myocarditis is rare in COVID-19 autopsies: cardiovascular findings across 277 postmortem examinations. *Cardiovasc Pathol*. 2021;50:107300. <https://doi.org/10.1016/j.carpath.2020.107300>
30. Lindner D, Fitzek A, Bräuninger H, et al. Association of cardiac infection with SARS-CoV-2 in confirmed COVID-19 autopsy cases. *JAMA Cardiol*. 2020;5(11):1281-1285. <https://doi.org/10.1001/jamacardio.2020.3551>
31. Bois MC, Boire NA, Layman AJ, et al. COVID-19-associated nonocclusive fibrin microthrombi in the heart. *Circulation*. 2021;143(3):230-243. <https://doi.org/10.1161/circulationaha.120.050754>
32. Pellegrini D, Kawakami R, Guagliumi G, et al. Microthrombi as a major cause of cardiac injury in COVID-19: a pathologic study. *Circulation*. 2021;143(10):1031-1042. <https://doi.org/10.1161/circulationaha.120.051828>
33. Ferreira VM, Schulz-Menger J, Holmvang G, et al. Cardiovascular magnetic resonance in nonischemic myocardial inflammation: expert recommendations. *J Am Coll Cardiol*. 2018;72(24):3158-3176. <https://doi.org/10.1016/j.jacc.2018.09.072>
34. Lurz P, Luecke C, Eitel I, et al. Comprehensive cardiac magnetic resonance imaging in patients with suspected myocarditis the MyoRacer-Trial. *J Am Coll Cardiol*. 2016;67(15):1800-1811. <https://doi.org/10.1016/j.jacc.2016.02.013>
35. Kelle S, Bucciarelli-Ducci C, Judd RM, et al. Society for Cardiovascular Magnetic Resonance (SCMR) recommended CMR protocols for scanning patients with active or convalescent phase COVID-19 infection. *J Cardiovasc Magn Reson*. 2020;22(1):61. <https://doi.org/10.1186/s12968-020-00656-6>
36. Yokoo P, Fonseca EKUN, Neto RS, et al. COVID-19 myocarditis: a case report. *Einstein (São Paulo)*. 2020;18(5):eRC5876. <https://doi.org/10.31744/einsteinjournal/2020RC5876>
37. Ng MY, Ferreira VM, Leung ST, et al. Patients recovered from COVID-19 show ongoing subclinical myocarditis as revealed by cardiac magnetic resonance imaging. *J Am Coll Cardiol Img*. 2020;13(11):2476-2478. <https://doi.org/10.1016/j.jcmg.2020.08.012>
38. Puntmann VO, Carerj ML, Wieters I, et al. Outcomes of cardiovascular magnetic resonance imaging in patients recently recovered from coronavirus disease 2019 (COVID-19). *JAMA Cardiol*. 2020;5(11):1265-1273. <https://doi.org/10.1001/jamacardio.2020.3557>
39. Joy G, Artico J, Kurdi H, et al. Prospective case-control study of cardiovascular abnormalities 6 months following mild COVID-19 in healthcare workers. *J Am Coll Cardiol Img*. 2021;14(11):2155-2166. <https://doi.org/10.1016/j.jcmg.2021.04.011>
40. Li X, Wang H, Zhao R, et al. Elevated extracellular volume fraction and reduced global longitudinal strains in patients recovered from COVID-19 without clinical cardiac findings. *Radiology*. 2021;299(2):E230-E240. <https://doi.org/10.1148/radiol.202103998>
41. Wang H, Li R, Zhou Z, et al. Cardiac involvement in COVID-19 patients: mid-term follow up by cardiovascular magnetic resonance. *J Cardiovasc Magn Reson*. 2021;23(1):14. <https://doi.org/10.1186/s12968-021-00710-x>
42. Knight DS, Kotecha T, Razvi Y, et al. COVID-19 myocardial injury in survivors. *Circulation*. 2020;142(11):1120-1122. <https://doi.org/10.1161/CIRCULATIONAHA.120.049252>
43. Kotecha T, Knight DS, Razvi Y, et al. Patterns of myocardial injury in recovered troponin-positive COVID-19 patients assessed by cardiovascular magnetic resonance. *Eur Heart J*. 2021;42(19):1866-1878. <https://doi.org/10.1093/eurheartj/ehab075>
44. Huang L, Zhao P, Tang D, et al. Cardiac involvement in patients recovered from COVID-2019 identified using magnetic resonance imaging. *J Am Coll Cardiol Img*. 2020;13(11):2330-2339. <https://doi.org/10.1016/j.jcmg.2020.05.004>
45. Raman B, Cassar MP, Tunnicliffe EM, et al. Medium-term effects of SARS-CoV-2 infection on multiple vital organs, exercise capacity, cognition, quality of life and mental health, post-hospital discharge. *EClinicalMedicine*. 2021;31:100683. <https://doi.org/10.1016/j.eclinm.2020.100683>
46. Raisi-Estabragh Z, McCracken C, Cooper J, et al. Adverse cardiovascular magnetic resonance phenotypes are associated with greater likelihood of incident coronavirus disease 2019: findings from the UK Biobank. *Aging Clin Exp Res*. 2021;33(4):1133-1144. <https://doi.org/10.1007/s40520-021-01808-z>
47. Halle M, Binzenhöfer L, Mahrholdt H, Johannes Schindler M, Einfeld K, Tschöpe C. Myocarditis in athletes: a clinical perspective. *Eur J Prev Cardiol*. 2021;28:1050-1057. <https://doi.org/10.1177/2047487320909670>
48. Kiel RJ, Smith FE, Chason J, Khatib R, Reyes MP. Coxsackievirus B3 myocarditis in C3H/HeJ mice: description of an inbred model and the effect of exercise on virulence. *Eur J Epidemiol*. 1989;5(3):348-350. <https://doi.org/10.1007/BF00144836>
49. Marijon E, Tafflet M, Celemajer DS, et al. Sports-related sudden death in the general population. *Circulation*. 2011;124(6):672-681. <https://doi.org/10.1161/CIRCULATIONAHA.110.008979>
50. Maron BJ, Udelson JE, Bonow RO, et al. Eligibility and disqualification recommendations for competitive athletes with cardiovascular abnormalities: Task Force 3: Hypertrophic Cardiomyopathy, Arrhythmogenic Right Ventricular Cardiomyopathy and Other Cardiomyopathies, and Myocarditis: a scientific statement from the American Heart Association and American College of Cardiology. *Circulation*. 2015;132(22):e273-e280. <https://doi.org/10.1161/CIR.0000000000000239>
51. Rajpal S, Tong MS, Borchers J, et al. Cardiovascular magnetic resonance findings in competitive athletes recovering from COVID-19

- infection. *JAMA Cardiol.* 2021;116-118. <https://doi.org/10.1001/jamacardio.2020.4916>
52. Daniels CJ, Rajpal S, Greenshields JT, et al. Prevalence of clinical and subclinical myocarditis in competitive athletes with recent SARS-CoV-2 infection. *JAMA Cardiol.* 2021;6(9):1078-1087.
53. Brito D, Meester S, Yanamala N, et al. High prevalence of pericardial involvement in college student athletes recovering from COVID-19. *J Am Coll Cardiol Img.* 2021;14(3):541-555. <https://doi.org/10.1016/j.jcmg.2020.10.023>
54. Matek ŁA, Marczak M, Mitosz-Wieczorek B, et al. Cardiac involvement in consecutive elite athletes recovered from Covid-19: a magnetic resonance study. *J Magn Reson Imaging.* 2021;53(6):1723-1729. <https://doi.org/10.1002/jmri.27513>
55. Vago H, Szabo L, Dohy Z, Merkely B. Cardiac magnetic resonance findings in patients recovered from COVID-19: initial experiences in elite athletes. *J Am Coll Cardiol Img.* 2021;14(6):1279-1281. <https://doi.org/10.1016/j.jcmg.2020.11.014>
56. Clark DE, Parikh A, Dendy JM, et al. COVID-19 myocardial pathology evaluation in athletes with cardiac magnetic resonance (COMPETE CMR). *Circulation.* 2021;143(6):609-612. <https://doi.org/10.1161/CIRCULATIONAHA.120.052573>
57. Starekova J, Bluemke DA, Bradham WS, et al. Evaluation for myocarditis in competitive student athletes recovering from coronavirus disease 2019 with cardiac magnetic resonance imaging. *JAMA Cardiol.* 2021;6(8):945-950. <https://doi.org/10.1001/jamacardio.2020.7444>
58. Martinez MW, Tucker AM, Bloom OJ, et al. Prevalence of inflammatory heart disease among professional athletes with prior COVID-19 infection who received systematic return-to-play cardiac screening. *JAMA Cardiol.* 2021;6(7):745-752. <https://doi.org/10.1001/jamacardio.2021.0565>
59. Hendrickson BS, Stephens RE, Chang JV, et al. Cardiovascular evaluation after COVID-19 in 137 collegiate athletes: results of an algorithm-guided screening. *Circulation.* 2021;143(19):1926-1928. <https://doi.org/10.1161/CIRCULATIONAHA.121.053982>
60. Moulson N, Petek BJ, Drezner JA, et al. SARS-CoV-2 cardiac involvement in young competitive athletes. *Circulation.* 2021;144(4):256-266. <https://doi.org/10.1161/CIRCULATIONAHA.121.054824>
61. Domenech-Ximenes B, Sanz-De La Garza M, Prat-González S, et al. Prevalence and pattern of cardiovascular magnetic resonance late gadolinium enhancement in highly trained endurance athletes. *J Cardiovasc Magn Reson.* 2020;22(1):62. <https://doi.org/10.1186/s12968-020-00660-w>
62. Royal College of Paediatrics and Child Health. Guidance: paediatric multisystem inflammatory syndrome temporally associated with COVID-19 (PIMS). Accessed August 26, 2021. <https://www.rcpch.ac.uk/sites/default/files/2020-05/COVID-19-Paediatric-multisystem-%20inflammatory%20syndrome-20200501.pdf>
63. Centers for Disease Control and Prevention Health Alert Network. Multisystem inflammatory syndrome in children (MIS-C) associated with coronavirus disease 2019 (COVID-19). Accessed August 26, 2021. <https://emergency.cdc.gov/han/2020/han00432.asp>
64. World Health Organization. Multisystem inflammatory syndrome in children and adolescents with COVID-19: scientific brief. Accessed August 26, 2021. <https://www.who.int/news-room/commentaries/detail/multisystem-inflammatory-syndrome-in-children-and-adolescents-with-covid-19>
65. Godfred-Cato S, Bryant B, Leung J, et al. COVID-19-associated multisystem inflammatory syndrome in children—United States, March–July 2020. *MMWR Morb Mortal Wkly Rep.* 2020;69(32):1074-1080. <https://doi.org/10.15585/mmwr.mm6932e2>
66. Feldstein LR, Rose EB, Horwitz SM, et al. Multisystem inflammatory syndrome in U.S. children and adolescents. *N Engl J Med.* 2020;383(4):334-346. <https://doi.org/10.1056/NEJMoa2021680>
67. Elias MD, McCrindle BW, Larios G, et al. Management of multisystem inflammatory syndrome in children associated with COVID-19: a survey from the International Kawasaki Disease Registry. *CJC Open.* 2020;2(6):632-640. <https://doi.org/10.1016/j.cjco.2020.09.004>
68. Diorio C, Henrickson SE, Vella LA, et al. Multisystem inflammatory syndrome in children and COVID-19 are distinct presentations of SARS-CoV-2. *J Clin Invest.* 2020;130(11):5967-5975. <https://doi.org/10.1172/JCI140970>
69. Dufort EM, Koumans EH, Chow EJ, et al. Multisystem inflammatory syndrome in children in New York State. *N Engl J Med.* 2020;383(4):347-358. <https://doi.org/10.1056/NEJMoa2021756>
70. Jiang L, Tang K, Levin M, et al. COVID-19 and multisystem inflammatory syndrome in children and adolescents. *Lancet Infect Dis.* 2020;20(11):e276-e288. [https://doi.org/10.1016/S1473-3099\(20\)30651-4](https://doi.org/10.1016/S1473-3099(20)30651-4)
71. Feldstein LR, Tenforde MW, Friedman KG, et al. Characteristics and outcomes of US children and adolescents with multisystem inflammatory syndrome in children (MIS-C) compared with severe acute COVID-19. *JAMA.* 2021;325(11):1074-1087. <https://doi.org/10.1001/jama.2021.2091>
72. Blondiaux E, Parisot P, Redheuil A, et al. Cardiac MRI in children with multisystem inflammatory syndrome associated with COVID-19. *Radiology.* 2020;297(3):E283-E288. <https://doi.org/10.1148/radiol.2020202288>
73. Jain S, Nolan S, Biller R, et al. Cardiovascular magnetic resonance in myocarditis related to multisystem inflammatory syndrome in children associated with COVID-19. *Congenital Cardiology Today.* 2020;18(8):20-22.
74. Theocharis P, Wong J, Pushparajah K, et al. Multimodality cardiac evaluation in children and young adults with multisystem inflammation associated with COVID-19. *Eur Hear J Cardiovasc Imaging.* 2021;22(8):896-903. <https://doi.org/10.1093/ehjci/jeaa212>
75. Caro-Domínguez P, Navallas M, Riaza-Martin L, et al. Imaging findings of multisystem inflammatory syndrome in children associated with COVID-19. *Pediatr Radiol.* 2021;51(9):1608-1620. <https://doi.org/10.1007/s00247-021-05065-0>
76. Sirico D, Basso A, Reffo E, et al. Early echocardiographic and cardiac MRI findings in multisystem inflammatory syndrome in children. *J Clin Med.* 2021;10(15):3360. <https://doi.org/10.3390/jcm10153360>
77. Bermejo IA, Bautista-Rodriguez C, Fraise A, et al. Short-term sequelae of multisystem inflammatory syndrome in children assessed by CMR. *J Am Coll Cardiol Img.* 2021;14(8):1666-1667. <https://doi.org/10.1016/j.jcmg.2021.01.035>
78. Webster G, Patel AB, Carr MR, et al. Cardiovascular magnetic resonance imaging in children after recovery from symptomatic COVID-19 or MIS-C: a prospective study. *J Cardiovasc Magn Reson.* 2021;23(1):86. <https://doi.org/10.1186/s12968-021-00786-5>
79. Bartoszek M, Matek ŁA, Barczuk-Fałęcka M, Brzewski M. Cardiac magnetic resonance follow-up of children after pediatric inflammatory multisystem syndrome temporally associated with SARS-CoV-2 with initial cardiac involvement. *J Magn Reson Imaging.* 2021;55:883-891. <https://doi.org/10.1002/jmri.27870>
80. National COVID-19 chest image database (NCCID). Accessed June 22, 2021. <https://www.nhs.uk/covid-19-response/data-and-covid-19-national-covid-19-chest-imaging-database-nccid/>
81. SCMR COVID-19 registry. Accessed June 22, 2021. <https://scmr.org/page/COVID-19Registry>
82. World Health Organization. COVID-19 clinical management: living guidance. Accessed June 22, 2021. <https://www.who.int/publications/i/item/WHO-2019-nCoV-clinical-2021-1>
83. National Institutes of Health. COVID-19 treatment guidelines: clinical spectrum of SARS-CoV-2 infection. Accessed June 22, 2021. <https://www.covid19treatmentguidelines.nih.gov/overview/clinical-spectrum>
84. Kim JH, Levine BD, Phelan D, et al. Coronavirus disease 2019 and the athletic heart: emerging perspectives on pathology, risks, and return to play. *JAMA Cardiol.* 2021;6(2):219-227. <https://doi.org/10.1001/jamacardio.2020.5890>
85. Children's Hospital of Philadelphia. Multisystem inflammatory syndrome (MIS-C) clinical pathway—emergency, ICU and inpatient. Accessed June 22, 2021. <https://www.chop.edu/clinical-pathway/multisystem-inflammatory-syndrome-mis-c-clinical-pathway>

KEY WORDS cardiovascular magnetic resonance, COVID-19, ischemia, multisystem inflammatory syndrome, myocardial injury, myocarditis, SARS-CoV-2

APPENDIX For supplemental tables, please see the online version of this paper.