

Multivariate regression trees as an “explainable machine learning” approach to explore relationships between hydroclimatic characteristics and agricultural and hydrological drought severity

case of study Cesar River basin

Paez Trujillo, Ana; Cañon, Jeffer; Hernandez, Beatriz; Corzo, Gerald; Solomatine, Dimitri

DOI

[10.5194/nhess-23-3863-2023](https://doi.org/10.5194/nhess-23-3863-2023)

Publication date

2023

Document Version

Final published version

Published in

Natural Hazards and Earth System Sciences

Citation (APA)

Paez Trujillo, A., Cañon, J., Hernandez, B., Corzo, G., & Solomatine, D. (2023). Multivariate regression trees as an “explainable machine learning” approach to explore relationships between hydroclimatic characteristics and agricultural and hydrological drought severity: case of study Cesar River basin. *Natural Hazards and Earth System Sciences*, 23(12), 3863–3883. <https://doi.org/10.5194/nhess-23-3863-2023>

Important note

To cite this publication, please use the final published version (if applicable).
Please check the document version above.

Copyright

Other than for strictly personal use, it is not permitted to download, forward or distribute the text or part of it, without the consent of the author(s) and/or copyright holder(s), unless the work is under an open content license such as Creative Commons.

Takedown policy

Please contact us and provide details if you believe this document breaches copyrights.
We will remove access to the work immediately and investigate your claim.



Multivariate regression trees as an “explainable machine learning” approach to explore relationships between hydroclimatic characteristics and agricultural and hydrological drought severity: case of study Cesar River basin

Ana Paez-Trujillo^{1,2,3}, Jeffer Cañon³, Beatriz Hernandez³, Gerald Corzo¹, and Dimitri Solomatine^{1,2,4}

¹IHE Delft Institute for Water Education, P.O. Box 3015, 2601 DA Delft, the Netherlands

²Delft University of Technology, Water Resources Section, P.O. Box 5048, 2600 GA Delft, the Netherlands

³Fundación Natura Colombia, P.O. 111311, Carrera 21 No. 39–43 Bogotá D.C., Colombia

⁴Water Problems Institute of RAS, 119333, Gubkina 3, Moscow, Russia

Correspondence: Ana Paez-Trujillo (a.m.paeztrujillo@tudelft.nl)

Received: 28 March 2023 – Discussion started: 12 April 2023

Revised: 25 October 2023 – Accepted: 28 October 2023 – Published: 18 December 2023

Abstract. The typical drivers of drought events are lower than normal precipitation and/or higher than normal evaporation. The region’s characteristics may enhance or alleviate the severity of these events. Evaluating the combined effect of the multiple factors influencing droughts requires innovative approaches. This study applies hydrological modelling and a machine learning tool to assess the relationship between hydroclimatic characteristics and the severity of agricultural and hydrological droughts. The Soil Water Assessment Tool (SWAT) is used for hydrological modelling. Model outputs, soil moisture and streamflow, are used to calculate two drought indices, namely the Soil Moisture Deficit Index and the Standardized Streamflow Index. Then, drought indices are utilised to identify the agricultural and hydrological drought events during the analysis period, and the index categories are employed to describe their severity. Finally, the multivariate regression tree technique is applied to assess the relationship between hydroclimatic characteristics and the severity of agricultural and hydrological droughts.

Our research indicates that multiple parameters influence the severity of agricultural and hydrological droughts in the Cesar River basin. The upper part of the river valley is very susceptible to agricultural and hydrological drought. Precipitation shortfalls and high potential evapotranspiration drive severe agricultural drought, whereas limited precipitation influences severe hydrological drought. In the middle part of the river, inadequate rainfall partitioning and an unbalanced

water cycle that favours water loss through evapotranspiration and limits percolation cause severe agricultural and hydrological drought conditions. Finally, droughts are moderate in the basin’s southern part (Zapatocha marsh and the Serranía del Perijá foothills). Moderate sensitivity to agricultural and hydrological droughts is related to the capacity of the subbasins to retain water, which lowers evapotranspiration losses and promotes percolation. Results show that the presented methodology, combining hydrological modelling and a machine learning tool, provides valuable information about the interplay between the hydroclimatic factors that influence drought severity in the Cesar River basin.

1 Introduction

Projections indicate that drought frequency, severity, and duration are expected to increase globally in the 21st century (United Nations Office for Disaster Risk Reduction, 2021). Upcoming soil moisture drought scenarios predict statistically significant large-scale drying, especially in scenarios with strong radiative forcing in Central America and tropical South America (Lu et al., 2019). A similar trend is predicted for hydrological drought severity, which is expected to increase by the end of the 21st century, with regional hotspots in central and western Europe and South America, where

the frequency of hydrological drought may increase by more than 20 % (Prudhomme et al., 2014). The intensification of drought characteristics (in combination with other factors) could force the migration of up to 216 million people by 2050 (Clement et al., 2021), increase wildfire risk and tree mortality, and negatively affect regional air quality, among other ecosystem impacts (Vicente-Serrano et al., 2020).

It is essential that we better understand drought drivers if we are to foster preparedness and resilience to projected drought events. Remarkable progress has been achieved in understanding drought propagation through the hydrological cycle (Van Loon et al., 2012). Drought occurs due to climatic extremes, which may be enhanced or alleviated by region characteristics and anthropogenic influence (Seneviratne et al., 2012; Hao et al., 2022; Tjeldeman et al., 2018). Typically, droughts are triggered by atmospheric circulation and weather systems that combine to cause lower-than-normal precipitation and/or higher-than-normal evaporation in a region (Sheffield and Wood, 2011a; Destouni and Verrot, 2014). Reduced precipitation leads to a decrease in soil moisture, causing agricultural drought. When soil moisture depletion is high, it is restored in the wet season, thus reducing subsurface flow and groundwater recharge and giving rise to hydrological drought (Iglesias et al., 2018). Regional characteristics such as soil type, elevation, slope, vegetation cover, drainage networks, water bodies, and groundwater systems play a relevant role in response to the climate anomalies that affect drought propagation and contribute to different levels of agricultural and hydrological drought (Sheffield and Wood, 2011a; Zhang et al., 2022). Equally important, human interventions in the hydrological cycle (e.g. reservoirs, water diversion, deforestation, over-pumping groundwater, overgrazing, urbanisation) can reduce water supplies, triggering a drought situation or exacerbating a climate-driven drought (Rangecroft et al., 2019; Wang et al., 2021).

Drought planning also uses research progress on drought characterisation. Using drought indices is a widespread methodology for drought characterisation (Zargar et al., 2011). Drought indices are computed numerical representations of drought severity (Keyantash and Dracup, 2002; Hao and Singh, 2015). Severity refers to the drought strength, also described as the deficit degree (Cavus and Aksoy, 2020), soil moisture deficit in the case of agricultural droughts, and streamflow deficit in the case of hydrological droughts. Generally, severity is divided into different categories (e.g. moderate, severe, extreme), providing a qualitative assessment of the drought state in a region during a given period. Drought indices (and their categories) are crucial for tracking or anticipating drought-related damage and impacts (WMO and GWP, 2016).

Despite remarkable progress achieved in understanding the drought-generating process and drought characterisation, there is still a need for studies that assess the complex interplay between the different drivers of droughts and how their combined effect influences drought characteristics (e.g. du-

ration, severity, intensity) (Valiya Veetil and Mishra, 2020). Previous studies have focused on the influence of one driver (Mastrotheodoros et al., 2020; Shah et al., 2021; Margariti et al., 2019; Xu et al., 2019), and some of the methodologies applied cannot adequately address the non-linear relationship between climate, basin processes, and droughts characteristics (Saft et al., 2016; Van Loon, 2015; Peña-Gallardo et al., 2019).

We have found two studies employing machine learning to assess the non-linear relationship between climate and basin processes and droughts (Valiya Veetil and Mishra, 2020; Konapala and Mishra, 2020). The studies reported relevant findings on the parameters driving droughts; however, the selected techniques showed a limitation for the drought analysis since they allow only one output variable. In both cases, it was necessary to apply the chosen technique multiple times to find the relationships between hydroclimatic parameters and the different categories of the evaluated drought characteristics. For example, Valiya Veetil and Mishra (2020) used a classification and regression tree (CART) to identify the variables influencing drought duration. CART allows one output variable; then, the authors applied the approach three times to evaluate the variables influencing short-term, medium-term, and long-term drought events. Meanwhile, Konapala and Mishra (2020) used a random forest (RF) algorithm to identify the climate and basin parameters influencing the characteristics (duration, frequency, and intensity) of three different drought regimes (long duration and mild intensity, moderate duration and intensity, short duration and high intensity). As the core of RF is a decision tree that allows one output variable (in this case, each characteristic of each drought regime), the authors repeated the procedure nine times, one for each drought regime and characteristic.

The aforementioned research shows the potential of machine learning techniques for drought-related analysis; nevertheless, it also suggests that assessing the parameters driving drought characteristics requires techniques capable of simultaneously handling the different categories of drought characteristics. Commonly used in ecology to relate independent environmental conditions to populations of multiple species, the multivariate regression tree (MVRT) arises as a suitable technique for this purpose. MVRT is a constrained clustering technique that links explanatory variables to multiple response variables while maintaining the individual characteristics of the responses. Significantly, the technique does not assume a linear relationship between explanatory and response variables. Furthermore, it allows for the so-called “interpretable machine learning” algorithms that make decisions and predictions understandable to humans (Molnar, 2022). MVRT interpretably is a relevant attribute for drought researchers and planners since it allows them to identify the parameters influencing severe (or mild) drought conditions.

To understand the relationship between the drivers of droughts and the individual categories of agricultural and

hydrological drought severity, this study employs a three-step methodology. The first is hydrological modelling. We used SWAT to simulate the hydroclimatic parameters required for analysing droughts and applying the MVRT approach. The second is the analysis of droughts. SWAT outputs, soil moisture and streamflow, are used to calculate the drought indices, i.e. the Soil Moisture Deficit Index (SMDI) and the Standardized Streamflow Index (SSI). Drought indices are utilised to identify the agricultural and hydrological drought events in the analysis period. Then, we calculate the months for each drought severity category during the observed droughts. Finally, the MVRT approach is applied to assess the relationship between hydroclimatic characteristics (represented by the simulated parameters in each sub-basin) and drought severity categories (represented by the total number of months for each drought severity category in each subbasin). The analyses for agricultural and hydrological droughts were conducted separately; thus, two MVRTs were obtained. A concrete application of this methodology is developed in the Cesar River basin (Colombia, South America).

2 Study location and methods

2.1 Case study

Figure 1 presents the Cesar River basin's location, topography (Fig. 1a), and land use (Fig. 1b). The basin is located between 72°53' W, 74°04' W longitude and 10°52'00" N, 7°41'00" N latitude (Colombia). It extends for an area of 22 312 km². The basin's topography defines three distinct climatic regions (Universidad del Atlántico, 2014). In the north is La Sierra Nevada de Santa Marta. This sector is characterised by steeply sloped mountains reaching up to 5700 m above sea level (m.a.s.l.). The temperature ranges from 3 to 6 °C, and the mean annual precipitation is 1000 mm. In the east is La Serranía del Perijá. This mountainous area is an extension of the eastern branch of the Andes range. In this sector, the altitude ranges from 1000 to 2000 m a.s.l. The average temperature is 24 °C, and the average annual precipitation varies from 1000 to 2000 mm. Lastly, the valley of the Cesar River and the Zapatosa marsh are in the west and south of the basin, respectively. The valley is characterised by flat topography and a complex system of marshes formed by the Cesar River floodplains and its confluence with the Magdalena River. The average temperature is 28 °C, and the mean annual precipitation is 1500 mm. The basin's annual rainfall pattern is bimodal. The dry season occurs from December to April, followed by a rainy season from April to May. From June to July, precipitation decreases, and the main rainfall events occur between August and November.

The predominant land use is pasture, followed by agriculture (Universidad del Atlántico, 2014). The primary land use in La Sierra Nevada foothills is pastures for cattle farming. In

La Serranía del Perijá, the high-altitude areas are covered by forests in very good condition; at the lower altitudes, the principal land use is agriculture, particularly subsistence crops. The Cesar River valley's soils are rich in nutrients, providing favourable conditions for agriculture. The riverbanks are covered by forests with low tree density.

The Zapatosa marsh is recognised as one of the most important wetlands in the country, and considering the relevance of this ecosystem, it was declared a Ramsar site in 2018 (Ramsar sites are wetlands of international importance for containing rare or unique wetland types or for their relevance in conserving biological diversity). Nevertheless, the region is threatened by high water demand of monocrops and the overexploitation of forest resources. In addition, climate change projections indicate that by 2070, the basin's temperature may increase by 2.7 °C, and precipitation may reduce by 10 % compared to the reference period 1971–2000 (Universidad del Magdalena et al., 2017). Accordingly, multiple initiatives are oriented to improve water management and create resilience to hydroclimatic extremes (Ministerio de Ambiente y Desarrollo Sostenible (Colombia), 2015).

2.2 Methods

Figure 2 illustrates the three-step methodology applied in this study. Section 2.2.1 describes the hydrological modelling and Sect. 2.2.2 the drought analysis. Section 2.2.3 presents the description of the MVRT technique.

2.2.1 Hydrological modelling

The SWAT model with an ArcSWAT extension was used to simulate the hydrological balance of the Cesar River. SWAT is a continuous-time, semi-distributed, and process-based river watershed scale model developed by the Agricultural Research Service of the United States Department of Agriculture (ARS-USDA). The model is designed to simulate the quality and quantity of surface and groundwater and predict the environmental impacts of land management and climate change (Neitsch et al., 2011). SWAT divides the basin area up to the outlet point into several subbasins. Each subbasin is further split into multiple hydrological response units (HRUs), which are areas within the subbasin with common combinations of land cover, soil type, and slope (Arnold et al., 2012).

Model setup

The model was built for the period from 1987 to 2018. The Cesar River basin was divided into 313 subbasins with a median area of 70 km². Four slope classes were set for the HRUs generation: flat (0 %–2 %), gentle (2 %–10 %), steep (10 %–35 %), and considerably steep (> 36 %) (GEF et al., 2020, 2021). The following methods were used to model the principal hydrological processes: the soil conservation service curve number (SCS-CN) was used to simulate surface

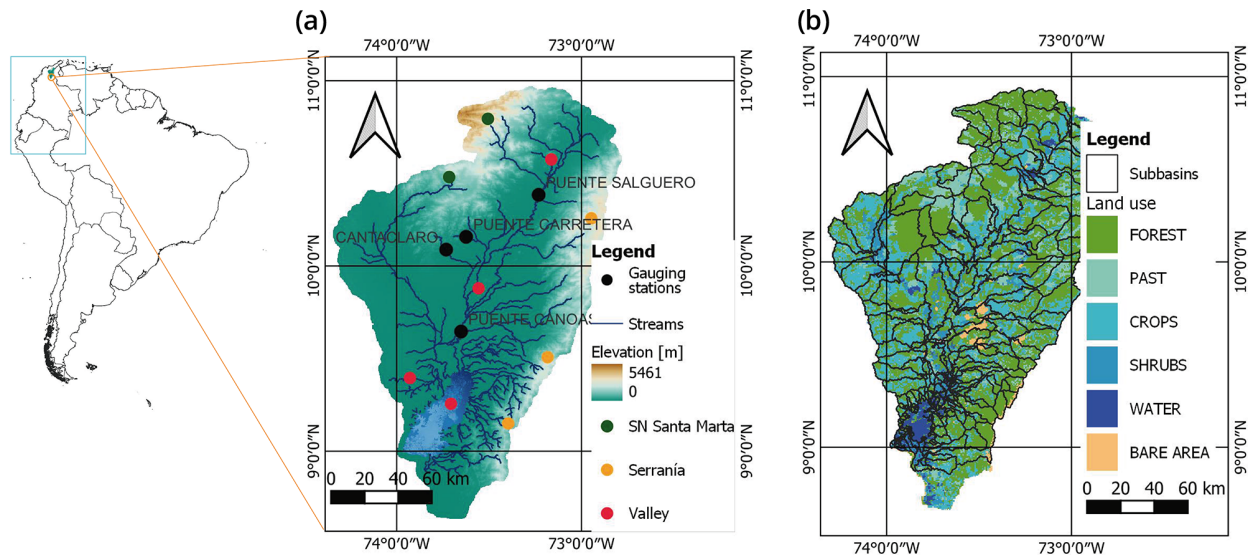


Figure 1. Cesar River basin: (a) topography and (b) land use.

runoff, potential evapotranspiration was estimated using the Hargreaves method, and water was routed through the channel network using the variable storage routing method. The details and sources of the SWAT model input data are presented in Table 1.

Model calibration and validation

We used the SWAT-CUP software package with Sequential Uncertainty Fitting version 2 (SUFI-2) for automatic model calibration and validation. SUFI-2 operates by performing several iterations. The calibration parameters are sampled in each iteration using the Latin hypercube technique against the objective function values (Abbaspour et al., 2018).

Based on expert judgement and the available literature (ASABE, 2017; Arnold et al., 2012), the following SWAT parameters were used in the calibration and validation process: baseflow alpha factor (ALPHA_BF), effective hydraulic conductivity in main channel alluvium (CH_K), Manning's value for the main channel (CH_N2), SCS runoff curve number for moisture condition II (CN2), soil evaporation compensation factor (ESCO), groundwater delay (GW_DELAY), threshold depth of water in the shallow aquifer required for return flow to occur (GWQMN), deep aquifer percolation fraction (RCHRG_DP), threshold depth of water in the shallow aquifer for percolation to the deep aquifer to occur (REVAPMN), and available water capacity of the soil layer (SOL_AWC). In the calibration process, a physically meaningful range is set for each parameter in each iteration. Then, a new parameter value (within the range) is selected and applied at each HRU or subbasin.

The model was calibrated from 1985 to 2002 and validated from 2003 to 2018 using the streamflow series from four stream gauges (Fig. 1a). The source of the discharge data is

the Institute of Hydrology, Meteorology and Environmental Studies (IDEAM), Colombia. The first 2 years were used as a warming-up period in both cases. Thus, performance indicators were calculated for 1987 to 2002 (calibration) and 2005 to 2018 (validation). The model's performance for simulating streamflow was evaluated using the Nash–Sutcliffe efficiency (NSE) and percent bias (PBIAS), represented by Eqs. (1) and (2), respectively:

$$\text{NSE} = 1 - \frac{\sum_{i=1}^N (O_i - P_i)^2}{\sum_{i=1}^N (O_i - \bar{O})^2} \quad (1)$$

$$\text{PBIAS} = \frac{\sum_{i=1}^N (O_i - P_i) \times 100}{\sum_{i=1}^N O_i}, \quad (2)$$

where O_i is the observed data, P_i the predicted data, \bar{O} the mean of the observed data, and N the number of observations during the simulation period.

The NSE is a dimensionless indicator ranging from $-\infty$ to 1, with 1 representing a perfect match between the observed and simulated values (Moriassi et al., 2007). The PBIAS measures the average tendency of the simulated values to be larger or smaller than the observed values. The ideal PBIAS is 0, with low-magnitude values indicating accurate model simulation (Moriassi et al., 2007).

2.2.2 Agricultural and hydrological drought analysis

The present study used the soil moisture deficit index (SMDI) to analyse agricultural droughts. We chose this in-

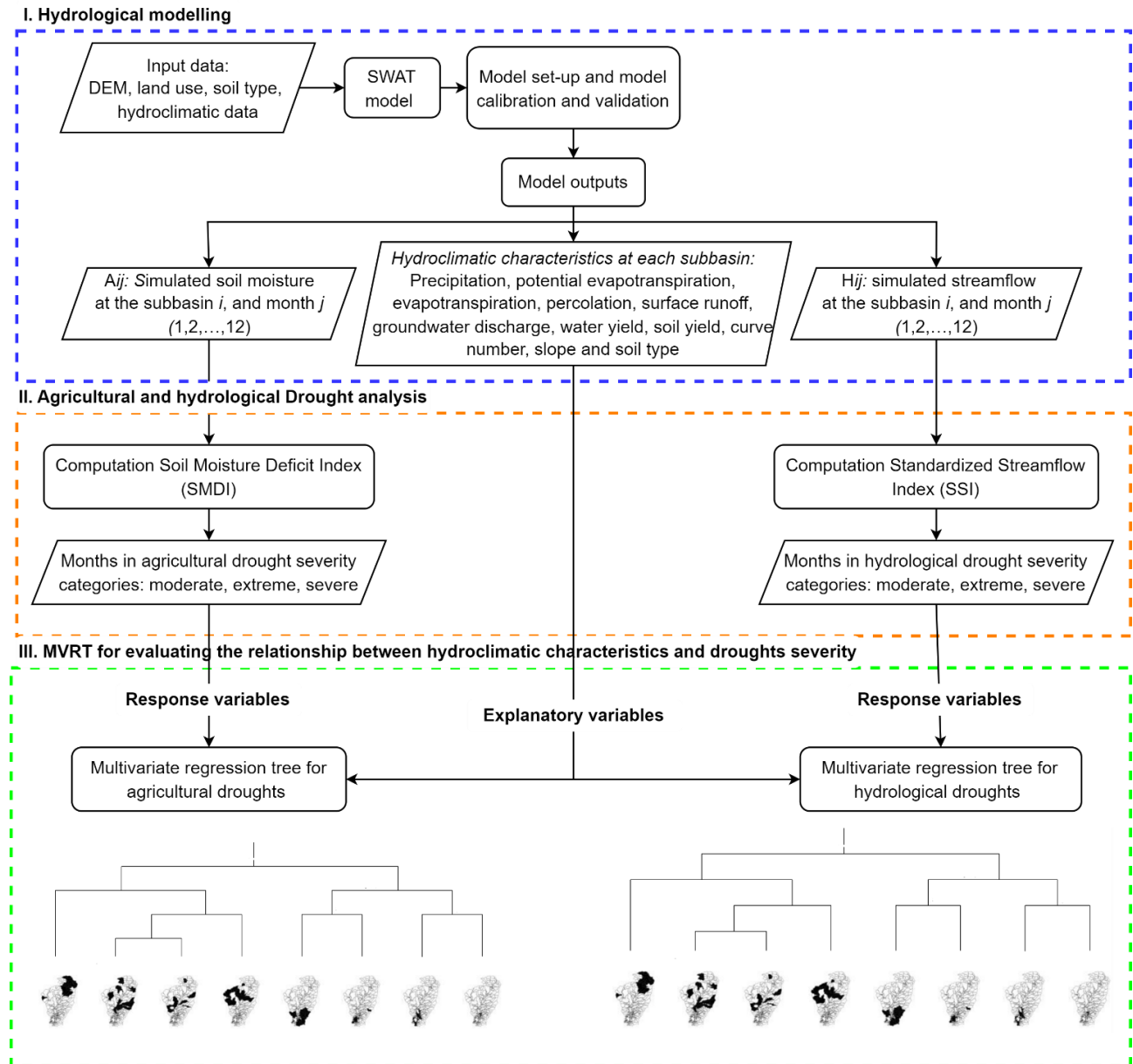


Figure 2. Flow chart of the methodology.

dex since it was developed to use simulated soil moisture as the input parameter (Narasimhan and Srinivasan, 2005). SWAT calculates the soil water content of the entire soil profile. Three soil layers were identified in the Cesar River basin. The first layer thickness (vertical distance from the surface) reaches up to 350 mm, the second 1000 mm, and the third 1500 mm.

The computation procedure to determine the soil moisture deficit used the long-term soil moisture characteristics and the soil moisture conditions during the drought period. The indicator was scaled between -4 and 4 to allow the spatial comparison of the drought index, regardless of climatic

characteristics (Narasimhan and Srinivasan, 2005). Negative values of SMDI indicate dry periods, while positive values indicate wet periods (compared to the region’s normal conditions). Per the SMDI, agricultural drought severity was divided into three categories: moderate drought (SMDI -2.0 to -2.99), severe drought (SMDI -3.0 to -3.99), and extreme drought (SMDI -4). The following procedure was applied to

Table 1. SWAT model input data.

Data type	Details	Source
Digital elevation model	25 × 25 m	Dataset ALOS PALSAR L1.0, Cartography 1 : 25 000 Geographic Institute Agustín Codazzi (IGAC), Colombia
Soil map	300 × 300 m	Soil profiles Project GEF Magdalena–Cauca VIVE, GEF, BID, Fundación Natura, Colombia
Land use map	25 × 25 m	Land use map Geographic Institute Agustín Codazzi (IGAC), Colombia
Daily precipitation and daily minimum and maximum temperature	Period 1985–2018 (34 years)	Institute of Hydrology, Meteorology and Environmental Studies (IDEAM), Colombia

compute the SMDI at each subbasin:

$$SD_{ij} = \frac{SW_{ij} - MSW_j}{MSW_j - \min SW_j} \times 100, \text{ if } SW_{ij} \leq MSW_j \quad (3)$$

$$SD_{ij} = \frac{SW_{ij} - MSW_j}{\max SW_j - MSW_j} \times 100, \text{ if } SW_{ij} > MSW_j, \quad (4)$$

where SD_j is the soil moisture deficit (%), SW_j is the monthly soil water available in the soil profile (mm), MSW_j is the long-term median available soil water in the soil profile (mm), and $\max SW_j$ and $\min SW_j$ are the maximum and minimum soil water available in the soil profile (mm), respectively, ($i = 1987\text{--}2018$ and $j = 1\text{--}12$).

The $SMDI_j$ of any given month was calculated using Eq. (5):

$$SMDI_j = 0.5 \times SMDI_{j-1} + \frac{SD_j}{50}, \quad (5)$$

where $SMDI_{j-1}$ is the SMDI from the previous month.

SMDI was not calculated for the subbasins that correspond to the Zapatos marsh. In these subbasins, the predominant land cover is water. See Fig. 5.

We used a SSI to represent hydrological droughts. The indicator was introduced by Modarres (2007) and further investigated by Vicente-Serrano et al. (2011). The index is statically analogous to the commonly used standardised precipitation index (SPI) introduced by McKee et al. (1993). SSI values mainly range from -2.0 (extremely dry) to 2.0 (extremely wet), and hydrological drought severity is divided into three categories: moderate drought (SSI -1.0 to -1.49), severe drought (SSI -1.5 to -1.99), and extreme drought (SSI -2.0 or less). The procedure to calculate SSI consists of converting streamflow values to standardised anomalies (i.e. z scores). To this aim, the monthly simulated streamflow at each subbasin in the analysis period (1987 to 2018) was fitted to the gamma probability distribution function.

SMDI and SSI were calculated monthly using the simulated soil water and streamflow values at each subbasin. The

drought events during the period of analysis were then identified. A drought (agricultural or hydrological) event was assumed to occur in the basin when a number of subbasins (covering at least 30 % of the basin's total area) were in a drought state (moderate, severe, or extreme) for at least two consecutive time steps (i.e. in this study month). According to the spatial and temporal thresholds, a drought event began when both conditions were met and continued until one of them failed to be met. It is worth highlighting that the minimal extension of a drought is not defined, but it is accepted that droughts typically occur on a large scale (Sheffield and Wood, 2011b). Setting a spatial threshold is a common practice to maintain a minimum drought-affected and prevent identifying isolated areas experiencing dry spells as drought events (Brunner et al., 2021). The temporal threshold was used to avoid including short-term droughts (i.e. daily or weekly) in the analysis (Li et al., 2020).

2.2.3 Multivariate regression tree approach for evaluating the relationships between hydroclimatic characteristics and drought severity

MVRT is an extension of the popular regression tree (Breiman, 2001), but it differs in that it allows for multiple outputs (see De'ath, 2002). It recursively splits a quantitative response variable (predictand, output) controlled by a set of numerical or categorical explanatory variables (predictors, input). The approach yields a set of non-linear models, each a piece-wise linear regression model (of zero order). An MVRT result is a tree whose terminal groups (leaves) of instances (input–output vectors) comprise subsets of samples selected to minimise the within-group sums of squares. Each successive split is given by a threshold value of the explanatory variables (Borcard et al., 2018). MVRT is applied to dataset exploration, description, and prediction (De'ath, 2002). In this study, the explanatory variables are the hydroclimatic parameters at each subbasin, represented by the

average value of each parameter during the analysis period (1987 to 2018). The multivariate response is the number of months observed in the three drought severity categories (moderate, severe, and extreme) at each subbasin. The analyses for agricultural and hydrological droughts were conducted separately; thus, two MVRTs were obtained.

The following MVRT attributes are relevant for this study. First, MVRT can capture the non-linear interactions between the parameters influencing droughts and their severity. Second, the technique can handle numerical and categorical hydroclimatic parameters influencing drought severity (explanatory variables). Third, MVRT's capability to handle multiple outputs allowed us to evaluate the influence of the hydroclimatic parameters on moderate, severe, and extreme drought conditions simultaneously (response variables). Simultaneous analysis of different drought categories provides a comprehensive understanding of the drought-generating process and the factors influencing severe (or mild) drought conditions. Fourth, MVRT results can be easily visualised and interpreted. The resulting tree structure provides a clear representation of the relationship between the drivers of droughts and the severity of agricultural and hydrological droughts.

For building the MVRT, R software was used, namely, package *mvpart* (De'ath, 2006). Before the analysis, the sets of explanatory and response variables were transformed to compare the descriptors measured in different units and to modify the variables' weights. The matrix of explanatory variables was standardised to a mean of 0 and a standard deviation of 1. The matrix of response variables was standardised by the column maximum, then again by the row total (Wisconsin double standardisation).

Datasets

Set of explanatory variables

To select the set of explanatory variables, we used the outcomes of previous studies on governing drivers of droughts (Zhang et al., 2022; Sheffield and Wood, 2011a). Table 2 describes the 11 parameters selected as the potential drivers of droughts. The used values correspond to the parameters' average in the analysis period (1987 to 2018). The averages were computed using the SWAT model results at each subbasin. We used the dominant category at each subbasin for the curve number, the slope, and the soil type (categorical variables).

Set of response variables

We used the drought analysis outcomes to define the response variables (Table 3). Following the methodology presented in Sect. 2.2.2, we identified the agricultural and hydrological drought events during the analysed period. After identifying the drought events, we counted the months for each drought

severity category at each subbasin. The observed months for each one of the three drought categories were used as response variables. The analyses for agricultural and hydrological droughts were conducted separately; thus, two sets of response variables were obtained.

Building the MVRT: constrained partitioning of the data and cross-validation

Building the MVRT consisted of two processes: (1) the constrained partitioning of the data and (2) the cross-validation of the results. The *mvpart* package runs both processes in parallel. The two procedures are briefly explained below, and a more detailed description can be found in Borcard et al. (2018).

The data partitioning consisted of three steps. First, for each explanatory variable all possible partitions of the sites (subbasins) were generated into two groups. Second, for each partition, the resulting sum of within-group sums of squared distances to the group means for the response data (within-group SS) was calculated. Within-group SS is equivalent to standard deviation. Lastly, the partition into two groups to minimise the within-group SS and the threshold value/level of the explanatory variable was retained. These steps were repeated within the two previously established subgroups until all the objects formed their own groups. For each tree that was computed, the relative error was calculated as the sum of the within-group SS of all leaves divided by the overall SS of the data. This procedure for MVRT is equivalent to the one originally proposed by Breiman (2001) for his regression tree technique.

A cross-validation procedure was used to prune the tree and identify the optimal tree size (Kuhn and Johnson, 2013; Legendre and Legendre, 2012). The cross-validation procedure was performed automatically using *mvpart*. Per this procedure, the data were randomly divided into roughly equal-sized test groups. Each test group was held out in turn while the tree was fitted using the remaining groups. The distances between the centroids of the objects at tree leaves and each object of the test group were then calculated. Finally, the objects of the test group were allocated to the closest leaf of the constructed tree. An overall relative error statistic (relative cross-validation error, CVRE) was calculated for each group using all n objects, per Eq. (6):

$$\text{CVRE}_{(k)} = \frac{\sum_{i=1}^n \sum_{j=1}^p (y_{ij(k)} - \hat{y}_{j(k)})^2}{\sum_{i=1}^n \sum_{j=1}^p (y_{ij} - \bar{y}_j)^2}, \quad (6)$$

where $y_{ij(k)}$ is the value of variable j for object i belonging to test group k , $\hat{y}_{j(k)}$ is the value of that same variable at the centroid of the leaf closest to object i , and the denominator is the overall sum of squares of the response data.

This cross-validation process was repeated several times for consecutive and independent divisions of the data into

Table 2. Explanatory variables used in MVRT.

Hydroclimatic parameter	Abbreviation	Unit	Definition
Precipitation	PRECP	mm	Average precipitation at each subbasin
Potential evapotranspiration	PET	mm	Average potential evapotranspiration at each subbasin
Evapotranspiration	ET	mm	Average actual evapotranspiration at each subbasin
Percolation	PERC	mm	Average percolation past the root zone
Surface runoff	SURFQ	mm	Average surface contribution to the streamflow at each subbasin
Groundwater	GRWQ	mm	Average groundwater contribution to the streamflow at each subbasin
Water yield	WYLD	mm	Average amount of water that leaves the subbasin and contributes to the streamflow at each subbasin
Sediment yield	SYLD	t ha ⁻¹	Average sediment from the subbasin transported into the reach
Curve number	CN	–	Dominant curve number at each subbasin
Slope	SLP	–	Dominant slope at each subbasin
Hydrologic soil group	STY	–	Dominant hydrologic soil group (A, B, C, and D) at each subbasin. The soil hydrologic groups refer to the soil's infiltration characteristics. Properties of each soil type can be found in USDA (2007)

Table 3. Response variables used in MVRT.

Drought category	Abbreviation	Unit	Definition
Moderate agricultural/hydrological drought	MOD	month	Number of months in the moderate agricultural drought category during the drought events identified in the simulation period at each subbasin
Severe agricultural/hydrological drought	SEV	month	Number of months in the severe agricultural drought category during the drought events identified in the simulation period at each subbasin
Extreme agricultural/hydrological drought	EXT	month	Number of months in the extreme agricultural drought category during the drought events identified in the simulation period at each subbasin

test groups. For each group, the mean and standard deviation of all CVRE were computed. The CVRE varied from 0 for perfect predictors to close to 1 for poor predictors (as error increases, CVRE increases indefinitely). Among the mvpart function arguments, we used 10 cross-validation groups (function argument, $xval = 10$) and 100 iterations (function argument $xmult = 100$). The tree was selected using interactive cross-validation (function argument $xv = \text{"pick"}$).

To choose the size of the tree that retained the most descriptive partition, we used the approach suggested by De'ath

(2002). According to the author the tree with the smallest CVRE offers the best combination of explanatory power and interpretability. Once the tree was built, the proportion of explained variance (EV) was calculated as $1 - RE_{tree}$ (tree relative error) (Cannon, 2012).

Table 4. SWAT model performance simulating streamflow.

Gauging station	Calibration		Validation	
	NSE	PBIAS [%]	NSE	PBIAS [%]
Puente Salguero	0.61	4.28	0.52	−8.3
Puente Carretera	0.50	−5.34	0.52	7.6
Cantaclaro	0.58	−11.30	0.50	−11.7
Puente Canoas	0.70	−1.34	0.57	10.64

Table 5. SWAT model performance simulating flows in the dry season.

Gauging station	Calibration		Validation	
	NSE	PBIAS [%]	NSE	PBIAS [%]
Puente Salguero	0.65	−19.4	0.53	−21.3
Puente Carretera	0.67	−15.3	0.53	17.2
Cantaclaro	0.67	−3.6	0.58	16.3
Puente Canoas	0.55	−15.7	0.60	−13.5

3 Results

3.1 SWAT model calibration and validation

Table 4 summarises the calibration and validation performance indicators for the SWAT model at each gauging station. The calibration and validation models simulated monthly stream flows with NSE values equal to or greater than 0.50 and relatively low PBIAS values (GEF et al., 2020, 2021). According to the performance ratings for calibrating and validating hydrological models, NSE and PBIAS values indicated that the model was appropriate for simulating streamflow (Moriassi et al., 2007). Figure 3 presents the model hydrographs at each gauging station for the calibration and validation periods. The locations of the stations can be found in Fig. 1.

Since the study focuses on droughts, the model performance simulating streamflow in the dry season was analysed separately. Performance indicators were calculated for the period corresponding to the basin's dry season (December to March). The intermediate period of precipitation decrease from June to July was also included in this analysis. Table 5 summarises the calibration and validation performance indicators in the dry season. According to the rating guidelines, the model performance simulating streamflow in the dry season is satisfactory (ASABE, 2017).

3.2 Hydroclimatic drivers of droughts

Figure 4 presents the numerical and categorical hydroclimatic parameters used as potential drivers of droughts. Figure 4a to h present the multi-annual average of the numerical

hydroclimatic drivers of droughts at each subbasin. The average was calculated using the hydrological model's results during the simulation period (1987 to 2018). Figure 4i to k present the categorical drivers: the curve number, slope, and soil type. The dominant category at each subbasin is shown in Fig. 4i to k. The dataset of explanatory variables was created from the values presented in Fig. 4.

3.3 Drought events during the simulation period and their duration

We identified the drought events and estimated their duration following the definition of droughts presented in Sect. 2.2.2. A month was summed to the duration of an event when a number of subbasins, covering at least 30 % of the basin's total area, were in a drought state (moderate, severe, or extreme). The identified droughts in the simulation period were in good agreement with the chronology of drought events in Colombia described at the National Study of Water (Instituto de Hidrología, 2019). Table 6 shows the dates and durations of the drought events.

After identifying the agricultural and hydrological drought events, it was possible to determine the number of months for each drought category in each subbasin, as represented in Figs. 5 and 6. The results presented in Figs. 5 and 6 are the response variables for the MVRT technique.

3.4 Multivariate regression tree

In this section, we describe the results of the MVRT technique applied to identify the governing drivers of agricultural and hydrological drought severity and their critical thresholds.

3.4.1 Drivers of agricultural drought

Figure 7 presents the tree generated by R software, the number of subbasins clustered at each terminal group (variable “*n*”), and the spatial distribution of these subbasins. The tree consists of 5 levels of split and 12 leaves. The minimum value of the cross-validation error (CVRE = 0.46) was used to select the tree size. The relative error of the MVRT was 0.19, and the EV was 0.81; 8 represents the tree's numerical output: namely, the number of months for each drought category. The scattering of the outputs in each leaf allows us to identify the most susceptible subbasins to agricultural droughts.

The MVRT indicated that actual evapotranspiration was a strong driver of agricultural droughts; it appeared three times at different tree levels of split (Fig. 7). The subbasins were split at the first level according to ET (924 mm). At the second level of split, precipitation (1318 mm) was used for the left branch of the tree and percolation (271 mm) for the right branch. Then, the left branch was recursively split as follows: at the third level, according to potential evapotranspiration (1888 mm) and evapotranspiration (1191 mm); at the fourth level, according to evapotranspiration (1064 mm) and

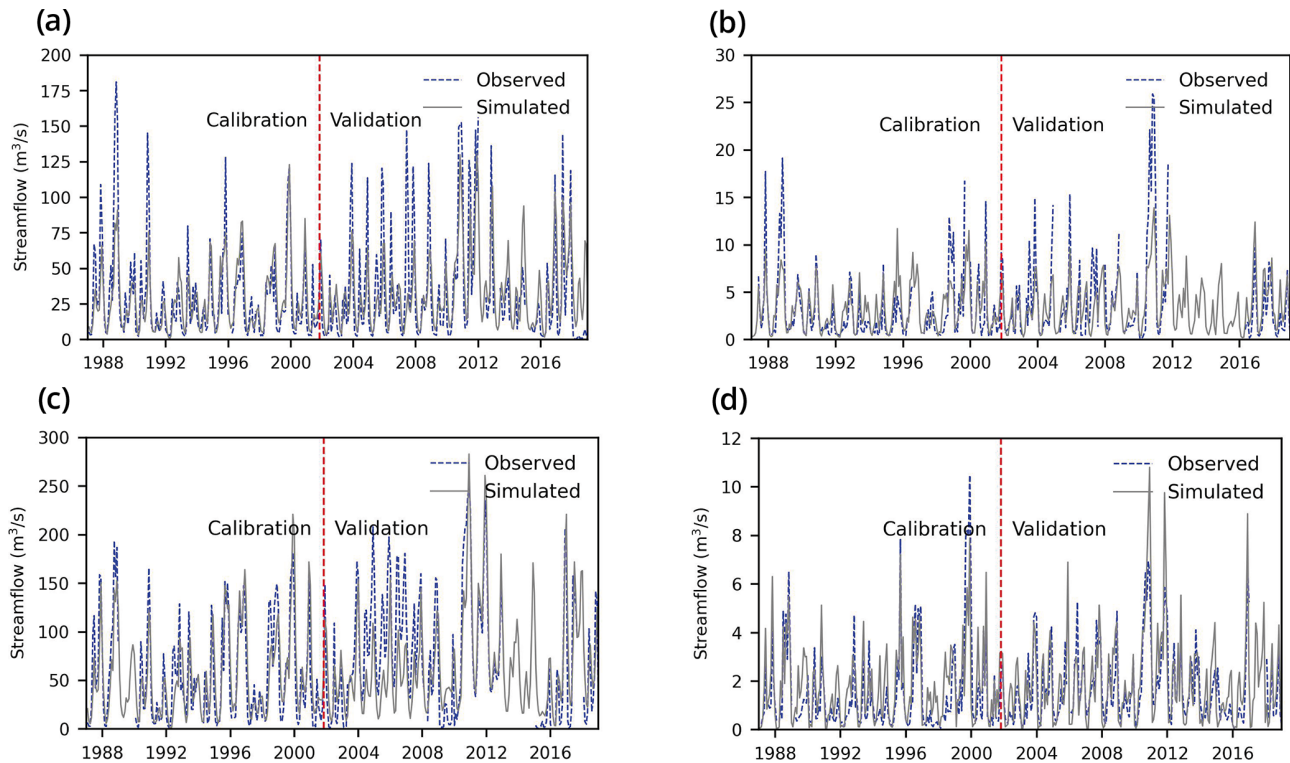


Figure 3. Monthly calibration and validation for streamflow at (a) Puente Salguero, (b) Puente Carretera, (c) Puente Canoas, and (d) Canaclaro.

Table 6. Agricultural and hydrological droughts during the period of analysis.

Event	Agricultural droughts		Hydrological droughts	
	Date	Duration [months]	Date	Duration [months]
I	May 1991–Jun 1992	13	Apr 1991–May 1992	14
II	Jun 1997–Apr 1998	11	Apr 1997–Feb 1998	11
III	Jun 2001–Aug 2001	3	May 2001–Jun 2001	2
IV	Oct 2009–Jan 2010	4	Sep 2009–Nov 2009	3
V	Jun 2014–Aug 2014	3	Jun 2014–Jul 2014	2
VI	May 2015–Jul 2016	15	Apr 2015–Apr 2016	13

percolation (111 mm); and at the fifth level, according to sediment yield (101 t ha^{-1}). The left branch accounts for 7 out of the tree's 12 leaves. Regarding the right branch, splitting was done according to evapotranspiration (729 mm) and the curve number (67) at the third level and according to the water yield (352 mm) at the last level. In the following, we describe agricultural drought MVRT terminal groups.

Leaf *a* clusters seven subbasins in the north part of the basin. In this area, actual evapotranspiration and potential evapotranspiration were above the basin average, while precipitation was below average (Fig. 4c, b, and a, respectively). Figure 8a shows that these subbasins experienced the highest number of months in extreme agricultural drought and a median of 15 months in severe agricultural drought. Leaf *b*

clusters two subbasins in the western part of the basin. In this leaf, there are no months in the extreme drought category. The median of months in the moderate and severe agricultural drought categories is 10 months, one of the lowest among the terminal groups (Fig. 8b).

Leaves *c* and *d* cluster 24 and 19 subbasins, respectively. Leaf *c* groups subbasins located in the upper part of the river course and the basin east. Precipitation was slightly below the basin average in the subbasins located in the north and close to the average in subbasins in the east (Fig. 4a). Leaf *d* groups subbasins located in the upper course of the river and in the basin's western part. The actual evapotranspiration threshold to split leaves *c* and *d* is 1064 mm, a value above the basin average (Fig. 4c). For subbasins with ac-

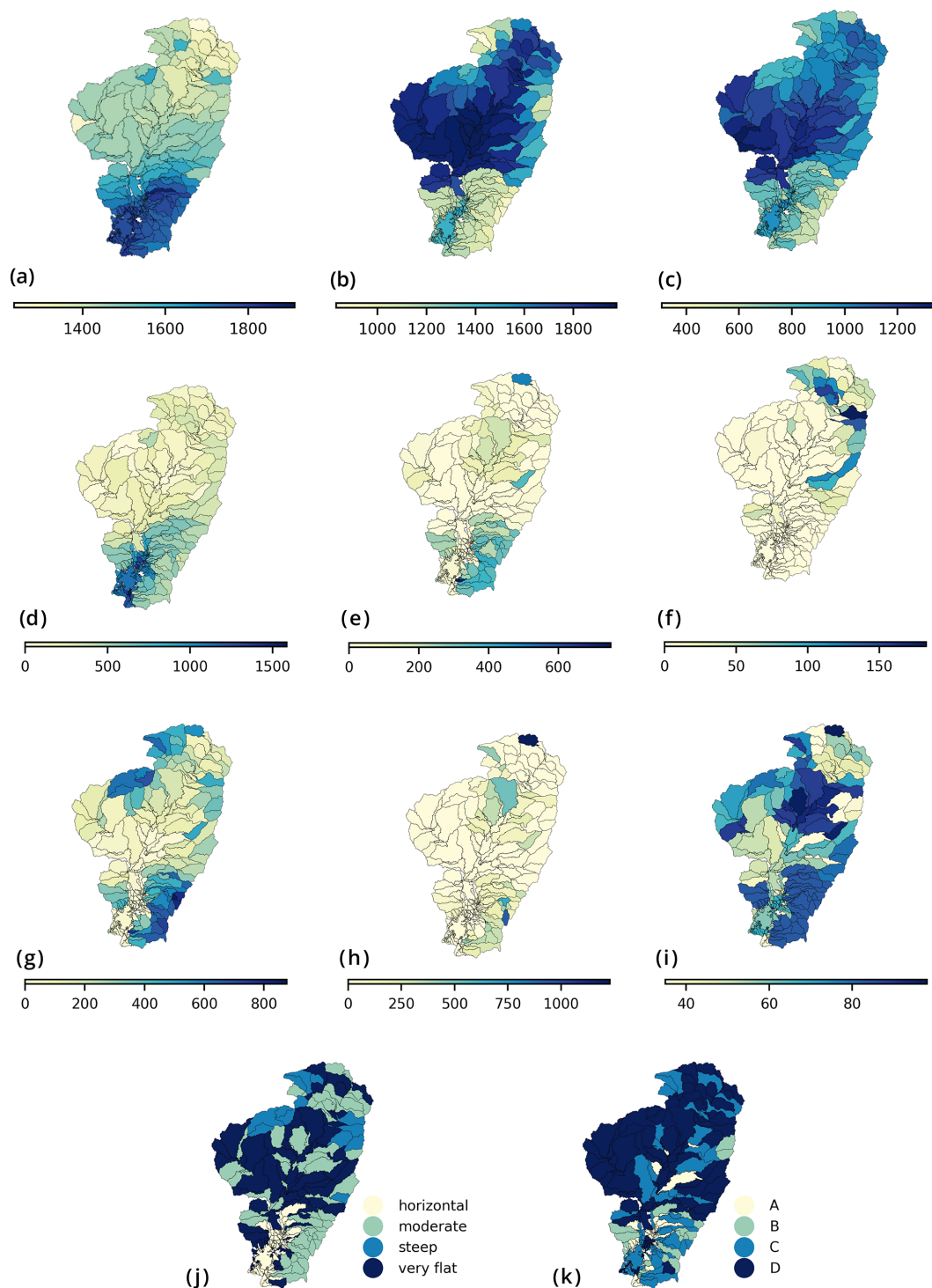


Figure 4. Average value of hydroclimatic parameters during the simulation period at each subbasin: **(a)** precipitation (in mm), **(b)** potential evapotranspiration (in mm), **(c)** actual evapotranspiration (in mm), **(d)** percolation (in mm), **(e)** surface runoff (in mm), **(f)** groundwater contribution to streamflow (in mm), **(g)** water yield (in mm), **(h)** sediment yield (in $t\ ha^{-1}$), **(i)** curve number, **(j)** slope, and **(k)** soil type. The soil hydrologic groups A, B, C, and D refer to the soil’s infiltration characteristics.

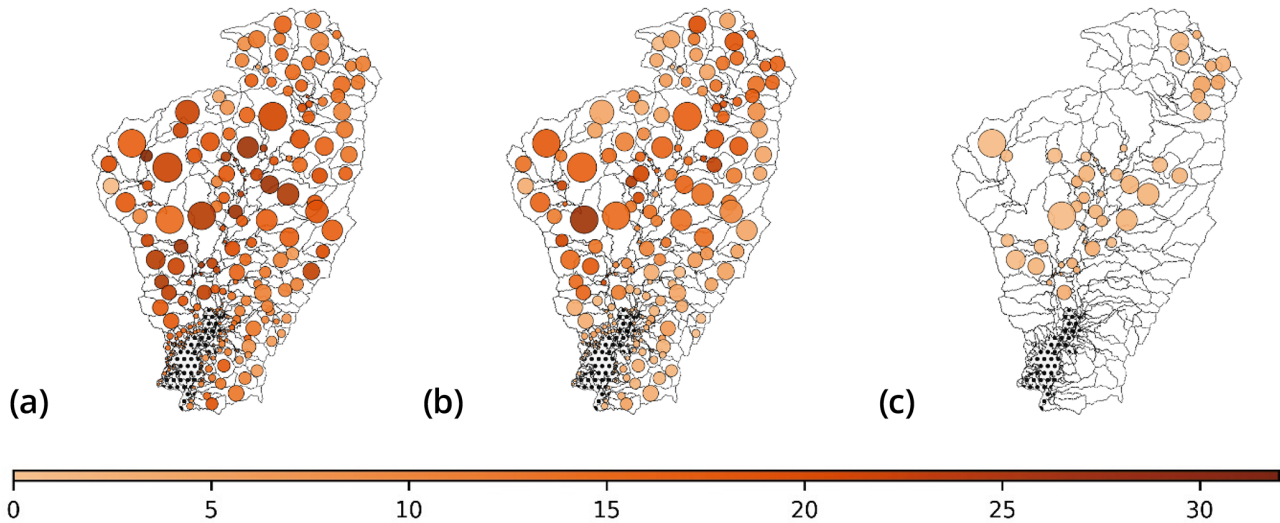


Figure 5. Months in each agricultural drought category: (a) moderate, (b) severe, and (c) extreme. SMDI was not calculated in the wetland subbasins (i.e. hatched area).

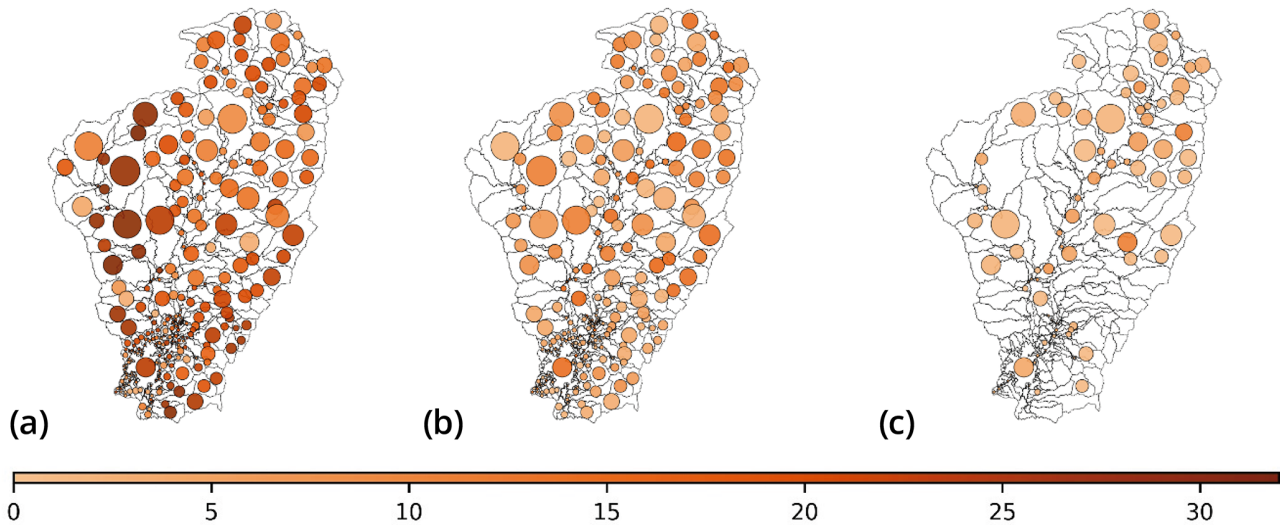


Figure 6. Months in each hydrological drought category: (a) moderate, (b) severe, and (c) extreme.

tual evapotranspiration below the threshold, leaf *c*, the median of months in the severe drought category is below 10 (Fig. 8c). For subbasins with actual evapotranspiration above the threshold, leaf *d*, the median of months in the severe drought category is 16, one of the highest among the terminal groups (Fig. 8d).

Leaves *e*, *f*, and *g* cluster 24, 6, and 12 subbasins, respectively. Subbasins are located in the river valley and the basin's western part. In these subbasins, precipitation was below the basin average (Fig. 4a), and actual evapotranspiration was above the average (Fig. 4c). The percolation threshold to split leaves *e* and *f* from leaf *g* is 111 mm, a value considerably below the basin average (Fig. 4d). At the fifth level of split, the sediment yield threshold to split leaves *e*

and *f* is 101 t ha^{-1} , a value close to the average in the basin (Fig. 4h). Figure 8e, f, and g show that subbasins clustered in these leaves are prone to agricultural droughts. The median of months in the moderate drought category was above 20 months, the severe category was above 10 months, and the three leaves exhibited months in the extreme drought category.

Leaves *h*, *i*, and *j* cluster 26, 52, and 56 subbasins, respectively. Subbasins are mainly located in the wetland surroundings, La Serranía (leaf *i*), and some outliers are located in the basin's north (leaves *h* and *j*). Percolation in leaves *h*, *i*, and *j* was close to the basin average (Fig. 4d). Actual evapotranspiration in terminal groups *h* and *i* was relatively close to the basin average (Fig. 4c). The water yield threshold to

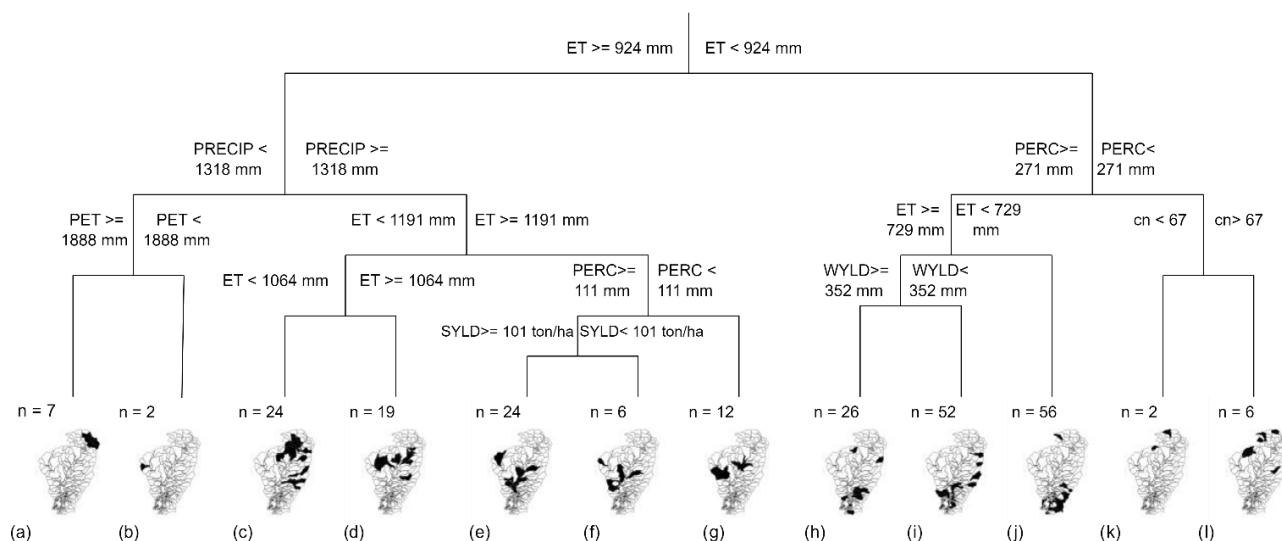


Figure 7. MVRT of hydroclimatic drivers of agricultural droughts at the Cesar River basin and spatial distribution of the subbasins clustered at each leaf. Tree leaves are named from *a* to *l*, and *n* indicates the number of subbasins clustered at each leaf. The wetland subbasins are not included in the analysis for agricultural drought.

split clusters *h* and *i* is 352 mm. Overall, subbasins clustered at leaves *h*, *i*, and *j* presented low susceptibility to severe and extreme agricultural drought conditions. The median of months in the moderate drought category was slightly higher than 10; the median for months in the severe category was the lowest for the study area and showed no months in the extreme drought category (Fig. 8h, i, and j).

Leaves *k* and *l* cluster two and six subbasins, respectively. Subbasins are located towards the basin's north, and one outlier is observed in the subbasin east (leaf *l*). In these subbasins, percolation was lower than 271 mm, a value relatively low compared to other basin areas (Fig. 4d). In leaf *k*, the curve number was lower than 67, while in leaf *l*, it was higher. In leaf *k*, the median of months for the moderate category is 10, and for the severe category, it is 14. In leaf *l*, the median of months in the moderate category is above 10, and the subbasins experienced some months in severe drought. Leaves *k* and *l* show no months in the extreme drought category (Fig. 8k and l).

3.4.2 Drivers of hydrological drought

Figure 9 presents the hydrological drought MVRT, the number of subbasins clustered at each terminal group (variable “*n*”), and the spatial distribution of these subbasins. The tree consists of four levels of split and eight leaves. The minimum value of the cross-validation error ($CVRE = 0.67$) was used to select the tree size. The relative error of the MVRT was 0.52, and the EV was 0.48. Figure 10 presents the tree's numerical output: namely, the number of months for each drought category. This information allowed us to identify the clusters of subbasins prone to hydrological droughts.

The MVRT demonstrated that precipitation was a primary driver of hydrological drought; it appeared two times at different levels of split. The subbasins were separated at the first split level according to precipitation (1632 mm). At the second split level, precipitation (1398 mm) was used as the left branch of the tree, and water yield was used as the right branch (29 mm). The left branch was then further divided according to percolation (153 mm) at the third level and according to curve number (51) at the fourth level. At the third level, the right branch was split according to evapotranspiration (833 mm) and surface runoff (0.5 mm). The MVRT terminal groups were then examined in detail.

Leaf *a* clusters 28 subbasins in the upper basin and one outlier located in the western part of the subbasin (Fig. 9a). In these subbasins, precipitation was considerably below the basin average (Fig. 4a). Figure 10a shows that the subbasins in this terminal group repeatedly experienced moderate, severe, and extreme hydrological drought.

Leaves *b* and *c* cluster 37 and 13 subbasins, respectively. Subbasins clustered at leaf *b* are relatively distant; most are towards the eastern part of the basin, and the rest are in the north and west of the basin. Subbasins in leaf *c* are located in the river's middle course towards the western part of the basin and some outliers in the north. Precipitation and percolation were slightly above the basin average in subbasins clustered at leaves *b* and *c* (Fig. 4a and d). The curve number threshold to split leaves *c* and *d* is 51. Subbasins with a curve number above the threshold, leaf *b*, experience months in extreme drought and present one of the highest median of months for severe drought (Fig. 10b). For subbasins with curve number below the threshold, leaf *c*, the median of

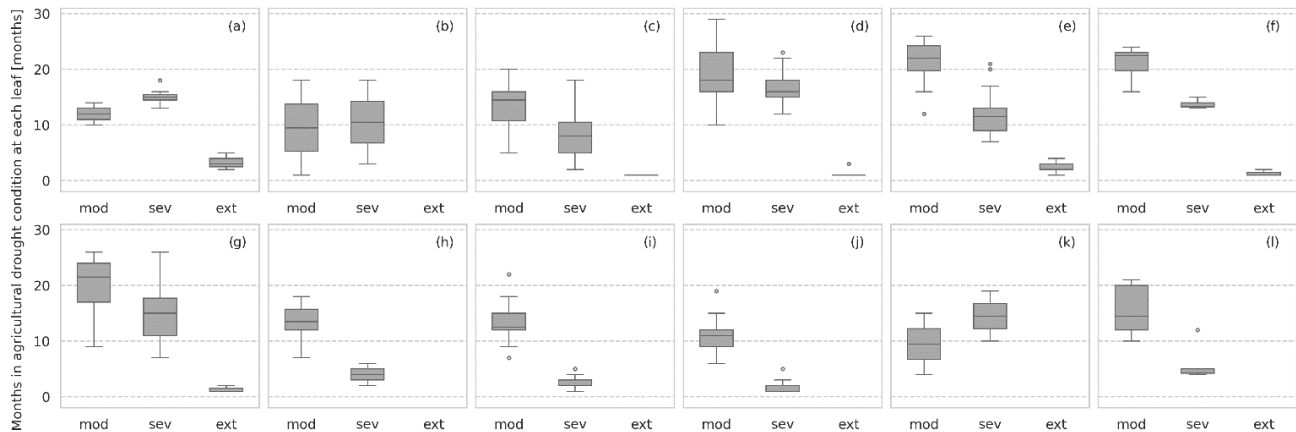


Figure 8. Number of months in agricultural drought categories (moderate, severe, extreme) at each leaf. Tree leaves are named from *a* to *l*.

months at moderate drought is almost 20 and experienced months at severe and extreme category (Fig. 10c).

Leaf *d* clusters 29 subbasins in the river's middle course and the basin's eastern part. Figure 10d indicates that in this terminal group, the subbasins experienced fewer months in the severe and extreme drought categories than the other clusters in the tree's left branch; however, subbasins experienced one of the highest medians of months at moderate drought.

In leaves, *e* ($n = 72$) and *f* ($n = 23$), precipitation exceeded the basin average and water yield was considerably high in the subbasins in La Serranía del Perijá (Fig. 4a and g). The actual evapotranspiration threshold to split leaves *e* and *f* is 833 mm, a value below the basin average (Fig. 4c). Both terminal groups describe moderate exposure to hydrological drought. At leaf *e*, the median of months in the severe and extreme drought categories is below 10, while the median of months in the moderate drought category is 20 (Fig. 10e). The hydrological drought exposure of the subbasins clustered at leaf *f* is also mild. In these subbasins, actual evapotranspiration is above the threshold and close to the basin average. These subbasins present the lowest median of months for all drought categories (Fig. 10f). Notably, the Zapatosá marsh and upstream subbasins are clustered in this terminal group (Fig. 9f).

Leaves *g* and *h* cluster 71 and 40 subbasins, respectively. Subbasins clustered at these leaves are located upstream of the Zapatosá marsh. The surface runoff threshold to split the leaves *g* and *h* is 0.5 mm. Figure 10g shows that the subbasins grouped at leaf *g* present the low susceptibility to hydrological drought. The median of months for all categories is the lowest in the basin. In leaf *h*, the surface runoff was lower than 0.5 mm. In these subbasins, the medians of months in the severe and extreme categories are relatively low, while the median of months in the moderate category is 18 (Fig. 10h).

4 Discussion

4.1 Hydroclimatic drivers of agricultural drought

The left branch of the MVRT clusters the subbasins susceptible to severe agricultural drought (Fig. 8a, d, e, f, and g). Conversely, the right branch of the MVRT clusters the subbasins experiencing moderate agricultural drought severity. The subbasins in leaves *h*, *i*, and *j* predominately experienced months in the moderate drought category (Fig. 8h, i, and j).

Interestingly, agricultural drought severity in leaves *a*, *e*, *f*, and *g* was comparable but governed by different parameters. For instance, leaf *a* presented the highest median of months for severe and extreme agricultural drought (Fig. 8a). The drought drivers in this terminal group, namely precipitation and potential evapotranspiration, indicate that agricultural drought results from an imbalance between the soil moisture supply (i.e. precipitation relatively close to the minimum value at the basin) and soil moisture demand (i.e. moderately high potential evapotranspiration). Leaves *b*, *c*, and *d* corroborate the significant influence of evapotranspiration on agricultural drought severity. A comparison of clusters *a* and *b* and *c* and *d* indicates that the leaves with higher evapotranspiration are more prone to experiencing severe drought. It is interesting to notice that in clusters *c* and *d*, the actual evapotranspiration threshold causes a notable difference in drought severity. While leaf *c* clustering subbasins with actual evapotranspiration below 1064 mm presents the lowest median of months at severe category at the left branch of the tree, leaf *d* shows the highest median of months at the same category in the tree.

This finding aligns well with studies demonstrating that potential evapotranspiration considerably enhances the severity of agricultural droughts in water-limited areas (Teuling et al., 2013; Ding et al., 2021; Manning et al., 2018). According to such studies, potential evapotranspiration influence on agricultural drought severity may be explained

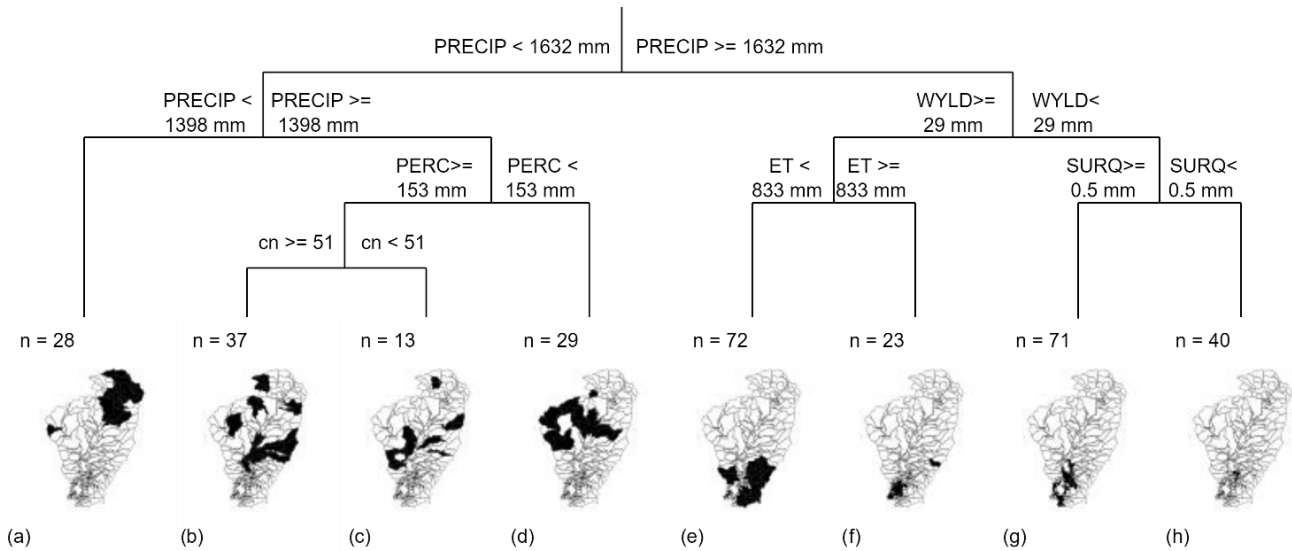


Figure 9. MVRT of hydroclimatic drivers of hydrological drought at the Cesar River basin and spatial distribution of the subbasins clustered at each leaf. Tree leaves are named from *a* to *h*, and *n* indicates the number of subbasins clustered at each leaf.

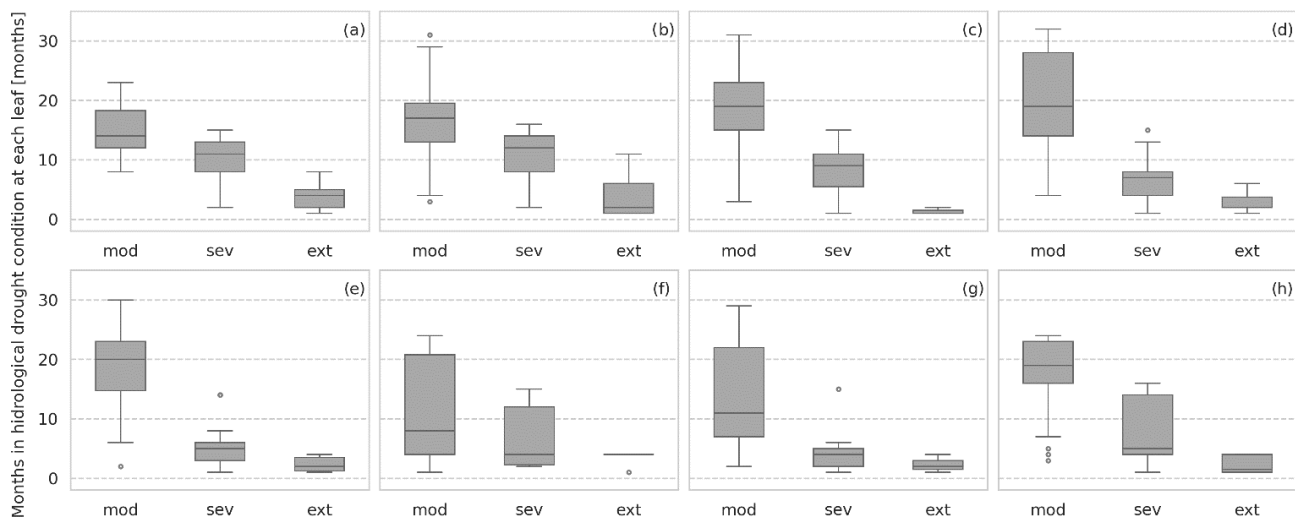


Figure 10. Months in hydrological drought categories (moderate, severe, extreme) at each leaf. Tree leaves are named from *a* to *h*.

by the significant increase in net radiation during droughts, as the lack of rainfall usually concurs with decreased cloud cover.

In contrast, the MVRT outcomes suggest that a lack of precipitation is not a primary driver of agricultural drought in the subbasins clustered at leaves *e*, *f*, and *g*. Particularly, leaf *e* grouped the subbasins that experienced the most severe agricultural drought in the analysis period. The median of months in the moderate drought category was above 20; the severe category was above 10, and subbasin experienced months in extreme category (Fig. 8e). The observed evapotranspiration and percolation thresholds might indicate poor precipitation partitioning and a disturbed water regime that favours water lost by runoff and evapotranspiration. Furthermore, the

sediment yield threshold (notably above the median) may be linked to poor soil structure, thus compromising soil water retention capacity and enhancing drought severity.

The results from leaf *e* show that a higher sediment yield slightly increases the occurrence of extreme droughts (Fig. 8e), as compared to the results from leaf *f*. This agrees with earlier findings concluding that soil degradation enhances agricultural drought characteristics (Masroor et al., 2022; Trnka et al., 2016; Santra and Santra Mitra, 2020). Further, our results are consistent with previous studies that indicate the incidence of droughts is caused not only by extreme weather events but also by the inefficient soil–water management associated with land and soil degradation (Cornelis et al., 2019; Wildemeersch et al., 2015).

The right branch of the tree provides valuable information on the hydroclimatic parameters that reduce the severity of agricultural droughts. Moderate drought susceptibility in leaves *h*, *i*, and *j* is linked to relatively low evapotranspiration thresholds; accordingly, it may be asserted that evapotranspiration-controlling measures (e.g. surface cover, crop rotation, agroforestry, intercropping) are relevant interventions for building resistance to agricultural drought. At terminal groups *h* and *i*, water yield was found to influence the severity of agricultural drought. Notably, the subbasins at leaf *i* were slightly more resistant to drought (Fig. 8i); this indicates that measures aimed at increasing the subbasins' water storage capacity (e.g. rainwater and floodwater harvesting techniques) are suitable interventions to reduce the severity of agricultural drought.

Some of the subbasins grouped at leaf *i* showed high exposure to hydrological drought (Fig. 10b and c). Contrasting exposure to agricultural and hydrological droughts suggests that the water retention capacity in these subbasins reduces the severity of agricultural drought events but limits the contribution of surface runoff, lateral flow, and groundwater to the streamflow, thus exacerbating the water deficit and hydrological drought severity. Therefore, drought management interventions require the prior assessment of the potential effects on both types of droughts.

4.2 Hydroclimatic drivers of hydrological droughts

The subbasins clustered on the left branch of the tree were prone to hydrological drought (Fig. 10a, b, c, d). Leaf *a* presented the highest median for months in the severe and extreme hydrological categories. The analysis results confirmed that precipitation deficits caused the severe hydrological drought conditions in the upper part of the basin.

Conversely, the MVRT also showed that in terminal groups *b*, *c*, and *d*, hydrological drought severity was linked to the inefficient partition of precipitation. Selected drivers (precipitation, percolation and curve number representing land use) are widely recognised as predominant drivers of hydrological droughts (Iglesias et al., 2018; Stoelzle et al., 2014; van Lanen et al., 2013; van Loon, 2015). The difference observed between the precipitation and percolation thresholds suggests that a large part of rainwater was lost either by evapotranspiration or surface runoff (or other water abstractions; e.g. human consumption, agriculture). Low percolation values limited the groundwater contribution to the streamflow, enhancing the streamflow deficit during drought periods.

Interestingly, the curve number was selected as a driver of hydrological drought for leaves *b* and *c* (Fig. 9b and c). The subbasins in leaf *b* presented higher curve numbers than those in leaf *c* and higher exposure to hydrological drought. High curve number values are commonly the result of anthropogenic changes in land cover, which modifies evapotranspiration and the division of precipitation into evapotran-

spiration and streamflow. The present selection of the curve number at the third level of split is consistent with previous studies, which established that hydroclimatic parameters and human activities influence hydrological droughts; however, the influence of both drivers is uneven. Results indicate that hydroclimatic parameters are more influential (Saidi et al., 2018; Jehanzaib et al., 2020).

The right branch of the MVRT grouped subbasins with moderate and intermediate exposure to hydrological drought. The hydroclimatic parameters and the thresholds used to define leaves *e* and *f* (precipitation, water yield, and evapotranspiration) demonstrate that in these subbasins, precipitation values compensated for the water abstraction by evapotranspiration. When we compare the severity of the hydrological droughts observed in leaves *e* and *f*, we find that lower evapotranspiration values reduce exposure to severe and extreme hydrological drought but increase the incidence of moderate hydrological drought.

The subbasins in terminal group *g* experienced the lowest median number of months for all hydrological drought categories (Fig. 10g). The water yield threshold indicates good water retention capacity in these subbasins. It can be explained by the proximity of the subbasins to the marsh (which acted as a natural control), the low slope in the area (which reduced streamflow velocity), and the presence of water bodies (which collected and stored runoff during the rainy season). The runoff threshold indicates that part of rainwater reaches the streamflow; nevertheless, the subbasins in cluster *g* have one of the lowest runoff potentials in the basin (Fig. 4e). On the contrary, in these subbasins, percolation is considerably high (Fig. 4d). This seems to confirm that low susceptibility to hydrological droughts is linked to subbasin water retention capacity. The present findings suggest that the water storage capacity of the Zapatos marsh can compensate for the increased evaporation that occurs during drought events, thereby alleviating hydrological drought severity upstream. Our results concur with previous analyses concluding that wetlands (located in different climatic regions) significantly alleviate hydrological drought severity when direct evaporation from the water body does not significantly reduce water storage (Wu et al., 2023).

The hydrological drought conditions in the subbasins clustered at leaf *h* were mild, despite water yield values below 29 mm (Fig. 10h). Negligible surface runoff values indicated that in leaf *h*, rainfall is stored in the soil profile, is lost by evapotranspiration, or percolates in an area of minimal baseflow contribution to streamflow. This limits the amount of water reaching the streamflow and enhances the severity of hydrological droughts, compared to leaf *g*.

4.3 Comparison of the hydroclimatic parameters influencing the severity of agricultural and hydrological droughts

Crucial similarities and differences emerge from contrasting the parameters influencing the severity of droughts and the spatial distribution of the subbasins experiencing severe and mild drought conditions. MVRTs indicate that severe agricultural and hydrological drought conditions occurred in the upper and middle course of the river. Nevertheless, the severe droughts were influenced by different hydroclimatic factors. Severe agricultural drought in the headwater was driven by the interaction between precipitation shortfalls and high potential evapotranspiration (Fig. 7a). Conversely, severe hydrological drought condition was solely driven by limited precipitation. It is worth highlighting that the severe hydrological situation extends from the headwater to the subbasins in the middle course (Fig. 9a).

Downstream, in subbasins located in the middle course, the agricultural and hydrological drought situation was also severe. In this area, drought severity was linked to inadequate rainfall partitioning and an unbalanced water cycle that favours water loss through evapotranspiration and low percolation values (Figs. 7d, e, f, and g and 9b, c, and d). Significantly, agricultural and hydrological droughts in these leaves were more severe than in leaves experiencing precipitation deficits (Figs. 7a and 9a). Results also suggest that poor soil structure enhanced severe agricultural drought conditions (Fig. 7e), and high curve numbers seem to increase hydrological drought severity (Fig. 9b).

MVRTs also showed subbasins experiencing mild agricultural and hydrological drought severity. Overall, these subbasins were located in the southern part of the basin. However, for agricultural drought, a few cases were observed in the north of the basin (Fig. 7h, i, and j). Subbasins presenting mild hydrological drought severity are allocated upstream of the Zapatos marsh (Fig. 9g). Moderate agricultural drought severity was linked to low evapotranspiration losses and the subbasins' capacity to retain water in the soil profile, improving percolation (Fig. 7j). In turn, moderate hydrological drought severity is related to the subbasins' proximity to the marsh (which acted as a natural control reducing the water yield) and surface runoff contributions to the streamflow (Fig. 9g). Remarkably, some of these subbasins also showed mild agricultural drought conditions (Fig. 7i).

4.4 Accuracy of the MVRTs

The high EV (0.81) value indicates the good explanatory power of the tree built for agricultural drought. This confirms that the selected explanatory variables significantly influence the severity of agricultural drought. Nevertheless, two potential disadvantages of the tree are identified. First, clusters *h* and *i* are very similar. Drought severity is alike in these leaves, and the parameters influencing droughts are the same.

This suggests that these two clusters can be merged into one. Second, leaves *b* and *k* cluster only two subbasins. Accordingly, the distribution presented in the boxplots must be interpreted cautiously. Neither of these disadvantages compromises the study's main findings; however, further analysis is recommended to determine the size of the tree (number of clusters) that better fits the assessment of the hydroclimatic drivers of droughts.

Conversely, the explanatory power of the tree built for hydrological drought is not very high ($EV = 0.48$). This may be related to the inaccurate representation of groundwater contribution to the streamflow. Streams depend significantly on groundwater during droughts to maintain flow; nevertheless, groundwater contribution to the streamflow was not included as a key drought driver in the MVRT, although it was in the list of explanatory variables. It is possible that the model's simplifications for the simulation of groundwater flow and storage did not adequately represent the groundwater contribution to the streamflow (Molina-Navarro et al., 2019). The lack of adequate information about this relevant factor hydrological drought may have compromised the MVRT's accuracy. Unexplained variability may also link to factors that influence hydrological drought but were not considered in the dataset of explanatory variables (e.g. abstractions such as water for irrigation, industry, or human consumption).

5 Conclusions

In this study, a machine learning technique, namely multivariate regression tree (MVRT), was applied. The main aim was to build an "explanatory AI" model to explicitly identify relationships between a subbasin's hydroclimatic characteristics (i.e. explanatory variables) and the severity categories of agricultural and hydrological drought (i.e. response variables). The results show that the machine learning technique identifies drought severity's primary drivers and critical thresholds reasonably well. Notably, the MVRT built for agricultural drought shows a good explanatory power. The MVRT also identifies parameters which can contribute to reducing agricultural and hydrological drought severity.

The outcomes of the MVRT provide valuable information on the hydroclimatic parameters influencing the drought-generating process in the Cesar River basin. MVRTs indicate that severe agricultural and hydrological drought conditions observed in the upper and middle course of the river are influenced by different hydroclimatic factors. The interaction between precipitation shortfalls and high potential evapotranspiration drives severe agricultural drought in the headwater. Conversely, severe hydrological drought condition is mostly caused by limited precipitation. In subbasins in the middle course, drought severity is linked to inadequate rainfall partitioning and an unbalanced water cycle, favouring water loss through evapotranspiration and low percolation values. Notably, results suggest that poor soil structure enhances se-

vere agricultural drought conditions, and high curve numbers seem to increase hydrological drought severity. In the southern region, subbasins experience moderate agricultural and hydrological drought severity. Mild agricultural drought is linked to low evapotranspiration losses and subbasins' capacity to retain water in the soil profile, improving percolation. In turn, moderate hydrological drought severity relates to the subbasins' proximity to the marsh (which acted as a natural control reducing the water yield) and surface runoff contributions to the streamflow. The outcomes of this study also demonstrate that the combined effect of parameters with low impact can trigger a drought situation as severe as the one produced by one or two of the most influential parameters. It is worth mentioning that the study outcomes indicate that the slope and the soil type do not influence the severity of agricultural and hydrological droughts in the Cesar River basin.

It can also be concluded that the MVRT (and other machine learning techniques that generate “explainable AI” models based on progressive tree-like data partitioning and simplified models in leaves) is a relevant tool for defining drought management strategies. The tool helps to identify drought-prone areas and design management strategies that contribute to maintaining the hydrological parameters influencing droughts above (or below) the thresholds that trigger severe and extreme drought conditions.

This study is not without limitations. First, we used a simplified approach to modelling a complex phenomenon using SWAT software (e.g. representing the groundwater components that impact hydrological drought conditions). Second, only a single machine learning (ML) technique was employed to build explainable models. Further extensions of this research may address these limitations. For example, candidate ML techniques could include M5 model trees (rather than regression trees), which have shown their effectiveness in solving water-related problems (see Solomatine and Dulal, 2003; Solomatine and Xue, 2004). These result in linear models in tree leaves rather than constants like in regression trees. Additionally, there is still a need to better represent anthropogenic interventions (and other relevant parameters influencing droughts) in the set of explanatory variables (e.g. abstractions such as water for irrigation, industry or human consumption, groundwater pumping).

The issue of combining human and artificial intelligence (and knowledge of physics with machine learning) is currently a point of great interest (see Jiang et al., 2020, on “physics-aware deep learning models”, Moreido et al., 2021, and Bertels and Willems, 2023, on the role of experts in constraining machine-learning and hydrological models). However, the mentioned approaches directly incorporate physical knowledge into ML models, and domain experts still see the resulting models as “black boxes”. This study can be seen as the one that contributes to developing and testing tools to better incorporate “explanatory” ML, leading to models that can be overviewed and analysed by experts and hence have better

potential for inclusion into existing modelling and management practices.

Data availability. The data are available on request.

Author contributions. All authors contributed to the study conception and design. Material preparation, data collection, and analysis were performed by APT. JC developed the hydrological model. The first draft of the manuscript was written by APT, and all authors commented on previous versions of the manuscript. APT, JC, BH, GC, and DS read and approved the final manuscript.

Competing interests. The contact author has declared that none of the authors has any competing interests.

Disclaimer. Publisher's note: Copernicus Publications remains neutral with regard to jurisdictional claims made in the text, published maps, institutional affiliations, or any other geographical representation in this paper. While Copernicus Publications makes every effort to include appropriate place names, the final responsibility lies with the authors.

Acknowledgements. The authors would like to express their gratitude to the Natura Foundation and the project GEF Magdalena-Cauca VIVE for providing the hydrological model of the Cesar River basin.

Financial support. This study was financially supported by the Ministry of Education Colombia, Programa Colombia Científica (grant no. 3597287).

Review statement. This paper was edited by Brunella Bonaccorso and reviewed by Samuel Jonson Sutanto and one anonymous referee.

References

- Abbaspour, K. C., Vaghefi, S. A., and Srinivasan, R.: A Guideline for Successful Calibration and Uncertainty Analysis for Soil and Water Assessment: A Review of Papers from the 2016 International SWAT Conference, Water (Basel), 10, 6, <https://doi.org/10.3390/w10010006>, 2018.
- Arnold, J. G., Moriasi, D. N., Gassman, P. W., Abbaspour, K. C., White, M. J., Srinivasan, R., Santhi, C., Harmel, R. D., Van Griensven, A., Liew, M. W. Van, Kannan, N., Jha, M. K., Harmel, D., Member, A., Van Liew, M. W., and Arnold, J.-F. G.: SWAT: Model Use, Calibration, and validation, Trans ASABE, 55, 1491–1508, 2012.
- ASABE: Guidelines for Calibrating, Validating, and Evaluating Hydrologic and Water Quality (H/WQ) Models,

- American Society of Agricultural and Biological Engineers, <https://doi.org/10.13031/trans.12806>, 2017.
- Bertels, D. and Willems, P.: Physics-informed machine learning method for modelling transport of a conservative pollutant in surface water systems, *J. Hydrol.*, 619, 129354, <https://doi.org/10.1016/j.jhydrol.2023.129354>, 2023.
- Borcard, D., Gillet, F., and Legendre, P.: Cluster analysis, in: *Numerical Ecology with R. Use R!*, Springer, Cham, https://doi.org/10.1007/978-3-319-71404-2_4, 2018.
- Breiman, L.: Random Forests, *Mach. Learn.*, 45, 5–32, <https://doi.org/10.1023/A:1010933404324>, 2001.
- Brunner, M. L., Swain, D. L., Gilleland, E., and Wood, A. W.: Increasing importance of temperature as a contributor to the spatial extent of streamflow drought, *Environ. Res. Lett.*, 16, 2, <https://doi.org/10.1088/1748-9326/abd2f0>, 2021.
- Cannon, A. J.: Köppen versus the computer: comparing Köppen-Geiger and multivariate regression tree climate classifications in terms of climate homogeneity, *Hydrol. Earth Syst. Sci.*, 16, 217–229, <https://doi.org/10.5194/hess-16-217-2012>, 2012.
- Cavus, Y. and Aksoy, H.: Critical drought severity/intensity-duration-frequency curves based on precipitation deficit, *J. Hydrol.*, 584, 124312, <https://doi.org/10.1016/j.jhydrol.2019.124312>, 2020.
- Clement, V., Rigaud, K. K., de Sherbinin, A., Jones, B., Adamo, S., Schewe, J., Sadiq, N., and Shababat, E.: Groundswell Part 2: Acting on Internal Climate Migration, The World Bank, Washington D.C., 2021.
- Cornelis, W., Waweru, G., and Araya, T.: Building Resilience Against Drought and Floods: The Soil-Water Management Perspective, in: *Sustainable Agriculture Reviews 29. Sustainable Agriculture Reviews*, vol. 29, edited by: Lal, R. and Francaviglia, R., Springer, Cham, https://doi.org/10.1007/978-3-030-26265-5_6, 2019.
- De'ath, G.: Multivariate Regression Trees: A New Technique for Modeling Species-Environment Relationships, *Ecology*, 83, 1105–1117, 2002.
- De'ath, G.: mvpart: Multivariate partitioning, R package version 1.2-4, <https://www.r-project.org/nosvn/pandoc/devtools.html> (last access: 8 December 2023), 2006.
- Destouni, G. and Verrot, L.: Screening long-term variability and change of soil moisture in a changing climate, *J. Hydrol.*, 516, 131–139, <https://doi.org/10.1016/J.JHYDROL.2014.01.059>, 2014.
- Ding, Y., Gong, X., Xing, Z., Cai, H., Zhou, Z., Zhang, D., Sun, P., and Shi, H.: Attribution of meteorological, hydrological and agricultural drought propagation in different climatic regions of China, *Agric. Water Manag.*, 255, 106996, <https://doi.org/10.1016/J.AGWAT.2021.106996>, 2021.
- GEF, BID, and Fundación Natura: Proyecto manejo sostenible y conservacion de la biodiversidad en la cuenca del Río Magdalena, Modelo hidrológico refinado 1 en la cuenca del Río Cesar, GEF, BID, and Fundación Natura, 2020.
- GEF, BID, and Fundación Natura: Proyecto manejo sostenible y conservacion de la biodiversidad en la cuenca del Río Magdalena, Modelo hidrológico refinado 2 en la cuenca del Río Cesar, GEF, BID, and Fundación Natura, 2021.
- Hao, Z. and Singh, V. P.: Drought characterization from a multivariate perspective: A review, *J. Hydrol.*, 527, 668–678, <https://doi.org/10.1016/J.JHYDROL.2015.05.031>, 2015.
- Hao, Z., Hao, F., Xia, Y., Feng, S., Sun, C., Zhang, X., Fu, Y., Hao, Y., Zhang, Y., and Meng, Y.: Compound droughts and hot extremes: Characteristics, drivers, changes, and impacts, *Earth Sci. Rev.*, 235, 104241, <https://doi.org/10.1016/J.EARSCIREV.2022.104241>, 2022.
- Iglesias, A., Assimakopoulos, D., and Van Lanen, H. A. J. (Eds.): *Drought: science and policy*, John Wiley & Sons, Incorporated, 1–27 pp., <https://doi.org/10.1002/9781119017073.ch1>, 2018.
- Instituto de hidrología, meteorología y estudios ambientales (IDEAM): Estudio Nacional del Agua 2018, Bogotá, 1–452 pp., 2019.
- Jehanzaib, M., Shah, S. A., Yoo, J., and Kim, T. W.: Investigating the impacts of climate change and human activities on hydrological drought using non-stationary approaches, *J. Hydrol.*, 588, 125052, <https://doi.org/10.1016/J.JHYDROL.2020.125052>, 2020.
- Jiang, S., Zheng, Y., and Solomatine, D.: Improving AI System Awareness of Geoscience Knowledge: Symbiotic Integration of Physical Approaches and Deep Learning, *Geophys. Res. Lett.*, 46, e2020GL088229, <https://doi.org/10.1029/2020GL088229>, 2020.
- Keyantash, J. and Dracup, J. A.: The Quantification of Drought: An Evaluation of Drought Indices, *B. Am. Meteorol. Soc.*, 83, 1167–1180, 2002.
- Konapala, G. and Mishra, A.: Quantifying Climate and Catchment Control on Hydrological Drought in the Continental United States, *Water Resour. Res.*, 56, e2018WR024620, <https://doi.org/10.1029/2018WR024620>, 2020.
- Kuhn, M. and Johnson, K.: *Over-Fitting and Model Tuning*, Springer, New York, NY, New York, NY, https://doi.org/10.1007/978-1-4614-6849-3_4, 2013.
- Legendre, P. and Legendre, L.: Cluster analysis, in: *Developments in Environmental Modelling*, vol. 24, 337–424, <https://doi.org/10.1016/B978-0-444-53868-0.50008-3>, 2012.
- Li, J., Wang, Z., Wu, X., and Xu, C.-Y.: Toward Monitoring Short-Term Droughts Using a Novel Daily Scale, Standardized Antecedent Precipitation Evapotranspiration Index, *J. Hydrometeorol.*, 21, 891–908, <https://doi.org/10.1175/JHM-D-19-0298.1>, 2020.
- Lu, J., Carbone, G. J., and Grego, J. M.: Uncertainty and hotspots in 21st century projections of agricultural drought from CMIP5 models, *Sci. Rep.*, 9, 4922, <https://doi.org/10.1038/s41598-019-41196-z>, 2019.
- Manning, C., Widmann, M., Bevacqua, E., van Loon, A. F., Maraun, D., and Vrac, M.: Soil Moisture Drought in Europe: A Compound Event of Precipitation and Potential Evapotranspiration on Multiple Time Scales, *J. Hydrometeorol.*, 19, 1255–1271, <https://doi.org/10.1175/JHM-D-18-0017.1>, 2018.
- Margariti, J., Rangelcroat, S., Parry, S., Wendt, D. E., and Van Loon, A. F.: Anthropogenic activities alter drought termination, *Elementa: Science of the Anthropocene* 1, 727, <https://doi.org/10.1525/elementa.365>, 2019.
- Masroor, M., Sajjad, H., Rehman, S., Singh, R., Hibjur Rahaman, M., Sahana, M., Ahmed, R., and Avtar, R.: Analysing the relationship between drought and soil erosion using vegetation health index and RUSLE models in Godavari middle sub-basin, India, *Geosci. Front.*, 13, 101312, <https://doi.org/10.1016/J.GSF.2021.101312>, 2022.

- Mastrotheodoros, T., Pappas, C., Molnar, P., Burlando, P., Manoli, G., Parajka, J., Rigon, R., Szeles, B., Bottazzi, M., Hadjidoukas, P., and Faticchi, S.: More green and less blue water in the Alps during warmer summers, *Nat. Climate Change*, 10, 155–161, <https://doi.org/10.1038/s41558-019-0676-5>, 2020.
- Mckee, T. B., Doesken, N. J., and Kleist, J.: The relationship of drought frequency and duration to time scales, 8th Conference on Applied Climatology, Anaheim, 17–22 January 1993, 179–184, 1993.
- Ministerio de Ambiente y Desarrollo Sostenible (Colombia): Plan Integral de Gestión del Cambio Climático Territorial del Departamento de Cesar, Bogotá, 2015.
- Modarres, R.: Streamflow drought time series forecasting, *Stoch. Env. Res. Risk A.*, 21, 223–233, <https://doi.org/10.1007/s00477-006-0058-1>, 2007.
- Molina-Navarro, E., Bailey, R. T., Andersen, H. E., Thodsen, H., Nielsen, A., Park, S., Jensen, J. S., Jensen, J. B., and Trolle, D.: Comparison of abstraction scenarios simulated by SWAT and SWAT-MODFLOW, *Hydrol. Sci. J.*, 64, 434–454, <https://doi.org/10.1080/02626667.2019.1590583>, 2019.
- Molnar, C.: Interpretable Machine Learning: A Guide for Making Black Box Models Explainable, 2nd edn., <https://christophm.github.io/interpretable-ml-book> (last access: 8 December 2023), 2022.
- Moreido, V., Gartsman, B., Solomatine, D. P., and Suchilina, Z.: How Well Can Machine Learning Models Perform without Hydrologists? Application of Rational Feature Selection to Improve Hydrological Forecasting, *Water*, 13, 13, 1696, <https://doi.org/10.3390/W13121696>, 2021.
- Moriasi, D. N., Arnold, J. G., Van Liew, M. W., Bingner, R. L., Harmel, R. D., and Veith, T. L.: Model evaluation guidelines for systematic quantification of accuracy in watershed simulations, *Trans. ASABE*, 50, 885–900, <https://doi.org/10.13031/2013.23153>, 2007.
- Narasimhan, B. and Srinivasan, R.: Development and evaluation of Soil Moisture Deficit Index (SMDI) and Evapotranspiration Deficit Index (ETDI) for agricultural drought monitoring, *Agric. Forest Meteorol.*, 133, 69–88, <https://doi.org/10.1016/j.agrformet.2005.07.012>, 2005.
- Neitsch, S. L., Arnold, J. G., Kiniry, J. R., and Williams, J. R.: Soil and Water Assessment Tool Theoretical Documentation Version 2009, Texas Water Resources Institute: College Station, TX, USA, <https://swat.tamu.edu/media/99192/swat2009-theory.pdf> (last access: 3 August 2022), 2011.
- Peña-Gallardo, M., Vicente-Serrano, S. M., Hannaford, J., Lorenzo-Lacruz, J., Svoboda, M., Domínguez-Castro, F., Maneta, M., Tomas-Burguera, M., and Kenawy, A.: Complex influences of meteorological drought time-scales on hydrological droughts in natural basins of the contiguous United States, *J. Hydrol.*, 568, 611–625, <https://doi.org/10.1016/J.JHYDROL.2018.11.026>, 2019.
- Prudhomme, C., Giuntoli, I., Robinson, E. L., Clark, D. B., Arnell, N. W., Dankers, R., Fekete, B. M., Franssen, W., Gerten, D., Gosling, S. N., Hagemann, S., Hannah, D. M., Kim, H., Masaki, Y., Satoh, Y., Stacke, T., Wada, Y., and Wisser, D.: Hydrological droughts in the 21st century, hotspots and uncertainties from a global multimodel ensemble experiment, *P. Natl. Acad. Sci. USA*, 111, 3262–3267, <https://doi.org/10.1073/pnas.1222473110>, 2014.
- Rangecroft, S., Van Loon, A. F., Maureira, H., Verbist, K., and Hannah, D. M.: An observation-based method to quantify the human influence on hydrological drought: upstream–downstream comparison, *Hydrol. Sci. J.*, 64, 276–287, <https://doi.org/10.1080/02626667.2019.1581365>, 2019.
- Saft, M., Peel, M. C., Western, A. W., and Zhang, L.: Predicting shifts in rainfall-runoff partitioning during multiyear drought: Roles of dry period and catchment characteristics, *Water Resour. Res.*, 52, 9290–9305, <https://doi.org/10.1002/2016WR019525>, 2016.
- Saidi, H., Dresti, C., Manca, D., and Ciampittiello, M.: Quantifying impacts of climate variability and human activities on the streamflow of an Alpine river, *Environ. Earth Sci.*, 77, 1–16, <https://doi.org/10.1007/s12665-018-7870-z>, 2018.
- Santra, A. and Santra Mitra, S.: Space-Time Drought Dynamics and Soil Erosion in Puruliya District of West Bengal, India: A Conceptual Design, *J. Ind. Soc. Remote Sens.*, 48, 1191–1205, <https://doi.org/10.1007/s12524-020-01147-y>, 2020.
- Seneviratne, S. I., Nicholls, N., Easterling, D., Goodess, C. M., Kanae, S., Kossin, Y., Luo, Y., Marengo, J., McInnes, K., Rahimi, M., Reichstein, M., Sorteberg, A., Vera, C., and Zhang, X.: Changes in Climate Extremes and their Impacts on the Natural Physical Environment, in: *Managing the Risks of Extreme Events and Disasters to Advance Climate Change Adaptation*, edited by: Field, C. B., Barros, V., Stocker, T. F., Qin, D., Dokken, D. J., Ebi, K. L., Mastrandrea, M. D., Mach, K. J., Plattner, G.-K., Allen, S. K., Tignor, M., and Midgley P. M., Cambridge University Press, UK, and New York, NY, USA, 109–230, 2012.
- Shah, D., Shah, H. L., Dave, H. M., and Mishra, V.: Contrasting influence of human activities on agricultural and hydrological droughts in India, *Sci. Total Environ.*, 774, 144959, <https://doi.org/10.1016/J.SCITOTENV.2021.144959>, 2021.
- Sheffield, J. and Wood, E. F.: The science of drought, in: *Drought: Past Problems and Future Scenarios*, Taylor & Francis Group, 18–42, 2011a.
- Sheffield, J. and Wood, E. F.: What is drought, in: *Drought: Past Problems and Future Scenarios*, Taylor & Francis Group, 9–15, 2011b.
- Solomatine, D. P. and Dulal, K. N.: Model trees as an alternative to neural networks in rainfall-runoff modelling, *Hydrol. Sci. J.*, 48, 399–411, <https://doi.org/10.1623/HYSJ.48.3.399.45291>, 2003.
- Solomatine, D. P. and Xue, Y.: M5 Model Trees and Neural Networks: Application to Flood Forecasting in the Upper Reach of the Huai River in China, *J. Hydrol. Eng.*, 9, 491–501, [https://doi.org/10.1061/\(asce\)1084-0699\(2004\)9:6\(491\)](https://doi.org/10.1061/(asce)1084-0699(2004)9:6(491)), 2004.
- Stoelzle, M., Stahl, K., Morhard, A., and Weiler, M.: Streamflow sensitivity to drought scenarios in catchments with different geology, *Geophys. Res. Lett.*, 41, 6174–6183, <https://doi.org/10.1002/2014GL061344>, 2014.
- Teuling, A. J., van Loon, A. F., Seneviratne, S. I., Lehner, I., Aubinet, M., Heinesch, B., Bernhofer, C., Grünwald, T., Prasse, H., and Spank, U.: Evapotranspiration amplifies European summer drought, *Geophys. Res. Lett.*, 40, 2071–2075, <https://doi.org/10.1002/GRL.50495>, 2013.
- Tijdeman, E., Barker, L. J., Svoboda, M. D., and Stahl, K.: Natural and human influences on the link between meteorological and hydrological drought indices for a large set of catchments in the

- contiguous United States, *Water Resour. Res.*, 54, 6005–6023, <https://doi.org/10.1029/2017WR022412>, 2018.
- Trnka, M., Semerádová, D., Novotný, I., Dumbrovský, M., Drbal, K., Pavlík, F., Vopravil, J., Štěpánková, P., Vizina, A., Balek, J., Hlavinka, P., Bartošová, L., and Žalud, Z.: Assessing the combined hazards of drought, soil erosion and local flooding on agricultural land: A Czech case study, *Clim. Res.*, 70, 231–249, <https://doi.org/10.3354/cr01421>, 2016.
- United Nations Office for Disaster Risk Reduction: GAR Special Report on Drought 2021, Geneva, 2021.
- Universidad del Atlántico: Plan de ordenamiento del recurso hídrico del Río Cesar Formulacion Final, 1–351 pp., 2014.
- Universidad del Magdalena, CORPAMAG, and CORPOCESAR: Documento síntesis para la declaratoria del complejo cenagoso de la Zapatosa como área protegida, 1–72 pp., 2017.
- USDA: Hydrologic Soil Groups, in: Hydrology National Engineering Handbook, 2007.
- Valiya Veettil, A. and Mishra, A. k.: Multiscale hydrological drought analysis: Role of climate, catchment and morphological variables and associated thresholds, *J. Hydrol.*, 582, 124533, <https://doi.org/10.1016/J.JHYDROL.2019.124533>, 2020.
- Van Lanen, H. A. J., Wanders, N., Tallaksen, L. M., and Van Loon, A. F.: Hydrological drought across the world: impact of climate and physical catchment structure, *Hydrol. Earth Syst. Sci.*, 17, 1715–1732, <https://doi.org/10.5194/hess-17-1715-2013>, 2013.
- Van Loon, A. F.: Hydrological drought explained, *Wiley Interdisciplinary Reviews: Water*, 2, 359–392, <https://doi.org/10.1002/WAT2.1085>, 2015.
- Van Loon, A. F., Van Huijgevoort, M. H. J., and Van Lanen, H. A. J.: Evaluation of drought propagation in an ensemble mean of large-scale hydrological models, *Hydrol. Earth Syst. Sci.*, 16, 4057–4078, <https://doi.org/10.5194/hess-16-4057-2012>, 2012.
- Vicente-Serrano, S. M., López-Moreno, J. I., Beguería, S., Lorenzo-Lacruz, J., Azorin-Molina, C., and Morán-Tejeda, E.: Accurate Computation of a Streamflow Drought Index, *J. Hydrol. Eng.*, 17, 318–332, [https://doi.org/10.1061/\(ASCE\)HE.1943-5584.0000433](https://doi.org/10.1061/(ASCE)HE.1943-5584.0000433), 2011.
- Vicente-Serrano, S. M., Quiring, S. M., Peña-Gallardo, M., Yuan, S., and Domínguez-Castro, F.: A review of environmental droughts: Increased risk under global warming?, *Earth Sci. Rev.*, 201, 102953, <https://doi.org/10.1016/J.EARSCIREV.2019.102953>, 2020.
- Wang, M., Jiang, S., Ren, L., Xu, C. Y., Menzel, L., Yuan, F., Xu, Q., Liu, Y., and Yang, X.: Separating the effects of climate change and human activities on drought propagation via a natural and human-impacted catchment comparison method, *J. Hydrol.*, 603, 126913, <https://doi.org/10.1016/J.JHYDROL.2021.126913>, 2021.
- Wildemeersch, J. C. J., Garba, M., Sabiou, M., Fatondji, D., and Cornelis, W. M.: Agricultural drought trends and mitigation in Tillabéri, Niger, *Soil Sci. Plant Nutr.*, 61, 414–425, <https://doi.org/10.1080/00380768.2014.999642>, 2015.
- WMO and GWP: Handbook of Drought Indicators and Indices, edited by: Svoboda, M. and Fuchs, B. A., Integrated Drought Management Programme (IDMP), Integrated Drought Management Tools and Guidelines Series 2, Geneva, 2016.
- Wu, Y., Sun, J., Blanchette, M., Rousseau, A. N., Xu, Y. J., Hu, B., and Zhang, G.: Wetland mitigation functions on hydrological droughts: From drought characteristics to propagation of meteorological droughts to hydrological droughts, *J. Hydrol.*, 617, 128971, <https://doi.org/10.1016/J.JHYDROL.2022.128971>, 2023.
- Xu, Y., Zhang, X., Wang, X., Hao, Z., Singh, V. P., and Hao, F.: Propagation from meteorological drought to hydrological drought under the impact of human activities: A case study in northern China, *J. Hydrol.*, 579, 124147, <https://doi.org/10.1016/J.JHYDROL.2019.124147>, 2019.
- Zargar, A., Sadiq, R., Naser, B., and Khan, F. I.: A review of drought indices, *Reviews*, 19, 333–349, 2011.
- Zhang, X., Hao, Z., Singh, V. P., Zhang, Y., Feng, S., Xu, Y., and Hao, F.: Drought propagation under global warming: Characteristics, approaches, processes, and controlling factors, *Sci. Total Environ.*, 838, 156021, <https://doi.org/10.1016/J.SCITOTENV.2022.156021>, 2022.