

“SET OF DRAWINGS”

LEIDEN HUMANITIES Campus & Boutique Residences

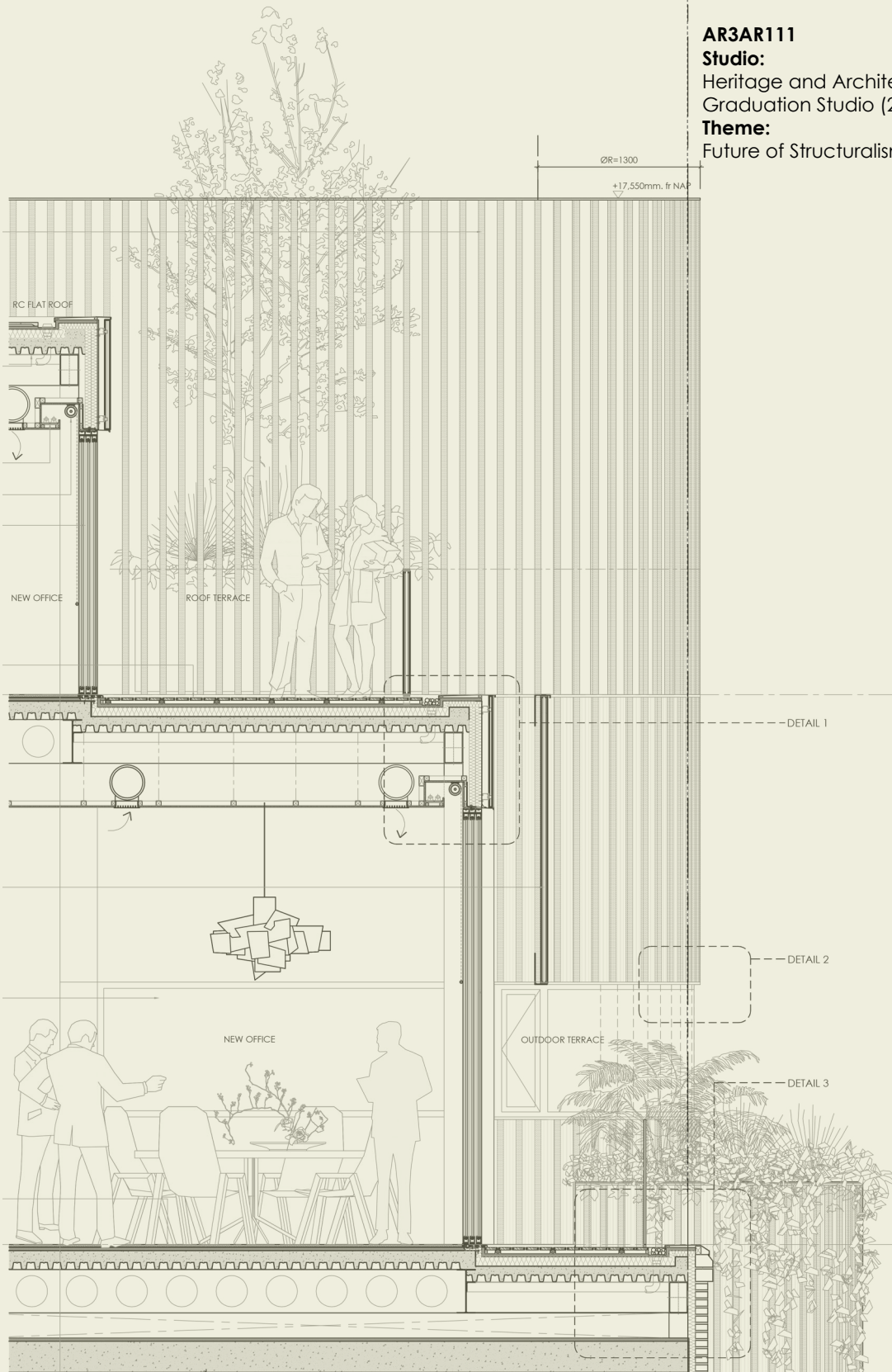
AR3AR111

Studio:

Heritage and Architecture
Graduation Studio (201718 Q1)

Theme:

Future of Structuralism





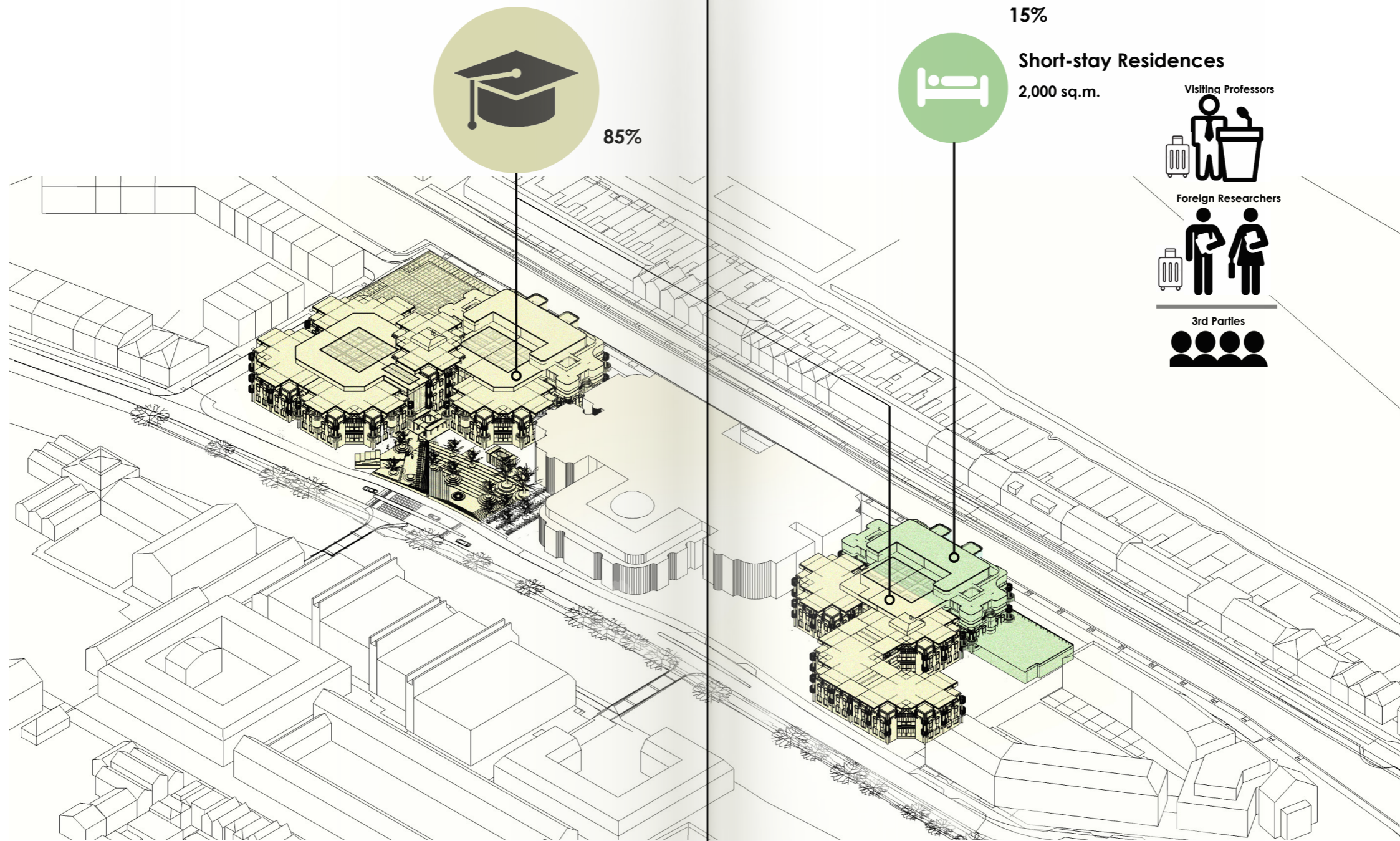
Painting of the first ambition on the redevelopment of Leiden Humanity Campus - W. Taemeyachat, November 2017.

Area Tabulation | New GFA: 19,500 sq.m.

Student's workspace			2000 sqm	10%
Lecture rooms			2100 sqm	11%
	S	30 sqm	18 units	
	M	50sqm	8 units	
	L	85 sqm	3 units	
	XL	400 sqm	3 units	
Library			2200 sqm	11%
Exhibition hall			800 sqm	4%
	Hall 1	150 sqm		
	Hall 2	230sqm		
	Hall 3	420 sqm		
Office			5500 sqm	28%
Book shop			300 sqm	2%
F&B			1550 sqm	8%
Residences 28 Units			2000 sqm	10%
	Studio	25-28 sqm	18 units	
	1 bedroom	38-45 sqm	4 units	
	2 bedrooms	90 sqm	4 units	
	3 bedrooms	180 sqm	2 units	
Circulation			1550 sqm	8%
M&E			850 sqm	4%
Others			650 sqm	3%
			19500 sqm	

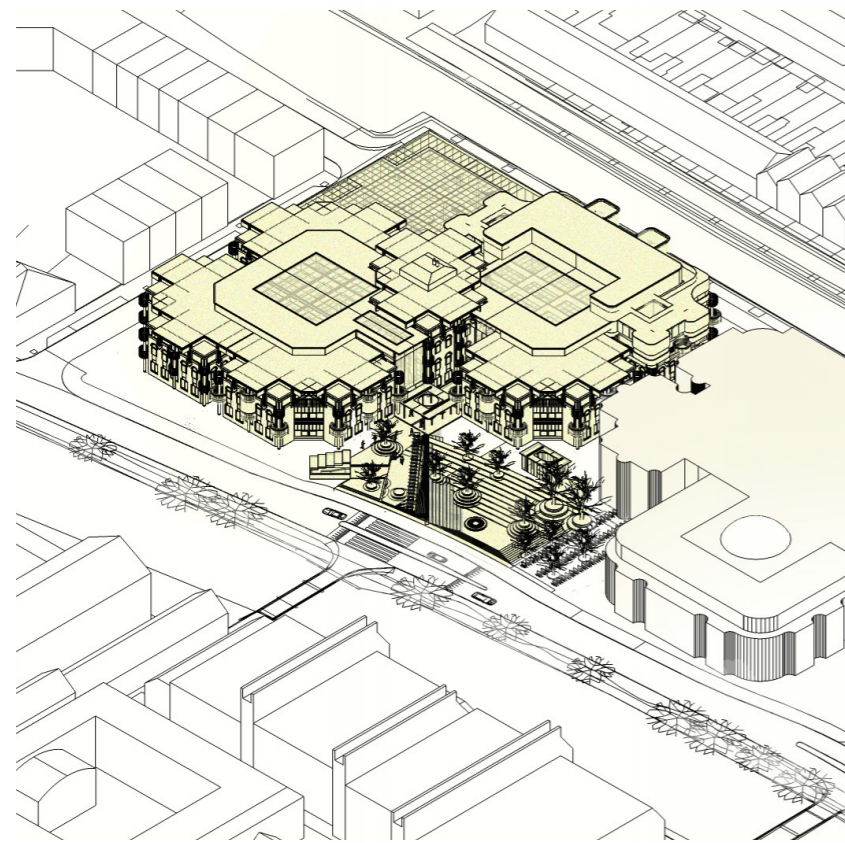


A place to LIVE, WORK and PLAY.
The model represents the architectural ambition of this graduation project - W. Taemeyachat, November 2017

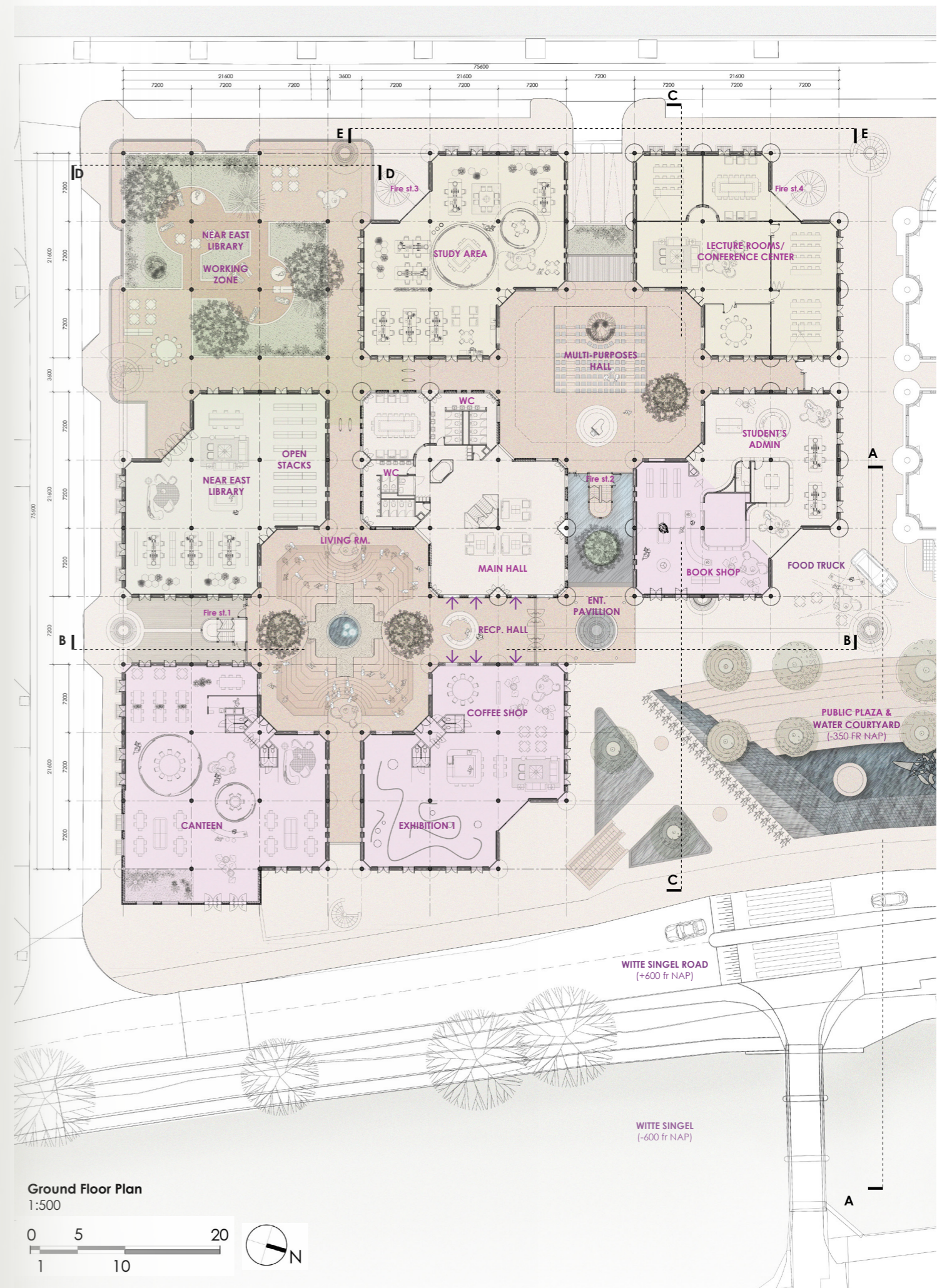


Functional Diagram



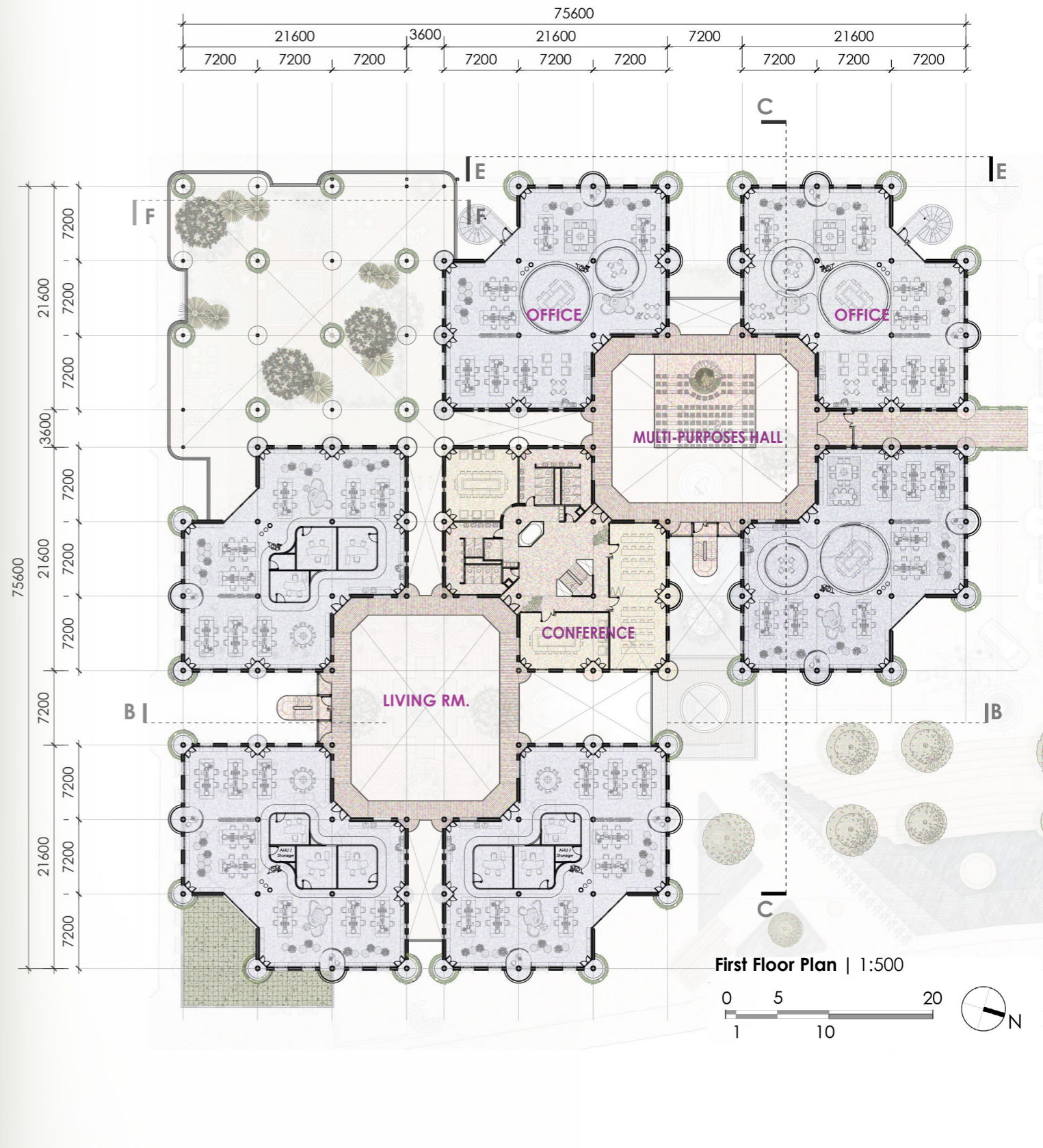
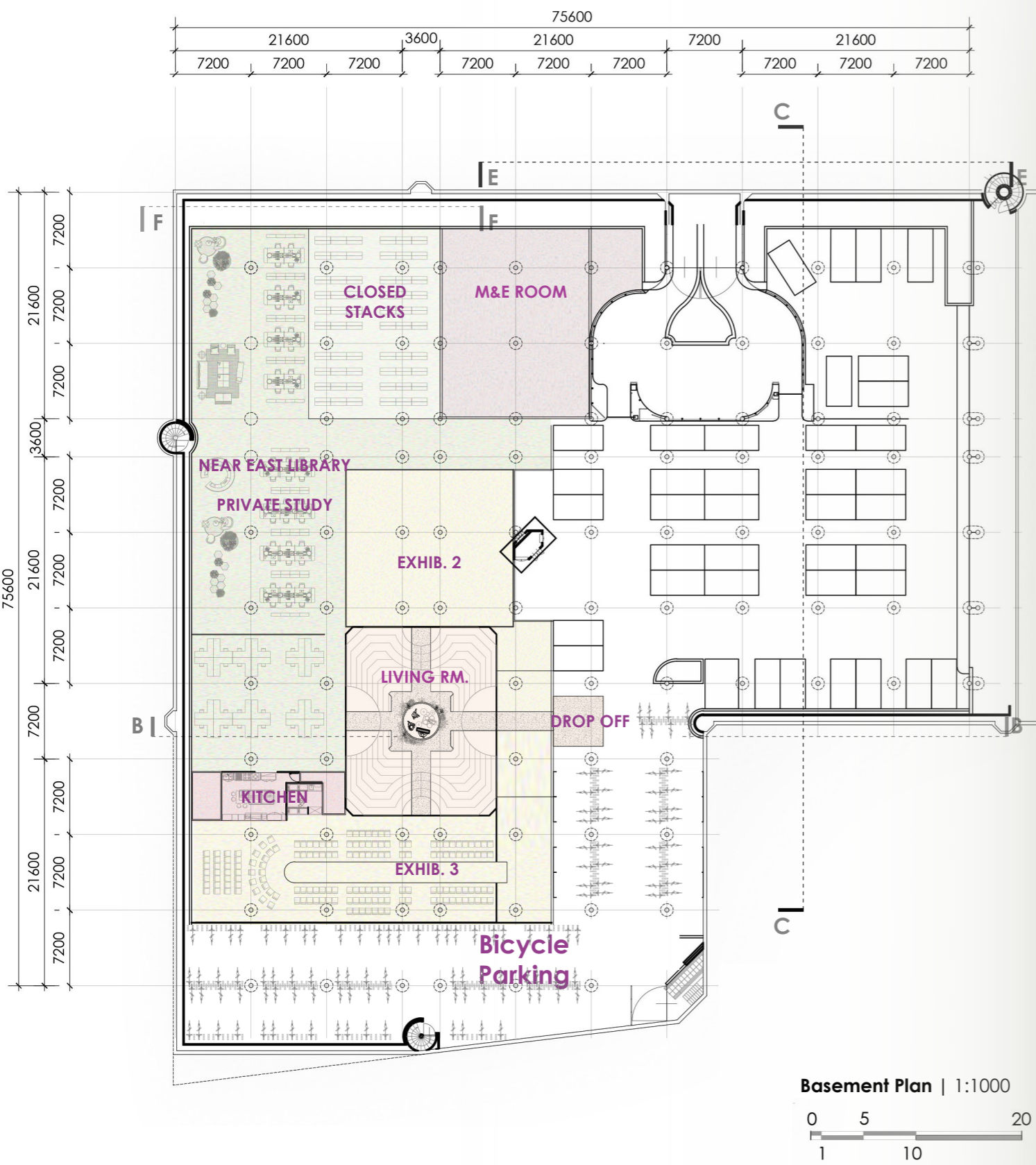


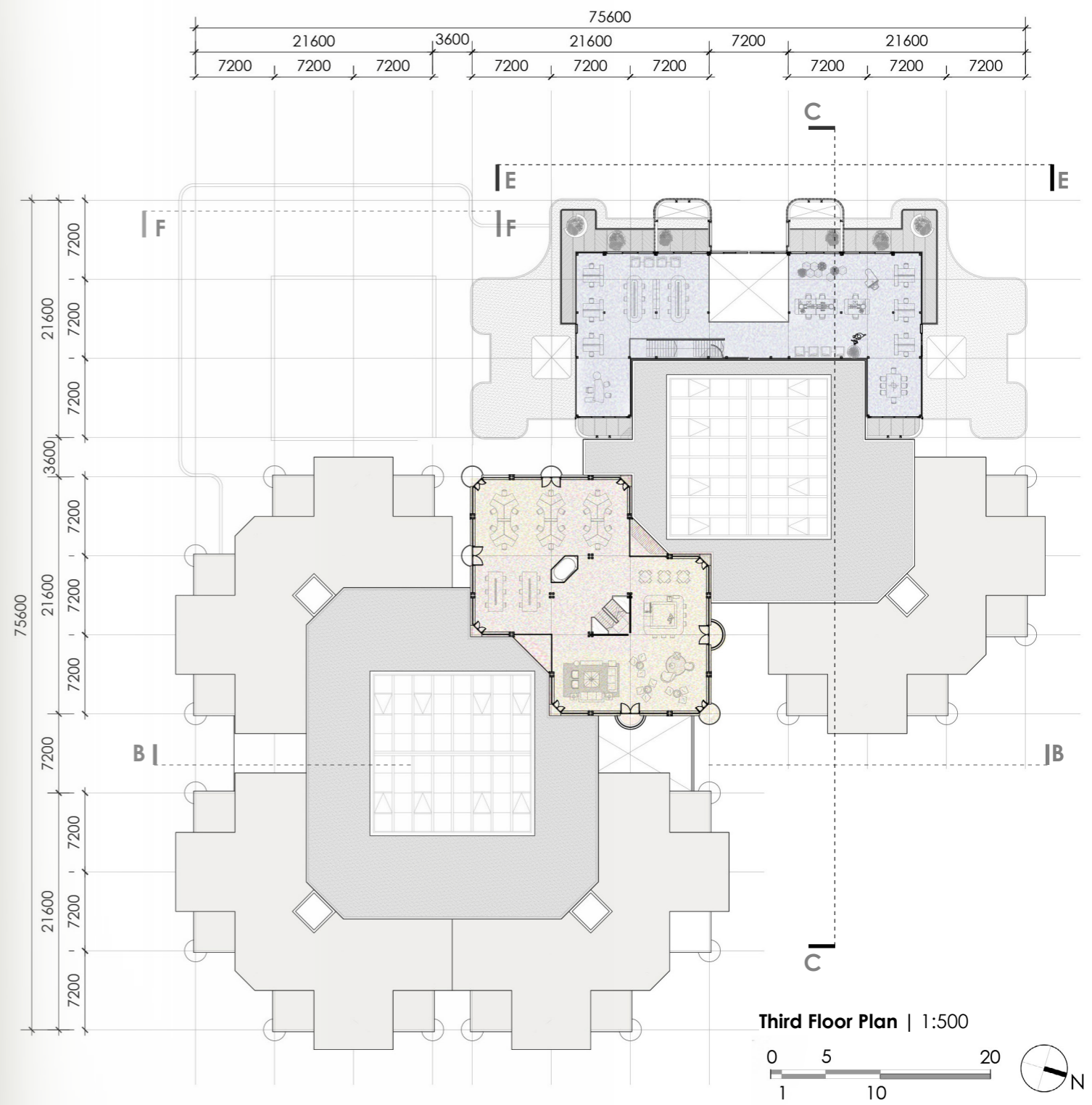
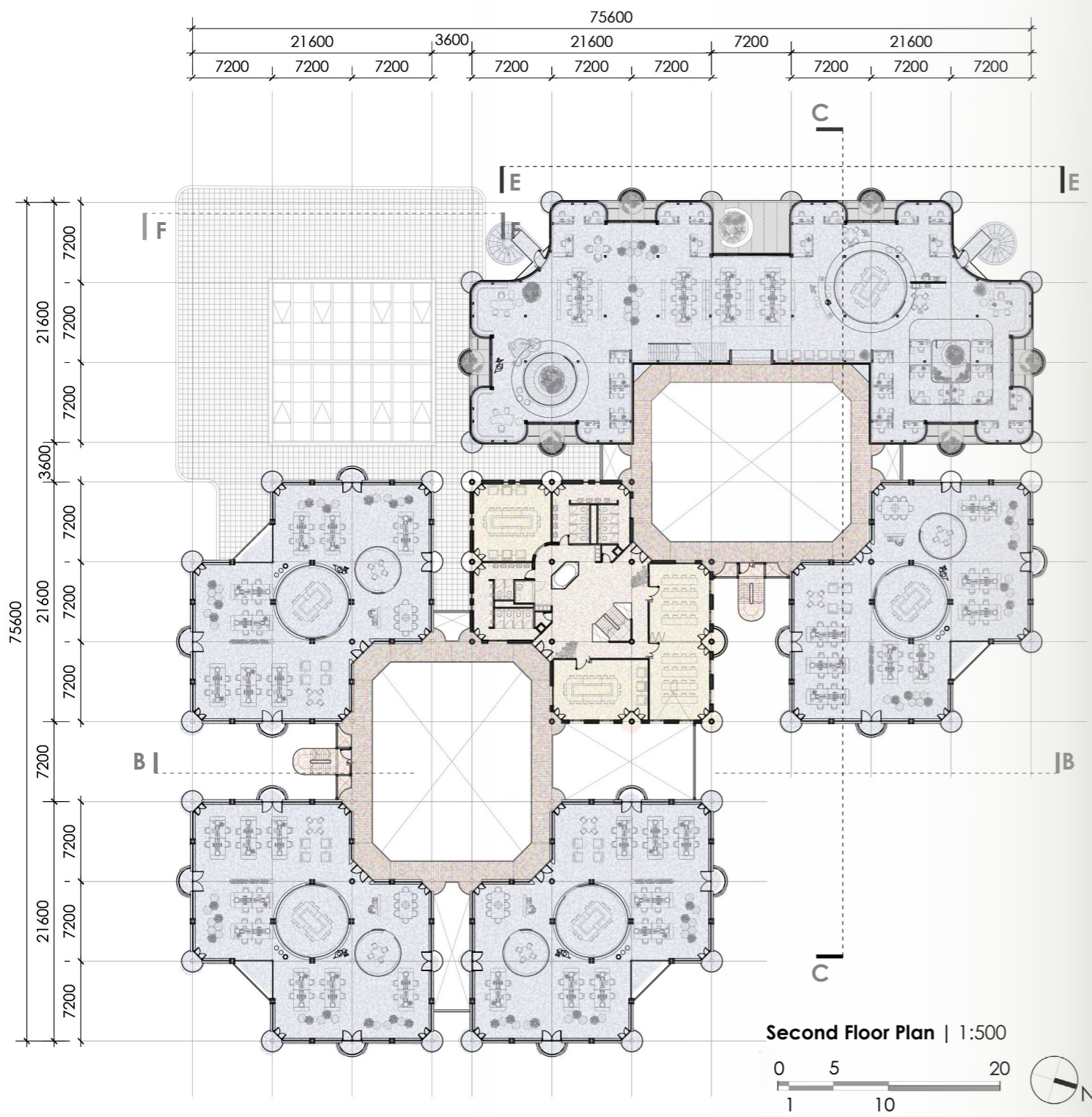
SOUTH CLUSTERS

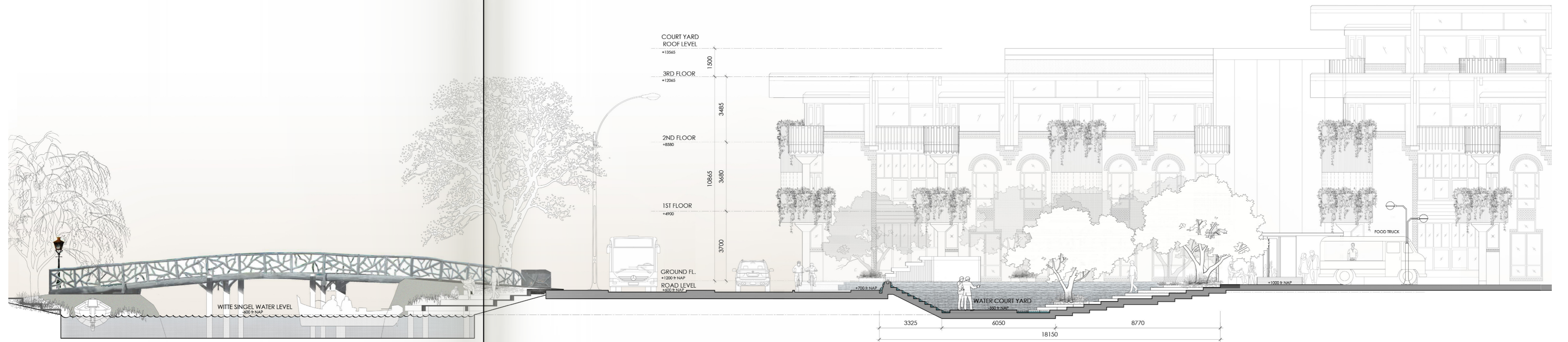


Ground Floor Plan
1:500

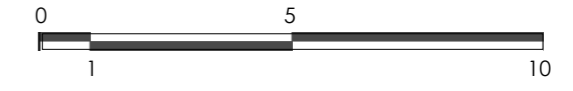


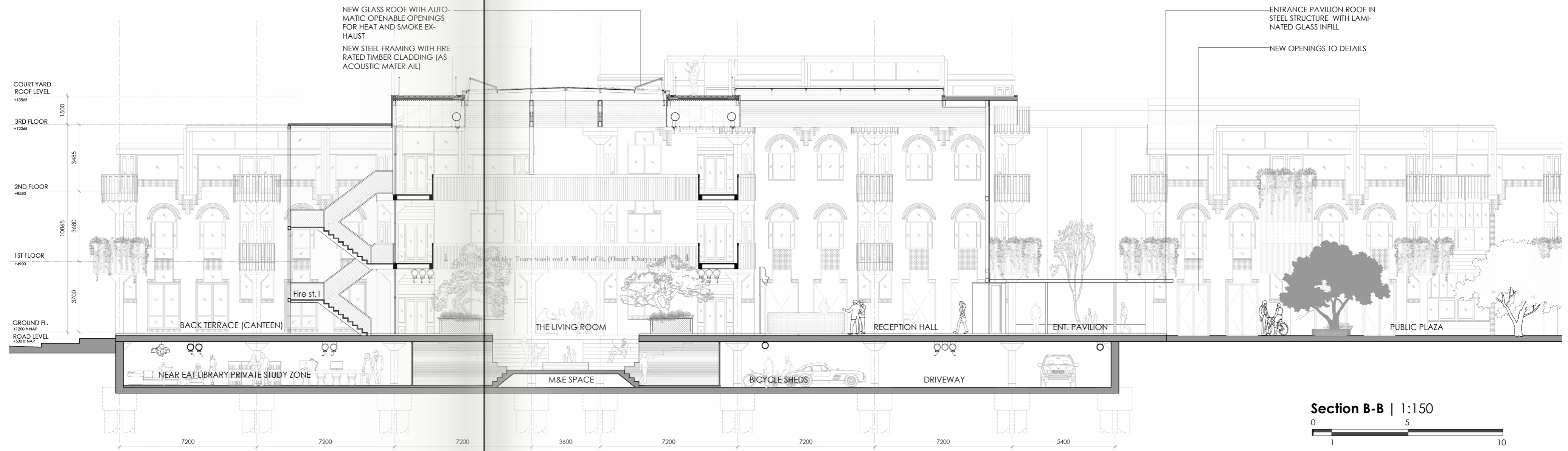


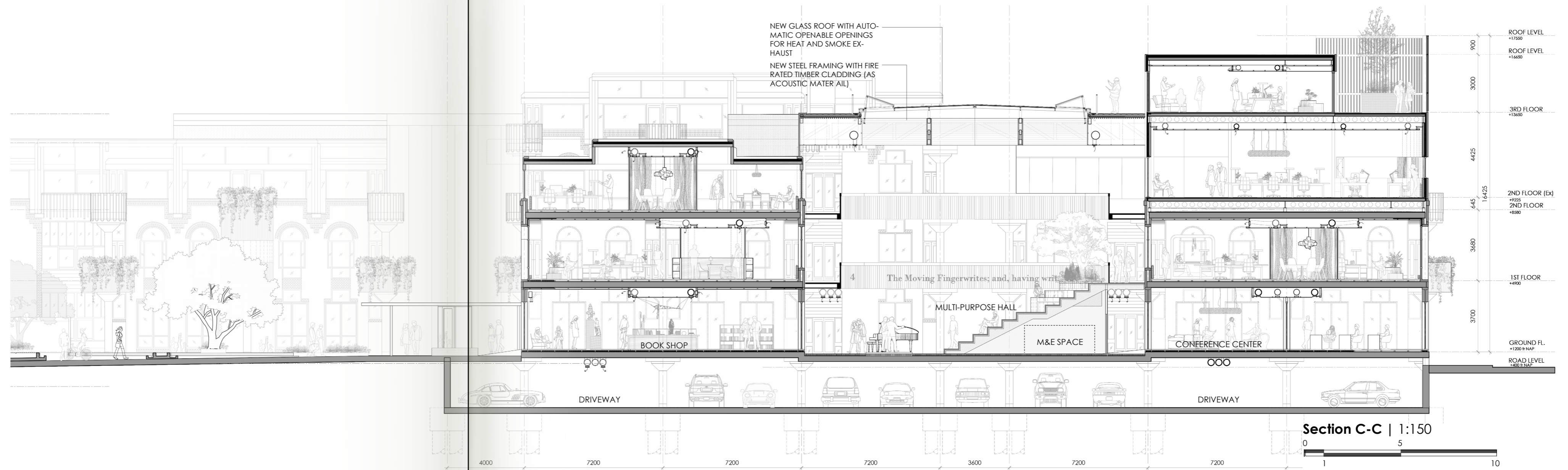


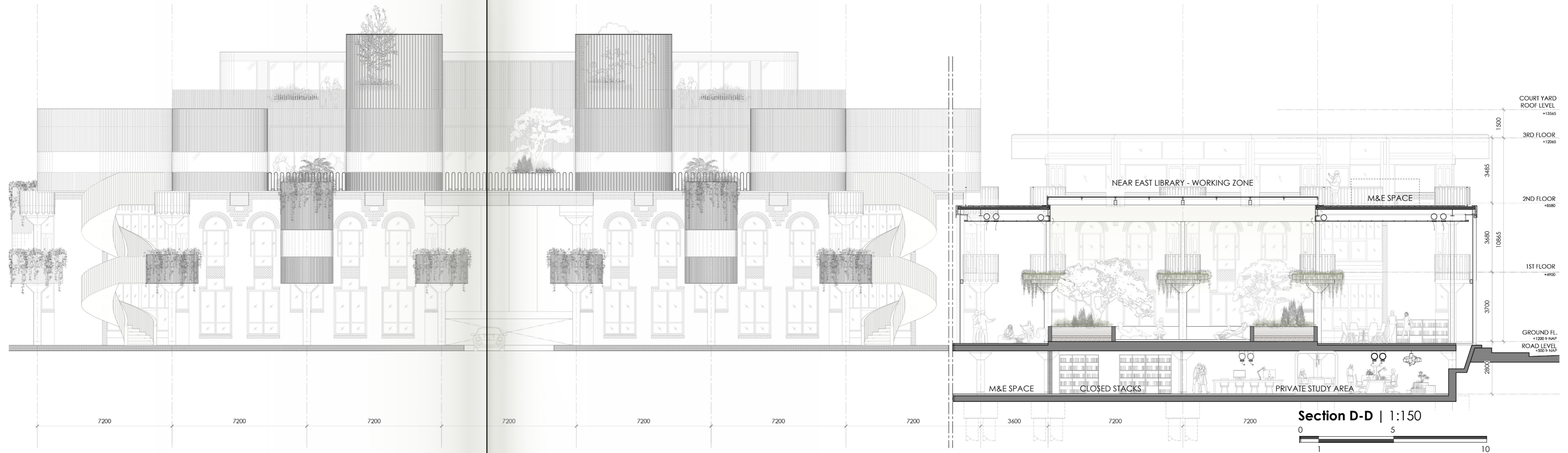


Section A-A | 1:150



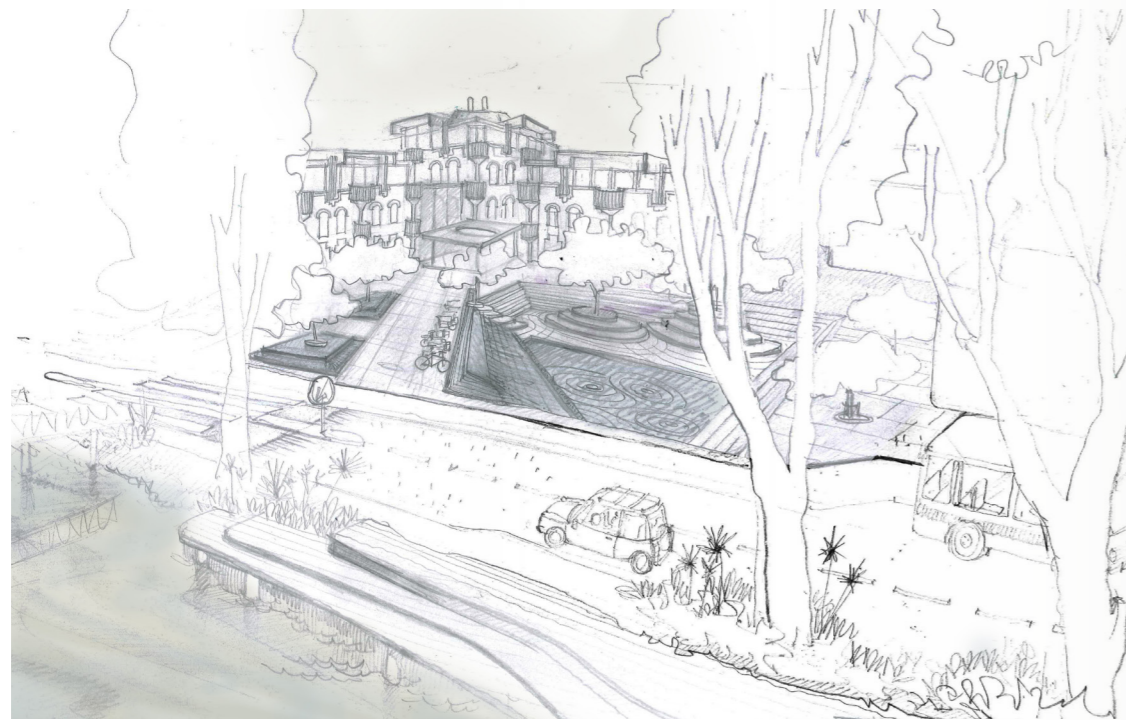
























THE 70'S ZITKUIL





IN 2017, LEIDEN UNIVERSITY
CELEBRATED THE
LEIDEN ASIA YEAR

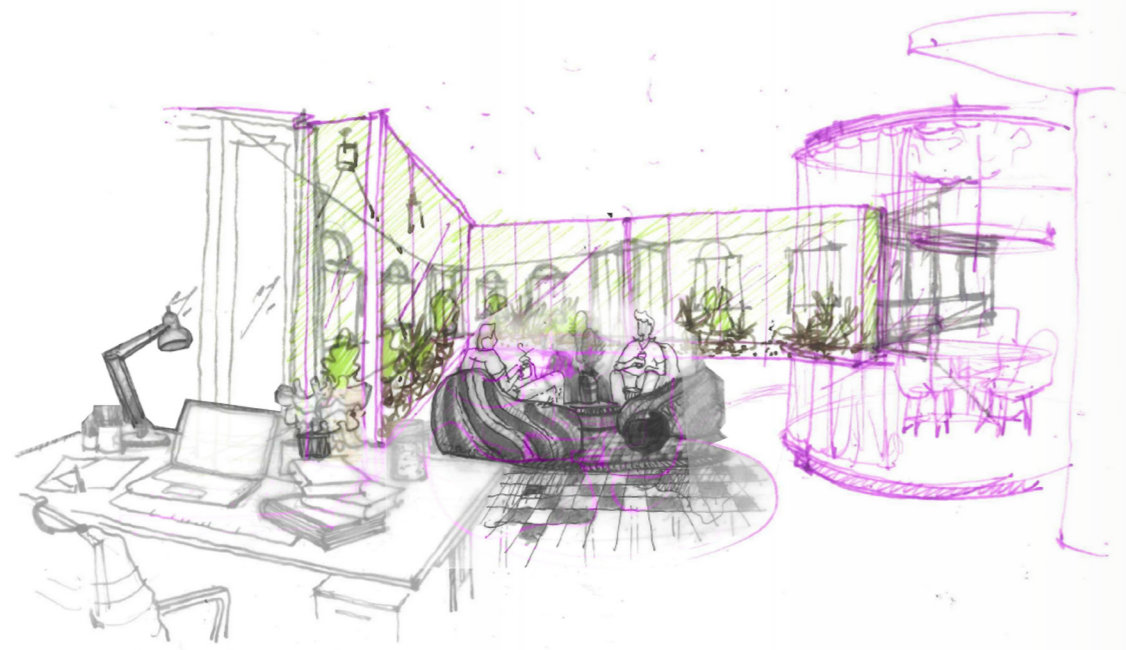


' a Living Museum'

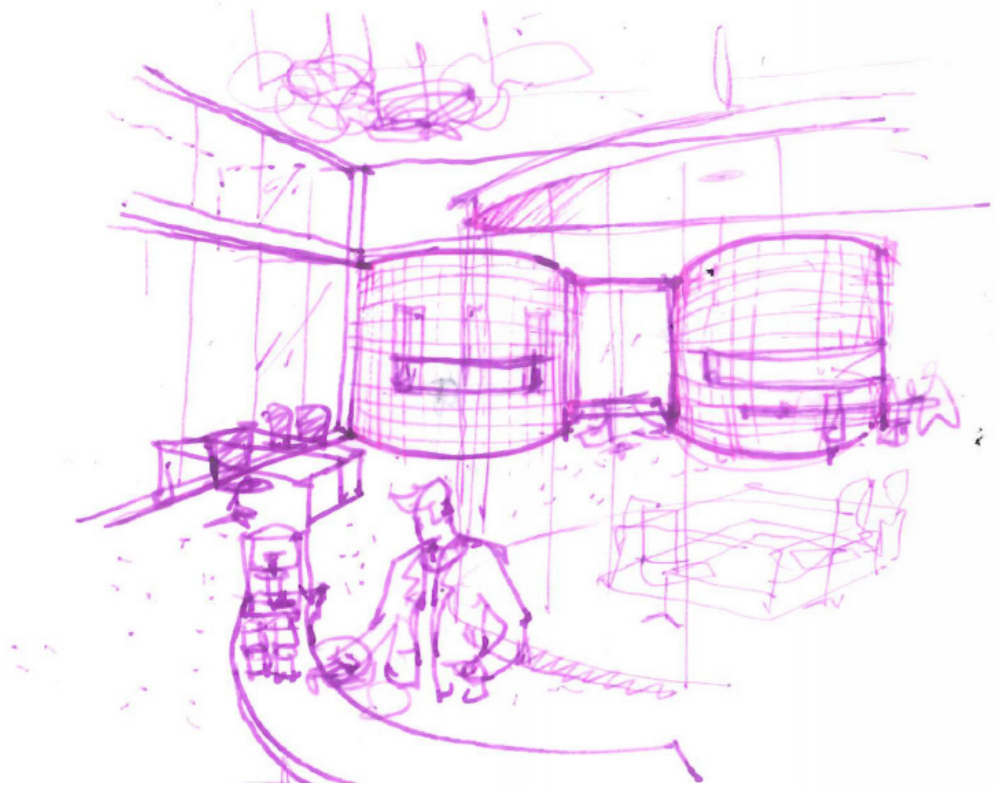






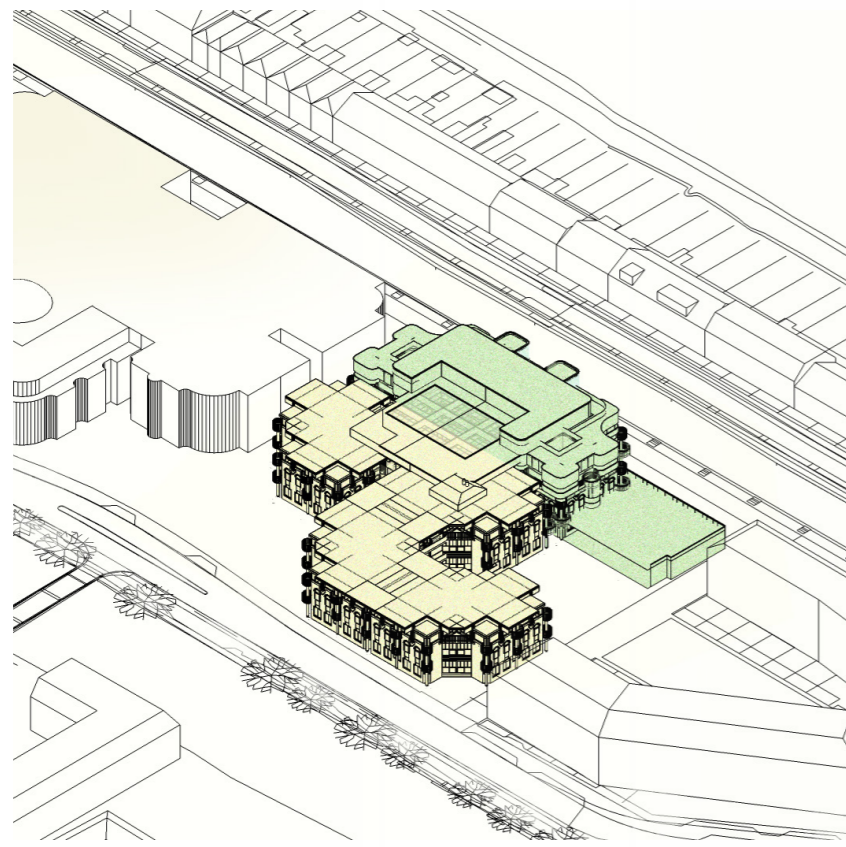




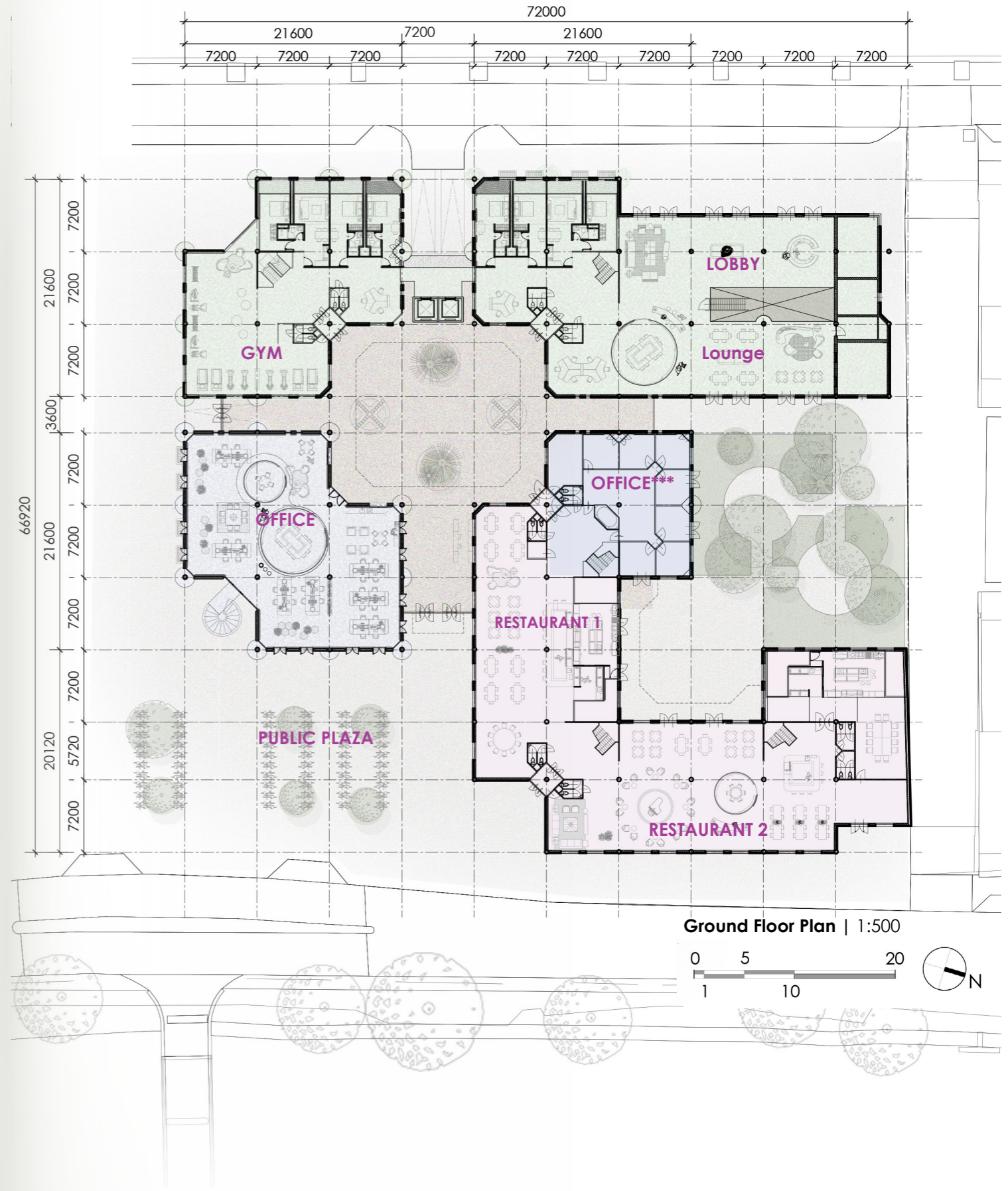




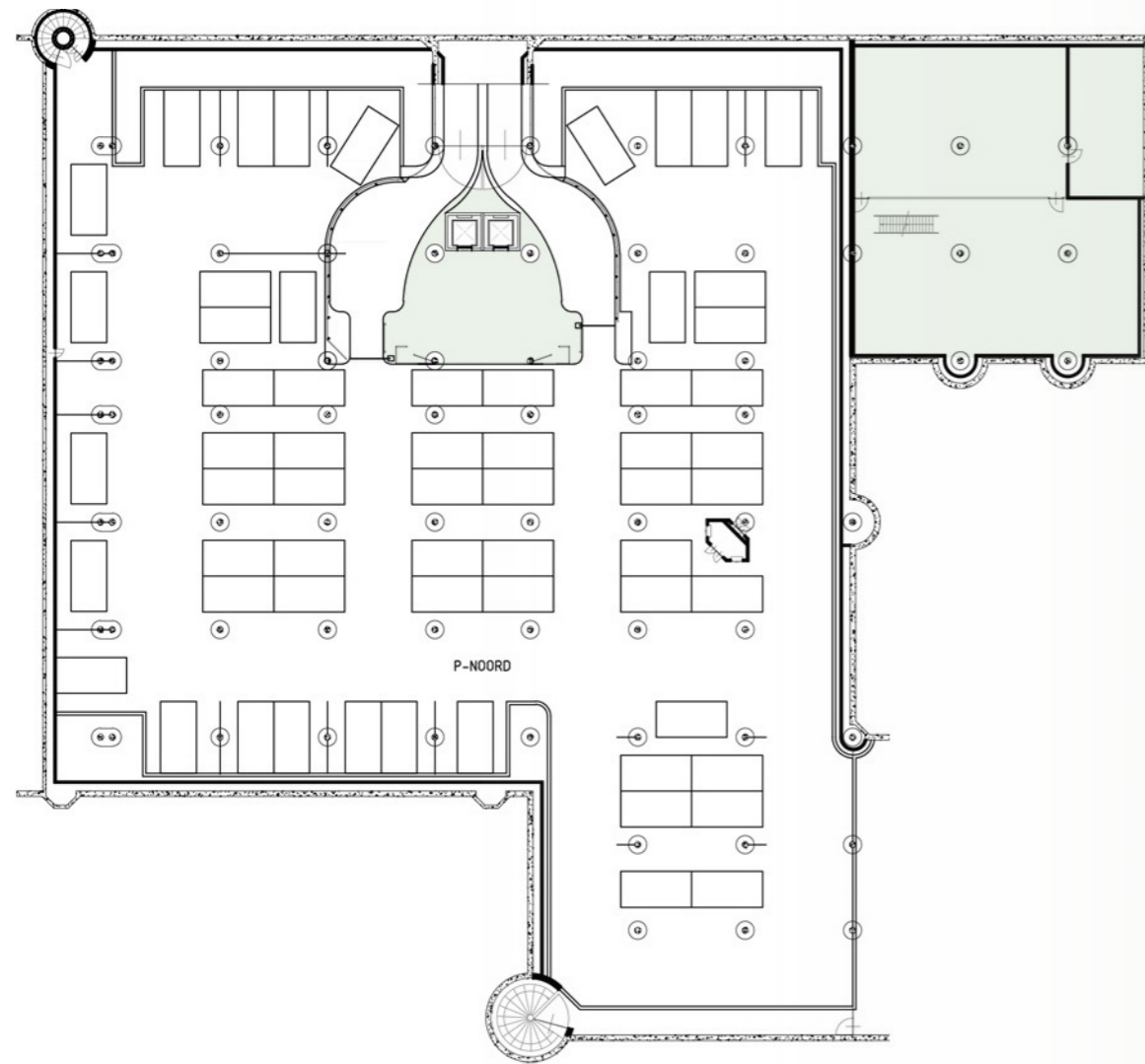




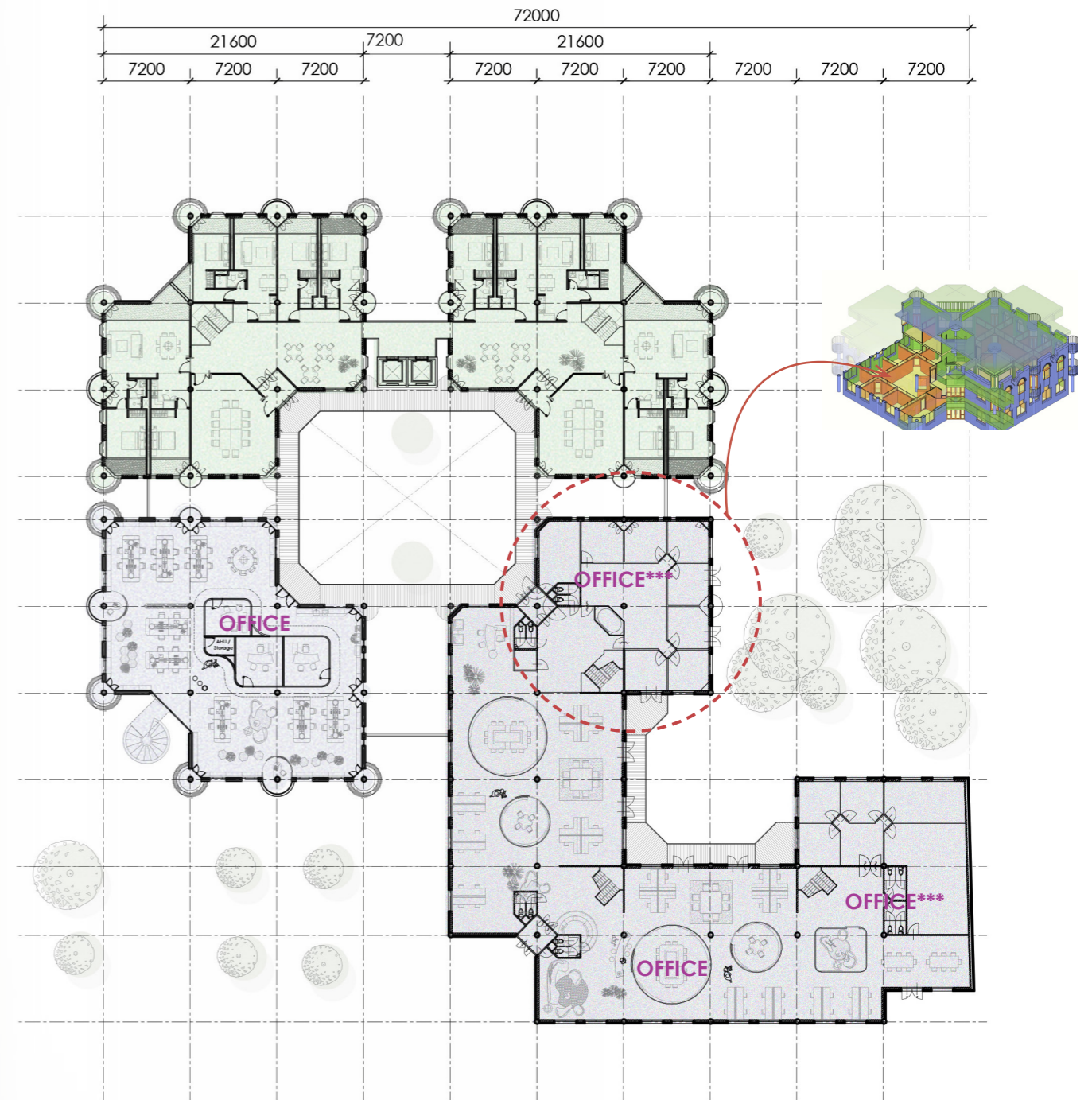
NORTH CLUSTERS



Ground Floor Plan | 1:500

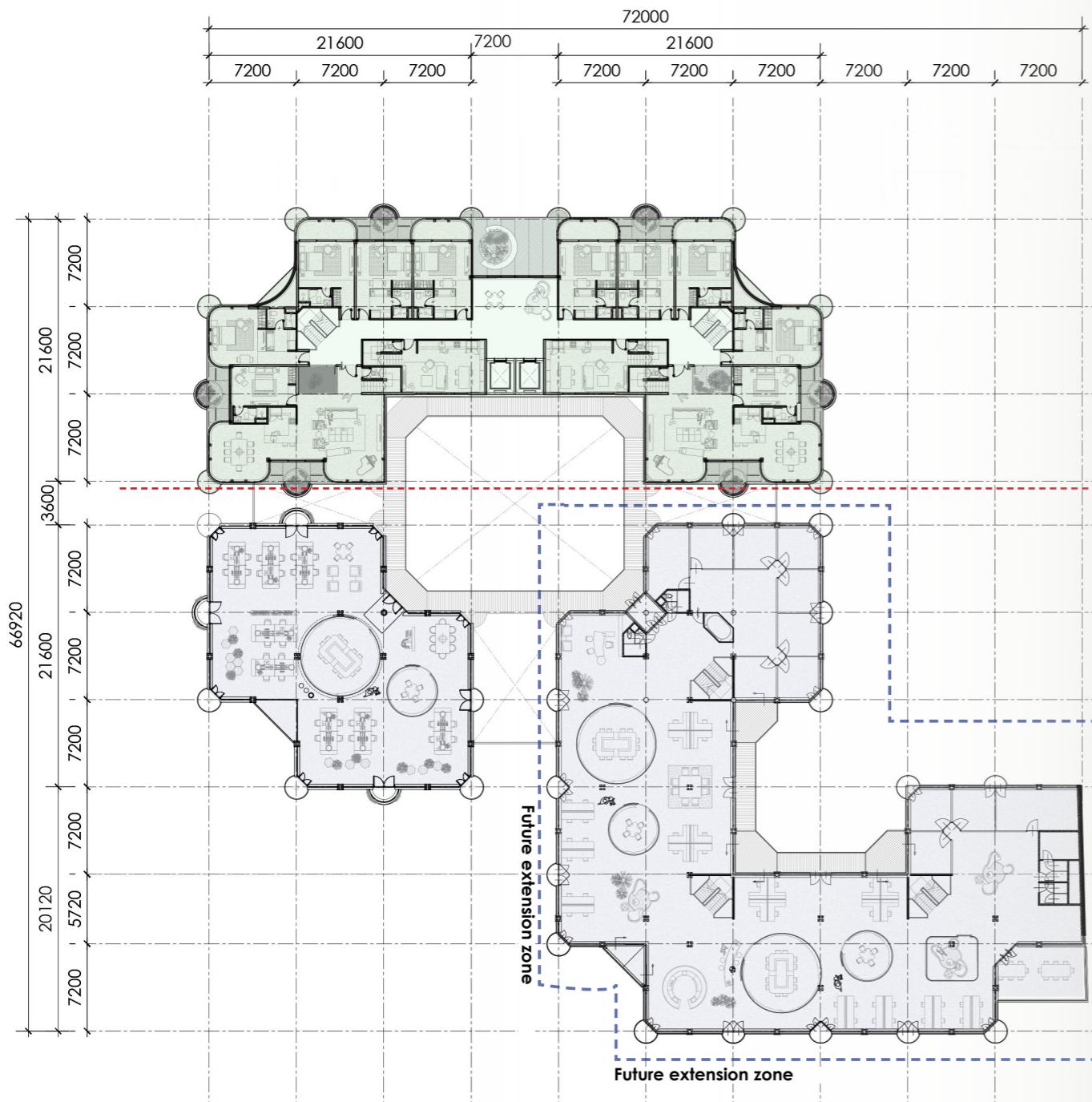


Basement Plan | 1:500

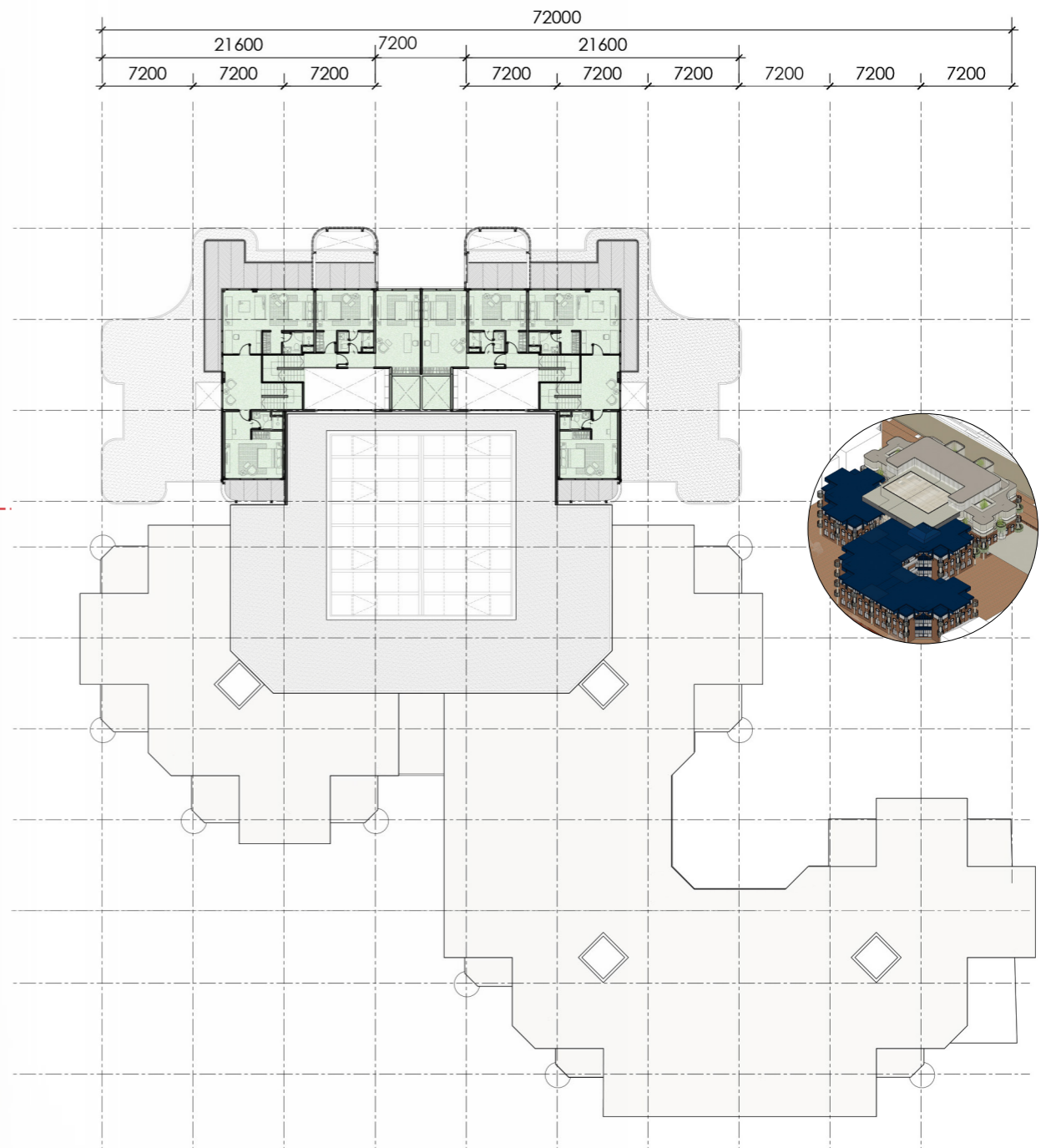


First Floor Plan | 1:500





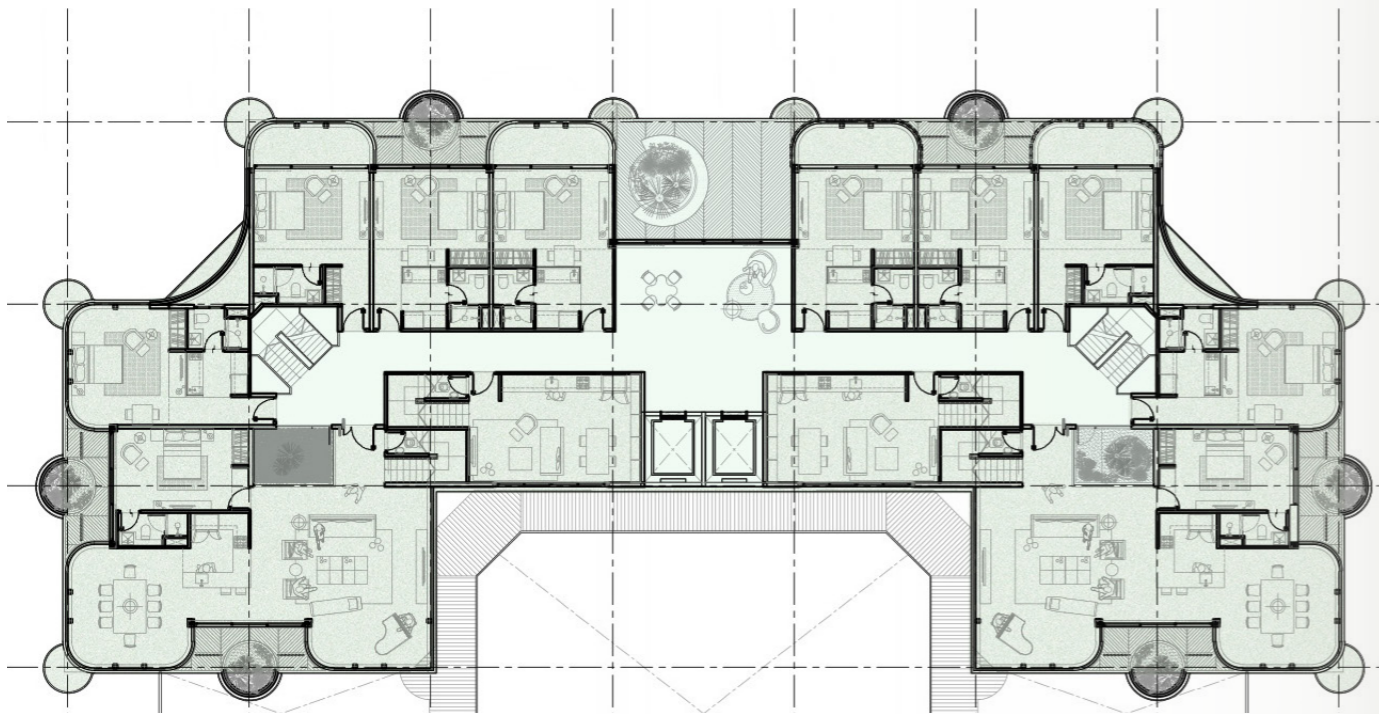
Second Floor Plan | 1:500



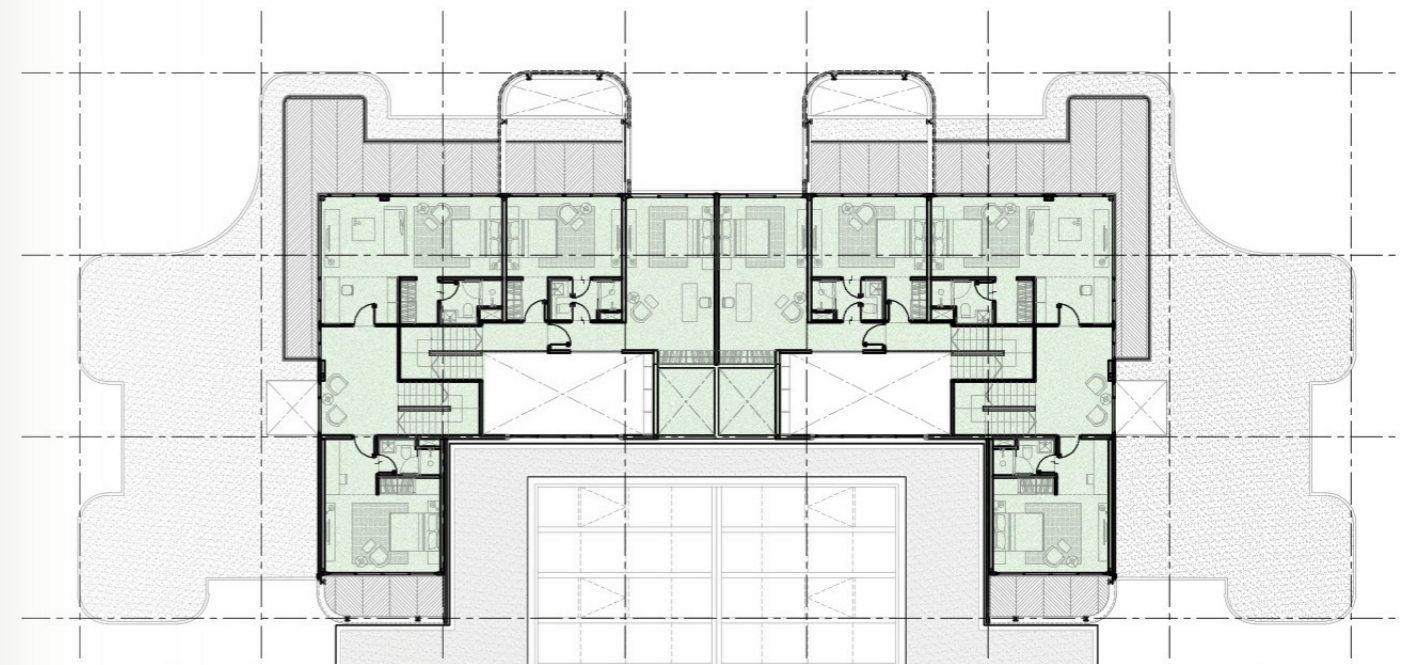
First Floor Plan | 1:500



P4's room arrangement
May 2018

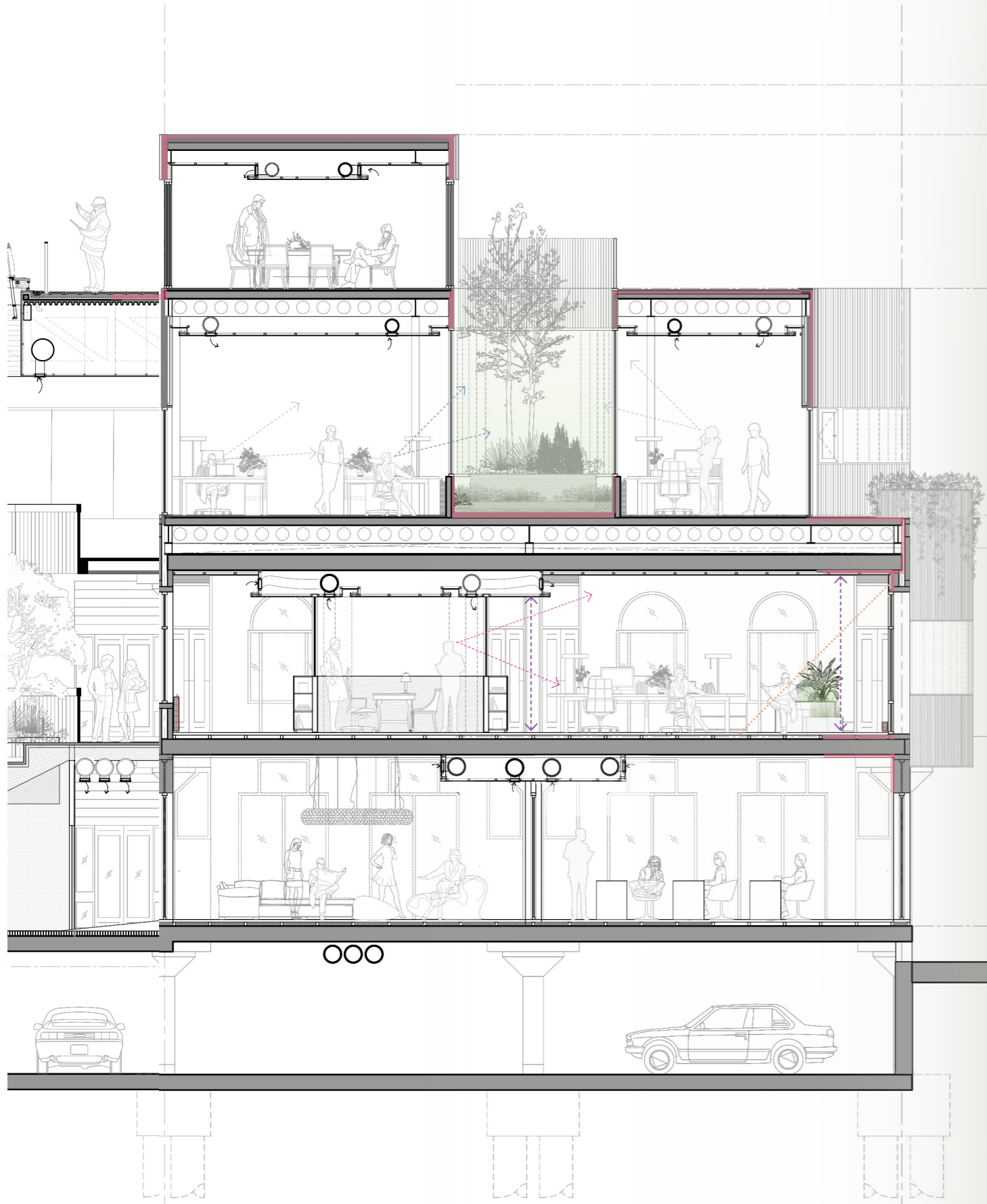


Second Floor Plan | 1:500

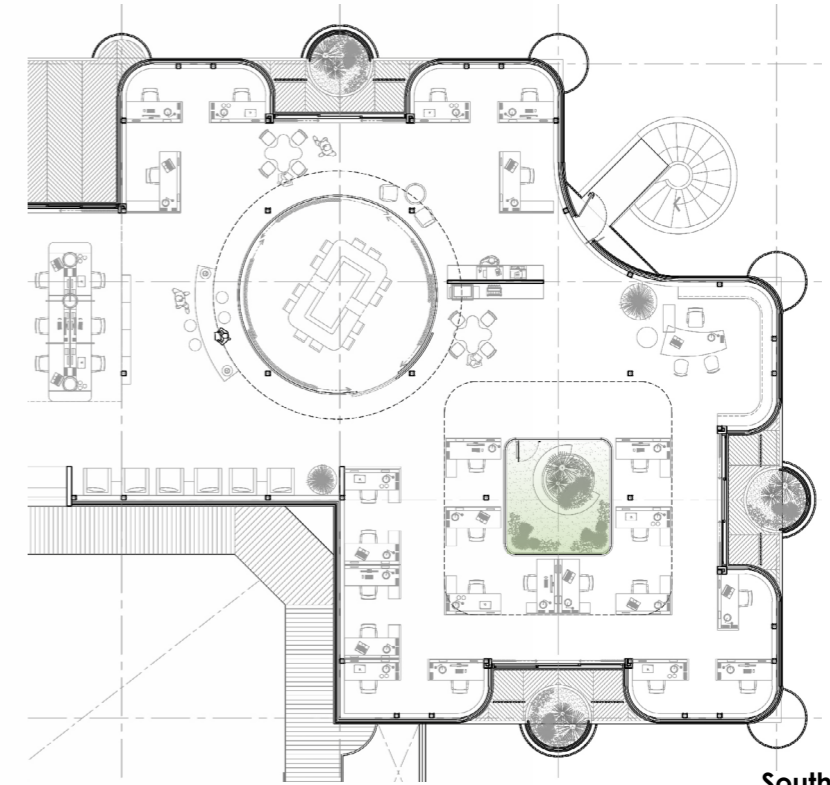


Third Floor Plan | 1:500

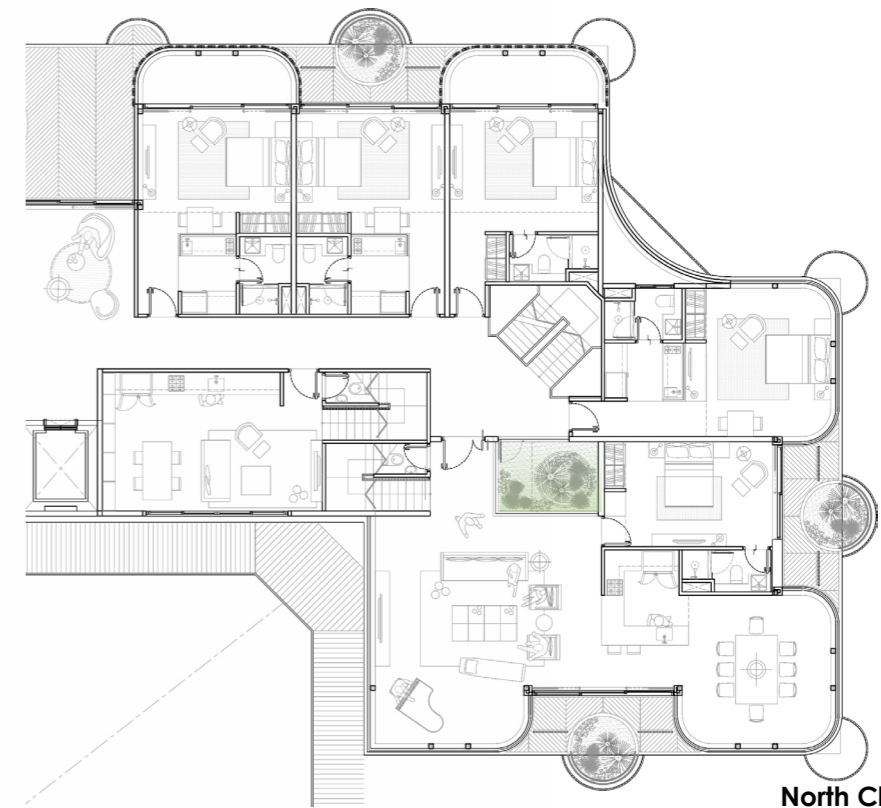




Section across the new green courtyard | 1:100



South Clusters
Second Floor Plan | 1:250

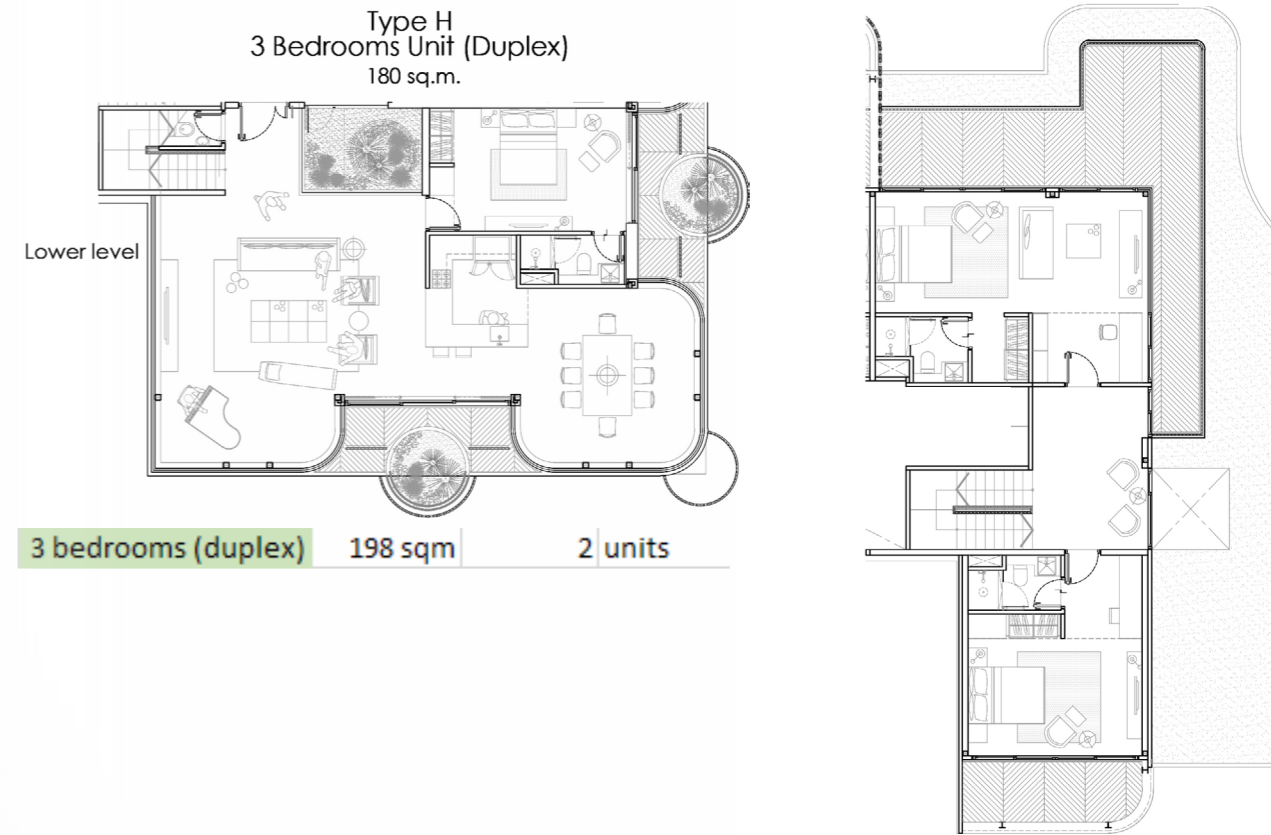
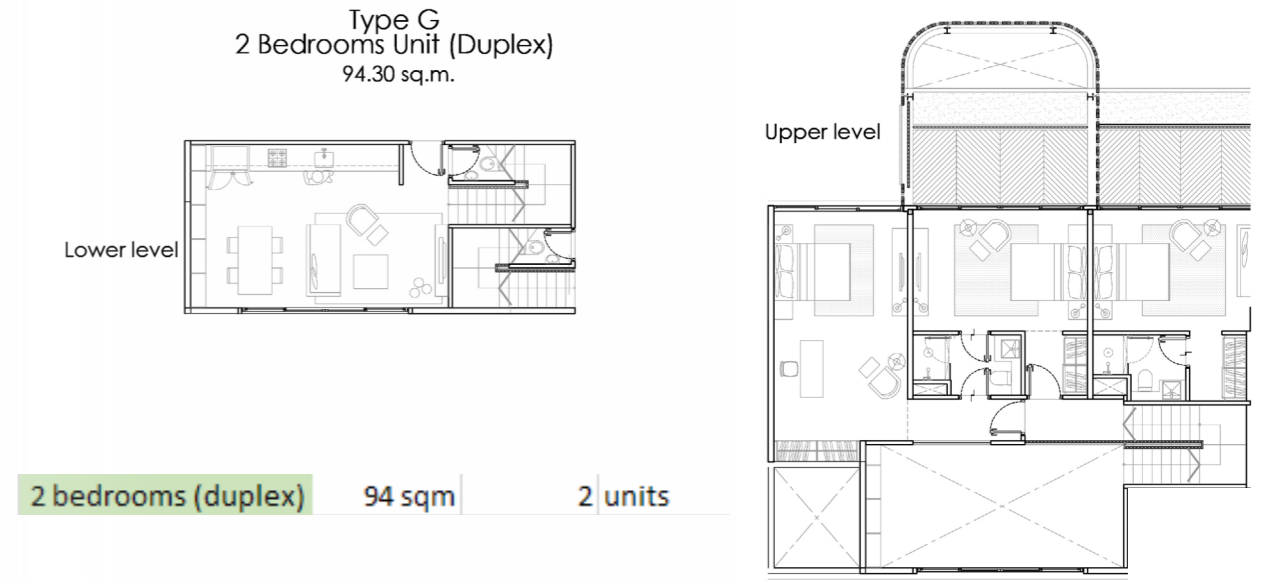
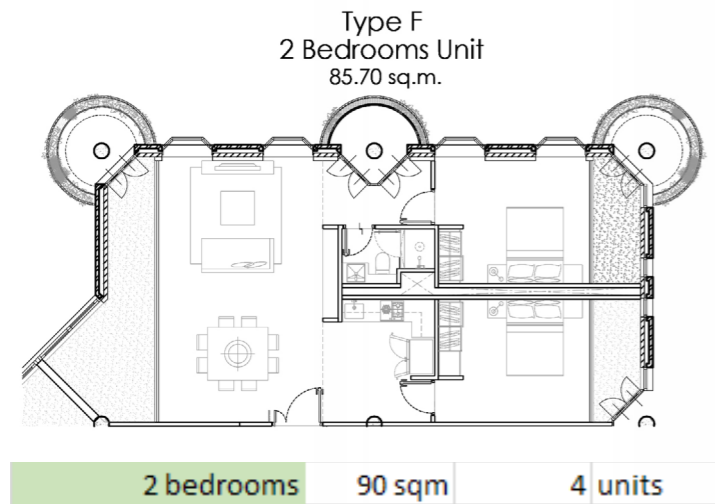
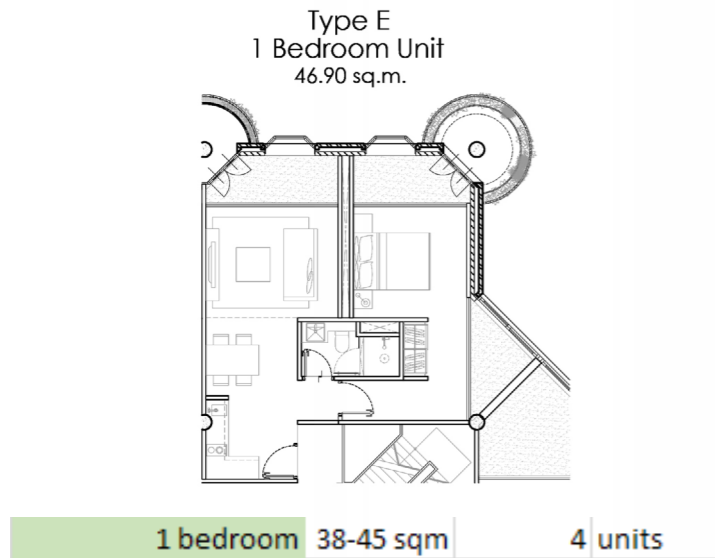
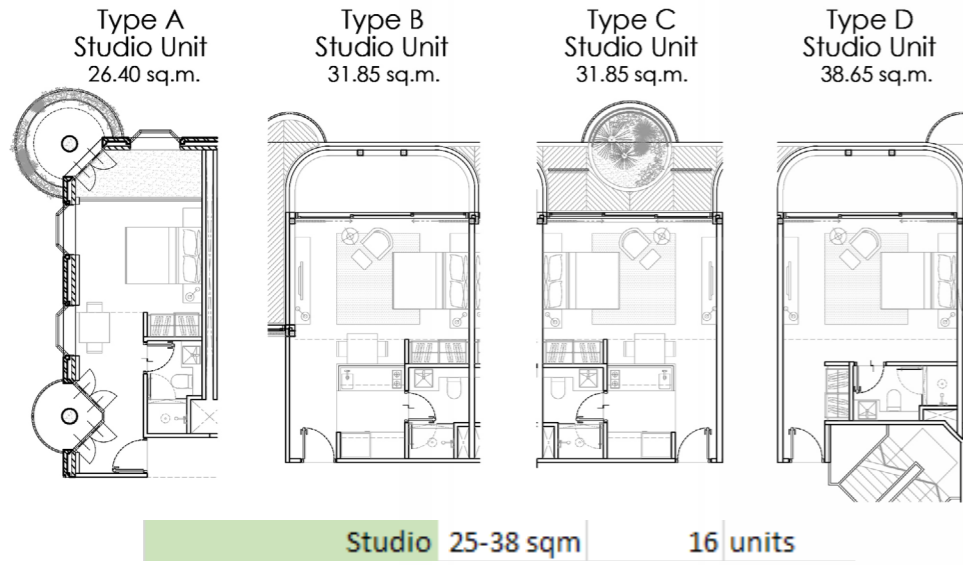


North Clusters
Second Floor Plan | 1:250



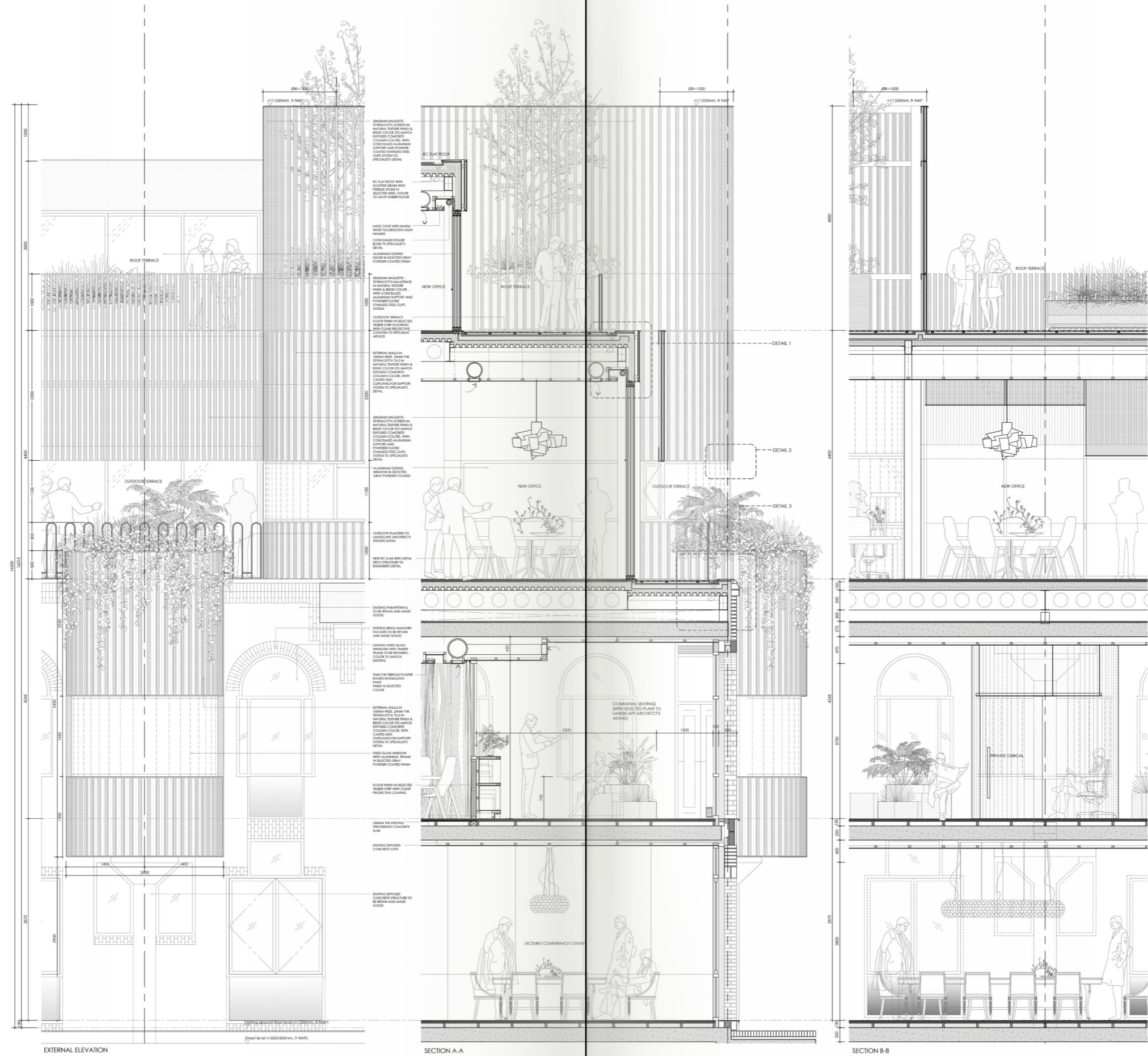
Design Experiment

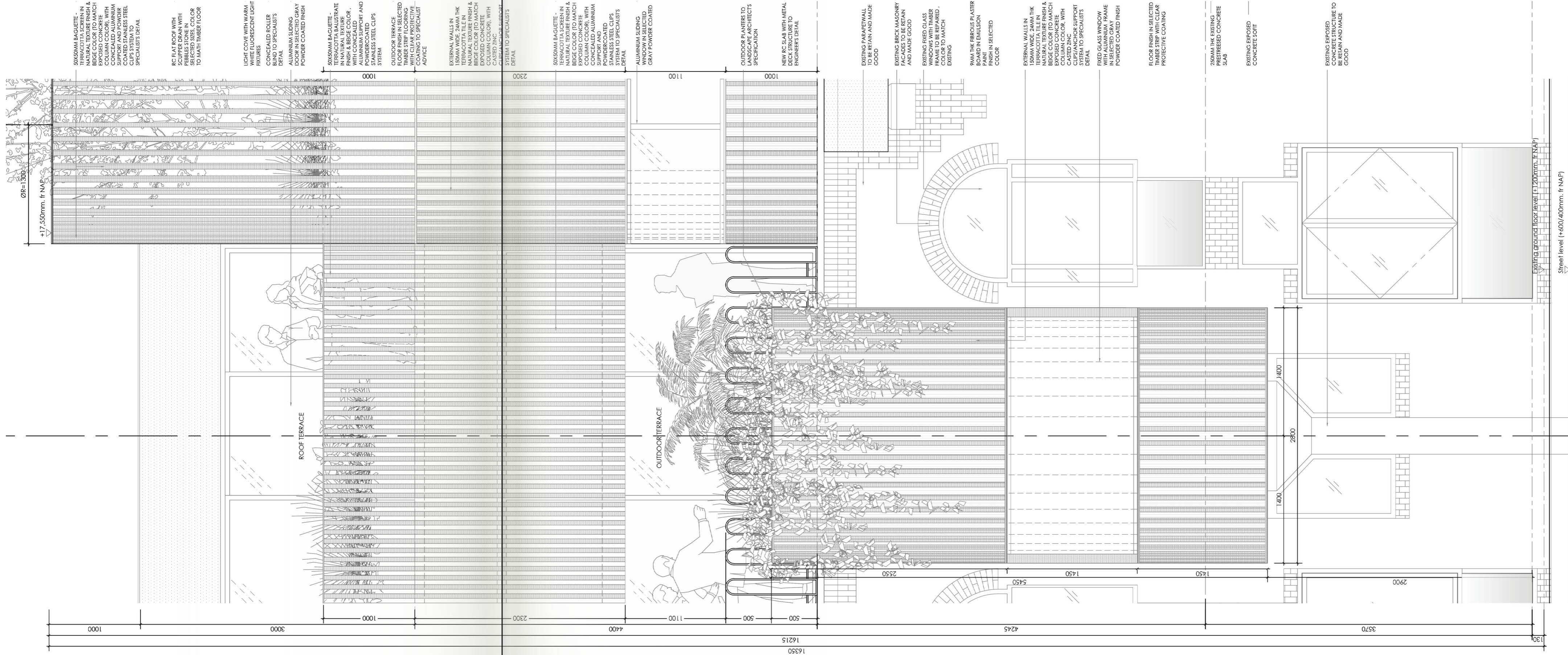
Room layout - Extension parts

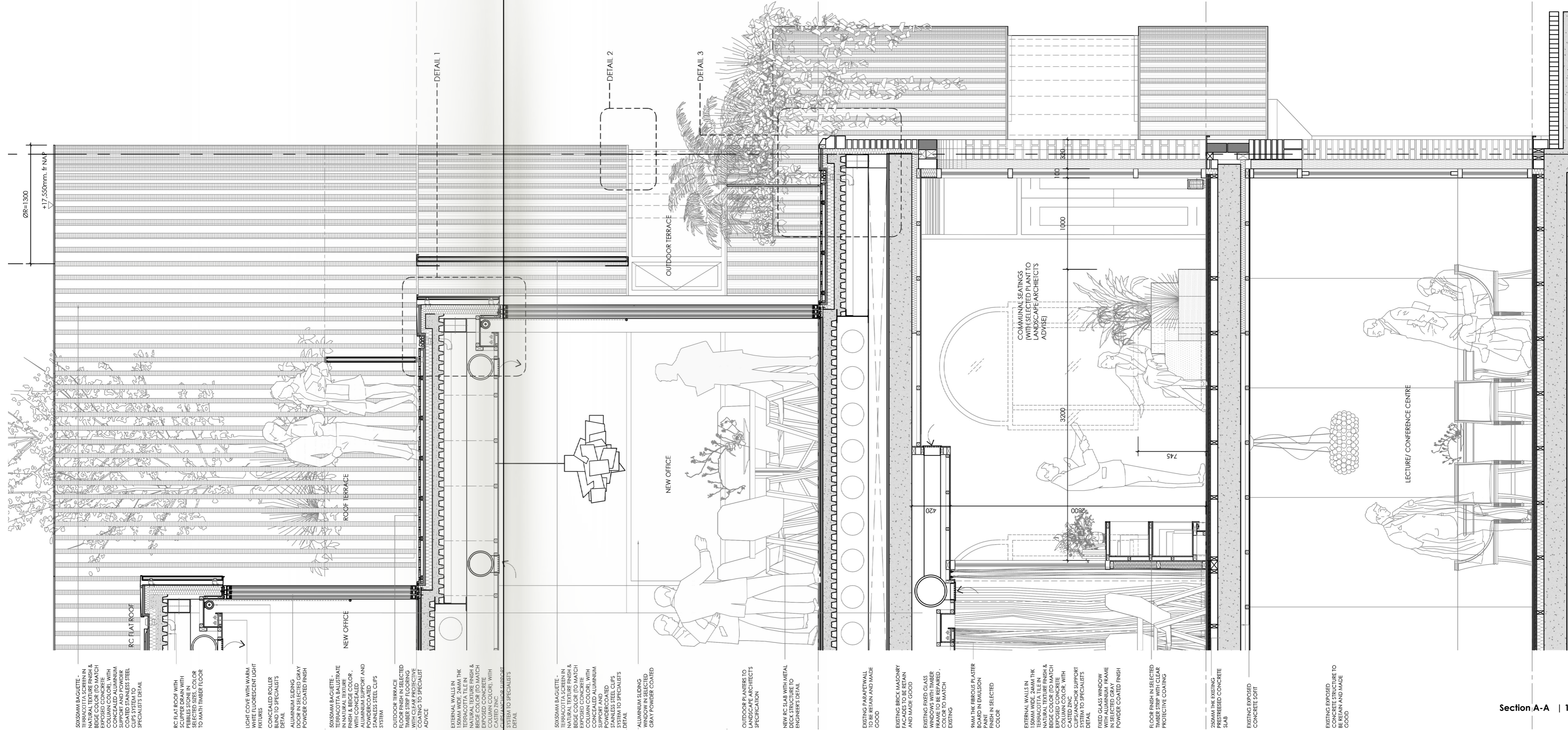


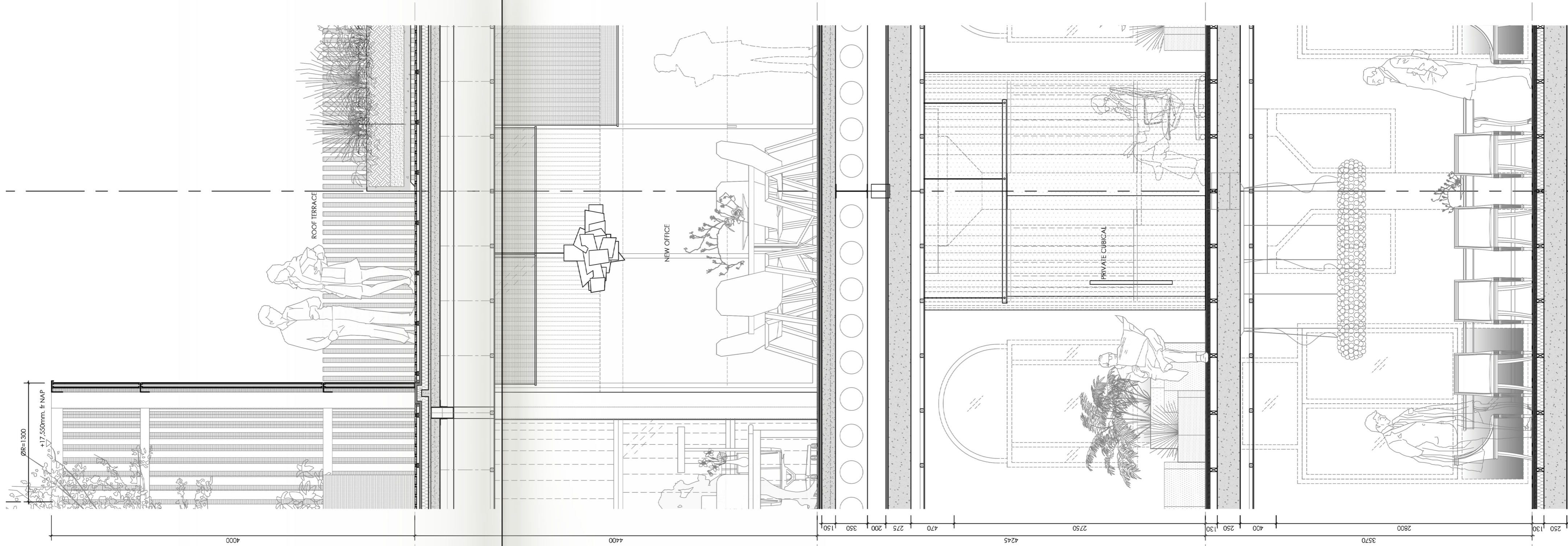
Residences 26 Units			2000 sqm
Studio	25-38 sqm	16 units	
1 bedroom	38-45 sqm	4 units	
2 bedrooms	90 sqm	4 units	
2 bedrooms (duplex)	94 sqm	2 units	
3 bedrooms (duplex)	198 sqm	2 units	



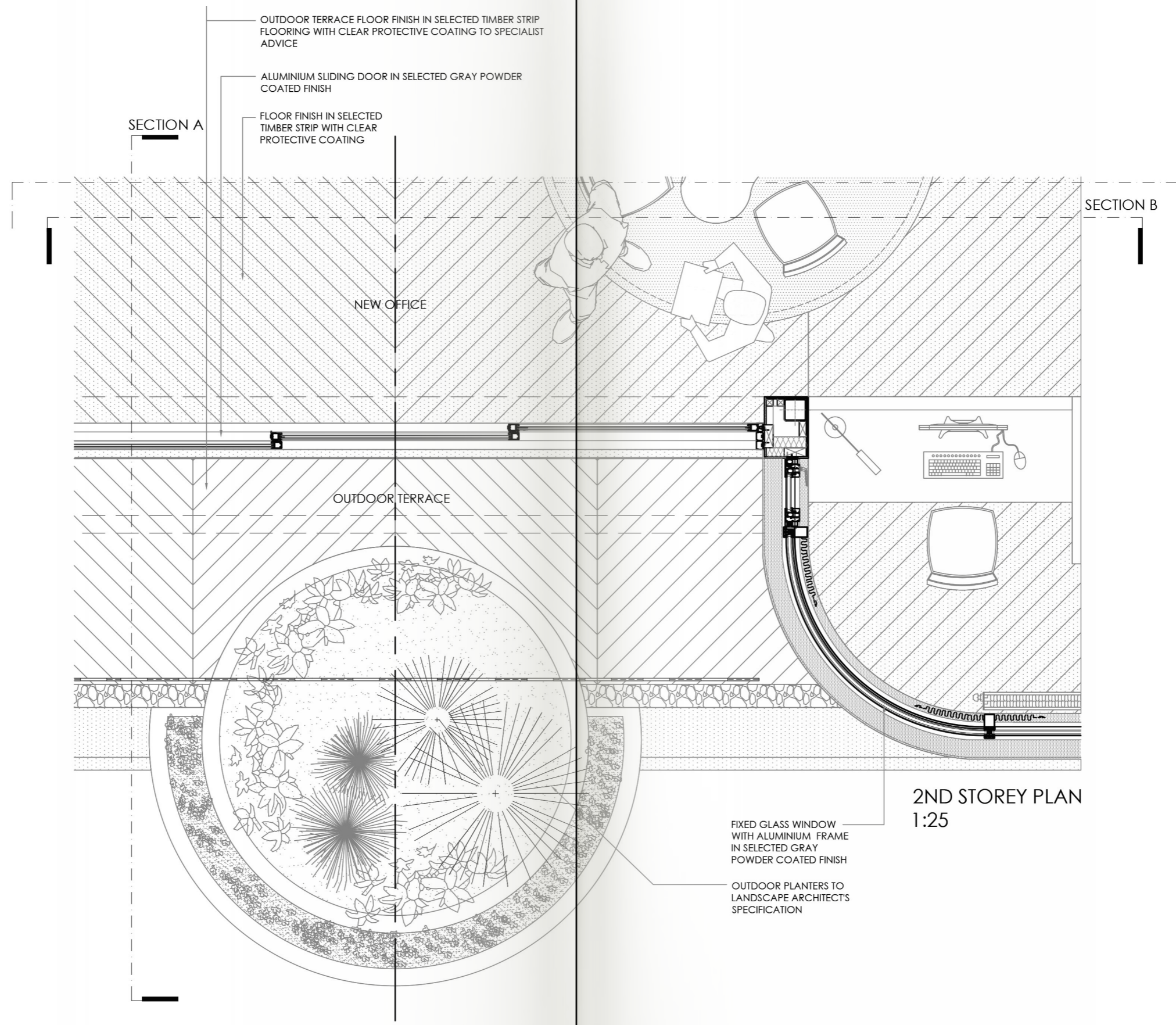


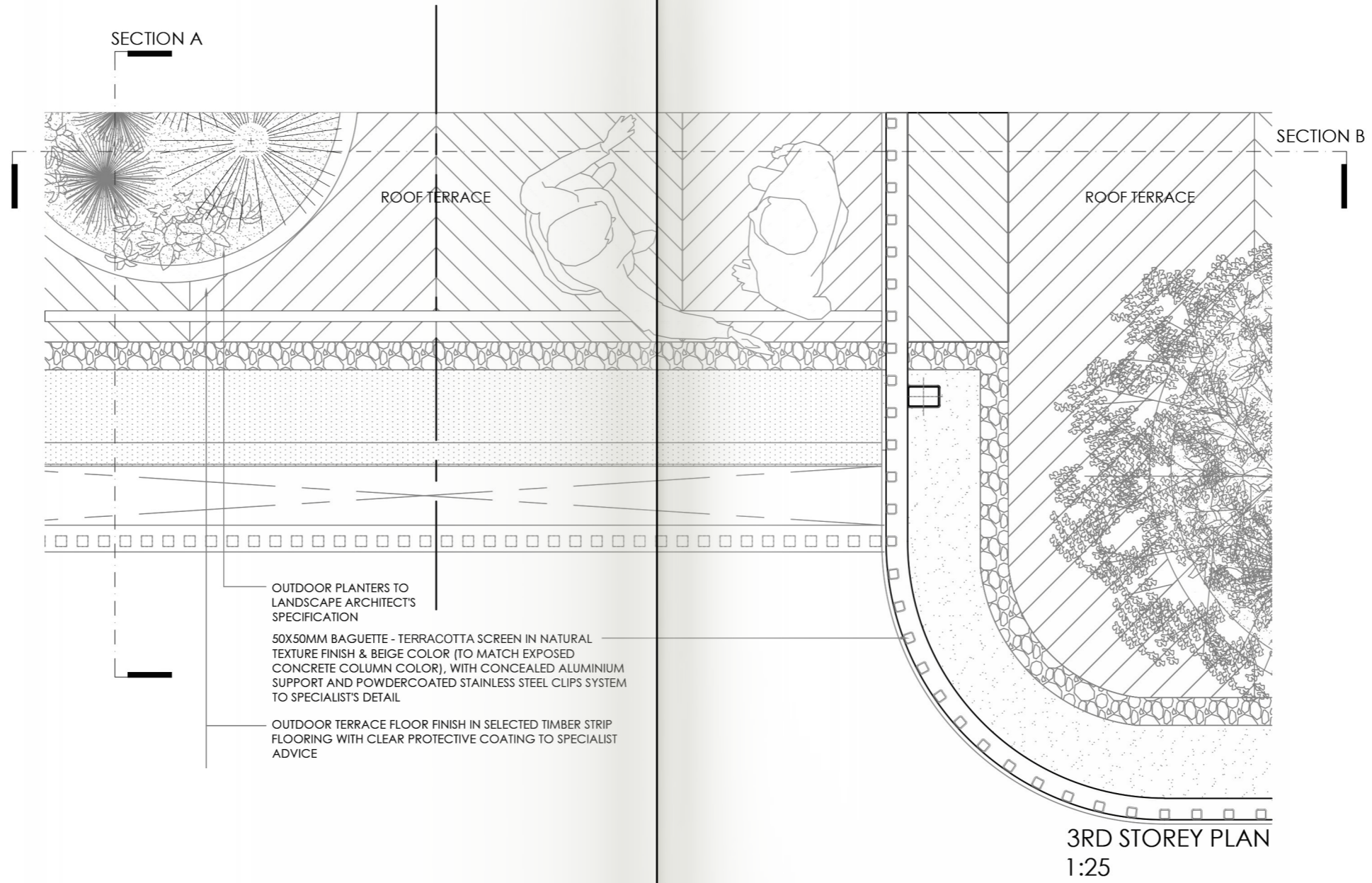


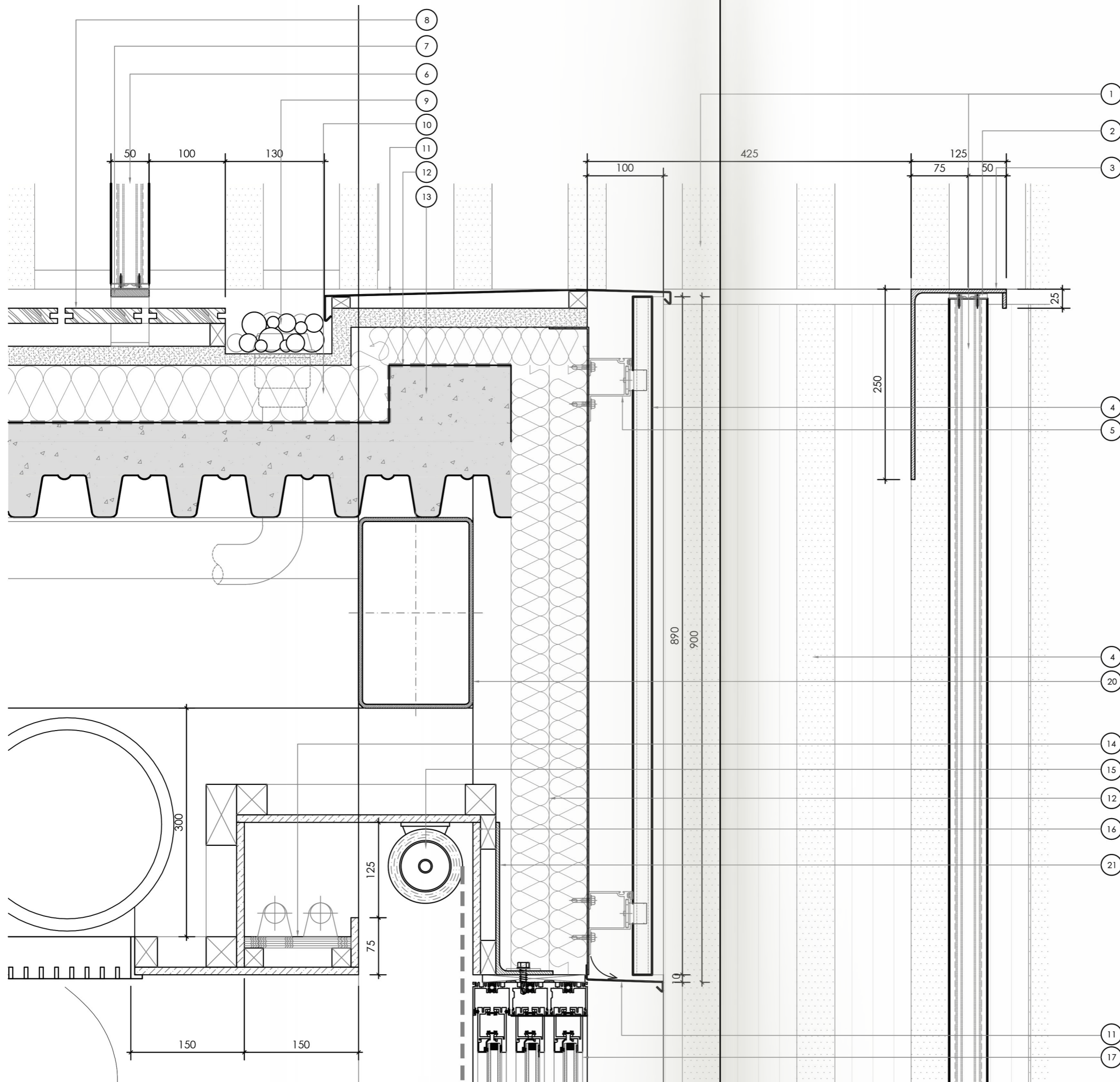




Section B-B | 1:30







ANNOTATIONS

- 1 50X50MM BAGUETTE - TERRACOTTA SCREEN IN NATURAL TEXTURE FINISH & BEIGE/LIGHT GREY COLOR (TO MATCH EXPOSED CONCRETE COLUMN COLOR)
- 2 CONCEALED ALUMINIUM SUPPORT AND BEIGE/LIGHT GREY COLORPOWDER COATED STAINLESS STEEL CLIPS SYSTEM TO SPECIALIST'S DETAIL
- 3 250X125X5MM THK. L-ANGLE M/S BEAM AS SCREEN FRAMING (TO STRUCTURAL ENGR'S SPECIFICATION) IN SELECTED BEIGE/LIGHT GREY COLOR SPRAY PAINTED TO MATCH TERRACOTTA SCREEN
- 4 EXTERNAL WALLS IN 150MM WIDE, 24MM THK TERRACOTTA TILE IN NATURAL TEXTURE FINISH & BEIGE/LIGHT GREY COLOR (TO MATCH EXPOSED CONCRETE COLUMN COLOR)
- 5 WALL CLADDING FIXING IN CASTED ZINC CLIPS/ANCHOR SUPPORT SYSTEM TO SPECIALIST'S DETAIL
- 6 50X50MM BAGUETTE - TERRACOTTA BALUSTRADES IN NATURAL TEXTURE FINISH & BEIGE COLOR , WITH CONCEALED ALUMINIUM SUPPORT AND POWDERCOATED STAINLESS STEEL CLIPS SYSTEM
- 7 10MM THK. M/S FLAT PALTE AS RAILING FRAMING IN N SELECTED BEIGE/LIGHT GREY COLOR SPRAY PAINTED TO MATCH TERRACOTTA SCREEN
- 8 OUTDOOR TERRACE FLOOR FINISH IN 100MM WIDE, 20MM THK. SELECTED TIMBER STRIP FLOORING WITH CLEAR PROTECTIVE COATING TO SPECIALIST ADVICE
- 9 RC FLAT ROOF WITH SCUPPER DRAIN WITH PEBBLES STONE IN SELECTED SIZES, COLOR TO MATH TIMBER FLOOR
- 10 THERMAL INSULATION TO SPECIALIST'S SPECIFICATION
- 11 G/S FLASHING SEALED & SEALANT TO SPECIALIST'S DETAIL IN SELECTED MAT BEIGE/LIGHT GREY COLOR COATED
- 12 WATERPROOFING MEMBRANE TO ARCHITECTS APPROVAL
- 13 NEW RC SLAB WITH METAL DECK STRUCTURE TO ENGINEER'S DETAIL
- 14 LIGHT COVE WITH WARM WHITE FLUORESCENT LIGHT FIXTURES
- 15 CONCEALED ROLLER BLIND TO SPECIALIST'S DETAIL
- 16 9MM THK. FIBROUS PLASTER BOARD CEILING IN WHITE EMULSION PAINT FINISH
- 17 ALUMINIUM SLIDING DOOR IN SELECTED GRAY POWDER COATED FINISH
- 18 FIXED GLASS WINDOW WITH ALUMINIUM FRAME IN SELECTED GRAY POWDER COATED FINISH
- 19 LIGHT FILTERING CURTAIN CURTAIN TO INTERIOR DESIGNER SELECTION AND SPECIFICATIONS
- 20 250X150X5MM THK. RSH M/S BEAM TO STRUCTURAL ENGR'S DETAIL
- 21 200X100X5MM THK. L-ANGLE M/S BEAM AS WINDOW FRAMING, TO STRUCTURAL ENGR'S SPECIFICATION
- 22 EXISTING PARAPETWALL / BRICK MASONRY FACADES TO BE RETAIN AND MADE GOOD

