

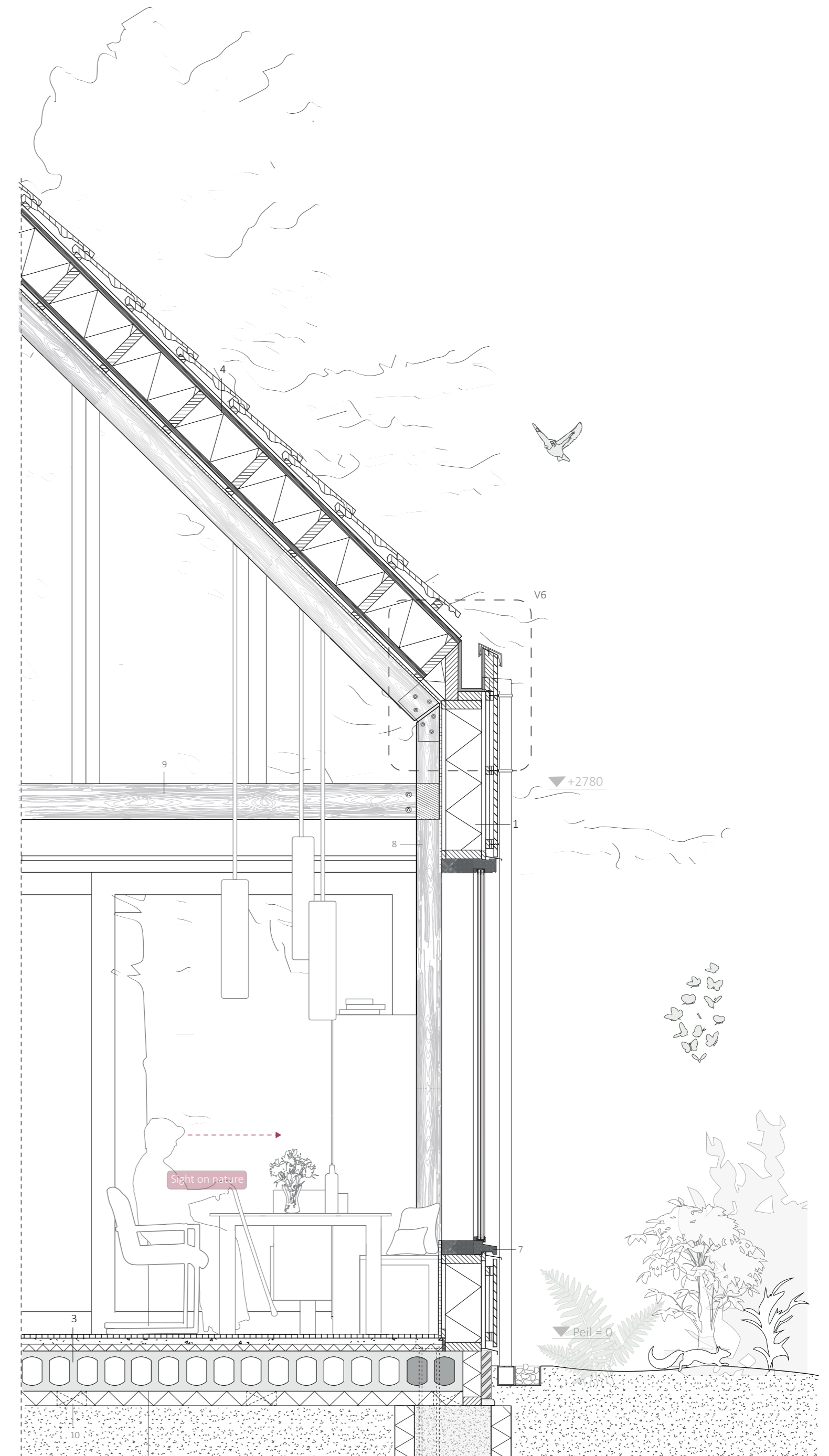
FACADE FRAGMENT 2

PRIVATE SIDE



VERTICAL SECTION DD

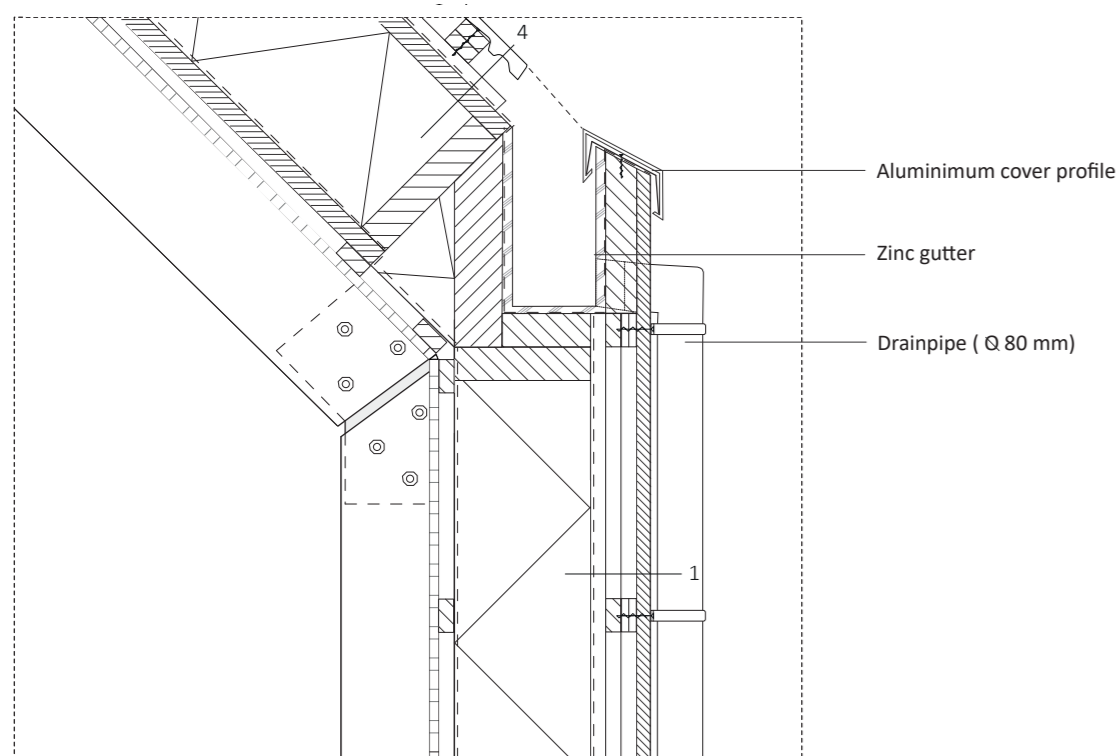
Scale 1:20



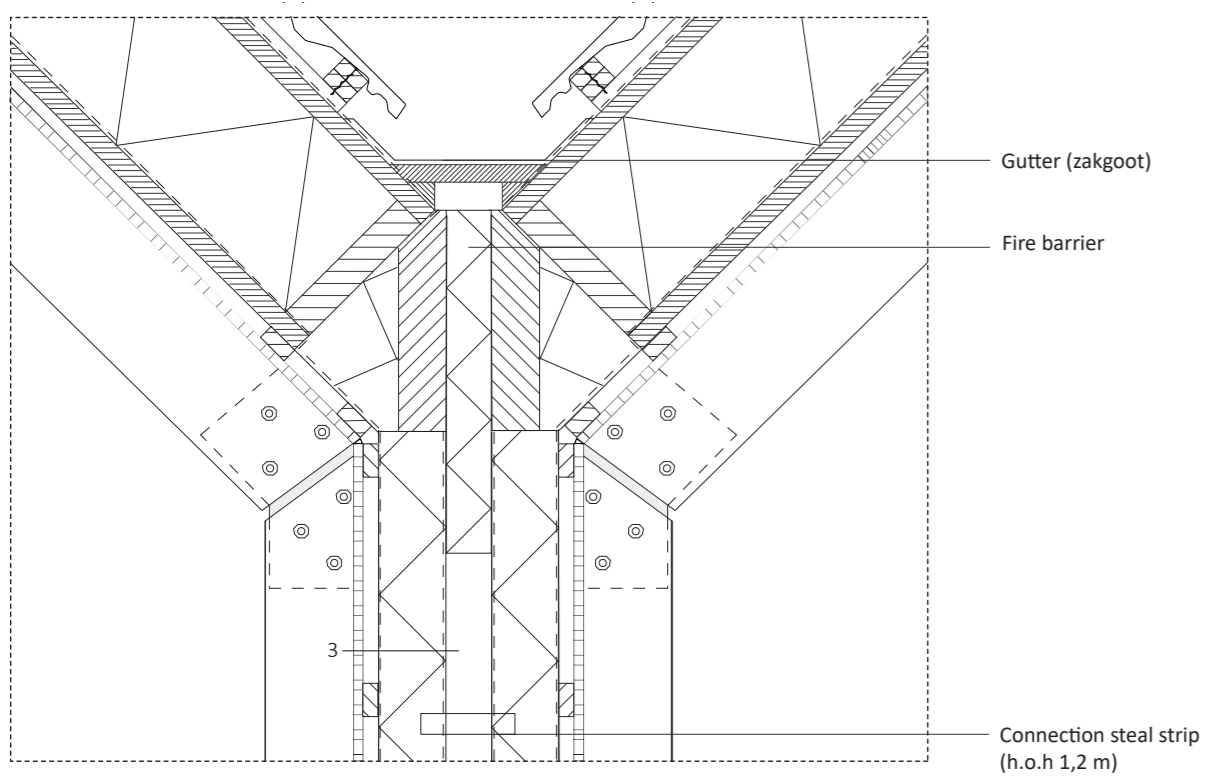
VERTICAL DETAILS

Scale 1:10

DETAIL V6



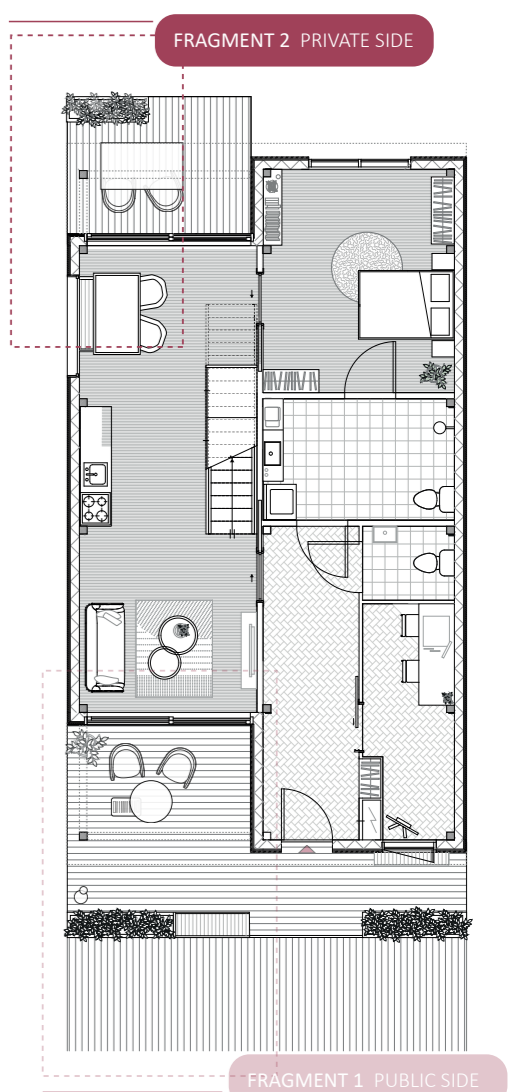
DETAIL V6 | HOUSE SEPERATING WALL



DETAILED INFORMATION

- 1 Facade construction (288 mm)**
 - Plasterboard with painting (12 mm)
 - Horizontal battens (20 mm)
 - Vapor barrier
 - Insulation 180 mm (Rc= 6,0 m2K/W)
 - Water resistant / vapor permeable foil
 - Vertical trussing and horizontal battening (2 x 20 mm) (h.o.h. 400 mm)
 - Grad profile mounting system (18 mm)
 - Bamboo cladding (18 mm)(Moso Bamboo Xtreme)
- 2 House seperating wall (2)**
 - Plasterboard with painting (12 mm)
 - Horizontal battens (20 mm)
 - Insulation (90 mm)
 - Vertical trussing and air(20 mm)
 - Insulation (90 mm)
 - Horizontal battens (20 mm)
 - Plasterboard with painting (12 mm)
- 3 Floor construction (360 mm)**
 - Floor finishing (20 mm)
 - Cast-in-place concrete with underfloor heating (30 mm)
 - Hard insulation (35 mm)
 - Hollow core slab floor (200 mm)
 - Hard insulation (75 mm)
- 4 Roof construction (406 mm)**
 - Flat concrete rooftile with solar roof tiles (Solinso)
 - Horizontal and vertical battens (2 x 20 mm)
 - Epdm foil
 - Closed kerto ripa roof with insulation (225 mm + 25 mm) Rc = 7 m2K/W
 - Water resistant dampresistant foil
 - Wooden battens with met EPDM foam joint paint (20 mm)
 - Rockpanel plate material with rockpanel mounting system (12 + 38 mmmm)
- 6 Wooden sliding doors**
 - Window frame size 67 x 138 mm
 - Double sliding door
- 7 Wooden windowframes**
 - Window frame size 67 x 138 mm
- 8 Column**
 - 150 x 150 mm
- 9 Beam**
 - 150 x 180 mm
- 10 Bear-on cam**
 - (Oplegnok) hollow core slab floor h.o.h 800 mm

LOCATION



CONSTRUCTION

