

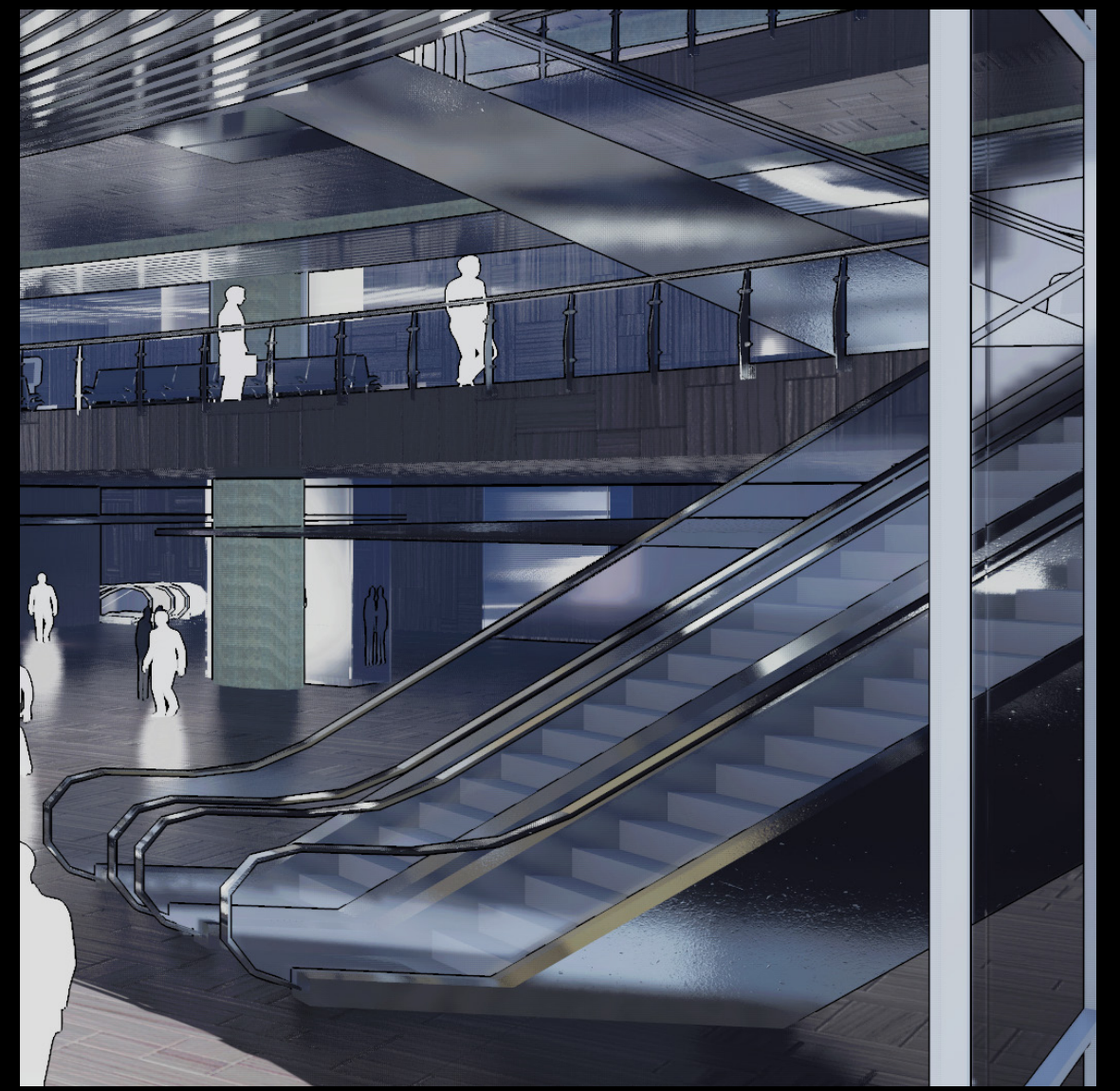
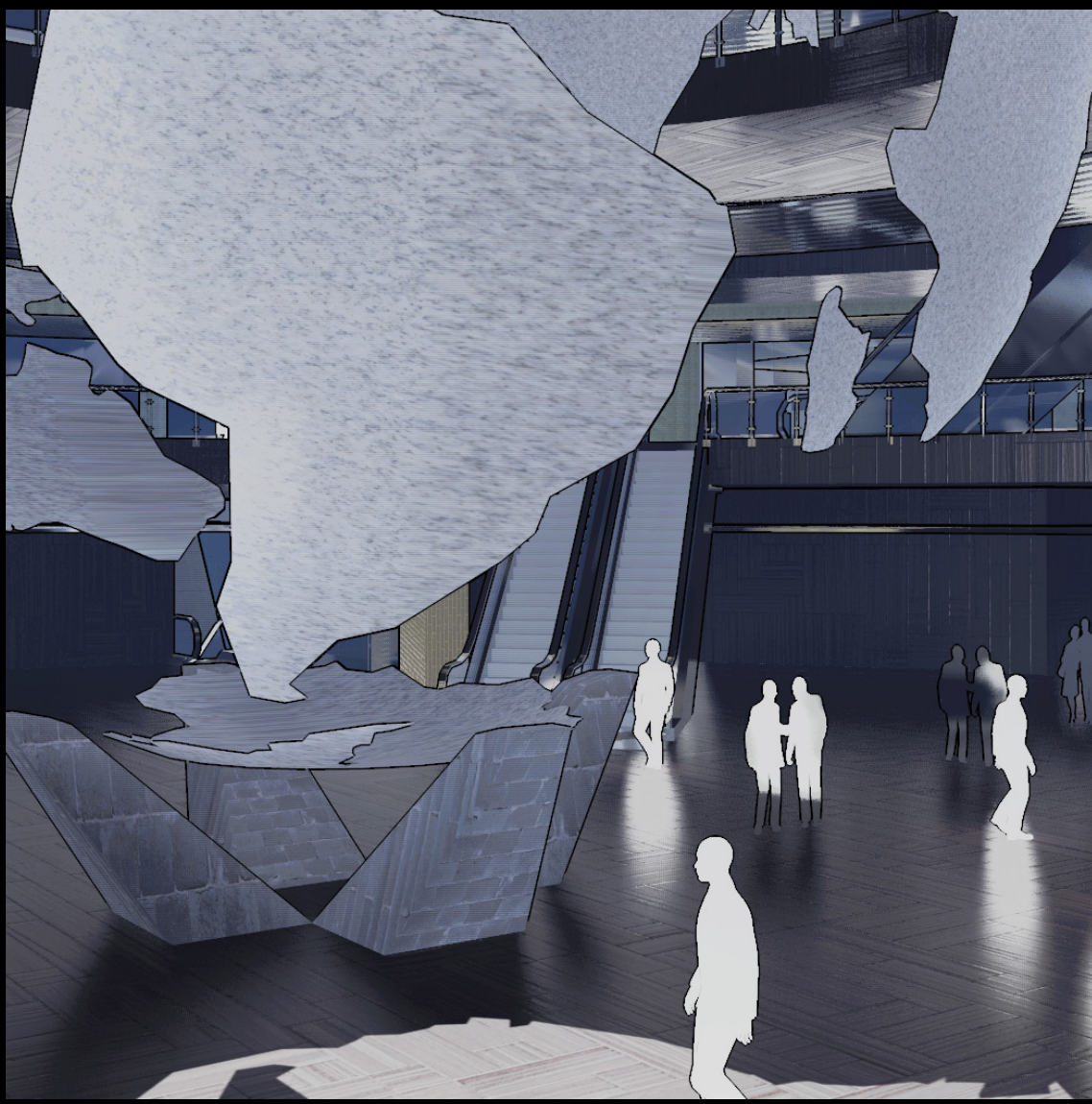
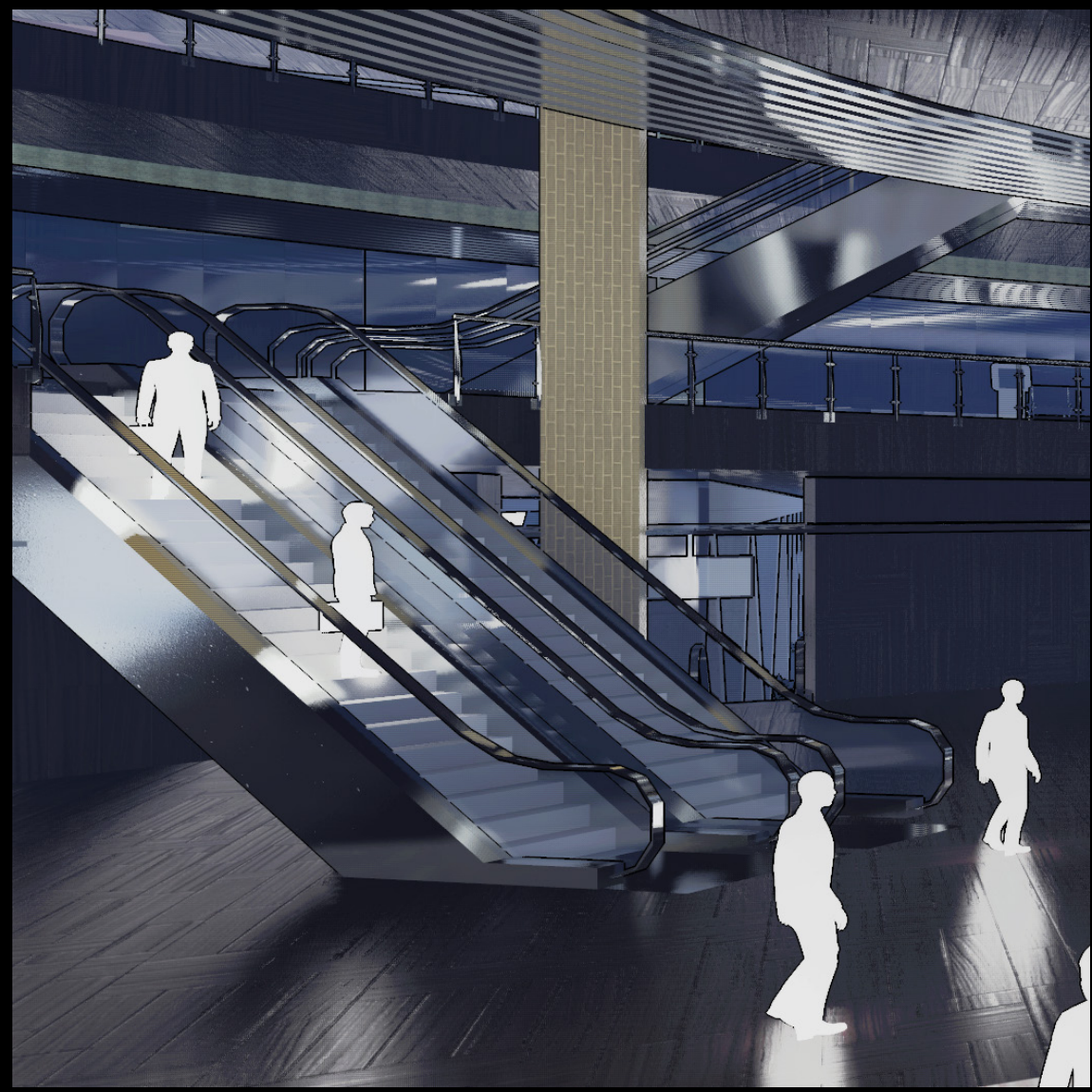
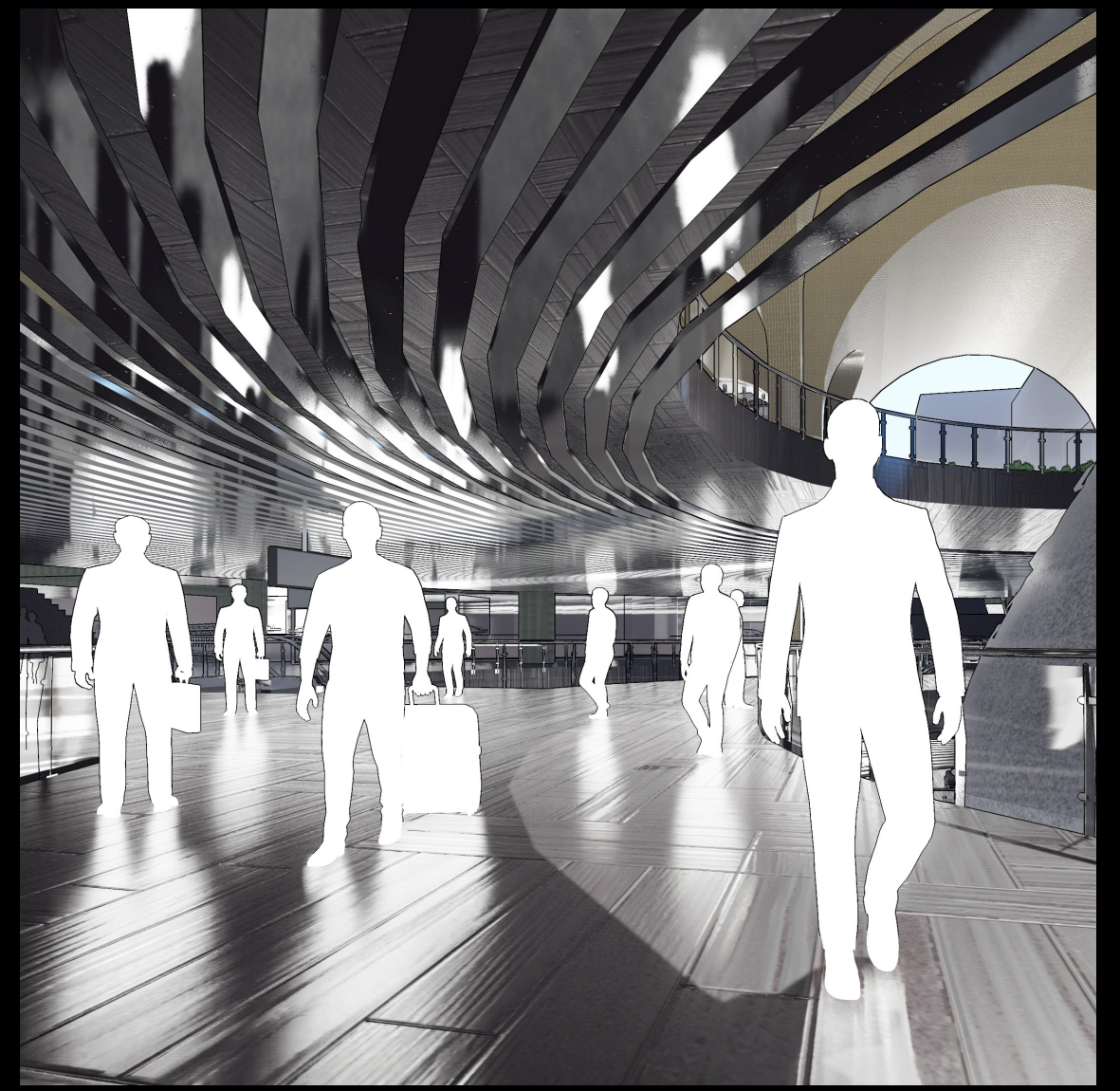
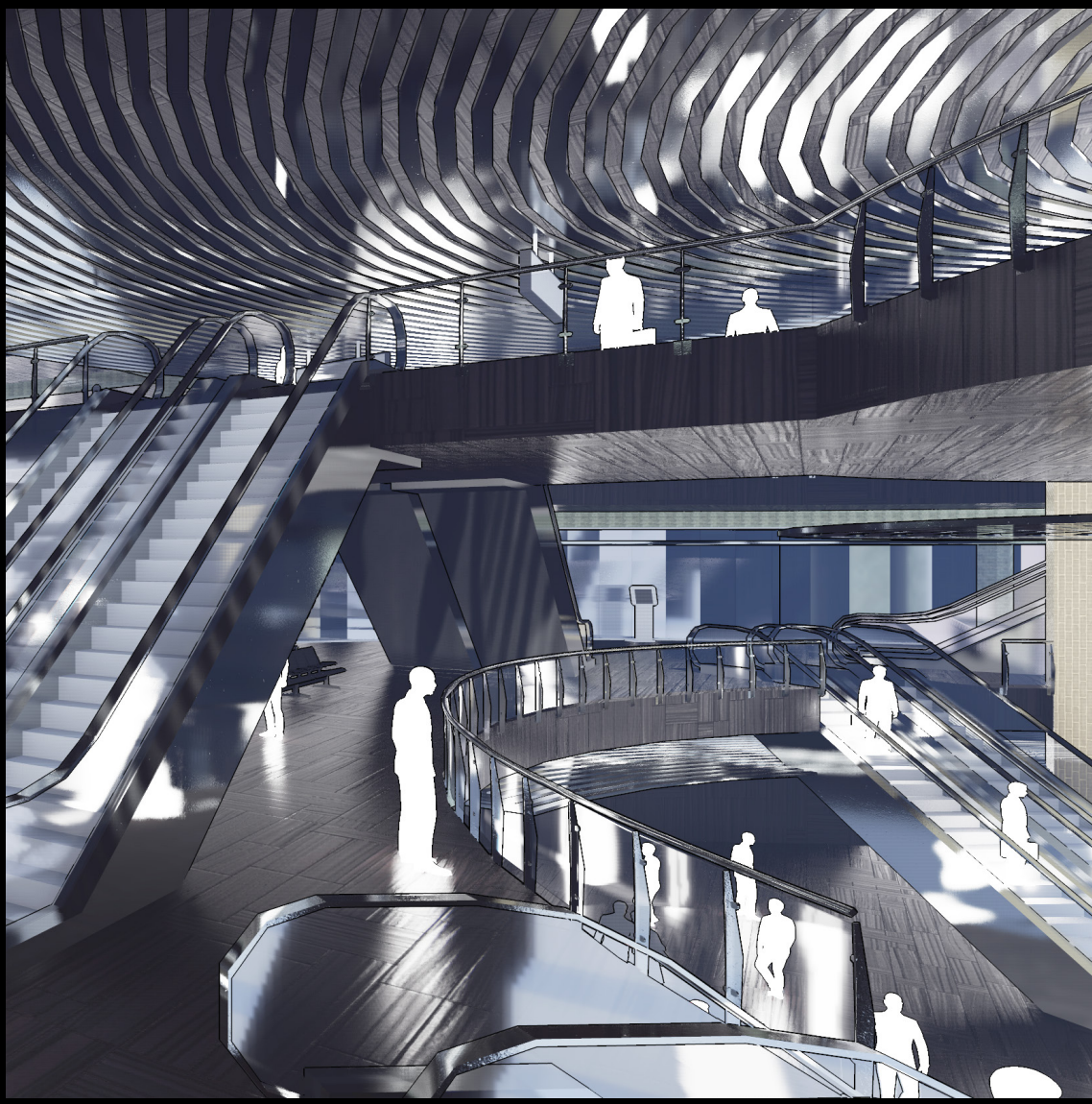
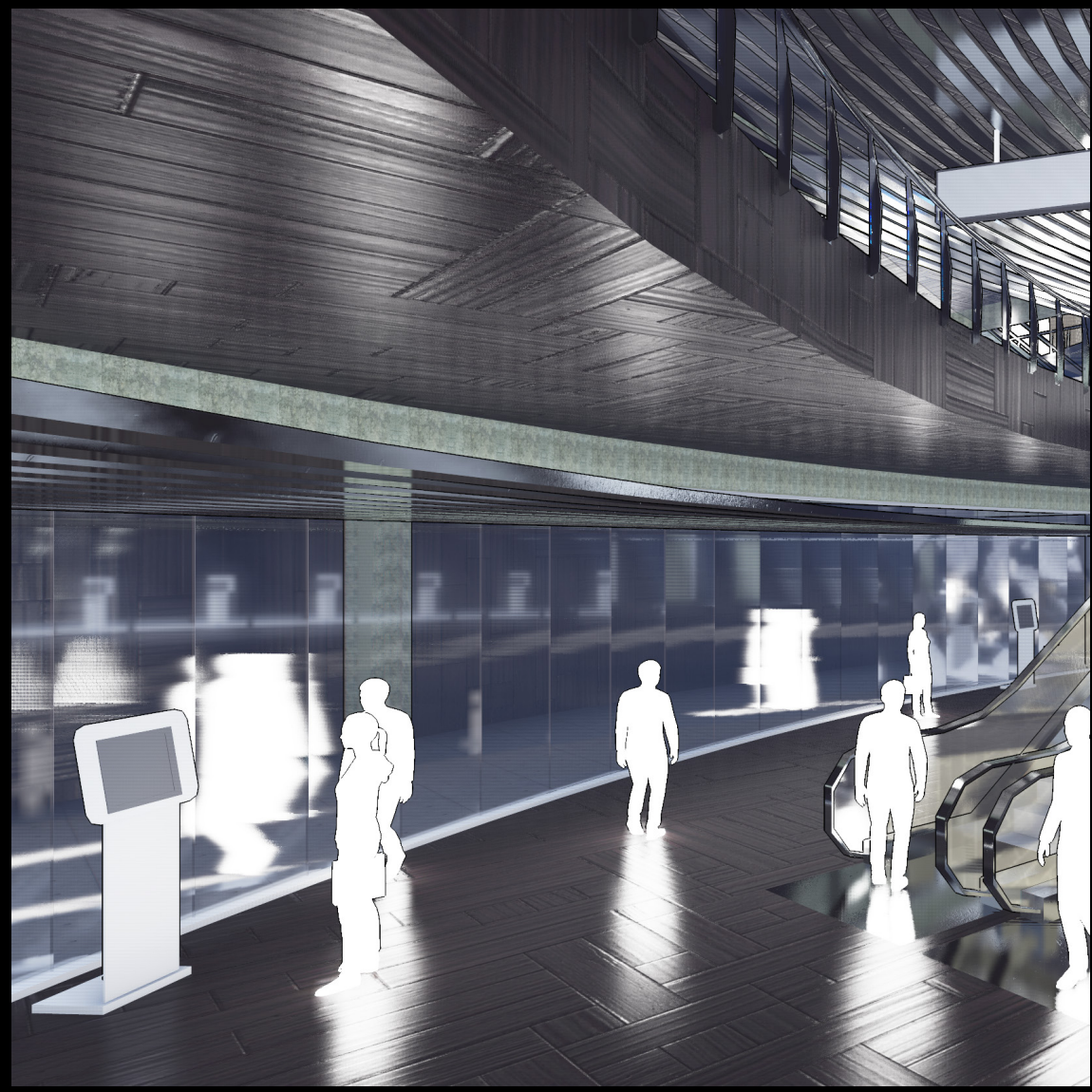
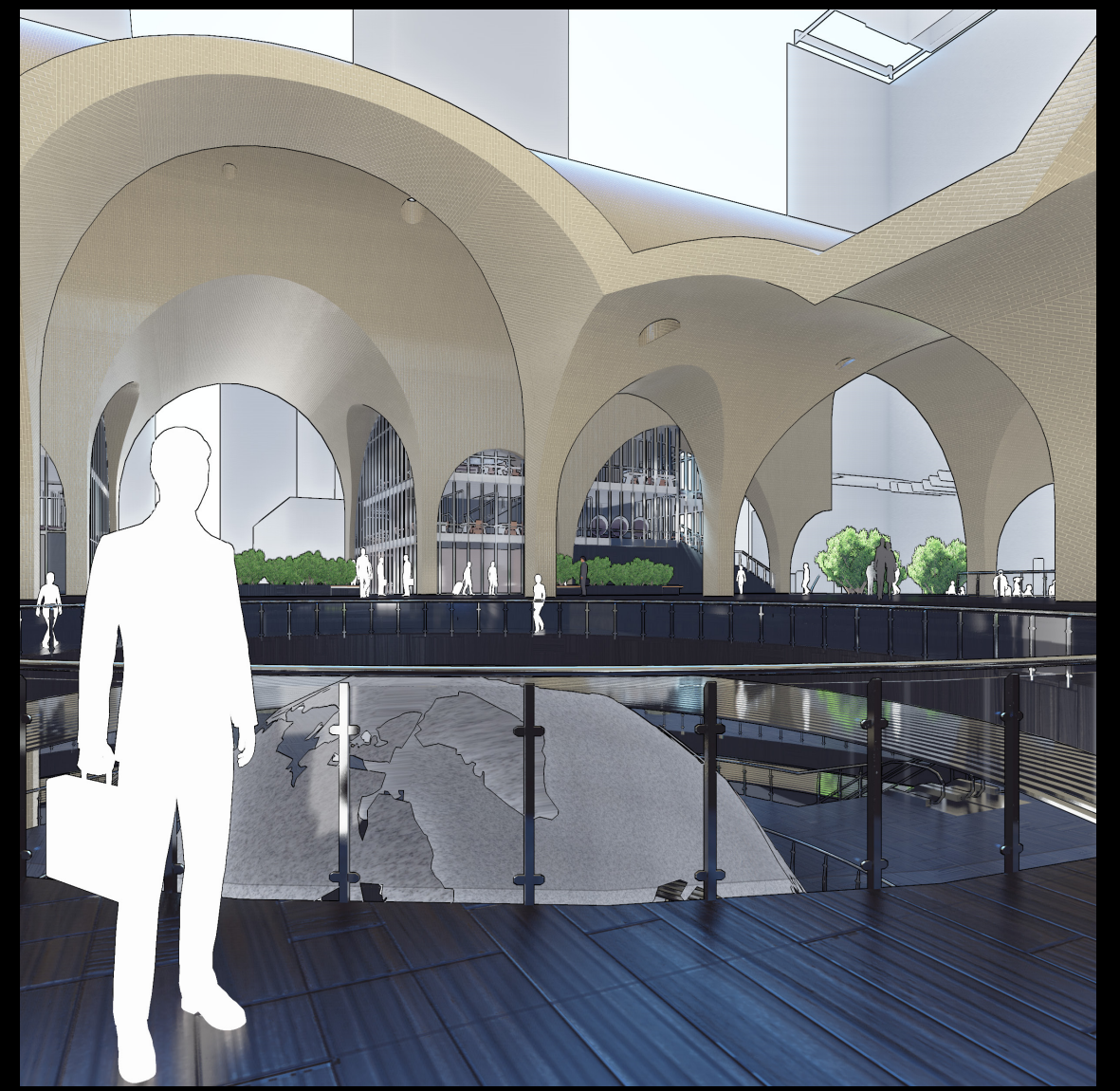
TRANSITION TRADE TERMINAL

FRONTDOOR OF AMSTERDAM

ELDIEN KUIJENDIJK





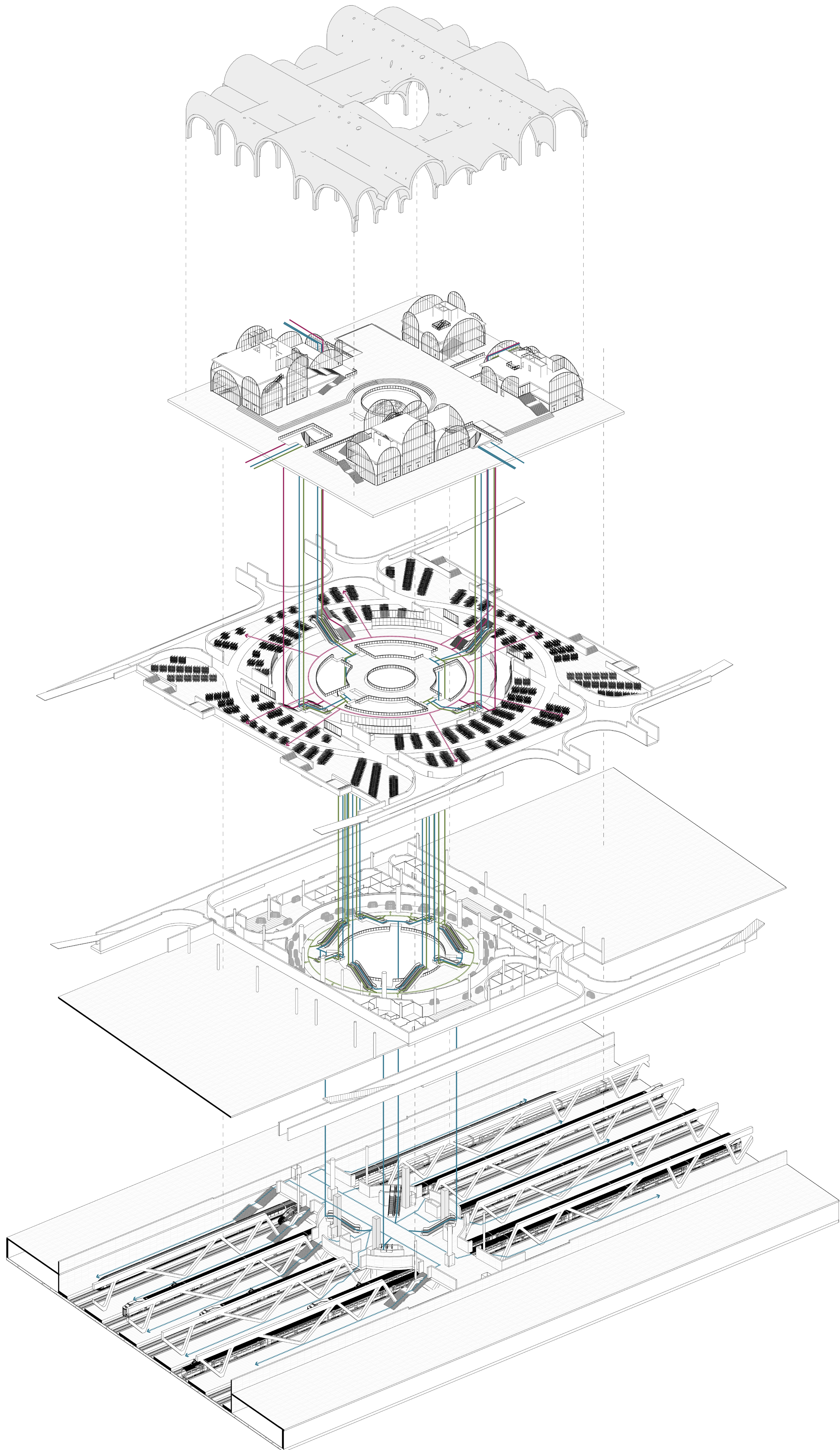




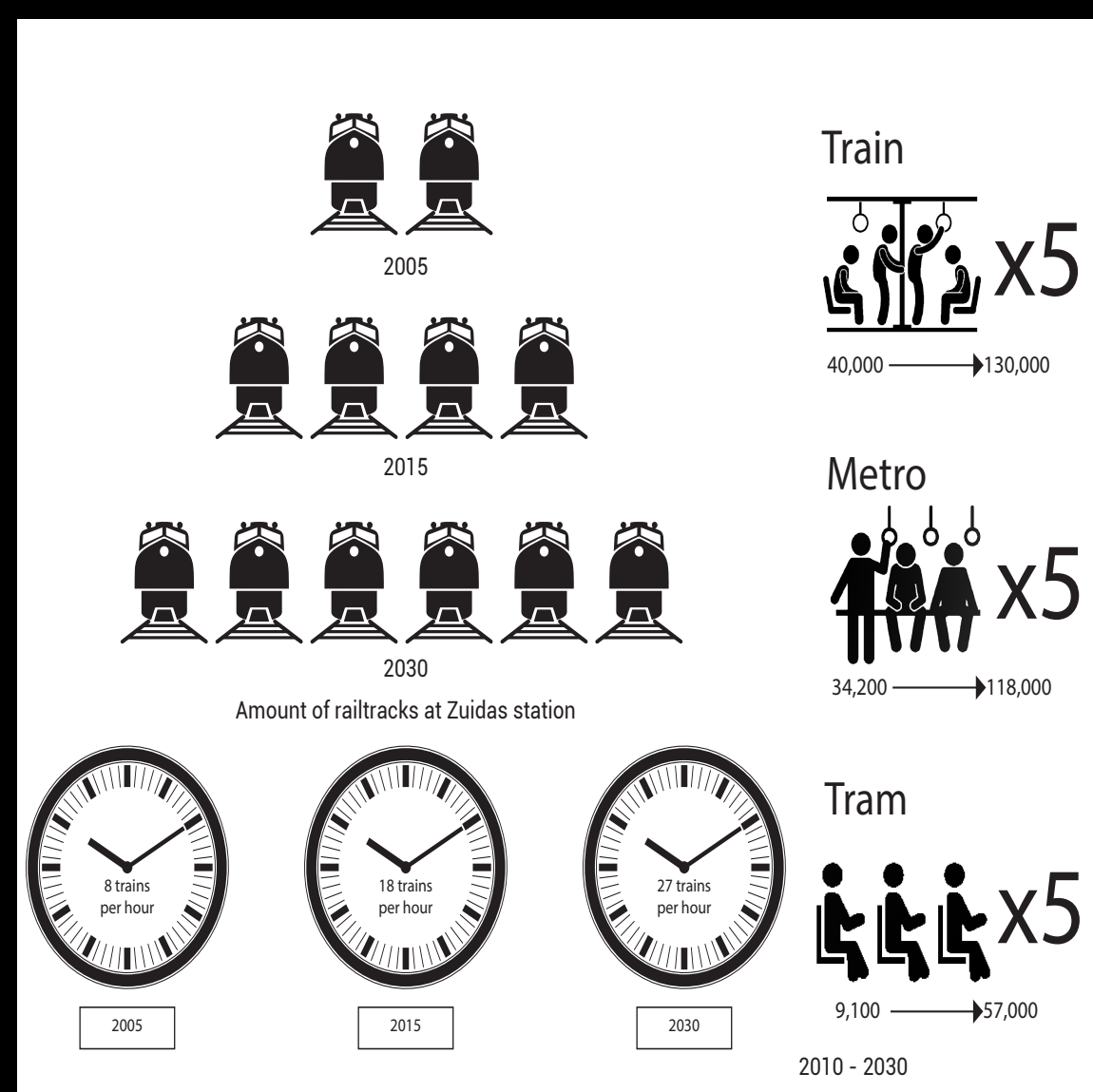
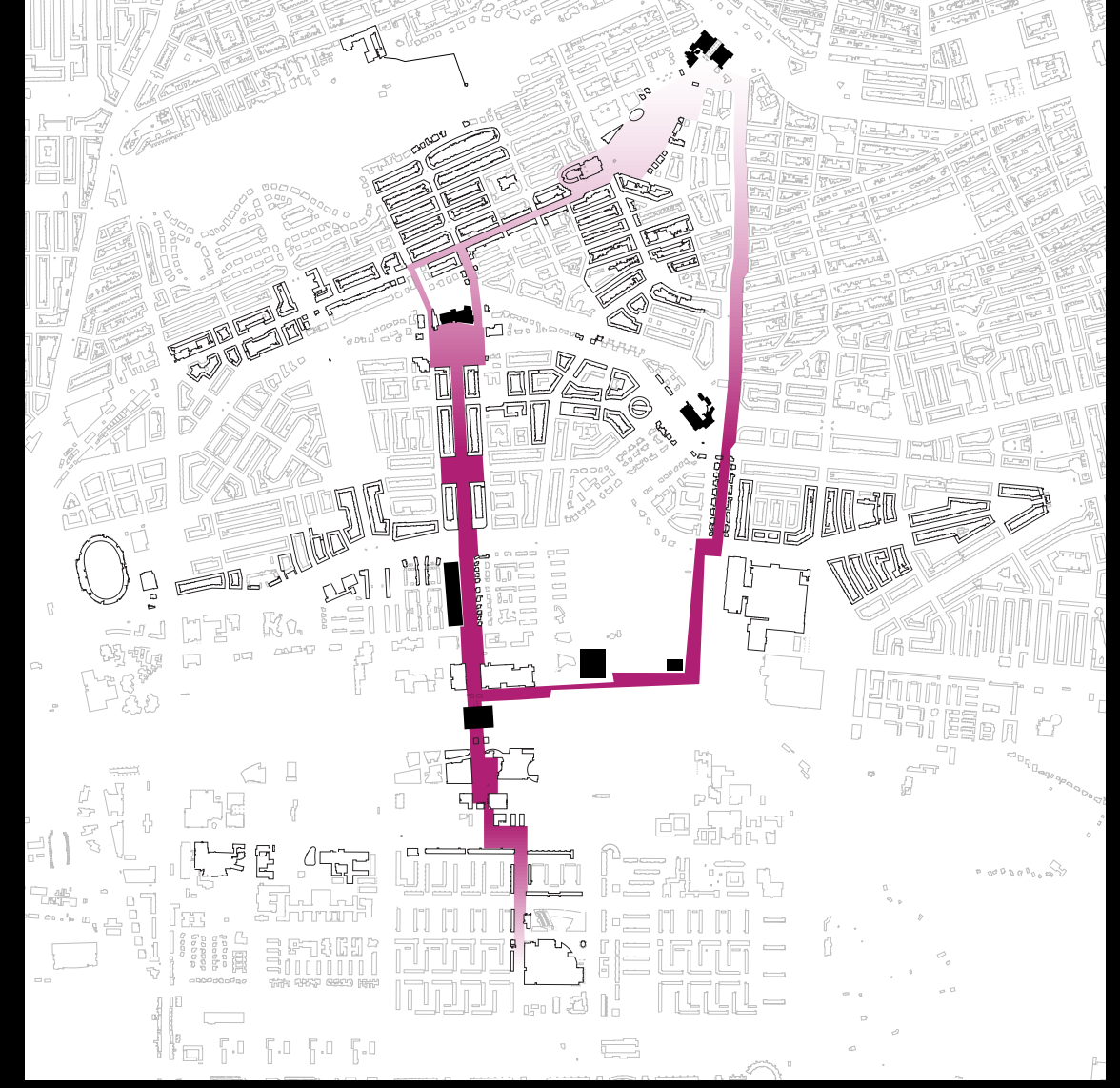
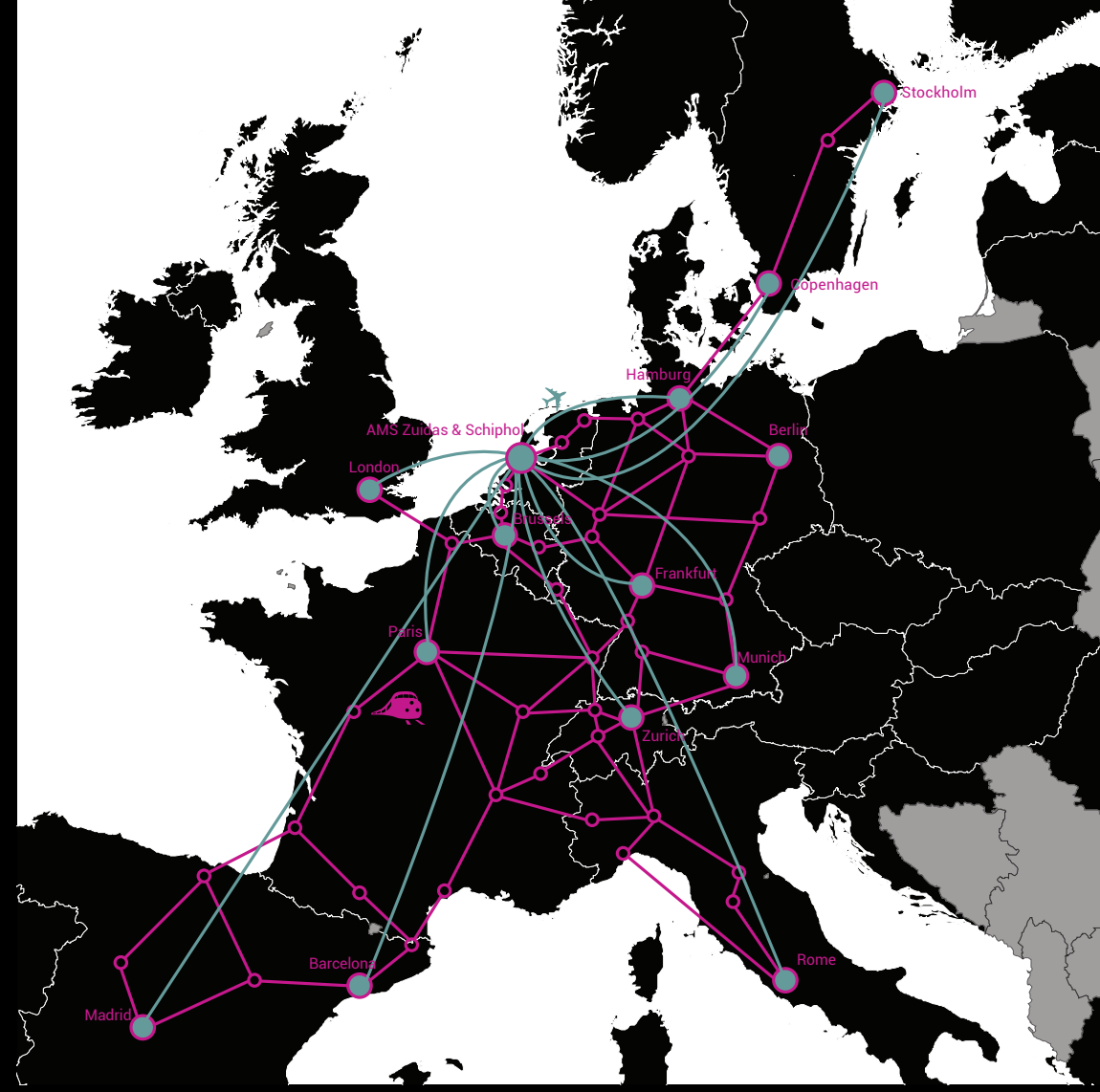
TRANSITION TRADE TERMINAL

FRONTDOOR OF AMSTERDAM

ELDIN GELDENHUYS







### T & T TERMINAL

FRONTDOOR OF AMSTERDAM

ELDIN GELDENHUYS  
2018 / 2019

THE ZUIDAS, LOCATED BETWEEN SCHIPHOL, THE 4TH LARGEST AIRPORT OF EUROPE, AND THE CITY CENTRE OF AMSTERDAM REPRESENTS THE PERFECT EXAMPLE OF A GLOBAL BUSINESS LOCATION. ZUIDAS CATERES INSOLENTLY FOR ALL CRITERIA SET OUT ARE GARDING THE LOCATION OF A MAJOR PROPERTY INVESTMENT WELL PLACED TO BE CONNECTED BY ALL MODES OF TRANSPORT TO ANY DESTINATION ON THE PLANET NOT WITH STANDING ITS EMBEDDED WITHIN THE CULTURE OF A SMALL HISTORICAL TOWN. A DRIVING FORCE BEING HUGE YEAR-ON-YEAR INCREASE OF EMPLOYEES AND INHABITANTS. THE ZUIDAS STATION IS THE FASTEST GROWING RAILWAY STATION IN THE NETHERLANDS WITH THE LONG AWAITED ARRIVAL OF THE NORTH-SOUTH RAIL LINE DUE IN 2018. SUSTAINING GROWTH IN TRAIN TRAFFIC ON THE SCHIPHOL-AMSTERDAM-ALMERE ROUTE IS EXPERIENCED WHILE MORE THAN 200,000 PASSENGERS ARE EXPECTED TO MAKE A DAILY RETURN TRIP.

THIS NEW GLOBAL DISTRICT WILL ACT AS THE NEW FRONT DOOR TO THE CITY OF AMSTERDAM. WELCOMING TOURISTS, CITIZENS AND BUSINESS MEN AND WOMEN. YET THE TRAIN STATION WHICH IS LOCATED WITHIN THE ZUIDAS DOES NOT HAVE THE ABILITY TO FUNCTION AS SUCH A TRANSITION POINT. NOR DOES IT ARCHITECTURALLY ILLUMINATE THIS GATEWAY TO THE CITY. THUS THE STARTED QUESTION IS WHAT DOES THE ZUIDAS STATION NEED TO BECOME TO BE THE NEXT GLOBAL MOBILITY NODE OF EUROPE?

THE MAIN GOAL OF MY GRADUATION PROJECT WAS TO CREATE AN INFRASTRUCTURAL NODE WITHIN THE ZUIDAS WHICH ACTS AS A TRANSITION POINT ON A LOCAL, DISTRICT AND NATIONAL LEVEL. ALONGSIDE THIS I AIMED TO DESIGN AN ARCHITECTURAL GESTURE THAT ILLUMINATES THE LOCAL AND GLOBAL COMMUNITY WITHIN THE ZUIDAS. THE MAIN BUILDING PRINCIPLES FOCUS ON CONNECTIVITY, CULTURAL UNITY AND CREATING A REFERENCE POINT WITHIN THE URBAN DISTRICT. THE DESIGN COULD BE DIVIDE INTO TWO SECTIONS: TRADE AND TRAVEL. THE TRADE FUNCTION IS LOCATED ON TOP OF THE INFRASTRUCTURE. THIS GIVING TRAVELERS A DIRECT TRANSITION POINT BETWEEN VARIOUS TYPES OF TRANSPORTATIONAL SYSTEMS AND A LOCAL AREA FOR TRAVELLERS AND BUSINESS MEN AND WOMEN TO WORK.

