

**THE JOURNEY OF
THE UNHEARD VOICES**

// a home for women in Madrid

DOCUMENTING THE SITE.

The Independent Group 2023
Alexandra Diephuis de Bustamante

Research mentor | Mark Pimlott
Design mentor | Daniel Rosbottom
Building technology mentor | Koen Mulder

INDEX//

7	ELEMENTS OF MADRID
31	THE NEIGHBOURHOOD
45	THE SITE
73	PUBLIC SPACES OF MADRID
105	APARTMENT IN MADRID
123	MATERIALIZATION
129	TRADITION AND THE SENSE OF FAMILIARITY
137	CONCLUSIONS

ELEMENTS OF MADRID

City of Madrid. Region of Madrid in Spain.





The use of squares - going to the terrace to socialize.







The use of squares and parks - The bench becomes an important public element for many people to meet and relax without having to consume.



Traditional elements from the facade - sun shading







Traditional elements from the facade - the "persianas alicantinas" sun shading is the most traditional one, having a very simple system and being easy to replace and repair. They are either made of wood or plastic slats.



Traditional elements from the facade - Balconies as the only private exterior space for most apartments. By regulation the current maximum width is 45cm but the new urban regulation will expand it to 75cm.







New elements from the facade - Side effect of modernisation, increasing temperatures, and the lack of planning in the design to incorporate ACs.



Traditional elements from the facade -The ground floor of the building tends to have a commercial use.







If it doesn't have a commercial use, windows tend to have iron bars for security.





Traditional materials of the facade - the plint is in most cases made of some type of rock. The rest of the facade is either plastered or made of bricks.





The first threshold - normally it consists of a hall where the post boxes are placed, and it connects the street with the interior patio and the staircases to the apartments. Traditional materials in these spaces are tiles, marble, and wood elements such as doors or railings.

THE NEIGHBOURHOOD

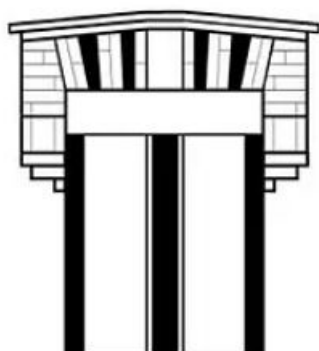
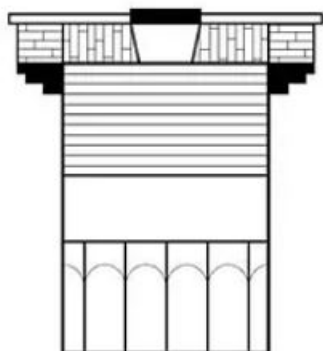
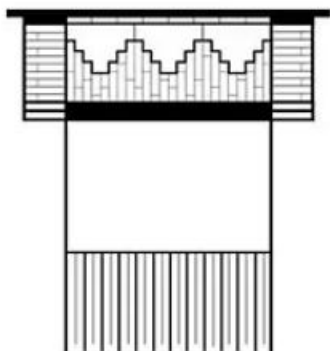
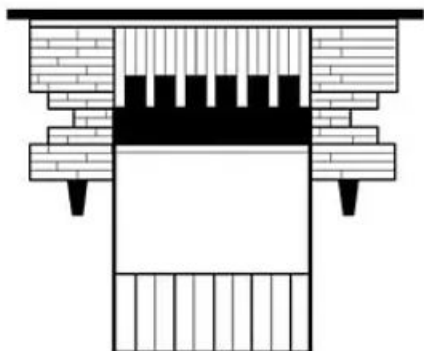
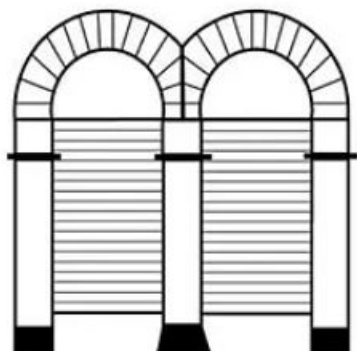
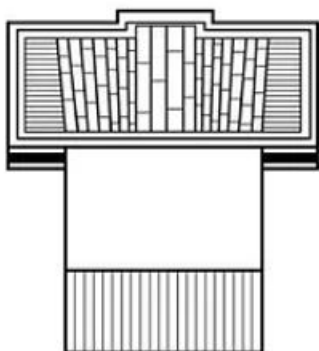
District of Tetuán. Sector of Cuatro Caminos.







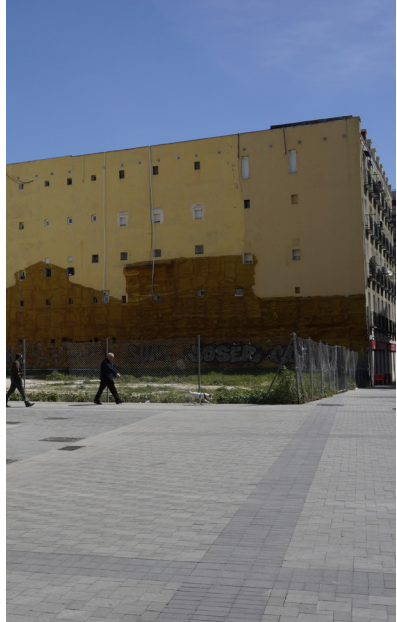
The Neo-mudejar architecture style as a unique style from Spain. Most neomudejar buildings in Madrid are protected, however in the area of Tetuán due to their workers origin are being left unprotected and vulnerable to gentrification.





Neglection of its protected heritage.







Many empty plots in the neighbourhood due to speculation



Old small independent shops, giving a sense of small town in the big city.



THE SITE





Contrast between the empty plot and the surroundings







3













The original street remains intact on the empty plot





Sporadic encounters between neighbours thanks to their dogs.



Some neighbours still try to take care of the place.





The surroundings of the two protected historical buildings are filled with trash and rubble.



Some invasive species of trees managed to grow among in this environment.





The front facade already shows the deterioration of the construction.



The back has been inhabited but there are signs that has been a fire in the interior of the building, making it unstable and dangerous to live in.



Some invasive species of trees managed to grow among in this environment.















PUBLIC SPACES OF MADRID
- SQUARES AND GARDENS -



PLAZA DE CHUECA

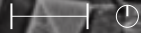


M. ENL@

PEDESTRIAN

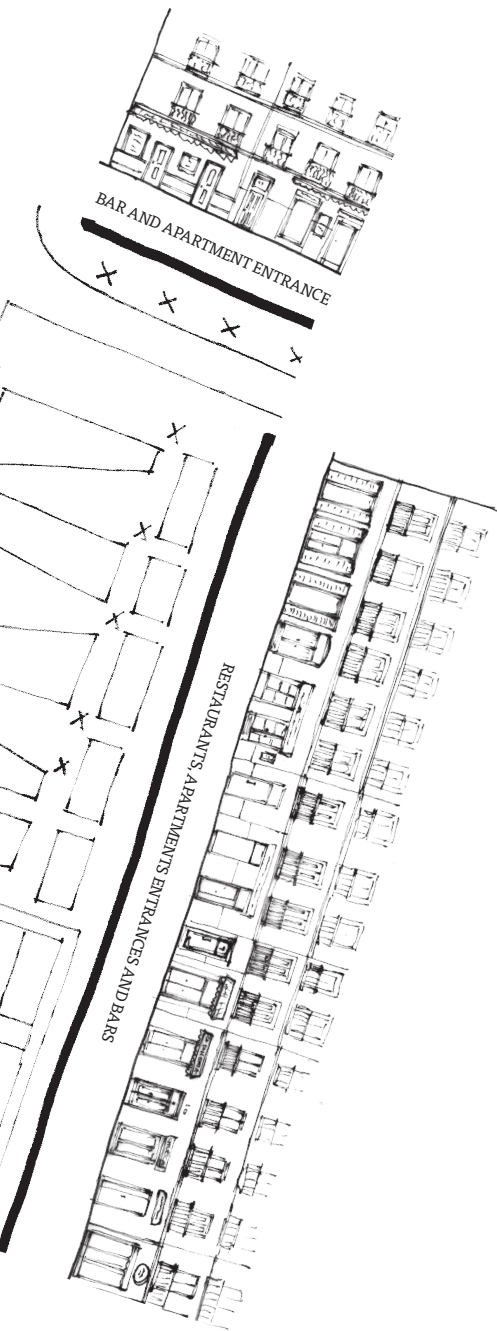


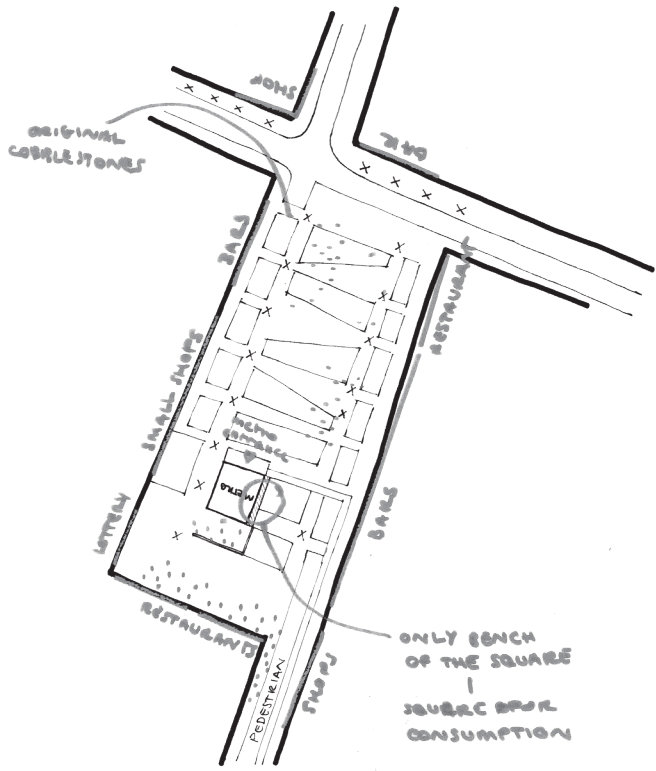
0 250

A scale bar and a north arrow are located in the bottom right corner of the image. The scale bar is a horizontal line with a vertical tick mark at the left end, labeled '0' and '250'. The north arrow is a circle with a vertical line through the center and a small circle at the top.



- ▨ BENCH
- FENCE
- WALL
- FACADES
- FUNCTIONS
- x TREES
- DIFFERENCE IN FLOOR MATERIALIZATION







PLAZA DEL DOS DE MAYO



PEDESTRIAN

PEDESTRIAN

FESTIVAL





BOOKSHOP, APARTMENTS ENTRANCES AND PHARMACY



CAFE, APARTMENTS ENTRANCES AND TAPAS BAR



MAIN ENTRANCE TO GOVERNMENT BUILDING



BACK WALL OF A CHURCH

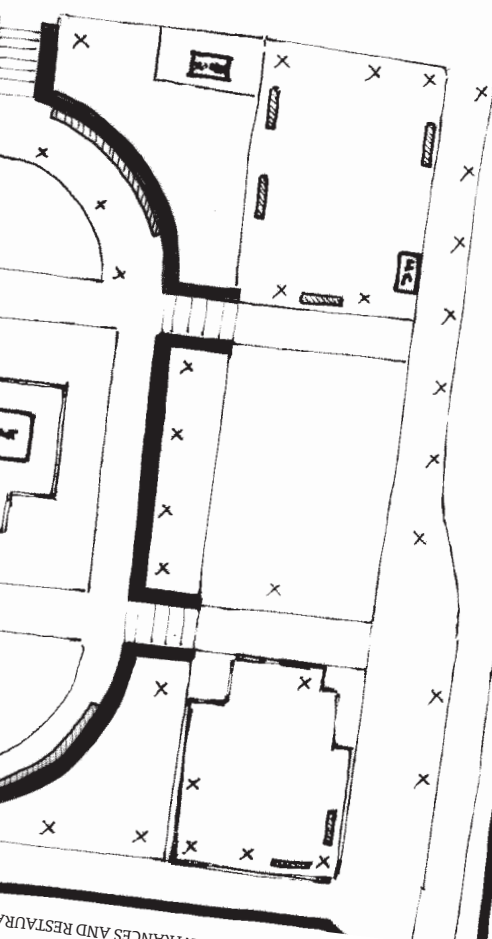
- BENCH
- FENCE
- WALL
- FACADES
- FUNCTIONS
- TREES
- DIFFERENCE IN FLOOR MATERIALIZATION



STAIRS



APARTMENTS ENTRANCES AND RESTAURANTS



APARTMENTS ENTRANCES AND RESTAURANTS

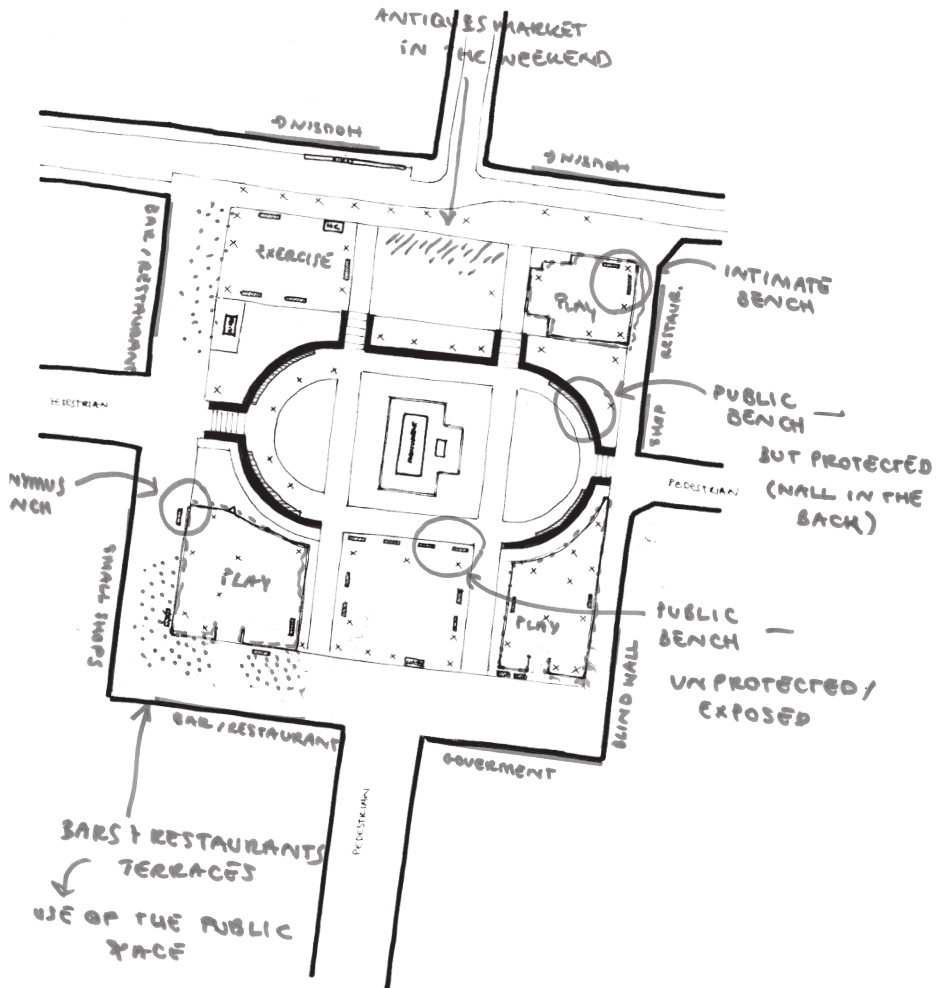


APARTMENTS ENTRANCES AND A BAR



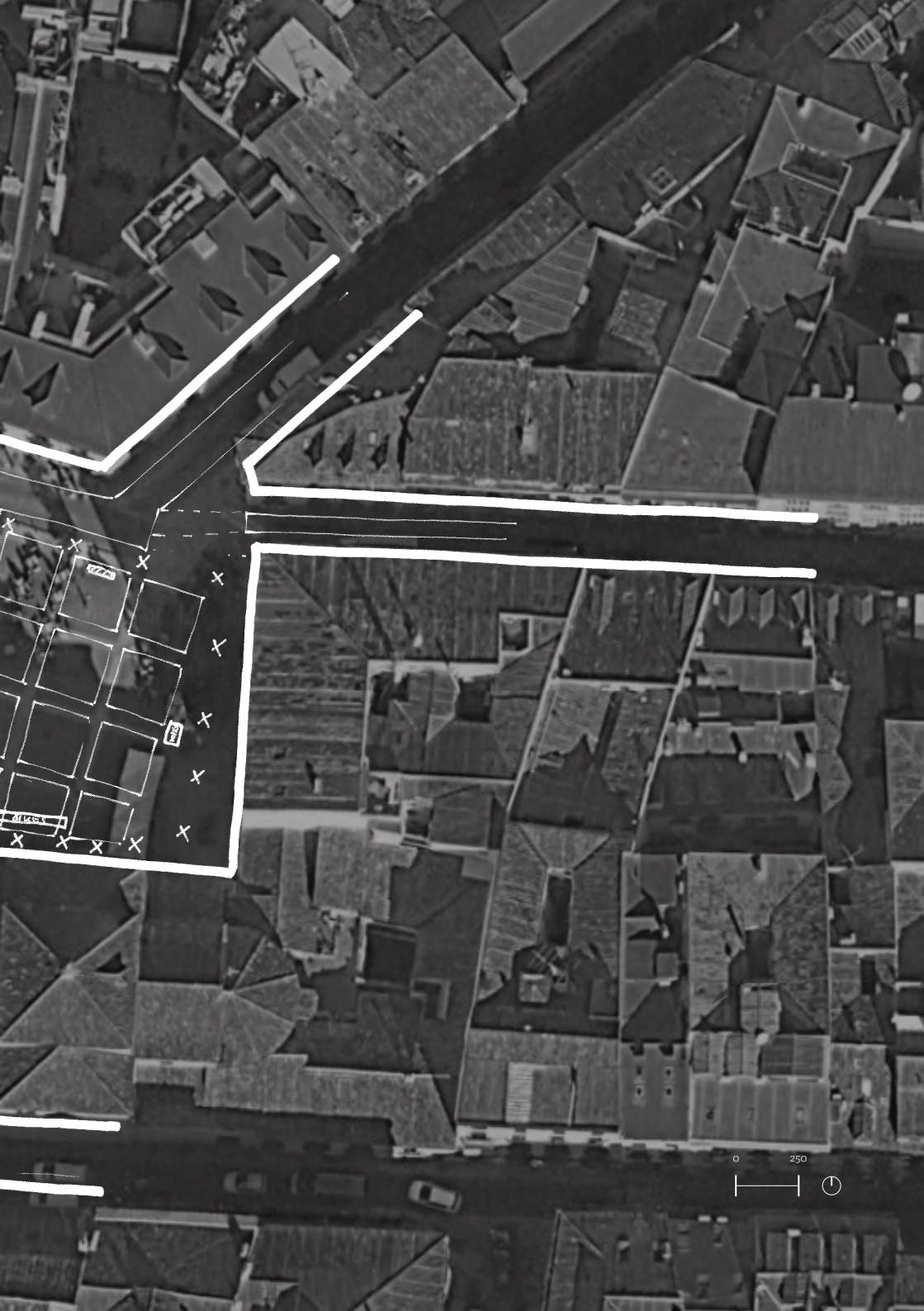
APARTMENTS ENTRANCES A BAR AND A SHOP



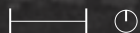


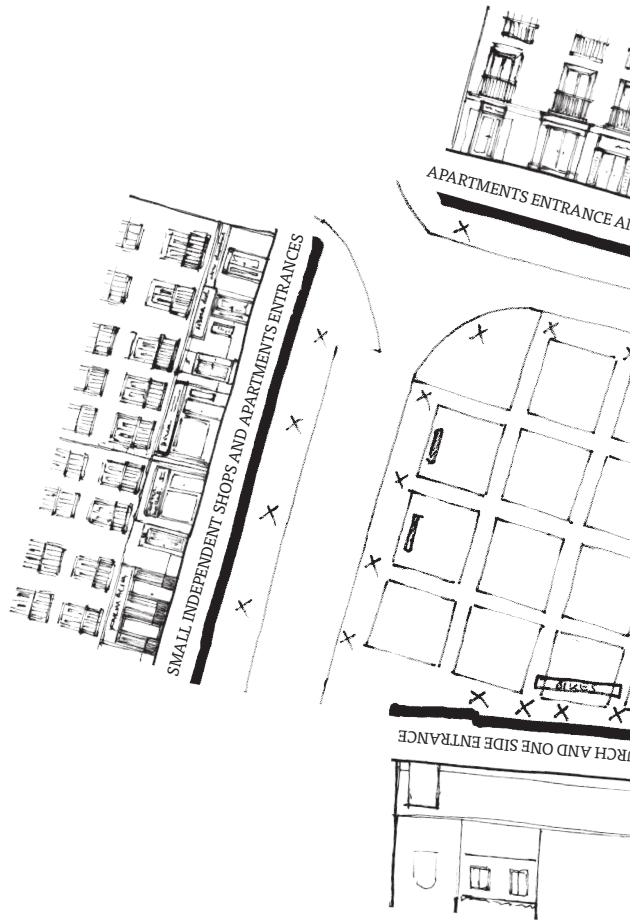
PLAZA DE SAN ILDEFONSO





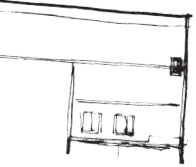
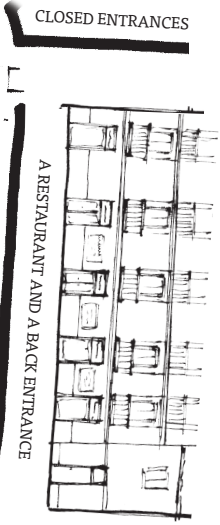
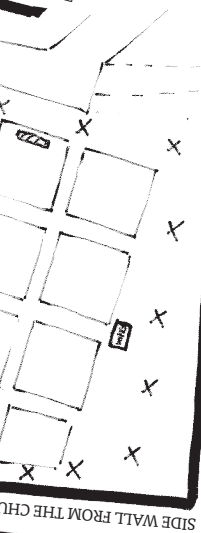


0 250

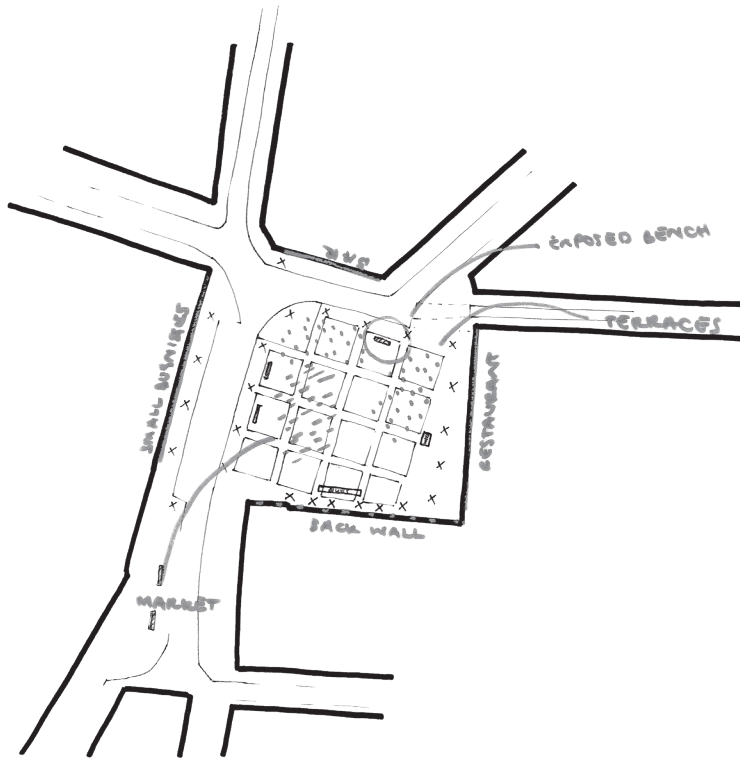




-  BENCH
-  FENCE
-  WALL
-  FACADES
-  FUNCTIONS
-  TREES
-  DIFFERENCE IN FLOOR MATERIALIZATION



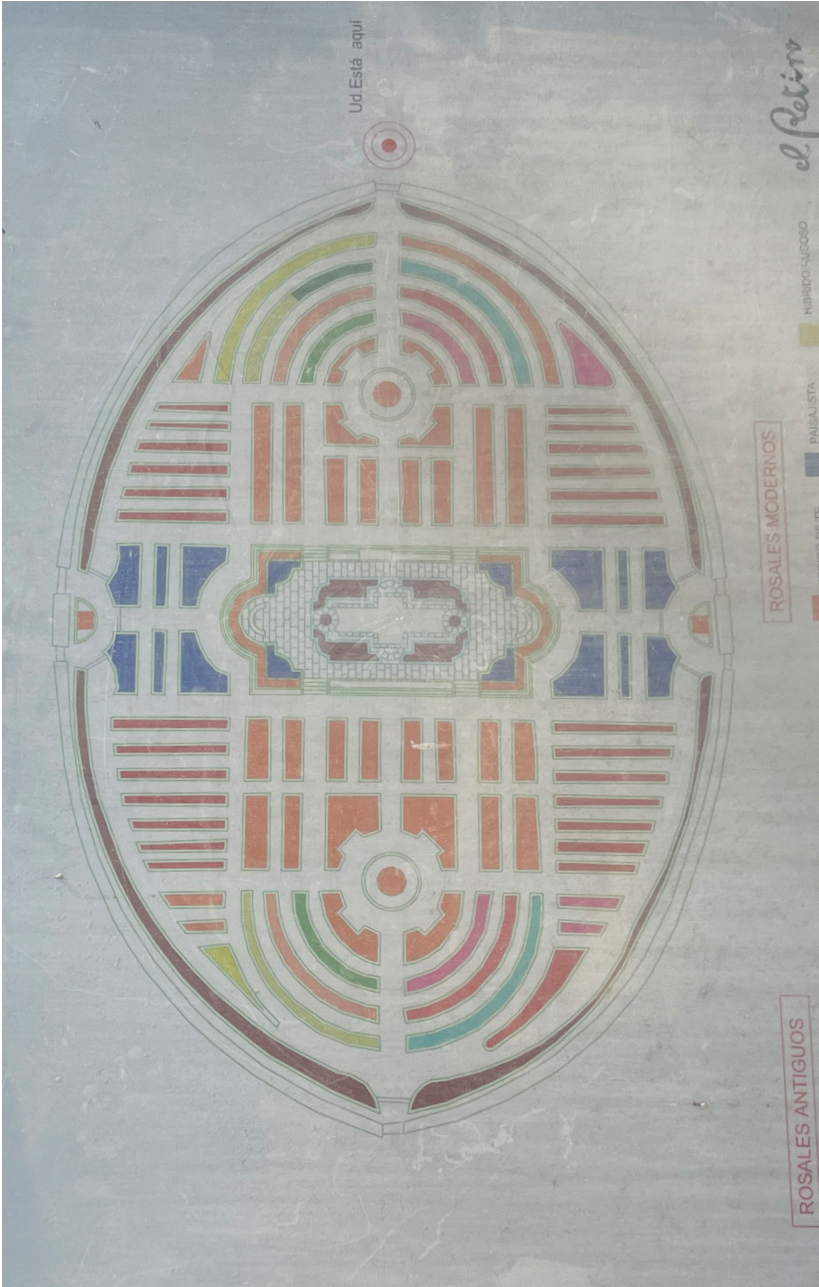




JARDÍN DE CECILIO RODRIGUEZ (LA ROSADELA)









JARDÍN DE PRINCIPE DE ANGLONA





o

250







Squares and gardens are public places of socialization.

While the most common typology in Madrid are squares, we can also find some gardens. These were either placed inside parks, like Cecilio Rodriguez garden located in el Retiro, or they belonged to an old palace or villa like Principe de Anglona Garden, which belonged to the Spanish court of the XVIII century.

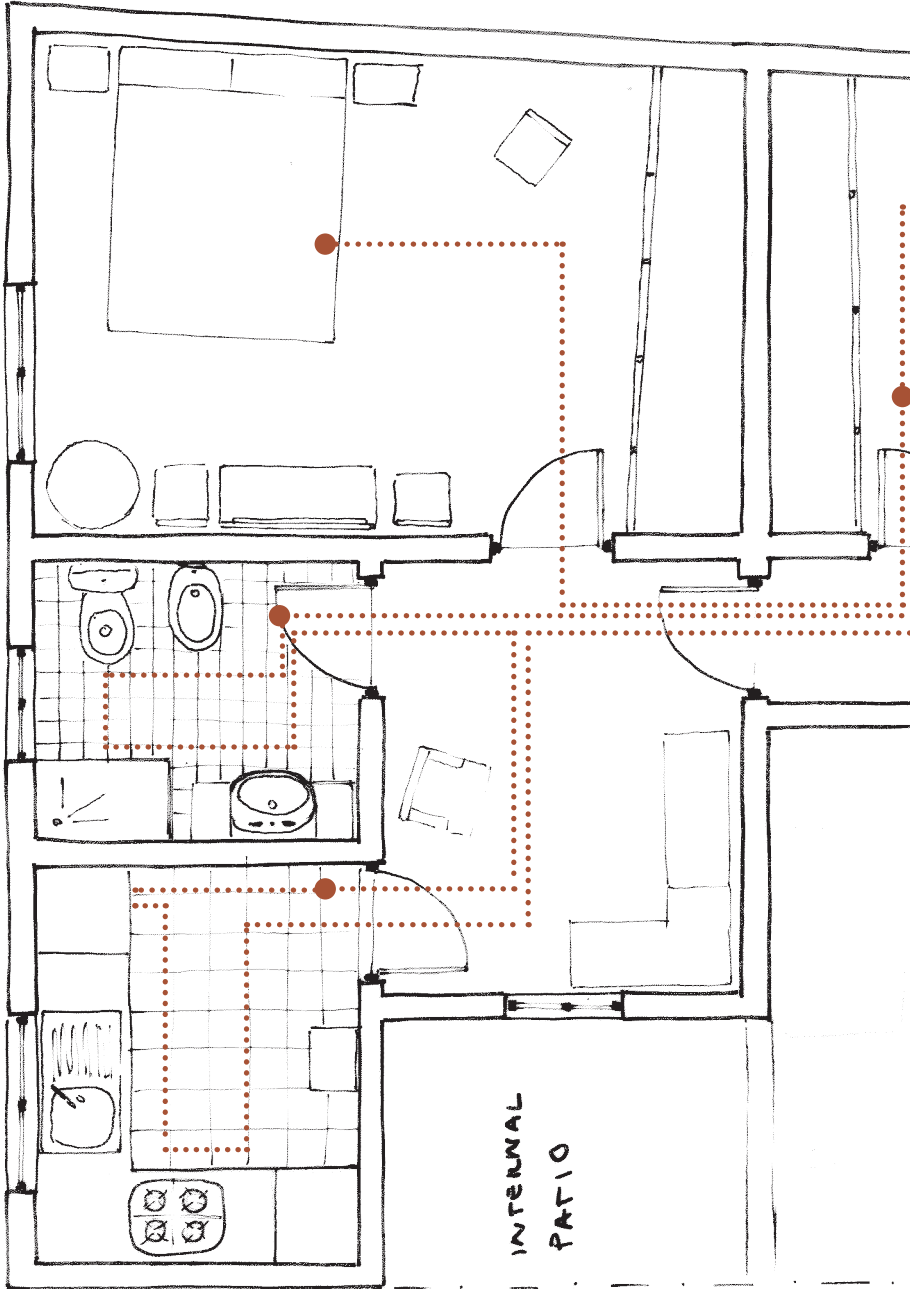
These gardens are walled or fenced and they have a restricted timetable to visit them. They become spaces of intimacy, rest and reflection. Because of their introvert nature not many people know about them.

On the other hand, squares become places of sociability, where consumption, play, exercise or conversation occurs. They are normally surrounded by apartment buildings, bars, restaurants, cafes, shops, etc. And they are big enough to host markets and/or street vendors.

From the analysed squares, Plaza del Dos de Mayo might be the most interesting one. Offering a large variety of space for any type of public interaction. It offers intimate spaces, protected playgrounds for kids, exercise street moviliarity, open and spacious areas, and.....

APARTMENT IN MADRID

Two bedroom apartment of 59m² located in Doctor Santero St, in the neighbourhood of Tetuán. Built in 1925, it has a common Madrid apartment floor plan and a typical interior design from a middle class household.

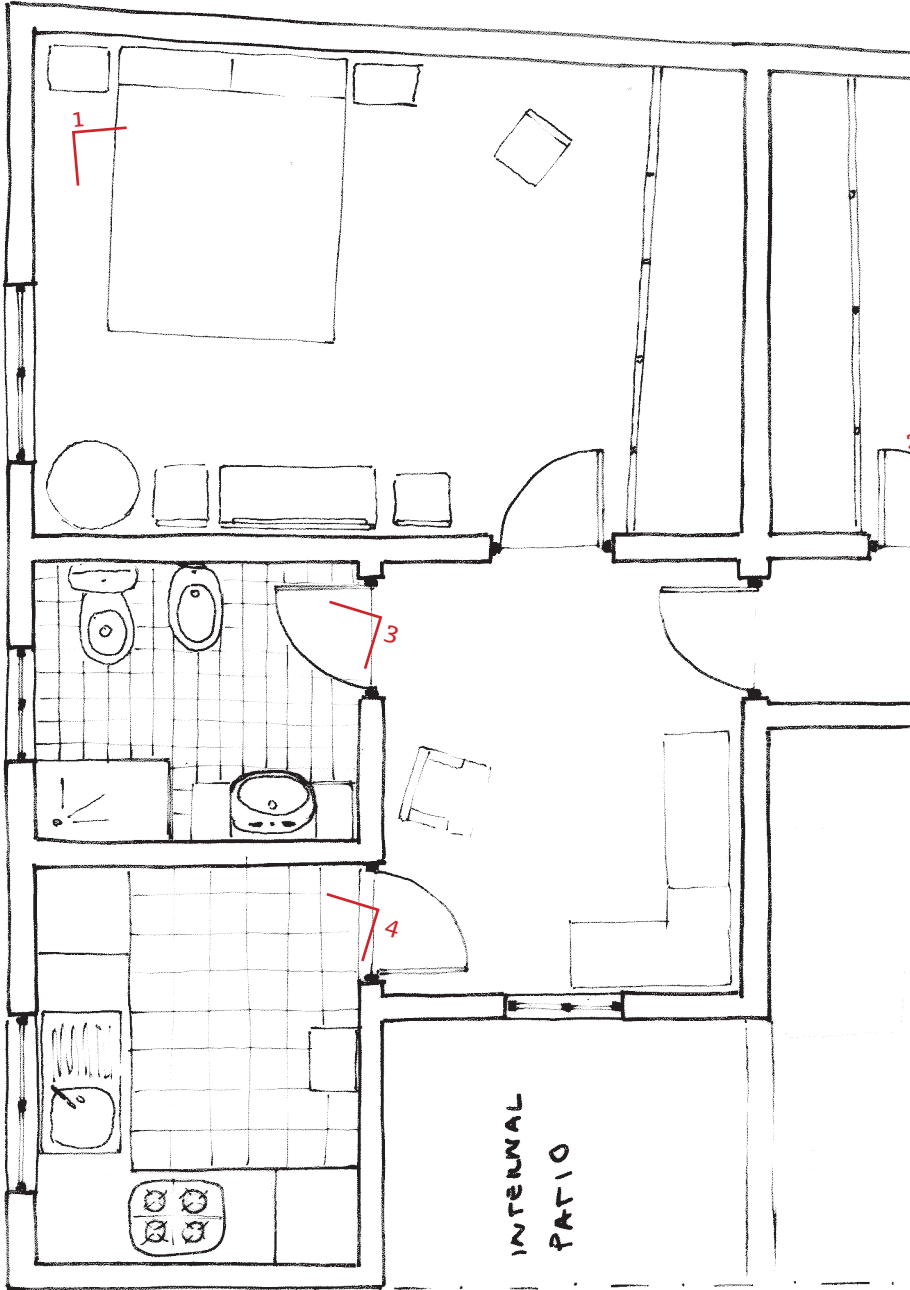


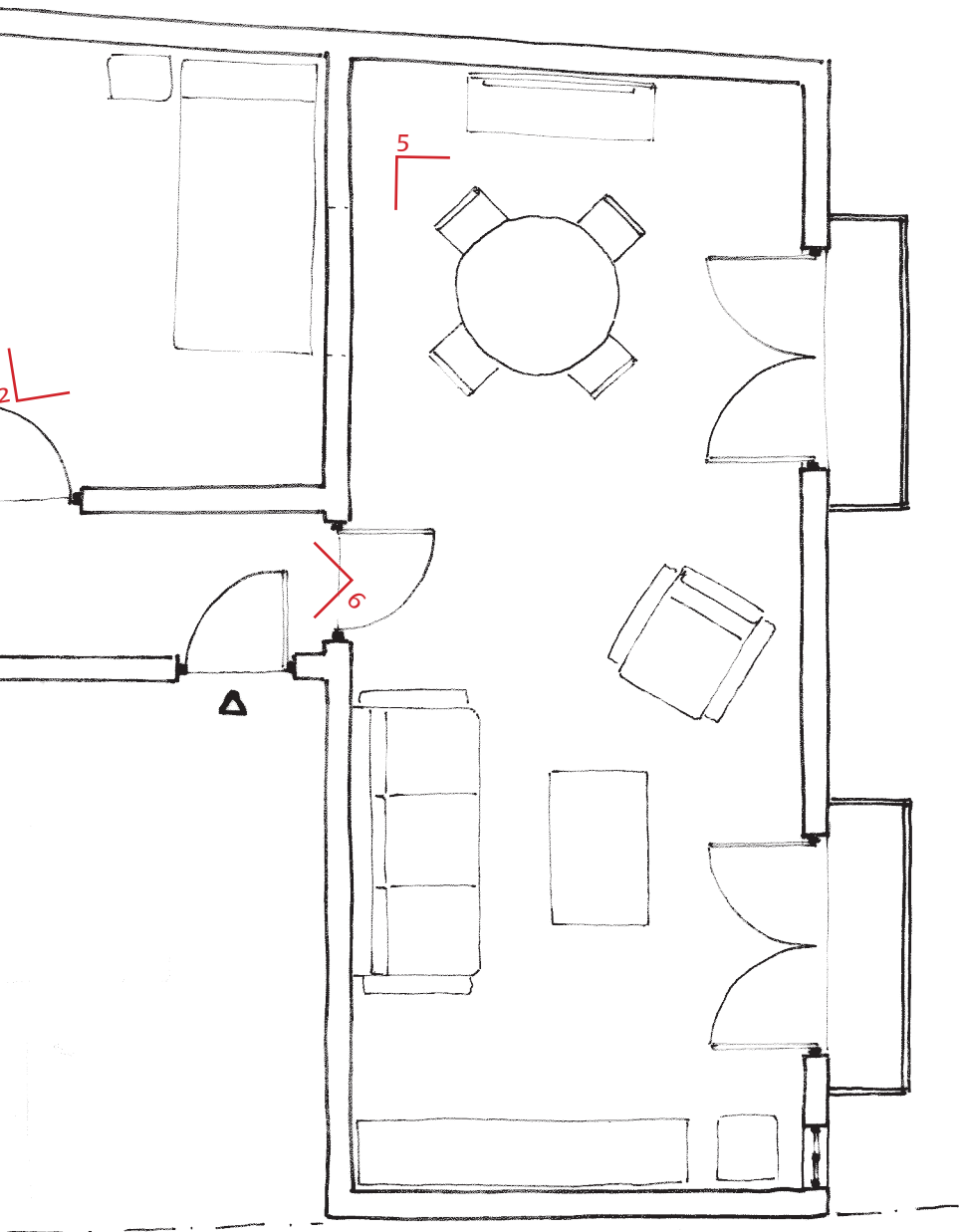
DIFFERENT MOMENTS OF A MOTHERS MORNING ROUTINE THROUGHOUT THE HOUSE

(simplified and probably slightly idealized version)

- Waking up and dressing up.
- Waking her children up.
- Going to the toilet, washing her face and teeth and get ready for the day.
- Going to the kitchen and prepare breakfast for her kids.
- Bringing breakfast to the dining room while calling her kids.
- Water her plants while her kids have breakfast.
- Picking up her kids coats and backpacks and leaving for school.

Typical interior of an apartment in Madrid





STREET





3. THE BEDROOM

In a typical spanish bedroom, you will find a built in closet, one or more chairs or armchairs and a dresser. Floors in the bedroom are made of various materials such as wood or parquet. Otherwise, if it is made of tiles, there is a presence of a small carpet by the bed.



THE SECONDARY BEDROOM

This room is normally used as guest room, office room or the kids bedroom. This room in many cases doesn't have direct sunlight.

THE BATHROOM

There is normally just one bathroom per apartment. It is generally fully tiled, adding patterns and colours to the tiles on the wall. Toilet and shower are combined in one same room. Older apartments would have a bath but it has slowly been replaced by the shower. In addition, Spanish bathrooms not only have a toilet but also a bidet.

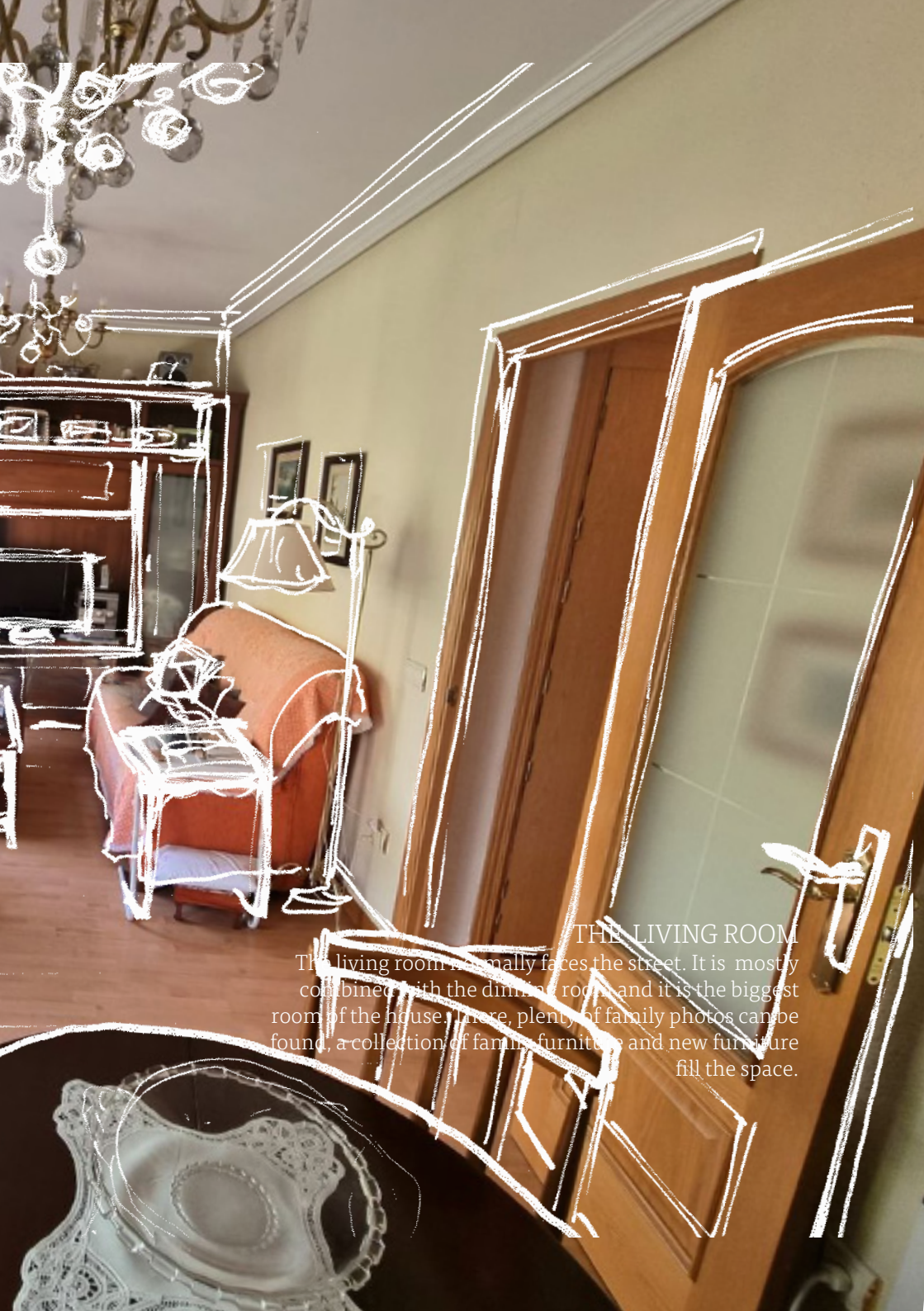




THE KITCHEN

The kitchen tends to be small. It normally faces the small interior patio. In a culture that loves food and cooking, these kitchens tend to be overcrowded with home appliances. Because of its connection to the water system, washing machines are normally placed here too. Kitchens are made personal by its inhabitants by adding plenty of magnets and drawings on the fridge or small plants wherever there is place left.

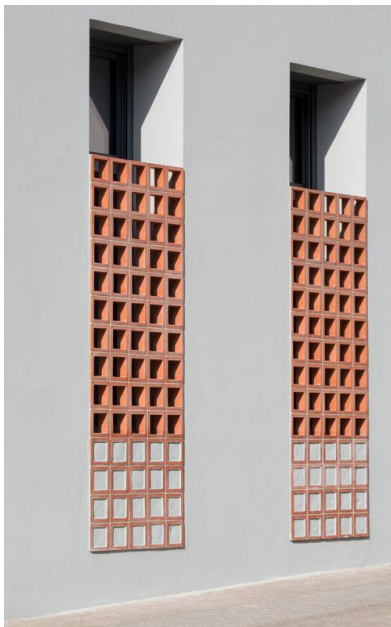
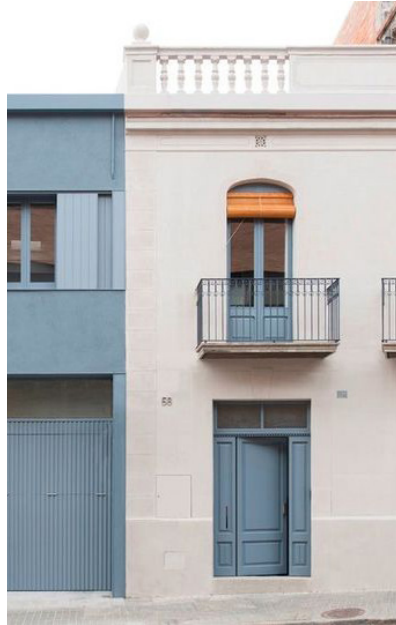
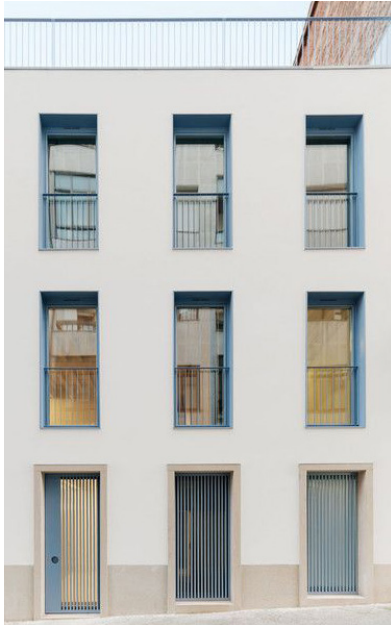




THE LIVING ROOM

The living room normally faces the street. It is mostly combined with the dining room, and it is the biggest room of the house. Here, plenty of family photos can be found, a collection of family furniture and new furniture fill the space.

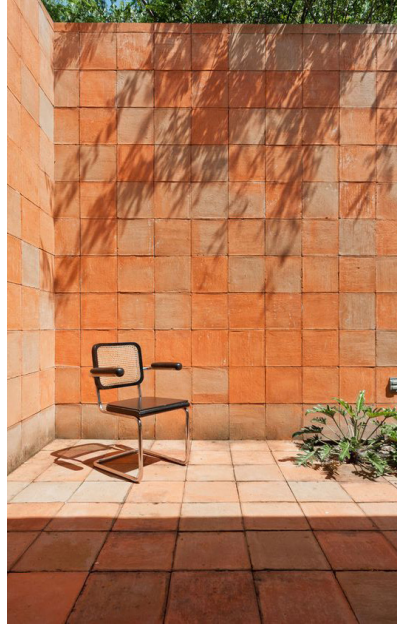
MATERIALIZATION



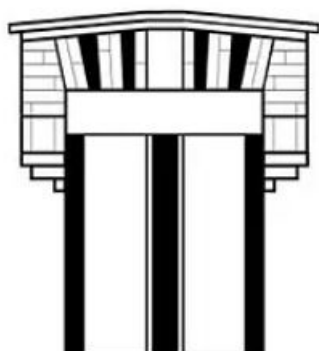
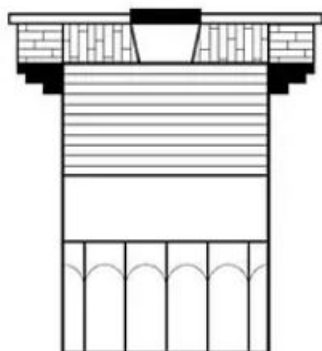
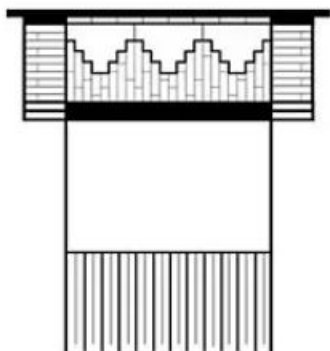
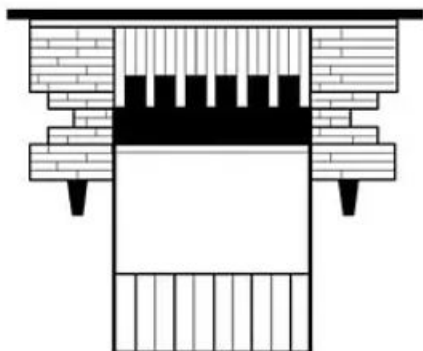
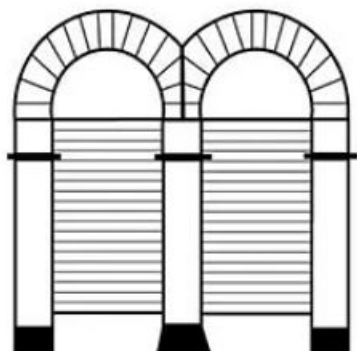
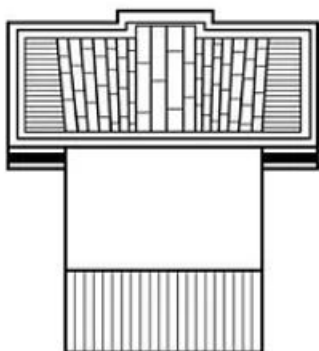
exterior



patios



creation and separation of spaces through floor materialization and patterns



TRADITION AND THE SENSE OF FAMILIARITY



The more familiar a place looks, the easier it is to adapt to it. A subtle way of bringing this sense of familiarity is through materialization. Materialization can also make a space warmer, making the users of the space more comfortable.

A locally made material present in many houses in Spain is terracotta tiles. However, the craftsmanship is dying. Hijos de Cesáreo Guerra is one of the last companies in the region of Madrid making terracotta tiles by hand. This family owned company is located merely 40km from the site, in the town of Campo Real.











CONCLUSIONS

The design strives to create normality and familiarity. For that, elements from Madrid's domestic architecture are being taken , such as the persianas alicantinas, the small balconies, the plastered facades. It also strives to care about the most vulnerable, not only the women for which the project is intended, but also the dying crafts such as the handmade terracotta tiles or the protection and recognition of its heritage, the Neomudéjar. Lastly, it hopes to bring back the sense of community to the neighbourhood using the typology of the square has main meeting point.

