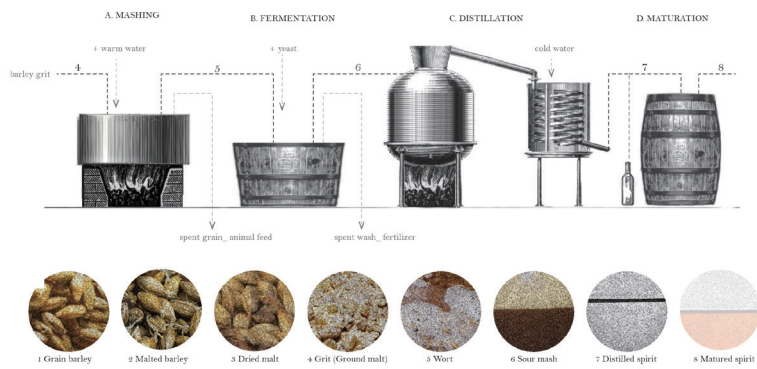
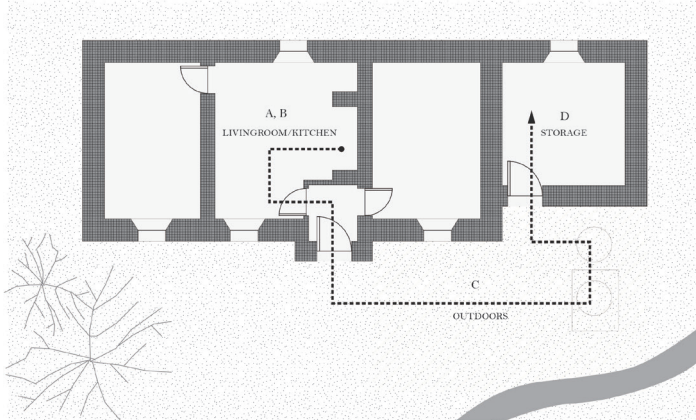
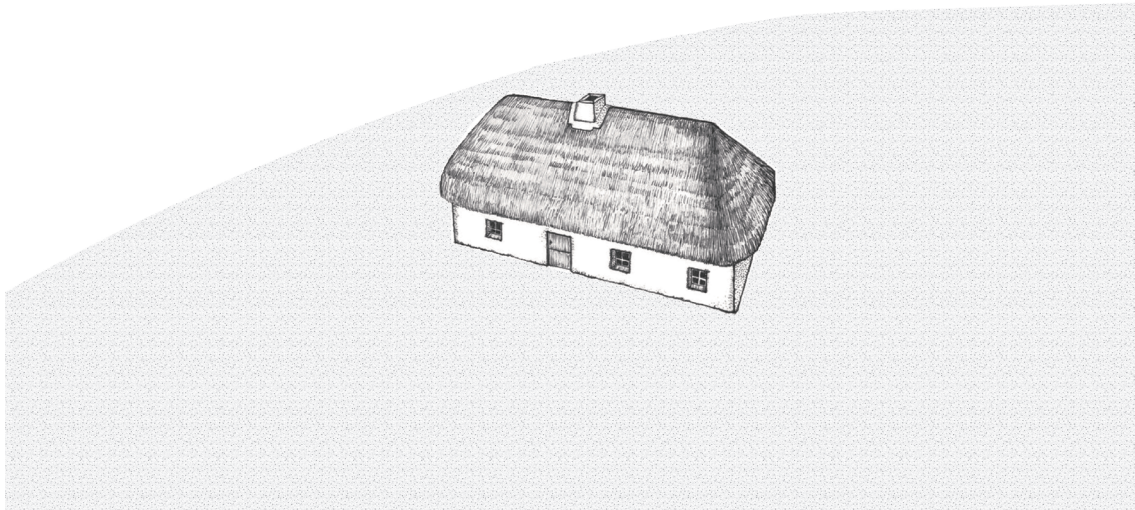
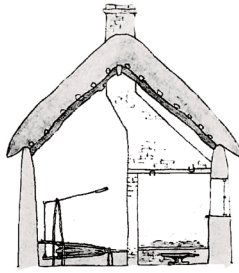


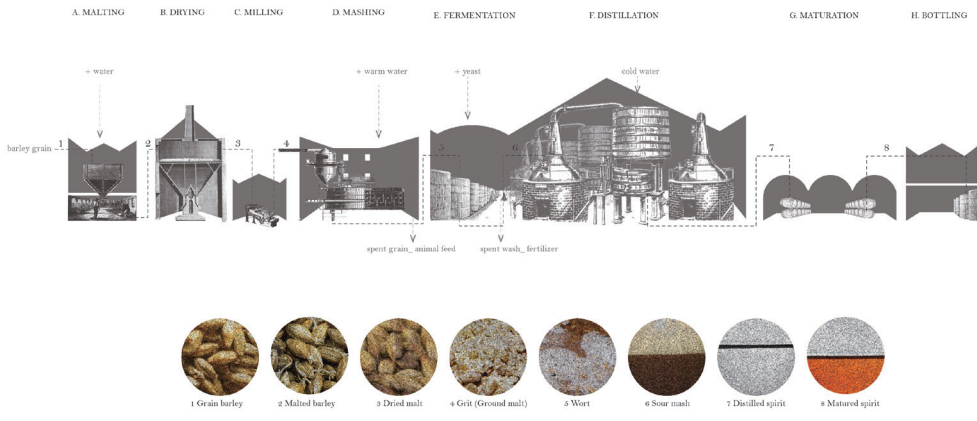
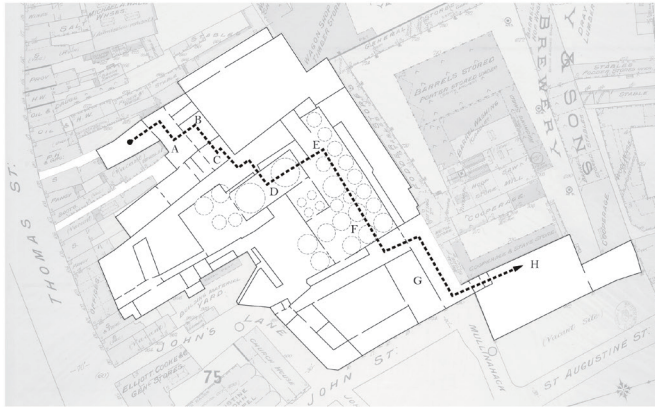
Spirit of Place



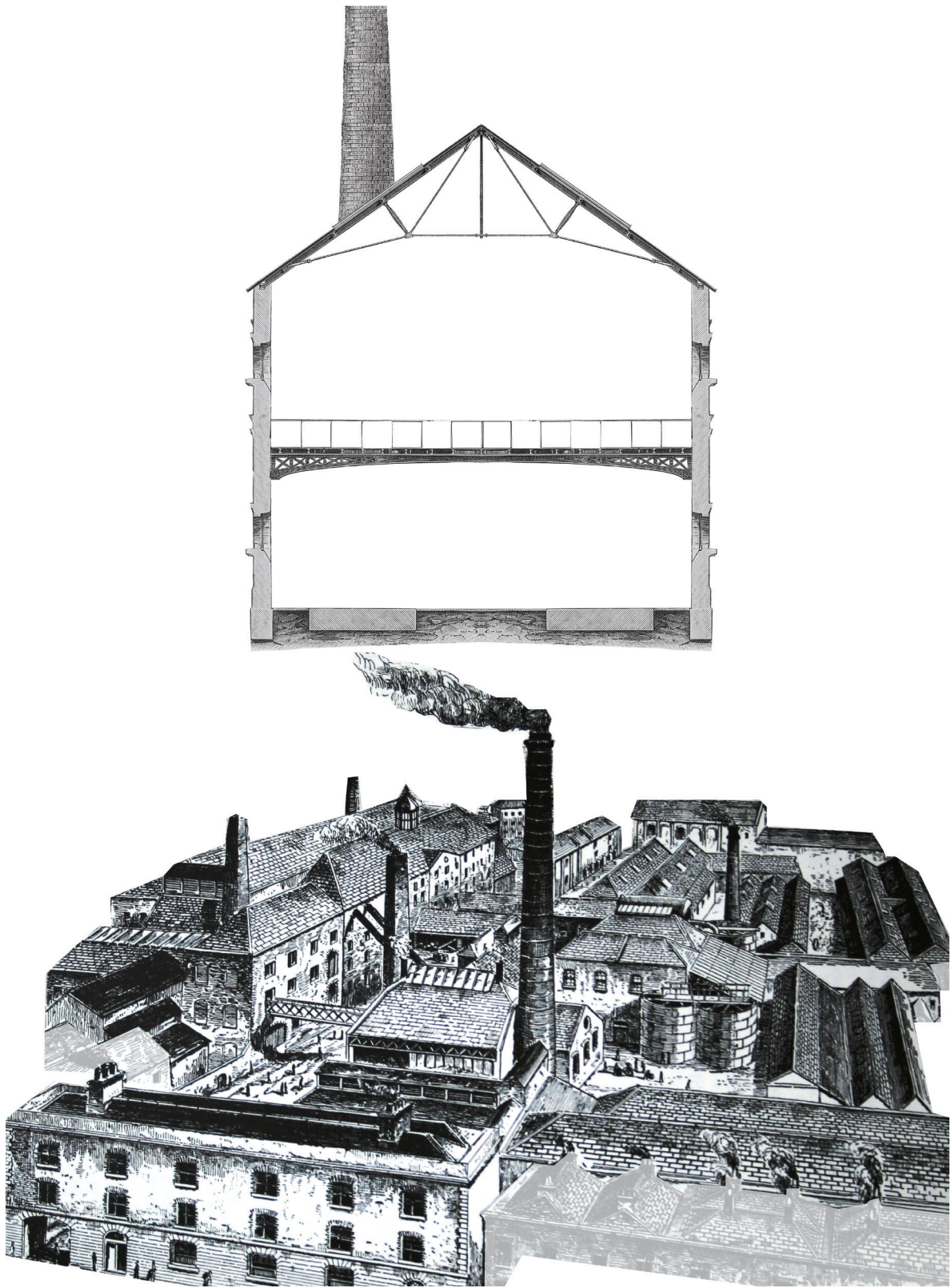
1729, Distilling in a domestic space



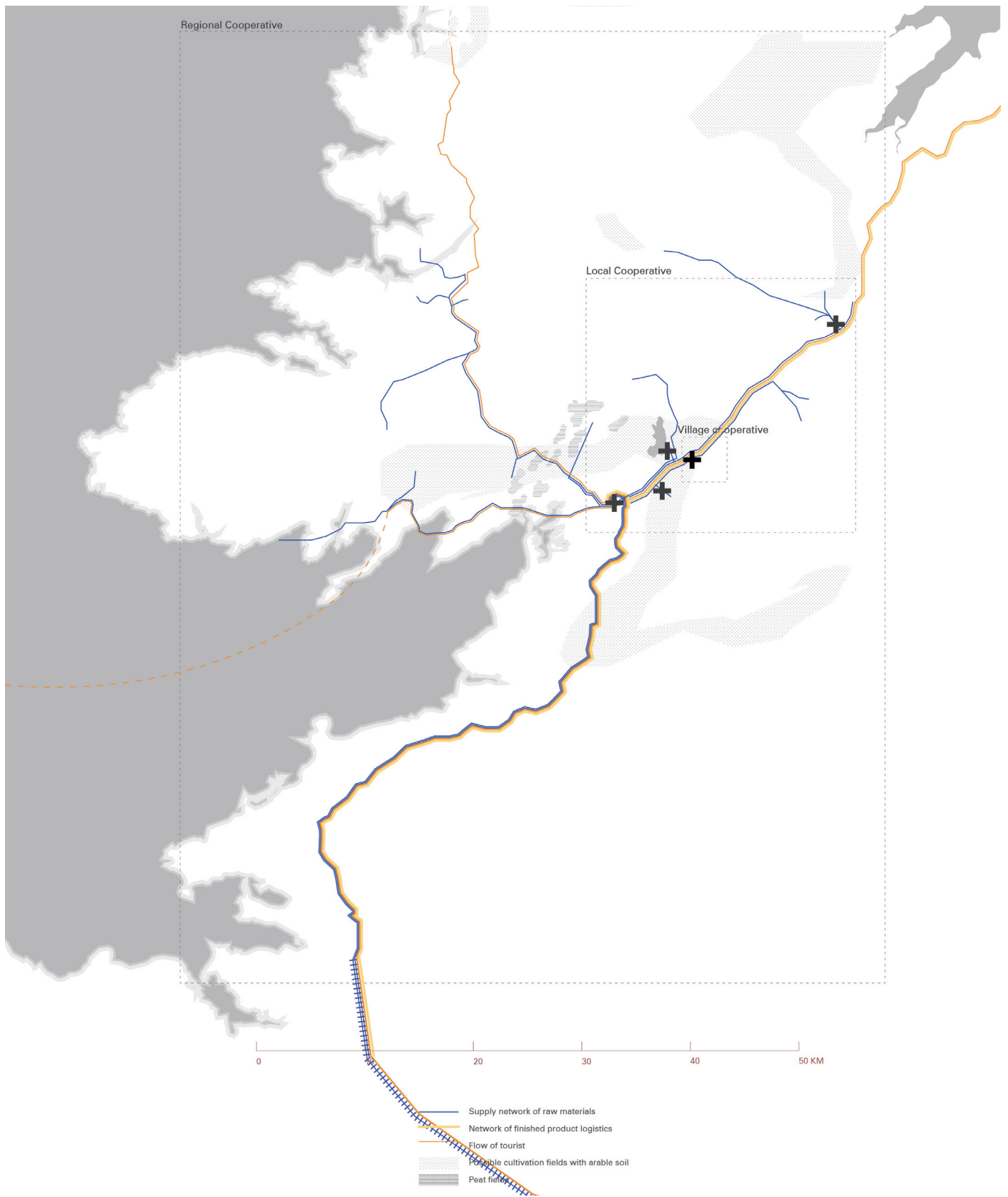
Distillery as a domestic space in 18C,
referenced from a typical Irish farm
house



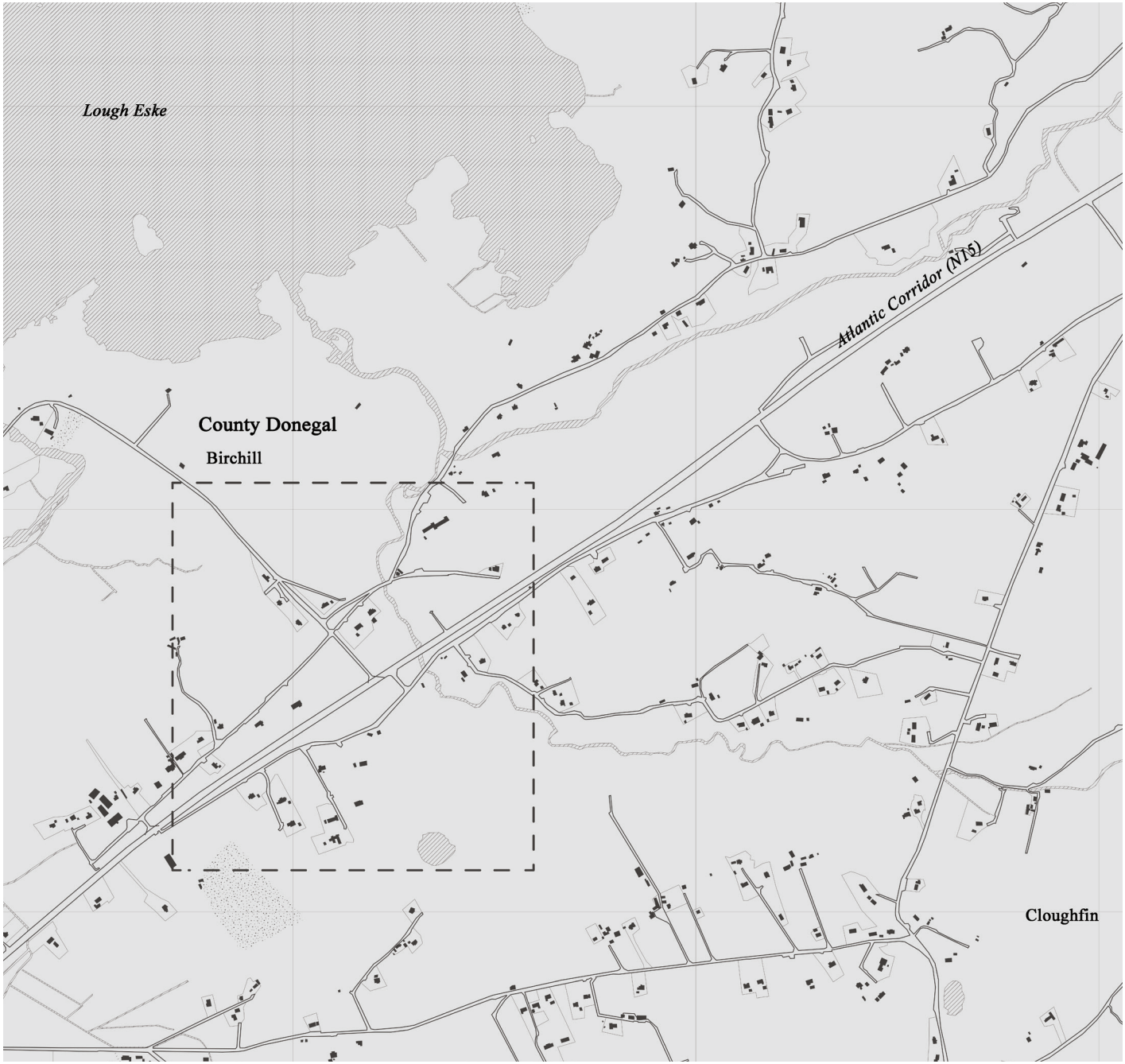
1893, Distilling in an industrial space



Distillery as an industrial space in 19C,
referenced from John's Lane distillery,
Dublin



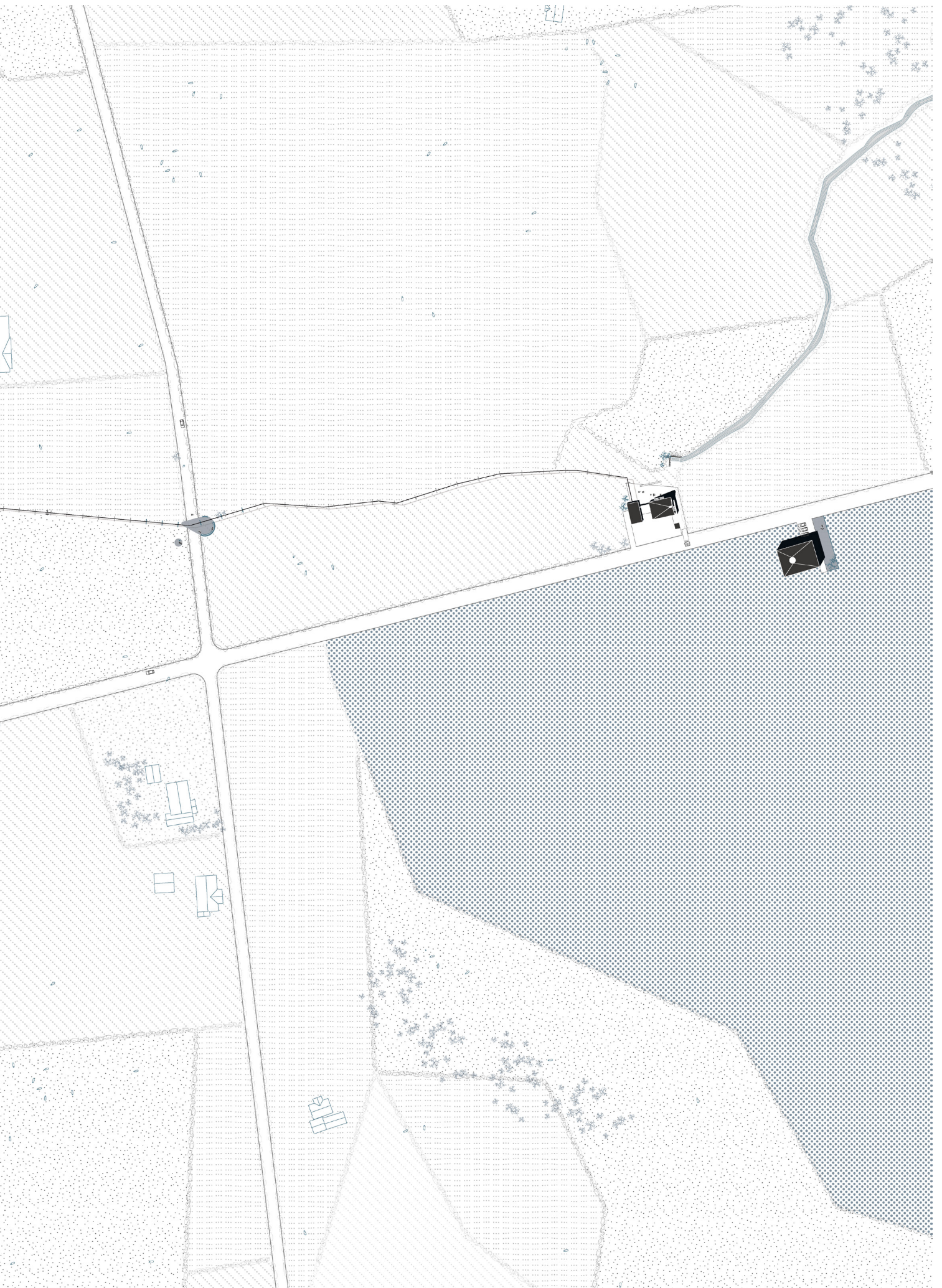
Regional Scale Network

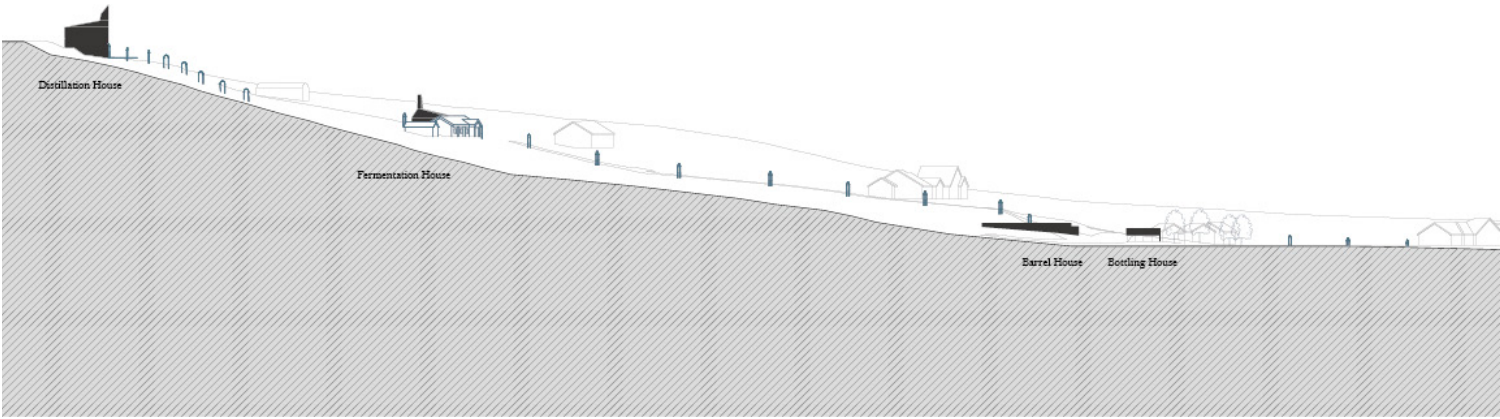


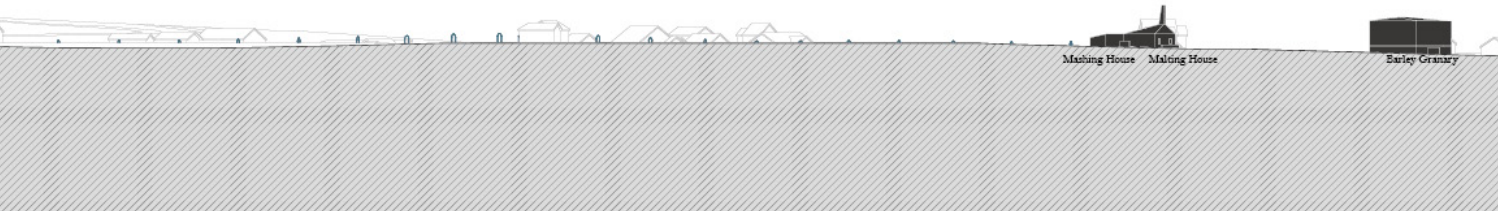
Site Drawings

Data from Google Map, 2018

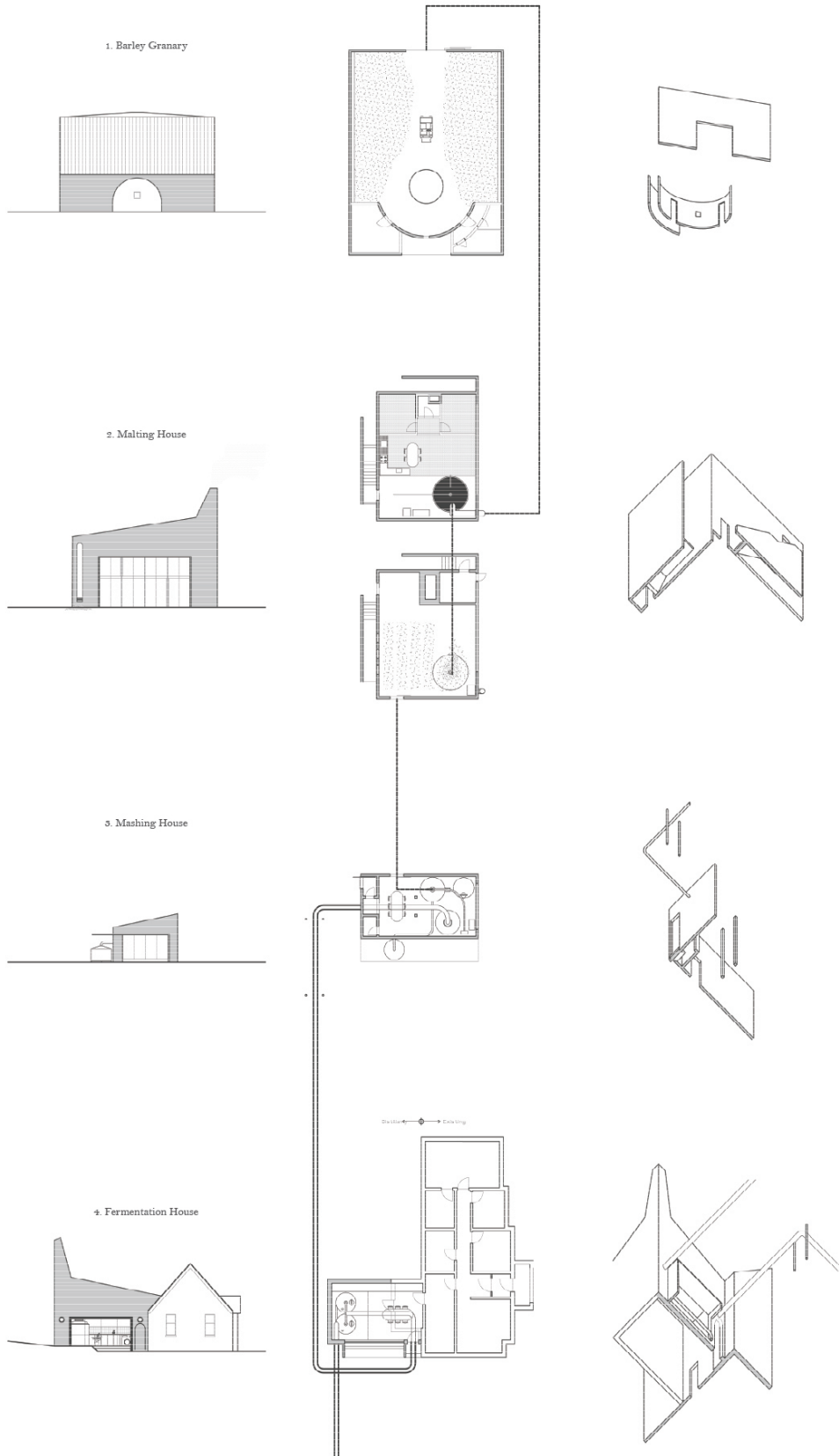




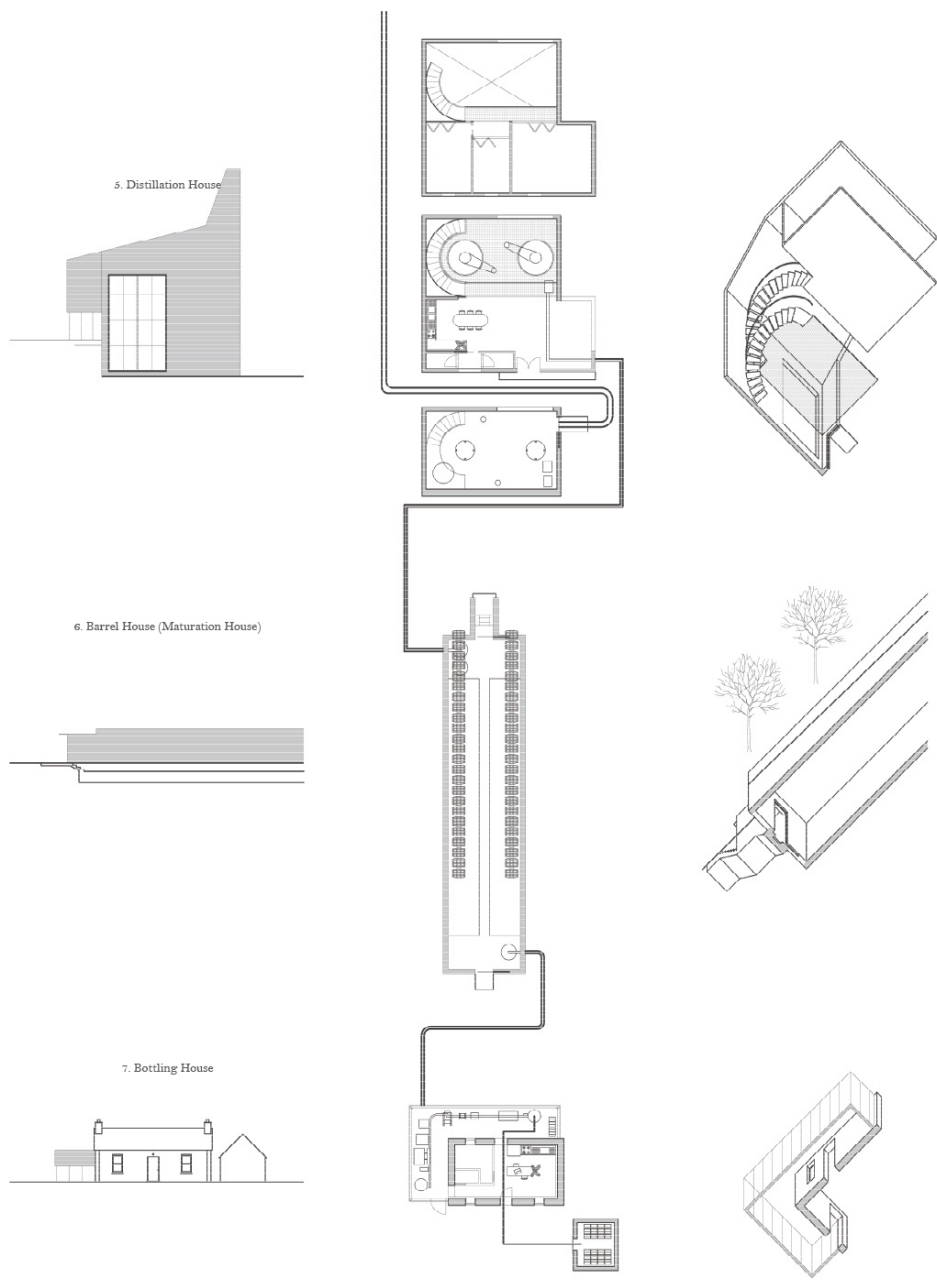




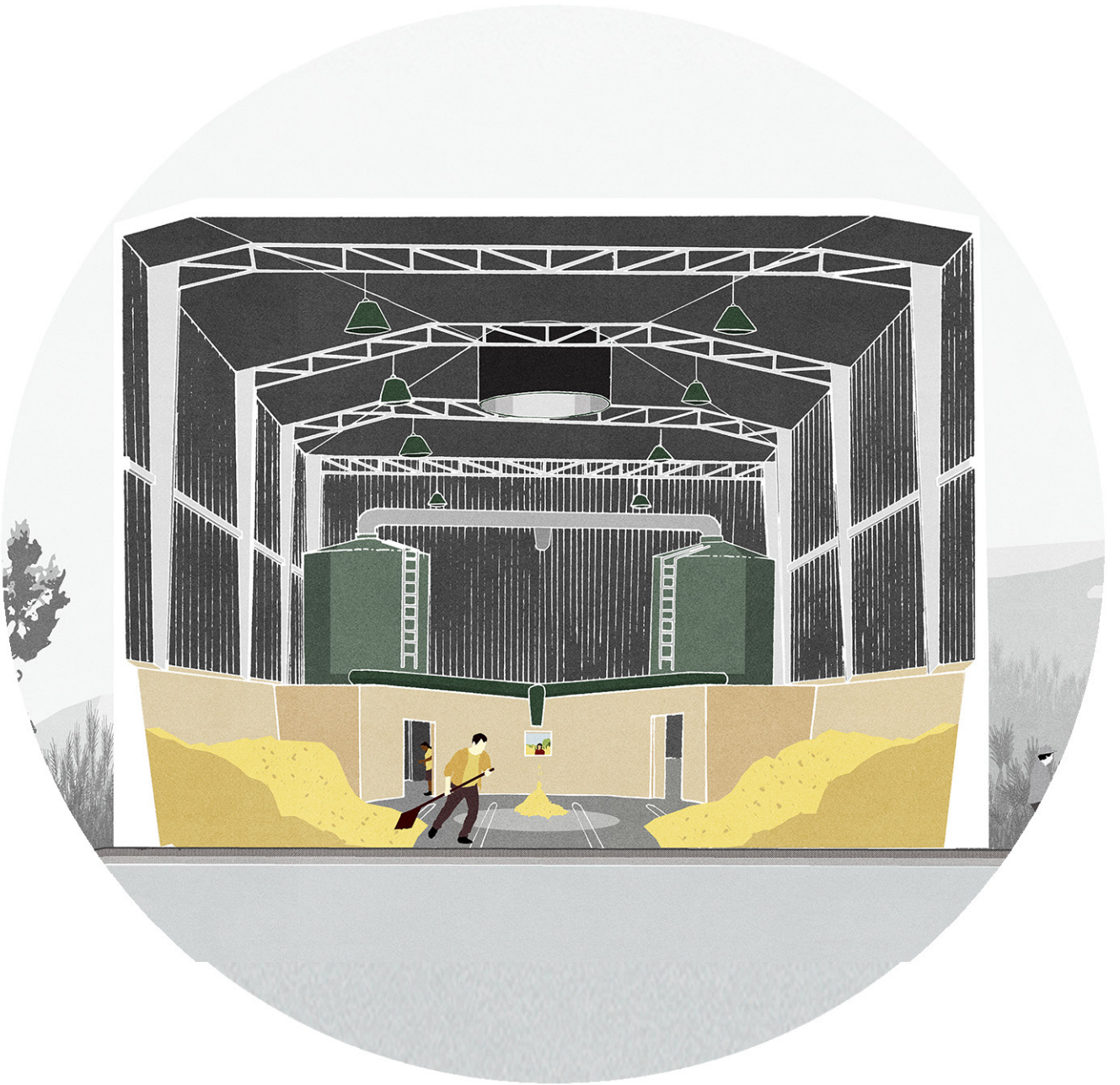
(Top) View of the distillery from the Atlantic Corridor
(Below) Section View



Production spaces in sequence 1



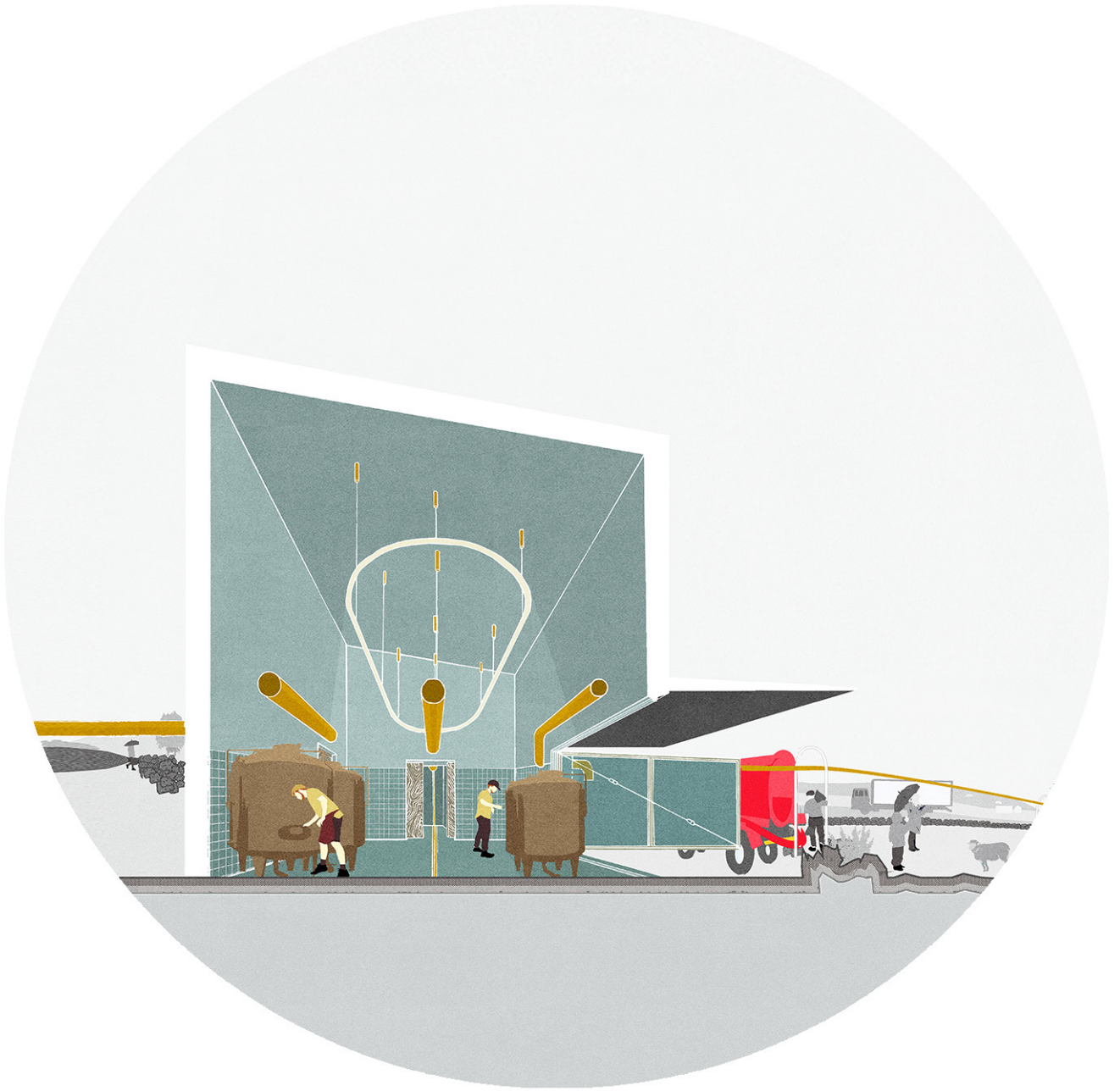
Production spaces in sequence 2



Granary



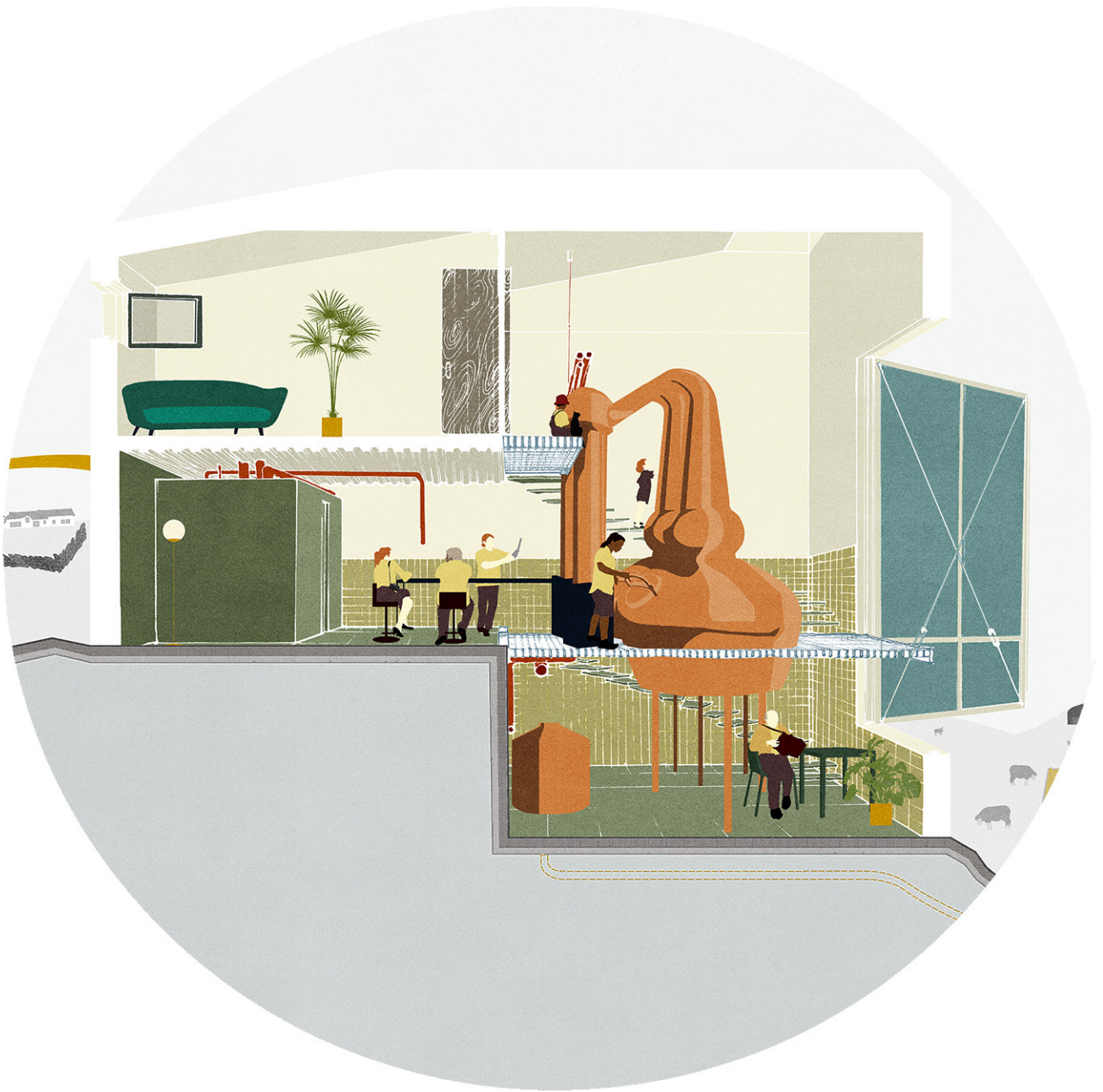
Malting House



Mashing House



Fermentation House



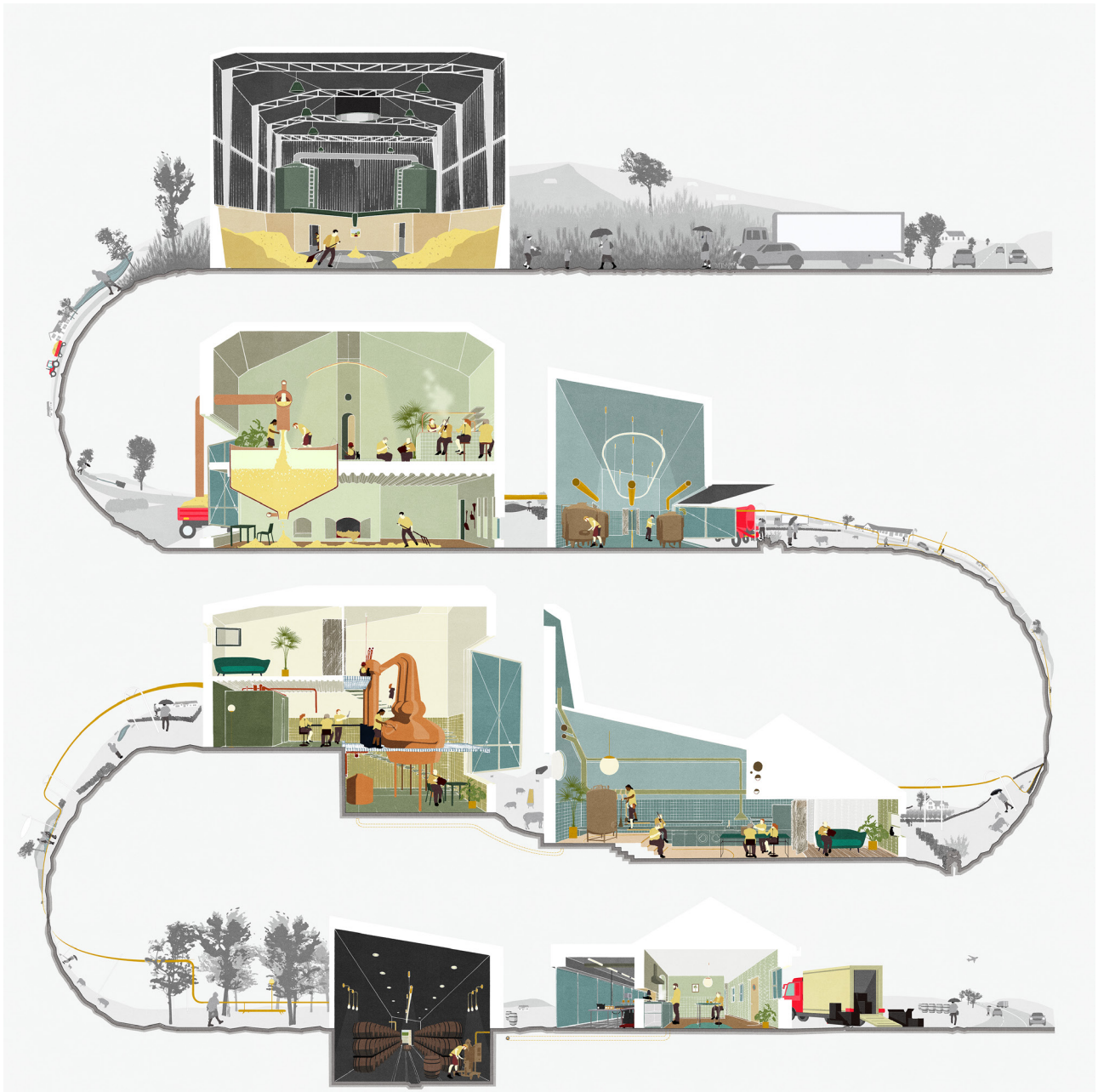
Distillation House



Maturation House



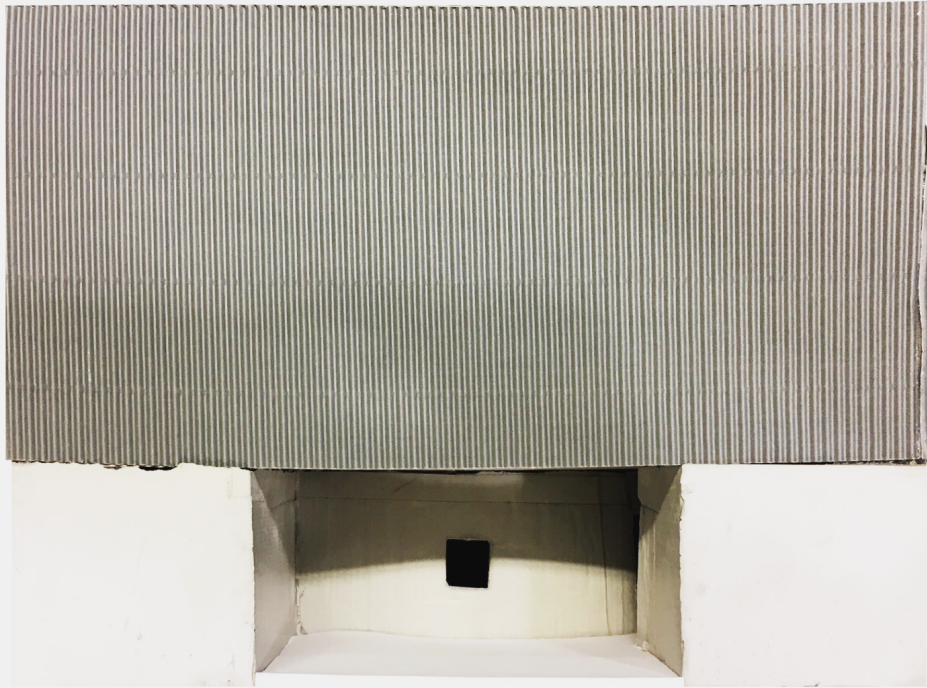
Bottling House



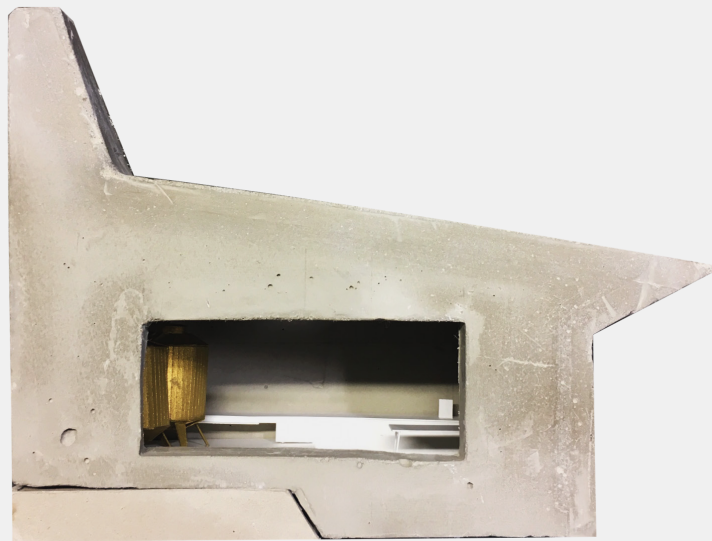
Lough Eske Distillery as a complete system



The final product



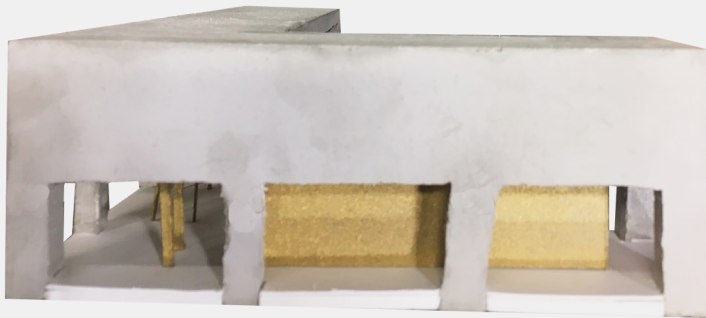
Physical Model_ (top) Granary,
(below) Malting House



Physical Model_ (top) Mashing House,
(below) Fermentation House



Physical Model_ Distillation House



Physical Model_ (top) Maturation House
(below) Bottling House