

# LONDON DEVIATIONS



Chiel Menger  
4829077

ADC Graduation Studio

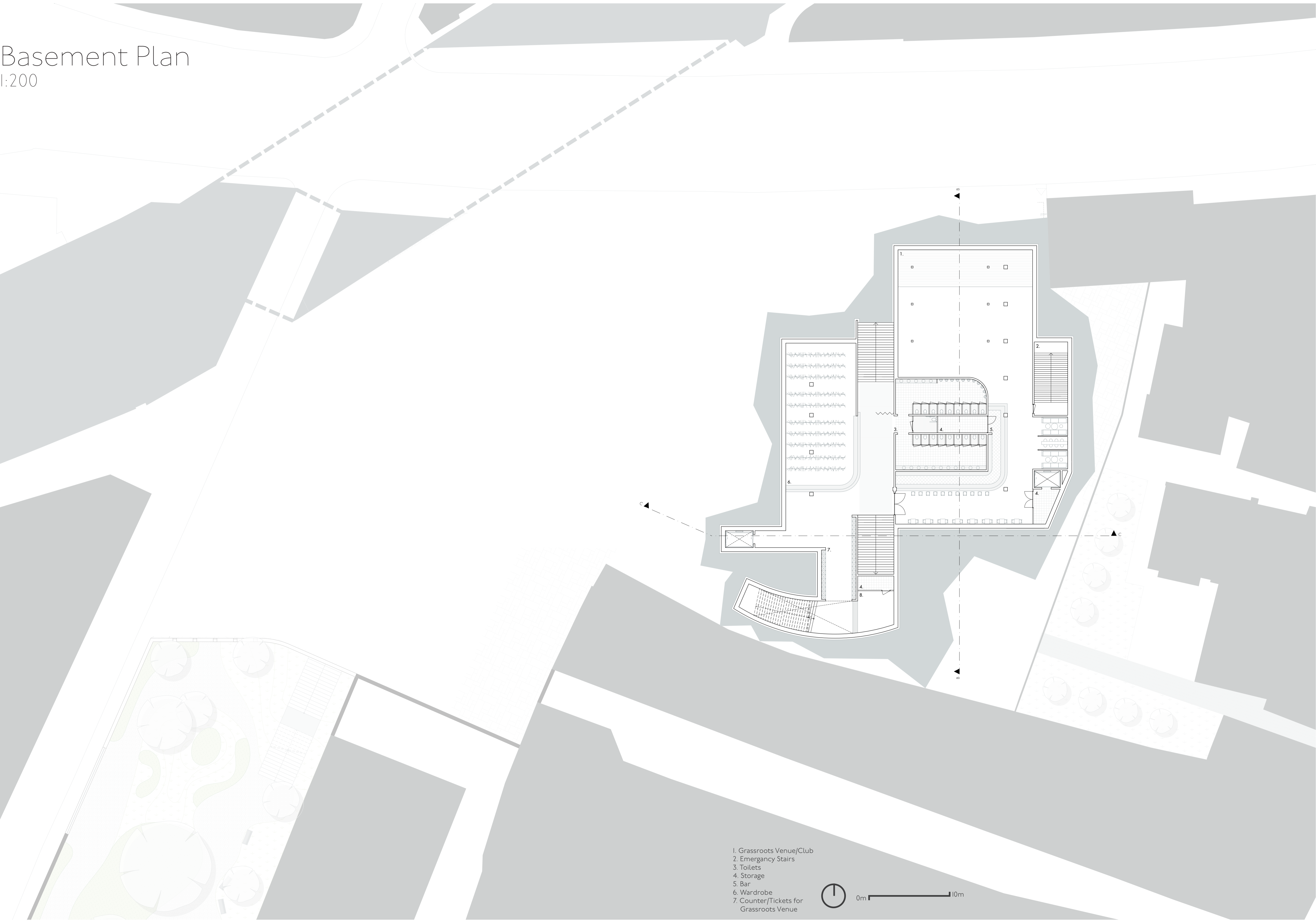
1<sup>st</sup> Mentor: J. Kuyper, 2<sup>nd</sup> Mentor: F. Eckardt 3<sup>rd</sup>  
Mentor: A. S. Alkan

Delegate of the Board of Examiners: S.  
Zijlstra

## DRAWING SET

Basement Plan

1:200

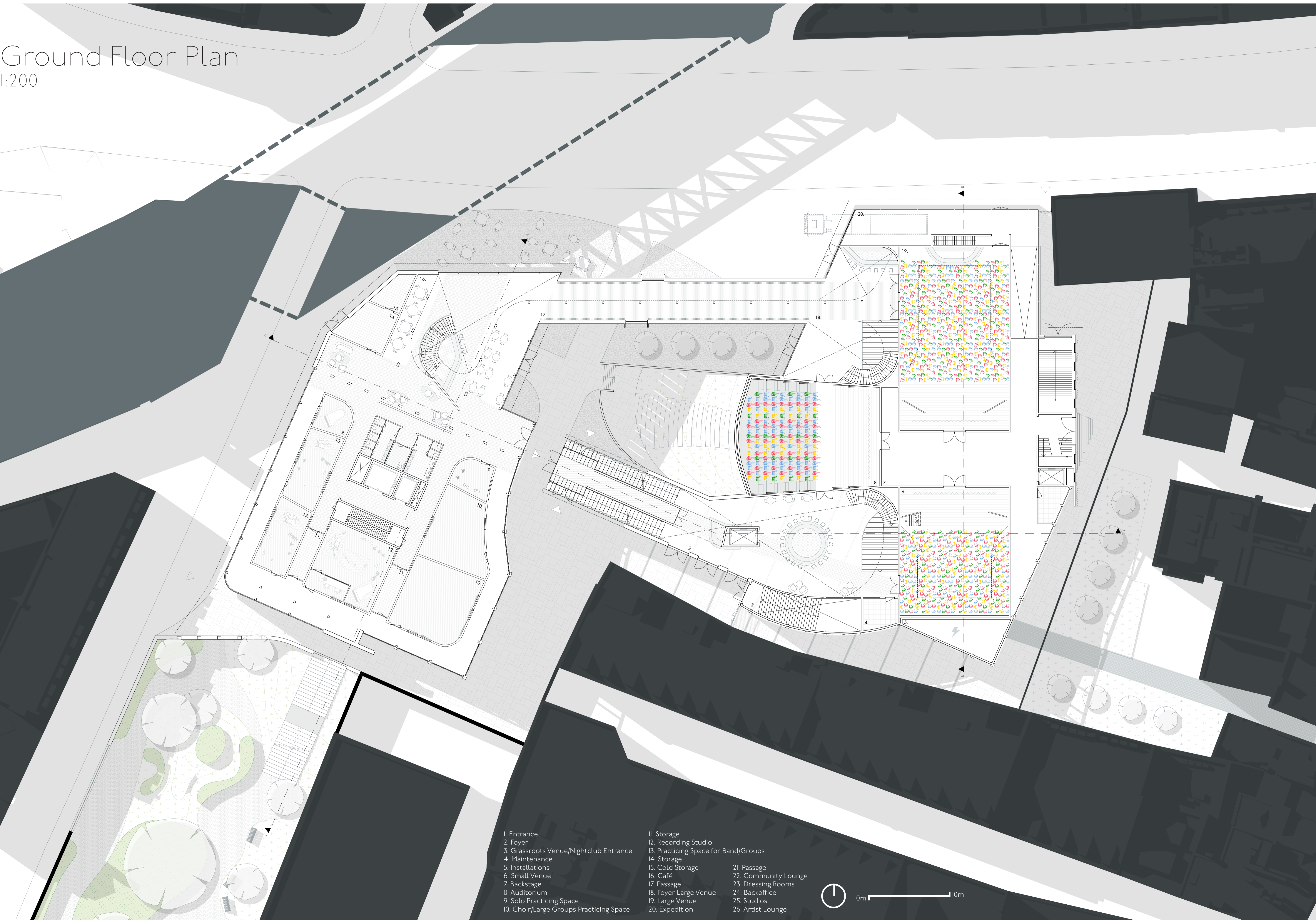


- 1. Grassroots Venue/Club
- 2. Emergency Stairs
- 3. Toilets
- 4. Storage
- 5. Bar
- 6. Wardrobe
- 7. Counter/Tickets for  
Grassroots Venue



# Ground Floor Plan

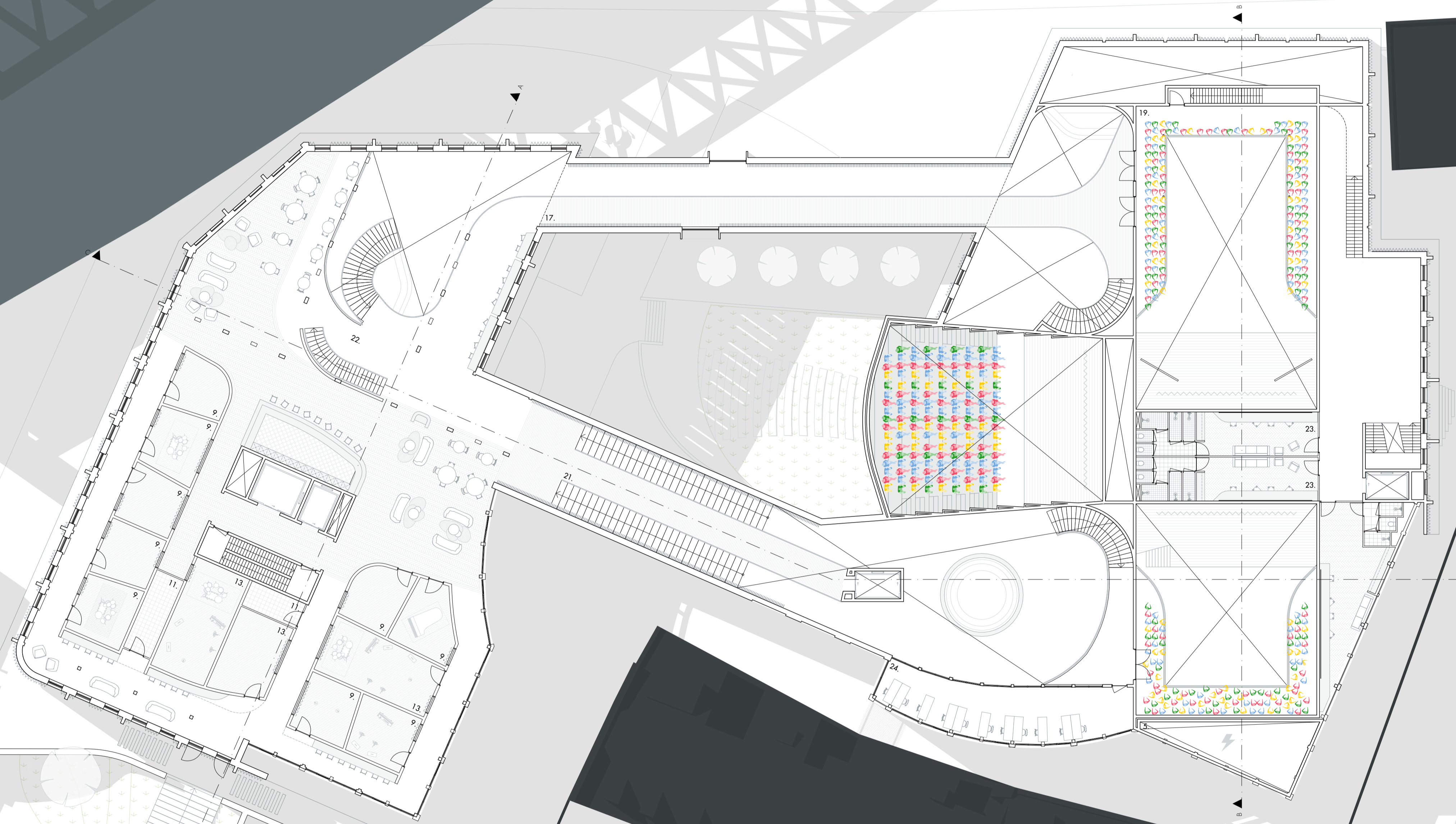
1:200



- I. Entrance
- 2. Foyer
- 3. Grassroots Venue/Nightclub Entrance
- 4. Maintenance
- 5. Installations
- 6. Small Venue
- 7. Backstage
- 8. Auditorium
- 9. Solo Practicing Space
- 10. Choir/Large Groups Practicing Space
- 11. Storage
- 12. Recording Studio
- 13. Practicing Space for Band/Groups
- 14. Storage
- 15. Cold Storage
- 16. Café
- 17. Passage
- 18. Foyer Large Venue
- 19. Large Venue
- 20. Expedition
- 21. Passage
- 22. Community Lounge
- 23. Dressing Rooms
- 24. Backoffice
- 25. Studios
- 26. Artist Lounge



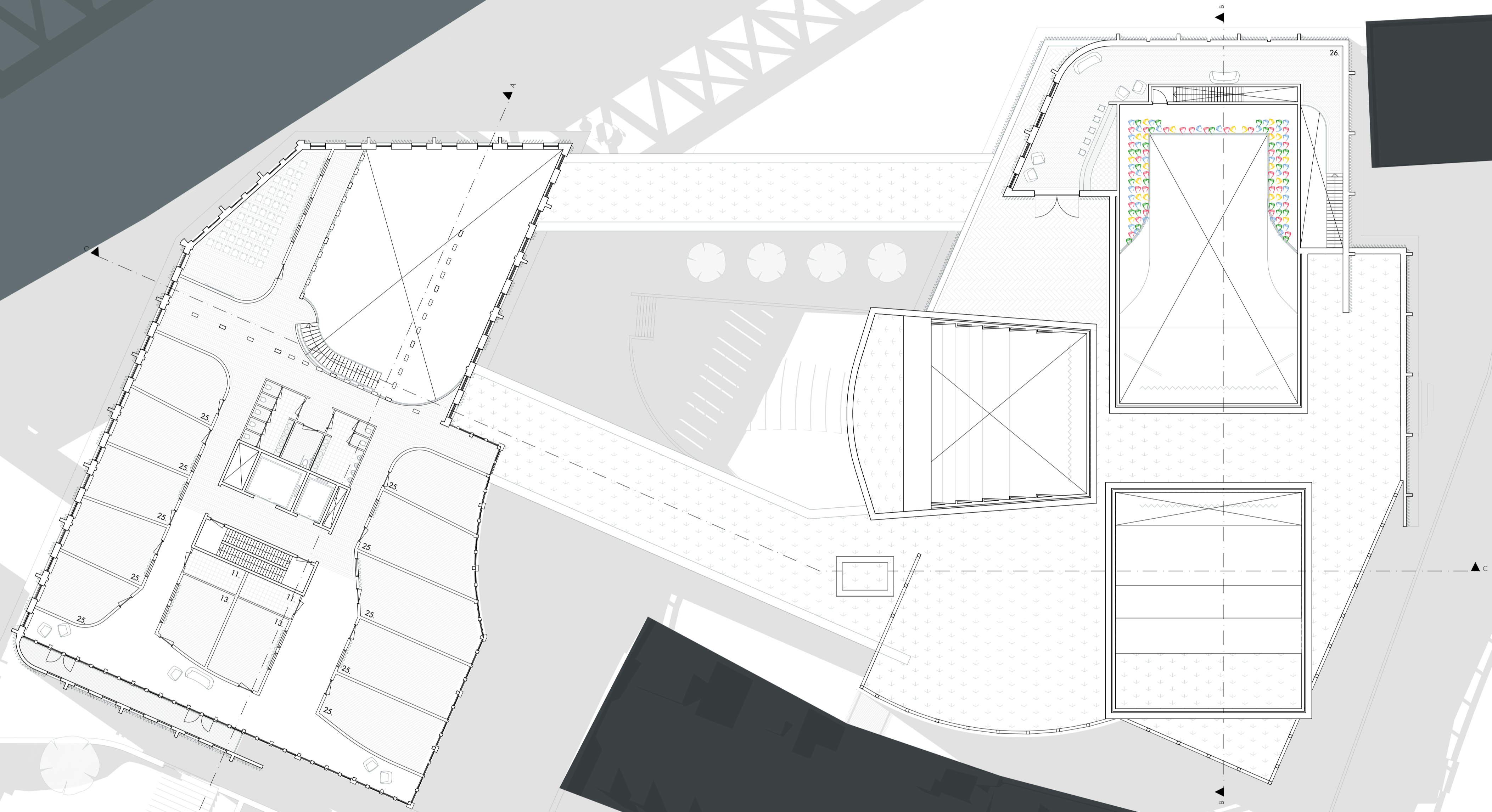
First Floor  
1:200



- |   |                                      |                      |
|---|--------------------------------------|----------------------|
| 1. Entrance                             | 11. Storage                          | 21. Passage          |
| 2. Foyer                                | 12. Recording Studio                 | 22. Community Lounge |
| 3. Grassroots Venue/Nightclub Entrance  | 13. Practicing Space for Band/Groups | 23. Dressing Rooms   |
| 4. Maintenance                          | 14. Storage                          | 24. Backoffice       |
| 5. Installations                        | 15. Cold Storage                     | 25. Studios          |
| 6. Small Venue                          | 16. Café                             | 26. Artist Lounge    |
| 7. Backstage                            | 17. Passage                          |                      |
| 8. Auditorium                           | 18. Foyer Large Venue                |                      |
| 9. Solo Practicing Space                | 19. Large Venue                      |                      |
| 10. Choir/Large Groups Practicing Space | 20. Expedition                       |                      |



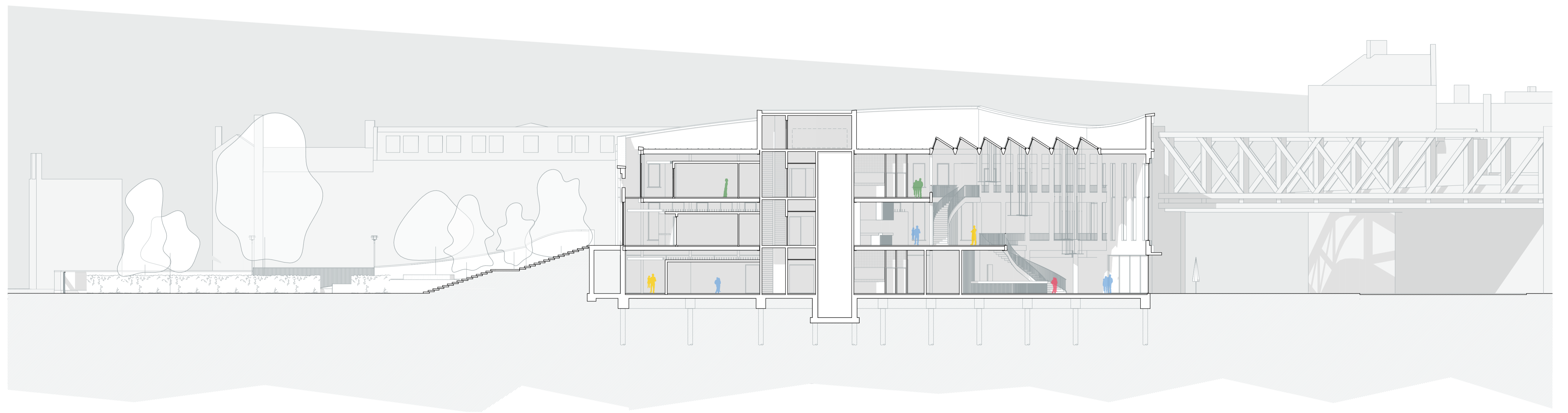
Second Floor  
1:200



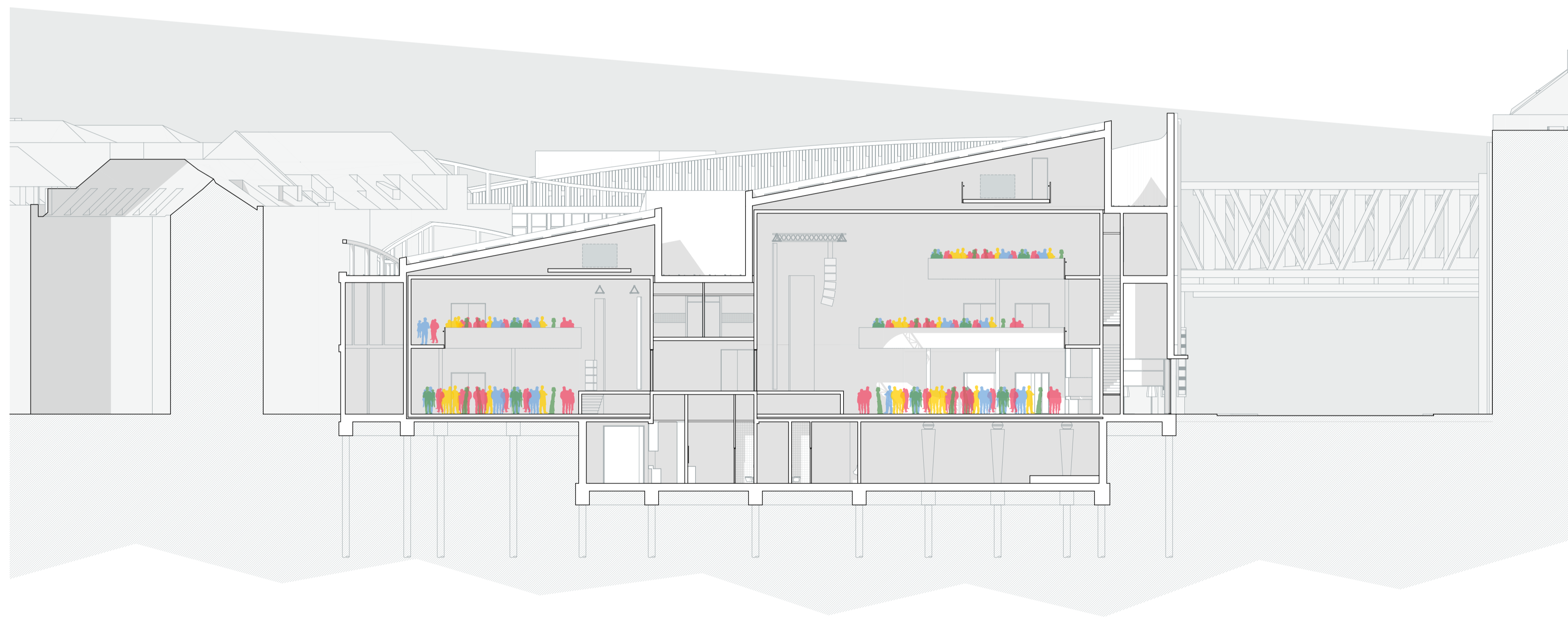
- I. Entrance
- 2. Foyer
- 3. Grassroots Venue/Nightclub Entrance
- 4. Maintenance
- 5. Installations
- 6. Small Venue
- 7. Backstage
- 8. Auditorium
- 9. Solo Practicing Space
- 10. Choir/Large Groups Practicing Space
- II. Storage
- 12. Recording Studio
- 13. Practicing Space for Band/Groups
- 14. Storage
- 15. Cold Storage
- 16. Café
- 17. Passage
- 18. Foyer Large Venue
- 19. Large Venue
- 20. Expedition
- 21. Passage
- 22. Community Lounge
- 23. Dressing Rooms
- 24. Backoffice
- 25. Studios
- 26. Artist Lounge



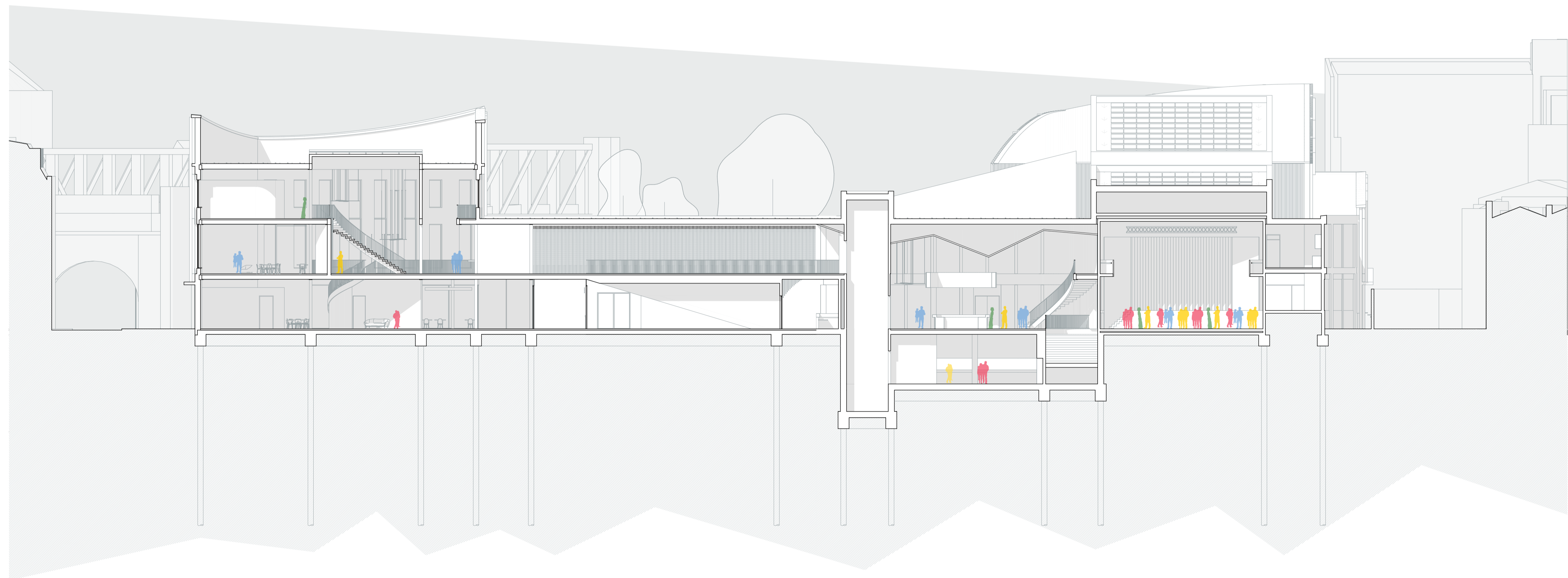
Section A  
1:200



Section B  
1:200



Section C  
1:200

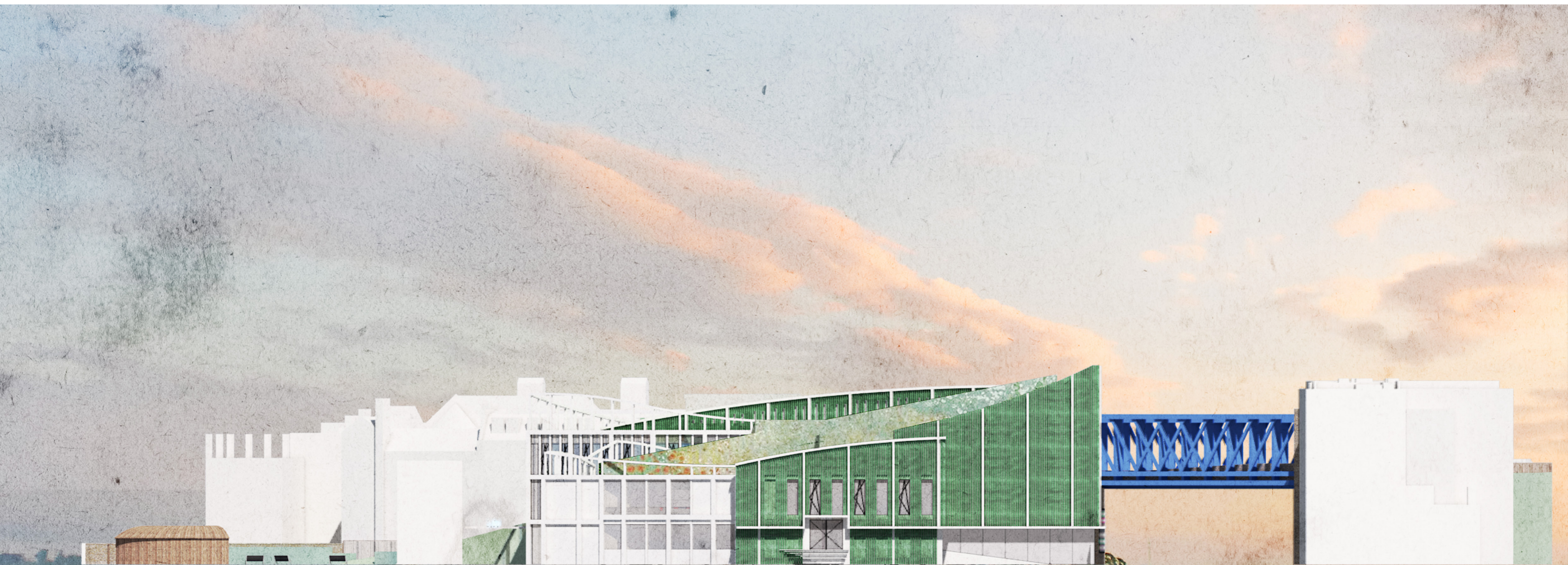




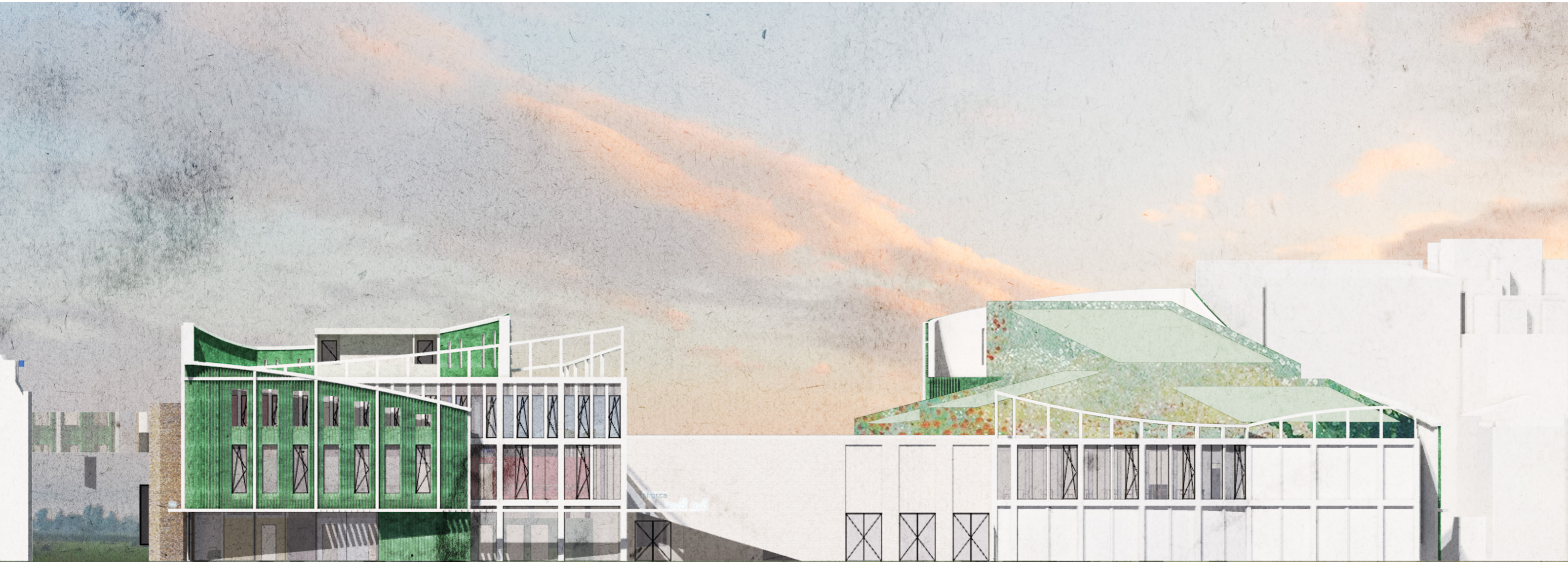
# North Facade



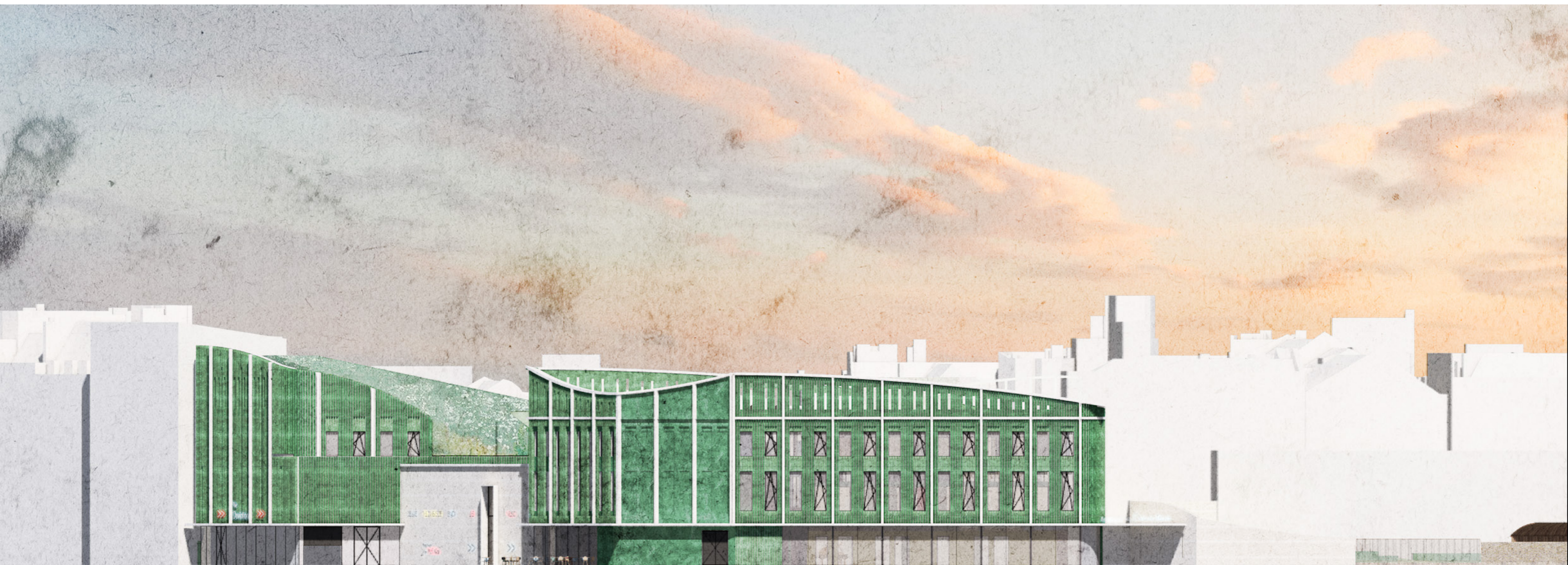
# East Facade



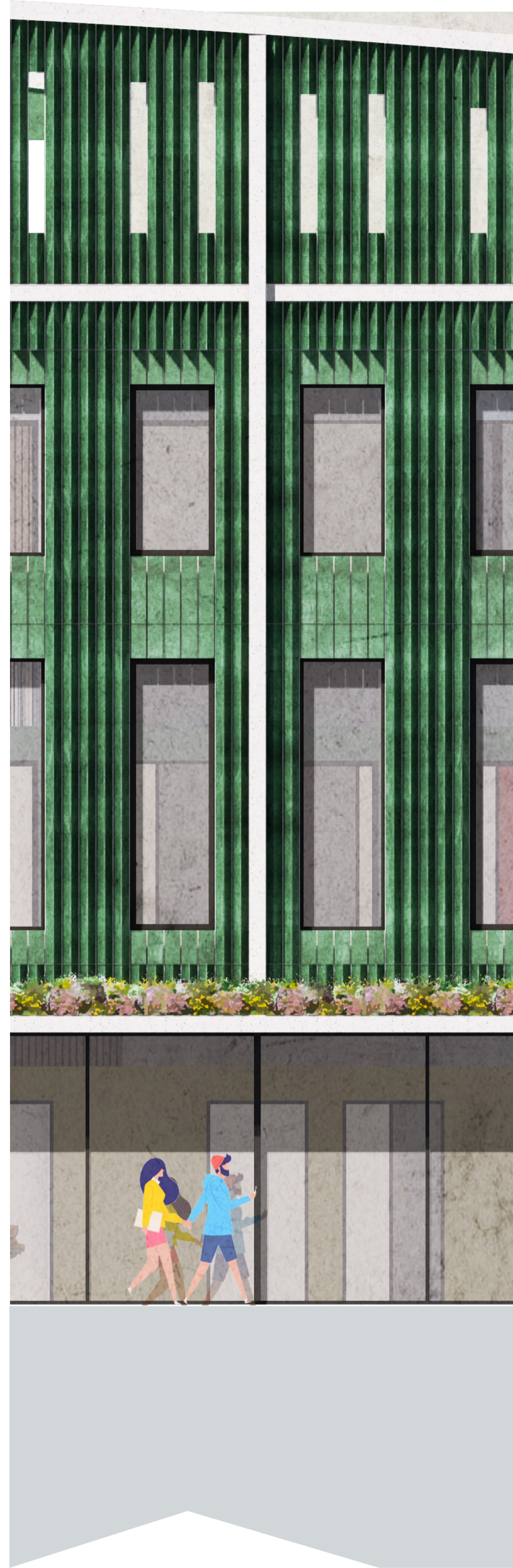
# South Facade



# West Facade



Fragment  
'Front'  
1:20 (scaled to 1:50)



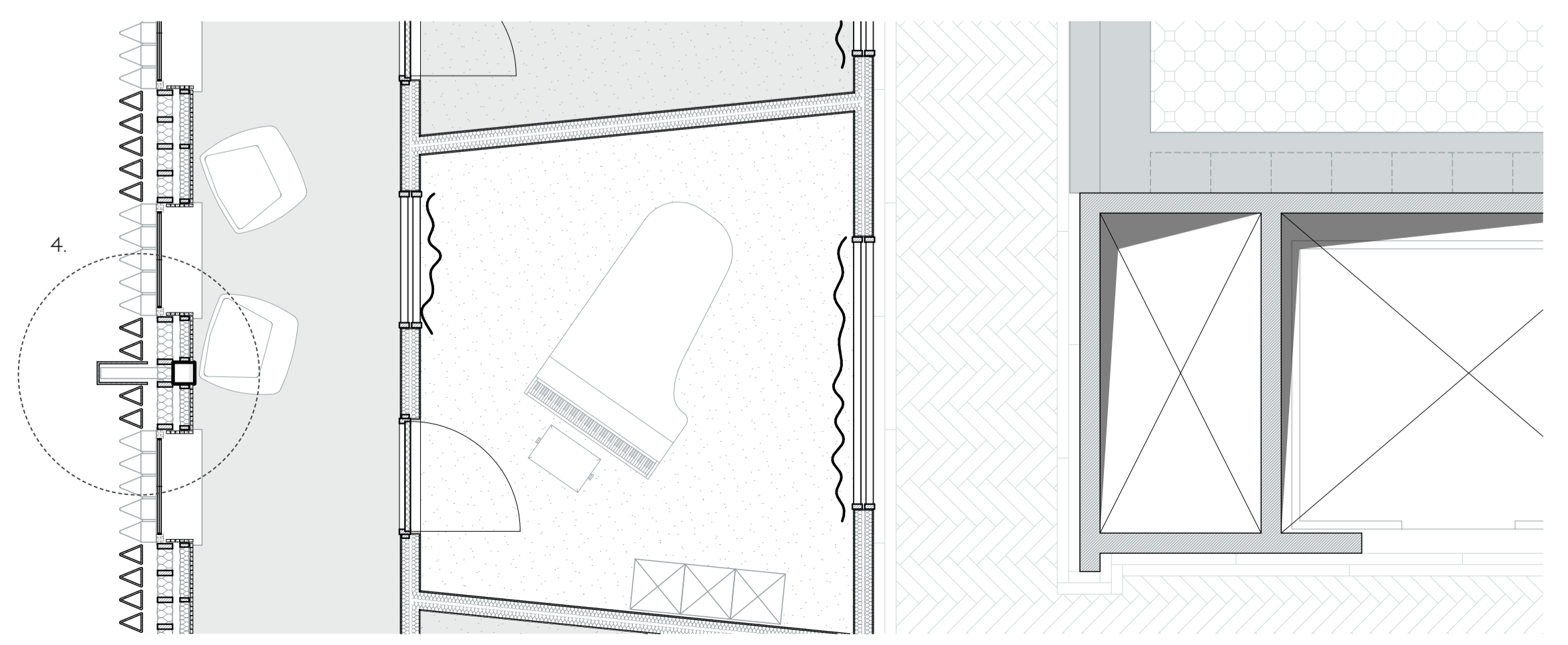
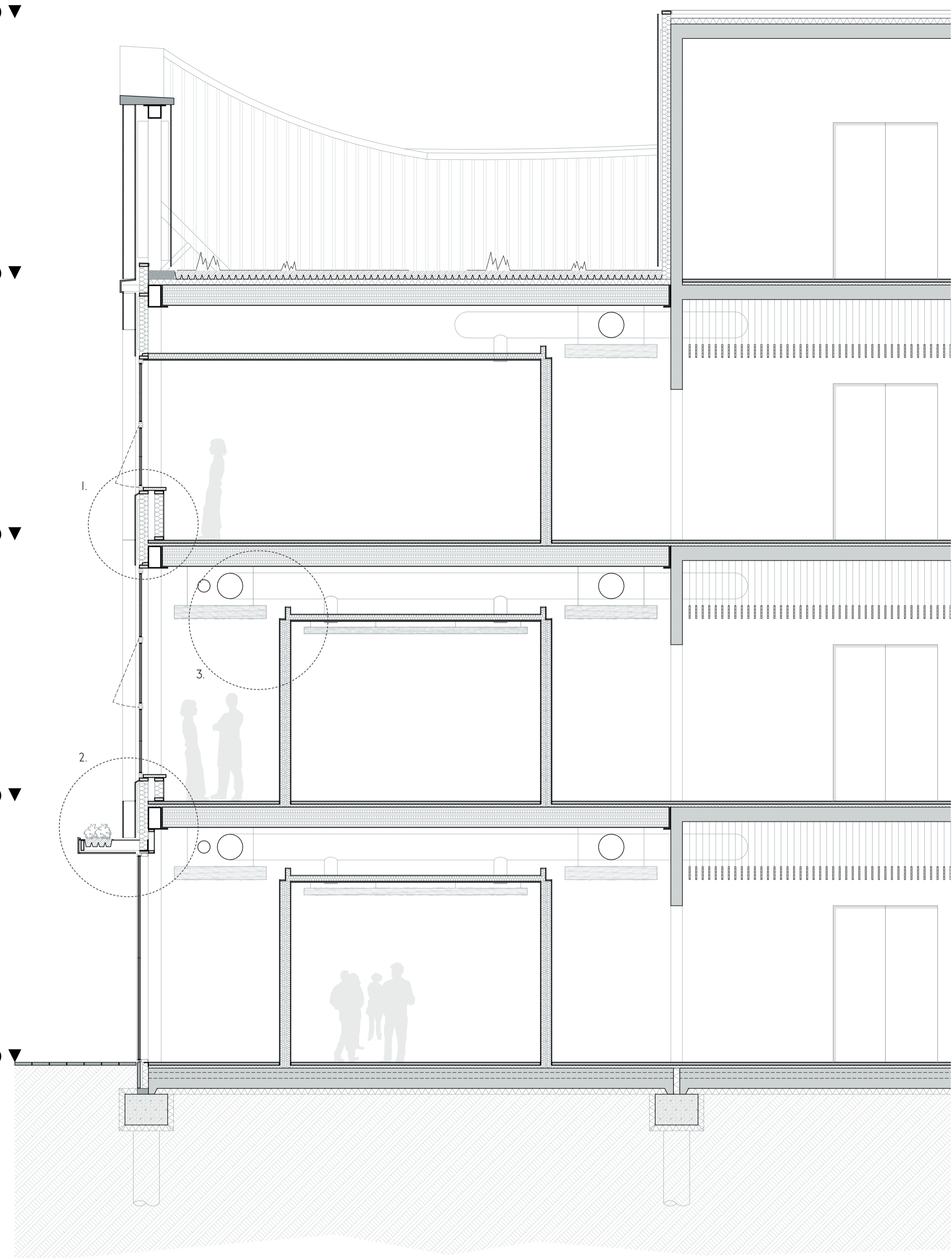
+18.000 ▼

+13.500 ▼

+9.000 ▼

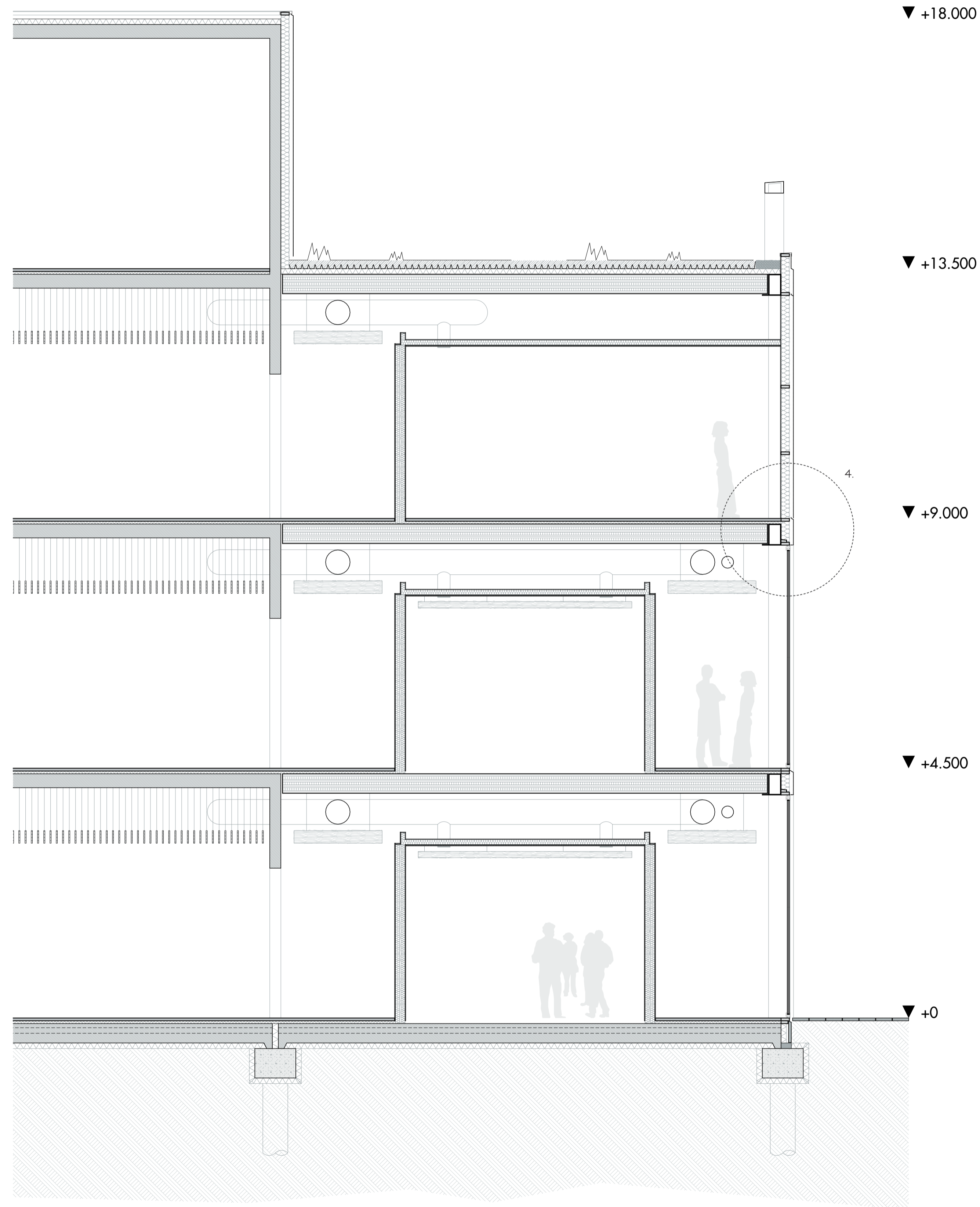
+4.500 ▼

+0 ▼



# Fragment 'Backside'

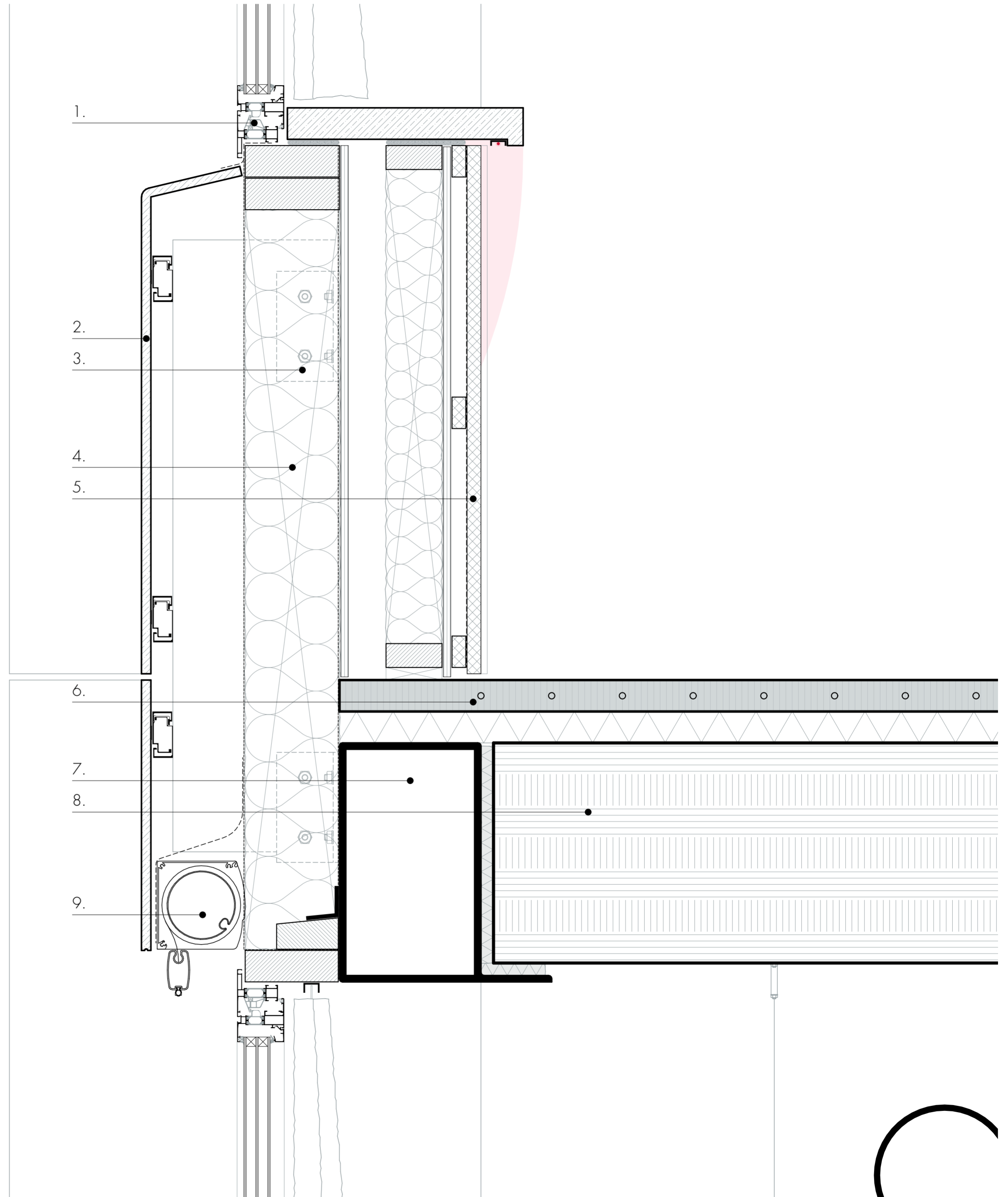
1:20 (scaled to 1:50)



# Detail I

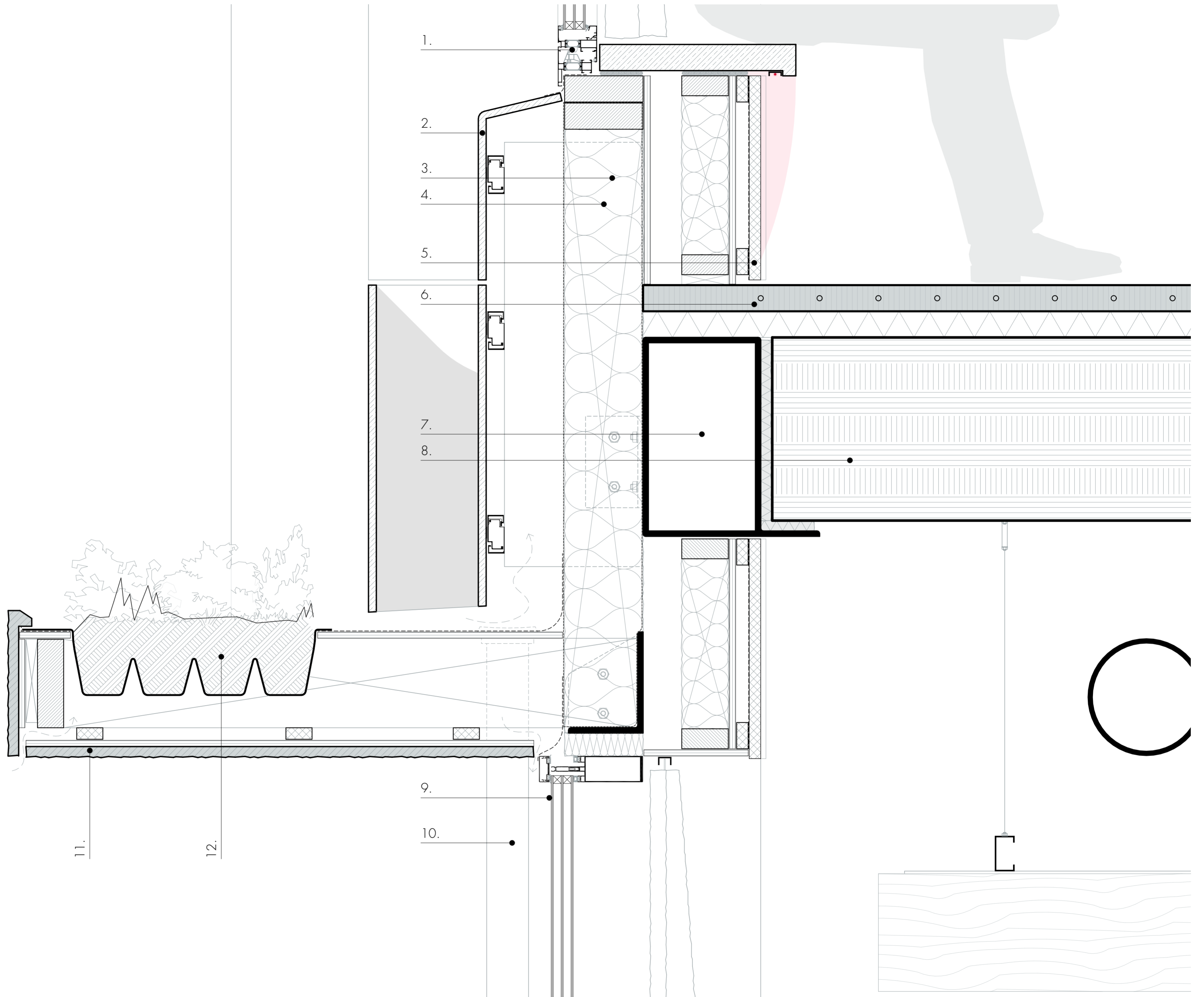
1:5

1. Aluminium Window Frame
2. Ceramic Facade
3. Mounting System
4. Timber Frame Element  
Back structure filled with Metesse Insulation
5. Wooden Slats Interior Finish
6. Suspended Screed  
Underfloor Heating
7. THQa Beam
8. CLT Slab  
Acoustically detached on felt strips
9. Integrated Sunscreen



# Detail 2

1:5

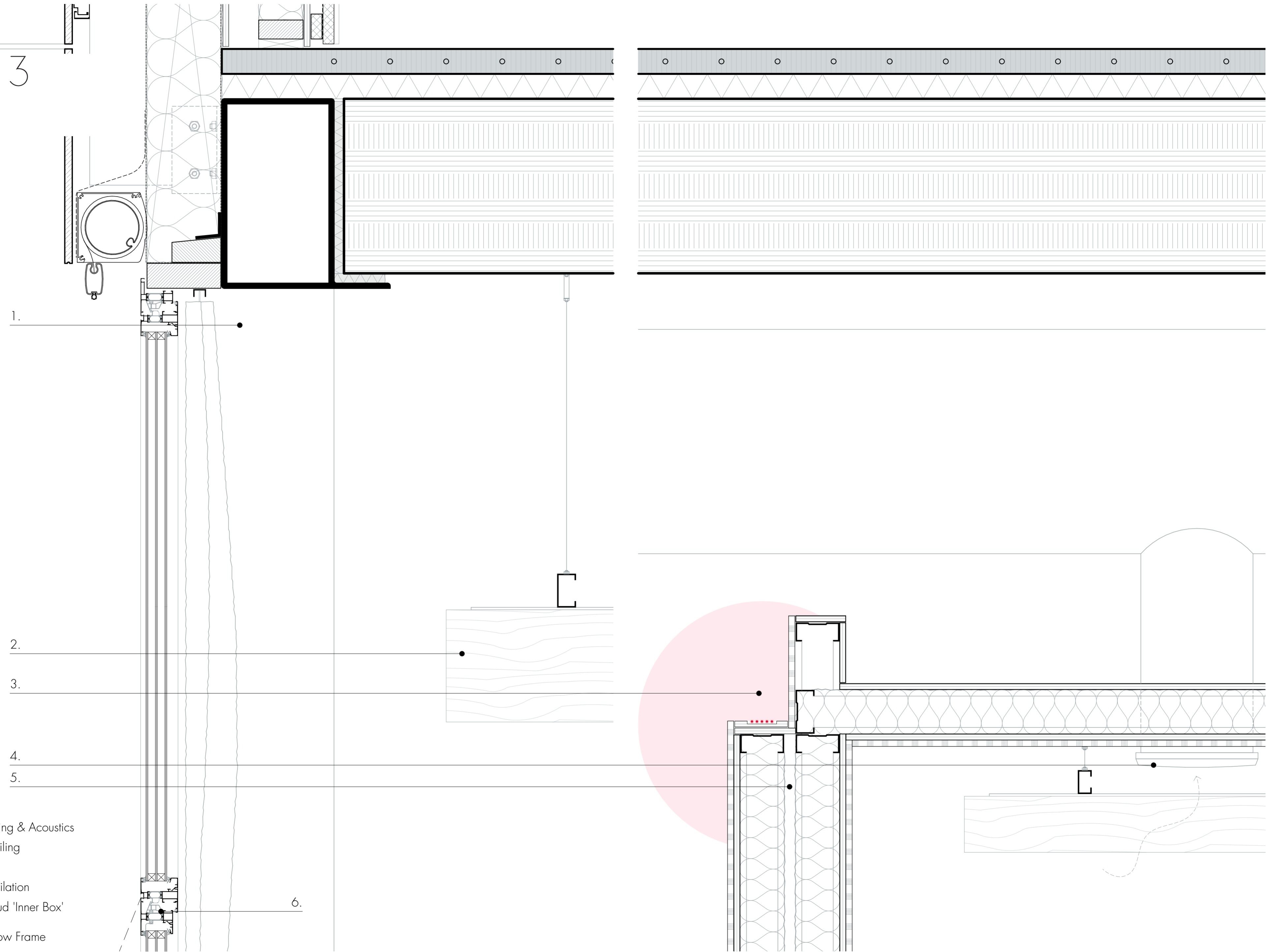


- 1. Aluminium Window Frame
- 2. Ceramic Facade
- 3. Mounting System
- 4. Timber Frame Element  
Back structure filled with Metesse Insulation
- 5. Wooden Slats Interior Finish
- 6. Suspended Screed  
Underfloor Heating
- 7. THQa Beam
- 8. CLT Slab  
Acoustically detached on felt strips
- 9. Curtain Wall
- 10. Water Drainage
- 11. Fiber Reinforced Concrete Facade Panel
- 12. Plants Cassette



# Detail 3

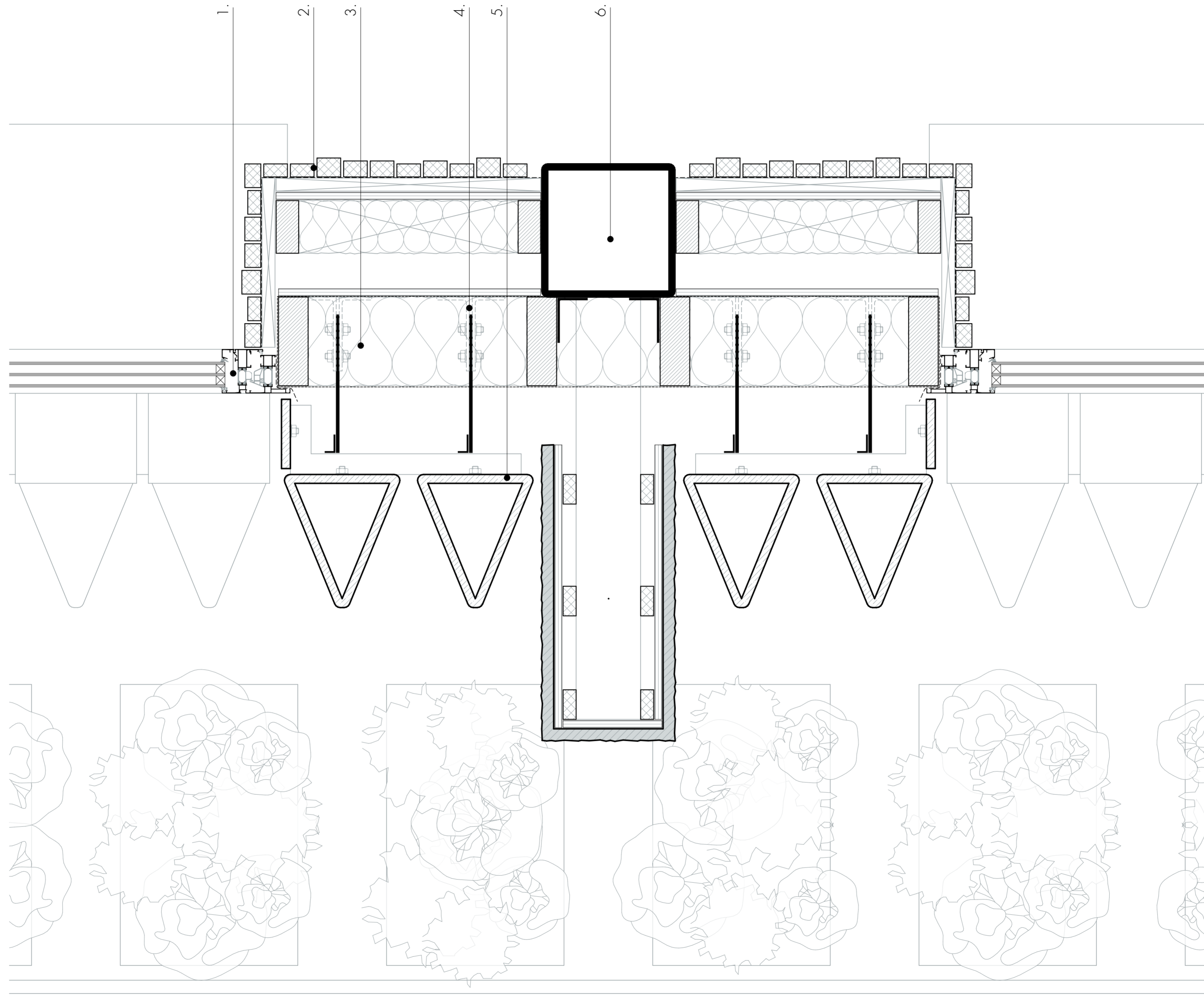
1:5



- 1. Curtain for Shading & Acoustics
- 2. Timber Baffle Ceiling
- 3. LED Lights
- 4. Mechanical Ventilation
- 5. Double Metal Stud 'Inner Box'  
Gypsum/Melesse
- 6. Aluminum Window Frame  
Triple Glazing, to be opened

# Detail 4

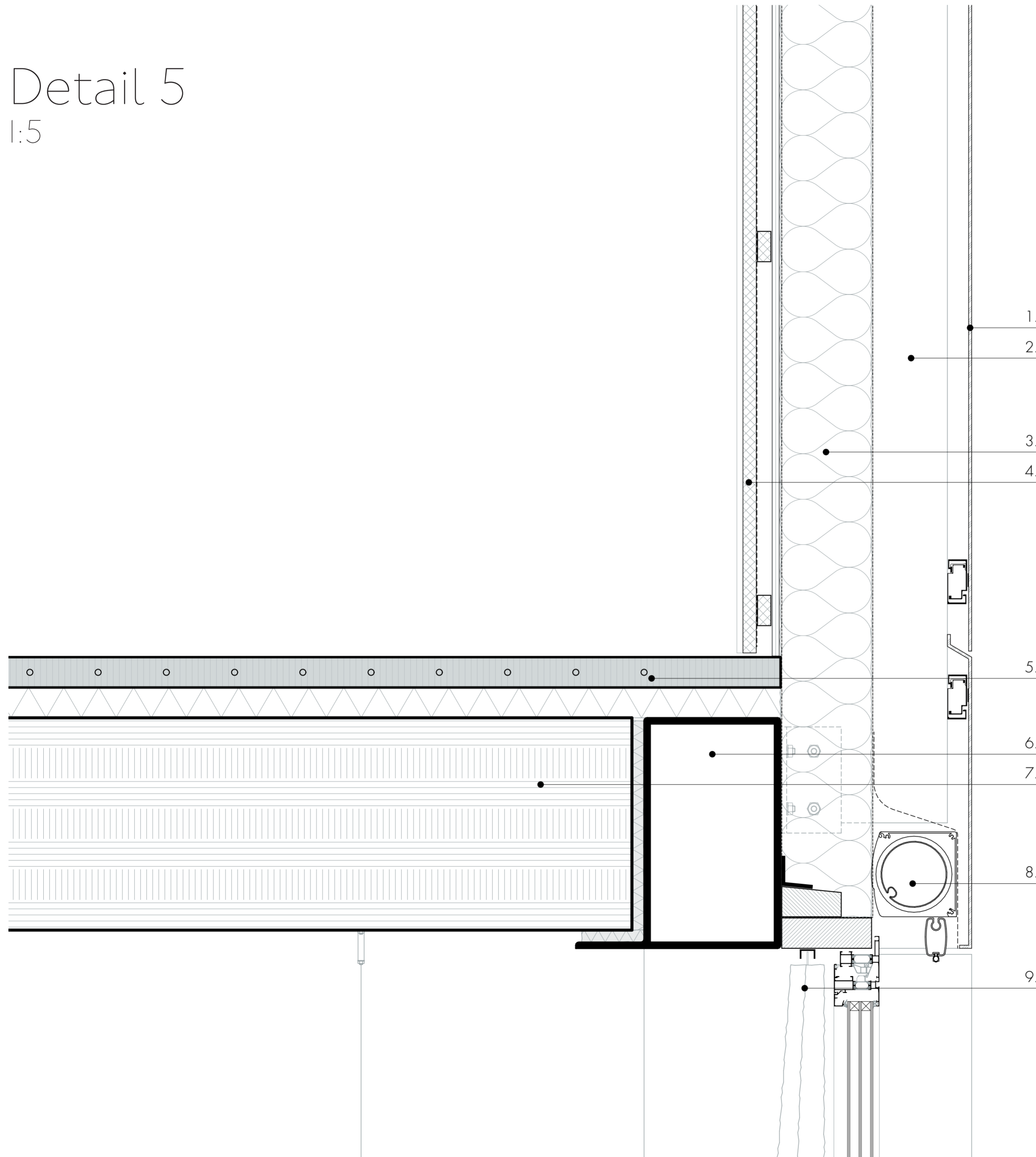
1:5



1. Aluminium Window Frame
2. Wooden Slats Interior Finish
3. Timber Frame Element  
Back structure filled with Melesse Insulation
4. Mounting System
5. Ceramic Facade
6. Steel Column

# Detail 5

1:5



1. Aluminium Facade
2. Mounting System
3. Timber Frame Element  
Back structure filled with Metesse Insulation
4. Wooden Slats Interior Finish
5. Suspended Screed  
Underfloor Heating
6. THQa Beam
7. CLT Slab  
Acoustically detached on felt strips
8. Integrated Sunscreen
9. Curtain