

MAAS LIBRARY - STORAGE OF IDEAS

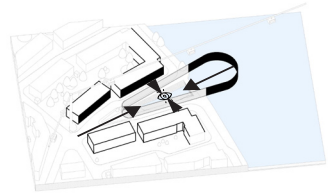
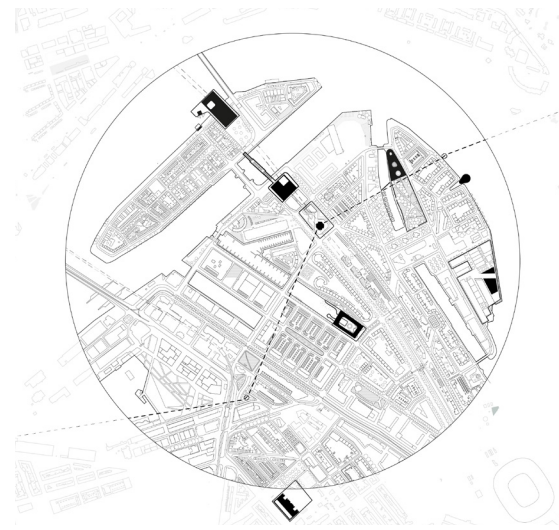
XIANG FANG 5021235

How to translate the concept
of storage of ideas into
a collective building of
knowledge and information?

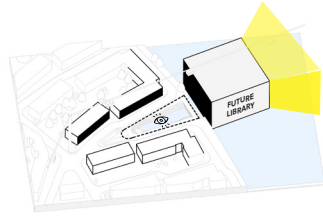


Introduction

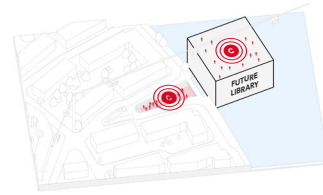
South of Rotterdam as the testbed offers the challenges and opportunities for the project of Maas library. In consideration of the social context of Rotterdam south (Kop van Feijenoord), the project uses a modern panopticon as the metaphor of the Maas library. The design question is "How to use spatial qualities of the panopticon to design the knowledge creative activities of the Maas library?" The design themes are publicity, centrality and permeability.



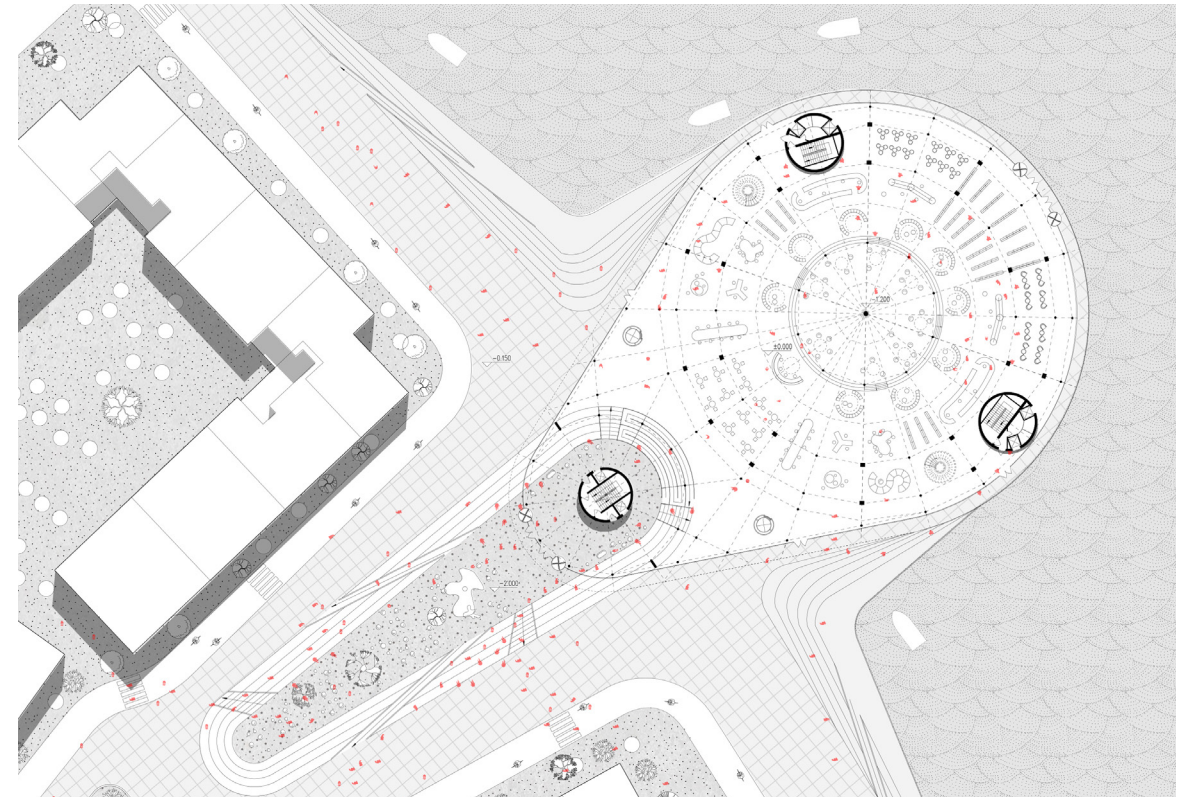
BORDERS



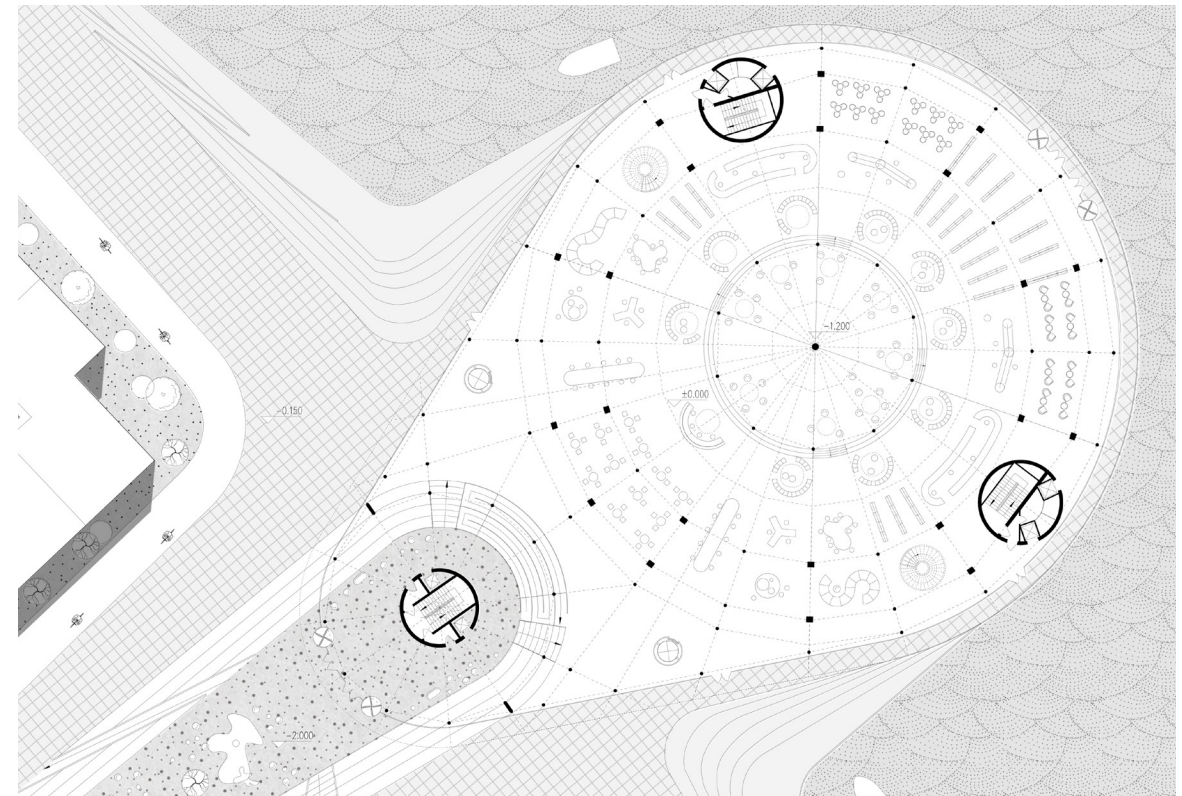
PUBLICITY: ON THE WATER



CENTRALITY & PERMEABILITY



1:500 URBAN IMPLEMENTATION



1:200 GROUND FLOOR PLAN

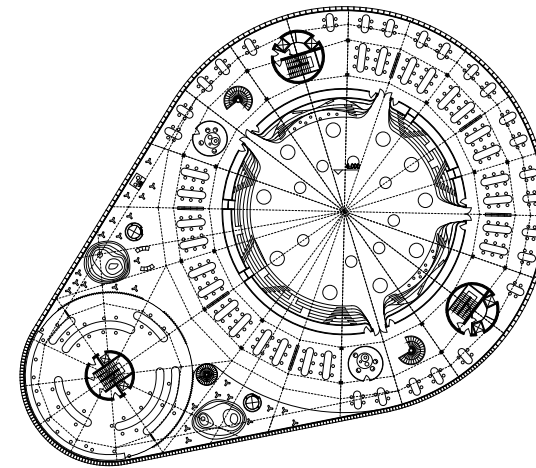
Design Scheme

The Maas library is a 10,000 m² building, located in the Feijenoordhaven, Kop van Feijenoord. The building program is distributed in two centres with different identities, which is composed of: 1 performative space (knowledge labs, makerspace, workshop), 2 learning space, 3 inspiring space (exhibition), 4 civic engagement space (sunken plaza & ground floor), 5 rental office, 6 excess storage (digital & physical).

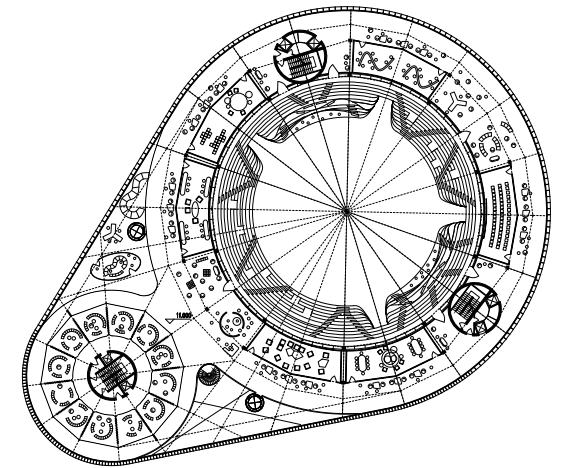
The project redefines the Maas library as the container of knowledge creative activities- are organized in a way of centrality. Centrality in the Maas library is conceived as the different interpretation of central space: centralized atrium, digital lab, creative idea platform, panorama exhibition platform, and auditorium for the creative class.

The first operation is to consolidate the library's proliferated activities. The principle of program organization is to develop from publicity (Ground floor) to professionalism (top floor). For example, the civic engagement space (ground floor), learning area & kids (first floor) are open to the public. On the upper floor, makerspace, working studio and rental office become more professional, which are designed for the professional users.

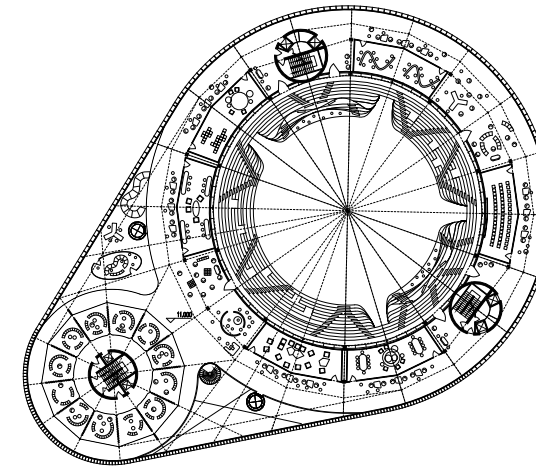
Two plan principles are proposed to organize different programs. Firstly, inspiration activities are architecturally defined in the center. Through designing different types of activities in the centralized space, the manifesto of the Maas library, where knowledge creation activities are the main focus, will be strengthened. Secondly, Functional spaces are distributed in the surrounding. The Radioactive layout of the functional spaces follows the principle of centrality and strengthens the connection between inside and outside.



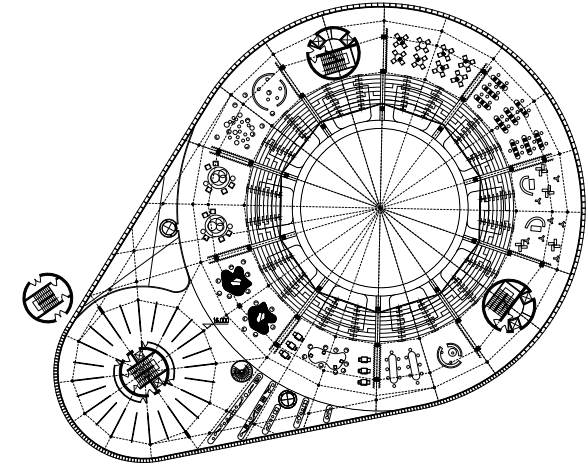
1:200 6M PLAN



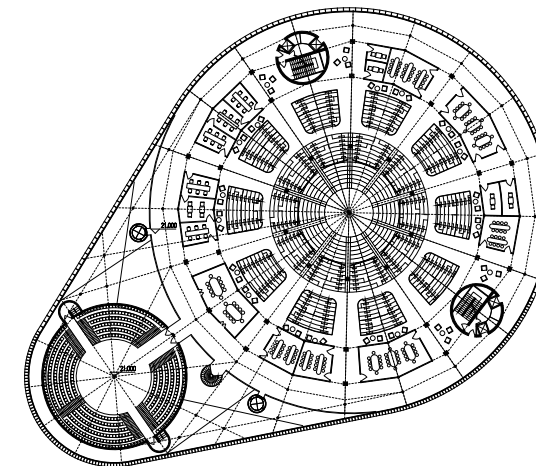
1:200 11M PLAN



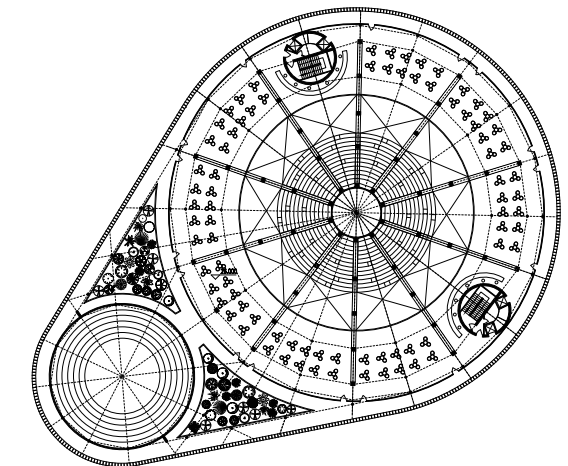
1:200 16M PLAN



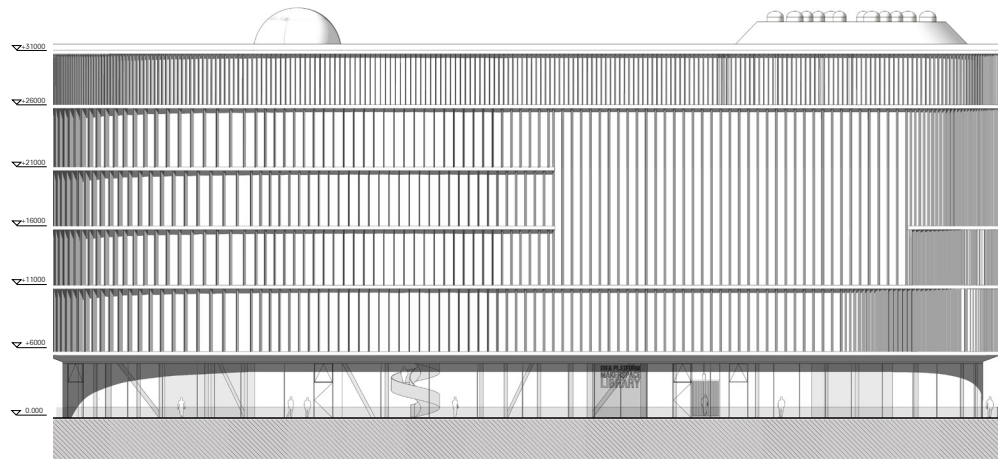
1:200 21M PLAN



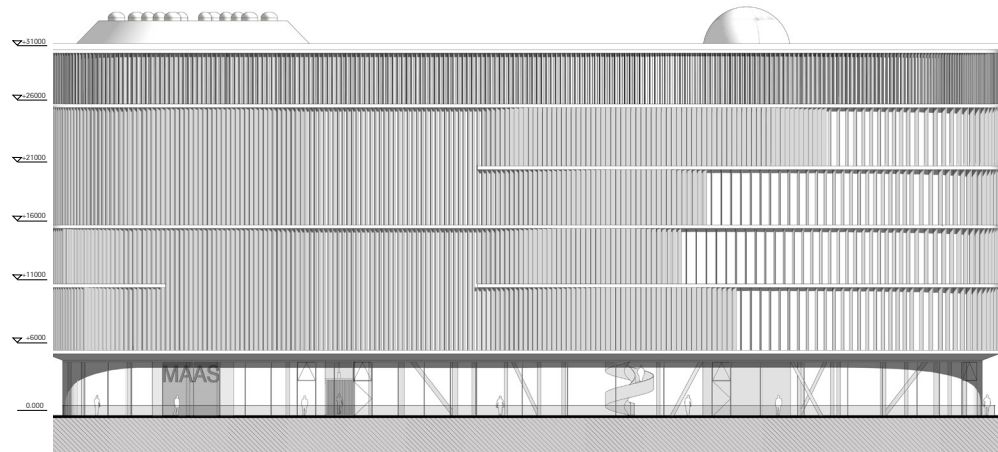
1:200 26M PLAN



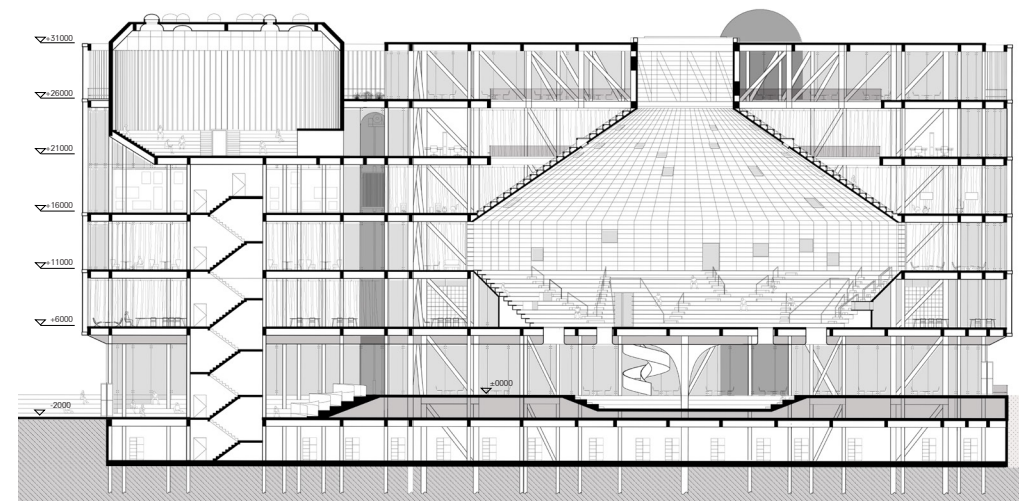
1:200 31M PLAN



1:200 NORTHERN FACADE



1:200 SOUTHERN FACADE



1:200 LONGITUDINAL SECTION

