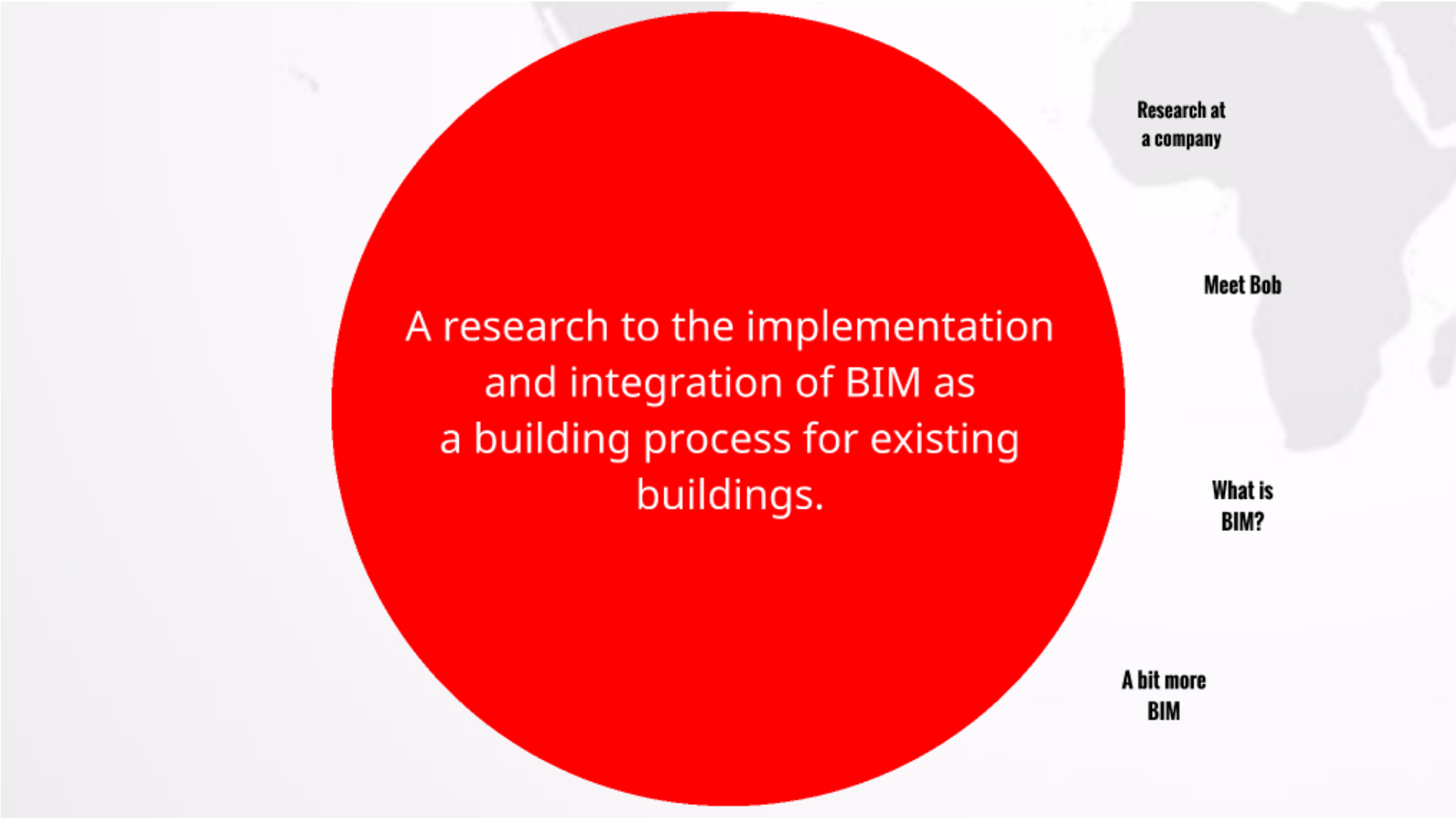


# BIMplementation BIMtergration



P5 Presentation  
Paul J van Berkel



A research to the implementation  
and integration of BIM as  
a building process for existing  
buildings.

**Research at  
a company**

**Meet Bob**

**What is  
BIM?**

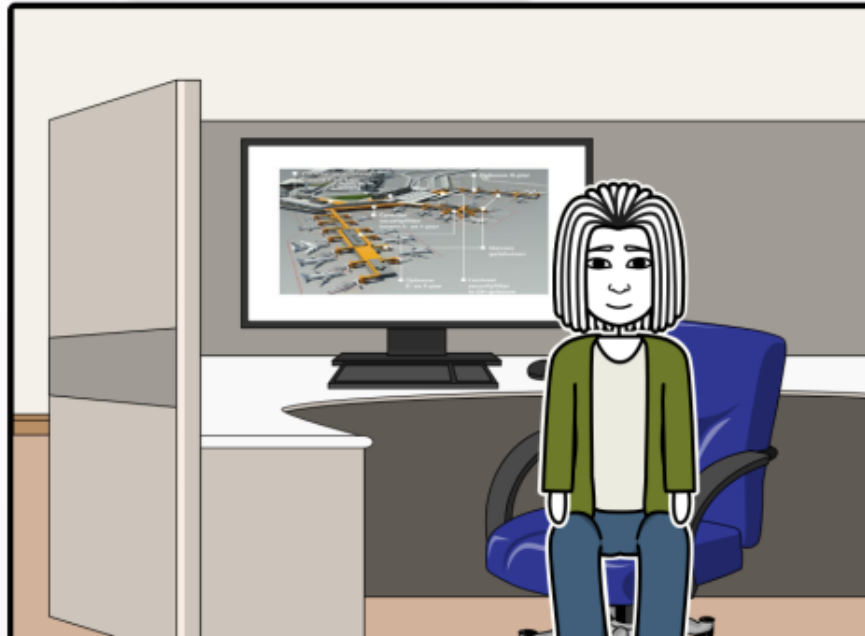
**A bit more  
BIM**

# Research at a company

Fascination with airports  
Largest building in the Netherland  
Round the clock operation  
VolkerWessels Bouw Schiphol  
Upgrade Wortel g-pier



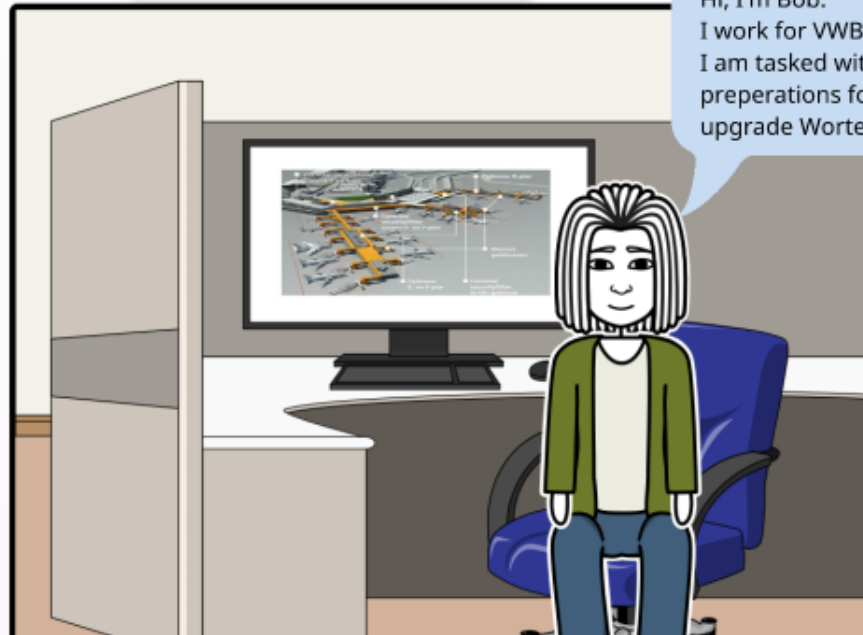
## Meet Bob



## Meet Bob



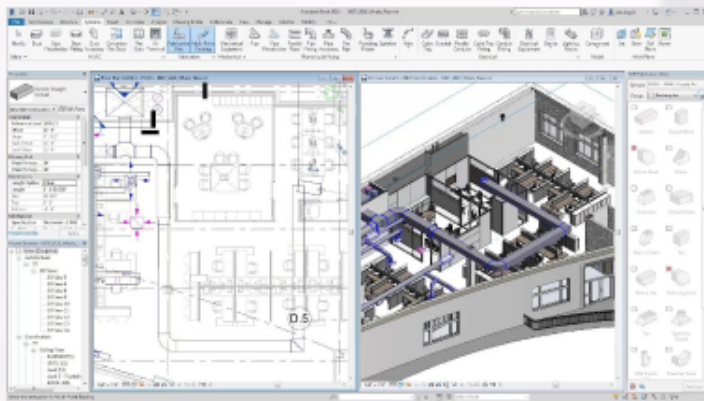
## Meet Bob

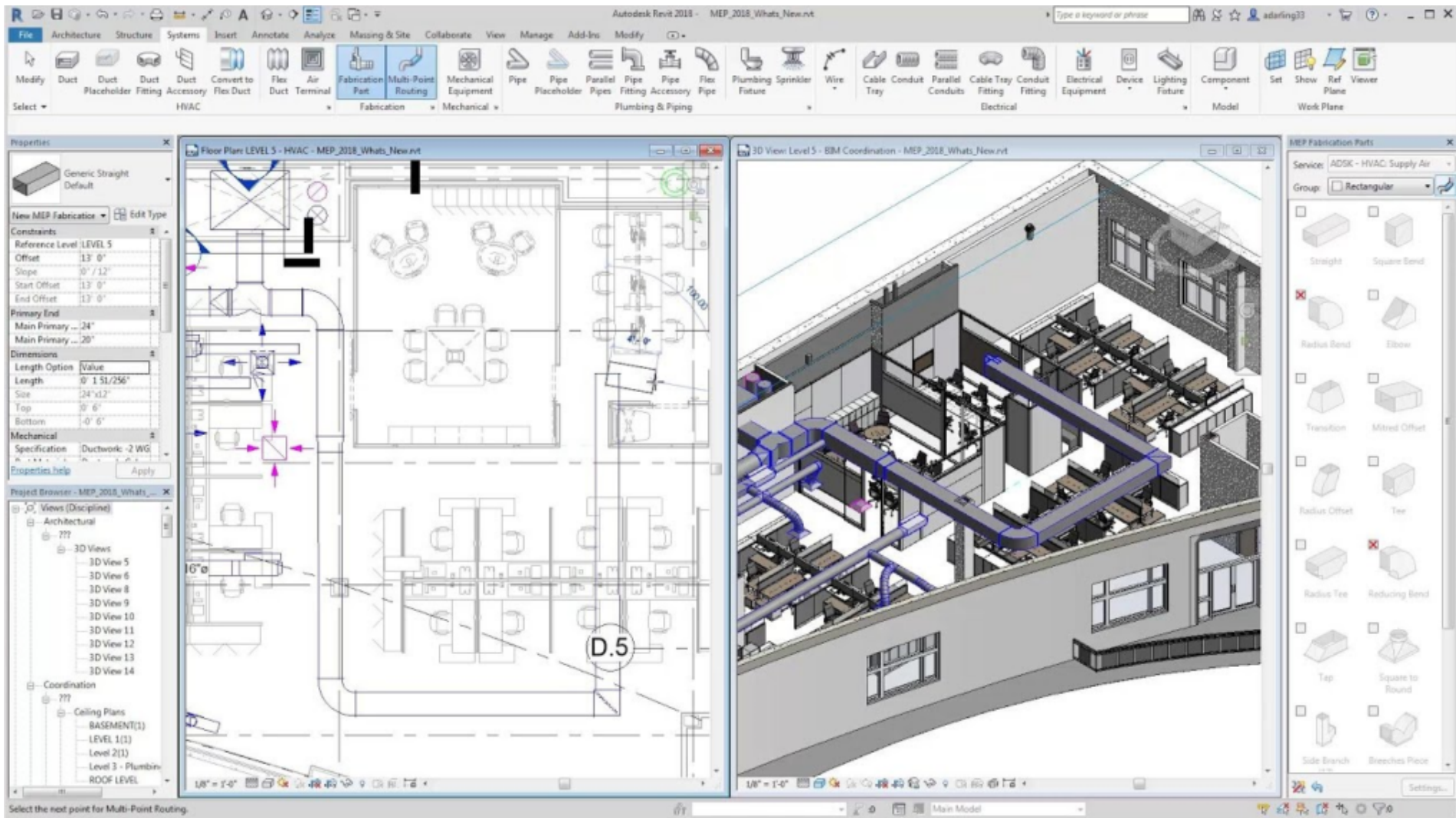


Hi, I'm Bob.  
I work for VWBS.  
I am tasked with work  
preparations for the  
upgrade Wortel g-pier.

# What is BIM?

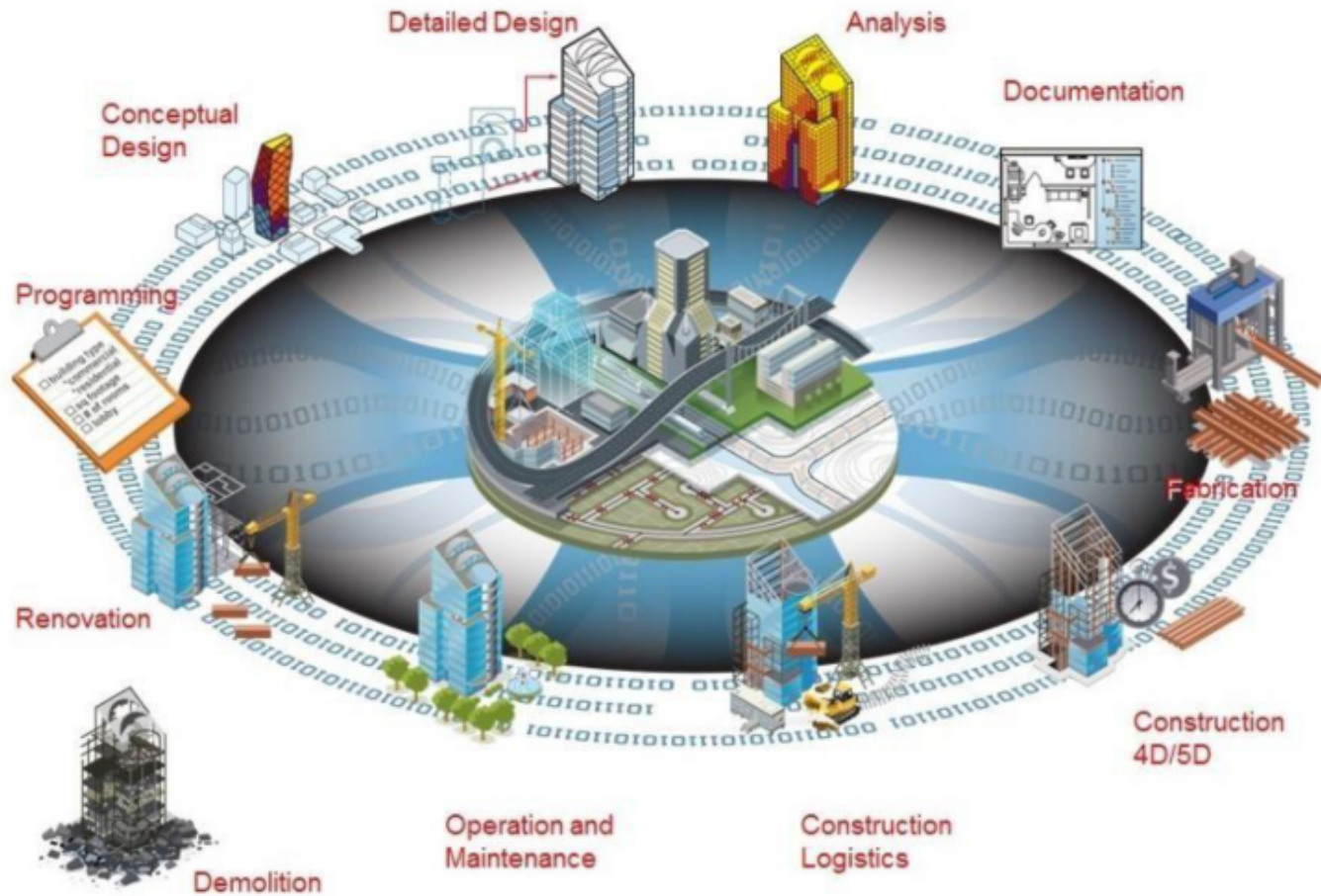
- Building Information Modeling
- Technology versus Social
- Modern method of project management





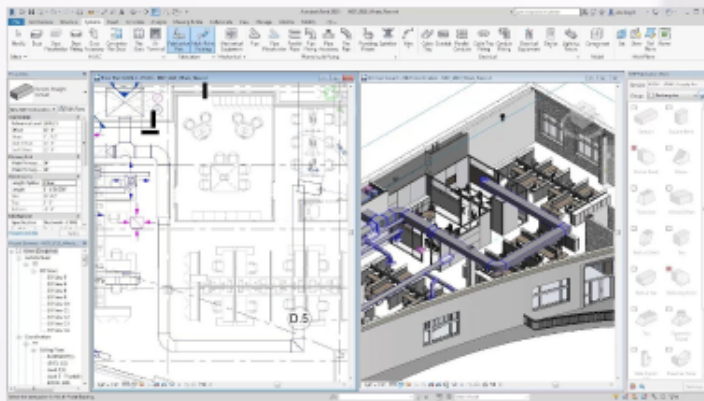


# Building Information Modeling Process



# What is BIM?

- Building Information Modeling
- Technology versus Social
- Modern method of project management





## A bit more BIM

- Building Information Modeling (BIM) is **the process of creating and managing** 3D building data during its development. BIM is a complex **multiphase process** that gathers input from team members to model the components and tools that will be used during the construction process to create a unique perspective of the building process.

- The 3D process is aimed at achieving savings through **collaboration and visualization** of building components into an early design process that will dictate changes and modifications to the actual construction process. It is a very powerful tool that when used properly will **save money, time and simplify** the construction process.

## Building Information Modeling Process



## BIMplementation BIMtergration



P5 Presentation  
Paul J van Berkel

# Upgrade Wortel g-pier

“How can BIM be optimally used as a building process when considering a building which already exists and is constantly being transformed?”

Interviews

Current situation

The BIM theory

Back to Bob

# Interviews



13 INTERVIEWS



FINDING OUT FIRST HAND  
WHAT THE VISION OF EVERY  
COMPANY IS



FINDING OUT HOW EVERY  
COMPANY EXPERIENCED  
THE COLLABORATION  
DURING THIS PROJECT



SUMMARIZING THE RESULTS

# The interviewed companies





# Company versus BIM

Company Name	Willingnes to work in a BIM environment	General BIM knowledge
Schiphol ASM	HIGH	HIGH
Schiphol Consumers	-	NONE
Schiphol Security	-	NONE
Schiphol Operations	-	NONE
PLuS	LOW	MEDIUM
BenthamCrowell	LOW	HIGH
DEERNS	HIGH	HIGH
ABT	MEDIUM	HIGH
RHDHV	MEDIUM	HIGH
VWBS	HIGH	HIGH
ENGIE	MEDIUM	HIGH
BAM	LOW	MEDIUM
KONE	LOW	LOW

# The current situation



DIFFERENCE BETWEEN  
BIM AS PROCESS AND  
BIM AS TOOL



THE COMPANIES  
INVOLVED AND  
COMMUNICATION



TRADITIONAL  
HIERARCHY

# The BIM theory



DIFFERENCE BETWEEN  
BIM AS PROCESS AND  
BIM AS TOOL



THE COMPANIES  
INVOLVED AND  
COMMUNICATION



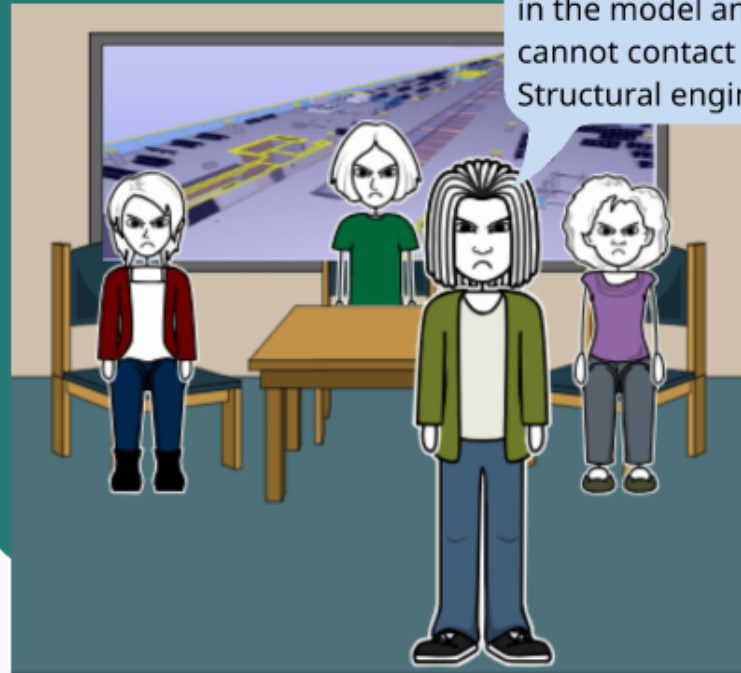
TRADITIONAL  
HIERARCHY

## Back to Bob



## Back to Bob

There are problems in the model and I cannot contact the Structural engineer



# BIMplementation BIMtergration



P5 Presentation  
Paul J van Berkel

# The actual situation

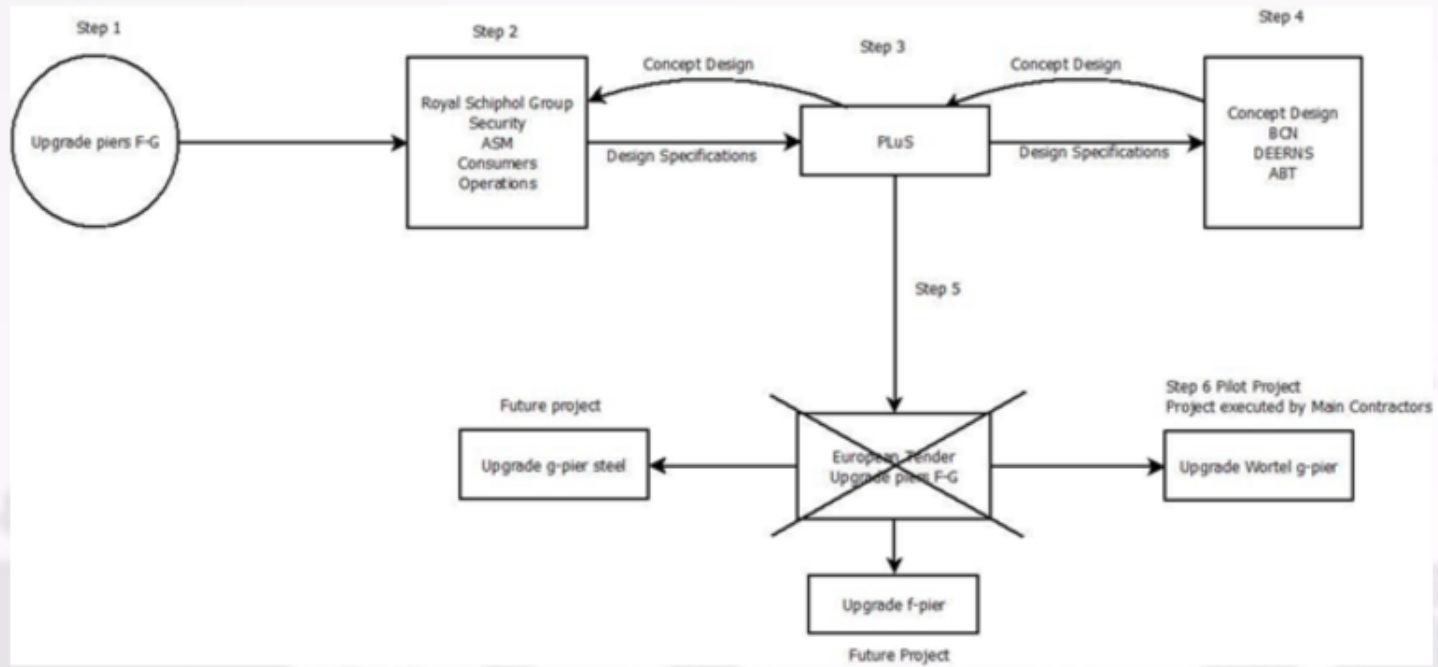


**The design  
phase**

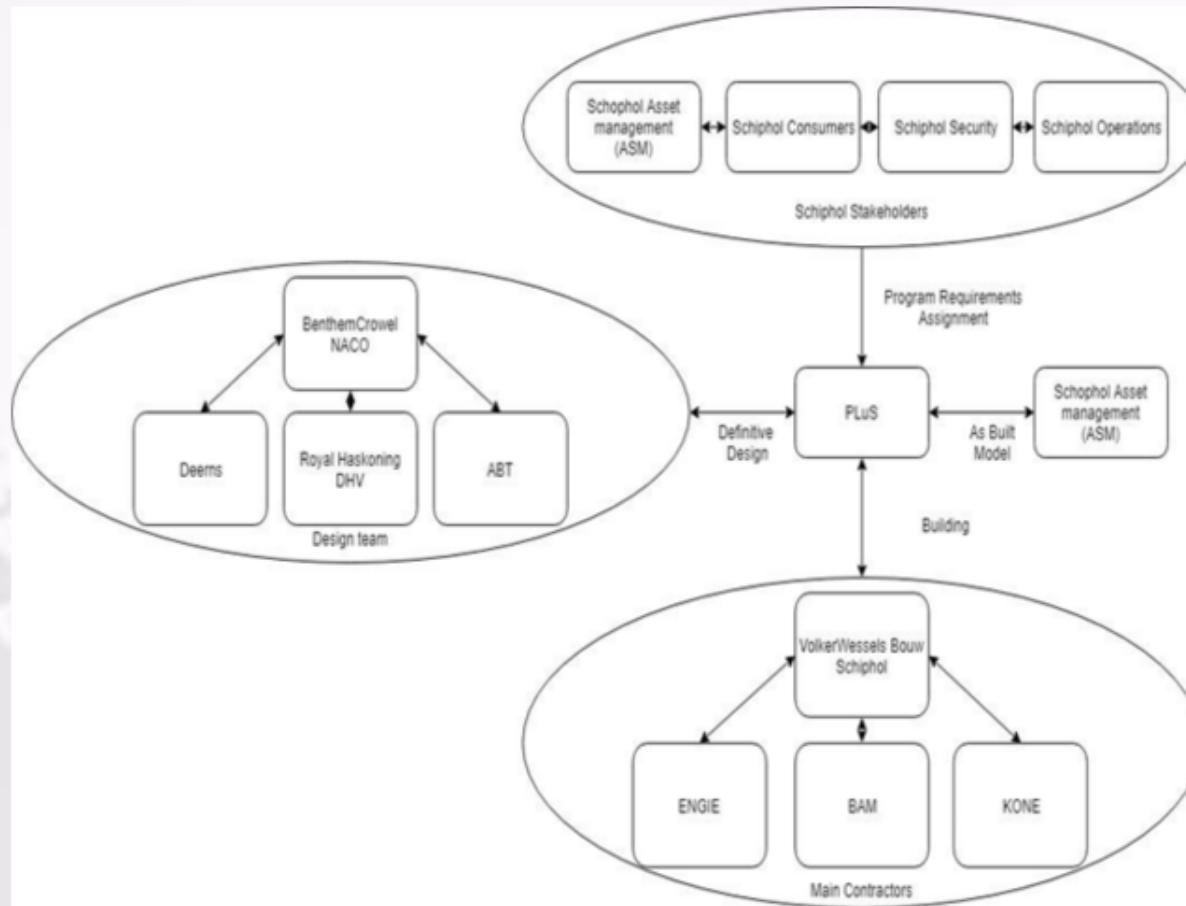
**The building  
process**

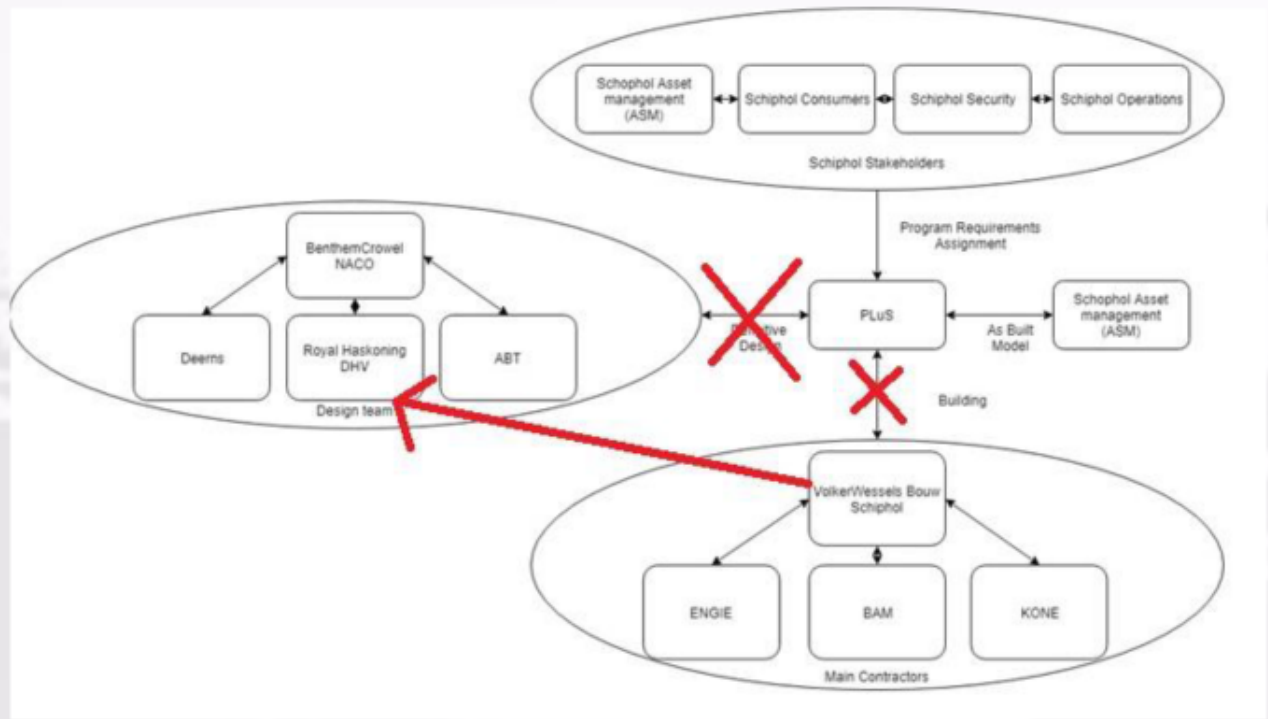
**Why is Bob  
mad?**

# The design phase









## BIMplementation BIMtergration



P5 Presentation  
Paul J van Berkel

# What should have been



**The BIM  
circle**

**PLuS**

**The  
benefits  
of BIM**

**A new project  
manager**



# What should have been



**The BIM  
circle**

**PLuS**

**The  
benefits  
of BIM**

**A new project  
manager**



# What should have been



**The BIM  
circle**

**PLuS**

**The  
benefits  
of BIM**

**A new project  
manager**

When companies work together problems can be solved before the actual building stage.



# What should have been



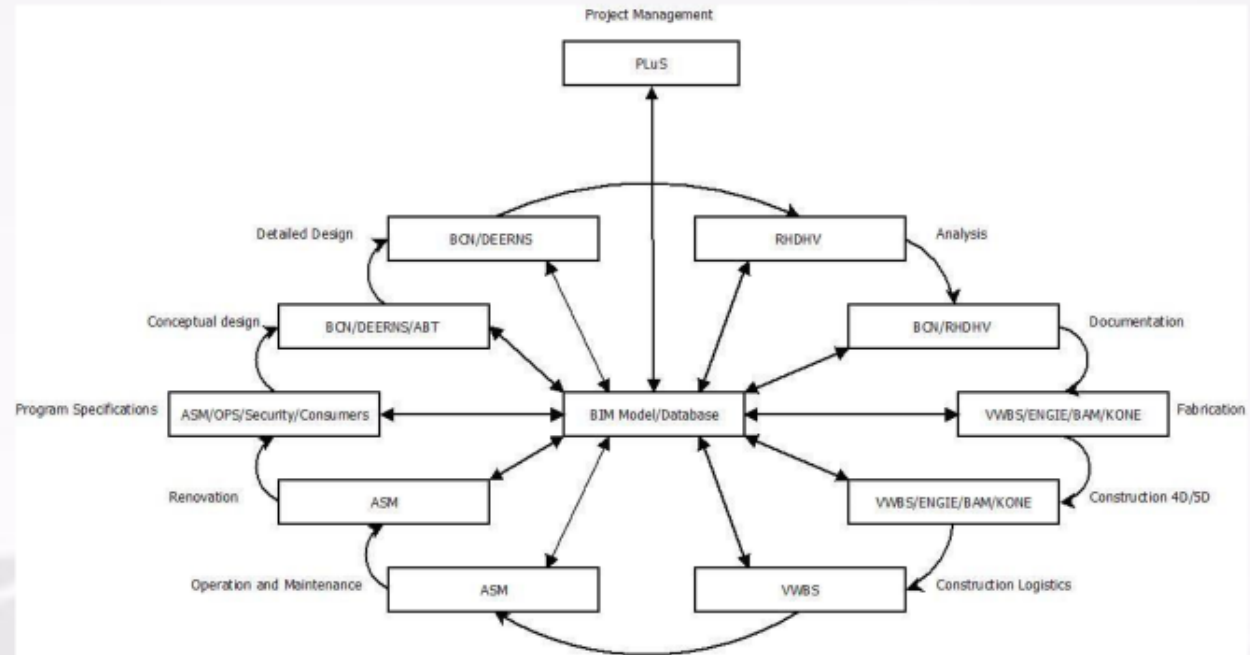
**The BIM circle**

**PLuS**

**The benefits of BIM**

**A new project manager**

# The BIM circle



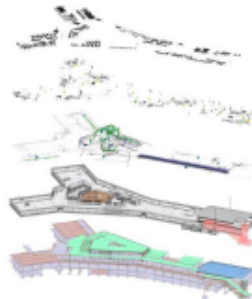


# PLuS

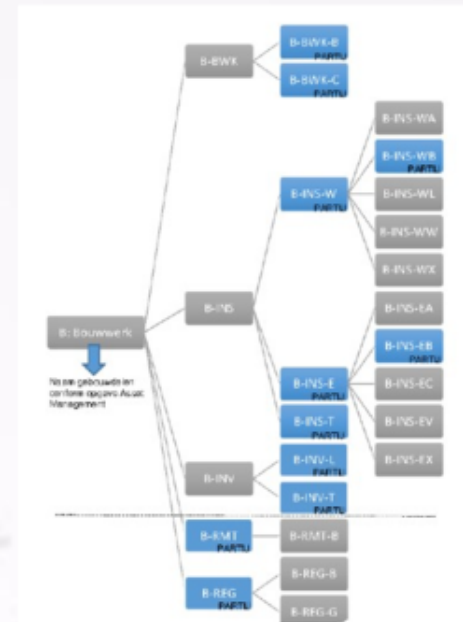
## Samenwerken in BIM

5 disciplines:

- Inrichting interieur
- Inrichting bouwkundig
- Installatie aanpassingen
- Bouw bestaand
- Constructies bestaand



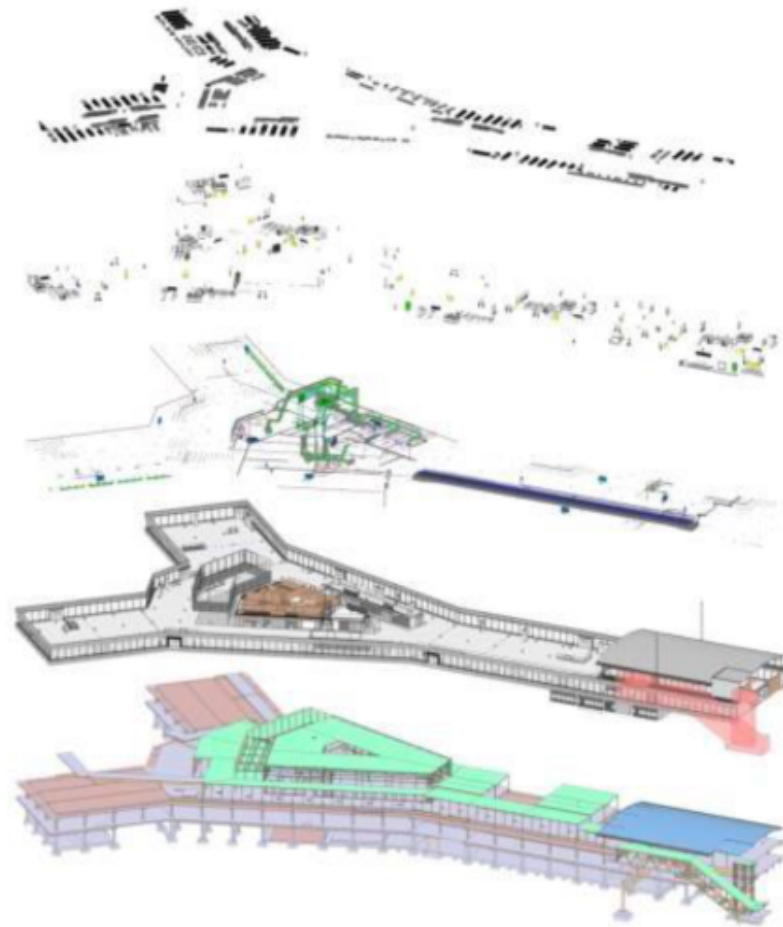
Utrechtse Poort D-0



# Samenwerken in BIM

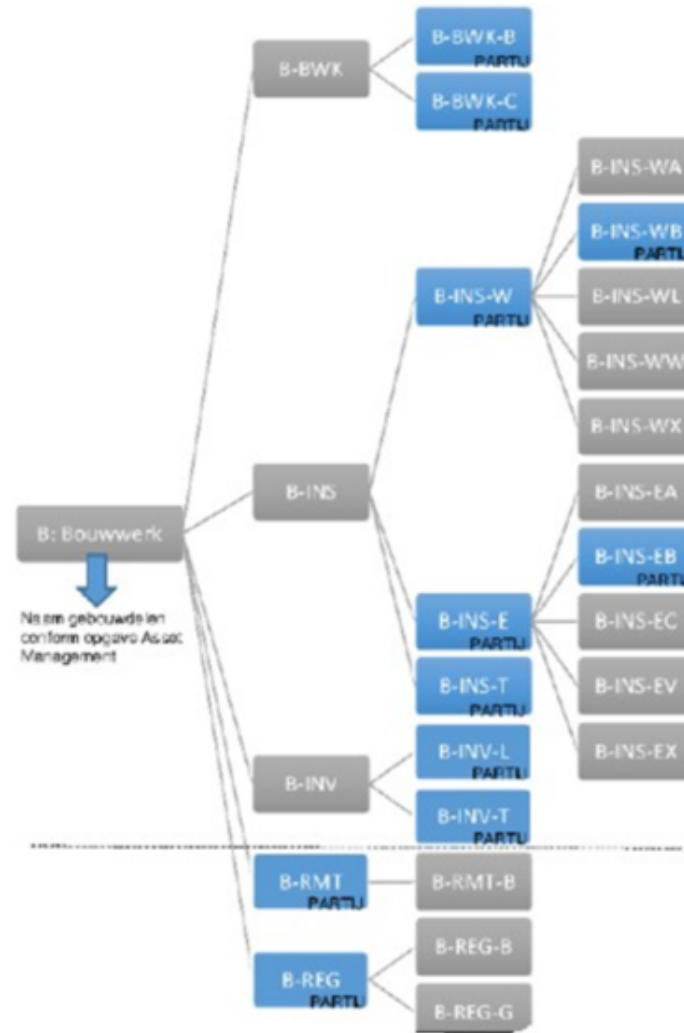
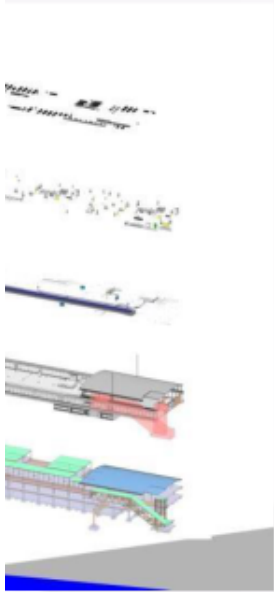
5 disciplines:

- Inrichting interieur
- Inrichting bouwkundig
- Installatie aanpassingen
- Bouw bestand
- Constructies bestand



Upgrade Pieren D-G



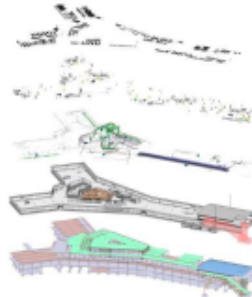


# PLuS

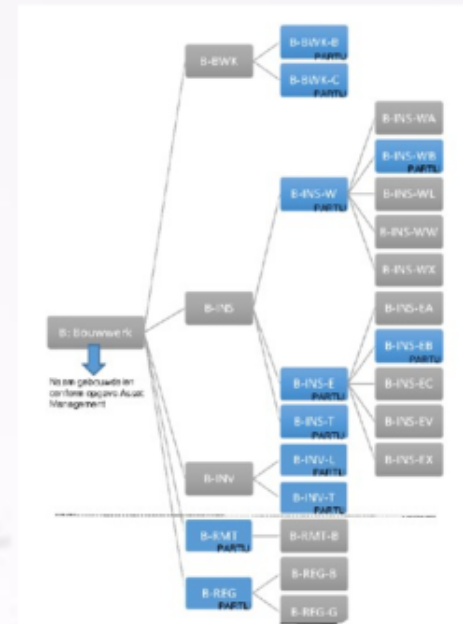
## Samenwerken in BIM

5 disciplines:

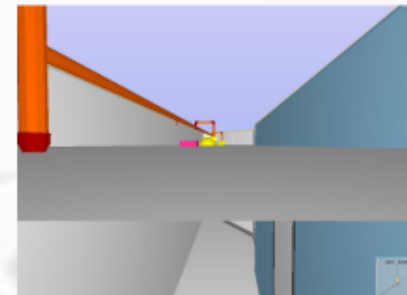
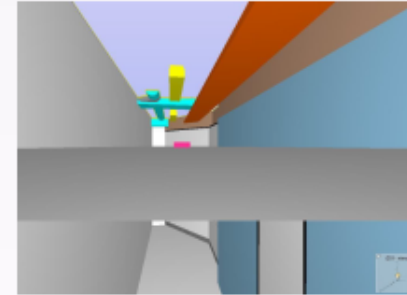
- Inrichting interieur
- Inrichting bouwkundig
- Installatie aanpassingen
- Bouw bestaand
- Constructies bestaand

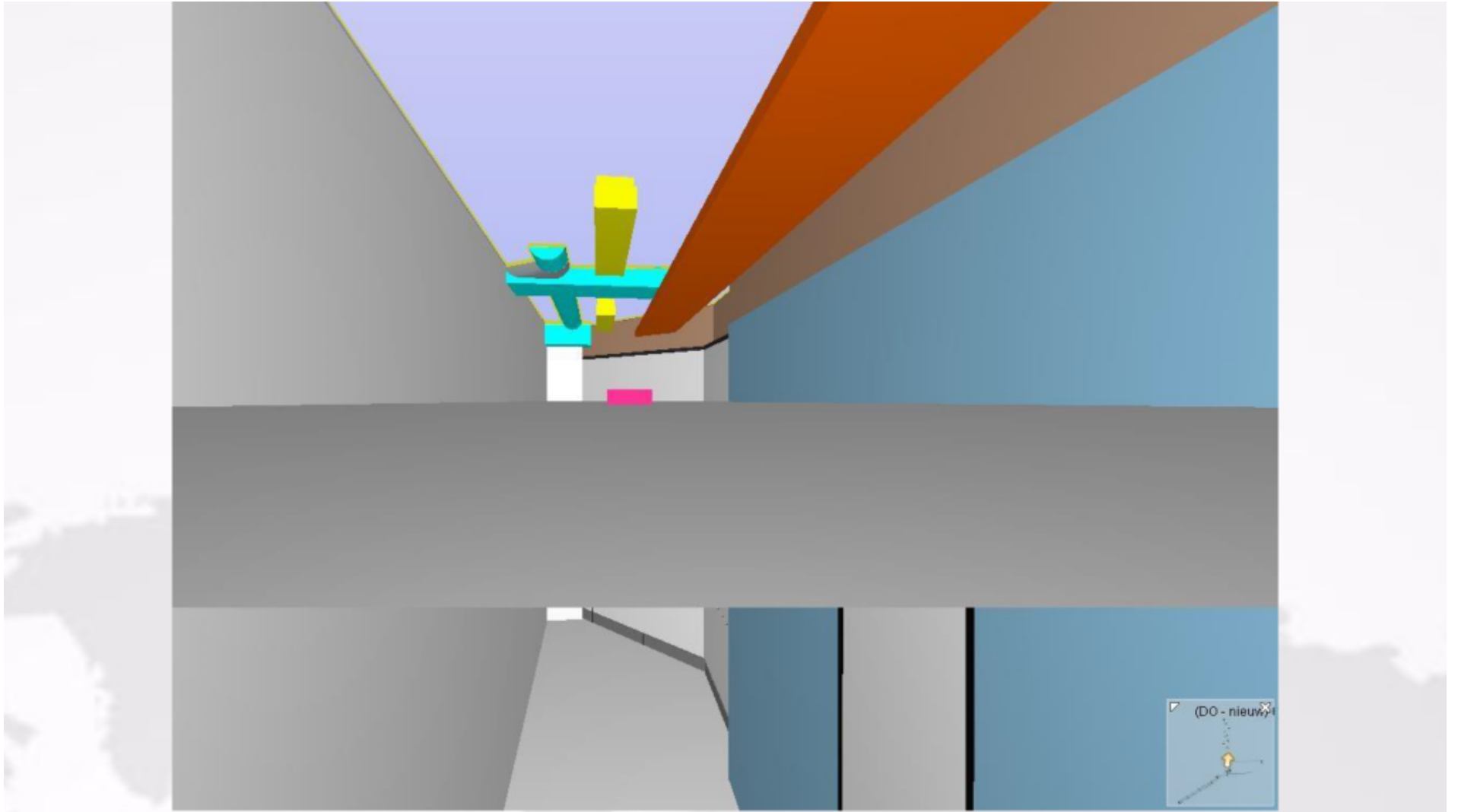


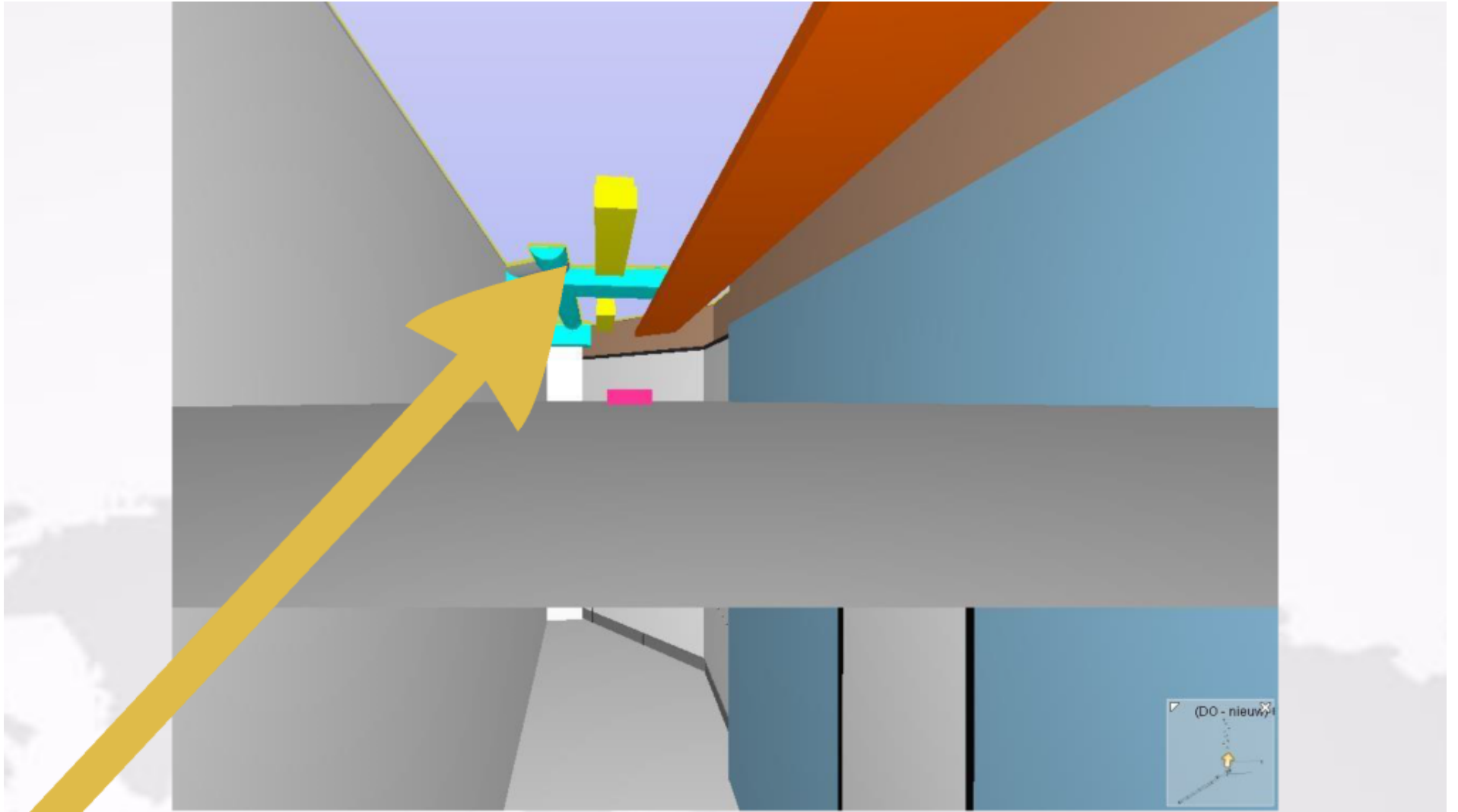
Utrechtse Poort D-0



# The benefits of BIM

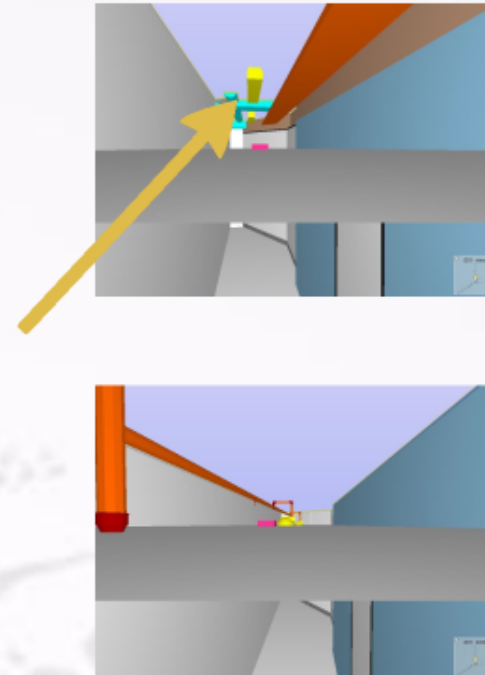


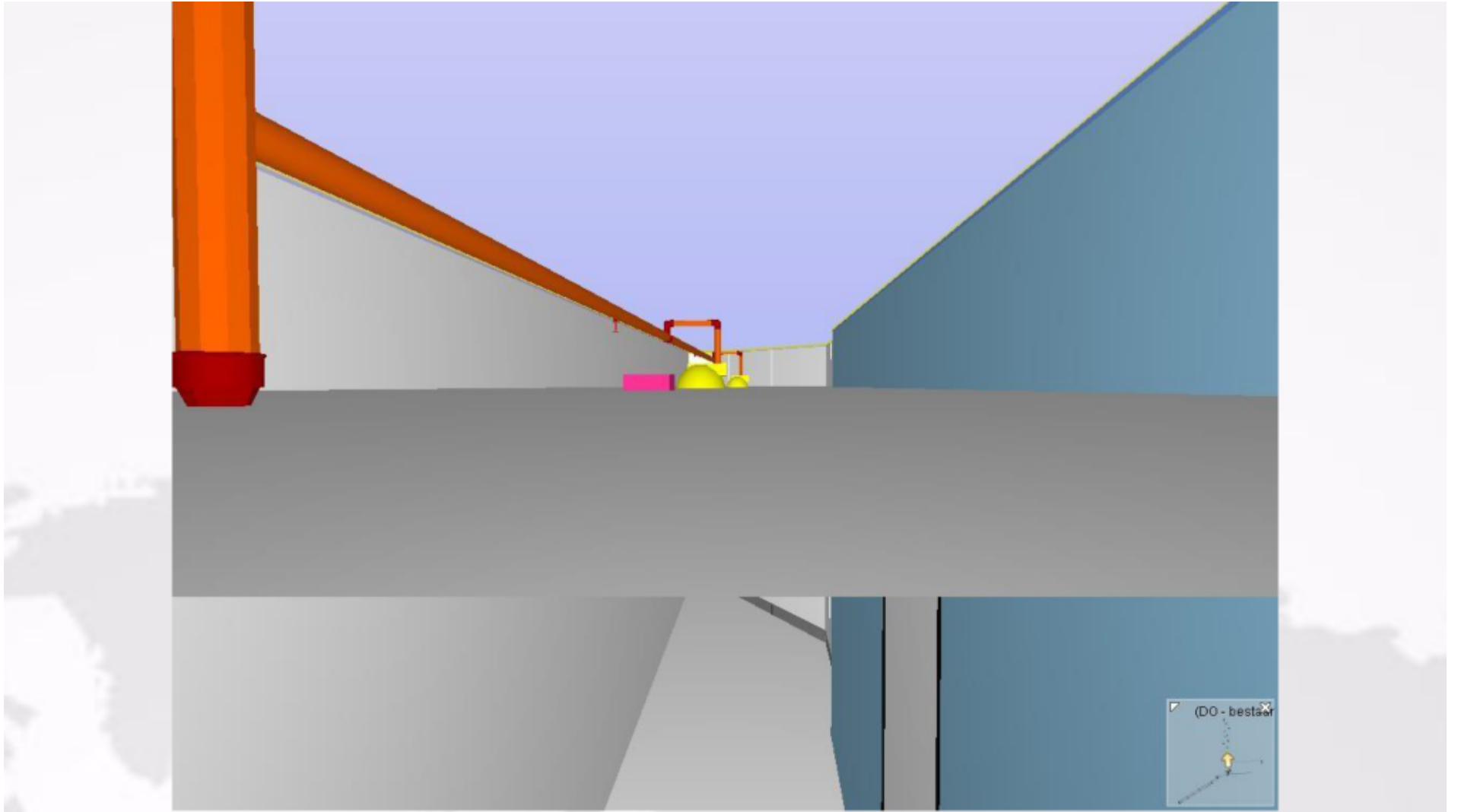


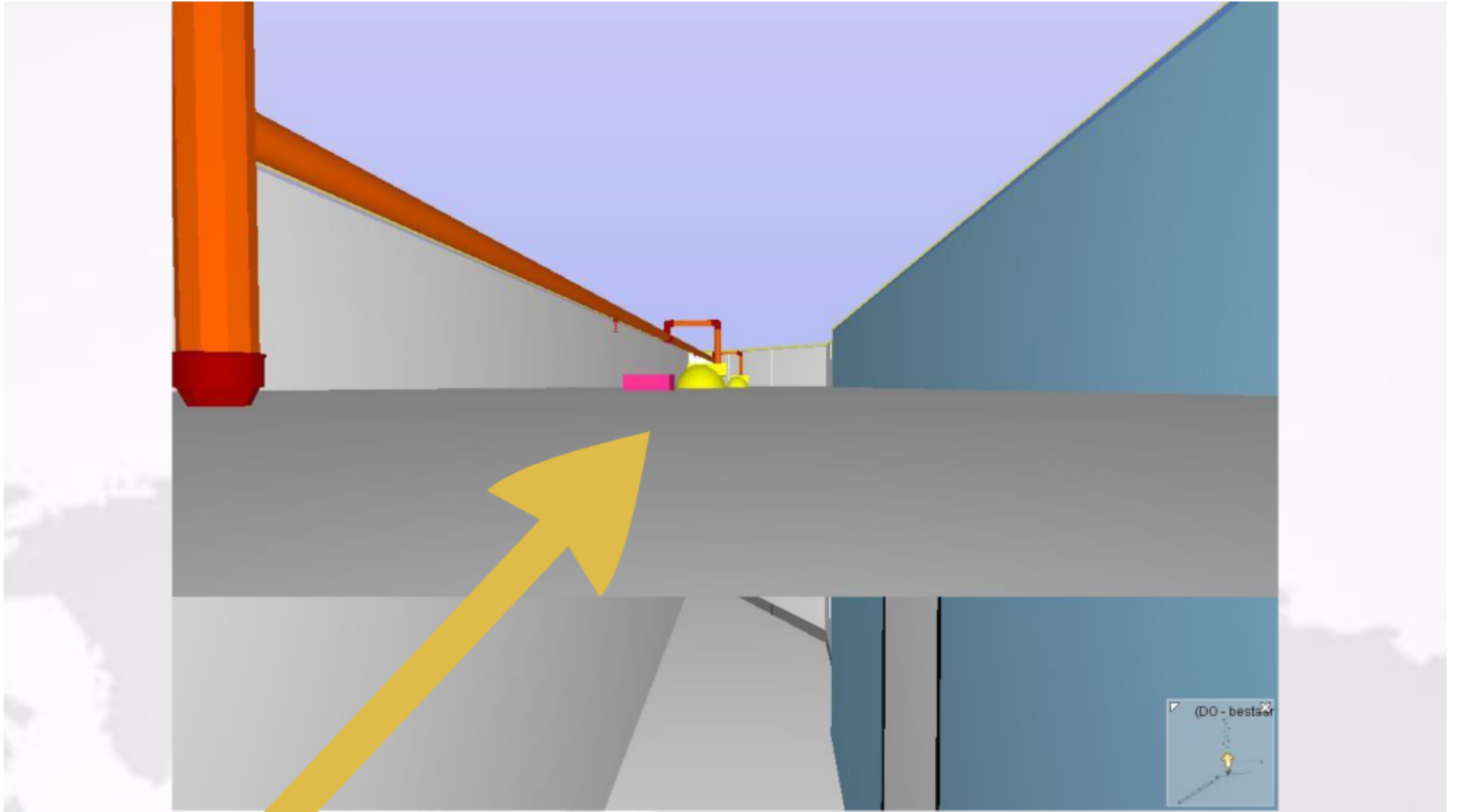




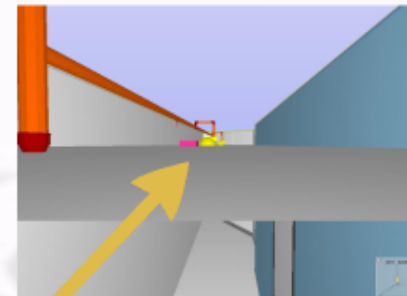
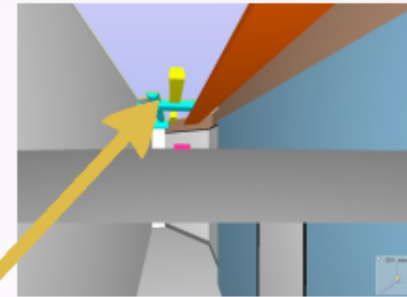
# The benefits of BIM



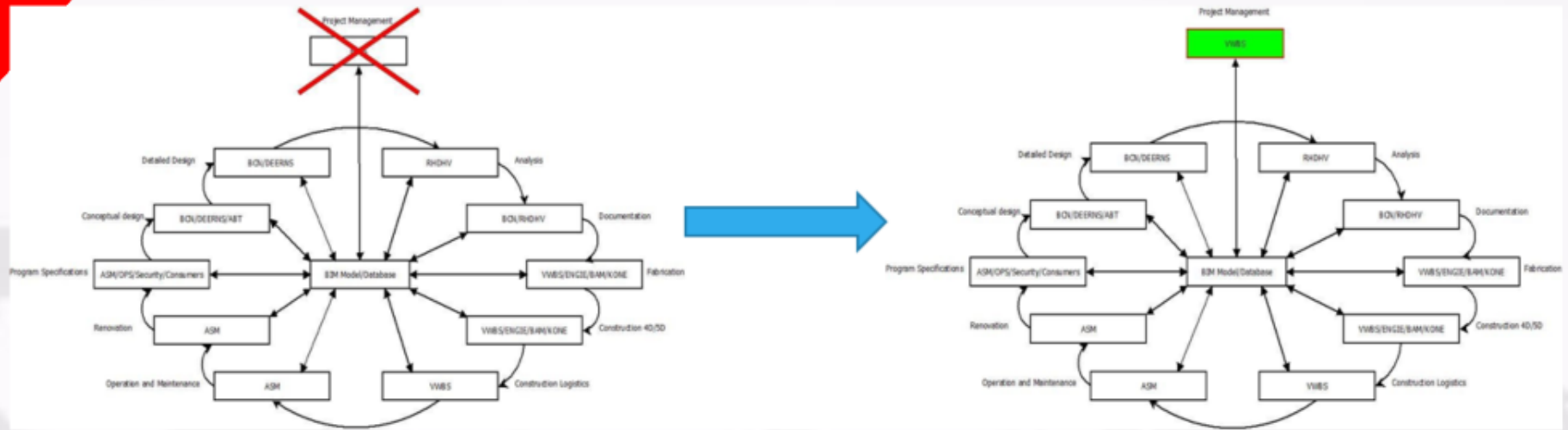




# The benefits of BIM



# A new project manager



# BIMplementation BIMtergration



P5 Presentation  
Paul J van Berkel

# The BIM collaboration

The  
quadrants

Collaboration

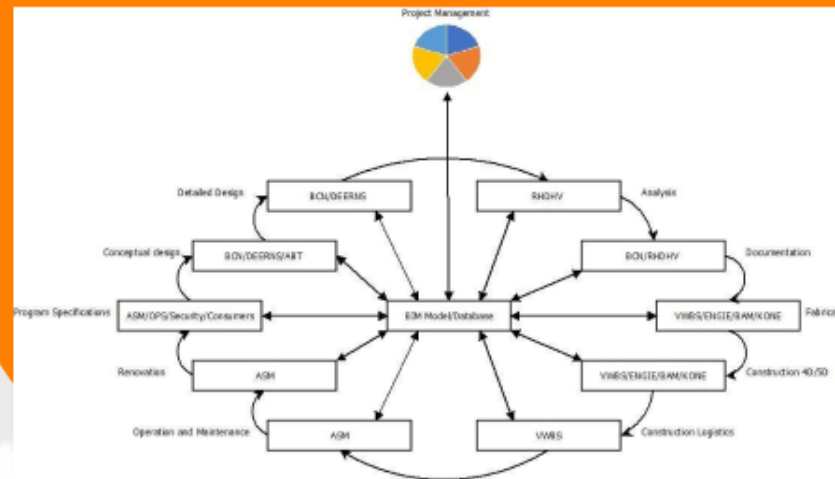
Back to Bob

# The BIM collaboration

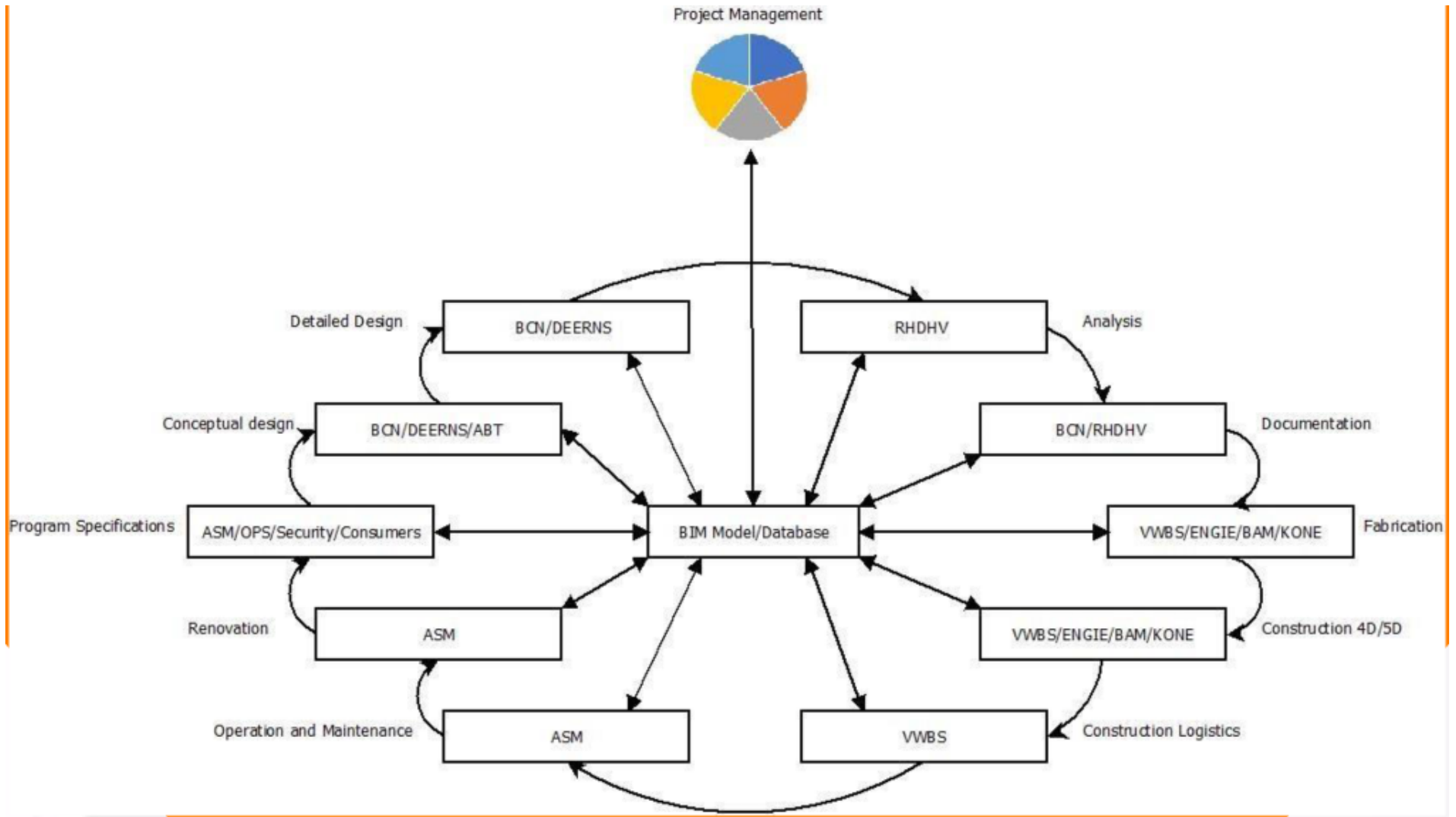
The quadrants

Collaboration

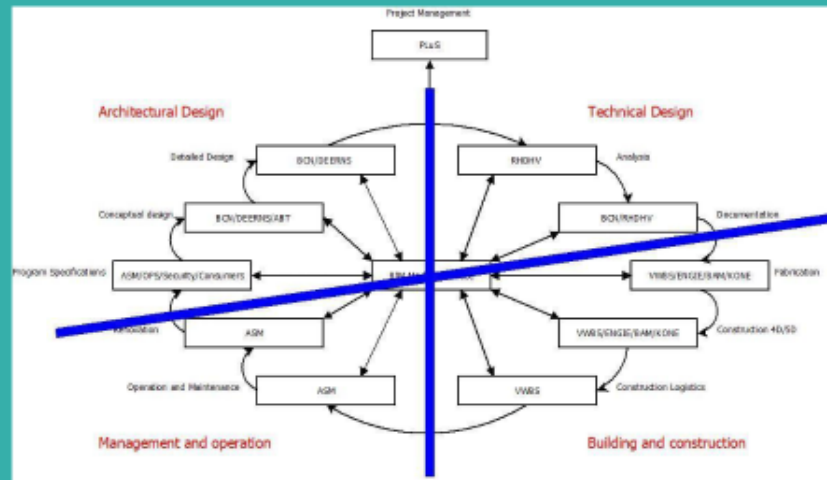
Back to Bob

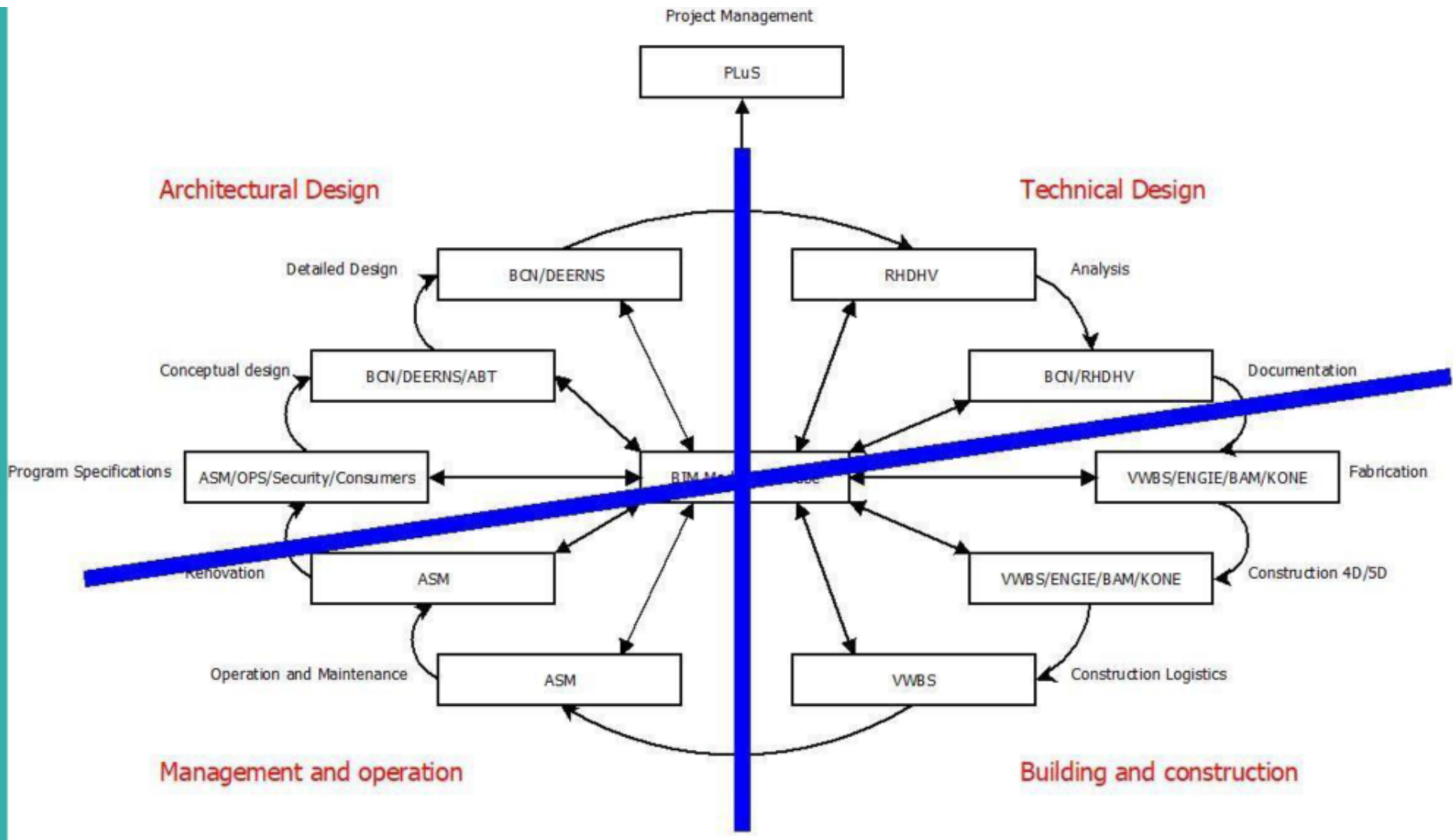




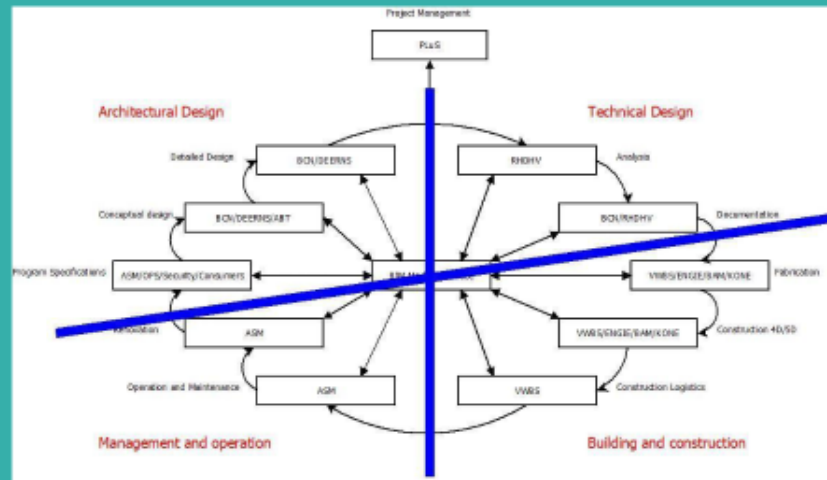


# The quadrants

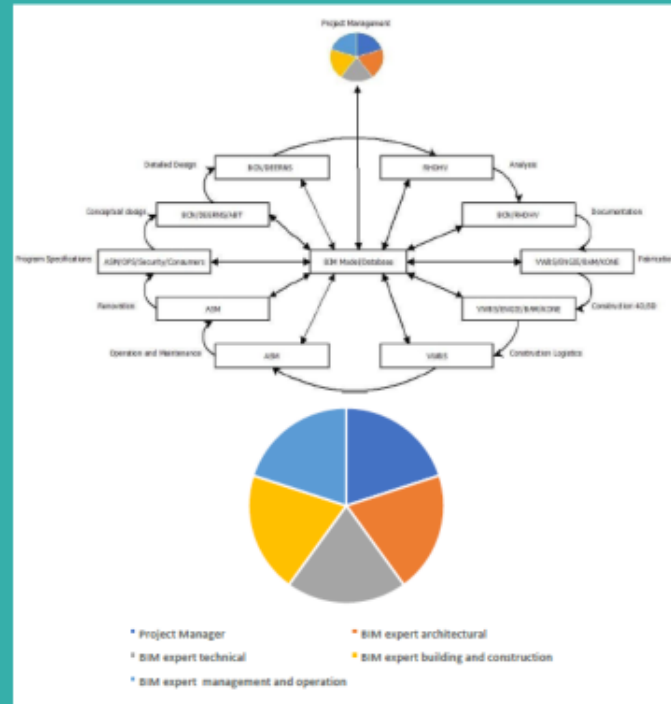




# The quadrants



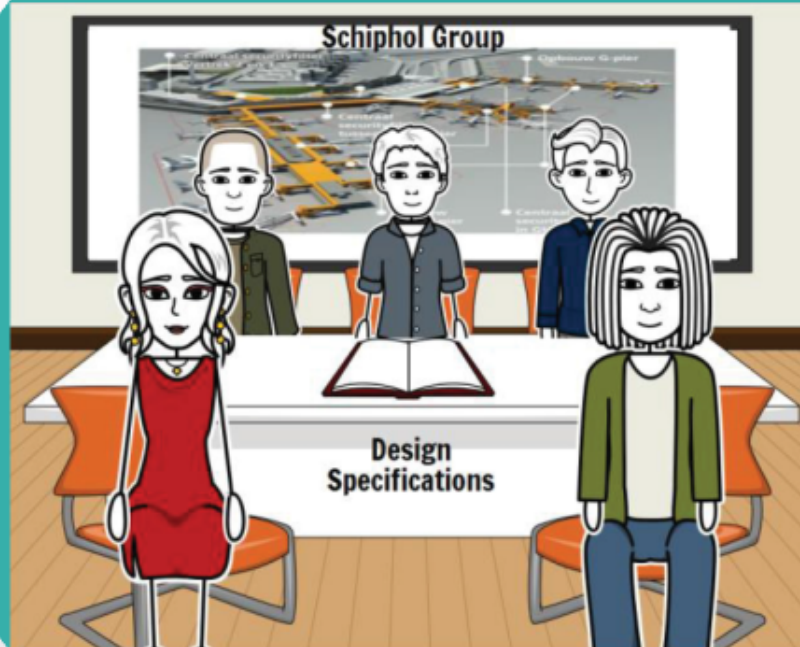
# Collaboration





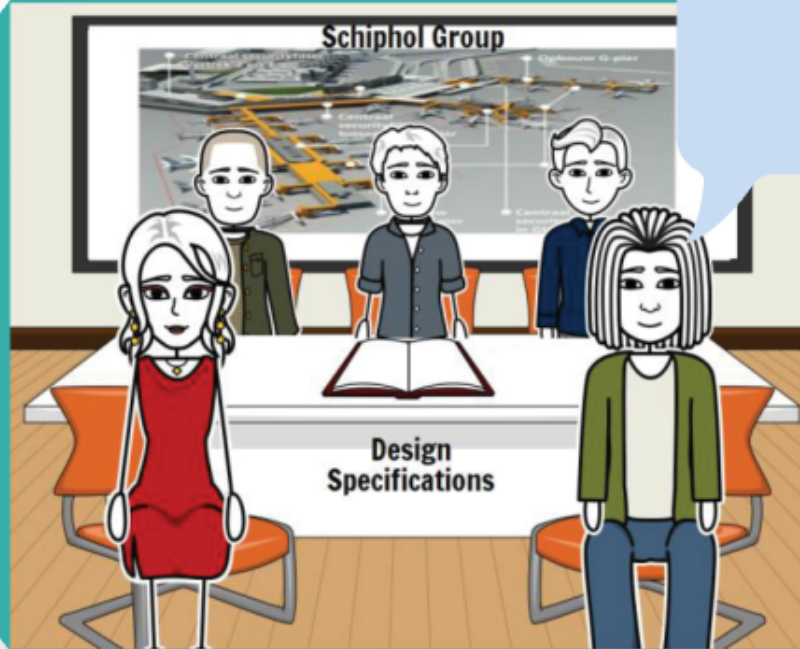
- Project Manager
- BIM expert technical
- BIM expert management and operation
- BIM expert architectural
- BIM expert building and construction

## Back to Bob



Collaboration  
environment

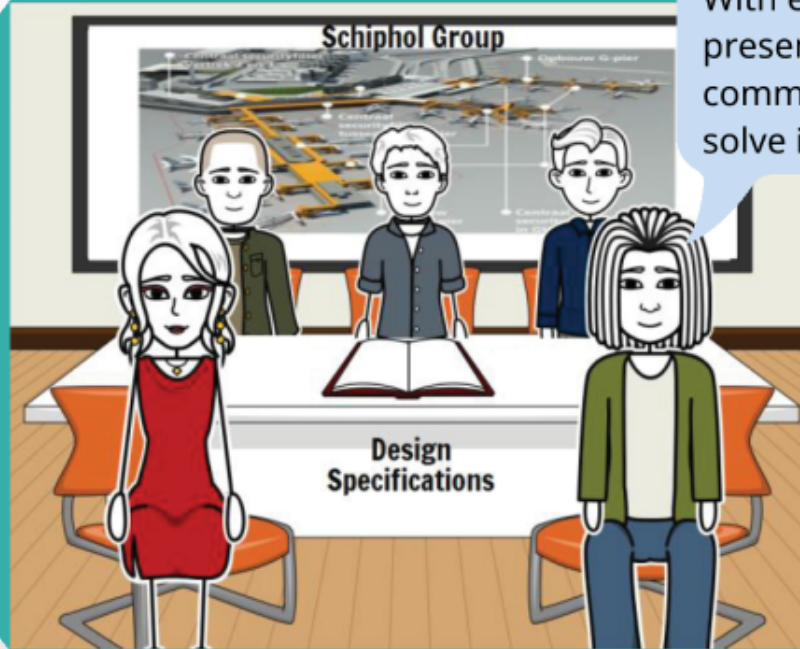
# Back to Bob



Collaboration  
environment



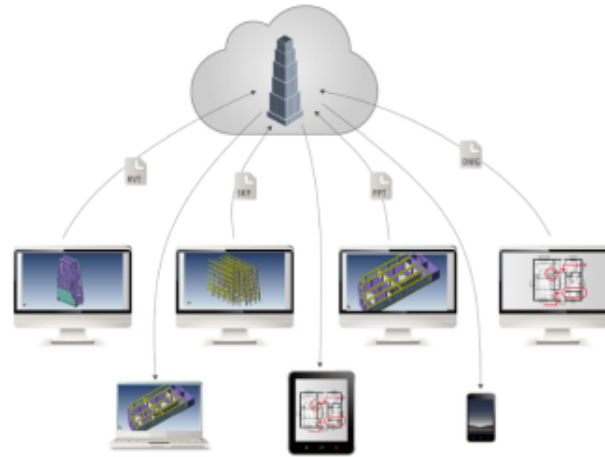
## Back to Bob



With everyone present we can now communicate and solve issues.

Collaboration environment

## Centralized BIM Collaboration



## BIMplementation BIMtergration



P5 Presentation  
Paul J van Berkel

# 10 steps to success as explained by Bob



Step 1

Step 2

Step 3

Step 4

Step 5

Step 6

Step 7

Step 8

Step 9

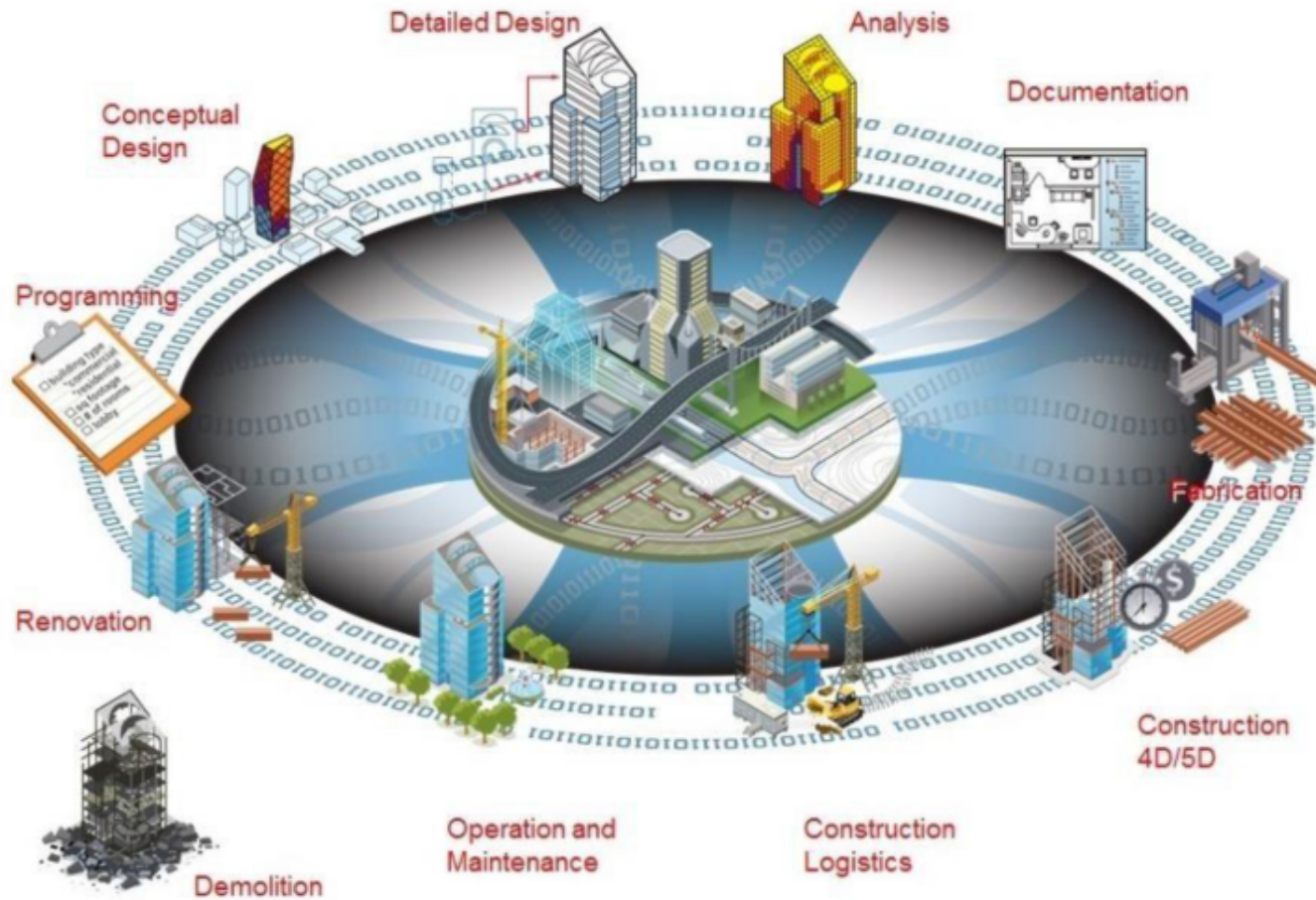
Step 10

# Step 1

Find teams for every step of the BIM circle. For every step of the BIM circle below there should be at least one, or more companies which oversee each step. These companies should have a good amount of knowledge in working in BIM and should also be willing to work in a BIM organization.



# Building Information Modeling Process



# Step 2

Assign a BIM expert from every quadrant of the BIM circle led by a project manager with ample BIM experience. These BIM experts can be part of the companies which are part of the teams of the BIM circle. It is important to have an expert of each quadrant, because this way the conditions of every quadrant and the complete process can be guaranteed.



- Project Manager
- BIM expert architectural
- BIM expert technical
- BIM expert building and construction
- BIM expert management and operation



- Project Manager
- BIM expert architectural
- BIM expert technical
- BIM expert building and construction
- BIM expert management and operation



# Step 3

Write contracts which are in line with the BIM process. All companies in every quadrant should get contracts with the same conditions in them. This step is also the first step where the existing building is mentioned. It is important that the contracts include clauses for modeling the current state of the building. This can be set up in a way that every team models the current situation based on its expertise.

# Step 4






Make sure that every team understands their responsibility as an adviser when the project is at another step. This is very important because this advice makes the overall design stronger. Making sure costly mistakes during the building and construction phase are prevented.


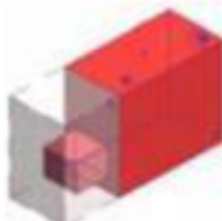



# Step 5

Create a BIM coordination model and database which is updated in real-time and includes communication possibilities. This way all data can be viewed real time, preventing teams working for extended periods of time on objects or parts of the design which then prove to be impossible due to clashes. The including of the communication possibilities make sure that everything is available in one environment. This way no team can fall back on “other” methods of communication which possibly cannot be retraced. The more dimensions are integrated in the BIM environment the better the results will be.

# Step 6

The project manager (collaboration) continuously monitors progress and makes sure deadlines are kept and the quality of the coordination model is up to spec during the BIM process. The quality of the coordination model can be monitored according to the expected level of detail (LOD). This LOD is also part of the contracts and the IDM.

LOD 100 Conceptual	LOD 200 Approximate geometry	LOD 300 Precise geometry	LOD 400 Fabrication	LOD 500 As-built
				
<p>The Model Element may be graphically represented in the Model with a symbol or other generic representation, but does not satisfy the requirements for LOD 200. Information related to the Model Element (i.e. cost per square metre, etc.) can be derived from other Model Elements.</p>	<p>The Model Element is graphically represented in the Model as a generic system, object, or assembly with approximate quantities, size, shape, location, and orientation.</p> <p>Non-graphic information may also be attached to the Model Element.</p>	<p>The Model Element is graphically represented in the Model as a specific system, object, or assembly accurate in terms of quantity, size, shape, location, and orientation.</p> <p>Non-graphic information may also be attached to the Model Element.</p>	<p>The Model Element is graphically represented in the Model as a specific system, object, or assembly that is accurate in terms of quantity, size, shape, location, and orientation with detailing, fabrication, assembly, and installation information.</p> <p>Non-graphic information may also be attached to the Model Element.</p>	<p>The Model Element is a field verified representation accurate in terms of size, shape, location, quantity, and orientation.</p> <p>Non-graphic information may also be attached to the Model Element.</p>

<b>LOD 100</b> Conceptual	<b>LOD 200</b> Approximate geometry	<b>LOD 300</b> Precise geometry	<b>LOD 400</b> Fabrication	<b>LOD 500</b> As-built
				
<p>The Model Element <b>may be</b> graphically represented in the Model with a <b>symbol or other generic representation</b>, but does not satisfy the requirements for LOD 200. Information related to the Model Element (i.e. cost per square metre, etc.) can be derived from other Model Elements.</p>	<p>The Model Element <b>is</b> graphically represented in the Model as a <b>generic</b> system, object, or assembly with <b>approximate</b> quantities, size, shape, location, and orientation.</p> <p>Non-graphic information may also be attached to the Model Element.</p>	<p>The Model Element <b>is</b> graphically represented in the Model as a <b>specific</b> system, object, or assembly <b>accurate</b> in terms of quantity, size, shape, location, and orientation.</p> <p>Non-graphic information may also be attached to the Model Element.</p>	<p>The Model Element <b>is</b> graphically represented in the Model as a <b>specific</b> system, object, or assembly that is <b>accurate</b> in terms of quantity, size, shape, location, and orientation with <b>detailing, fabrication, assembly, and installation information</b>.</p> <p>Non-graphic information may also be attached to the Model Element.</p>	<p>The Model Element <b>is</b> a <b>field verified</b> representation <b>accurate</b> in terms of size, shape, location, quantity, and orientation.</p> <p>Non-graphic information may also be attached to the Model Element.</p>

# Step 7

Build the project according to the coordination model and BIM database making sure all aspects of the model and the database are produced as intended by the documentation

# Step 8

Update the coordination model with as-built information. As-Built data is added to the coordination model to document discrepancies between the execution model and the actual placed object. This way when handing over the model and database to asset management the data is up to date.

# Step 9

Operate and manage the building with the coordination model including the BIM database and as-built information updating the model continuously if any changes are made.



# Step 10

Start a new renovation and/or upgrade project with the coordination model and BIM database intact eliminating the need to first document the current situation as that has continuously been done.

## BIMplementation BIMtergration



P5 Presentation  
Paul J van Berkel

**What should it have  
looked like at Schiphol**



**Story**



SketchUp Group discusses design specifications for upgrade Werner garage



Plus is assigned with making the project upgrade Werner garage and is handed over the project applications



Plus searches for companies willing to execute project in BIM environment



Companies are selected and given their scoring position in the BIM circle



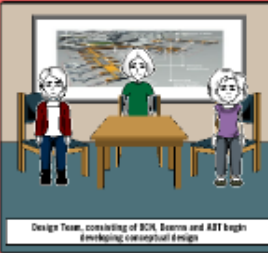
From every good team a BIM expert is elected to join the Project management collaboration



These experts work together, led by the project manager from Plus



A collaboration environment is created in the form of a coordination model and database



Design Team, consisting of BCI, Exarns and AET begin developing conceptual design



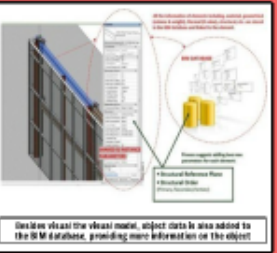
During this process all other teams can communicate through the coordination model which is update real-time, giving advice



Once a week the whole project team comes together to discuss progress and solve any issues which haven't been solved during the week



With the concept design complete the project progress to a definitive design



Decisions about the visual model, subject data is also added to the BIM database, providing more information on the object



Teams which are not leading a certain step of the BIM circle keep continuously monitoring and advising others on the best solutions



With the definitive design completed the project enters the next stage which is supplying and documenting technical data



During this stage BIMM together with BCI, further develop the plans to the construction stage



All other teams give advice by comparing the design to the design specifications and on the make-ability of the design



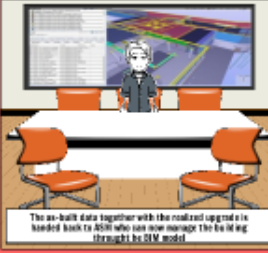
The next step is the construction stage, now the design actually gets built. This stage should include several problems because all teams helped during the design stage



VWIS, GIM, ENGIE and BCI lead the construction phase, executing the plans and documenting the as-built situation



All other teams give advice by comparing the design to as-built model and check if the results are the same



The as-built data together with the realized upgrade is handed back to BCI who can now manage the building through the BIM model



Create your own at Storyboard That

## BIMplementation BIMtergration



P5 Presentation  
Paul J van Berkel

**Question Time?**

**Thank You For Your Time!**

# Drinks in the Bouwpub!



## BIMplementation BIMtergration



P5 Presentation  
Paul J van Berkel